

Crystal Palace

OFFICIAL MATCHDAY MAGAZINE PRICE £1

v

TODAY'S MATCH
SPONSOR

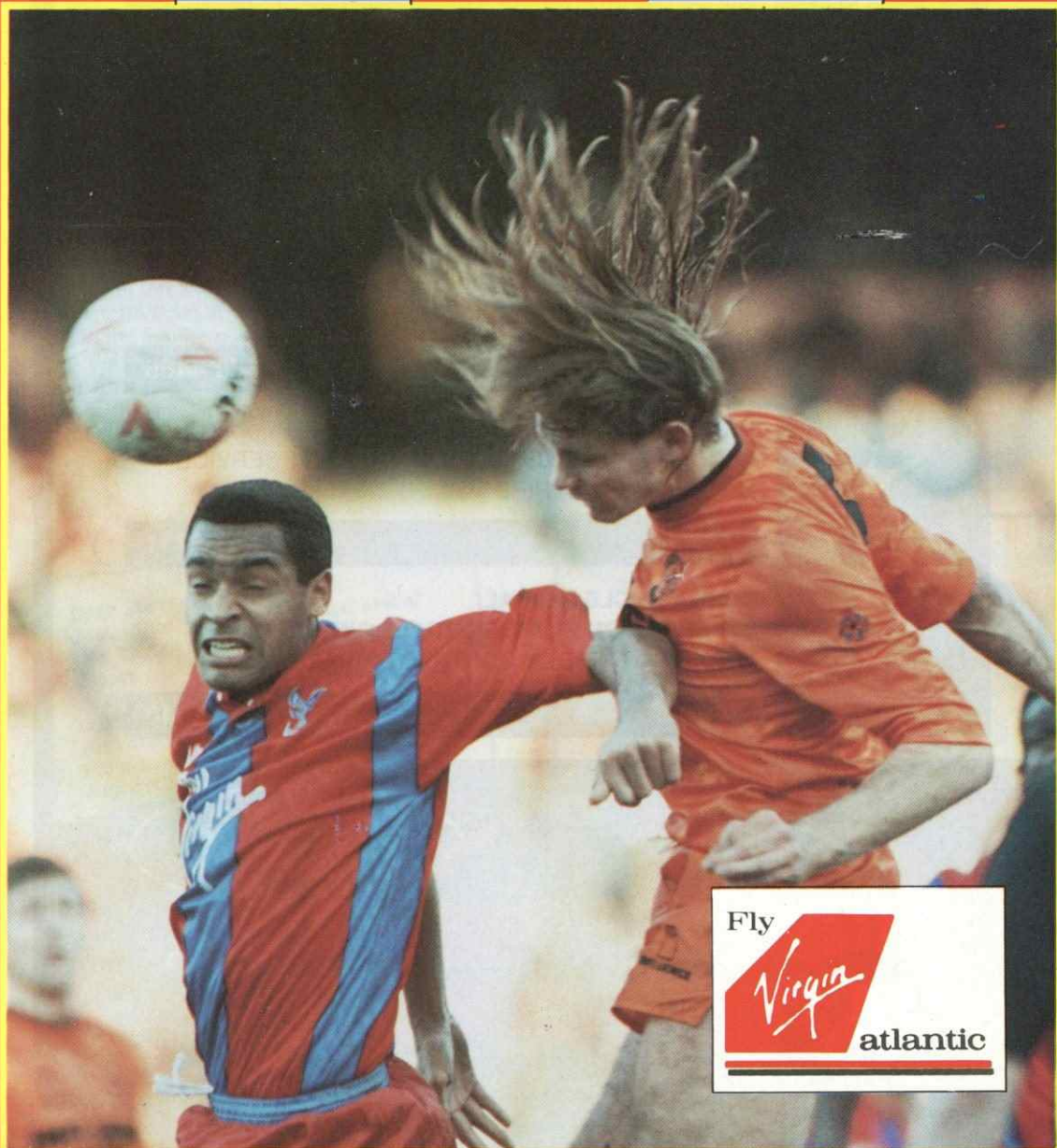
**WESTERN
DEVELOPMENTS
(CROYDON) LTD**

LUTON TOWN

ZENITH DATA SYSTEMS CUP
SOUTHERN AREA SEMI-FINAL
TUESDAY 26th FEBRUARY 1991
KICK-OFF 7.45PM

TODAY'S MATCH
SPONSOR

**FLOWRIGHT
BUILDING
SERVICES**



Fly

Virgin

atlantic

Deer and Crystal Palace - a Great Match!

*You'll find a warm welcome for all
Crystal Palace Supporters from*

DEES OF CROYDON

17 BRIGHTON ROAD, SOUTH CROYDON

■ NEW CAR SALES ■ USED CAR SALES

081 686 8888

39 SHIRLEY ROAD, EAST CROYDON

■ NEW CAR SALES ■ USED CAR SALES

■ PARTS ■ SERVICE ■ MOT

081 654 6051

CARLTON ROAD, SOUTH CROYDON

■ SERVICE ■ PARTS ■ BODY & PAINT SHOP

■ MECHANICAL REPAIRS ■ BREAKDOWNS

■ FREE ESTIMATES ■ MOT

081 680 4466

IMPERIAL WAY, PURLEY WAY, CROYDON

■ COMMERCIAL VEHICLES ■ SALES ■ SERVICE

■ PARTS ■ VAN HIRE

081 681 6711

DEES VEHICLE RENTAL,

113 BRIGHTON ROAD, SOUTH CROYDON

■ CAR/VAN HIRE ■ CONTRACT HIRE/LEASING

081 686 4040



Steve Coppel



Good evening

To get through at Brighton just eight days ago was a credit to the lads and I was well pleased to come away from the Goldstone Ground on this occasion with a victory, as it has not been the happiest of hunting grounds for us in the last few seasons.

It was nice last week to receive a letter from one of our men in the Gulf and we are reproducing it on this page. I would like on behalf of the club to extend our very best wishes to all Palace fans serving in the Gulf and in fact to everybody out there, whether or not they support the Eagles. If you have a friend or relative out there let us know and we will send them a copy of *Palace News*.

We opened up this season away at Luton last August and on that occasion came away with a creditable draw which saw Eric Young score on his Palace League debut. Back here at Selhurst Park in December we managed all three points thanks to Mark Bright but just because we have not yet lost to Luton we must be at our best tonight to secure our place in the Southern Area Final. The incentive of a trip to Wembley being just a couple of games away will be an equally big incentive to "The Hatters".

I hope that everyone enjoys the game tonight and that it is played in the true spirit of Cup football.



Steve Coppel

Dear Stevie & Boys
Just to let you know, there are a few Eagles fans down here in the desert.

We would just like to wish you all the best for the rest of the season. And we hope to be back at Selhurst Park in the very near future, supporting the 'Best of London'.

The only set-back here is the results coming in two weeks late, but I'm sure the lads will provide the results that end, as we will provide the results this end.

Please can you pass on any club news, as newspapers are pretty rare.

All the best

L.Cpl. Vince Brennan & Co.
"The Desert Rats"

HEAR 'THE BOSS'

ON
0898 400 333

CLUBLINE

*Calls charged at 33p per minute cheap rate
and 44p per minute all other times*

COVER NOTE: Mark Bright flashes out the shock treatment to Darren Peacock in our last home game against Q.P.R.



CRYSTAL PALACE FC (1986) LIMITED

Selhurst Park, London SE25 6PU
Tel: 081-653 4462 Fax: 081-771 5311

Club President:
STANLEY STEPHENSON

Chairman:
R. G. NOADES

Directors:
R. E. ANDERSON
B. COLEMAN, O.B.E.
A. S. C. DE SOUZA
G. GERAGHTY
S. HUME-KENDALL
M. E. LEE
G. H. LUCKING
P. H. N. NORMAN
K. A. SINCLAIR
CHIEF B. O. UMUNNA

Manager:
STEVE COPPELL

Assistant Manager:
ALAN SMITH

First Team Coach:
IAN BRANFOOT

Club Physiotherapist:
DAVID W. A. WEST
Grad. Dip. Phys., M.C.S.P., S.R.P.

Club Secretary:
MIKE HURST

PALACE CLUBLINE

☎ 0898 400 333 ☎

*"Phone us each day to hear
exclusive news, views and interviews
direct from Selhurst Park!"*

SIMPLY THE BEST

The only official Crystal Palace F.C. Clubline

Crystal Palace Clubline - P.O. Box 323, London SE25 6PU
Calls charged at 33p per min cheap rate & 44p per min all other times

Designed and Printed in England by
Ward & Woolverton Ltd, London, SE1.

REDS AND BLUES NEWS

WRIGHT AND BRIGHT - ON TARGET!

At last Palace came away from the Goldstone Ground with a victory on Monday last week. The occasion - the Southern Area Quarter Final of the Zenith Data Systems Cup. It was on 12th January 1963 when Palace last won at the Goldstone Ground and on that occasion in front of 12,333 fans Burridge and Holton were the scorers in a 2-1 victory.

DEADLY DUO

Last week it was inevitably Mark Bright and Ian Wright who produced the goals that sent the Seagulls crashing out of their second cup competition in a fortnight. Mark gave us the lead in the seventh minute of extra time and then with 99 minutes of the tie completed it was Ian Wright who popped up to score his 100th goal for the club.

YOUNG BLOOD

Andy Thorn failed to pass a fitness test for the game and Geoff Thomas did a fine job in the middle of the defence with big Eric Young. Palace youngster Simon Osborn came on for the last fifteen minutes of the game in place of John Salako and gave a good account of himself on an evening when Palace had looked the better side.



TONIGHT'S MATCH

If the score of tonight's match is level after 90 minutes, extra time, consisting of two 15 minute periods will be played. However, if the score is still even the match will be decided by penalties.



THE FULL MEMBERS CUP PALACE'S COMPLETE RECORD

Season	Round	Opponents	Venue	Result	Palace scorers
1985-86	1(i)	Brighton & Hove Albion	(H)	1-3	Aylott
	1(ii)	West Bromwich Albion	(a)	1-2	Cannon
1986-87	1	Portsmouth	(a)	0-4	
1987-88	1	Oxford United	(a)	0-1	
1988-89	1	Walsall	(H)	4-2	Barber, Dyer 2, Wright
	2	Southampton	(a)	2-1	Wright, Dyer
	3	Luton Town	(H)	4-1	Bright 3, Wright
	4	Middlesbrough	(a)	3-2	Pardew, Barber, Wright
	SF	Nottingham Forest	(a)	1-3	Wright
1989-90	2	Luton Town	(H)	4-1	Wright, Pardew, Bright 2
	3	Charlton Athletic	(H)	2-0	Gray, Wright
	4	Swindon Town	(H)	1-0	Gray
	Area Final	Chelsea	(H)	0-2	
	Area Final	Chelsea	(a)	0-2	
1990-91	2	Bristol Rovers	(H)	2-1	Gray, Salako
	3	Brighton & Hove Albion	(a)	2-0	Wright, Bright
	4	Luton Town			



Alan Pardew - scorer against Luton in 1989/90.

LONG RANGE FORECAST!

Over the period of one month the Palace met Nottingham Forest in no fewer than four separate FA Cup and Football League matches, three of them at the City Ground in the space of two weeks!

When all the excitement and interest of those encounters has died down, probably the one incident above all others that will forever remain etched in the memories of our fans is the long-range equaliser in the first Cup replay secured in the last minute by John Salako.

LONGEST OF ALL?

In fact, that remarkable goal could well be our longest of all time in terms of the sheer distance it travelled, for John was clearly no more than ten or twelve yards inside the Forest half when he struck the ball, sending it high over friend and foe alike and, with impressive accuracy, into Forest's net from what was surely at least 45 yards.

Do Eagles fans have any recollections of previous Palace goals scored from such a distance? Please - if you do, or if you are interested in this one, write to Palace's tame historian and collector of such oddities, Rev Nigel Sands at Wickham Rectory, Newbury, Berkshire RG16 8HD (please enclose SAE if you'd like a reply).

THAT'S ENTERTAINMENT!

68 High Street
Croydon
Surrey

081-686 8422

Videos, Compact Discs,
Cassettes and Records

Monday 11th March
7.30pm

PALACE RESERVES

v

ARSENAL

(Football Combination)
Sandy Lane, Mitcham

CRYSTAL PALACE F.C. VICE PRESIDENTS 1990/91

Chairman: Paul Baker

Bernard ADAMS, Cecil ALLEN,
Andy ASH, John AVERY,
Margaret BAKER,
Bob BEVAN, Brian BROWNETT,
Anne BROWNETT,
Nikki BROWNETT, Ernie CAST,
Tony CHAPMAN, Jo CHAPMAN,
Peter COUGHLAN, Joy CRAGO,
Colin CREED, Stanley CREED,
Richard DAVIS, Madge DAVIS,
Chris DEUTERS, Paul ELLIOTT,
Chris ELSTON, Dermot FLAHIVE,
Ian FRAZER, David FREE,
John JAMES, David JENSEN,
David LEE, Robert LLOYD,
Len LOCKWOOD,
Anne MACDONALD,
Steve MACDONALD,
Alan MAIDENS, Pegi MAIDENS,
Jack MILEHAM,
Frank MILANO, Gary MOORE,
Peter MORLEY, Alex MORLEY,
Paula MORLEY,
Steve MOSS, Liz MOSS,
Robert NEWWEY, Sean O'REILLY,
Raymond PARKER,
Peter PESCHIER,
Philip PINNEGAR,
Kevin PRENDERGAST,
Gerry SAUNDERS, Tony SIZEN,
John SMITH, Jeff STRAW,
Olive STRAW,
Adrian SUCKLING,
Antonia TAVERNER,
Jim TAYLOR, Denis TRENDLE,
Mike VICKERS, Sam WALTON

uno plus
WINE BAR RESTAURANT

Tapas
Burgers
Pizza
Pasta
Bar

1538 London Road
Norbury,
London SW16 4EU
Tel: 081-764 3007

Answerphone:
081-764 6022

Less loot on Virgin Atlantic.

Some of the lowest fares and the
highest quality service.



NEW YORK JFK and NEWARK • MIAMI • LOS ANGELES • MOSCOW • TOKYO • BOSTON
For details and reservations phone 0293 562000 or see your travel agent.

LIFELINE

DON'T FORGET!

Lifeline members get:
10% discount at ALLDERS
8% discount at SAINSBURYS
8% discount at HOMEBASE
8% discount at SAVACENTRE

All discount vouchers must be purchased from the LIFELINE office before you shop. Phone 081-771 7227 to order your vouchers.

GET ON OUR WAITING LIST

I wish to be put on the LIFELINE waiting list.

Name.....

Palace Club No.

Address

.....Post Code.....

Tel. No.

(Phone MALCOLM PORTER on 081-771 7227 or send this form to him at SELHURST PARK, SE25 6PU).

COMET

LIFELINE MEMBERS can now obtain a massive 10% saving on all goods purchased from COMET.

The increase in discount is effective from 1st February 1991.

Remember—Comet stocks everything you need for home entertainment.

TO OBTAIN YOUR VOUCHERS PLEASE PHONE LIFELINE ON 081-771 7227. NO DISCOUNT CAN BE OBTAINED DIRECT FROM COMET.

Pre-match? • Fish & Chips?

**GEORGE'S PALACE
RESTAURANT**

FOR QUALITY & SERVICE

40-42 High Street Thornton Heath, Surrey.
Telephone: 081-684 3298

Golf day for Lifeline Members at WALTON HEATH GOLF CLUB

In conjunction with 'Palace Travel'

Monday 8th April 1991

8.00am Coffee & Biscuits on arrival
9.00am Tee Off (New course)
12.30pm Lunch (Four course)
2.00pm Tee Off (Old course)
5.00pm Afternoon Tea – presentation of trophy and prizes

Prize Categories at this event will be as follows:

OVERALL WINNER

LONGEST DRIVE

NEAREST THE FLAG (Par 3)

WORST SHOT

Price for the day all inclusive is £92 per person. European Golf Patrons will also give every participant on this day a free complimentary golf pack which includes golf balls, tees etc.

NO GOLF CRISIS AT TOBY MARSDEN'S GOLF STUDIO —

RING 081-684 1134 or

081-670 5974

**TO BOOK YOUR LESSON, AND
ENJOY A 20% DISCOUNT!**



LIFELINE WINNERS

WEEK 137: Commencing 24/12/90. Weekly Prizes: £1000 or Virgin Holiday: No. 741 T Morris, Mitcham. £1000 holiday for 2: No. 3582 S Kelleher, Upper Norwood. £200: No. 4195 J Payne, Huntingdon. Air Europe Tickets No. 788 Peter Hudson, Croydon. £25 Palace Travel Voucher: No. 600 J S Porter, Walton on Thames. £100 Winners: 4483 S Ribbens, 665 S Foster, 3946 M Skinner, 281 C Duncan. £50 Winners: 3573 P Rhoades, 1168 J Butler, 3027 P Moody, 344 P Pechier. Consolation Prizes: 1266, 1959, 4105, 943, 3380, 2784, 1264, 514, 4117, 2858, 4267, 2231, 4383, 1722, 1588, 1472, 157, 14, 4794, 3721, 4830, 53, 2071, 692, 99, 161, 3580, 4279, 2178, 1019, 1901, 2965, 3733, 4354, 106. WEEK 138: Commencing 31/12/90. Weekly Prizes: £1000 or Virgin Holiday: No. 3614 J Mee Walworth £1000 holiday for 2: No. 1071 J Brown, Sanderstead. £200: No. 4409 P Sabastain, Westerham. Air Europe Tickets No. 267 P Ayles, Beckenham. £25 Palace Travel Voucher: No. 4313 J Grant, Horley. £100 Winners: 1710 K Townsend, 843 J Titterell, 4233 Mrs Blackburn, 1697 L Jackson. £50 Winners: 3684 M Pudney, 277 G Harris, 3200 R Chartres, 1028 F Stark. Consolation Prizes: 4625, 4146, 2873, 2585, 3561, 4993, 809, 1089, 410, 3086, 406, 1901, 3945, 885, 2825, 4262, 2403, 3856, 1176, 4568, 2768, 2254, 2147, 4662, 618, 1768, 2418, 2708, 4231, 2901, 3866, 1414, 132, 4510, 2525. WEEK 139: Commencing 7/1/91. Weekly Prizes: £1000 or Virgin Holiday: No. 1445 S Wilson, Croydon. £1000 holiday for 2: No. 3249 J Claydon, Biggin Hill. £200: No. 1986 S Williams, Epsom. Air Europe Tickets No. 2775 P French, Croydon. £25 Palace Travel Voucher: No. 3979 N Hewitt, Thornton Heath. £100 Winners: 287 J Colgin, 4961 M Brookes, 1841 M Andrew, 3032 S Holiday. £50 Winners: 3601 P Fagence, 1663 P Field, 2040 G Coombes, 171 M Jeffrey. Consolation Prizes: 640, 3791, 6, 770, 3007, 1036, 164, 1070, 67, 281, 1258, 3503, 92, 1668, 134, 2070, 749, 1957, 331, 283, 1038, 1364, 836, 4006, 3882, 888, 1155, 1430, 21, 806, 1065, 971, 597, 1241.

ZENITH DATA SYSTEMS.

THE COMPUTER MANUFACTURER THAT SERVES UP BANANAS, NUTMEGS AND A FEW CHIPS.

Have an enjoyable evening's football.
Whichever team you support.

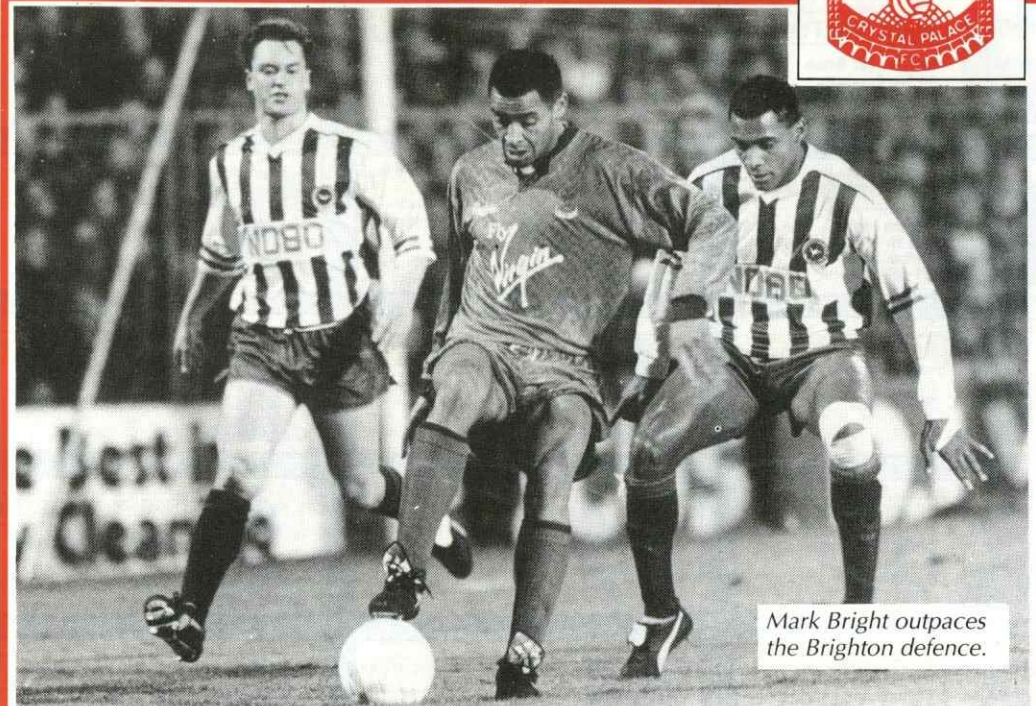
Zenith Data Systems Ltd, 452 Bath Road, Slough, Berks SL1 6BB
For more information about our PC's call 0800 800 485

ZENITH
data systems 

Groupe Bull

BRIGHTON BREEZY

Action from last week's Zenith at the Goldstone Ground.



Mark Bright outpaces
the Brighton defence.



Goalscorer Ian Wright
claims the ball in this
close encounter.

Eagles Sponsored



NIGEL MARTYN

Bob 'The Cat' Bevan
All Star Speakers
081-650 4926



RICHARD SHAW

Crystal Cars, Croydon
081-684 1115
Crystal Haulage
081-769 7797



ANDY GRAY

James D Sumner
Carnegie Espana S.A



GARY O'REILLY

Pete the Eagle
Data Write-Playing Strip/
Football Boots
081-857 5428



ANDY THORN

Kays Roofing 081-681 5808



PHIL BARBER

Boots-'The Belbins'
Stratford upon Avon



GEOFF THOMAS

Orbic Bearings
081-684 8262



MARK BRIGHT

Chief Ben Osiesie Umunna



IAN WRIGHT

Away Supporters
Coach No1



JOHN SALAKO

Crystal Cars, Croydon
081-684 1115
Crystal Haulage
081-769 7797



STEVE COPPELL

Gerry Dale,
Club Shop,



GARRY THOMPSON

Pauline & Keith Tickner



ALAN PARDEW

Kitbag-Adela-Virgin Upper
Class, B&H Management,
'New York Eagles',
Paul 0101-212-355 5825



JOHN HUMPHREY

Allmat Limited
081-680 0666



JEFF HOPKINS

KRS Transport
54 Cromwell Road,
Croydon, Surrey
081-683 2474
0831 430247



EDDIE MCGOLDRICK

Forgmore (Investments Ltd)
Sue & Barry



GLYN HODGES

Boots-Pete the Eagle-Datawrite
Tracknail-Car Park Crew
Training Strip-Lisa-Virgin Upper Class
Kitbag-C.P.F.C. Marketing-Alan
Playing Kit-Paul Ainsworth-Hong Kong



SIMON OSBORN

Sampson Scaffolding
Services 081-688 2714



MARK DENNIS

Family Section



ANDY WOODMAN

TPH Contracts
184a Gloucester Rd,
Croydon, Surrey
081-684 2268



ERIC YOUNG

Karen & Anthony Allnut
and Simon Bell



SIMON RODGER

'Phone-A-Sec' Inc.



PERRY SUCKLING

Playing Strip:
An Admirer



DAVID WHYTE

David Jensen
John Redstall



SIMON LINE

Vincent James
Developments Ltd
Tel: (0483) 224316



STAN COLLYMORE

Marshall Surfacing
0883 622241
Dacon Heating & Plumbing
081-684 4805



GARETH SOUTHGATE

Pete The Eagle
DATA-WRITE

TRAINING KIT £50 • FOOTBALL BOOTS £50 • TRACKSUIT £50 • PLAYING STRIP £50 • KITBAG £25 •

Past encounters and their programmes

By Ian King

Recent Cup Encounters between The Eagles and The Hatters

Tonight is the third occasion Palace and Luton meet in the Zenith Data Systems Cup, or its predecessor the Simod Cup, all of which have taken place at Selhurst Park with Palace looking for a trio of victories.

On Tuesday, 10th January 1989 it was a Third Round Simod Cup tie, Palace having disposed of Walsall and Southampton, that drew nearly 6,000 spectators to Selhurst Park. Palace were just above mid-way in the Second Division and Luton in Division One, but both had been losers in FA Cup ties the previous Saturday.

MARK'S HAT-TRICK

Luton's opening classy touches earned them the lead in the eighteenth minute through recent signing Iain Dowie but soon afterwards the game took a complete turnabout as **Mark Bright** scored a hat-trick in seventeen minutes for the Eagles. First a cross from Phil Barber was headed in at the far post to level the scores in the twenty fourth minute and five minutes later a Barber effort was blocked in the goalmouth and followed up by **Mark Bright**. Twelve further minutes on another cross, this time by John Pemberton was headed home strongly again by **Mark Bright** to give Palace a two goal interval break. Three minutes from the restart goalscoring partner **Ian Wright** did not wish to be left out as he added his name to the scoresheet.

DEBUT OF EDDIE MCGOLDRICK

Palace could have added further goals from Wright and Pemberton, and a free-kick from Pemberton, given for a trip on Wright when in a dangerous position, was turned brilliantly away by Chamberlain in the Luton goal. Steve Coppell sent on new signing Eddie McGoldrick, from Northampton, for the last thirty minutes in place of John Salako, and he showed some useful touches as the game drew to its conclusion and Palace thinking of only two games to Wembley.

Palace: Suckling, Pemberton, Burke, Pennyfather, Hopkins, Nebbeling, Salako, Pardew, Bright, Wright, Barber. Subs: McGoldrick for Salako, and Shaw not used.

Luton: Chamberlain, Breaker, Dreyer, Hill, James, Johnson, Williams, Dowie, Harford, Oldfield, Preece. Subs: Wegerle for Williams, and Harvey not used.

Ten months later on Monday 27th November 1989 a Second Round match in the now Zenith Data Systems

Cup brought the sides together again, only a couple of weeks after a Division One match at Selhurst Park had ended one apiece. Referee Kelvin Morton was in charge of the game—one of his recent visits had produced five penalties—and the 4,000 crowd wondered if anything noteworthy would occur again.

DON'T SAY A WORD!

As in the previous encounter, Luton took a first-half lead through Iain Dowie who headed home, as the Palace defence stood and watched, but the game turned on its head towards the end of the first half with another hat-trick—of dismissals! Two Luton players, Preece and Wilson together with assistant manager Terry Mancini were sent from the field and bench in three minutes for verbal misdemeanours and in the second half Palace took advantage of their numerical superiority and Luton's weakened midfield to have some shooting practice with **Ian Wright** starting it in the fiftyfourth minute and **Alan Pardew** five minutes later with **Mark Bright** adding a brace twenty minutes from time and again in the eighty fourth minute.

Palace: Martyn, Pemberton, Dennis, Gray, Hopkins, Barber, McGoldrick, Thomas, Bright, Wright, Pardew. Subs: O'Reilly for Gray and Salako for Wright.

Luton: Chamberlain, Breaker, Harvey, Wilson, Allpress, Dreyer, Preece, Wegerle, Dowie, James, Tighe. Subs: Cooke and Gray for Allpress and Tighe.



DIRECTORS CLUB

* AIR EUROPE

* ALLMAT LIMITED

* AUTOPLAN LTD * COLOURSPHERE LTD

* DEES OF CROYDON * GALLIFORD SEARS

* S GORING * E MITCHELL & CO * MR A P MULLOCK

* OGDEN ALLIED * SECURIGUARD * SOUTH NORWOOD GLAZING

* TRISTAR LTD * VIRGIN ATLANTIC





ALPINA BY MICHAEL TYLER

For complete luxury with modern styling here is the sumptuously soft Alpina collection. Designed with comfort very much in mind. Alpina is made from only the very best materials and is available in a superb selection of contemporary covers and colours.

Upholstered in modern velour fabric.
Choice of colours.

LARGE SOFA
£879

CHAIR
£479

SMALL SOFA
£699

FOOTSTOOL
£169



**YOU CAN'T
BUY IT
FOR LESS!**

If any customer buying an article from any of our stores can prove within 7 days of purchase that it, or its equivalent, can be bought from a local retailer at a lower price including delivery & offers we will willingly refund the difference.

ALDERS

OF CROYDON ♦ TEL: 081-681 2577
ALL TOGETHER A BETTER CHOICE

Principal Carpet
Contractor to



*For Carpets and Flooring
you won't find us boring.
Home and Away
throughout the U.K.
Seabrook Graham . . .
. . . know how to lay 'em*



SEABROOK GRAHAM CARPETS

40 Station Approach
Hayes
Bromley

081 462 8224
Fax 081 462 8440

44 Chapel View
Ballards Way
South Croydon



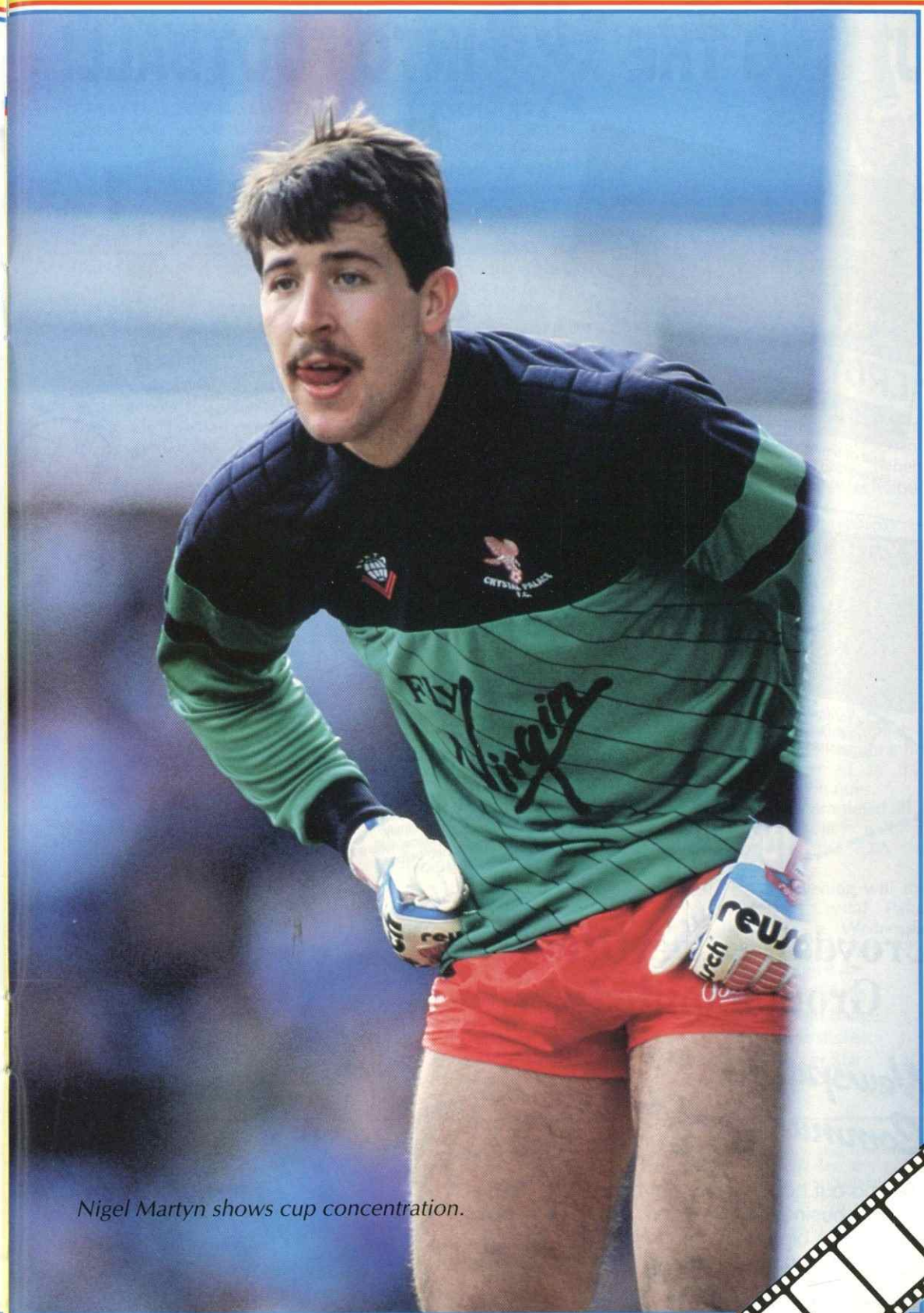
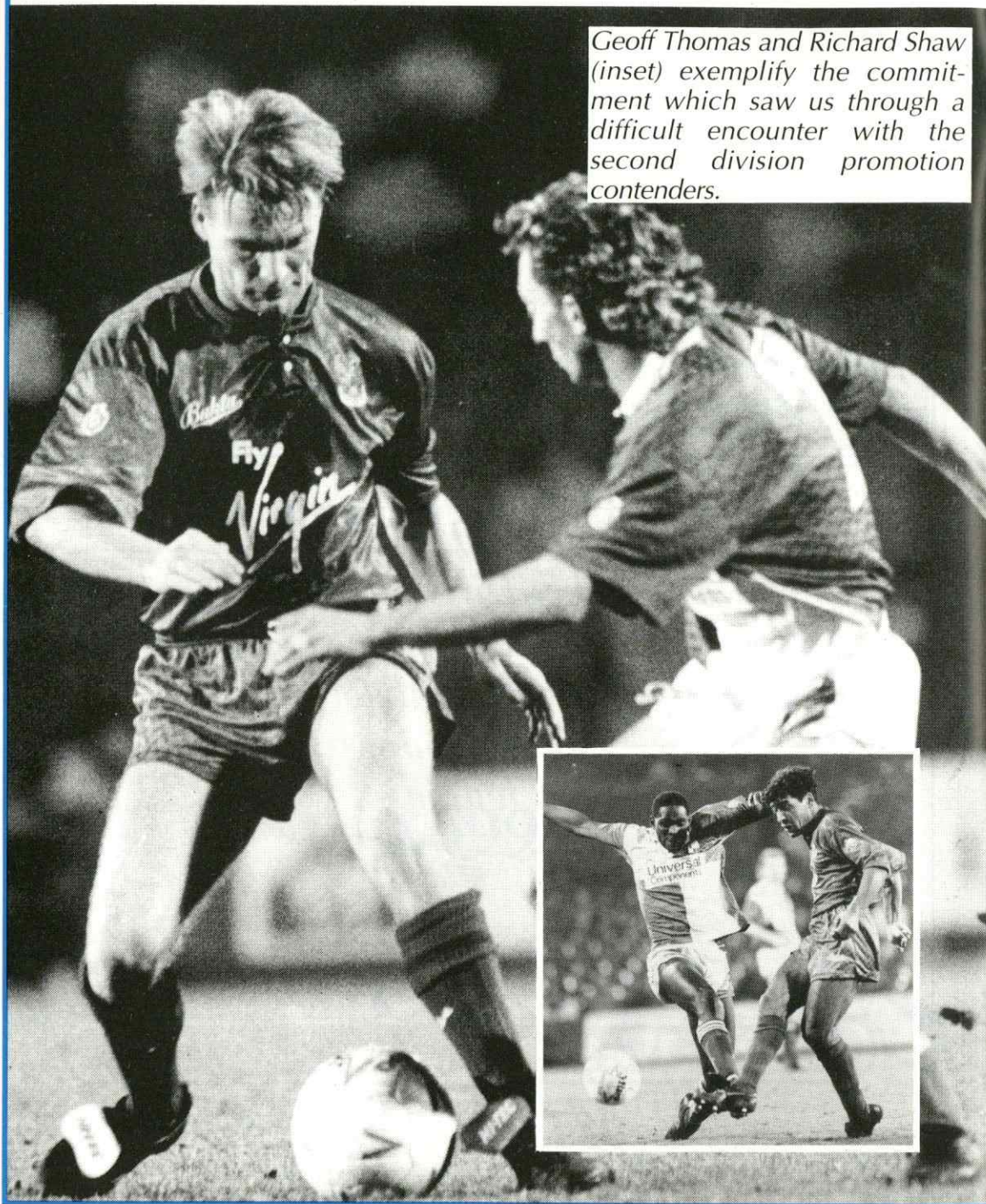
081 643-7006

37a The Broadway, Cheam, Sy. SM3 8BL.

Palace in Action

Tonight we look back to our 2-1 win in the Zenith Data Systems 2nd round tie at home to Bristol Rovers. (Colour pic opposite courtesy of Action Plus).

Geoff Thomas and Richard Shaw (inset) exemplify the commitment which saw us through a difficult encounter with the second division promotion contenders.



Nigel Martyn shows cup concentration.

PUTTING THE FUN INTO FOOTBALL!



Full of smiles: the Croydon Advertiser newspaper, supporting football in the community, has made a big hit with the Family Enclosure at Selhurst Park.



Score forecast? The eye-catching electronic scoreboard, sponsored by the Croydon Advertiser, was unveiled in September.



Croydon Advertiser Group Limited

Newspapers with the Community at Heart

To find out how we can put heart into your business in Croydon, South London's biggest commercial area, telephone 081-668 4111

Croydon Advertiser Group Limited
Advertiser House, Brighton Road, South Croydon CR2 6UB



Centre spot: the Croydon Advertiser mascot, the Blue Bear, joins the pre-match line-up, marking the link between the town's top paper and top club.



Big attraction: the Blue Bear joins just some of the young fans in the special Croydon Advertiser Family Room at Crystal Palace, where they are entertained before and after big matches.



Palace and the Community



GREAT DAY FOR NORWICH!

Before our professionals were beaten by Norwich City on the day of our last home game our visiting juniors had also come out on top to make it a fine day for the Canaries here in South London.

Playing against Palace in Community matches at the National Sports Centre, Norwich ran out winners 6 goals to 4 at Under-14 level. Eagles goals came from John Morris (2), Ronell Coward and Tim Leany.

At Under-12 level six games of five-a-side football were played in a tournament. Results were three wins for Norwich, three matches drawn. The highlight for Palace was a great goal by Ben Hooper in the last game.

It really wasn't a day for Eagles, although as coach Peter Lacey reports, our boys did very well considering the average age of the Norwich teams was much higher. Perhaps the best part was that the Norwich party were as one in saying that we were one of the most sporting and friendly clubs they had ever visited, which is what it's all about really isn't it!



THANKS TO LESLIE

Dear Leslie
I felt I had to write on behalf of my family to express our thanks for all your efforts towards making the Family Enclosure Party so enjoyable. Like many other families with young children our finances are considerably stretched, especially at

SOCCER SCHOOLS

Following the success of the Christmas 1990 Soccer Schools, Crystal Palace Football Club, in conjunction with the Sports Council, Bromley Council, Croydon Council and the Football Association are pleased to announce the February half-term 1991 Soccer Schools. These courses will include:

- Coaching from fully qualified Football Association coaches within a friendly and safe environment.
- Two free £10 seat tickets for a child and an adult for First Division fixture against Derby County at Selhurst Park on Saturday, 16th March 1991. Tickets will only be available to children who complete the whole three days and will be awarded in the form of a letter which can be exchanged, if accompanied by their certificate, for the tickets at the Box Office during the week 11th-15th March 1991.

- A certificate of attendance from Crystal Palace Football Club Football in the Community Scheme for any child attending all three days. Ring Jeff Hawkins 081-653 4462 for details.

GIRLS ONLY SOCCER SCHOOL

The Football in the Community Scheme will run its first-ever Girls Only Half-Term Soccer School at Ravensbourne School, Hayes Lane, Bromley on the 20th, 21st and 22nd February 1991.

The course will run from 10am-3pm each day and will

incorporate the Football Association Soccer Star Scheme. The FA Soccer Star Scheme consists of six skills/techniques, ie.

- ★ Running with the ball.
- ★ Speed and agility.
- ★ Turning.
- ★ Heading.
- ★ Shooting.
- ★ Dribbling.

Each girl will be coached and tested in each of these disciplines. They will then be awarded a mark dependent on their age and skill illustrating how they have performed in these critical soccer techniques. Once they have completed all six tests their results will be forwarded to the FA for processing.

A Presentation Evening will then take place at Crystal Palace Football Club on Wednesday, 17th April 1991 at 7pm when each girl will receive a:

- ★ Soccer Star Certificate.
- ★ Soccer Star Cloth Badge.
- ★ Soccer Star Bag sticker.
- ★ Individual Soccer Star Progress Report.

this time of year, so we really appreciated the incredibly low cost. We don't know how you did it, but thanks.
We also thought it was great that so many of the players made the effort to come along. Their friendliness and general conduct were a credit to the club.

Thursday 17 January also happened to be my wife's birthday, and I am sure that it will be one birthday that she will always remember.
Please pass on our thanks to everyone who worked so hard to make it such a wonderful night.
Yours sincerely
John, Maureen, Melanie and Christopher Dixon.

Important notice to all Palace supporters from STEVE COPPELL



Dear Supporter,
Many of you have already used Palace Clubline on 0898 400 333.
It is the ONLY service run by the club, and this is the ONLY service that has profit going directly to Crystal Palace for the improvement of supporters facilities and team building.
Everyone at Crystal Palace enjoyed some fine times in 1990. With your help 1991, we are sure, will be even better!!

0898 400 333

All the latest action 'LIVE' on CLUBLINE!!

Full match commentaries of first team matches



1988/89



**CRYSTAL PALACE 3
BLACKBURN R 0**

CRYSTAL PALACE ARE
PROMOTED TO DIVISION 1

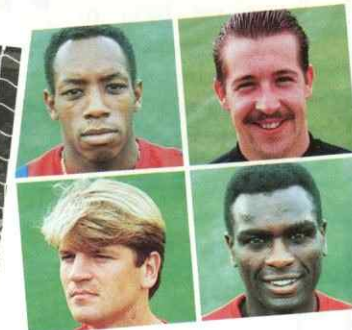
1989/90



**CRYSTAL PALACE 4
LIVERPOOL 3**

F.A CUP SEMI-FINAL

1990/91



**FOUR PALACE MEN
PICKED FOR
NATIONAL SQUADS**

IAN WRIGHT & NIGEL MARTYN (ENGLAND)
GLYN HODGES & ERIC YOUNG (WALES)

ALL UNFORGETTABLE PALACE MOMENTS !!

0898 400 333

JUST AS UNFORGETTABLE !!

THE NEW CRYSTAL PALACE CLUBLINE

Clubline is the only official Crystal Palace Telephone Information Service.
Keep in touch with the Eagles 24 hours a day, 365 days a year.
Palace Clubline is always first with all team news, interviews, Club views, 'live' match commentaries, reserve and youth team news, competitions, all the latest ticket information plus lots lots more

ALL PALACE NEWS IS RELEASED ON THE
OFFICIAL CRYSTAL PALACE FC CLUBLINE FIRST !

Don't die of ignorance - keep in touch with your club!

CRYSTAL PALACE CLUBLINE 0898 400 333

Available from November 18th 1990

WESTERN

**Western Developments
(Croydon) Ltd.**

Western House,
26 Selhurst Road,
London SE25 5QF
Telephone: 081-684 8884
Fax No: 081-689 7176

Plowright

BUILDING SERVICES

K R PLOWRIGHT & CO LTD

Heston Court,
Camp Road,
Wimbledon Common, SW19 4UW

Telephone: 081-946 6532

Fax: 081-879 0827

Mobile: 0860 514230

Mascot Fact File

We have two lucky mascots for this evening's exciting Zenith Data Systems Cup game between the Eagles and the Blues.



Anthony Smith, aged eight, lives in Bexleyheath, Kent. He attends St Thomas More Primary School, and his sports are football

and swimming. Anthony's favourite Palace stars are John Salako and Nigel Martyn. The team he plays for is King Fisher JFC.



Graham Smith (no relation to Anthony!) is 10-years-old, and lives in Loughton, Essex. His school is White Bridge Junior School, and his

one hobby is Football! Graham's ambition is to play in goal for CPFC, and his favourite Eagles are Ian Wright, Mark Bright and Nigel Martyn. He has supported Palace since he was seven-years-old.



MITCHELL & CO
62 Pelhams Walk, Esher,
Surrey KT10 8QD

CONVEYANCING BY SOLICITORS

- ★ Buying or selling property? ★
- ★ Remortgaging your house? ★
- ★ Taking or renewing a lease? ★

Telephone us on
Esher (0372) 65841
or 68900

for a competitive and
comprehensive written quotation

NEW DEAL VIDEO RENTALS

TATUNG
BRAND NEW 51cm
COLOUR FST
INFRA RED
REMOTE CONTROL
MONITOR
STYLING
2 WAY
SPEAKERS
MATCHING TV &
VIDEO STAND



SANYO
BRAND NEW VHS
RECORDER
ARM CHAIR
PROGRAMMING
AUTO TRACKING
2 SPEED SEARCH
8 EVENT/1 YEAR
QUICK RESPONSE

BRAND NEW REMOTE CONTROL
TELEVISION & VIDEO

FOR JUST

£15.98

RENTAL PER MONTH*

* RENTAL BY DIRECT DEBIT
OR GIRO. SUBJECT TO
STATUS. MINIMUM PERIOD
OF HIRE ONE YEAR.

AVAILABLE
SEPARATELY
TELETEXT AVAILABLE
(EXTRA £2 PER MONTH)
WRITTEN DETAILS ON
REQUEST

FULL SERVICE BACK UP BY OUR OWN ENGINEERING DIVISION

**FORBES
RENTALS**

081 660 6300
7-11 Whytecliffe Road, Purley,
Surrey, CR8 2AY.
081 657 2444
15 Limpsfield Road, Sanderstead,
Surrey, CR2 9LA.

Meet our visitors

LUTON TOWN



Back Row: — Richard Cooke, Paul Gray, Marvin Johnson, Kurt Nogan, Richard Harvey, Jason Rees.

Middle Row: — George Ley (coach), John Moore (coach), Julian James, Ceri Hughes, Iain Dowie, Andy Petterson, Alec Chamberlain, Graham Rodger, Darron McDonough, John Faulkner (Asst Manager), Dave Galley (physio).

Front Row: — David Beaumont, Tim Breacker, John Dreyer (Capt), Jim Ryan (Manager), David Preece, Kingsley Black, Lars Elstrup.

UPPER ECHELONS

They're feeling a little bit smug over at Kenilworth Road, these days! And every one who follows football and likes to see the underdog flourish is feeling very pleased for them!

Luton supporters although being well pleased with their club's progress in the Zenith must be somewhat concerned by their team League position. After all, relegation was only staved off last May by a very slender margin and no less than three experienced players moved away from Kenilworth Road in the close-season, to be followed by another in October.

Danny Wilson, vastly accomplished in midfield

left for Sheffield Wednesday at a £200,000 fee, Mick Kennedy, tenacious and aggressive, went to Stoke City for £180,000 and of course goalkeeper Les Sealey completed his on-loan transfer to Manchester United. The current season was then little more than six weeks old when full back Tim Breacker joined West Ham and this impressive attacking defender was lost to Luton Town.

MADE LIGHT

However, The Hatters made light of these departures! Exposed to the testing rigours of the 1st division all sections of the team played supremely well and made a mockery last season's

THE DECADE AT A GLANCE

Season	1980-81	1981-82	1982-83	1983-84	1984-85	1985-86	1986-87	1987-88	1988-89	1989-90
Division	2	2	1	1	1	1	1	1	1	1
Position	5	1	18	16	13	9	7	9	16	17
Average Home attendance	10,291	11,880	13,452	11,938	10,816	11,062	10,256	8,038	9,504	9,886

embarrassments. Goalkeeper **Alec Chamberlain** has been superb—he's really looked a top flight custodian and has gained approval not just from his own fans at Kenilworth Road but also on opponents' grounds with his marvellous displays. Perhaps his best performance of all was at Sunderland's Roker Park when his colleagues did appear in danger of being over-run and he defied the home side with a string of fabulous saves that had even the most hard-bitten observers purring with appreciation.

Another reason for Luton's impressive opening half to the season has been the continuing excellent goal-scoring form of Danish international striker Lars Elstrup. For example, when Everton were Luton's visitors a couple of months ago Lars' close-range goal midway through the first half (his seventh of the season) ought to have provided the impetus for The Hatters to secure another fine result but The Toffees were able to equalise soon after the break. Elstrup is one of those centre-forwards who plies his trade in rather more humble surroundings than some and is therefore not accorded the publicity by the media that his skill and achievements deserve, but informed football fans often have a span of knowledge that is considerably wider than that of many TV and radio pundits and Elstrup's talents are fully recognised and appreciated here at Selhurst Park.

DEFEAT AT DERBY

Luton played well enough at Derby to have gained some reward, yet went down by the odd goal in three prompting Manager **Jim Ryan** to express the view that he didn't just want a pretty football team, but a winning team too.

There was however no doubting Luton's commitment when they hosted the fixture with Manchester City. Trailing by two goals to Peter Reid's side they fought back bravely with a late rally to equalise with two strikes in the last quarter of an hour. Polished centre-forward **Ian Dowie** scored the first and secured the second, a penalty, converted by **John Dreyer**.

VILLA CONQUERED

But the next visitors to Kenilworth Road were summarily despatched—and those were Aston Villa about whom so many football scribes have eulogised this autumn. **Kingsley Black** set Luton on their way just before the interval and **Lars Elstrup** settled the affair near the end thus ensuring that Luton gained the victory they emphatically deserved.

At the City Ground, Nottingham, a brace of goals from **Lars Elstrup** brought the Town from behind and only a Nigel Clough effort denied Luton a prestigious win.

Luton salvaged a point from a 1-1 draw with Arsenal, but in the closing stages looked the side more likely to snatch victory.

LUTON MANAGER:

JIMMY RYAN

Jimmy Ryan was promoted from Reserve Team Manager to take full charge of Luton Town in January 1990 in succession to Ray Harford, and in a breathtaking finale, for which he deserved huge credit, saved The Hatters from relegation by winning all of their last three matches of the season—including their penultimate one, against the Palace, with a goal in the last minute of the game.

Jimmy is a native of Stirling and developed locally as a talented inside-forward. He began his football League career with Manchester United who he joined as an 18-year-old from Corrie Hearts in January 1963 but he only played 24 times for United in the Football League over the next seven years, although he did gain a European Cup Winners medal with them in 1968 as a non-playing substitute, following their Wembley triumph over Benfica in extra time.

Jimmy moved to Kenilworth Road in April 1970 and went onto make 184 League appearances for The Hatters over the ensuing six years. He was a member of Luton's side that won promotion to the 1st Division in 1974, missing just two matches in that success.

CRYSTAL PALACE v LUTON TOWN

The clubs last meeting at Selhurst Park was on Sunday 16th December

1990 in the Barclays League Division One.

CRYSTAL PALACE 1 (Bright) LUTON TOWN 0

Attendance 15,195

Palace: Martyn, Humphrey, Shaw, Gray, Young, Thorn, Salako, Thomas, Bright, Wright, McGoldrick.

Luton: Chamberlain, Johnson, Harvey, Williams, McDonough, Dreyer, Elstrup, Preece, Dowie, Beaumont (Farrell), Black (Reece).

Palace v Luton Complete record of previous post-war meetings FOOTBALL LEAGUE

Season	Div.	at Selhurst Park	at Kenilworth Road
1963-64	3	PALACE 1 Dowssett LUTON 1 Jardine	LUTON 0 PALACE 4 Dowssett, Allen 2, Holton
1973-74	2	PALACE 1 Rogers LUTON 2 Anderson, Butlin	LUTON 2 Ryan, Bytlin PALACE 1 Preece
1977-78	2	PALACE 3 Silkman 2, Sansom LUTON 1 Price, Boersma, R. Fletcher	LUTON 1 Fuccillo (pen.) PALACE 0
1978-79	2	PALACE 3 Swindlehurst, Hilaire, Murphy LUTON 1 Fuccillo (pen.)	LUTON 0 PALACE 1 Nicholas
1981-82	2	PALACE 3 Smillie 2, Mahbutt LUTON 3 Arlie, Moss (pen.), B. Stein	LUTON 1 Moss (pen.) PALACE 0
1989-90	1	LUTON 1 Wilson PALACE 1 Bright	LUTON 1 Dowie PALACE 0
1990-91	1	PALACE 1 Bright LUTON 0	LUTON 1 Dowie PALACE 1 Young

SOUTHERN FLOODLIT CUP

Round	Match
1958-59	SF PALACE 1 Barnett LUTON 0
	FOOTBALL LEAGUE CUP
1971-72	2 PALACE 2 T. Taylor, Queen LUTON 0
	F.A. CUP
1985-86	3 PALACE 1 K. Taylor LUTON 2 B. Stein, Preece
	FULL MEMBERS CUP
1988-89	3 PALACE 4 Bright 3, Wright LUTON 1 Dowie
1989-90	2 PALACE 4 Wright, Pardew, Bright 2 LUTON 1 Dowie

YOU SUPPLY THE TALENT MITRE SUPPLY THE REST!



mitre
FOOTBALL

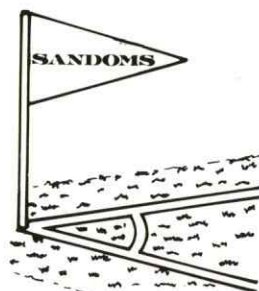


MITRE ARE THE SOLE MANUFACTURER & SUPPLIER TO THE ENGLISH FOOTBALL LEAGUE
OF THE EXCLUSIVE DELTA DESIGN OFFICIAL MATCH BALL.

Legal advice is just around the corner

For conveyancing, wills,
personal injury, family
law or simply legal
advice, talk to Sandoms
Solicitors.

With offices in
Beckenham, Deptford,
Peckham, South
Croydon and South
Norwood, we're just
around the corner.



YOUR LOCAL SANDOMS OFFICES

Doyle Chambers, 15 Station Road,
South Norwood, SE25 5AH.
Tel: 081-653 9899 Fax: 081-771 3528
Peckham: Tel: 071-639 5726

SANDOMS
— SOLICITORS —

Caterino's
Ristorante Italiano
The Authentic
Italian Restaurant
with lots of
Seafood Specialities

1540 London Road Norbury, London SW16 4EU
Tel: 081-764 6022 Answerphone: 081-764 6022



Special offer to ALL Crystal
Palace Supporters call
Geoff Davidson
081-390-4744
0737 353896

Den Pictures

LUTON TOWN



RICHARD HARVEY: Born at Letchworth, in April 1969, Harvey, following a number of fine performances for the Combination side as well as captaining the successful Youth team, made his deserved full League debut at home to Queens Park Rangers in November 1986. He made four further appearances towards the end of 1986/87, showing maturity beyond his years and is now recognised as a First team squad member. He has toured South America with the England Under-19 squad.

JOHN DREYER: Signed at a cost of £140,000 from Oxford United in the summer of 1988, he joined United from Wallingford Town and appeared on loan for Torquay and Fulham before making his Oxford debut at home to Coventry in October 1986. Normally a left-back he was drafted into central defence last season when he made the number six shirt his own with a string of outstanding performances. He turned down a big money move to Crystal Palace.

MARVIN JOHNSON: Another former member of the talented Youth side. Wembley-born Johnson has appeared regularly in central defence where his exceptional pace marks him out as a man for the future. A popular player with the fans for all over style.

GRAHAM RODGER: Signed in 1989 from Coventry City where he had been an almost permanent understudy to Brian Kilcline and Trevor Peake. Glasgow-born Rodger, is an England Under-21 International and scored the Coventry winner against the Town at Highfield Road two seasons ago. He had terrible luck with injuries and missed virtually all of last season.

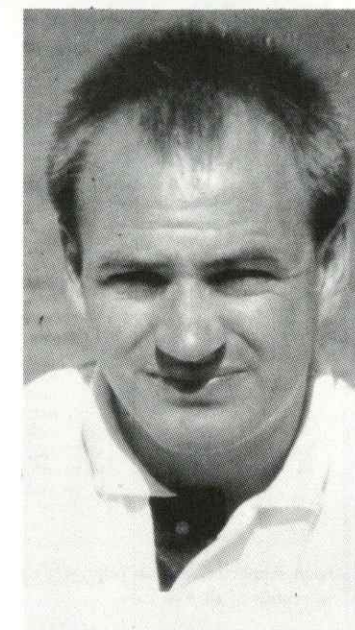
IAIN DOWIE: A prolific scorer for non-league Hendon from whom he was signed for £30,000 early in 1989. Before turning professional, Dowie was a Development Engineer with British Aerospace and is determined to make as big a success with his footballing career. Last season he progressed greatly and scored goals and also won a place in Billy Bingham's Northern Ireland International team.

JULIAN JAMES: Locally-born James is another from the Town's Youth scheme hoping to make a name for himself after establishing himself in the First team last season. He came on as substitute three times towards the end of 1987/88 including the 1-1 draw at Anfield and appeared on four occasions in 1988-89. Last season he played 19 games in the First division as a reliable and strong left back. He was picked for the England U-21 squad for the mini World Cup tournament in Toulon last summer.

ALEC CHAMBERLAIN: A tall and agile goal-keeper, Alec made his League debut for Colchester in January 1983 and after many fine displays, Everton were prompted to pay £80,000 for his services in the summer of 1987. Unfortunately, due to the form of Welsh International Neville Southall, he did not manage a League appearance at Goodison Park but instead had a spell on loan at Tranmere. He signed for Luton in the summer of 1988 and secured first choice keeper at the latter end of 1988/89. He was ever present again last season.

STEVE WILLIAMS: The Town's record signing at £300,000 Williams brings with him to Kenilworth Road a wealth of experience gained playing for Southampton, Arsenal and England. He made his League debut for the Saints in 1975/76 and signed for Arsenal for £550,000 in 1984. He joined Luton in the summer of 1988 but has yet to find the form to hold down a consistent place in the team.

LARS ELSTRUP: Danish International striker. Luton Town's record transfer signing in August 1989 from Odense, Denmark. A powerful goal scoring striker, Lars hit 6 goals in his first 12 International appearances for Denmark. He previously played for Ajax, Amsterdam. Luton paid a fee of approximately £650,000 for his services, but two cartilage operations last season held up his progress.



DAVID PREECE: Born at Bridgnorth on May 28th 1963. He was picked for England's "B" team in midfield. He was signed by Luton Town from Walsall for £150,000 in December 1984. He scored in his debut against Aston Villa. A busy left-sided midfielder player known for his accurate and imaginative passing.

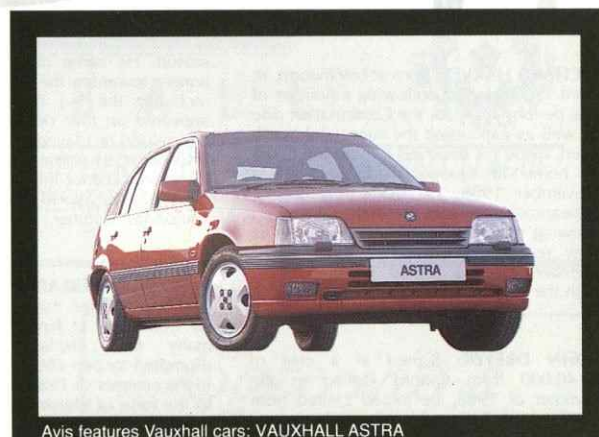
JASON REES: A midfielder player, who was born in Aberdare, Wales. Aged 20 and signed professional contracts from being an apprentice player to make his first team debut against Manchester Utd March 1990. He was picked for the Welsh U-21 squad.

MARK PEMBRIDGE: Twenty year old defender who has been with the Hatters as a trainee and now a contract professional. At just 5'7" he may be one of the smallest players on the field but certainly has a high degree of skill.

SEAN FARRELL: Standing over six feet tall Sean is a talented midfielder man who has been with his club for several seasons. Born in Watford and yet to make an impact, he perhaps has plenty to offer the Hatters in future seasons.

FREE UPGRADE

WHEN YOU NEXT RENT A CAR



Avis features Vauxhall cars: VAUXHALL ASTRA



Avis features Vauxhall cars: VAUXHALL CAVALIER

As a team supporter, we can offer you a great weekend deal on rentals of all Avis cars.

Firstly, we can put a free up-grade your way. This means you can rent a car from one level and we will give you a car from the next level up at no extra charge. For instance, rent a Vauxhall Astra and drive away in a superb Vauxhall Cavalier.

Secondly, this is a real chance to enjoy all the benefits of the country's No. 1 car rental company at a fully-inclusive, local price. Most of our cars are, on average, less than 6 months old and free maps are provided with every rental.

To book your weekend car, simply phone your local Avis office featured below, tell them you are a supporter and book the car. When you collect the car, show the rental agent your Club Membership Card, match ticket or programme and a full car up-grade will be yours.

You can rent a car on these terms anywhere in the UK, so whether you're supporting at home or away, get in touch with an Avis office today.

AVIS Local

London (Southwark), 69 Borough Road, London SE1 1DW Tel: 071-928-6663/4

London (Belgravia), 35 Headfort Place, Belgravia (Hyde Park Corner), London SW1X 7DE Tel: 071-245-9862

London (Euston), 88 Eversholt Street, London NW1 1BP Tel: 071-387-5481

London (Marble Arch), 68 North Row, Off Park Lane (Marble Arch) W1R 1DE Tel: 071-629-7811



RESERVES AND YOUTH

Happier times for Jeff Hopkins.

DISAPPOINTMENT FOR JEFF!!

Popular centre-half Jeff Hopkins has had a season that he will want to forget. Whilst most of the Palace players have had a season to remember, Jeff has been plagued by injury since the beginning of August. He has not as of yet featured in the first-team limelight and the Swansea-born centre-half has been fit to play in a mere three Reserve team outings. However, Jeff has been making valiant efforts to reach 100% fitness, but he has not yet reached his goal.

It is though, a credit to Jeff's ability that Wales national team manager, Mike England named Jeff as a member of his squad to face the Republic of Ireland at Wrexham three weeks ago. Unfortunately, injury meant that Jeff was forced into making the decision of pulling out of the squad. Undoubtedly, Jeff's most memorable moment at Palace was when he skippered the side in the vital promotion play-off match against Blackburn Rovers in June 1989.

We all hope that Jeff can regain full fitness and enjoy plenty more great occasions in a Palace shirt.



SEASON 1990-91 SOUTH EAST COUNTIES LEAGUE DIVISION 2

Player	Apps.	Goals	Player	Apps.	Goals
Brazier	15	8	McPherson	16	0
Chester	14	4	Millard	3	1
Cornish	2	0	Myatt	9	3
Cutler	11	0	Ndah	(1)	0
Edwards	7(1)	1	Oliva	10	0
Finnan	1(2)	0	Pepper	18	10
Fitzgerald	5	0	Rollison	7(2)	3
Glass	18	0	Sparrow	2	0
Gordon	8	2	Thomas	11	1
Halpin	12	4	Tomlin	1(3)	0
Harding	2	0	Vincent	1	0
Hawthorne	2(2)	0	Watts	12(4)	11
Holman	11(1)	1	Own Goal		1
McCall	7(6)	1			



The youth players having been put through their paces at Mitcham.

SOUTH EAST COUNTIES LEAGUE DIVISION TWO 1990-91

1990			13	Aldershot	7-2	15	Oxford United	3-0	Mar. 2	Brighton & Hove
Sept. 1	Reading	1-2	20	Tottenham	2-3	22	Oxford United	1-2	9	Southampton
5	Norwich (SJFC-P)	1-1	27	Luton Town	3-1				16	Bristol City
8	Maidstone United	3-0	Nov. 3	Brighton & Hove	0-0	1991			23	AFC Bournemouth
11	Norwich (SJFC-PR)	4-0	10	Southampton	1-6	Jan. 12	Reading	2-1	Apr. 6	Brentford
15	Bournemouth (LC1)	1-4	17	Bristol City	4-1	17	Chelsea (FAYC3)	0-4	20	Colchester United
19	Southend (SJFC1)	2-2	19	QPR (FAYC2)	3-3	19	Maidstone United	4-1	27	AFC Bournemouth
22	Bristol Rovers	1-1	29	QPR (FAYC2R)	1-0	26	Bristol Rovers	2-3	May 4	Aldershot
29	Swindon Town	4-6	Dec. 1	Tottenham	5-3	Feb 2	Swindon Town	5-0	11	Colchester United
Oct. 6	Wimbledon	2-2	8	Brentford	4-1	23	Luton Town		18	Wimbledon

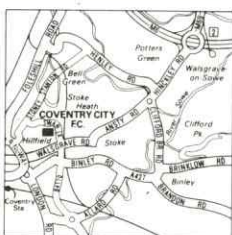


Barclays League Division One COVENTRY CITY v CRYSTAL PALACE

Saturday, 2nd March 1991
Kick-off 3.00pm

How to get there

From the South: M1 then M45 then A45 to Ryton on Dunsmore. Third exit from roundabout, A423.



Right, B4110, over cross-roads, left at T-junction into Swan Lane for Coventry City FC.

Parking Information
Gosford Green car park on Walsgrave Road 200 yards away. Street parking.

Nearest railway station Coventry. Tel: 0203 555211.

Coaches: depart from Holmesdale Road at 10.30am.

Fare: £8 adults, £7 senior citizens and accompanied juniors under 16.

Special Train Departs Euston 12.25pm

Fare: £10.50 in advance
£11.00 on the day (no concessions).

PALACE AT COVENTRY

on Saturday 2nd March 1991

The West Midlands Police have asked us to draw our supporters attention to the fact that they are not prepared to tolerate obscene chanting or gestures, racist remarks or chants, the throwing of missiles, threatening or violent behaviour or any criminal act upon the occasion of our visit to Coventry on 2nd March.

Palace fans know how rigorously the West Midlands Police adhere to the above guidelines, so please don't spoil the day for yourself or for other supporters. We came away from Aston Villa with a fine reputation, please let's keep it that way.

In order to take advantage of official reduced price travel to Palace away matches supporters must be members of the Palace Club or Lifeline.

All major League grounds in Britain are equipped with CCTV funded by The Football Trust.

"Already, CCTV has had a major impact on the hooligan problem inside football grounds as well as proving extremely useful to monitor safety measures. If any trouble appears on the screen or is reported from any quarter of the ground, the CCTV can zoom in on the incident. The police can then record what occurs on colour video and on hard copy prints. Individuals can be picked out by facial appearance and the colour of their clothing. The evidential effect of such a video recording has proved formidable. It has persuaded hooligans, who would previously have sought to challenge oral evidence of identification, to plead guilty. Hooligans know cameras are keeping a roving watch and their activities in the ground are inhibited by that knowledge."

Lord Justice Taylor in his Final Report into the Hillsborough Stadium Disaster.



THE FOOTBALL TRUST
Helping the game



BOX OFFICE OPENING:—

Monday–Friday 9.30am to 5.00pm
Matchdays from 9.30am

FOR SAFETY'S SAKE
Please arrive early!

PLEASE NOTE:—MATCH TICKETS AT REDUCED PRICES FOR MEMBERS ARE AVAILABLE UP TO THIRTY MINUTES BEFORE THE KICK-OFF

PALACE v SOUTHAMPTON

Barclays League Division One Saturday, March 9th 1991. Kick-off 3.00pm

Members Stand Adult members £10. Juvenile/OAP members £5. Members guests £12.

Arthur Wait Stand Blocks U, V and W Adult members £10. Juvenile/OAP members £5. All non-members £12. Blocks S, T, X, Y and Z. Adult members £8. Juvenile/OAP members £4. All non-members £10.

Members Terrace Adult members £6. Juvenile/OAP members £4. Members guests £7.

Holmesdale Terrace Adult members £6. Juvenile/OAP members £4. All non-members £7.

PALACE v DERBY COUNTY

Barclays League Division One Saturday, March 16th 1991. Kick-off 3.00pm

Members Stand Adult members £10 Juvenile/OAP members £5 Members guests £12

Arthur Wait Stand Blocks U, V and W Adult members £10 Juvenile/OAP members £5 All non-members £12
Blocks S, T, X, Y and Z Adult members £8 Juvenile/OAP members £4 All non-members £10.

Members Terrace Adult members £6. Juvenile/OAP members £4. Members guests £7.

Holmesdale Terrace Adult members £6. Juvenile/OAP members £4. All non-members £7.

HOW TO PURCHASE TICKETS

- (1) Application by post: Postal applications will be accepted prior to any fixture provided the correct remittance and a stamped addressed envelope are enclosed with the application.
- (2) Dial-a-seat: Telephone the Direct Line number to the Ticket Office and purchase your tickets by Access or Visa—your tickets will be posted to you or can be collected.
- (3) Personal Application
 - (a) Call in to our Ticket Office and pay by cash/cheque/Access or Visa.
 - (b) Our Ticket Office will be open for the sale of future match tickets directly after a game.

PLEASE NOTE:

Access/Visa: For members bookings there will be a booking fee of 50p per transaction —non members booking fee is 50p per ticket.

REMEMBER TO PURCHASE YOUR TICKETS AT LEAST HALF AN HOUR BEFORE KICK-OFF TIME TO QUALIFY FOR MEMBERS REDUCED PRICES.

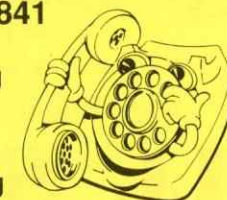
**PALACE
CLUBLINE
0898 400 333**

For the very latest ticket and travel information

(Calls to Clubline cost 33p/min
cheap rate 44p/min all other times)

**PALACE DIAL-A-SEAT
081-771 8841**

Tickets may be ordered on our Dial-A-Seat number using Access/Visa up to 5.00pm on Friday evening for Saturday games and up to 2.00pm in the case of evening games.



Sponsor a Goal!






ELLIOTTS WINE BAR
081-668 3361

SANDOMS SOLICITORS
071-639 7631

NICOLAS HALL & CO ACCOUNTANTS
071-506 2333

AUTOPLAN
081-684 6944

GEOFF DAVIDSON ANGLIAN WINDOWS
081-390 4744

AUGUSTUS BARNETT
071-476 1477

S. K. INVESTIGATIONS DETECTIVE AGENCY
081-647 1297
0860 767273

ELY TROPHY SHOP TONY COLLINS
ELY 662192

SEEBOARD
081-760 0299

DAVE HARPER CLIFTON ARMS

COLOURSHPERE LITHOGRAPHIC PRINTERS LTD
081-681 6851

P WALLER ALLMAT
081-680 0666

BURKE & CLEMENS CLEANING SERVICES
081-681 1819

CRYSTAL PALACE MARKETING DEPT.

WINDOWS DIRECT
081-679 6555

J.A.H. ROOFING
081-669 4307

BUTLERS
071-623 5222

CRYSTAL PALACE FUND RAISING DEPT.

LIFELINE
081-653 4462

GAIL GARBUTT THE EAGLE
081-680 8396

LETTS RESIDENTIAL
081-545 0811 OR
081-545 0799

THE ABOVE HAVE SPONSORED PALACE FOR £2 PER GOAL SCORED BY THE FIRST TEAM IN RECOGNISED COMPETITION. TO PARTICIPATE RING 081-653 4462 OR CALL AT THE CLUB OFFICE.

Bob 'The Cat' Bevan



And many other personalities available for after dinner speaking and all types of functions.

ALL STAR SPEAKERS

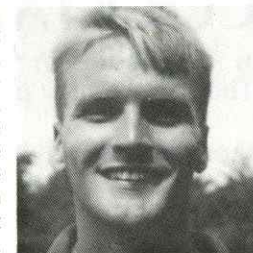
Enterprise House, 511/513 Elmers End Road, Bekenham, Kent BR3 3DD, Tel. 081 650 4926

Captain's Comment

The victory at Brighton was a good team performance. It's a long time since we played at the Goldstone Ground, and in the end we beat them decisively. The change of position gives me a break, being in the centre of defence, it takes the pressure off me. Andy Thorn was struggling with an ankle injury. I don't think the Boss wanted to risk him, thinking ahead to the all-important Arsenal game. I enjoy this defensive role, as long as it's not for too long.

Andy & Eric have been a great problem for the opposition's attack all this season, with Richard Shaw and John Humphrey helping equally. It's nice to know we have good players waiting in the wings; Stan Collymore came on against QPR with great confidence, Simon Osborne came on against Brighton, and frankly he looked brilliant. The pressure didn't affect his play.

Ian's 100th goal in that game could well have been followed by his 110th, he was hitting the ball so well. He is a great player and a great goal-scorer. Strikers are all different; Mark Bright seems to finish off a lot of his chances, but Ian creates more of his own chances by his skill against opponents. But the joy is to see them work together, one of soccer's great partnerships. Let's just hope that they continue to play together for many years, producing the goals that will keep the Eagles flying high.



Direct View



Evening All,

That made a change didn't it—I mean of course going down to the old Seagulls nest and completely ruffling their feathers. Well done the lads, especially young Ian—100 goals for Palace and Mark ain't that far behind with almost ninety as I write this. I am beginning to get the taste for those twin towers of Wembley again! Let's face it, we haven't been there for almost ten months now!—oops, sorry Ian, I almost forgot the night you overran the Cameroons! Anyway we have just got to do it tonight, and don't kid yourselves, that that is easy cos it's not. Anyhow get behind the lads as you did at the Goldstone and with a bit of luck and lot of skill we will be in the Zenith Data Systems Southern Area Final next month.

Eh, have you looked at the old fixture list lately, we have some cracking games left and the lads are capable of getting the points even though the opposition is top quality. We still have to travel to Coventry, Leeds, Sunderland, Wimbledon and not forgetting, Anfield (that's on Grand National Day, so let's hope that it's a one-horse race against them from Merseyside). At home we are left with Southampton, Derby, both Manchesters, Villa, Everton and Tottenham. All that lot to take place in just about ten weeks. It's going to be a busy time for everybody, but if you 'Get Behind 'Em' the prize is a trip to Europe—what time will we leave Holmsdale Road for Milan???

We are starting to get letters telling us about our fans serving in the Gulf. Keep them coming in and we will keep sending out the *Palace News*!

All I can say to you all tonight is enjoy the game.
Be Good.

STATIONERY

WESMID

SALES • SERVICE • LEASING • REPAIRS

Wesmid Typewriter and Office Supplies Co Ltd.

130-132 Verdant Lane, London SE6 1LH. Telephone: 081-698 7676 (5 lines)

For Friendly, Helpful Advice and Next Day Delivery.

Ring Our Team of Expert and Experienced Ladies.

Tel: 081-698 7676 Fax: 081-698 5618

ESTABLISHED 26 YEARS

MACHINE
SUPPLIES

PRINTING

FURNITURE

SELHURST *Scene*

EAGLES' CUP-TIE COCKTAIL

Last season The Eagles appeared in no fewer than 16 cup-ties in the three major knockout competitions, with Andy Gray and Geoff Thomas the only players to appear in all the games.

This season we are progressing steadily towards another (relatively) large number of cup matches, and have detailed them below, but this time seven players have appeared each time. Can you name them? (Answer below).

Date	Opponents	Venue	Competition	Result	Palace scorers	Attendance
Sept 25	Southend United	H	FLC2(i)	8-0	Bright 3, Wright 3 Hodges, Thompson	9,653
Oct 9	Southend United	A	FLC2(ii)	2-1	Young, Salako	5,199
Oct 30	Leyton Orient	H	FLC3	0-0		12,958
Nov 7	Leyton Orient	A	FLC3R	1-0	Bright	10,158
Nov 27	Southampton	A	FLC4	0-2		13,765
Dec 18	Bristol Rovers	H	FMC2	2-1	Gray, Salako	5,209
Jan 6	Nottingham Forest	H	FAC3	0-0		15,396
Jan 18	Brighton & Hove	A	FMC3	*2-0	Bright, Wright	9,633
Jan 21	Nottingham Forest	A	FAC3R	*2-2	Wright, Salako	23,201
Jan 26	Nottingham Forest	A	FAC3RR	0-3		22,164

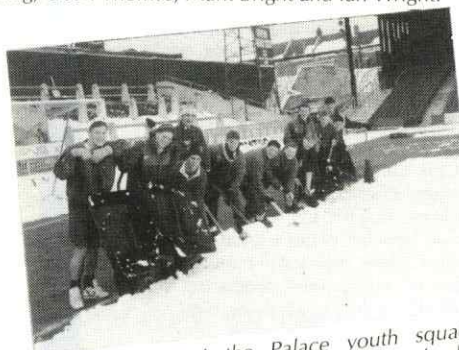
Key: *denotes after extra-time.

Answer: Nigel Martyn, John Humphrey, Richard Shaw, Eric Young, Geoff Thomas, Mark Bright and Ian Wright.

SNOW FUN



Volunteer supporters assemble to clear the pitch and terraces for the Queens Park Rangers game at Selhurst Park.



Player Power! the Palace youth squad together with "Supervisor" Dave Garland add their support to the clearance operations.



Chairman Ron Noades interviewed by "Cable Today" tells viewers of his optimism regarding the game going ahead.

ZENITH
data systems



FULL MEMBERS CUP THE FINALS

Season	Clubs - Result - Scorers	Attendance
1985-86	CHELSEA 5 (Speedie 3, Lee 2) MANCHESTER CITY 4 (Kinsey, Lillis 2 (1 pen), Rougvie o.g.)	68,000
1986-87	BLACKBURN ROVERS 1 (Hendry) CHARLTON ATHLETIC 0	40,000
1987-88	READING 4 (Gilkes, Beaven (pen), Tait, Smillie) LUTON TOWN 1 (Harford)	61,740
1988-89	NOTTINGHAM FOREST 4 (Parker 2, Chapman 2) EVERTON 3 (Cottee 2, Sharp)	46,606
1989-90	CHELSEA 1 (Dorigo) MIDDLESBROUGH 0	76,369



John Humphrey on the losing side in 1986/87 but hoping for better things this year.

Youth Team Sponsorship



BEN HARDING

D & S Electrics
081-542 5536



JOHN MYATT

J.M.C. Scaffold
Services
081-670 2720



DEAN GORDON

Training Kit: De
Ver Cycles.
Playing Kit: Crete
School of Motoring.
081-689 8524



MARK HOLMAN

IS & G Steel
Stockholders



GRANT WATTS

Penwatt General Builders
081-764 3661
Kingswood Scaffolding
081-670 4658



JIMMY GLASS

BERNIE



MARK HALPIN

GRIP HOUSE LTD.
TEL: 081-578 2382



PAUL BRAZIER

In Loving Memory of
Peter Bleasdale from
Nigel his Son.
"We watched together".



MARK PEPPER

PALACE
DETECTIVES



SCOTT CUTLER

PETE THE EAGLE



STUART McCALL

VANGUARD
SECURITIES

Like to sponsor a youth player?
For details phone Palace
Marketing 081-653 4462

DIVISION ONE
1990-91

Date	Opponents	R	F	A	Pos.	Att.	Martyn	Humphrey	Shaw	Gray	Young	Thorn	Barber	Thomas	Salako	Wright	Hodgess	O'Reilly	Dennis
Aug. 25	Luton Town	D	1	1	—	9,583	Martyn	Humphrey	Shaw	Gray	Young	Thorn	Barber	Thomas	Salako	Wright	Hodgess	O'Reilly	Dennis
Aug. 28	Sheffia United	W	2	1	—	27,101	Martyn	Humphrey	Shaw	Gray	Young	Thorn	Salako	Thomas	Thompson	Wright	Hodgess	Barber	Hedman
Sept. 1	Sheffia United	W	3	0	—	16,831	Martyn	Humphrey	Shaw	Gray	Young	Thorn	Salako	Thomas	Thompson	Wright	Hodgess	Barber	Bright
Sept. 8	Nottingham Forest	D	2	2	4	20,545	Martyn	Humphrey	Shaw	Hedman	Young	Thorn	Salako	Thomas	Thompson	Wright	Barber	Bright	Hedman
Sept. 15	Nottingham Forest	D	2	2	4	20,545	Martyn	Humphrey	Shaw	Hedman	Young	Thorn	Salako	Thomas	Thompson	Wright	Barber	Bright	Hedman
Sept. 22	Tottenham Hotspur	D	1	1	5	34,859	Martyn	Humphrey	Shaw	Gray	Young	Thorn	Salako	Thomas	Thompson	Wright	Barber	Bright	Hodges
Sept. 29	Southend United (LC2 1L)	W	8	0	—	9,653	Martyn	Humphrey	Shaw	Gray	Young	Thorn	Salako	Thomas	Thompson	Wright	Barber	Hodges	Hodges
Sept. 29	Derby County	W	2	0	4	15,202	Martyn	Humphrey	Shaw	Gray	Young	Thorn	Salako	Thomas	Thompson	Wright	Barber	Hodges	Hodges
Oct. 6	Leeds United	D	1	1	4	22,445	Martyn	Humphrey	Shaw	Gray	Young	Thorn	Salako	Thomas	Thompson	Wright	Barber	Hodges	Hodges
Oct. 9	Southend United (LC2 2L)	W	2	1	4	5,199	Martyn	Humphrey	Shaw	Gray	Young	Thorn	Salako	Thomas	Thompson	Wright	Barber	Hodges	Hodges
Oct. 20	Everton	D	0	0	4	24,504	Martyn	Humphrey	Shaw	Gray	Young	Thorn	Salako	Thomas	Thompson	Wright	Barber	Hodges	Hodges
Oct. 27	Wimbledon	W	4	3	4	16,778	Martyn	Humphrey	Shaw	Gray	Young	Thorn	Salako	Thomas	Thompson	Wright	Barber	Hodges	Hodges
Oct. 30	Leyton Orient (LC3)	D	0	0	—	12,958	Martyn	Humphrey	Shaw	Gray	Young	Thorn	Salako	Thomas	Thompson	Wright	Barber	Hodges	Hodges
Nov. 3	Manchester United	L	0	2	4	45,724	Martyn	Humphrey	Shaw	Gray	Young	Thorn	Salako	Thomas	Thompson	Wright	Barber	Hodges	Hodges
Nov. 7	Leyton Orient (LC3 R)	W	1	0	—	10,158	Martyn	Humphrey	Shaw	Gray	Young	Thorn	Salako	Thomas	Thompson	Wright	Barber	Hodges	Hodges
Nov. 10	Arsenal	D	0	1	4	28,181	Martyn	Humphrey	Shaw	Gray	Young	Thorn	Salako	Thomas	Thompson	Wright	Barber	Hodges	Hodges
Nov. 17	Queens Park Rangers	W	2	0	4	14,360	Martyn	Humphrey	Shaw	Gray	Young	Thorn	Salako	Thomas	Thompson	Wright	Barber	Hodges	Hodges
Nov. 24	Southampton	W	3	2	4	15,851	Martyn	Humphrey	Shaw	Gray	Young	Thorn	Salako	Thomas	Thompson	Wright	Barber	Hodges	Hodges
Nov. 27	Southampton (LC4)	L	0	2	—	13,765	Martyn	Humphrey	Shaw	Gray	Young	Thorn	Salako	Thomas	Thompson	Wright	Barber	Hodges	Hodges
Dec. 1	Coventry City	W	2	1	3	17,052	Martyn	Humphrey	Shaw	Gray	Young	Thorn	Salako	Thomas	Thompson	Wright	Barber	Hodges	Hodges
Dec. 8	Chelsea	L	1	2	4	21,558	Martyn	Humphrey	Shaw	Gray	Young	Thorn	Salako	Thomas	Thompson	Wright	Barber	Hodges	Hodges
Dec. 16	Luton Town	W	1	0	3	15,195	Martyn	Humphrey	Shaw	Gray	Young	Thorn	Salako	Thomas	Thompson	Wright	Barber	Hodges	Hodges
Dec. 18	Bristol Rovers (ZDSC2)	W	2	1	—	5,209	Martyn	Humphrey	Shaw	Gray	Young	Thorn	Salako	Thomas	Thompson	Wright	Barber	Hodges	Hodges
Dec. 22	Manchester City	W	2	0	3	25,321	Martyn	Humphrey	Shaw	Gray	Young	Thorn	Salako	Thomas	Thompson	Wright	Barber	Hodges	Hodges
Dec. 26	Sunderland	W	2	1	3	15,560	Martyn	Humphrey	Shaw	Gray	Young	Thorn	Salako	Thomas	Thompson	Wright	Barber	Hodges	Hodges
Dec. 30	Liverpool	L	0	2	3	26,280	Martyn	Humphrey	Shaw	Gray	Young	Thorn	Salako	Thomas	Thompson	Wright	Barber	Hodges	Hodges
Jan. 1	Aston Villa	W	1	0	3	25,523	Martyn	Humphrey	Shaw	Gray	Young	Thorn	Salako	Thomas	Thompson	Wright	Barber	Hodges	Hodges
Jan. 6	Nottingham Forest (FAC3)	D	0	0	—	15,396	Martyn	Humphrey	Shaw	Gray	Young	Thorn	Salako	Thomas	Thompson	Wright	Barber	Hodges	Hodges
Jan. 12	Sheffia United	W	1	0	3	17,139	Martyn	Humphrey	Shaw	Gray	Young	Thorn	Salako	Thomas	Thompson	Wright	Barber	Hodges	Hodges
Jan. 19	Nottingham Forest (FAC3 R)	L	1	3	3	17,201	Martyn	Humphrey	Shaw	Gray	Young	Thorn	Salako	Thomas	Thompson	Wright	Barber	Hodges	Hodges
Jan. 21	Nottingham Forest (FAC3 2R)	D	2	2	—	23,201	Martyn	Humphrey	Shaw	Gray	Young	Thorn	Salako	Thomas	Thompson	Wright	Barber	Hodges	Hodges
Feb. 2	Nottingham Forest	W	1	0	3	22,164	Martyn	Humphrey	Shaw	Gray	Young	Thorn	Salako	Thomas	Thompson	Wright	Barber	Hodges	Hodges
Feb. 16	Queens Park Rangers (FAC5)	D	0	0	3	17,045	Martyn	Humphrey	Shaw	Gray	Young	Thorn	Salako	Thomas	Thompson	Wright	Barber	Hodges	Hodges
Feb. 18	Brighton & Hove Albion (ZDSC3)	W	2	0	—	15,676	Martyn	Humphrey	Shaw	Gray	Young	Thorn	Salako	Thomas	Thompson	Wright	Barber	Hodges	Hodges
Feb. 23	Arsenal	L	0	4	3	9,633	Martyn	Humphrey	Shaw	Gray	Young	Thorn	Salako	Thomas	Thompson	Wright	Barber	Hodges	Hodges
Mar. 2	Coventry City	L	0	4	3	9,633	Martyn	Humphrey	Shaw	Gray	Young	Thorn	Salako	Thomas	Thompson	Wright	Barber	Hodges	Hodges
Mar. 9	Southampton (FAC6)	L	0	4	3	9,633	Martyn	Humphrey	Shaw	Gray	Young	Thorn	Salako	Thomas	Thompson	Wright	Barber	Hodges	Hodges
Mar. 16	Derby County	L	0	4	3	9,633	Martyn	Humphrey	Shaw	Gray	Young	Thorn	Salako	Thomas	Thompson	Wright	Barber	Hodges	Hodges
Mar. 23	Leeds United	L	0	4	3	9,633	Martyn	Humphrey	Shaw	Gray	Young	Thorn	Salako	Thomas	Thompson	Wright	Barber	Hodges	Hodges
Mar. 30	Sunderland	L	0	4	3	9,633	Martyn	Humphrey	Shaw	Gray	Young	Thorn	Salako	Thomas	Thompson	Wright	Barber	Hodges	Hodges
Apr. 1	Manchester City	L	0	4	3	9,633	Martyn	Humphrey	Shaw	Gray	Young	Thorn	Salako	Thomas	Thompson	Wright	Barber	Hodges	Hodges
Apr. 6	Liverpool	L	0	4	3	9,633	Martyn	Humphrey	Shaw	Gray	Young	Thorn	Salako	Thomas	Thompson	Wright	Barber	Hodges	Hodges
Apr. 13	Aston Villa (FAC SF)	L	0	4	3	9,633	Martyn	Humphrey	Shaw	Gray	Young	Thorn	Salako	Thomas	Thompson	Wright	Barber	Hodges	Hodges
Apr. 20	Everton	L	0	4	3	9,633	Martyn	Humphrey	Shaw	Gray	Young	Thorn	Salako	Thomas	Thompson	Wright	Barber	Hodges	Hodges
May 4	Wimbledon	L	0	4	3	9,633	Martyn	Humphrey	Shaw	Gray	Young	Thorn	Salako	Thomas	Thompson	Wright	Barber	Hodges	Hodges
May 11	Manchester United	L	0	4	3	9,633	Martyn	Humphrey	Shaw	Gray	Young	Thorn	Salako	Thomas	Thompson	Wright	Barber	Hodges	Hodges
May 18	FA Cup Final	L	0	4	3	9,633	Martyn	Humphrey	Shaw	Gray	Young	Thorn	Salako	Thomas	Thompson	Wright	Barber	Hodges	Hodges
May 25	Tottenham Hotspur	L	0	4	3	9,633	Martyn	Humphrey	Shaw	Gray	Young	Thorn	Salako	Thomas	Thompson	Wright	Barber	Hodges	Hodges

Home matches and scorers in bold type. () Number of goals scored, p Penalty, †Player substituted.
● Substitute used. Sent off. *Own goal. *Opposition Own goal.

BARCLAYS LEAGUE DIVISION ONE
(League positions up to 23rd February 1991)

P	W	D	L	F	A	W	D	L	F	A	Pts
1. Arsenal*	25	10	2	0	30	7	6	1	17	7	54
2. Liverpool	25	10	2	0	30	7	6	4	3	17	54
3. Crystal Palace	26	7	4	1	17	12	7	3	4	17	49
4. Leeds United	24	8	2	2	26	11	4	5	3	12	43
5. Manchester United†	24	7	3	3	23	11	4	5	2	14	40
6. Wimbledon	26	7	4	3	24	16	3	5	4	17	39
7. Manchester City	24	8	1	3	20	14	2	7	3	16	38
8. Tottenham Hotspur	25	7	4	2	26	15	3	4	5	10	38
9. Chelsea	26	8	5	1	22	14	2	1	9	17	36
10. Norwich City	25	7	1	5	21	23	3	2	7	11	33
11. Nottingham Forest	25	5	3	4	20	16	3	5	5	19	32
12. Everton	26	7	3	4	21	11	1	3	8	9	30
13. Aston Villa	24	5	6	0	16	8	1	4	8	10	28
14. Southampton	25	5	3	3	19	13	2	2	10	17	26
15. Luton Town	25	5	4	4	18	14	2	1	9	12	27
16. Coventry City	25	5	5	3	18	13	1	2	9	5	25
17. Sunderland	26	5	4	3	18	17	1	3	9	14	27
18. Q.P.R.	26	4	3	5	18	17	2	2	8	13	25
19. Sheffield United	25	4	2	6	12	15	2	2	8	8	22
20. Derby County	25	2	7	4	13	18	2	0	10	8	25

*Arsenal 2pts deducted. †Manchester United 1pt deducted.

SOUTH EAST COUNTIES LEAGUE - DIVISION TWO

P	W	D	L	F	A	Pts
Wimbledon	18	16	2	0	60	34
Oxford United	20	11	5	4	43	30
Bristol Rovers	19	10	3	6	41	29
Crystal Palace	19	10	3	6	54	35
Aldershot	20	9	3	7	44	39
Southampton	19	9	4	6	39	28
Brighton & Hove	21	7	6	8	37	31
Reading	21	6	7	8	37	31
AFC Bournemouth	16	8	2	6	39	37
Tottenham Hotspur	21	7	6	7	45	20
Luton Town	22	6	3	13	43	53
Swindon Town	18	5	5	8	29	47
Bristol City	18	5	4	9	19	26
Colchester United	15	5	3	7	29	60
Malden United	20	5	1	14	29	61
Brentford	17	2	6	9	24	42

TODAY'S STATISTICS

Team	Crystal Palace	Luton Town	Palace	Luton Town
Scorers				
Full-Time				
Half-Time				
Attendance				
Substitutions				
Palace				
Luton Town				

FOOTBALL
COMBINATION
FIXTURES 1990/91

Aug. 28	Charlton Athletic	W 4-1
Sept. 5	Fulham	D 0-0
8	Arsenal	L 1-2
12	Southampton	W 5-1
17	Millwall	D 3-3
25	Watford	D 0-0
Oct. 1	Portsmouth	D 2-2
11	West Ham United	W 3-1
13	Tottenham	W 4-3
22	Brighton & Hove	W 3-0
Nov. 1	Millwall	L 0-3
3	Luton Town	D 0-0
12	Charlton Athletic	L 1-2
17	Southampton	L 0-2
Dec. 3	Norwich City	W 3-0
19	Ipswich Town	W 4-1
29	Wimbledon	D 0-0
Jan. 23	Reading	W 2-1
26	Ipswich Town	L 2-3
30	Watford	D 3-3
Feb. 25	Swindon Town	
Mar. 6	Brighton & Hove	
11	Arsenal	
15	Oxford United	
18	Luton Town	
25	Chelsea	
27	Reading	
Apr. 3	Q.P.R.	
10	Swindon Town	
16	Chelsea	
22	Fulham	
24	Tottenham Hotspur	
29	West Ham United	
May 2	Q.P.R.	
6	Wimbledon	
T.B.A.	Portsmouth	
T.B.A.	Oxford United	
T.B.A.	Norwich City	

OVENDEN PAPERS
FOOTBALL COMBINATION
League table. Season 1990-91
(up to and including 20/2/91)

	P	W	D	L	F	A	Pts
Tottenham Hot.	25	16	2	7	49	50	
Wimbledon	22	14	4	4	34	18	46
Arsenal	24	13	6	5	43	27	45
Chelsea	21	14	1	6	49	25	43
Portsmouth	23	10	7	6	37	26	37
Luton Town	25	10	5	10	42	36	35
Norwich City	21	9	7	5	33	24	34
Q.P.R.	24	9	7	8	42	43	34
Millwall	23	9	6	8	50	34	33
Southampton	24	9	5	10	32	42	32
Crystal Palace	20	8	7	5	40	28	31
Ipswich Town	25	8	6	11	32	36	30
Oxford United	22	8	3	11	34	31	27
Brighton & Hove	20	8	3	9	29	30	27
Swindon Town	23	7	6	10	35	41	27
Charlton Athletic	21	7	4	10	34	37	25
West Ham United	21	7	2	12	30	51	23
Watford	23	5	6	12	27	55	21
Fulham	23	5	3	16	25	55	18
Reading	24	3	4	15	19	48	16



TEAMCHECK

CRYSTAL PALACE

Red and blue shirts, red shorts, red socks



LUTON TOWN

White shirts, Navy shorts

NIGEL MARTYN Many great saves to his credit this season. Cornwall man Nigel is one of the League's finest keepers.

JOHN HUMPHREY John played for former club Charlton in a full members Cup Final, sadly finishing on the losing side.

RICHARD SHAW Has now become the regular choice for the Eagles left back shirt.

ANDY GRAY A midfield man with a flair for mounting high powered attacking runs and turning 'throws' into corners.

ERIC YOUNG Ex Wimbledon central defender who had a fine game against Brighton last week.

ANDY THORN Missed the last Zenith tie through injury but hopefully on duty tonight.

JOHN SALAKO December regional young Eagle of the month who scored from the halfway line against Forest in an FA Cup replay.

GEOFF THOMAS (C) Team Captain who has recently had to cover a central defensive position.

MARK BRIGHT A star striker with the ability to hold and distribute. Scorer at Brighton last week.

IAN WRIGHT Scored his 100th goal at the Goldstone Ground.

PHIL BARBER Phil is a skilful winger who is the Eagle's longest serving player. Played a fine game against Brighton.

EDDIE McGOLDRICK Fast and direct Eddie is a true winger with the ability to get to the 'Goal-Line' and release pinpoint centres.

ALAN PARDEW Ex-Yeovil man who is a talented midfield performer with the ability to get forward into scoring positions.

Referee: Mr. L. C. SHAPTER
Reserve Official:

1 ALEC CHAMBERLAIN Made his league debut for Colchester in 1983. Has been the regular first choice since 1989.

2 MARVIN JOHNSON Joined Luton as an apprentice. A defender with excellent future prospects.

3 RICHARD HARVEY England Youth Team defender who made his debut against QPR in 1986.

4 DAVID BEAUMONT Joined Luton in 1989 from Dundee United. A Scottish youth and under 21 international midfielder.

5 GRAHAM RODGER Ex Coventry City man who has played for England at under 21 level.

6 JOHN DREYER Big central defender who could have easily become a Palace player two seasons ago.

7 LARS ELSTRUP A Danish international striker who needs no introduction. Fast and dangerous he is certainly 'one to watch'.

8 DAVID PREECE Ex-Walsall midfielder who joined Luton Town in the 1984/85 season.

9 IAIN DOWIE Highly rated Luton striker who scored against Palace in the opening match of the season.

10 MARK PEMBRIDGE 20 year old who has been with the club from his trainee days.

11 JASON REECE Welsh born midfield youngster who made his Luton debut against Manchester United last March.

12 SEAN FARRELL Now in his fifth season with the Hatters. This midfield man spent a spell on loan to Colchester.

14 JULIAN JAMES Local born defender who has progressed through the youth system at Kenilworth Road.

Linesmen: Mr. N. J. LUDLOW (Yellow Flag)
Mr. J. D. SMYTHE (Red Trim)

**PALACE TEAMCHECK
SPONSORED BY**

BANAMAN SIGNS
☎ 081-773 4644

PALACE CLUBLINE 0898 400 333

Calls to Clubline cost 33p/min cheap rate 44p/min all other times.

**TRAINERS
BENCH
SPONSOR**

**BARRY & SUE
KITCHERSIDE**

**TODAY'S MITRE
MATCH BALL
SPONSOR**

**SEABROOK
GRAHAM
CARPETS**
☎ 081-462 8416

Bukta

**BUKTA
REPLICA KIT**

Available from the
Club Shop and
local stockists

