

1991

TOWN

HAPPY NEW YEAR

OFFICIAL PROGRAMME £1.20

LUTON

1991



Saturday, December 29, 1990, Kick-off 3 p.m

CHELSEA

BARCLAYS FOOTBALL LEAGUE DIVISION ONE

This match is sponsored by: Luton International Airport



• Lars Elstrup takes control and shields the ball from Palace defender Eric Young.

APOLLO SYSTEMS LTD.

0582 34928 - 481102

- ★ Electrical Installations
- ★ Industrial and Commercial
- ★ Maintenance ★ Fire Alarms
- ★ C.C.T.V. Installations
- ★ Suspended Ceilings
- ★ Office Partitions & Screens
- ★ Fireproof Curtain Walls

39B SHAFTESBURY RD, LUTON

T.J. ALDRIDGE

Builders

302 Selbourne Rd. Luton

Tel: (0582) 505412-3



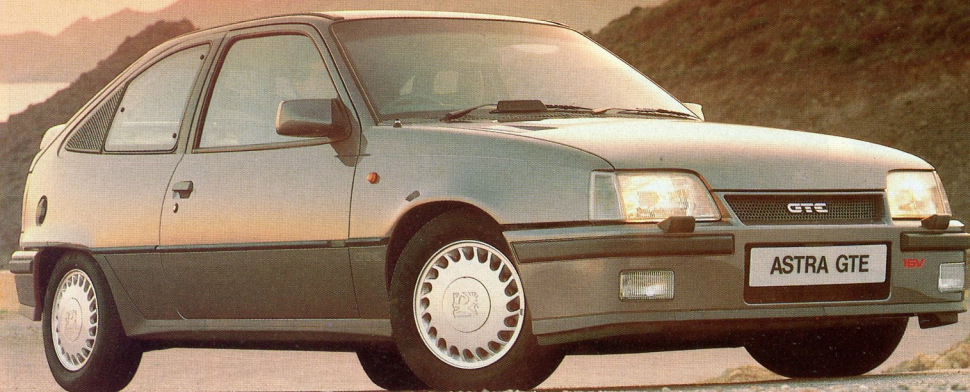
Roofing Specialists - General Building Repairs -
Brickwork - Plumbing - Painting & Decorating -
Carpentry - Electrical



• Sean Farrell (top) and Richard Harvey (below) put the pressure on Palace's defence during our 1-0 defeat at Selhurst Park.



STRIKING PERFORMER,
WORKS HARD, PLAYS WELL.



VAUXHALL Once driven, forever smitten



VAUXHALL IS BACKED BY THE WORLDWIDE RESOURCES OF GENERAL MOTORS. CAR SHOWN ASTRA GTE.



Kenilworth Road Stadium
1 Maple Road, Luton, Beds LU4 8AW

PRESIDENT

E.S. Pearson

CHAIRMAN

Peter Nelkin

DEPUTY CHAIRMAN

Roger Smith

DIRECTORS

C.J. Hudson, D.A. Kohler, H. Richardson,
D.G. Watson-Challis.

GENERAL MANAGER/SECRETARY

Bill Tomlins

TEAM MANAGER

Jim Ryan

VICE PRESIDENTS

R.L. Banks, C. Bygraves, I.E. Holmes, R. Larkinson,
R. Safranek, E. Waller

COMMERCIAL MANAGER

Wendy Grzybowska

ASSISTANT SECRETARY

John Smylie

HONOURS

LITTLEWOODS CUP WINNERS 1987/88
FA CUP FINALISTS - 1958-59
LITTLEWOODS CUP FINALISTS - 1968-69
SIMOD CUP FINALISTS - 1987-88
CHAMPIONS - DIVISION 3(S) 1936-37
CHAMPIONS - DIVISION 4 1967-68
CHAMPIONS - DIVISION 2 1981-82

LUTON TOWN HOTLINE

Match Tickets, Match Enquiries, Membership:

Ring - Cherry Newbery, Ticket Manager
Luton (0582) 411622/30748
Credit Card Hotline - 0839 664466 72hrs prior to match

Advertising and Match Sponsorship:

Ring - Wendy Grzybowska, Commercial Manager
Luton (0582) 411622

Stadium Hire/Special Events: Ring - Barbara Maclean,
Luton (0582) 411622

Umbro Sportswear/Souvenirs, Junior Hatters:

Ring - Bev Tyler,
Sales Supervisor Luton (0582) 411622

Banqueting Function Facilities: Ring - Peter Saul
Catering Manager Luton 411626

Promotions Office: Lotteries - Ring John Cornall
Development Executive Luton (0582) 411622

Soccerline: Ring - 0839 664 466 (44p per min peak)
(33p off peak)

Club Office hours:

8.45 am - 5 pm Luton (0582) 411622 Fax: (0582) 405070

Edited by: Robert Alexander Associates
PR and Media Consultants, Hitchin.

Pictures by: Apex Photography, Milton Keynes

**JIM
RYAN**

Welcome to Chelsea and our last home fixture in 1990. We seem to have spent a lot of time recently preparing for matches against London opponents with games against Arsenal, Crystal Palace and Tottenham during December and a visit to Wimbledon coming up on New Year's Day. As I write, we are recovering from the result at Selhurst Park where our passing did not measure up to its usual standards and Palace managed to squeeze a 1-0 win, ending for us a promising little unbeaten run. I hope we reacted well at White Hart Lane on the final Saturday before Christmas, producing a performance to make us proud. Against Palace, I could have no complaints about the effort and application which was total from every man in the team. Sometimes, however, it is necessary to be relaxed to pass well and it could be we were too highly motivated for the match. We allowed ourselves to be drawn into playing in a different style from usual which was disappointing. I believe strongly that our brand of football should be our own and bring us good results.

I was disappointed and puzzled too by some of the decisions made by the referee at Selhurst Park where we collected three bookings in a match which was not particularly hard or dirty. It was competitive and physical, yes, but nothing more and it is always frustrating for players when they are cautioned in these sort of games. Everyone was giving their all in a competitive game and while some apparent offences went unpunished others did not. This makes the decisions of the referee even more difficult to understand. Not knowing how the other games ended, it is difficult to comment...but I can say it has been a year to remember for me since I took this job last January. I have not lost all my hair and I am still working with a smile! A Happy New Year to everyone.

Jim Ryan

Mailbag & Supporters News

Want to air your views?

Please write to: The Editor, c/o Luton Town FC., Kenilworth Road Stadium, 1 Maple Road, Luton, Beds. LU4 8AW.

FOOTBALL WATCH

Dear Sir

I am grateful to your club for allowing this to be printed in your programme. I am responsible for policing all matches at Aston Villa Football ground and your team will shortly be playing away at Aston Villa. I hope all supporters enjoy their visit to our local ground. To ensure that you enjoy your visit, Aston Villa FC. Management, Players, Officials and the Police all subscribe to an initiative known as "Football Watch". It is an agreement on what is unacceptable behaviour in and around our Football Ground.

I am my officers adopt a consistent policy of enforcement aimed at eliminating unacceptable behaviour. The majority of fans attending football grounds do so to support their team and watch a game of football. It is the minority hooligan element which cause the trouble, and it is this minority hooligan element who should be aware that the following conduct is unacceptable at Aston Villa Football Ground, and my officers will take action to prevent such conduct which has an effect on the safety and well being of all supporters.

Obscene chanting and gestures
Racist remarks and chants
Throwing missiles
Threatening, disorderly or violent behaviour
Any criminal act
Drunkenness

Our aim is to play a part in making

your visit to Aston Villa Football Ground a safe and pleasant occasion. I hope you will agree that the actions of the minority should not be allowed to affect the safety, comfort and well being of any supporter. I hope the majority of law abiding supporters will co-operate with us in trying to eradicate this type of behaviour by that minority.

I hope all of you enjoy your visit to Aston Villa Football Club and I thank you for your support and co-operation in making the day trouble free for everyone.

Yours sincerely

J A Chalmers

Chief Superintendent

'D' Division HQ

Queens Road Police Station

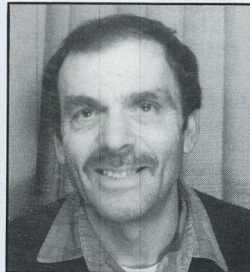
Queens Road

Aston Birmingham B6 7ND



• Steve Williams: Brian's top Hatter.

FAN FILE No 12: BRIAN SHEPHERD



Supporters Club No: 752

Job:- B.T. Payphone Engineer.

1st home game:-

v Arsenal, League South 1944-45 (lost 6-0). (First memorable game v Derby FA Cup)

1st away game:-

v Brentford Div 2. Oct 1948.

Favourite player (Past), Bernard Streten.

(Present), Steve Williams.

Favourite other team/s:- Southend Utd.

Best goal last season:-

Tim Breacker v Derby.

Best goal ever:- Graham

French v Mansfield.

How many league

grounds visited:- 88.

Favourite away ground:-

Boleyn Ground, West Ham.

Most memorable match:-

v Man City 1982/3.

EXECUTIVE MEMBERS

ABB ROBOTICS

AC COMMUNICATIONS (UK) LTD

ANACHEM LTD

MR. T. BAILEY

MRS. E. BAIN

MR. R. BANKS

BERVALE MEAD

INSURANCE BROKERS

BEVANGRACE

W.J. BILLINGTON

BLAKEY ENGINEERING

MR. J. BOYLAN

BROAD STREET PRINT

MR. R. BROOKS

CAMPBELL FROZEN FOODS

CAPITAL METALWORK

CHAMBERLAIN FURNISHINGS

CHILTERN RADIO

CLARENDON HATS

CRANE & STAPLES SOLICITORS

MR. T. COATES

MR. B. COLE

COMPLETE CONTRACTS

CONVOY INSTALLATIONS

MR. P. COOPER

DISCOUNT KING TYRE & EXHAUST CENTRE

DUPONT (UK)

FENNEMORES SOLICITORS

FILMERGRAPHIC PRESS

FLITWICK OIL COMPANY

MR. E. FOUNTAIN

F & T GOODWIN

V.G. GREEN & SON

MR. D. HALES

HANDSCOMBE FINANCIAL SERVICE

HANS-JURGEN (IMPORTERS)

R.W. HARVEY & SON

B. HICKS & COMPANY

HOLMES COMMERCIAL PROPERTY

HUMBERGROVE INSURANCE

JOHN LAING CONSTRUCTION

J.S.B. BUSINESS FORMS

J.M. KEENAN

KREMLIN SPRAY PAINTING EQUIPMENT

MR. P. LAYCOCK

MARK JAMES SALVAGE

MILCUTT ENGINEERING

NBM CARPENTRY & BUILDING SERVICES

MR. N. OWEN

MR. J. PATTINSON

MR. M. PATTINSON

PAUL MOORE DECORATORS

F.W. PEARCE BUILDERS

MR. S. PEARSON

PREMIER BODYSHOP

DR. D.A. RUBIN

MR. D.C. RUTT

MRS. J. SHERIDAN

E.C.J. SHOREY TRAVEL

SPACE DISPLAY SYSTEMS

SWIFTS OF LUTON

TILDAE INVESTMENTS

TOOLING SERVICE

TWIGDEN HOMES

W.S. TYREMASTERS

VAUXHALL MOTORS

WILTON TRUCKS

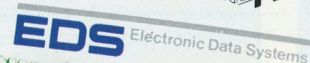
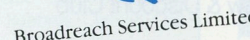
SOCCKERLINE

0839 664466

44p per min Peak

33p per min off Peak

EXECUTIVE BOX HOLDERS



J. SAPSWORTH LTD

GLAZING REPAIRS - GLASS SUPPLIES

DECORATING SPECIALISTS

92 MARSH ROAD, LUTON, BEDS.

GLAZING & 24 hr EMERGENCY SERVICE 0582 573025

DECORATING 0582 597505

FAX 0582 492025



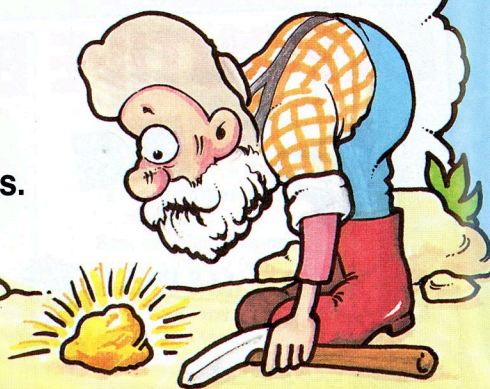
Strike Gold with Midas!

WIN £100 EVERY DAY, MONDAY TO FRIDAY IN AN EXCITING NEW DAILY DRAW

For only 50p a week you could cash in! – and this is not just a draw but also a discount club which, on production of your Midas membership card entitles you to super discounts from a wide variety of local retailers plus, every 26th week, *A CHANCE TO WIN A HOLIDAY FOR TWO TO THE DESTINATION OF YOUR CHOICE TO THE VALUE OF £500.*

All you need do to join is complete the form on this page and return it to us at the club and we will mail to your home your membership card and numbers in the draw. If you do not wish to spoil your programme, applications will be accepted on plain paper or you may wish to call at your newsagent to see if they are participating in the scheme. Results will be published weekly in the Luton News.

Join now and strike gold with Midas.



Return to Midas Club, Luton Town FC Promotions Dept., FREEPOST 965, 125 Oak Road, Luton.
I would like to become a member of The Midas Daily Draw & Discount Club

Name

Address

Tel No:

I would like to pay Quarterly/1/2 yearly/yearly.

Enclosed please find my first payment of £6.50/£13/£26 (delete as necessary)

Signed

I would also like details of becoming a lottery agent, earning commission and obtaining free match tickets Yes/No

HOW TO GET THERE

Wimbledon v Luton Town
Tuesday, January 1, 1991
Plough Lane
London SW19 8HG

Once in London, take the A205 to Wandsworth, then take the A217 towards Earlsfield into Garrett Lane. Turn right into Summerstown, leading into Plough Lane.

Street Parking is available.

Nearest Rail: Wimbledon Park (District Line).

HELLO TO EVERYONE AT STAMFORD BRIDGE

This afternoon we are delighted to welcome all the Chelsea fans at Stamford Bridge as readers of this match day programme. Chelsea are beaming the match back to London and selling our programmes to their supporters to help add to the atmosphere from Kenilworth Road where the teams are meeting in the final match of 1990.

There have been many memorable clashes between the two clubs over recent years and several have been played at this time of the year. No-one who was present at Kenilworth Road, for example, on January 1, 1980, can possibly have forgotten the 3-3 draw the two teams served up that morning.

If today's match produces half as much entertainment and if it does everyone will go home happy...from Kenilworth Road and Stamford Bridge, Happy New Year!

BOBBERS TRAVEL CLUB

Coach travel tickets, membership forms and price lists are available in the following ways:

1. After any home match from the entrance to the Bobbers Club in Oak Road (5 – 5.30am or 9.45 – 10.15pm).
2. By telephoning Paul Deason on Bedford (0234) 750996 (evenings only).

Fares for the trip to WIMBLEDON will also be £4.50 and £3.50 with coaches departing from Cranfield at 11am and from Luton at 12 noon.

THE GIANT NEW YEAR PROGRAMME FAIR

The annual buy, sell and swop extravaganza for Britain's football programme collectors takes place on Sunday, 6th January 1991, when THE GIANT NEW YEAR PROGRAMME FAIR is held at The Great Western Royal Hotel, Praed Street, Paddington, London W.2.

There will be thousands of football programmes on sale, from many of the country's leading dealers, ranging from valuable pre-war Cup Finals to modern bargains from just 10p each.

Although the past year has seen the football market gain 'respectability' from two highly successful auctions of memorabilia at Christie's antique programmes have not yet attracted the serious investor – the 'penny black' of programmes, the 1923 F.A. Cup Final, can still be bought for a couple of hundred pounds. Inflation has made its mark on modern issues however, for the Italian World Cup brochure costs a hefty £6.

The Fair also includes a fascinating exhibition of "Footballana", with medals, authentic shirts, and of course vintage programmes. The latter will include one of the oldest programmes in existence; a match card for Gentlemen v Players at The Oval at the dawn of professionalism, in 1886, together with the world's smallest programme, which measure just 4½ x 2½".

Admission to The Giant New Year Fair, which starts at 10.30 a.m. until 4.00 p.m. is just 50p.

THE GIANT NEW YEAR PROGRAMME FAIR
GREAT WESTERN ROYAL HOTEL, PRAED STREET, LONDON W.2.
(by Paddington Station) SUNDAY 6TH JANUARY 1991
10.30 a.m. – 4.00 p.m.

MORE ACTION FROM PALACE



• Sean Farrell bursts past Eric Young but cannot beat Nigel Martyn at Selhurst Park.

ATTENTION ALL LUTON TOWN MEMBERS !

Half Fare Scheme Available Every Saturday
From 25 August 1990 To May 1991.

- *Covers All Services Operated By Luton And District*
- *See The Town Play In London By Travelling on
The 757 Express Service To London (Half fare for members)*

THERE'S NO CHEAPER WAY TO TRAVEL TO SEE YOUR FAVOURITE TEAM IN ACTION

For further information telephone

**LUTON
& DISTRICT**

LUTON (0582) 404074

DUNSTABLE (0582) 472172

AYLESBURY (0296) 84919

RED ROVER (0296) 28686

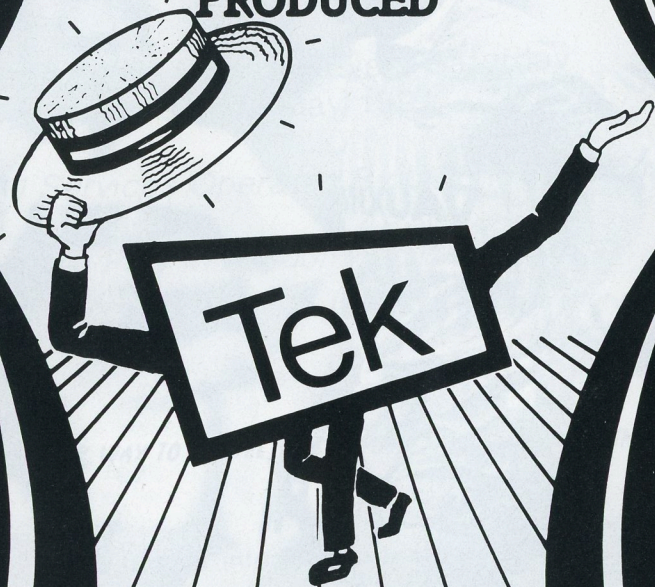
STEVENAGE (0438) 740979

HITCHIN (0462) 434132



• Kingsley Black, who has been in consistently good form this season, pictured in action at Loftus Road.

**DID YOU
KNOW THAT
LUTON
PRODUCED**



BRITAIN'S LEADING POWER TOOL SPECIALISTS

For a fully comprehensive stock of tools and accessories, expert advice, service and repairs, no one can beat Tek Power Tools for quality, professional attention and value for money.

**Why not take advantage of the fact that
your local power tool specialists are also
Britain's best?**

Tek Power Tools Ltd, Manor Road, Luton LU1 3HY
Telephone (0582) 417123 Telex 826109 Fax (0582) 454202

BOX OFFICE UPDATE

BARCLAYS LEAGUE DIVISION ONE

Wimbledon v Luton Town
Tuesday, January 1, 1991
Kick-off 3pm

Tickets for seats for this match will cost £8 and are available from the Ticket Office until December 31. Tickets for seats will be available on the day, subject to availability. Standing accommodation will be available on the day priced at £6.

F.A. Cup Third Round
Sheffield United v Luton Town
Saturday 5th January 1991 K.O. 3.00 p.m.
Match Ticket Arrangements

Seats are priced at £10.50 each, no concessions, and are available from the ticket office until Friday 4th January 1991 at 4.00 p.m. There will be no seats available to purchase on the day of the match. Standing is £6.00, no concessions, pay on the day at turnstile.

Luton Town v Southampton
Saturday, January 12, 1991
Kick-off 3pm

Tickets for this fixture will be on sale from Saturday, December 29 (after today's match). Normal league prices and guesting facilities and regulations will apply.

Possible Replay Arrangements
Luton Town v Sheffield United
Wednesday 9th January 1991, k.o. 7.45 p.m.
Match ticket arrangements would be:
SEASON TICKET HOLDERS priority purchase period

SUNDAY 6th January from 10.00 a.m. to 4.00 p.m.
Cup Voucher 22 applies
Telephone bookings on
Luton 411622 or Luton 30748 only

**WE WISH ALL
OUR
SUPPORTERS
A VERY HAPPY
NEW YEAR**

Possible Replay Arrangements
F.A. Cup Third Round
MEMBERS may purchase:

MONDAY 7th January from 10 a.m. to 7.00 p.m.
TUESDAY 8th January from 10 a.m. to 7.00 p.m.
WEDNESDAY 9th January from 10 a.m. to Kick-off

Telephone bookings on Luton 411622 or Luton 30748 only.
Normal league prices apply but please note the purchase of guesting tickets would cease at 4.00 p.m. on the day of the match.

Sheffield United supporters would be accommodated in the K1 section of Kenilworth Road Stand and must purchase their tickets from the ticket office at Sheffield United.

**CALL
SOCCERLINE
ON**

0839 664466

44p per min Peak
33p per min off Peak

*For all the latest news and
views from Luton Town*



by BILL TOMLINS

THE TOWN

TELE-BEAM SPECIAL TO BRING DOWN CURTAIN ON AN EVENTFUL YEAR

CHEERS, LARS!



● 1990 has been a good year for Lars Elstrup, seen here celebrating our win at Derby.

This afternoon, we welcome Chelsea to Kenilworth Road and also extend a special tele-beam welcome to their supporters watching the game via closed circuit television at Stamford Bridge. A very happy New Year to everyone in both grounds for the match!

Chelsea's idea of showing the match in this way shows very innovative thinking in these days of reduced capacities and all-seated stadia. Colin Hutchinson, the Chelsea managing director, has discussed the idea with us in detail over several weeks and hope it is a great success.

I think it is inevitable that we shall be seeing ground capacities reduced more and more all over the country and the Chelsea beam-back today to the diamond screens at the Bridge is one way of overcoming this problem and keeping their fans satisfied. They have also taken the steps to order from us a number of match programmes to sell at Stamford Bridge.

This afternoon's fixture is our last at home in 1990 and, by tradition, offers as a chance to look back over the old year and ahead to the new one. As you can

see, from the pictures on this page, it has been a tumultuous year of changes in fortune and person. el at Kenilworth Road.

The most notable events have been the changes in our team manager's position with Jim Ryan taking over in January to lead the club to First Division safety. This was achieved, of course, after he had gone to Liverpool for his first match in charge and then to Derby on the last day where the team achieved an unforgettable result, winning 3-2, on a day of high emotions.

Jim has continued the good work this season, at the time of writing, by establishing the team again in a good position and also by leading them to a great triumph in the Guinness Soccer Six at Manchester's G-Mex centre in December. That was a memorable night and one to celebrate.

Off the field, it has been busy too with changes in the boardroom producing three chairmen. The unsettled period has now been left well behind since Peter Nelkin took over with David Kohler also joining the board and we all look forward to a successful, happy and exciting 1991.

● Look at that! Jason Rees is in celebratory mood as Graham Rodger, chief scout Ron Howard and Kurt Nogan join in the fun after our great win at Derby last May.



● How it started for Jim: A stern look for a stern test at Liverpool.



● Escape artistry at its best as Kingsley Black hammers in his decisive goal at the Baseball Ground.



● Pure genius in Soccer Six as Sean Farrell shot to stardom on the way to the Town's tournament triumph.

CAPTAIN'S DIARY



JOHN DREYER

Happy New Year

First of all, I would like to wish everyone here today a very happy and successful New Year in 1991. We are certainly looking forward to making a much better finish to the league than we did last season!

The lads are playing with much more confidence now and we are all enjoying our football. That has been perhaps the biggest change in 1990 under Jim Ryan. The team spirit has always been excellent.

Thank you

We were a bit disappointed not to get a better result at Crystal Palace just before Christmas and, unfortunately, I had to complete these notes before we met West Ham in the Zenith Data Systems Cup. Suffice to say, we were all hoping to enjoy a victory that night.

I am sure the New Year is going to be a tough and exciting one for us in the First Division. On behalf of all the lads in the dressing room, I would like to thank everyone for their support in 1990 - and hope it continues in 1991.

FIRST TEAM ACTION

Luton Town 1 Arsenal 1

The controversy which surrounded Arsenal captain Tony Adams' dismissal after conceding a late penalty, from which John Dreyer equalised, unfortunately overshadowed a very good match at Kenilworth Road on December 8.

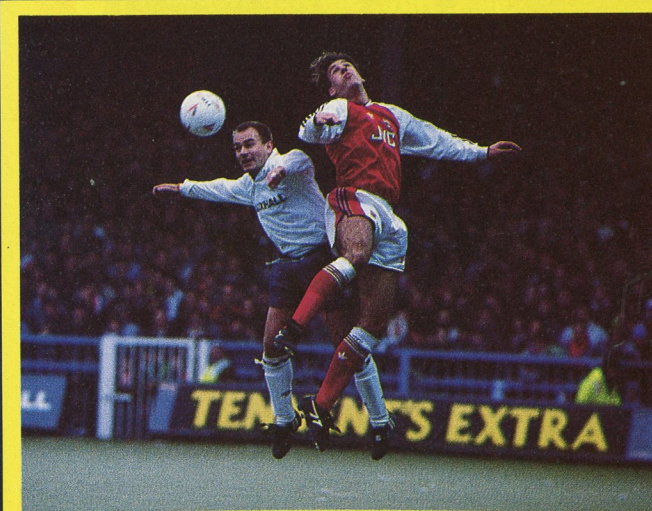
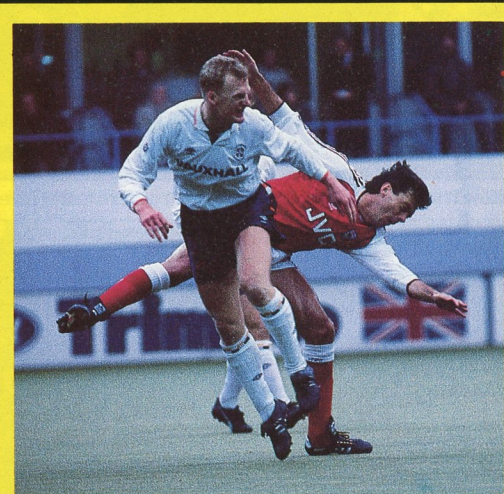
Adams was sent off after bringing down Iain Dowie, as he ran on to an astute through pass by substitute Sean Farrell, late in the second half, Dreyer scored with a well-struck shot high to David Seaman's right.

Earlier, Alan Smith had headed Arsenal into the lead during a spell of pressure in the first half from the unbeaten Londoners. The Town had opportunities to level, most notably when Dowie hit the bar with a powerful header, and a goal disallowed and well deserved their point at the end.

Luton Town: Chamberlain, Johnson, Harvey, Williams, McDonough, Dreyer, Elstrup, Preece, Dowie, Rees (Farrell), Black.

Arsenal: Seaman, Dixon, Winterburn, Thomas, Bould, Adams, O'Leary, Davis, Smith, Merson, Limpar.

Referee: P. Don (Hanworth Park, Middlesex).



• Point proven: John Dreyer's penalty secured a deserved point against Arsenal. Iain Dowie, David Preece and Kingsley Black are pictured in action. Pictures by Josh Levy of Apex Photography.



828 AM
Chiltern Radio

SUPERGOLD

*for the Greatest Hits of All Time
and Unrivalled Daily Sports News!*

SUPERGOLD 828 AM
in Herts. Beds & Bucks



High Power Pressure Washers:
Sales, Hire, Service Repairs,
Spares, Maintenance Contracts.

SPECIALISTS IN SALES & SERVICING OF
PRESSURE WASHERS
(Most makes repaired)

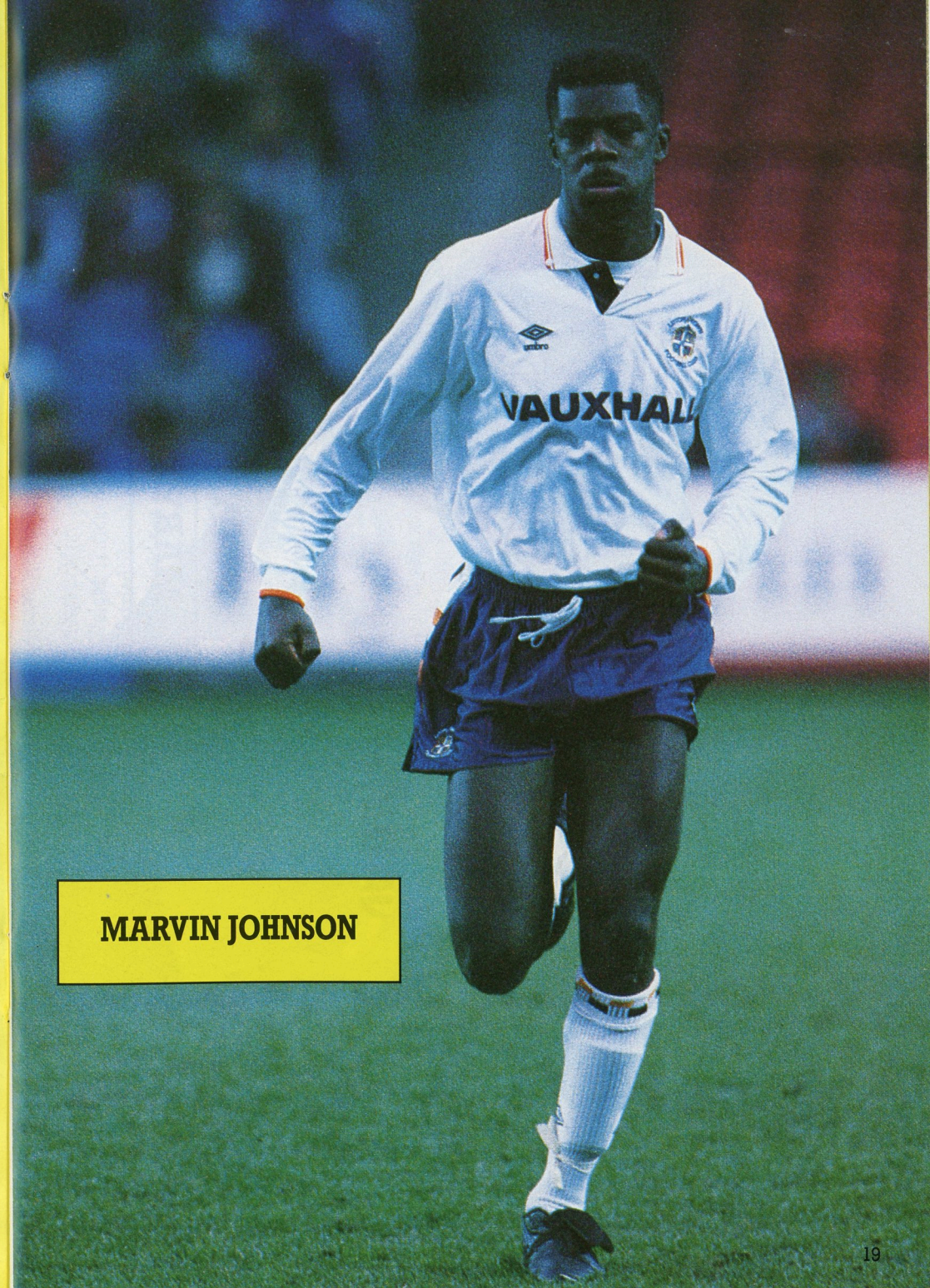
Main distributor for 'Warwick'



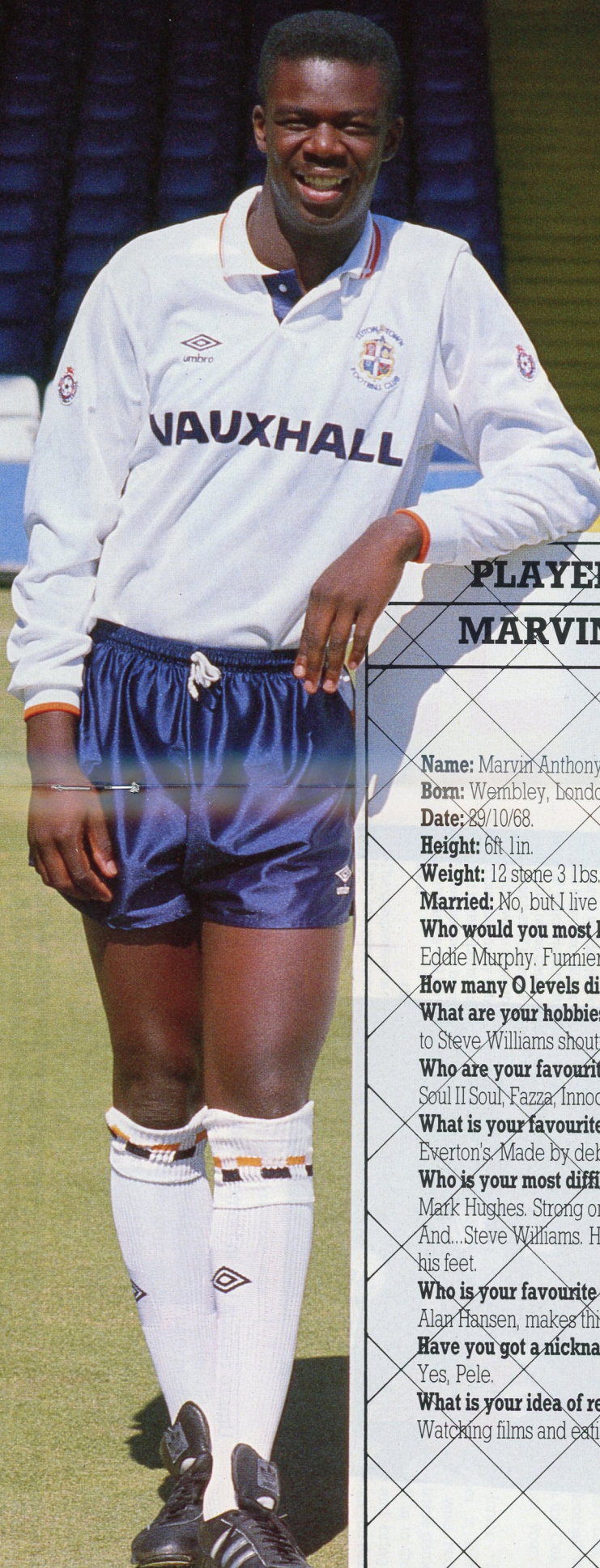
JR Power Cleaning

11 Sunbeam Rd., Woburn Rd. Ind. Est., Kempston,
Bedford MK42 7BZ. Fax: (0234) 840110

0234 840838



MARVIN JOHNSON



PLAYER PROFILE MARVIN JOHNSON

Name: Marvin Anthony Johnson

Born: Wembley, London.

Date: 29/10/68.

Height: 6ft 1in.

Weight: 12 stone 3 lbs.

Married: No, but I live with my girlfriend Sue.

Who would you most like to meet and why?:

Eddie Murphy. Funnier than me.

How many O levels did you get?: Pass!

What are your hobbies?: Golf, tennis and listening to Steve Williams shouting on the pitch.

Who are your favourite pop stars?:

Soul II Soul, Fazza, Innocence and Luther Vandross.

What is your favourite ground and why?:

Everton's. Made my debut there (Simod Cup).

Who is your most difficult opponent and why?:

Mark Hughes. Strong on the ball and a good touch. And...Steve Williams. His mouth works faster than his feet.

Who is your favourite other player and why?:

Alan Hansen, makes things look simple.

Have you got a nickname at Luton?:

Yes, Pele.

What is your idea of relaxation?:

Watching films and eating out

LUTON TOWN SPORTS SHOP FOR ALL THE FAMILY



Umbro replica kits in Home, Away, or Orange
Stylish ladies and gents shell tracksuits
Childrens tracksuits and shell tracksuits
Shell tracksuit tops and shell pants in all sizes
Rugby shirts, Leisure shirts, long or short sleeves
Childrens slippers, Wall clock and Alarm clock
Ski and Bobble hats, Bath towel, Key rings, Coffee mugs
Soft cuddly toys. Luton Town Official Handbook

**SEE OUR SELECTION ON DISPLAY IN THE SHOP AT THE TOP OF
OAK ROAD OR TAKE ADVANTAGE OF OUR NEW MAIL ORDER
FACILITY**

TEL (0582) 411622
ACCESS AND VISA WELCOME

SOCCKERLINE 0839 664466 44p per min Peak
33p per min off Peak



BARCLAYS

Junior Hatters



**With
JASON
REES**

- Today we give Chelsea a warm welcome to Kenilworth Road.
- We also welcome the 'Junior Blues' who are watching today's game from our Oak Road family enclosure.
- They are here at the invitation of our Junior Hatters. They have been playing football against each other this morning. I hope that you all had a good time.
- Today I will let you know about the competition we are running in the New Year. At each home game we are running a competition for all Junior Hatters. It will be in conjunction with Barclays Bank.
- At each home game we will print two of three questions and show the number of points for each correct answer.
- Simply write down the answers on a piece of paper or post card and put your entry in the post box in the Oak Road Sports Shop, or post it to the Sports Shop 125 Oak Road, Luton LU4 8AA.
- All entries must be in by the date printed.
- The winners will be those with the most points at the end of the season.

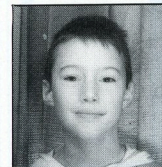
COMPETITION RULES:-

1. The competition is open only to Junior Hatters members.
2. Only one entry per match per member.
3. All entrants agree to take part in any publicity organised in connection with the competition.

First Prize - to the value of £75.00
Second Prize - to the value of £35.00
Third Prize - to the value of £15.00

- Come on you Junior Hatters lets make this competition work really well.

MASCOT



Adam Tiley

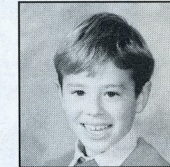
ESCORTS



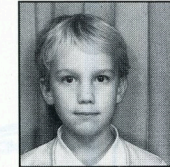
Natalie Pengelly



Michael Sheard



Richard Moore



Ian Lowther

BARCLAYS JUNIOR HATTERS COMPETITION ANSWERS TO MATCH NO.11

POINTS

A1 Le Harve A2 Hendon

QUESTIONS FOR MATCH NO.12

Q1 Name the club that David Beaumont played for before he came to Luton? 3

Q2 Name the club that Lars Elstrup played for before he came to Luton? 4

Return date Monday, 7th January, 1991.

Name Address

Tel D.O.B MEM. NO.

Answers Match 12: 1) 2)

Please return slip to Barclays Bank Plc, 28 George Street, Luton, Beds. All slips to be returned to the Bank by Monday, 7th January, 1991.



BY WENDY GRZYGOWSKA

THANK YOU TO ALL OUR SPONSORS AT THE END OF ANOTHER EXCITING YEAR

MAGIC MEMORY



- Alec Chamberlain's face tells its own story at the highlight of our year – the win at Derby which kept us in the First Division.

Welcome to our match sponsors today Luton International Airport. The airport have taken this opportunity to thank their staff for all their support during 1990 by inviting them to join us all here for the excitement of this afternoon's clash with Chelsea.

A prize draw was held at the airport shortly before Christmas and the winners are here today to join in the fun as we take on Chelsea in what should be a memorable match.

Congratulations to all the winners – I hope everyone enjoys their afternoon with us.

A big welcome to Keith Harvey and his son Richard who are our match ball sponsors today. Keith's business, R.W. Harvey & Son, is a

road haulage company with 25 vehicles and various trailers which operates from their base at Sandy, Bedfordshire.

Both are avid Town fans and we hope they enjoy their day, enjoy the result and have a very successful new year in 1991 when we shall all be looking for a big improvement in the general economic climate. Failing that, a good result always helps!

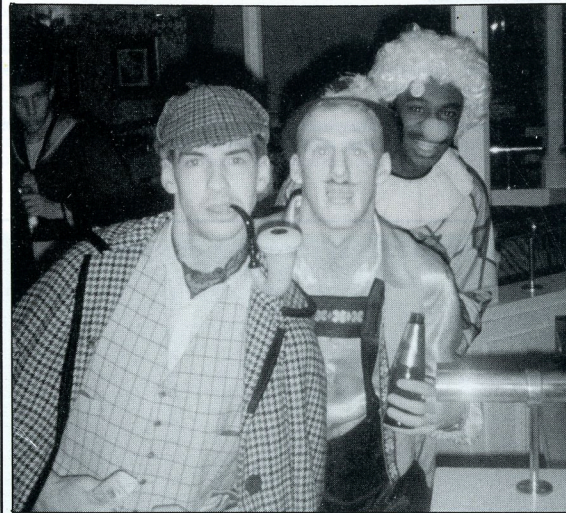
As this is our last home fixture in 1990, may I take this opportunity to thank everyone for their support throughout the year and, on behalf of everyone involved with the Commercial Department at the club, wish all our supporters a very happy and prosperous New Year.

A SPECIAL THANK YOU TO VAUXHALL



- Town director David Kohler hands over a souvenir cut glass ball to Vauxhall's Peter Batchelor to mark their sponsorship of the Arsenal match.

WELL, WHAT NEXT, SHERLOCK?



- Fancy that: Alec Chamberlain and Iain Dowie lead the revelry at our players' own Christmas party – a truly fancy dress event.

WE WISH ALL OUR SUPPORTERS A VERY HAPPY AND SUCCESSFUL NEW YEAR IN 1991

Today's MATCH SPONSOR

CHOOSING THE BEST AIRPORT TO FLY FROM IS ALWAYS A CLOSE THING

Less than 45 minutes up the M1 from Central London, Luton is strategically situated to offer the most convenient airport around. Complementing a well established range of holiday routes, our fast growing programme of scheduled flights to domestic and international

centres gives businessman and holiday-maker alike an enviable choice of destinations. Luton Airport operates scheduled flights to and from ten destinations in Ireland, for example, and increased frequency to Amsterdam opens up easy interlining access worldwide.

LUTON
international
AIRPORT

Close to you





George Ley John Moore

MATCH DIGEST

Fixture: Wimbledon

Venue: Wimbledon Date: 8.12.90

Competition: South East Counties League

Result: 0-6

Team: Staniloff, Holtham, Lawford, Rogers, Green, Brittain, Thompson, Rutherford, Newman, Campbell, Sutton.

Subs: Elliot Murry.

Coach's comment: We gave away a silly goal from our own goal kick to give Wimbledon a great start that they didn't really need. The 6-0 score speaks for itself.

OVENDEN PAPERS FOOTBALL COMBINATION
SEASON 1990-91

	P	W	D	L	F	A	Pts
Tottenham Hotspur	18	14	0	4	44	22	42
Wimbledon	18	12	3	3	30	14	39
Chelsea	16	10	0	6	32	19	30
Luton Town	18	9	3	6	36	27	30
Millwall	17	7	6	4	42	23	27
Norwich City	17	7	6	4	29	20	27
Arsenal	16	8	3	5	27	20	27
Portsmouth	17	7	6	4	26	19	27
Southampton	18	7	4	7	26	34	25
Crystal Palace	15	6	5	4	29	20	23
Swindon Town	18	6	5	7	31	30	23
Charlton Athletic	17	6	4	7	25	25	22
QPR	18	5	6	7	28	32	21
West Ham	16	6	1	9	19	33	19
Brighton & Hove Albion	16	5	3	8	21	29	18
Ipswich Town	18	4	5	9	20	29	17
Oxford United	15	4	3	8	22	25	15
Watford	15	4	3	8	17	35	15
Fulham	17	4	3	10	19	38	15
Reading	20	3	3	14	14	43	12

up to and including 15.12.90

OVENDEN PAPERS FOOTBALL
COMBINATION

Date	Opponents	Result
1990/91		F-A
Aug 29	Fulham	3-0
Sept 1	Southampton	3-2
Sept 11	Chelsea	3-5
Sept 15	Watford	4-2
Sept 25	Charlton Athletic	3-3
Sept 29	West Ham United	1-0
Oct 3	Leighton (BPC1)	3-1
Oct 6	Wimbledon	0-1
Oct 10	Brighton & Hove Albion	1-2
Oct 13	Reading	3-0
Oct 20	Chelsea	1-2
Oct 27	Portsmouth	2-1
Nov 3	Crystal Palace	0-0
Nov 10	Millwall	1-5
Nov 20	QPR	2-2
Nov 28	Swindon Town	4-0
Dec 1	Oxford United	2-0
Dec 4	Dunstable (BPC2)	1-2
Dec 12	Reading	3-1
Dec 15	Wimbledon	0-1
Dec 22	Charlton Athletic	
Jan 5	Tottenham Hotspur	
1991		
Jan 18	Norwich City	
Jan 22	Portsmouth	
Jan 26	QPR	
Feb 6	Oxford United	
Feb 9	Arsenal	
Feb 16	Fulham	
Feb 23	Tottenham Hotspur	
Mar 5	Watford	
Mar 9	Swindon Town	
Mar 20	Crystal Palace	
Mar 23	Ipswich Town	
Mar 30	Southampton	
Apr 8	Millwall	
Apr 16	Norwich	
Apr 20	Ipswich Town	
Apr 23	Arsenal	
May 2	West Ham United	
May 4	Brighton & Hove Albion	

BPC-Bedfordshire Premier Cup

RESERVES - APPEARANCES & GOALSCORERS

Football Combination							
	Apps	Gls		Apps	Gls		
ALLPRESS	12(1)	-	MCGONAGLE	8(2)	4		
ARMSTRONG	1	-	NOGAN	6	4		
BEAUMONT	2	-	PEMURIDGE	17	4		
BROWN	5(2)	2	PETTERSON	15	-		
COOKE	13(1)	1	REES	4	1		
CRAWSHAW	6(4)	1	RICHARDS	5(8)	-		
FARRELL	7(2)	6	RODGER	4	1		
GILLARD	13(2)	-	SALTON	12	-		
GRAY	11(3)	6	SCOTT	9(4)	1		
HARVEY	1	-	SHANLEY	5(1)	1		
JACKSON	9(4)	-	TELFER	8(2)	3		
JAMES	4	-	TIGHE	3	-		
JOHNSON	6	-	TIKVA	3	-		
MCDONOUGH	3	-	WATKISS	3	-		
			WILLIAMS	5	-		

Bedfordshire Premier Cup: Appearances - Allpress 1(1), Brown 1, Campbell 1, Cooper -(1), Crawshaw -(1), Farrell 1, Gillard 2, Gray 1, Jackson 1, James 1, McGonagle 2, Nogan 1, Pembbridge 1(1), Petterson 1, Richards 2, Scott 2, Shanley 2, Teller 1, Watkiss 1. Goals - Brown 1, Farrell 1, James 1, Nogan 1.

MATCH DIGEST

Fixture: Reading

Venue: Reading Date: 12.12.90

Competition: Ovenden Papers Football Combination

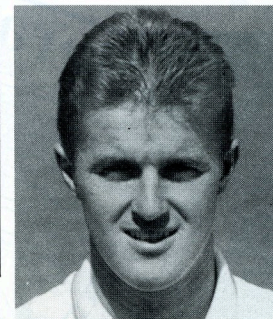
Result: 1-3 Half-time: 0-2 Scorers: Gray, Pembbridge, Roger.

Team: Petterson, James, Gillard, Richards, Rodger, Beaumont, Cooke, Gray, Farrell, Tighe, Pembbridge. Subs: Scott Crawshaw.

Coach's comment: Made hard work of it by conceding a goal from a set peice. Overall we found it hard to get our passing going on a bumpy pitch. With more thought and care and sharpness in front of goal, we could have run out easy winners. Played the game at half pace, instead of keeping the tempo up and making our superior skill tell.

SOUTH EAST COUNTIES LEAGUE
Division 2

	P	W	D	L	F	A	Pts
Wimbledon	10	9	1	-	29	8	19
Bristol Rovers	11	6	3	2	30	14	15
Oxford United	9	7	-	2	25	15	14
Aldershot	10	5	2	3	20	21	12
A.F.C. Bournemouth	10	5	1	4	23	22	11
Southampton	10	5	1	4	21	15	11
Tottenham Hotspur	12	3	4	5	23	23	10
Swindon	11	4	2	5	19	30	10
Crystal Palace	10	3	3	4	24	23	9
Brighton & Hove Albion	11	2	5	4	16	18	9
Reading	11	3	3	5	20	28	9
Colchester United	7	4	-	3	12	10	8
Bristol City	10	2	3	5	24	28	7
Luton Town	11	2	2	7	20	26	6
Brentford	9	2	2	5	16	22	6
Maidstone	10	3	-	7	9	28	6



Paul Gray.

SOUTH EAST COUNTIES LEAGUE
Division Two

Date	Opponents	Result
1990/91		F-A
Aug 25	Bristol City	1-2
Sept 1	Maidstone United	5-0
Sept 8	Swindon Town	2-3
Sept 10	Birmingham(SJFC)	0-2
Sept 15	Oxford United (LC1)	1-3
Sept 22	Bournemouth	4-2
Sept 29	Aldershot	0-3
Oct 6	Oxford United	2-5
Oct 13	Brentford	2-3
Oct 20	Brighton	0-0
Oct 27	Crystal Palace	1-3
Nov 3	Tottenham Hotspur	4-2
Nov 10	Reading	1-1
Nov 17	Colchester	6-2
Nov 24	Bristol Rovers	2-1
Nov 27	Watford (FAYC2)	0-1
Dec 1	Southampton	1-2
Dec 8	Wimbledon	0-6
Dec 15	Southampton	3-2
Dec 22	Brighton	
1991		
Jan 5	Bristol City	
Jan 12	Maidstone United	
Jan 19	Swindon Town	
Jan 26	Bournemouth	
Feb 2	Aldershot	
Feb 9	Oxford United	
Feb 16	Brentford	
Feb 23	Crystal Palace	
Mar 2	Tottenham Hotspur	
Mar 9	Reading	
Mar 16	Colchester	
Mar 23	Bristol Rovers	
Apr 6	Wimbledon	

LC-League Cup

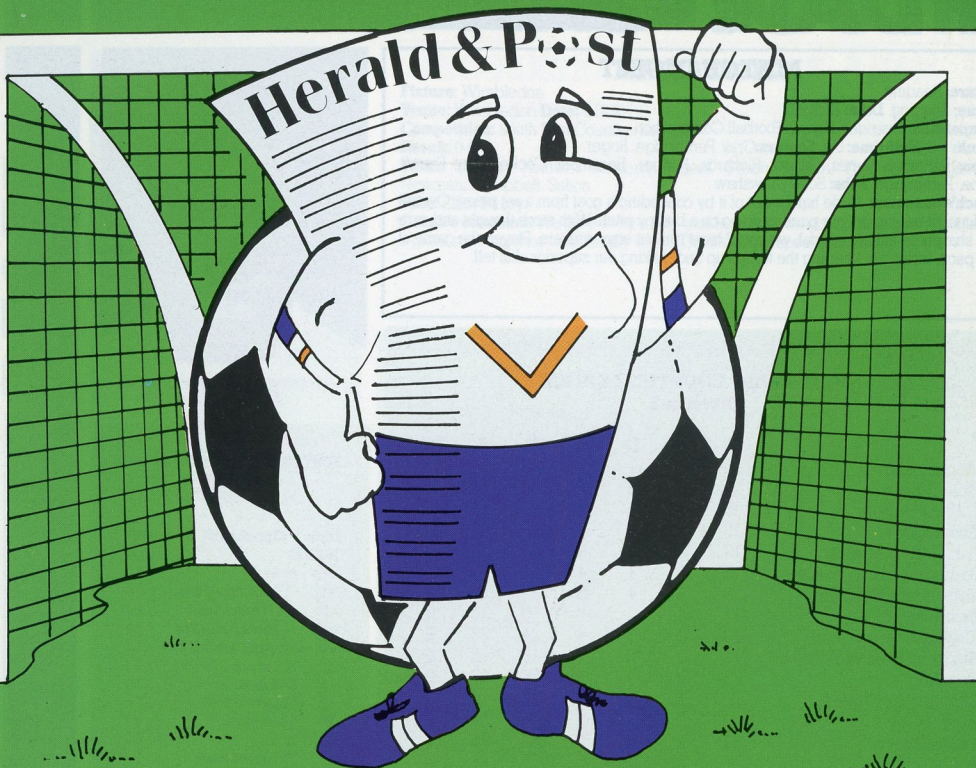
SJFC-Southern Junior Floodlit Cup

FAYC-FA Youth Cup

YOUTH TEAM - APPEARANCES & GOALSCORERS

SEC League		S.J.F.C		SEC League Cup		F.A. Youth Cup	
Apps	Gls	Apps	Gls	Apps	Gls	Apps	Gls
BRITAIN	8	-	1	-	-	-	-
CAMPBELL	16	3	1	-	1	-	-
CAREY	-(1)	-	-	-	-	-	-
COOPER	13	5	1	-	1	-	-
DIBLEY	1(1)	-	-(1)	-	-	-	-
ELLIOTT	9(6)	-	-(1)	-	1	-	-
GREEN	9	-	-	-	-	-	-
GORMLEY	12	3	1	-	1	-	-
HANCOCK	12	-	1	-	1	-	-
HOLTAM	11(1)	1	1	-	-	-	-
LAWFORD	14(2)	5	1	-	1	-	-(1)
MCDOWELL	-(1)	1	-	-	-	-	-
MOORE	-(1)	-	-	-	-	-	-
MURRAY	5(6)	-	1	-	-(1)	-	-
NEWMAN	8(5)	2	-	-	-(1)	-	-
NOLAN	4	-	-	-	-	-	-
ODONNELL	2	-	-	-	-	1	-
PHILPS	3	-	-	-	1	-	-
ROGERS	9	1	-	-	-	1	-
RUTHERFORD	13(3)	3	-	-	1	-	-
STANDALOFF	4	-	-	-	-	-	-
SUTTON	12(1)	3	1	-	1	-	-
THOMPSON	16	3	1	-	1	-	-

JOIN THE WINNING TEAM



Herald & Post Line-up

**READ THE NEWS AND VIEWS EACH WEEK IN
ALL OF THE EDITIONS**

**The Best for News and Sport Tel: LUTON 38981
The Best for Advertising Tel: LUTON 401234**

Britain's Free Newspaper

THE Herald & Post



• You cannot see him, but a well-known Town player is pictured heading Luton's opening goal at Kenilworth Road 10 years ago. Who is the hidden Luton star? Answer on page 37.

And coming here next...

SOUTHAMPTON

...Saturday, January 12, 1991, kick-off 3 p.m.



Currently struggling in the lower reaches of Division One this season, Southampton are the next visitors to Kenilworth Road, for our first game of the new year on January 12.

Southampton have not made the start many people had expected this season. But there is such a good balance of youthful skill and experience in the side that it seems inevitable that their fortunes will change.

The Saints' side is much the same as last season's exciting line-up. This inevitably means the inclusion of such players as England B internationals Matthew Le Tissier and Rodney Wallace, Soviet international Alexander Cherednik and the experienced professionals Jimmy Case and Glen Cockerill. Their only addition to the side has been that of Republic of Ireland international Alan McLoughlin, signed from Swindon for a club record of £1 million last month.

Although on outstanding defender in his playing days, manager Chris Nicholl has always encouraged positive, attacking play. So come to Kenilworth Road on January 12th to see if the Town can achieve a 'double' over the Saints following our 2-1 win at the Dell last September.

OUR TEAM ALSO
COVERS BUSINESS
EVERYWHERE.

*** YOU'RE
BETTER OFF
TALKING TO
BARCLAYS

*We know it's teamwork that counts, so come
down to see our squad for the back-up your business needs.*

■ TAKE YOUR PIC! ■



• **Remember the old days:** Mal Donaghy (top) rises to head clear at Stamford Bridge in 1981 while Brian Stein (below) eludes the Blues defence a few years later.



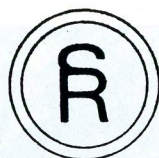
Already, CCTV has had a major impact on the hooligan problem inside football grounds as well as proving extremely useful to monitor safety measures. If any trouble appears on the screen or is reported from any quarter of the ground, the CCTV can zoom in on the incident. The police can then record what occurs on colour video and on hard copy prints. Individuals can be picked out by facial appearance and the colour of their clothing. The evidential effect of such a video recording has proved formidable. It has persuaded hooligans, who would previously have sought to challenge oral evidence of identification, to plead guilty. Hooligans know cameras are keeping a roving watch and their activities in the ground are inhibited by that knowledge."

Lord Justice Taylor in his Final Report into the Hillsborough Stadium Disaster.

All major League grounds in Britain are equipped with CCTV funded by The Football Trust.

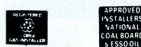


THE FOOTBALL TRUST
Helping the game



**SUN REALM
HEATING CO. LTD.**
**HEATING & PLUMBING SPECIALISTS
DOMESTIC INDUSTRIAL & COMMERCIAL**

MEMBERS OF
I.D.H.E.
**APPROVED OIL
INSTALLERS**
APPROVED INSTALLERS TO
EASTERN ELECTRICITY



ALL WORK GUARANTEED - FREE QUOTATIONS - EXCELLENT AFTER-SALES SERVICE - PROMPT ATTENTION

LUTON (0582) 571925

28 CAMFORD WAY, LUTON

WELCOME TO...

CHELSEA



Back Row (l to r) **Damian Matthew, Graham Stuart, Gareth Hall, Erland Johnsen, Erry Dixon, Andy Townsend, Steve Clarke, Graeme Le Saux, Kevin McAllister.** Middle Row (l to r) **Frank Sibley (Reserve Team Coach), Bod Ward (Physiotherapist), Jason Cundy, David Lee, Roger Freestone, Dave Beasant, Kevin Hitchcock, Kenneth Monkou, Alan Dickens, Gwyn Williams (Assistant Manager), Dave Collyer (Youth Team Coach).** Front Row (l to r) **John Bumstead, Dennis Wise, Peter Nicholas, Bobby Campbell (Manager), Gordon Durie, Tony Dorigo, Kevin Wilson.**

This afternoon we welcome the playing staff and officials of Chelsea to Kenilworth Road for today's Barclays League Division One match, *writes Luke Nicoli.*

Chelsea came into the new season aiming to live up to the expectations placed upon them as potential First Division champions. As the Blues' went into November however, it was clear that the 'favourites' tag was far from becoming realised. Although manager Bobby Campbell had persuaded Norwich City to part with Andy Townsend for £1 million and signed Dennis Wise from Wimbledon for £1.5 million, the side were not playing well, only three League wins from thirteen matches saw them placed fifteenth in Division One.

Their fortunes have seemed to have changed during the last two months. The introduction of youngsters such as Graham Stuart, David and Jason Cundy to the side has seen Chelsea win four consecutive matches, including victories against Man United, Tottenham and Crystal Palace. At the time of writing they currently lie ninth in the League.

Chelsea F.C. were formed in 1905 by local entrepreneur Gus Mears. He set up his own team

after Fulham rejected the chance to play at the newly developed Stamford Bridge. Although they had no players during their first months of existence, they had a very determined board of directors. After making some impressive signings, the new club played their first League match v Hull City in Division Two, in September 1905.

Chelsea's colourful history has seen them lift the First Division championship on only one occasion in 1954/55. They also won the FA Cup in 1970, the League Cup in 1965, the European Cup Winner's Cup in 1971 and have won the Full Members/ZDS Cup in 1986 and 1990. Manager Bobby Campbell is the club's twelfth post - war manager which includes such famous footballing names as Ted Drake, Tommy Docherty, Dave Sexton and Geoff Hurst.

The Blues were in action in a London derby match at Stamford Bridge against Crystal Palace early in December. Graham Stuart scored his first goal for the club and helped secure a 2-1 victory over the Eagles. A prosperous crowd of 21,558 saw Chelsea re-ignite their season with manager Campbell enthusing that they can still mount a serious championship challenge.

OFF THE RECORD

FEATURING....IORWERTH HUGHES

(Continued from December 26).

"I did not like it at Cardiff and after losing my place through injury after half a season I could not wait to get away. Whereas at Luton I was well looked after, Cardiff made promises, such as finding me a house, which they never kept.

"They insisted on retaining my registration so the only thing open to me was to go non-league and I had an enjoyable season with Worcester City effectively on loan."

It is interesting to note that, whereas in those days of the maximum wage £7 a week was all that could be offered by both Luton and Cardiff, £14 was paid by Worcester as well as an arranged job in a factory.

Gradually League teams came sniffing around again and as Iorwerth was still ambitious and indeed had won four full caps for Wales only two seasons before it was agreed that he should join Newport where he enjoyed five seasons.

Strong feelings for the club

"My wife came from Luton and when the chance came to buy a house in Chatsworth Road, Newport agreed to release me from my contract so I could come back to this area.

I had one further season of football playing for Hastings before packing up after breaking an arm at Kings Lynn."

IT HAPPENED.....

FIVE YEARS AGO (28/12/85) After going down to a soft early goal to Ipswich at Portman Road the town fought back to gain a late, but deserved, equaliser through Marc North.

TEN YEARS AGO (27/12/80) A hat-trick from Brian Stein paved the way to a fine 4-2 win at Bristol Rovers. This was the Towns fourth straight win.

FIFTEEN YEARS AGO (27/12/75) Another win at Eastville, this time 1-0 courtesy of a goal from Andy King. The victory pushed the Town up to sixth in Division Two.

TWENTY YEARS AGO (27/12/70) After the postponement of the home fixture against Millwall on Boxing Day the Town players were left kicking their heels with no further games to be played until the F.A. Cup 3rd Round tie at Nottingham Forest on 2nd January.

LAST FIVE MEETINGS AT KENILWORTH ROAD

1989/90	30/12/89	Luton 0 Chelsea 3
		Att: 10,068
1987/88	1/1/88	Luton 3 (Stein M, Stein B, Harford)
		Chelsea 0
		Att: 8,018
1986/87	3/1/87	Luton 1 (Newell) Chelsea 0
		Att: 10,556
1985/86	7/9/85	Luton 1 (Harford) Chelsea 1
		Att: 10,720
1984/85	22/9/84	Luton 0 Chelsea 0
		Att: 16,066

* Roger Wash is our official club statistician.

Anyone with inquiries or comments please write to him
c/o The Editor, Luton Town F.C., Kenilworth Road Stadium,
1, Maple Road, Luton LU4 8AW.

When speaking to Iorwerth it was obvious that he had a strong feeling for Luton Town and the connections with the club kept on cropping up throughout his career. Percy James, an ex Luton player, was manager at Worcester and, in fact, Iorwerth was the replacement for Ron Baynham who had joined Luton from the Southern League club. Also Tim Kelly, father of Terry, was the manager of Hastings whilst he was there.

"My time at Luton was the most enjoyable of my career, not least because I won my four Welsh Caps whilst at the club including one against England who included such players as Jackie Milburn and Tom Finney.

"We had some great players at the club including Bud Aherne, a good distributor of the ball, Syd Owen, who was always in total command and George Stobart a cool goalscorer who later when playing for Brentford knocked all my teeth out with his elbow. No protection for goalkeepers in those days.

"There seemed to be more characters around then and I well remember the Luton comedian Alec Glover on being presented with a box of fresh fish after a game at Hull proceeding to eat them raw on the way home. He was always hungry and would often say that he could eat a buttered lavatory seat."

Roger Wash



• Iorwerth Hughes gathers, protected by Billy Cooke.

Luton News

TOWN & COUNTRY • Mid and South Beds

DUNSTABLE GAZETTE

1st AND BEST!

All the LUTON
TOWN NEWS from
BRIAN SWAIN

The 'Man in the know'



WEDNESDAYS 14p



Simply The Best!

◆ SATURDAY SPORTSOUND 2-6PM ◆
 ◆ DAILY SPORTS DESKS ◆
 ◆ MID-WEEK MATCH COVERAGE ◆

103.8FM & 630kHz AM
 S T E R E O

ROADS

BUILDINGS

ASPHALT

Attention to detail, quality and personal contact are still our biggest advantages.

FITZPATRICK

A CONCERN FOR CONSTRUCTION

FITZPATRICK CONTRACTORS LTD

Hertford Road

Hoddesdon, Herts EN11 9BX

Tel. No. 0992 445757 Fax. No. 0992 446882 Tlx. No. 8954170

FOR THE RECORD

This afternoon we take a close look at some previous post-war festive season fixtures between the Hatters and the Blues:

Dec 26, 1962: One to forget for Town supporters as the Blues came to Kenilworth Road and won 2-0 in a Boxing Day fixture. The Town were on their way to the Third Division and Chelsea completed a double with a 3-1 win on April Fools' Day.

Jan 11, 1975: With both clubs back in the First Division, there was a good crowd to see a relegation-haunted Town fight to a 1-1 home draw with Chelsea, thanks to a goal from Jimmy Husband. It was the first fixture of the year for Luton owing to bad weather.

Dec 29, 1976: Goals from Lil Fuccillo, Brian Chambers, Jimmy Husband and a Steve Buckley penalty – and couldn't he strike a ball powerfully? – carried the Town to a convincing 4-0 win on a frozen surface.

January 1, 1980: The one we all remember...An end-to-end thriller, ending 3-3, on another frozen surface in a match with a morning kick-off. It could have been 6-6 and Geoff Hurst, the Chelsea boss, admitted as much afterwards. Town goals from Mal Donaghy, Mike Saxby and David Moss.

December 26, 1980: Brian Stein hit the net twice in this Boxing Day clash and the Town cruised to a reasonably comfortable 2-0 win. Brian clearly had a liking for the Chelsea defence as he scored some very fine goals against the Blues over the years and often performed particularly well at Stamford Bridge.

HIDDEN SCORER

• The man out of sight behind the Chelsea goalkeeper was none other than Brian Stein.

FOCUS ON CHELSEA

Dave Beasant (goalkeeper): Willesden-born, Dave is remembered for his many years in goal for Wimbledon. He made over 330 League appearances for the Dons before joining Newcastle United for £800,000 in 1988. He joined Chelsea midway through the 1988/89 season after making only 20 League appearances for Newcastle.

Gareth Hall (defender): Now established as a first team regular at Stamford Bridge, Gareth made his League debut for the Blues in a 2-1 defeat by Wimbledon in 1987. He has been a regular member of the full Wales squad for three years and now has seven caps.

Graham Le Saux (defender): Graham joined Chelsea as a trainee and is seen by many as a great prospect for the Blues. He has been a squad member for the past two seasons, making his debut v Portsmouth in 1989 and will be hoping to gain a regular first team spot this season.

Kenneth Monkou (defender): Former Dutch Under-21 international, Kenneth has been one of Chelsea's outstanding performers so far this season. He made his debut v Stoke City in March 1989 shortly after joining Chelsea from Feyenoord for £100,000.

Jason Cundy (defender): Another product of Chelsea's successful youth team policy, Wimbledon born Jason broke into the first team this season making his debut in a 1-0 defeat by QPR.

David Lee (defender): David has been vying with Jason Cundy for a first team spot during the past couple of months. He joined Chelsea as a trainee and got his chance in their League eleven in a 2-1 win over Leicester City in 1988 and has made over 50 appearances for the Blues.

Andy Townsend (midfield): Signed from Norwich for £1 million last Summer, Andy was playing non-league football for Weymouth only six years ago. Southampton signed him for £35,000 in January 1985 and he quickly established himself in the First Division before signing for Norwich in 1988. Andy is an Eire international.

John Bumstead (midfield): John is Chelsea's longest serving player. He completed his apprenticeship at Stamford Bridge before making his League debut in a 2-1 defeat at Leeds United in 1978.

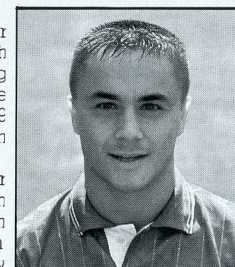
Graham Stuart (midfield): Yet another member of Chelsea's successful youth team policy, Graham was introduced to League football earlier in the season in a 3-2 victory over Man Utd at Old Trafford.

Dennis Wise (forward): Dennis made his League debut v Wimbledon in 1985 after previously failing to break into the Southampton side. He was a member of the Don's FA Cup winning side in 1988 and signed for Chelsea for £1.5 million during the Summer.

Kerry Dixon (forward): Once rejected by Spurs, Kerry's goalscoring exploits for non-league neighbours Dunstable Town led Reading to sign him on professional terms and he made his League debut v Walsall in 1980. Top scorer in two of his three seasons at Elm Park, Chelsea signed him for £175,000 in 1983.

Gordon Durie (forward): Paisley born, Gordon made his League debut for East Fife v Stranraer in 1981. He joined Hibernian in 1984 and came south to Chelsea the following year. During Chelsea's Division Two championship season he was top scorer with 17 goals. Gordon is a Scottish international.

Kevin Wilson (forward): Kevin scored twenty goals last season and was Chelsea's top scorer. He began his career with Derby County before Ipswich signed him for £100,000 in 1985. It was while he was at Portman Road that he broke into the Northern Ireland side. Chelsea signed him for £335,000 in 1987.



Dennis Wise

BARCLAYS FOOTBALL LEAGUE DIVISION ONE

P	W	D	L	F	A	Pts	W	D	L	F	A	Pts
16	7	1	0	20	3	Liverpool	6	1	1	14	9	41
17	6	2	0	18	4	Arsenal**	5	4	0	15	5	37
17	5	3	0	13	8	Crystal Palace	4	3	2	13	9	33
17	6	2	1	23	12	Tottenham	2	4	2	8	7	30
17	5	2	2	17	9	Leeds	3	4	1	11	8	30
16	6	1	1	18	10	Manchester City	0	7	1	10	12	26
17	5	4	0	15	10	Chelsea	2	1	5	15	20	26
17	3	4	2	12	11	Wimbledon	3	3	2	15	12	25
17	5	1	3	15	9	Manchester United*	2	4	2	8	11	25
17	5	1	3	15	15	Norwich	2	1	5	8	13	23
17	3	2	2	12	9	Nottingham Forest	2	4	3	10	13	21
17	3	4	1	9	6	LUTON TOWN	2	1	6	10	21	20
16	3	4	0	11	6	Aston Villa	1	2	6	6	12	18
17	3	2	3	13	11	Southampton	1	2	6	9	21	16
16	2	4	3	11	15	Derby	2	0	5	5	13	16
16	3	3	3	13	9	Everton	0	3	5	6	14	15
17	2	4	3	9	9	Sunderland	1	2	5	11	17	15
17	2	4	3	12	12	Coventry	1	2	6	3	10	14
17	2	1	5	11	12	QPR	1	2	6	10	22	12
16	0	2	5	3	11	Sheffield United	0	2	7	4	19	4

**Two points deducted *one point deducted
(As at December 17, 1990)

Leading goalscorers (league and cup): Rush (Liverpool) 14, Platt (Aston Villa) 13, Wegerle (QPR) 13, Gascoigne (Tottenham) 13, Saunders (Derby) 12, Beardsley (Liverpool) 11, Lineker (Tottenham) 11.

APPEARANCES AND GOALSCORERS 1990/91

	League		Ltlwds Cup		F.A. Cup	
	Aps	Gls	Aps	Gls	Aps	Gls
David Beaumont	14(1)	-	2	-	-	-
Kingsley Black	16	3	2	1	-	-
Tim Breacker	8	-	1	-	-	-
Alec Chamberlain	17	-	2	-	-	-
Iain Dowie	17	3	2	-	-	-
John Dreyer	17	2	2	-	-	-
Lars Elstrup	17	10	1	-	-	-
Sean Farrell	-(4)	-	-	-	-	-
Richard Harvey	12(2)	-	2	1	-	-
Ceri Hughes	15	1	2	-	-	-
Julian James	6(1)	-	1(1)	-	-	-
Marvin Johnson	9(3)	-	-(1)	-	-	-
Darron McDonough	7(4)	-	-	-	-	-
Kurt Nogan	-(4)	-	1(1)	-	-	-
David Preece	17	-	2	-	-	-
Jason Rees	5(6)	-	1(1)	-	-	-
Steve Williams	10	-	1	-	-	-

Aug 25	Crystal Palace	1-1	9,583	-	Chamberlain
Aug 29	Arsenal	1-2	32,723	-	Chamberlain
Sept 1	Southampton	2-1	14,878	8	Chamberlain
Sept 4	Manchester United	0-1	12,576	11	Chamberlain
Sept 8	Leeds United	1-0	10,185	7	Chamberlain
Sept 15	Queens Park Rangers	1-6	10,186	11	Chamberlain
Sept 22	Coventry City	1-0	8,336	7	Chamberlain
Sept 25	Bradford City (RLC21)	1-1	5,120	-	Chamberlain
Sept 29	Norwich City	3-1	12,794	6	Chamberlain
Oct 10	Bradford City (RLC22)	1-1	6,180	-	Chamberlain
Oct 20	Sunderland	0-2	20,005	8	Chamberlain
Oct 27	Everton	1-1	10,047	7	Chamberlain
Nov 3	Derby County	1-2	15,008	8	Chamberlain
Nov 10	Liverpool	0-4	35,207	13	Chamberlain
Nov 17	Manchester City (FAC1)	2-2	9,564	12	Chamberlain
Nov 24	Aston Villa	2-0	10,071	9	Chamberlain
Dec 1	Nottingham Forest	2-2	16,498	10	Chamberlain
Dec 8	Arsenal (FAC2)	1-1	12,506	11	Chamberlain
Dec 16	Crystal Palace	0-1	15,195	12	Chamberlain
Dec 19	West Ham (ZDSC)				
Dec 22	Tottenham Hotspur				
Dec 26	Sheffield United (KO 11.30am)				
Dec 29	Chelsea				
Jan 1	Wimbledon				
Jan 5	FA Cup 3				
Jan 12	Southampton				
Jan 19	Leeds United				
Jan 26	FA Cup 4				
Feb 2	Queens Park Rangers				
Feb 9	Coventry City				
Feb 16	Manchester City (FAC5)				
Feb 23	Liverpool				
Mar 2	Nottingham Forest				
Mar 9	Aston Villa (FAC6)				
Mar 16	Norwich City				
Mar 23	Manchester United				
Mar 30	Sheffield United				
Apr 1	Tottenham Hotspur				
Apr 6	Chelsea				
Apr 13	Wimbledon (FACSF)				
Apr 20	Sunderland				
Apr 21	League Cup Final				
May 4	Everton				
May 11	Derby County				
May 18	FA Cup Final				

Breacker	James	McDonough	Beaumont	Dreyer	Elstrup	Preece	Dowie ¹	(Hughes)	Black	[Rees]	Harvey
Breacker	(James)	McDonough	Beaumont	Dreyer	Elstrup ¹	Preece	Dowie	Hughes	(Black)	[Rees]	[Harvey]
Breacker	James	(McDonough)	Beaumont	Dreyer	Elstrup ²	Preece	Dowie	Hughes	(Rees)	[Harvey]	[Nogan]
Breacker	(Harvey)	(James)	Beaumont	Dreyer	Elstrup	Preece	Dowie	Hughes	Black	[Rees]	[Johnson]
Breacker	James	Rees	Beaumont	Dreyer	Elstrup	Dowie	Hughes	(Preece)	(Black ¹)	[Johnson]	[Nogan]
Breacker	(James)	(Rees)	Beaumont	Dreyer	Elstrup	Preece	(Dowie)	Hughes ¹	Black	[Nogan]	McDonough
Breacker	Harvey	Rees	Beaumont	Dreyer	(Elstrup)	Preece	Dowie ¹	Hughes	Black	[James]	Nogan
Breacker	(Harvey ¹)	Rees	Beaumont	Dreyer	(Elstrup)	Preece	Dowie	Hughes	Black	(James)	[Nogan]
Breacker	Harvey	Williams	Beaumont	Dreyer	Elstrup ³	Preece	Dowie	Hughes	Black	James	Nogan
James	Harvey	Williams	Beaumont	Dreyer	Nogan	Preece	Dowie	Hughes	(Black ¹)	(Rees)	[Johnson]
Harvey	Harvey	Williams	Beaumont	Dreyer	Elstrup	Preece	Dowie	(Hughes)	(Black)	(McDonough)	[Rees]
Harvey	Harvey	Williams	Beaumont	Dreyer	(Elstrup ¹)	Preece	Dowie	Hughes	Black	[Rees]	McDonough
Johnson	Harvey	Williams	Beaumont	Dreyer	Elstrup	Preece	(Dowie)	Hughes	(Black ¹)	(Nogan)	McDonough
Johnson	Harvey	Williams	Beaumont	Dreyer	Elstrup	Preece	Dowie	(Hughes)	Black	[Farrell]	McDonough
Johnson	Harvey	Williams	Beaumont	Dreyer ¹	(Elstrup)	Preece	Dowie ¹	(Hughes)	Black	[McDonough]	[Farrell]
Johnson	Harvey	Williams	McDonough	Dreyer	Elstrup ¹	Preece	Dowie	Hughes	Black ¹	James	Farrell
Johnson	Harvey	Williams	McDonough	Dreyer	Elstrup ²	Preece	Dowie	(Hughes)	Black	[Beaumont]	Farrell
Johnson	Harvey	Williams	McDonough	Dreyer ¹	Elstrup	Preece	Dowie	(Rees)	Black	Beaumont	[Farrell]
Johnson	Harvey	Williams	McDonough	Dreyer	Elstrup	Preece	Dowie	(Beaumont)	(Black)	[Farrell]	[Rees]

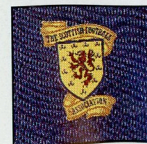
MAN IN CHARGE

M.D. Reed (Birmingham)

A training executive, Michael is married with two children. He commenced refereeing in the Birmingham and District works League in 1973 and progressed via the West Midlands Regional League to the Football League in 1985. He lists his hobbies as photography and gardening.



OFFICIAL SUPPLIERS TO:



Voucher No. 12

STAR PERFORMER



VAUXHALL *Once driven, forever smitten*



VAUXHALL IS BACKED BY THE WORLDWIDE RESOURCES OF GENERAL MOTORS. CAR SHOWN CALIBRA 16V.

VAUXHALL TEAM CHECK.

LUTON TOWN

Team Manager: Jim Ryan
White Shirts, Navy Shorts

- 1 Alec Chamberlain
- 2 Marvin Johnson
- 3 Richard Harvey
- 4 Steve Williams
- 5 Darron McDonough
- 6 John Dreyer
- 7 Lars Elstrup
- 8 David Preece
- 9 Iain Dowie
- 10 Ceri Hughes
- 11 Kingsley Black

Subs



umbro

Official Kit Sponsors



Official Ball
Sponsors

CHELSEA

Team Manager: Bobby Campbell
Yellow Shirts, Yellow Shorts

- 1 Dave Beasant
- 2 Gareth Hall
- 3 Graham Le Saux
- 4 Andy Townsend
- 5 Jason Cundy
- 6 Kenneth Monkou
- 7 Graham Stuart
- 8 John Bumstead
- 9 Kerry Dixon
- 10 Gordon Durie
- 11 Dennis Wise

Subs

Referee: M.D. Reed (Birmingham) Linesmen: R. Coaten (red trim) G.M. Lee (yellow trim).

Designed and printed by Abacus Press, Berkhamsted, Herts.