

# TOWN

OFFICIAL PROGRAMME £1.20

# NOT



Tuesday, September 4, 1990, Kick-off 7.45 p.m.

# MANCHESTER UNITED

BARCLAYS FOOTBALL LEAGUE DIVISION ONE

This match is sponsored by: Anachem Ltd, Wilton Truck Rental, Bonder Uk, SKF(UK) Ltd.



I N T H E

F R A M E



●Lars Elstrup opens the scoring at Highbury with a great near post header.

## APOLLO SYSTEMS LTD.

0582 34928 - 481102

- ★ Electrical Installations
- ★ Industrial and Commercial Maintenance
- ★ Fire Alarms
- ★ C.C.T.V. Installations
- ★ Suspended Ceilings
- ★ Office Partitions & Screens
- ★ Fireproof Curtain Walls

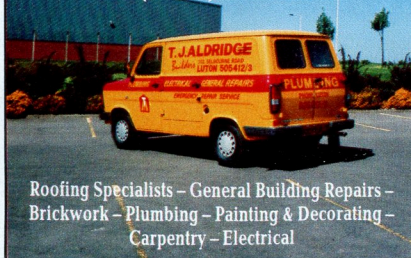
39B SHAFESBURY RD, LUTON

## T.J. ALDRIDGE

Builders

302 Selbourne Rd. Luton

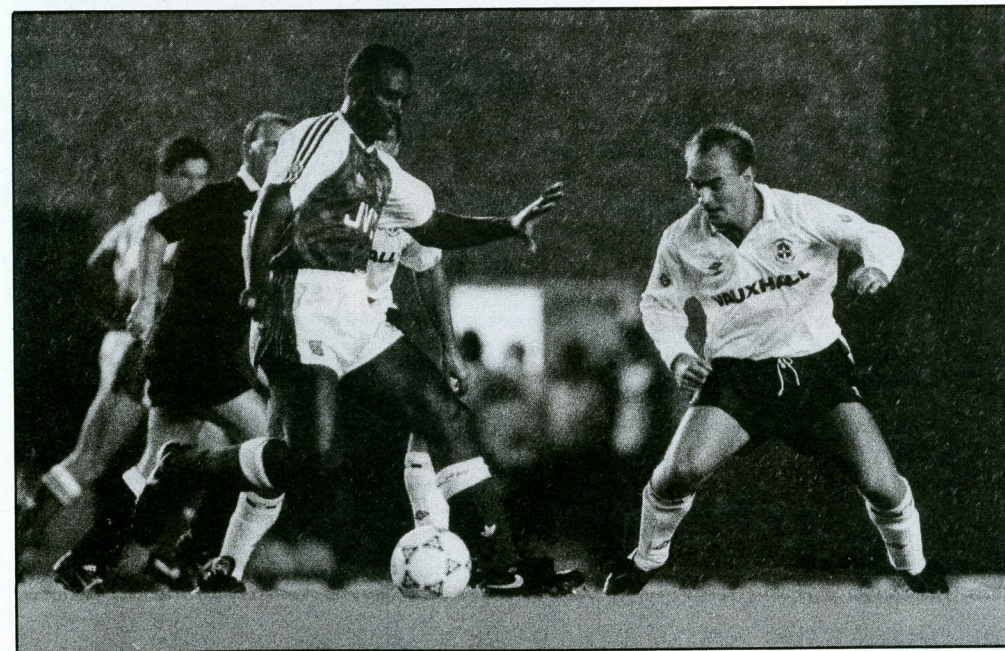
Tel: (0582) 505412-3



Roofing Specialists - General Building Repairs -  
Brickwork - Plumbing - Painting & Decorating -  
Carpentry - Electrical



●Iain Dowie (above) and David Preece (below) are pictured in action during our 2-1 defeat at Arsenal.



S O C C E R L I

N E 08 39 664466

38p per min Peak  
25p per min off Peak



STRIKING PERFORMER,  
WORKS HARD, PLAYS WELL.



**VAUXHALL** Once driven, forever smitten



VAUXHALL IS BACKED BY THE WORLDWIDE RESOURCES OF GENERAL MOTORS. CAR SHOWN ASTRA GTE.



**Kenilworth Road Stadium**  
1 Maple Road, Luton, Beds LU4 8AW

**PRESIDENT**

E.S. Pearson

**CHAIRMAN**

Peter Nelkin

**DEPUTY CHAIRMAN**

Roger Smith

**DIRECTORS**

C.J. Hudson, D.A. Kohler, H. Richardson,  
D.G. Watson-Challis

**GENERAL MANAGER/SECRETARY**

Bill Tomlins

**TEAM MANAGER**

Jim Ryan

**VICE PRESIDENTS**

R.L. Banks, C. Bygraves, I.E. Holmes, R. Larkinson,  
R. Safranek, E. Waller

**HONOURS**

LITTLEWOODS CUP WINNERS 1987/88  
FA CUP FINALISTS - 1958-59  
LITTLEWOODS CUP FINALISTS - 1988-89  
SIMOD CUP FINALISTS - 1987-88  
CHAMPIONS - DIVISION 3(S) 1936-37  
CHAMPIONS - DIVISION 4 1967-68  
CHAMPIONS - DIVISION 2 1981-82

**LUTON TOWN HOTLINE**

**Match Tickets, Match Enquiries,  
Membership, Junior Matters:**

Ring - Cherry Newbery,  
Ticket Supervisor - Luton (0582) 411622  
24 Hour Service - Luton (0582) 30748

**Advertising and Match Sponsorship:**

Ring - Wendy Grzybowska, Commercial Manager  
Luton (0582) 411622

**Stadium Hire/Special Events:** Ring - Barbara Maclean,  
Special Events Manager Luton (0582) 411622

**Umbro Sportswear/Souvenirs:** Ring - Bev Tyler,  
Sales Supervisor Luton (0582) 411622

**Banqueting Function Facilities:** Ring - Peter Saul  
Catering Manager Luton 411526

**Promotions Office:** Lotteries - Ring John Cornall,  
Development Executive Luton (0582) 411622

**Soccerline:** Ring - 0839 664 466 (38p per min peak)  
(25p off peak)

**Club Office hours:**

8.45 am - 5 pm Luton (0582) 411622 Fax: (0582) 405070

Edited by: Robert Alexander Associates  
PR and Media Consultants, Hitchin.

Pictures by: Apex Photography, Milton Keynes

**JIM  
RYAN**

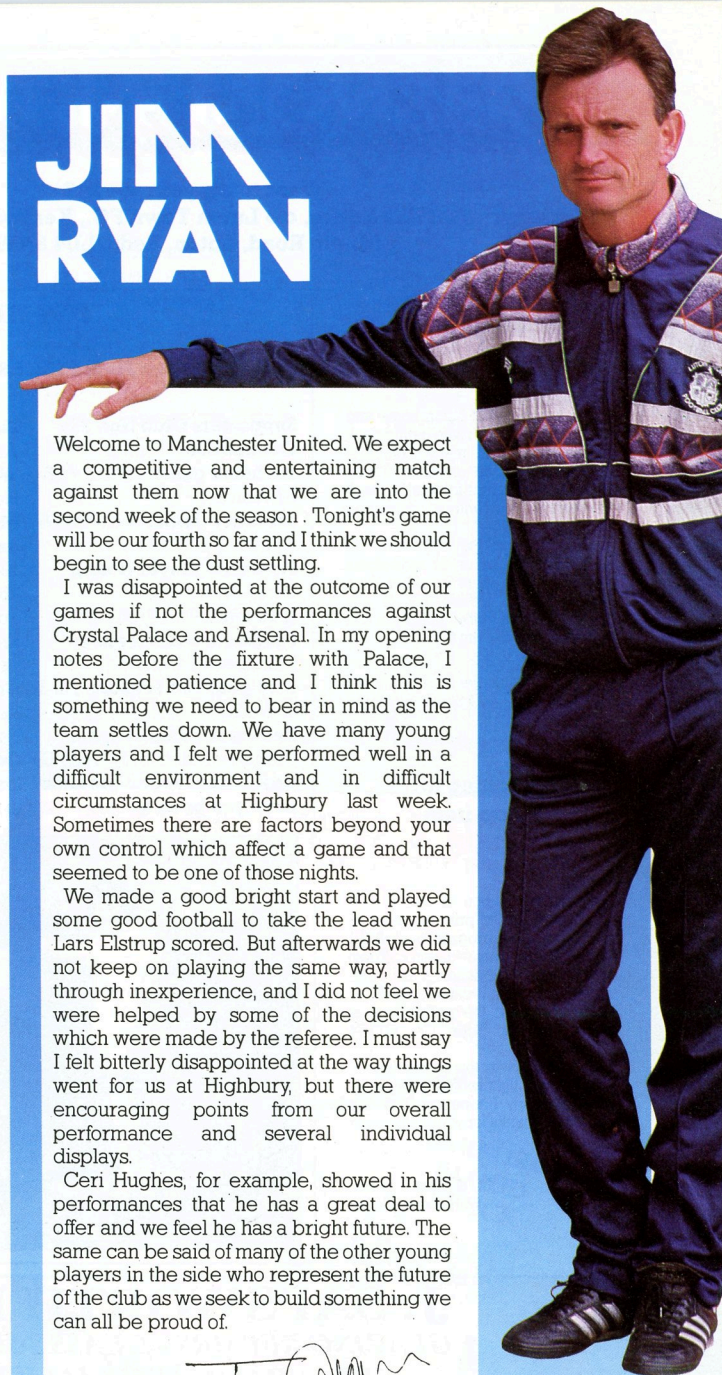
Welcome to Manchester United. We expect a competitive and entertaining match against them now that we are into the second week of the season. Tonight's game will be our fourth so far and I think we should begin to see the dust settling.

I was disappointed at the outcome of our games if not the performances against Crystal Palace and Arsenal. In my opening notes before the fixture with Palace, I mentioned patience and I think this is something we need to bear in mind as the team settles down. We have many young players and I felt we performed well in a difficult environment and in difficult circumstances at Highbury last week. Sometimes there are factors beyond your own control which affect a game and that seemed to be one of those nights.

We made a good bright start and played some good football to take the lead when Lars Elstrup scored. But afterwards we did not keep on playing the same way, partly through inexperience, and I did not feel we were helped by some of the decisions which were made by the referee. I must say I felt bitterly disappointed at the way things went for us at Highbury, but there were encouraging points from our overall performance and several individual displays.

Ceri Hughes, for example, showed in his performances that he has a great deal to offer and we feel he has a bright future. The same can be said of many of the other young players in the side who represent the future of the club as we seek to build something we can all be proud of.

*Jim Ryan*





# Mailbag & Supporters News

Want to air your views?

Please write to: The Editor, c/o Luton Town FC., Kenilworth Road Stadium,  
1 Maple Road, Luton, Beds. LU4 8AW.

## Programmes for sale

Dear Sir

I have a number of Luton home and away programme for sale dating back to the war with many complete seasons from 1955 onwards. These come in transparent folders for each programme (but without damaging the programme).

I am prepared to sell them as complete seasons or as individuals and will accept offers for either. I am also willing to devote 5% of any proceeds to the club. I hope you can find the space to print this

Thanks

Richard Coulthard  
4 Shortlands Road  
Kingston  
Surrey KT2 6HD

## Searching for a rare item

Dear Sir

I am writing to you to see if it is possible for you to print my letter in one of your future programmes, what I require for my Luton Town Programme collection is one programme that I cannot seem to obtain anywhere the programme is Luton Town v Notts Co 1973/74 seasons.

I do not know why this programme is so rare to buy I am willing to pay up to £5.00 for a copy. I hope someone can help. Many thanks for your help in this matter.

Yours faithfully

Mr & Mrs C Girdler  
58 Hibiscus Road  
Bordon  
Hants  
GU35 0XA

## FAN FILE

### No 2: PHIL FRANCIS

**Supporters Club No:-** 231

**Occupation:-** Printer

**1st home game:-** Barrow 66-67 Won 3-1

**1st away game:-** Watford 68-69 Lost 0-1

**Favourite player (Past),**

Peter Anderson,

**(Present),** Tim Breaker

**Favourite other team/s:-** Manchester United

**Best goal last season:-** All 3 at Derby

**Best ever goals:-** Graham French v Mansfield (H) 68-69

**How many league grounds have you been to:-** 31

**Favourite away ground:-**

Arsenal

**Worst ground been to:-** Northampton

**Most memorable Luton**

**game:-** Littlewoods Cup final 1988

**Your all time Luton team:-**

Tony Read, Max Dougan, Fred Jardine, Alan Slough, Terry Branston, John Moore, Keith Allen, Bruce Rioch, Ray Whittaker

**Oddspot:-** Only seen Luton lose 19 times away from home in over 20 years



## J. SAPSWORTH LTD

GLAZING REPAIRS - GLASS SUPPLIES

DECORATING SPECIALISTS

92 MARSH ROAD, LUTON, BEDS.

☎ GLAZING & 24 hr EMERGENCY SERVICE 0582 573025

DECORATING 0582 597505

FAX 0582 492025

# EXECUTIVE MEMBERS

ABB ROBOTICS

AC COMMUNICATIONS (UK) LTD

ANACHEM LTD

MR. T. BAILEY

MRS. E. BAIN

MR. R. BANKS

BERVALE MEAD

INSURANCE BROKERS

BEVANGRAVE

W.J. BILLINGTON

BLAKEY ENGINEERING

MR. J. BOYLAN

BROAD STREET PRINT

MR. R. BROOKS

CAMPBELL FROZEN FOODS

CAPITAL METALWORK

CHAMBERLAIN FURNISHINGS

CHILTERN RADIO

CLARENDON HATS

CRANE & STAPLES SOLICITORS

MR. T. COATES

MR. B. COLE

COMPLETE CONTRACTS

CONVOY INSTALLATIONS

MR. P. COOPER

DISCOUNT KING TYRE &  
EXHAUST CENTRE

DUPONT (UK)

FENNEMORES SOLICITORS

FILMERGRAPHIC PRESS

FLITWICK OIL COMPANY

MR. E. FOUNTAIN

F & T GOODWIN

V.G. GREEN & SON

MR. D. HALES

HANDSCOMBE FINANCIAL SERVICE

HANS-JURGEN (IMPORTERS)

R.W. HARVEY & SON

B. HICKS & COMPANY

HOLMES COMMERCIAL PROPERTY

HUMBERGROVE INSURANCE

JOHN LAING CONSTRUCTION

J.S.B. BUSINESS FORMS

J.M. KEENAN

MR. P. LAYCOCK

MARK JAMES SALVAGE

MILCUTT ENGINEERING

NBM CARPENTRY &  
BUILDING SERVICES

MR. N. OWEN

MR. J. PATTINSON

MR. M. PATTINSON

PAUL MOORE DECORATORS

F.W. PEARCE BUILDERS

MR. S. PEARSON

PREMIER BODYSHOP

DR. D.A. RUBIN

MR. D.C. RUTT

MRS. J. SHERIDAN

E.C.J. SHOREY TRAVEL

SPACE DISPLAY SYSTEMS

SWIFTS OF LUTON

TILDAL INVESTMENTS

TOOLING SERVICE

TWIGDEN HOMES

VAUXHALL MOTORS

WILTON TRUCKS

## SOCCKERLINE

0839 664466

38p per min Peak

25p per min off Peak

# EXECUTIVE BOX HOLDERS



Herald & Post  
Britain's Free Newspaper



RYDER  
FINANCIAL  
SERVICES

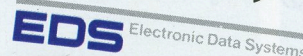
Broadreach Services Limited



FITZPATRICK CONTRACTORS



BARFORD  
BLOOD  
STOCK





*Richard C. Larkinson* (CAMBRIDGE) LTD.

## SECONDARY METAL MERCHANTS

STATION WORKS  
123a HILLS ROAD  
CAMBRIDGE CB2 1PG  
Telephone 315854 / 315890

East Anglia's leading cash scrap metal buyers with a century of service

### READ THIS, AND YOU'RE ALREADY CLOSER TO LUTON AIRPORT

Brussels will be the latest addition to our rapidly growing Scheduled Services timetable that currently includes Amsterdam, Maastricht, Belfast (Aldergrove & Harbour), Dublin, Cork, Galway, Isle of Man, Mahon, Malta, Malaga, Tenerife, Waterford, Jersey, Guernsey, Knock, Shannon, Kerry and Leeds/Bradford, with more to be added soon.

All aimed at providing your business customers with a range of key destinations and level of service worth a closer look.

**LUTON**  
*international*  
**AIRPORT**

*Close to you*

LUTON INTERNATIONAL AIRPORT, LUTON LU2 9LY. TELEPHONE: (0582) 405100. TELEX 826409. PRESTEL 34470.

### HOW TO GET THERE

**QPR v Luton Town**  
**Saturday, September 15, 1990**  
**South Africa Road**  
**London W12 7BA**

By road: Take M1 south to junction one. Then take A406 towards Neasden. Turn left to join A404 towards Hammersmith, turn right into White City Road then left into South Africa Road. Street parking available.

By rail: Ranger's Stadium is a few minutes walk from Shepherd's Bush underground station (Metropolitan Line) and White City (Central Line).

### NEW SOCCERLINE NUMBER

Please make a note of the new number being used this season for our up-to-the-minute Soccerline news service. The number is 0839 664466. Soccerline brings you all the latest news and views on Luton Town FC.

### BOBBERS TRAVEL CLUB

1. After any home match from the entrance to the Bobbers Club in Oak Road (5 - 5.30 or 9.45 - 10.15 pm).
2. By telephoning Paul Deason on Bedford (0234) 750996 (evenings only).  
Fares to Queen's Park Rangers will be 4.50 adults, 3.50 juniors/senior citizens.

### HANDBOOK ON SALE

Make sure you do not miss out on ordering your copy of the Luton Town handbook 1990-91. It is on sale tonight at the Sports Shop in Oak Road, price £2.50.

### NEW CENTRE OF EXCELLENCE TO OPEN SOON

A new Centre of Excellence for the development of young players is due to open on Thursday, September 13, at 6pm, at the John Henry Newman Leisure Centre in Stevenage. The F.A. approved centre, administered by Luton Town FC, is ideally located for youngsters in the Stevenage and Hertfordshire area. It has easy access and is close to the A1 (M). The coaching will be organised and led by Luton Town's Youth Development Officer Paul Lowe. Players currently on the Town's books who have come from the area include Richard Harvey, Richard Watkiss, Ian Rutherford and Paul Newman.

## SUPPORTERS CLUB NEWS

Well, it seems no time at all since the Town's Houdini act at the Baseball Ground last May, which secured First Division survival, but here we are again in familiar surroundings and already looking forward to our second home fixture of the new season.

The Supporters Club would like to take this opportunity to wish a fond farewell to Danny Wilson and Mick Kennedy, who departed at the end of the close season, and wish them both success in their new homes at Hillsborough and the Victoria Ground, Stoke. We would also like to wish Les Sealey, who left us much earlier after a long loan spell with Manchester United, all the very best too, but not of course during this evening's fixture.

Our first open evening this season was a great success with chairman Peter Nelkin together with directors David Kohler and Henry Richardson as our guest speakers. It was very interesting to meet them and here their views. I am sure that the good working relationship the Supporters Club has enjoyed with the Football Club will continue.

The success of our own club has been shown by the deluge of mail during recent weeks and our membership grows by the day. If, however, you have not joined or rejoined please come to our kiosk at the back of the main stand after the game and we will be delighted to see you.

Also, if you are interested in playing football for the supporters club, whether you are male or female, please come along and talk to our football coach. The fixtures are mounting up already.

Finally, best wishes to Jim and the team for the coming season. They need all our vocal support at each match and not just at the end of the season.

Pam Gray  
Chairperson  
Luton Town Supporters' Club

## CAPTAIN JOHN'S DEBUT



•John Dreyer leads out the team as captain for the first time in the First Division. Good luck, John.



## ATTENTION ALL LUTON TOWN MEMBERS !

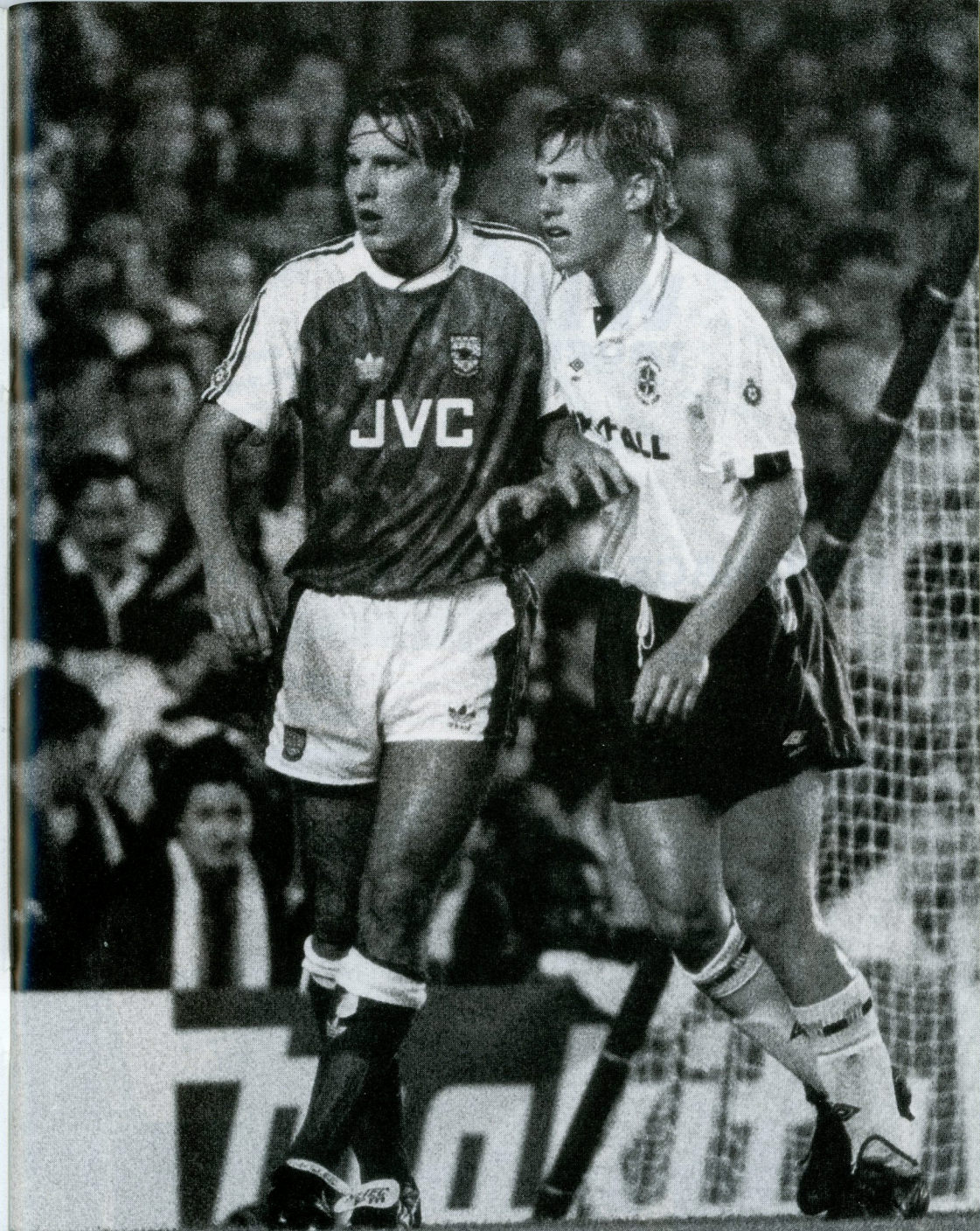
- Half Fare Scheme Available Every Saturday From 25 August 1990 To May 1991.
- *Covers All Services Operated By Luton And District*
- *See The Town Play In London By Travelling on The 757 Express Service To London (Half fare for members)*

*THERE'S NO CHEAPER WAY TO TRAVEL TO SEE YOUR FAVOURITE TEAM IN ACTION*

For further information telephone

**LUTON  
& DISTRICT**

LUTON (0582) 404074  
DUNSTABLE (0582) 472172  
AYLESBURY (0296) 84919  
RED ROVER (0296) 28686  
STEVENAGE (0438) 740979  
HITCHIN (0462) 434132



**Close encounter:** Paul Merson and Julian James at Highbury.



SPOT RENTAL TO CONTRACT HIRE

## Wilton TRUCK RENTAL

STEVENAGE 352469 & LUTON 417559

## BONDER U.K. YOUR PARTNERS IN FINISHING

Pyrene Chemical Services Limited  
Ridgeway, Iver,  
Buckinghamshire SL0 9JJ  
Telephone: Iver (0753) 651812  
Fax (0753) 652460 Telex: 847693

LEADING SUPPLIERS OF PRETREATMENT TECHNOLOGY

**BONDER**  
U.K.

# BOX OFFICE UPDATE

## BARCLAYS LEAGUE DIVISION ONE

### Luton Town v Leeds United Saturday, September 8, 1990

Members are reminded that there are no guest tickets for this match on sale tonight. Any members wishing to purchase guest tickets may do so tomorrow (Wednesday), Thursday or Friday. The sale of guest tickets will stop when the ticket office closes at 4pm on Friday (September 7). THERE WILL BE NO GUEST TICKETS AVAILABLE ON THE DAY OF THE MATCH.

### Queen's Park Rangers v Luton Town

Saturday, September 15, 1990.

Tickets for seats for this match will be available at £9 from Thursday, September 10. There are no concessions. Supporters wishing to stand at this match can pay on the turnstiles on the day. Price £6. No concessions.

### OFFICIAL HANDBOOK ON SALE NOW 1990-1991 Price £2.50

Southern Junior Floodlit  
Cup  
Luton Town v Birmingham  
City  
Monday, September 10, 1990  
Kick-off 7.30pm

### STAY UP TO DATE WITH SOCCERLINE

Make sure you know all the latest news and views from Luton Town by ringing Soccerline this season. Soccerline has a new number - 0839 664466. Calls are charged at 38p per minute peak and 25p off-peak.

### FORTHCOMING MATCHES AT KENILWORTH ROAD

Ovenden Papers Football Combination  
Luton Town v Southampton  
Saturday, September 1, 1990  
Kick-off 2.00p.m.

Barclays League Division One  
Luton Town v Manchester United  
Tuesday, September 4, 1990  
Kick-off 7.45p.m.

**CALL  
SOCCERLINE  
ON**

**0839 664466**

38p per min Peak  
25p per min off Peak

For all the latest news and  
views from Luton Town





by BILL TOMLINS

## THE TOWN

## GUESTING POLICY TO

GOOD LUCK  
SHALOM

• On trial: Shalom Tikva has joined us for a short trial period.

Good evening and welcome to Manchester United, the FA Cup holders. We congratulate them on that success and feel, in a small and special way of our own, that we played a part in it by allowing Les Sealey to continue on loan at United to play in the final replay.

It was, of course, just part of the cooperation between the clubs which enabled us to have Mal Donaghy on loan at Kenilworth Road during a sticky period with injuries. We preserved our First Division status in the end over 38 games and not just the game at Derby on the final day and so our relationship with United had a benefit for us as well as them.

As many of our supporters may know, tonight's fixture is one that was rearranged from October 6 when we were due to meet United here. The Football League had overlooked our request for an away match on that day and United were not happy at the idea of agreeing to our original request to switch our home and away fixtures.

This would have given them a very heavy home programme in October and they were much happier to come here tonight. Since we are entering the Zenith Data Systems Cup and they are back in Europe in the European Cup Winners Cup, both managers were keen on a busy schedule at the start of the season.

We are of course delighted to see United and Aston Villa back in Europe and leading the English clubs' return. We shall be rooting for their success because the more successful they are the larger the number of clubs which will gain entry from the First Division to European competitions next year.

Many fans will have noted also from calling Soccerline – the new service begins, by the way, on September 10 – and reading the local newspapers and listening to the local radio, that our guesting policy is being modified for the fixture with Leeds United on Saturday.

No guest tickets will be available tonight or after 4pm on Friday and I hope the moves are self-explanatory

## CHANGE FOR LEEDS

given the possibilities if a large following from Yorkshire were to take advantage. The police both there and here have co-ordinated with Leeds United and overselves in supporting this move to ensure the safety of everyone at the match.

As I have said many times before, our membership scheme depends for its success upon the members. If a minority of our members flout the system and the rules and go out and tout or sell tickets they undermine the system for everyone and risk everyone's safety.

## Safety first

Anyone who does this does not know who they are selling their tickets to or what the repercussions could be. We are primarily concerned with doing our utmost to ensure the safety of spectators in the ground.

On Saturday, our stewards and police will be working vigilantly both inside and outside the ground and there will be mounted police on horseback around the ground and at all major points of entry.

We are aware that Leeds United are back in the First Division after an absence of eight years and there will be great enthusiasm to follow them. But it was much the same for Millwall when they visited us in their first season in the First Division and we hope our scheme will be respected.

It has its benefits and one of the chief ones in that it can be operated to ensure the safety of our supporters in the ground. We have said before that the membership scheme was introduced as a controlled experiment and it will be reviewed. We do not want to see that review spoilt before it takes place.

Finally, during a hectic schedule in the last two weeks, we have welcomed Shalom Tikva, who has joined us for a short trial period. Shalom is a 26-year-old Israeli international and he made his first appearance in Town colours last week at Fulham in a Football Combination fixture. We wish him all the best of luck at Kenilworth Road.



• John Dreyer in action with Palace's new signing Glyn Hodges here on the opening day of the season.

## CAPTAIN'S DIARY



JOHN DREYER

## TAKING HEART

It is great to be back in the swing of things with a new season at last and I feel we can take heart from our early performances. It was not easy to play against Crystal Palace, which I thought was a difficult first game because of their long-ball style and reputation for closing teams down.

It was probably not a good game as a spectacle either, but we tried our best to play some football and in the end I think a draw was a fair result. It was a fair reflection of the game. We had most of the game, but they made more clear chances.

Arsenal was a different matter. They are obviously looking to regain the title and have spent on quality players. But we took the game to them and when Lars Elstrup scored for us I thought we deserved to lead at that stage.

## Great spirit

Unfortunately, we did not go on and grab a second goal but took a step back and paid them too much respect. We lost our way in the second half and in the end we conceded two goals from bad defensive errors.

I think, however, that we can take heart from that performance overall and continue to improve. We have several young players in the side and as ever the spirit is excellent. We certainly feel fully fired up at the moment and will be looking forward to tonight's game very much.

**Joining in the fun:** Godfrey Ingram, one of our talented youngsters from the early 1980's, has been back training at Kenilworth Road. He is currently playing in the U.S. Indoor League and is getting fit for the new season.





# FIRST TEAM ACTION

## Luton 1 Crystal Palace 1

Iain Dowie, continuing to produce the sharp form which he displayed during the pre-season friendlies, salvaged a point for the Town after an indifferent first half which saw Palace take the lead with an Eric Young header after 14 minutes.

Dowie's goal came after 44 minutes and was the result of a fine move involving home debutant Ceri Hughes, Lars Elstrup and Julian James, who overlapped Elstrup to provide the perfect cross for Dowie to head past Palace keeper Nigel Martyn.

The Town's second-half performance was altogether more solid and inventive with McDonough, Preece and Hughes, who gained in confidence all the time, going close and being unlucky not to score the goal that would have secured all three points.

**Town:** Chamberlain, Breacker, James, McDonough, Beaumont, Dreyer, Elstrup, Preece, Dowie, Hughes (Rees 81), Black. **Crystal Palace:** Martyn, Humphrey, Shaw, Gray, Young, Thorn, Barber, Thomas, Salako, Wright, Hodges (Dennis 86).

**Referee:** Allan Gunn.

**Attendance:** 9,583, (Sussex).



● Action from the clash with Palace: Darron McDonough, Ceri Hughes, Kingsley Black and Iain Dowie are pictured during the 1-1 draw with the Eagles.





**828 AM**  
**Chiltern Radio**

**SUPERGOLD**

*for the Greatest Hits of All Time  
and Unrivalled Daily Sports News!*

**SUPERGOLD 828 AM**  
**in Herts. Beds & Bucks**



**High Power Pressure Washers:**  
**Sales, Hire, Service Repairs,**  
**Spares, Maintenance Contracts.**

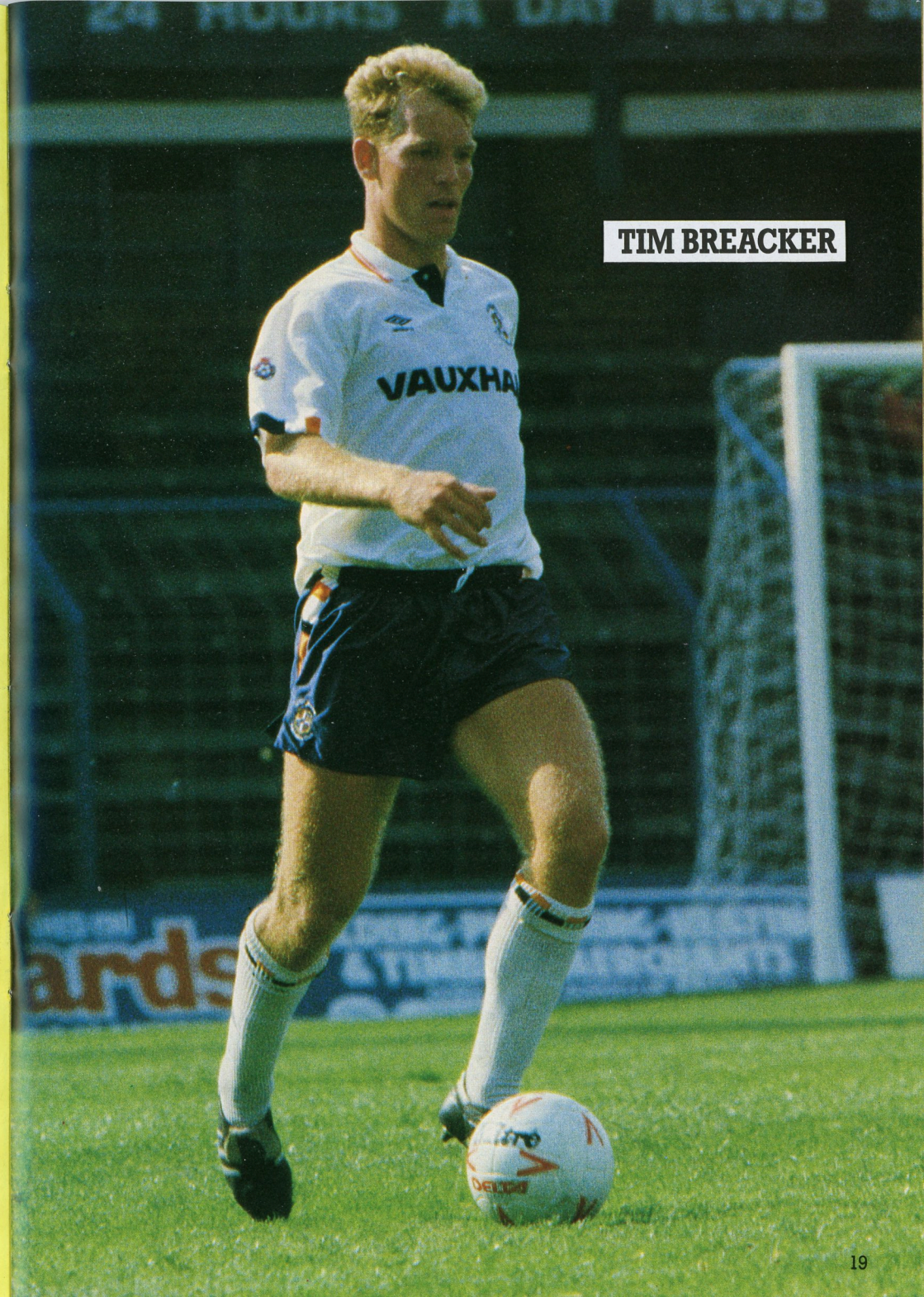
SPECIALISTS IN SALES & SERVICING OF  
PRESSURE WASHERS  
(Most makes repaired)

Main distributor for 'Warwick'

**JR Power Cleaning**

11 Sunbeam Rd., Woburn Rd. Ind. Est., Kempston,  
Bedford MK42 7BZ. Fax: (0234) 840110

**0234 840838**



**TIM BREACKER**





## PLAYER PROFILE

### TIM BREACKER

**Name:** Tim Breacker

**Born:** Bicester Oxford

**Date:** 2-7-65.

**Height:** 6ft.

**Weight:** 12st 10lb.

**Married:** Yes

**Who would you most like to meet and why?:** Lady Di

**What other sportsman would you most like to be and why?:** Linford Christie/reason obvious.

**How many O levels did you get?:** Seven (I just look dumb!).

**What are your hobbies?:** Knitting.

**Who are four favourite pop stars?:** Jive Bunny.

**What is your favourite food?:** Big Mac's.

**What is your favourite ground and why?:** Wembley (best away record).

**Who is your most difficult opponent and why?:** Iain Dowie (he's a handful).

**Who is your favourite other player and why?:** Jim Ryan in training - easy game.

**Have you got a nickname at Luton?:** Briegel.

**What is your idea of relaxation?:** pipe and slippers in front of the fire.



# LUTON TOWN SPORTS SHOP FOR ALL THE FAMILY



New Umbro Replica shirts with Vauxhall logo now in stock  
Stylish ladies and gents tracksuits, childrens tracksuits at reasonable prices

V neck sweaters and rugby shirts

Indoor and match footballs

Umbro trainers and football boots

Scarves, coffee mugs, caps, badges, pennants.

**SEE OUR SELECTION ON DISPLAY IN THE SHOP AT THE TOP OF  
OAK ROAD OR TAKE ADVANTAGE OF OUR MAIL ORDER  
FACILITY. TEL (0582) 411622. ACCESS AND VISA ACCEPTED**

**SOCCKERLINE 0839 664466** 38p per min Peak  
25p per min off Peak



# BARCLAYS

## Junior Hatters

### ANOTHER OUTING BOOKED

- Tonight we give a warm welcome to FA Cup holders Manchester United. We could see two ex-Luton players at Kenilworth Road – Mal Donaghy and Les Sealey.
- I understand that today was the first day back to school after your summer break. I hope it was not too hard for you and you enjoy tonight's game.
- I have been asked if we can run another trip to Drayton Manor Park as the day out in June was a big success. Well, I can let you know that a coach is booked for Sunday, September 30th.
- This is a family leisure park with a zoo and farm with rare breeds, and a reptile house.
- There are a host of rides for you to have a go on – like aerial cable cars, rio grande railway, buffalo mountain coaster, giant wheel, python looping coaster, gallopers, waltzer, and a giant slide, lakes with rowing boats, crazyu golf and many more.
- You can take a packed lunch or you can buy refreshments from the many kiosks or the cafeteria. The price for the magnificent day out will be on a party booking. The price for the coach and entry to the park will be £6.50 for parents and £5.50 for Junior Hatters.
- You can buy an arm band for all the rides at £4.50. This is not included in your coach price as not everyone from the Oak Road Sports Shop.
- Book early please as we have to book the coaches. Lets make this a big family day out.
- The coach will leave from the Oak Road car park at 8.30am and will depart from Drayton Manor at 4.30pm. A coach will be going to Norwich to see the first team play. More details in our next home programme.

Jason Rees



Jason Rees, President

### LUCKY NUMBERS

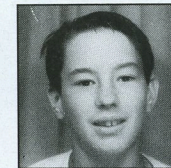
Tonight's Lucky Junior Hatters membership number is 270608 – Steven Millett. He gets two free tickets to one of our home games. Please bring your membership card with you. Have a good time and I will see you next Saturday when our visitors are Leeds United

### MASCOT

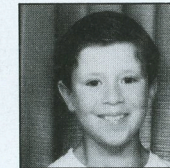


Lauren Shanley

### ESCORTS



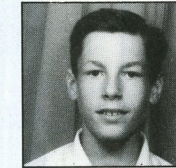
Stephen Ghent



Craig Bowman



Graeme Lewis



Simon Josh

### BARCLAYS JUNIOR HATTERS COMPETITION MATCH NO. 1 ANSWERS

POINTS

A1 Millwall A2 209 (Two hundred and nine)

### QUESTIONS FOR MATCH NO.2

Q1 Brian Horton played for Luton, what team is he manager of now? ..... 1

Q2 In 1989 Julian James made his league debut, name the game. .... 3

Return date Friday 7th September 1990

Name ..... Address .....

Tel ..... D.O.B. .... MEM. NO. ....

Answers Match 1: 1) ..... 2) .....

Please return slip to Barclays Bank Plc, 28 George Street, Luton, Beds. All slips to be returned to the Bank by Friday, 7th September, 1990.





BY WENDY GRZYBOWSKA

## NOW ON SALE

### LUTON TOWN FOOTBALL CLUB



**OFFICIAL HANDBOOK**  
1990-1991 £2.50

## ALEC IS SPONSORS TOP HATTER



•Fred Butt, Luton Rotary club president, congratulates Alec Chamberlain who was man of the match against Palace.

## FEW SPONSORS DEALS

A warm welcome to our match sponsors tonight Anachem Ltd, Wilton Truck Rental, Bonder UK and SKF (UK) Ltd and also to our ball sponsors Luton International Airport. We are also pleased to welcome one of our vice-presidents Richard Larkinson who is entertaining his clients this evening in Box 28.

Our sponsorships are taken up by many different companies large and small to ensure they have a good relationship with their clients, customers and staff.

The main match sponsorship is an all-inclusive package which includes a wine reception, a welcome from the chairman and the directors, a special behind-the-scenes tour of the facilities, including the home dressing room, the boot room and medical facilities, followed by a four-course meal with a guest speaker.

After watching the match from specially-reserved seats in the main stand, the sponsors' party

are joined in their lounge by the players for drinks after the match. Presentations to the man of the match take place then and everyone enjoys an opportunity to exchange their views on the result.

This type of sponsorship, which always proves to be very popular, is often taken by just one company. In this case, the costs can range from £2,000 to £7,000 depending on the visiting team.

However sometimes, the sponsorship is split up between a small number of companies with bookings of 10 to 15 people for each company. This enables smaller companies to enjoy the same benefits but on a smaller scale. Tables usually cost around £45 to £65 per head depending on the status and reputation of the visiting team.

The matches which are still available for this package for the 1990-91 season are Coventry, Aston Villa, Sheffield United and

## REMAIN

Southampton.

As some of our supporters will already know, we also have available a number of executive suites within the club which enable individuals or businesses to enjoy a facility where they can enjoy a drink, something to eat and reserved seats within the main stand for the season.

We have two suites in particular in which we have memberships still available. One is our Century Club where the seasonal fee is £450 plus VAT and the other is our Kenilworth Suite where the fee is £950 plus VAT per person.

If you would like to know more about these suites ring me at the club and I will be delighted to give you more details and show you the facilities on offer.

## KURT IS ON THE BALL



•Kurt Nogan presents an autographed match ball to our Palace sponsors' Roy Murfitt of Davroy Ltd.

Today's

**MATCH SPONSOR**

# ANACHEM

## TOP OF THE LEAGUE FOR LIQUID HANDLING



**ANACHEM LIMITED** Anachem House 20 Charles Street LUTON Bedfordshire LU2 0EB  
Tel: (0582) 456666 Telex: 825275



## REPORT AND YOUTH



George Ley John Moore

## OVENDEN PAPERS FOOTBALL COMBINATION 1990/91

Date	Opponents	Result
1990/91		F-A
Aug 29	Fulham	3-0
Sept 1	Southampton	
Sept 11	Chelsea	
Sept 15	Watford	
Sept 26	Charlton Athletic	
Sept 29	West Ham United	
Oct 6	Wimbledon	
Oct 10	Brighton & Hove Albion	
Oct 13	Reading	
Oct 20	Chelsea	
Oct 27	Portsmouth	
Nov 3	Crystal Palace	
Nov 10	Millwall	
Nov 20	QPR	
Nov 28	Swindon Town	
Dec 1	Oxford United	
Dec 12	Reading	
Dec 15	Wimbledon	
Dec 22	Charlton Athletic	
Jan 5	Tottenham Hotspur	
1991		F-A
Jan 18	Norwich City	
Jan 22	Portsmouth	
Jan 26	QPR	
Feb 6	Oxford United	
Feb 9	Arsenal	
Feb 16	Fulham	
Feb 23	Tottenham Hotspur	
Mar 5	Watford	
Mar 9	Swindon Town	
Mar 20	Crystal Palace	
Mar 23	Ipswich Town	
Mar 30	Southampton	
Apr 8	Millwall	
Apr 16	Norwich	
Apr 20	Ipswich Town	
Apr 23	Arsenal	
May 2	West Ham United	
May 4	Brighton & Hove Albion	

BPC = Bedfordshire Premier Cup

Our annual tournaments in May and June in Holland were again very successful and our young players will have learnt a great deal which will hold them in good stead in the future. At the Hague (u-21) we maintained our excellent record by winning four of our five games to finish third for the second year running. **Results:** (Den Haag) – v Telstar (Holland) won 2-0 Hughes, Gillard v Spartak Brnave (Czechoslovakia) won 1-0 Rutherford v Japanese National XI lost 1-3 Hughes v Den Haag A.D.O (Holland) won 2-1 Hughes Crawshaw v Club Deportivo Catolica (Chile) won 3-2 (pens after 0-0)

At the U-23 tournament in Amsterdam (Blauw-wit) the going proved tough for our young side, half of which were youth team players.

## OVENDEN PAPERS FOOTBALL COMBINATION FINAL TABLE 1989-90

	P	W	D	L	F	A	Pts
Arsenal	38	26	6	6	84	51	84
Tottenham Hotspur	38	25	6	7	93	47	81
Chelsea	38	22	6	10	78	47	72
Millwall	38	20	11	7	58	36	71
Norwich City	38	20	7	11	66	41	67
Wimbledon	38	18	9	11	69	46	63
West Ham United	38	18	7	13	83	59	61
Oxford United	38	16	9	13	73	58	57
Brighton & Hove Albion	38	15	6	17	52	66	51
Portsmouth	38	12	13	13	47	57	49
Swindon Town	38	15	3	20	58	68	48
<b>Luton Town</b>	<b>38</b>	<b>13</b>	<b>8</b>	<b>17</b>	<b>68</b>	<b>70</b>	<b>47</b>
QPR	38	14	5	19	65	93	47
Crystal Palace	38	11	10	17	56	50	43
Southampton	38	10	12	16	45	58	42
Ipswich Town	38	12	5	21	60	75	41
Watford	38	11	8	19	59	79	41
Reading	38	11	8	19	64	86	41
Charlton Athletic	38	11	6	21	49	70	39
Fulham	38	4	7	27	25	95	19

## RESERVES – APPEARANCES &amp; GOALSCORERS

	Football Combination			Football Combination	
	Apps	Gls		Apps	Gls
ALLPRESS	23(2)	1	McDONOUGH	6	–
BEAUMONT	3	–	McGONAGLE	4(6)	1
BROWN	3(4)	1	NOGAN	19(3)	8
CAMPBELL	1(1)	–	O'BRIEN	5(1)	1
COBB	22(6)	5	O'SULLIVAN	7(6)	1
COOKE	17	4	PEMBRIDGE	26(2)	1
COOPER	–(1)	–	PETERSON	23	–
CRAWSHAW	16(5)	4	POUTCH	27(2)	1
DOWIE	4	2	REES	18(2)	2
ELSTRUP	4	4	RICHARDS	5(1)	–
FARRELL	1	2	RODGER	5	–
GILLARD	1(3)	–	ROSENTHAL	2	3
GORMLEY	(2)	–	RUTHERFORD	(2)	–
GRAY	18	7	SALTON	14(4)	2
HARVEY	8	3	SCOTT	32(1)	2
HUGHES	25(2)	2	SEALEY	15	–
HARFORD	1	1	SHANLEY	2(5)	–
JACKSON	8	–	TELFER	3(8)	1
JAMES	9	1	TIGHE	19	3
JOHNSON M	11	2	THOMPSON	–	–
LAWFORD	(6)	–	WILLIAMS	11(1)	1

## UPDATE

However, although only finishing sixth we were never outplayed and performances were generally very good. **Results:** (Blauw-Wit) – v Volendam (Holland) drew 0-0

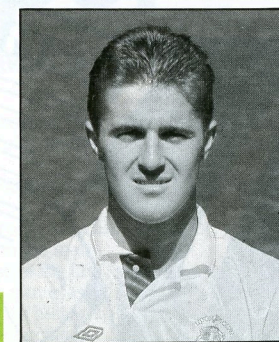
v Leirise SK (Belgium) drew 2-2 Nogan 2

v Bohemians Praag (Czechoslovakia) lost 0-2

v DWS Amsterdam (Holland) won 5-1 Nogan 2, Scott 1, Harvey 1(pen), Grant

v Dundee Utd (Scotland) lost 1-2 Nogan

Our thanks for the excellent co-operation and financial package offered regarding our flights to cover these tournaments goes to KLM Royal Dutch Airlines.



Paul Gray – Scored at Fulham.

## SOUTH EAST COUNTIES FINAL LEAGUE TABLE 1989-90

	P	W	D	L	F	A	Pts
Crystal Palace	30	23	5	2	74	23	51
Oxford United	30	19	4	7	69	34	42
Northampton	30	14	7	9	48	37	35
Southampton	30	13	8	9	41	37	34
Wimbledon	30	13	7	10	54	32	33
<b>Luton Town</b>	<b>30</b>	<b>11</b>	<b>10</b>	<b>9</b>	<b>42</b>	<b>47</b>	<b>32</b>
Brighton & Hove Albion	30	13	4	13	45	39	30
Colchester United	30	14	2	14	48	48	30
Bristol Rovers	30	14	2	14	51	60	30
Reading	30	12	5	13	43	38	29
Bristol City	30	13	3	14	43	40	29
A.F.C. Bournemouth	30	10	7	13	45	47	27
Brentford	30	10	6	14	47	51	26
Tottenham Hotspur	30	10	2	18	38	57	22
Swindon	30	9	4	17	37	57	22
Aldershot	30	3	2	25	26	104	8

## SOUTH EAST COUNTIES LEAGUE Division Two 1990/91

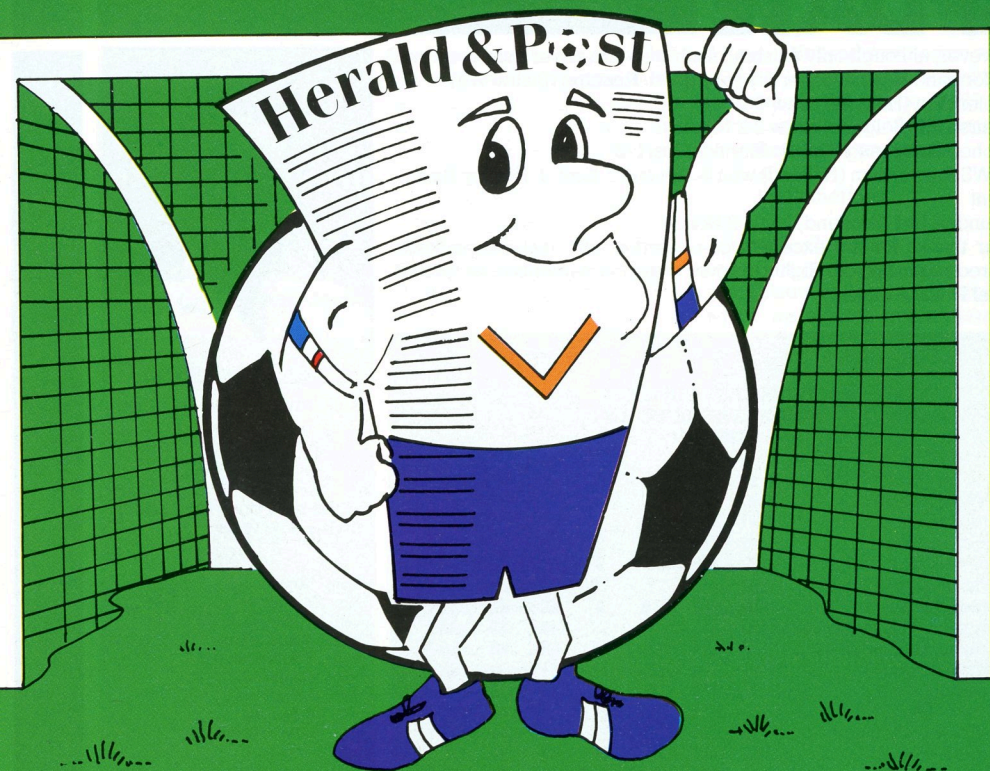
Date	Opponents	Result
Aug 25	Bristol City	1-2
Sept 1	Maidstone United	
Sept 8	Swindon Town	
Sept 10	Birmingham City	
Sept 15	Oxford United (LCI)	
Sept 22	Bournemouth	
Sept 29	Aldershot	
Oct 6	Oxford United	
Oct 13	Brentford	
Oct 20	League Cup 2	
Oct 27	Crystal Palace	
Nov 3	Tottenham Hotspur	
Nov 10	Reading	
Nov 17	Colchester	
Nov 24	Bristol Rovers	
Dec 1	Southampton	
Dec 8	Wimbledon	
Dec 15	League Cup 3	
Dec 22	Brighton	
1991		
Jan 5	Bristol City	
Jan 12	Maidstone United	
Jan 19	Swindon Town	
Jan 26	Bournemouth	
Feb 2	Aldershot	
Feb 9	Oxford United	
Feb 16	Brentford	
Feb 23	Crystal Palace	
Mar 2	Tottenham Hotspur	
Mar 9	Reading	
Mar 16	Colchester	
Mar 23	Bristol Rovers	
Mar 30	Southampton	
Apr 6	Wimbledon	
Apr 13	Brighton	

## YOUTH TEAM – APPEARANCES &amp; GOALSCORERS

	SEC League			SEC League	
	Apps	Gls		Apps	Gls
BRADING	–	–	McGILL	20(1)	–
BROWN	20(3)	9	McGONAGLE	24	3
BRITTIAN	1	–	MOORE	1	–
CAMPBELL J	25(3)	6	MELDRUM	2(1)	–
CAMPBELL M	2(1)	–	MURRAY	3(7)	1
CARTER	1(2)	–	NEWMAN	4(1)	1
COOPER	27	3	NOLAN	5(2)	–
DENHAM	1	–	OSULLIVAN	16(1)	3
DIBLEY	2(8)	–	RICHARDS	5	–
ELLIOTT	1(1)	–	ROGERS	4(1)	–
GILLARD	11(1)	3	RUTHERFORD	9(7)	2
GORMLEY	21(6)	6	SALTON	19	1
HANCOCK	14	–	SUTTON	4(1)	–
HAWKES	1	–	TELFER	23	–
HEATH	(1)	–	TILLY	–	–
HOLTHAM	1	–	THOMPSON	23(2)	1(2)
JACKSON	17	3	UDDIN	1	–
KENNY	1	–	WATKISS	16	–
LAWFORD	16(8)	1	WOODS	1	–



# JOIN THE WINNING TEAM



## Herald & Post Line-up

**READ THEIR NEWS AND VIEWS EACH WEEK IN**

### LUTON & DUNSTABLE

Kingsley Black, Lars Elstrup

### BEDFORD

Tim Breacker

### MILTON KEYNES

Alec Chamberlain

### STEVENAGE/HATFIELD

Richard Harvey, Iain Dowie

### AYLESBURY

Marvin Johnson

### TRING

Julian James

### LEIGHTON BUZZARD

David Preece

### ST ALBANS/HARPENDEN

Darron McDonough, Kurt Nogan

### HEMEL HEMPSTEAD

Lars Elstrup

**The Best for News and Sport**

**The Best for Advertising**

**Britain's Free Newspaper THE Herald & Post**

**Tel: LUTON 38981**

**Tel: LUTON 401234**

# Guest Spot

**'It's going to be a tough one' – Mal Donaghy**

Mal Donaghy is enjoying a new lease of life at the start of this season with Manchester United, but he knows he cannot expect any favours tonight when he hopes to be playing here at Kenilworth Road against his former club.

"Obviously, it is going to be a very tough match for us. I know myself just what to expect on the plastic pitch and I think it will suit us and the way we play.

"But it will not be an easy game and I am just hoping I can be part of it. At a club like United you can never take anything for granted and at the moment I am just glad to be in the team.

"I started the season in the team and I have played as a sweeper in the first couple of matches. I like the position, but I am just taking each game as it comes after my luck last season when played some games at centre half and then got switched around everywhere. It is nice to settle down in a position.

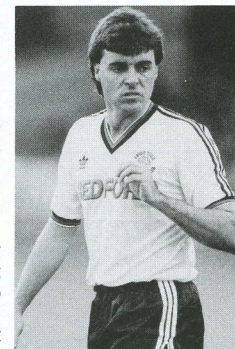
### Entertainment

"I always think the Kenilworth Road pitch suits footballing teams and that is why I said it suits us. United are one of the best footballing sides in the division and we should enjoy ourselves and make it an entertaining game."

Mal, who will be 33 in September, is obviously enjoying his opportunity to stake a claim for a regular place again with United and with it the chance to play in front of another former Town Favourite in Les Sealey.

Les joined United during the close season after turning in an outstanding performance for them in the FA Cup final replay against Crystal Palace last May and, like Mal, he is revelling in the chance to carry on playing at the top level with a big club.

"At United, you cannot afford to take anything for granted at all," says Mal. "It is such a big club. But that does not mean we shall be under-estimating Luton tonight. I know only too well how difficult a game it could be for us."



# And coming here next...

## LEEDS UNITED

Leeds Utd, newly promoted as Second Division champions, will be the next visitors to Kenilworth Road on Saturday, September 8, kick-off 3.00pm.

The last league encounter between the two teams here at Kenilworth Road was back in 1975. The result was a 2-1 victory, in the Town's favour. Leeds have been a sleeping giant since the early seventies when they were League champions, FA Cup winners and constant challengers for European honours.

It has been hard for managers and teams since to follow the success of players such as Billy Bremner, Norman Hunter and Mick Jones. It is the ambition of manager Howard Wilkinson to bring back those glory days to Elland Road again.

Mr Wilkinson brings into the First Division a squad bolstered by newcomers John Lukic, a £1 million buy from Arsenal, Gary McAllister, a £1.5 million signing from Leicester City and Chris Whyte, signed from West Brom for £450,000.

Leeds started their first Division One campaign for eight years in fine form, beating Everton 3-2 at Goodison Park and drawing 0-0 with Manchester United. It will be intriguing to see how they fair on the artificial pitch on September 8. Make sure you do not miss it. It should be one the most exciting games of the season.



**FRED FACTOR**

**SAVES THE DAY!**

BARCLAYS COMMERCIAL SERVICES

AFTER MAGNIFICENT PLAY IN COLLECTIONS, CREDIT CONTROL & CLIENT MANAGEMENT.

...BCS WENT ON TO MAKE AN 80% IMMEDIATE AVAILABILITY OF CASH TO THE CLIENT.

AFTER THE VICTORY, BRIAN WOOD, TEAM MANAGER, STRESSED THAT THIS WAS A TYPICAL TEAM GAME. FRED FACTOR & BCS PLAYED 365 DAYS A YEAR, WITHOUT HOLIDAYS WITHOUT COMPUTER FAILURE & WERE AVAILABLE FOR ANY FIXTURE FOR ANY ESTABLISHED BUSINESS TRADING ON NORMAL CREDIT TERMS.

**WINNERS CUP**

**BARCLAYS COMMERCIAL SERVICES +++**

**FOR FULL DETAILS ON FACTORING:**  
 FRED FACTOR, BARCLAYS COMMERCIAL SERVICES LTD, AQUILA HOUSE, BREEDS PLACE  
 HASTINGS, EAST SUSSEX TN34 3DG  
 TEL: (0424) 430824 FAX: (0424) 427322 TELEX: 95450

BARCLAYS COMMERCIAL SERVICES ARE MEMBERS OF THE ASSOCIATION OF BRITISH FACTORS & DISCOUNTERS AND FACTORS CHAIN INTERNATIONAL

# ■ TAKE YOUR PIC! ■



● **Creater and scorer:** Kingsley Black is pictured on the ball against Palace (top). Iain Dowie (below) scored the goal from a perfect Julian James cross.





## Into the COMPUTER Age with DBF Crosswinds Ltd

- LISTING PAPER
- PRE-PRINTED CONTINUOUS FORMS
- SNAP APART SETS
- CONTINUOUS CHEQUES
- COMPUTER RIBBONS
- MAGNETIC MEDIA
- MAILERS
- SELF ADHESIVE LABELS
- REGISTER SETS
- OCR/OMR FORMS
- WORD PROCESSING STATIONERY
- A COMPLETE DESIGN SERVICE
- GRAPHICS & TECHNICAL ILLUSTRATION, INCLUDING LASER GRAPHICS AND DATA GRAPHICS
- PRINTED: OFFICE STATIONERY LETTER HEADS, INVOICE SETS STATEMENTS, ETC.

- FOR THE HOME MARKET WE SELL SINGLE BOXES ONLY IF REQUIRED.

- ALL TRADE HOUSES SUPPLIED

**SPECIAL RATES for CASH and CARRY**

**DBF Crosswinds Ltd**  
COMPUTER AND BUSINESS STATIONERY

MARTIN HOUSE, UNIT A, CRADOCK ROAD  
LUTON, BEDFORDSHIRE LU4 0UF  
TEL: (0582) 582010/582020 - FAX: (0582) 582030



## HELPING THE GAME

The Football Trust 1990 has been created to help the game at all levels and to assist clubs meet the requirements of Lord Justice Taylor's Final Report.

Safety and comfort for all spectators is the primary objective and substantial funds have been made available for the provision of seating at Football League grounds. At the same time the Trust's commitment to family and community initiatives will continue with the provision of more family enclosures, better toilet facilities, covered accommodation, artificial pitches for local use and the development of women's and junior football particularly through community programmes, plus a wide range of policing and crowd control measures.

Each year The Trust expects to receive £20 million from the reduction in Pool Betting Duty plus the £10 million continuing contribution from the Spotting-the-Ball competition organised by Littlewoods, Vernons and Zettors. This money will be invested in projects which benefit football throughout the United Kingdom.



A fine new stand - one of the many initiatives supported by Trust funds.

# WELCOME TO... MANCHESTER UNITED



Back Row: (l to r) Mal Donaghy, Lee Sharpe, Viv Anderson, Les Sealey, Jim Leighton, Mike Phelan, Neil Webb, Steve Bruce. Middle Row: (l to r) Jim McGregor (Physiotherapist), Archie Knox (Assistant Manager), Colin Gibson, Brian McClair, Russell Beardsmore, Clayton Blackmore, Paul Ince, Ralph Milne, Norman Davies (Kit Manager). Front Row: (l to r) Danny Wallace, Dennis Irwin, Mark Robins, Bryan Robson, Alex Ferguson (Manager), Mark Hughes, Gary Pallister, Lee Martin.

● Good afternoon and a warm welcome to Kenilworth Road to Manchester United, who we also congratulate after winning this year's FA Cup final, beating Crystal Palace after a replay. United started the season unbeaten with a 2-0 win against Coventry City and a 0-0 draw with Leeds. Last Saturday they defended this start at Sunderland.

● Denis Irwin and former Town favourite Les Sealey are the new faces at Old Trafford this season. Denis was a £650,000 summer signing from Oldham and Les was signed from Luton after his fine display in this year's FA Cup final replay, during his on-loan spell from Kenilworth Road.

● Manchester United F.C. was founded in 1878 when employees of the Lancashire and Yorkshire Railway Company formed Newton Heath Cricket and Football Club. Newton Heath, after winning the Manchester Cup in 1886 and joining the Second Division soon after, went bankrupt and the modern United was formed.

● United's greatest honour was in 1968, when they became the first English club to win the European Cup. They beat Benfica 4-1 at Wembley after extra time.

Bobby Charlton(2), George Best and Brian Kidd scored the goals.

● Alex Ferguson is the sixth man in the last 20 years to manage Manchester United, taking over from Ron Atkinson in 1986. Since 1945, the managers of Manchester United have been: Matt Busby (1945-69), Wilf McGuinness (1969-70), Frank O'Farrell (1971-72), Tommy Docherty (1972-77), Dave Sexton (1977-81) and Ron Atkinson (1981-86).

● Since taking over as manager of United, Mr Ferguson enjoyed only limited success, until last May when the club won the FA Cup final at Wembley. The team's impressive performance lifted optimism at the start of this season and United have been among everyone's title contenders.

● The last time United won the first division championship was in 1967. They had previously won it on six occasions: 1907-08, 1910-11, 1951-52, 1955-56 and 1964-65.

● United are back in Europe the season after winning the F.A. Cup. They are in the European Cup Winners Cup and we wish them the best of luck.



# OFF THE RECORD

## LOOKING BACK WITH JIM RYAN

Jim Ryan came south from his home team of Starling to join Manchester United as a 17-year-old in January 1963 and eventually forced his way into the League side for the final four games of 1965/66, – *writes Roger Wash*

Over the next four seasons he made a further 17 League appearances plus three as substitute but suffered the double misfortune of firstly continually trying to get a place in team which boasted such names as Best, Law and Charlton and secondly always seeming to get picked when Chelsea were the visitors to Old Trafford, the Blues enjoying holding the Indian sign at the time and inflicting big defeats on United throughout the late 1960's.

"Luton chief scout Harry Haslam came to watch Don Givens and myself playing for United reserves at Coventry and, with the knowledge of Alec Stock, approached us to see if we would like to come to Kenilworth Road. The result was, that we both joined Luton in April 1970 shortly before the end of the promotion winning season from Division Three."

Jim enjoyed a good first season at Luton making 34 appearances plus four as substitute as the promotion push to Division One blew up at Easter but suffered through injury in 1971/72 before becoming virtually ever present again in the following campaign.

The next two seasons saw the club promoted to

### LAST FIVE MEETINGS AT KENILWORTH ROAD

1989/90	18/11/89	Luton 1 (Wilson) Man Utd 3 Att: 11,141
1988/89	17/9/88	Luton 0 Man Utd 2 Att: 11,010
1987/88	3/10/87	Luton 1 (Harford) Man Utd 1 Att: 9,137
1986/87	14/3/87	Luton 2 (Harford, B. Stein) Man Utd 1 Att: 12,509
1985/86	8/10/85	Luton 1 (B. Stein)) Man Utd 1 Att: 12,454

\* Roger Wash is our official club statistician.  
Anyone with inquiries or comments please write to him  
c/o The Editor, Luton Town F.C., Kenilworth Road Stadium,  
1, Maple Road, Luton LU4 8AW.

### IT HAPPENED.....

**FIVE YEARS AGO (7/9/85)** Chelsea were the visitors to Kenilworth Road and went home with a point from a 1-1 draw. Mick Harford scored the Towns goal.

**TEN YEARS AGO (6/9/80)** Frank Bunn scored his first Luton goal in the 1-1 home draw with Wrexham.

**FIFTEEN YEARS AGO (6/9/75)** Goals from Adrian Alston and Andy King gave the Town a 2-0 win at Portsmouth – one of our happier hunting grounds at the time.

**TWENTY YEARS AGO (5/9/70)** A single Don Givens goal secured the points in a 1-0 win over Middlesbrough at Kenilworth Road watched by a crowd of 16,018. Alan Guild made his only Luton appearance in the game.

Division One and then relegated again in quiet succession but Jim Ryan reckons that the team of that time were the best he played in during his spell at Luton.

"Probably because I was fully involved I feel that the team that won promotion was the best I played in but during the relegation season the performances are put on after Christmas showed we were very unlucky to go down."

After two final seasons at Luton the new Soccer Scene in the USA beckoned and Jim enjoyed seven or eight years playing firstly for Dallas Tornado and then moving indoors at Wichita Wings.

After coming back to England a business venture in Manchester was slow to take off and when John Faulkner approached his old friend to tell him that there was a coaching vacancy at Luton a new career dawned with the rest, as they say, history.

"If asked to name the best player I teamed up with at Luton I, of course, remember Malcolm MacDonald but I also had high regard for Alan Slough and two of my team mates from the promotion season Alan West and Peter Anderson.

The greatest player though was the vastly underrated Don Givens who created so many goals for MacDonald."



• Jim Ryan with John Aston (left) and Bobby Thomson (right) shows concern as Peter Anderson is treated by Reg Game.

## Luton News

TOWN & COUNTRY • Mid and South Beds

DUNSTABLE GAZETTE

# 1st AND BEST!

All the LUTON  
TOWN NEWS from  
**BRIAN SWAIN**

The 'Man in the know'



**WEDNESDAYS 14p**





*Simply The Best!*

◆ SATURDAY SPORTSOUND 2-6PM ◆  
 ◆ DAILY SPORTS DESKS ◆  
 ◆ MID-WEEK MATCH COVERAGE ◆

**103.8FM & 630kHz AM**  
 S T E R E O

**ROADS**  
**BUILDINGS**  
**ASPHALT**

Attention to detail, quality and personal contact are still our biggest advantages.

**FITZPATRICK**

A CONCERN FOR CONSTRUCTION

**FITZPATRICK CONTRACTORS LTD**

Hertford Road  
 Hoddesdon, Herts EN11 9BX

Tel. No. 0992 445757 Fax. No. 0992 446882 Tlx. No. 8954170

## FOR THE RECORD

Today we begin a new 'football diary' to keep you up to date:

**June 26:** David Platt scores in the last minute of extra time to give England a 1-0 win over Belgium and a quarter-final meeting with Cameroon.

**June 30:** Holders Argentina are through to the semi-finals after beating Yugoslavia on penalties. Five out of nine penalties were not converted. Ireland are knocked out by favourites Italy in Rome, Salvatore Schillatchi scoring the only goal.

**July 1:** England beat Cameroon 3-2 in extra time after battling back from being 2-1 down and 12 minutes away from defeat.

**July 3:** Argentina beat Italy after a penalty shoot-out to progress to the World Cup final. Bookings mean Argentina will be without four players.

**July 4:** England lose to West Germany after yet another penalty shoot-out. Stuart Pearce and Chris Waddle both miss. Peter Shilton announces his retirement from international football.

**July 8:** West Germany become World Champions after Andreas Brehme scores a second half penalty against Argentina who have two players sent off.

**July 9:** Fifa officially announce new laws of the game relating to professional fouls and the offside law.

**July 10:** Graham Taylor is announced as the new manager of England in succession to Bobby Robson who joins PSV Eindhoven in Holland.

## FOCUS ON MANCHESTER UNITED

**Les Sealey (goalkeeper):** Signed a one-year contract with United this summer as a reward for his faultless display in this year's FA Cup final. Formerly a popular Luton keeper, Les started his career at Coventry City before joining The Hatters for £120,000 in 1983.

**Steve Bruce (defender):** Steve, who was signed from Norwich for £825,000 in 1987, has played for England at 'B' and youth levels. He started his career with Gillingham where he made over 200 appearances before moving to Norwich in 1984.

**Gary Pallister (defender):** Gary was signed from Middlesbrough for £2.3 million in August 1989. He developed in the junior teams at Middlesbrough but, before he established himself in the senior side, he spent a loan period with Darlington.

**Mal Donaghy (defender):** Former Luton favourite, Mal can play either at full back or centre back. He was transferred to Luton from Larnie in 1978 and during a decade in the Hatter's side he made over 400 league appearances and became the club's most capped player. Mal was signed for £750,000 in 1988.

**Lee Martin (defender):** Lee joined United as a junior and made his league debut in 1988 in a 2-1 v Wimbledon. Lee has since established himself to be United's regular left back and scored the winning goal in this year's Cup Final at Wembley.

**Denis Irwin (defender):** Denis was United's only pre-season signing, making the short trip from Oldham for £650,000. A Leeds regular for three seasons, Denis signed for Oldham in 1986.

**Paul Ince (midfield/defender):** Though Paul made his name scoring important goals from midfield for West Ham, Paul filled in most of last season for United at right back. He made his debut for West Ham in 1986 before signing for United for £1.2 million in 1989.

**Mike Phelan (midfield):** Mike made his league debut playing for Burnley v Chesterfield in 1981. He made over 200 appearances for the Clarets before moving to Norwich in 1985.

**Neil Webb (midfield):** Neil began his career with Reading before signing for Portsmouth in 1982. England recognition was earned by Neil during his four seasons at Nottingham Forest where he made over 140 league appearances. A £1.5 million signing for United last summer.

**Clayton Blackmore (midfield/defender):** Versatile Clayton made his league debut v Notts Forest in 1984. Neath born, he is now a regular member of the Wales team, and has won over 25 caps for his country.

**Brian McClair (forward):** Once a junior with Aston Villa, Brian got his chance in senior football with Motherwell. Celtic signed him in 1983 and was top scorer in all his four seasons at Celtic Park. United signed Brian for £750,000 in 1987.

**Mark Hughes (forward):** Wrexham born Mark made his international debut for Wales soon after being introduced to the United side in 1983. After twice leading the scoring list, Mark signed for Barcelona in 1986. He later went on loan to Bayern Munich before returning to United in 1988.





# FIRST TEAM

# Luton Town F-A Att Pos 1

Aug 25	Crystal Palace	1-1	9,583	-	Chamberlain
Aug 29	Arsenal	1-2	32,723	-	Chamberlain
Sept 1	Southampton	2-1	14,878	-	Chamberlain
Sept 4	Manchester United				
Sept 8	Leeds United				
Sept 15	Queens Park Rangers				
Sept 22	Coventry City				
Sept 26	League Cup 2(1)				
Sept 29	Norwich City				
Oct 10	League Cup 2(2)				
Oct 20	Sunderland				
Oct 27	Everton				
Oct 31	League Cup 3				
Nov 3	Derby County				
Nov 10	Liverpool				
Nov 17	Manchester City (FAC1)				
Nov 24	Aston Villa				
Nov 28	League Cup 4				
Dec 1	Nottingham Forest				
Dec 8	Arsenal (FAC2)				
Dec 16	Crystal Palace				
Dec 22	Tottenham Hotspur				
Dec 26	Sheffield United (KO 11.30am)				
Dec 29	Chelsea				
Jan 1	Wimbledon				
Jan 5	FA Cup 3				
Jan 12	Southampton				
Jan 16	League Cup 5				
Jan 19	Leeds United				
Jan 26	FA Cup 4				
Feb 2	Queens Park Rangers				
Feb 9	Coventry City				
Feb 13	League Cup S/F(1)				
Feb 16	Manchester City (FAC5)				
Feb 23	Liverpool				
Feb 27	League Cup S/F(2)				
Mar 2	Nottingham Forest				
Mar 9	Aston Villa (FAC6)				
Mar 16	Norwich City				
Mar 23	Manchester United				
Mar 30	Sheffield United				
Apr 1	Tottenham Hotspur				
Apr 6	Chelsea				
Apr 13	Wimbledon (FACSF)				
Apr 20	Sunderland				
Apr 21	League Cup Final				
May 4	Everton				
May 11	Derby County				
May 18	FA Cup Final				

## APPEARANCES AND GOALSCORERS 1990/91

	League	LtIwds	Cup	F.A. Cup
	Aps	Gls	Aps	Gls
David Beaumont	3	-	-	-
Kingsley Black	2	-	-	-
Tim Breacker	3	-	-	-
Alec Chamberlain	3	-	-	-
Iain Dowie	3	1	-	-
John Dreyer	3	-	-	-
Lars Elstrup	3	3	-	-
Richard Harvey	(2)	-	-	-
Ceri Hughes	3	-	-	-
Julian James	3	-	-	-
Darron McDonough	3	-	-	-
Kurt Nogan	(1)	-	-	-
David Preece	3	-	-	-
Jason Rees	1(2)	-	-	-

## BARCLAYS FOOTBALL LEAGUE DIVISION ONE SEASON 1990/91

P	W	D	L	F	A	W	D	L	F	A	Pts
3	2	0	0	4	1	Liverpool	1	0	0	3	1 9
3	1	1	0	3	0	Leeds	1	0	0	3	2 7
3	1	1	0	2	1	Arsenal	1	0	0	3	0 7
3	2	0	0	3	1	Crystal Palace	0	1	0	1	1 7
3	1	0	0	3	1	Tottenham	0	2	0	0	0 5
3	1	0	0	2	0	Manchester United	0	1	1	1	2 4
3	1	1	0	5	3	Coventry	0	0	1	0	2 4
3	0	1	0	1	1	Luton	1	0	1	3	3 4
3	1	1	0	2	1	Sunderland	0	0	1	2	3 4
3	1	0	1	2	2	Southampton	0	1	0	1	1 4
3	1	0	1	1	1	QPR	0	1	0	1	1 4
3	0	0	1	0	3	Wimbledon	1	1	0	2	1 4
3	1	0	0	2	1	Chelsea	0	0	2	1	3 3
2	1	0	0	1	0	Manchester City	0	0	1	1	3 3
3	1	0	0	3	2	Norwich	0	0	2	0	4 3
3	0	2	0	2	2	Derby	0	0	1	1	2 2
3	0	1	0	1	1	Nottingham Forest	0	1	1	1	4 2
2	0	1	0	1	1	Aston Villa	0	0	1	1	2 1
3	0	0	1	1	3	Sheffield United	0	1	1	1	2 1
3	0	0	1	2	3	Everton	0	0	2	1	4 0

2	3	4	5	6	7	8	9	10	11	12	14
Breacker	James	McDonough	Beaumont	Dreyer	Elstrup	Preece	Dowie <sup>1</sup>	(Hughes)	Black	[Rees]	Harvey
Breacker	(James)	McDonough	Beaumont	Dreyer	Elstrup <sup>1</sup>	Preece	Dowie	Hughes	(Black)	[Rees]	[Harvey]
Breacker	James	(McDonough)	Beaumont	Dreyer	Elstrup <sup>2</sup>	Preece	Dowie	Hughes	(Rees)	[Harvey]	[Nogan]

## NEVER SAY DIE



READ ALL ABOUT IT  
LUTON TOWN FC  
OFFICIAL HANDBOOK 1990-91  
ON SALE NOW £2.50

## MAN IN CHARGE Ray Lewis (Great Bookham, Surrey)

Ray is a regional manager and is married with one daughter. He began refereeing in the Kingston District League and became a Football League referee in 1975. In 1989 Ray was appointed a FIFA referee. His hobbies are reading and all sports.



OFFICIAL SUPPLIERS TO:



Voucher No. 2



# STAR PERFORMER



**VAUXHALL** *Once driven, forever smitten*



VAUXHALL IS BACKED BY THE WORLDWIDE RESOURCES OF GENERAL MOTORS. CAR SHOWN CALIBRA 16V.

## VAUXHALL TEAM CHECK.

### LUTON TOWN

*Team Manager: Jim Ryan  
White Shirts, Navy Shorts*

- 1 Alec Chamberlain
- 2 Tim Breacker
- 3 Julian James
- 4 Darron McDonough
- 5 David Beaumont
- 6 John Dreyer
- 7 Lars Elstrup
- 8 David Preece
- 9 Iain Dowie
- 10 Ceri Hughes
- 11 Kingsley Black

Subs



**umbro**

Official Kit Sponsors



Official Ball  
Sponsors

### MANCHESTER UNITED

*Team Manager: Alex Ferguson  
Red Shirts, White Shorts*

- 1 Les Sealey
- 2 Denis Irwin
- 3 Mal Donaghy
- 4 Steve Bruce
- 5 Mike Phelan
- 6 Gary Pallister
- 7 Neil Webb
- 8 Paul Ince
- 9 Brian McClair
- 10 Mark Hughes
- 11 Clayton Blackmore

Subs

Referee: Ray Lewis (Great Bookham, Surrey) Linesmen: R.J. Pardoe (yellow trim) C.J. Proud (red trim).

**Designed and printed by Abacus Press, Berkhamsted, Herts.**