

# TOWN

# NOT

OFFICIAL PROGRAMME £1.20



Saturday, April, 28, 1990, Kick-off 3.00 p.m.

# CRYSTAL PALACE

BARCLAYS FOOTBALL LEAGUE DIVISION ONE

This match is sponsored by: Atlas Copco Ltd, Anglia Cleaning Ltd, Luton International Airport.



I N T H E



•Tim Breacker surges clear of Tony Adams on his way to setting up the Town's second goal for Kingsley Black in last week's 2-0 win against Arsenal.

## APOLLO SYSTEMS LTD.

0582 34928 - 481102

- ★ Electrical Installations
- ★ Industrial and Commercial
- ★ Maintenance ★ Fire Alarms
- ★ C.C.T.V. Installations
- ★ Suspended Ceilings
- ★ Office Partitions & Screens
- ★ Fireproof Curtain Walls

39B SHAFTESBURY RD, LUTON

## OGDEN & CLEAVER

320-328 Selbourne Road, Luton, Beds. LU4 8NY  
Tel: (0582) 597631.

The biggest selection of Wallcoverings in Luton.

Quality Paints by Dulux, Manders, Sandtex & Sadolin.

Glass cut to size

Wide selection of mirrors and other decorative items.

SPECIAL DISCOUNTS FOR LUTON TOWN MEMBERS

Part of the Manders Group



F R A M E



•Iain Dowie, who netted the opening goal against Arsenal, sets up another Town attack, (above) while (below) Black is caught guiding home his goal past Lee Dixon and John Lukic.



S O C C E R L I

N E 08 98 700 - 273

38p per min Peak  
25p per min off Peak





# The Rascal. A real half-tonner.

**BEDFORD RASCAL** 

BACKED BY THE WORLDWIDE RESOURCES OF GENERAL MOTORS



**Kenilworth Road Stadium**  
1 Maple Road, Luton, Beds LU4 8AW

#### **PRESIDENT**

Bertram Ward

#### **CHAIRMAN**

Roger Smith

#### **DIRECTORS**

T.W. Bailey, B. Cole, D. Evans M.P.  
C.J. Hudson, E.S. Pearson, H. Richardson J.P.  
D.G. Watson-Challis

#### **GENERAL MANAGER/SECRETARY**

Bill Tomlins

#### **TEAM MANAGER**

Jim Ryan

#### **HONORARY LIFE MEMBERS**

J. Richardson

#### **VICE PRESIDENTS**

R.L. Banks, C. Bygraves, C.J. Evans, G. Evans,  
E. Fountain, I.E. Holmes, R. Larkinson, R. Safranek,  
J.R. Smith, E. Waller

#### **HONOURS**

LITTLEWOODS CUP WINNERS 1987/88  
FA CUP FINALISTS - 1968-69  
LITTLEWOODS CUP FINALISTS - 1988-89  
SIMOD CUP FINALISTS - 1987-88  
CHAMPIONS - DIVISION 3(S) 1936-37  
CHAMPIONS - DIVISION 4 1967-68  
CHAMPIONS - DIVISION 2 1981-82

#### **LUTON TOWN HOTLINE**

##### **Match Tickets, Match Enquiries, Membership, Junior Hatters:**

Ring - Cherry Newbery,  
Ticket Supervisor - Luton (0582) 411622  
24 Hour Service - Luton (0582) 30748

##### **Advertising and Match Sponsorship:**

Ring - Wendy Grzybowska, Commercial Manager  
Luton (0582) 411622

**Stadium Hire/Special Events:** Ring - Mike Beevor,  
Special Events Manager Luton (0582) 411622

**Umbro Sportswear/Souvenirs:** Ring - Bev Tyler,  
Sales Supervisor Luton (0582) 411622

**Banqueting Function Facilities:** Ring - Peter Saul  
Catering Manager Luton (0582) 411622

**Promotions Office:** Lotteries - Ring John Cornall,  
Development Executive Luton (0582) 416976

**Soccerline:** Ring - 0898 700 273 (38p per min peak)  
(25p off peak)

##### **Club Office hours:**

8.30 am - 6 pm. Luton (0582) 411622 Fax: (0582) 405070

**Edited by: Robert Alexander Associates**

**PR and Media Consultants, Hitchin.**

**Pictures by: Apex Photography, Milton Keynes**

# RYAN'S



# REFLECTIONS

Every team has one match each season which it looks upon as the big one. For some it is a cup final, for others it is a cup tie against a much bigger club. For us it arrives today with the visit of Crystal Palace who will themselves be playing in the F.A. Cup final in a few weeks time. We know what is required of us. We have been involved in a race against the clock, with injuries and points, for several weeks. We proved, against Arsenal last week, that we have the ability and the temperament to succeed. Now, against quite different opposition, we must perform again if we are to retain our First Division status. At the time of writing, I am hopeful that Danny Wilson will be available after his injury last weekend. It has been diagnosed as a calf strain. Kingsley Black and Mick Kennedy should be available again too.

When I became manager, I made a conscious decision about the type of football I wanted the team to play each week and we have stuck with it. Even allowing for the situation we were in, I wanted to see a certain style of play and I believe it to be the most effective. The players have responded to my appointment and, as this is the last home programme this season, I would like to take this chance of thanking them for their efforts. I would also like to thank all those other football people involved in the scouting and compiling of reports on other teams. There are so many people involved in what happens behind the scenes each week in the build-up to a match it is impossible to mention them all by name. But I am grateful to them all. Everyone in the club has encouraged me and worked hard and I can only think of a couple of games in which we allowed our game to die away. I feel our supporters have responded well too. I have made no bones about asking for some extra vocal support and the results have been greatly appreciated in the dressing room. More than one player has spoken of this and I unashamedly ask for more again today. It really can make a difference. Thanks to you all.

*Jim Ryan*  
Team Manager



# Mailbag & Supporters News

Want to air your views?

Please write to: The Editor, c/o Luton Town FC., Kenilworth Road Stadium,  
1 Maple Road, Luton, Beds. LU4 8AW.

## Stewards in a stew!

Dear Sir

Whilst impressed by the efforts of the young dark haired fresh faced steward in trying to deal with fans who had moved from the enclosure to the rear of the main stand (Blocks A-B) during last week's match I cannot say the same for the 'senior' or 'supervisory' stewards who were summoned when the young man met with resistance.

During the first half of the match a rogue fan stood at the rear of the stand, a man who is one of a number I have

regularly seen there, who obviously declined to move back downstairs when asked to do so today. The senior steward who was summoned apparently had a good natured chat with the man and then indicated to him where he should stand. Once the senior steward had gone the man had the cheek to find himself a vacant seat in the main stand.

Whilst the fans who move up from the enclosure to the main stand particularly during bad weather are no more

than a source of irritation I believe the unwillingness of the senior and supervisory steward to support the young steward displayed a lack of courage and undermined what the young steward was somewhat courageously trying to achieve. This will only make him disinclined to act positively in the future should the need arise.

Yours faithfully

Bryan Lecoche.  
46 Waterloo Road,  
Bedford MK40 3PG.

## LUTON TOWN SUPPORTERS CLUB

Dear Supporter,

We are all hoping that Luton Town will still be a First Division club next season, but with two games to go including today's clash with Palace our fate remains in the balance. Recent performances have shown that whatever the outcome there has been no lack of effort from the players or management.

The club and all supporters should now look forward positively to whatever lies in store next season.

Supporters should recognise that every season in the First Division is a bonus for us given that we have to compete on gates which rarely exceed 10,000.

It has been apparent this season how difficult it is to replace experienced international calibre players like Foster, Donaghy, Hill, Stein and Harford.

Notwithstanding this, the club has proved that with careful husbandry and skill in the transfer market much can still be achieved.

If the worst happens and we are relegated, it is probable that the team can develop into a promotion-chasing side in the near future - particularly if our present support is maintained. We would be competing on a much more even footing if we go down.

But if we survive, every club in the First Division, with the exception of Wimbledon, will have bigger average gates than Luton even if the ground is full for every

match. Revenue will be lost the following year when the plastic pitch is taken up and replaced by grass. Consider, in addition, that the club is rarely featured on live television and it is easy to see the unequal fight we have faced in recent years.

We have enjoyed eight years of First Division so far and that great Wembley cup final success, a day which will live in all our memories for the rest of our lives. For this, I believe the club deserves our continued support now and next season.

I hope everyone will reflect on the good times we have enjoyed in the last decade and next season, whatever lies in store, will continue to provide great support. I encourage every Luton supporter to give the team a great final send-off at Derby next week whatever the result today. It is a chance to show appreciation of the success and the efforts of all the players in the last few months.

Let us look positively to the future and maintain our support whatever the outcome of these last two matches. It is easy to support a successful team. But now is when the support is really needed. Let us show that today and set up the prospect of a good future. Can another Manchester City result be achieved?

John Chapman  
Committee Member

## J. SAPSWORTH LTD

GLAZING REPAIRS - GLASS SUPPLIES

DECORATING SPECIALISTS

92 MARSH ROAD, LUTON, BEDS.

GLAZING & 24 hr EMERGENCY SERVICE 0582 573025

DECORATING 0582 597505

FAX 0582 492025

## EXECUTIVE MEMBERS

ABB ROBOTICS LTD

MR T ADAMSON

ADRIATIC ENTERPRISES LTD

ANACHEM LIMITED

BEDFORD COMMERCIAL VEHICLES

BERVALE MEAD INSURANCE

W J BILLINGTON LTD

BLAKEY ENGINEERING CO LTD

BROAD STREET PRINT

JSB BUSINESS FORMS

BALGUARD ENGINEERING

MR R BANKS

BEVENGRACE LTD

CAMBERWELL COPIERS

CHEF FOODS

CRANE & STAPLES SOLICITORS

CHAMBERLAIN WINDOWS

CAPITAL METALWORK LTD

CLARENDON HATS

MR T COATES

MR P COOPER

MR M CONNELL

COMPLETE CONTRACTS

COUNTRY PROPERTIES

DUPONT (UK) LTD

EVERGREEN SUPPLIES LTD

FILMERGRAPHIC PRESS LTD

FENNEMORES SOLICITORS

FLITWICK OIL

V G GREEN & SONS LTD

MR D HALES

HANDSCOMBE FINANCIAL AND  
INVESTMENT SERVICES

K W HARVEY & SONS LTD

E W HUDSON (HOLDINGS) LTD

B. HICKS & COMPANY

HUMBERGROVE INSURANCE  
SERVICES

HANS JURGEN (IMPORTERS) LTD

JOHN LAING CONSTRUCTION LTD

J M KEENAN LTD

MR P LAYCOCK

MILCUTT ENGINEERING LTD

NEAHURST LIMITED

OPELVALE GROUP

MR S PEARSON

F W PEARCE BUILDERS LTD

PREMIER BEARINGS

R B T GROUP

REYVEN (SPORTSFIELDS) LTD

RICHARDSON & BOTTOMS LTD

MARK JAMES SALVAGE

SHOREY'S TRAVEL

MR & MRS D SHERIDAN

SPACE DISPLAY SYSTEMS

SWIFTS OFFICE SHOP

TILDAL INVESTMENTS LTD

W S TYREMASTERS (DIVISION  
OF WEST & SELICK (TYRES) LTD)

VAUXHALL MOTORS

WALLSPAN BEDROOMS

WILTON TRUCK RENTAL

WOODWARD BUILDERS

ELECTROLUX LTD

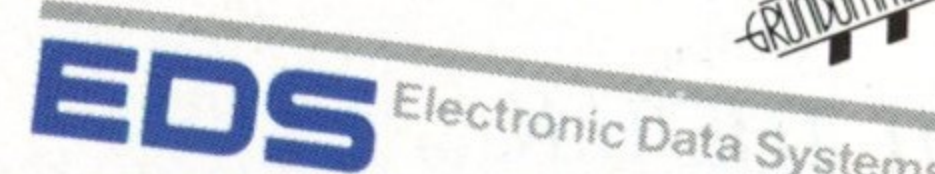
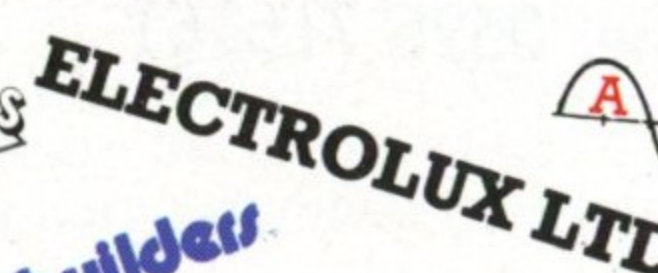
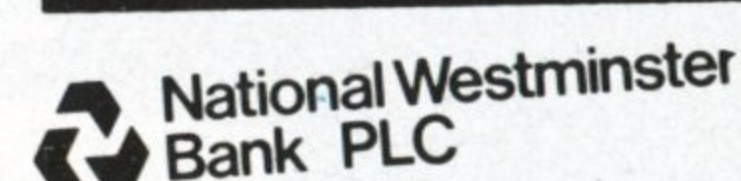
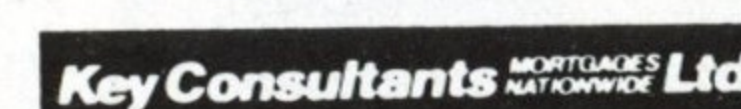
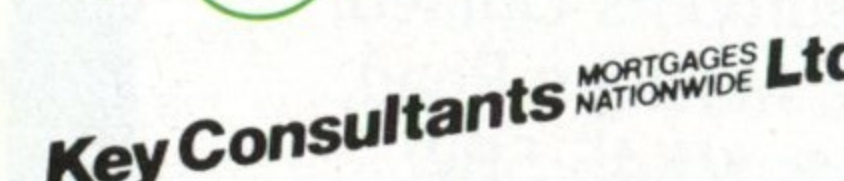
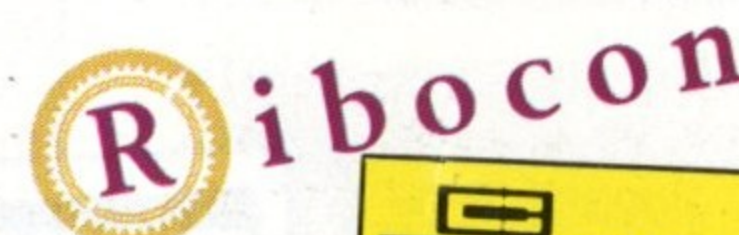
## SOCCERLINE

0898 700 273

38p per min Peak

25p per min off Peak

## EXECUTIVE BOX HOLDERS





# WE'VE ALSO MADE SOME CHANGES TO OUR LINE UP THIS SEASON

Kenilworth Road isn't the only place you can see a new line up this afternoon.

Just down the road in the Arndale Centre, and in our showrooms throughout the U.K., you can see the new additions to our own squad.

The Cameo Collection is making its home debut in what is undoubtedly the most attractive and unbeatable line-up in fitted bedroom furniture in the U.K.

And if that weren't enough you'll find that like Luton Town, we too have proved that you don't need to break the bank to put together a winning combination.

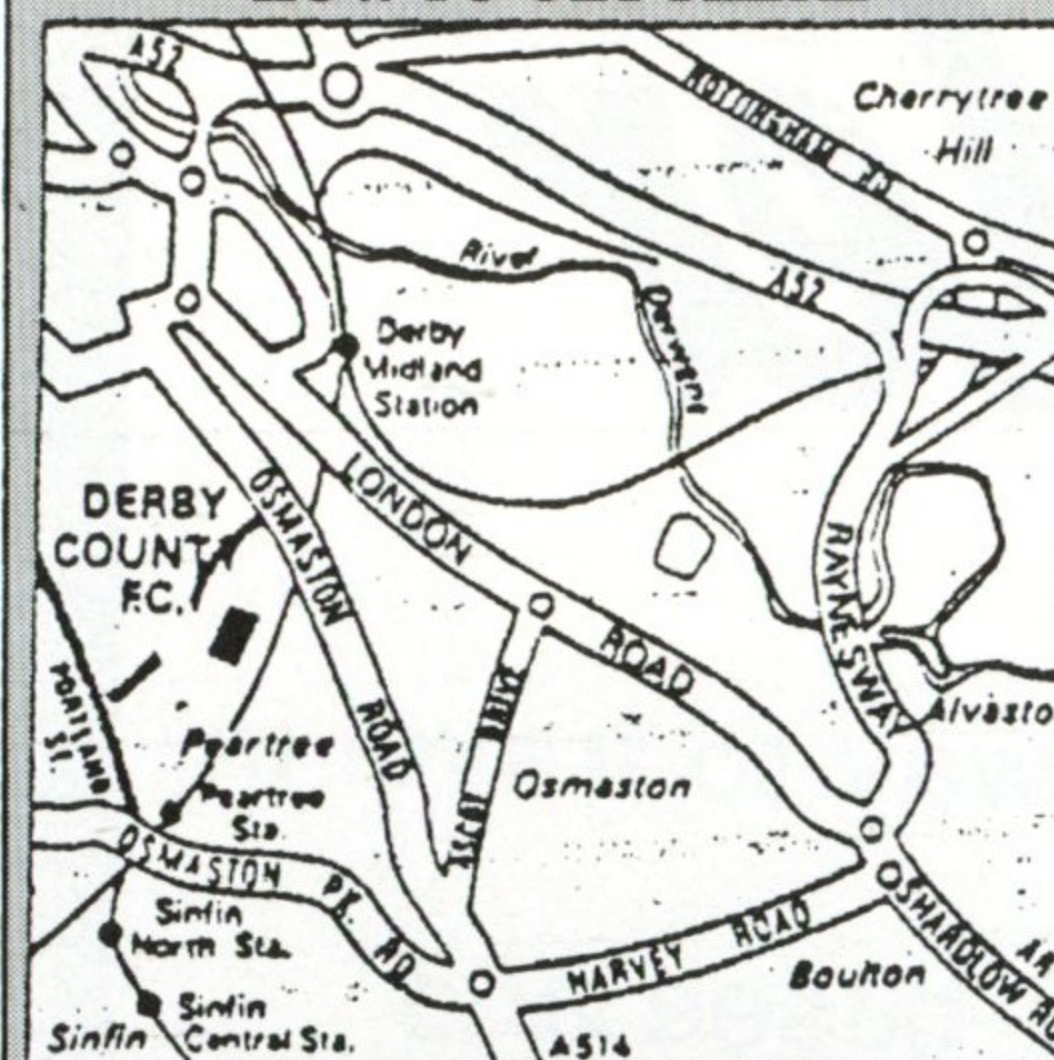


## Wallspan

Wallspan Bedrooms Limited,  
Head Office: Maulden Road,  
Flitwick, Beds MK45 5BW.  
Telephone: 0525 716161

SHOWROOMS THROUGHOUT THE U.K.

### HOW TO GET THERE



### Derby County v Luton Town Saturday, May 5, 1990

**By train:** The Baseball Ground is only 10 minutes walk from Derby Midland station and trains run frequently and directly from Luton. Derby have also introduced this season their own Baseball Ground halt for supporters travelling by rail. Please check times with British Rail or a travel agent.

**By road:** Take the M1 to junction 24 and then take the A6 to Derby. On the approach to Derby, take the A5111 ring road to the A514/Osmaston Road. Follow the Osmaston Road towards the town centre and then left into Shaftesbury Street for the Baseball Ground.

**Parking:** There are eight car parks within half a mile of the stadium and there is street parking.

### Luton Lions collection

Thanks to the generosity of our regular supporters, the Luton Lions club has broken its records again with bucket collections at Kenilworth Road this season. At five matches, a total of more than £2,800 was kindly donated by Luton Town fans and the money will be disbursed to a range of small local charitable needs.

One of the many people to have been assisted by the Luton Lions during the last winter was our own former player Bert Lutterloch to whom a small donation has been made. On behalf of the Lions and all the other charities involved in the collections, the club would like to thank the supporters for their generosity.

### Alan Hardaker Trophy

A new trophy will be presented by the Football League at tomorrow's Littlewoods Cup final at Wembley. It is the Alan Hardaker Trophy, named in memory of the 'man of the match' at the end of the final between Nottingham Forest and Oldham Athletic.

## INTERNATIONAL CALL-UPS FOR YOUNG TOWN QUARTET

Four of our young players have been rewarded for their efforts this season with international call-ups. Three Welshmen Ceri Hughes, Jason Rees and Kurt Nogan have been selected by the Wales under-21 squad to meet Poland and Neil Poutch has won similar recognition for the second time with the Republic of Ireland under-21 squad. For all four it is a great honour and a note of credit to both them and their club.



●International call-up: Kurt Nogan is one of four Town youngsters picked for international squads.

### ...AND THANKS ALL ROUND TO OUR MATCH DAY STAFF

As the season draws to a close, the board and full-time staff at the club would like to take this opportunity of thanking all the match day assistants who help to make each week run smoothly at Kenilworth Road.

All those who have been in to work at the club as match day assistants in their various capacities as stewards, gatemen, programme sales-staff, ground supervisors, police, hospital broadcasting staff deserve our thanks and, I am sure, the thanks of all our supporters also.

In a season of great change, I would like also to thank everyone who has shown their loyalty to the club and particularly the local media who have done their job fairly and always reported both sides of the coin.

Finally, my thanks to the Supporters Club and their chairperson for their support this season and may I take this final opportunity to urge those supporters who have not already done so to buy their tickets for the Presentation Night which takes place at the Coliseum tomorrow night (Sunday). Tickets will be on sale at the LTSC kiosk after this afternoon's match.



# Easy Rider

These tickets offer you a low cost way to travel in  
Luton and Dunstable, on both our buses and  
Hoppanstopper minubuses !

Easy Rider	Adult	Child up to 16 years
7 day	£ 8.70	£ 5.80
14 day	£ 16.50	£ 11.00
28 day	£ 30.50	£ 20.30
3 month	£ 86.50	£ 57.65
6 month	£162.00	£108.00
Annual	£300.00	£200.00

Buy your tickets at Luton Bus Station,  
Dunstable Queensway Hall or any Post Office  
in the local area !

*The more miles you go, the more you SAVE !*

For further details, telephone: (0582) 404074

N.B. Prices correct at time of going to Press.

## JUMPING JULIAN

Julian James outleaps Kevin Campbell of Arsenal to head clear during last week's 2-0 win here at Kenilworth Road.





**ALL REASONABLE OFFERS CONSIDERED!**

# PROPERTY AND BASE PLOTS SPRING SALE

PROPERTY AND PLOTS AVAILABLE AT BOTTOM MARKET PRICES!!!

- FOR SALE**
- PART COMPLETE**  
Part finished homes for you to make into a Dream Home!
- TOP QUALITY BUILT**
- BASE PLOTS**  
All with detailed planning consents!
- EXTERNALLY COMPLETE**  
Outer structure with roof, most of the hard work already done!

**COME ON SITE TO OUR VIEW HOUSE FOR DETAILS - BRING THE KIDS!**

**WINE/CHEESE - POP/BALLOONS**

**SATURDAY 21<sup>ST</sup> - SUNDAY 22<sup>ND</sup> APRIL 1990 AT WIGMORE LUTON**

**VIEWING FROM 10.00am-4.00pm**

**TYPICAL STYLE**

Hedley Rise, Off Crawley Green Road  
Wigmore Park, Luton

**Tel: NOW 0462 491188**

**HOMESMITH**  
CONSULTANTS  
Group Self-Build Housing Management

## BOX OFFICE UPDATE

### BARCLAYS LEAGUE DIVISION ONE Derby County v Luton Town Saturday, May 5, 1990. Kick-off 3.00 p.m.

Tickets for seats at £8 are available from the ticket office in Kenilworth Road or from Derby on the day. Standing tickets are available for £5 at Derby on the day of the match.

FULL DETAILS OF ARRANGEMENTS FOR MEMBERSHIP AND SEASON TICKETS FOR 1990 - 1991 ARE ON PAGE 29 OF THIS PROGRAMME.

### FORTHCOMING MATCHES AT KENILWORTH ROAD

**Ovenden Papers Football Combination**  
Luton Town v Charlton  
Tuesday, May 1, 1990  
Kick-off 3.00p.m.

**Ovenden Papers Football Combination**  
Luton Town v Chelsea  
Tuesday, May 8, 1990  
Kick-off 2.00p.m.

**Women's Lacrosse International**  
England v Wales  
At Kenilworth Road Stadium  
Saturday, May 19, 1990, 2.30pm.

**Luton News Sports Day**  
Including charity match  
Eastenders v ex-Luton Town XI  
Sunday, June 10, 1990, 2pm.

### POUNDSTRETCHER HOCKEY LEAGUE CUP FINAL

The Poundstretcher League Cup finals take place here at Kenilworth Road on Sunday, May 6, 1990. The Division Two cup final featuring St Albans, who meet Neston, starts at 11.30 am and the Division One final between Nationwide Anglia Cup holders Havant and the Poundstretcher League champions Hounslow starts at 1.35 pm.

Both matches are sure to offer plenty of exciting top-quality hockey and a host of international stars will be taking part including England's Russell Garcia of Havant.

Tickets for what promise to be a tremendous double-header of entertainment are available from our Ticket Office in Kenilworth Road. The prices are: Main Stand - adults £5, juniors and senior citizens £2; Oak Stand - adults £2, juniors and senior citizens £1.

### LOCAL CUP FINALS AT KENILWORTH ROAD

A host of cup finals have been scheduled for the Kenilworth Road Stadium during the next few weeks and our pitch hire office had been inundated with bookings. The following finals are due to take place in the next few weeks:

April 29 - 10 am and 12 noon  
April 29 - 2 pm to 6 pm  
May 13 - 12 noon and 2 pm  
May 20 - 12 noon and 2 pm  
May 20 - 6 pm

Whitbreak Poacher League Cup finals  
East Anglia Youth Competition  
South Beds Sunday League finals  
South Beds Sunday League finals  
Bovis Homes Chiltern Youth League finals

**CALL  
SOCCERLINE  
ON**

**0898 700 273**  
38p per min Peak  
25p per min off Peak

*For all the latest news and  
views from Luton Town*

# Herald & Post

Britain's Free Newspaper





by BILL TOMLINS

# THE TOWN

## FREE RENEWALS FOR ALL MEMBERS AS NEW SEATING IS PLANNED

Good afternoon, a warm welcome and congratulations to Crystal Palace on their success in reaching the F.A. Cup final.

I have made it clear in the past and so has our board of directors that we are not entirely in agreement with the recommendation that all our stadia should become all-seated by 1994, as included in the Taylor Report.

However, the report's recommendation have now become requirements and with the likely availability of financial support through the Grounds Improvement Trust, it would seem unnecessary to delay the process of having to convert our Kenilworth Stand terracing to seating.

So, subject to the funds being available, the club proposes to install a new and attractive seating section as the first stage of the new accommodation at the Kenilworth Road end and have it in place before the start of next season.

As part of the price structure, outlined on page 28 of this match day programme, the club has decided to give existing Oak Stand season ticket holders first option on the proposed new seats in the Kenilworth Stand.

The decision to put in only half of the seating at the first instance does mean there will be a reduced standing area in the Kenilworth Stand next season. This in turn may mean that for popular matches there may not be enough room to accommodate all those who wish to stand.

We have structured the pricing to give some comfort of course to both the Oak Stand fans who may move to ensure their seats for cup-ties and also the existing Kenilworth Stand supporters who sometimes may be required to sit next season, if all the standing accommodation is filled.

The board has also chosen to ensure all 22,000 of our members are given the opportunity to continue expressing their support for the club next season by renewing memberships free of charge.

Full details to all the season ticket and price structure arrangements for next season are on page 29 of this match day programme.

Finally thank you to all our supporters for their loyalty this season when our attendances have been up on average by about 1000 per match.

## 200 UP!



• **Tim Breacker made his 200th league appearance for the Town last weekend and marked it with an excellent performance against Arsenal. Congratulations and thanks, Tim.**

## KINGSLEY PUTS LUCKY 7 WINNER IN THE PICTURE

• **Lucky winner:** Mr. G. Innes of Houghton Regis is pictured collecting one of the many televisions won through our highly-successful Lucky 7 Lottery. The presentation was made by our popular Northern Ireland international winger Kingsley Black at the Harvest Home public house.



• **Top Hatter:** Tim Breacker was our sponsors man of the match for his determined performance against Arsenal last week. Tim is pictured receiving a well deserved bottle of bubbly.



• **Forecast winner:** Jason Rees was on duty in our match sponsors' lounge last week and he is pictured presenting an autographed ball to our match forecast winner M. Thomas.



• **Little and large:** Mascot Mathew Brehnan needed a helping hand from referee Allan Gunn last week when he lined up for this pre-match picture.

## CAPTAIN'S DIARY



DANNY WILSON

### FINGERS CROSSED

I have had my fingers crossed this week that I'll be able to shake off the calf injury I picked up last weekend against Crystal Palace. It is the sort of game no-one wants to miss and I am really hopeful that I will make it.

I can see no reason why, if we reproduce the sort of form we showed against Arsenal, we cannot win again. I know we cannot rely on any other teams to do us favours, but a win today would give us a chance of doing something on the last day next week. And, of course, we all know that nothing else will do really.

### Well done, Tim

Last weekend saw Tim Breacker clock up his 200th league appearance for the club and what a way to do it! I only hope his next 200 are just as good as the first double century have been. He is always a credit to himself and the club.

It was a good all-round team display which earned the points last week and that included some great performances by the younger lads. Jason Rees, for one, has done very well and he always listens – when he's not talking all the time himself. You can tell when he is in for training...from down the road. Enjoy the match.



# 1st Team ACTION

## GUNNERS SHOT DOWN IN STYLE Luton Town 2 Arsenal 0

Two fine goals by Iain Dowie and Kingsley Black secured all three points and a First Division lifeline for the Town last Saturday when they overcame Arsenal with a stylish victory at Kenilworth Road. On a day of great pressure and tension, all 13 Luton players deserved great credit for a relaxed and skilful performance which fully merited a memorable triumph and the first clean sheet since Jim Ryan took over as manager in January.

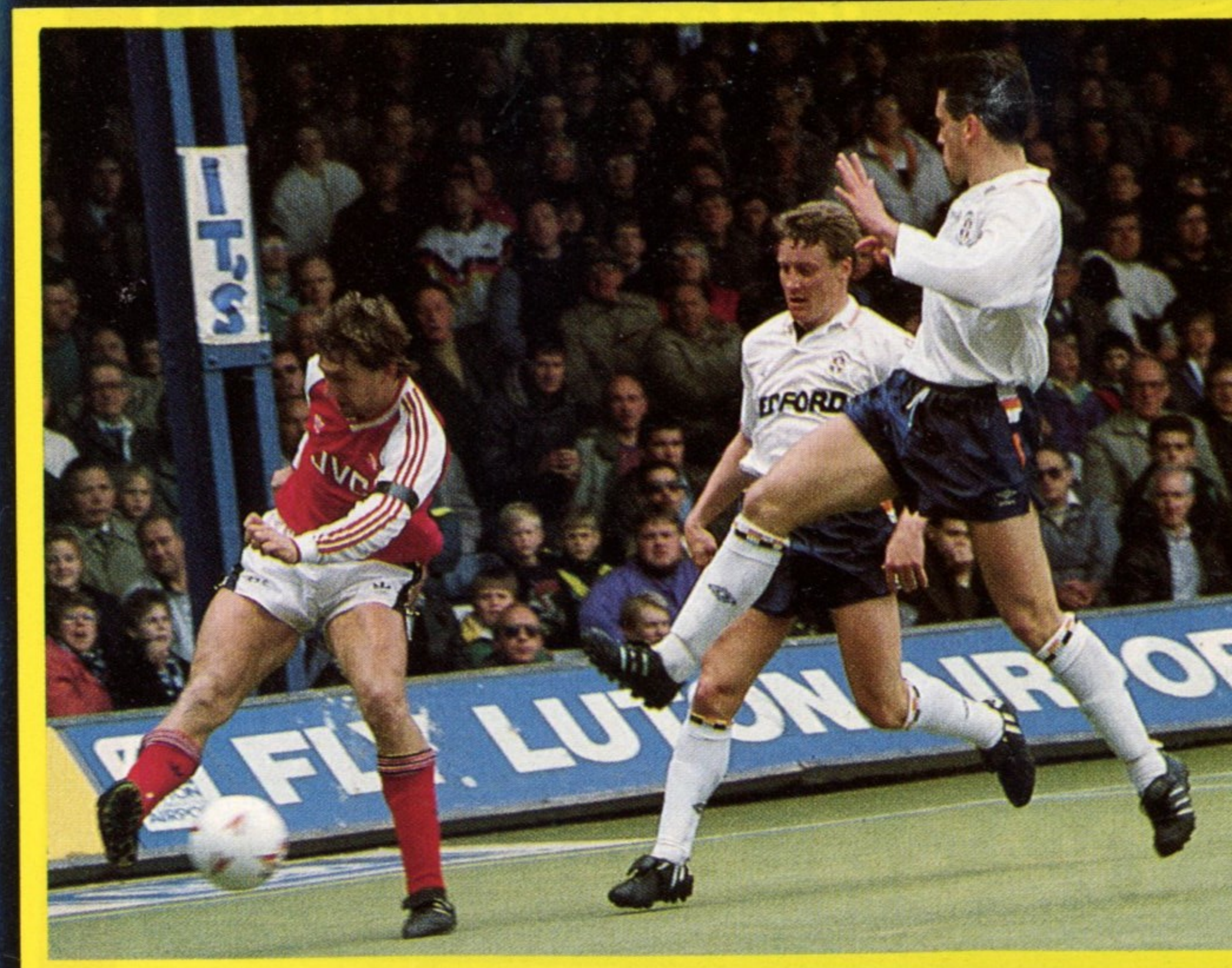
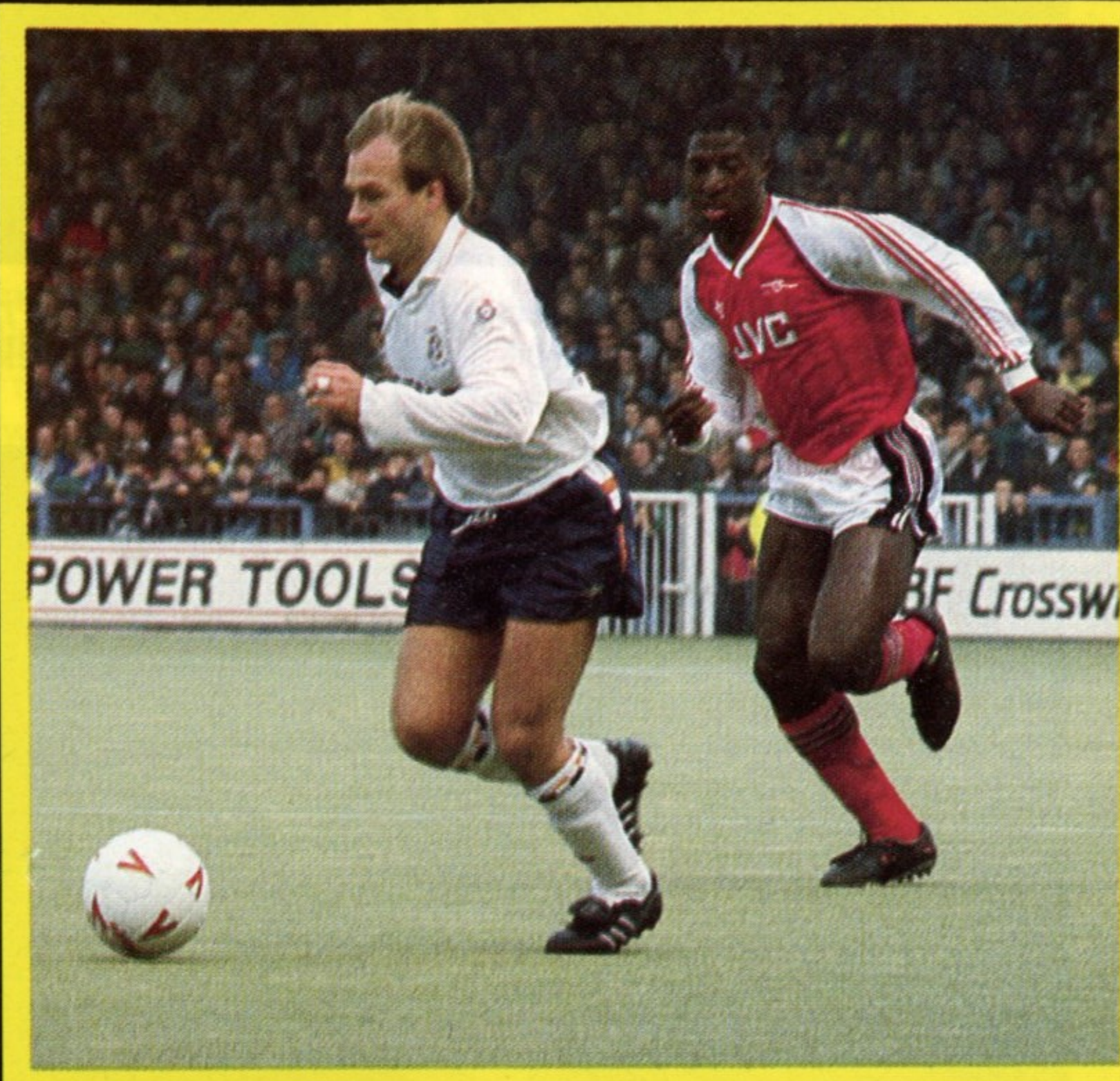
Northern Ireland international striker Dowie opened the scoring after 42 minutes when, from a David Preece cross, he robbed Nigel Winterburn as he turned and then guided an accurate left-foot shot beyond Lukic for a classic poacher's goal. The second goal came after 59 minutes when Tim Breacker embarked on a tremendous run, exchanged passes with captain Danny Wilson, and crossed for Black to score from six yards.

Arsenal raised some response for a spell, but the Town, with David Beaumont back at the heart of the defence, weathered the storm with cool and mature defending and one athletic save by Chamberlain. The only blot on an otherwise perfect day's work came 10 minutes from time, however, when Wilson was carried off with suspected calf and ankle injuries, leaving the Town to survive with only 10 men.

**Teams:** Luton Town – Chamberlain, Breacker, McDonough, Beaumont, James, (Johnson 72), Dreyer, Wilson, Rees, Dowie, Preece, Black (Elstrup 67).  
Arsenal – Lukic, Dixon, Winterburn, Thomas, Bould, Adams, Davis, O'Leary (Rocastle 67), Smith, Merson (Hayes 67), Campbell.

**Referee:** A. Gunn (South Chailey, Sussex).

**Attendance:** 11,595.



David Preece was one of the stars of a great all-round team performance last week. David is pictured moving forward to set up an attack while John Dreyer appears to be feeling the strain in the Arsenal goalmouth. Iain Dowie, Jason Rees and Danny Wilson are also captured in action by our club photographer Josh Levy.





**The Hottest NEWS**  
**The Best MUSIC**  
**The Hot FM**  
 in Herts, Beds & Bucks  
 24 Hours a day!

**97.6**  
**828**  
**Chiltern Radio**



**High Power Pressure Washers:**  
**Sales, Hire, Service Repairs,**  
**Spares, Maintenance Contracts.**

SPECIALISTS IN SALES & SERVICING OF  
 PRESSURE WASHERS  
 (Most makes repaired)

Main distributor for 'Warwick'

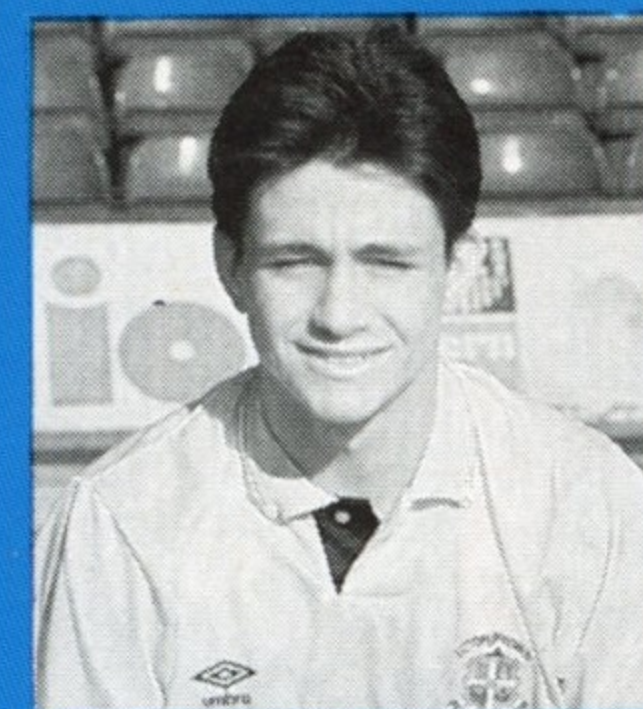


**JR Power Cleaning**

11 Sunbeam Rd., Woburn Rd. Ind. Est., Kempston,  
 Bedford MK42 7BZ. Fax: (0234) 840110

**0234 840838**

**Top HATTER**



## CERI HUGHES

### CERI HUGHES FACT FILE

Born: Rhondda Valley, Wales. 26.2.71  
 Source: Spotted by scout Cyril Beech in South Wales.  
 Invited to Luton for trials as a 10-year-old and became  
 apprentice in 1987.  
 League debut: Aston Villa v Luton Town  
 10.3.90 (2-0)  
 Previous clubs: Llwynypia Boys Club  
 Signed professional: July 1989  
 Most memorable match: Debut v Villa  
 International honours: Wales youth and u-21

### Bridging the gap

Midfielder Ceri was handed one of the toughest of all possible debuts in the First Division this season when he was asked to mark England star David Platt at Villa Park against the high-riding title-chasing Aston Villa team in March. It is a credit to 19-year-old Ceri's character and determination that he stuck to his task well on a day when he had to adjust to the pace of the game at the top level.

"He is a good player and he is very quick," he admitted. "He made a lot of runs into the box and I found the pace of the game quite different. There is a big gap between the reserves and the First Division and I really noticed that. But it was a great experience for me."

Born in South Wales, Ceri first came to Kenilworth Road as a 10-year-old triallist during his school holidays. It is a tough long round trip for even the most football-crazy boy and Ceri admitted there were times when he felt homesick. But he stuck it out.

"Sometimes I felt it a lot, but I loved my football so much and I felt very happy at the club and in the town. I have always enjoyed my life with Luton Town and I am really looking forward to next season when I hope to challenge for a first team place."

Ceri is not the only sportsman in his family. His older brother David also plays football, but after a trial at Luton, he did not make the grade. His younger brother Darren, 16, is a British table tennis champion and recently retained as Welsh table tennis champion.

Tennis, however, and not table tennis is Ceri's chief recreational sport outside football. "It helps to keep you fit and it is very good for reflexes and mental fitness. You have to concentrate," he said. "I have played a few times against our physio Dave Galley and I have always beaten him! Now I am looking forward to a game against Marvin Johnson who also plays tennis."

Ceri believes tennis is much better for young player than golf which explains why he has chosen the game and how dedicated he is to his own profession. "I am an all-round midfield player and I like to get forward into the attack and also to make things happen and set things up in midfield."

"I have played a lot of my football at Luton with Jason Rees. He comes from the next valley in Wales and he is a good player. He has done well since he got into the first team and I would like to get in and play with him next season. He has done well".

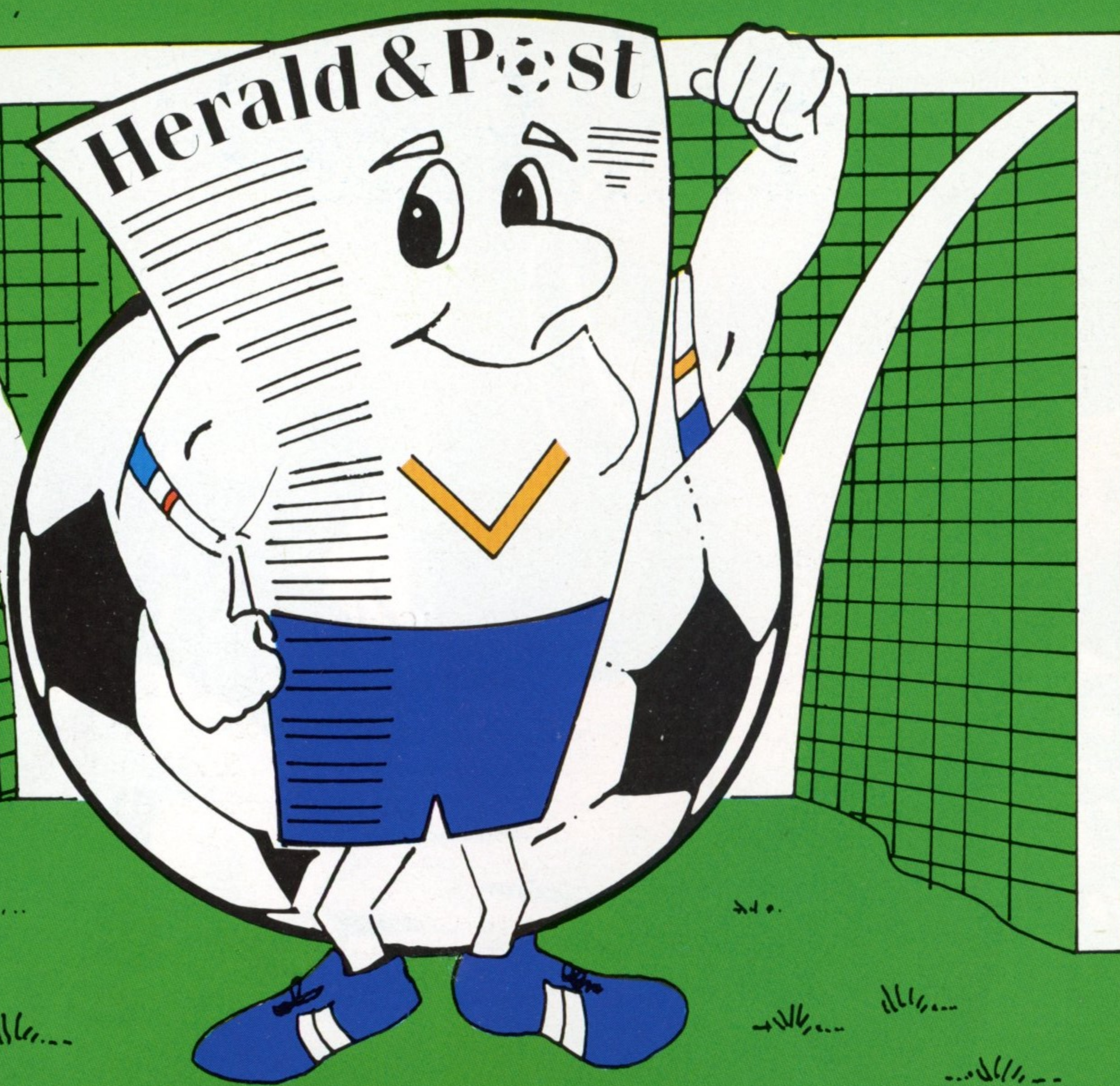




**CERI HUGHES**



# JOIN THE WINNING TEAM



## Herald & Post Line-up

**READ THEIR NEWS AND VIEWS EACH WEEK IN**

### LUTON & DUNSTABLE

Danny Wilson, Kingsley Black, Lars Elstrup

### BEDFORD

Tim Breacker

### MILTON KEYNES

Alec Chamberlain

### STEVENAGE/HATFIELD

Richard Harvey, Iain Dowie

### AYLESBURY

Marvin Johnson

### TRING

Julian James

### LEIGHTON BUZZARD

David Preece

### ST ALBANS/HARPENDEN

Darron McDonough, Kurt Nogan

### HEMEL HEMPSTEAD

Lars Elstrup

**The Best for News and Sport** Tel: LUTON 38981  
**The Best for Advertising** Tel: LUTON 401234  
**Britain's Free Newspaper THE Herald & Post**



# BARCLAYS

## Junior Hatters

**6-A-SIDE FUN DAY  
PLANNED FOR  
JUNE**

- The win last Saturday against Arsenal has given us slender hopes of survival. As Sheffield Wednesday went down 1-0 to QPR. It has left us three points behind Sheffield with two games to play. It looks like a tight finish.
- Today we give a warm welcome to the Junior Eagles of Crystal Palace whom some of our Junior Hatters have been playing football with this morning. I hope that you all had a good time. The Junior Eagles are joining us for today's game at the invitation of our Junior Hatters.
- I would like to congratulate Crystal Palace on reaching the final of the F.A. Cup.
- Last Saturday, when you entertained Arsenal, I was told that the football that was played was very good. The under-11 team won their match 4-1, but it was end-to-end football in the over-12's, as they lost 8-7, with Arsenal scoring the winning goal with 36 seconds left on the clock!
- As I said in last week's programme, I can now let you know all about the six-a-side Fun Day that I have planned. It is on Sunday, June 17th and it is for two age groups - under-12 and under-15 (on this day of competition) with ten players in each team.
- The team will be required to arrive at 10.00 a.m. with the first matches being played at 10.30 a.m. It is expected that all matches will be over by 5.00 p.m. You will be playing against teams like Watford, Millwall, Charlton, Arsenal, Southampton, Crystal Palace, Aston Villa, Norwich, and Chelsea.
- If you would like to play in this Fun Day call in to the Sports Shop today after the game and put your name down.

**Kingsley Black.**

### LUCKY NUMBERS

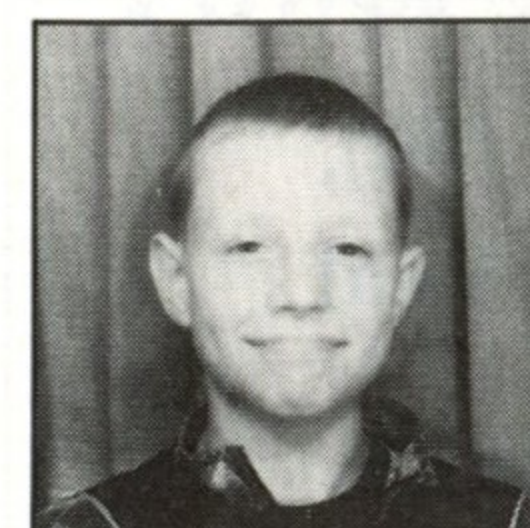
Today's Lucky Junior Hatters membership number is 191432 - Jessica Bowman.

She gets two free tickets to one of our home games next season.

The other lucky number out of the draw this week as Michael Palmer. Congratulations, Michael, you have won a sports bag sponsored by Spearman International.

Have a good day and we all look forward to seeing you next season. Thank you for your support - and keep up all the vocal effort today.

### MASCOT

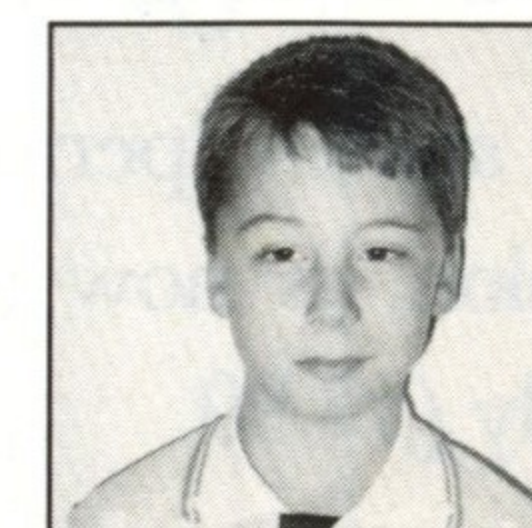


Kevin Boyle

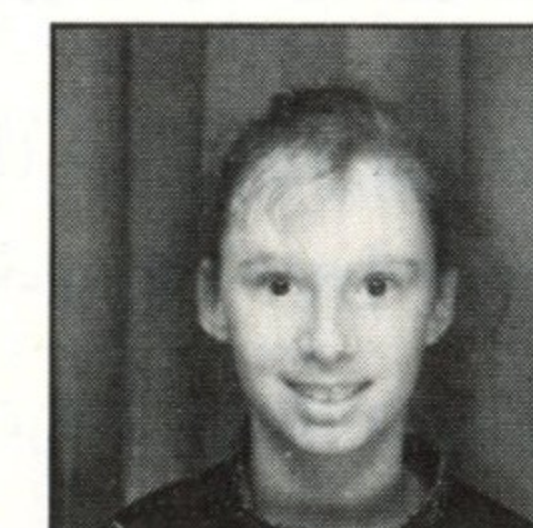
### ESCORTS



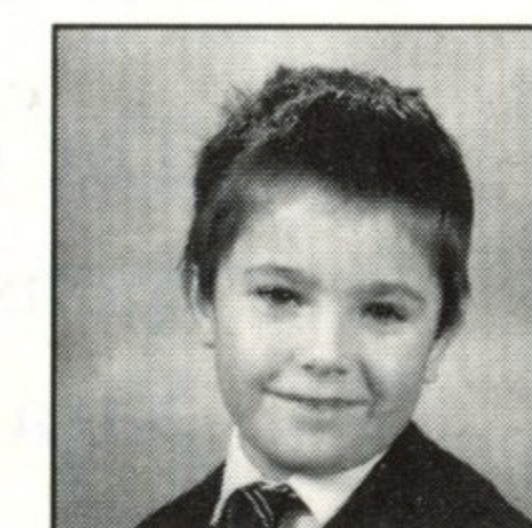
Peter Hercock



Mark Photiades



Lorraine Hill



Robert Chamberlain



**The Hottest NEWS**  
**The Best MUSIC**  
*24 Hours a day!*



# LUTON TOWN 1989-1990



The official film of the season  
Volume Two: October 21 to January 13

Sponsored by

**Xtra-vision**

## XTRA-VISION ON THE BALL

The official film of the season (period Oct. '89 - Jan. '90), sponsored by Xtra-vision, is now available at your local Xtra-vision store for only £13.99.



**YOUR VERY OWN MOVIE CHANNEL**

Luton: 45 Park Street, Luton Hitchin: 6/7 Market Place, Hitchin, Herts

Wigmore: Unit 8, Wigmore Shopping Centre, Luton



BY WENDY GRZYBOWSKA

## COMMERCIALLY

**SPECIAL THANK-YOU TO ALL OUR  
SPONSORS, ADVERTISERS AND ALL  
COMMERCIAL SUPPORTERS**

A very special warm welcome today to our match sponsors Atlas Copco Ltd, Anglia Cleaning Ltd and Luton International Airport.

Atlas Copco is one of the world's leading companies in the field of compressors, mining and construction equipment, industrial tools and plant automation.

For over 70 years Atlas Copco has been supplying British Industry with an ever-changing list of products and services.

The company based in Hemel Hempstead, supplies over 3,000 standard products complete system solutions, engineered products and services to more than 250,000 registered customers through out the world.

Anglia Cleaning Ltd, based in Huntingdon carry out contracts in areas such as Hertfordshire, Bedfordshire and Cambridgeshire.

Luton Airport are again supporting the club and

likes all of us hoping for three points today.

Our match ball sponsors today are Modplan Preservation, Established in 1984 by Clive Batcheler and Ken Winch. Initially a refurbishment contractor, working for local authorities, the company's activities have now grown to include dampproofing timber treatment, 'parmarock' insulation systems, extensions and new housing development.

Our match day boxes have been taken today by Roger Mahoney of Multiple Press based in Leighton Buzzard and Jack & Gordon Sapsworth of J. Sapsworth Ltd. We hope all our sponsors today enjoy their afternoon.

I would also like to take this opportunity to give a big thankyou to all our sponsors, advertisers, box holders and club suite members for supporting the club and look forward to seeing you all again next season.

**Atlas Copco**

**Power For Productivity**

Compressed air and  
pneumatic equipment specialists

Atlas Copco (GB) Limited  
Swallowdale Lane, Hemel Hempstead,  
Herts HP2 7HA.  
Telephone: (0442) 61201  
Fax: (0442) 214106

**READ THIS, AND YOU'RE ALREADY  
CLOSER TO LUTON AIRPORT**

Brussels will be the latest addition to our rapidly growing Scheduled Services timetable that currently includes Amsterdam, Maastricht, Belfast (Aldergrove & Harbour), Dublin, Cork, Galway, Isle of Man, Mahon, Malta, Malaga, Tenerife, Waterford, Jersey, Guernsey, Knock, Shannon, Kerry and Leeds/Bradford, with more to be added soon.

All aimed at providing your business customers with a range of key destinations and level of service worth a closer look.

**LUTON  
international  
AIRPORT**

*Close to you*

LUTON INTERNATIONAL AIRPORT, LUTON LU2 9LY.  
TELEPHONE: (0582) 405100. TELEX 826409. PRESTEL 34470.



OVENDEN PAPERS FOOTBALL COMBINATION 1989/90

Date	Opponents	Result	Date	Opponents	Result
1989/90		F-A	1990		F-A
Aug 19	Arsenal	6-1	Jan 10	Oxford	0-3
Sept 2	Reading	2-0	Jan 13	Wimbledon	3-4
Sept 9	Tottenham	0-4	Jan 16	Portsmouth	2-3
Sept 23	Southampton	1-0	Jan 24	Dunstable (BPCSF)	0-0
Sept 30	Ipswich Town	3-2	Jan 27	Brighton	5-1
Oct 10	Stotfold (BPC1)	4-4	Jan 30	Dunstable (BPCSF)	3-0
Oct 20	Norwich City	0-2	Feb 13	Chelsea	2-2
Oct 28	Watford	3-3	Feb 17	Oxford	3-0
Oct 31	Swindon	0-2	Feb 21	Fulham	3-0
Nov 7	Millwall	0-0	Mar 1	Crystal Palace	2-1
Nov 11	West Ham	1-1	Mar 3	Southampton	2-3
Nov 14	Stotfold (BPC1R)	5-0	Mar 10	Swindon Town	2-2
Nov 25	Fulham	5-0	Mar 13	Wimbledon	1-1
Nov 29	Brighton	1-2	Mar 21	Ipswich	0-2
Dec 2	Watford	1-1	Mar 27	Arlsey (BPCF1)	5-3
Dec 12	Charlton	0-1	Apr 3	Portsmouth	1-4
Dec 16	Norwich	0-2	Apr 5	Arlsey (BPCF2)	0-1
Dec 19	Tottenham	1-0	Apr 7	QPR	4-3
Dec 22	Vauxhall Motors (BPC2)	2-1	Apr 11	Reading	1-3
Jan 2	QPR	2-4	Apr 18	Crystal Palace	3-2
Jan 6	West Ham	2-2	Apr 21	Arsenal	1-3
			Apr 24	Millwall	1-2
			May 1	Charlton	
			May 8	Chelsea	

BPC = Bedfordshire Premier Cup

APPEARANCES AND GOALSCORERS

	Football Combination		Beds Premier Cup	
	Aps	Gls	Aps	Gls
Allpress	23(2)	1	5(1)	-
Beaumont	3	-	1	-
Brown	2(4)	-	(2)	-
Cobb	21(7)	6	5(1)	2
Cooke	16	4	2	-
Crawshaw	16(5)	4	3	2
Dowie	4	2	-	-
Elstrup	5	6	2	-
Gray	18	7	3	2
Harvey	8	3	-	-
Hughes	25(2)	2	4	2
Jackson	9	-	1	-
James	9	1	1	-
Johnson M	10	1	2	-
McDonough	6	-	3	-
McGonagle	2(6)	1	-	-
Nogan	19(3)	6	2(1)	3
O'Brien	5(1)	1	1	-
O'Sullivan	6(7)	1	-	-
Pembridge	26(2)	1	3	1
Petterson	22	-	3	-
Poutch	25(2)	1	4(1)	-
Rees	18(2)	2	4	2
Rodger	5	-	-	-
Salton	13(4)	2	-(1)	-
Scott	32(1)	2	6	-
Sealey	15	-	3	-
Telfer	3(8)	1	1(2)	-
Tighe	19	4	2	-
Williams S	11(1)	1	-	-

Also appeared: Campbell, Cooper, Farrell, Gillard, Gormley, Harford, Lawford, Richards, Rosenthal, Rutherford, Thompson, Shanley. Also scored: Rosenthal 3, Farrell, Harford 1.



• Paul Telfer: One of our most promising young players.

OVENDEN PAPERS FOOTBALL COMBINATION

	P	W	D	L	F	A	Pts
Arsenal	36	24	6	6	78	49	78
Tottenham Hotspur	36	23	6	7	89	45	75
Chelsea	35	21	6	8	74	42	69
Millwall	37	19	11	7	56	35	68
Wimbledon	37	18	9	10	66	44	63
Norwich City	35	18	7	10	63	40	61
West Ham United	36	16	7	13	78	57	55
Oxford United	35	14	9	12	66	53	51
Portsmouth	34	12	12	10	43	46	48
Swindon Town	37	15	3	19	58	67	48
Brighton & Hove Albion	35	14	6	15	39	62	48
Luton Town	35	12	8	15	63	61	44
Ipswich Town	34	12	4	18	55	64	40
QPR	33	12	4	17	55	79	40
Reading	35	10	7	18	55	84	37
Crystal Palace	33	9	9	15	42	45	36
Southampton	36	8	12	16	43	58	36
Charlton Athletic	34	9	6	19	43	64	35
Watford	34	8	8	18	55	77	32
Fulham	35	4	6	25	22	83	18

SOUTH EAST COUNTIES LEAGUE

Division Two 1989/90

Date	Opponents	Result	Date	Opponents	Result
Aug 19	Crystal Palace	0-4	Dec 9	Leyton Orient LC3	3-2
Aug 26	Tottenham	2-0	Dec 12	Arsenal (SJFC3)	0-4
Sept 2	Reading	1-0	Dec 16	Brentford	0-0
Sept 9	Reading (LC)	2-2	Jan 6	Crystal Palace	1-4
Sept 13	Aston Villa (SJFC1)	1-0	Jan 13	Tottenham	4-2
Sept 18	Reading (LC) (R)	3-2	Jan 20	Reading	1-1
Sept 23	Northampton T	1-0	Jan 27	Northampton T	1-1
Sept 30	Southampton	2-2	Feb 3	Bristol Rovers	0-3
Oct 7	Swindon Town	2-1	Feb 17	Bristol City	2-5
Oct 14	Bristol Rovers	2-2	Feb 24	Brighton	1-1
Oct 21	Norwich City (LC)	4-1	Feb 27	Brighton (LCSF)	0-2
Oct 28	Chelsea (SJFC2)	1-0	Mar 3	Wimbledon	0-2
Oct 28	Bristol City	1-0	Mar 10	Colchester Utd	0-5
Nov 11	Bournemouth	3-0	Mar 17	Swindon Town	4-0
Nov 18	Wimbledon	1-1	Mar 24	Bournemouth	1-0
Nov 25	Aldershot	3-3	Mar 31	Aldershot	0-2
Nov 28	Arsenal (FAYC2)	2-2	Apr 7	Oxford	2-1
Dec 2	Colchester	1-1	Apr 10	Southampton	2-0
Dec 6	Arsenal FAYC2R	2-4	Apr 14	Brentford	2-3
			Apr 21	Brighton	2-1
			May 5	Oxford	

APPEARANCES AND GOALSCORERS

	SEC Lge		SEC Lge Cup		SJFC	
	Aps	Gls	Aps	Gls	Aps	Gls
Brown	21(2)	9	5	2	3	-
Campbell J	25(3)	6	3	1	2	-
Cooper	26	2	2(1)	-	2	-
Gillard	12(1)	3	3	-	1	-
Gormley	20(6)	6	3(2)	2	1(2)	1
Hancock	14	-	1	-	-	-
Jackson	17	3	5	1	3	1
Lawford	15(8)	1	3(1)	1	(2)	-
McGill	20(1)	-	5	-	3	-
McGonagle	23	3	4	1	3	-
Murray	4(7)	1	-	-	-	-
Newman	4(1)	1	-	-	1	-
Noland	5(2)	-	1(1)	-	-	-
O'Sullivan	15(1)	3	5	1	3	-
Richards	5	-	-	-	-	-
Rogers	4(1)	-	(1)	-	1	-
Rodger	-	-	-	-	-	-
Rutherford	7(7)	-	2(1)	1	2	-
Salton	18	1	3	1	2	-
Sutton	3(2)	-	-	-	-	-
Telfer	22	-	5	1	3	-
Thompson	22(2)	1	1(2)	-	(2)	-
Watkins	15	-	3	-	2	-

Also appeared: Brading, Campbell M., Carter, Denham, Dibley, Elliott, Hawkes, Heath, Holtham, Kenny, Meldrum, Tilly, Uddin, Woods.

LATEST LEAGUE TABLE

	P	W	D	L	F	A	Pts
Crystal Palace	25	20	4	1	58	17	44
Oxford United	23	16	2	5	57	26	34
Southampton	28	13	8	7	41	33	34
Northampton Town	27	13	6	8	44	32	32
Wimbledon	26	13	5	8	50	24	31
Colchester United	29	14	2	13	47	42	30
Reading	28	12	5	11	41	31	29
Brighton & Hove Albion	25	12	3	10	41	33	27
Luton Town	26	9	9	8	35	42	27
A.F.C. Bournemouth	28	10	6	12	45	43	26
Bristol Rovers	28	12	2	14	47	59	26
Bristol City	28	11	3	14	38	38	25
Tottenham Hotspur	30	10	2	18	38	57	22
Brentford	27	7	6	14	39	47	20
Swindon	29	8	4	17	31	56	20
Aldershot	27	3	1	23	25	97	7

COACHES UPDATE



George Ley, John Faulkner, Les Shannon

Ovenden Papers Football Combination

April 18, 1990 - Luton Town 3 Crystal Palace 2  
Team: Petterson, Richards, Harvey, Scott, Beaumont, Johnson, Cobb, Tighe, Nogan, Gray, O'Sullivan.  
Subs: Pembridge and McGonagle.  
Scorer: Harvey, Cobb, Tighe.

April 21, 1990 - Arsenal 3 Luton 1

Team: Petterson, Richards, Harvey, Scott, Salton, Pembridge, Cooke, Cobb, Gray, Tighe, O'Sullivan.  
Subs: Brown and Lawford.  
Scorers: Harvey.

April 24, 1990 - Luton Town 1 Millwall 2

Team: Petterson, Richards, Harvey, Telfer, Salton, Pembridge, Cobb, Tighe, Gray, Nogan, O'Sullivan.  
Subs: McGonagle, Gormley.  
Scorers: Nogan.

South East Counties League

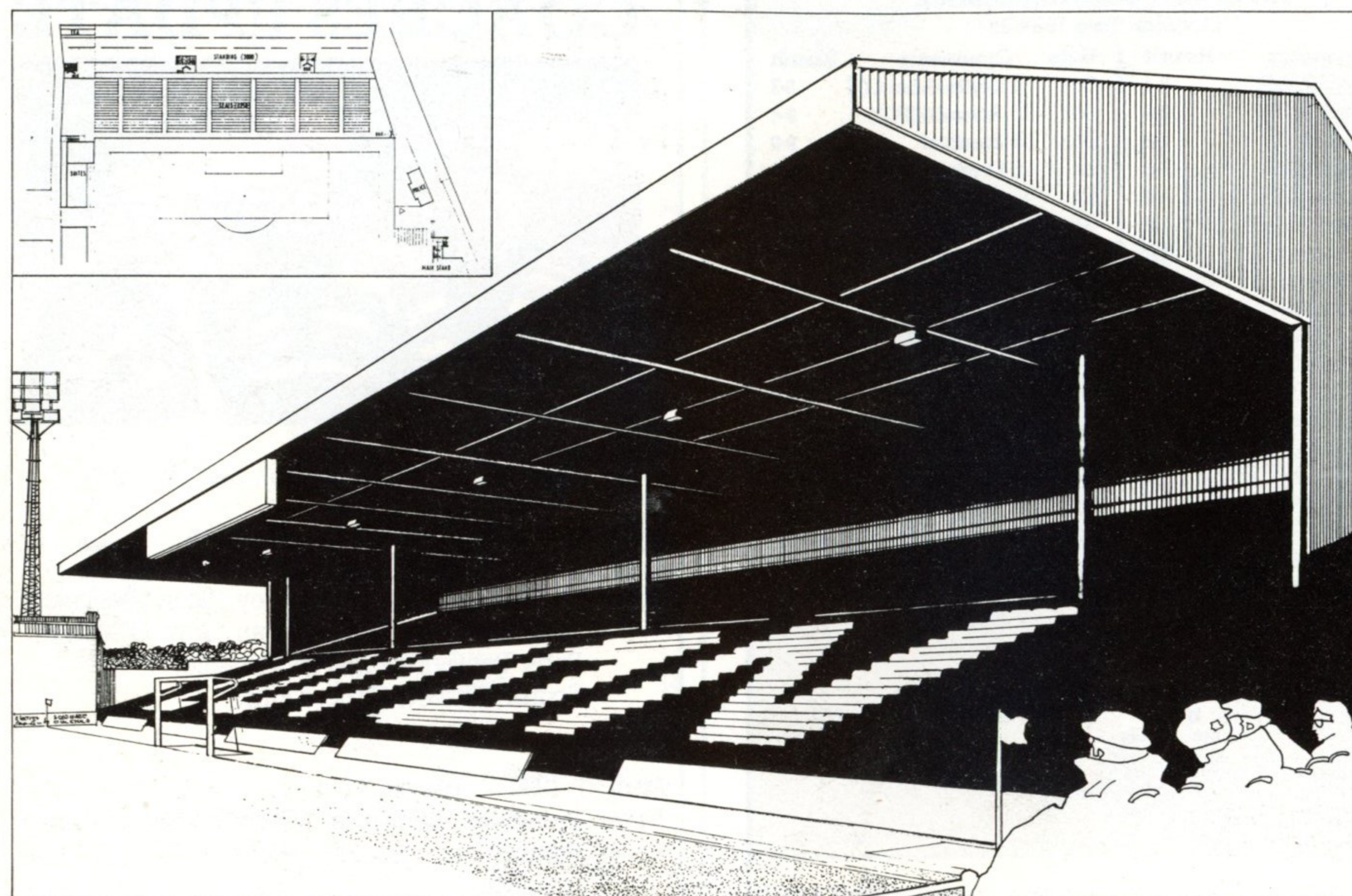
April 14, 1990 - Brentford 3 Luton Town 2  
Team: Watkins, Thompson, Cooper, Telfer, Salton, Campbell, McGonagle, Richards, Rutherford, Gillard, Lawford.  
Subs: Brown and Newman.  
Scorers: McGonagle 2.

April 21, 1990 - Brighton 1 Luton Town 2

Team: Watkiss, Thompson, Cooper, Telfer, Gillard, Campbell, McGonagle, Rogers, Rutherford, Gormley, Dibley.  
Subs: Murray.  
Scorers: Campbell and Rutherford.



# SEATING PLANNED FOR THE KENILWORTH STAND NEXT SEASON



Spectators at Kenilworth Road will have the choice of more than 2,000 new seats next season as the club moves towards the future with seating in the Kenilworth Stand for the first time.

In line with the requirements of the Taylor Report and UEFA's desire for all-seated stadia by 1994, Luton Town propose to introduce a new seated section at the front of the stand. These alterations follow the new regulations arising from the report as it applies to all First Division and Second Division clubs.

The new section will offer excellent facilities, first-class viewing of the action and easy and comfortable access and surroundings.

As the artist's impression on this page shows, there are a number of clear advantages in taking up reservations on the new seats at the earliest opportunity.

The seating at that end of the ground will have a perfect clear and unobstructed view of the pitch and enjoy not only a spacious and modern environment but also the best of facilities.

A new bar unit is being installed and the brand new seats, which benefit from a high viewing position for spectators, will also have their own exclusive access and exit points.

The new seating accommodation in Kenilworth

Stand will also be close to both the Ticket Office and the club Souvenir Shop, thus offering members a package of convenience and comfort.

As more seats are installed in the Kenilworth Stand in the future, of course, in line with the recommendations of the Taylor Report, those who have taken up reservations at the earliest stage will enjoy first option on renewals and have an opportunity to secure their favoured seats for the future as we move towards the all-seater stadia desired by UEFA.

A further benefit of the new seated accommodation will be that season ticket holders will be able to guarantee their own seats in the new 2,250-seated section for cup-ties next season. The Oak Stand will be the designated section for visitors at cup-ties next season.

All in all, the new seated area will provide some of the premier seating facilities in the ground and will represent excellent value for money. Further, as an incentive to those supporters used to standing at Kenilworth Road on a match-by-match basis, but displaced by the new accommodation, the match day prices for seats in the new area are being offered at a special value price of only £8 in the middle and £7.50 on the sides.

## SEASON TICKET AND MEMBERSHIP RENEWAL 1990-1991

### Season Ticket Holders

Season ticket holders can renew by returning their renewal form together with an s.a.e. to the Ticket Office. Renewal forms will be mailed out directly to members after May 14. Personal applications to the Ticket Office will be accepted after June 4, 1990. All season ticket holders seats will be reserved until June 30, 1990.

### Exchanges

Season ticket holders who wish to change their seat position should contact the Ticket Office before June 30, 1990.

### Season Ticket Holders Instalment Offer

Season ticket holders may pay by four instalments: one on purchase, followed by payments on August 1, September 1 and October 1. Full details of this offer are available from the Ticket Office.

Prices are as follows (all prices include membership fee):

Renewals	Prices before 30.6.90	Prices after 14.7.90
<b>MAIN STAND A-E</b>		
Adult	£157	£173
Junior/OAP	81	100
<b>MAIN STAND F</b>		
Adult	121	135
Junior/SC	61	69
<b>MAIN STAND ENCLOSURE</b>		
Adult	121	135
Junior/SC	61	69
Restricted View	90	102
<b>OAK STAND*</b>		
Adult	121	135
Junior/SC	61	69
Restricted view	90	102

\*We regret these seats will not be available for cup matches in 1990-1991 when the Oak Stand will be designated for visitors.

Existing Oak Stand season ticket holders will have first option on transfers to the proposed Kenilworth Road seating before June 30.

### KENILWORTH STAND (SEATING)

Adult	121	135
Junior/SC	61	69

### KENILWORTH STAND (STANDING)

Adult	82	112
Junior/SC	45.50	50

**NB:** These prices are fixed regardless of divisional status, but do not include play-offs or cup-ties.

### Special Family Discount

There will be a special family discount of 20 per cent off season tickets purchased. To qualify, the minimum requirement will be at least two adults and one juvenile under 16, all of whom must be from the same family. This offer applies to the Oak Stand and Kenilworth Stand seating only.

### Membership

Members will receive by mail their new membership cards free of charge during the closed season. Please advise the Ticket Office of any change of address.

### New Members and New Season Ticket Holders

Supporters wishing to become season ticket holders and new applicants for membership are requested to apply to the ticket office after July 2, 1990. New members will be required to pay a joining fee of £1.

### Ticket Office

Please note the Ticket Office will not be open to personal callers for one week from May 14, 1990. From May 21, until next season, the hours will be:

**Monday to Friday 10 am to 4 pm**  
**Saturday 9 am to 12 noon.**

## MATCH DAY PRICES 1990-1991

### MAIN STAND (A-E)

Adults	£12
Juniors/SC	6

### MAIN STAND (F)

Adults	9
Juniors/SC	4

### MAIN STAND ENCLOSURE

Adults	9
Juniors/SC	4
Restricted View	

### OAK STAND

Adults	9
Juniors/SC	4
Restricted View	

### KENILWORTH STAND

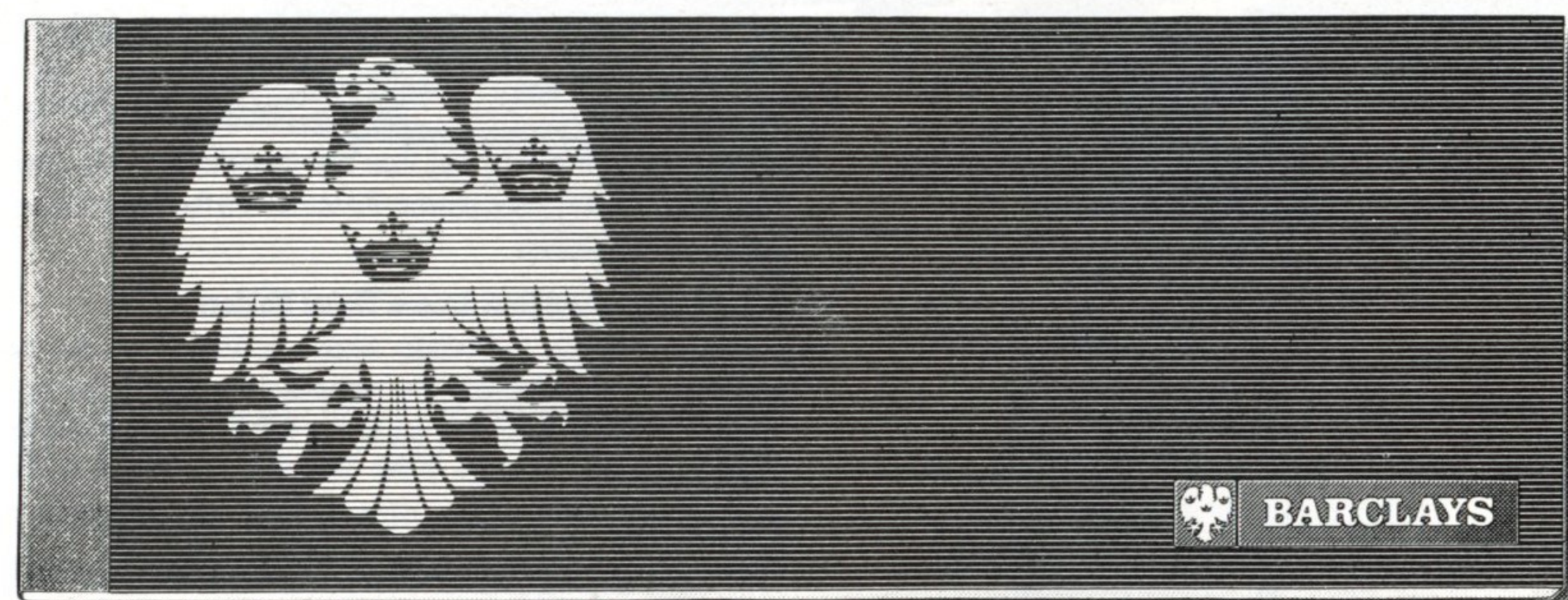
Adults (Centre)	8.00
Adults (sides)	7.50
Juniors/SC	3.50

### KENILWORTH STAND (standing)

Adults	5.50
Juniors/SC	3



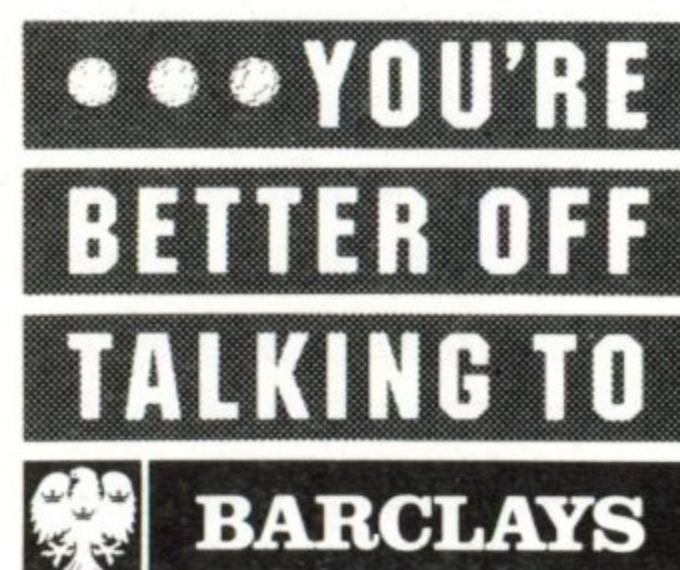
# PENALTIES? YOU WON'T GET ANY AT BARCLAYS.



With The Barclays Bank Account you won't be charged for everyday transactions like cheques, credits and standing orders.

It has three options, two of which pay interest, and you can simply switch between them as your needs change.

Call into your local Barclays branch for further details. The Barclays Bank Account, in a league of its own.



THE BARCLAYS BANK ACCOUNT IS A CURRENT ACCOUNT FOR PERSONAL CUSTOMERS. AN OVERDRAFT FACILITY IS ONLY AVAILABLE ON APPLICATION. INTEREST RATES MAY VARY. WRITTEN DETAILS ARE AVAILABLE FROM BARCLAYS BANK PLC. PERSONAL SECTOR MARKETING, JUXON HOUSE, 94 ST. PAUL'S CHURCHYARD, LONDON EC4M 8EH. MEMBER OF IMRO.

## ■ TAKE YOUR PIC! ■



● Kingsley Black fights his way to the line during our 1-1 draw at Crystal Palace on November 11.



● Danny Wilson raises his arm in triumph after scoring our equaliser at Selhurst Park.



# LUTON & DISTRICT EXPRESS

**YOUR FAST & FREQUENT LONDON LINK**

## 757

**LUTON TOWN-LONDON**

**£4.00 SINGLE – £6.00 DAY RETURN – £7.00 PERIOD RETURN**

**LONDON-LUTON AIRPORT**

**£5.00 SINGLE – £7.50 DAY RETURN – £8.00 PERIOD RETURN**

## CLOSED CIRCUIT TELEVISION

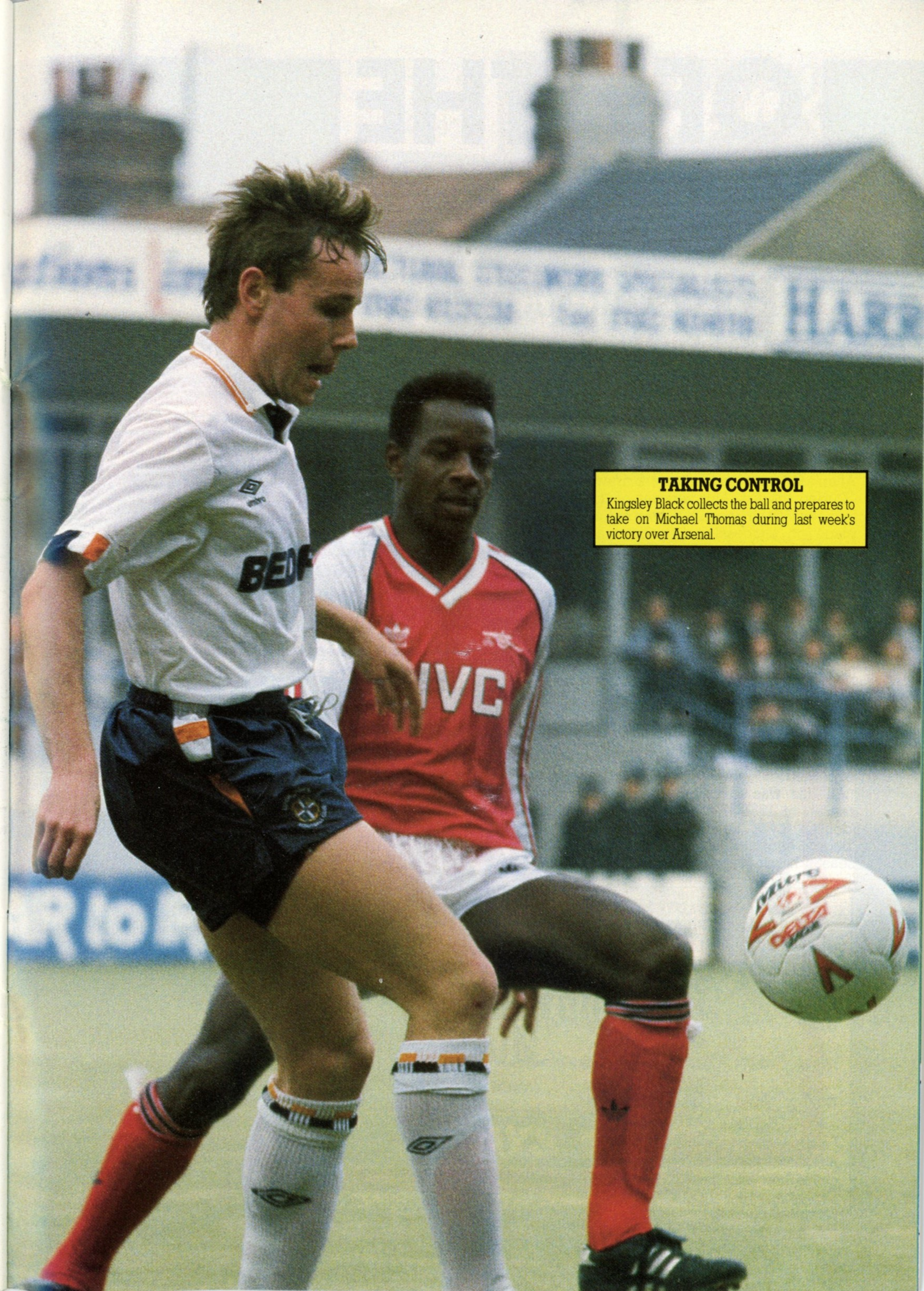


*The first televised football match, 1937*

Now every Football League ground is equipped with television cameras.

The Football Trust has installed Closed Circuit Television systems at more than 110 British grounds. The cameras have a range of 150 metres and immediate close-up prints can be produced. Within minutes of an incident offenders can be identified and arrested with film made available as evidence in court. CCTV is the most effective anti-hooligan measure inside football grounds and the programme has been extended to include portable systems.

CCTV is only one of The Football Trust's many initiatives. Each year it receives over £9.5 million from the Spotting-the-Ball competition run by Littlewoods, Vernons and Zettors and spends it on projects that benefit all levels of the game throughout the United Kingdom.



### TAKING CONTROL

Kingsley Black collects the ball and prepares to take on Michael Thomas during last week's victory over Arsenal.



# OFF THE RECORD

## A TRIP THROUGH SOME OLD TIMES

Although we have not met in a League encounter since our promotion season of 1981/82, games against Crystal Palace, were common place in our pre-war Third Division days writes club statistician Roger Wash.

Our first clash took place at Kenilworth Road on 6th November 1920 when, before a crowd of 10,000, goals from international pair Ernie Simms and Allan Mathieson secured a 2-2 draw.

During the first four seasons of the 1920's home and away fixtures against the same opposition took place on successive Saturdays and, so, Luton travelled to Selhurst Park the following week and were beaten 2-1 with Simms netting the Town's consolation goal.

Palace were promoted at the end of that season but rejoined Luton in 1925 from when, until our own promotion in 1937, fixtures between the sides were eagerly anticipated at Kenilworth Road due to the fact that the Town invariably thrashed Palace as borne out by the scorelines - 6-1 in 1927/28, 5-3 in 1928/29 and 6-0 in 1935/36. Unfortunately Luton were on the receiving end of some sound beatings at Selhurst Park over the same period and a draw was always the most that could be realistically expected.

All this was to change during our promotion season of 1936/37 for we actually achieved the 'double' over Palace thus laying the Selhurst 'bogey' once and for all. After our normal early season hammering of Palace at Kenilworth Road

### OUR LAST FIVE MEETINGS AT KENILWORTH ROAD

1981/82	31/10/81	Luton 1 (Moss) Crystal Palace 0 Att: 11,712
1978/79	24/3/79	Luton 0 Crystal Palace 1 Att: 11,008
1977/78	27/3/78	Luton 1 (Juccillo) Crystal Palace 0 Att: 9,816
1973/74	23/2/74	Luton 2 (Jim Ryan, Butlin) Crystal Palace 1 Att: 14,281
1963/64	18/9/63	Luton 0 Crystal Palace 4 Att: 6,194

\* Roger Wash is our official club statistician.

Anyone with inquiries or comments please write to him  
c/o The Editor, Luton Town F.C., Kenilworth Road Stadium,  
1, Maple Road, Luton LU4 8AW.

### IT HAPPENED 35 YEARS AGO THIS WEEK ...

30th April 1955

In winning 3-0 at Doncaster the Town achieved promotion to the First Division for the first time.

The crowd of 12,585, which included several thousand from Luton saw Peter McEwan with two and Jim Pemberton scored the all-important goals.

### IT HAPPENED TWO YEARS AGO THIS WEEK ...

24th April 1988

On the greatest day in the Club's history a last minute goal from Brian Stein secured a 3-2 win over Arsenal and with it the Littlewoods Cup.

this time 5-2 with Joe Payne scoring three - the return at Selhurst Park was viewed with much trepidation especially as the previous two away games - at Newport and Notts County - had seen defeats.

A crowd of 15,211 turned out at Selhurst Park to see the home side tear into Luton during the first half hour before Fred Roberts, in a seemingly off-side position, put the Hatters ahead.

The second half was one-way traffic due to injuries sustained by two Palace players and Joe Payne scored two, missed a penalty, and provided the Town's fourth goal for Albert Dowes who had been signed from Palace two months earlier after being their top goalscorer during the previous two seasons.

Paths were not destined to cross again until 1963/64 when, with Palace on the ascendancy and the Town tumbling through the divisions, a 4-0 mauling at Kenilworth Road was tempered slightly with a 1-1 draw at Selhurst Park.

The boot was on the other foot when we next met in 1973/74 with the Town again achieving the "double" on their way back to Division One as Palace dropped into Division Three with the highlight a 3-3 draw at Selhurst Park with goals flying in from all angles.

It was 3-3 also the last time we met at Selhurst Park, before this season, with the Town on their way to the Second Division Championship in 1981/82.



•On the spot: Lil Fuccillo scored our winner here against Crystal Palace in 1978.

## Luton News

TOWN & COUNTRY • Mid and South Beds

DUNSTABLE GAZETTE

# 1st AND BEST!

All the LUTON  
TOWN NEWS from  
BRIAN SWAIN

The 'Man in the know'



WEDNESDAYS 14p





## TOP HATTERS COVERAGE!

SATURDAY SPORTSOUND 2-6PM

◆ DAILY SPORTS DESKS ◆

103.8FM & 630kHz

STEREO

## HARROW FINANCE GROUP PLC THE UNDERSTANDING MONEY PEOPLE

- EXPRESS LOANS
  - MORTGAGES AND RE-MORTGAGES
  - COMMERCIAL FINANCE
- NO PROBLEM TOO GREAT - WE CAN HELP

CALL 7 DAYS A WEEK 9am-9pm ON **01-861 3077**

BROKER FACILITIES AVAILABLE

OR WRITE TO HARROW FINANCE FREEPOST HARROW HA1 2BR FOR WRITTEN DETAILS AND QUOTATIONS

LOANS SECURED ON PROPERTY LICENSED CREDIT BROKERS

## T.J. ALDRIDGE

Builders

302 Selbourne Rd. Luton

Tel: (0582) 505412-3



Roofing Specialists - General Building Repairs - Brickwork -  
Plumbing - Painting & Decorating - Carpentry - Electrical

# WELCOME TO...

## CRYSTAL PALACE

● This afternoon we welcome Crystal Palace to Kenilworth Road and congratulate them on reaching the F.A. Cup final for the first time in their history. They will meet Manchester United at Wembley on May 12.

● That glamorous fixture will, of course, be of extra significance to Palace's manager Steve Coppell who was a former player at Old Trafford before taking over at Selhurst Park. Mr Coppell played at Wembley for United in several F.A. Cup finals.

● The F.A. Cup final also offers a unique twist to Palace's history. The club, formed originally in 1861, but re-born in its present form in 1905, made the original cup final venue its home until 1915.

● A Crystal Palace club, formed by the company that controlled the Crystal Palace building, was rejected by the F.A. who did not like the idea of the cup final hosts running their own club. This led to the formation of the present organisation in 1905.

● Since then, Palace have played at Crystal Palace (to 1915), Herne Hill (to 1918), The Nest (to 1924) and Selhurst Park. During this time, Palace's greatest achievements have been in finishing 13th in the First Division in 1980, winning the Second Division title in 1979 and reaching the F.A. Cup semi-finals in 1976.

● Mr Coppell, who took over in succession to Dave Bassett in 1984, is the 20th post-war manager at Crystal Palace and follows Dick Graham, Bert Head, Malcolm Allison, Terry Venables, Dario Gradi, Steve Kember and Alan Mullery.

● Since taking over as manager, Mr Coppell has guided Palace to promotion from the Second Division last season and, following last weekend's victory over Charlton, secured their place in the top flight as well as leading them to Wembley.

● Palace's team last weekend against Charlton was: Martyn, Pemberton, Shaw, Gray, O'Reilly, Hedman, Barber (Madden 78), Thomas, Bright, Thompson, Pardew (Salako 78). Their scorers in a 2-0 victory were Thompson, after 56 minutes, and Humphrey, after 76 minutes.

● Striker Garry Thompson, midfielder Andy Gray and goalkeeper Tony Martyn, from Watford, Queen's Park Rangers and Bristol Rovers respectively, have been Palace's three chief newcomers to the team this season.

● Thompson has been in the side as replacement for injured striker Ian Wright who has twice broken his leg. Nigerian striker John Salako, a skilful goalscorer, has also been in the team recently.

## SPOT RENTAL TO CONTRACT HIRE

# Wilton

## TRUCK RENTAL

STEVENAGE 352469 & LUTON 417559



Back Row: Eddie McGoldrick, Phil Barber, Rudi Hedman, Mark Harris, Gavin Nebbeling (now Fulham), Mark Hone. Middle Row: Dave Madden, Brian Parlin, Alan Parden, Geoff Thomas, Perry Suckling, Jeff Hopkins. Front Row: Mark Bright, Glenn Pennyfather, Ian Wright, John Pemberton, David Burke, Richard Shaw, John Salako.



# FIRST TEAM

# UPDATE

## 1989-90 SEASON

### APPEARANCES AND GOALSCORERS

	Lgwe	Ltldws	Cup	F.A. Cup	Z.D. Cup	Aps	Gls
	Aps	Gls	Aps	Gls	Aps	Gls	Gls
Tim Allpress	1	-	-	-	-	1	-
David Beaumont	14(3)	-	3	-	-	1	-
Kingsley Black	34	9	2(1)	-	1	-	-
Tim Breacker	36	-	3	-	1	-	2
Alec Chamberlain	36	-	3	-	1	-	2
Richard Cooke	3(8)	1	-	-	-	1(1)	-
Mal Donaghy	5	-	-	-	-	-	-
Iain Dowie	24(3)	7	-	(1)	-	2	3
John Dreyer	36	2	3	1	1	-	1
Lars Elstrup	13(8)	4	3	5	-	-	-
Sean Farrell	-	(1)	-	-	-	-	-
Paul Gray	2(5)	1	-	-	-	(2)	1
Mick Harford	1(3)	-	-	-	1	-	-
Richard Harvey	17(9)	-	1	-	1	-	2
Ceri Hughes	1	-	-	-	-	-	-
Julian James	17(1)	1	-	-	1	-	1
Marvin Johnson	7(5)	-	(1)	-	1	-	1
Mick Kennedy	30	-	2	-	1	-	1
Darron McDonough	13	-	2	-	-	-	-
Kurt Nogan	10	2	-	-	-	-	-
Neil Poutch	-	(1)	-	-	-	-	-
David Preece	28(2)	1	3	1	1	-	2
Jason Rees	6(6)	-	-	-	-	-	-
Graham Rodger	2	-	1	-	-	-	-
Aaron Tighe	-	-	-	-	-	1(1)	-
Roy Wegerle	13(2)	2	3	4	-	-	2
Steve Williams	14	1	1	-	-	-	-
Danny Wilson	33	7	3	-	1	1	2

LEADING GOALSCORERS: (league and cup). Lineker (Tottenham) 26, Barnes (Liverpool) 24, Rush (Liverpool) 24, Le Tissier (Southampton) 23, Platt (Aston Villa) 23.

### BARCLAYS FOOTBALL LEAGUE DIVISION ONE

P	W	D	L	F	A		W	D	L	F	A	Pts.
35	11	5	1	35	14	Liverpool .....	8	5	4	34	21	70
36	13	2	3	33	17	Aston Villa .....	8	3	7	18	15	68
36	11	1	6	33	23	Tottenham .....	7	6	8	24	22	60
36	14	2	2	37	13	Everton .....	3	6	10	16	23	58
35	12	3	2	34	10	Arsenal .....	4	4	10	14	25	55
36	7	7	4	29	23	Chelsea .....	7	5	6	24	25	54
35	9	5	4	37	27	Southampton .....	5	5	7	29	32	52
36	7	9	2	22	12	Norwich .....	6	3	9	17	25	61
36	9	4	5	25	19	QPR .....	4	7	7	17	20	50
36	11	2	5	23	19	Coventry .....	3	5	10	15	31	48
34	4	8	5	21	22	Wimbledon .....	7	7	3	22	15	48
36	8	4	6	27	21	Nottingham Forest .....	5	5	8	21	26	48
36	9	4	5	26	20	Manchester City .....	3	7	8	15	29	47
36	7	5	5	25	14	Manchester United .....	5	3	10	20	29	44
<b>35</b>	<b>8</b>	<b>6</b>	<b>4</b>	<b>26</b>	<b>21</b>	<b>Crystal Palace .....</b>	<b>4</b>	<b>2</b>	<b>11</b>	<b>14</b>	<b>42</b>	<b>44</b>
35	9	1	8	27	18	Derby .....	3	6	8	13	18	43
36	8	6	4	21	14	Sheffield Wednesday .....	2	4	12	12	33	40
<b>36</b>	<b>7</b>	<b>8</b>	<b>3</b>	<b>23</b>	<b>18</b>	<b>LUTON TOWN .....</b>	<b>1</b>	<b>5</b>	<b>12</b>	<b>16</b>	<b>37</b>	<b>37</b>
36	4	6	8	17	23	Charlton .....	3	3	12	13	31	30
36	4	6	8	22	22	Millwall .....	1	5	12	16	38	26

## Luton Town F-A Att Pos 1

Aug 19	Tottenham Hotspur	1-2	17,668	-	Chamberlain
Aug 22	Sheffield Wednesday	2-0	9,503	-	Chamberlain
Aug 26	Liverpool	0-0	11,124	10	Chamberlain
Aug 30	Queens Park Rangers	0-0	10,565	11	Chamberlain
Sept 9	Charlton Athletic	1-0	8,859	7	Chamberlain
Sept 16	Coventry City	0-1	11,152	8	Chamberlain
Sept 19	Mansfield Town (LC2-1)	4-3	5,361	8	Chamberlain
Sept 23	Wimbledon	1-1	8,449	10	Chamberlain
Sept 30	Manchester City	1-3	23,863	14	Chamberlain
Oct 3	Mansfield Town (LC2-2)	7-2	6,519	14	Chamberlain
Oct 14	Aston Villa	0-1	9,433	16	Chamberlain
Oct 21	Norwich City	4-1	9,038	12	Chamberlain
Oct 24	Everton (LC3)	0-3	18,428	12	Chamberlain
Oct 28	Millwall	1-1	10,433	14	Chamberlain
Nov 4	Derby County	1-0	8,919	11	Chamberlain
Nov 8	Oxford United (ZDC)	3-2	1,754	11	Chamberlain
Nov 11	Crystal Palace	1-1	8,000	10	Chamberlain
Nov 18	Manchester United	1-3	11,141	13	Chamberlain
Nov 25	Southampton	3-6	14,014	13	Chamberlain
Nov 27	Crystal Palace (ZDC2)	1-4	3,747	13	Chamberlain
Dec 2	Tottenham Hotspur	0-0	12,620	15	Chamberlain
Dec 9	Sheffield Wednesday	1-1	16,339	15	Chamberlain
Dec 16	Arsenal	2-3	28,761	18	Chamberlain
Dec 26	Nottingham Forest	1-1	10,754	17	Chamberlain
Dec 30	Chelsea	0-3	10,068	19	Chamberlain
Jan 1	Everton	1-2	21,743	19	Chamberlain
Jan 6	Brighton (FAC3)	1-4	10,361	19	Chamberlain
Jan 13	Liverpool	2-2	35,321	19	Chamberlain
Jan 20	Queens Park Rangers	1-1	9,703	19	Chamberlain
Feb 14	Wimbledon	2-1	3,496	18	Chamberlain
Feb 19	Charlton	0-2	6,008	18	Chamberlain
Feb 24	Southampton	1-1	9,417	18	Chamberlain
Mar 3	Manchester Utd	1-4	35,327	18	Chamberlain
Mar 7	Coventry	3-2	8,244	17	Chamberlain
Mar 10	Aston Villa	0-2	22,505	17	Chamberlain
Mar 17	Manchester City	1-1	9,765	17	Chamberlain
Mar 24	Millwall	2-1	9,027	17	Chamberlain
Mar 31	Norwich City	0-2	14,451	18	Chamberlain
Apr 7	Chelsea	0-1	15,221	18	Chamberlain
Apr 14	Everton	2-2	9,538	18	Chamberlain
Apr 16	Nottingham Forest	0-3	17,001	18	Chamberlain
Apr 21	Arsenal	2-0	11,595	18	Chamberlain
Apr 28	Crystal Palace				
May 5	Derby County				
May 12	FA Cup Final				

2	3	4	5	6	7	8	9	10	11	12	14
Breacker	McDonough	Beaumont	Dreyer	Wilson	(Williams)	(Preece)	Black	Wegerle <sup>1</sup>	Kennedy	[Harvey]	[Dowie]
Breacker	Dreyer	Williams	McDonough	Beaumont	Kennedy	Wegerle	Wilson <sup>1P</sup>	Preece	(Black <sup>1</sup> )	[Farrell]	Harvey
Breacker	Dreyer	(Williams)	McDonough	Beaumont	(Kennedy)	Wegerle	Wilson	Preece	Black	[Elstrup]	[Harvey]
Breacker	Dreyer	Williams	McDonough	Beaumont	Kennedy	Wegerle	Wilson	Preece	(Black)	[Elstrup]	Harvey
Breacker	Dreyer	Wilson <sup>1P</sup>	McDonough	Beaumont	Kennedy	Wegerle	Elstrup	Preece	Black	Harvey	Farrell
Breacker	Dreyer	Wilson	(McDonough)	Beaumont	Kennedy	Wegerle	Elstrup	(Preece)	Black	[Harvey]	[Cooke]
Breacker	Dreyer	Wilson	McDonough	Beaumont	Kennedy	Wegerle	Elstrup	Preece	(Williams)	[Black]	Harvey
Breacker	Dreyer	Wilson	(McDonough)	Beaumont	Kennedy	Wegerle	Elstrup	Preece	Black	[Harvey]	[Cooke]
Breacker	Dreyer	Harvey	Beaumont	(Kennedy)	Wegerle	Elstrup	Preece	Black <sup>1</sup>	[Johnson]	[Cooke]	
Breacker	Dreyer	Wilson	Rodger	Beaumont	Kennedy	Wegerle	Elstrup	Preece	Black	Harvey	Cooke
Breacker	Dreyer	Wilson	(Rodger)	Beaumont	Williams	(Wegerle)	Elstrup	Preece	Black	[Cooke]	[Harvey]
Breacker	(Dreyer)	Wilson	McDonough	Beaumont	Harvey	Wegerle	Elstrup	(Preece)	Black	[Johnson]	[Dowie]
Breacker	Dreyer	Wilson	(McDonough)	Beaumont	Williams	(Wegerle)	Elstrup	Kennedy	Black	[Dowie]	[Harvey]
Breacker	Dreyer	Wilson	Johnson	Beaumont	Williams	Dowie <sup>1</sup>	Elstrup	Kennedy	(Black)	[Preece]	Harvey
Breacker	Harvey	Wilson	Johnson	Beaumont	(Cooke)	Wegerle	Dowie <sup>2</sup>	(Kennedy)	Preece	[Gray <sup>1</sup> ]	[Tighe]
Breacker	Dreyer	Wilson	Johnson	(Beaumont)	Williams	Dowie	(Elstrup)	Kennedy	Black	[Wegerle]	[Harvey]
Breacker	Harvey	Wilson	Johnson	Dreyer	(Williams)	Wegerle	Dowie	Kennedy	Black	[Elstrup]	Preece
Breacker	Harvey	Wilson	(Johnson)	Dreyer	(Preece)	Elstrup	Dowie	Kennedy	Black <sup>1</sup>	[James]	[Wegerle]
Breacker	Harvey	Wilson	(Allpress)	Dreyer	Preece	Wegerle	Dowie <sup>1</sup>	James	(Tighe)	[Cooke]	[Gray]
Breacker	Harvey	(Wilson)	Johnson	Dreyer	Williams	Wegerle	Dowie	Kennedy	(Black)	[Preece]	[Elstrup]
Breacker	Harvey	Wilson	(Johnson)	Dreyer	Williams	James <sup>1</sup>	Dowie	Elstrup	Preece	[Cooke]	Gray
Breacker	Harvey	Kennedy	Donaghy	Johnson	Williams	(James)	Dowie	Elstrup	(Black)	[Cooke]	[Gray]
Breacker	Dreyer	Kennedy	Donaghy	(Johnson)	Williams	Cooke <sup>1</sup>	Dowie	(Elstrup)	Black	[Harvey]	[Harford]
Breacker	Harvey	(Kennedy)	Donaghy	Dreyer	Cooke	Wilson	Dowie	Preece	Black	[Harford]	James
Breacker	Harvey	Kennedy	(Donaghy)	Dreyer	Wilson <sup>1P</sup>	James	Dowie	Preece	(Gray)	[Harford]	[Rees]
Breacker	Harvey	Kennedy	Johnson	Dreyer	Wilson	Kennedy	Harford	Preece	Black	[Dowie]	Rees
Breacker	Harvey	Kennedy	Donaghy	Dreyer	Wilson	Nogan <sup>1</sup>	Harford	Preece	Black <sup>1</sup>	Dowie	James
Breacker	Harvey	Kennedy	James	Dreyer	Wilson	Nogan	Dowie	(Preece <sup>1</sup> )	Black	[Rees]	Johnson
Breacker	Harvey	Kennedy	James	Dreyer	Wilson	Nogan <sup>1</sup>	Dowie <sup>1</sup>	Preece	(Black)	[Elstrup]	Johnson
Breacker	Harvey	Kennedy	James	Dreyer	Wilson	Nogan	(Dowie)	Preece	(Black)	[Elstrup]	[Johnson]
Breacker	Harvey	(Kennedy)	James	Dreyer	Wilson	Nogan	Dowie <sup>1</sup>	Preece	Black	[Rees]	Johnson
Breacker	Harvey	Rees	James	Dreyer	Wilson	Nogan	Dowie	(Preece)	Black <sup>1</sup>	[Cooke]	Johnson
Breacker	(Harvey)	Rees	James	Dreyer	Wilson	Nogan	Dowie <sup>1</sup>	(Preece)	Black <sup>1</sup>	[Johnson]	[Gray <sup>1</sup> ]
Breacker	Allpress	Kennedy	James	Dreyer	(Rees)	Nogan	Dowie	(Hughes)	Black	[Poutch]	[Gray]
Breacker	Harvey	Kennedy	James	Dreyer	Wilson <sup>1P</sup>	(Nogan)	Dowie	(Preece)	Black	[Gray]	[Rees]
Breacker	James	Kennedy	McDonough	Dreyer	Wilson	(Gray)	Dowie	Preece	Black <sup>1</sup>	[Rees]	McDonough
Breacker	McDonough	(Kennedy)	James	Dreyer	Wilson	(Nogan)	Dowie	Preece	Black	[Rees]	Harvey
Breacker	McDonough	(Kennedy)	James	Dreyer	Wilson	(Cooke)	Dowie	Preece	Black	[Beaumont]	[Gray]
Breacker	McDonough	(Kennedy)	James	Dreyer	Wilson	(Rees)	Dowie <sup>2</sup>	Preece	Black	[Beaumont]	[Cooke]
Breacker	McDonough	(Kennedy)	James	Dreyer	Wilson	(Rees)	Dowie	Preece	Black	[Beaumont]	[Elstrup]
Breacker	McDonough	Beaumont	(James)	Dreyer	Wilson	Rees	Dowie <sup>1</sup>	Preece	(Black <sup>1</sup> )	[Elstrup]	[Johnson]

### MAN IN CHARGE Peter Foakes (Clacton)

A schoolteacher, Peter is married and has two daughters. He began refereeing in the Essex Senior League and became a Football League referee in 1987. He enjoys cricket, rugby and golf.



© The Football League FAC = F.A. Cup ZDC = Zenith Data Cup

() indicates player substituted [] indicates substitute used Home fixtures in **Bold** Scorer's name in **Bold** P = Penalty † denotes own goal

## TEAM SPIRIT-REPLI-KIT.



## REPLI-KIT

TOP TEAM REPLICA FOOTBALL KIT



Voucher No. 20



# ANOTHER WINNER FROM LUTON TOWN.



**VAUXHALL. ONCE DRIVEN, FOREVER SMITTEN.**



VAUXHALL IS BACKED BY THE WORLDWIDE RESOURCES OF GENERAL MOTORS. CAR SHOWN CAVALIER STANDARD

## VAUXHALL TEAM CHECK.

### LUTON TOWN

*Team Manager: Jim Ryan*

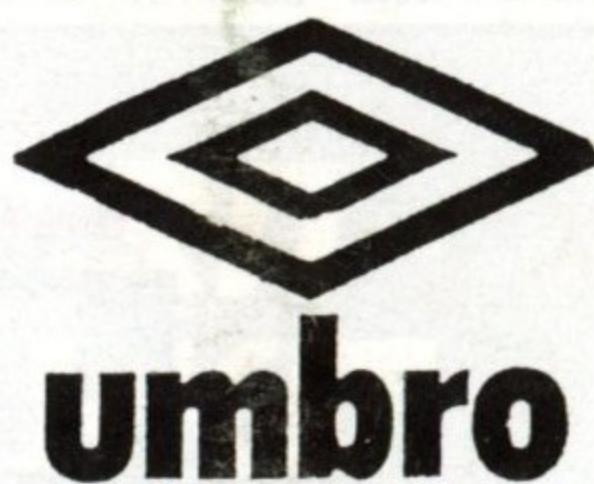
*White Shirts, Navy Shorts*

- 1 Alec Chamberlain
- 2 Tim Breacker
- 3 Darron McDonough
- 4 Mick Kennedy
- 5 Julian James
- 6 John Dreyer
- 7 Danny Wilson
- 8 Jason Rees
- 9 Iain Dowie
- 10 David Preece
- 11 Kingsley Black

Subs



**Official Ball  
Sponsors**



**Official Kit Sponsors**

### CRYSTAL PALACE

*Team Manager: Steve Coppell*

*Red Shirts, Red Shorts*

- 1 Nigel Martyn
- 2 John Pemberton
- 3 Richard Shaw
- 4 Andy Gray
- 5 Gary O'Reilly
- 6 Rudi Hedman
- 7 Phil Barber
- 8 Geoff Thomas
- 9 Mark Bright
- 10 Gary Thompson
- 11 Alan Pardew

Subs

Referee: P.L. Foakes (Clacton) Linesmen: K.S. Dunn (yellow trim), J.R. Harris (red trim).

**Designed and printed by Abacus Press, Berkhamsted, Herts.**