

TOWN

OFFICIAL PROGRAMME £1.20

TOTTENHAM



Saturday, December 2, 1989 Kick-off 3.00 p.m.

TOTTENHAM HOTSPUR

BARCLAYS FOOTBALL LEAGUE DIVISION ONE

This match is sponsored by: Vauxhall Bedford, Vauxhall Finance, Vauxhall Parts.



• Danny Wilson follows up Richard Harvey's blistering drive against Manchester United to net our goal in a 1-3 defeat here on November 18.

APOLLO SYSTEMS LTD.

0582 34928 - 481102

- ★ Electrical Installations
- ★ Industrial and Commercial
- ★ Maintenance ★ Fire Alarms
- ★ C.C.T.V. Installations
- ★ Suspended Ceilings
- ★ Office Partitions & Screens
- ★ Fireproof Curtain Walls

39B SHAFTESBURY RD, LUTON

OGDEN & CLEAVER

320-328 Selbourne Road, Luton, Beds. LU4 8NY
Tel: (0582) 597631.

The biggest selection of Wallcoverings in Luton.

Quality Paints by Dulux, Manders, Sandtex & Sadolin.

Glass cut to size

Wide selection of mirrors and other decorative items.

SPECIAL DISCOUNTS FOR LUTON TOWN MEMBERS

Part of the Manders Group



• Scottish international goalkeeper Jim Leighton saves well at the feet of Roy Wegerle during the home clash with United.



• Kingsley Black's close range shot in the second half flies past Leighton and narrowly over the bar.



The Rascal. A real half-tonner.

BEDFORD RASCAL 
BACKED BY THE WORLDWIDE RESOURCES OF GENERAL MOTORS



Kenilworth Road Stadium
1 Maple Road, Luton, Beds LU4 8AW

PRESIDENT

Bertram Ward

CHAIRMAN

Brian Cole

VICE CHAIRMAN

R.J. Smith

DIRECTORS

T.W. Bailey, D. Evans M.P. C.J. Hudson, E.S. Pearson,
R.J. Pinney, H. Richardson J.P. D.G. Watson-Challis

GENERAL MANAGER/SECRETARY

Bill Tomlins

TEAM MANAGER

Ray Harford

ASSISTANT TEAM MANAGER

Terry Mancini

HONORARY LIFE MEMBERS

J. Richardson, T. Hodgson
C. Holloway

VICE PRESIDENTS

R.L. Banks, C. Bygraves, C.J. Evans, G. Evans,
E. Fountain, I.E. Holmes, R. Larkinson, R. Safranek,
J.R. Smith, E. Waller

HONOURS

LITTLEWOODS CUP WINNERS 1987/88
FA CUP FINALISTS - 1958-59
LITTLEWOODS CUP FINALISTS - 1988-89
SIMOD CUP FINALISTS - 1987-88
CHAMPIONS - DIVISION 3(S) 1936-37
CHAMPIONS - DIVISION 4 1967-68
CHAMPIONS - DIVISION 2 1981-82

LUTON TOWN HOTLINE

Match Tickets, Match Enquiries,

Membership, Junior Hatters:

Ring - Cherry Newbery,
Ticket Supervisor - Luton (0582) 411622
24 Hour Service - Luton (0582) 30748

Advertising and Match Sponsorship:

Ring - Wendy Grzybowska, Marketing Executive
Luton (0582) 411622

Stadium Hire/Special Events: Ring - Mike Beevor,
Special Events Manager Luton (0582) 411622

Umbro Sportswear/Souvenirs: Ring - Bev Tyler,
Sales Supervisor Luton (0582) 411622

Banqueting Function Facilities: Ring - Peter Saul
Catering Manager Luton (0582) 411622

Promotions Office: Lotteries - Ring John Cornall,
Development Executive Luton (0582) 416976

Soccerline: Ring - 0898 700 273 (38p per min peak)
(25p off peak)

Club Office hours:

8.30 am - 6 pm. Luton (0582) 411622 Fax: (0582) 405070

Edited by: Robert Alexander Associates

Pictures by: Apex Photography, Milton Keynes

RAY'S REVIEW

Good afternoon and a warm welcome to our visitors Tottenham Hotspur. In spite of everything that has happened in the last three matches, the spirit of the players has been first class as we approach this match and I hope we can take all three points and provide an exciting match today. As everyone well knows, we were beaten by Manchester United in an open and entertaining game and then lost twice heavily away from home. Our recent defensive frailties have been exposed, but we have looked very good going forward and I am sure we will get over this spell of injuries and enjoy a run of better results.

Anyone who was at Selhurst Park last Monday for the Zenith Data Systems Cup tie will have already drawn his or her own conclusions from what they saw happening on the pitch and it is not my intention to further the debate on that match here in print this afternoon. Suffice to say, we are awaiting the referee's report with interest as I write and no further comment can be made. The fact we were down to nine players obviously contributed to our defeat, but I felt we showed we were capable of playing some very good football and we also had two players making very impressive debuts in the senior side. The defeat at Southampton is less easy to explain away. We were exposed defensively.

The other side of the coin during this run has been the performance we have seen from our younger players. It is very difficult to make your debut let alone in a team that is down to nine men or away from home and under pressure. This is particularly so for defenders. If you are a forward you can perform skills and look good and then, if you make a mistake, you are forgiven. It is not the same in defence where lack of experience can be punished very severely and without any mercy. We know we face a difficult game today against a team with a reputation for playing good football. After three poor results, we shall be going flat out to win. Thankyou for your support.



Ray Harford

Mailbag & Supporters News

Want to air your views?

Please write to: **The Editor, c/o Luton Town FC., Kenilworth Road Stadium, 1 Maple Road, Luton, Beds. LU4 8AW.**

Five-a-sides for Juniors

Dear Sir
Commencing in February 1990, the Centre is hoping to organise Junior Indoor Five-a-Side Football Leagues for teams in the Under 14's and Under 12's age groups. We are currently looking for six teams (per age group) who would like to take part and I would ask that if possible could you please mention this in one of your home programmes, preferably before the New Year. In past years I have written to you asking for your help and you have always been kind enough to have something printed.

Many thanks and once again I hope you will be able to give us some assistance.

Yours faithfully

Ed Watson
Assistant Manager

Putteridge Recreation Centre,
Putteridge Road,
Stopsley,
Luton

Editors Note: Come on lads, lots of applications in to Mr. Watson.

Admirer from Iraq

Dear Sir
My best regards and deep admiration to you and all the Luton Town supporters.

My name is Shehab Ahmed. I am a 26-year old soldier in the army and I am a very keen supporter of Luton Town F.C. and Nottingham Forest F.C.

My favourite players at Luton Town are Danny Wilson and Roy Wegerle and at Forest, Des Walker and Steve Hodge.

I hope you can print my letter in the Luton Town review or the match programme as a loyal fan from Iraq.

Yours sincerely
P.O. Box 7357
Al-Haifa
Baghdad
Iraq

Shehab Ahmed

Ninety-Two Club Special

Dear Sir
I am writing on behalf of "The Ninety-Two Club" a self-financing organisation open to all football supporters

who have attended games on all League Grounds. We were formed with a membership of just 39 in June 1978, but due to the necessary qualifying conditions our membership can only ever grow at less than 80 each season.

In order to gain publicity and finance to continue in existence we have published a low cost booklet for football supporters to enter details of all the games which they attend.

The 54 page booklet, with space to enter full details of 100 games attended also includes a complete list of phone numbers of league clubs, weather forecast services, main railway stations and enquiry offices. Price £1.50 including postage from:-
The Ninety Two Club (Ref AS),
104 Gilda Crescent, Whitchurch,
Bristol BS14 9LD

We do hope you can help us with our efforts in promoting genuine football supporting.

Yours sincerely

Mr Alan J Strudwick
Publicity Support Officer

The Ninety-Two Club
76 Woodland Avenue,
Hove,
Sussex BN3 6BN

LUTON TOWN SUPPORTERS CLUB

Dear Fellow Supporter

We are sure that all our members share with the committee the sense of sadness and loss at hearing of the tragic death of Luton Town's former secretary John Wilkinson.

John will be greatly missed at all levels of local football. We send our sincere sympathy to his widow Mary and son Neil. A donation has been sent by the committee to the British Heart Foundation in memory of John.

I must say a big thankyou to Ron Howard, who was guest speaker at our recent supporters club meeting.

He was superb and what interesting stories he had to tell.

Monday 4th December 7.30 is the date for our first "chat show" with special guests Danny Wilson and Roy Wegerle. Tickets available today after the match £2 each.

Every supporter club member will be receiving their newsletter in the post shortly. For those who haven't yet joined the Supporters Club, but do like reading the newsletters, we have a limited number to sell £1 per copy after the next home match.

Yours in football



Pam Gray
Chairperson

J. SAPSWORTH LTD

GLAZING REPAIRS - GLASS SUPPLIES

DECORATING SPECIALISTS

92 MARSH ROAD, LUTON, BEDS.

☎ GLAZING & 24 hr EMERGENCY SERVICE 0582 573025

DECORATING 0582 597505

FAX 0582 492025

EXECUTIVE MEMBERS

ABB ROBOTICS LTD

MR T ADAMSON

ADRIATIC ENTERPRISES LTD

ANACHEM LIMITED

BEDFORD COMMERCIAL VEHICLES

BERVALE MEAD INSURANCE

W J BILLINGTON LTD

BLAKEY ENGINEERING CO LTD

BROAD STREET PRINT

JSB BUSINESS FORMS

MR R BANKS

BEVENGRACE LTD

CAMBERWELL COPIERS

CHEF FOODS

CRANE & STAPLES SOLICITORS

CHAMBERLAIN WINDOWS

CAPITAL METALWORK LTD

CLARENDON HATS

MR T COATES

MR P COOPER

MR M CONNELL

COMPLETE CONTRACTS

COUNTRY PROPERTIES

DUPONT (UK) LTD

MR E EDWARDS

EVERGREEN SUPPLIES LTD

FILMERGRAPHIC PRESS LTD

FENNEMORES SOLICITORS

FLITWICK OIL

V G GREEN & SONS LTD

MR D HALES

HANDSCOMBE FINANCIAL AND INVESTMENT SERVICES

K W HARVEY & SONS LTD

E W HUDSON (HOLDINGS) LTD

B. HICKS & COMPANY

HUMBERGROVE INSURANCE SERVICES

HANS JURGEN (IMPORTERS) LTD

JOHN LAING CONSTRUCTION LTD

J M KEENAN LTD

MR P LAYCOCK

MILCUTT ENGINEERING LTD

NEAHURST LIMITED

OPELVALE GROUP

MR S PEARSON

F W PEARCE BUILDERS LTD

R B T GROUP

REYVEN (SPORTSFIELDS) LTD

RICHARDSON & BOTTOMS LTD

MARK JAMES SALVAGE

SHOREY'S TRAVEL

MR & MRS D SHERIDAN

SPACE DISPLAY SYSTEMS

SWIFTS OFFICE SHOP

TILDAE INVESTMENTS LTD

W S TYREMASTERS (DIVISION OF WEST & SELICK (TYRES) LTD)

VAUXHALL MOTORS

WALLSPAN BEDROOMS

WILTON TRUCK RENTAL

WOODWARD BUILDERS

ELECTROLUX LTD

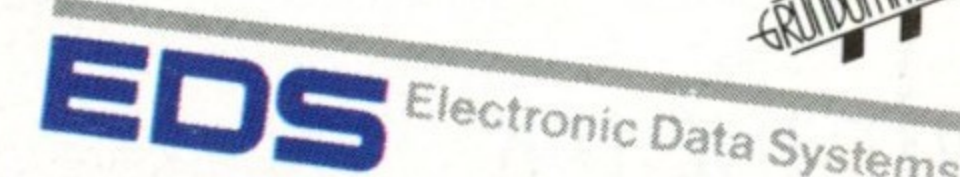
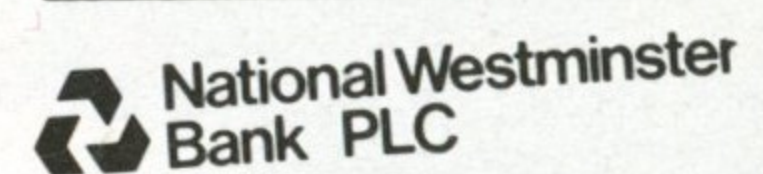
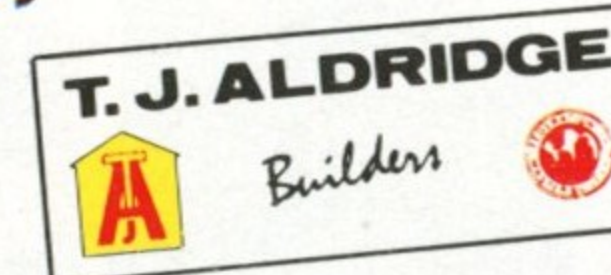
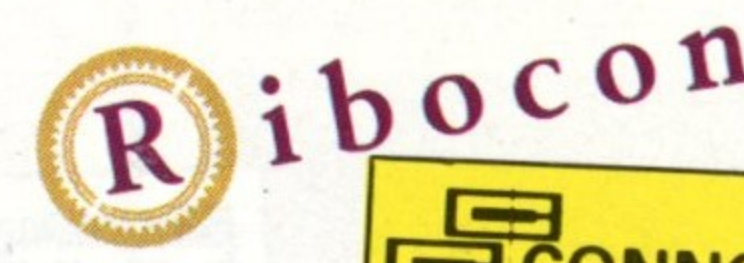
SOCCERLINE

0898 700 273

38p per min Peak

25p per min off Peak

EXECUTIVE BOX HOLDERS



WE'VE ALSO MADE SOME CHANGES TO OUR LINE UP THIS SEASON

Kenilworth Road isn't the only place you can see a new line up this afternoon.

Just down the road in the Arndale Centre, and in our showrooms throughout the U.K., you can see the new additions to our own squad.

The Cameo Collection is making its home debut in what is undoubtedly the most attractive and unbeatable line-up in fitted bedroom furniture in the U.K.

And if that weren't enough you'll find that like Luton Town, we too have proved that you don't need to break the bank to put together a winning combination.



Wallspan

Wallspan Bedrooms Limited,
Head Office: Maulden Road,
Flitwick, Beds MK45 5BW.
Telephone: 0525 716161

SHOWROOMS THROUGHOUT THE U.K.



• **Ready for action:** David Beaumont helps the AA's John Sturgeon to put up the signs in preparation for the debut today of our free park-and-ride scheme for members, sponsored by the Herald and Post.

PARK AND RIDE DETAILS

The park-and-ride shuttle buses leave the car park at the I.B.C. car park junction of Kimpton Road and Airport Way from 1.30pm onwards on match days.

They run to Kenilworth Road at 13.40, 13.55, 14.15 and 14.30. For the return journey after the match the buses leave immediately the game is over with the last bus running at 16.55.

DID YOU KNOW?

Our goalkeeper Alec Chamberlain started his career as an outfield player and was once coached by a 1966 World Cup winner? Full story on page 19.

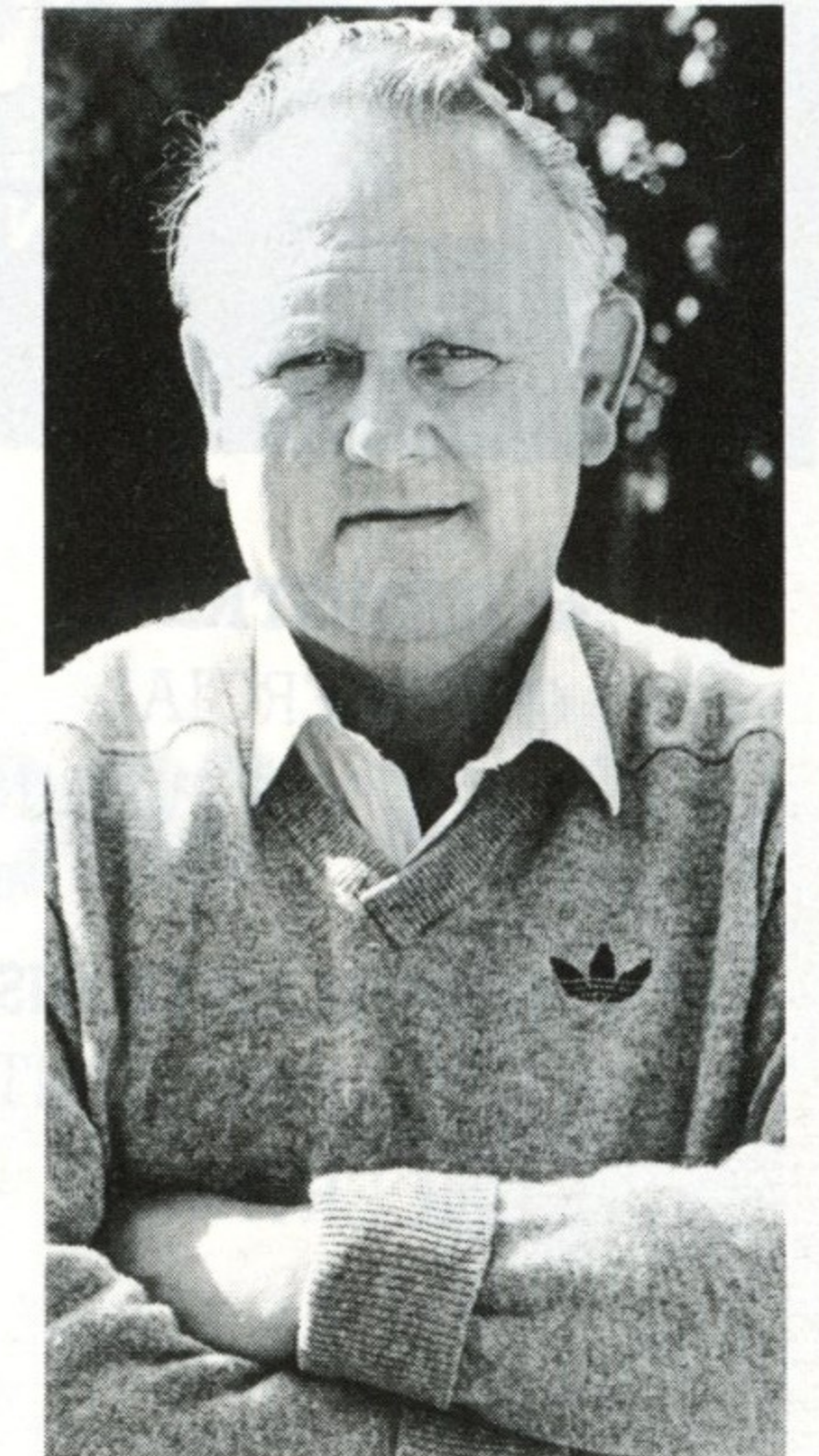
YOUNG EAGLES

The Barclays League 'Young Eagles' for November were Steve Redmond of Manchester City (North-West), Stuart Ripley of Middlesbrough (North-East), Kevin Ashley of Birmingham City (Midlands), Rodney Wallace of Southampton (London/South) and Stuart Slater of West Ham (London/East Anglia).

JOHN WILKINSON A TRUE FRIEND OF FOOTBALL

It was with deep sadness and shock that we heard of the death of our former club secretary John Wilkinson on Monday, November 20, 1989. John died suddenly at his home in Carnegie Gardens, Luton. He was 58. He leaves his wife Mary and son Neil.

To anyone who knew him during his 40-year connection with Luton Town, John will always be synonymous with his love of football and with this club in particular. From 1945, when he came as a schoolboy player, to 1985, when he left after nine years as the man in the secretary's office, John was always closely associated with the affairs of Kenilworth Road and his passing is a sad loss to all his many friends in Luton and in the sport he loved.



• John Wilkinson.

Born in Luton in January 1931, John first came to Kenilworth Road as an aspiring 14-year-old player in 1945. He was an enthusiastic full-back and went on to play in every position except goalkeeper for the club's junior teams.

A knee injury ended his playing ambitions in 1951 when he was 20 and he then embarked on a career with Luton Town which took him from youth team trainer to club shop manager and a host of other roles on his way to succeeding Bob Redhead in the club secretary's office in 1976.

Throughout his long association with the club, John's great enthusiasm and humour always shone through. He was a man much loved by his colleagues and the match-day staff who worked for him every weekend.

He was warm and honest and remained a true fan of Luton Town even after his

departure from the club in 1985. His knowledge of players and administrators and the post-war history of the club was unrivalled as many an inquiring called found out.

His love of football was deep. After leaving Kenilworth Road, he worked for Bedfordshire County Council and at weekends for BBC Radio Bedfordshire as a football reporter whose knowledge and enthusiasm were always respected.

He was known throughout the game and all over the country as a great ambassador for Luton Town and football and the turnout of mourners at his funeral on Friday, November 24, at Streatley Parish Church was a clear signal of the esteem and affection in which he was held by all those who knew him.

As a mark of respect for John, the players will be wearing black armbands today. The club sends its deepest sympathy to his family.

B & T sparks
ELECTRICAL CONTRACTORS

★ FIRE ALARMS
INSTALLED & SUPPLIED
★ ELECTRICAL PANELS
FOR TOP QUALITY SERVICE

**COMPUTER
INSTALLATION
SPECIALIST**

National Inspection Council for
Electrical Installation Contracting

NICEIC

APPROVED CONTRACTOR

★ INDUSTRIAL
COMMERCIAL
& DOMESTIC REWIRING

CONTACT:
ASHLEY J. BENNETT

★ INSTALLATIONS
& MAINTENANCE CONTRACTS
UNDERTAKEN

TELEPHONE: LUTON
(0582) 595702
269 Old Bedford Road,
Luton LU2 7BW

MARTIN AYRES CARPETS

Suppliers of:

Axminster Carpets, Carpets of Worth, Stoddards,
Wilton Royal, Remanants and Rugs Always
Available at Realistic Prices.

Home Service Available
Pattern Books to your Door

Free Estimates

Credit Terms (Written Details on Request)

Showroom at:-
614 Hitchin Road
Stopsley Village

LUTON 454184

24 HOUR ANSAPHONE

OFFICIAL JUNIOR HATTERS SPONSOR



GOING FORWARD

Tim Breacker shows his power and skill on the run as he bursts forward during our Zenith Data Systems Cup defeat at Crystal Palace on Monday

**DID YOU
KNOW THAT
LUTON
PRODUCED**



**BRITAIN'S LEADING
POWER TOOL
SPECIALISTS**

For a fully comprehensive stock of tools and accessories, expert advice, service and repairs, no one can beat Tek Power Tools for quality, professional attention and value for money.

Why not take advantage of the fact that your local power tool specialists are also Britain's best?

Tek Power Tools Ltd, Manor Road, Luton LU1 3HY
Telephone (0582) 417123 Telex 826109 Fax (0582) 454202

BOX OFFICE UPDATE

BARCLAYS LEAGUE DIVISION ONE

**Sheffield Wednesday v Luton Town
Saturday, December 9, 1989, kick-off 3pm**

Seats costing £7 for adults and £4 for Senior Citizens or Juniors are available from the ticket office for this match. There are no standing tickets available for this match. Seats available on the day.

**Arsenal v Luton Town
Saturday, December 16, 1989, kick-off 3pm**

Seats costing £6 will be available for this match. No reductions. Anyone wishing to stand at Highbury can pay £5 on the day.

**Luton Town v Nottingham Forest
Tuesday, December 26, 1989, kick-off 11.30am**

Please note that this fixture on Boxing Day has a morning kick-off time. The park-and-ride scheme, which came into operation this afternoon, will not be in operation on Boxing Day. The scheme will operate only on Saturdays and will be back in action on December 30 when Chelsea are the attractive visitors to Kenilworth Road. Normal guesting facilities on Boxing Day.

**F.A. Cup third round
January 6, 1990**

If we are drawn at home, the ticket arrangements will be: December 1989-Monday 18 to Saturday 23 Season Ticket Holders; Sunday 24 Closed; Monday 25 Closed; Tuesday 26 Season Ticket Holders (after match only); Wednesday 27 Members General Sale; Saturday 30 Members General Sale (after match only); Sunday 31 Closed; Jan 1990-Monday 1 Closed; Tuesday 2 to Saturday 6 Members General Sale. Further details will be announced later.

FORTHCOMING MATCHES AT KENILWORTH ROAD

Southern Junior Floodlit Cup

Luton Town v Arsenal
Tuesday, December 12, 1989
Kick-off 7.00p.m.

Ovenden Papers Football Combination

Luton Town v Norwich City
Saturday, December 16, 1989
Kick-off 2.00p.m.

Barclays League Division One

Luton Town v Nottingham Forest
Tuesday, December 26, 1989
Kick-off 11.30a.m.

VISIT THE SPORTS SHOP FOR CHRISTMAS GIFTS

Our Sports Shop in Oak Road is well stocked with a range of Christmas gifts to suit all our supporters. In addition to top-class leisure wear and sports wear, there are scarves, caps, pennants, badges, towels, sports bags, mugs, ties, calendars and a full range of club publications on sale. Do not miss your chance - drop in after today's match to order your gifts for Xmas.

**F.A. Youth Cup 2nd round replay
Luton Town v Arsenal**

Wednesday, December 6, 1989, kick-off 7pm

If the scores are level after extra time the result will be decided by the toss of a coin. We also play Arsenal in the Southern Junior Floodlit Cup here on December 12.

**CALL
SOCCERLINE
ON**

0898 700 273

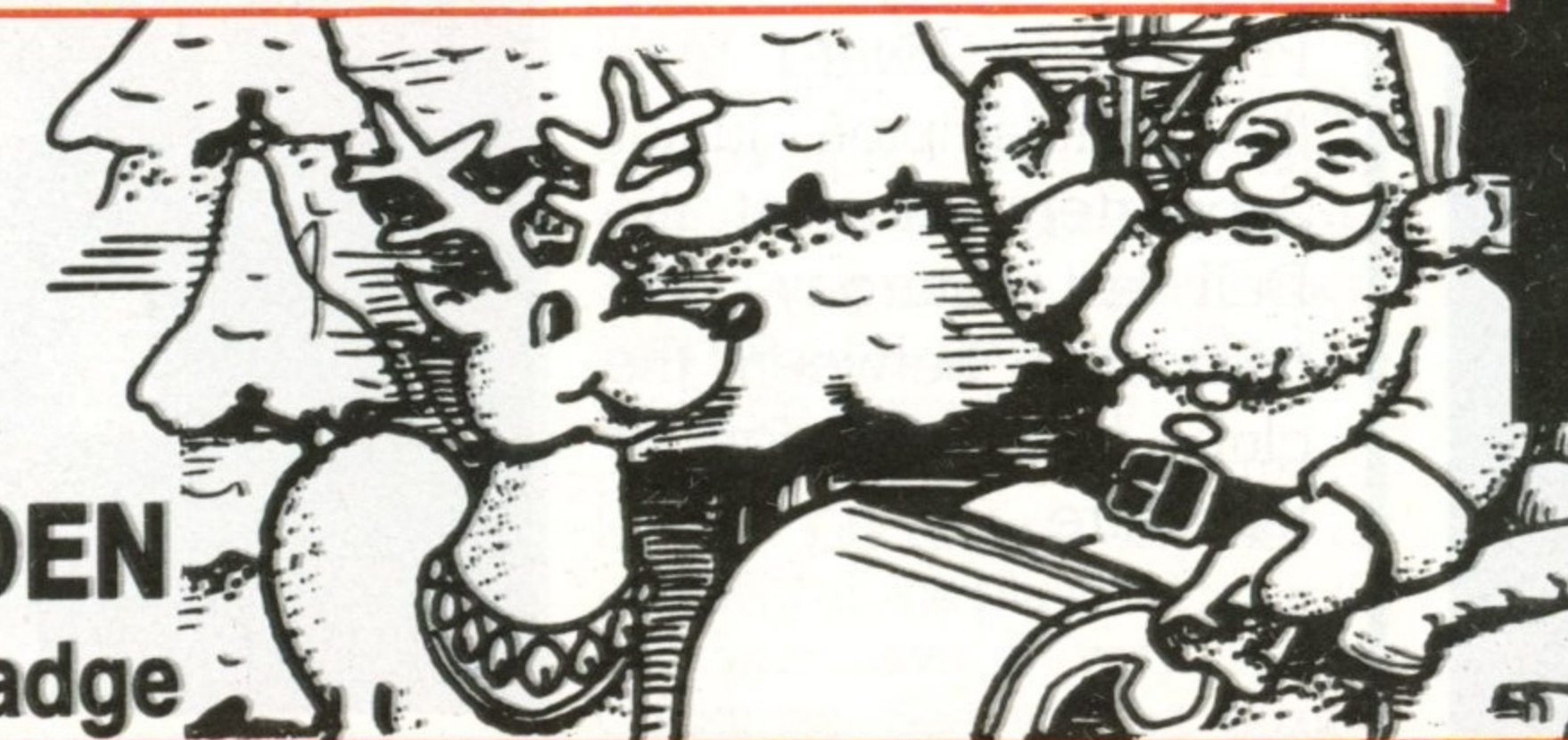
38p per min Peak
25p per min off Peak

*For all the latest news and
views from Luton Town*

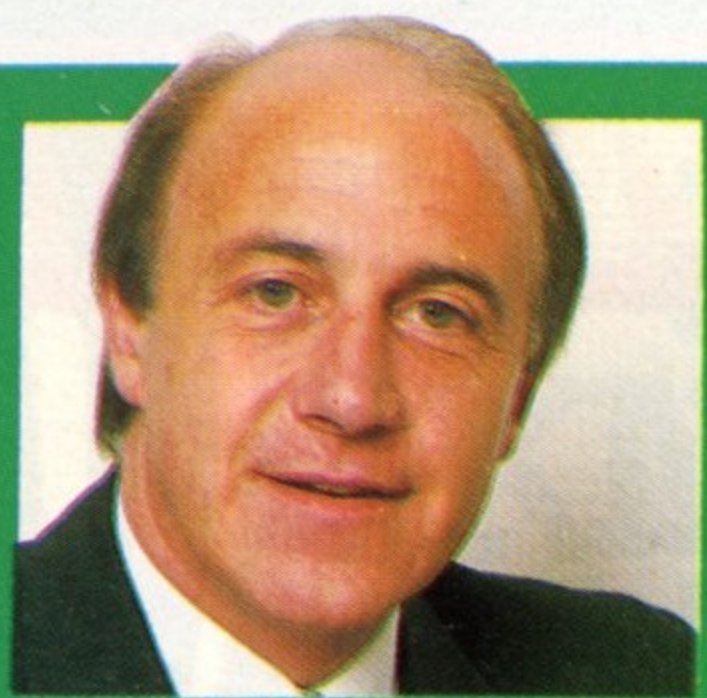
CHILDREN!

Come and see

SANTA in his
CHRISTMAS GARDEN
and collect your **FREE** badge



Luton Arndale Centre



by BILL TOMLINS

CAPACITY CROWD IN PROSPECT AS WE REMEMBER A FORMER OFFICIAL

Welcome to Tottenham Hotspur and our former players Mitchell Thomas and Paul Walsh. We have had a testing time and some very sad news in the two weeks since my last notes and I am sure both Mitchell and Paul will, like all of us, have felt deeply saddened by the death of our former club secretary John Wilkinson.

I worked alongside John here at Kenilworth Road for five very happy years and knew at first hand what a marvellous, warm and cheerful character he was. The great number of players, officials and representatives of the club past and present who attended his funeral showed the great affection and respect we all felt for him. He will be deeply missed by everyone in football.

We were very pleased with the hard core attendance from among our membership of 21,000 for the last home match against Manchester United when we decided to do away with the guessting procedure and put members first for such an attractive fixture.

The attendance, however, was not large enough to persuade us to continue with the policy again today for another exciting match for which, incidentally, all seats were sold in advance.

Earlier this week, as everyone will

know, we were involved in a controversial match at Crystal Palace. It has always been our policy to respect the referee's decision as final and we have our own strong internal disciplinary system at Luton. On this occasion, we await the referee's report with great interest.

The night after our senior team's disappointment in the Zenith Data Cup, our youth side went to Highbury and held Arsenal's youngsters to a well-deserved 2-2 draw. Our team included Alan O'Sullivan who had to turn down the chance of Republic of Ireland international honours by playing that night.

youth team

The replay will take place here at Kenilworth Road on Wednesday, December 6, kick-off 7pm. We have a very talented and hard-working young team and I do urge you to come along and give them your support.

Finally, our synthetic pitch has been undergoing tests by En Tout Cas this week in conjunction with the Football League. The tests have established that our new surface, relaid in the summer, passes all the stringent conditions of the Winter-bottom Report.

SCOUTING TALK



• Ron Howard, our chief scout, was the guest speaker at last week's meeting of the Luton Town Supporters' Club. Next week, on Monday, Danny Wilson and Roy Wegerle are due at the club as guest speakers. Details on page 6.

•Friendship rewarded:

Bev Tyler and Donna Wells, on behalf of our Junior Hatters, are pictured receiving a special Friendship Award from the Southampton Junior Supporters Club at the Dell last Saturday. The friendship between the clubs is a great sign for the future.



•Ball sponsor: David Boniface of J & B Business Forms was our match ball sponsor against Manchester United. He is pictured with Iain Dowie.



•Top Hatter: Danny Wilson was our goalscorer and our sponsors' man of the match against Manchester United. He is pictured with our chairman Brian Cole.



•Big match line-up: United and England captain Bryan Robson and our own skipper Danny Wilson are pictured with mascot Julian Dealey before the United clash two weeks ago.

CAPTAIN'S DIARY



DANNY WILSON

UNPRINTABLE

If I were to tell you my real feelings last Monday night after being sent off against Crystal Palace I am sure they would be unprintable. I was furious and so were all the team after what had happened.

But that seems to be the way things are going at the moment. We have had a terrible run with injuries and had a reshuffled team out when it happened. And I thought we were doing well and looking very comfortable at 1-0 up in the first half.

Important games

To be honest, I could not believe what had happened. I had never been sent off previously since I was 17 and David Preece had never been sent off before in his career. You can only imagine what we felt.

Now we have a run of very important league games to concentrate on starting today against Spurs. We need some points after the last few weeks and, once again, your vocal support can really help. The lads really do appreciate it.

This is the last home match before December 25, so on behalf of all the players I hope all our fans have a very Happy Christmas. See you on Boxing Day.

EAGLES GROUNDED BY WILSON
Crystal Palace 1 Luton Town 1

The Town extended their unbeaten run to four matches and in the process took their third point from four visits to London in the Barclays League Division One this season when they held Crystal Palace 1-1 on their own ground on November 11.

A second-half close-range equaliser by captain Danny Wilson, after a thunderous shot by Kingsley Black had rebounded from the woodwork, secured a well-deserved point. With better luck, it might have been two.

Ill fortune had reared its ugly head again in the first half when David Beaumont became the third established senior central defender this season to go down with a long-term injury. He limped off after only 24 minutes to join Darron McDonough and Graham Rodger on the treatment table.

John Dreyer moved inside to centre-half alongside Marvin Johnson with Richard Harvey coming on at left-back and the emergency back four did an excellent job in inspiring a recovery from Mark Bright's 14th minute opening goal.

The equaliser came after 58 minutes when Black's tremendous shot was tipped on to the bar by Brian Parkin and Alex Dyer, in attempting to clear, sliced the ball against the woodwork again. It fell invitingly for Wilson to score his fourth goal of the season.

Teams: Crystal Palace – Parkin, Pemberton, Dennis, Gray, Hopkins, Dyer, McGoldrick, Thomas, Bright, Wright, Pardew.

Luton Town – Chamberlain, Breacker, Dreyer, Wilson, Johnson, Beaumont, (Harvey 24), Williams, Dowie, Elstrup, (Wegerle 72), Kennedy, Black.

Referee: G. Courtney (Spennymore).

Attendance: 8,000

1st Team ACTION



• Eagles winged: Iain Dowie, Lars Elstrup, Danny Wilson and Mick Kennedy are pictured in action at Selhurst Park on November 11 when Danny Wilson's goal secured us a point from a 1-1 draw. Pictures by Josh Levy of Apex Photography of Milton Keynes.

The **Hottest NEWS**
 The **Best MUSIC**
The Hot FM 97.6
 828
Chiltern Radio
 in Herts, Beds & Bucks
24 Hours a day!

**NEED A SKIP?
 TRY US FIRST**

MINI
 SKIPS

BUILDERS'
 SKIPS

F & R CAWLEY LTD

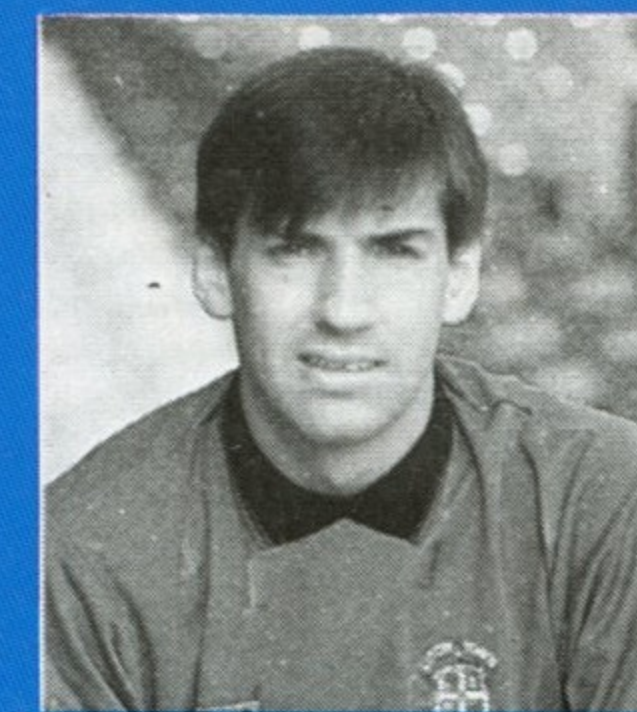
Contact 57, Wingate Road, Luton, Beds.

**ON
 LUTON
 572525**

**MILTON
 KEYNES
 371525**

**&
 BEDFORD
 781362**

**Top
 HATTER**



ALEC CHAMBERLAIN

ALEC CHAMBERLAIN FACT FILE

Born: March, Cambridgeshire 20.8.64
 First club: Ipswich Town.
 Other clubs: Colchester United and Everton
 League debut: Colchester v Hartlepool,
 2.1.82 (4-1)
 Joined Luton Town: July, 1988
 Luton Town league debut: Luton Town v Coventry
 City 15.4.89 (2-2)

Clean sheet needed

"The less said about Monday night's game the better," admitted our goalkeeper Alec Chamberlain on Tuesday morning. "To say we were not happy at some of the decisions would be putting it mildly. When we were down to nine players, it was always going to be a bit of a lottery, but everything went against us as well."

After three successive defeats and 13 goals conceded, Alec remained remarkably calm and positive. He admitted he was disappointed that the early-season security in the Town defence had temporarily departed, but felt sure it would return soon.

"We have to start getting clean sheets again and quickly," he said. "It is no criticism of the lads who have come in and played in the defence in the last few weeks, but we have not had a settled side and that does make a difference."

"Earlier in the season we had a good run of clean sheets and that is what we need to

concentrate on again now. I am sure we will do it and be a very difficult side to beat again."

Alec has had the benefit of advice and coaching from some very experienced goalkeepers during his football career. But, he admitted, he only became a goalkeeper by chance.

"When I was younger I was always an outfield player and I only went in goal by accident when our first team goalie broke his leg. I said I would give it a go and I did quite well...I have stayed there ever since."

At Ipswich, Alec's first club, he was unlucky and broke a wrist, but he had the benefit of coaching from veteran John Jackson. At his next club, Colchester, he was under the wing of the equally experienced Mick Walker and learned even more.

Specialist work

"I didn't miss a game in four years at Colchester," said Alec. "And touch wood, I have steered clear of any serious injuries since the wrist at Ipswich. The last thing we want here now is any more injuries anyway... We need an injury-free run."

At his third professional club, Alec was able to do specialist goalkeeping work with Everton's Welsh international goalkeeper Neville Southall and had regular coaching sessions with England's 1966 World Cup-winning goalkeeper Gordon Banks.

"That was a terrific experience for me and I really enjoyed it," he said, "but I did not want to stay in the reserves forever. Now, after winning a place in the first team and dislodging Les, I know I have to stay on my toes. It is never easy."



ALEC CHAMBERLAIN

LUTON TOWN SPORTS SHOP THE IDEAL CHRISTMAS GIFTS FOR ALL THE FAMILY



UMBRO REPLICAS AVAILABLE IN CHRISTMAS PRESENTATION BOXES

STYLISH Ladies and Gents Tracksuits

Childrens Tracksuits with 2 pairs of coordinating Tracksuit bottoms

Childrens Dressing Gowns and Slippers

Sweatshirts and Rugby Shirts

Match Footballs and Umbro Football Boots (in all sizes)

STOCKING FILLERS: Pencil Cases, Clocks, Videos, Scarves, Caps,

Coffee mugs, Towels, Key Rings

See our selection on display in the shop at the top of Oak Road or take advantage of our new mail order facility. Tel: (0582) 411622.

Access or Visa accepted

SOCCERLINE 0898 700 273 38p per min Peak
25p per min off Peak



BARCLAYS

Junior Hatters

ONLY A FEW TICKETS LEFT FOR CHRISTMAS PARTY

- Roll up! Roll up! Only a few tickets remain to our Junior Hatters Christmas party. It is going to be held in the Holy Ghost Church Hall in Westborne Road, Luton, on Monday, December 11, 7pm-9pm.
- You can book your tickets this afternoon if you go to the Sports Shop in Oak Road after the match. Remember to take your membership card with you.
- It was great last weekend to see so many Junior Hatters meeting us off the coach at Southampton. I hope you enjoyed the match as much as you did playing against the Junior Saints in the morning. The result was a big disappointment but there were plenty of goals for the crowd.
- Did you know we were given a special award at The Dell last Saturday? Turn to page 14 to read the story and see a special picture.
- Today we welcome Spurs and two of our former favourite Hatters, Mitchell Thomas and Paul Walsh to Kenilworth Road. Give them a good hand - and then cheer us to victory!
- Our lucky Junior Hatters membership number today is 170004. The winner is Simon Woolf. Well done, Simon. You have won two free tickets to one of our home matches, but you must remember to take your membership card with you to show Bev Tyler in the Sports Shop in Oak Road when you collect them.
- The lucky number in our other draw this week is 170074 and the winner is Alexander Boyd. Congratulations, Alex, you have won a sports bag sponsored by Spearman International.

WISHING YOU A HAPPY CHRISTMAS

• Did you know this is our last home match before Christmas? Well it is. So, I wish you all a very happy Christmas. And don't forget to come along and support us on Boxing Day when we are at home to Nottingham Forest with an early kick-off at 11.30am.

Kingsley Black

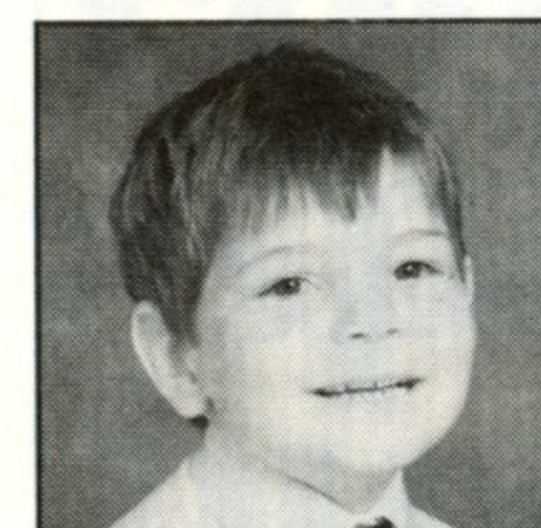
JUNIOR QUIZ

1. Name the club Peter Anderson was sold to when he left Luton Town
2. What is Lutons record attendance?
3. Which football club is nearest to the River Mersey?
4. Name the club Malcolm Macdonald joined when he left Luton Town
5. What year did Luton move to Kenilworth Road?
6. Name the club that Chris Nicholl was transferred to when he left Luton.

The prize is a football game called Quizball, kindly donated by Keelanne Promotions International Ltd. All entries by Friday, December 15th. In the event of more than one correct entry, the first one out of the hat will be the winner.

Answers on a postcard please to Junior Quiz, c/o Luton Town F.C., Kenilworth Road Stadium, 1 Maple Road, Luton, Beds LU4 8AW.

MASCOT

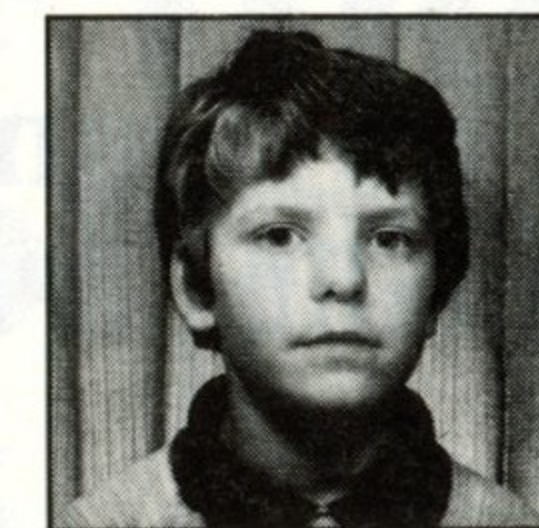


Paul McCrory

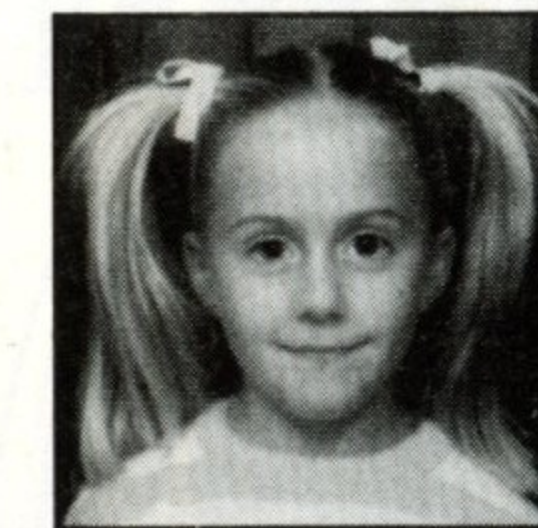
ESCORTS



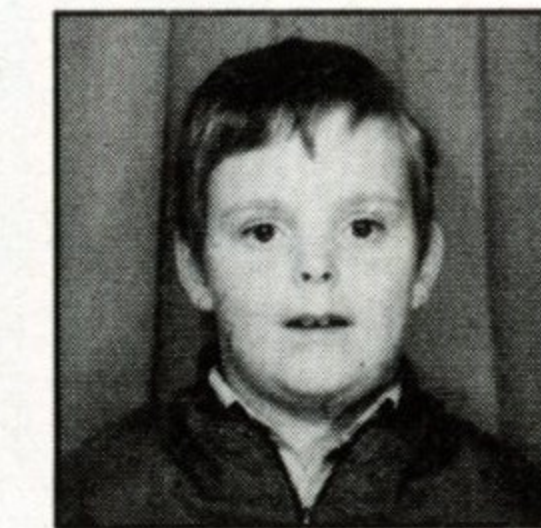
Daniel Aunett



David Rolt



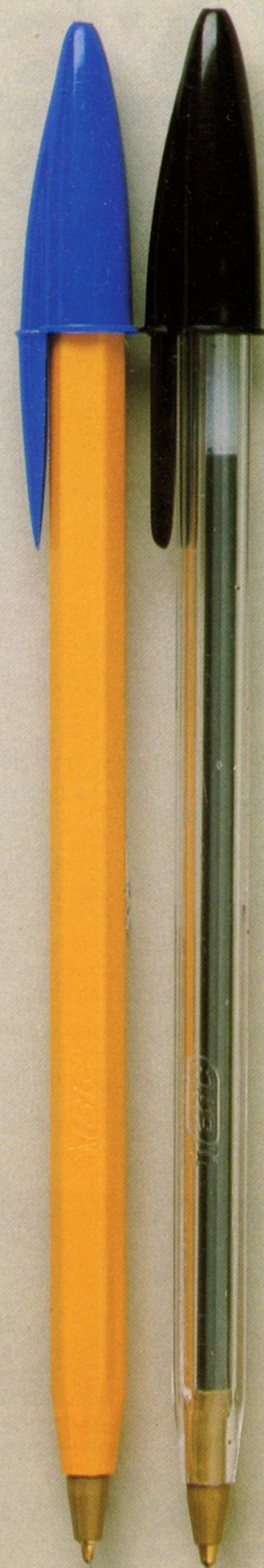
Sharon Bailey



Steven Dove



The **Hottest NEWS**
The **Best MUSIC**
24 Hours a day!



OPTIONS

If you find that you are paying more than £2.99 for a box of 50 Bic pens - it could be that your company is using the wrong stationery supplier.

0462·421431

**The Competitive Edge
Quality - Price - 24hr Service**

The Ultimate Stationery Purchasing Decision...



BY WENDY GRZYBOWSKA

COMMERCIALLY

VAUXHALL AND LUTON ARE LOOKING UP WITH EXCITING FUTURE PLANS

As a big supporter of Luton Football Club, Vauxhall, who are sponsoring today's match and match ball, have been able to highlight their active role in the community at large in recent years.

The recently-launched Luton initiative mirrored for the town what Vauxhall aims for in its own facilities - to emphasise the positive and show a fresh and lively face that can only enhance the image of the whole area.

Vauxhall are engaged in a massive £50 million redevelopment of their Luton site... old, dilapidated buildings will disappear to be replaced by modern facilities that more truly reflect the company's high technology operations.

There will be extensive landscaping and developers will turn surplus land into new business parks, light industrial complexes and non-food retail outlets to provide a new environment.

It is part of the new era. Luton's Looking Up. Vauxhall's Looking Up - with record sales and the Luton-built Cavalier close to becoming Britain's top selling car. We wish Vauxhall and all their guests an entertaining afternoon.

Our match day boxes today are taken by Prestige Cleaning Services Ltd and Legal and General Assurance Society Ltd. I hope they enjoy their day at Kenilworth Road.

The Family Enclosure is sponsored today by St Albans District Council. The council is promoting a star-studded pantomime Jack and the Beanstalk at the City Hall, St Albans, this Christmas. The show includes Suzanne Dando, Geoff Capes and Bernie Winters and runs twice daily for three weeks from December 14 (Box Office 0727 44488).

Boxing Day Feast

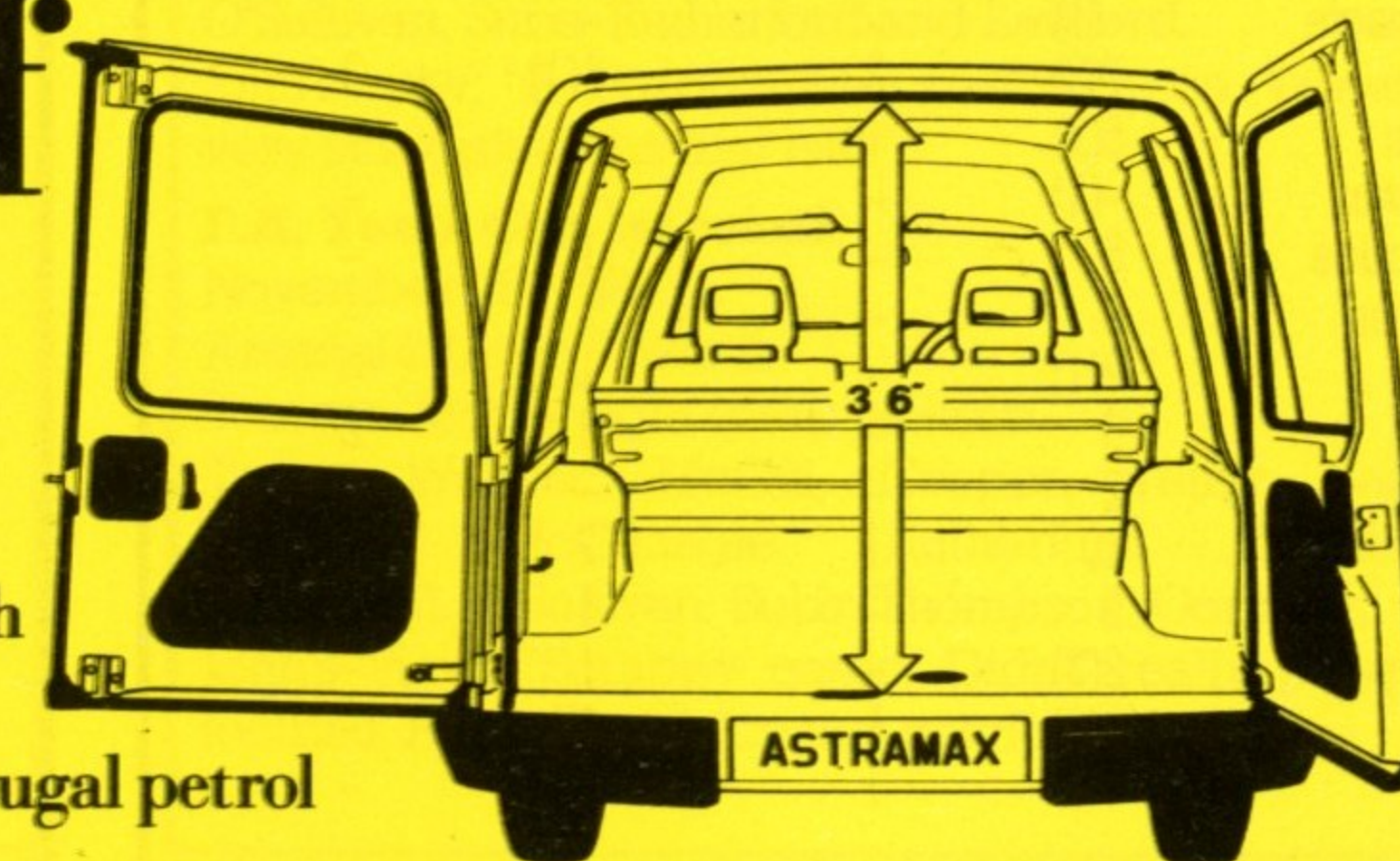
We have arranged a special day for family and friends on Boxing Day when we meet Nottingham Forest with an 11.30 am kick-off. It includes a chance to see behind the scenes, meet the players and enjoy a festive hot breakfast before watching the match from the main stand. Prices are £57.50 (adults) and £34.50 (children). For more information, contact me at the club on Luton 411622.

SPEAKING

Today's MATCH SPONSOR

Astramax operators consider the loftier aspects of business.

Astramax looks better now than ever. With extra height doors that open through 180° giving easy access to a full 82 cu.ft. of load space, great road holding and a frugal petrol or diesel engine, Astramax adds up to a van that looks good on paper and speaks volumes about your company.



BEDFORD ASTRAMAX
BACKED BY THE WORLDWIDE RESOURCES OF GENERAL MOTORS

RESERVE

OVENDEN PAPERS FOOTBALL COMBINATION 1989/90

| Date | Opponents | Result | Date | Opponents | Result |
|---------|------------------------|--------|--------|----------------|--------|
| 1989/90 | | F-A | 1990 | | F-A |
| Aug 19 | Arsenal | 6-1 | Jan 2 | QPR | |
| Sept 2 | Reading | 2-0 | Jan 6 | West Ham | |
| Sept 9 | Tottenham | 0-4 | Jan 10 | Oxford | |
| Sept 23 | Southampton | 1-0 | Jan 13 | Wimbledon | |
| Sept 30 | Ipswich Town | 3-2 | Jan 16 | Portsmouth | |
| Oct 10 | Stotfold (BPC1) | 4-4 | Jan 27 | Brighton | |
| Oct 20 | Norwich City | 0-2 | Feb 3 | Millwall | |
| Oct 28 | Watford | 3-3 | Feb 13 | Chelsea | |
| Oct 31 | Swindon | 0-2 | Feb 17 | Oxford | |
| Nov 7 | Millwall | 0-0 | Feb 21 | Fulham | |
| Nov 11 | West Ham | 1-1 | Feb 28 | Crystal Palace | |
| Nov 14 | Stotfold (BPC1R) | 5-0 | Mar 3 | Southampton | |
| Nov 25 | Fulham | 5-0 | Mar 10 | Swindon Town | |
| Nov 29 | Brighton | | Mar 13 | Wimbledon | |
| Dec 2 | Watford | | Mar 21 | Ipswich | |
| Dec 12 | Charlton A | | Apr 3 | Portsmouth | |
| Dec 16 | Norwich | | Apr 7 | QPR | |
| Dec 19 | Tottenham | | Apr 11 | Reading | |
| Dec 22 | Vauxhall Motors (BPC2) | | Apr 18 | Crystal Palace | |
| | | | Apr 21 | Arsenal | |
| | | | May 1 | Charlton A | |
| | | | May 8 | Chelsea | |

BPC = Bedfordshire Premier Cup

APPEARANCES AND GOALSCORERS

| | Football Combination | | Beds Premier Cup | |
|------------|----------------------|-----|------------------|-----|
| | Aps | Gls | Aps | Gls |
| Allpress | 9(1) | - | 2 | - |
| Brown | 1(1) | - | - | - |
| Cobb | 3(2) | 1 | 1(1) | - |
| Cooke | 4 | 2 | - | - |
| Crawshaw | 7(2) | 4 | 2 | 1 |
| Dowie | 2 | - | - | - |
| Farrell | 1 | 2 | - | - |
| Gray | 5 | 3 | 1 | 2 |
| Harvey | 1 | - | - | - |
| Hughes | 7(1) | - | 1 | 1 |
| Jackson | 3 | - | 1 | - |
| James | 9 | 1 | 1 | - |
| Johnson | 4 | 1 | 1 | - |
| McGonagle | -(1) | - | - | - |
| Nogan | 7(2) | 2 | 1(1) | 3 |
| O'Brien | 5(1) | 1 | 1 | - |
| O'Sullivan | -(1) | - | - | - |
| Pembridge | 5 | - | 1 | - |
| Peterson | 2 | - | 1 | - |
| Poutch | 9(1) | - | 1(1) | - |
| Rees | 8 | - | 2 | 2 |
| Rodger | 2 | - | - | - |
| Scott | 10 | 1 | 2 | - |
| Sealey | 9 | - | 1 | - |
| Shanley | 2(3) | - | 1 | - |
| Telfer | 1(1) | 1 | 1(1) | - |
| Tighe | 6 | 1 | 1 | - |



• Tim Allpress made a very impressive senior debut at Selhurst Park last Monday.

OVENDEN PAPERS FOOTBALL COMBINATION

| | P | W | D | L | F | A | Pts |
|-------------------|-----------|----------|----------|----------|-----------|-----------|-----------|
| Tottenham Hotspur | 17 | 13 | 1 | 3 | 49 | 23 | 40 |
| Millwall | 16 | 11 | 3 | 2 | 29 | 14 | 36 |
| Arsenal | 16 | 10 | 2 | 4 | 41 | 31 | 32 |
| Chelsea | 13 | 8 | 2 | 3 | 34 | 18 | 26 |
| Norwich City | 14 | 8 | 1 | 5 | 21 | 18 | 25 |
| Swindon Town | 15 | 8 | 0 | 7 | 26 | 26 | 24 |
| Oxford United | 15 | 7 | 2 | 6 | 30 | 23 | 23 |
| Wimbledon | 15 | 6 | 5 | 4 | 25 | 20 | 23 |
| QPR | 14 | 7 | 2 | 5 | 29 | 26 | 23 |
| Brighton & Hove | 15 | 7 | 2 | 6 | 26 | 27 | 23 |
| Ipswich Town | 15 | 6 | 3 | 6 | 26 | 28 | 21 |
| Luton Town | 11 | 5 | 3 | 3 | 21 | 15 | 18 |
| Crystal Palace | 17 | 4 | 5 | 8 | 21 | 24 | 17 |
| Charlton Athletic | 15 | 4 | 3 | 8 | 26 | 32 | 15 |
| Portsmouth | 12 | 3 | 6 | 3 | 13 | 19 | 15 |
| West Ham | 16 | 3 | 5 | 8 | 29 | 36 | 14 |
| Watford | 13 | 2 | 4 | 7 | 22 | 30 | 10 |
| Southampton | 16 | 1 | 5 | 10 | 16 | 28 | 8 |
| Reading | 14 | 1 | 4 | 9 | 17 | 38 | 7 |
| Fulham | 11 | 2 | 0 | 9 | 8 | 33 | 6 |
| | 25 | 11 | 89 | | | | |

SOUTH EAST COUNTIES LEAGUE

Division Two 1989/90

| | | | | |
|---------|---------------------|-----|--------|----------------|
| Aug 19 | Crystal Palace | 0-4 | Jan 6 | Crystal Palace |
| Aug 26 | Tottenham | 2-0 | Jan 13 | Tottenham |
| Sept 2 | Reading | 1-0 | Jan 20 | Reading |
| Sept 9 | Reading (LC) | 2-2 | Jan 27 | Northampton T |
| Sept 13 | Aston Villa (SJFC1) | 1-0 | Feb 3 | Bristol Rovers |
| Sept 18 | Reading (LC) (R) | 3-2 | Feb 10 | Southampton |
| Sept 25 | Northampton T | 1-0 | Feb 17 | Bristol City |
| Sept 30 | Southampton | 2-2 | Feb 24 | Brighton |
| Oct 7 | Swindon Town | 2-1 | Mar 3 | Wimbledon |
| Oct 14 | Bristol Rovers | 2-2 | Mar 10 | Colchester Utd |
| Oct 21 | Norwich City (LC) | 4-1 | Mar 17 | Swindon Town |
| Oct 23 | Chelsea (SJFC2) | 1-0 | Mar 24 | Bournemouth |
| Oct 28 | Bristol City | 1-0 | Mar 31 | Aldershot |
| Nov 11 | Bournemouth | 3-0 | Apr 7 | Oxford |
| Nov 18 | Wimbledon | 1-1 | Apr 14 | Brentford |
| Nov 25 | Aldershot | 3-3 | Apr 21 | Brighton |
| Nov 28 | Arsenal (FAYC2) | 2-2 | | |
| Dec 2 | Colchester | | | |
| Dec 6 | Arsenal FAYC2R | | | |
| Dec 12 | Arsenal (SJFC3) | | | |
| Dec 16 | Brentford | | | |

| | SECL | | Lge Cup | | SJFC | |
|------------|------|-----|---------|-----|------|-----|
| | Aps | Gls | Aps | Gls | Aps | Gls |
| Brown | 10 | 5 | 3 | 1 | 2 | 0 |
| Campbell J | 7(3) | 4 | 1 | 1 | 1 | 0 |
| Campbell M | 1 | - | - | - | - | - |
| Cooper | 7 | - | 1 | - | 1 | - |
| Gillard | 2 | - | 1 | - | 1 | - |
| Gormley | 4(5) | 1 | 2(1) | 2 | -(2) | 1 |
| Jackson | 10 | 3 | 3 | - | 2 | 1 |
| Lawford | 4(6) | - | 2 | 1 | 1 | - |
| McGill | 11 | - | 3 | - | 2 | - |
| McGonagle | 10 | 1 | 3 | - | 2 | - |
| Meldrum | 2 | - | - | - | - | - |
| Nolan | 2(1) | - | 1(1) | - | 1 | - |
| O'Sullivan | 10 | 2 | 3 | 1 | 2 | - |
| Rogers | 3 | - | -(1) | - | 1 | - |
| Rutherford | 3(6) | - | 2(1) | 1 | 2 | - |
| Salton | 8 | 1 | 1 | 1 | 1 | - |
| Telfer | 10 | - | 3 | 1 | 2 | - |
| Thompson | 6 | - | -(1) | - | -(1) | - |
| Watkiss | 11 | - | 3 | - | 2 | - |

LATEST LEAGUE TABLE

| | P | W | D | L | F | A | Pts |
|--------------------------|-----------|----------|----------|----------|-----------|-----------|-----------|
| Crystal Palace | 13 | 10 | 22 | 1 | 30 | 10 | 22 |
| Wimbledon | 14 | 7 | 3 | 4 | 29 | 14 | 17 |
| Oxford United | 10 | 8 | 1 | 1 | 26 | 12 | 17 |
| Southampton | 16 | 6 | 4 | 6 | 22 | 21 | 16 |
| Colchester United | 16 | 7 | 1 | 8 | 29 | 30 | 15 |
| Brentford | 11 | 6 | 2 | 3 | 28 | 18 | 14 |
| Brighton & Hove | 12 | 7 | - | 5 | 26 | 15 | 14 |
| Northampton Town | 12 | 6 | 2 | 4 | 27 | 19 | 14 |
| Luton Town | 10 | 5 | 3 | 2 | 14 | 11 | 13 |
| Swindon Town | 13 | 5 | 3 | 5 | 17 | 20 | 13 |
| A.F.C. Bournemouth | 13 | 4 | 4 | 5 | 25 | 23 | 12 |
| Reading | 12 | 5 | 2 | 5 | 15 | 13 | 12 |
| Tottenham Hotspur | 15 | 5 | 1 | 9 | 20 | 32 | 11 |
| Bristol City | 13 | 2 | 3 | 8 | 11 | 21 | 7 |
| Bristol Rovers | 12 | 3 | 1 | 8 | 16 | 31 | 7 |
| Aldershot | 12 | - | - | 12 | 9 | 53 | - |

FROM THE BENCH



With John Faulkner, Jim Ryan and Terry Mancini

Bedfordshire Premier Cup first round replay

November 14, 1989

Luton Town 5 Stotfold 0

Scorers: Rees, Hughes, Crawshaw, Nogan (2)

Team: Sealey, Poutch, Pembridge, Rees, Allpress,

Jackson, Hughes, Crawshaw, Nogan, Scott, Tighe.

Subs: Cobb, Telfer.

Jim's view: "A nice workout in a game we dominated.

We should have scored more goals."

Ovenden Papers Football Combination

November 25, 1989

Luton Town 5 Fulham 0

Scorers: Crawshaw 2, Telfer, Cooke, Cobb.

Team: Sealey, Poutch, Pembridge, Telfer, Allpress

Jackson, Cooke, Hughes, Gray, Crawshaw, Cobb.

Subs: Scott and Gormley.

Jim's view: "Should have scored more. Easy game

against a young team."

South East Counties League Division Two

November 25, 1989

Aldershot 3 Luton 3

Scorers: McGonagle, Brown and J. Campbell

Team: Watkiss, McGill, Cooper, Thompson, Salton, M.

Campbell, McGonagle, Meldrum, Brown, J. Campbell,

O'Sullivan. Subs: Rutherford and Lawford.

John's view: "A disappointing performance. We were

very sluggish in the first half."

F.A. Youth Cup 1st round

November 28, 1989

Arsenal 2 Luton Town 2

Scorers: McGonagle (pen) Jackson.

Team: Watkiss, McGill, Cooper, Telfer, Salton,

Jackson, McGonagle, Rutherford, Meldrum,

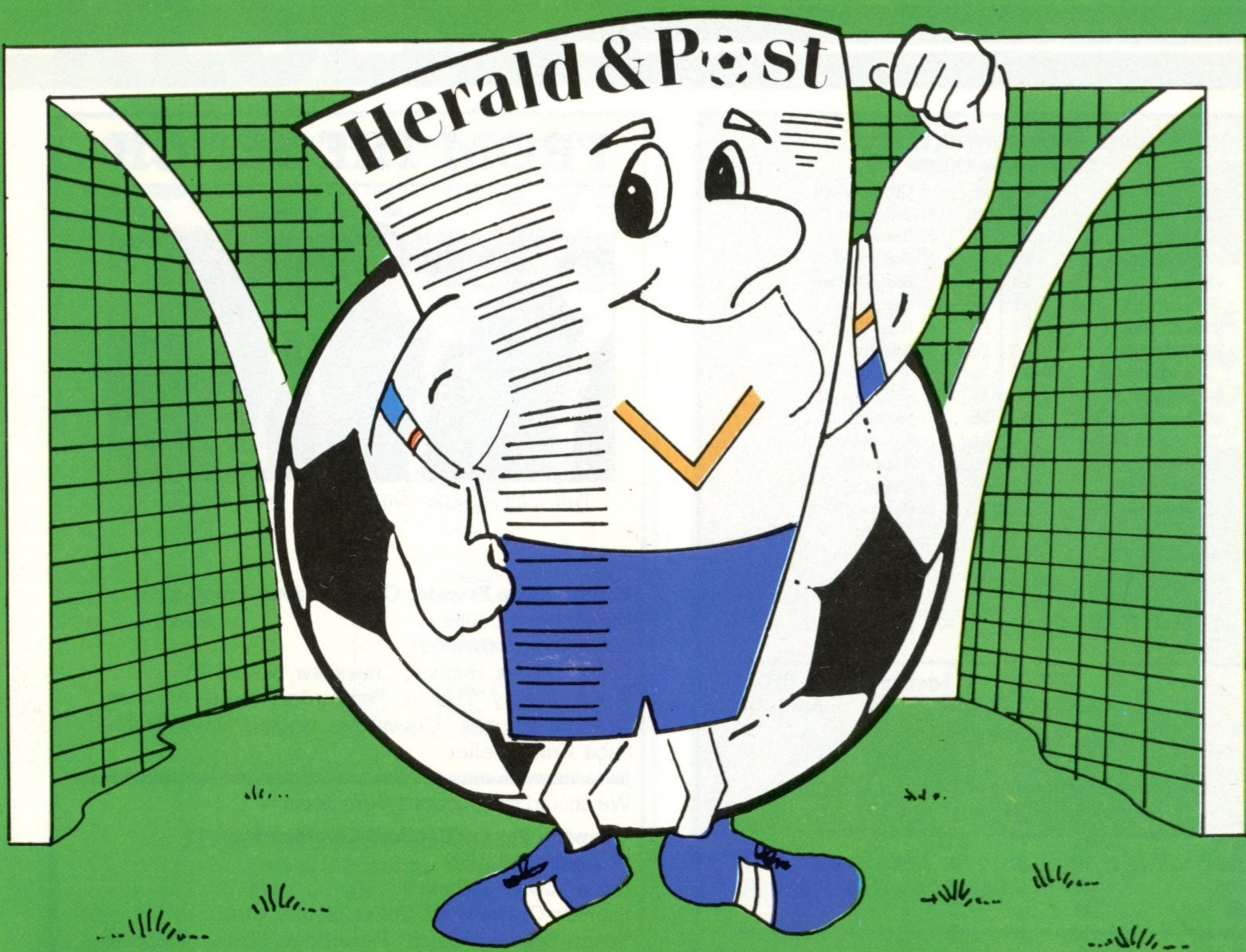
Campbell, O'Sullivan. Subs: Thompson, Gormley.

John's view: "Scrappy game. Didn't really play our

football. But we held Arsenal comfortably."

& YOUTH

JOIN THE WINNING TEAM



Herald & Post Line-up

READ THEIR NEWS AND VIEWS EACH WEEK IN

LUTON & DUNSTABLE

Danny Wilson, Kingsley Black, Lars Elstrup

BEDFORD

Tim Breacker

MILTON KEYNES

Alec Chamberlain

STEVENAGE/HATFIELD

Richard Harvey, Iain Dowie

AYLESBURY

Marvin Johnson

TRING

Julian James

LEIGHTON BUZZARD

David Preece

HEMEL HEMPSTEAD

Roy Wegerle

ST ALBANS/HARPENDEN

Mick Harford

The Best for News and Sport Tel: LUTON 38981
The Best for Advertising Tel: LUTON 401234
Britain's Free Newspaper THE Herald & Post

ITALIA '90 IS PAUL'S SPECIAL ASSIGNMENT

By Tim Collings

Next year's World Cup finals in Italy may not be graced by any of our current crop of international talent, but that does not mean we will be entirely without Lutonian interest in the finals if one of our most popular former players has his way.

Paul Elliott, currently enjoying his football with Glasgow Celtic in the Scottish Premier Division, certainly believes he deserved a chance of proving to England manager Bobby Robson that he warrants at least a place in the squad for Italia '90.

A former England under-21 international during his time at Kenilworth Road, Paul looked assured of making smooth progress to the senior squad before a broken leg brought his career to a halt. Steve Foster was signed and, although Paul fought back for his first team place after recovering, it was soon clear that their former Charlton man's days as a Hatter were over.

Having established himself as a favourite after 66 appearances and four goals for the Town, Paul moved on to Aston Villa and then, in 1987, to Pisa in Italy. There he created a name as one of the most athletic and quick defenders in the peninsula, but only once attracted a visit from the England manager.

"Mr Robson came out to watch me but that is as far as it went," said Paul. "I hope now that I'm back in Britain I can raise my profile again and get selected. Scottish football is really blossoming and I had no qualms about playing there

especially with a big club like Celtic.

"In England, the First Division has only four or five top clubs but the Scottish Premier League is much more competitive and much tighter."

Paul joined Celtic last close season and, after shaking off an early season injury, has started to capture the imagination of the Parkhead fans in just the same way he had the supporters in Italy for the previous two years.

The Italian experience obviously gave Paul a chance to learn all about man-to-man marking and the highly-technical style of play which has given the Serie A its reputation as the best league in the world, but he fears such qualities – and his intimate knowledge of Italy and the Italians themselves – are unlikely to help him into the England team.

"Both Terry Butcher and Des Walker have been very good," he conceded. "They haven't conceded any goals during the World Cup and this is a fine record. But I'm only 25 and I'm not going to give up hope. Now I am playing for Celtic that should really help my cause."

Paul, of course, is not the only former Hatter of recent years to find his way abroad into European football. Ricky Hill is currently in France with Le Havre and Brian Stein with Caen (both enjoying good seasons) while Ashley Grimes has gone to Spain where he has teamed up with former Eire team-mate Kevin Moran at Osasuna of Pamplona.



• Paul Elliott in action against Birmingham City in November 1983.

OUR TEAM ALSO
COVERS BUSINESS
EVERYWHERE.



YOU'RE
BETTER OFF
TALKING TO
BARCLAYS
MEMBER OF IMRO

We know it's teamwork that counts, so come down to see our squad for the back-up your business needs.

TAKE YOUR PIC!



• Lars Elstrup sends in a cross from the left during last weekend's 6-3 defeat by Southampton at the Dell. Lars, John Dreyer and Kingsley Black were our goalscorers.



• David Preece goes close to sliding the ball home at the Dell last Saturday.

LUTON & DISTRICT

**CHRISTMAS SHOPPING
YOUR FAST & FREQUENT LONDON LINK**

757

LUTON TOWN-LONDON

£3.00 SINGLE – £4.50 DAY RETURN – £5.50 PERIOD RETURN

LUTON TOWN-LONDON

£4.00 SINGLE – £5.00 DAY RETURN – £6.00 PERIOD RETURN

CLOSED CIRCUIT TELEVISION



The first televised football match, 1937

Now every Football League ground is equipped with television cameras.

The Football Trust has installed Closed Circuit Television systems at more than 110 British grounds. The cameras have a range of 150 metres and immediate close-up prints can be produced. Within minutes of an incident offenders can be identified and arrested with film made available as evidence in court. CCTV is the most effective anti-hooligan measure inside football grounds and the programme has been extended to include portable systems.

CCTV is only one of The Football Trust's many initiatives. Each year it receives over £9.5 million from the Spotting-the-Ball competition run by Littlewoods, Vernons and Zettors and spends it on projects that benefit all levels of the game throughout the United Kingdom.



•Eyes on the ball: Iain Dowie concentrates hard as he takes control and prepares to set up another Town attack at the Dell last weekend.

OFF THE RECORD

HOW FAMILIARITY BRED CUP CONTEMPT

By **Roger Wash**

Although Luton Town has been playing in the F.A. Cup since their formation in 1885, Tottenham, formed three years earlier, did not enter the competition until 1894.

Both the Town and Spurs had entered at the 1st qualifying round stage and after such sides as West Herts (now Watford), Wolverton and St Albans had been seen off, the two teams met in the fourth qualifying round in North London.

Although the first game finished level at 2-2, the superior fitness of the Town showed in the replay as the amateurs from Tottenham were soundly beaten 4-0.

"Tottenham's sometimes laboured movements in the second half proved they were not so well trained a side as the winners," wrote one reporter with the understatement of the time.

Revenge was sweet, however, for the following season the two teams met again at the first stage of the competition. This time Tottenham caused one of the upsets of the day in winning 2-1 at Dallow Lane.

"Thousands outside Luton I am sure looked twice at the figures in cold print and half suspected that the telegraph clerk had been playing a joke," wrote the Luton News, pointing out that Spurs played without their influential skipper who had fallen downstairs the previous Thursday.

Obviously someone at the F.A. felt the two sides were evenly matched and made sure they met again in 1896-97, but this time the Town won 3-0 to progress to the First Round proper and a tie against then-mighty West Bromwich Albion.

OUR LAST FIVE MEETINGS AT KENILWORTH ROAD

| | | |
|---------|----------|---|
| 1988/89 | 28/3/89 | Luton 1 (Foster) Tottenham 3 Att: 11,146 |
| 1987/88 | 21/11/87 | Luton 2 (Allinson 2) Tottenham 0 Att: 10,091 |
| 1986/87 | 28/3/87 | Luton 3 (Harford, Newell, McDonough) Tottenham 1 Att: 13,447 |
| 1985/86 | 12/4/86 | Luton 1 (Newell) Tottenham 1 Att: 13,141 |
| 1984/85 | 2/2/85 | Luton 2 (Stein, Nwajobi) Tottenham 2 Att: 17,511 |

* Roger Wash is our official club statistician.

Anyone with inquiries or comments please write to him
c/o The Editor, Luton Town F.C., Kenilworth Road Stadium,
1, Maple Road, Luton LU4 8AW.

IT HAPPENED 20 YEARS AGO THIS WEEK ...

6th December 1969

In the upset of the second round of the F.A. Cup, promotion - chasing Luton, including such players as Malcolm Macdonald and Chris Nicholl, were knocked out 2-1 at non-league Hillingdon. Matt Tees scored the Town's goal before a crowd of 9,330.

IT HAPPENED 10 YEARS AGO THIS WEEK ...

1st December 1979

The Town won 2-1 at Shrewsbury to push up to third place in the second division table. Brian Stein and Bob Hatton scored the goals for the fifth away win of the season.

This was lost 1-0 before a then-record crowd of 6,898.

The Town's supporters could not believe it when the teams were matched yet again in 1897-98 to make it four seasons running.

This time the Town won narrowly 4-3 away and such was the manner of the victory 'Tottonian', writing to the Luton News, commented "I feel sure you will agree that Luton won solely by foul play. It was not a very gentlemanly action of Davies to strike Hartley in the face; neither was it sportsmanlike to double Cullen up and leave the home team with only 10 men for about 20 minutes of the first half.

"Three of Luton's goals were lucky - No 1, from a penalty-kick for a purely technical infringement of the rules, No 2, from a corner, which people in a position to see declared that the ball was fisted through, and No 3, that miserable winning goal, from a silly foul against the home team. This after three of the visitors had been cautioned for foul play - such is the equality of things."

People began to think it was a fix when in the fifth qualifying round of 1898-99 the teams met again for their annual cup match.

Enough was enough everyone said when the tie went to a second replay after a 1-1 draw at both Luton and Tottenham.

For the last cup match between the teams for 34 years, Tottenham won through, finally, 2-0 at neutral Tufnell Park and, freed of the spectre of Luton, went on to become the first winners of the competition from the Southern League two years later.



• Emeka Nwajobi was a Town scorer against Spurs here in a 2-2 draw in February 1985. Peter Nicholas made his Luton debut that day in the team which escaped from relegation that season.

Luton News

TOWN & COUNTRY • Mid and South Beds

DUNSTABLE GAZETTE

Best AND BEST!

All the LUTON TOWN NEWS from **BRIAN SWAIN**

The 'Man in the know'



WEDNESDAYS 14p



**TOP
HATTERS
COVERAGE!**

SATURDAY SPORTSOUND 2-6PM

◆ DAILY SPORTS DESKS ◆

103.8 FM & 630 kHz

STEREO

HARROW FINANCE
GROUP PLC
THE UNDERSTANDING MONEY PEOPLE

- EXPRESS LOANS
- MORTGAGES AND RE-MORTGAGES
- COMMERCIAL FINANCE

NO PROBLEM TOO GREAT - WE CAN HELP

CALL 7 DAYS A WEEK 9am-9pm ON **01-861 3077**

BROKER FACILITIES AVAILABLE OR WRITE TO HARROW FINANCE FREEPOST HARROW HA1 2ER FOR WRITTEN DETAILS AND QUOTATIONS

LOANS SECURED ON PROPERTY LICENSED CREDIT BROKERS

T.J. ALDRIDGE
Builders
302 Selbourne Rd. Luton
Tel: (0582) 505412-3

Roofing Specialists - General Building Repairs - Brickwork -
Plumbing - Painting & Decorating - Carpentry - Electrical

WELCOME TO...

TOTTENHAM HOTSPUR

- This afternoon we welcome Tottenham Hotspur to Kenilworth Road. Formed in 1882, Spurs are one of the oldest, biggest and most glamorous clubs in the country and also one of the most commercially adventurous.
- They were the first club to "go public" in a blaze of publicity and shares in their public company can now be bought and sold on the stock exchange, but their foundation was much less publicised.
- The original Hotspur Football Club was formed from an older cricket club in 1882. Most of the founders were old boys of the St John's Presbyterian School and Tottenham Grammar School.
- The Casey brothers were well to the fore as the family provided the club's first goalposts - painted blue and white - and their first ball. They adopted the local YMCA as their meeting place, but later settled at the Red House which is still their headquarters, but now known simply as 748 High Road.
- Spurs have won the league championship twice (1951 and 1961) and the F.A. Cup a joint record seven times (1901, 1921, 1961, 1962, 1967, 1981 and 1982). Their 1987 F.A. Cup final defeat was their first in eight appearances in the final.
- Their other chief honours include winning the Football League Cup twice (1971 and 1973), the

- European Cup Winners Cup (1963, the first English team to lift a European trophy), and the UEFA Cup twice (1972 and 1984).
- Last season, they finished sixth in the First Division after languishing 20th at the start of November and since then manager Terry Venables has added England striker Gary Lineker (from Barcelona), Wales defender Pat Van den Hauwe (from Everton) and midfielder Steve Sedgley (from Coventry) to his team. The chief departure was that of England forward Chris Waddle who joined Marseille for £4.5 million.
- Venables is Spurs' ninth post-war manager following in the footsteps of Joe Hulme, Arthur Rowe, Jimmy Adamson, Bill Nicholson, Terry Neill, Keith Burkinshaw, Peter Shreeves and David Pleat.
- There have been many connections between the clubs over the years and the current Tottenham team includes two former Hatters who we welcome today: Mitchell Thomas and Paul Walsh.
- Last weekend, Spurs were beaten 2-1 at home by Derby County. It was their sixth defeat in 15 league outings this season. The team was Thorstvedt, Thomas, Van den Hauwe Sedgley, Howells (Walsh 75), Mabbutt Samways (Poulsten 80), Gascoigne, Stewart, Lineker and Allen. Paul Stewart scored.

Millions of people wouldn't consider using any other airport

It's hardly surprising, Luton International is now the region's No 1 holiday and business airport. After a multi-million pound modernisation programme, LIA has every conceivable facility to ensure that leisure and business travel takes off just inside the terminal building. We are now at the forefront of choice to an astonishing number of frequent air travellers. What's more, getting to Luton couldn't be easier. A rapid rail link means CENTRAL LONDON TO THE TERMINAL BUILDING IN AS LITTLE AS 45 MINUTES. There are superb coach links serving many parts of the country, and the M1 and M25 leave us only minutes from most of North and Central London and the northern Home Counties.



It's your choice

LUTON INTERNATIONAL AIRPORT, LUTON LU2 9LY.
TELEPHONE: (0582) 405100. TELEX 826409. PRESTEL 34470.
FOR LATE AVAILABILITY: ORACLE P.594



Back Row (left to right): **Andy Polston, Paul Stewart, Erik Thorstvedt, Guy Butters, Bobby Mimms, Gary Stevens, Steve Sedgley.** Middle Row: **Gudni Bergsson, Philip Gray, Brian Statham, Paul Gascoigne, Vinny Samways, David Howells, Nayim, Chris Hughton.** Front Row: **Paul Walsh, Mark Robson, Terry Fenwick, Gary Mabbutt, Gary Linekar, John Polston, Paul Moran.**

FIRST TEAM UPDATE 1989-90 SEASON

Luton Town F-A Att Pos 1

| | | | | | |
|---------|-----------------------------|-----|--------|----|-------------|
| Aug 19 | Tottenham Hotspur | 1-2 | 17,668 | - | Chamberlain |
| Aug 22 | Sheffield Wednesday | 2-0 | 9,503 | - | Chamberlain |
| Aug 26 | Liverpool | 0-0 | 11,124 | 10 | Chamberlain |
| Aug 30 | Queens Park Rangers | 0-0 | 10,565 | 11 | Chamberlain |
| Sept 9 | Charlton Athletic | 1-0 | 8,859 | 7 | Chamberlain |
| Sept 16 | Coventry City | 0-1 | 11,152 | 8 | Chamberlain |
| Sept 19 | Mansfield Town (LC2-1) | 4-3 | 5,361 | 8 | Chamberlain |
| Sept 23 | Wimbledon | 1-1 | 8,449 | 10 | Chamberlain |
| Sept 30 | Manchester City | 1-3 | 23,863 | 14 | Chamberlain |
| Oct 3 | Mansfield Town (LC2-2) | 7-2 | 6,519 | 14 | Chamberlain |
| Oct 14 | Aston Villa | 0-1 | 9,433 | 16 | Chamberlain |
| Oct 21 | Norwich City | 4-1 | 9,038 | 12 | Chamberlain |
| Oct 24 | Everton (LC3) | 0-3 | 18,428 | 12 | Chamberlain |
| Oct 28 | Millwall | 1-1 | 10,433 | 14 | Chamberlain |
| Nov 4 | Derby County | 1-0 | 8,919 | 11 | Chamberlain |
| Nov 8 | Oxford United (ZDC) | 3-2 | 1,754 | 11 | Chamberlain |
| Nov 11 | Crystal Palace | 1-1 | 8,000 | 10 | Chamberlain |
| Nov 18 | Manchester United | 1-3 | 11,141 | 13 | Chamberlain |
| Nov 25 | Southampton | 3-6 | 14,014 | 13 | Chamberlain |
| Nov 27 | Crystal Palace (ZDC2) | 1-4 | 3,747 | 13 | Chamberlain |
| Dec 2 | Tottenham Hotspur | | | | |
| Dec 9 | Sheffield Wednesday | | | | |
| Dec 16 | Arsenal | | | | |
| Dec 26 | Nottingham Forest (11.30am) | | | | |
| Dec 30 | Chelsea | | | | |
| Jan 1 | Everton | | | | |
| Jan 6 | FA Cup 3rd Round | | | | |
| Jan 13 | Liverpool | | | | |
| Jan 20 | Queens Park Rangers | | | | |
| Jan 27 | FA Cup 4th Round | | | | |
| Feb 3 | Wimbledon | | | | |
| Feb 10 | Coventry City | | | | |
| Feb 17 | Charlton Athletic | | | | |
| Feb 14 | Southampton | | | | |
| Mar 3 | Manchester Utd | | | | |
| Mar 10 | Aston Villa | | | | |
| Mar 17 | Manchester City | | | | |
| Mar 24 | Millwall | | | | |
| Mar 31 | Norwich City | | | | |
| Apr 7 | Chelsea | | | | |
| Apr 14 | Everton | | | | |
| Apr 16 | Nottingham Forest | | | | |
| Apr 21 | Arsenal | | | | |
| Apr 28 | Crystal Palace | | | | |
| May 5 | Derby County | | | | |
| May 12 | FA Cup Final | | | | |

2 3 4 5 6 7 8 9 10 11 12 14

| | | | | | | | | | | | |
|----------|---------------------|----------------------|-------------|---------------------|-----------------------|----------------------|----------------------|----------------------|-----------------------|----------------------|-----------|
| breacker | McDonough | Beaumont | Dreyer | Wilson | (Williams) | (Preece) | Black | Wegerle ¹ | Kennedy | [Harvey] | [Dowie] |
| breacker | Dreyer | Williams | McDonough | Beaumont | Kennedy | Wegerle | Wilson ^{1P} | Preece | (Black ¹) | [Farrell] | Harvey |
| breacker | Dreyer | (Williams) | McDonough | Beaumont | (Kennedy) | Wegerle | Wilson | Preece | (Black) | [Elstrup] | [Harvey] |
| breacker | Dreyer | Williams | McDonough | Beaumont | Kennedy | Wegerle | Wilson | Preece | (Black) | [Elstrup] | Harvey |
| breacker | Dreyer | Wilson ^{1P} | McDonough | Beaumont | Kennedy | Wegerle | Elstrup | Preece | Black | Harvey | Farrell |
| breacker | Dreyer | Wilson | (McDonough) | Beaumont | Kennedy | Wegerle | Elstrup | (Preece) | Black | [Harvey] | [Cooke] |
| breacker | Dreyer | Wilson | McDonough | Beaumont | Kennedy | Wegerle ² | Elstrup ² | Preece | (Williams) | [Black] | Harvey |
| breacker | Dreyer | Wilson | (McDonough) | Beaumont | Kennedy | Wegerle ¹ | (Elstrup) | Preece | Black | [Harvey] | [Cooke] |
| breacker | Dreyer | Wilson | Harvey | Beaumont | (Kennedy) | Wegerle | (Elstrup) | Preece | Black ¹ | [Johnson] | [Cooke] |
| breacker | Dreyer ¹ | Wilson | Rodger | Beaumont | Kennedy | Wegerle ² | Elstrup ³ | Preece ¹ | Black | Harvey | Cooke |
| breacker | Dreyer | Wilson | (Rodger) | Beaumont | Williams | (Wegerle) | Elstrup | Preece | Black | [Cooke] | [Harvey] |
| breacker | Dreyer ¹ | Wilson ¹ | (Rodger) | Beaumont | Williams ¹ | Wegerle | Elstrup | Preece | Black ¹ | [Harvey] | [Dowie] |
| breacker | (Dreyer) | Wilson | McDonough | Beaumont | Harvey | Wegerle | Elstrup | (Preece) | Black | [Johnson] | [Dowie] |
| breacker | Dreyer | Wilson | (McDonough) | Beaumont | Williams | (Wegerle) | Elstrup ¹ | Kennedy | Black | [Dowie] | [Harvey] |
| breacker | Dreyer | Wilson | Johnson | Beaumont | Williams | Dowie ¹ | Elstrup | Kennedy | (Black) | [Preece] | Harvey |
| breacker | Harvey | Wilson | Johnson | Beaumont | (Cooke) | Wegerle | Dowie ² | (Kennedy) | Preece | [Gray ¹] | [Tighe] |
| breacker | Dreyer | Wilson ¹ | Johnson | (Beaumont) | Williams | Dowie | (Elstrup) | Kennedy | Black | [Wegerle] | [Harvey] |
| breacker | Harvey | Wilson ¹ | Johnson | Dreyer | (Williams) | Wegerle | Dowie | Kennedy | Black | [Elstrup] | Preece |
| breacker | Harvey | Wilson | (Johnson) | Dreyer ¹ | (Preece) | Elstrup ¹ | Dowie | Kennedy | Black ¹ | [James] | [Wegerle] |
| breacker | Harvey | Wilson | (Allpress) | Dreyer | Preece | Wegerle | Dowie ¹ | James | (Tighe) | [Cooke] | [Gray] |

APPEARANCES AND GOALSCORERS

| | League | | Littlewoods Cup | | Z.D. Cup | |
|------------------|--------|-----|-----------------|-----|----------|-----|
| | Aps | Gls | Aps | Gls | Aps | Gls |
| Tim Allpress | - | - | - | - | 1 | - |
| David Beaumont | 13 | - | 3 | - | 1 | - |
| Kingsley Black | 15 | 4 | 2(1) | - | - | - |
| Tim Breacker | 15 | - | 3 | - | 2 | - |
| Alec Chamberlain | 15 | - | 3 | - | 2 | - |
| Richard Cooke | -(4) | - | - | - | 1(1) | - |
| Iain Dowie | 4(3) | 1 | -(1) | - | 2 | 3 |
| John Dreyer | 15 | 2 | 3 | 1 | 1 | - |
| Lars Elstrup | 10(3) | 2 | 3 | 5 | - | - |
| Sean Farrell | -(1) | - | - | - | - | - |
| Paul Gray | - | - | - | - | (2) | 1 |
| Richard Harvey | 3(8) | - | 1 | - | 2 | - |
| Julian James | -(1) | - | - | - | 1 | - |
| Marvin Johnson | 4 | - | -(1) | - | 1 | - |
| Mick Kennedy | 13 | - | 2 | - | 1 | - |
| Darron McDonough | 8 | - | 2 | - | - | - |
| David Preece | 11(1) | - | 3 | 1 | 2 | - |
| Graham Rodger | 2 | - | 1 | - | - | - |
| Les Sealey | - | - | - | - | - | - |
| Aaron Tighe | - | - | - | - | 1(1) | - |
| Roy Wegerle | 12(2) | 2 | 3 | 4 | 2 | - |
| Steve Williams | 10 | 1 | 1 | - | - | - |
| Danny Wilson | 15 | 5 | 3 | - | 2 | - |

LEADING LEAGUE GOALSCORERS: Barnes (Liverpool) 10, Platt (Aston Villa) 10, Hughes (Manchester United) 8, Le Tissier (Southampton) 8.

BARCLAYS FOOTBALL LEAGUE DIVISION ONE

| P | W | D | L | F | A | W | D | L | F | APts | | |
|----|---|---|---|----|----|---------------------|---|---|---|------|----|----|
| 15 | 4 | 1 | 1 | 15 | 3 | Liverpool | 4 | 2 | 3 | 14 | 13 | 27 |
| 15 | 6 | 2 | 0 | 20 | 4 | Arsenal | 2 | 1 | 4 | 7 | 13 | 27 |
| 15 | 5 | 2 | 1 | 18 | 9 | Aston Villa | 3 | 1 | 3 | 7 | 6 | 27 |
| 15 | 3 | 5 | 0 | 15 | 6 | Chelsea | 4 | 1 | 2 | 7 | 6 | 27 |
| 15 | 3 | 3 | 1 | 17 | 11 | Soton | 3 | 2 | 3 | 14 | 14 | 23 |
| 15 | 5 | 0 | 2 | 8 | 7 | Coventry | 2 | 2 | 4 | 5 | 12 | 23 |
| 15 | 3 | 2 | 2 | 9 | 7 | Nottingham Forest | 3 | 2 | 3 | 11 | 7 | 22 |
| 15 | 2 | 6 | 0 | 12 | 8 | Norwich City | 3 | 1 | 3 | 9 | 9 | 22 |
| 15 | 4 | 1 | 3 | 14 | 7 | Derby | 2 | 2 | 3 | 5 | 6 | 21 |
| 14 | 4 | 2 | 1 | 12 | 5 | Manchester United | 2 | 1 | 4 | 11 | 15 | 21 |
| 15 | 4 | 0 | 3 | 12 | 11 | Tottenham Hotspur | 2 | 3 | 3 | 11 | 12 | 21 |
| 15 | 5 | 1 | 2 | 15 | 9 | Everton | 1 | 2 | 4 | 6 | 13 | 21 |
| 15 | 4 | 2 | 2 | 10 | 6 | LUTON TOWN | 0 | 3 | 4 | 7 | 14 | 17 |
| 15 | 1 | 2 | 4 | 5 | 10 | Wimbledon | 2 | 5 | 1 | 7 | 7 | 16 |
| 15 | 3 | 2 | 3 | 12 | 9 | Millwall | 1 | 2 | 4 | 9 | 18 | 16 |
| 15 | 4 | 2 | 2 | 13 | 10 | Crystal Palace | 0 | 2 | 5 | 5 | 22 | 16 |
| 16 | 3 | 3 | 2 | 9 | 6 | Sheffield Wednesday | 1 | 1 | 6 | 1 | 18 | 16 |
| 15 | 2 | 3 | 2 | 8 | 6 | Charlton Athletic | 1 | 3 | 4 | 4 | 10 | 15 |
| 15 | 2 | 2 | 3 | 6 | 8 | Queens Park Rangers | 1 | 4 | 3 | 8 | 11 | 15 |
| 15 | 4 | 1 | 3 | 14 | 10 | Manchester City | 0 | 2 | 5 | 4 | 18 | 15 |

© The Football League FAC = F.A. Cup ZDC = Zenith Data Cup () indicates player substituted [] indicates substitute used Home fixtures in Bold Scorer's name in Bold P = Penalty † denotes own goal

MAN IN CHARGE Dennis Hedges (Oxford)

A joinery works manager, Dennis is married and has two grown-up sons. He began refereeing in 1962 in the Oxford Senior League and progressed via the Hellenic and Isthmian Leagues to the Football League list in 1979. He enjoys woodcraft and cricket.



SPURS FORM CHECK - THEIR LAST TEN OUTINGS

- Oct 18 Arsenal (H) 2-1 (Walsh, Samways)
 - Oct 21 Shef Wed (H) 3-0 (Lineker 2, Moran)
 - Oct 25 Man Utd (A) LC3 3-0 (Nayim, Samways, Lineker)
 - Oct 29 Liverpool (A) 0-1
 - Nov 4 Southampton (A) 1-1 (Gascoigne)
 - Nov 11 Wimbledon (H) 0-1
 - Nov 18 Crystal Palace (A) 3-2 (Howells, Samways, Lineker)
 - Nov 22 Tranmere Rovers (A) LC4 2-2 (Gascoigne, og)
 - Nov 25 Derby (H) 1-2 (Stewart)
 - Nov 29 Tranmere Rvrs (H) LC4R 4-0 (Howells, Stewart, Mabbutt, Allen)
- Leading league scorers (up to Nov 27) : Lineker 9, Gascoigne 6.

THE LAST TIME WE MET...

Aug 19, 1989. Spurs 2 (Stewart, Allen) Luton 1 (Wegerle). 17,668...an unconvincing opening day win for Spurs this season.

TEAM SPIRIT-REPLI-KIT.

UMBRO REPLI-KIT
TOP TEAM REPLICA FOOTBALL KIT

umbro
THE CHOICE OF CHAMPIONS

Voucher No. 10

CAVALIER GSi 2000. A WHOLE NEW BALL GAME



VAUXHALL. ONCE DRIVEN, FOREVER SMITTEN.



VAUXHALL IS BACKED BY THE WORLDWIDE RESOURCES OF GENERAL MOTORS.

VAUXHALL TEAM CHECK.

LUTON TOWN

*Team Manager: Ray Harford
White Shirts, Navy Shorts*

- 1 Alec Chamberlain
- 2 Tim Breacker
- 3 Richard Harvey
- 4 Danny Wilson
- 5 Marvin Johnson
- 6 John Dreyer
- 7 David Preece
- 8 Lars Elstrup
- 9 Iain Dowie
- 10 Mick Kennedy
- 11 Kingsley Black

Subs



**Official Ball
Sponsors**



umbro

Official Kit Sponsors

TOTTENHAM HOTSPUR

*Team Manager: Terry Venables
Yellow Shirts, Yellow Shorts*

- 1 Erik Thorstvedt
- 2 Mitchell Thomas
- 3 Pat Van den Hauwe
- 4 Steve Sedgley
- 5 David Howells
- 6 Gary Mabbutt
- 7 Vinny Samways
- 8 Paul Gascoigne
- 9 Paul Stewart
- 10 Gary Lineker
- 11 Paul Allen

Subs

Referee: D. HEDGES (Oxford) Linesmen: M.H. BROWN (Yellow Trim) P. COX (Red Trim)

Designed and printed by Abacus Press, Berkhamsted, Herts.