

CRYSTAL
PALACE

V
LUTON
TOWN

ZENITH DATA
SYSTEMS CUP
ROUND TWO

27.11.89

Crystal Palace

SAVE
50p ON
PALACE
CHRISTMAS
VIDEO

TONIGHT'S MATCH SPONSOR

ALLDERS OF CROYDON
01-681 2577

PRICE
50p

Fly



atlantic

ZENITH DATA SYSTEMS CUP: 2ND ROUND
Monday 27th November 1989

v LUTON TOWN

Kick-off 7.45pm

**“Choosing the best
personal computer
isn't a matter
of life or death.
It's far
more important
than that.”**

Apologies to Bill Shankly.



World Class. That's Zenith Data Systems.

One of the top five manufacturers of personal computers around. Offering a comprehensive range of desktops and laptops.

So when the time comes to choose a personal computer, it's most important to remember that Zenith Data Systems are in a super league of their own.

ZENITH | data systems

FOR FURTHER INFORMATION CALL FREE ON 0800 525156.



LUTON TOWN

LUTON TOWN - NO STRANGERS TO CUP SUCCESS

Luton Town, back at Selhurst Park as our welcome visitors for Cup tie action this evening, have gained a deserved reputation in recent years as a worthy Cup fighting side because The Hatters have appeared in three Wembley Cup finals in the last twenty months, with their most notable success being the prestigious 3-2 victory over Arsenal in the 1988 Littlewoods Cup Final when two goals from Brian Stein and another from Danny Wilson gave the unfancied Hertfordshire side the trophy and stand-in goalkeeper Andy Dibble made a crucial penalty save to prevent Arsenal extending their lead.

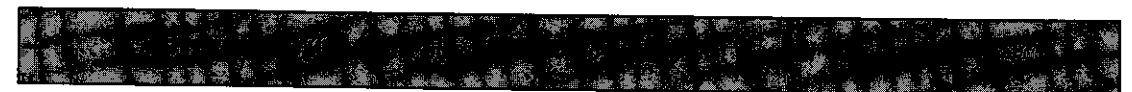
RELINQUISHED

Last April the holders of the Littlewoods Cup finally relinquished their hold on it although at one time they appeared likely to repeat their Wembley success of the previous year. Mick Hartford had put the Hatters in front with a 36th minute header and they looked to be in full control against a lack-lustre Nottingham Forest. However, goal-

keeper Les Sealey conceded a penalty, converted by Nigel Clough, and from then on there was only one clear winner, Forest eventually taking the match 3-1.

FULL MEMBERS FINALISTS

Luton also played at Wembley in the Full Members Cup Final (then the Simod Cup Final) of 1988—indeed their dire performance that day could be said to have contributed to their success against Arsenal a few weeks later as recorded above. They reached the Final by an impressive win at Everton and then disposed of Stoke City and Swindon Town on their own plastic pitch, only to suffer a severely embarrassing 1-4 defeat in the Final at the feet of Reading who were second from bottom in Division Two at that time and were eventually relegated. Luton had taken the lead in that game but their dreadful performance afterwards certainly led to a steeling of minds and wills to good effect when they returned to Wembley.



LUTON TOWN FC 1989-90



Back Row: Richard Cooke, Mick O'Brien, Julian James, Marvin Johnson, Richard Harvey, Raphael Mead, Kingsley Black, Paul Gray.

Middle Row: Terry Mancini (Assistant Manager), Jim Ryan (Coach), Darron McDonough, Ian Dowie, Graham Rodger, Les Sealey, Alec Chamberlain, Mick Harford, David Beaumont, John Dreyer, John Faulkner (Coach), Dave Galley (Physio).

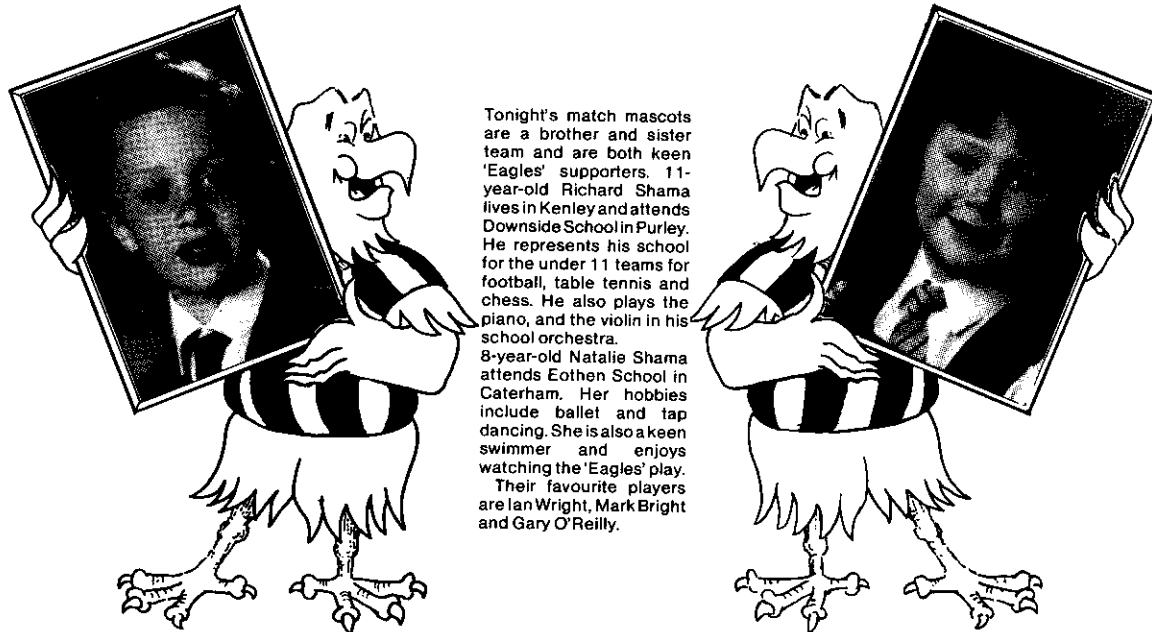
Front Row: David Preece, Rob Johnson, Danny Wilson (Capt), Ray Harford (Manager), Roy Wegerle, Tim Breacker, Steve Williams.

RULES FOR TONIGHT'S MATCH

One of the most attractive features of the Full Membership Cup, now sponsored by **Zenith Data Systems**, is that there MUST be a conclusive result at each match, for there are no replays.

Therefore, if tonight's scores are level at the end of 90 minutes extra time will be played, and if that fails to separate the sides a penalty competition will be held in accordance with the rules of the game.

MASCOTS ON PARADE



Tonight's match mascots are a brother and sister team and are both keen 'Eagles' supporters. 11-year-old Richard Shama lives in Kenley and attends Downside School in Purley. He represents his school for the under 11 teams for football, table tennis and chess. He also plays the piano, and the violin in his school orchestra. 8-year-old Natalie Shama attends Eothen School in Caterham. Her hobbies include ballet and tap dancing. She is also a keen swimmer and enjoys watching the 'Eagles' play. Their favourite players are Ian Wright, Mark Bright and Gary O'Reilly.

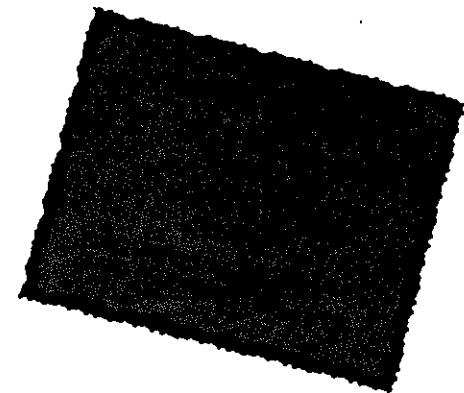
SAVE 50p ON THE CRYSTAL PALACE CHRISTMAS VIDEO

OUR SPECIAL CHRISTMAS VIDEO GOES ON SALE WITHIN THE NEXT FEW DAYS. IT'S A MUST FOR ANY PALACE FAN. ORDER YOUR COPY FROM THE CLUB SHOP NOW.

GOALS-GOALS-GOALS-FROM THE 'PLAY OFFS' TO 'SPURS'
PLAYER INTERVIEWS AND SCENES FROM THE
TRAINING GROUND.
STEVE COPPELL-RON NOADES.
PLUS-OUR LATEST MYSTERY SIGNING.



SAVE A
FURTHER
50p BY USING
THE COUPON
ON THIS PAGE



Leagues
ahead
of the
competition



Eagles
COURIER SERVICE

BIKES
VANS
INTERNATIONAL

Tel: 01-837 9102

Accounts: 01-278 3798

Fax: 01-837 5134

BE A WINNER THIS CHRISTMAS

AT
ALDERS
OF
CROYDON



Step into Alders of Croydon, Britain's third largest Department Store, for all your Christmas shopping. We offer a vast range of quality merchandise at unbeatable prices in over 160 departments.

Plus a special Christmas offer.

FROM
SQUEEKY HOLLOWES
COMES TWEAKS,
SQUEEZE HIS EAR
AND HE'LL SQUEAK
FOR JOY!

TWEAKS™

£7.99

(USUALLY £22.99)
WHEN YOU SPEND
£20 OR MORE.



ALDERS

OF CROYDON ♦ TEL: 01-681 2577
ALL TOGETHER A BETTER CHRISTMAS

You'd be
Mad-as-Hatters
to fly with
anyone else.

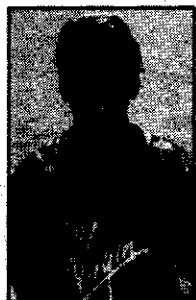
No other airline
is in the same league
as Virgin Atlantic.



LONDON · NEW YORK JFK and NEWARK · MIAMI · MOSCOW · TOKYO

For details and reservations phone 0293 38222 or see your travel agent.

Team Check sponsored by
Walter Lilly
01-689 6011

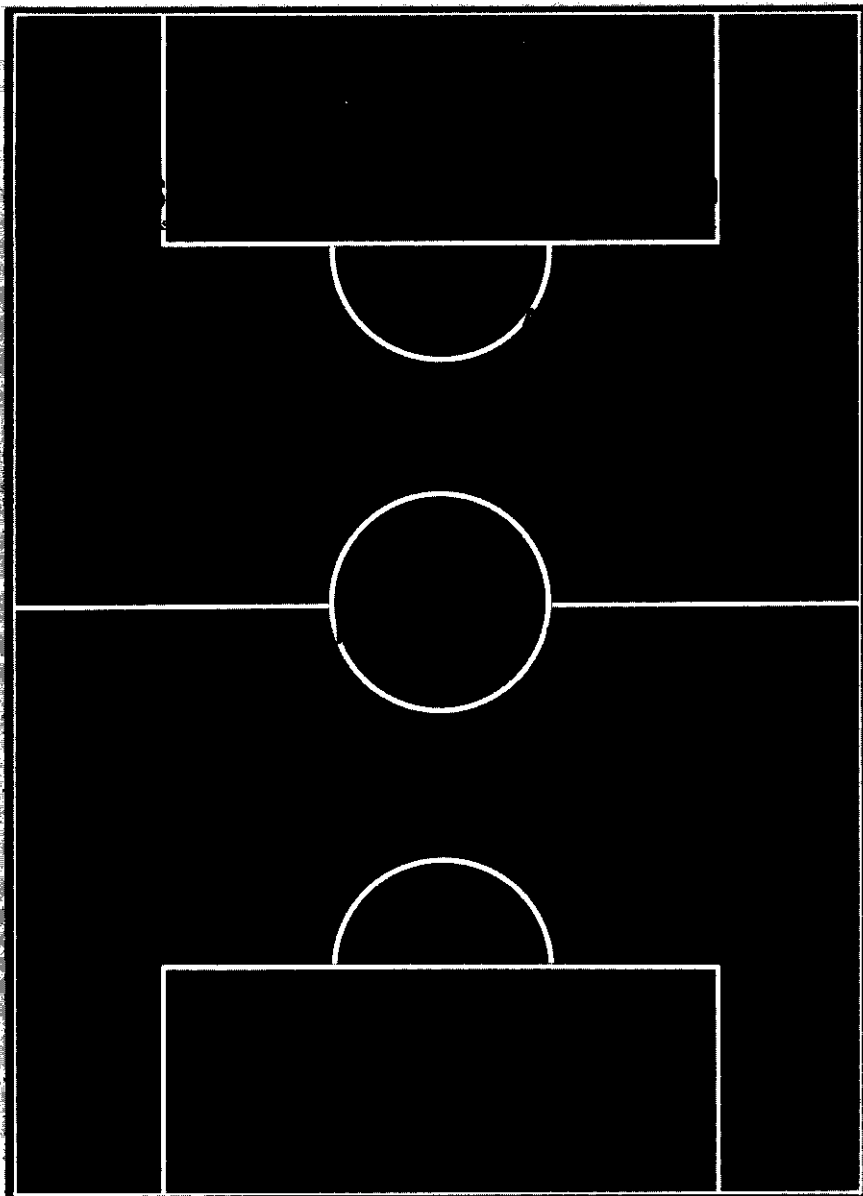


**BUKTA
REPLICA KIT**
Available from
The Club Shop
and local stockists

**PALACE HOME
MATCH VIDEOS**
available at
Club Shop

NEXT MATCH

Saturday
2nd December
1989
Barclays League
Division One
PALACE
v
**QUEENS
PARK
RANGERS**
Kick-off 3.00pm



BENCH SPONSOR

MILLETS LEISURE
0604 643687

FOR NEWS & INTERVIEWS
FROM CRYSTAL PALACE

PALACE 0898 121435
club call



MATCHBALL
Banaman official sign
writers to CPFC
01-773 4644

**0898 121845
TICKET CALL**

Travel and
ticket information