

OFFICIAL PROGRAMME £1.00

MIDDLESBROUGH

BARCLAYS FOOTBALL LEAGUE DIVISION ONE



Saturday, February 18th, 1989 Kick-off 3.00 p.m.

LUTON TOWN

This match is sponsored by: Eaton Ltd, Alliance Estates Ltd, Hertfordshire BTR,
Milcutt Engineering

HAPPY HATTERS GO MARCHING ON



● **Opening the way:** Mick Harford heads the first goal during our 3-0 win over West Ham in the Littlewoods Cup semi-final last Sunday.

LUTON TOWN HOTLINE

Match Tickets, Match Enquiries, Membership, Junior Hatters:

Ring - Cherry Newbery,
Ticket Supervisor - Luton (0582) 411622
24 Hour Service - Luton (0582) 30748

Advertising and Match Sponsorship:

Ring - Wendy Greaves, Marketing Executive
Luton (0582) 411622

Stadium Hire/Special Events: Ring - Mike Beevor,
Special Events Manager Luton (0582) 411622

Souvenirs/Adidas Sportswear: Ring - Bev Tyler,
Sales Supervisor Luton (0582) 411622

Banqueting & Function Facilities:

Ring - Catering Manager Luton (0582) 411626

Promotions Office: Lotteries - Ring John Gornall,
Development Executive Luton (0582) 416976

Soccerline for all the up-to-date information on Luton Town F.C.: Ring - 0898 700273

Club Office hours: 8.30 am - 6 pm. Luton (0582) 411622

Edited by: Robert Alexander Associates

Pictures by: Apex Photography, Milton Keynes

OGDEN & CLEAVER

320-328 Selbourne Road, Luton, Beds. LU4 8NY
Tel: (0582) 597631.

The biggest selection of Wallcoverings in Luton.

Quality Paints by Dulux, Manders, Sandtex & Sadolin.

Glass cut to size

Wide selection of mirrors and other decorative items.

SPECIAL DISCOUNTS FOR LUTON TOWN MEMBERS

Part of the Manders Group



● **Emphatic win:** Roy Wegerle (top) moves in to strike the second goal at Upton Park and Mick Harford (below) heads in another effort on goal.



**CALL
SOCCERLINE
ON**

0898 700 273

For all the latest news and views from Luton Town

Direct Booking!
Direct Saving!
Direct from Luton to
Florida & Mexico

01-727 2680

Access/Visa ATOL 1071

**Tjaereborg
LIMITED**





The Rascal. A real half-tonner.

BEDFORD RASCAL 
BACKED BY THE WORLDWIDE RESOURCES OF GENERAL MOTORS

RAY'S REVIEW



After the excitement of our Littlewoods Cup semi-final first leg at West Ham last Sunday, we return to the most serious business of our season this afternoon. Whatever happens in the cup competitions, the league is always the most important thing of all. It is the standard by which we can all measure our progress each year. Last weekend's win was a great result for Luton Town of course and proved our successes have not all been due to home performances. In fact, that was our fourth win away from home in the competition this season which shows how well the team can play. It does not, however, affect our league position and that is something we hope to work on improving this afternoon. We were all disappointed to be beaten here by Nottingham Forest in our last home game, but they proved themselves to be the superior side on the day and played the game in the right manner. We had no complaints.

This afternoon we welcome Bruce Rioch's Middlesbrough to Kenilworth Road. Bruce started his career here in the 1960's and I am sure he will be warmly welcomed back today. He has done a terrific job at Ayresome Park to revive the club and produce a team for the First Division and we know they will give us a very tough test. We cannot afford any complacency. Our victory at Upton Park was as much due to the determined team efforts as the skills of any individuals and we need to sustain that collective mood. Having said that, we had splendid performances from all our players and a first-class debut in defence by David Beaumont to enjoy on the day.

I was delighted with the team's effort, It was probably our best away performance of the season, but today we must put dreams of a possible Wembley appearances out of our minds – and, remember, it is only half-time in the semi-final – and concentrate on gathering league points. Everyone can help by giving the team their full vocal support. Thankyou. Enjoy the match.

Ray Harford

LUTON TOWN



KENILWORTH ROAD STADIUM, 1 MAPLE ROAD, LUTON, BEDS LU4 8AW

CHAIRMAN

David Evans MP

DEPUTY CHAIRMAN

Brian Cole

DIRECTORS

M. Aleyan, T.W. Bailey,
E.S. Pearson, R.J. Smith
J.R. Smith, D.G. Watson-Challis

MANAGING DIRECTOR

John Smith

PRESIDENT

Cecil Holloway

TEAM MANAGER

Ray Harford

GENERAL SECRETARY

Bill Tomlins

HONORARY LIFE MEMBERS

J. Richardson
T. Hodgson

VICE PRESIDENTS

R.L. Banks
C. Bygrave, C.J. Evans
E. Fountain, I.E. Holmes
R. Larkinson, R. Safranek
E. Waller

HONOURS

LITTLEWOODS CUP WINNERS – 1987-88
FA CUP FINALISTS – 1958-59
SIMOD CUP FINALISTS – 1987-88
CHAMPIONS – DIVISION 3(S) 1936-37
CHAMPIONS – DIVISION 4 1967-68
CHAMPIONS – DIVISION 2 1981-82



Mailbag

Write to: **The Editor, Luton Town F.C.,**
Kenilworth Road Stadium, Maple Road, Luton by Tuesday a.m.

Celebrity Auction

Dear Sir,
May I, on behalf of the Governors, pupils, staff and local community thank you for the signed football shirt you have sent for our Celebrity Auction. I had anticipated waiting until the Auction had been held so that I could inform you of the sum raised. The date has been fixed, however, for March 17th and I fear that the delay would indicate a lack of courtesy.

Our School has 1200 pupils, a number of whom have very little spare money in the home. You have not only helped the British Heart Foundation, but have also enabled our school to purchase items we would not otherwise be able to afford.

Again our sincere thanks for your kindness and support.
Yours sincerely

K. Gilbert
Headteacher

Denbigh High School
Alexandra Avenue
Luton

Best wishes

To Luton Town F.C.
I am sending this letter to wish you all the best in the Littlewoods Cup semi-final and all your other matches.
Best Wishes

Eric Jayarajah

14 Parkleight Court
Morden Road,
London

Unhappy visitor

Dear Sir,

I have just attended my first match at Luton - "The Future Face of Football" - what a disappointment! The home fans only seemed to cheer when exhorted to do so by the scoreboard. Despite the best efforts of the Forest fans who'd sneaked in, there was virtually no atmosphere.

The 'home fans only' idea has clearly not succeeded. There were groups of Forest fans throughout the ground and the home fans near us seemed pleased to see us. So much for the oft-claimed public support for the scheme.

The pitch, which is excellent for hockey, is unsuited to football. It gives Luton a significant advantage, but surely no-one can claim that it makes for better quality football.

Yours sincerely

Robert Marsh

19 Hughenden Avenue
Harrow, Middx.

Happy visitor!

Dear Sir,

As an ardent Forest supporter may I thank you for a Super Football Match amongst a very sporting crowd who I am sure appreciated the super football played by Brian Clough's young team not forgetting Luton's part in the very excellent first half which must have been as good as any seen at Kenilworth Road this season.

Yours faithfully

George B. Ripley

50 High Street
Oakley
Beds

Golden Oldie

Dear Sir,

I wonder if you would be kind enough to help?

I collect old Wolves programmes and am missing the following:

Luton v Wolves 1945/46

I would be most grateful if you could, through the medium of your matchday programme, ask your supporters if they have a copy of this programme which they are willing to sell. I am prepared to pay £10 for this item.

Thank you.

Yours faithfully

David Cleveland

Brook Farmhouse
Maplehurst
Horsham
West Sussex

Back-up Scoreboard operator required

Are you interested in working closely with the club? Do you have computer experience? Are you 18 or over? Are you prepared to give up some of your free time? If so ring Wendy Greaves on 0582 411622 for further information.

J. SAPSWORTH LTD

GLAZING REPAIRS - GLASS SUPPLIES
DECORATING SPECIALISTS

92 MARSH ROAD, LUTON, BEDS.

☎ GLAZING & 24 hr EMERGENCY SERVICE 0582 573025
DECORATING 0582 597505

EXECUTIVE MEMBERS

ABB ROBOTICS LTD
ADRIATIC ENTERPRISES LTD
ANACHEM LIMITED
MR W ASHBURNER
BEDFORD COMMERCIAL VEHICLES
BERKELEY ASSOCIATE PRINTERS
BERVALE MEAD INSURANCE BROKERS LTD
W J BILLINGTON LTD
BLAKEY ENGINEERING CO LTD
BRITISH CAR AUCTIONS
BROAD STREET PRINT
CAMARGUE KITCHENS
CAMBERWELL PLAIN PAPER COPIERS LTD
CHEF FOODS
COUNTY MOTORS LTD
CRANE & STAPLES SOLICITORS
CHAMBERLAIN WINDOW FASHIONS
CAPITAL METALWORK LTD
DUPONT (UK) LTD

EVERGREEN SUPPLIES LTD
FILMERGRAPHIC PRESS LIMITED
FENNEMORES SOLICITORS
FLITWICK OIL
F W PEARCE BUILDERS LTD
V G GREEN & SONS LTD
MR D HALES
HANDSCOMBE Financial and Investment Services
E W HUDSON (HOLDINGS) LTD
IVOR HOLMES LTD
INFORMATION TECHNOLOGY LTD
I S INITIAL CONTRACT SERVICES LTD
MARK JAMES (SALVAGE) LTD
HANS JURGEN (IMPORTERS) LTD
JSB BUSINESS FORMS
JOHN LAING CONSTRUCTION LTD
J M KEENAN LTD
MR P LAYCOCK
LUTON BATHROOM & TILE CENTRE
MILCUTT ENGINEERING LTD
NEAHURST LIMITED

OPELVALE GROUP
MR S PEARSON
PETERS GRAVES & CO
RAVENMERE LTD
A W REMOVALS LTD
R B T ELECTRICS
REYVEN (SPORTSFIELDS) LTD
RICHARDSON & BOTTOMS LTD
ROGERS/COUNTRY PROPERTIES ESTATE AGENTS
SHOREY'S TRAVEL
MR & MRS D SHERIDAN
THE KITCHEN CENTRE
W S TYREMASTERS (Div. of West & Sellick (Tyres) Ltd)
TILDAE INVESTMENTS LTD
VAUXHALL MOTORS LTD
WALLSPAN BEDROOMS
WILTON TRUCK RENTAL
WOODWARD BUILDERS
YARNSFIELD LTD

EXECUTIVE BOX HOLDERS

WILTON TRUCK RENTAL

Trimoco The name that's making a difference

WHITBREAD

Ribocon

SKF SERVICES Interior Contracts Ltd

Unigate DAIRIES Bringing out the best.

Key Consultants HUNTER & HUNTER LTD

CONNOLLY HOMES HOMES TO BE HAPPY IN

Hunting Gate 4444

Herald just a friend dropping in

BRITISH CAR AUCTIONS

SYNAPSE

TNT

LUDLOW OF LUTON

D. KEECH

T. J. ALDRIDGE Builders

National Westminster Bank PLC

DBF Crosswinds Ltd COMPUTER AND BUSINESS STATIONERY

PRUDENTIAL Property Services

sdh builders

IS INITIAL CONTRACT SERVICES

EDS Electronic Data Systems

DRG PAPER & BOARD

McCANN HOMES

S & S HOMES

RYDER INSURANCE CONSULTANTS LTD

EXPOTECHNIK

Hillson Twicken

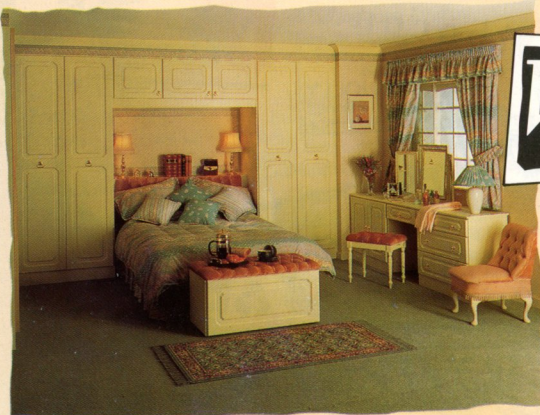
WE'VE ALSO MADE SOME CHANGES TO OUR LINE UP THIS SEASON

Kenilworth Road isn't the only place you can see a new line up this afternoon.

Just down the road in the Arndale Centre, and in our showrooms throughout the U.K., you can see the new additions to our own squad.

The Cameo Collection is making its home debut in what is undoubtedly the most attractive and unbeatable line-up in fitted bedroom furniture in the U.K.

And if that weren't enough you'll find that like Luton Town, we too have proved that you don't need to break the bank to put together a winning combination.



Wallspan

Wallspan Bedrooms Limited,
Head Office: Maulden Road,
Flitwick, Beds MK45 5BW.
Telephone: 0525 716161

SHOWROOMS THROUGHOUT THE U.K.

DRESSING ROOM

with David Beaumont

Scottish defender David Beaumont, our recent signing from Dundee United, enjoyed a dream debut for the Town last Sunday when he played alongside Steve Foster in the 3-0 Littlewoods Cup win at West Ham. The semi-final first leg triumph has set up the prospects of a possible return to Wembley for this year's final, but David, as he admits in this week's Dressing Room Talk, had never even thought about Wembley before let alone been there:



• Great debut: David Beaumont

Wembley Way

"I did not realise how good a chance we had of reaching the final until after the quarter-final win over Southampton. When I signed, I was more concerned with making a good move to an English First Division club and did not give Wembley a thought. And even when we went down to West Ham I was not really thinking about it either... I have never been brought up to think of Wembley except as the place where the Scots go hunting a victory every other year! But now we are in the position we are in this semi-final, I have to admit I am thinking about it more and more.

"I never thought we would be able to pull off such a good win as we did at West Ham and I was surprised they did not come at us much more. We were thinking of getting away with a one-goal victory or a draw. To make my debut in a 3-0 win in a semi-final is a bit of a dream! Now we have to make certain we can finish the job off and secure a Wembley place. If that happens and I am selected I am sure all my family will be coming down to Wembley from Scotland.

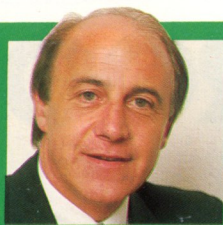
"By then, I hope I have settled down properly here and moved into a new home. I am hoping to be able to buy a house in the area very soon and get my wife Kay and young daughter Dawn down here with me. Then I can really aim to establish myself properly here.

"I enjoyed Sunday's match a lot. Playing alongside Steve Foster was good

because he talks so much and is very good in the air. I was not really too surprised by anything. There was one moment in the first half when I had a few words with Les Sealey about a free-kick near the half-way line, but that was all it was. He shouts a bit and I shouted back and that was that! It is all part of the game and I felt the kick was a bit dangerous for him to take as it was so near the half-way line and they had a player very close by.

"I like to play in the centre of the defence as a twin centre-half. I have played there in Scotland and it is much the same. At Tannadice I had to play right-back or midfield to get into the side often because Dundee United had David Narey and Paul Hegarty in the centre and both are established internationals. So, I became a bit of a utility defender.

"Here I am enjoying my football a lot and like the way the team play. The plastic pitch is no problem because we have a lot of them in Scotland and I am used to them. I like them because you can pass the ball well on them and they are good for that. If you are a good player they are no problem. If you're not, you can struggle."



by BILL TOMLINS

THE TOWN

TICKET SALES PLANNED FOR EVERYONE'S SAFETY

A warm welcome to the chairman, directors and staff of Middlesbrough, making their first appearance at Kenilworth Road for nearly 15 years, and particularly to manager Bruce Rioch, whose return today is sure being happy memories of his playing days here for many of our own fans.

We hope our visitors, back in the First Division after promotion, enjoy their day but do not repeat the result they achieved on their last First Division visit back in 1974.

Guesting

Last Sunday was a memorable day for us all and has set up the prospect of an exciting tussle with West Ham here in the second leg (details of the confirmed date and ticket arrangements are on page 15).

I know most of our season-ticket holders and members fully understand our ticket arrangements for such big matches.

Unfortunately, West Ham posed a problem because of the reputation a minority of their fans - with our limited capacity for visitors - to control our ticket sales carefully and well in advance for maximum safety for a certain sell-out match.

We usually accommodate about 200 guests at each match but on this occasion felt it was necessary to

ensure our members were not at the risk of any unscrupulous misuse of our membership scheme.

Some season-ticket holders, who rely only on our match-day programme for information, felt there was not much time to claim. But, after our result at Southampton, ticket information has broadcast on Soccerline, on two local radio stations, in the local newspapers, over the public address system at both the Brian Stein Testimonial match and our home game with Everton and available by telephoning the club.

Understanding

Only a small minority of our fans found this a problem, of course, but I feel I should point out that West Ham's season ticket holders were given only two days to claim and not four, as ours were. I hope everyone understands why the club takes these steps.

All clubs hope those fans who do not have access to club information make an effort to contact the club for big match ticket information.

Finally, may I thank all those supporters who assisted our ticket office in their busy period by their understanding manner. Success always brings additional pressures and your cooperation is always appreciated.

HAPPY TEAM



• On the ball: Mascot Paul Simmonds and his escorts lined up for the camera before our last home match against Forest.

SUPPORT FOR WISHING WELL APPEAL

•Help for Ormond Street:

David Beaumont and Richard Harvey are pictured with just some of the 1,000 children who came to our Forest match as part of the Great Ormond Street hospital's Wishing Well appeal.



•Sporting visitors: Ricky Hill, Roy Wegerle, Danny Wilson and coach Richie Barker were popular callers when they visited General Motors Service Parts in Boscombe Road, Luton.



•Happy winners: Prize winners from a competition run by the Welwyn and Hatfield Times, Mr. Crocombe and his sons, are pictured with our chairman David Evans MP and the Littlewoods Cup.



•Action-package: Roy Wegerle, his cut right eyebrow covered in cream, is challenged by Julian Dicks last Sunday. Roy needed four stitches in his cut.

CAPTAIN'S DIARY



STEVE FOSTER

MICK'S BIRTHDAY PARTY

Mick Harford celebrated his birthday with a bit of style last weekend with that performance at Upton Park. I thought Mick had a tremendous match for us and that everyone pulled together superbly in a great team performance. His goal obviously set us off on our way and I am sure everyone will be wishing him the same - many happy returns, Mick.

Obviously, we are now odds-on favourites in the tie as it is balanced heavily in our favour for the second leg, but funny things can happen in football so we shall not be taking anything for granted. In fact, the biggest danger to our success is that we may not get our attitude right, but we shall all be working hard to make certain our mental approach is just right.

Assured

As you know, Dave Beaumont made his debut in the tie at West Ham and gave a very assured performance. We were all delighted for him and he is sure to make competition for places even tougher now. He is a strong character and does not stand for any nonsense.

This afternoon, we entertain Middlesbrough who are like us a bit too close to the bottom of the table for comfort. They are a good side and will give us another tough test. League points are vital and we must make certain we keep collecting the maximum. Give the lads your full support. Enjoy the match.

FOREST BLAZE ON

Luton Town 2 Nottingham Forest 3

First half equalisers from Mick Harford and Kingsley Black kept the Town on level terms for much of this highly-entertaining clash, but eventually proved insufficient to stop Nottingham Forest from recording their 10th successive win here on February 4. Forest's victory ended the Town's 11-match unbeaten home run dating back to last September.

Former Town midfielder Gary Parker put Forest ahead with a close-range effort after 18 minutes, Harford levelling with a deflected header after a surging run and cross by Tim Breacker one minute later, Forest regained their lead in the 28th minute, Nigel Clough scoring from the spot after Les Sealey had pulled down Steve Hodge.

Black's second equaliser for the Town came with a glorious half-volley on the stroke of halftime and the Town raised their game in the second period without luck before Forest found an unlikely winner. Breacker fouled Carr and from a 25-yard free-kick Clough curled a shot over the wall and beyond Sealey's reach.

Teams: Luton Town – Sealey, Breacker, Grimes, (Oldfield 85), Preece, Foster, Dreyer, D. Wilson, Wegerle, Harford, Hill, Black. Nottingham Forest – Sutton, Laws, Pearce, Chettle, T. Wilson, Hodge, Carr, Webb, Clough, Chapman, Parker.

Referee: J. Ashworth (Luffenham, Leics).

Attendance: 10,465.

1st Team ACTION



• Honourable defeat: Mick Harford and Kingsley Black were unable to prevent defeat with their goals against Forest. Our action pictures today show Steve Foster, Mick Harford and Tim Breacker in action and Kingsley being congratulated. Pictures by Josh Levy of Apex Photography.

HOT NEWS - HOT MUSIC

on **The Hot FM**

24 HOUR RADIO
THROUGHOUT THE AREA

**Chiltern
Network**

Chiltern South
97.6 FM Stereo 828 AM

Northants 96
96.6 FM Stereo 1557 AM

Chiltern North
96.9 FM Stereo 792 AM

Switch on to Anglia . . .
Top of the League for News and
Sports Coverage



ANGLIA
Television Limited

Bedfordshire News Centre
16 Park Street, Luton. Telephone: (0582) 29666
Resident Reporter: Peter Lugg

BOX OFFICE INFORMATION

LITTLEWOODS CHALLENGE CUP

SEMI-FINAL 2ND LEG

LUTON TOWN v WEST HAM UNITED

This fixture has now been confirmed for Wednesday, March 1, 1989 - kick-off 7.45pm

This is an all-ticket match. No guests tickets.

All seats for this match have been sold. The only tickets still available to members are for the Kenilworth Stand.

Normal league match prices apply. Tickets are available from the Ticket Office in Kenilworth Road.

Normal ticket office hours 9am-5pm. Tickets will be on sale after today's match until 7pm.

LUTON TOWN v MILLWALL

Barclays League Division One

Saturday March 11

NO GUEST TICKETS will be available for this match.

Due to the profile of the fixture and in conjunction with police recommendations, there will be no guest tickets for sale. Millwall will be relaying the match to the Den on closed-circuit television.

QPR v LUTON TOWN

Our Barclays League Division One match at Queen's Park Rangers on March 4 has been postponed because of England's preparations for the World Cup qualifying tie in Albania on March 8.

FORTHCOMING MATCHES AT KENILWORTH ROAD

Barclays League Division One

Saturday, March 11, 1989

Luton Town v Millwall

Kick-off 3.00p.m.

Ovenden Papers Football Combination

Saturday, February 25, 1989

Luton Town v West Ham United

Kick-off 3.00p.m.

MAN IN CHARGE Brian Hill (Kettering)

An accountant in the building trade, Brian is married with two children. He began refereeing in 1965 and progressed via the United Counties and Southern Leagues to the Football League list. He enjoys all sport and listening to music. He is a member of the FIFA panel of referees.

CHRISTMAS DRAW RESULTS

With apologies for the delay, we reproduce below the winners of our very successful Christmas raffle, the draw for which was made in the players dressing room, following a training session on Wednesday, December 28th.

We are grateful to our many supporters who bought or sold tickets and would also like to take the opportunity to thank everyone for their continued support in all our other fund raising activities.

CHRISTMAS DRAW 1988

£500 Sarah Kaughnan, 38 Salisbury Road, Luton
£250 Mrs. L.A. Sale, 80 Mattocke Road, Hitchin, Herts
£100 D. Smith, 1 Amberley Close, Stopsley, Luton
£100 Paul Burns, The Lodge, Redbourn Road, Hemel Hempstead
£ 50 P. Cooper, 2a Manor Road, Henlow, Beds
£ 50 Eric Waller, 6 Grove Court, Turvey, Beds
£ 25 Ann Eaton, Glebe Road, Sandy, Beds
£ 25 Andrew Hazel, 4 Braishfield Gardens, Bournemouth.
£ 25 Caroline Hinge, 11 Lancot Drive, Dunstable
£ 25 W. Rayner, 41 Seymour Road, Luton
£ 25 Sheila M. Clarke, 33 Oakway, Studham, Beds
£ 25 Mr. G. Clark, 20 Rotherham Avenue, Luton.

PLAYER PROFILE

TIM BREACKER

Born in Bicester in July 1965, Tim Breacker has been a regular member of the first team at Kenilworth Road since breaking through to make his debut at Portman Road, Ipswich, in 1984. A strong overlapping right-back with boundless energy, he has added a dimension to the Town's attacking play with his ability to reach the goal line and cross.

Last season, Tim was an ever-present in the Town team which reached Wembley twice and the F.A. Cup semi-finals and in all he made 58 competitive appearances. Unluckily for Tim, injury prevented him repeating such a record this term with a hernia operation last autumn interrupting his progress.

A former England under-21 international, Tim is another success of the Town's youth policy having progressed through the ranks to establish himself as a First Division footballer. In a total of 175 league and cup appearances to the end of last season, Tim had scored two goals.



•Overlapping favourite: Tim Breacker.



TIM BREACKER

PROPOSED PRICE STRUCTURE 1989-1990

No Increase Proposed for Juniors or Senior Citizens

In the past month, the Management of the club has been giving long consideration to our price structure for next season. It is suggested for discussion that there will be no increases in prices for Juniors or Senior Citizens and an average rise of only 5.5 per cent for adults.

Before finalising the suggested price structure next month, we are undertaking a public consultation exercise which was so popular last year and asking members views on the proposals. We therefore invite you to let us have in writing your considered views on the revised price structure to reach us no later than Friday, March 3, for final recommendation to the board.

The proposals are: (figures in brackets are current prices)

Season Tickets	Renewals Prior to 30/6/89	Renewals From 1/7/89
Main Stand (A-E)	£	£
Adult	142 (135)	160 (153)
Junior/OAP	65 (65)	80 (80)
Main Stand (F)		
Adult	110 (105)	125 (119)
Junior/OAP	45 (45)	51 (51)
Main Stand Enclosure		
Adult	110 (105)	125 (119)
Junior/OAP	45 (45)	51 (51)
Blocks B & J	75 (75)	85 (85)
Oak Stand		
Adult	110 (105)	125 (119)
Junior/OAP	45 (45)	51 (51)

In the Oak Stand, the special family discount of 20 per cent off season tickets purchased will continue. To qualify, the minimum requirement will be at least two adults, plus at least one juvenile under 16, all of whom must be of the same family.

Kenilworth Stand		
Adult	71 (67.50)	80 (76.50)
Junior/OAP	38.50 (38.50)	43.50 (43.50)

League Match Day Prices	Adults	Juniors/ OAPS
Main Stand (A-E)	11 (9)	5 (5)
Main Stand (F)	8 (7)	3 (3)
Main Stand (G)	5 (5)	3 (3)
Main Stand Enclosure	8 (7)	3 (3)
Main Stand		
Enclosure B, H & J	5 (5)	3 (3)
Oak Stand	8 (7)	3 (3)
Oak Stand		
Restricted View	5 (5)	3 (3)
Kenilworth Stand	4.80 (4.50)	2.50 (2.50)
Kenilworth Stand		
Members under eight (with an adult)	-	0.50 (0.50)

Families - Oak Stand

The special family discount of 20 per cent applies to the match day prices with the same qualifications as for season tickets.

Membership

All £1 (£1) Club 100 £25 (£25)
Price - 2

Students

Members who are students in full-time education may qualify for the Junior price structure. Students will need to prove they are in full-time education. All tickets to be bought in advance.

Guests

Guests will be charged the prices detailed except for the special 50 pence in the Kenilworth Stand which is only available to members.

Comments

Please send to:
Price Structure Comments, c/o Luton Town Football Club,
Kenilworth Stadium, 1 Maple Road, Luton, Beds LU4 8AW.
Closing Date: March 3.

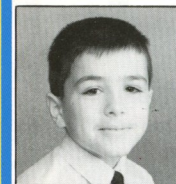
Comparison

To give some food for thought, we include a recent tabulated guide to the average admission receipts per spectator (including season tickets) taken from Football League Division One matches in 1987.

Club	£
Chelsea	5.38
Tottenham Hotspur	5.10
West Ham United	4.84
Queens Park Rangers	4.49
Wimbledon	4.30
Oxford United	4.28
Charlton Athletic	3.90
Nottingham Forest	3.79
Arsenal	3.78
Southampton	3.70
Leicester City	3.68
Liverpool	3.53

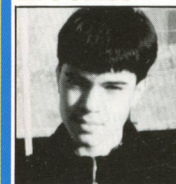
Club	£
Newcastle United	3.48
Everton	3.34
Norwich City	3.31
Coventry City	3.30
Manchester United	3.26
Watford	3.23
Aston Villa	3.14
Sheffield Wednesday	3.12
Luton Town	3.01
Manchester City	2.67
All Division 1	3.70

MASCOT

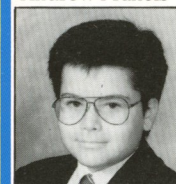


Andrew Gill

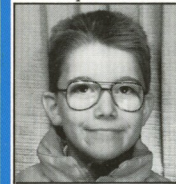
ESCORTS



Andrew Francis



Christopher Brown



Gary Bavister



Victoria Arnold

JUNIOR HATTERS!



BY DANNY WILSON

JOIN OUR EASTER EGG QUIZ - AND GOOD LUCK!

This afternoon we extend a warm welcome to Middlesbrough. We still have some places left on the coach for the trip to Arsenal. If you are a Junior Hatter and would like to go on this trip book today from the Souvenir Shop in Oak Road.

As Easter is only a few weeks away I am going to give away 24 Easter Eggs to the first 24 Junior Hatters that can give me the correct answer to this question: Luton played in a league game with three goalkeepers - can you give me their names and the score? This competition is only open for Junior Hatters members.

All entries to be sent to Bev Tyler by Monday March 13th. You must put your membership number and your name and address on your entry, please. The first 24 correct entries out of the hat will each receive an Easter Egg. Good Luck!

Today's lucky Junior Hatters membership number is H0188091345. The winning member should contact Bev Tyler in the Souvenir Shop at Oak Road with his or her membership card, for two free tickets to one of our home matches.

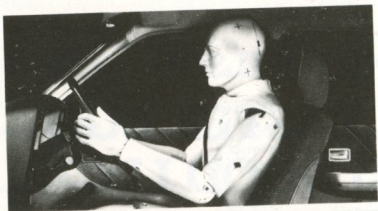
What a good game it was at Upton Park on Sunday. I hope you watched it on TV if you were unable to travel to West Ham. We must try to put all the excitement behind us and concentrate on the League today and score some goals like we did on Sunday to make our position a bit more stable.



FIRST WITH NEWS - MAGIC WITH MUSIC

24HRS EVERY DAY ON 828kHz AM. AND 97.6mhz FM.

Introducing 5-wheel drive.



As you can see, this is not some new kind of vehicle for negotiating rough terrain.

It is, in fact, Saginaw Tilt Wheel Steering.

A special factory-fitted extra that can alter the way you drive.

The wheel adjusts to five separate positions.

So, from a driver's point of view, it can make life a lot more comfortable.

In turn, making driving far safer.

(Added to which, a unique Saginaw energy-absorbing column comes as standard.)

Changing the angle of the wheel takes no effort whatsoever.

By moving a small lever on the steering column, it can be set to the ideal position.

Tilted down, it's easy to imagine what a fast sports car feels like.

Tilted up, it's like being behind the wheel of a bus.

This last position also provides more leg room, so getting in and out of a car becomes a much simpler exercise.

But it's not only you who will benefit from Saginaw Tilt Wheel Steering.

Anyone who drives your car will too. Because it will make it more adaptable to any driver's individual needs.

Not many extras make a car so flexible. And certainly not for just £88 (plus Car Tax plus VAT).

Saginaw Tilt Wheel Steering is available as an optional extra on most new Vauxhall-Opel cars.*

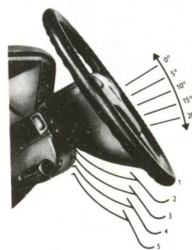
So contact your nearest Vauxhall-Opel dealer for a chat.

He'll be able to tell you more about 5-wheel drive and exactly how it handles.



Degrees more comfortable. Degrees safer.

*STANDARD EQUIPMENT ON SOME MODELS



COMMERCIAL COMMENT BY WENDY GREAVES



FOUR FIRMS TEAM UP TODAY

This afternoon's match sponsorship has been taken jointly by four companies - Watson Ltd., Alliance Estates, Hertfordshire BTR and Milcatt Engineering.

Eaton is part of a corporation that manufactures advanced technology products for automotive, electronics, defence and capital goods markets worldwide. The company has 140 facilities in 20 countries on six continents and employs 43,000 people. Eaton makes the Cutler-Hammer brand of industrial control gear, Dynamatic variable speed drives and Durant programmable timers and counters. The company was established in Elstow Road, Bedford in 1906.

Alliance Estates, based at Manor House, Barton has been established five years and is an active development company. Local projects include the redevelopment of the Rank Club in Hill Street for luxury offices and maisonettes. Other projects include a sheltered housing scheme.

Hertfordshire BTR and Milcatt Engineering are companies who have both supported the club for many seasons and their continued support is very much appreciated. We hope all four companies enjoy a very successful Luton Town day.

Ball Sponsors

Our ball sponsors this afternoon are Princess Hats. Established in 1980, Princess Hats are run by managing director Bob Parsons who has operated successfully at the same premises in Reginald Street, Luton, for 30 years. For the past six years, Bob has been helped by his daughter and youngest son the business which supplies hats for ladies fashion worldwide.

Today's MATCH SPONSOR

Cutler-Hammer Products Supporting Your Future

Eaton is a combination of products and people helping industry to grow into the future. It's how we bring Cutler-Hammer products and service together for you - our customers - that makes us stand out from the crowd.

Our range of industrial automation products includes:

- A.C. Starters.
- Switch Disconnects and Fuse Carriers.
- Contactors and Overload Relays.
- Control Relays and Timers.
- Pushbuttons indicating lights, selector switches and foot switches.
- Limit switches, inductive proximity and photo electric sensors.
- Programmable Controllers.
- Electronic Motor Protection.
- A.C. Variable Speed Drives.
- Soft Starters.
- Programmable Timers and Counters.
- Power Resistors.
- Motor Control Centres.
- Eaton Limited Power Control Division Elstow Road Bedford MK42 9LH Tel 0234 267433.

EAT•N



● **Defensive power:** David Beaumont shows his strength during the reserves clash with Millwall on February 7.

SOUTH EAST COUNTIES LEAGUE DIVISION TWO 1988/89

	P	W	D	L	F	A	Pts
Swindon Town	21	13	4	4	39	26	30
Wimbledon	20	12	2	6	44	30	26
Brentford	19	11	5	3	40	21	27
Luton Town	20	9	7	4	57	34	25
Oxford United	19	11	2	6	26	25	24
Crystal Palace	20	9	4	7	41	24	22
Southampton	18	9	4	5	33	21	22
A.F.C. Bournemouth	19	9	3	7	35	28	21
Colchester United	20	6	4	10	30	34	16
Bristol City	17	3	9	5	20	25	15
Tottenham Hotspur	21	6	3	12	34	48	15
Brighton & Hove Albion	20	4	6	10	23	35	14
Reading	20	5	4	11	33	62	14
Northampton Town	19	4	5	10	35	42	13
Bristol Rovers	20	3	4	13	20	51	10

OVENDEN FOOTBALL COMBINATION 1988/89

	P	W	D	L	F	A	Pts
Tottenham Hotspur	23	16	6	1	58	19	38
Arsenal	20	16	4	0	57	21	36
Wimbledon	25	16	3	6	51	25	35
Luton Town	28	12	10	6	66	40	34
Watford	22	12	7	3	56	32	31
Chelsea	23	11	5	7	43	35	27
Oxford United	23	10	5	8	53	53	25
Norwich City	24	10	4	10	44	43	24
Millwall	20	8	6	6	41	27	22
Swindon Town	21	9	4	8	44	39	22
West Ham United	26	7	8	11	38	42	22
Southampton	25	8	6	11	39	51	22
Crystal Palace	22	7	7	8	30	31	21
Brighton & Hove Albion	24	5	10	9	33	50	20
Fulham	22	8	3	11	32	44	19
Ipswich Town	22	7	4	11	32	44	18
Charlton Athletic	21	5	4	12	36	47	14
Queens Park Rangers	21	3	4	14	19	42	10
Portsmouth	20	3	2	15	18	58	8
Reading	22	2	2	18	21	68	6



● **Aerial challenge:** Iain Dowie in action against Millwall.

OVENDEN PAPERS FOOTBALL COMBINATION 1988/89

Date	Opponents	Result	Date	Opponents	Result
1988			1989		
Aug 27	Southampton	3-2	Jan 4	Brighton	2-2
Sept 6	Norwich City	2-3	Jan 7	Crystal Palace	0-0
Sept 10	Swindon T	1-1	Jan 14	Reading	4-1
Sept 17	Watford	2-2	Jan 17	Chelsea	2-2
Sept 24	Oxford United	7-1	Jan 21	Wimbledon	1-3
Oct 1	Arsenal	2-3	Jan 28	Southampton	7-2
Oct 5	Norwich	2-1	Feb 4	Tottenham	1-2
Oct 11	Brighton	3-0	Feb 7	Millwall	0-2
Oct 15	Watford	4-0	Feb 14	Swindon T	0-2
Oct 18	Charlton A	1-0	Feb 25	West Ham	
Oct 22	Wimbledon	0-2	Mar 4	Arsenal	
Oct 29	Reading	4-2	Mar 15	Crystal Palace	
Nov 1	Fulham	0-3	Mar 21	Charlton A	
Nov 5	Ipswich Town	2-1	Mar 25	West Ham	
Nov 9	QPR	1-0	Apr 1	Fulham	
Nov 12	Chelsea	1-1	Apr 11	Ipswich T	
Nov 15	Portsmouth	7-0	Apr 22	Portsmouth	
Nov 22	Millwall	2-2			
Nov 26	QPR	1-1			
Nov 30	Oxford United	3-3			
Dec 31	Tottenham	1-1			

COACHES' CORNER



RESERVES AND YOUNGSTERS LOSE THEIR WAY

After such outstanding runs of results, both the reserves and youth teams have had to taste defeat in recent weeks. The reserves, who were unbeaten in 12 games until January, have not lost three in succession, the latest demise coming at Swindon on Tuesday when they were defeated 2-0. Coach Jim Ryan was disappointed at the result and said the Town had plenty of possession. He said: "We controlled much of the first half and a great deal of the second, but did not really put pressure on their goal and our work on the final ball was not 'clean' enough. They - Swindon - were only really in the game after their goals for short spells."

Windy day

The defeat at Swindon followed a 2-0 home defeat to Millwall on February 7 and a 2-1 loss at Tottenham on February 4. The team in action at Swindon on a windy afternoon on a bumpy pitch was: Chamberlain, R. Johnson Harvey, Johnson M., James, Cobb, O'Brien, McDonough, Rees, Oldfield, Dowie. Subs (not used) Gray and Poutch.

The youth team suffered their first defeat of 1989 on February 11 when they were beaten 5-1 by Bristol City. Gary Crawshaw scored the Town's goal. The match ended a strong run which raised hopes of a powerful challenge for the championship of the South East Counties League and coach John Faulkner is adamant that despite the result the title is still a realistic ambition. But he was very disappointed at the manner of the defeat - the Town youngsters having two players sent off in a thoroughly indisciplined performance. Ceri Hughes and Alan O'Sullivan were dismissed for dissent and their absence cost the team the match.

GREAT SAVES.



At Barclays we have a great range of savings schemes, so however large or small the amount you have to save you're sure to find one that suits you.

We can offer everything from special accounts for young people with just £1 to save, to premium rate savings accounts like Capital Advantage for those with £10,000 or more to invest.

Ask at your local branch for details.

With Barclays on your side you're bound to get a good result.

•••YOU'RE
BETTER OFF
TALKING TO
BARCLAYS

MEMBER OF IMRO

PHOTO FILE



• No joy at Ayresome Park: Mick Harford and David Oldfield are pictured in action at Middlesbrough last October where the Town were beaten 2-1. Pictures by Josh Levy of Apex Photography.



LUTON TOWN Goal'den Oldies

FINE WORK BY DAW HELPED TO KEEP THE SCORES EVEN

We welcome back, after a long absence, Middlesbrough to Kenilworth Road for what will be only our eleventh league meeting here, writes club statistician Roger Wash.

Our first ever league clash took place at Middlesbrough on 21st October 1899 and a reporter of the day made the following comments, "Although the weather at Middlesbrough was very foggy, fully 7000 spectators witnessed this game where another pointless draw resulted. Had it not been for the very fine goalkeeping by Luton custodian Daw, there is a probability that the visitors would have been badly beaten, for on several occasions during the match he saved brilliantly. Taken altogether the game was an excellent one and well worth watching". They do not write like that anymore!

"The Town bowed out of the league at the end of the season"

The return took place at Dunstable Road the following February when a 1-1 draw resulted, with the Towns goal being scored by William Brown. The Town decided to bow out of the Football League at the end of that season mainly due to the cost of travelling in what was a predominantly Northern-based competition and it was not until 1954 that the two teams met again.

Middlesbrough were relegated from Division One at the end of 1953/54 but the anticipated clashes were shortlived as the Town went in the other direction the following season.

The first meeting was at Ayresome Park on 11th September 1954 where a crowd of 15,891 watched a 2-0 Town win with the goals being scored by Roy Davies and Gordon Turner. The same two players were on the scoresheet as the Town won with an identical scoreline in the return the following January on the way to promotion.

Luton were relegated five years later and then spent three fairly miserable years in Division Two before dropping further. One of the few bright spots however was the form shown in games against Middlesbrough with five out of the six games won – the only defeat being at Ayresome Park in a meaningless end of season game in 1960/61.

Earlier that season the Town had thrashed a Middlesbrough side which included Brian Clough, 6-1 with Turner, again on the scoresheet hitting home two penalties. In the other four games won by the Town, Turner managed to score in each and it was probably

a very relieved Middlesbrough that said goodbye to Luton at the end of 1962/63.

After suffering a further drop to Division Four the Town fought back and eventually rejoined Middlesbrough at the start of season 1970/71 when honours remained even with Don Givens scoring with a flying header to give Luton a 1-0 win at Kenilworth Road and Malcolm MacDonald giving the Town the lead at Ayresome Park. Luton eventually went down 2-1 thus severely denting their promotion chances.

Promotion came the Towns way three seasons later going up in second place to Middlesbrough who finished fifteen points ahead of the rest in the days of two points for a win. Boro were obviously an outstanding side that season and achieved the double over the Town but not before encountering problems along the way.

Barry Butlin gave the Town the lead in the game at Ayresome Park on 3rd November 1973 but despite having most of the play Luton somehow allowed Boro to claw back and win the game 2-1. The return at Luton was rather different, however, with Boro putting on a thoroughly professional performance, soaking up Luton pressure in the first half and scoring a single goal in the second to clinch promotion before a grudgingly appreciative crowd of 19,812. All this before the end of March as well!

Our previous encounters with Middlesbrough

	Home	Away
1899/1900	1-1	0-0
1954/55	2-0	2-0
1960/61	6-1	1-2
1961/62	3-2	4-2
1962/63	4-3	2-0
1970/71	1-0	1-2
1971/72	3-2	0-0
1972/73	0-1	1-0
1973/74	0-1	1-2
1974/75	0-1	1-1
1988/89	–	1-2

Summary

	P	W	D	L	F	A
Home	10	6	1	3	20	12
Away	11	4	3	4	14	11
	21	10	4	7	34	23



• **Bruce Rioch:** A Luton favourite from the 1960's and 1970's – now in charge of today's visitors

Luton News

LUTON TOWN FOR TOP SOCCER LUTON NEWS FOR TOP COVERAGE

For the best match reports, and all the latest news and views from Kenilworth Road, get the
LUTON NEWS and DUNSTABLE GAZETTE

THURSDAYS 14p

INTRODUCING...

MIDDLESBROUGH

Today we welcome a Middlesbrough side now back in Division One and doubtless reflecting on just how many things have happened to them since they won a First Division game here with an Alan Foggon goal in October 1974. Whilst we have played in Division Two since then, Boro have played in both Division Two and Division Three and their financial problems of a couple of years ago were even more serious than ours of the seventies, writes *Geoff Allman*.

Founded in 1876 they were the second side in their town to gain Football League status, the old Middlesbrough Ironopolis having had a brief spell in Division Two while the present clubs were still outside the Football League. In fact the first honour that today's club won was the F.A. Amateur Cup, which they won in both 1895 and 1898. They turned professional in 1899, were elected to the Football League in the

same year and won promotion in 1902.

Boro's first 'big' name was goalkeeper Tim Williamson, who played for 21 seasons at the turn of the century, but since then some of the most famous strikers in the game's history graced their ranks. There were Steve Bloomer and Alf Common before the First World War, George Camsell and Micky Fenton between the wars and in more recent times England men Alan Peacock and Brian Clough. They have also fielded one of the greatest inside forwards of all time in fair-haired Wilf Mannion, who played for them for 18 seasons reaching his peak just after the war.

Boro have tended to have substantial spells in Division One and they are now in their fourth spell their, the previous three lasting 18, 18 and 8 seasons respectively. They slipped to Division Three for the first time ever in 1967, but bounced straight back up again and history



Back Row (left to right): Garry Robinson, Colin Cooper, Kevin Poole, Matthew Coddington, Stephen Pears, Mark Burke, Trevor Senior. Middle Row: Tony Mowbray, Gary Pallister, Stuart Ripley, Alan Kernaghan, Nicky Mohan, Drew Coverdale, Garry Agnew, Owen McGee, Michale Trotter. Front Row: Gary Hamilton, Gary Parkinson, Gary Gill, Paul Kerr, Mark Brennan, Dean Glover, Bernie Slaven.

repeated itself 20 years later when they went down in 1986 but bounced back in 1987.

That was one of the most remarkable recoveries in the history of the game for they began the season locked out of their own ground and playing at nearby Hartlepool. Then last season they began quietly but then climbed to top place with a run of 14 games without defeat up to Boxing Day. Then they stayed in the top five and had promotion within their grasp when a home defeat by Leicester landed them in the playoffs. Undeterred they beat Bradford City 3-2 on aggregate and then beat Chelsea by the same score after a tense second game in front of over 40,000 fanatical fans at Stamford Bridge.

"After three defeats Boro recovered with a run of home wins"

This season they kicked off with three successive defeats, but then they beat Wimbledon, West Ham, ourselves, Millwall and QPR in successive home games and also won at Coventry. Away form has been a little shaky since then but they have in the last couple of months drawn at Nottingham Forest and Norwich and won at Southampton.

Scotman **Bernie Slaven**, formerly with Airdrie, Queen of the South and Albion Rovers is leading scorer for the second successive season and he has been joined this season by **Peter Davenport**, formerly with Manchester United and Nottingham Forest. **Paul Kerr** (from Aston Villa two years ago) links up in midfield with home-grown **Stuart Ripley**, Scotsman **Gary Hamilton** and **Mark Brennan**, who cost £375,000 from Ipswich this season.

England man **Gary Pallister** and **Tony Mowbray** are one-club men at the heart of the defence with **Gary Parkinson**, a former Everton junior and England under-21 cap **Colin Copper** on the flanks. In goal **Stephen Pears** has scarcely missed a game since moving from Manchester United in 1985. Substitutes recently have included former Aston Villa England Youth cap **Mark Burke** and 18-year-old **Nicholas Mohan**.

Follow the Hatters ... on SPORTSOUND
Saturdays 2pm - 6pm
with John Smith

BBGRADIO
BEDFORDSHIRE

Weekdays — Sports News at
6.35/7.35/8.35 am
12.45/5.20/6.20 pm

AM: 630 kHz
FM/VHF: 95.5 MHz
COUNTYWIDE

(AM Bedford: 1161 kHz
FM/VHF Luton: 103.8 MHz)

FOR THE COMPLETE BUILDING SERVICE AND HOME IMPROVEMENTS

T. J. ALDRIDGE
Builders

302 Selbourne Road, Luton, Beds LU4 8NU.
Telephone: 505412-505413

EXTENSION SPECIALISTS

ESTIMATES FREE

B. DOHERTY
SKIPHIRE

34 MOUNT PLEASANT ROAD
LUTON
Telephone: 574633 & 574799

FIRST TEAM

UPDATE

1988-89 SEASON

BARCLAYS FOOTBALL LEAGUE DIVISION ONE

P	W	D	L	F	A	Pts	W	D	L	F	A	Pts
23	6	3	1	19	10	19	9	2	2	31	14	50
24	5	6	2	17	14	17	8	2	1	19	11	47
24	7	4	1	20	7	20	3	5	4	14	12	39
24	3	6	2	13	10	13	6	5	4	21	16	38
24	6	2	4	19	12	12	4	5	3	14	13	37
23	4	5	2	12	7	12	5	4	3	18	13	36
23	7	1	3	20	12	12	3	5	4	15	18	36
23	5	2	6	15	12	12	5	3	2	11	6	35
23	5	4	2	19	12	12	3	4	5	9	13	32
23	6	2	4	14	13	13	3	3	5	13	17	32
23	6	4	2	18	13	13	2	2	7	12	22	30
24	6	3	3	19	14	14	1	5	6	14	23	29
22	4	5	3	21	20	20	2	4	5	13	16	27
24	4	5	4	21	20	20	2	4	5	15	26	27
23	4	5	2	18	11	11	2	3	7	8	18	26
24	4	2	5	12	10	10	2	5	6	12	14	25
24	2	5	6	16	22	22	3	4	4	10	13	24
23	3	3	5	10	16	16	2	5	5	8	17	23
24	2	4	6	12	18	18	3	2	7	9	25	21
23	1	3	7	11	22	22	3	2	7	9	19	17

LEADING SCORERS: 21 Alan McInally (Aston Villa), 19 Alan Smith (Arsenal), 15 Dean Saunders (Derby), 14 Tony Cascarino (Millwall), Mark Hughes (Manchester United) Brian McClair (Manchester United), Paul Williams (Charlton).

APPEARANCES AND GOALSCORERS

	League		Littlewoods Cup		FA Cup	
	Aps	Gls	Aps	Gls	Aps	Gls
Ian Allinson	1(3)	-	-	-	-	-
David Beaumont	-	-	1	-	-	-
Kingsley Black	21	8	7	-	1	1
Tim Breacker	4(2)	-	3(2)	-	-	-
Mal Donaghy	6	-	2	-	-	-
Iain Dowie	(1)	-	1	-	-	-
John Dreyer	10	-	5	-	-	-
Steve Foster	23	1	7	-	1	-
Ashley Grimes	6	-	3	-	-	-
Mick Harford	19	6	5	2	1	-
Richard Harvey	8	-	1	-	1	-
Ricky Hill	18	1	6(1)	3	1	-
Julian James	1	-	1	-	(1)	-
Marvin Johnson	15	-	2	-	1	-
Rob Johnson	19(2)	-	3	1	1	-
Darron McDonough	2	-	-	-	-	-
David Oldfield	15(5)	1	4(1)	2	(1)	-
David Preece	13	-	4	-	1	-
Les Sealey	23	-	7	-	1	-
Roy Wegerle	16(4)	7	5	4	1	-
Steve Williams	10	-	3	-	-	-
Danny Wilson	23	3	7	2	1	1

Luton Town F.A. Att Pos 1

Aug 27	Sheffield Wednesday	0-1	-	-	Sealey
Sept 3	Wimbledon	2-2†	8067	12	Sealey
Sept 10	Southampton	1-2	13,214	16	Sealey
Sept 17	Manchester United	0-2	11,010	18	Sealey
Sept 24	Everton	2-0	26,170	15	Sealey
Sept 27	Burnley (LC2)	1-1	6,282	15	Sealey
Oct 1	Nottingham Forest	0-0	15,340	17	Sealey
Oct 8	Liverpool	1-0	12,117	13	Sealey
Oct 11	Burnley (LC2)	1-0	14,031	13	Sealey
Oct 22	Middlesbrough	1-2	17,749	16	Sealey
Oct 25	Arsenal	1-1	10,548	16	Sealey
Oct 29	Queens Park Rangers	0-0	8,453	16	Sealey
Nov 2	Leeds United (LC3)	2-0	19,447	16	Sealey
Nov 5	Millwall	1-3	12,511	16	Sealey
Nov 12	Coventry City	0-1	12,631	16	Sealey
Nov 19	West Ham United	4-1	9,308	16	Sealey
Nov 26	Norwich City	2-2	13,541	15	Sealey
Nov 29	Manchester City (LC4)	3-1	10,778	15	Sealey
Dec 3	Newcastle United	0-0	8,338	16	Sealey
Dec 10	Derby County	1-0	15,228	15	Sealey
Dec 17	Aston Villa	1-1	8,785	16	Sealey
Dec 26	Tottenham Hotspur (1.30 am)	0-0	27,337	16	Sealey
Dec 31	Wimbledon	0-4	4,899	16	Sealey
Jan 2	Southampton (3 pm)	6-1	8,637	15	Sealey
Jan 7	Millwall (FAC3)	2-3	12,504	15	Sealey
Jan 10	Crystal Palace (S3)	1-4	5,842	15	Chamberlain
Jan 14	Charlton Athletic	0-3	5,212	16	Sealey
Jan 18	Southampton (LC5)	1-1	11,785	16	Sealey
Jan 21	Everton	1-0	9,013	13	Sealey
Jan 25	Southampton (LC5R)	2-1	10,250	13	Sealey
Feb 4	Nottingham Forest	2-3	10,465	14	Sealey
Feb 12	West Ham (LCSF)	3-0	24,602	15	Sealey
Feb 18	Middlesbrough (FAC 5)				
Feb 25	Arsenal				
Mar 1	West Ham (LCSF)				
Mar 11	Millwall				
Mar 18	Sheffield Wednesday (FAC6)				
Mar 25	Manchester United				
Mar 27	Tottenham Hotspur				
Apr 1	Aston Villa				
Apr 8	Charlton Athletic				
Apr 15	Coventry City (FAC6/1)				
Apr 22	Newcastle United				
Apr 29	Derby County				
May 6	West Ham United				
May 13	Norwich City				
May 14	F.A. Cup Final				
To be arranged Liverpool (A) & QPR (A)					

© The Football League FAC = F.A. Cup () indicates player substituted

2	3	4	5	6	7	8	9	10	11	12
Breacker	Dreyer	Williams	Foster	Donaghy	Wilson	(Wegerle)	Harford	Oldfield	Black	RJ/[1A]
R. Johnson	Grimes	Williams	Foster	Donaghy	Wilson	Preece	Harford	Oldfield	Black ¹	JD/RW
R. Johnson	Grimes	Williams	Foster ¹	Donaghy	Wilson	Oldfield	Harford	(Preece)	Black	TB/[RW]
R. Johnson	Dreyer	Williams	Foster	M. Johnson	Wilson	(Oldfield)	Harford	Hill	Black	[RW]/TB
R. Johnson	Dreyer	Williams	Foster	Donaghy	Wilson	Oldfield ¹	Harford	Hill	Black ¹	TB/IA
(R. Johnson ¹)	Dreyer	Williams	Foster	Donaghy	Wilson	Oldfield	Harford	Hill	Black	[TB]/IA
R. Johnson	Dreyer	Williams	Foster	Donaghy	Wilson	Oldfield	(Harford)	Hill	Black	[IA]/TB
R. Johnson	Dreyer	Williams	Foster	Donaghy	Wilson	(Oldfield)	Harford ¹	Hill	Black	[RW]/TB
(R. Johnson)	Dreyer	Williams	Foster	Donaghy	Wilson	Oldfield	Harford	Hill ¹	Black	[TB]/IA
(R. Johnson)	Dreyer	(McDonough)	Foster	M. Johnson	Wilson ^{1P}	Oldfield	Harford	Hill	Black	[TB]/[RW]
R. Johnson	Breacker	(McDonough)	Foster	M. Johnson	Wilson	Wegerle	Harford	Hill	Black ¹	[DO]/IA
R. Johnson	Dreyer	Williams	Foster	M. Johnson	Wilson	(Allinson)	Wegerle	Hill	Black	[DO]/RH
J. James	Dreyer	Williams	Foster	M. Johnson	Wilson ¹	Oldfield ¹	Wegerle	Hill	Black	IA/AG
(J. James)	Dreyer	Williams	Foster	M. Johnson	Wilson ¹	Wegerle	Oldfield	Hill	Black	[RJ]/AG
R. Johnson	Grimes	(Williams)	Foster	M. Johnson	Wilson	Wegerle	Harford	Hill	Black	[DO]/JJ
R. Johnson	Grimes	Preece	Foster	M. Johnson	Wilson ¹	Wegerle ²	Harford	Oldfield	Black ²	RH/IS
R. Johnson	Harvey	Preece	Foster	M. Johnson	Wilson	Wegerle ²	Harford	Oldfield	Black	JD/IA
R. Johnson	Harvey	Preece	Foster	M. Johnson	Wilson	Wegerle ²	(Harford)	Oldfield ¹	Black	[RH]/JD
R. Johnson	Harvey	Preece	Foster	M. Johnson	Wilson	Wegerle	(Oldfield)	Hill	Black	[IA]/JJ
R. Johnson	Harvey	Preece	Foster	M. Johnson	Wilson	(Wegerle)	Harford ¹	Hill	Black	[DO]/JD
R. Johnson	Harvey	Preece	Foster	M. Johnson	Wilson	Wegerle ¹	Harford	Hill	Black	DO/JD
R. Johnson	Harvey	Preece	Foster	M. Johnson	Wilson	Wegerle	Harford	Hill	Oldfield	KB/JD
R. Johnson	Harvey	Preece	Foster	M. Johnson	Wilson	Wegerle	Harford	Hill	Oldfield	TB/KB
R. Johnson	Harvey	Preece	Foster	M. Johnson	Wilson	Wegerle ²	Harford ²	Hill ¹	Black ¹	TB/ID
R. Johnson	Harvey	Preece	Foster	M. Johnson	Wilson ^{1P}	Wegerle	Harford	Hill	(Black) ¹	[DO]/JJ
Breacker	Dreyer	Preece	James	M. Johnson	(Williams)	Dowie ¹	Harford	Hill	Oldfield	[RW]/RH
R. Johnson	(Harvey)	Preece	Foster	M. Johnson	Wilson	Wegerle	(Oldfield)	Hill	Black	[TB]/ID
Breacker	Grimes	Preece	Foster	Dreyer	Wilson	Wegerle	Dowie	Hill	Black	RJ/DO
Breacker	Grimes	Preece	Foster	Dreyer	(Wilson)	Wegerle ¹	Harford	Hill	(Black)	[ID]/RJ
Breacker	Grimes	Preece	Foster	Dreyer	Wilson	Wegerle	(Harford ¹)	Hill ¹	Black	[DO]/RJ
Breacker	Grimes	Preece	Foster	Dreyer	Wilson	Wegerle	Harford ¹	Hill	Black ¹	[DO]/RJ
Breacker	Grimes	Preece	Foster	Beaumont	Wilson ^{1P}	Wegerle ¹	Harford ¹	Hill	Black	RJ/DM



HELPING THE GAME

The Football Trust receives £9 million annually from the Sporting the Ball competition run by Littlewoods, Verners and Jerrys and spends it all on projects which benefit football throughout the United Kingdom.

Since 1975 it has been committed to the development of the game at every level and its broad and varying initiatives have ranged from essential safety work at Tottenham to social work at Tottenham, refurbishment at Watford to repairs at Watford, closed circuit television at all League clubs to community facilities at Oxford Athletic, transport improvements at Sheffield Wednesday to storm damage in the South East of England, from policing costs at Hull City to an artificial pitch at Hull United.

1988-89 will see The Football Trust increase its commitment by investing further sums in closed circuit television, transport facilities for supporters and projects to bring Football League clubs closer to their local community.

SAFETY FIRST

Football grounds in England and Wales have reached their highest ever level of safety thanks to the £23,671,425 invested by the Football Grounds Improvement Trust since 1975.

Almost every League club has been assisted with essential safety work and further substantial sums have been spent to enable them to improve facilities. In the past year alone FGIT grants to Football League clubs totalled

Safety improvements	£ 2,254,723
	770,561

In addition to its safety programme, FGIT has also allocated £1.5 million to build or improve family and disabled facilities at League grounds during 1988.

WARNING

At the beginning of the season more than 110 League grounds in England, Wales and Scotland will be equipped with CLOSED CIRCUIT TELEVISION which has been funded by The Football Trust.

It is there to increase crowd safety and to help the police. Recording facilities enable film and photographs to be taken of disorder which may subsequently be used in a court of law.

CLOSED CIRCUIT TELEVISION

[] indicates substitute used Home fixtures in **Bold** Scorer's name in **Bold** P = Penalty † denotes own goal

Probably
the world's most
advanced and researched
sportswear



Abacus Press

Interplan House, North Bridge Road,
Berkhamsted, Herts HP4 1ET.
Tel: (0442) 874391 Fax: 874873

Voucher No. 15

VAUXHALL TEAM CHECK.

Luton Town

- 1 Les Sealey
 - 2 Tim Breacker
 - 3 Ashley Grimes
 - 4 David Preece
 - 5 Steve Foster
 - 6 David Beaumont
 - 7 Danny Wilson
 - 8 Roy Wegerle
 - 9 Mick Harford
 - 10 Ricky Hill
 - 11 Kingsley Black
- Subs

Middlesbrough


- 1 Stephen Pears
 - 2 Nicky Mohan
 - 3 Colin Cooper
 - 4 Tony Mowbray
 - 5 Gary Hamilton
 - 6 Gary Palister
 - 7 Bernie Slaven
 - 8 Mark Brennan
 - 9 Mark Burke
 - 10 Paul Kerr
 - 11 Stuart Ripley
- Subs

Referee: B. HILL (Kettering) Linesmen: J. H. PARKER (Yellow Flag) A. SCHNEIDER (Red Trim)

QUICK OFF THE MARK. GOOD AT PASSING.



VAUXHALL. ONCE DRIVEN, FOREVER SMITTEN.

 VAUXHALL IS BACKED BY THE WORLDWIDE RESOURCES OF GENERAL MOTORS. CAR SHOWN ASTRA GTE.

Designed and printed by Abacus Press, Berkhamsted, Herts.