

OFFICIAL PROGRAMME £1.00

NOTTINGHAM FOREST

BARCLAYS FOOTBALL LEAGUE DIVISION ONE



Saturday, February 4th, 1989 Kick-off 3.00 p.m.

LUTON TOWN

This match is sponsored by: Luton International Airport

HARFORD AND HILL SINK SAINTS



• **Number one:** Mick Harford heads the first goal during our 2-1 extra-time win over Southampton in last week's Littlewoods Cup quarter-final replay.

LUTON TOWN HOTLINE

Match Tickets, Match Enquiries, Membership, Junior Hatters:

Ring - Cherry Newbery,
Ticket Supervisor - Luton (0582) 411622
24 Hour Service - Luton (0582) 30748

Advertising and Match Sponsorship:

Ring - Wendy Greaves, Marketing Executive
Luton (0582) 411622

Stadium Hire/Special Events: Ring - Mike Beevor,
Special Events Manager Luton (0582) 411622

Souvenirs/Adidas Sportswear: Ring - Bev Tyler,
Sales Supervisor Luton (0582) 411622

Banqueting & Function Facilities:

Ring - Catering Manager Luton (0582) 411526

Promotions Office: Lotteries - Ring John Gornall,
Development Executive Luton (0582) 416976

Soccerline for all the up-to-date information on Luton

Town F.C.: Ring - 0898 700273

Club Office hours: 8.30 am - 6 pm. Luton (0582) 411622

Edited by: Robert Alexander Associates

Pictures by: Apex Photography, Milton Keynes

OGDEN & CLEAVER

320-328 Selbourne Road, Luton, Beds. LU4 8NY
Tel: (0582) 597631.

The biggest selection of Wallcoverings in Luton.

Quality Paints by Dulux, Manders, Sandtex & Sadolin.

Glass cut to size

Wide selection of mirrors and other decorative items.

SPECIAL DISCOUNTS FOR LUTON TOWN MEMBERS

Part of the Manders Group



• **Pressing hard:** David Oldfield (top) and Ricky Hill (below) press for a goal during the replay at The Dell.



Direct Booking!

Direct Saving!

Direct from Luton to
Florida & Mexico

01-727 2680

Access/Visa ATOL 1071

Tjaereborg
LIMITED





The Rascal. A real half-tonner.

BEDFORD RASCAL 
BACKED BY THE WORLDWIDE RESOURCES OF GENERAL MOTORS

RAY'S REVIEW



Welcome to Nottingham Forest who have established themselves as one of the outstanding teams of the season with their recent form in all competitions. We know we shall be in for a very testing match today, but we believe we have the all-round footballing ability to cope.

Since my last notes, we have enjoyed a turn of fortunes where results are concerned, beating Everton in a very important First Division fixture here and then squeezing through to the Littlewoods Cup semi-finals with a narrow replay win over Southampton after extra time. The results have obviously had a good affect on team spirit. I was pleased with both. We looked the stronger side at Southampton the longer the game went on and I felt we deserved to win after surviving their second-half onslaught.

As you will know, I have moved in the transfer market and signed Scottish defender David Beaumont from Dundee United. He is a good, clean technical player with passing ability and I hope he enjoys a long and successful career at Luton.

Last Friday, we all enjoyed Brian Stein's testimonial match when there were some spectacular goals scored during the meeting with his current French club SM Caen. Mossie scored with a chip and Brian from a curling free kick. It was a very pleasant game and a nice evening.

The only serious bad news has been a knee ligament injury suffered by Sean Farrell. He has been in fine form recently and knocking at the door. It is a severe setback. We all hope he makes a full recovery.

This afternoon's fixture could be the first of a series at home. Enjoy the match and give the team your support.

Ray Harford

LUTON TOWN



KENILWORTH ROAD STADIUM, 1 MAPLE ROAD, LUTON, BEDS LU4 8AW

CHAIRMAN
David Evans MP

DEPUTY CHAIRMAN
Brian Cole

DIRECTORS
M. Aleyan, T.W. Bailey,
E.S. Pearson, R.J. Smith
J.R. Smith, D.G. Watson-Challis

MANAGING DIRECTOR
John Smith

PRESIDENT
Cecil Holloway

TEAM MANAGER
Ray Harford

GENERAL SECRETARY
Bill Tomlins

HONORARY LIFE MEMBERS
J. Richardson
T. Hodgson

VICE PRESIDENTS
R.L. Banks
C. Bygrave, C.J. Evans
E. Fountain, I.E. Holmes
R. Larkinson, R. Safranek
E. Waller

HONOURS

LITTLEWOODS CUP WINNERS - 1987-88
FA CUP FINALISTS - 1958-59
SIMOD CUP FINALISTS - 1987-88
CHAMPIONS - DIVISION 3(S) 1936-37
CHAMPIONS - DIVISION 4 1967-68
CHAMPIONS - DIVISION 2 1981-82



Mailbag

Write to: The Editor, Luton Town F.C.,
Kenilworth Road Stadium, Maple Road, Luton by Tuesday a.m.

Fan of Mick

Dear Sir,
I would just like to say thanks, as a big fan of Luton Town and especially Mick Harford how well I think Mick is playing this season. This may have been said many times before but I would just like to reiterate how his overall contribution and performance to the team has made such a difference. He may not be scoring so many goals this season but I'm sure that will change soon.

I also hope Mick gets the England recognition he deserves in the future. Thank you for letting me air my views in your column.

GOOD LUCK TO THE HATTERS!

Yours faithfully

Karen Jardine

5 Dawlish Road
Luton

A classy player

Dear Sir,
How good it was to see Brian Stein back at Kenilworth Road for his testimonial match recently. Obviously after his recent injury he is lacking match fitness, but all those lovely 'turns' and 'touches' are still there for all to see. His wonderful 'curler' of a free kick showed just what a class player 'Bruno' is. Tactically, I reckon Brian is irreplaceable as a 'link-man', goal maker and taker all rolled into one. It was also good to see 'old

campaigner' David Moss back in Luton. His delightful 'chip' from some 35 yards was 'vintage Mossy' - those goals were worth going to see on their own! It's a shame age has caught up with Dave, as apart from losing his pace, he still showed what a brilliant passer he is, you might say "he can almost make the ball do anything!"

It was lovely to see Lil Fucillo, Paul Price and the superb 'Basher' (Kirk Stephens) back also for Brians game. The Luton fans will always hold affection for the 'characters' of recent 'Hatters History'.

However, whichever way we look at things, we cannot 'turn the clock back' and languish in the past, that's why the brilliant display at Southampton was such a bonus last week. I thought the whole side did themselves proud.

I dare say Southampton are absolutely sick of the sight of The Hatters this week. What with 'dumping' them out of the Littlewoods Cup, a 7-1 victory by our reserves and a 4-2 victory by our youth team. It must surely have rubbed salt in their wounds.

I enjoyed watching Steve Williams display last Friday night, I think he showed in that game what a class player he can be. His 'touches' and passing of the ball were real quality and if Steve can maintain that form and confidence, I'm sure the club and supporters will see just why he

became the Hatters most expensive purchase.

Mitchell Thomas looked 'class' alongside 'Fozzie' and then Dave Beaumont and I think it would be great to see 'spider' back in our ranks. If Mitchell's not available, then a young left full back called Rufus Brevitt who plays for Doncaster Rovers looks a superb prospect.

Yours faithfully

Geoff Evans

10 Portland Street
Whitwell, Worksop
Notts.

Back-up Scoreboard operator required for Barclays League matches

Are you interested in working closely with the club?
Do you have computer experience?

Are you 18 or over?

Are you prepared to give up some of your free time?

If so ring Wendy Greaves on 0582 411622 for further information.

J. SAPSWORTH LTD

GLAZING REPAIRS - GLASS SUPPLIES
DECORATING SPECIALISTS

92 MARSH ROAD, LUTON, BEDS.

☎ GLAZING & 24 hr EMERGENCY SERVICE 0582 573025
DECORATING 0582 597505

EXECUTIVE MEMBERS

ABB ROBOTICS LTD
ADRIATIC ENTERPRISES LTD
ANACHEM LIMITED
MR W ASHBURNER
BEDFORD COMMERCIAL VEHICLES
BERKELEY ASSOCIATE PRINTERS
BERVALE MEAD INSURANCE
BROKERS LTD
W J BILLINGTON LTD
BLAKEY ENGINEERING CO LTD
BRITISH CAR AUCTIONS
BROAD STREET PRINT
CAMARGUE KITCHENS
CAMBERWELL PLAIN PAPER
COPIERS LTD
CHEF FOODS
COUNTY MOTORS LTD
CRANE & STAPLES SOLICITORS
CHAMBERLAIN WINDOW
FASHIONS
CAPITAL METALWORK LTD
DUPONT (UK) LTD

EVERGREEN SUPPLIES LTD
FILMERGRAPHIC PRESS LIMITED
FENNEMORES SOLICITORS
FLITWICK OIL
F W PEARCE BUILDERS LTD
V G GREEN & SONS LTD
MR D HALES
HANDSCOMBE Financial and
Investment Services
E W HUDSON (HOLDINGS) LTD
IVOR HOLMES LTD
INFORMATION TECHNOLOGY LTD
I S INITIAL CONTRACT
SERVICES LTD
MARK JAMES (SALVAGE) LTD
HANS JURGEN (IMPORTERS) LTD
JSB BUSINESS FORMS
JOHN LAING CONSTRUCTION LTD
J M KEENAN LTD
MR P LAYCOCK
LUTON BATHROOM & TILE CENTRE
MILCUTT ENGINEERING LTD
NEAHURST LIMITED

OPELVALE GROUP
MR S PEARSON
PETERS GRAVES & CO
RAVENMERE LTD
A W REMOVALS LTD
R B T ELECTRICS
REYVEN (SPORTSFIELDS) LTD
RICHARDSON & BOTTOMS LTD
ROGERS/COUNTRY PROPERTIES
ESTATE AGENTS
SHOREY'S TRAVEL
MR & MRS D SHERIDAN
THE KITCHEN CENTRE
W S TYREMASTERS (Div. of West &
Sellick (Tyres) Ltd)
TILDAL INVESTMENTS LTD
VAUXHALL MOTORS LTD
WALLSPAN BEDROOMS
WILTON TRUCK RENTAL
WOODWARD BUILDERS
YARNSFIELD LTD

EXECUTIVE BOX HOLDERS

WILTON TRUCK RENTAL

Team Trimoco
The name that's moving

WHITBREAD

Ribocon

SKF SERVICES
Interior Contracts Ltd

Hunting Gate
4444

Herald
just a friend dropping in

BRITISH CAR AUCTIONS

CONNOLLY HOMES
HOMES TO BE HAPPY IN

Unigate
DAIRIES
Bringing out the best.

Key Consultants

SYNAPSE

TNT

LUDLOW OF LUTON
D. KEECH

T. J. ALDRIDGE
Builders

National Westminster Bank PLC

DBF Crosswinds Ltd
COMPUTER AND BUSINESS STATISTICS

PRUDENTIAL
Property Services

COMMUNICATIONS (U.K.) LTD.

DRG PAPER & BOARD

McCANN HOMES

S & S HOMES

EDS Electronic Data Systems

RYDER INSURANCE CONSULTANTS LTD

EXPOTECHNIK

Hillson Twicken

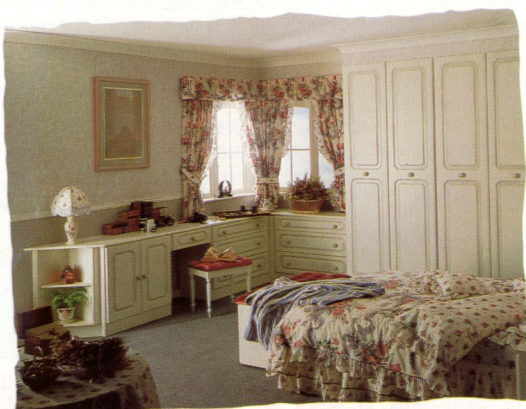
WE'VE ALSO MADE SOME CHANGES TO OUR LINE UP THIS SEASON

Kenilworth Road isn't the only place you can see a new line up this afternoon.

Just down the road in the Arndale Centre, and in our showrooms throughout the U.K., you can see the new additions to our own squad.

The Cameo Collection is making its home debut in what is undoubtedly the most attractive and unbeatable line-up in fitted bedroom furniture in the U.K.

And if that weren't enough you'll find that like Luton Town, we too have proved that you don't need to break the bank to put together a winning combination.



Wallspan

Wallspan Bedrooms Limited,
Head Office: Maulden Road,
Flitwick, Beds MK45 5BW.
Telephone: 0525 716161

SHOWROOMS THROUGHOUT THE U.K.

DRESSING ROOM

with Alec Chamberlain

Goalkeeper Alec Chamberlain was born at March, Cambridgeshire, in June 1984, and began his career with Ipswich Town. He moved on to Colchester where he made 184 appearances before joining Everton. He signed for the Town last summer in a £150,000 transfer, but has since been frustrated in his ambitions for regular first team football by the consistent form of Les Sealey. In today's Dressing Room Talk, he reflects on the ups and downs of his career:



Frustration

"It can be difficult sometimes to fight the frustration of playing in the reserves, but there is only one way to go about it and that is to do your best and hope for a chance. Les is a very experienced First Division goalkeeper and you don't establish yourself as he has without having a lot of talent and ability. He has also steered clear of injury and not lost form so I am just carrying on as best I can."

"Of course, when I came to Luton I hoped to prove myself in the first team. I knew the manager rated me or he would not have gone out and paid so much money for me. The experience with working at Everton with Neville Southall was something special and I thought I had a better chance of getting ahead of Les than Neville."

"It hasn't worked out that way yet though for me. People often talk about Neville and I have to say he was a fantastic goalkeeper to work with. He made me feel quite in awe of him at first. He is so dedicated and has so much ability. Definitely one of the very best in the world in my book."

"A few people have pointed out that Les was unfortunately injured last year and Andy Dibble came in to the team for the Littlewoods Cup final, but I am not thinking like that. I would not want Les to miss out on another big game through injury and would prefer to get my breakthrough a different way. I would still

• **Waiting for a chance:** Alec Chamberlain

love to play at Wembley though of course.

"There are so many good youngsters here though that I would think I have a good chance in the future anyway. They are at least as good, if not better than the youngsters coming through at Everton. We also feel we have the best team in the Football Combination even though we may not be proving it by running away at the top."

"Joining Luton was a good move on the family front for me as I come from Ramsey and my wife is from Ipswich. I grew up only an hour's drive from here, but had never been to the club before I joined. I was a Peterborough fan as a boy and was their mascot twice."

"Incidentally, I played in the same county side as Tim Breacker although we were at different schools. I think he played in midfield then, but I am not sure. Then he was off to Luton before I went to Ipswich. I learned a lot at Colchester when I was there as the manager Mick Walker was a former goalkeeper. I also saw a lot of good cricket which is my favourite other sport."



by BILL TOMLINS

THE TOWN

SOCCKERLINE SERVICE IS A BENEFIT TO THE CLUB

What a tremendous time we had last week. After the well-deserved home win over Everton, it was great to travel down to the Dell and beat Southampton and then sit back and enjoy the football last Friday when we met Caen in Brian Stein's testimonial match.

All credit must go to Ray and the lads for their good performances after a difficult spell of results. It speaks volumes for the character of the club.

Cheerful

Some of our fans may have noticed our Luton Town Soccerline reporter was not his usual cheerful self at the last home game. Brian Swain was happy with the three points against Everton, but frustrated and nigged because his report was not getting through to many supporters.

British Telecom's equipment developed a fault which meant that people who dialled 0898 700 273 from Luton for the latest Kenilworth Road news could not get through.

The line went dead on Friday and, despite pleading to BT for action, was not fixed until Monday

morning. Oddly, callers from most other parts of the country could get through.

The fault cost us money. Weekends are peak periods on the Soccerline service and we as a club receive a percentage of the price supporters pay for their calls. The fault affected all 0898 numbers dialled from Luton, some of which are about rather different games from football.

Brian reported that on one call for repairs, he was told: "We're working on it. We've just had a call from the daughter of the Southend chairman. She rang for a match report and found herself listening to a lady offering to talk about some rather unladylike games..."

Happily, Luton Town's Soccerline is devoted only to football and, if you have not tried it yet, the service is 24 hours a day and is updated at least once daily. And it is our link with supporters so it is not only first, but also reliable and official.

So, make a note of the number: 0898 700 273.

Finally, for full details of the arrangements for our Littlewoods Cup semi-final against West Ham, please turn to page 18.

ON THE LINE



• The latest news: Our Soccerline reporter Brian Swain interviews manager Ray Harford for another updated edition on 0898-700-273.

LINING UP FOR BRIAN'S BENEFIT

• **Old and new:** Old friends like Mitchell Thomas, Kirk Stephens and David Moss joined the Town for Brian Stein's Testimonial Match last week.



• **Among old friends:** Brian Stein is pictured last Friday with David Moss, Mitchell Thomas and Kirk Stephens after his testimonial last week.



• **Collecting his tankard:** Brian receives his commemorative tankard from Cllr. Viv Dunnington on behalf of Luton Borough Council for his two-goal show at Wembley last April.



• **The winning team:** Brian is pictured with our chairman David Evans MP and the President of his French club Caen.

CAPTAIN'S DIARY



STEVE FOSTER

WELCOME TO 'RADAR'

Hello everyone and welcome to Forest, particularly Gary Parker who is making his first return to Kenilworth Road today. 'Parks' left us for Hull City a couple of years ago and is now establishing himself at Forest where he has been scoring a few goals in recent weeks.

Since our last home match we have all been getting to know new defender David Beaumont who had joined us from Dundee United. David has been dubbed 'Radar' by the lads and is settling in well. We all hope he has a long and happy career here.

He looked comfortable last week in Brian Stein's testimonial match and obviously enjoyed himself. That was a very pleasant evening and it was typical of Brian to come back and score with one of his swerving free-kicks.

Dribble

We also enjoyed the night down at Vauxhall on Tuesday this week when we won a Bedfordshire Premier Floodlit Cup semi-final there 4-2. Marvin Johnson scored a tremendous goal with one of his long dribbles and it was another great night for everyone involved.

This afternoon will give us a tough test as Forest are a very good side and play football. But we are confident we can beat anyone on our day and hope you will give us plenty of support again. Enjoy the game.

ROY UNDOES THE TOFFEES

Luton Town 1 EVERTON 0

A superbly-taken fourth-minute goal by Roy Wegerle secured all three valuable points for the Town when they overcame Everton at Kenilworth Road in our last home match.

Wegerle struck when he ran forward to the edge of the penalty area, controlled a flighted through pass by David Preece on his chest and then turned and scored with a left-foot volley which left Welsh international goalkeeper Neville Southall helpless.

The result also meant the Town had completed a notable double over one of the established powers of English football, having won 2-0 on Merseyside earlier in the season. It was not a brilliant afternoon's entertainment, but one of those days when the result mattered more than the performance.

Once they were in front, the Town rarely looked like losing control and David Preece and Ricky Hill controlled midfield with some ease. Everton used the offside trap and a succession of long and hopeful passes to try and fight their way back, but rarely threatened to succeed.

Teams: Luton Town – Sealey, Breacker, Grimes, Preece, Foster, Dreyer, Wilson (R. Johnson 84), Wegerle, Harford, Hill, Black (Dowie 84).
 Everton – Southall, Snodin, Pointon, Ratcliff, Watson, Bracewell, Nevin (Wilson 75), McCall (McDonald 75), Clarke, Cottee, Sheedy.

Referee: Ray Lewis (Gt Bookham, Surrey).

1st Team ACTION



• **Deserved victory:** Roy Wegerle's early strike brought the Town a well-merited win over Everton in our last home match. Our action pictures today show Ashley Grimes, Ricky Hill and Roy Wegerle in action and Wegerle being congratulated for the goal. Pictures by Josh Levy of Apex Photography.

HOT NEWS - HOT MUSIC

on **The Hot FM**

24 HOUR RADIO
THROUGHOUT THE AREA

**Chiltern
Network**

Chiltern South
97.6 FM Stereo 828 AM

Northants 96
96.6 FM Stereo 1557 AM

Chiltern North
96.9 FM Stereo 792 AM

Switch on to Anglia . . .
Top of the League for News and
Sports Coverage



ANGLIA
Television Limited

Bedfordshire News Centre
16 Park Street, Luton. Telephone: (0582) 29666
Resident Reporter: Peter Lugg

BOX OFFICE INFORMATION

LITTLEWOODS CHALLENGE CUP SEMI-FINAL 1ST LEG

WEST HAM UTD v LUTON TOWN

Sunday February 12th 1989 - kick-off 3.00pm

All Ticket Match.

Prices (no reductions) **Seats** £7.50, £8, £9.

Standing £4.50

Tickets for this semi-final tie at Upton Park can only be purchased from Luton Town's Ticket Office by post, credit line, or personal application.

Season Ticket Holders Exclusive Purchase Period.

Wednesday 1st Feb to Saturday 4th Feb inclusive (one ticket per season book).

Members General Sale Monday 6th Feb to Saturday 11th Feb inclusive (one ticket per member).

Ticket Office Opening Hours

Wed-Fri 3rd Feb 9am-7pm

Sat 4th Feb Luton Town v Nottingham Forest
(semi-final tickets will be on sale after the match only 4.45-7.00pm).

Mon-Fri 10th Feb 9am-7pm.

Sat 11th Feb 9am-2pm.

LITTLEWOODS CHALLENGE CUP SEMI-FINAL 2ND LEG

LUTON TOWN v WEST HAM UNITED

Wednesday March 1st 1989 - kick-off 7.45pm

OR

Sunday February 26th - kick-off 3.05pm

(Subject to live TV)

All Ticket Match. Normal League prices.

No Guest Tickets.

No sales on day of match.

Season Ticket Holders Exclusive Purchase Period.

Wednesday 1st Feb to Saturday 4th Feb inclusive (one ticket for season ticket holder - Cup Voucher 23).

Members General Sale

Monday 6th Feb to Saturday 11th Feb inclusive (one ticket per member).

Should there be any remaining unsold tickets guesting will be reviewed on Monday 13th Feb.

POSTAL, PHONE OR PERSONAL APPLICATIONS

By Post: Enclose a cheque, postal order or Access/Visa card number plus membership card number or season ticket voucher No.23 and write to the Ticket Office, Luton Town FC, Kenilworth Road, Luton LU1 1DH. **Season Ticket Holders:** Applications must be received by February 4th with cup voucher 23 to guarantee your reserved seat. **Members - Re: General Sale** Applications start from Monday 6th February. **By Phone:** Call our credit line 0582 30748 quoting your access/visa number, name address and membership card number. **In Person:** At the Ticket Office, Kenilworth Road, Luton, with your membership card, or season ticket book.

MAN IN CHARGE

Jim Ashworth (Luffenham, Leicestershire)

An air traffic controller, Jim is married with two children. He progressed via the Football Combination to the Football League list after starting his career in 1967. He enjoys golf, reading, and watching most sports. He was a linesman for a European Cup tie in 1983 and has been in charge of several other big games. Jim's linesmen today are Mr R. Coaten and Mr J.A. Elwin. The reserve official is Mr A.T. Masson.

Forthcoming Matches at Kenilworth Road

Ovenden Papers Football Combination Tuesday, February 7, 1989 Luton Town v Millwall kick-off 2pm.

Barclays League Division One Saturday, February 18th, 1989 Luton Town v Middlesbrough kick-off 3pm.

South East Counties League Saturday, February 18th 1989 Luton Town v Oxford United kick-off 12.00 noon.

TICKET OFFICE OPENING HOURS

Wed-Fri 3rd Feb 9am-7pm

Sat 4th Feb Luton Town v Nottingham Forest
(Semi-final tickets will be on sale after the match only 4.45pm - 7.00pm)

Mon-Fri 10th Feb 9am-7pm Sat 11th Feb 9am-2pm

Mon-Fri 17th Feb 9am-5pm Sat 18th Feb Luton Town v Middlesbrough subject to FA Cup

Semi-final tickets will be on sale after the match only 4.45pm-7.00pm

Mon-Fri 24th Feb 9am-5pm Sat 25th Feb 9am-12 noon.

LUTON TOWN SUPPORTERS CLUB

Membership Recruitment: Bring along your completed enrolment forms to the Luton Town Souvenir Shop after today's match. Do not forget - there is a special offer for the first 500 members to join and make closer links with the club.

BOBBERS TRAVEL CLUB

WEST HAM v LUTON TOWN

LITTLEWOODS CUP SEMI-FINAL 1ST LEG

We are running coaches to Upton Park and tickets can be obtained from the Luton Town Souvenir Shop at the top of Oak Road after today's game or on Monday and Tuesday. All travellers must be members of Luton Town FC. Tickets £4 (adults) and £3.20 (children and senior citizens).

PLAYER PROFILE

ASHLEY GRIMES

Born in Dublin in August 1957, Ashley will always be recalled by Town fans for his last-minute contribution to the 1988 Littlewoods Cup triumph over Arsenal at Wembley. Ashley, on as a substitute, appeared wide on the right wing where he produced a low cross to the near post with his favourite left-foot.

It seemed an unorthodox pass but Brian Stein anticipated it and swept in to score the winner with only seconds remaining, ensuring both he and Ashley will always be fondly remembered at Kenilworth Road. Ashley, of course, had also been a decisive factor in the semi-final win over Oxford which secured that Wembley appearance, his educated left-foot firing a marvellous free-kick beyond the reach of Alan Judge in the second leg.

A full Republic of Ireland international, Ashley has regained his left-back position this season after a long injury absence.



• **Back to his best:** Ashley Grimes has shaken off his injuries.



ASHLEY GRIMES

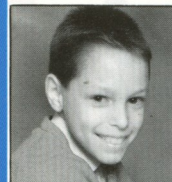
HATTERS IN GEAR



- | | | | |
|-------------------------------------|--------|-------------------------|--------|
| ● ADIDAS football shirts from | £14.00 | ● Wristbands | £1.20 |
| ● ADIDAS football shorts from | £6.00 | ● Headbands | £1.20 |
| ● ADIDAS football socks from | £3.50 | ● Keyrings from | £0.75 |
| ● ADIDAS club tracksuits from | £28.00 | ● Babygrows | £4.99 |
| ● Woollen scarves from | £2.50 | ● Baby bibs | £1.50 |
| ● Club holdalls from | £5.50 | ● Club ties | £6.25 |
| ● Football League Yearbook | £7.95 | ● V Neck sweaters | £14.99 |
| ● Luton Town F.C. coats | £36.00 | ● Leisure shirt | £12.99 |
| ● Luton Town coffee mugs | £1.60 | ● Teddy Bears | £5.00 |
| ● Club pennants | £2.50 | ● Pens | £0.65 |
| ● Caps and ski hats from | £2.30 | | |

**MANY ADDITIONAL ITEMS AVAILABLE FROM OUR SOUVENIR SHOP
AT 125 OAK ROAD, LUTON. Tel (0582) 411622**

MASCOT

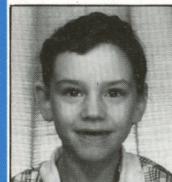


Paul Simmonds

ESCORTS



Jeremy Stone



John Farquharson



Mandy Sebbace



Vicky Spiers

JUNIOR HATTERS!



BY DANNY WILSON

BOOK NOW FOR THE SPECIAL ARSENAL OUTING

This afternoon we extend a warm welcome to Nottingham Forest. It was an outstanding performance against Everton to push us up the League table by two places and the lads will do their best today to improve our position.

I did say that I would let you know about the trip to Arsenal on Saturday February 25th. We are going to take bookings for this trip although it might not be played on this date as we might be playing West Ham in the Littlewoods Cup on Sunday February 26th or alternatively Wednesday March 1st.

If this game is played on an alternative date it will probably be an evening game in which case we will still be going. If you would like to go on this trip, the price is £4.00 for Junior Hatters and £4.50 for parents.

If this game is on February 25th, a packed lunch is recommended as the Junior Hatters will be playing football in the morning with the Junior Gunners, book early to save any disappointment. Book from the Souvenir Shop in Oak Road today.

Today's lucky Junior Hatters membership number is H0188091354. The winning member should contact Bev Tyler in the Souvenir Shop at Oak Road with his or her membership card, for two free tickets to one of our home matches.

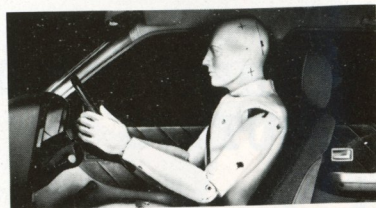
Have a good time and I will see you all at our next home game when our visitors are Middlesrough.



FIRST WITH NEWS - MAGIC WITH MUSIC

24HRS EVERY DAY ON 828kHz AM. AND 97.6mhz FM.

Introducing 5-wheel drive.



As you can see, this is not some new kind of vehicle for negotiating rough terrain.

It is, in fact, Saginaw Tilt Wheel Steering.

A special factory-fitted extra that can alter the way you drive.

The wheel adjusts to five separate positions.

So, from a driver's point of view, it can make life a lot more comfortable.

In turn, making driving far safer.

(Added to which, a unique Saginaw energy-absorbing column comes as standard.)

Changing the angle of the wheel takes no effort whatsoever.

By moving a small lever on the steering column, it can be set to the ideal position.

Tilted down, it's easy to imagine what a fast sports car feels like.

Tilted up, it's like being behind the wheel of a bus.

This last position also provides more leg room, so getting in and out of a car becomes a much simpler exercise.

But it's not only you who will benefit from Saginaw Tilt Wheel Steering.

Anyone who drives your car will too. Because it will make it more adaptable to any driver's individual needs.

Not many extras make a car so flexible. And certainly not for just £88 (plus Car Tax plus VAT).

Saginaw Tilt Wheel Steering is available as an optional extra on most new Vauxhall-Opel cars.*

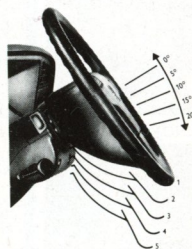
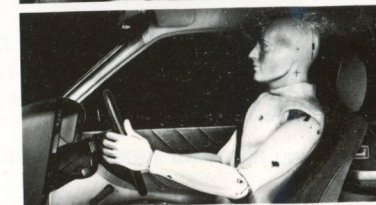
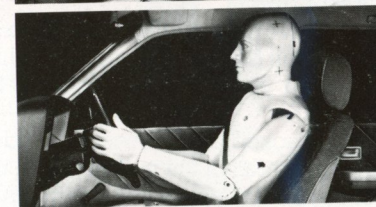
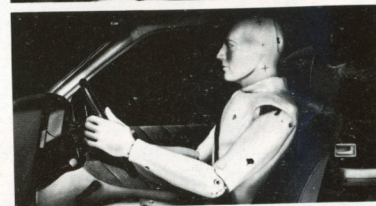
So contact your nearest Vauxhall-Opel dealer for a chat.

He'll be able to tell you more about 5-wheel drive and exactly how it handles.

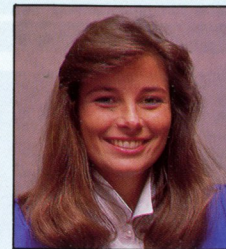


Degrees more comfortable. Degrees safer.

*STANDARD EQUIPMENT ON SOME MODELS



COMMERCIAL COMMENT BY WENDY GREAVES



LUTON AIRPORT'S SPECIAL GUESTS

A warm welcome to our match sponsors this afternoon Luton International Airport. LIA have invited a number of special guests today and these include among others guests from the Intasun Leisure Group, editors and travel writers from the trade papers, managers of the airlines based at Luton and employees of LIA.

We hope they all enjoy a thoroughly entertaining afternoon at Kenilworth Road.

LIA have become a large part of Luton Town and their involvement in the club is a reflection upon the type of businesses which are joining the local business community and helping to keep Luton capable of remaining the thriving and profitable town it is.

Their support has boosted the confidence in the club from throughout the region and proved we are flying in the right direction to attract and cater for large international companies.

Ball Sponsors

Our ball sponsor today is an avid Town fan and an executive member who has supported the club for several years. A warm welcome to David Boniface of JSB Business Forms (Northampton). JSB's support of the club is much appreciated and I hope you enjoy a truly memorable afternoon with three valuable points to celebrate at the end.

All of our Midas club members are reminded the draw for a £500 holiday-for-two is on February 17. Winners to be announced on Chiltern Radio Sports Sound on February 18th.

Today we welcome 1,000 children here as part of the Great Ormond Street Appeal. Thanks for the support of Roy Daniels, Maurice Williams, John Mitchell and Ray Miller. Please give generously to the collection.

Today's MATCH SPONSOR



A GOALDEN OPPORTUNITY TO WISH OUR TEAM EVERY SUCCESS

It's hardly surprising, Luton International is now the region's No 1 holiday and business airport.

After a multi-million pound modernisation programme, LIA has every conceivable facility to ensure that leisure and business travel takes off just inside the terminal building. We are now at the forefront of choice to an astonishing number of frequent air travellers.

What's more, getting to Luton couldn't be easier.

A rapid rail link means

CENTRAL LONDON TO THE TERMINAL BUILDING IN AS LITTLE AS 45 MINUTES.



There are superb coach links serving many parts of the country, and the M1 and M25 leave us only minutes from most of North and Central London and the northern Home Counties.

**LUTON INTERNATIONAL AIRPORT, LUTON LU2 9LY.
TEL: (0582) 405100. TELEX 826409. PRESTEL 20291**



• **Aerial power:** Darren Salton jumps to action against Bristol Rovers in a youth team match.

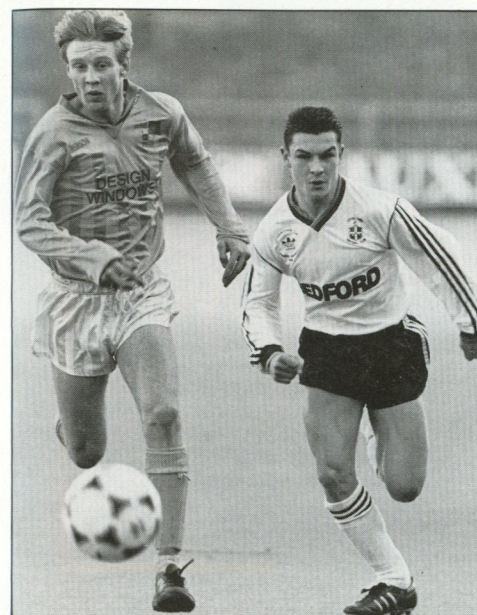
SOUTH EAST COUNTIES LEAGUE DIVISION TWO 1988/89

	P	W	D	L	F	A	Pts
Swindon Town	21	13	4	4	39	26	30
Wimbledon	20	12	2	6	44	30	26
Brentford	19	11	5	3	40	21	27
Luton Town	20	9	7	4	57	34	25
Oxford United	19	11	2	6	26	25	24
Crystal Palace	20	9	4	7	41	24	22
Southampton	18	9	4	5	33	21	22
A.F.C. Bournemouth	19	9	3	7	35	28	21
Colchester United	20	6	4	10	30	34	16
Bristol City	17	3	9	5	20	25	15
Tottenham Hotspur	21	6	3	12	34	48	15
Brighton & Hove Albion	20	4	6	10	23	35	14
Reading	20	5	4	11	33	62	14
Northampton Town	19	4	5	10	35	42	13
Bristol Rovers	20	3	4	13	20	51	10

OVENDEN FOOTBALL COMBINATION 1988/89

	P	W	D	L	F	A	Pts
Tottenham Hotspur	22	15	6	1	56	18	36
Arsenal	19	15	4	0	54	20	34
Luton Town	27	12	10	5	65	38	34
Wimbledon	24	15	3	6	50	25	33
Watford	21	11	7	3	50	32	29
Chelsea	22	11	4	7	41	33	26
Oxford United	22	9	5	8	48	52	23
Norwich City	23	9	4	10	42	42	22
West Ham United	24	7	8	9	37	38	22
Southampton	23	8	6	9	38	43	22
Swindon Town	20	8	4	8	39	38	20
Crystal Palace	21	7	6	8	28	29	20
Brighton & Hove Albion	22	5	10	7	32	41	20
Fulham	21	8	3	10	31	39	19
Millwall	18	6	6	6	34	26	18
Ipswich Town	21	7	4	10	31	42	18
Charlton Athletic	20	4	4	12	33	46	12
Queens Park Rangers	21	3	4	14	19	42	10
Portsmouth	20	3	2	15	18	58	8
Reading	21	2	2	17	20	64	6

(Up to Monday January 30th)

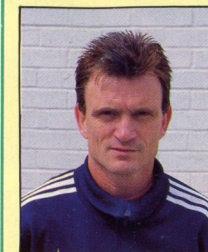


• **Ground approach:** Mark McGonagle.

OVENDEN PAPERS FOOTBALL COMBINATION 1988/89

Date	Opponents	Result	Date	Opponents	Result
1988			1989		
Aug 27	Southampton	3-2	Jan 4	Brighton	2-2
Sept 6	Norwich City	2-3	Jan 7	Crystal Palace	0-0
Sept 10	Swindon T	1-1	Jan 14	Reading	4-1
Sept 17	Watford	2-2	Jan 17	Chelsea	2-2
Sept 24	Oxford United	7-1	Jan 21	Wimbledon	1-3
Oct 1	Arsenal	2-3	Jan 28	Southampton	7-2
Oct 5	Norwich	2-1	Feb 7	Millwall	
Oct 11	Brighton	3-0	Feb 14	Swindon T	
Oct 15	Watford	4-0	Feb 25	West Ham	
Oct 18	Charlton A	1-0	Mar 4	Arsenal	
Oct 22	Wimbledon	0-2	Mar 15	Crystal Palace	
Oct 29	Reading	4-2	Mar 21	Charlton A	
Nov 1	Fulham	0-3	Mar 25	West Ham	
Nov 5	Ipswich Town	2-1	Apr 1	Fulham	
Nov 9	QPR	1-0	Apr 11	Ipswich T	
Nov 12	Chelsea	1-1	Apr 22	Portsmouth	
Nov 15	Portsmouth	7-0	May 13	Tottenham	
Nov 22	Millwall	2-2			
Nov 26	QPR	1-1			
Nov 30	Oxford United	3-3			
Dec 31	Tottenham	1-1			

COACHES' CORNER



YOUTH TEAM ENJOYING LIFE ON THE CREST OF A GOAL WAVE

Our promising young youth team have been in excellent form in 1989 and have now gone unbeaten in their last eight South East Counties League matches and have moved up to fourth place in the table. But for the reserves tremendous run of 12 games without defeat came to an end at Wimbledon on January 21 when they were beaten for the first time since November 1.

The reserves bounced back however by immediately crushing Southampton with seven goals on their last outing on January 28. Pool old Saints seem to have an aversion to meetings with Luton at all levels these days.

For youth team coach John Faulkner, the most pleasing aspect of his team's play has been the number of goal chances the team have created and the number of goals they have scored.

He said: "Over the period of the season we are averaging three goals per game with a total of 70 goals to date. This remains by far the most goals scored in our league by any team.

"It also reflects the confident and positive manner in which the young players are showing up in games and generally in the shaping of their careers."

The reserves were not the only victors over Southampton at the end of January. For in addition to the first team, the youth team triumphed when they won 4-2 on the South Coast on January 28. A hat-trick, including one penalty, from Mark Pembridge, added to one from Ceri Hughes did the trick.

"It was a mature performance in difficult conditions," said John. "We deserved to win. But it could have been much more emphatic. Our attacking play has been really good in the last few weeks and it was again against Southampton and we made a lot of chances."

GREAT SAVES.



At Barclays we have a great range of savings schemes, so however large or small the amount you have to save you're sure to find one that suits you.

We can offer everything from special accounts for young people with just £1 to save, to premium rate savings accounts like Capital Advantage for those with £10,000 or more to invest.

Ask at your local branch for details.

With Barclays on your side you're bound to get a good result.

MEMBER OF MRO

•••YOU'RE
BETTER OFF
TALKING TO
BARCLAYS

PHOTO FILE



• Flashback to the City Ground: We drew 0-0 in Nottingham last October. Our pictures today show Steve Williams and Mick Harford in action during that match.



LUTON TOWN Goal'den Oldies

BILLINGTON TWICE ON MARK AGAINST FOREST ON BOTH SIDES OF THE WAR

Like so many of our current opponents, League clashes with Nottingham Forest did not commence until our promotion to the Second Division in 1937, writes club statistician Roger Wash.

Our first meetings took place over Easter 1938 when Forest narrowly won 1-0 at the City Ground on Good Friday with Ted Vinall and Jock Finlayson scoring for the Town in a 2-2 draw in the return the following Monday.

The following season saw both games played over Christmas with the Town doing the double – winning 4-2 in Nottingham and 1-0 at Kenilworth Road. Hugh Billington was on the scoresheet in the first game and was still there scoring in both fixtures when football was resumed after the War.

The home game played on 29th January 1947 was arranged at such short notice because of the severe winter weather that only 4,209 turned up – the Towns lowest attendance for a Second Division match this century. Short notice also meant the non-production of programmes but the sparse crowd was able to recognise Billington, Allen Driver and Dally Duncan scoring the goals in a 3-2 win.

Bobby Brennan was on the scoresheet in both games as the Town again achieved the double in 1947/48. He also scored in the 4-3 home win the following season as Forest slipped out of the Second Division for a brief period.

On their return goals continued to flow as witnessed by a 3-3 draw at Kenilworth Road on 16th February 1952 with Hugh McJarrow scoring twice on his debut.

Season 1954/55 opened with a 3-0 home win over Forest before a crowd of 19,832 and in the return shortly before Christmas a 5-1 win for the Town at the City Ground put Luton amongst the front runners. The next away game – at Hull on Boxing Day – also saw a big win by 4-0 but there were to be no more victories on opponents soil until the last day of the season and the Town still won promotion!

Forest joined the Town in the top flight two seasons later but it was in 1958/59 that two never to be forgotten clashes between the sides took place.

Both Forest and Luton had fought their way to Wembley for the FA Cup Final and the League fixture at Kenilworth Road on 9th April 1959 was seen as a pointer to the way the game would flow at the Empire Stadium.

The Town put out their full Wembley side whilst Forest rested four players. Luton ran riot winning 5-1 before a crowd of 22,352 with Allan Brown scoring four to send the press corps frantic calculating how many the Town would win by on the big day.

Billy Walker the Forest manager came out with the only sensible quote, "I do not think it will be the same on Cup Final day." He was, of course, quite right – Forest won 2-1.

After the Towns relegation the following season it was not until 1972 that paths crossed again with John Aston's winner at the City Ground early in 1972/73 being particularly memorable.

Season 1973/74 was seen to be the year that the Town would finally win promotion back to Division One. Although they did, eventually, the campaign started off terribly with a 4-0 thrashing at the City Ground with Luton lucky to get nil. Socks were pulled up, a young recruit by the name of Tom Finney drafted into the side, and in an amazing transformation Carlisle were dispatched 6-1 the following week!

In recent seasons the only game to linger on in the memory, apart from Emeka Nwajobi scoring on his debut in the 3-2 defeat here in 1983/84 was the 4-2 win two seasons ago at Kenilworth Road with the Town 3-0 up in the first fifteen minutes. A repeat today would be pleasant!

Our previous encounters with Nottingham Forest

	Home	Away
1937/38	2-2	0-1
1938/39	1-0	4-2
1946/47	3-2	2-4
1947/48	2-1	2-1
1948/49	4-3	0-2
1951/52	3-3	0-2
1952/53	3-0	3-4
1953/54	0-1	1-2
1954/55	3-0	5-1
1957/58	3-1	0-1
1958/59	5-1	1-3
1959/60	1-0	0-2
1972/73	1-0	1-0
1973/74	2-2	0-4
1975/76	1-1	0-0
1976/77	1-1	2-1
1982/83	0-2	1-0
1983/84	2-3	0-1
1984/85	1-2	1-3
1985/86	1-1	0-2
1986/87	4-2	2-2
1987/88	1-1	1-1
1988/89	–	0-0

Summary

	P	W	D	L	F	A
Home	22	11	7	4	44	29
Away	23	6	4	13	26	39
	45	17	11	17	70	68



• John Aston: Always a favourite.

Luton News

LUTON TOWN FOR TOP SOCCER LUTON NEWS FOR TOP COVERAGE

For the best match reports, and all the latest news and views from Kenilworth Road, get the
LUTON NEWS and DUNSTABLE GAZETTE

THURSDAYS 14p

INTRODUCING...

NOTTINGHAM FOREST

Today we welcome a Nottingham Forest side currently looking ready to make a challenge for further honours to add to the substantial list that they won in the late seventies *writes Geoff Allman*. They come here on the crest of a wave after winning nine league and cup games in a row.

It was just two years after the formation of the Football Association in 1863 that Nottingham Forest came into existence in 1865. Playing in red shirts right from the start, Forest were pioneers in several different directions. Their cricketer-footballer Sam Widdowson was responsible both for the introduction of shin pads and of the 2-3-5 formation that survived from the 1870's to the 1960's. A few years later Forest were one of the pioneers of early primitive floodlights and then in 1878 a Forest club referee used a whistle for the first time.

Forest first entered the English Cup (as the FA Cup was at first known) in the same year and in 1884/5 they participated in the only semi-final of the competition ever to be played in Scotland when they lost to Queens Park in a replay. They became founder-members of the Football Alliance in 1889, topped the table in its third season and were elected to the First

Division - of the Football League in 1892, the year when the latter was extended to two Divisions.

In 1898 they won the English Cup for the first time, beating neighbours Derby 3-1 in the final at Crystal Palace.

Soon afterwards Grenville Morris, one of Forest's leading players of all time, began a career which was to bring him 217 goals in 457 games at inside left where he combined skill on the ball with shooting power. He experienced relegation to Division Two in 1906 and promotion a year later. He was injured for most of the 1910/11 season at the end of which Forest were relegated and he had retired by the time his side were applying for re-election to Division Two in 1914 at a time when there were still only two divisions.

Forest kept going during the First World War and were Midland Section Champions in 1915/16, then in 1919 they won the Victory Shield that was competed for by winners of different sections of the Wartime League. 1922 saw them topping Division Two with former Aston Villa and England man Sam Hardy in goal, but they were relegated three years later in the season of Sam's retirement. They then had a long



Back Row (left to right): Brian Laws, Gary Fleming, Garry Parker, Stephen Chettle, Darren Wassall, Brian Rice, Stephen Hodge. Middle Row: Liam O'Kane (Coach), Tommy Gaynor, Terry Sutton, Stephen Sutton, Hans Segers, Colin Foster, Neil Webb, Brian Clough (Manager). Front Row: Nigel Clough, Lee Glover, Des Walker, Stuart Pearce (Captain), Franz Carr, Gary Crosby.

unbroken spell in Division Two, two of their stars of the thirties being midfielder Tommy Graham and striker Tom Peacock.

Like many other sides Forest featured numerous guest players during the war years without actually winning anything. Billy Walker, who had been appointed manager in 1939, was with them for the next 21 years. There were many ups and downs during this period including relegation to Division Three (South) in 1949 and promotion in 1951 under the captaincy of our former defender Horace Gager. 1957 saw them regaining their First Division place and Billy Walker's managerial career reached a fitting climax with their FA Cup final win over us in 1959.

1967 saw them runners-up to Manchester United just a year after narrowly avoiding relegation, Johnny Carey being their manager at this stage. They lost their First Division place in 1972, but then came Brian Clough early in 1975 and the most successful spell in their history with promotion in 1977, the Football League Championship and the League Cup in 1978, the League Cup again and the European Cup in 1979 and the European Cup again in 1980.

Since then the team has been completely refurbished without at anytime putting their First Division place at risk and in the last seven seasons they have finished respectively 5th, 3rd, 9th, 8th, 8th and 3rd. They were in the top six throughout last season and lost only twice at home (to Arsenal and Newcastle) all season. Both their games against us were played in late season and were drawn. They lost narrowly to Liverpool in the FA Cup semi-final.

"A fine recovery after a moderate start to the season"

They began this season with three successive home draws, one of them against us and while they have won only three home games they have won five away games up to the time of writing. In recent weeks they have beaten Ipswich in the FA Cup, QPR in the Littlewoods Cup, Ipswich in the Simod Cup and have won First Division games at Sheffield Wednesday, Chelsea and Tottenham.

Leading scorer so far is **Nigel Clough**, who is well on the way to beating last season's 22-goal tally while former Arsenal and Sheffield Wednesday man **Lee Chapman** recently netted four times against QPR in the Littlewoods Cup. **Steve Hodge** in his second spell with them is also scoring regularly from midfield where he links up with England man **Neil Webb** former Lincoln man **Gary Crosby** and that exciting winger **Franz Carr**. Our former player **Gary Parker**, who arrived via Hull, and home-grown **Terry Wilson** may also be in midfield or defensive roles while **Steve Chettle**, **Des Walker** and **Jim Fleming** are home-grown defenders seeking places alongside this season's new signing **Brian Laws** and England man **Stuart Pearce**, formerly with **Coventry**. In goal **Steve Sutton** has made the position his own again after several challenges over the years and others who may come into the reckoning include local-born striker **Phil Starbuck** and **Tommy Gaynor**.

Follow the Hatters ... on SPORTSOUND
Saturdays 2pm - 6pm
with John Smith

BB RADIO BEDFORDSHIRE



Weekdays - Sports News at
6.35/7.35/8.35 am
12.45/5.20/6.20 pm

AM: 630 kHz
FM/VHF: 95.5 MHz
COUNTYWIDE

(AM Bedford: 1161 kHz
FM/VHF Luton: 103.8 MHz)

FOR THE COMPLETE BUILDING SERVICE AND HOME IMPROVEMENTS

T. J. ALDRIDGE
Builders

302 Selbourne Road, Luton, Beds LU4 8NU.
Telephone: 505412-505413

EXTENSION SPECIALISTS

ESTIMATES FREE

B. DOHERTY
SKIPHIRE

34 MOUNT PLEASANT ROAD
LUTON
Telephone: 574633 & 574799

FIRST TEAM

UPDATE

1988-89 SEASON

BARCLAYS FOOTBALL LEAGUE DIVISION ONE

1988-89

HOME										AWAY									
P	W	D	L	F	A	P	W	D	L	F	A	P	W	D	L	F	A	P	A
21	5	3	1	17	9	Arsenal	8	2	2	23	13	44	8	2	2	23	13	44	
22	4	6	2	16	14	Norwich City	7	2	1	17	10	41	7	2	1	17	10	41	
22	6	2	3	18	10	Coventry	4	4	3	13	12	36	4	4	3	13	12	36	
22	4	5	2	12	7	Liverpool	5	3	3	16	11	35	5	3	3	16	11	35	
22	3	5	2	13	10	Nottingham Forest	5	5	2	18	14	34	5	5	2	18	14	34	
22	6	4	1	19	7	Manchester United	2	5	4	12	12	33	2	5	4	12	12	33	
21	7	1	2	19	10	Millwall	2	5	4	13	17	33	2	5	4	13	17	33	
21	4	2	6	12	11	Derby	5	3	1	11	5	32	5	3	1	11	5	32	
21	5	3	2	18	11	Everton	3	3	5	8	12	30	3	3	5	8	12	30	
22	6	3	2	17	12	Middlesbrough	2	2	7	12	22	29	2	2	7	12	22	29	
21	5	2	4	13	13	Wimbledon	3	2	5	12	16	28	3	2	5	12	16	28	
22	4	4	4	20	19	Tottenham Hotspur	2	4	4	13	15	26	2	4	4	13	15	26	
22	4	5	1	16	8	LUTON TOWN	2	3	7	8	18	26	2	3	7	8	18	26	
22	5	3	3	17	14	Aston Villa	1	5	5	14	22	26	1	5	5	14	22	26	
22	4	4	4	20	19	Southampton	2	4	4	14	23	26	2	4	4	14	23	26	
22	4	2	4	11	8	Queens Park Rangers	2	4	6	12	14	24	2	4	6	12	14	24	
22	2	5	5	15	20	Charlton Athletic	3	3	4	9	12	23	3	3	4	9	12	23	
21	3	3	4	10	14	Sheffield Wednesday	2	5	4	8	15	23	2	5	4	8	15	23	
21	3	3	7	11	22	West Ham United	3	2	6	8	17	17	3	2	6	8	17	17	
22	2	3	6	10	16	Newcastle United	2	2	7	7	24	17	2	2	7	7	24	17	

APPEARANCES AND GOALSCORERS (1988/89)

	League		Littlewoods Cup		FA Cup	
	Aps	Gl	Aps	Gl	Aps	Gl
Ian Allinson	1(3)	-	-	-	-	-
Kingsley Black	20	8	6	-	1	1
Tim Breacker	3(2)	-	2(2)	-	-	-
Alec Chamberlain	-	-	-	-	-	-
Gary Cobb	-	-	-	-	-	-
Mal Donaghy	6	-	2	-	-	-
Iain Dowie	1(1)	-	1	-	-	-
John Dreyer	9	-	5	-	-	-
Steve Foster	20	1	6	-	1	-
Ashley Grimes	5	-	2	-	-	-
Mick Harford	18	5	4	-	1	-
Richard Harvey	8	-	1	-	1	-
Ricky Hill	17	2	5(1)	1	1	-
Julian James	1	-	1	-	(1)	-
Marvin Johnson	15	-	2	-	1	-
Rob Johnson	19(2)	-	3	1	1	-
Darron McDonough	1(1)	-	-	-	-	-
David Oldfield	15(4)	1	4(1)	2	(1)	-
David Preece	12	-	3	-	1	-
Les Sealey	22	-	6	-	1	-
Roy Wegerle	15(4)	7	4	2	1	-
Steve Williams	10	-	3	-	-	-
Danny Wilson	22	3	6	1	1	1

Luton Town F-A Att Pos 1

Aug 27	Sheffield Wednesday	0-1	-	-	Sealey
Sept 3	Wimbledon	2-2†	8067	12	Sealey
Sept 10	Southampton	1-2	13,214	16	Sealey
Sept 17	Manchester United	0-2	11,010	18	Sealey
Sept 24	Everton	2-0	26,170	15	Sealey
Sept 27	Burnley (LC2)	1-1	6,282	15	Sealey
Oct 1	Nottingham Forest	0-0	15,340	17	Sealey
Oct 8	Liverpool	1-0	12,117	13	Sealey
Oct 11	Burnley (LC2)	1-0	14,031	13	Sealey
Oct 22	Middlesbrough	1-2	17,749	16	Sealey
Oct 25	Arsenal	1-1	10,548	16	Sealey
Oct 29	Queens Park Rangers	0-0	8,453	16	Sealey
Nov 2	Leeds United (LC3)	2-0	19,447	16	Sealey
Nov 5	Millwall	1-3	12,511	16	Sealey
Nov 12	Coventry City	0-1	12,631	16	Sealey
Nov 19	West Ham United	4-1	9,308	16	Sealey
Nov 26	Norwich City	2-2	13,541	15	Sealey
Nov 29	Manchester City (LC4)	3-1	10,778	15	Sealey
Dec 3	Newcastle United	0-0	8,338	16	Sealey
Dec 10	Derby County	1-0	15,228	15	Sealey
Dec 17	Aston Villa	1-1	8,785	16	Sealey
Dec 26	Tottenham Hotspur (11.30 am)	0-0	27,337	16	Sealey
Dec 31	Wimbledon	0-4	4,899	16	Sealey
Jan 2	Southampton (3 pm)	6-1	8,637	15	Sealey
Jan 7	Millwall (FAC3)	2-3	12,504	15	Sealey
Jan 10	Crystal Palace (S3)	1-4	5,842	15	Chamberlain
Jan 14	Charlton Athletic	0-3	5,212	16	Sealey
Jan 18	Southampton (LC5)	1-1	11,785	16	Sealey
Jan 21	Everton	1-0	9,013	13	Sealey
Jan 25	Southampton (LCSR)	2-1	10,250	13	Sealey
Feb 4	Nottingham Forest				
Feb 12	West Ham (LCSF)				
Feb 18	Middlesbrough (FAC5)				
Feb 25	Arsenal				
Feb 26	West Ham (LCSF-prov.)				
Mar 4	Queens Park Rangers				
Mar 11	Millwall				
Mar 18	Sheffield Wednesday (FAC6)				
Mar 25	Manchester United				
Mar 27	Tottenham Hotspur				
Apr 1	Aston Villa				
Apr 8	Charlton Athletic				
Apr 15	Coventry City (FAC5/f)				
Apr 22	Newcastle United				
Apr 29	Derby County				
May 6	West Ham United				
May 13	Norwich City				
May 14	F A Cup Final				
To be arranged Liverpool (A) & QPR (A)					

© The Football League FAC = F.A. Cup () indicates player substituted

2 3 4 5 6 7 8 9 10 11 12

Breacker	Dreyer	Williams	Foster	Donaghy	Wilson	(Wegerle)	Harford	Oldfield	Black	RJ/[IA]
R. Johnson	Grimes	Williams	Foster	Donaghy	Wilson	Preece	Harford	Oldfield	Black†	JD/RW
R. Johnson	Grimes	Williams	Foster†	Donaghy	Wilson	Oldfield	Harford	Oldfield	Black	TB/[RW]
R. Johnson	Dreyer	Williams	Foster	M. Johnson	Wilson	(Oldfield)	Harford	Hill	Black	[RW]/TB
R. Johnson	Dreyer	Williams	Foster	Donaghy	Wilson	Oldfield†	Harford	Hill	Black†	TB/IA
(R. Johnson†)	Dreyer	Williams	Foster	Donaghy	Wilson	Oldfield	Harford	Hill	Black	[TB]/IA
R. Johnson	Dreyer	Williams	Foster	Donaghy	Wilson	Oldfield	(Harford)	Hill	Black	[IA]/TB
R. Johnson	Dreyer	Williams	Foster	Donaghy	Wilson	(Oldfield)	Harford†	Hill	Black	[RW]/TB
(R. Johnson)	Dreyer	Williams	Foster	Donaghy	Wilson	Oldfield	Harford	Hill†	Black	[TB]/IA
(R. Johnson)	Dreyer	(McDonough)	Foster	M. Johnson	Wilson†	Oldfield	Harford	Hill	Black	[TB]/[RW]
R. Johnson	Breacker	(McDonough)	Foster	M. Johnson	Wilson	Wegerle	Harford	Hill	Black†	[DO]/IA
R. Johnson	Dreyer	Williams	Foster	M. Johnson	Wilson	(Alinson)	Wegerle	Hill	Black	[DO]/RH
J. James	Dreyer	Williams	Foster	M. Johnson	Wilson†	Oldfield†	Wegerle	Hill	Black	IA/AG
(J. James)	Dreyer	Williams	Foster	M. Johnson	Wilson†	Wegerle	Oldfield	Hill	Black	[RJ]/AG
R. Johnson	Grimes	(Williams)	Foster	M. Johnson	Wilson	Wegerle	Harford	Hill	Black	[DO]/JJ
R. Johnson	Grimes	Preece	Foster	M. Johnson	Wilson†	Wegerle†	Harford	Oldfield	Black†	RH/IS
R. Johnson	Harvey	Preece	Foster	M. Johnson	Wilson	Wegerle†	Harford	Oldfield	Black	JD/IA
R. Johnson	Harvey	Preece	Foster	M. Johnson	Wilson	Wegerle†	(Harford)	Oldfield†	Black	[RH]/JD
R. Johnson	Harvey	Preece	Foster	M. Johnson	Wilson	Wegerle	(Oldfield)	Hill	Black	[IA]/JJ
R. Johnson	Harvey	Preece	Foster	M. Johnson	Wilson	(Wegerle)	Harford†	Hill	Black	[DO]/JD
R. Johnson	Harvey	Preece	Foster	M. Johnson	Wilson	Wegerle†	Harford	Hill	Black	DO/JD
R. Johnson	Harvey	Preece	Foster	M. Johnson	Wilson	Wegerle	Harford	Hill	Oldfield	KB/JD
R. Johnson	Harvey	Preece	Foster	M. Johnson	Wilson	Wegerle	Harford	Hill	Oldfield	TB/KB
R. Johnson	Harvey	Preece	Foster	M. Johnson	Wilson	Wegerle†	Harford†	Hill†	Black†	TB/ID
R. Johnson	Harvey	Preece	Foster	M. Johnson	Wilson†	Wegerle	Harford	Hill	(Black)†	[DO]/JJ
Breacker	Dreyer	Preece	James	M. Johnson	(Williams)	Dowie†	Harford	Hill	Oldfield	[RW]/RH
R. Johnson	(Harvey)	Preece	Foster	M. Johnson	Wilson	Wegerle	(Oldfield)	Hill	Black	[TB]/ID
Breacker	Grimes	Preece	Foster	Dreyer	Wilson	Wegerle	Dowie	Hill	Black	RJ/DO
Breacker	Grimes	Preece	Foster	Dreyer	(Wilson)	Wegerle†	Harford	Hill	(Black)	[ID]/RJ
Breacker	Grimes	Preece	Foster	Dreyer	Wilson	Wegerle	(Harford)†	Hill†	Black	[DO]/RJ



HELPING THE GAME

The Football Trust receives £9 million annually from the Seating the Bar competition run by Littlewoods, Venns and Jettis and spends it all on projects which benefit football throughout the United Kingdom.

Since 1979 it has been committed to the development of the game at every level and its broad and varying initiatives have ranged from essential safety work at Tottenham to social work at Twickenham, refurbishment at Wembley to repairs at Welling closed circuit television at all League clubs to community facilities at Oldham Athletic, transport improvements at Sheffield Wednesday to storm damage in the South East of England, from placing costs at Hull City to an artificial pitch at Hyde United.

1988-89 will see The Football Trust increase its commitment by investing further sums in closed circuit television, transport facilities for supporters and projects to bring Football League clubs closer to their local community.

CALL THE LUTON TOWN SOCCERLINE ON

0898 700 273

all the latest news and views from Luton Town

SAFETY FIRST

Football grounds in England and Wales have reached their highest ever level of safety thanks to the £23.671.425 invested by the Football Grounds Improvement Trust since 1975.

Almost every League club has been assisted with essential safety work and further substantial sums have been spent to enable them to improve facilities in the past year alone FGIT grants to Football League clubs totalled:

Safety improvements £ 254,723 770/561

In addition to its safety programme, FGIT has also allocated £1.5 million to build or improve family and disabled facilities at League grounds during 1988.

WARNING

At the beginning of the season more than 110 League grounds in England, Wales and Scotland will be equipped with CLOSED CIRCUIT TELEVISION which has been funded by The Football Trust.

It is there to increase crowd safety and to help the police. Recording facilities enable him and photographs to be taken of disorder which may subsequently be used in a court of law.

CLOSED CIRCUIT TELEVISION

Abacus Press

Interplan House, North Bridge Road, Berkhamsted, Herts HP4 1ET. Tel: (0442) 874391 Fax: 874873

Voucher No. 14

Probably the world's most advanced and researched sportswear

VAUXHALL TEAM CHECK.

Luton Town 2

- 1 Les Sealey
- 2 Tim Breacker
- 3 Ashley Grimes
- 4 David Preece
- 5 Steve Foster
- 6 John Dreyer
- 7 Danny Wilson
- 8 Roy Wegerle
- 9 Mick Harford
- 10 Ricky Hill
- 11 Kingsley Black
- Subs

Nottingham Forest 3


- 1 Steve Sutton
- 2 Brian Laws
- 3 Stuart Pearce
- 4 Steve Chettle
- 5 Terry Wilson
- 6 Steve Hodge
- 7 Franz Carr
- 8 Neil Webb
- 9 Nigel Clough
- 10 Lee Chapman
- 11 Gary Parker
- Subs

Referee: J. ASHWORTH (Luffenham, Leics.) Linesmen: R. COATEN (Yellow Flag) J.A. ELWIN (Red Trim)

GREAT END TO END STUFF.



 **VAUXHALL. ONCE DRIVEN, FOREVER SMITTEN.**

 VAUXHALL IS BACKED BY THE WORLDWIDE RESOURCES OF GENERAL MOTORS. CAR SHOWN NOVA GTE.

Designed and printed by Abacus Press, Berkhamsted, Herts.