

OFFICIAL PROGRAMME £1.00

Luton v Chelsea

TODAY FOOTBALL LEAGUE DIVISION ONE



Saturday, January 3rd, 1987 Kick-off 3.00 p.m

LUTON TOWN

Today's match is sponsored by: Chamberlain Curtains and V.G. Green & Sons.

HORNETS ON FORM FOR XMAS



• **Our first home defeat:** So close and yet so far – Mike Newell, Mal Donaghy and Mark Stein push forward against the Hornets.

INSIDE TODAY

Moore About Football	p.5
Mailbag – your letters	p.6
Girl Talk	p.9
1st team action	p.10-11
Views from the Bench	p.12
Club News	p.13
Around the Town	p.14
Captain's Diary	p.15
Star Portrait	p.16-17
Club Comment	p.18
Reserve and Youth	p.21
Introducing our visitors	p.22-23
Junior Hatters	p.24
Views from the Media	p.27
Goal'den Oldies	p.28-29
Update	p.30-31
Teamcheck	p.32

Edited by: Robert Alexander
Pictures by: Sportswide Photography

WHA

Established 1950

**W.H. ALLSOP & SONS
(Builders) LTD**

- BUILDING SERVICES
- WINDOWS • ROOFING

153 New Town Street, Luton LU1 5BR.
Telephone: (0582) 458000



Falcon
Holidays

14 seasons of top class competition and we're still top of the holiday league! Try a Falcon Holiday this year and find out why we're unbeatable.

Tel: 01-221 6298

33 Notting Hill Gate London W11 3JQ

REPLAY

EVERYTHING YOU LIKE HERE.



PLENTY OF WHAT YOU NEED HERE.



No-one can deny the huge success of the Astra Van.

Now the new Astramax can only add to the popularity of the range, while adding to the discomfort of competitors (but certainly not of drivers).

The Astra Van is well-known for the best 'office' set-up and for the best handling and performance in its class. Same difference for Astramax.

Drivers can take comfort, too, from the Astramax (and Astra Van) being equipped with a proper bulkhead. Unlike some other vans.

The slippery smooth shape is more than a modern front for business. The Cd factor is a low 0.34.

While at the business-end, twin rear doors open to a 90° stop. Or a full 180°; handy for loading bays. And for taking on a choice of 365 or 560 kg payloads in the huge 82 cu. ft. load-space.

For even more load-space, optional with the Astramax, is an extended load-deck in place of the passenger seat.

On the small side, fuel consumption and all the running costs. Whatever your choice from three petrol engines or a diesel, with 4-speed, 5-speed or automatic gearboxes (according to engine).

To end with the finish, the corrosion-protection and paint process is the most-up-to-date in Europe.

As for the Astramax's price, it's attractive enough to save you the bother of shopping around.

BEDFORD

Bedford Commercial Vehicles, Division of General Motors Overseas Commercial Vehicle Corporation,
P.O. Box No. 3, Luton LU2 0SY.

MOORE ABOUT FOOTBALL



Welcome to Chelsea for our first home match of 1987. I hope they enjoy better fortunes in this New Year than they have so far in the current season – notwithstanding that I expect us to take three points off them today. Welcome too to all our own supporters. I hope you have enjoyed a happy and peaceful festive season and will enjoy a good match here today and many more throughout 1987.

Unfortunately, owing to the holidays and the printer's deadlines these notes have been prepared before we went into our holiday programme and I am therefore unable to comment on our performances or our results. Even worse, I am not able to look into a crystal ball and see if our injury situation appears to be improving or not. However, I have had a chance of drawing up a timetable of our own activities over the so-called 'holiday' period and I thought it would give you an insight into the professional footballer's life if I revealed a few little facts today.

No holiday for the players

For example, our first team players faced a programme of four games in a nine-day period which covered the holidays from Boxing Day right through to the New Year and today's fixture against Chelsea. In that spell, they had two days off. In fact, going further back to Christmas Eve, they have had only two days off in the last 11 – and, I sincerely hope and believe, none of them have over-indulged in the festive food and drink. They trained on Christmas Day and then went away for an overnight stop at an hotel in preparation for the Boxing Day match against Watford. They were away again for the visit to Nottingham and then for the match at Coventry. And then again for today.

When I consider I am now a manager I realise I am lucky to have a bit more time with my family, even if I cannot really turn my mind off football at all at this the most busy and worrying time of the year. In truth, as a Scot, I am a bit more interested in the New Year than Christmas. But all my family are English and I have had to conform over the years. In my 21 years down here since I first came to Luton, I can remember celebrating the New Year only twice – and both in more recent times when I have been a coach and not a player. So, today, spare a thought for the players on both sides. Enjoy the game.



LUTON TOWN

CHAIRMAN

David Evans

DIRECTORS

A. Aleyan, T.W. Bailey,
E.S. Pearson, R.J. Smith
J.R. Smith

CHIEF EXECUTIVE

John Smith

MANAGER

John Moore

GENERAL SECRETARY

Bill Tomlins

PRESIDENT

J.A.C. Bain

HONORARY LIFE MEMBERS

J. Richardson
T. Hodgson

VICE PRESIDENTS

R.L. Banks
A.G. Berry FCCA
C. Bygrave, C.J. Evans
B. Cole, E. Fountain
D.W. Graves FCA
C. Holloway, I.E. Holmes
R. Larkinson
R. Safrenek
R. Unwin, E. Waller

HONOURS

FA CUP FINALISTS – 1958-59
CHAMPIONS – DIVISION 3(S) 1936-37
RUNNERS-UP – DIVISION 2 1954-55
CHAMPIONS – DIVISION 4 1967-68
RUNNERS-UP – DIVISION 3 1969-70
RUNNERS-UP – DIVISION 2 1973-74
CHAMPIONS – DIVISION 2 1981-82



Mailbag

Write to The Editor, Luton Town F.C.,
Kenilworth Road, Luton by Tuesday a.m.

Brummies' backing

Dear Sir,

Although I live in Birmingham I travel down to watch Luton as much as possible.

I thought you might like to know that the people I come into contact with in Birmingham, and who know of my interest in Luton, are 100 per cent behind the club's ban on away fans, and were very saddened and surprised that Luton were forced out of the Littlewoods Cup.

I watched Mr Evans on Football Focus in his discussion with the Man City chairman Mr Swales. I could only explain Mr Swales' attitude and action in not attending the home game against his club as someone that was either holding a grudge against Luton or of someone who buries his head in the sand and refuses to accept change.

I saw the game against Arsenal with my father and it was a pleasure not to have to worry about one's safety.

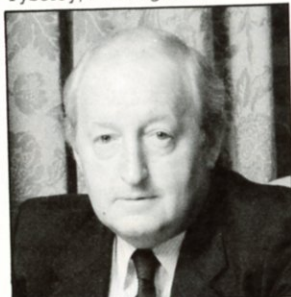
I have in my possession a Luton Town v Leeds Utd programme, FA Cup 3rd Round in the 1959 season, it is in very good condition and I would like to know if anybody could tell

me its value or if they would be interested in adding it to their collection.

Yours sincerely

Mike Livingston

104 Lyncroft Road,
Tyseley, Birmingham



•David Evans: backing
Programmes for sale

Dear Sir,

I have your club's programmes for sale and programmes from every other club in the League.

I would be grateful if you could print this information in your programme for your supporters.

Anyone enquiring will receive a free brochure.

Thanking you in anticipation.

Yours faithfully

Mark Sconce

26 Elworthy Avenue, Halewood
Village, Liverpool L26 7AA

Splendid Stand

Dear Sir,

I want to congratulate you and Luton Town on the splendid stand you are making against soccer hooligans, by banning away fans. It is time the F.A. got their fingers out, and became as realistic as you are, or a grand game will die on its feet.

I think your idea could be carried a stage farther, by opening your doors, when at home to the TV on condition that the broadcast is only transmitted to the area that the away club comes from.

This, if applied to all clubs would ensure better behaved and more fruitful home attendances, while at the same time denying away fans the chance to riot, and by being beamed into their TV sets additionally help to keep them at home.

The attendances at home games would quickly increase and family football would become the order of the day.

May I wish you "Good Luck".

Yours sincerely

Terence Hiscock

2 Dudley Ave, Hordle, Hants



FIRST WITH NEWS - MAGIC WITH MUSIC
24HRS EVERY DAY ON 828kHz AM. AND 97.6mhz FM.

EXECUTIVE MEMBERS

ANACHEM LIMITED
MR W ASHBURNER
ADRIATIC ENTERPRISES LTD
BEDFORD COMMERCIAL VEHICLES
BERKELEY ASSOCIATE PRINTERS
BERVALE MEAD INSURANCE BROKERS LTD
W J BILLINGTON LTD
BLAKEY ENGINEERING CO LTD
BLUE ARROW PLC
BRENGREEN HOLDINGS PLC
BROAD STREET PRINT
CAMARGUE KITCHENS
CAMBERWELL PLAIN PAPER COPIERS LTD
COUNTY MOTORS LTD
CRANE & STAPLES SOLICITORS
CHAMBERLAIN WINDOW FASHIONS
CAPITAL METALWORK LTD
DUPONT (UK) LTD
EVERGREEN SUPPLIES LTD
FILMERGRAPHIC PRESS LIMITED
FENNEMORES SOLICITORS
F W PEARCE BUILDERS LTD
MR A FARRELL
V G GREEN & SONS LTD
BRIAN E HANDSCOMBE Life & Pensions Brokers
E W HUDSON (HOLDINGS) LTD
IVOR HOLMES LTD
INFORMATION TECHNOLOGY LTD
MARK JAMES (SALVAGE) LTD
HANS JURGEN (IMPORTERS) LTD
JSB BUSINESS FORMS

JOHN LAING CONSTRUCTION LTD
J M KEENAN LTD
RICHARD C LARKINSON (CAMBRIDGE) LTD
MR P LAYCOCK
LUTON BATHROOM & TILE CENTRE
LONDON PROVINCIAL CONSTRUCTION LTD
MILCUTT ENGINEERING LTD
NEAHURST LIMITED
OPELVALE GROUP
F OGGESEBY (HARPENDEN) LTD
MR & MRS S PEARSON
PRIORY FARM FOODS
PETERS GRAVES & CO
PEACH HOMES LTD
DAVID RAND & CO LTD
REYVEN (SPORTSFIELDS) LTD
RICHARDSON & BOTTOMS LTD
ROGERS RESIDENTIAL SALES
RAVENMERE LTD
SHOREY'S TRAVEL
MR & MRS D SHERIDAN
STANBAR PRINT
SUNGLINT LIMITED
W S TYREMASTERS (Div. of West & Sellick (Tyres) Ltd)
TILDAE INVESTMENTS LTD
R W UNWIN
VAUXHALL MOTORS LTD
V S ENGINEERING LTD
WALLSPAN BEDROOMS
WILTON TRUCK RENTAL
WOODWARD BUILDERS
YARNSFIELD LTD

EXECUTIVE BOX HOLDERS





YOUR BEDROOM AND OUR FURNITURE

A Great Team

Wallspan

Showrooms throughout the UK.

Wallspan Bedrooms Industrial Estate Flitwick Beds. Tel: (0525) 716161



GIRL TALK



... and a Happy New Year!

Well, it is over at last and I must admit I feel it has all been well worthwhile – the Christmas and New Year programme of matches and hectic preparations, that is! As the club's marketing executive, I have been as involved as anyone behind the scenes in the scramble to get ready. It is like doing three weeks' work in one for us and at the same time everyone else seems to be closing down early for an eternity of festive celebrations. But, in spite of everything it is very enjoyable!

Girls always do have a hectic time, don't they, at this time of the year? While men generally expect to be looked after nicely, cooked for and flattered with new presents, we are busy slaving away in the kitchens or doing the shopping! In my case, it has been difficult to find time to do anything other than help get ready for the matches – booking advertising, sponsors and executive suites.

I try not to complain too much. After all, I did sneak part of a day off before Christmas to do my own shopping (I did not, of course, get a weekend off – we were in on both Saturday 13th and Sunday 14th December). And I did feel a really warm glow on

Boxing Day when we played Watford. There is always something memorable about the family atmosphere on Boxing Day home matches. I love it. It makes it all really worth the hard work behind the scenes.

Hectic but fun

They are the sort of experiences that make it seem rewarding in the end. It is hectic but fun though I did get a bit tired and run down. But, like the busy mothers and housewives rushing around to prepare for their own big family Christmas, I felt it was special to be involved in a family event as big and as happy as our own Luton Town one.

I did not get much time to myself. But then who does over Christmas? It is one of the most wearing periods in the year, isn't it? And I bet, if you ask her, Gale Waller is glad to have her load lightened a little this week with someone else making a contribution to her Girl Talk column. We girls, as you all know, have to stick together. Happy New Year girls! Enjoy the match.

Wendy Greaves

Anyone wanting to contribute to Girl Talk, please write to: The Editor, Luton Town F.C., Dunstable Road, Luton, Beds.

Luton News



Best reports; best pictures

THURSDAYS 14p

1986 – A GOOD YEAR

Our first team action pictures today pay tribute to the consistency and hard work our first team have shown in the last 12 months in establishing the team in the top group of the First Division.

Captain Steve Foster, Les Sealey, Mal Donaghy, Mark Stein, Ricky Hill, Mick Harford, Mike Newell, Tim Breacker, Rob Johnson, Ashley Grimes, Brian Stein, Peter Nicholas, David Preece, Darron McDonough, Robert Wilson, Andy Dibble, Richard Harvey and the rest of the lads have all done a great job on and off the pitch.

And with injuries ruling out so many established players for long periods at different times it has been especially satisfying to loyal fans to see the form maintained through such difficult periods.

So much so that now any team in the country looks upon a visit to Kenilworth Road with trepidation. The goalscoring attack has been backed up by a solid and dependable defence in which Les, Steve and Mal have been outstanding and the backbone of defiance has been further strengthened by the sustained good form of Peter Nicholas. Mark Stein, notably, has emerged to show his ability this season after fighting hard for a chance in recent years.

To all the first team squad and players, thank-you very much. We can only hope that 1987 brings us all as much pleasure and happiness as 1986.

Happy New Year.

1st Team ACTION



Today we review the exciting first half of the 1986-87 season with pictures of some of our most outstanding players: Les Sealey, Steve Foster, Mal Donaghy and Mark Stein. Pictures by Sportswide Photography.

VIEWS from the BENCH

Ron Howard



Chief scout, Ron Howard has nothing but praise for the way in which John Moore has settled into his new role as manager at Kenilworth Road this season. As with all members of staff, he has enjoyed seeing the team and the club go from strength to strength this season and today, in his Views from the Bench, he looks back on how the changeover and the progress have enhanced his work with the club.

Scouting network given a boost in Scotland

"Whenever there is a changeover you want to know what kind of direction the club is going to go in next and what kind of things to expect. I am very happy to say we have picked up things just as I would have liked. The manner of our acquisition and development of players has been left to continue in its previous style with the addition of Scotland to our full scouting network.

"This has, of course, had something to do with the fact that John is a Scot, as it has been his own range of contacts in Scotland which have enabled us to develop in this way. Now we have a very good set-up, everyone is happy and at ease and we all enjoy getting on with our work. From my own professional point of view, it is really great.

Schoolboys' rules

"One interesting point, in relation to Scottish football, is that we – that is to say English clubs – are not allowed to sign Scottish schoolboy footballers on until they have left school, but that Scottish clubs can. We are therefore at an obvious disadvantage. It was a measure obviously taken to stop the drain of their talent south of the border.

"It can mean, of course, sometimes a club will waste a lot of time and money on travel and training and so on looking after a youngster if he goes off and then signs for another club when it is all over. In England, we can sign our own schoolboys on schoolboy forms when they are still at school.

First-class atmosphere

"Our youth team, in whom I take a great deal of

interest, have continued to do really well under John Faulkner and I am pleased with them. Jim Ryan has also settled in well with the reserves and the general atmosphere at the club is first class and a key selling point when we are trying to attract young and talented players in competition with the big city clubs. There, sometimes, they may never make contact with the manager or the first team players – but here they meet and train with them all.

"It is one of our great strengths. The atmosphere is first-class. Boys at a young age need to be boosted up and they like to feel good. They can easily get lost in a big club when they are young and impressionable.

Good luck charm

"Because of the nature of my job, I am rarely able to see many first team games. Last year, whenever the first team knew I was here they would groan because I only seemed to bring them bad luck. Now it is different.

"I have seen two games this year – against Forest and Everton – and we have taken maximum points so I cannot be altogether a bad influence. Now their faces don't drop anymore.

"With the team doing so well and the club so happy, it is making it much easier in my job to attract players – the really hard part is finding players who are really going to make the Luton Town grade ..."



Glazing Repairs and Glass Supplies
Patio Door and Window Installations
Double Glazing (Secondary and Sealed Units)
Interior and Exterior Decorators
For Domestic and Commercial enquiries contact
Luton 573025/597505

For 24 hour Emergency Services contact Luton 573025
J. Sapsworth Ltd., 92-94 Marsh Road, Luton, Beds LU3 2NL

CLUB NEWS

TICKET OFFICE NEWS

On Sunday, January 11th, we are at home to Liverpool in the 3rd round of the F.A. Cup. This is an all-ticket match for members only, kick-off 3.05 pm.

On Saturday, January 17th, we are away to Southampton in a Today League Division One fixture, kick-off 3.00 pm.

On Saturday, January 24th, we are at home to Leicester City in a Today League Division One fixture, kick-off 3.00 pm.

For ticket and match information, please call Luton 30748 (daytime) or Luton 423293 (24 hour service) or call in to the Ticket Office at 125 Oak Road, Luton.

Pre-match Entertainment

We again welcome Luton Ladies who are today playing Chelsea Ladies in the pre-match football.

The music is provided by the Falcon Marching Band who are making their first appearance at the stadium.

Junior skill slot

Yes, another chance for the under-fourteens to bring a football and show their skills.

You are invited onto the pitch from approximately 1.45 to 2.15 pm before the Town play Liverpool a week tomorrow.

Please line up as the stewards direct, and afterwards, help us by leaving the pitch promptly.

FORTHCOMING MATCHES AT KENILWORTH ROAD

Football Association Cup, 3rd Round
Sunday, January 11, 1987
Luton Town v Liverpool
Kick-off 3.05 pm: all-ticket match

Football Combination
Saturday, January 17, 1987
Luton Town v Ipswich Town
Kick-off 2 pm.

MATCH REFEREE

Jeff Bray (Hinckley)

Jeff is a production controller with a dry cleaning firm. He is married with two daughters. He started refereeing in 1965 and progressed via the Football Combination. He was a linesman at UEFA Cup matches in 1978 and 1983 and refereed the F.A. Trophy Final in 1985.

Thanks

A collection for the Mayor of Luton's Christmas Appeal for the Elderly before the Everton match raised £486.42. We have been asked by the Mayor and the Town's three Rotary clubs to thank supporters for their "superb response".

Match Ball Sponsors



Today's match ball is sponsored by Bletchley Bobbers.

We welcome them and hope they enjoy the match and a successful afternoon.

HOTLINE Luton (0582)



Registered Office:
179-185 Dunstable Road, Luton

Ticket Office/Souvenirs:
125 Oak Road, Luton

Office Hours: 9am - 5pm (411622)
Advertising & Match Sponsorship:
Wendy Greaves, Marketing Executive (411622)

Stadium Hire: Mike Beevor
Stadium Sales Manager (411622)

Souvenirs: Junior Hatters (412418)

Match Tickets & Match Enquiries:
Bev Tyler, Retail Sales Supervisor,
(30748 24 hour service, 423293/4)

Banqueting & Function Facilities:
Alan Helm, Catering Manager (411526)

Promotions Office: John Cornall,
Development Executive (411622)



by BILL TOMLINS

THE TOWN

MERSEY MAGIC



● **Striker Mike:** Mike Newell is looking forward to next week's visit by Liverpool. He saves his best games and goals for Merseyside opposition. Good luck, Mike!

Good afternoon and welcome. I trust and hope everyone enjoyed a happy and festive Christmas and wish all our members and supporters a very peaceful New Year. We only hope 1987 turns out to be even more successful on and off the pitch at Kenilworth Road than 1986 which was an extraordinary year for us all.

Now, I am not one for doing much gazing into crystal balls, but I have a deep feeling that we could enjoy ourselves even more in the coming 12 months than we have in the last year. To go into any details would be an invitation courting on the disastrous – but, let me just say, I have a hunch about the New Year.

Light hearted

However, away from such light-hearted matters, and on with the serious business: On Sunday January 11th, when we entertain Liverpool in the third round of the F.A. Cup, we are inviting Junior Hatters, who are under 14, onto the pitch again in another Skill Slot.

Junior Hatters keen to show their talents are therefore encouraged to bring with them a ball and their Luton Town kit for a pre-

match spot which we anticipate taking place between 1.45 pm and 2.15 pm.

It should be a lot of fun for everyone on a busy and hectic day. With a reasonable share of luck, we hope to have something to celebrate again and we may even discover some exciting new talented youngsters in the early part of the afternoon.

Sponsors

Finally, but not last, in our thoughts, a warm welcome to our match sponsors today – Chamberlain Curtains and V G Green and Sons.

Chamberlain Curtains was established about seven years ago and specialises in exclusive designs and hand-made curtains. One fine example of their work – for which special thanks are due to Gary Chamberlain – is in our executive boxes where all the designs and furnishings were supplied by Chamberlains.

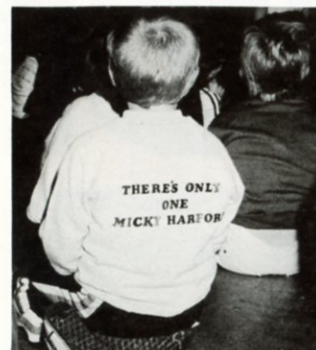
We also welcome V G Green and his guests. Greens are a family concern established in 1937 and they specialise in building executive style luxury homes.

A very happy New Year to everyone.

CHRISTMAS TUNES FROM CHURCH CHOIR



● **Vocal support:** The Calvary Church of God choir provided the pre-match entertainment when Everton were the visitors. They are pictured tuning up before the game.



● **Christmas message:** Every picture tells a story – and this young fan's feelings are easy to read as he enjoys the Junior Hatters' Christmas party.



● **Christmas Hatters:** The happy faces at the Junior Hatters' Christmas party said it all. The support from youngsters for this club is growing all the time. Happy New Year, Junior Hatters.



● **Christmas party:** Ashley Grimes and Brian Stein, pictured with his daughter Kimberly, were among the players who joined in the fun at the Junior Hatters' Christmas party.

CAPTAIN'S DIARY



STEVE FOSTER

A tough start to the New Year

Hello everyone and happy New Year. As you might guess, after all the holiday matches and excitement, we are glad to be getting back to routine and a regular Saturday fixture. I am sure Chelsea will be tough opposition as they are going through a very difficult spell and will be fighting for a result today.

Most of the lads here have been away from home a lot in the last couple of weeks and even on Christmas Day and New Year's Eve and so on when everyone else was busy enjoying themselves we were locked away and preparing for matches. But – and I write this column before I know the results of the holiday programme – I will be more than pleased if we have picked up the points.

Consistent form

Looking back over the last year, it is nice to see how consistent our form has been and how we have survived periods of unrest and so on when there have been a lot of injuries. That is always a good sign.

Today we shall be aiming to maintain our league form and to set us up for a great second half of the season and a go for the league title. But next week we may have a few other things on our minds when we meet Liverpool in the Cup. That will not make any difference to the lads today though I can promise. We all want to be on a winning team in the league.

There is nothing to replace the confidence of a winning run in the First Division. So cheer us on again today. With your support we can really lift ourselves. Thanks for everything so far – and good luck again for 1987.

STACEY NORTH





CLUB COMMENT

John Smith, Chief Executive.

On the road to a happy future

Exactly a year ago, I wrote in the New Year's Day programme that we were looking forward to an exciting 12 months. How right I was, for one way and another, we have certainly hogged the headlines.

I wrote of our aims: to create a friendly secure and happy family entertainment centre through a membership scheme. Now, with home gates rising, families rediscovering the joy of watching football together, and an unblemished behaviour record at Kenilworth Road this season, we are on the road to success.

But it is regrettable that this achievement has put us at loggerheads with many of our colleagues in Football.

For 1987, if the improvement is maintained, we will be looking at ways of admitting small, controlled groups of visiting supporters which could be integrated in our home crowd. But we will not return to fences and segregation, nor would we jeopardise the security now enjoyed by our supporters.

All-round improvement

I wrote also of our tremendous plans for the ground. Twelve months on, the place is scarcely recognisable. A comfortable family stand, a new roof for the Kenilworth Stand, and a magnificent executive suite development which is already contributing towards the financial stability of the Club. New catering facilities, new electronic scoreboards, better views from the mainstand -

improvements are everywhere.

One of our dearest wishes for 1987 is to provide better facilities for our disabled supporters. We have discussed our plans with those concerned and will do all in our power to put them into being.

It is also our intention to develop closer links with the community. The hundreds of local footballers now using our synthetic pitch for matches of their own is part of this, as are the coaching schemes for local youngsters.

School groups invited

In addition, we have invited groups from schools throughout Bedfordshire, Hertfordshire and Buckinghamshire to be our guests at home matches in 1987. My wish for these youngsters who are Football's future: enjoy yourselves and come again.

At least one setback is inevitable this year. Work on the A505 Relief Road this Spring will slice away large areas of our car park and executive lounges, so this summer will see still more extensive development at Kenilworth Road.

One change I could not have predicted was that of manager and coaching staff. However, John Moore and co set the seal on a memorable year in their own way, with victories against some of the top teams like Liverpool, Nottingham Forest and Everton.

My last wish for 1987? More of the same and a happy, prosperous and safe New Year to all.



S.G.L. CATERERS LIMITED

SGL Caterers are pleased to supply catering services to Luton Town Football Clubs new executive suite complex, together with all sponsorship and membership areas and will be delighted to receive enquiries for your function, large or small, held either at your own venue or at the stadium, where we offer hire facilities for all rooms.

Please phone Mr Alan Helm General Catering Manager on 0582 411526

Today's **MATCH SPONSOR**



**CURTAINS · BLINDS
WALLCOVERINGS
FURNITURE**

221 REGENTS PARK ROAD FINCHLEY LONDON N3 3LD
TELEPHONE 01-346 8565



• **Paul Lewis:** One of the young forwards keeping a smile on Jim Ryan's face.

THE FOOTBALL COMBINATION TABLE 1986/87

	P	W	D	L	F	A	Pts
Tottenham Hotspur	16	10	4	2	44	15	24
Chelsea	16	11	2	3	39	14	24
Arsenal	15	10	3	2	31	16	23
Swindon Town	18	10	2	6	51	39	22
Queens Park Rangers	16	9	4	3	37	29	22
Norwich City	16	10	1	5	38	30	21
West Ham United	15	8	3	4	27	19	19
Oxford United	15	7	3	5	35	26	17
Ipswich Town	14	8	1	5	20	21	17
Fulham	14	5	4	5	19	19	14
Watford	15	4	6	5	23	25	14
Luton Town	15	6	1	8	30	29	13
Southampton	15	5	2	8	22	24	12
Crystal Palace	15	4	4	7	22	24	12
Charlton Athletic	14	4	3	7	19	25	11
Millwall	14	3	3	8	20	31	9
Portsmouth	15	3	2	10	19	35	8
Reading	12	3	2	7	15	36	8
Brighton & Hove Albion	14	2	0	12	15	41	4
Bristol Rovers	14	1	2	11	9	37	4

FOOTBALL COMBINATION 1986/87

Date	Opponents	Result	Date	Opponents	Result
Aug 1986			Jan 1987		
Aug 23	Arsenal	2-3	Jan 3	Portsmouth	
Aug 26	Ipswich Town	1-2	Jan 10	Arsenal	
Sept 6	Brighton	3-1	Jan 17	Ipswich	
Sept 10	Reading	1-2	Jan 21	Brighton	
Sept 20	Southampton	4-1	Jan 31	Reading	
Sept 27	Chelsea	0-0	Feb 7	Swindon	
Sept 30	Charlton	1-3	Feb 14	Southampton	
Oct 4	Watford	4-2	Feb 21	Chelsea	
Oct 10	Norwich City	1-2	Feb 24	Charlton Ath	
Oct 18	Bristol R	3-0	Mar 7	Tottenham	
Oct 21	Swindon	3-1	Mar 11	Bristol R	
Oct 25	Tottenham	1-3	Mar 21	Norwich	
Oct 28	QPR	0-6	Mar 24	Fulham	
Nov 8	Crystal Palace	1-2	Mar 28	Watford	
Nov 22	Portsmouth	5-1	Apr 1	Crystal Palace	
Dec 6	Millwall	9-2	Apr 11	QPR	
Dec 20	West Ham	6-1	Apr 14	Millwall	
			Apr 25	West Ham	
			May 2	Oxford	
			May 6	Fulham	



• **Marc North:** Mr Versatility has shown his worth everywhere this season.

SOUTH EAST COUNTIES 1986/87

Date	Opponents	Result	Date	Opponents	Result
1986			1986		
Aug 23	Northampton	3-2	Dec 20	Chelsea†	2-2
Aug 27	Brentford	3-0	Dec 27	Oxford	
Aug 30	Brighton	1-2			
Sept 2	Bristol R (SJFC)	3-0	1987		
Sept 6	Crystal Palace	0-0	Jan 3	Wimbledon	
Sept 13	Tottenham	1-1	Jan 10	Bournemouth	
Sept 20	Cambridge U†	1-0	Jan 24	Colchester	
Sept 24	Ipswich*	1-0	Jan 31	Reading	
Sept 27	Oxford	5-0	Feb 7	Brighton	
Sept 29	Colchester*	5-2	Feb 14	Crystal Palace	
Oct 4	Northampton	1-2	Feb 21	Southampton	
Oct 11	Southend	5-1	Feb 28	Bournemouth	
Oct 18	Wimbledon	2-0	Mar 7	Swindon	
Oct 25	Colchester	3-1	Mar 21	Swindon	
Nov 1	Northampton†	6-1	Mar 28	Southend	
Nov 8	Reading	5-2			
Nov 11	Charlton (SJFC)	3-3	† League Cup		
Nov 11	Charlton		* Eastern Junior Floodlit Cup		
	(SJFC) replay	3-1			
Nov 29	Bristol R	3-1			
Dec 3	Wolverhampton (FAYC)(2)	5-1			
Dec 6	Southampton	1-2			
Dec 13	Tottenham	1-5			

Reserve & Youth



JIM RYAN



JOHN FAULKNER

EVERYONE HAPPY WITH HALF-TERM RESULTS AT TURN OF THE YEAR

Here we are at the New Year, half-way through the season, and Luton Town's football production line is operating better than ever. Four of the youth team have recently signed young professional forms, while Richard Harvey has played for the First Team, recalled youth team coach John Faulkner.

"Everyone says if you get two out of 10 trainees turning pro, you've done well, so the results here speak for themselves. It is a tribute to Chief Scout Ron Howard and his network of contacts that we attract such talented youngsters from all five of the home countries, often against competition from bigger clubs.

Early responsibility

"Of course one of Luton's attractions is that young players do get responsibility early. My youth team back four are the regular defensive unit for the reserves, for example.

"It all helps to create a healthy pressure on the senior players, and valuable income for the Club when eventually some are sold to continue their career elsewhere."

Despite regular reserve team calls, the youth team remains in the Youth Cup, the Floodlit Cups and League Cup. "Honestly, there's nothing I regret about the season so far," added John. "And I'm particularly pleased about the sense of stability and continuity caused by John Moore's promotion."

Encouraging results

Reserves' coach Jimmy Ryan said: "I've been lucky to inherit John Moore's reserve team organisation and John Faulkner's youngsters! Our Football Combination results are quite encouraging considering the fact that I do field a very young side, which often plays against vastly more experienced teams. First team injuries haven't helped either.

"But I get a great deal of satisfaction when I help one of my players establish himself in the senior squad."

INTRODUCING...

CHELSEA

Chelsea arrive at Kenilworth Road this afternoon no doubt hoping that 1987 will bring much-changed fortunes for them after enduring a strange 12 months during 1986. In that period, they were chasing the title for the first part of the year – the end of the 1985-86 season – and then fighting desperately among the stragglers in the second period. The pressure built up on them relentlessly in the autumn with frequent calls for changes, and disruptions.

Most memorable and recent among the Chelsea performances will be their brave showing before Christmas when they travelled up to Anfield before going down at the hands of Liverpool on an afternoon when the Reds produced three brilliant goals. Manager John Hollins was given assurances and backing by his chairman Ken Bates the same weekend. That day too they were without Nevin and Dixon, two internationals whose absence would weaken any attack in the country.

Players likely to be on duty today:

Eddie Niedzwiecki – Welsh international goalkeeper Eddie is now 27. He signed from Wrexham in May 1983. He played for Wrexham as a 16-year-old in the European Cup and has a wealth of experience.

Darren Wood – Promising young full-back Darren Wood joined the Blues from Middlesbrough in September 1984. Born in Scarborough, he is now 22.

Doug Rougvie – Doug is one of the toughest and most durable defenders in the First Division. Aged 30, he joined Chelsea from Aberdeen in July 1984 and he has one full Scottish international cap.

Colin Pates – Captain Colin joined Chelsea when he signed as a professional in July 1979. He is a fine defensive player who leads the team by example. Aged 25. A former England youth international. Born Merton.

Joe McLaughlin – Tough central defender Joe is 26. He signed for Chelsea from Morton in Scotland in May 1983



Chelsea manager John Hollins has endured a tough time from sections of the Fleet Street sportswriters this season as Chelsea have struggled to maintain their fine form of last season when they challenged for the title. But Hollins, a dedicated and at times earnest man, has emerged relatively unscathed from the ordeals and maintains a popular position with most of the loyal Chelsea followers. As a player with the club in the Swinging 1960's and after, he enjoyed a long playing career as one of the best wing-halves in the First Division and he was unlucky not to have a long England career. He is a hard and punctual trainer and has kept himself fit should the Blues require him in an emergency.

after making more than 300 appearances for the Greenock club. He has 12 Scottish under-21 caps.

Mick Hazard – Mick, 26, is a refined midfield player who was Chelsea's record signing when he moved across London from Tottenham for a £310,000 fee in September 1985. Born Sunderland, he is a good passer and has a strong and accurate shot.

Pat Nevin – Glasgow-born Pat is one of the most exciting wingers in the First Division. He joined Chelsea from Clyde in May 1983. Now 23, he is a full Scottish international and well-known as an independent and individualist thinker on the game.

David Speedie – David, 26, has recently emerged from a dark spell during which he fell out with the club. He joined Chelsea from Darlington in 1982 and has since established himself as a Scottish international and one of the most dangerous strikers in the country.

Kerry Dixon – Luton-born Kerry is fighting his way back after injury. A full England cap, he is a tall and old-fashioned centre-forward with a great scoring record. Joined the Blues from Reading in August 1983.

Keith Jones – Young and skilful midfielder Keith is 21. He is a former England schoolboy and youth international. Born in Dulwich, he is a promising player for the future.

Nigel Spackman – Signed from Bournemouth in 1983, Nigel Spackman has since become one of Chelsea's most influential players. Born Romsey, he is a real midfield powerhouse. Aged 26.



Back Row from left: Terry Howard, Roy Wegerle, John McNaught, Colin Lee, Joe McLaughlin, Kerry Dixon, Robert Isaac, Keith Dublin. Middle row: John Hollins, Colin West, Keith Jones, Doug Rougvie, Steve Francis, Eddie Niedzwiecki, Tony Godden, Colin Pates, Nigel Spackman, Micky Bodley, Jerry Murphy, Ernie Walley. Front row: Kevin McAllister, Darren Wood, Gordon Durie, Phil Priest, John Bumstead, Mick Hazard, Pat Nevin, David Speedie, John Millar, Paddy McCarthy.

B. DOHERTY SKIPHIRE

34 MOUNT PLEASANT ROAD
LUTON
Telephone: 574633 & 574799

SHOREY'S TRAVEL

LUXURY
COACH HIRE
FOR FOREIGN &
UK EXECUTIVE
COACHES



COMPETITIVE RATES · FRIENDLY SERVICE · LOCAL BASED

28 Sheepfold Hill, Flitwick, Bedfordshire
Telephone: Flitwick 713289 Silsoe 60694

FOR THE COMPLETE BUILDING SERVICE AND
HOME IMPROVEMENTS



T. J. ALDRIDGE

Builders



302 Selbourne Road, Luton, Beds LU4 8NU.
Telephone: 505142-505413

EXTENSION SPECIALISTS
ESTIMATES FREE

RYDER INSURANCE CONSULTANTS LTD

Contact us first for

**MORTGAGES – REMORTGAGES – FIRE
– ACCIDENT – LIFE – PENSIONS –
MOTOR** (installment facilities available)

4b North Street, Leighton Buzzard, Beds.
Tel: 0525 371301

The Cooper Printing
Equipment Company Limited

MANUFACTURERS OF FLEXOGRAPHIC
PRINTING & PLATE MAKING EQUIPMENT

Heathfield Works, Leyton Rd, Harpenden, Herts AL5 2JB
Tel (05827) 64431 (24 hours), 64432, 64433 & 68608
Telex 826560 COOPER G



JUNIOR HATTERS!

BY PETER NICHOLAS

HOPING TO MAINTAIN OUR FORM

Today's lucky Junior Hatters membership number is 719. The winning member should contact Bev Tyler in the ticket office at Oak Road with his or her membership card for two free tickets to one of our home matches.

I would like to take this opportunity to wish you and all your family a Happy New Year. And let's hope that we can maintain our position in the League.

I think that we have done well this

season with the injuries that we have had. We have been without Ricky Hill, David Preece and from the start of the season, Mick Harford. Mick is training hard now so it won't be long before we see him playing again.

Today we welcome Chelsea to Kenilworth Road. Have a good day and I will see you all at our next home game when we are playing Liverpool in the F.A. Cup.

ESCORTS

MASCOT

ESCORTS



Robert Ginsberg



Ashley Dye



John Dawkins



Paul Ritmond



James Cartmell

KENILWORTH THE CAT



QUIZ

First Eleven

W	O	X	N	C	R	M
F	A	A	O	N	A	O
E	L	L	I	R	Y	C
A	I	V	T	R	D	U
N	E	I	O	E	N	I
K	N	K	N	A	R	F
T	E	D	Y	R	A	G

Look at these soccer surnames and find the eleven matching first names hidden in any direction in the square – cross them through as you do. Get a goal if the uncrossed letters spell out a club.

Amesen	Cork	Drinkell
Henry	O'Neill	Owen
Regis	Slatter	Sullivan
Wilkins	Winterbottom	

The answers to this puzzle will appear in the next programme.

Answers to Soccer Ninety-Niner No. 6

Across
 1. train 5&9ac. John Duncan 6. Massie 8. finish 9. See 5 across
 10. Cannon 12. Star 13. Aston
Down
 1. Tom 3&2. Who's Who In Soccer 4. defence 5. Jennings
 7. Augusto 11. non



V.G. GREEN & SONS LTD

BUILDING CONTRACTORS

Amphill Road
 Shefford, Beds. SG17 5BB
 Telephone Hitchin 813232

The team that's one step ahead.

Always ahead of the game.
There's never been a better time
to buy a brand new
WIMPEY HOME!

- ★ 100% mortgages subject to status.
- ★ Financial assistance for 3 years.
- ★ Fitted carpets and curtains.
- ★ Fully equipped kitchen.

For details of our developments at:
Aylesbury, Houghton Regis, Thame,
Ware, Knebworth, Milton Keynes,
Luton, Wheatley, Hertford, Welwyn
and Palmers Green please
telephone Luton 0582 503248.



£100 towards your new home.

Cut out this coupon and take it with you to the Wimpey development of your choice. We will refund your £100 deposit to you upon legal completion. (Only applies to the above developments).

Name: _____

Address: _____

Tel: _____

For office use:

Development _____ Plot No. _____ L.T.F.C.

Britain's No.1
WIMPEY
WELCOME HOME

Views from the media

Does the rosette belong to Luton?

As a change from the usual glance through the national newspaper sports pages, we slip back today and dip into the features contained within Pastime magazine of October 2, 1895 – a full 93 years ago.

Thanks to the endless detective work of club statistician Roger Wash, who discovered the item, we may be able to suggest in future that Luton Town were among the first creators of rosettes as a means of displaying the favours of a particular team!

Pastime magazine (October 2, 1895) – "The Metropolitan station at King's Cross was invaded by about a thousand gentlemen from Luton on their way to the Southern League match at Millwall. Most of them had improved on the ordinary piece of pasteboard, which has 'Play Up, Luton', printed in large letters upon it, and wore a coloured and highly ornamental device, in centre of which was a photograph of the wearer's favourite player.

The decorum of millionaires

"Though they were all very excited they conducted themselves with as much decorum as if they had been millionaires, except that they showed more impatience over the slowness of the train."

Will the age of such innocence ever return?

Roger Wash comments: "Luton, incidentally, lost the game at Millwall 2-0 before a crowd of 10,000. No mention is made in the reports of the behaviour of the 'gentlemen' on the return journey to Luton, or indeed, whether they all went back at all..."



**WHEN LUTON GET NEAR
THE BOX TODAY,
WE HOPE
THEY'LL BE WATCHING ANGLIA.**



TUNED IN TO THE AREA.

Brook House, Park Lane, London W1Y 4DX.
Tel: 01-408 2288.

Anglia House, Norwich NR1 3JG.
Tel: 0603 615151.

16 Park Street, Luton LU1 2DP.
Tel: 0582 29666.

GOLDEN OLDIES

HOW DETERMINED CHELSEA STALKED JOE PAYNE

Although this will be our 30th League meeting with Chelsea, all previous games have taken place since the War with the Blues having the better record, gaining eleven wins to our eight.

We did however, meet in pre-war F.A. Cup competition when honours were even. In 1926-27 then Third Division Luton had walked through to the Third Round, beating non-League London Caledonians and Northfleet at home on the way but were humbled 4-0 at Stamford Bridge in what was described as "a pitifully one-sided affair".

Luton were still a Third Division side when, in 1934-35, the Third Round draw pitched us to play at Chelsea again. Exempted to that stage of the competition because of their cup exploits of the previous two seasons, Luton were determined to put on a better show and gained an interval lead through Sam Bell. The ball allegedly did not go over the line as the London Press were keen to show in the newspapers the following morning printing a variety of photographs.

Hanging from a string

The "Luton News" not to be outdone took photographs of a ball hanging from a string from the crossbar to show how the eye could be deceived, but in any event the goal stood.

Cup favourites Chelsea managed to scramble a goal seven minutes from the end courtesy of James Argue but they were not relishing a replay at Kenilworth Road knowing the Town should have won at the first attempt.

A record crowd of 23,041 paying customers gathered on 16th November 1935, together with several hundred who broke down the gates, to witness a fine Town performance with Jack Ball and Fred Roberts scoring in a rather easy 2-0 win.

In the Town reserves at that time was a young wing half called Joe Payne who on that never-to-be-forgotten day in April 1936, was converted to centre-forward and slammed in ten goals in our 12-0 thrashing of Bristol Rovers.

Payne was obviously hot property especially as he scored 55 goals in the following season as the Town won promotion and in the summer of 1937 a bid of £10,000, which was a huge amount in those days, was turned down by Luton chairman Charles Jeyes.

War hit career

The club making the offer, Chelsea, were determined to get their man however, despite Paynes' slump in form the next season and bouts of "ill health". Chelsea returned with a fresh bid and on March 11th 1938 Payne moved into Division One on the promise of a high "benefit" after five years service.

Whether he picked up the benefit payment is not recorded because the War effectively curtailed his career as it did so many others including Hugh Billington who was the replacement for Payne in the Luton forward line.

Local boy Billington was 32 when he too, signed for Chelsea in March 1948, at a time when the Town were under financial pressure. Billy Hughes, the accomplished fullback, only signed the previous summer from Birmingham for a record fee, also went to Chelsea at the same time giving rise to "nursery club" jibes.

The criticism certainly hurt as we have not sold another player to Chelsea since!



• **Joe Payne:** Ten goals against Bristol Rovers made him a legend at Kenilworth Road.



• **Mal Donaghy:** Midfielder Mal scored a beauty against Chelsea in a thrilling 3-3 draw here on New Years Day, 1980.

NO
PRIZES FOR
GUESSING
WHICH
NEWSPAPER
BRINGS YOU
THE BEST
COVERAGE
OF THE
TODAY LEAGUE.

On Fridays, it's the Bobby Charlton column.

On Saturdays, there are match previews and Sports Extra's in-depth analysis.

On Sundays, we bring you reports on all the first and second division matches, plus a full round-up of the 3rd and 4th.

On Mondays, Action Replay

shows you the weekend's action in full colour. And everyday, along with colour pictures, you'll get the latest on your team from our team: Bob Harris, Alan Thompson and Roy Collins.

When it comes to soccer coverage, we're in a league of our own. Get the paper that's totally different. Today.

THE
TODAY
LEAGUE

FIRST TEAM

Luton Town F-A Att Pos 1

2 3 4 5 6 7 8 9 10 11 12

UPDATE

1986-87 SEASON

FOOTBALL LEAGUE DIVISION ONE (Up to and including 1 January 1987)

HOME											AWAY												
P	W	D	L	F	A	P	W	D	L	F	A	P	W	D	L	F	A	P	W	D	L	F	A
23	9	3	0	22	4	23	9	3	0	22	4	23	9	3	0	22	4	23	9	3	0	22	4
23	8	3	1	28	8	23	8	3	1	28	8	23	8	3	1	28	8	23	8	3	1	28	8
23	6	3	2	23	9	23	6	3	2	23	9	23	6	3	2	23	9	23	6	3	2	23	9
23	7	5	0	25	9	23	7	5	0	25	9	23	7	5	0	25	9	23	7	5	0	25	9
23	5	3	3	16	11	23	5	3	3	16	11	23	5	3	3	16	11	23	5	3	3	16	11
23	7	3	1	18	12	23	7	3	1	18	12	23	7	3	1	18	12	23	7	3	1	18	12
23	7	3	1	14	6	23	7	3	1	14	6	23	7	3	1	14	6	23	7	3	1	14	6
23	6	2	4	24	20	23	6	2	4	24	20	23	6	2	4	24	20	23	6	2	4	24	20
23	7	3	2	24	10	23	7	3	2	24	10	23	7	3	2	24	10	23	7	3	2	24	10
23	6	5	1	25	13	23	6	5	1	25	13	23	6	5	1	25	13	23	6	5	1	25	13
22	8	2	2	18	10	22	8	2	2	18	10	22	8	2	2	18	10	22	8	2	2	18	10
23	5	2	4	15	12	23	5	2	4	15	12	23	5	2	4	15	12	23	5	2	4	15	12
23	6	4	2	21	14	23	6	4	2	21	14	23	6	4	2	21	14	23	6	4	2	21	14
23	6	2	4	22	13	23	6	2	4	22	13	23	6	2	4	22	13	23	6	2	4	22	13
23	5	3	3	17	14	23	5	3	3	17	14	23	5	3	3	17	14	23	5	3	3	17	14
23	3	3	6	13	22	23	3	3	6	13	22	23	3	3	6	13	22	23	3	3	6	13	22
22	5	1	4	19	16	22	5	1	4	19	16	22	5	1	4	19	16	22	5	1	4	19	16
23	4	5	15	15	15	23	4	5	15	15	15	23	4	5	15	15	15	23	4	5	15	15	15
23	5	3	3	17	13	23	5	3	3	17	13	23	5	3	3	17	13	23	5	3	3	17	13
23	5	2	4	16	18	23	5	2	4	16	18	23	5	2	4	16	18	23	5	2	4	16	18
23	4	2	5	16	18	23	4	2	5	16	18	23	4	2	5	16	18	23	4	2	5	16	18
23	3	5	3	16	15	23	3	5	3	16	15	23	3	5	3	16	15	23	3	5	3	16	15

APPEARANCES AND GOALSCORERS (1986/87)

League				League			
Pls	Pls	Pls	Pls	Pls	Pls	Pls	Pls
Tim Breacker	14	-	Mike Newell	23	7	-	-
Mal Donaghy	23	-	Peter Nicholas	23	-	-	-
Steve Foster	21	1	Marc North	2(3)	-	-	-
Ashley Grimes	17	-	Stacey North	2	-	-	-
Mick Harford	2	-	Emeka Nwajobi	6	-	-	-
Richard Harvey	1	-	David Preece	7	-	-	-
Ricky Hill	14	1	Brian Stein	21	9	-	-
Rob Johnson	22	-	Mark Stein	14(3)	5	-	-
Darron McDonough	7(4)	-	Les Sealey	23	-	-	-
Ricky McEvoy	(1)	-	Robert Wilson	11(3)	1	-	-

Leading goalscorers

Division One	
28	- Allen (Tottenham)
23	- Rush (Liverpool)
21	- Aldridge (Oxford)
20	- Cottey (West Ham)
17	- Clarke (Southampton)
14	- Heath (Everton)
	- Sheedy (Everton)
	- Hayes (Arsenal)
13	- Birtles (Nottingham Forest)
	- Chapman (Sheffield Weds)

Today's action

Aston Villa v Notts Forest
Leicester v Sheffield Wed
Liverpool v West Ham
Man City v Oxford
Newcastle v Coventry
Norwich v Charlton
QPR v Everton
Southampton v Man Utd
Tottenham v Arsenal
Wimbledon v Watford

Aug 23	Leicester City	1-1	9801	-	Sealey
Aug 26	Southampton	2-1	8777	-	Sealey
Aug 30	Newcastle United	0-0	9254	2	Sealey
Sept 3	Aston Villa	1-2	13122	12	Sealey
Sept 6	Chelsea	3-1	13040	7	Sealey
Sept 13	Arsenal	0-0	9876	8	Sealey
Sept 20	West Ham United	0-2	19133	13	Sealey
Sept 27	Manchester City	1-0	9731	10	Sealey
Oct 4	Tottenham Hotspur	0-0	22738	10	Sealey
Oct 11	Norwich City	0-0	10022	11	Sealey
Oct 18	Manchester United	0-1	39927	12	Sealey
Oct 25	Liverpool	4-1	13140	10	Sealey
Nov 1	Queens Park Rangers	1-0(+)	9085	7	Sealey
Nov 8	Wimbledon	1-0	5928	5	Sealey
Nov 15	Nottingham Forest	4-2	11097	4	Sealey
Nov 22	Sheffield Wednesday	0-1	21171	6	Sealey
Nov 29	Charlton Athletic	1-0	9373	5	Sealey
Dec 6	Oxford United	2-4	8804	7	Sealey
Dec 13	Everton	1-0	11137	5	Sealey
Dec 20	Arsenal	0-2	28217	6	Sealey
Dec 26	Watford	0-3	11140	8	Sealey
Dec 28	Nottingham Forest	2-2	20273	8	Sealey
Jan 1	Coventry	1-0	16656	7	Sealey
Jan 3	Chelsea				
Jan 11	Liverpool (FAC 3)				
Jan 17	Southampton				
Jan 24	Leicester City				
Jan 31	F A Cup Round 4				
Feb 7	Newcastle United				
Feb 14	Aston Villa				
Feb 21	Manchester City (FAC 5)				
Feb 28	West Ham United				
Mar 7	Liverpool				
Mar 14	Manchester United (FAC 6)				
Mar 21	Norwich City				
Mar 28	Tottenham Hotspur				
Apr 4	Wimbledon				
Apr 11	Queens Park Rangers (FAA)				
Apr 18	Coventry				
Apr 21	Watford				
Apr 25	Sheffield Wednesday				
May 2	Charlton Athletic				
May 5	Oxford United				
May 9	Everton				
May 16	F A Cup Final				

© The Football League FAC = F.A. Cup Indicates player substituted ♦ indicates substitute used Home fixtures in **Bold** Scorer's name in **Bold** P = Penalty * denotes own goal

Breacker	Johnson	Nicholas	Foster	Donaghy	Hill	B. Stein ¹	Newell	(Wilson)	Nwajobi	♦North
Breacker	Johnson	Nicholas	Foster	Donaghy	Hill	B. Stein ¹	Newell	Wilson ¹	Nwajobi	North
Breacker	Johnson	Nicholas	Foster	Donaghy	Hill	B. Stein	Newell	Wilson	Nwajobi	North
Breacker	Johnson	Nicholas	Foster	Donaghy	Hill	B. Stein ¹	Newell	Wilson	Nwajobi	♦North
Johnson	Grimes	Nicholas	Foster	Donaghy	Hill	B. Stein ¹	Newell ²	Wilson	Nwajobi	Preece
Johnson	Grimes	Nicholas	Foster	Donaghy	Hill	B. Stein	Newell	Wilson	(Nwajobi)	♦M. Stein
Johnson	Grimes	Nicholas	Foster	Donaghy	Hill	B. Stein	(Newell)	Wilson	Preece	♦M. Stein
Johnson	Grimes	Nicholas	Foster	Donaghy	Hill	B. Stein ¹	Newell	M. Stein	Preece	Nwajobi
Johnson	Grimes	Nicholas	Foster	Donaghy	Hill	M. Stein	Newell	North	Preece	Wilson
Johnson	Grimes	Nicholas	Foster	Donaghy	Hill	M. Stein	Newell	(M. North)	Preece	♦McDonough
Breacker	Grimes	Nicholas	Foster	Donaghy	Hill	B. Stein	Newell	(M. Stein)	Preece	♦McDonough
Johnson	(Grimes)	Nicholas	Foster	Donaghy	Hill ¹	B. Stein	Newell ²	M. Stein	Preece	Wilson
Johnson	Harvey	Nicholas	Foster	Donaghy	Hill	B. Stein	Newell	M. Stein	(Preece)	♦McDonough
Breacker	Johnson	Nicholas	Foster	Donaghy	Hill	(B. Stein)	Newell	M. Stein ¹	McDonough	Wilson
Breacker	Johnson	Nicholas	Foster ¹	Donaghy	Wilson	B. Stein ¹	Newell	M. Stein ²	(Grimes)	♦McDonough
Breacker	Johnson	Nicholas	Foster	Donaghy	McDonough	B. Stein	Newell	M. Stein	(Grimes)	Wilson
Breacker	Johnson	Nicholas	Foster	Donaghy	Wilson	B. Stein	Newell	M. Stein ¹	McDonough	North
Johnson	Grimes	Nicholas	Foster	Donaghy	Breacker	B. Stein ¹	Newell	M. Stein ¹	(McDonough)	♦North
Breacker	Johnson	Nicholas	Foster	Donaghy	McDonough	B. Stein	Newell ¹	M. Stein	Grimes	Wilson
Breacker	Johnson	Nicholas	S. North	Donaghy	McDonough	B. Stein	Newell	M. Stein	Grimes	Wilson
Breacker	Johnson	Nicholas	S. North	Donaghy	(McDonough)	B. Stein	Newell	M. Stein	Grimes	♦McEvoy
Breacker	Johnson	Nicholas	Foster	Donaghy	(Wilson)	B. Stein ¹	Newell ¹	Harford	Grimes	♦M. Stein
Breacker	Johnson	Nicholas	Foster	Donaghy	Wilson	B. Stein	Newell	Harford	Grimes	M. Stein

adidas

Probably
the world's most
advanced and researched
sportswear



Abacus Press

Interplan House, North Bridge Road,
Berkhamsted, Herts HP4 1ET.
Tel: (04427) 74391 Fax: 74873

Voucher No. 12

Vauxhall Teamcheck.

Luton Town	Chelsea
1 Les Sealey	1 Eddie Niedzwiecki
2 Tim Breacker	2 Darren Wood
3 Rob Johnson	3 Doug Rougvie
4 Peter Nicholas	4 Colin Pates
5 Steve Foster	5 Joe McLaughlin
6 Mal Donaghy	6 Mick Hazard
7 Ricky Hill	7 Pat Nevin
8 Brian Stein	8 David Speedie
9 Mike Newell	9 Kerry Dixon
10 Mark Stein	10 Keith Jones
11 Ashley Grimes	11 Nigel Spackman
Sub	Sub

Referee: J.E. BRAY (Hinckley)

Linesmen: T.M. HOBBS (Red Flag) R.L. TYE (Yellow Flag)

It keeps on topping the league.



The New 1987 Vauxhall Cavalier.



BACKED BY THE WORLDWIDE
RESOURCES OF GENERAL MOTORS

Designed and printed by Abacus Press, Berkhamsted, Herts.