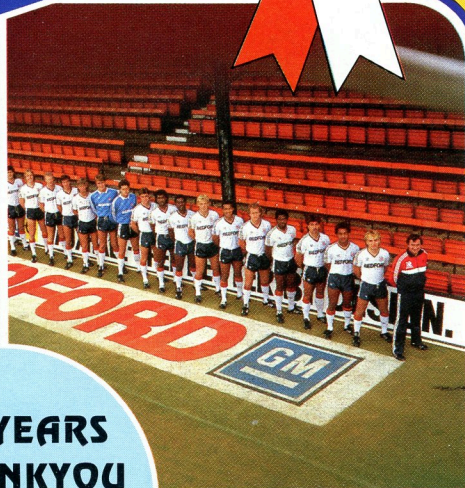
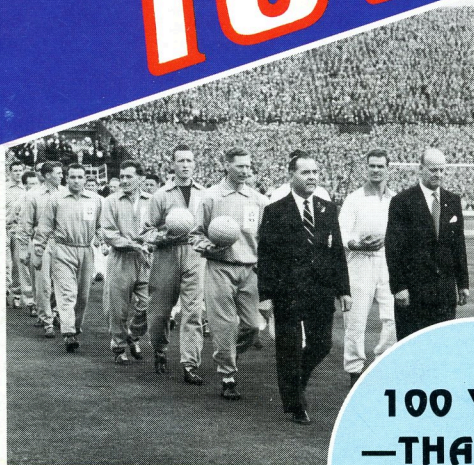
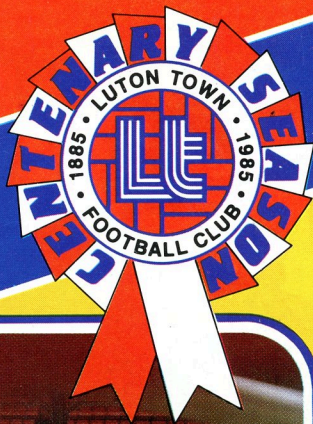
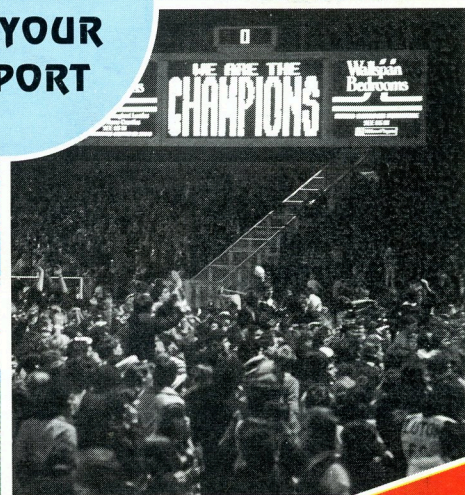
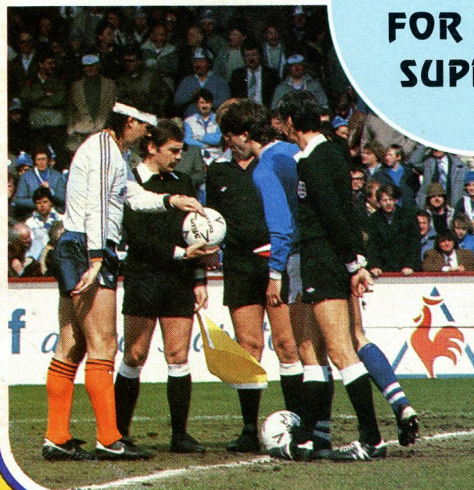


Official Programme
Price £1.00

LUTON TOWN



100 YEARS
—THANKYOU
FOR YOUR
SUPPORT



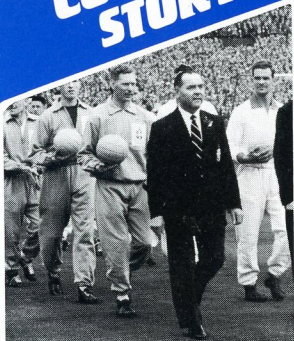
Today's match is sponsored by:
WALLSPAN BEDROOMS

Canon League Division One
LUTON TOWN v. WATFORD
Saturday, April 26th, 1986
Kick-off 3.00 pm

ACTION REPLAY

REDS MARCH ON

COVER STORY



● 100 years on: Today's match is the last of our exciting Centenary season.

INSIDE

David Pleat	p.5
Graham Mackrell	p.7
Chairman's Message	p.8
John Smith	p.8
Top Hatters	p.14
Bill Tomlins	p.16
Steve Foster	p.17
Roger Wash	p.28



● Out of luck: Steve Foster's thumping header against the bar was the nearest we came to equalising against Liverpool in an exciting clash last week. Gareth Owen's pictures capture Mitchell Thomas, Mike Newell, Steve Foster and Mick Harford on the attack.



WHA

**W. H. ALLSOP & SONS
(Builders) LTD**

Established 1950

● BUILDING SERVICES ● WINDOWS ● ROOFING ● MINI-SKIP HIRE

153 New Town Street, Luton LU1 5BR. Telephone: (0582) 458000

**Falcon
Holidays**



ATO

190 Campden Hill Road London W8 7TH

13 seasons of top class competition and we're still top of the holiday league! Try a Falcon Holiday this year and find out why we're unbeatable.

Tel: 01-221 6298

EVERYTHING YOU LIKE HERE.



No-one can deny the huge success of the Astra Van.

Now the new Astramax can only add to the popularity of the range, while adding to the discomfort of competitors (but certainly not of drivers).

The Astra Van is well-known for the best 'office' set-up and for the best handling and performance in its class. Same difference for Astramax.

Drivers can take comfort, too, from the Astramax (and Astra Van) being equipped with a proper bulkhead. Unlike some other vans.

The slippery smooth shape is more than a modern front for business. The Cd factor is a low 0.34.

While at the business-end, twin rear doors open to a 90° stop. Or a full 180°; handy for loading bays. And for taking on a choice of 365 or 560 kg payloads in the huge 82 cu. ft. load-space.

For even more load-space, optional with the Astramax, is an extended load-deck in place of the passenger seat.

On the small side, fuel consumption and all the running costs. Whatever your choice from three petrol engines or a diesel, with 4-speed, 5-speed or automatic gearboxes (according to engine).

To end with the finish, the corrosion-protection and paint process is the most-up-to-date in Europe.

As for the Astramax's price, it's attractive enough to save you the bother of shopping around.

PLENTY OF WHAT YOU NEED HERE.



BEDFORD 
Now the driving force.

Bedford Commercial Vehicles, Division of General Motors Overseas Commercial Vehicle Corporation,
P.O. Box No. 3, Luton LU2 0SY.



LUTON TOWN

Welcome you all to our Centenary Season!

HONOURS

FA CUP FINALISTS 1958-59
CHAMPIONS—DIVISION 3(S) 1936-37
RUNNERS-UP—DIVISION 2 1954-55
CHAMPIONS—DIVISION 4 1967-68
RUNNERS-UP—DIVISION 3 1969-70
RUNNERS-UP—DIVISION 2 1973-74
CHAMPIONS—DIVISION 2 1981-82

Chairman
David Evans

Directors
M. A. Aleyan, T. W. Bailey,
R. L. Banks, E. S. Pearson,
D. Pleat, R. J. Smith,
J. R. Smith

Chief Executive
John Smith

Manager
David Pleat

Company Secretary
Graham Mackrell

Commercial Director
Bill Tomlins

President
J. A. C. Bain

Honorary Life Members
J. Richardson
T. Hodgson

Vice Presidents
A. G. Berry FCCA,
C. Bygrave, C. J. Evans,
B. Cole, E. Fountain,
D. W. Graves FCA,
C. Holloway, I. E. Holmes,
L. Leppington,
R. Larkinson,
R. Safranek,
R. Unwin, E. Waller

100 Years On

Welcome to everyone from Watford and Luton to our last home game of our Centenary season. Football must always be looking to the future so I see little purpose in summarising the season's games. Our club is progressing steadily. I anticipate that our work at youth level will produce several players of first team quality and we will continue to trade in the transfer market.

Next season will see further radical innovations by our club. The concept of no away fans must be given the opportunity to succeed. We cannot allow the cancer of hooliganism, although better controlled this season, to have a theatre to erupt in. Supporters will be able to watch exciting top-quality football under cover at the Kenilworth Road end with thankfully better facilities. Companies and wealthier patrons will have the opportunity of comfort and a supreme view from private boxes overlooking the pitch. Behind the Oak Road goal, supporters will view from comfortable seats.

Pitch prejudice

Our new pitch has survived the season comfortably with favourable comment from all but the prejudiced and jealous. Wasn't it good to see "passing" sides like Liverpool, Tottenham and Oxford, adapting instantly to the artificial? This club's foresight you may be sure will be followed but one has to erode the walls of ignorance.

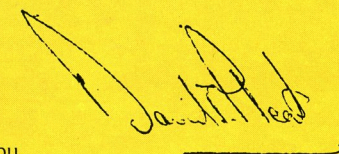
The staff and players have my thanks for another hard-working year. Trevor Hartley has succeeded with the team, John Moore has demanded high standards with the reserves and John Faulkner has enjoyed a good bap-



tism with the kids. Ron Howard has followed up recommendations and set up a solid scouting system. John Sheridan has the vital knowledge required by a top club physiotherapist.

The plus's must multiply again next season—no one can be complacent. We shall need to progress again. We are fortunate to have the continued backing and vision of Mr. Evans and the board. The knowledge and support of our administration and commercial departments will help us achieve our goals.

Finally I thank all our loyal supporters for understanding our aims and appreciating the football. May you all have a smashing summer and come back refreshed.



Thank you.
David Pleat



SEASON TICKETS 86/87

NOW
INCLUDE ALL HOME
CUP MATCHES

FA CUP AND LITTLEWOODS CUP
PLUS NEXT SEASON MEMBERSHIP
TO LUTON TOWN MEMBERS' SCHEME



MAIN STAND

BLOCKS A, B, C, D, E, H	Adults £125
	Juveniles & Senior Citizens £65
BLOCKS F, G (ex Wing Stand)	Adults £90

MAIN STAND ENCLOSURE

ALL BLOCKS	Adults £90
------------	------------

NEW OAK ROAD STAND

1980 seats including Family Section	Adults £90
	Junior Hatters £35
	Juveniles & Senior Citizens £45

KENILWORTH ROAD STAND

COVERED TERRACE SECTIONS	Adults £65
	Juveniles & Senior Citizens £40

REMEMBER 86/87 SEASON TICKETS NOW COVER ALL HOME MATCHES
1st DIVISION • FA CUP • LITTLEWOODS CUP • PLUS HOME CUP REPLAYS

86/87 SEASON TICKETS ON SALE FROM:
NEW TICKET OFFICE TOP OF OAK ROAD

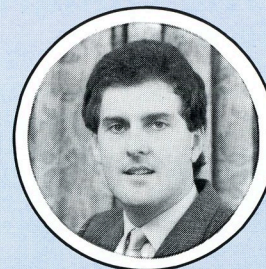
JUNE 2nd to JUNE 27th—Main Stand, Enclosure & new Oak Road Stand

JUNE 2nd (no cut-off date)—Kenilworth Road End, Covered Standing Sections

JUNE 28th to JULY 12th—Bobbies renewal transfer option

JULY 14th (no cut-off date)—General sale. All unclaimed seats.

VISA & ACCESS WELCOMED RING LUTON 30748 for all details.



AN EXCITING SEASON

IT barely seems possible that today brings the curtain down on yet another season, probably one of the most exciting in our club's history. Was it eight months ago that we played our first fixture versus Nottingham Forest on our new artificial surface?

It is at this time that I like to offer thanks to the army of matchday workers without whom it would not be possible to provide the required service to our supporters. First, Gerry Barker, who has joined us this season and co-ordinated our matchday staff. His introduction has proved most valuable in creating a closer liaison with the staff. I must thank Ken Halsey and Fred Haywood together with their gatemens for their sterling efforts. With the introduction of other events on our surface, their work-load has increased considerably.

Training

My thanks go also to Ken Emmerton and his ground stewards. In the light of Bradford and Brussels, their importance has been emphasised and a full training programme has now been introduced. The man with the most unenviable task I feel is Owen Evans who controls our car park areas. He and his staff come under real pressure every home match as everybody has an excuse as to why they should have access to the car park.

Like the gatemens, our Kenilworth Suite stewards, controlled by Mike Williams and Ron Knight, have had an additional burden placed upon them this season and have responded magnificently.

I would like to thank our supporters for being patient during difficult time, but I am sure that they all appreciate the difficulties that operating at Kenilworth Road place upon the running of an efficient organisation.

Have a good close season and I look forward to seeing you next August.

Finally to the two "supporters" who sit behind me at the back of the directors box—have you ever considered going to Sainsburys on Saturday afternoons!

Graham Mackrell
Company Secretary

Executive members

- ★ ANACHEM LIMITED
- ★ MR. W. ASHBURNER
- ★ BEARD & MANNING CATERING SERVICES LTD.
- ★ BEDFORD COMMERCIAL VEHICLES
- ★ BERKLEY ASSOCIATE PRINTERS
- ★ BERVALL MEAD INSURANCE BROKERS LTD.
- ★ W. J. BILLINGTON LTD.
- ★ BLAKEY ENGINEERING CO LTD.
- ★ BLUE ARROW plc
- ★ BRENGREEN HOLDINGS plc
- ★ BROAD STREET PRINT
- ★ B.R.I. INVESTMENTS LTD.
- ★ CANVERMOOR plc
- ★ COUNTY MOTORS LTD.
- ★ GARY CHAMBERLAIN WINDOW FASHIONS
- ★ CAPITAL METALWORK LTD.
- ★ DUPONT (UK) LIMITED
- ★ FILMERGRAPHIC PRESS LIMITED
- ★ F. W. PEARCE BUILDERS LTD.
- ★ BRIAN E. HANDSCOMBE Life & Pensions Brokers
- ★ E. W. HUDSON (HOLDINGS) LTD.
- ★ IVOR HOLMES LTD.
- ★ INFORMATION TECHNOLOGY LTD.
- ★ MARK JAMES (SALVAGE) LTD.
- ★ HANS JURGENS (IMPORTERS) LTD.
- ★ JOHN LAING CONSTRUCTION LTD.
- ★ RICHARD C. LARKINSON (CAMBRIDGE) LTD.
- ★ MR. P. LAYCOCK
- ★ LUTON BATHROOM & TILE CENTRE
- ★ LONDON PROVINCIAL CONSTRUCTION LTD.
- ★ LUDLOWS OF LUTON (Industrial Factors) LTD
- ★ MILCUT ENGINEERING LTD.
- ★ NEAHURST LTD.
- ★ D. R. NEWTON
- ★ OPELVALE GROUP
- ★ MR. & MRS. S. PEARSON
- ★ DR. & MRS. G. L. PLESTER
- ★ PRIORY FARM FOODS
- ★ PETERS GRAVES & CO.
- ★ DAVID RAND & CO LTD.
- ★ RICHARDSON & BOTTOMS LTD.
- ★ ROGERS RESIDENTIAL SALES
- ★ RAVENMERE LTD.
- ★ REDBOURNE CONSTRUCTION
- ★ SHAW & KILBURN
- ★ SHOREY'S TRAVEL
- ★ MR. & MRS. D. SHERIDAN
- ★ W.S. TYREMASTERS (Division of West & Sellick Tyres) Ltd.)
- ★ TRITRADE LTD.
- ★ TILDAE INVESTMENTS LTD.
- ★ R. W. UNWIN
- ★ VAUXHALL MOTORS LTD.
- ★ WALLSPAN BEDROOMS
- ★ WEBBEX LIMITED
- ★ YARNSFIELD LTD.

THE FULL ADDRESSES AND SERVICES OF OUR EXECUTIVE MEMBERS CAN BE OBTAINED THROUGH OUR COMMERCIAL OFFICES—LUTON TOWN FOOTBALL CLUB.

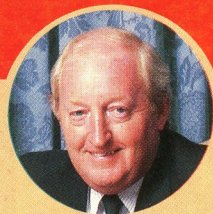
Alpine Press

LEADING THE FIELD

in up-to-the-minute
print technology.

WITH US—
QUALITY
COMES FIRST

Alpine Press,
Station Road,
Kings Langley, Herts.
(09277) 69777



A MESSAGE FROM THE CHAIRMAN Didn't we do well?

Without a shadow of doubt your club has moved forward at breathtaking speed in every aspect. The synthetic surface, which was laid last summer, has been in the opinion of almost everyone an outstanding success. It has allowed the stadium to be used at all times and the quality of play we have seen in all weathers has been of the highest quality.

The positive step taken last year was only a curtain-raiser in that we have had, keeping our fingers crossed, our best season—maybe in our history, but, certainly, for a very long time. And not only in the league position, but in the style, pride and excellence of play which has become our trademark.

You, the fans, have been exemplary in your behaviour and support of the team and this has gone a long way to helping us through the difficult moments as well.

Off the field, the success has been equal in every way. We have been able to manage the financial strategy, in a way that is the envy of most other clubs. We have now laid plans for a "members-only" club for home fans too.

To do this we will be installing computerised vandal-proof entry booths at the Kenilworth Road end which will be for all those of you who wish to stand, still under cover. A new roof will be installed and up-dated refreshment facilities built by the start of the season. This will enable us to turn the Oak Road End into an all-seated area to allow

us to dismantle the Bobbers Stand and replace it with 28 executive boxes.

These boxes will encourage the commercial department to exceed its record-breaking year. In the longer term, we are committed, and determined, to relocate within the Luton area as the board believes that over the next 10, 15 or 20 years, in order to maintain our status as a leading First Division club, the site at Kenilworth Road will, to all intents and purposes, not be a viable proposition.

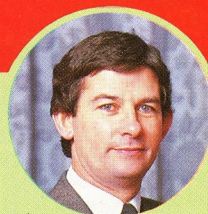
Finally, the spirit that exists was underlined to me by the wonderful turnout for Ricky Hill's testimonial game when our 8,000 hardcore supporters came to honour someone who has given honesty, loyalty and integrity. Thank God we recognised this and repaid Ricky for his achievement.

I look forward to welcoming you back to a new, refurbished and exciting Kenilworth Road next year and I hope you will bring a friend, your wife, girlfriend, children or parents.

David Evans,
Chairman.

STEPPING FORWARD WITH LUTON TO WIN

As we reach the culmination of a successful season for Luton Town on the pitch, things are moving with increasing speed off the pitch. Ten days ago, we received news that gave a boost to the whole future of the club and I'll tell you about that in a moment.



First let me urge you to read carefully the leaflet that was given to you when you entered the ground today. That leaflet gives first notice of a complete "new look" to the relationship between Luton Town and its supporters; in fact it's a positive revolution that will benefit the club, its supporters and the whole of football at Luton Town.

Quite simply, "the club" will be just that from next season, with you, the supporters becoming its members. You'll reap the benefits—and share the responsibilities—of belonging to a first-class, First Division club.

We'll be announcing the details of the new system next week, so watch the press, radio and television for details. Don't miss them, for you'll kick yourself if you're unable to support Luton Town at Kenilworth Road next season.

Cloud dispelled

Just 10 days ago a cloud that's been hanging over the future of Luton Town was finally dispell-

ed when Bedfordshire County Council decided to offer the club adequate compensation for the building of the A505 Luton-Dunstable relief road.

As you may have read, the road will run close to the ground, causing major reconstruction on the south side and having serious implications for our commercial development. Now the County Council have agreed a sum in the region of £2 million in compensation and that means the club's future is assured for a few more years.

It still means that, in the long-term, Kenilworth Road simply will not be adequate for First Division football and discussions will continue with Luton Council with a view to finding a site for a major sports complex with Luton Town as the prime tenant.

But in the meantime we're doing our best to make Kenilworth Road the best home possible for supporters and players alike. We hope you'll like what you see when the new season gets underway in August.

John Smith, Executive Director

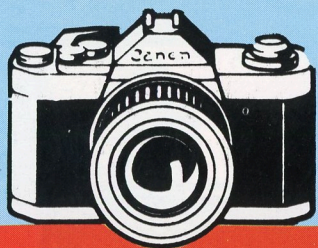


**Refreshes the parts
other beers cannot reach.**

Luton News



**LUTON TOWN COVERAGE
BY BRIAN SWAIN
THURSDAYS 14p**



First Team **ACTION**

Coventry City 1 Luton Town 0
Not even a late flurry of attacks, in which Coventry were just able to hang on to their lead, could disguise a well below-par Town performance at Coventry last Saturday.

Coventry, fighting with all the spirit and desperation to be expected of a relegation-threatened side, scored the only goal of the game in the 47th minute through Nick Pickering and might have added further goals.

After a run of five unbeaten league games, the Town have now failed to win in their last three and have scored only once in 270 minutes—Mike Newell's late equaliser here against Spurs a fortnight ago.

Brief threat

At Highfield Road, it threatened to be the Town's afternoon only briefly at either end of the game. In between, Dave Bennett caused the Town all sorts of problems with his hard-running wing play and Alan Brazil missed a series of chances.

After having the best of the match without penetrating a Town defence admirably marshalled by Steve Foster, Coventry finally broke through in the 47th minute. Pickering picked up a loose ball, surged forward into a striking position and scored with a shot that went in off a post.

Teams: Coventry—Ogrizovic, Borrows, Downs, Bowman, Kilcline, Peake, Bennett, McGrath, Regis, Brazil, Pickering. Sub: Rodger. Luton—Sealey, Johnson (sub M. Stein 69 mins), Thomas, Nicholas, Foster, Donaghy, Hill, Breacker, Harford, Newell, Preece.
Ref: D. Phillips (Barnsley).



ACTION REPLAY from Highfield Road



Out of luck: Mike Newell and Mick Harford were out of luck last Saturday when the Town were beaten at Coventry. Gareth Owen's pictures capture the action from that match.

(Photos: Gareth Owen)





FIRST TEAM PLAYERS

Views

An exciting season . . .

Final success has just escaped the Town this term as the Centenary season, which reached its climax with the exciting FA Cup run, ends with Watford as visitors and Luton still clinging to hopes of a finish in the top six. With a little more luck and better fortune with injuries it could easily have been a trophy-winning year with an appearances at Wembley writes Robert Alexander.

However, some consolation, perhaps, can be taken from the fact that our Cup conquerors Everton appear to be within reach of pulling off an FA Cup-First Division title double. If we have to accept defeat and a disappointment, it is better to accept it honourably and at the hands of such an accomplished team.

There is no doubt the injuries to Emeka Nwajobi, Mick Harford and Brian Stein during the middle of the season were cruel blows at a time when the team appeared to be running into an unstoppable view of form. Marc North and Mark Stein did very well and Mike Newell has made a positive goalscoring impact since his arrival.

Furthermore three Town players have broken through to the ranks of England's under-21 team—Mitchell Thomas, Tim Breacker and Mike Newell; confirmation of sure progress and a real achievement to put alongside the international caps regularly collected by Mal Donaghy with Northern Ireland and Peter Nicholas of Wales.

Ricky Hill, also, has represented his country again at full international level and has made a challenge for a place in England's

World Cup squad, along with Mick Harford and former England centre-half Steve Foster, who have both displayed the form to earn Press recommendations to Bobby Robson this season.

Mal Donaghy Rob Johnson



Mick Harford Les Sealey

Brian Stein too was playing with international quality until his injury and Les Sealey, David Preece, Rob Johnson and the rest have all produced consistently fine form in a year when we have challenged for our highest-ever League finish.

"I just wanted to establish myself in the First Division if I could and I was ready to learn and to fight for my place," said Mike Newell. "But it has been better than I could have hoped for me since I arrived at Kenilworth Road. The team has a lot of very good players, really great footballers and it is a real thrill to play for them and with them." And so say all of us! Well played Luton.

Robzmoyle
sapsworth
GLAZING & DECORATING
SPECIALISTS

Glazing Repairs and Glass Supplies
Patio Door and Window Installations
Double Glazing (Secondary and Sealed Units)
Interiors and Exterior Decorators

For Domestic and Commercial enquiries contact
Luton 573025/597505
For 24 hour Emergency Service contact Dunstable 666665
J. Sapsworth Ltd., 92 Marsh Road, Luton, Beds LU3 2NL

Club News

World Cup Draw

May we remind all supporters who still have tickets to sell that the draw takes place on Saturday, May 24th. If anyone who has already sold a book would care to help the club by selling a further book they can obtain these from our Development Office in Kenilworth Road.

Ricky Hill Testimonial

After the great success of the dinner at the Inn on the Park, Ricky's match against Bobby Robson's XI and the golf day at Woburn, please note two further events to be held for Ricky—May 8th: Exhibition Snooker match against Terry Griffiths and Tony Meo at Tiffany's, Dunstable and August 13th: a Sportsman Dinner to be held in the Hatters Club when the guest speaker will be Emllyn Hughes. For further details, contact Tony Lambert on 0442 65490.

Travel Club

Our last away fixture of the season takes us to Maine Road, where we face Manchester City on May 3rd. Our coaches will be departing from the Maple Road car park at 10.00 am and the cost is £6.50. We would like to thank John Laherty who has looked after our members this season on all the journeys.

Match Ball sponsors



We welcome today's match ball sponsor Mr. Bill Clayburn of Robby's Bakery in Luton Arndale Centre. Robby's was established 14 years ago and has been so successful that Bill has opened a coffee shop called the Bandstand in the Arndale.

Programme subscription season 1986-87

The club will be running its very successful programme subscription scheme again this season. The price is as follows:

Homes—£18.00
Aways—£15.00

Homes and Aways—£30.00

All subscriptions include cup matches. Please forward your remittance, payable to Luton Town FC, to the Programme Distributor, Luton Town FC, Dunstable Road, Luton, Beds.

TICKET OFFICE NEWS

On Saturday, May 3rd, we are away to Manchester City in a Canon League Division One fixture, kick-off 3.00 pm. This will be the last game of the season. Entrance for visiting supporters will be via Wippax Street Stand, which is covered. Seats cost £5.00 and standing room £3.50.

Details of all the arrangements for season ticket sales for next season will be found on page 6.

MATCH REFEREE

Dennis Hedges (Oxford)



A joinery works manager, Dennis is married with two boys. He started refereeing in 1963 and progressed through the Oxford Senior, Hellenic and Isthmian Leagues to the Football League. He enjoys all sports, particularly cricket, and folk music. He has been on the line for an FA Charity Shield match.

HOTLINE
Luton (0582)



Office Hours 9 am-5 pm
411622

Stadium Hire: Mike Beevor,
Stadium Sales Manager, 411622

Advertising & Match Sponsorship:
Wendy Greaves, Marketing
Executive, 411622

Souvenirs—Travel—Junior Hatters:
412418

Match Tickets & Match Enquiries:
Bev Tyler, Retail Sales Supervisor,
30748 (24 hr service) 33010

Banqueting & Function Facilities:
Clive Hustwit, Catering Manager,
411526

Promotions Office: John Gornall,
Development Executive



TOP HATTER



Town manager David Pleat has rightly become regarded as one of the most respected managerial talents in football during the last five years and this season completed his eighth year in charge at Kenilworth Road by guiding the team towards a position among the First Division elite. Born in Nottingham in January 1945, he set his heart on a football career and started with England schoolboy and youth caps while with Forest. He joined the Town as a player in 1964, suffered a broken leg soon after, and left for Shrewsbury, Exeter and Peterborough.

A BUSY MAN

Football management is not all the outdoor life, fresh air and invigorating days on the training ground. It also involves long sessions of paperwork, office administration and travel all over the country to watch matches at all levels of the game. And for David Pleat, now a director of Luton Town, this Centenary season has brought a further responsibility in his day to day involvement with the running of the club.

"He is a busy man," said commercial director Bill Tomlins. "He beats us all into the offices in the mornings nine times out of 10 and is always working very hard. But, of course, he does have to be out with the players too and later on takes off early in the afternoons to travel for evening matches up and down the country. It is a busy and hectic lifestyle for David as he now is a club director with an interest in all the aspects of the running of the club as well as the team."

Since taking over at Kenilworth Road in January 1978, David has guided the club from the bottom half of the Second Division into a strong position in the top half of the First and on the way also taken us to the FA Cup semi-finals and quarter-finals in successive seasons. Now he is aiming for an even better season ahead than the one drawing to an end.

Such has been his success, his own life has become entirely concerned with football and football matters as a profession, a hobby and a relaxation as invitations to functions, television work, radio work and responsibilities within the game have grown.

"David seems to thrive on it," said Bill. "His own success is a reflection of the club's success and we are proud to see him gaining so much recognition."





Bill Tomlins, Commercial Director

GOOD LUCK



● **Off to Mexico:** England Manager **Bobby Robson** has been a frequent visitor this season. Best of luck at the World Cup, Bobby!

the TOWN

THE END OF AN ERA FOR OUR ELECTRONIC SCOREBOARD

by Bill Tomlins

Welcome to our final home league match of the season and the end of an era. It is more than appropriate that our match sponsors today should be Wallspan Bedrooms as they were the company behind the electronic scoreboard whose five-year life span at Kenilworth Road will end this afternoon.

It has had an eventful life as a pioneering board in the Football League and the biggest in Europe. Who can forget the early days when, in our over-enthusiasm, we once urged the referee to send a player off or when That's Life caught a marriage proposal beamed all round the ground!

LANDMARK

The scoreboard has been a landmark in many ways. And it has been a great source of revenue thanks to the enterprise and foresight of director Terry Bailey.

Thankfully, it will—I hope, if my current negotiations prove successful—be going to a suitable resting place for its second "life". A place where millions of people will see it in use... Wembley Stadium! Ac-

tually, the board will be between the Stadium and the Wembley Arena flashing out information.

I would like to take this opportunity of thanking all the companies and individuals who have given their support to the club during this Centenary year in sponsorships and also to extend my thanks to all the players for their unflinching efforts to entertain on and off the pitch.

SPONSORS

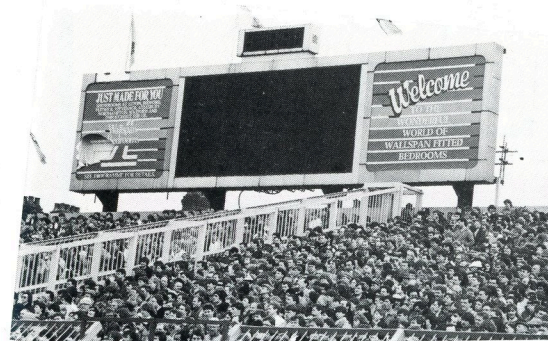
Finally, a very warm welcome to today's match sponsors Wallspan Bedrooms and executive sponsors Beechill Marketing. Wallspan chairman and managing director Terry Bailey needs little introduction. Wallspan are involved in all forms of sponsorship, including today's pre-match entertainment—the game for the Wallspan Cup.

Beechill is a marketing services company which handles all aspects of advertising and public relations including the design and production of conferences, road shows and videos.

(Photos: Gareth Owen)

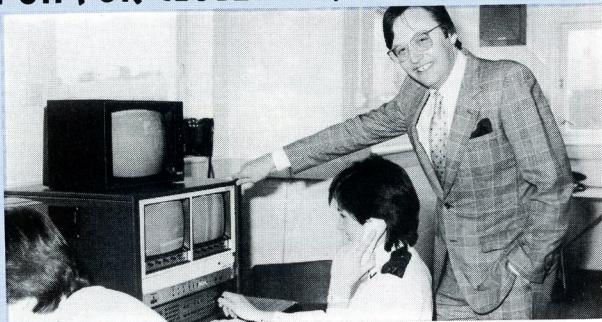


● The old and the new: Last Sunday's hugely-successful American Football Extravagaza with Dan Marino attracted more than 3,000 fans to Kenilworth Road and a strong media corps. The last week has also seen the demolition of the old club offices in Kenilworth Road and the last few splendid flashes from our giant electronic scoreboard.

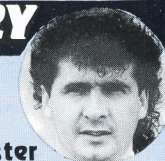


BIG SWITCH-ON FOR CLOSED CIRCUIT TV

● Ministerial turn-on: Home Office Minister David Mellor was at our recent home match with Spurs to see the efficiency of our newly-installed TV system for crowd control. His verdict? "I was very impressed," he said.



CAPTAIN'S DIARY



with
Steve Foster

THANKS-YOU EVERYONE

So, the end of another season at home. I hope we can get just the right sort of result today to make it a great afternoon for Luton at the end of our Centenary season.

The players have worked hard and we have enjoyed great support this season. And everyone at the club has been busy on and off the pitch. Thanks to everyone for all their best wishes on the arrival of our first baby recently.

FUNCTIONS

This week and during the next few weeks we shall be busy attending many functions at end of season dinners and so on. I know Ray Daniel, Gary Cobb and Stacey North were at the Luton Schools FA disco on Thursday and Mike Newell and David Preece went to Luton Town Hall this morning to see eight-seater bikes off to raise money for the Papworth Heart Hospital. Peter Nicholas—who played for Wales last Monday against Uruguay at Wrexham—is due to go to Ampthill Boys Football Club.

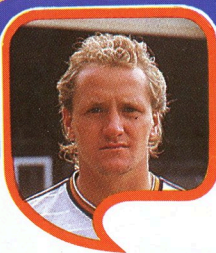
Tomorrow is another special day as it is the Bedford Open Day for their workforce and we shall all be attending to tour the works, meet everyone and have some lunch. Hope you all have a great summer. Thanks for your tremendous support. See you next season.



Junior Hatters



Sponsored by:
THE HERALD NEWSPAPER
and CHILTERN RADIO



**Don't forget to renew
your membership**

Our first season playing football on our artificial pitch has been a good one. Liverpool soon adapted to playing on it and looked as much at home as we do!

This is to remind all you Junior Hatters that your membership expires on May 31st. You can renew your membership from June 1st, the price is only £1 a year. New members are always welcome.

Members have a chance to be the team's mascot for home matches or to be one of four escorts. A full replica kit in the Town's colours for each lucky member whose name is drawn from the

mascot and escorts' draw each week during the season.

Today we welcome our neighbours Watford to Kenilworth Road. Some Junior Hatters will remember we played Junior Hornets in our Centenary Celebration.

In the near future we hope to have a return game with them and may be this will be an annual event.

Peter Nicholas

ESCORTS

MASCOT

ESCORTS



Jamie Hughes



Anthony Greenwood



James Lindner



Michael Taylor



Teresa Harrington

Bedfordshire
Bottled Gases
bbg

**BREWERS HILL ROAD
DUNSTABLE, BEDS**

DUNSTABLE (0582) 600858

(24 HR ANSWERING SERVICE)

**PHONE BEFORE FOUR—
NEXT DAY AT YOUR DOOR**

**UNBEATABLE SERVICE
FOR CYLINDER REFILL DELIVERIES**

Specialists in Central Heating run by L.P.G. on bulk tanks or cylinders
Main Suppliers for all leading makes of L.P.G. appliances

Today's **MATCH SPONSOR**

With Wallspan
fitted bedrooms,
a good result
is guaranteed.

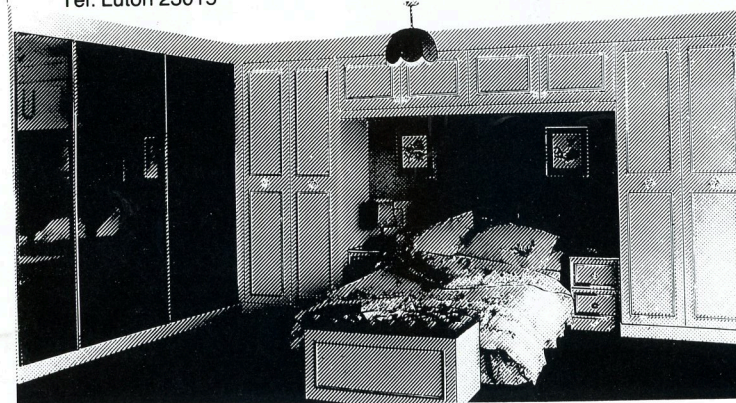
Wallspan fitted bedrooms are great believers in team work. Over the years we have built up a winning team of professionals who work together to produce a product that is out of everyone else's league.

Free design, free fitting, free delivery, and for a limited period interest free credit. Unfortunately we cannot guarantee the result of today's match but we do guarantee our result for a full five years. Come and support our team soon.

**Wallspan
Bedrooms**

Luton Showroom Unit 174 Arndale Centre
Tel: Luton 23015

Throughout the UK



Reserves ACTION REPLAY

GOAL ROUT AGAINST SPURS



(Photos: Gareth Owen)



Luton Town 7 Tottenham 2

Emeka Nwajobi announced his return to good form with four goals as the reserves crushed a young Spurs team 7-2 on Tuesday—our third consecutive victory and third high score in five games, following big wins over Swindon and QPR recently. "It has been a satisfying thing to see the results improve" said coach John Moore who pointed out that several young players have developed well this season. The other scorers in a one-sided contest were Mark Stein, David Oldfield and Ray Daniel. Team: Bolder, Cobb, Grimes, McEvoy, S. North, King, Oldfield, M. Stein, M. North, Nwajobi, Daniel.



FOOTBALL COMBINATION

	P	W	D	L	F	A	Pts
1 West Ham	35	26	5	4	110	51	57
2 Arsenal	33	22	8	3	102	27	52
3 Norwich	36	21	7	8	77	34	49
4 QPR	36	21	5	10	86	51	47
5 Chelsea	36	21	4	11	95	36	46
6 Tottenham	35	20	6	9	84	47	46
7 Watford	36	18	8	10	86	39	44
8 Oxford	37	19	6	12	87	52	44
9 Luton	37	18	7	12	53	36	43
10 Ipswich	35	16	7	12	62	55	39
11 Southampton	36	15	7	14	75	72	37
12 Millwall	30	15	2	13	47	51	32
13 Charlton	33	14	3	16	60	70	31
14 C. Palace	34	11	8	15	53	82	30
15 Birmingham	37	12	4	21	47	87	28
16 Bristol R.	31	11	5	15	51	67	27
17 Brighton	35	7	8	20	34	76	22
18 Reading	34	8	4	22	38	100	20
19 Portsmouth	35	7	7	21	36	56	19
20 Swindon	34	6	5	23	56	107	17
21 Fulham	30	7	2	21	40	77	16
22 Swansea	35	5	2	28	29	100	12

Portsmouth has two points deducted for playing an ineligible player against Crystal Palace.
(up to and including Mon. April 14th)

APPEARANCES and GOALSCORERS

App	Gls	App	Gls
Sealey	5	Tuite	12(5)
Johnson R.	20	Berry	3
Harvey	17(5)	Scott	10
McEvoy	28(2)	Farrell	3(3)
Elliott	12	Black	11(5)
Johnson M.	13(1)	Lewis	1(4)
Cobb	33(4)	Daniel	29
Stein M.	27	Nwajobi	7
Oldfield	36(3)	Parker	21
Grimes	33	Ferguson	1
Dibble	22	North S.	29
Tighe	2(2)	King	13
North M.	22(1)	Newell	4
Preece	1	Scott	10
Breacker	2	Bolder	12
Spink	7	Stein B.	1
Moore	(1)	Cunningham	(1)
James	3	Kennedy	1

FOOTBALL COMBINATION RESULTS

A	Nov	16	Watford <th>4-1</th>	4-1
H	Nov	23	Fulham <th>1-0</th>	1-0
A	Nov	26	Chelsea <th>0-2</th>	0-2
A	Nov	30	Tottenham Hotspur <th>0-3</th>	0-3
H	Dec	14	Arsenal <th>0-2</th>	0-2
A	Dec	21	Bristol Rovers <th>1-1</th>	1-1
A	Jan	4	Arsenal <th>0-3</th>	0-3
H	Jan	11	Charlton Athletic <th>1-0</th>	1-0
A	Jan	21	Ipswich Town <th>2-1</th>	2-1
H	Jan	25	West Ham United <th>3-0</th>	3-0
H	Feb	1	Bristol Rovers <th>2-2</th>	2-2
A	Feb	15	Swansea <th>0-1</th>	0-1
H	Feb	22	Oxford United <th>1-2</th>	1-2
H	Feb	26	Millwall <th>0-1</th>	0-1
H	Mar	3	Birmingham City <th>1-3</th>	1-3
H	Mar	13	Southampton <th>3-2</th>	3-2
A	Mar	22	Norwich City <th>0-1</th>	0-1
H	Mar	25	Watford <th>2-1</th>	2-1
H	Mar	26	Portsmouth <th>2-0</th>	2-0
H	Apr	4	Swindon <th>6-0</th>	6-0
A	Apr	11	Crystal Palace <th>0-0</th>	0-0
A	Apr	14	Fulham <th>2-1</th>	2-1
A	Apr	18	Queens Park Rangers <th>5-0</th>	5-0
H	Apr	22	Tottenham Hotspur <th>7-2</th>	7-2

Youth Team

Season of progress

"We will be keeping on eight of our apprentices for next season—that's a sure sign of our progress" said coach John Faulkner this week as he reflected on his first year in charge of the Town youngsters.

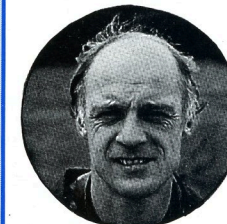
"I've learned a lot—mostly about the inconsistency of young players who are not all physically fully-developed. But we have made a lot of progress and I think we have several good players in the making.

"It has been tough for some lads especially as we are playing in an older age group. Now we are looking forward to the end of season tournaments at Blau Wit and Feyenoord."

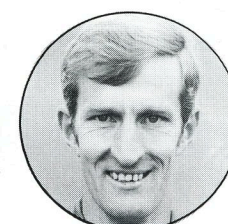
FIXTURE

On April 30th, the Town U-17s and U-16s will play teams from the National School of Soccer Excellence at Vauxhall. Kick-off 5 pm for both games.

COACHING THE YOUNGSTERS



● Youth boss:
John Faulkner



● Reserves boss:
John Moore

SOUTH EAST COUNTIES LEAGUE DIVISION TWO

	P	W	D	L	F	A	Pts
1 Southampton	23	18	3	2	88	30	39
2 Swindon Town	23	15	4	4	60	30	34
3 Wimbledon	23	15	3	5	62	22	33
4 Bournemouth	25	12	5	8	57	47	29
5 Luton Town	25	11	6	8	73	56	28
6 Bristol R.	25	10	6	9	48	46	26
7 Oxford Utd	24	8	6	10	40	51	22
8 Brentford	24	7	7	10	48	59	21
9 Brighton	25	8	4	13	28	53	20
10 Colchester	24	7	5	12	39	55	19
11 Tottenham	23	7	3	13	39	55	17
12 Reading	25	7	3	15	33	70	17
13 Crystal P.	23	6	4	13	53	67	16
14 Southend	24	5	5	14	24	51	15

Up to and including April 21st

Introducing Watford



A warm welcome to our friends and rivals from Watford today for an end-of-season fixture with the additional spice of being a keenly-anticipated local derby. The Hornets have made tremendous strides in the last 10 years and we have enjoyed many tremendous matches against them since our promotion together in 1982.

This season has been something of a transitional one for Watford as manager Graham Taylor has used a large number of players in seeking the strongest blend to steer the club to a safe league position. Recent impressive victories including a double over Arsenal have assured them of a good finish after an exciting FA Cup run in which they reached the quarter-finals before bowing out to Liverpool in a replay.

Players likely to be on duty today:
Tony Coton (goalkeeper)—Born and bred in Birmingham, Tony was signed from Birmingham for £300,000 in 1984 and has now established himself as a challenger for an

England place.

Nigel Gibbs (right-back)—England youth defender Nigel was born in St. Albans and signed as an apprentice in 1982. Now producing impressive form and tipped as a future England under-21 player.

John McClelland (central defender)—Belfast-born John came from Glasgow Rangers for a £225,000 fee in 1984. He is a regular Northern Ireland cap. Has experienced league football in all four home countries.

Lee Sinnott (central defender)—Lee joined from Walsall for £75,000 in 1983, a long-throw specialist.

Steve Terry (central defender)—Born Clapton, Steve signed for Watford as an apprentice in 1978. A powerful aerial player.

Kenny Jackett (midfield)—Regular Welsh international Kenny was born in Watford in 1962, signing as an apprentice in 1978. A firm-tackling crowd favourite.

Brian Talbot (midfield)—Vastly-experienced former Ipswich, Arsenal and England star



Back row, from left: Ian Richardson (now Chester City), Paul Franklin, Steve Terry, Steve Sherwood, Jan Lohman, Malcolm Allen.
Middle row: John Barnes, Brian Talbot, Kenny Jackett, Tony Coton, Luther Blissett, Colin West, David Bardsley.
Front row: John McClelland, Wilf Roston, Neil Smillie, Nigel Gibbs, Graham Taylor (Manager), Les Taylor, Nigel Callaghan, Worrell Sterling, Gary Porter.



Graham Taylor has been the main architect of Watford's great success on the field in recent years during which they have risen from the Fourth Division to the First. After taking Lincoln City to the Fourth Division title in 1976, with a record points total, he joined Watford in June 1977. He promptly led Watford out of the Fourth Division in his first season in charge. Further promotions followed rapidly and by 1982 Watford were in the top flight, finishing as runners-up. A UEFA Cup place followed and an FA Cup final against Everton. In his playing career, Graham was with Grimsby and Lincoln. He collected his FA Coaching Badge at 21, the youngest man to do so.

Brian was born in Ipswich. Signed for Watford from the Gunners in 1985 for £150,000. Current chairman of the PFA.

Malcolm Allen (striker)—Welsh youth international Malcolm signed as an apprentice in 1983 and this season has made several impressive appearances in Watford's front line.

John Barnes (forward)—Winger or striker is a certain member of the England World Cup squad. Born Jamaica, he signed for the Hornets in 1981 and has since become a firm favourite and proven full international.

Nigel Callaghan (winger)—Singapore born Nigel is an England under-21 international with a powerful shot, but wayward form this season has often cost him his first team place.
Worrell Sterling (winger)—Gifted left-winger Worrell is a match-winner on his day. Born Bethnal Green, signed for Watford as an apprentice in 1981.

Colin West (striker)—Born Wallsend, Tyneside, Colin joined Watford from Sunderland for £115,000 in 1985. A powerful, bustling player, he has forced his way back into the side after an indifferent spell.

B. DOHERTY
SKIPHIRE

**34 MOUNT PLEASANT ROAD
LUTON**

Telephone: 574633 & 574799

T. J. ALDRIDGE
Builders



• **ROOFING SPECIALISTS** • **PLUMBING**
• **GENERAL BUILDING REPAIRS** • **PAINTING & DECORATING**
• **BRICKWORK** • **CARPENTRY ELECTRICAL**

302 Selbourne Road, Luton, Beds LU4 8NU

Telephone: 505412-505413

Geoff Souster
MENSWEAR

CLUB 85

"EVENT NOW ON"

SHOREY'S TRAVEL

**LUXURY
COACH HIRE
FOR FOREIGN &
UK EXECUTIVE
COACHES**



COMPETITIVE RATES • FRIENDLY SERVICE • LOCAL BASED

28 Sheepfold Hill, Flitwick, Bedfordshire
Telephone: Flitwick 713289 Silsoe 60694

Princess Packaging Ltd.

SUPPLIERS OF PRINTED POLYTHENE CARRIER BAGS

Tel: Harpenden (05827) 68608

The work of our Company Secretary . . .

Most people associate the title "Company Secretary" with high finance and quotations on the Stock Exchange. I was intrigued to find out what a football club's company secretary was responsible for, and asked Graham Mackrell. He is in charge of the ticket operations, match-day organisation—including organising reserve officials—and the general finances of the club.

After qualifying as an accountant, and practising for a while, he began in football with Bournemouth Football club. He became their Company Secretary in 1976 and joined Luton, after an approach from John Smith, in 1981. He finds the financial management of the club the most difficult part of his job. The costs of running football are constant, with wages, police bills, and so on having to be met regularly, but income varies according to crowd sizes and the amount of sponsorship; this makes budgeting difficult, and Luton operate on a £300,000 p.a. trading loss. This is getting easier, however, par-

ticularly since David Evans became chairman, but Graham still has to advise a tight rein.

Organisation

He says good match day organisation is the most rewarding part of his work. On match days the club employs 200-300 people and it is up to Graham to ensure they all know their jobs and work together.

I asked what he would like to see in future for Luton Town. In the short term, he hoped the "home fans only" scheme worked. This, he thinks, is a way of attracting families to grounds, something he considers vital.

He also thinks those who live in the environs of Kenilworth Road should not be bothered, periodically, by marauding away "fans". In the long term, he wants to see a new stadium suited to the needs of modern soccer—and he wants to see it in Luton.

Gale Waller

Mail Bag

Away ban blues

Dear Sir,
I don't expect a reply to this letter or expect it to be published in your excellent (if expensive) programme because in my experience neither thing happen to critical letters written to football clubs.

Nevertheless, I am wondering how Luton Town can enthuse about the club's growing away support, while it is the club's intention to ban visiting supporters from Kenilworth Road next season.

It would be only right and proper if other clubs banned Luton fans from their grounds. Further, surely, you won't have the gall to continue to operate your Travel Club.

I must stress that I admire most things about Luton Town, particularly their style of football and the friendly atmosphere at Kenilworth Road, but feel that what they contemplate for next season will undermine not only the basic structure of the game which

we all love but the freedom of the normal decent individual.
F. J. Taylor

Editor: Mr. Taylor's points are noted—and his letter published! Do other readers share his views?

Dream come true!

Dear Sir,
Last week I and several colleagues realised a dream when my company hired the Kenilworth Road stadium facilities for an evening. The excitement of running down the tunnel to the roar of 150 people (it sounded like 15,000) and the thrill of hitting the net at the Oak Road end were realisations of boyhood ambitions. To a man, the players in both teams in the "Tek" versus "Graham Ford Builders" confrontation found the evening a tremendous experience.

The excellent catering and bar facilities provided rounded off an enjoyable evening for players and spectators alike, and as a value for money staff social event it could be difficult to surpass. I would cer-

tainly recommend this idea to other local companies, looking to run an interesting and unusual social event. As a therapy treatment for all of us frustrated league footballers the benefits will last for a long time or at least until we finally bore all our friends to death with our exaggerated tales of our skill and expertise that night!

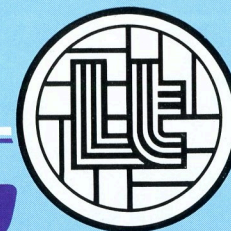
Many thanks to all your staff who helped to make the evening so enjoyable.

R. A. Eade,
Tek Power Tools, Luton

Pen-pal please

Dear Sir,
I have been a Luton fan for six years now. I find it hard to travel to most of the home games as I live in Manchester, but I go to most away games round the North-west and the Midlands. I wonder if any Luton fans would like to write to me as a pen pal who are around 15-18 years old.
Bill Clarke (age 17).

JOHN BAIN
President



Club Comment

The day we averted a disaster

At the end of a season as marvellous as the one we have all enjoyed in the club's Centenary year I am pleased to have this opportunity of giving some credit where it is due for the dramatic change in the club's fortunes in the last 18 months. I myself was fortunate to enjoy nine successful and pleasant years on the board of Luton Town and after 39 years as a fan feel pleased and honoured to be asked to form such judgements.

I have no doubt that our chairman David Evans deserves great credit for the success he achieved in leading the relegation fight last season, lifting morale, creating a marvellous progressive attitude throughout the club and developing a warm and happy family atmosphere. Never in my time as a follower have I felt the club to be held in such high regard.

Ambitious man

I often look back upon a vital day five years ago as hugely important to our present success. I received a telephone call from the then-chairman of Crystal Palace FC asking about David Evans. I said he was a reliable man and was informed that he was to be offered a chance of taking control of Palace.

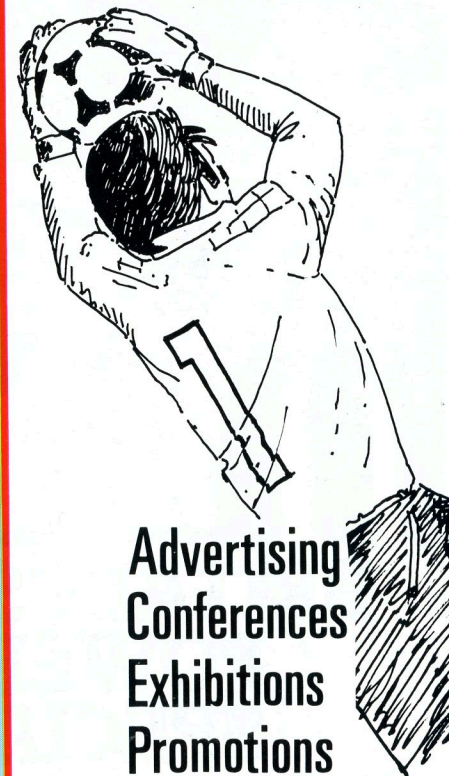
David was ambitious. I knew that. I knew he was keen to have a major interest in a top club—he was then only a director at Kenilworth Road—and to take control. But, when the papers were drawn up, David decided against it.

I feel the decision he made then was a vital one and averted what would have been a disaster in the history of this club—the loss of their chairman who has built Luton Town to its strongest and healthiest state in the last 100 years.

I have been associated with the club throughout all four divisions of the Football League and have been lucky enough to enjoy success in them all with Luton Town. But never has the club been so powerfully led to success. Our chairman's efforts deserve recognition after an exciting Centenary season.

EXECUTIVE SPONSOR

Your in Safe Hands



**Advertising
Conferences
Exhibitions
Promotions**

Contact our **STRIKER Karen**
Tel (0582) 842022



Ver House,
London Road
Markyate,
Herts AL3 8JP

**DID YOU
KNOW THAT
LUTON
PRODUCED**



**BRITAIN'S LEADING
POWER TOOL
SPECIALISTS?**

**Why not take advantage of the fact that
your local power tool specialists are also
Britain's best?**

Tek Power Tools Ltd, Collingdon St, Luton.
Tel no. 417123 Telex. 825115

For a fully comprehensive stock of tools and accessories, expert advice, service and repairs, no one can beat Tek Power Tools for quality, professional attention and value for money.

ViEWS from the **MEDIA**

No stomach for the fight . . .

After such an exciting and dramatic season, it was something of a disappointment for Town fans to see eight points slip away in the last three games. Liverpool stole a narrow victory four days after our home draw with Spurs and Coventry fought their way to a win by the only goal last Saturday. Here is a selection of the Press comment on the last two results, both 1-0 defeats:

Sunday Telegraph: "Whether Coventry City have embarked on yet another famous escape has yet to be seen, but yesterday's fighting victory over Luton, one of Division One's better teams, at least ensured another nail-biting week for Sky Blues fans.

"Luton were one of the side beaten by Coventry in their famous run-in at the end of last season and the Hatters again looked second-best from the start."

Mail on Sunday: "It took Luton until the 88th minute to win their first corner at Highfield

Road yesterday and in truth that statistic is flattering. For David Pleat's side simply did not have the stomach to cope with a Coventry outfit petrified by the prospect of relegation and inspired by rugged performances all over the field.

"The most surprising aspect of a frantic, kick-and-rush affair was that it took Coventry until two minutes into the second half to score through Nick Pickering's blistering run and shot."

Rallied stoutly

The Guardian: "One mistake by the Luton defence at Kenilworth Road last night was enough for Liverpool to regain the leadership of the First Division after a mere 24 hours in second place. Luton rallied stoutly after Johnston's early goal, but came no closer to saving the match than when Foster headed against the bar at the start of the second half."

Anglia

Television

Proud to serve
the
East of England.



Mal Donaghy has been a regular member of the Town defence for derby matches since his arrival at Luton in 1978. This summer he will be off to Mexico for the World Cup finals with Northern Ireland, with whom he played during Wednesday's 2-1 win over Morocco.



THE LUTON TOWN STORY



It is appropriate that our final home visitors to bring down the curtain on a memorable Centenary season at Kenilworth Road are our great friends, rivals and neighbours from down the motorway—Watford. Earlier this season, of course, they helped us to celebrate our 100th birthday in style when they came as our guests for our official Centenary evening. Now, today, they join us again in search of league points at the end of an eventful campaign for both clubs.

Fixtures against the Hornets are always keenly anticipated and we have been fortunate to have enjoyed the best of them in recent years. Naturally, to end a season of Centenary celebrations, we are hoping to enjoy another victory today.

Comments welcomed

This page has reflected the fortunes of meetings between Luton Town and all our visitors this season in a fashion that was aimed at mirroring our long and colourful history. Readers comments on the success or otherwise of this feature page will be welcomed and any constructive suggestions seriously considered for next season.

Club statistician Roger Wash, the soccer "boffin" whose research has created the articles, would particularly be pleased if any fans with interesting printed memorabilia on the club who could loan their items to him for photocopying made contact. Roger Wash is contactable at 55, High Street, Woodditton, Newmarket CB8 9SQ: (Tel: Newmarket 730806).

Finally, the club history THE LUTON TOWN STORY 1885-1985 remains on sale.

Kirk Stephens scored the winner for the Town at Watford on Boxing Day, 1979, when his late goal was the only one of the match. Kirk always enjoyed local derbies and was a great crowd favourite in his time at Kenilworth Road.



Mitchell Thomas scored the Town's first goal and the first senior goal of his career in our 2-1 victory at Vicarage Road earlier this season. Mitchell has forced his way into the England under-21 side with his powerful and skilful play at left-back for Luton this season.



All Our

Watford—friends and rivals from our earliest days

Today we welcome our Hertfordshire neighbours who have been regular visitors to Luton since our earliest days in the Southern League and more recently in the Football League.

Our first League meeting took place at Kenilworth Road on March 28th, 1921, when a solitary goal from Irish international Alan Mathieson secured the points and sent a 12,908 crowd home happy in the knowledge that our better-than-average record over Watford from Southern League days was likely to continue.

Honours, however, tended to be shared evenly that decade and it was not until the thirties that the balance was tipped in our favour.

Some of the Towns favourite scorers figured on the goalscharts during these pre-war derby games. Sid Reid scored in three games in the early 1920's, Andy Rennie always seemed to produce the goods, including a hat-trick in a 4-0 away win in 1929-30, and Joe Payne, although let loose for only one season, managed four goals in two games against the Hornets in our promotion year of 1936-37.

Saviour O'Rourke

Following promotion, our paths did not cross again until 1963-64. It was the last game of that season which still stands out in the minds of many supporters when John O'Rourke beat Watford 'keeper Pat Jennings twice and pulled Luton away from the threat of relegation.

Since Easter 1964, the Town had been second from bottom in Division Three and in spite of the skills of the new recruit, drafted in before Christmas, they looked sure to go down.

New boy O'Rourke looked promising, but it was not until he teamed up with veteran Gordon Turner and winger Ray Whittaker that things really started to happen. From Easter, five wins and a draw in six games hauled the

Yesterdays

Town up the League table and the win over Watford ensured safety.

The match was vital to Watford as well. Seeking promotion, they badly needed to win. The intriguing clash attracted 19,799 fans to witness a convincing Town victory by 2-1 and Champagne flowed in the dressing room afterwards.

Five years later, both teams were fighting for promotion from Division Three. Luton needed to win to stand a chance of going up and the Hornets wanted the points for the championship.

Full-blooded

The biggest league crowd since our First Division days, 24,253, turned up on April 30th, 1969, to

see a full-blooded encounter in which three players were sent off, there was a pitch invasion and Luton won 2-1, courtesy of goals from Ian Buxton, making his first appearance for the Town, and Keith Allen.

Watford won promotion that season and we were to follow shortly afterwards. Malcolm MacDonald, another Town favourite, scored the only goal of the game at Kenilworth Road in 1970-71 following a victory by a similar scoreline at Vicarage Road, when the scorer was Mike Keen, later to join the Hornets.

In recent season, results have been much in the Town's favour and a win today would be the 10th in 14 games.

A summary of our league matches against Watford (Luton score first)

	Home	Away
1920-21	1-0	0-1
1921-22	1-1	1-4
1922-23	0-1	1-2
1923-24	0-0	0-0
1924-25	0-3	1-1
1925-26	5-0	0-2
1926-27	2-2	1-2
1927-28	3-2	0-1
1928-29	2-2	2-3
1929-30	2-0	4-0
1930-31	4-1	0-1
1931-32	0-1	1-3
1932-33	3-2	1-4
1933-34	2-1	1-0
1934-35	2-2	2-2
1935-36	2-1	3-1
1936-37	4-1	3-1
1963-64	2-1	0-2
1964-65	2-4	0-2
1968-69	2-1	0-1
1970-71	1-0	1-0
1971-72	0-0	1-2
1979-80	1-0	1-0
1980-81	1-0	1-0
1981-82	4-1	1-1
1982-83	1-0	2-5
1983-84	1-2	2-1
1984-85	3-2	0-3
1985-86	—	2-1

Overall summary of results:

	P	W	D	L	F	A
Home	28	17	6	5	51	31
Away	29	9	4	16	32	46
Total	57	26	10	21	83	77

Club statistician: Roger Wash

● Away win: Mick Harford and Brian Stein attack the Watford defence during our 2-1 win there in November last year.

VICARAGE ROAD FLASHBACK



First Team

1985-86 SEASON

UPDATE

Canon League Division One

	P	W	D	L	F	A	W	D	L	F	A	Pts
1 Liverpool	39	15	4	1	53	14	8	6	5	28	23	79
2 Everton	38	14	3	2	45	16	10	4	5	33	22	79
3 West Ham	37	14	2	2	44	13	8	4	7	22	19	72
4 Manchester U.	40	11	5	4	31	12	10	4	6	34	23	72
5 Chelsea	38	12	4	3	31	21	8	7	4	24	24	71
6 Sheffield Wed	40	12	6	2	35	23	7	4	9	24	29	67
7 Nottingham F.	40	11	4	5	38	25	7	6	7	29	27	64
8 Luton Town	40	11	6	3	34	13	6	5	9	23	28	62
9 Arsenal	38	12	4	3	25	11	6	4	9	19	29	62
10 Newcastle	40	11	5	4	43	30	5	8	7	21	39	60
11 Tottenham	39	10	2	7	38	20	6	6	8	22	25	56
12 Watford	38	11	4	4	38	20	4	5	10	22	36	54
13 QPR	40	12	3	5	31	15	3	4	13	19	42	52
14 Southampton	38	10	6	4	30	15	2	3	13	14	32	45
15 Manchester C.	39	7	6	7	24	25	4	5	10	17	27	44
16 Aston Villa	40	6	6	8	24	27	3	8	9	22	35	41
17 Coventry City	40	5	5	10	29	34	5	5	10	17	35	40
18 Leicester City	39	6	8	5	33	33	3	4	13	19	37	39
19 Ipswich Town	39	7	5	8	17	22	3	3	13	11	28	38
20 Oxford Utd.	38	5	7	6	29	25	3	5	12	26	50	36
21 Birmingham	40	5	2	13	13	24	3	3	14	17	43	29
22 West Brom	40	3	8	9	19	33	1	3	16	12	51	23

League table as April 23rd, 1986

LEAGUE, and CUP APPEARANCES and GOALSCORERS

	League App	Gls	Milk Cup App	Gls	FA Cup App	Gls
T. Breacker	33(1)		3		7	
A. Dibble	7					
M. Donaghy	39		3		7	
P. Elliott	3(3)					
S. Foster	33	3	3		7	1
A. Grimes	2(1)		(1)		1	
M. Harford	36	19	2		7	3
R. Hill	36	3	3	1	7	2
R. Johnson	14		1		5	
P. Nicholas	39		2		7	
E. Nwajobi	17(1)	4	3	1		
G. Parker	4(4)		1		(1)	
D. Preece	38(1)	2	2	1	7	1
B. Stein	31	14	3	1	3	1
M. Thomas	38	1	2		7	
M. Stein	3(3)				3	2
L. Sealey	33		3		7	
M. North	9(4)	3	1	1	4(1)	1
R. Daniel	2(2)	1	1			
A. King	3				3	
S. North	2					
M. Newell	15	6				
Own goal		1				2

(up to and including April 21st)

Luton Town

	FA	Att	Pos	1
Aug 17 Nottingham Forest	1-1	11,381	—	Dibble
Aug 21 Newcastle United	2-2	21,304	—	Dibble
Aug 24 West Ham United	1-0	14,104	8	Dibble
Aug 27 Arsenal	2-2	10,012	10	Dibble
Aug 31 Aston Villa	1-3	10,524	12	Dibble
Sept 7 Chelsea	1-1	10,720	15	Dibble
Sept 14 Everton	0-2	26,419	16	Dibble
Sept 21 Queens Park Rangers	2-0	9,508	14	Sealey
Sept 24 Sheffield United (MC 2r 1)	2-1	8,943	—	Sealey
Sept 28 Sheffield Wednesday	2-3	17,887	15	Sealey
Oct 1 Ipswich Town	1-0	8,553	14	Sealey
Oct 5 Manchester United	1-1	17,454	14	Sealey
Oct 8 Sheffield Utd (MC 2r 2)	3-1	5,660	—	Sealey
Oct 12 Oxford United	1-1	10,626	14	Sealey
Oct 19 Southampton	4-0	8,876	13	Sealey
Oct 26 Liverpool	2-3	31,488	13	Sealey
Oct 29 Norwich City (MC 3rd)	0-2	8,202	—	Sealey
Nov 2 Birmingham City	2-0	8,550	10	Sealey
Nov 9 Tottenham Hotspur	3-1	19,163	10	Sealey
Nov 16 Coventry City	0-1	9,607	11	Sealey
Nov 23 Watford	2-1	16,107	8	Sealey
Nov 30 Manchester City	2-1	10,096	8	Sealey
Dec 7 Newcastle United	2-0	10,319	7	Sealey
Dec 14 Nottingham Forest	0-2	12,078	8	Sealey
Dec 21 West Ham United	0-0	14,599	8	Sealey
Dec 26 West Bromwich Albion	2-1	12,508	8	Sealey
Dec 28 Ipswich Town	1-1	15,604	8	Sealey
Jan 1 Leicester City	3-1	10,917	8	Sealey
Jan 4 Crystal Palace (FAC3)	2-1	9,886	—	Sealey
Jan 11 Chelsea	0-1	21,102	8	Sealey
Jan 18 Aston Villa	2-0	10,217	7	Sealey
Jan 25 Bristol R. (FAC4)	4-0	12,463	—	Sealey
Feb 1 Arsenal	1-2	22,326	7	Sealey
Feb 8 Southampton	2-1	13,740	6	Sealey
Feb 15 Arsenal (FAC5)	2-2	15,799	—	Sealey
Feb 22 Queens Park Rangers	1-1	16,252	6	Sealey
Mar 1 Sheffield Wednesday	1-0	10,206	6	Sealey
Mar 3 Arsenal (FAC5-replay)	0-0	26,547	—	Sealey
Mar 5 Arsenal (FAC5-replay)	3-0	13,251	—	Sealey
Mar 8 Everton (FAC6)	2-2	15,529	—	Sealey
Mar 12 Everton (FAC6-replay)	0-1	44,264	—	Sealey
Mar 15 Oxford United	1-2	10,633	8	Sealey
Mar 19 Manchester Utd	0-2	33,668	8	Sealey
Mar 22 Everton	2-1	11,039	8	Sealey
Mar 29 Leicester City	0-0	9,912	8	Sealey
April 1 West Bromwich Albion	3-0	9,226	6	Sealey
April 6 Birmingham City	2-0	8,836	5	Sealey
April 12 Tottenham Hotspur	1-1	13,141	6	Sealey
April 16 Liverpool	0-1	15,503	7	Sealey
April 19 Coventry City	0-1	10,146	8	Sealey
April 26 Watford				
May 3 Manchester City				

©Copyright of The Canon League

2	3	4	5	6	7	8	9	10	11	12
Breacker	Thomas	Nicholas	Foster	Donaghy	Hill*	Stein B.1	Harford	Nwajobi	Preece	Parker
Thomas	Grimes	Nicholas	Donaghy	Donaghy	Parker	Stein B.	Harford1	Nwajobi1	Preece	North M.
Johnson R.	Thomas	Nicholas	Elliot	Donaghy	Parker	Stein B.	Harford1	Nwajobi	Preece	North M.
Breacker	Thomas	Nicholas	Parker	Donaghy	Hill	Stein B.1	Harford	Nwajobi1	Preece	Grimes
Breacker	Thomas	Nicholas	Johnson R.*	Donaghy	Hill	Stein B.	Harford1	Nwajobi	Preece*	Parker
Johnson R.	Thomas	Nicholas	Foster	Donaghy	Hill	Stein B.	Harford1	Nwajobi	Preece	Parker
Breacker	Thomas	Nicholas	Foster	Donaghy	Hill*	Stein B.	Harford	Nwajobi	Preece	Nwajobi
Breacker	Thomas	Nicholas	Foster1	Donaghy	Hill	Stein B.	Harford1	Nwajobi	Preece	Nwajobi
Breacker	Thomas	Nicholas	Foster	Donaghy	Hill	Stein B.	Harford1	Nwajobi	Preece	Elliot
Breacker	Thomas	Nicholas	Foster	Donaghy	Hill	Stein B.	Harford2	Nwajobi	Preece	Elliot
Breacker	Thomas	Nicholas	Foster	Donaghy	Hill	Stein B.	Harford	Nwajobi1	Preece	Parker
Breacker	Thomas	Nicholas	Foster	Donaghy	Hill	Stein B.1	North M.*	Nwajobi	Preece	Elliot
Breacker	Thomas	Nicholas	Foster	Donaghy	Hill1	Stein B.	North M.1	Nwajobi	Preece1	Elliot
Breacker	Thomas	Nicholas	Foster	Donaghy	Hill	Stein B.1	Harford	Nwajobi	Preece	North M.
Breacker	Johnson R.	Daniel	Foster1	Donaghy	Hill1	Stein B.3	Harford	Nwajobi1	Preece1*	Daniel1
Breacker	Johnson R.*	Daniel	Foster	Donaghy	Hill	Stein B.	Harford1	Nwajobi	Preece*	Grimes
Breacker	Thomas	Nicholas	Foster	Donaghy	Hill	Stein B.	Harford	Nwajobi	Parker	Grimes
Breacker	Thomas	Nicholas	Foster	Donaghy	Hill1	Stein B.1	Harford1	Nwajobi	Preece	Elliot
Breacker	Thomas	Nicholas	Foster	Donaghy	Hill	Stein B.	Harford	Nwajobi	Preece	Parker
Breacker	Thomas1	Nicholas	Foster	Donaghy	Hill	Stein B.	Harford	Nwajobi	Preece	Daniel +
Breacker	Thomas	Nicholas	Elliot	Donaghy	Hill	Stein B.2	Harford	Nwajobi*	Preece	Daniel
Breacker	Thomas	Nicholas	Foster	Donaghy	Hill	Stein B.	Harford1	King*	Preece	North M.1
Breacker	Thomas	Nicholas	Foster	Donaghy	Parker	Stein B.	Harford	King*	Preece	North M.
Breacker	Thomas	Nicholas	Foster	Donaghy	Hill	Stein B.	Harford1	North M.	Preece	King
Breacker	Thomas	Nicholas	Foster	Donaghy	Hill	Stein B.	Harford1	North M.1	Preece	Johnson R.
Breacker	Thomas	Nicholas	North S.	Donaghy	Hill	Stein B.	Harford	North M.1	Preece	Johnson R.
Breacker	Thomas	Nicholas	Foster	Donaghy	Hill	Stein B.	Harford3	North M.	Preece	King
Breacker	Thomas	Nicholas	Foster	Donaghy	Hill	Stein B.1	Harford	North M.	Preece1	Johnson R.
Breacker	Thomas	Nicholas	Foster	Donaghy	Hill	Stein B.	Newell	North M.	Preece	Daniel
Breacker	Thomas	Nicholas	Foster	Donaghy	Hill	Stein B.1	Newell1	North M.	Grimes	King
Breacker	Thomas	Nicholas	Foster	Donaghy	Hill1	Stein B.	Harford1	North M.1	Preece	King +
Breacker	Thomas	Nicholas	Foster	Donaghy	Hill	Stein B.	Harford1	Newell*	Preece	North M.
Johnson R.	Thomas	Nicholas	Foster	Donaghy	Hill	Stein B.*	Harford1	North M.	Preece	Johnson R.
Johnson R.	Thomas	Nicholas	Foster	Donaghy	Hill	Newell1	Harford	North M.	Preece	Parker
Johnson R.	Thomas	Nicholas	Foster	Donaghy	Hill	Newell1	Harford1	North M.	Preece	Breacker
Johnson R.	Thomas	Nicholas	Foster	Donaghy	Hill	King	Harford	North M.	Preece	Daniel
Johnson R.	Thomas	Nicholas	Foster1	Donaghy	Hill	Stein M.1	Harford	King	Preece	Grimes
Johnson R.	Thomas	Nicholas	Foster	Donaghy	Hill	Stein M.1	Harford1	King*	Preece	North M.
Johnson R.	Thomas	Nicholas	Foster	Donaghy	Hill	Stein M.	Harford	Grimes*	Preece	Daniel
Breacker	Thomas	Nicholas	Foster	Donaghy	Hill	Stein M.*	Harford	Newell	Preece1	North M.
Johnson R.	Thomas	Nicholas	North S.	Donaghy	Hill	Stein M.	Newell	Breacker	Daniel*	Preece
Johnson R.	Thomas	Nicholas	Foster1	Donaghy	Hill	Newell1	Harford	Breacker	Preece	King
Johnson R.	Thomas	Nicholas	Foster	Donaghy	Hill	Newell1	Harford	Breacker	Preece	Stein M.
Johnson R.	Thomas	Nicholas	Foster	Donaghy	Hill1	Newell1	Harford	Breacker	Preece*	Stein M.
Johnson R.	Thomas	Nicholas	Foster	Donaghy	Hill	Newell	Harford2	Breacker	Preece	North M.
Johnson R.	Thomas	Nicholas	Foster	Donaghy	Hill	Stein B.	Harford	Newell1	Preece	Breacker
Johnson R.	Thomas	Nicholas	Foster	Donaghy	Hill	Stein B.*	Harford	Newell	Preece	Breacker
Johnston R.	Thomas	Nicholas	Foster	Donaghy	Hill	Breacker	Harford	Newell	Preece	Stein M.

MC = Milk Cup FAC = FA Cup

*Indicates player substituted

●Substitute used

Home fixtures in bold

Scorers name in bold + Own goal

THERE IS NO SUBSTITUTE.



adidas

THE WORLD'S LARGEST SPORTSWEAR MANUFACTURER

Photos by
Gareth Owen
Photography
Luton 418025Editor:
Robert Alexander

Vauxhall Teamcheck.

Luton Town	Watford
1 Les Sealey	1 Tony Coton
2 Rob Johnson	2 Nigel Gibbs
3 Mitchell Thomas	3 Lee Sinnott
4 Peter Nicholas	4 Brian Talbot
5 Steve Foster	5 Steve Terry
6 Mal Donaghy	6 John McClelland
7 Ricky Hill	7 Nigel Callaghan
8 Brian Stein	8 Malcolm Allen
9 Mick Harford	9 Colin West
10 Mike Newell	10 Kenny Jackett
11 David Preece	11 John Barnes
Sub	Sub
Referee: D. HEDGES (Oxford) Linesmen: R. G. SMITH (Red Flag) B. G. WOOD (Yellow Flag)	



Luton's other capacity gate.

**The Cavalier Estate.
Better. By Design.**

