

F.A. CHALLENGE CUP THIRD ROUND

LUTON TOWN

Saturday, 4th January 1986

Kick-off 3.00 p.m.

Crystal PALACE



50p



hummel
«»

TODAY'S MATCH SPONSOR
MOBILE 
GROUP OF COMPANIES



Aim straight for



Croydons leading GM dealer for over 70 years

Where you'll enjoy a good deal more



**380 LONDON ROAD,
CROYDON, SURREY
Tel: 684 3686**

From Steve's Desk...

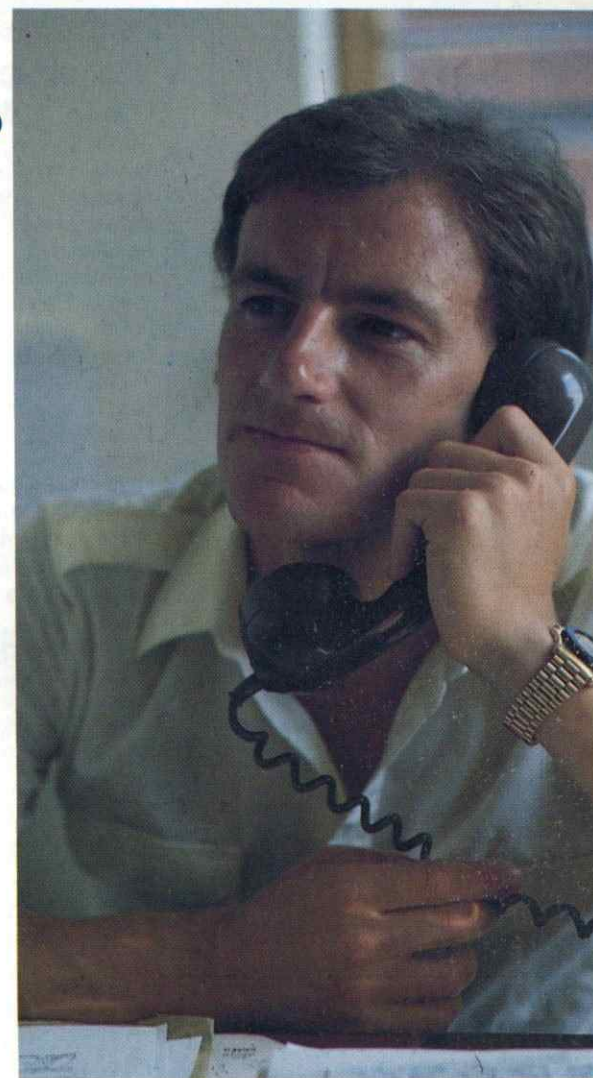
Good Afternoon,

As I know very well from my own involvement in it there is something special about the FA Cup. Here this afternoon and at 30 other grounds this weekend (Charlton play at Selhurst Park tomorrow) there will be that extra bit of spice and tension that goes with the greatest club knock-out competition in the world.

Ian and I together with our players relish today's opportunity and were well content that the Palace should be paired with Luton Town. The Kenilworth Road club are an example to us all in the way they strived, with dignity and on a restricted budget, and eventually succeeded in returning to the 1st Division after being in the back woods for a long time, and then in consolidating their position there. This season they have surprised not a few of the top rank outfits and they hold a position above some of the allegedly 'super' clubs. Clearly then, this afternoon's match is going to provide Palace players, supporters and officials with a very useful yardstick by which we may measure our prospects and pretensions.

It's a pleasure to welcome David Pleat and his Luton team, officials and fans to our ground for today's game. I have long admired David, as a man, as a motivator of players and as a Football manager. Both our sides like to play positive and attractive football with some style to it and are willing to push men forward in an attempt to score goals. All this leads me to think that our match will be a good one to play in and for the fans of both teams to watch.

Enjoy the game, everyone.



*Steve
Coppell*



PRESIDENT:
STANLEY STEPHENSON

CHAIRMAN:
R. G. NOADES

DIRECTORS:
B. COLEMAN
A. S. C. DE'SOUZA
R. M. MARSDEN
C. D. RICHARDS
J. C. M. ROSE
K. A. SINCLAIR

MANAGER:
STEVE COPPELL

ASST. MANAGER:
IAN EVANS

CLUB SECRETARY:
ALAN LEATHER

ACCOUNTS:
MICHAEL HURST

COMMERCIAL MANAGER:
GRAHAM DREW

SALES & MARKETING:
JACKIE PULLINGER

PALACE CLUB:
TERRY BYFIELD

**SHOP/AWAY TRAVEL/
BOX OFFICE:**
BERYL WHITFIELD

BAR/BANQUETING:
TREVOR RODGERS

HEAD GROUNDSMAN:
LEN CHATTERTON

STADIUM MANAGER:
VIC WORRALL

**RESERVE & YOUTH TEAM
COACH:**
ALAN SMITH

CHIEF SCOUT:
JOHN GRIFFIN

**YOUTH DEVELOPMENT
OFFICER:**
PETER PRENTICE

YOUTH DEVELOPMENT:
JOHN WHITFIELD

KIT MANAGER:
MAURICE DREWITT

THERAPIST:
MARTIN HAINES, Dip R.G.R.T.,
MSRGRT, SRRG

**HON. ORTHOPAEDIC
SURGEON:**
PAUL AICHROTH, MD., FRCS

HON. PHYSICIAN:
DR. H. M. J. BOGAERTS

HON. CHAPLAIN & EDITOR:
REV. N. SANDS, MA

**MATCHDAY PROGRAMME
PRODUCTION:**
TERRY BYFIELD

**PHOTOGRAPHY — NEIL
EVERITT, PROGRAMME
MARKETING — PETE KING
PRINT: MAYBANK PRESS**

SELHURST SCENE



JIM CANNON: 550th PALACE APPEARANCE AT BRIGHTON 1st JANUARY 1986

Jim Cannon, Palace's popular captain and central defender, reached another important milestone in his distinguished career at Selhurst Park, because last Wednesday, New Year's Day 1986, Jim made his 550th first-class appearance for our club.

Our table below gives the top 10 appearances for Crystal Palace F.C. and, as you can immediately see, only Terry Long has even got within 100 games of Jim's fine record. We'll feature Jim's career, with photos and more detailed statistics in a later programme for you.



CRYSTAL PALACE F.C. 1905-85: TOP 10 APPEARANCES

	Football/Canon League	Cups (F.A., F.L., F.M. and Milk)	Total
1. Jim Cannon (1973-)	472+	78+	550+
2. Terry Long (1955-73)	442	38	476
3. Albert Harry (1922-34)	410	30	440
4. John Jackson (1965-73)	346	42	388
5. Paul Hinshelwood (1973-83)	276	43	319
6. David Payne (1965-73)	284	33	317
7. Bobby Greener (1922-32)	292	24	316
8. Billy Turner (1928-36)	281	21	302
9. George Clarke (1926-34)	275	25	300
10. Josh Johnson (1907-15)	276*	19	295

*All in Southern League.

†Correct to 1.1.1986.

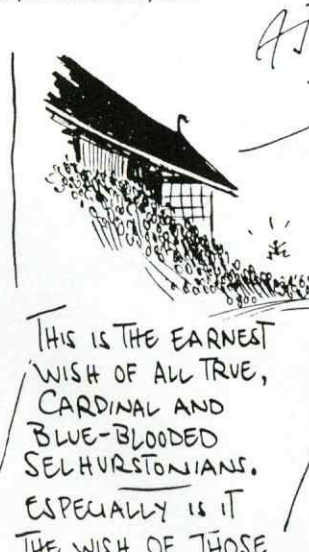


NO, NO,
GENTLE READER

← THIS IS NOT
ANOTHER
CAPTURE BY
MANAGER
BROMILOW
— MERELY
THE SPIRIT OF
THE NEW YEAR!



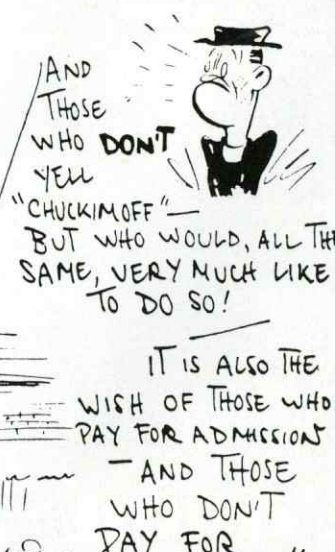
MAY 1936 BE ONE
LONG PARADE OF
SHATTERED
GOAL-NETS
SIDES, OF COURSE!



THIS IS THE EARNEST
WISH OF ALL TRUE,
CARDINAL AND
BLUE-BLOODED
SELHURSTONIANS.
ESPECIALLY IS IT
THE WISH OF THOSE



WHO YELL
"CHUCKIMOFF"



AND
THOSE
WHO DON'T
YELL
"CHUCKIMOFF"
BUT WHO WOULD, ALL THE
SAME, VERY MUCH LIKE
TO DO SO!

IT IS ALSO THE
WISH OF THOSE WHO
PAY FOR ADMISSION
— AND THOSE
WHO DON'T
PAY FOR
ADMISSION!!

PALACE'S THIRD ROUND F.A. CUP TIES 1975-85

Season	Opponents	Venue	Score	Palace Scorers	Round
1975-76	Scarborough	a	2-1	P. Taylor, I. Evans	Eliminated Semi-final
1976-77	Liverpool	a	0-0		
	Liverpool — replay	h	2-3	P. Hinshelwood, Graham Chatterton	3
1977-78	Hartlepool United	a	1-2	Walsh	3
1978-79	Middlesbrough	a	1-1	Sansom	
	Middlesbrough — replay	h	1-0		5
1979-80	Swansea City	a	2-2	Kember, Walsh	
	Swansea City — replay	h	3-3*	P. Hinshelwood, Fenwick, Hilaire	
	Swansea City — 2nd replay	n**	1-2	Boyle	3
1980-81	Manchester City	a	0-4		3
1981-82	Enfield Town	a	3-2	Price, Hilaire 2	6
1982-83	York City	h	2-1	Lovell, Langley	5
1983-84	Leicester City	h	1-0	Gilbert	4
1984-85	Millwall	a	1-1	Mahoney	
	Millwall — replay	h	1-2	Ayllott	3

*Denotes after extra time.

**Denotes neutral ground — played at Cardiff.

MANAGER'S QUOTE OF THE YEAR

From: A London First Division Boss.

"Four defeats in a row was a new experience for me but I have had it all before in the past!"



JANUARY 11th:
PALACE
v
CHARLTON
ATHLETIC



A special seating concession for junior members of the Palace Club has been arranged for our match against Charlton next Saturday.

If you would like to sit in the Arthur Wait Stand on this occasion and, perhaps, bring one or two grown-ups with you, you can do so for £1, plus £3 for each adult, provided you purchase the tickets you require prior to the day of the game, from the Club Shop.

RULES FOR TODAY'S MATCH

If the score after 90 minutes is a draw no extra time will be played.

The replay will take place at Kenilworth Road, Luton, on Tuesday, 7th January, 1986. Kick-off 7.45 p.m.

Tickets for the replay: An announcement will be made over the public address system this afternoon.

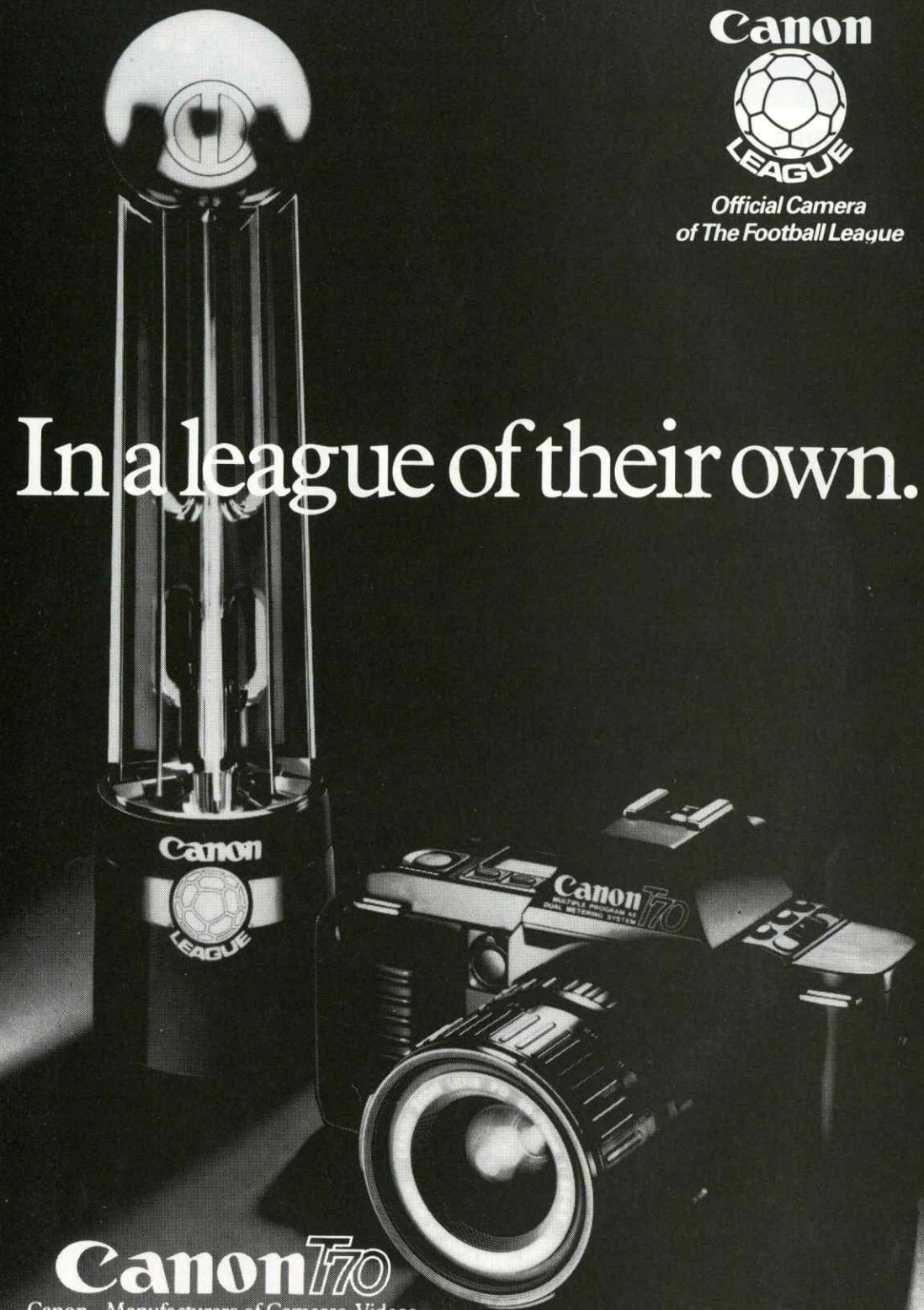
PAUL BRUSH — NOW A PALACE PLAYER



Palace fans will be pleased to know that Paul Brush, our polished left-back, who has been on loan from West Ham since October has now signed for us.

Everyone wishes Paul a speedy recovery from the nasty injury he received in the Boxing Day match against Wimbledon.

Paul will be appearing in our Palace Parade in next Saturday's programme for the match against Charlton Athletic.

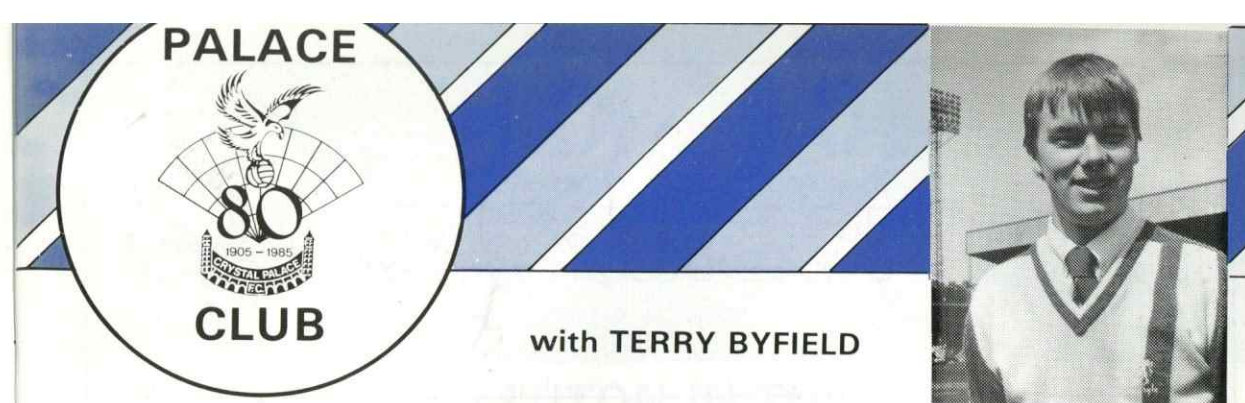


Canon

**Official Camera
 of The Football League**

In a league of their own.

Canon T70
 Canon - Manufacturers of Cameras, Videos,
 Calculators, Copiers, Computers, Copyphones,
 Typewriters and Micrographics.



with **TERRY BYFIELD**



Meet The Mascots . . . Past and Present

In the picture is our mascot for the match against Shrewsbury. In the middle is Fiona Parkin and she enjoyed her day even if the afternoon was not such a success on the pitch. We have two mascots for our Cup match this afternoon. Stefan Rose is six and a half years old and attends Breaside School in Bromley. He has hardly missed a home game since he started supporting Palace three years ago. His favourite players is Alan Irvine. The other mascot is Jonathan Thompson, 14 years of age and attends Langley Park School for Boys. Is a Palace Club Member and has been mascot on a couple of previous matches.



Jonathan Thompson



Stefan Rose

FA CUP QUIZ



Here are some testing questions on our FA Cup matches of recent years, the answers are at the bottom of the page:-

- In which season did we reach the semi-final of the FA Cup as a 3rd Division side.
- Which opponents in this Cup run did these two Palace stalwards represent against us.
- Was the attendance for our 6th round match at Roker Park against Sunderland.
- Who scored our winning goal in that match. Was it:-
 a) Alan Whittel. b) David Swindlehurst. c) Jim Cannon.



FA Cup quiz answers: a) 1975/76.
 b) Chelsea. c) 50,850. d) Alan Whittel.

JOIN THE PALACE CLUB NOW

If you join the Palace Club you can purchase Season Tickets at prices exclusive to Club Members for certain areas of the ground. These prices are for the last nine home games of the season, the matches include Charlton, Portsmouth, Brighton, Leeds United and Sheffield United all playing here at Selhurst Park in the Canon League Division Two.

The prices for the Members Areas are as follows:-
 As from 11-1-86 v Charlton Athletic 9 games
 Members Stand: Adults £34.50, OAPs + U16s £23.00
 Members Terrace: Adults £19.00, OAPs + U16s £7.50

The tickets and further details are available from the Club Shop 9.30 a.m. - 5.30 p.m.

**DON'T FORGET
 STEVE COPPELLS
 INFORMATION LINE
 771 5311**



MOBILE

GROUP OF COMPANIES

MOBILE GROUP OF COMPANIES wish every success to **CRYSTAL PALACE F.C.** in the Cup and in future games.

The Group are international and national specialists in EXHIBITION DESIGN and CONSTRUCTION, COMMERCIAL FREIGHT and HOUSEHOLD REMOVALS.

Tel: (01) 397 5191

The new, bigger Jetta.



It's more Volkswagen than you think.

Just arrived in our showroom, this 4 door family saloon (available in 5 models) is now wider than ever before, has more rear legroom, a huge 12 gallon petrol tank and the biggest boot of any car on the market.

Come in and try one for size.

**HOLMETHORPE
GARAGE**

Phone 91 68214



The new Jetta.

Your Audi Volkswagen Dealer



CONSULT A SOLICITOR FIRST

Buying or selling a property could be the most important financial decision of your life. Land law is a complicated matter, a detailed understanding of which, requires the knowledge of a qualified expert.

Put the sale or purchase of your home in the hands of a solicitor and be confident in the knowledge that the legal and financial responsibility of dealing with probably your greatest asset has the attention of a legally qualified expert.

For details of our comprehensive conveyancing service and written statement of costs contact:

SANDOMS

Solicitors

226 Rye Lane, Peckham, SE15 Tel: 01-639 7631
14/16 Hanover Park, Peckham SE15 Tel: 01-639 6691/2 & 0650
5 Deptford, High Street, SE8 Tel: 01-691 3435



Past Encounters

BY THE REV. NIGEL SANDS, M.A.



PALACE v LUTON IN THE FA CUP



HAVELOCK



GRIFFITHS



BUTLER

It is well over half a century — fifty seven years to the month to be absolutely precise — since the Palace and Luton were last drawn together in the FA Cup, and if the events of January 1929 are now pretty remote history they will still no doubt evoke memories among some of the older supporters of both clubs, and, for Palace followers at least, the outcome has a certain piquancy about it for it created a record in our annals which remains until the present day.

In the 3rd round of 1928-29 Palace were drawn to play at Luton, who, like ourselves, were one of the stronger teams of the day in the 3rd Division South. This tie took place on a snow covered pitch on Saturday January 12th but, although there had been eight goals in the League match on the same ground two months previously (Luton had won 5-3), there wasn't a single goal to cheer the frozen crowd of 14,200 on this occasion. Both the goalkeepers made exceptional saves, and one in the last minute by Billy Callender from a Luton free-kick was of the very highest quality to keep the scoresheet blank.

Probably neither club rued the prospect of a replay at Selhurst Park with another large gate, and certainly an attendance of 16,200 the following Wednesday afternoon justified their view — even if a few school and office desks or factory benches were strategically vacated!

The replay (also played on snow) proved to be one of those matches where everything goes right for one side while the reverse is true for their hapless opponents. Palace, who at this time certainly favoured a fast, hard-running and direct style, were perhaps more helped by the treacherous, slippery pitch, and it took us only eight minutes to snatch the lead when our ex-Portsmouth inside-right, **Harry Havelock** beat Abbott from close range, and **Havelock** soon increased our

advantage from **Jimmy Wilde's** pass. Wilde himself made a rare appearance on a Palace list of goalscorers with our third in the 20th minute with a shot from fully 30 yards. On the half-hour veteran Bob Greener's neat pass gave **Havelock** his hat-trick and **Len Griffiths** netted a fifth before the break.

Luton's rally after half-time was contained by our defence and with 69 minutes gone **Harold Butler** headed a picture goal from Albert Harry's perfect cross. Just before the final whistle our ex-Guardsman, **Jimmy Hamilton**, came up to head the last goal of an eventful afternoon and that 7-0 victory remains Palace's best performance (statistically speaking, that is) in the FA Cup.

Here are the teams from those games:

Palace Callender, Wetherby, Charlton, Hamilton, Wilde, Greener, Harry, Havelock, Griffiths, Butler, Clarke.

Luton: Abbott, Graham, Harris, Black, Fulton (Clark in replay), Fraser, Daly, Yardley, Rennie, Clark (Woods), Bedford (Dennis).

However, the Palace and Luton have met on one other occasion in the FA Cup and, although that was right back in 1905, I rather think that the 1-0 scoreline in our favour may more accurately reflect today's outcome than the extraordinary happenings recorded above.

The match was a 4th Preliminary round tie and took place up at The Crystal Palace on December 9th 1905 on a quagmire of a pitch. It was a goal scored soon after half-time by experienced and much-travelled striker, Bob Harker, that separated the teams to set up Palace's first epic FA Cup saga against Blackpool in the 1st round proper — details of which may be found on page 19 in our latest 80 Years On feature.

We Welcome Today...



Back Row: Mark Stein, David Preece, Gary Parker, Emeke Nwajobi, Stacey North, Mark North, Ray Daniel, Rob Johnson.
Middle Row: John Moore, Tim Breacker, Les Sealey, Paul Elliott (now Aston Villa), Mick Harford, Andy Dibble, Mitchell Thomas, John Faulkner.
Front Row: Trevor Hartley, Ricky Hill, Mal Donaghy, Steve Foster, David Pleat (Manager), Peter Nicholas, Brian Stein, Ashley Grimes, John Sheridan.

After Luton Town gained the promotion they so thoroughly deserved in 1982 as Second Division champions to return to the top flight after an absence of 22 years, they survived their first two seasons by pretty narrow margins. However, The Hatters asserted their growing maturity and increasingly serious intentions last summer by finishing in 13th place while this season a very fine home record has taken them into the top third of the table.

TIM BREACKER — Powerful midfielder or defender who comes from the St. Neots' area. Made first team debut against Ipswich season 1983/84. Tackles well. Was an influential player in the successful reserve side the season before last. Good attitude with a strong will to win. Expected to press his claims for a regular First Division spot. Aged 20 — 5ft. 11in. tall.

RAY DANIEL — Pacy left-sided midfielder player who signed professional in September 1982. Played junior soccer with Limbury Boys Club and showed outstanding potential with Luton schoolboys. Played in highly successful Luton Town youth side that reached F.A. Youth Cup semi-finals in season 1982/83, in well balanced midfield with colleagues Gary Parker and Tim Breacker. Much is expected of this player as he gains strength to go with his skills.

ANDREW DIBBLE — Luton moved quickly when they knew this 20-year-old giant was seeking First Division football. He had kept goal admirably for Cardiff as they gained promotion from the Third Division and survived a difficult season in the Second Division. An all round sportsman, whose ambition is to keep goal for Wales, for whom he already has Under-21 recognition. Cardiff received £125,000 after a tribunal had decided the fee — Luton rejected Cardiff's £300,000 asking price. Standing over 6ft. with a powerful frame, much is expected of him.

MAL DONAGHY — Left Larne for Luton in the summer of 1978 and has been a credit to football. Fast and athletic, he has developed into a reliable member of the successful Northern Ireland side. Has over 20 caps. Scored eight goals in Luton's record promotion-winning season. Has played full back alongside the centre half and in midfield in an outstanding injury-free career at Luton. Married to Marett, Mal has settled in Luton and is described by Manager Pleat as a 'model Club player', and an 'outstanding example to any young player'. Fine tackler, powerful in the air and deceptively quick.

STEVE FOSTER — A chapter of accidents and a happy ending when former England defender Foster moved to Kenilworth Road to become 'skipper'. He made his name at Brighton, and the distinctive white headband was hanging on the Aston Villa dressing room pegs when Luton hit major defensive problems in October and November. Paul Elliott broke his leg, Micky Droy's Luton career as deputy lasted only

three games before he was also injured, and Stacey North, their next centre half was put out of action by a dislocated hip. The good luck that Luton needed was that Foster was unhappy at Aston Villa following a £200,000 transfer from Brighton the previous season. David Pleat signed the big defender, and rates the deal as one of the best he has ever done. Foster and Mal Donaghy quickly settled into one of the best central defensive partnerships in the First Division.

ASHLEY GRIMES — It was a case of 'second time lucky' for David Pleat when he persuaded Eire international Grimes to move down the motorway from Coventry. He had tried to sign him a year previously from Manchester United. A tough tackling left-sided player from Dublin whose talents will have the opportunity to blossom in Luton's style. His hard working attitude could be a valuable asset as he attempts to erase the memory of mixed fortunes in Bobby Gould's much changed Coventry. A part-exchange deal with Coventry was concluded when Kirk Stephens joined his home town club and Luton handed over £50,000.

MICK HARFORD — David Pleat has always believed that central attackers should hunt in pairs and scoured the country to find a new partner for Brian Stein after Paul Walsh left Luton for Anfield last summer. Oddly, the search ended with a man who had first interested Pleat as a young boy. Harford, born in Sunderland, began his career with Lincoln City and Luton had thought about trying to sign him from the Third Division club. But Newcastle stepped in first and Harford's ability to feed a colleague and to take goals on his own account took him on to Bristol City and Birmingham. Luton paid a club record fee of £250,000 to persuade Ron Saunders to part with the big mobile striker and Harford started to repay the investment immediately with a point-saving goal on his debut in December.

RICKY HILL — Joined Luton from school. Progressed with style and strength to gain respect as one of the finest midfielders in England. Powerful attacker, who can defend with great team responsibility. Played against West Germany and Denmark for England, but a hamstring injury curtailed his season last year. Started rehabilitation by playing games in Sweden for Vasteras. A delight to watch on his day, he possesses great skill for a big man. David Pleat expects him to return to Bobby Robson's attention this season. Now in his mid-20s, Hill has been a loyal clubman, but when his contractual obligations finish at Luton, there could be a chase for his signature.

ROB JOHNSON — An outstanding future was predicted for this Bedford boy when he joined Luton. After consistent displays at reserve level, Rob received a cruel injury whilst playing in a pre-season friendly in Finland. Several months later, he began his recovery after a difficult operation on his badly torn knee ligaments. Having fought his

Luton Town

way back into contention and making his First Division debut against Birmingham City, he suffered a similar injury at Sunderland. Now in the process of reviving his career for a second time, much will depend upon his tremendous determination and willpower aided by the advice and help of physiotherapist, John Sheridan.

PETER NICHOLAS — Welsh international Nicholas feared that his First Division ambitions had been shattered when he moved from Crystal Palace to Arsenal, and then was allowed to leave Highbury to go back to his original club. Born in South Wales, he had been at Palace for eight years, after signing as a schoolboy. Luton boss Pleat was sure that Nicholas was too good for the Second Division and Nicholas jumped at the chance to prove the point when Luton made their bid. He added the extra strength Luton wanted in the central midfield position to compliment the attacking flair of Ricky Hill and David Preece on either side of him.

MARK NORTH — Born in Ware, Hertfordshire, Mark is the original utility player, joining the club in June 1982 as an apprentice goalkeeper, but making the transition to an outfield player in either the central defensive or central striking positions. Mark has yet to make his first team debut for Luton but spent a period on loan to Lincoln City at the end of last season.

STACEY NORTH — Young, powerful, central defender who made an outstanding debut at West Bromwich at the end of the season. Ex-Luton Boys' captain. Possesses a long throw and has England Youth caps to his credit. Shows steady progress and is expected to produce a strong challenge this season. Regular reserve pivot for the last three seasons.

EMEKA NWAJOBI — Powerful, skilful forward player who completed his studies last year when he left Cardiff University with a degree in pharmacy. Played for British Universities and joined Dulwich on leaving University. A tip-off from the same gentleman that led to David Pleat seeing Brian Stein, sent Trevor Hartley, John Moore and the Manager to view Emeke's potential in successive games. Their views were positive, and Nwajobi showed early signs of proving a First Division success. Three first team goals and seven in the reserves were Emeke's early contribution, and much is expected from him.

GARY PARKER — Spotted playing for Oxfordshire Boys at Amptihill. Fine long passes stand Gary in good stead for an excellent future in the game. Has the ability to bring players into the game with imaginative passing. Only 20, he has made several First Division appearances and has stamped his authority. Has fine shot. Made his debut at Manchester United, and did not look out of place. Before joining Luton, he spent some while training with Q.P.R.

DAVID PLEAT (MANAGER)

Returned to Luton in 1974 after playing spells at Shrewsbury, Exeter and Peterborough and a player/manager apprenticeship at Nuneaton. Coached the reserve side for three seasons before being appointed first team coach and taking over managerial reins when Harry Haslam left for Sheffield United in January 1978. At present, the fifth longest serving manager in English football. After narrowly failing to achieve promotion in seasons 1979/80, 1980/81, gained the Championship of the Second Division in season 1981/82 only losing four games that season. Now managing Luton for their fourth successive season in the First Division. He is determined to maintain Luton's status developing the Club despite poor gates and to continue to play attractive football. Was the first recipient of the *Sunday Telegraph* 'Canon' Sportsman of the Year award for season 1982/83. His greatest pleasure has been the achievement of current players Mal Donaghy, Ricky Hill and Brian Stein who developed into international players whilst at Kenilworth Road as did former players Paul Price and Paul Walsh.



FORM GUIDE

Luton Town's results so far this season as follows (all League matches unless stated):

Opponents	Result	Scorers	Crowd
Nottingham Forest (H)	1-1	Stein	11,318
Newcastle United (A)	2-2	Nwajobi, Harford	21,304
West Ham United (A)	1-0	Harford (pen.)	14,104
Arsenal (H)	2-2	Nwajobi, Stein	10,012
Aston Villa (A)	1-3	Stein	10,524
Chelsea (H)	1-1	Harford	10,720
Everton (A)	0-2		26,419
Queens Park Rangers (H)	2-0	Harford, Foster	9,508
Sheffield United (MC) (A)	2-1	Stein, Nwajobi	9,000
Sheffield Wednesday (A)	2-3	Harford (2)	17,887
Ipswich Town (H)	1-0	Nwajobi	8,553
Manchester United (H)	1-1	Stein	17,454
Sheffield United (MC) (H)	3-1	Preece, North, Hill	5,660
Oxford United (A)	1-1	Stein	10,626
Southampton (H)	7-0	Nwajobi, Stein (3, 1 pen.), Hill, Preece, Daniel	8,876
Liverpool (A)	2-3	Foster, Harford	31,488
Norwich City (MC) (H)	0-2		8,202
Birmingham City (H)	2-0	Stein, Harford	8,550
Tottenham Hotspur (A)	3-1	Harford, Stein, Hill	19,163
Coventry City (H)	0-1		9,607
Watford (A)	2-1	Thomas, own goal	16,107
Manchester City (H)	2-1	Stein (2)	10,096
Newcastle United (H)	2-0	Harford, North	10,319
Nottingham Forest (A)	0-2		12,078
West Ham United (H)	0-0		14,599
West Bromwich Albion (A)	2-1	North, Harford	12,508
Ipswich Town (A)	1-1	North	16,155
Leicester City (H)			

DAVID PREECE — Life was getting tough for Luton in November as it became clear the team would have to be strengthened to boost for First Division survival. Manager Pleat has a long history of keeping a close watch on up and coming stars in the lower Divisions and in non-League soccer and that paid dividends in the search for more penetration from the left side of midfield. Preece was attracting attention with some consistent performances for Walsall in the Third Division. The big clubs were beginning to notice the little man's busy effectiveness, but Pleat had completed his homework early. Striker Steve Elliott moved to Walsall in part-exchange in a deal which valued Preece at £150,000 and he rapidly became a firm favourite at Kenilworth Road. He scored on his debut — a winner against Aston Villa.

LES SEALEY — Signed from Coventry City after an ever-present season in their First Division side. An East London boy, Les joined City from school and competed for the goalkeeper's jersey with Jim Blyth for four seasons, before winning the spot. 6ft. tall, and an outstanding worker at his game. Enjoys renovating old cars in his spare time.

BRIAN STEIN — Born in South Africa. Exciting, talented forward. Respected by colleagues and opposition defences. His brilliant form led Bobby Robson to select him for England against France, but an inferior team performance caused widespread criticism and Brian will have to await further chances. Signed from Edgware in October 1977 after David Pleat saw him in an Athenian League game at Borehamwood. Was leading scorer in the First Division in Luton's first season when he broke a bone in his foot against Manchester City. His fast, accurate dribbling and shooting should regain his reputation as one of the best forward players in England. His brother Mark is also a player at the Club, and, like Brian, is a forward who likes scoring goals.

MARK STEIN — Like his elder brother Brian, Mark was born in Cape Town and moved to England whilst still a child. He joined Luton under the Y.T.S. scheme and then signed professional in January 1984. A central striker the diminutive Mark made his first team debut against Everton in April of that year.

MITCHELL THOMAS — Elegant full back who made a big impression when he joined Luton on the Government Youth Opportunities Scheme. Only 20, he has already played regular First Division football from full back position. He has been capped at England Youth level, and made his debut against Manchester United. Local boy from whom much is expected. First came to Luton's attention when coach David Coates took a representative side from the area to a youth tournament in Scotland.

PALACE IN



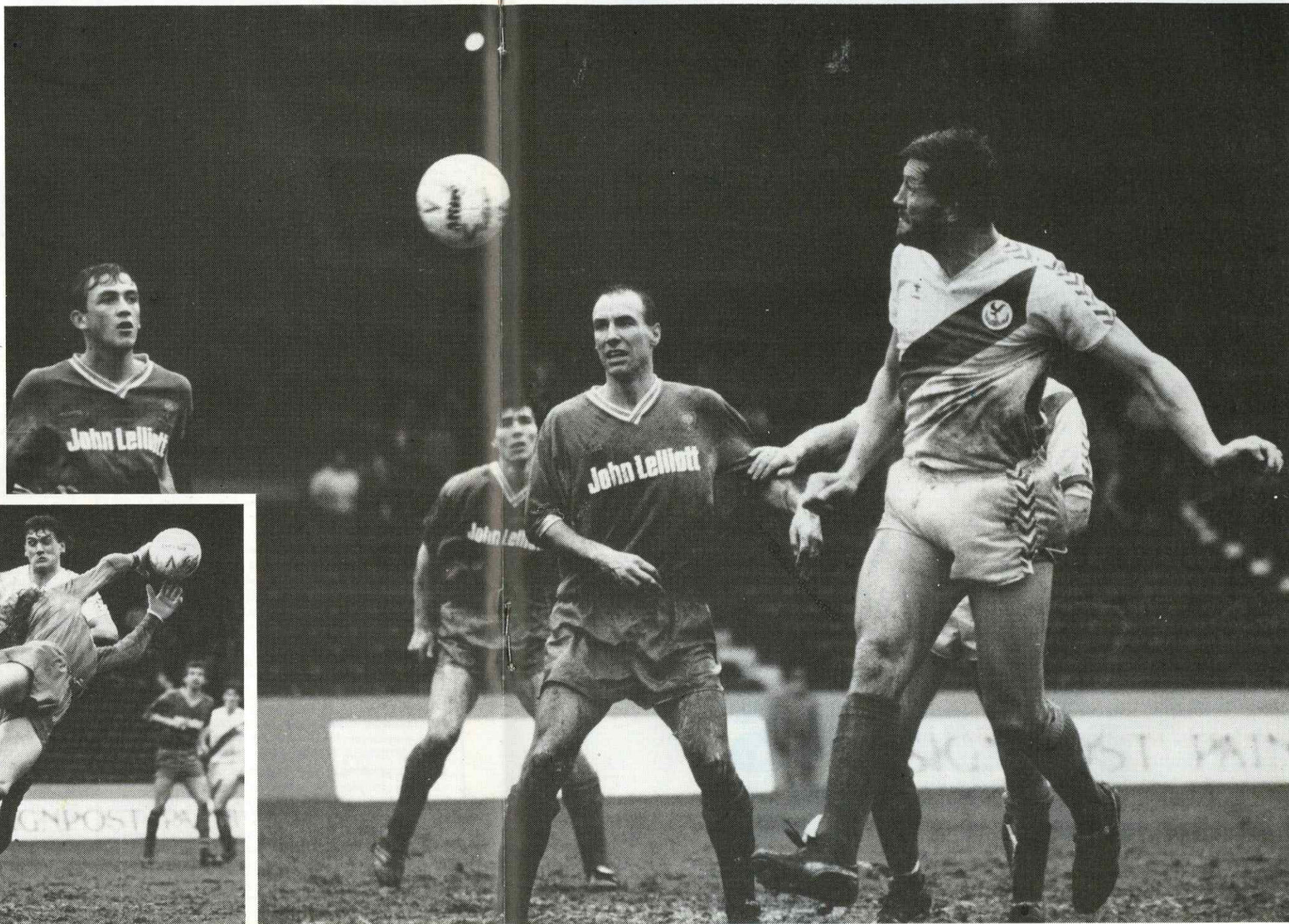
WITH NEIL EVERITT

THE PICTURE

Despite being heavily marked at set-pieces and corners, Micky Droy can still manage to find himself enough room to pop in the odd goal.

On Boxing Day Wimbledon gave him an inch and he gratefully took the yard he needed to score from Alan Irvine's corner (*main picture*).

Although not encouraging good football the muddy conditions did at least provide a soft landing for Wimbledon goalkeeper Dave Beasant when he was called upon to stop a cross reaching Trevor Aylott (*below*).





Discover an even greater Allders of Croydon

With its highly individual style and atmosphere Allders of Croydon offers shoppers an unrivalled choice of merchandise and numerous services.

It is the third largest store in the country and carries a glittering array of names in the fields of fashion for men, women and children; furniture and items for the home and leisure pursuits.

The beautiful perfumery hall, china, glass and crystal rooms, soft furnishing departments and Allders Mall with its little shops and boutiques all help to create a unique and exciting shopping experience . . . one that you will not match anywhere else in the country.

Service for the customer is a number one priority, The Export Bureau, Wedding Gift Service, Kitchen Design Studios, Customer Services Bureau and the Soft Furnishings Department with its own interiors consultant and making up workrooms are just some of the many important specialist contributions to be found in the store.

ALLDERS OF CROYDON

☎ 681 2577 All that a great store should be

PALACE parade

STEVE COPPELL

When we featured Palace boss, Steve Coppel, in our Palace Parade at the start of the season we noted that just as consistency was the hallmark of Steve's game as a player with England and Manchester United, so consistency of performance for his Palace team was now his greatest aim.

'To some degree we have succeeded' reflected The Eagles' boss recently when we were trying to assess the progress that our club has made under his direction since the season opened. 'We have become more reliable as the season has advanced. Ian and I knew at the beginning of things that our squad had the potential to do as well as anybody in this division and our lads quickly proved that assessment true with a very good opening sequence. But then we became rather patchy, capable of reaching the heights, as when we played every bit as well as United when they were here in the Milk Cup, but failing to sustain that level of performance and rather letting ourselves and our fans down in one or two games.

'But since mid-October there has been a much greater resolve about us and, although we have still slipped up sometimes, by and large we have become much more like what Ian and I are aiming for.'

And a place in the top three next May? For this possibility has been voiced around by some fans. 'If we can maintain our performances at this same high level we must be in with as good a chance as anyone' Steve replied. 'We shall need a bit of luck with regard to injuries because we haven't got a really big squad like some of our challengers, but we have to play Portsmouth and Sheffield United here in February and May so it is all extremely open'.

Thanks, Steve, from all of us at The Palace, for providing a team for us of which we can all be proud.



Coppel

**Where in Croydon
can you say
hello to a Viscount,
meet Snoopy, have words
with an Ambassador and
have a magical
conversation with
a Genie?**

The Phoneshop in Alders

British
TELECOM

**Come and see our latest range of phones
British Telecom Phoneshops, 3rd Floor Alders of Croydon.**

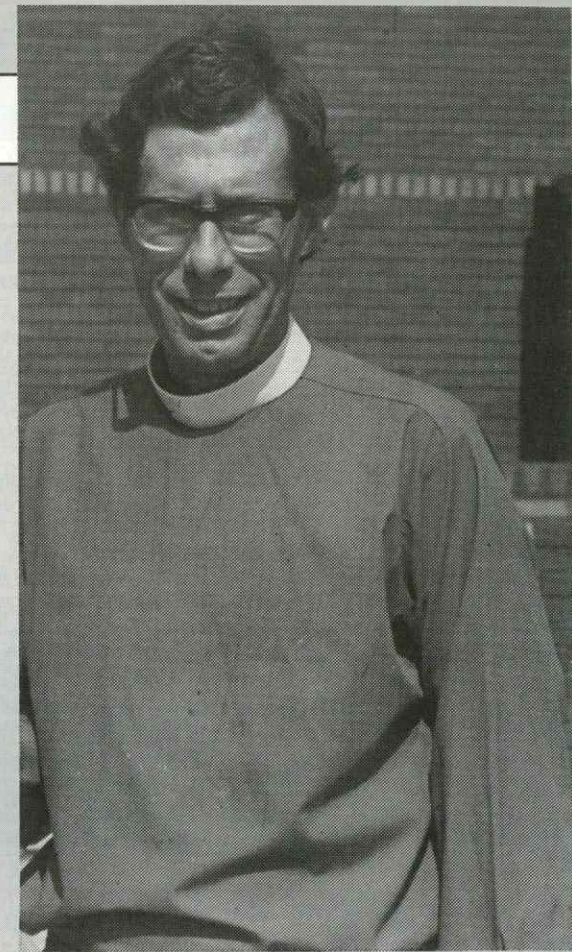
Palace Programme Editor, the Rev
Nigel Sands, writes about

Our Palace Programme 1985-86

I must admit to being modestly pleased with our efforts as 'new boys' on the Palace programme this season, and, to judge by the vast majority of the letters or comments we receive about it, so are most Palace supporters. That is good news to me as the Editor and to the team who help me to produce the programme because we have always said that our aim would be to make this important organ interesting and attractive to our regular fans. After all, it is the loyal, faithful supporters of Crystal Palace F.C. who keep this football club going, and as such they are the most important people to us.

I suppose that really it is a question of knowing your limitations and working within them. All of us at Selhurst Park have had to adjust to the Palace becoming a much more modest outfit than we were ten years ago, for like almost every club outside the top six or eight, the gates at our matches in the mid-80s are about 1/3 of what they were ten years ago. That in turn has an obvious effect on the number of programmes we can sell, because although all clubs are able to sell programmes by subscription to distant fans and at their club shop to enthusiastic collectors who may miss an occasional match, the programme sale is directly related to the size of the attendance at any game.

Thus, comparing today with 1975-76, when I was first learning about the world of football programme production, we now expect to sell something around 3,000 copies per game, while in 1975 it was approaching 10,000. In the light of those figures you can easily see that there is a much slimmer profit margin and that the opportunities for costly use of colour are very limited.



Balance

But in spite of these restraints on what we can offer we are continually casting a critical eye over our programme. Obviously the essence of it all is balance — every edition must have sufficient content to provide interesting reading for each supporter, be he or she eight-years old or eighty, a loyal, long-standing Palace enthusiast or a recent addition to our ranks, possessed of all-consuming interest in tables and charts or much more, concerned with the visual impact of each page in general or Neil Everitt's superb photography in particular. We *try* to please you all — sometimes we are more successful than others!

Difficulties

Finally let me highlight one or two of the difficulties we face. Suppose some news of interest breaks at Selhurst Park early in the week after a home game: if there isn't another fixture here till 10 days later everyone of you will have read all about it in local and national papers and heard on local radio and TV and you won't thank us for making a major feature of it in our magazine, even though it is a newsworthy item.

Thanks for all your letters and interest. Please keep on writing to us: we *want* to know what *you* want in your programme.

PLAYER



SPONSORSHIP

	£25 TRAINING KIT	£25 FOOTBALL BOOTS	£25 TRACKSUITS	£25 PLAYING STRIP	£10 KIT BAG
Steve COPPELL	ANDRÉ DE BRETT CLUB SHOP 653 5584				
Ian EVANS	PETER ELSE BUILDING CONTRACTORS LTD — 658 1531				
Trevor AYLOTT	AWAY SUPPORTERS COACH SECTION				
Phil BARBER	JOHN MACDONALD			PHIL CHAPMAN	JOHN MACDONALD
Jim CANNON	SOUTH NORWOOD GLAZING & DOUBLE GLAZING EXPERTS — 654 1134				
Brian SPARROW	DEE AND JONATHAN THOMPSON				CHAINSAW FANZINE
Ken O'DOHERTY	THE R.B.B. F.C. 4.X.1.	VAL AND IAN FROST OF CATERHAM	THE R.B.B. F.C. 4.X.1.		
Henry HUGHTON	M. ZYSEMIL AND P. O'BRIEN — BRICKWORK CONSULTANTS — 676 0885				
Alan IRVINE	FRED JACKSON				
David LINDSAY	GOLDEN VALLEY DRY CLEANERS				
Gavin NEBBELING	B. OSBORNE (GLASS) CO LTD — 653-2529/2220				
Kevin TAYLOR	JAMES D. SUMNER	THE CORNER SHOP — 771 2301		JOHN MACDONALD	THE CORNER SHOP — 771 2301
Gary STEBBING	BRICK IS BEAUTIFUL — 676 9140				
George WOOD	BOB 'THE CAT' BEVAN — ALAN FIELD MANAGEMENT — 346 7861				
Steve GALLOWAY	STUART DAVIDSON — FILM & VIDEO EDITING — 740 0586				
Andy GRAY	SANDOMS SOLICITORS — 639 7631				
Micky DROY	THE MUSICIANS FROM PENGE				
Tony FINNIGAN	JOHN SMITH AND ROBIN HOWTON				
Tony HAISTEAD	CRYSTALS CARS CROYDON — 684 1115		CRYSTALS EXPRESS HAULAGE — 769 7797		
Steve KETTERIDGE	GRANGE DESIGN — 771 1530				
Ian WRIGHT	AN ANONYMOUS SUPPORTER				
Paul WEBB	HYWAY PRINTING SERVICES 481-1683				
Ken HUGHES	C.P.F.C. VICE-PRESIDENT'S CLUB				
Gary LOCKE	STEWART ANTHONY — VENTILATION BOILERHOUSE MAINTENANCE ENGINEERS TO CRYSTAL PALACE F.C. — 470-1131				
Paul BRUSH	BENNETT OBIESIE UMUNNA				
Andy HIGGINBOTTOM	BENNETT OBIESIE UMUNNA				

**YOU OR YOUR COMPANY CAN STILL SPONSOR
A PLAYER'S FULL KIT AND GET YOUR SIGNED BALL FREE!**

No.1 FOR LOCAL SPORTS COVERAGE

**SOUTH
London Press**

Tuesday & Friday

80 YEARS ON: Palace's First entry into the FA Cup

Programme Editor, the Rev. Nigel Sands, continues his occasional review of Crystal Palace F.C.'s inaugural season of 80 years ago with a look at the club's first sortie into the F.A. Cup competition.

The inaugural entry of Crystal Palace F.C. into the F.A. Cup was remarkably successful for a newly formed club in its opening season and undoubtedly helped to establish its early support among folk from the areas around the Palace site at the top of Sydenham Hill.

Palace's initial F.A. Cup match was in the First Preliminary Round against Clapham Rovers: Clapham had earned quite a pedigree in the early years of the F.A. Cup competition and drew a crowd of some 1,500 to the Palace grounds for the tie. In view of the fact that the Palace club had only been playing for five weeks or so had scarcely begun to settle down as a club or a team, that attendance was huge testimony to the distinguished image of the visitors, but in the event the Palace won easily by 7 goals to nil (still our best cup victory and only once equalled in the 80 years of our club) with our Welsh International **W. M. Watkins** scoring a hat-trick.

Following further successes in the Preliminary Rounds against the Grenadier Guards (3-0), Chelsea (7-1) and Luton (1-0) the Palace reached the old 1st Round Proper (equivalent to today's 3rd Round), and to the delight of their growing band of followers, were drawn against Blackpool from the 2nd Division of the Football League on January 13th 1906.

Modest as this sounds today Blackpool represented the stiffest opposition the Palace were to face in 1905-06 and were clearly tough opponents for a club in its very first season, so it is no surprise that, following Palace's 1-1 draw at Bloomfield Road where both goals came in the opening five minutes, a crowd of 4,000 or so managed to find (or should that be 'take') time for the replay at The Palace the next Wednesday afternoon.

Unfortunately the Palace lost the services of their splendid left-half **Horace Astley** with an injury to his right knee after only a mere 10 minutes play, but we did superbly well and actually took the lead after 35 minutes when our redoubtable skipper **Ted Birnie** netted with a fearsome shot from fully 30 yards.

Blackpool naturally put us under a lot of pressure after this and it was no surprise when Threlfall equalised on the hour, but Palace fought on bravely and held out even after extra-time with a performance that was surely our best of that entire opening season.

The second replay took place at Villa Park the following Monday. Palace were still adjusting to playing without Astley (who was out from January till Easter and only played again for the last three weeks of the season) but still did well enough to convince several of the neutral observers that we should have won, but on this occasion our forwards simply failed to take the chances presented to them. Blackpool's Francis scored after 35 minutes with a long drive but even when we had a second-half penalty we couldn't reply and full-back George Walker shot straight at the Blackpool goalkeeper.

So, the Palace were out and the run was over. But the Palace club and its fans had tasted their first sip of the glory that the F.A. Cup can provide, and they would be back the next year to claim some very big scalps indeed.





PALACE OFF THE PARK

WITH
GRAHAM DREW

"IT'S ALL A MATTER OF TEAMWORK"

EAGLES COMMERCIAL CHIEFS NEW YEAR MESSAGE



On an afternoon when the excitement of the F.A. Cup returns to Selhurst Park every supporter realises that, to win the game, teamwork is essential.

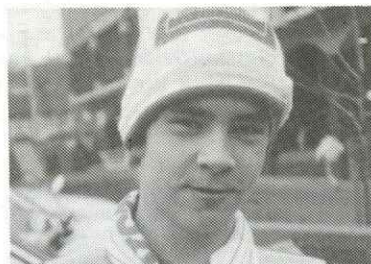
Off the Park that same teamwork is very necessary to ensure the smooth running of every department at the club. The commercial and promotional departments are no exception.

We have, over the past few seasons, been able to harness expertise to enthusiasm and in doing so have produced a commercial set up that is the envy of many of the bigger clubs in the League.

During 1986 we would like to expand even further our past successful record. With that in mind I would be only too pleased to hear from you if you feel that you could assist us in any way. We are always on the lookout for match and matchball sponsors as well as part-time staff and agents for our fund-raising activities. We also now have room for a few more ground advertisers which must surely be, with the signing of a new TV agreement, an excellent investment.

Lastly, I would like to thank all our friends and supporters, who have contributed to our success Off the Park during the past 12 months and wish them 'A Happy New Year'.

COMMERCIAL MANAGER.



TERRY IS PROGRAMME SELLER OF THE MONTH FOR DECEMBER

Young Terry Russell of Penge joined the team at the start of this season and for a new boy has shown excellent resilience to both the bad weather and programme marketing manager Pete King.

He has been given the December 'Club Shop Sponsored' award for a variety of qualities including attendance and sales figures.

Well done, Terry!

MAGAZINE HEADACHES OVERCOME

Some three weeks ago the match-day magazine writers and printers were facing the daunting task of producing five home editions in the space of a 27-day period. This may not appear to be too big a task until one takes into account the problems caused by Christmas holidays and postal delays, etc.

Editor, Nigel Sands and main contributors, Terry Byfield, Pete King and Jackie Pullinger together with club photographer, Neil Everitt, all undertake their magazine work in addition to their full-time positions which makes their achievement all the more credit worthy.

One of the main reasons for the improved style of the magazine this season has been the regular contact and meetings between the Palace editorial staff and the management and printers, Maybank Press of Ilford. All our editions are produced on an individual basis which means that 'hot news' items are being passed to the printers right up to the day before the game thus producing one of the most informative and up-to-date match-day magazines in the League.

The staff have also been greatly assisted by the constructive criticism received from you, the club's supporters, during the course of the season so far and look forward to your comments in the new year.

THAT WAS THE YEAR THAT WAS



Club's maintenance departments heavy workload continues into 1986

During the past year the stadium maintenance staff, under the leadership of stadium manager, Vic Worrall, have undertaken a long list of projects aimed at both improving the safety and facilities at the ground.

The early part of the year saw the crew building the new extension and toilet block adjacent to the Glaziers pub. This work was quickly followed up by repairs to the terracing at the Holmesdale Road end of the stadium and extensive operations in the Member's stand which included bricking-up voids, stairwells and anywhere that rubbish was likely to build up.

New advertising fencing, a complete repaint of the stadium and new accommodation for the club's expanding lottery operation were all taken in their stride and the year closed with an all-out assault on completing the club shop extensions in time for the Christmas rush.

Supporters may also be interested to know that the maintenance department have the responsibility of cleaning the stands and terracing after each game and a glance at the early January stadium fixture list will confirm that this is no mean task.

Seen photographed are members of the full-time crew — Peter England, Terry Jezeph and Vic Worrall.

EMLYN AND EMLYN VISIT SELHURST PARK

PALACE PERSONNEL CONTRIBUTE TO 'SAVE OUR SOCCER' CAMPAIGN

Selhurst Park recently played host to Emlyn Hughes and a BBC TV camera crew who were filming for breakfast times "Save Our Soccer" feature.

Emlyn brought along his young son Emlyn 'Junior' who spent the day assisting Dad with the various interviews that he undertook. The theme of the programme filmed at Selhurst was ground sharing and its impact on the soccer scene. Palace boss, Steve Coppell and club secretary, Alan Leather were on hand to put the Eagles point of view.

Seen in the photograph, Emlyn's senior and junior, prepare to interview Steve Coppell.



NEW 'ARGOS' SCHEME IS A WINNER ...

... LOTTERY AGENTS RECEIVE A CATALOGUE BONUS

The recently introduced 'Argos' Super Saver scheme has been voted an instant success by the club's lottery agents. By now every agent will have received their saver card and a copy of the new Argos bumper catalogue.

The new scheme, arranged by commercial chief, Graham Drew and lottery manager, Len Andrews, gives an added bonus to agents based upon their weekly sales. As Len says: "It gives us an opportunity to reward agents who have increased their sales without affecting their commission or other benefits."

The Argos Super Saver scheme is only one of the many benefits that, as befits the best lottery in Britain, the club gives to its many

successful agents. The lottery boasts the ability to sell and service agents over a huge area in South East London, Kent, Surrey and parts of Sussex. If you would like to jump on the Argos bandwagon and at the same time help yourself to generous commission and the many other benefits, call and see any of our area managers in the Lottery Office after today's game or give us a ring anytime on 771-9502.



KICK OFF TO A GOOD START IN 1986

Palace Marketing Manager
Jackie Pullinger requires:

- Match Sponsors
- Matchball Donors
- Ground Advertisers
- Mascots

PHONE 01-653 4462

for details.

Eagles Lottery Manager
Len Andrews requires:

- Lottery Agents
- Couriers
- Canvassers

PHONE 01-771 9502

for details.

Canon League fixtures are the copyright of The Football League Ltd. and not to be reproduced without permission.

Date	Opponents	F.A.	Pos.	Att.
1986				
AUG 18	Shrewsbury Town	2-0	—	4,295
20	Charlton Athletic (MC1 1L)	2-1	4	4,930
24	Sunderland	1-0	—	7,414
27	Carlisle United	2-2	6	3,080
SEPT 3	Huddersfield Town	2-3	11	6,026
7	Charlton Athletic (MC1 2L)	1-1	—	6,051
14	Charlton Athletic	1-3	13	6,381
21	Fulham City	0-0	14	13,475
28	Northwich	3-4	12	21,507
OCT 1	Manchester United (MC2 1L)	0-1	—	5,226
5	Stoke City	0-2	12	5,243
9	Hull City	0-0	10	26,118
12	Middlesbrough	2-0	8	2,207
16	Manchester United (MC2 2L)	3-2	—	16,538
19	Oldham Athletic	0-1	9	3,764
23	Brighton & H.A. (FMC)	1-3	—	5,408
26	Portsmouth	1-2	10	4,620
NOV 2	West Bromwich A. (FMC)	0-1	9	5,625
9	Blackburn Rovers	2-0	7	13,765
16	Bradford City	3-1	6	6,058
23	Grimsby Town	1-0	5	16,710
30	Leeds United	0-0	6	7,923
DEC 7	Barnsley	0-1	6	15,469
14	Sheriff United	2-1	—	—
22	Shrewsbury Town	1-1	6	—
29	Sunderland	1-3	6	—
JAN 5	Wimbledon	0-2	9	—
12	Brighton & H.A. (FAC3)	—	—	—
19	Luton Town	—	—	—
FEB 2	Charlton Athletic	—	—	—
9	Huddersfield Town	—	—	—
16	F.A. Cup	—	—	—
23	Carlisle United	—	—	—
30	Portsmouth	—	—	—
MAR 6	Blackburn Rovers (5)	—	—	—
13	Millwall	—	—	—
20	Stoke City	—	—	—
27	Middlesbrough (6)	—	—	—
APR 3	Oldham Athletic	—	—	—
10	Fulham	—	—	—
17	Brighton & H.A.	—	—	—
24	Wimbledon	—	—	—
31	Bradford City (SF)	—	—	—
MAY 7	Grimsby Town	—	—	—
14	Leeds United	—	—	—
21	Milk Cup Final	—	—	—
28	Barnsley	—	—	—
4	Sheriff United	—	—	—
11	F.A. Cup Final	—	—	—
18	To be arranged	—	—	—
25	Norwich City	—	—	—



PALACE'S NEXT HOME MATCH . . .
will determine the Supremacy of Selhurst Park
Next Saturday: January 11th 1986
PALACE v CHARLTON ATHLETIC
Kick-off 3.00 p.m.

Try as you may, you won't find a more local derby anywhere!
The outcome of the 2nd Division promotion race could depend upon the outcome of this Palace-Charlton derby. See you here to help cheer the Eagles towards the top.

For a special seating offer for junior Palace Club members please turn to Selhurst Scene on pages 4-5.

NORWICH POSTPONEMENT

Everyone at Selhurst Park was sorry that the big match against Norwich City on December 28th had to be postponed and hope that no severe inconvenience was caused to our supporters. The matchday programme had already been printed and the major features will certainly be produced in future matchday magazines. If it is decided not to use the original production.

Home matches & scores in bold type. † Number of goals scored. p Penalty. + Player substituted. • Substitute used. △ Sent Off. * Own goal.

THAMES MOTOR SERVICES LTD. of Barbican

Proudly Presents
the **NEW**

**THE ALL-NEW RENAULT 5
5-DOOR**

Purchase this new **R5** or any other new Renault for **£99 deposit** (balance over 3yrs.)
or **0% finance** — 1/3 deposit balance over 2yrs.

THAMES MOTOR SERVICES LTD.
7-17 Goswell Road, Barbican, London EC1.
Telephone: 01-250 1575

SALES — SERVICE — PARTS (DELIVERED)

TEAM CHECK

PALACE

WHITE WITH RED/BLUE SASH

1. George Wood
2. Ken O'Doherty
3. Henry Hughton
4. Kevin Taylor
5. Micky Droy
6. Jim Cannon (Capt.)
7. Alan Irvine
8. Ian Wright
9. Trevor Aylott
10. Phil Barber
11. Steve Ketteridge
- 12.

LUTON TOWN

WHITE, NAVY, ORANGE

1. Les Sealey
2. Tim Breacker
3. Mitchell Thomas
4. Peter Nicholas
5. Steve Foster (Capt.)
6. Mal Donaghy
7. Ricky Hill
8. Brian Stein
9. Mick Harford
10. Andy King
11. David Preece
- 12.

Officials

REFEREE: MR. B. T. STEVENS

Brian Stevens is married with two daughters. He began refereeing in 1963 and has officiated at Schoolboy internationals, a full international, F.A. Trophy final and a European Cup-Winners match.

LINESMEN

MR. M. E. PIERCE
Red Flag

MR. D. KEEN
Yellow Flag

Next Matches

at SELHURST PARK



F.A. Cup Third Round
Sunday 5th January
CHARLTON ATHLETIC v
WEST HAM UNITED
Kick-off 3.05 p.m.



Canon League Division 2
Saturday 11th January
CRYSTAL PALACE v
CHARLTON ATHLETIC
Kick-off 3.00 p.m.

TODAY'S MATCHBALL SPONSORS



ALMO LTD.
Commercial Stationers
Telephone 405 3341

Fly Delta's Wide-Ride™ TriStars nonstop from London to Atlanta and on to 100 cities across the U.S.A.

For reservations and information, call (01) 668-0935

Delta gets you there™

