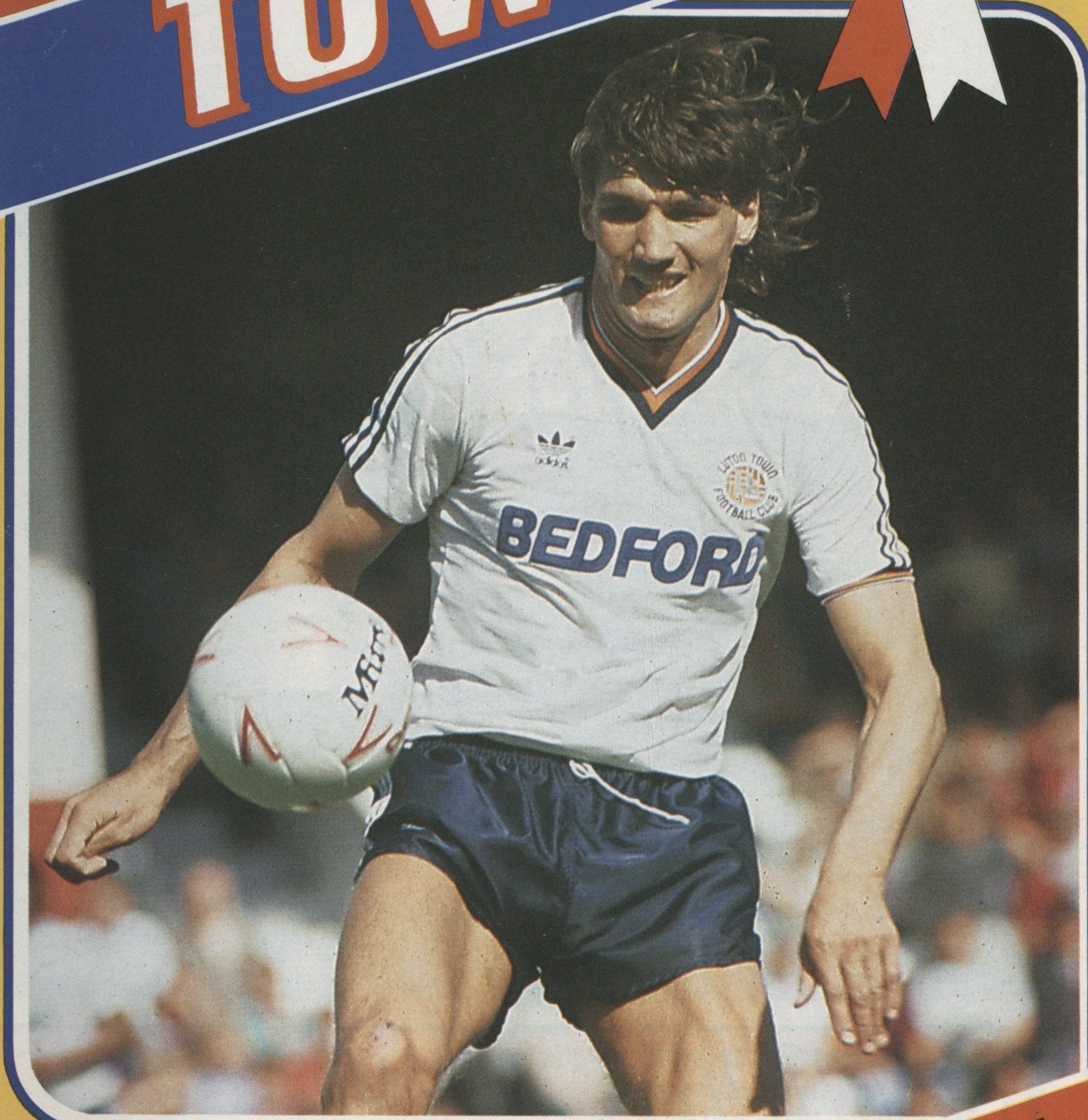


Official Programme
Price £1.00

LUTON TOWN



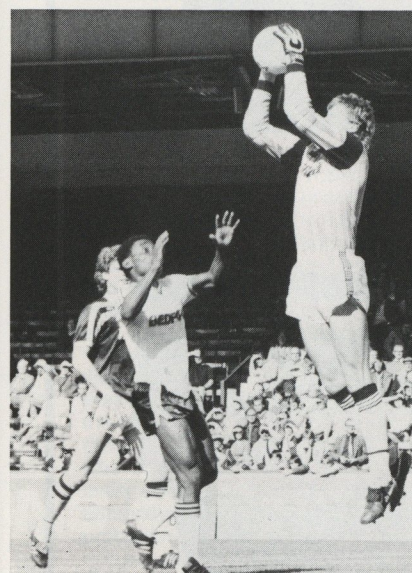
Today's match is sponsored by:
RICHARD LARKINSON
J. SAPSWORTH
MARK JAMES (Salvage) Limited
B & T SPARKS Limited

CANON LEAGUE DIVISION ONE
Luton Town v. Chelsea
Saturday, September 7th, 1985
Kick-off 11.30 a.m.

ACTION REPLAY



Fighting back: Brian Stein (below) cracks his third goal of the season to spark some fightback at Villa Park on Saturday. Emeka Nwajiobi and Tim Breacker (above and left) join in the challenge and (opposite) Emeka is pictured in further action shots at Upton Park where a Mick Harford penalty sealed the points in our first win of the season.



WHA

**W. H. ALLSOP & SONS
(Builders) LTD**

Established 1950

• BUILDING SERVICES • WINDOWS • ROOFING • MINI-SKIP HIRE

153 New Town Street, Luton LU1 5BR. Telephone: (0582) 458000

**Falcon
Holidays**



ATO

ATOL
1337BC

190 Campden Hill Road London W8 7TH

13 seasons of top class competition and we're still top of the holiday league! Try a Falcon Holiday this year and find out why we're unbeatable.

Tel: 01-221 6298

EVEN THE PRICE IS A GOOD LOOKING NUMBER.



BEDFORD'S NEW MIDI.

BEDFORD 
Now the driving force.



LUTON TOWN

Welcome you all to our Centenary Season!

HONOURS

FA CUP FINALISTS 1958-59
CHAMPIONS—DIVISION 3(S) 1936-37
RUNNERS-UP—DIVISION 2 1954-55
CHAMPIONS—DIVISION 4 1967-68
RUNNERS-UP—DIVISION 3 1969-70
RUNNERS-UP—DIVISION 2 1973-74
CHAMPIONS—DIVISION 2 1981-82

Chairman
David Evans

Directors
M. A. Aleyan, T. W. Bailey,
R. L. Banks, E. S. Pearson,
D. Pleat, R. J. Smith,
J. R. Smith

Chief Executive
John Smith

Manager
David Pleat

Company Secretary
Graham Mackrell

Commercial Director
Bill Tomlins

President
J. A. C. Bain

Honorary Life Members
J. Richardson
T. Hodgson

Vice Presidents
A. G. Berry FCCA,
C. Bygrave, C. J. Evans,
B. Cole, E. Fountain,
C. Holloway,
I. E. Holmes,
L. Leppington,
R. Larkinson,
R. Safranek,
R. Unwin, E. Waller

100 Years On

WELCOME to everyone for this morning's game. My memory takes me back to New Years Day morning 1980 when 22 players from Chelsea and Luton played one of the most exciting and skilful games in our recent history. Honours even and six great goals with a marvellous Ricky Hill effort being ruled out for offside. Of those teams, Hill, Donaghy and Stein from Luton and Pates and Bumstead from Chelsea remain—a credit to their determination, standards and loyalty.

There are many similarities between the two clubs. We have both faced financial problems and recovered. We both have progressive radical Chairmen who have clear views on the way we need to project our game.

Chelsea are capable of attracting considerable support and it is to their credit that they stated they will not tolerate "followers of the wrong type." In our last game with Arsenal there was a section behind the Oak Road goal who briefly taunted Charlie Nicholas. Like every other club, I remind you only the best behaviour at all times will do. We are all on probation—please do not swear.

I am pleased with the response to our Centenary season publications. The Luton Town Story 1885-1985 is a well documented book. I fully expect that the many hours of pleasureable recollections will ensure an excellent demand. Mr. Tim Collings and his researchers have worked hard to give our supporters an outstanding collectors' item. The Centenary Club offer is attracting many enquiries and is in line with our policy of making you, our supporters, become part of your club. We have also produced a Club Handbook this



season which gives you a thorough biography of who's who at Kenilworth Road and the news, views and ambitions as we begin our fourth season back in Division One.

On the field we have started steadily in spite of suffering important injuries. Consistency will enable one of several clubs to challenge Man Utd., Spurs, Liverpool, Arsenal, and Everton. Our opponents today led by the canny John Hollins are many people's fancy; Sheffield Wednesday could be there I believe. We are working to make sure that it is our supporters who will have reason to look back on this season with pride.

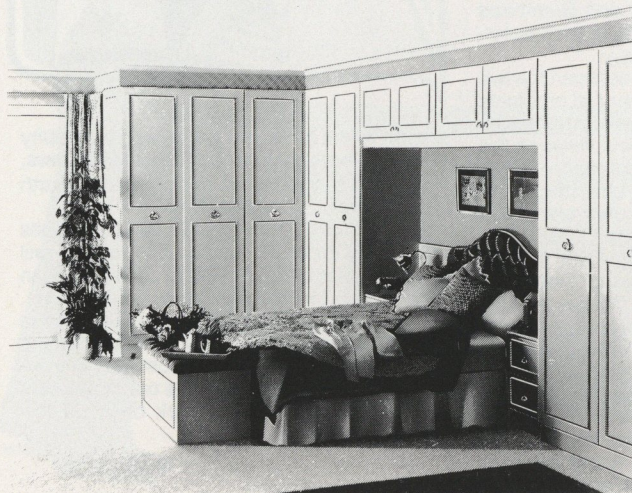
Best wishes

If you want to know the score about fitted bedrooms, look at the scoreboard.

Wallspan Fitted Bedrooms offer you style and elegance at a realistic price.

Our range of fully fitted furniture will grace any home and blend with any decor.

Free design, free delivery, free fitting and a full five year guarantee make Wallspan Fitted Bedrooms the top of the league.



**Wallspan
Bedrooms**
Throughout the UK

Unit 174 Bute Street, Arndale Centre, Luton
Flitwick Factory Showroom and Head Office: 0525 716161

GirlTalk

I USED to enjoy going to Upton Park, in the days when Clyde Best played for West Ham and the fans were "Forever blowing bubbles". But in recent years it has been far less pleasant, with young Alf Garnetts shouting offensive racist chants from the terraces and stands.

In such compact grounds (Luton's is another) players must be able to hear this verbal abuse quite clearly. But our players were too professional at West Ham to allow these chants to interfere with play.

They all worked hard and contributed well to one of the most exciting League games I've seen for a long time. Andy Dibble played exceptionally well to keep us ahead in the second half, but the entire team played skilful, controlled football which was a joy to watch.

The most pleasant part of the afternoon was watching Paul Elliott play with all his old skill and finesse. It was just as if he'd had no time at all away from first team football; and it was gratifying to hear the supportive chants of "Leroy! Leroy!" from the Luton contingent.

A regular feature at our matches for some years—home and away—has been the blonde hair and green anorak of "Diane the Fan". She tells me even her doctor could not cure her fanatacism!

At West Ham she was with her friend, Yvonne, whom she meets at matches. Yvonne is one of a growing band of expatriate Luton supporters. She regularly travels from London to watch the Town. I wonder what is the greatest distance any fan travels regularly to see Luton play at Kenilworth Road?

Diane told me that in the last 12 years the only trouble she had seen at a football match was the incident, last season, when we played Millwall. It seems football matches are generally more peaceful than the media would have us believe.

After the match, our fans were subjected to the sight of the substitute running round the pitch. What I want to know is this: Was Mark North banned from Luton's coach and therefore getting warmed up to run back to Luton?

Gale Waller

Anyone wanting to contribute to Girl Talk please write to:

The Editor,
Luton Town FC,
Kenilworth Road,
Luton.



Executive members

- ★ ANACHEM LIMITED
- ★ MR. W. ASHBURNER
- ★ BEARD & MANNING CATERING SERVICES LTD.
- ★ BEDFORD COMMERCIAL VEHICLES
- ★ BERVEALE MEAD INSURANCE BROKERS LTD.
- ★ W. J. BILLINGTON LTD.
- ★ BLAKEY ENGINEERING CO LTD.
- ★ BLUE ARROW plc
- ★ BRENGREEN HOLDINGS plc
- ★ BROAD STREET PRINT
- ★ B.R.I. INVESTMENTS LTD.
- ★ CANVERMOOR plc
- ★ COUNTY MOTORS LTD.
- ★ GARY CHAMBERLAIN WINDOW FASHIONS
- ★ CAPITAL METALWORK LTD.
- ★ DUPONT (UK) LIMITED
- ★ FILMERGRAPHIC PRESS LIMITED
- ★ F. W. PEARCE BUILDERS LTD.
- ★ BRIAN E. HANDSCOMBE Life & Pension Brokers
- ★ E. W. HUDSON (HOLDINGS) LTD.
- ★ IVOR HOLMES LTD.
- ★ INFORMATION TECHNOLOGY LTD.
- ★ MARK JAMES (SALVAGE) LTD.
- ★ JOHN LAING CONSTRUCTION LTD.
- ★ RICHARD C. LARKINSON (CAMBRIDGE) LTD.
- ★ MR. P. LAYCOCK
- ★ LUTON BATHROOM & TILE CENTRE
- ★ LONDON PROVINCIAL CONSTRUCTION LTD.
- ★ MILCUT ENGINEERING LTD.
- ★ NEAHURST LTD.
- ★ D. R. NEWTON
- ★ OPELVALE GROUP
- ★ MR. & MRS. S. PEARSON
- ★ DR. & MRS. G. L. PLESTER
- ★ PRIORY FARM FOODS
- ★ PETERS GRAVES & CO.
- ★ DAVID RAND & CO LTD.
- ★ RICHARDSON & BOTTOMS LTD.
- ★ ROGERS RESIDENTIAL SALES
- ★ RAVENMERE LTD.
- ★ REDBOURNE CONSTRUCTION
- ★ SHAW & KILBURN
- ★ SHOREY'S TRAVEL
- ★ MR. & MRS. D. SHERIDAN
- ★ W.S. TYREMASTERS (Division of West & Sellick (Tyres) Ltd.)
- ★ TRITRADE LTD.
- ★ TILDAE INVESTMENTS LTD.
- ★ R. W. UNWIN
- ★ VAUXHALL MOTORS LTD.
- ★ WALLSPAN BEDROOMS
- ★ WEBBEX LIMITED
- ★ YARNSFIELD LTD.

THE FULL ADDRESSES AND SERVICES OF OUR EXECUTIVE MEMBERS CAN BE OBTAINED THROUGH OUR COMMERCIAL OFFICES—LUTON TOWN FOOTBALL CLUB.

Alpine Press

LEADING THE FIELD

in up-to-the-minute
print technology

WITH US—
QUALITY
COMES FIRST

Alpine Press,
Station Road,
Kings Langley, Herts.
(09277) 69777

Mail Bag

Write to: The Editor,
Luton Town FC,
Kenilworth Road,
Luton
by Tuesday am.

Thrilling match

Dear Sir,
MY husband and myself have just got back from Newcastle after a two-day short break to see the Town play up there. I would just like to say what a thrilling game we thought it was, the team played some really exciting football and when the first goal was scored the silence in the main stand, where we were, was deafening—except for us two cheering wildly. I have just a small criticism. I would like to have seen the whole team go to the coach load of Luton supporters on the open terrace and applaud them for making the very long journey for a midweek evening match. We may not have the largest army of supporters but they are certainly very loyal. Best of luck for the rest of the season.

Mr. & Mrs. Clark,
Sandy.

Thrilling match

Dear Sir,
I am writing to wish both you and everyone else at the club all the best for the remainder of the season. I think Mr. Pleat has done a very fine job as manager and has done very well in the transfer market as well as in the signing of new contracts and the style of football played. I am certain that a trophy is a real possibility this season.

Nigel Richardson,
Surrey

Delighted

MAY I express my sincere thanks in allowing my grandson to view the team training.

Apart from the enormous delight this will gave him, I hope it will reassure his parents following the unfortunate incidents of the last few weeks.

May I take this opportunity of wishing that the coming season will bring you the success you so richly deserve.

J. Field
Luton

Thanks

Dear Sir,

I would like to thank your staff for their hospitality on the coach when returning from Newcastle last night.

The Bobbers Travel Club coach broke down at Trowell Services and Trevor Hartley, John Sheridan and the players kindly allowed some of our party onto the team coach for the rest of the journey to Luton. This was much appreciated and we would like to thank them for their help and co-operation.

Richard A. Bird
Travel Organiser

Fun with Foster

Dear Sir,

ENCLOSED please find a copy of the letter I have sent to Steve Foster in appreciation of his attendance at the Bobby Robson Soccer Funweek at Hitchin Town Football Club last Friday. The youngsters had looked forward all week to Steve's visit, and he did the occasion proud—even if he was a little

taken aback when asked to say a few words to the assembled masses at the end!

I was very impressed with the excellent P.R. job done by Trevor Hartley and the players when they visited the course at Bedford during the week.

Thanks again for sending Steve across to Hitchin, and best wishes for the season.

Tony Martin
Arlesey, Beds.

Thank you

Dear sir,

THANK you very much indeed for letting me come and watch the team train on Tuesday morning. I really enjoyed my visit—in fact it was the best day of my life. Thank you and the players for the programmes and the autographs.

James Field
Bolton

P.S. Please try and beat Manchester United for me!

Dear Sir,

THANK you for supporting our school fete, with your help we raised over £1,000. Your club was given our public thanks.

Thank you for helping us.

K. Bearpark
St. Dominic's PTA, Harpenden.

Historic moments

Dear Sir,

HAVING seen you on Breakfast Time television a few days ago and hearing that it is the Centenary of Luton Town FC, I am indulging in a bout of nostalgia.

I was born in Luton (69 years ago!) and when I was about five years old I accompanied my grandfather (Charles Green) from his home to the ground (he was at that time Secretary of the Club) and while he chatted to officials I picked daisies on the pitch. I understand this is no longer possible! I must point out that the said daisy picking was not while a game was in progress!

My son, Neil, has been a keen supporter of Luton FC for many years, attending most home games and several "aways", although he now lives in Aylesbury. If the name sounds familiar, I believe he has corresponded with you. My grandfather, who died when my son was a baby would have been delighted with his enthusiasm.

So congratulations to the club, and what about another Cup Final appearance in my declining years?

Mrs. J. Slater,
Middlesex



WORTH GOING OUT NIGHTS FOR

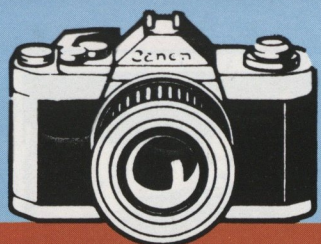
Luton News

SPORT AND MOTORING
TOWN MATCH VERDICT
SUPER-SHOW
BREAKS
B DUCK

THE BEST SPORTS PAGES IN TOWN!

BRIAN SWAIN,
ERIC NORRIS,
DAVID PLEAT,
MARK RICHARDS

THURSDAYS 14p



First Team ACTION

Aston Villa 3 Luton 1

A much-improved second-half performance during which Brian Stein pulled one goal back with a clinical finishing shot after a fine through ball from Tim Breacker could not save us from our first defeat of the season on Saturday. We were caught on the hop by Villa's opening onslaught and found ourselves three-nil down in the first 34 minutes and facing an uphill struggle.

Villa, fielding six teenagers in a team lacking experienced men like Colin Gibson, Allan Evans, Andy Gray and Steve McMahon, stormed into the attack from the start and were too much for our defence, lacking a recognised centre-half, to hold.

Villa went ahead in the second minute through Mark Walters. The second came from Steve Hodge after 16 minutes and the third from Dave Norton after 34 minutes. With Peter Nicholas playing in defence, our midfield was overrun and it was only in isolated breaks that we threatened before the interval.

In the second-half, however, we lifted our game and Stein made the break-through after 54 minutes with his fine goal. Our former England striker then threatened to lead us back into the game by himself with some spectacular runs and a goal that was unluckily disallowed for offside.



ACTION REPLAY from Upton Park



Brian Stein and Mick Harford pictured in the decisive minute at West Ham where Brian was brought down and Mick converted the penalty which secured three points and our first League victory of the season.

(Photos: Gareth Owen)





JOHN SHERIDAN

Views

from the bench

A DEEP love of football led John Sheridan into his present position as physiotherapist to the Town's senior players at Kenilworth Road after his own playing career was ended early in life by an accident. Born in Scotland, but raised in Luton, John joined our current staff in 1978 after previously working with the Bedfordshire Football Association. Today, John gives his views on his vital job at the club.

"One of the most important things to me is the future fitness and health of players. By that, I mean their ability to work and enjoy their lives after they have finished playing. I don't want it on my conscience that someone is walking—or trying to walk—around with osterarthritis at the end of their playing days.

Co-operation

"That is why I am happy with the way things are at Kenilworth Road. We have a superb relationship with the local hospital, the Luton and Dunstable, marvellous co-operation from their specialists, an excellent manager and a unique club doctor. This is all important to me because a player finishes his career at about 33 or 34 and is only one-third of the way through a normal working life.

"It is my job to protect them to make sure they have a full life when they have finished playing. Fortunately, we have had some tremendous success with very serious injuries and I have enjoyed working with some very dedicated people. It makes all the difference. I'd hate to see some ex-players turning up at major events in wheelchairs.

"Talking of injuries brings me to the new sur-

face which, I think, will reduce our knocks and sprains . . . Yes, cut down the number. Although it is only early in the season and difficult to tell exactly, of course, it does seem to be better for Achilles tendons, knees and ankles. It's such a soft surface with so much give. It is fantastic.

Hard grounds

"Of course, at this time of the season, there are a lot of hard-ground injuries, like friction burns, which you would have on any surface. Also, with so many games, there are a lot of the normal knocks and so on. My advice to local players is always—Don't play on them, seek medical advice if you think you have got a serious injury and take it seriously.

"In the last few years we have had some serious injuries to players like Lil Fuccillo, Mike Saxby, Paul Elliott, Stacey North and Rob Johnson and they have all recovered thanks to hard work and dedication and a lot of common sense. They were all injuries that could have ended their careers. I believe Rob is the first person to have had two knees completely rebuilt and return as a First Division player.

Specialists

"There are a lot of people who deserve thanks for our successes. I must thank Luton and Dunstable Hospital and in particular people like Mr. Austwick and Mr. Foss who are specialists attached to it. Also Mr. Meggitt and Mr. Dandy at Cambridge's Addenbrokes Hospital. They have all done work for us in the past and done it superbly. I must also thank Mr. Spender in the radiology unit at L & D. They are all vital to us."



Milk Cup Second Round SHEFFIELD UNITED

In the draw for the Milk Cup second round, we have been scheduled to meet Sheffield United. The first leg will be played on September 24 or 25 at Bramall Lane and the second leg here at Kenilworth Road on Tuesday October 8th, kick-off 7.45 pm.

Season ticket holders can claim seats against voucher 22 from Sept. 7 to 11. Wing Stand holders from Sept. 12 to 14. General sale tickets from Sept. 16.

Pre-match entertainment

This morning's pre-match entertainment is provided by the Chelsea Ladies FC and our own Luton Select XI. Both teams play to a very high standard and the Chelsea side includes two Welsh internationals whilst the Luton team includes a number of England trialists. We thank both teams, the Women's Football Association and in particular Sue Robinson for staging the match which we are sure you will all enjoy.

Away Travel

Our next away fixture takes us to Everton on September 14th. We leave for Goodison Park at 9.15 am from Maple Road. The total cost will be £7.00, new members are always welcome ring Luton 412418 for further details.

Match Ball sponsors



T. J. Hoare Ltd.
We thank T. J. Hoare Ltd. for their sponsorship of today's match ball. T. J. Hoare Ltd. are a Luton-based firm and specialise in Civil Engineering.

TICKET OFFICE NEWS

Our next fixture is away to Everton on Saturday, September 14th. If you travel to away games you can obtain your match day tickets from our ticket office in Kenilworth Road priced £4.50. On Saturday, September 21st we are at home to Queens Park Rangers. Kick-off 3.00 pm.



"BECOME A LUTON WINGER"

We still have available our special wing stand family season tickets. On sale from our ticket office in Kenilworth Road. Adults £60; Juniors/OAP's £45. If you buy a pair of tickets, one adult, one child or pensioner there's a £5 family reduction.

Forthcoming matches at Kenilworth Road



Canon League Division One
Saturday, September 21st
Luton v. Queens Park R. Kick-off 3.00 pm

Canon League Division One
Tuesday, October 1st
Luton v. Ipswich Kick-off 7.45 pm

TONIGHT'S REFEREE



Keren Barratt (Coventry)

A maintenance foreman with Rolls-Royce, Keren is married with two children, both daughters. He progressed via local leagues and the West Midlands Regional League to the Football League. He is interested in playing and watching all sports and also enjoys gardening. Keren is secretary of the Coventry Referees Association and of the Referees' Association six-a-side competition.

HOTLINE Luton (0582)



Office Hours 9 am-5 pm
411622

Stadium Hire: Mike Beevor,
Stadium Sales Manager, 411622

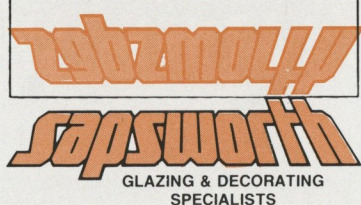
Advertising & Match Sponsorship:
Wendy Greaves, Marketing
Executive, 411622

Souvenirs—Travel—Junior
Hatters: 412418

Match Tickets & Match Enquiries:
Bev Tyler, Retail Sales Supervisor,
30748 (24 hr service) 33010

Banqueting & Function Facilities:
Clive Hustwit, Catering Manager,
411526

Promotions Office: John Gornall,
Development Executive
Top Score—John Dollimore, Pools
Promoter, 411622



Glazing Repairs and Glass Supplies
Patio Door and Window Installations
Double Glazing (Secondary and Sealed Units)
Interiors and Exterior Decorators

For Domestic and Commercial enquiries contact
Luton 573025/597505
For 24 hour Emergency Service contact Dunstable 666665
J. Sapsworth Ltd., 92 Marsh Road, Luton, Beds LU3 2NL

**STEVE
FOSTER**

TOP HATTER



Steve Foster joined the Town in late November 1984 as the first major signing of last season's team rebuilding plans. Born in Portsmouth in September 1957, he played for his home-town club at centre-forward before being converted into an international-class centre-half. He joined Brighton in 1979 and Aston Villa in March 1984. Steve has three full England caps and is our club captain. His dominating figure and reliable defensive play have made him a very popular figure at Kenilworth Road.

SNOOKER STAR

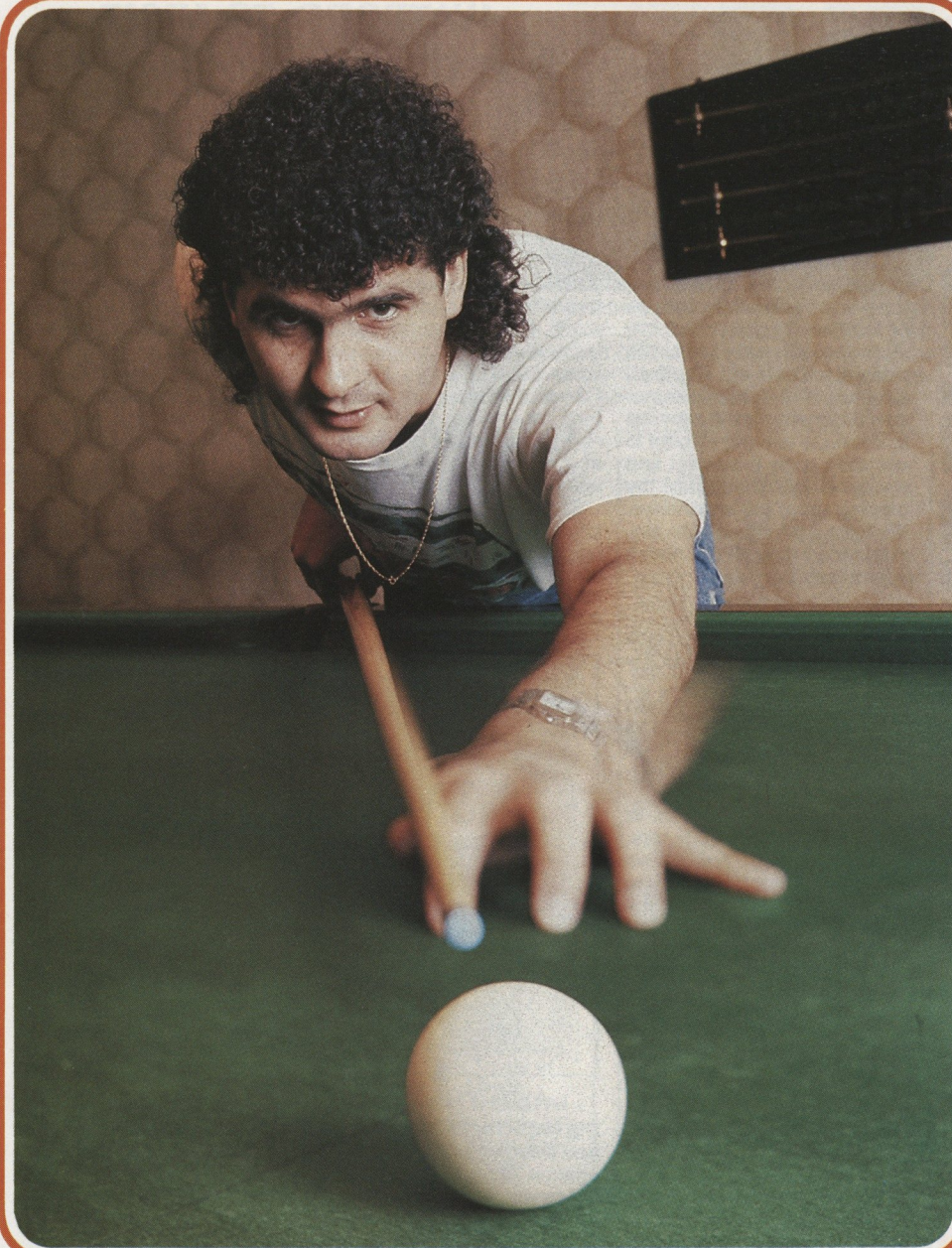
With any reasonable amount of luck, Steve Foster hopes to be able to return to action this morning after a three-week layoff with a heel injury sustained in our opening match against Nottingham Forest. The break has been a tough one for Steve to stomach so early in the season—but at least it has given him a chance to improve his action on the snooker table, his favourite pastime away from the tensions of First Division football.

"My family have got an interest in a couple of snooker halls in Brighton where I live so I have always maintained an interest in it myself since I was quite young," said Steve, who stays at a rented house in Harpenden during the week.

"I play snooker most days after training with the lads. We have quite a snooker 'school' on the go—Ricky Hill, Brian Stein, Mick Harford, Ashley Grimes and David Preece are all regulars as well . . . and 'Nicky'—Peter Nicholas—when he has saved up enough money to join in. Poor Nicky gets thrashed then and goes away again until he can afford it once more!

"Ricky said he saw him pot a ball once! We all enjoy playing and have a good laugh of course. As you know, I got married in the summer and my wife Joanne has a baby on the way—I hope its twins!

"Life has been good to me since I moved to Kenilworth Road. We have a great bunch of players and I think we have a good chance of really doing well this season."





Bill Tomlins

the TOWN

WATFORD TO VISIT FOR CENTENARY MATCH

by Bill Tomlins

CONSIDERABLE coverage has been given over the past few months to football—all of which has been a poor advert for our game. Ill-informed opinions lead to decisions that complicate the short and long-term financial realities of football. We, at Luton, like all clubs, will apply under the new Alcohol at Football Grounds Act for an exemption order which will allow us to continue serving alcohol to our club suite members and sponsors (out of sight of the playing area) on matchdays. We have, I am pleased to say, retained to date all our match sponsorships.

Joint sponsors

Today, I am pleased to welcome to our Joe Payne Lounge the following companies: J. Sapsworth Ltd., Mark James (Salvage) Ltd., B & T Sparks and R. Larkinson Ltd. These companies are jointly sponsoring today's match.

The executive sponsors of our Bedfordshire Suite are, once again, Anachem Ltd. We welcome them and we are grateful for their continued support and hope it will be another enjoyable day.

Centenary kick-off

What better way to kick-off our Centenary celebrations than a match on Tuesday, September 17th against our friends from Watford?

Our new surface has enabled us to put together an exciting programme. They involve, amongst other things, friendship games at all levels, past and present, against our

traditional local rivals.

We are scheduled to start at 7 pm and play until 10 pm. A team of Junior Hatters will play the Junior Hornets, Old Luton Town FC play Old Watford FC, (a chance to see some of your favourite Hatter stars of the past). Our Centenary match kicks-off at 8 pm: Current Luton Town FC v. Current Watford FC—and a bonus for Hatters' fans during a longer-than-normal interval will be a parade of some of our 1959 Cup Final team.

This will be followed by a short Luton Ladies match against Watford Ladies. The second half of our Centenary match will continue at about 9.15 pm.

Admission is: £3.00 seated, £2.00 standing and £1.00 OAP & Juniors. Advanced tickets can be purchased through our offices in Kenilworth Road. Turnstiles will be open on the night from 6.00 pm. A night to remember and a must for all Luton Town Fans!

Our next home Canon League fixture against QPR on Saturday, September 21st, offers a chance to see our youth team play before the main match. We will be playing against Crystal Palace in the South East Counties League, kick-off 12.45 pm. Gates will be open from 12 noon. See the Hatters' stars of tomorrow! So come early for a full afternoon of football entertainment.



... AND THE JUNIORS WERE THERE TOO!

Big Night for two lucky lads: Junior Hatter Simon Holland had a dream come true when he ran out as Town mascot against Arsenal accompanied by another lucky lad, David Coleman, who is a Junior Gunner. He was Arsenal's mascot for the night. A picture for the lads to look back on after the exciting 2-2 draw.



TOWN'S HISTORY TAKES A BOW! 100 Years—412 pages! David Pleat presents the first copy of *The Luton Town Story* to its author Timothy Collings at our Press Launch last Thursday week. In the opinion of all present the book is a must for every Town fan.



OUR Executive Sponsors Anachem's employee Rosa Jones is pictured with Paul Elliott after receiving the £200 cheque she raised for Cancer Research by running in the London Marathon. Well done Rosa and thank you Paul.

EXPERT'S VIEWS OF NEW PITCH

"QUIETLY impressed": Who better than Sir Walter Winterbottom to present a commemorative pen set to match sponsors HAKO at our match against Arsenal? Chairman John McInerney of HAKO received the gift from Sir Walter whose report on artificial surfaces, from the Sports Council, played an important part in the decision to lay our new surface.



Like many others Sir Walter was quietly impressed.

MOTORING TO THE TOP!



"SAFETY FIRST": David Pleat, Mal Donaghy and Mick Harford took time out last Sunday at the Harpenden Road Safety show. Despite strong winds, hundreds turned out for the event. Our picture, by Mick Young of the St. Albans Review, shows Mal and Mick helping St. Albans Mayor Rev. Robert Donald reverse his limousine in the Safe Driving Event.



HAVING A BALL

BALL SPONSOR: Our Arsenal match ball sponsors Willis Dawson made it possible for two of their customers Mr. Griffin and his son Philip to meet Town 'keeper Andy Dibble and receive the ball on their behalf. The picture was taken in our new Eric Morecambe Lounge after the game.

Junior Hatters



Sponsored by:
THE HERALD NEWSPAPER
and CHILTERN RADIO



**Good morning Junior Hatters,
parents and friends**

Hello Junior Hatters,

This is good for me being President of your own Club. Ricky Hill said that I would enjoy it as he did when he was President. It has given me a lot to look forward to. We are planning to do a sports forum with some of the players in the Autumn (date to be arranged), a Christmas party night and a lot more coming your way later in the season.

Enjoy today's game against Chelsea and let us hear you all cheer the team to victory. See you all at our next home match when Queens Park Rangers are our visitors.

Today's mascot is David Mumford, his escorts are Peter Hercock, Greig Brunwin, Kevin Tompkins and Andrew Dudbridge.

I hope you have all renewed your membership now. Give the team your support and enjoy the game. Take care.

Peter Nicholas

ESCORTS



Peter Hercock



Kevin Tompkins

MASCOT



David Mumford

ESCORTS



Greig Brunwin



Andrew Dudbridge

Bedfordshire
Bottled Gases
blog

**PHONE BEFORE FOUR—
NEXT DAY AT YOUR DOOR**

**BREWERS HILL ROAD
DUNSTABLE, BEDS**

DUNSTABLE (0582) 600858

(24 HR ANSWERING SERVICE)

**UNBEATABLE SERVICE
FOR CYLINDER REFILL DELIVERIES**

Specialists in Central Heating run by L.P.G. on bulk tanks or cylinders
Main Suppliers for all leading makes of L.P.G. appliances

Today's

MATCH SPONSOR

B & T sparks

Electrical Contractors

- * INDUSTRIAL & DOMESTIC RE-WIRING
- * ELECTRICAL INSTALLATIONS & MAINTENANCE
- * CONTRACTS UNDERTAKEN
- * ELECTRICAL PANELS

contact
ASHLEY J. BENNETT
LUTON 595702

269 Old Bedford Road, Luton LU2 7BW

NICEIC Approved Contractor

MARK JAMES

(Salvage) Limited
International Marine and
General Salvage Buyers

**"Buyers of damaged insurance
losses of every description"**

For further information do not
hesitate to contact Bob Yates,
Gordon Pettit or Robert Yates.

MARK JAMES (SALVAGE) LTD.,
Grange House, 10 Compton Avenue,
Luton, Beds.

Telephone: (0582) 503777 (5 lines).
Telex: 825082

sapsworth

GLAZING & DECORATING
SPECIALISTS

Glazing Repairs and Glass Supplies
Patio Door and Window Installations
Double Glazing
(Secondary and Sealed Units)
Interiors and Exterior Decorators

For Domestic and Commercial enquiries contact
Luton 573025/597505
For 24 hour Emergency Service
contact Dunstable 666665
J. Sapsworth Ltd., 92 Marsh Road,
Luton, Beds LU3 2NL

Richard C. Larkinson

(Cambridge Limited)

**Scrap Iron, Steel,
Metal Merchants**

**Telephone:
0767 31333
and
0954 51499**

Reserves ACTION REPLAY



RESERVES ON THE RISE

AFTER a tough match against Chelsea, our reserves have settled down to produce some confident football which has brought successive victories over Reading and Charlton Athletic. The squad (pictured above before their trip to The Valley on Wednesday) have worked hard against some stronger and more experienced opponents. Against Reading, they came from behind to steal a 2—1 win with goals from Ashley Grimes and David Oldfield. Our team picture

shows: back row (left to right)—David Oldfield, Gary Parker, Ashley Grimes, Duncan Berry, Gary Cobb, Mark North and John Moore (coach); front row—Ricky McEvoy, Ray Daniel, Marcus Tuite, Mark Stein, Rob Johnson.

Coach John Moore commented after the Reading victory: "Our pattern and passing became much more precise today and the first-time passing movement which led to our second goal was a delight to watch."

Football Combination

	P	W	D	L	F	A	Pts
1 Arsenal	3	3	0	0	13	0	6
2 Chelsea	3	3	0	0	13	1	6
3 Watford	3	2	1	0	8	1	5
4 Oxford Utd	3	2	1	0	9	3	5
5 Norwich C.	3	2	1	0	8	2	5
6 West Ham	3	2	1	0	8	2	5
7 C. Palace	3	2	1	0	6	3	5
8 Ipswich T.	2	2	0	0	4	0	4
9 Charlton A.	3	2	0	1	9	8	4
10 Luton Town	3	2	0	1	3	5	4
11 QPR	3	1	1	1	7	5	3
12 Southampton	3	1	1	1	5	7	3
13 Birmingham	3	1	0	2	9	6	2
14 Tottenham	2	1	0	1	3	2	2
15 Brighton	2	0	1	1	0	1	1
16 Portsmouth	2	0	0	2	1	3	0
17 Swindon	2	0	0	2	4	7	0
18 Reading	3	0	0	3	1	9	0
19 Fulham	2	0	0	2	0	8	0
20 Bristol R.	2	0	0	2	2	13	0
21 Millwall	3	0	0	3	1	12	0
22 Swansea	4	0	0	4	0	19	0

(up to and including Tues, September 3rd)

FOOTBALL COMBINATION APPEARANCES and GOALSCORERS

	Appearances	Goals
Sealey	3	
Johnson R.	1	
Harvey	3	
McEvoy	3	
Elliott	1	
Johnson M.	3	
Cobb	3	
Stein M.	1	
Oldfield	3	1
Grimes	3	1
North M.	2	1
Tuite	1	
Berry	1	
Scott	2	
Farrell	1	
Black	2	
Lewis	2	
Daniel	1	

FOOTBALL COMBINATION FIXTURES

A	Aug	17	Portsmouth	1—0
H	Aug	24	Chelsea	0—4
H	Aug	31	Reading	2—1
A	Sept	4	Charlton Athletic	1—0
A	Sept	7	West Ham United	
A	Sept	25	Brighton & HA	
H	Sept	28	Millwall	
A	Oct	2	Oxford United	
H	Oct	12	Queens Park Rangers	
H	Oct	15	Ipswich Town	
A	Oct	19	Southampton	
H	Oct	26	Swansea Town	
A	Oct	29	Swindon Town	

Youth Team

Kennedy and Farrell lead goal blitz

Luton Town Youth 6 Reading Youth 0

JOHN Kennedy and Sean Farrell hit two goals each as our youngsters overwhelmed Reading last Saturday. After drawing the first two matches of the season against Swindon and Southend, the youth team remain unbeaten after three matches at the time of going to press.

Against Reading they had to rely on a sound performance by goalkeeper M. Cotterall to show them the way. He produced a fine penalty save early on the match when we led by only one goal. But the South East Counties Junior League fixture ended in a rout. Apart from the two goals apiece from Kennedy and Farrell, Aaron Tighe and an own goal added to Reading's misery.

That victory was followed by an equally impressive result in midweek when we beat the Bedfordshire under-18 team 4—0 with goals from Kennedy, Paul Lewis, Colin Barker and Sean Farrell: an impressive result against an older and physically-stronger side.

SOUTH EAST COUNTIES LEAGUE APPEARANCES and GOALSCORERS

	Appearances	Goals
Jones	1	
Bone	3	
James	2	
Barker	3	
Berry	2	
Scott	1	1
Rees	1	
Bowden	2	
Farrell	2	3
Kennedy	3	2
Lewis	1	1
Pooch	3	
Williams	3	
Cotterall	2	
Hyde	1	
Gyalog	2	
Tighe	2	1
Philpot	2	
Connor	1	
Sullivan	2	
Own goal		1

Introducing Chelsea



CHELSEA come to Kenilworth Road this morning as one of the in-form teams of the new season, beaten only once after six League matches and lying fifth in the First Division table—an impressive start at the time of going to press.

Biting with energy and confidence, they are one of the "new" teams to have broken into the elite in the last year and under newly promoted team manager John Hollins, they can be expected to maintain their progress and their all-action style.

Last weekend, Chelsea beat West Bromwich Albion 3-0 at Stamford Bridge with Scottish international David Speedie scoring twice.

Speedie, an aggressive and mobile striker, has developed into the perfect foil to Kerry Dixon who successfully broke through into the England squad during their summer tour of Mexico.

Players likely to be in action this morning: **John Bumstead**—A midfielder with more than 200 senior appearances, John signed pro-

fessional in December 1976. Born in Rotherhithe 27.11.58.

Colin Lee—A versatile player who signed from Tottenham in January 1980, Colin began his career as a full-back with Bristol City before moving to Torquay United. Is equally at home in defence or attack. Born Torquay 12.6.56.

Joe McLaughlin—A central defender who signed from Morton in May 1983 having made over 300 appearances, Colin, 25, played 12 times for the Scottish under-21 international team. Born Greenock 2.6.60.

Pat Nevin—An exciting winger who signed from Clyde in May 1983. Pat's talent proved to be one of the highlights of Chelsea's return to the First Division. Made his debut for the Scottish under-21 team last season. Born Glasgow 6.9.63.

Eddie Niedzwiecki—A Welsh international goalkeeper who signed from Wrexham in May 1983, Eddie, 26, played in the European Cup for Wrexham when only 16. Born Bangor 3.5.59.



Kerry Dixon is certain to be making that little bit of extra effort this morning to snatch his second goal of a season that has been meagre for him by his own high goal-scoring standards. Last season, Kerry, 24, born in Luton, blasted home 36 goals in all for the Blues, 24 in his debut season in the First Division. He also added another four while playing for England on their tour of Mexico and the United States in the summer and one, typically, on his debut for the England under-21's. That makes a grand total of 41 for the season—a fantastic number for the former Dunstable striker who still lives in the area and who has retained his involvement with local junior league football.

Colin Pates—The team captain who signed professional in July 1979, Colin, 24, former England Youth international is a fine defensive player who leads by example. Born Merton 10.8.61.

Doug Rougvie—A rugged full-back who signed from Aberdeen in July 1984, Doug, 29, has made one full international appearance for Scotland. Born Ballingry, Fife 24.5.56.

Nigel Spackman—A midfield player, who signed from Bournemouth in June 1983, Nigel, 24, was Chelsea's only ever-present last season and was one of the main reasons for their successful return to the First Division.

David Speedie—David, 25, was voted the supporters' Player of the Year last season. Signed from Darlington in May 1982, having begun his career with Barnsley. His form was rewarded when he made his Scottish international debut at Hampden Park against England.

Mickey Thomas—A Welsh international midfielder who signed from Stoke City in January 1984, having previously played for Wrexham, Manchester United, Everton and Brighton. Born Mochdre 7.7.54.



Back row, left to right: Eddie Niedzwiecki, Nigel Spackman, Joe McLaughlin, Kerry Dixon, Doug Rougvie, Colin Lee, Steve Francis.

Standing: Dale Jasper, Duncan Shearer, Terry Howard, John Millar, Colin Pates, Paul Canoville, Keith Dublin.

Seated: Pat Nevin, Gordon Davies, David Speedie, John Bumstead, Darren Wood, Robert Isaac, Keith Jones.

Foreground: Kevin McAllister, Phil Priest, Robin Beste, Willie Watson.

B. DOHERTY SKIPHIRE

34 MOUNT PLEASANT ROAD
LUTON
Telephone: 574633 & 574799

T. J. ALDRIDGE Builders



• ROOFING
• SPECIALISTS • PLUMBING
• GENERAL BUILDING • PAINTING & DECORATING
• REPAIRS • CARPENTRY
• BRICKWORK • ELECTRICAL

302 Selbourne Road, Luton, Beds LU4 8NU
Telephone: 505412-505413



Media Men—official PR Consultants to Luton Town Football Club are proud to be associated with a winning team.

7 Albert Terrace, Union street
Bedford MK40 2SF Tel: 0234 213195

SHOREY'S TRAVEL

LUXURY
COACH HIRE
FOR FOREIGN &
UK EXECUTIVE
COACHES



COMPETITIVE RATES · FRIENDLY SERVICE · LOCAL BASED

28 Sheepfold Hill, Flitwick, Bedfordshire
Telephone: Flitwick 713289 Silsoe 60694

MARTIN SMITH MOTORS

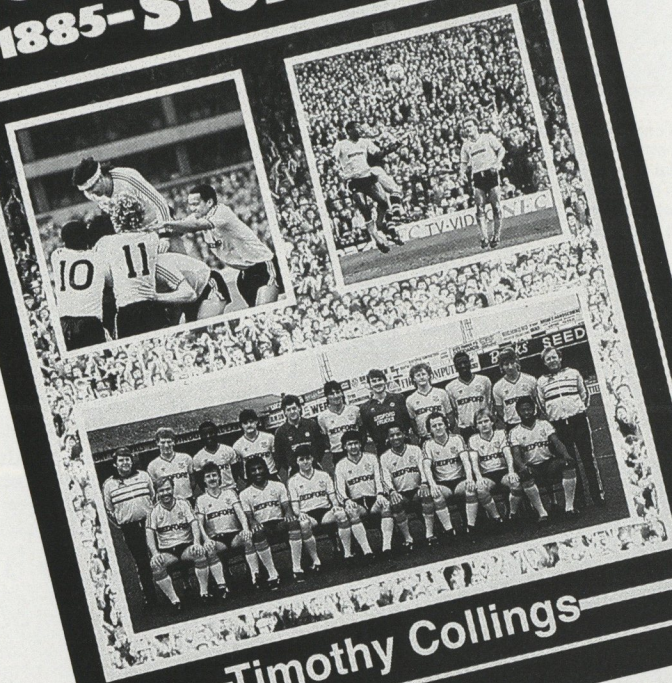
Used Commercial Vehicle Sales

REPAIRS · SERVICING
MOT TESTING

199 Leagrave Road
Leagrave, Luton
Telephone: Luton 574455 or 572806

**A
MUST
FOR EVERY
LUTON TOWN FAN!**

THE LUTON TOWN —1885—STORY—1985—



—Timothy Collings—

Price £12.00,
UK only.

412 pages. Complete statistical section. 8 page
colour section. Many illustrations.
Available Thursday, 29th August from the Club's
Commercial Office, Supporters' Shop and all
leading booksellers.
Full of Luton FC information. All The Managers,
The Great Players, The Great Games, etc.

Postal applications accepted.
Please add £3 p & p.



**JOHN
SMITH**



Club Comment

"The unreported truths"

IN recent years, football has taken a terrible panning from the media. They have criticised every decision and exposed our vulnerability to those who wish to capitalise on and exploit our great game.

Their criticism of our game is often ill-considered, lacks research or is misinformed. Let us take two examples:

1. The *Sunday Times Focus* "Are the British Sick of Football?". A proper insight should have compared us with entertainment. The social revolution since 1945, involving cars and television has fundamentally effected our leisure. And yet, compare football with the cinema, the theatre (despite massive Government support), greyhound racing, cricket, speedway, and so on and the picture changes dramatically. Football has shown its resilience and strength. The same article stated "older fans have drifted away". Of course they have. They are frightened to leave their homes. Ron Saunders is right. It is our society that needs saving.

2. The chorus: Instead of spending millions on transfer fees, spend it on improving grounds. Few clubs make a profit. Those which do are subject to a profits tax. They would rather invest in new players than pay the tax. For example, if we made a profit of £500,000, tax on this would be £200,000, leaving a balance of **£300,000**. But, if we spent this sum on new players, we would save the £200,000. However, if we spent the £500,000 on capital improvements the calculation would be:

Profit	£500,000
Allowance on capital expenditure at 25 per cent	£125,000
BALANCE	£375,000
Less profit tax at 40 per cent	£150,000
BALANCE	£225,000

So if we build, we still pay a massive amount of tax. We have been campaigning for years for tax allowances to encourage clubs to build and help avoid what happened to Chelsea and Wolves.

**EXECUTIVE
SPONSOR**

ANACHEM

**TOP OF
THE LEAGUE
FOR LIQUID
HANDLING**



ANACHEM LIMITED

**20 Charles Street
Anachem House**

LUTON

Bedfordshire LU2 0EB

Tel: (0582) 456666

Telex: 825275

Welcome back to the Canon League.



This is the third season of the Canon League — Canon's sponsorship of the Football League Championship.

Canon's outstanding success in the high technology industries of cameras and business equipment has enabled them to support our national game with over £3 million.

The sponsorship money is shared between all 92 League clubs and is used to help keep admission prices down, encourage exciting attacking football with goalscoring awards and to provide recognition and financial

Canon (UK) Ltd., Canon House, Manor Road, Wallington, Surrey SM6 0AJ.

support to those clubs who do most to promote family attendances at Canon League matches.

In the 1984/85 Canon League season, the beautiful trophies pictured above — specially created by Garrard, the Crown Jewellers — were won by Everton, Oxford United, Bradford City and Chesterfield. This season, all 92 clubs will again compete for these most prestigious trophies in the toughest football competition in the world — the Canon League.

Canon



Official Camera
& Business Machines
of The Football League

VIEWS from the MEDIA

OUR tremendous match against Arsenal when we drew 2—2 here drew praise from all quarters—as much for the new artificial pitch as for the teams who thrilled reporters with their entertaining performances. Here are some of the press reactions with additional views on our 1—0 win at Upton Park.

Daily Mail: "Pioneer Style"—Luton's new look brings out the best in Arsenal. The high-class entertainment provided by Luton and Arsenal last night suggests that the second generation of synthetic pitches can transform the future of English football. Luton's installation is such a dramatic improvement on QPR's pioneering of the Omniturf that it demands to be used by players rich in skill, sharp in mind and fleet of foot. What a pity that no more than 10,012 fans witnessed the exhilarating response of Luton and Arsenal."

Daily Mail: "The gaps in the stands and terracing were as visible as the sand embedded in the plastic surface but there was nothing empty or artificial about a match as good as any in the First Division so far this season."

The Times: "Arsenal could feel well pleased

with their first draw of the season and the accompanying hard-earned point at Kenilworth Road last night. Not many teams will match Luton Town's quick, incisive skills on their new artificial surface and their new very real aggression."

Good bet

Sunday Telegraph: "Luton edged out a haphazard West Ham in an encounter which belied the reputation of both clubs for enterprise and skill... Luton, to their credit, showed a greater commitment to attack, but there was little to quicken the pulses on the terraces."

The Sun: "Luton have put in the gumshields, rolled up their sleeves and decided to fight it out for the next nine months. No longer are David Pleat's side the soft touch of the First Division. In fact, if you are looking for a good outsider, put a few bob each-way on this new-look Luton. Mick Harford, Peter Nicholas, Steve Foster and the fit-again Paul Elliott are in no mood for another season of relation blues."

Anglia Television

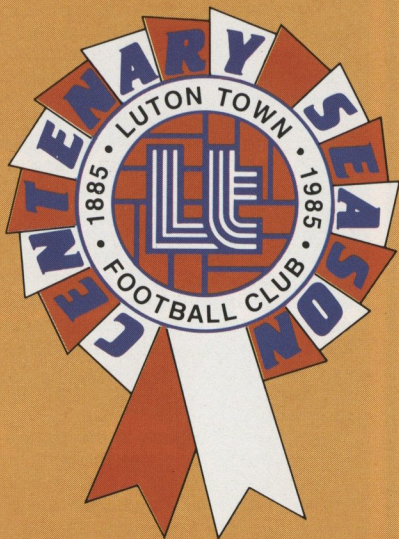
Proud to serve
the
East of England.





Joe Payne is one of several players to have turned out for both clubs. Joe, of course, made his name by scoring 10 goals against Bristol Rovers here in April 1936.

THE LUTON TOWN STORY



ONE of the greatest milestones in the history of Luton Town Football Club was reached on April 11th, 1985, when we celebrated our 100th birthday, two days before that stirring FA Cup semi-final against Everton at Villa Park.

This season we are celebrating our Centenary with a series of events including the publication of the official history of the club, the launch of a Centenary Club and this series of special features which will spotlight great moments in our past. The official history, *The Luton Town Story*, is published by the club and on sale, price £12, at the club offices and bookshops throughout the area.

It contains a fully-documented and illustrated history of the club, full reports of all the great games, detailed sketches of the most prominent players, managers, directors and staff and is accompanied by a fully researched statistical section. The book, like this series of features, will revive old memories and bring long forgotten favourites vividly back to life—Bob Hawkes, Joe Payne, Hugh Billington, Gordon Turner, Bob Morton and many more.

Order your copy now to avoid disappointment—it's a book every supporter will be proud to read.

All Our

FIXTURES against our rivals from London have always provided outstanding entertainment and this morning's meeting will hopefully continue the tradition that began with our first matches back in the mid-1950's. At that time, Chelsea had the upper hand in the results and twice scored four goals against us in our League matches in the 1956-57 season.

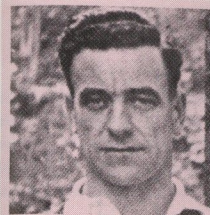
However, we have turned the tables in the last 20 years with some fine victories both here at Kenilworth Road and down the King's Road at Stamford Bridge. Indeed, Chelsea have not won at Luton since Boxing Day 1962 when they triumphed 2-0 and until last season's 2-0 win in May they had not won their home fixture against us since 1977.

All the League meetings have been at First or Second Division level, with both ourselves and Chelsea having experienced each Division in roughly equal measures in recent years. Since 1974, when our matches against Chelsea resumed after an 11-year break, we have won five to Chelsea's three with six drawn and the goal count works out 22-16 in our favour. We will be hoping to add to that today!

The tradition of entertaining matches was highlighted in the 1979-80 season when we were both in the Second Division and met here at Kenilworth Road on New Year's Day. The result was a scintillating 3-3 draw in front of a festive crowd of 19,717. That match is referred to elsewhere today by our manager David Pleat, but deserves further attention as our featured match this week.

The game was played in the morning and on an extremely hard and slippery surface which led, inevitably, to mistakes. But the quality of the play on such a pitch was extraordinary and left everyone breathless as skilful moves and goals flowed consistently throughout the 90 minutes.

Mike Fillery opened the scoring for Chelsea after eight minutes, but from then on we carried the



Hugh Billington was another famous Town goalscorer to make the move to Stamford Bridge. An exceptionally brave number nine, Hugh's career was unfortunately dissected by the Second World War.



Paul Fitcher, who joined us as a 17-year-old from Chester in the summer of 1974, made his debut at Stamford Bridge on December 7th that year in a 2-0 defeat is pictured tussling with Leeds' John O'Hare.

Yesterdays

game at our promotion rivals. Mal Donaghy hit his first goal for Luton with a 20-yard shot after 35 minutes and one minute before the interval Mike Saxby rose to head us in front. Within 30 seconds, Ricky Hill had a marvellous overhead "goal" ruled out because of an offside decision.

In the second half, Ian Britton scrambled an equaliser for Chelsea who played a full part in the entertainment even though they were mostly forced to defend. Then, after 76 minutes, David Moss headed Luton in front and immediately afterwards had another effort ruled out for offside again. Even then it was not all over as Clive Walker broke away to equalise for the Londoners and



Raddy Antic scores our first goal against Chelsea in a 2-2 draw here in April, 1982.

A summary of our League matches against Chelsea. (Luton score first)

	Home			Away		
1955-56	2—2			0—0		
1956-57	0—4			1—4		
1957-58	0—2			3—1		
1958-59	2—1			3—3		
1959-60	1—2			0—3		
1962-63	0—2			1—3		
1974-75	1—1			0—2		
1975-76	3—0			2—2		
1976-77	4—0			0—2		
1979-80	3—3			1—1		
1980-81	2—0			2—0		
1981-82	2—2			2—1		
1984-85	0—0			0—2		
	P	W	D	L	F	A
Home	13	4	5	4	20	19
Away	13	3	4	6	15	24
Total	26	7	9	10	35	43

Mal Donaghy hit the bar before the final whistle drew a deserved standing ovation.

Teams that day: Luton—Findlay, Stephens, Aizlewood, Saxby, Price, Donaghy, Hill, West, Hutton, Stein, Moss. Chelsea—Borota, Locke, Sparrow, Pates, Chivers, Bumstead, Britton, Fillery, Harris, Langley, Walker.

The big crowd that day was not the largest to have attended a Town-Chelsea fixture. That came in our Cup Final year, 1958-59

when 24,864 saw us win 2-1 with goals from Allan Brown and George Cummins. The away match that season saw a 3-3 draw at the Bridge where Gordon Turner scored twice. The previous year he had scored a hat-trick in a 3-1 victory in front of the biggest away crowd for our meetings—34,102. Turner enjoyed his football at Stamford Bridge and in four matches between 1957 and 1963 he scored six of our eight League goals!

First Team

1985-86 SEASON UPDATE

Canon League Division One

	P	W	D	L	F	A	Pts
1 Manchester U.	6	6	0	0	15	2	18
2 Everton	6	4	1	1	14	6	13
3 Sheffield Wed	6	4	1	1	9	8	13
4 Liverpool	6	3	2	1	13	5	11
5 Chelsea	6	3	2	1	8	5	11
6 Newcastle	6	3	2	1	9	8	11
7 Watford	6	3	1	2	14	9	10
8 Arsenal	6	3	1	2	8	8	10
9 Queens Park R.	6	3	0	3	7	9	9
10 Birmingham C.	6	3	0	3	6	10	9
11 Aston Villa	6	2	2	2	9	9	8
12 Manchester C	6	2	2	2	8	9	8
13 Tottenham	6	2	1	3	10	6	7
14 Luton Town	5	1	3	1	7	8	6
15 Leicester City	6	1	3	2	6	10	6
16 Oxford U.	6	1	2	3	10	11	5
17 Coventry	6	1	2	3	8	10	5
18 West Ham	6	1	2	3	6	8	5
19 Southampton	6	0	4	2	6	8	4
20 Nottingham F.	6	1	1	4	5	10	4
21 Ipswich Town	5	1	1	3	2	8	4
22 West Brom	6	0	1	5	4	17	1

League table as September 5th, 1985

LEAGUE APPEARANCES and GOALSCORERS

	Appearances	Goals
T. Breacker	3	
A. Dibble	5	
M. Donaghy	5	
P. Elliott	2	
S. Foster	1	
A. Grimes	1	
M. Harford	5	2
R. Hill	3	
R. Johnson	2	
P. Nicholas	5	
E. Nwajobi	5	2
G. Parker	3(2)	
D. Preece	5	
B. Stein	5	3
M. Thomas	5	

Luton Town

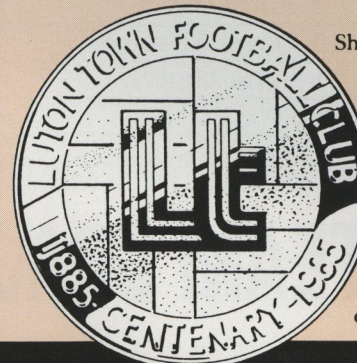
	FA	Att	Pos	1	2	3	4	5	6	7	8	9	10	11	12
Aug 17 Nottingham Forest	1—1	11,381	—	Dibble	Breacker	Thomas	Nicholas	Foster	Donaghy	Hill*	Stein1	Harford	Nwajobi	Preece	Parker●
Aug 21 Newcastle United	2—2	21,304	—	Dibble	Thomas	Grimes	Nicholas	Elliott	Donaghy	Parker	Stein	Harford1	Nwajobi1	Preece	North
Aug 24 West Ham United	1—0	14,104	8	Dibble	Johnson	Thomas	Nicholas	Elliott	Donaghy	Parker	Stein	Harford1	Nwajobi	Preece	North
Aug 27 Arsenal	2—2	10,012	10	Dibble	Breacker	Thomas	Nicholas	Parker	Donaghy	Hill	Stein1	Harford	Nwajobi1	Preece	Grimes
Aug 31 Aston Villa	1—3	10,524	12	Dibble	Breacker	Thomas	Nicholas	Johnson*	Donaghy	Hill	Stein1	Harford	Nwajobi	Preece	Parker●
Sept 7 Chelsea															
Sept 14 Everton															
Sept 21 Queens Park Rangers															
Sept 28 Sheffield Wednesday															
Oct 1 Ipswich Town															
Oct 5 Manchester United															
Oct 12 Oxford United															
Oct 19 Southampton															
Oct 26 Liverpool															
Nov 2 Birmingham City															
Nov 9 Tottenham Hotspur															
Nov 16 Coventry City															
Nov 23 Watford															
Nov 30 Manchester City															
Dec 7 Newcastle United															
Dec 14 Nottingham Forest															
Dec 21 West Ham United															
Dec 26 West Bromwich Albion															
Dec 28 Ipswich Town															
Jan 1 Leicester City															
Jan 4 FA Cup Round 3															
Jan 11 Chelsea															
Jan 18 Aston Villa															
Jan 25 FA Cup Round 4															
Feb 1 Arsenal															
Feb 8 Southampton															
Feb 15 Liverpool (FAC5)															
Feb 22 Queens Park Rangers															
Mar 1 Sheffield Wednesday															
Mar 8 Manchester United (FAC6)															
Mar 15 Oxford United															
Mar 22 Everton															
Mar 29 Leicester City															
April 1 West Bromwich Albion															
April 5 Birmingham City (FAC s/f)															
April 12 Tottenham Hotspur															
April 19 Coventry City															
April 26 Watford															
May 3 Manchester City															

MC = Milk Cup

FAC = Fa Cup

©Copyright of The Canon League

Join the Luton Town F.C. Centenary Club.



Share in our 100th anniversary celebrations by joining the Luton Town F.C. Centenary Club and get this superb limited edition Centenary Medal free. You will also receive every home match programme, two tickets for any home league match (subject to availability), an exclusive inside-track newsletter, priority availability for International and cup match tickets and much more...

Ring David Pleat on
Luton (0582) 594466
for all the details!

*Indicates player substituted ●Substitute used Home fixtures in **bold** Scorers name in **bold** + Own goal

THERE IS NO SUBSTITUTE.

THE WORLD'S LARGEST SPORTSWEAR MANUFACTURER



Photos by
Gareth Owen

Editor:
Robert Alexander



Vauxhall Teamcheck

Luton Town

1	Andy Dibble
2	Tim Breacker
3	Mitchell Thomas
4	Peter Nicholas
5	Steve Foster
6	Mal Donaghy
7	Ricky Hill
8	Brian Stein
9	Mick Harford
10	Emeka Nwajiobi
11	David Preece
Sub	

Chelsea

1	Eddie Niedzwiecki
2	Colin Lee
3	Doug Rougvie
4	Colin Pates
5	Joe McLaughlin
6	John Bumstead
7	Pat Nevin
8	Nigel Spackman
9	Kerry Dixon
10	David Speedie
11	Jerry Murphy
Sub	

Referee: K. BARRATT

Linesmen: K. MORTON (Red Flag) R. G. SMITH (Yellow Flag)

THE ROVERS' TEAM COACH.



THE NEW VAUXHALL ASTRA ESTATE.

Remember, we got here first.

