

Official Programme
Price £1.00

LUTON TOWN



Tonight's match is sponsored by:

**HAKO
MACHINES**

CANON LEAGUE DIVISION ONE
Luton Town v. Arsenal
Tuesday, August 27th, 1985
Kick-off 7.45 p.m.

ACTION REPLAY



A cracking start: Brian Stein, above left, chips our superb opening goal against Forest and Mick Harford volleys wide.



Penalty paid: Gary Parker, above, had his shot from the spot saved at Newcastle where the Magpies fought back to draw 2-2 after Brian Stein, top left, was fouled. The result was a disappointment for Mick Harford, below right and left, after scoring, who showed fine form on his return to the north-east.



WHA

**W. H. ALLSOP & SONS
(Builders) LTD**

Established 1950

• BUILDING SERVICES • WINDOWS • ROOFING • MINI-SKIP HIRE

153 New Town Street, Luton LU1 5BR. Telephone: (0582) 458000

Falcon
Holidays



ATOL
1337BC

13 seasons of top class competition and we're still top of the holiday league! Try a Falcon Holiday this year and find out why we're unbeatable.

Tel: 01-221 6298

190 Campden Hill Road London W8 7TH

EVEN THE PRICE IS A GOOD LOOKING NUMBER.



BEDFORD'S NEW MIDI.

BEDFORD 
Now the driving force.



LUTON TOWN

Welcome you all to our Centenary Season!

Chairman
David Evans

Directors
M. A. Aleyan, T. W. Bailey,
R. L. Banks, E. S. Pearson,
D. Pleat, R. J. Smith,
J. R. Smith

Chief Executive
John Smith

Manager
David Pleat

Company Secretary
Graham Mackrell

Commercial Director
Bill Tomlins

President
J. A. C. Bain

Honorary Life Members
J. Richardson
T. Hodgson

Vice Presidents
A. G. Berry FCCA,
C. Bygrave, C. J. Evans,
B. Cole, E. Fountain,
C. Holloway,
I. E. Holmes,
L. Leppington,
R. Larkinson,
R. Safranek,
R. Unwin, E. Waller

HONOURS

FA CUP FINALISTS 1958-59
CHAMPIONS—DIVISION 3(S) 1936-37
RUNNERS-UP—DIVISION 2 1954-55
CHAMPIONS—DIVISION 4 1967-68
RUNNERS-UP—DIVISION 3 1969-70
RUNNERS-UP—DIVISION 2 1973-74
CHAMPIONS—DIVISION 2 1981-82

100 Years On

TONIGHT we welcome our illustrious neighbours from North London and we hope the game is fast, exciting and enjoyable. If you enjoy what you see, encourage a friend to accompany you next time. Everyone in football was delighted that the comradeship and spirit, both on the field and on the terraces, was excellent on 17th August. With the absence of the TV eye we all read our Sunday morning papers with interest and it was pleasing to read about "the game". Now that, hopefully, we have eradicated the bad element, genuine supporters will return to our grounds and we shall see a steady increase in our attendances.

I saw some positive signs for this season against the Forest who struck me as a team that will pose difficult problems for the opposition. They are most patient and rarely throw caution to the wind. Although we had a difficult second half, with several injuries, we continued to show strong efforts, and, in the end, missed chances cost us three valuable points. The importance of a smooth opening day can never be underestimated. All the players on both sides enjoyed the comfortable pitch, tailor-made for good passing and skill. The sand will eventually settle into the "roots" of our "grass" and the pitch will look green.

The policing was efficient; made easy by sensible supporters. Our stewarding has been improved. We hope the programme is fair value. The new dressing room area was completed only hours before the kick-off. We have a smart new guests' lounge. The pre-match sports and the splendid marching band gave a carnival atmosphere.

Today, along with Government guidelines,



our game is all-ticket. We hope that whilst genuine supporters may be disappointed that they have to make an extra journey to get a ticket, they understand the reasons why.

Injuries have forced an early reshuffling of our team and I hope that players getting a chance will show the form that ensures healthy competition for places. It is my wish that we can compete successfully with a quality squad. Players like Ricky Hill and Brian Stein, who have recently signed new contracts, will regain their chances at international level if the team is winning and gains the extra projection.

Let us hope we see a splendid game tonight and remember to be fair and sporting whoever you support.

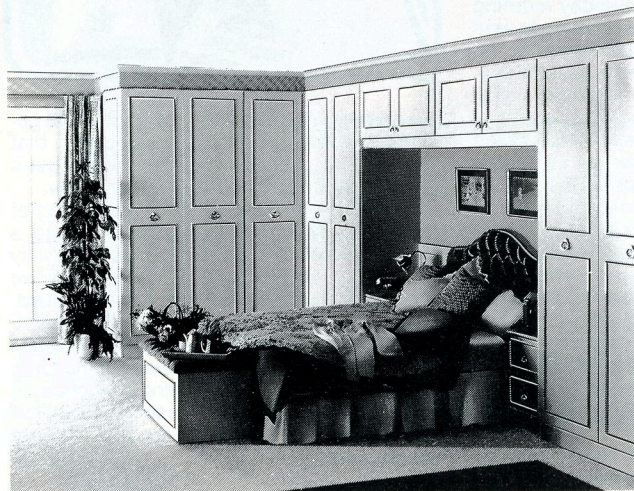
Best wishes

If you want to know the score about fitted bedrooms, look at the scoreboard.

Wallspan Fitted Bedrooms offer you style and elegance at a realistic price.

Our range of fully fitted furniture will grace any home and blend with any decor.

Free design, free delivery, free fitting and a full five year guarantee make Wallspan Fitted Bedrooms the top of the league.



**Wallspan
Bedrooms**
Throughout the UK

Unit 174 Bute Street, Arndale Centre, Luton
Flitwick Factory Showroom and Head Office: 0525 716161

GirlTalk

ON Saturday 13th April, 1985 a friend of mine said he was going to stop everything he was doing during the afternoon, look around him, take stock and say, "I was here." He was, of course, referring to Villa Park when we played Everton in the FA Cup semi-final last season. It was for my friend, too young to have been an active supporter in 1959, an historic occasion.

Even more historic, but for a different reason, was the match played on 17th August, 1985 against Nottingham Forest. The opening match of Luton's Centenary Season was played on an artificial surface emblazoned with the name of Bedford Trucks. Like all Luton fans I was keen to see how the surface played. I have watched Luton play at QPR and wondered how our pitch would differ from theirs. To my amateur's eye (still without new contact lenses) it seemed the ball ran as true as it did on the Loftus Road surface but skidded less, and bounced more naturally. The pitch appears to play more like grass than the one at Loftus Road. With the sand on it it looks like a grass pitch—but one at the end of the season when the grass is getting bare!

Apart from the historic nature of the games on 13th April and 17th August, 1985 there was another connection. Both were refereed by Mr. John Martin. Many fans, including those around me, felt that on both occasions errors in his refereeing led to the opposition scoring. But there the similarity ends; against Nottingham Forest we failed to take the chances so skilfully created.

Taking everything into account, I think we can be optimistic about the future and I'm sure the new pitch was definitely a good investment. I was wondering what the young apprentices would do at half-time now they are no longer required to replace the divots on the pitch. I half expected to see them sweeping the sand back into place! But I think the final word on the pitch should go to the lady I heard say, "Well at least they won't get so muddy this season."

Gale Waller

Anyone wanting to contribute to Girl Talk please write to:

The Editor,
Luton Town FC,
Kenilworth Road,
Luton.



Executive members

- ★ ANACHEM LIMITED
- ★ MR. W. ASHBURNER
- ★ BEARD & MANNING CATERING SERVICES LTD.
- ★ BEDFORD COMMERCIAL VEHICLES
- ★ BERVALL MEAD INSURANCE BROKERS LTD.
- ★ W. J. BILLINGTON LTD.
- ★ BLAKEY ENGINEERING CO LTD.
- ★ BLUE ARROW plc
- ★ BRENGREEN HOLDINGS plc
- ★ BROAD STREET PRINT
- ★ B.R.I. INVESTMENTS LTD.
- ★ CANVERMOOR plc
- ★ COUNTY MOTORS LTD.
- ★ GARY CHAMBERLAIN WINDOW FASHIONS
- ★ CAPITAL METALWORK LTD.
- ★ DUPONT (UK) LIMITED
- ★ FILMERGRAPHIC PRESS LIMITED
- ★ F. W. PEARCE BUILDERS LTD.
- ★ BRIAN E. HANDSCOMBE Life & Pension Brokers
- ★ E. W. HUDSON (HOLDINGS) LTD.
- ★ IVOR HOLMES LTD.
- ★ INFORMATION TECHNOLOGY LTD.
- ★ MARK JAMES (SALVAGE) LTD.
- ★ JOHN LAING CONSTRUCTION LTD.
- ★ RICHARD C. LARKINSON (CAMBRIDGE) LTD.
- ★ MR. P. LAYCOCK
- ★ LUTON BATHROOM & TILE CENTRE
- ★ LONDON PROVINCIAL CONSTRUCTION LTD.
- ★ MILCUT ENGINEERING LTD.
- ★ NEAHURST LTD.
- ★ D. R. NEWTON
- ★ OPELVALE GROUP
- ★ MR. & MRS. S. PEARSON
- ★ DR. & MRS. G. L. PLESTER
- ★ PRIORY FARM FOODS
- ★ PETERS GRAVES & CO.
- ★ DAVID RAND & CO LTD.
- ★ RICHARDSON & BOTTOMS LTD.
- ★ ROGERS RESIDENTIAL SALES
- ★ RAVENMERE LTD.
- ★ REDBOURNE CONSTRUCTION
- ★ SHAW & KILBURN
- ★ SHOREY'S TRAVEL
- ★ MR. & MRS. D. SHERIDAN
- ★ W.S. TYREMASTERS (Division of West & Sellick (Tyres) Ltd.)
- ★ TRITRADE LTD.
- ★ TILDAE INVESTMENTS LTD.
- ★ R. W. UNWIN
- ★ VAUXHALL MOTORS LTD.
- ★ WALLSPAN BEDROOMS
- ★ WEBBEX LIMITED
- ★ YARNSFIELD LTD.

THE FULL ADDRESSES AND SERVICES OF OUR EXECUTIVE MEMBERS CAN BE OBTAINED THROUGH OUR COMMERCIAL OFFICES—LUTON TOWN FOOTBALL CLUB.

Alpine Press

LEADING THE FIELD

in up-to-the-minute
print technology.

WITH US—
QUALITY
COMES FIRST

Alpine Press,
Station Road,
Kings Langley, Herts.
(09277) 69777

Mail Bag

Write to: The Editor,
Luton Town FC,
Kenilworth Road,
Luton
by Tuesday am.

Honoured

Dear Sir,
WE were honoured to have one of your players, Emeka Nwajobi, attend the League's Presentation Dance.

I received many notes of thanks for his attendance and the manner he involved himself in the evening's celebrations.

Emeka proved to be an exceptional ambassador for your Club and football as a whole, especially considering the recent well publicised unfortunate events.

Mark Ratcliffe,
Leighton & District Sunday League, Dunstable

Friends

Dear Sir,
JUST a note to put on record my appreciation of your club's co-operation with the soccer coaching course last week.

A visit by yourself and the players went down extremely well with the youngsters and the coaches were highly capable.

All in all, I think we have both gained a lot of friends, be they readers or supporters.

R. Burton (Editor)
Bedfordshire Journal

Thanks Roy

Dear Sir,
ON behalf of all concerned with Wigmore Athletic FC, I would like to thank you for your part in making the arrangements for Ray Daniel to attend our Presentation Evening. He was a tremendous success and handled the presentations in a most impressive manner and we were particularly pleased with the amount of time he gave to the younger members of our club. Ray is a great credit to Luton Town FC and we wish him and yourself every success in 1985-86.

S. Williams (Mrs)
Luton

Help, please

Dear Sir,
BOTH myself and my son are Luton Town season ticket holders and we would be grateful if you could advise us of any other known ticket holders/supporters living in our immediate area.

If we are able to establish contact, this will help to reduce travelling costs but more importantly, enable my son to watch all home games as my commitments prevent me from attending all matches.

A. G. Hucklesby (Mr.)
Bishops Stortford

Pen pals

Dear Sir,
I AM a Watford supporter and I would like to write to any female Luton Town supporters aged 15-19 years old. I am 17 years old.

Dave Mason
Watford

Lovely lady

Dear Sir,
I WAS sorry to hear the news of Joyce Ellis' sudden and sad death.

She was a lovely lady who everyone liked. She will be greatly missed by all who knew her,

Sally Backhouse,
Bedford

Dear Sir,
HAVING recently returned from holiday, I was shocked to hear of the sudden death of Joyce Ellis.

To many of our younger members, Joyce was the only contact they had with your club and her patience with their many small requests was appreciated and admired. She will be sadly missed by all.

On behalf of our club would you please pass on to her family our sincere condolences.

Richard Moore (Vice-Chairman)
Harpenden Colts FC.

Magic-man!

Dear Sir,

I AM a supporter of the most entertaining team in the world (Luton Town). I think Luton for their ability to score classy and early goals. I think by Gods grace next season Luton shall be 1st Division champions. Luton has many good players eg Ricky Hill, Wayne Turner and Brian (Magicman) Stein. Ricky Hill is my favourite player in Luton. I like him for his ability to score goals brilliantly and unselfishly.

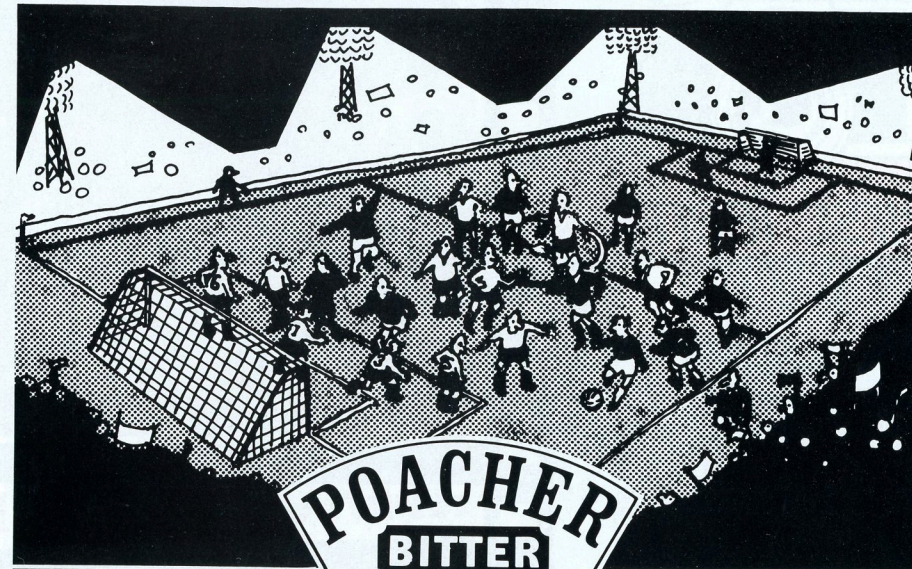
Sir I would please like you to send me your team group poster, your team banner and your supporters club relevant forms. I would be much obliged if you do. I was disappointed when Luton lost to Everton 2-1 in the FA Cup semi-final. Well may be the day wasn't your day. Sir I hope you reply to my letter early because I don't like being kept in suspense.

I am 14 years of age and I am a right-full back for Red Tigers under 16 football club of Nigeria. Maybe one day when I come to Britain I shall visit Kenilworth Road, and play for you by Gods grace my dreams would be fulfilled.

Olusiji Abrodun, Nigeria

Thanks for your letter. Your great support is appreciated. Let us hope one day you will visit Luton and meet the players. Emeka Nwajobi is flying to Lagos for the World Cup game against Tunisia. Make yourself known to him. He is a fine man.

Best wishes
David Pleat.



WORTH GOING OUT NIGHTS FOR

Luton News

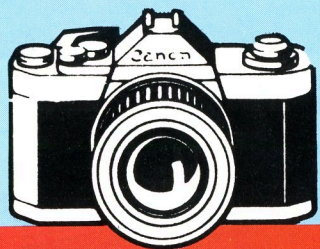
SPORT AND MOTORING
TOWN MATCH VERDICT
SUPER-SHOW
BREAKS
B DUCK

THE BEST SPORTS PAGES IN TOWN!

**BRIAN SWAIN,
ERIC NORRIS,
DAVID PLEAT,
MARK RICHARDS**

His work stops at 5.30 Friday.
His responsibility doesn't.

THURSDAYS 14p



First Team ACTION

Luton 1 Nottm Forest 1

INJURIES in the second half and a mixture of bad luck and missed chances were all that stopped us running up a handsome victory in our first match on the new £350,000 magic carpet at Kenilworth Road last Saturday week. An early goal by Brian Stein from a perfect through ball by Ricky Hill put us a goal ahead, but later knocks to Hill, skipper Steve Foster and Tim Breacker disrupted our rhythm and confidence.

Forest made the most of their good fortune and snatched an equaliser from a set-piece free-kick routine when new signing Neil Webb shot home in the 54th minute.

Tonight's action pictures show Foster dribbling his way out of trouble, Mick Harford rising to challenge the Forest defence and David Preece leading a raid from midfield. Unfortunately, Foster may be missing tonight with the injury that ruled him out at Newcastle where we were in action without his commanding presence and also Ricky Hill and Tim Breacker.



ACTION REPLAY from

St. James' Park



Emeka Nwajiobi and Mick Harford pictured scoring our goals at Newcastle last week when we were pulled back to a draw after leading 2-0 with 18 minutes to play.

(Photos: Gareth Owen)





TREVOR HARTLEY

Views

from the bench

AFTER playing in the Football League for West Ham United and Bournemouth, Trevor Hartley began a career in coaching that began under John Bond on the south coast, took him to Singapore as national director of coaching and finally brought him to Kenilworth Road in June 1980 to join David Pleat's staff. Born in 1947 in Doncaster, he was a scheming forward as a player. Today, Trevor gives his views on the new £350,000 artificial pitch at Kenilworth Road.

"After just one match I can say I was absolutely delighted with the pitch. It was as near to perfect as you could wish for a football pitch and I think most of our players feel the same way now—even those who were a bit sceptical beforehand. We are always very slow to accept any sort of changes here in England and I think good artificial pitches like these are way overdue in this country. It is certainly the best I have ever kicked a ball around on in my career and I have played in America for West Ham in the past on both Tartan and Astro turf. They gave burns if you were not careful, but ours is not like that and will be no trouble at all once the sand has all settled in.

Investment

"This pitch conforms to the Walter Winterbottom suggestions for playing surfaces in its characteristics and is going to be a very fine investment. If you've got skilful players it is great—and our players love it already. The only problem is that it is slightly smaller widthwise . . . it is not exactly the same size as the old

pitch. I think we had hoped it would be a bit bigger.

"But it is only a matter of a couple of feet. Maybe we can get it extended a bit later on because width is vital to good footballing teams. They need space to play. Brian Clough was one of the first people I asked about it, after Forest had come down to train on it. He said it was superb and their players all seemed to like it as well.

"In fact, some of them were thinking of wearing short studs for the match. I think in fact that it will take a stud later on, particularly when it is wet. It will also be possible to take a good tackle, a sliding tackle, in the wet. It makes me feel a bit sorry for QPR really because they were the first, but they didn't have the patience to load all the sand on and wait. They were so keen to have a perfect green surface and of course they were given a poor reception.

Skilful players

"Another good thing about it is that it will really benefit our lighter skilful players during the winter when it is normally all mud and rain and heavy pitches. They will be able to sustain themselves much better and not get bogged down. That is when it will really come into its own—and by then we will have played on it a lot more and got used to it. I am sure it is going to be a winner for us this season.

"Maybe the first match was not the perfect result for us, but remember we had to get used to it as well as Forest and QPR lost in their first match on their artificial pitch . . . against Luton Town."

Glazing Repairs and Glass Supplies
Patio Door and Window Installations
Double Glazing (Secondary and Sealed Units)
Interiors and Exterior Decorators

For Domestic and Commercial enquiries contact
Luton 573025/597505

For 24 hour Emergency Service contact Dunstable 666665

J. Sapsworth Ltd., 92 Marsh Road, Luton, Beds LU3 2NL

sapsworth
GLAZING & DECORATING
SPECIALISTS



LUTON STRIKERS

Our glamorous Luton Strikers are back this season to provide an extra splash of colour and excitement and tonight they are sponsored by Mr. C. Bassett of Universal Salvage.

Thank you Mr. Bassett for keeping the girls in business as we know they are on the lookout for new sponsors.

Anyone willing to help, please ring Luton 417086 or 20975.

PRE-MATCH ENTERTAINMENT

PHOENIX DRUM CORPS

Tonight's pre-match entertainment is provided by the Phoenix Corps of Drums from Coventry. Established nine years ago in 1976, the Phoenix's members are aged from nine to 21. There are 45 bandsmen providing the beat tonight!

AWAY TRAVEL

This coming Saturday we travel to Aston Villa. Our coaches depart from Maple Road at 11.15. The total cost is £4.50 and remember it is only £1 to join the Travel Club.

**MATCH BALL
SPONSORS**
Willis Dawson
Ltd.,



builders and developers, of Leighton Buzzard are our match ball sponsors tonight. Three of their directors are Town fans and season ticket holders.

TODAY'S REFEREE

**Alan Seville
(Birmingham)**



Married with three children, Alan is a toolmaker. He began refereeing in 1962 and progressed via Birmingham and District Works and West Midlands (Regional) League to the Football League. He enjoys playing bowls when not at home with his family. He ran the line for a UEFA Cup match in 1978 and an FA Cup semi-final in 1979. He has taken charge of many other important regional Cup Finals.

ALL-TICKET MATCH

Do not forget that our next home fixture against Chelsea on Saturday 7th August, kick-off 11.30 am, is an all-ticket match. Tickets will be on sale in our Ticket Office in Kenilworth Road directly after tonight's game and on Oak Road turnstiles 7, 10 and 14.

"BECOME A LUTON WINGER"

We still have available our special wing stand family season tickets. On sale from our ticket office in Kenilworth Road:—Adults £60; Juniors/OAP's £45. If you buy a pair of tickets, one adult, one child or pensioner there's a £5 family reduction.

FORTHCOMING MATCHES at Kenilworth Road



Canon League Division One

Saturday, September 7th

Luton v. Chelsea Kick-off 11.30 am

ALL TICKET MATCH

Football Combination

Saturday, August 31st

Luton v. Reading Kick-off 2 pm

HOTLINE
Luton (0582)



Office Hours 9 am-5 pm
411622

Stadium Hire: Mike Beevor,
Stadium Sales Manager, 411622

Advertising & Match Sponsorship:
Wendy Greaves, Marketing
Executive, 411622

Souvenirs—Travel—Junior
Hatters: 412418

Match Tickets & Match Enquiries:
Bev Tyler, Retail Sales Supervisor,
30748 (24 hr service) 33010

Banqueting & Function Facilities:
Clive Hustwit, Catering Manager,
411526

Promotions Office: John Gornall,
Development Executive
Top Score—John Dollimore, Pools
Promoter, 411622

MITCHELL
THOMAS

TOP HATTER



Mitchell Thomas joined the Town in the 1980-81 season from the Government's Youth Opportunities programme and has worked hard to become one of the leading young full-backs in the First Division. Born in Luton in October 1964, he established himself as an England Youth international and last season graduated to the under-21 squad when he was called up for the European under-21 match against Rumania. Though he was only among the substitutes that time, it cannot be long before he becomes a regular.

HARD WORKER

Determination and hard work have been the hallmarks of Mitchell Thomas's rise to glory in the last five years and he hopes that one day he will be able to repay football by staying in the game to coach other youngsters who are trying to make it to the top.

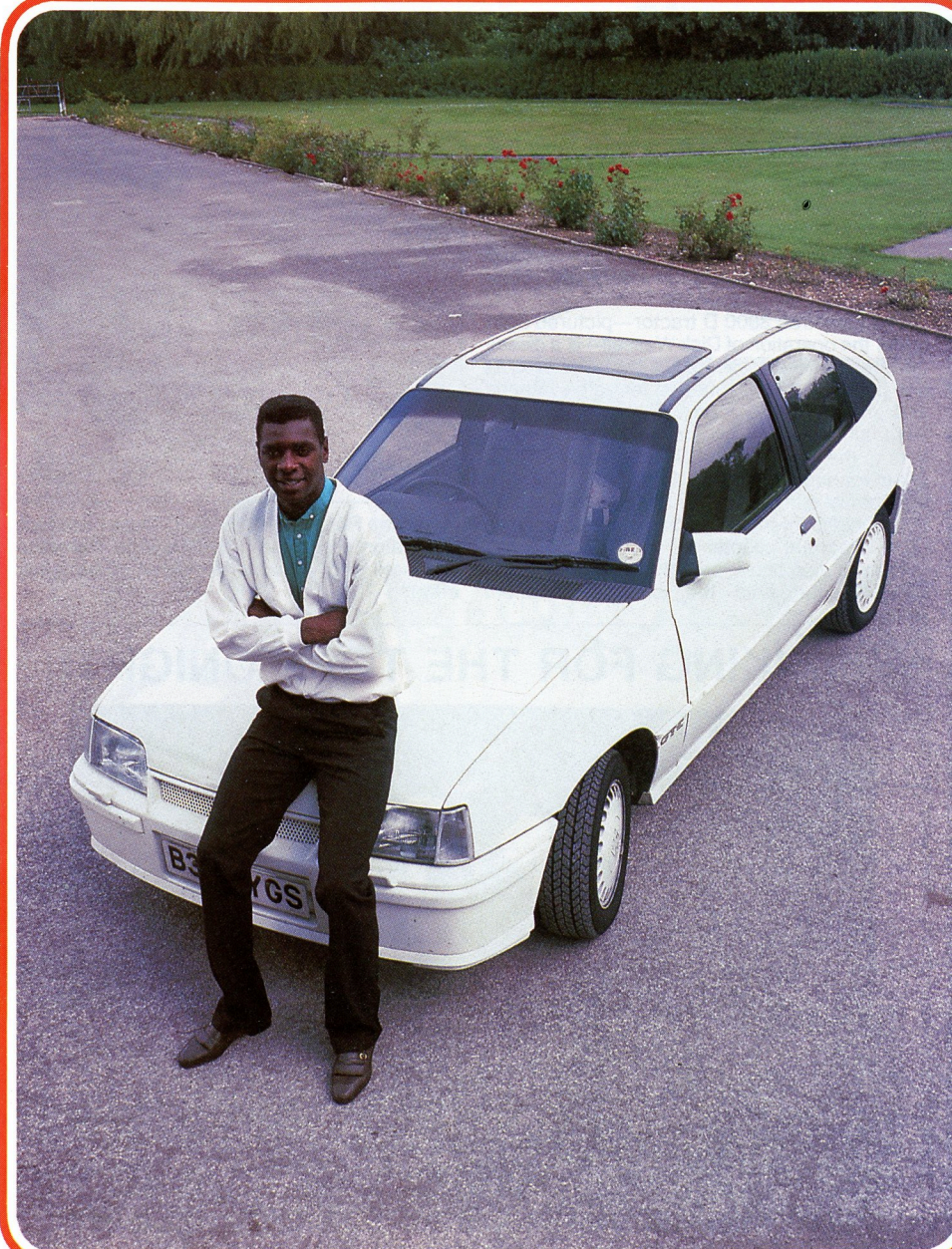
But, enjoying life as a lively 20-year-old, Mitchell is also keen to make the most of today—though his off-pitch life is not all about fast cars and fun as he is quick to point out.

"My favourite occupation away from the ground and football is just relaxing. I like to take it easy at home with my sister and six brothers, maybe watch a few videos or go for a sauna. I'm not one for going out all over the place or anything.

Enjoying life

"Of course I like music and enjoying life, but it is more important to me to have a good rest and to keep making progress as a professional. After all, I had to work hard to become one in the first place! That was when I was only 16. I was always interested in football and I knew that in my six months on the YOP scheme I would have to really impress if I was to be taken on as an apprentice.

"One of my favourite hobbies is driving, like anyone else. But I don't get much chance for it—only from home to training and back most of the time as we are always travelling away and being picked up and so on. But I try to take care of my car as much as I can as you can see!"





Bill Tomlins

the TOWN

by Bill Tomlins

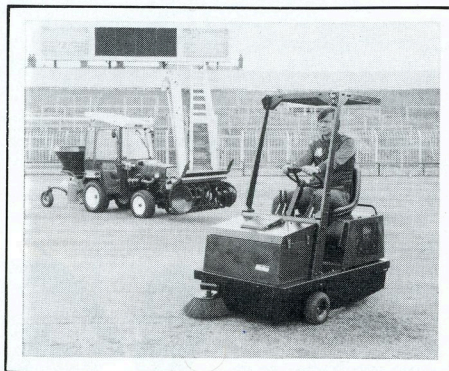
NEW PITCH, NEW IDEAS AND NEW TRACTORS . . .

OUR decision to install an artificial pitch has been our introduction to the sponsors for tonight's match—Hako Machines. With a synthetic surface to care for, we needed a specialist method of maintaining it. And, for this, we went to Northampton-based Hako who have supplied us with two machines to ensure us of year-round care.

The Hakotrac 3800 D tractor—pictured right under the operation of Dick Wassell—is a diesel-powered multi-purpose tractor recommended as one of the best on the market for both synthetic and grass sports surfaces.

Tonight we also welcome our executive sponsors to the Bedfordshire Suite—Anachem Ltd. Their managing director Gerry Atkinson is a member of our Kenilworth Suite and he will be busy tonight entertaining some of his company's most important clients.

We will also see a presentation tonight of a £200 cheque from the club to Anachem



employee Rosa Jones for the Cancer Research Campaign. Rosa ran in the London Marathon last April and we were delighted to back her efforts.

STRIKING FOR THE TOP TONIGHT!

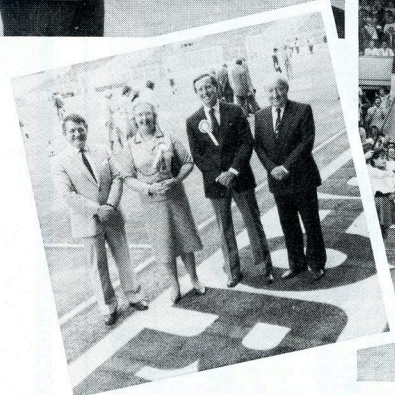


Our very own Luton Strikers in new outfits and with a new routine welcomed us back for the new season and will be in action again tonight.

SUPER START FOR THE MAGIC CARPET



What a great start to the season we had with the opening of the new pitch, writes Bill Tomlins. Pictured here you can see some of the pre-match ceremony with, left, our chairman David Evans and En Tout Cas's Don Gordon at the presentation of a Wedgewood plate to mark Wimbledon's Centenary. Below Steve Foster leads out the team for our first Centenary season match against Forest and our chairman, the general manager of Bedford Trucks J. T. Battenburg III, the Mayor of Luton, Cllr Mrs. A. L. Bush, and Mr. Gordon pause for a picture at the opening ceremony.



Pre-match action against Forest with the Vauxhall Golds netball club and the Luton Select Basketball Club—just two of the many sports our new pitch can be used for.



Junior Hatters



Sponsored by:
THE HERALD NEWSPAPER
and CHILTERN RADIO

Good evening Junior Hatters,
parents and friends

Hello Junior Hatters,

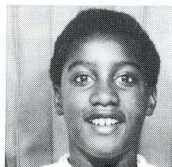
Hope you enjoyed the first game on our new pitch. It was nice to see so many of you with your parents sitting in your special enclosure. I hope you have all renewed your membership as I am now starting to draw the names out of the drum for some of the next few homes matches for mascots and escorts.

As you know you keep the kit you wear on your special day. See you all next home match.

Enjoy tonight's game against one of the oldest and most famous clubs in the League. It is a bit special for me as I once played for the "Gunners". Take care and do your best to support the team.

Peter Nicholas

ESCORTS



Roger Crawford



Terence Ward

MASCOT



Simon Holland



Grant Linney



John Barnby

**Bedfordshire
Bottled Gases**
blog

PHONE BEFORE FOUR—
NEXT DAY AT YOUR DOOR

**BREWERS HILL ROAD
DUNSTABLE, BEDS**

DUNSTABLE (0582) 600858

(24 HR ANSWERING SERVICE)

UNBEATABLE SERVICE
FOR CYLINDER REFILL DELIVERIES

Specialists in Central Heating run by L.P.G. on bulk tanks or cylinders
Main Suppliers for all leading makes of L.P.G. appliances

Tonight's MATCH SPONSOR

Synthetic
**ON THE SURFACE
WE ARE UNBEATABLE**

**For efficient and
economical care
and
maintenance**

Every synthetic surface that is fast becoming a feature of playing surfaces, running tracks etc. needs special care and attention to keep them in tip-top condition. There's no better answer to the problem than a machine from the comprehensive range of

Hako
**All-purpose
SWEEPERS**

The Hako range of superbly engineered equipment offers the highest degree of efficiency and reliability.

The essential weight distribution factor is fully taken into account and models are available that maintain and clean surfaces to their original standard and include such essentials as coping to perfection with sand filled surfaces.



For comprehensive details send NOW

Hako HAKO MACHINES LTD
Leets Road, Far Cotton
Northampton
Tel: (0604) 63431

Please send literature
Visit of representative requested
arrange no—obligation demonstration

Company _____
Name _____
Address _____
Telephone _____

Reserves ACTION REPLAY



MIXED FORTUNES FOR TOWN RESERVES

OUR reserves began the season with a good 1—0 win at Portsmouth—thanks to an 86th minute goal by substitute Mark North—but came down to earth with a bump on Saturday when we lost 4—0.

Our action pictures from the Chelsea match show our young defenders under pressure from the Chelsea attack at Kenilworth Road.

The Portsmouth performance was a triumph for our young team on a hot and physically-demanding afternoon even though John Moore, the reserves coach, was left to comment—"Nice to start with a win even if our performance left much to be desired."

(Photos: Mike Pierce)

Youth Team

YOUNGSTERS SHOW FIGHTING SPIRIT

Luton Town Youth 3
Swindon Town Youth 3

AFTER going 1—0 down in the early stages of this South East Counties Junior League match against Swindon Town, our youngsters showed tremendous spirit to fight back to level terms and take the initiative.

In the 25th minute before half-time, we pulled back to equalise and then went on to go 2—1 and 3—2 ahead with the goals coming from Sean Farrell, Ian Scott and Paul Lewis—three of our bright young apprentices.

But we were unable to hang on to our lead and Swindon equalised late in the match. A draw was, however, an encouraging result for our team of 15- and 16-year-olds.

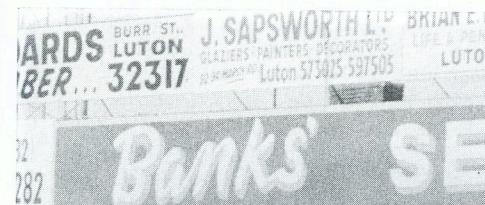


Sean Farrell

Team:

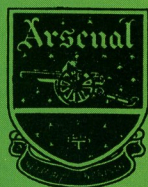
- | | |
|------------------|---------------------|
| 1. Mark Jones | 8. Mathew Bowden |
| 2. Jonathan Bone | 9. Sean Farrell |
| 3. Julian James | 10. John Kennedy |
| 4. Colin Barker | 11. Paul Lewis |
| 5. Duncan Berry | Subs: Neil Poutche, |
| 6. Ian Scott | Gary Williams |

Full-time 3—3; Half-time 1—1.



Introducing

Arsenal



AFTER a rumour-laden close season during which their captaincy was transferred from Graham Rix to Kenny Sansom, Arsenal have started the current campaign with a determination to put past troubles behind them and finish amongst the honours.

Publicity about a newly-enforced code of conduct at Highbury should not, however, be allowed to disguise the fact that Don Howe's shrewd capture of former England youth coach John Cartwright might turn out to be one of the summer's least-publicised, but most effective transfer coups.

One of the most widely-respected and innovative coaches in the English game, Cartwright will be aiming for nothing less than Arsenal's ninth League title this season.

In their opening games this term, the Gunners were beaten 2-0 at Anfield by Kenny Dalglish's Liverpool and then won 3-2 at home to Southampton in a thriller.

Players likely to be on duty tonight:

Ian Allinson—Stevenage-born Ian emerged as a scorer of vital goals last season when inconsistent form and injuries gave him a good run in the first team. He scored 11 in 30 appearances. A free transfer signing from Colchester in 1983.

Viv Anderson—Moved to Highbury in 1984 after proving himself at Nottingham Forest where he developed into an England player. Missed only one game last season during which he recovered his England spot.

Tommy Caton—Liverpool-born Tommy was Terry Neil's last signing for the Gunners. He joined from Manchester City in 1983.

John Lukic—John took over the goalkeeper's jersey from Pat Jennings last November and then went on to make 30 appearances. Joined from Leeds United in the summer of 1983.

Charlie Nicholas—Joined from Celtic in summer of 1983 after hitting 52 goals in Scotland the previous season. A Scottish international with 10 caps.



Arsenal manager Don Howe is one of the most respected coaches in English football and holds duties as the boss at Highbury and as England manager Bobby Robson's chief assistant. Wolverhampton-born, he played for West Bromwich Albion and Arsenal as right-back and won 23 England caps. He took over as Arsenal manager from Terry Neill in December 1983 after previously managing West Bromwich Albion and Galatasaray in Turkey.

David O'Leary—Arsenal's longest-serving player, Republic of Ireland centre-half, David has won 36 international caps and captained the Gunners in 1982 and 1983.

Graham Rix—Former England midfielder Graham has one of the most-educated left feet in the First Division. Spent last season recovering from an Achilles tendon injury.

Stewart Robson—Versatile, former England youth team captain, now an England under-21 regular, Stewart has all it takes to become a full international in the England midfield.

Kenny Sansom—One of the finest attacking left-backs in the First Division, Kenny is the new Arsenal captain. Played for England on summer tour of Mexico and now holds 56 caps.

Steve Williams—Former Arsenal fan, who grew up in Finsbury Park, Steve joined the Gunners from Southampton in a £550,000 deal last December.

Tony Woodcock—Arsenal's top scorer in each of his three seasons at Highbury following his arrival from Cologne in the summer of 1982. Tony is a full England international with 39 caps.

B. DOHERTY SKIPHIRE

34 MOUNT PLEASANT ROAD
LUTON

Telephone: 574633 & 574799

T. J. ALDRIDGE



Builders
• ROOFING SPECIALISTS • PLUMBING
• GENERAL BUILDING • PAINTING & DECORATING
• REPAIRS • CARPENTRY
• BRICKWORK • ELECTRICAL

302 Selbourne Road, Luton, Beds LU4 8NU

Telephone: 505412-505413



Media Men—official PR Consultants to Luton Town Football Club are proud to be associated with a winning team.

7 Albert Terrace, Union street
Bedford MK40 2SF Tel: 0234 213195

SHOREY'S FUELS

ANTHRACITE
PHURNACITE
COALITE
REXCO
HOMEFIRE
COAL



Your natural warmth from your local solid fuel merchant

28 Sheepfold Hill, Flitwick, Bedfordshire
Telephone: Flitwick 713289 Silsoe 60694

MARTIN SMITH MOTORS

Used Commercial Vehicle Sales

REPAIRS • SERVICING
MOT TESTING

199 Leagrave Road
Leagrave, Luton

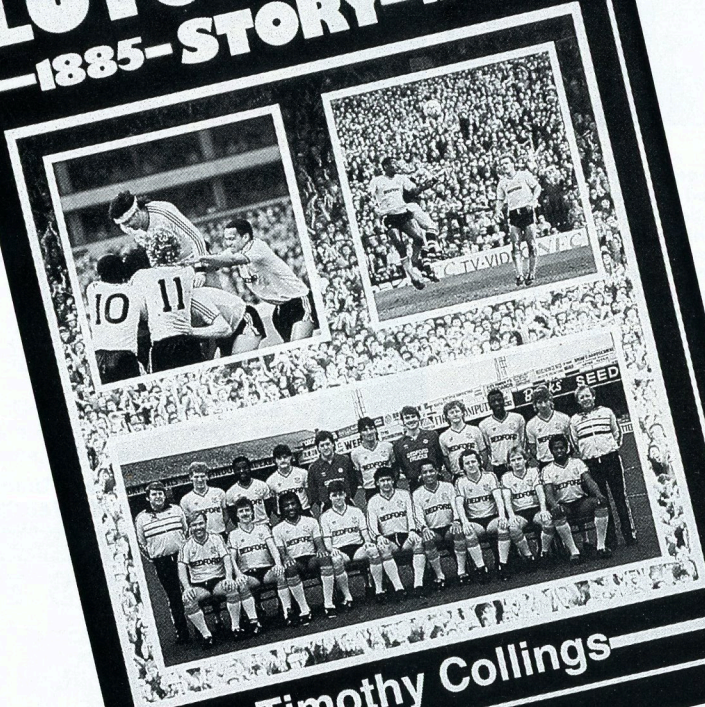
Telephone: Luton 574455 or 572806



Back row, left to right: John Lukic, Martin Hayes, Martin Keown, Chris Whyte, John Cartwright (First Team Coach), Don Howe (Manager), Roy Johnson (Physiotherapist), Tony Adams, Steve Williams, Tony Woodcock, Rhys Wilmot.
Front row: Viv Anderson, David O'Leary, Colin Hill, Paul Davis, Tommy Caton, Paul Mariner, Graham Rix, Charlie Nicholas, Stewart Robson, Kenny Sansom, Ian Allinson.

**A
MUST
FOR EVERY
LUTON TOWN FAN!**

THE LUTON TOWN —1885—STORY—1985—



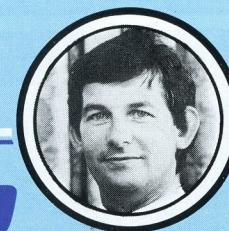
Timothy Collings

Price £12.00,
UK only.

412 pages. Complete statistical section. 8 page colour section. Many illustrations.
Available Thursday, 29th August from the Club's Commercial Office, Supporters' Shop and all leading booksellers.
Full of Luton FC information. All The Managers, The Great Players, The Great Games, etc.
Postal applications accepted.
Please add £3 p & p.



**JOHN
SMITH**



Club Comment

"We are all on trial"

WHAT an extraordinary close season for football and in particular ourselves it has been. So much has happened that it is difficult to know where to begin.

The Government intervention after the Millwall match is probably most appropriate. This has helped to breed the alcohol ban and the Popplewell Report. These in turn have drawn the Prime Minister, amongst others, into the hooliganism arena. An optimistic opinion could lead one to surmise that this will be the turning point (or crossroads).

We managed to persuade the Football Association to change its decision over Millwall, thereby exonerating our own supporters. Nevertheless, we are all on trial this season. Any problems within the ground or misbehaviour could cause the club severe problems. We appeal to all of you to be on the watch for troublemakers and report them to your stewards or the police who will take action. We are installing new police and St. John facilities, plus closed circuit television.

Inconvenience

We regret the inconvenience of early kick-offs and all-ticket matches. However, these are police requirements in an effort to control visiting supporters.

You will have seen the changes that have taken place during a very short close season. Many more are planned. Please let us have your thoughts.

The biggest change is, of course, the En-Tout-Cas Sporturf Professional Pitch sponsored by Bedford Trucks. This could well revolutionise the concept of using football stadia.

However, one thing hasn't changed and that is the proposed A505 relief road. This fundamental threat to our future well-being hangs over us like a guillotine, waiting to chop our life blood. With access lost at the rear of the main stand, plus the announced and anticipated requirements of the Popplewell Report, our ability to maintain a safe stadium without totally undermining our finances, stretches our imagination to its limits.

**EXECUTIVE
SPONSOR**

ANACHEM

TOP OF THE LEAGUE FOR LIQUID HANDLING



ANACHEM LIMITED

**20 Charles Street
Anachem House
LUTON**

Bedfordshire LU2 0EB

Tel: (0582) 456666

Telex: 825275

Welcome back to the Canon League.



This is the third season of the Canon League — Canon's sponsorship of the Football League Championship.

Canon's outstanding success in the high technology industries of cameras and business equipment has enabled them to support our national game with over £3 million.

The sponsorship money is shared between all 92 League clubs and is used to help keep admission prices down, encourage exciting attacking football with goalscoring awards and to provide recognition and financial

Canon (UK) Ltd., Canon House, Manor Road, Wallington, Surrey SM6 0AJ.

support to those clubs who do most to promote family attendances at Canon League matches.

In the 1984/85 Canon League season, the beautiful trophies pictured above — specially created by Garrard, the Crown Jewellers — were won by Everton, Oxford United, Bradford City and Chesterfield. This season, all 92 clubs will again compete for these most prestigious trophies in the toughest football competition in the world — the Canon League.



Official Camera
& Business Machines
of The Football League

ViEWS from the MEDIA

OUR first match on the new £350,000 artificial pitch, sponsored by Bedford Trucks, was closely watched by the media—and given a green light of approval. Here are some of the press reactions after our 1—1 draw with Nottingham Forest.

The Sun—"Forest should have been beached on Luton's sand-cushioned new plastic pitch. Luton manager David Pleat said 'We know we should have had two or three goals, but I saw enough to know we will be all right.' And that synthetic surface won over its critics. Luton's Peter Nicholas said: 'I was one of those who was against it, but it was fine. You can turn on it, the bounce is great and it's got everything'."

Daily Mail—"Ricky Hill loved it, Neil Webb hated it, but the consensus was that Luton's £350,000 artificial pitch is as close to the real thing as humanly possible. The biggest compliment I can pay is that by the end of this close, entertaining and highly-skillful game I had almost forgotten the surface was synthetic."

Daily Telegraph—"Our general opinion is that

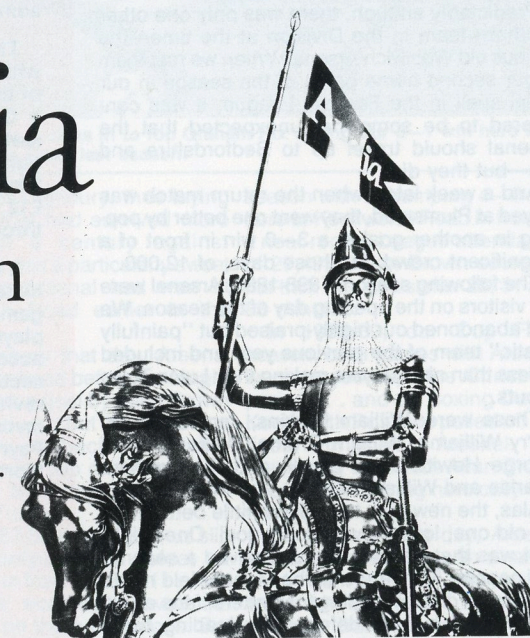
it is a good surface for playing good football on—nobody likes the ball bouncing about too much and Luton's new pitch has a lot less bounce than at Queens Park Rangers' said Peter Davenport, Forest's England striker." *Sunday Telegraph*—"In the opening stages, Luton played as if born to the new £350,000 surface with Hill in particular relishing its even and reliable bounce."

The Star—"Nottingham Forest manager Brian Clough does not normally make a beeline for opposing players after games. But he did after the 1—1 draw at Luton. He directed himself into Brian Stein's path to tell him: 'A lovely goal, son. A lovely goal'."

Luton News—"The artificial pitch received praise from almost everyone concerned after making its League debut at Kenilworth Road. and that was despite the fact that it is not yet at its best. Manufacturers En Tout Cas said that the sand level had been left deliberately high, but more games and the action of rain would result in the sand bedding down and the pitch would then be completely green and look like natural grass."

Anglia Television

Proud to serve
the
East of England.





Gordon Turner, who scored with a penalty in our first victory over Arsenal in the 1956-57 season, went on to become our finest goalscorer with 243 League goals in a distinguished career at Kenilworth Road.

THE LUTON TOWN STORY



ONE of the greatest milestones in the history of Luton Town Football Club was reached on April 11th, 1985, when we celebrated our 100th birthday, two days before that stirring FA Cup semi-final against Everton at Villa Park.

This season we are celebrating our Centenary with a series of events including the publication of the official history of the club, the launch of a Centenary Club and this series of special features which will spotlight great moments in our past. The official history, *The Luton Town Story*, is published by the club and on sale, price £12, at the club offices and bookshops throughout the area.

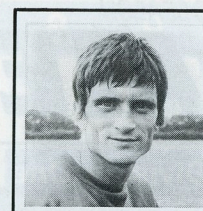
It contains a fully-documented and illustrated history of the club, full reports of all the great games, detailed sketches of the most prominent players, managers, directors and staff and is accompanied by a fully researched statistical section. The book, like this series of features, will revive old memories and bring long forgotten favourites vividly back to life—Bob Hawkes, Joe Payne, Hugh Billington, Gordon Turner, Bob Morton and many more.

Order your copy now to avoid disappointment—it's a book every supporter will be proud to read.

(continued on next page)



Alec Stock, our manager between 1968 and 1972 when we won promotion from the Third Division and built a powerful Second Division team, was also once on the staff at Highbury where he enjoyed only a brief spell before being lured to Roma in Italy.



Jimmy Ryan, scorer of one of the two goals which brought us a well-earned 2-0 win over Arsenal here in the 1974-75 season. Jimmy, one of the first midfield-cum-wingers to play for the Town, scored from the penalty spot and the second goal came from Ron Futchner.

Yesterdays

Our wretched form continued the following season when, at home, a 4,000 crowd saw James Dow equalise for us from the penalty spot, but was disappointed again as Arsenal went on to win. The away game was the final League match between us for 55 years and took place on January 6th, 1900. Again, it was an Arsenal victory—3-1—in an encounter remembered as the debut of left-winger Dimmock.

Not until 1955-56 did our paths cross again when 24,009 saw us hold our own and draw 0-0 at home and 45,968 saw the Gunners win 3-0 at Highbury. Of course, the Arsenal's famous luck just had to end sometime, we kept on saying, and in due course it did.

The first win finally came in the 1956-57 season when we triumph-



Mick Harford dives in to rob Graham Rix during our 3-1 win here at Kenilworth Road last season.

ed 3-1 at Highbury, thus laying a bogey that had survived more than half a century against Arsenal. It was a particularly sweet victory as Arsenal had won at Kenilworth Road earlier in the season.

At Highbury that day, Arsenal had gone ahead before we fought back to see a goal by Allan Brown disallowed . . . but it was only a temporary setback as Brown followed with two cracking goals added to by a late penalty from Gordon Turner.

The 1957-58 season saw us slip to an early-season defeat at Highbury in front of a 50,111 crowd when the woodwork saved the Gunners on three occasions. But we exacted full revenge later in the

season with a thumping 4-0 win here at Kenilworth Road in front of a near-record League attendance of 27,493. Allan Brown scored a hat-trick with goals after 23, 31 and 83 minutes.

In 1958-59, our Cup Final season, both games with Arsenal were played over the Christmas period . . . and on Boxing Day at Kenilworth Road we pulled off our finest win against Arsenal. The result was 6-3 with Allan Brown once again figuring heroically with two goals.

On the following day, Arsenal gained their revenge with a narrow win in front of 56,501 fans, but we were hit badly by injuries to Seamus Dunne and Syd Owen who were missing from the team.

A summary of our League matches against Arsenal. (Luton score first)

	Home	Away				
1897-98	0—2	0—3				
1898-99	0—1	2—6				
1899-00	1—2	1—3				
1955-56	0—0	0—3				
1956-57	1—2	3—1				
1957-58	4—0	0—2				
1958-59	6—3	0—1				
1959-60	0—1	3—0				
1974-75	2—0	2—2				
1982-83	2—2	1—4				
1983-84	1—2	1—2				
1984-85	3—1	1—3				
	P	W	D	L	F	A
Home	12	4	2	6	20	16
Away	12	2	1	9	14	30
Total	24	6	3	15	34	46

First Team

1985-86 SEASON

UPDATE

Canon League Division One

	P	W	D	L	F	A	W	D	L	F	A	Pts
1 Manchester U.	4	2	0	0	6	0	2	0	0	3	1	12
2 Sheffield Wed	4	1	1	0	3	2	2	0	0	4	1	10
3 Newcastle	4	1	1	0	3	2	1	1	0	3	2	8
4 Liverpool	4	2	0	0	7	0	0	1	1	2	3	7
5 Chelsea	3	2	0	0	3	0	0	1	0	1	1	7
6 Everton	4	1	1	0	3	1	1	0	1	2	3	7
7 Watford	4	2	0	0	8	1	0	0	2	1	6	6
8 QPR	3	1	0	0	1	0	1	0	1	3	4	6
9 Birmingham C.	4	2	0	0	4	1	0	0	2	0	5	6
10 Oxford Utd	4	1	1	0	6	1	0	1	1	2	4	5
11 Luton Town	3	0	1	0	1	1	1	1	0	3	2	5
12 Manchester C.	4	0	1	1	2	4	1	1	0	4	3	5
13 Tottenham	4	1	0	1	4	1	0	1	1	1	2	4
14 Nottingham F.	3	1	0	1	2	2	0	1	0	1	1	4
15 Leicester City	3	1	0	0	3	1	0	1	1	1	6	4
16 Arsenal	3	1	0	1	4	4	0	0	1	0	2	3
17 West Ham	4	1	0	1	3	2	0	0	2	0	3	3
18 Ipswich Town	4	1	0	1	1	1	0	0	2	0	6	3
19 Coventry City	4	0	1	1	2	3	0	1	1	1	2	2
20 Southampton	3	0	1	0	1	1	0	0	2	3	5	1
21 Aston Villa	3	0	1	1	3	4	0	0	1	0	4	1
22 West Brom	4	0	1	1	3	4	0	0	2	1	7	1

League table as August 26th, 1985

LEAGUE APPEARANCES and GOALSCORERS
Appearances Goals

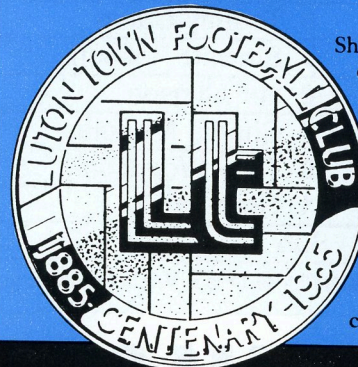
T. Breacker	1	
A. Dibble	3	
M. Donaghy	3	
P. Elliott	2	
S. Foster	1	
A. Grimes	1	
M. Harford	3	2
R. Hill	1	
R. Johnson	1	
P. Nicholas	3	
S. North	(1)	
E. Nwajobi	3	1
G. Parker	2(1)	
D. Preece	3	
B. Stein	3	1
M. Thomas	3	

Luton Town

	FA	Att	Pos	1
Aug 17 Nottingham Forest	1—1	11,381	—	Dibble
Aug 21 Newcastle United	2—2	21,304	—	Dibble
Aug 24 West Ham United	1—0	14,104	11	Dibble
Aug 27 Arsenal				
Aug 31 Aston Villa				
Sept 7 Chelsea				
Sept 14 Everton				
Sept 21 Queens Park Rangers				
Sept 28 Sheffield Wednesday				
Oct 1 Ipswich Town				
Oct 5 Manchester United				
Oct 12 Oxford United				
Oct 19 Southampton				
Oct 26 Liverpool				
Nov 2 Birmingham City				
Nov 9 Tottenham Hotspur				
Nov 16 Coventry City				
Nov 23 Watford				
Nov 30 Manchester City				
Dec 7 Newcastle United				
Dec 14 Nottingham Forest				
Dec 21 West Ham United				
Dec 26 West Bromwich Albion				
Dec 28 Ipswich Town				
Jan 1 Leicester City				
Jan 4 FA Cup Round 3				
Jan 11 Chelsea				
Jan 18 Aston Villa				
Jan 25 FA Cup Round 4				
Feb 1 Arsenal				
Feb 8 Southampton				
Feb 15 Liverpool (FAC5)				
Feb 22 Queens Park Rangers				
Mar 1 Sheffield Wednesday				
Mar 8 Manchester United (FAC6)				
Mar 15 Oxford United				
Mar 22 Everton				
Mar 29 Leicester City				
April 1 West Bromwich Albion				
April 5 Birmingham City (FAC s/f)				
April 12 Tottenham Hotspur				
April 19 Coventry City				
April 26 Watford				
May 3 Manchester City				

©Copyright of The Canon League

2	3	4	5	6	7	8	9	10	11	12
Breacker Thomas Johnson	Thomas Grimes Thomas	Nicholas Nicholas Nicholas	Foster Elliott Elliott	Donaghy Donaghy Donaghy	Hill* Parker Parker	Stein1 Stein Stein	Harford Harford1 Harford1	Nwajobi Nwajobi1 Nwajobi	Preece Preece Preece	Parker North

Join the Luton Town F.C.
Centenary Club.

Share in our 100th anniversary celebrations by joining the Luton Town F.C. Centenary Club and get this superb limited edition Centenary Medal free. You will also receive every home match programme, two tickets for any home league match (subject to availability), an exclusive inside-track newsletter, priority availability for International and cup match tickets and much more...

Ring David Pleat on
Luton (0582) 594466
for all the details!

MC = Milk Cup FAC = Fa Cup *Indicates player substituted Home fixtures in bold Scorers name in bold + Own goal

THERE IS NO SUBSTITUTE.

 **adidas**
THE WORLD'S LARGEST SPORTSWEAR MANUFACTURER

Photos by
Gareth OwenEditor:
Robert Alexander

Vauxhall Teamcheck

Luton Town

- 1 Andy Dibble
- 2 Mitchell Thomas
- 3 Ashley Grimes
- 4 Peter Nicholas
- 5 Steve Foster
- 6 Mal Donaghy
- 7 Ricky Hill
- 8 Brian Stein
- 9 Mick Harford
- 10 Emeka Nwajiobi
- 11 David Preece
- Sub

Arsenal

- 1 John Lukic
- 2 Viv Anderson
- 3 Kenny Sansom
- 4 Steve Williams
- 5 David O'Leary
- 6 Tommy Caton
- 7 Stewart Robson
- 8 Ian Allinson
- 9 Charlie Nicholas
- 10 Tony Woodcock
- 11 Graham Rix
- Sub

Referee: A. SEVILLE Linesmen: J. M. TYTHCOTT (Red Flag) V. H. WOOD (Yellow Flag)

THE ROVERS' TEAM COACH.



THE NEW VAUXHALL ASTRA ESTATE.

Remember, we got here first.



Designed and printed by Alpine Press. Kings Langley, Herts.

Luton Town Football & Athletic Co. Ltd
MATCH SPONSOR HAKO MACHINES LTD

THE FACE OF THIS DOCUMENT HAS A COLOURED BACKGROUND

LUTON TOWN V. ARSENAL
TUESDAY 27TH, AUGUST 1985

CANON
LEAGUE.
DIVISION
1



KICK
OFF.
7-45P.M.

PRICE
(INC. VAT)

OAK ROAD TERRACE
ENTRANCE

£3.00 02 0949 SECT. 03

THE BACK OF THIS DOCUMENT CONTAINS AN ARTIFICIAL WATERMARK

TO BE RETAINED