

Official Programme
Price £1.00

LUTON TOWN



Today's match is sponsored by:

**BEDFORD
TRUCKS**

CANON LEAGUE DIVISION ONE
Luton Town v. Nottingham Forest
Saturday, August 17th, 1985
Kick-off 3.00 p.m.

EVEN THE PRICE IS A GOOD LOOKING NUMBER.



BEDFORD'S NEW MIDI.

BEDFORD 
Now the driving force.



LUTON TOWN

Welcome you all to our Centenary Season!

Chairman
David Evans

Directors
T. W. Bailey, R. L. Banks,
E. S. Pearson, D. Pleat,
R. J. Smith, J. R. Smith,
M. A. Aleyan

Chief Executive
John Smith

Manager
David Pleat

Company Secretary
Graham Mackrell

Commercial Director
Bill Tomlins

Designed and printed by Alpine Press, Kings Langley, Herts.

President
J. A. C. Bain

Honorary Life Members
J. Richardson, T. Hodgson

Vice Presidents
A. G. Berry FCCA,
C. Bygrave, C. J. Evans,
B. Cole, E. Fountain,
C. Holloway, I. E. Holmes,
L. Leppington, R. Larkinson,
R. Safranek, R. Unwin,
E. Waller

HONOURS

FA CUP FINALISTS 1958-59
CHAMPIONS—DIVISION 3(S) 1936-37
RUNNERS-UP—DIVISION 3 1954-55
CHAMPIONS—DIVISION 4 1967-68
RUNNERS-UP—DIVISION 3 1969-70
RUNNERS-UP—DIVISION 2 1973-74
CHAMPIONS—DIVISION 2 1981-82

100 Years On

WELCOME to our Centenary season. We shall begin today our efforts at Luton to help you enjoy a peaceful enjoyable season. If we are successful, fine: if not, let us all learn to be proud of our great game and to act as ambassadors of football. I sincerely hope the damage has been concluded. Let no-one ignore their responsibilities: managers, players, spectators, press, police or Government.

Our club is fortunate. We have a chairman and board who have retained optimism. We have magnificent sponsors, Bedford Trucks, with whom we are proud to be associated. We have an image of playing good football in a sporting manner. We have supporters who can enjoy good results because they have learnt to tolerate and understand the bad results.

Only last week I saw things that made me believe we can overcome our problems. At Bournemouth we had an exciting friendly where both sides attacked skilfully as five brilliant goals were scored. Before the game children wandered the pitch getting autographs. Two days earlier at Plymouth we completed our fifth friendly with no bookings and the opposing manager coming into our dressing room for a laugh and a joke.

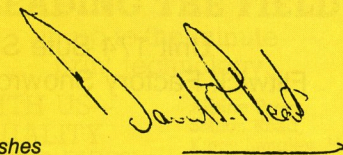
A new season is always exciting but a Centenary is special, particularly with the inauguration of our new synthetic En Tout Cas pitch. The pitch has been made possible by Bedford Trucks and our aim is to give season-ticket holders a chance to see and participate in a variety of sports and events as we aim to become a top family club.

Our players will benefit from last years effort. At this moment we have not increased our



squad and have lost two players under freedom of contract. Frank Bunn has joined Hull for £40,000 and Wayne Turner Coventry City for £75,000. We wish them every success. We have signed nine new apprentices and I am delighted with their prospects. John Faulkner has joined our staff as Youth Coach and his experience and enthusiasm will be invaluable. Paul Elliott is now playing and will challenge for a first team spot.

Today we meet Nottingham Forest who have a habit of beating us. Can they do it again? They have bought expensive players—emphasising their manager's optimism. I need write no more. The message is clear. Let us work together to ensure a wonderful season of goodwill.



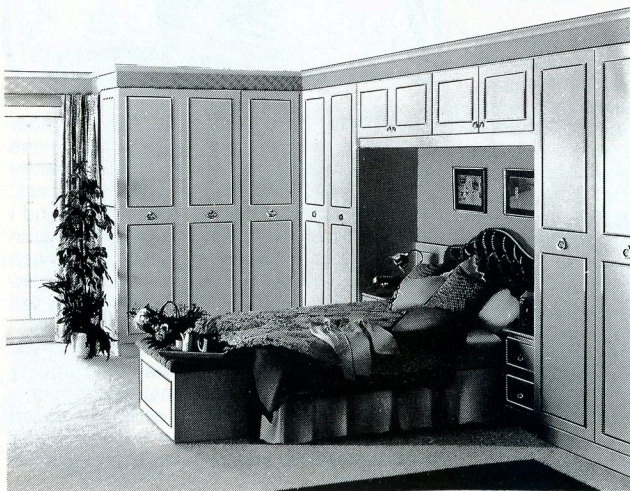
Best wishes

If you want to know the score about fitted bedrooms, look at the scoreboard.

Wallspan Fitted Bedrooms offer you style and elegance at a realistic price.

Our range of fully fitted furniture will grace any home and blend with any decor.

Free design, free delivery, free fitting and a full five year guarantee make Wallspan Fitted Bedrooms the top of the league.



**Wallspan
Bedrooms**



Throughout the UK

Unit 174 Bute Street, Arndale Centre, Luton
Flitwick Factory Showroom and Head Office: 0525 716161

GirlTalk

LAST season Luton Town commissioned a survey to find the views of lady supporters. Nearly 300 were questioned in all sections of the ground before the matches against Huddersfield and Spurs. Our Chairman Mr. Evans took the responses you gave seriously; hence the improved toilets for the Oak Road Terrace and the proposed increase in the family enclosure. Another request was for a Women's Page in the matchday programme to reflect the interest of women supporters and provide gossip from around the club! If there's anything in particular you'd like to see in this column just drop me a line at the club.

A couple of weeks ago I went to the pre-season friendly at Wimbledon. It was good to see so many Luton supporters there. The wags in the crowd were present as usual—shouting to the Wimbledon players who were heard to swear: "Watch it, this a family game!" And their comment was justified when one noted the number of women and families in the crowd; particularly among Luton supporters. I asked some of the female supporters why they had bothered to go all the way to Wimbledon just for a friendly. One lady I spoke to was typical. She said she was a season ticket holder of many years' standing, loved the game, and always went if she could. She usually goes to games on her own, too.

The game itself was bitty, as you'd expect when substitutes were used to give the manager ideas for combinations for the future. I was surprised how much Peter Nicholas had changed—until I realised that it was Rob Johnson who was wearing the number four shirt! I need new contact lenses! The overwhelming impression left by the game was that the Town were playing well within themselves. This augurs well for the new season.

Gale Waller

Anyone wanting to contribute to Girl Talk please write to:

The Editor,
Luton Town FC,
Kenilworth
Road,
Luton.



Executive members

- ★ ANACHEM LIMITED
- ★ MR. W. ASHBURNER
- ★ BEARD & MANNING CATERING SERVICES LTD.
- ★ BEDFORD COMMERCIAL VEHICLES
- ★ BERVALL MEAD INSURANCE BROKERS LTD.
- ★ W. J. BILLINGTON LTD.
- ★ BLAKEY ENGINEERING CO LTD.
- ★ BERKELLY ASSOCIATES
- ★ BLUE ARROW plc
- ★ BRENGREEN HOLDINGS plc
- ★ BROAD STREET PRINT
- ★ B.R.I. INVESTMENTS LTD.
- ★ CANVERMOOR plc
- ★ COUNTY MOTORS LTD.
- ★ GARY CHAMBERLAIN WINDOW FASHIONS
- ★ CAPITAL METALWORK LTD.
- ★ DUPONT (UK) LIMITED
- ★ FILMERGRAPHIC PRESS LIMITED
- ★ F. W. PEARCE BUILDERS LTD.
- ★ BRIAN E. HANDSCOMBE Life & Pension Brokers
- ★ E. W. HUDSON (HOLDINGS) LTD.
- ★ IVOR HOLMES LTD.
- ★ INFORMATION TECHNOLOGY LTD.
- ★ MARK JAMES (SALVAGE) LTD.
- ★ JOHN LAING CONSTRUCTION LTD.
- ★ RICHARD C. LARKINSON (CAMBRIDGE) LTD.
- ★ MR. P. LAYCOCK
- ★ LUTON BATHROOM & TILE CENTRE
- ★ LONDON PROVINCIAL CONSTRUCTION LTD.
- ★ MILCUT ENGINEERING LTD.
- ★ NEAHURST LTD.
- ★ OPELVALL GROUP
- ★ MR. & MRS. S. PEARSON
- ★ DR. & MRS. G. L. PLESTER
- ★ PRIORY FARM FOODS
- ★ PETERS GRAVES & CO.
- ★ DAVID RAND & CO LTD.
- ★ RICHARDSON & BOTTOMS LTD.
- ★ ROGERS RESIDENTIAL SALES
- ★ RAVENMERE LTD.
- ★ REDBOURNE CONSTRUCTION
- ★ SHAW & KILBURN
- ★ SHOREY'S TRAVEL
- ★ MR. & MRS. D. SHERIDAN
- ★ W.S. TYREMASTERS (Division of West & Sellick (Tyres) Ltd.)
- ★ TRITRADE LTD.
- ★ TILDAE INVESTMENTS LTD.
- ★ R. W. UNWIN
- ★ VAUXHALL MOTORS LTD.
- ★ WALLSPAN BEDROOMS
- ★ WEBBEX LIMITED
- ★ YARNFIELD LTD.

THE FULL ADDRESSES AND SERVICES OF OUR EXECUTIVE MEMBERS CAN BE OBTAINED THROUGH OUR COMMERCIAL OFFICES—LUTON TOWN FOOTBALL CLUB.

Alpine Press

LEADING THE FIELD

in up-to-the-minute
print technology.

WITH US—
QUALITY
COMES FIRST

Alpine Press,
Station Road,
Kings Langley, Herts.
(09277) 69777

Mail Bag

Thank you
for your letters

Please Sir!

Dear Sir,
*I used to be a Hatter,
And I didn't get a ball,
Now I'm in the mainstand,
I haven't a chance at all,
All the balls are thrown
by players,
To the men in Lower Layers,
I therefore ask a treat for a
ball,
From Mr. Pleat.
Ben Timmey (12)
Houghton Regis, Dunstable.*

Sincerely

Dear Sir,
THE colts recently held their second presentation evening and I was able to arrange for John Wilkinson, Paul Elliott and Mitchell Thomas to attend as representatives of your club. Will you please pass on to them our sincere thanks for being such excellent ambassadors of the club. Again over 400 people attended our function. May I take this opportunity to wish you all the success in what I am sure will be a very successful season for the club during 1985-86. With kindest regards.

Richard Moore
Vice-Chairman, Harpenden Colts FC, Harpenden.

Good conduct

Dear Sir,
AT our recent presentation evening and disco we were extremely fortunate to have had the pleasure of Wayne Turner attending and making the presentations to our five football teams.

The boys were most impressed with the conduct and comments and advice given by Wayne, and personally it was a great pleasure to have had the opportunity of entertaining him.

Pat Nicholson
Kempston Reds Youth Football Club.

Raffle

Dear Sir,
YOU may recall that some weeks ago I asked your players to sign a football to be raffled on behalf of the victims of the Bradford City Fire. You will be pleased to learn that the result a cheque for £83.30 has been donated to the fund. May I take this opportunity to thank you for your help in a most worthwhile cause.

Kevin Jones
Priory Middle School, Dunstable

Positive steps

Dear Sir,
I WOULD like to inform your readers of one of the positive developments to have taken place during the summer, the formation of a new nationwide supporters club for genuine fans, concerned for the future image of our national game.

The aims of the club are:—

1. To promote friendship and sportsmanship between rival supporters.
2. To assist the police and ground officials in their efforts to rid our grounds of the hooligan element.
3. To improve the image of the game and its supporters.
4. To unite all genuine football supporters.

Anyone wanting further informa-

tion should write to Supporters United P.O. Box 89, Reading, RG6 3LA enclosing a stamped addressed envelope.

May I also take the opportunity to wish all your genuine supporters a peaceful and successful season.

A. R. Russell
Reading

Thank you

Dear Sir,
JUST a brief line to thank you for bringing your team to Plough Lane for our recent pre-season friendly, which turned out to be a very competitive and enjoyable evening for all involved.

May I also take this opportunity of wishing you every success during the forthcoming season.

With kind regards.

David Bassett (Manager)
Wimbledon FC.

Thanks

Dear Sir,
ON behalf of the young boys of St. Josephs I'd like to say thanks to Mitchell Thomas for presenting the club's trophies.

Annette,
St. Josephs Youth Football, Luton.

Glut of goals

Dear Sir,
WITH the new season about to get under way and everyone feeling optimistic about our chances this year, wouldn't it be lovely to see a "glut" of goals from the Town players this term. We all saw the potential of the team to do just that in the Leicester match at the back end of last season. I'm sure that if Mr. Pleat manages to acquire a skilful, pacey winger, then Mick Harford and Brian Stein will be the scourge of all defences.

Yes, Luton Town FC are all geared up for success this year and everyone at the club deserve a "pat-on-the-back" for being so positive in making our club one of the best, in this it's Centenary season.

All the best lads.

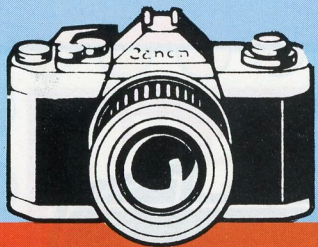
Geoff A. Evans, Worksop.

Heineken

Refreshes the parts
other beers cannot reach.

Luton News

SPORT AND MOTORING
Town Match Verdict
BREAKS
B DUCK
Details
The Best Sports Pages in Town!
BRIAN SWAIN,
ERIC NORRIS,
DAVID PLEAT,
MARK RICHARDS
THURSDAYS 14p



First Team ACTION

BRIAN Stein has been the Town's man in form during our pre-season friendly matches. Brian has scored in each of our three fixtures at Wimbledon, Plymouth Argyle and Bournemouth and looked sharp and ready for the new term starting today. Last Saturday, we were beaten but provided splendid entertainment in the South coast sunshine at Dean Court where Mal Donaghy put us ahead with a tremendous drive in the opening minutes. The early goal was not enough to sink the Bournemouth players' morale however and they came back to make a real contest of the match in the second half, during which they scored three times as Brian struck with his third goal in three games. Our England striker may also be pressing to take over the duties as chief penalty taker again this season after standing by and seeing Mick Harford miss from the spot during our 1—1 draw at Wimbledon. Had Mick managed to convert his chance we would surely have cruised to victory. Brian had shown his appetite for goals with headers at both Wimbledon and Plymouth in the earlier matches, the clash at Home Park being played in a roaring gale and pouring rain which did nothing to help the playing conditions. At least the players are certain of a true sur-



ACTION REPLAY from

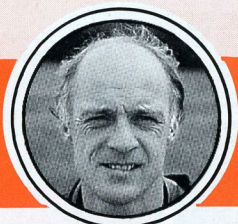
Dean Court



Steve Foster, Peter Nicholas and Brian Stein show their strength during our pre-season friendly fixture against Bournemouth last week.

(Photos: Gareth Owen)





JOHN FAULKNER

ViEWS

from the bench

AFTER experience playing in England and America, former Town favourite John Faulkner returned to Kenilworth Road this summer as the new youth team coach. Today in the first of a new series, he explains why he is so pleased to have "come home" again. Born in Orpington in 1948, John made 209 League appearances for the Town between 1972 and 1977.

"Coming back to Kenilworth Road after seven years away playing in the United States, coaching youth teams and finally managing nearby Barton Rovers is a bit of a dream come true for me. I never actually sold my house here in Luton in all the time I was away and have always looked upon it as home after spending so many happy years here in the 1970's.

I left for America in March 1978, not long after David Pleat took over as manager, but it was something I had planned for a long time beforehand.

The experience was marvellous for me and it has given me an insight into all sorts of ways of making the game a much more marketable product for our fans in England. But it still came as a shock, a bolt out of the blue, when David Pleat asked me to come back—and of course I was only too pleased to say yes!

I spent nearly five years in America as a player, but was always interested in the coaching side of the game and got involved in quite a lot over there. I had taken my preliminary coaching badge while I was here at Luton before so it was a natural progression.

I've always been in love with football and it made me more determined to try and stay in

the game if I could so, when I came back I was hoping something might turn up.

I was offered the chance to coach the Bedfordshire under-18 youth team and the under-16 youth team and thoroughly enjoyed it. I'm sure it had a lot to do with the Manager giving me my chance here this season.

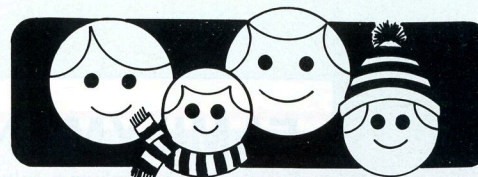
For a time I had a full-time job and managed both the Beds youth sides and Barton Rovers all at once! It was very busy but great fun. I was out and about all the time.

I think the game has changed a lot in the 10 years since I was playing here. But the changes are all for the best. When I was playing it was so different and all the big stars were show business style personalities who made the headlines—players like Best, Hudson, Osgood and so on.

Now I think players are more responsible and I think the whole of the English game is much more responsible about itself and the future.

That is especially true here where we have always had a reputation for playing pure football and looking after people properly. I started off as a schoolboy with Charlton Athletic when I was 12 or 13 and I was released at 18, so I know what it is all about. I had to come back the hard way really through non-League football with Sutton United before I was signed by Leeds United and later moved here.

Everyone knows now that you have to work hard at your living to succeed and that is just as true in football as it is in any other job. That's what I've always done and I hope all our young players will do the same. I still believe in the game and I think it has a great future."



Club News

JOYCE ELLIS

It is with deep regret that we have to announce the death of Mrs. Joyce Ellis who worked in our souvenir and travel department. Joyce joined the company six years ago and was a cheerful and helpful member of staff. Her whole interest in life centred around the club and her optimistic way of life will be sadly missed by all her many friends and colleagues.

PRE-MATCH ENTERTAINMENT

Seven different sports will be on show in today's pre-match entertainment. These include Gaelic Football, presented by St. Dymnys Gaelic F.C., Ladies' Football from teams from the Home Counties' Ladies League and American Football, as displayed by Luton Flyers. There will also be displays of hockey, netball, basketball and bowls from the Chiltern Ladies and Bedfordshire Eagles hockey clubs, the Vauxhall Golds netball club, a Luton Select basketball club and the Airport Bowls Club.

ENJOY THE MATCH

The first in our Centenary season

MATCH BALL SPONSOR



The Bletchley Bobbers are a satellite branch of the Luton Bobbers Stand and Supporters' Club and they are our ball sponsors today.

TODAY'S REFEREE

John Martin (Alton).



John is a credit control manager and married with a teenage son. He is interested in all sports. He began refereeing in 1958 and progressed via local leagues, the Surrey Senior League and the Isthmian League to the Football League. He was appointed to the FIFA panel in 1984. He was in charge of our FA Cup semi-final against Everton at Villa Park last April.

RESULTS OF OUR PRE-SEASON GAMES

		1st Team		Res	HT	Scorers
August						
5	Wimbledon	(D)	1—1	1—1		B. Stein
8	Plymouth	(W)	1—0	0—0		B. Stein
10	Bournemouth	(L)	2—3	0—1		M. Donaghy, B. Stein

		Reserve Team		Res	HT	Scorers
August						
3	St. Albans	(W)	3—1	1—1		M. North (2), M. Stein
6	Bishops Stortford	(D)	1—1	1—0		M. North
10	Dunstable	(D)	2—2	0—2		Christoffer, M. Stein

		Youth Team		Res	HT	Scorers
August						
8	Potten	(L)	1—2	1—1		M. Johnson
10	FC61	(L)	2—4	1—3		R. Harvey, P. Lewis

FORTHCOMING MATCHES at Kenilworth Road



Football Combination

Saturday, August 24th

Luton v. Chelsea Kick-off 2 pm

Canon League Division One

Tuesday, August 27th

Luton v. Arsenal Kick-off 7.45 pm

HOTLINE
Luton (0582)



Office Hours 9 am-5 pm
411622

Stadium Hire: Mike Beevers,
Stadium Sales Manager, 411622

Advertising & Match Sponsorship:
Wendy Greaves, Marketing
Executive, 411622

Souvenirs—Travel—Junior
Hatters: 412418

Match Tickets & Match Enquiries:
Bev Tyler, Retail Sales Supervisor,
30748 (24 hr service) 33010

Banqueting & Function Facilities:
Clive Hustwit, Catering Manager,
411526

Promotions Office: John Gornall,
Development Executive
Top Score—John Dollimore, Pools
Promoter, 411622

sapsworth
GLAZING & DECORATING
SPECIALISTS

Glazing Repairs and Glass Supplies
Patio Door and Window Installations
Double Glazing (Secondary and Sealed Units)
Interiors and Exterior Decorators

For Domestic and Commercial enquiries contact
Luton 573025/597505
For 24 hour Emergency Service contact Dunstable 666665
J. Sapsworth Ltd., 92 Marsh Road, Luton, Beds LU3 2NL

MAL
DONAGHY

TOP HATTER



Mal Donaghy signed for the Town in the summer of 1978 and has since proved himself to be one of manager David Pleat's shrewdest acquisitions, adding steel, pace and class to the defence, and occasionally the midfield. In that time he has become an institution in the Northern Ireland team, played in the World Cup Finals in Spain in 1982 and won a deserved reputation as one of the most reliable players in the First Division. Born in Belfast, Mal came to Kenilworth Road from Larne. He has won 36 international caps.

FAMILYMAN

Family life has always taken first place in Mal Donaghy's busy life and it always will. His love of children and a peaceful home have made him acutely aware of all the problems in his native Northern Ireland and keen to return whenever possible and help in any way he can. But being a busy First Division and international player sometimes makes it difficult for our dependable number six.

"I have two children, Ciaran, who is three and a half, and Fiona, who will be two in October, and a lovely wife Marette. They are most important to me. I try to be home as much as I can and to take them with me on as many of my trips as possible, but, of course, I cannot always manage it.

"Luckily, my old landlady often pops in to see Marette if I am away and we have a lot of friends as well. The only other times I am likely to be out are for a game of snooker—my only real hobby apart from crosswords. All my interests are based in my family or Ireland otherwise.

"When I am finished as a player I cannot see myself staying on in the game. I expect I will go into youth work or something back home in Northern Ireland. I love kids and that is something I could do. Barry McGuigan has done a tremendous job that way really during the summer when he made all the news. He has managed to combine his sport with something really special for Ireland and I would love to be able to follow his example."





the TOWN

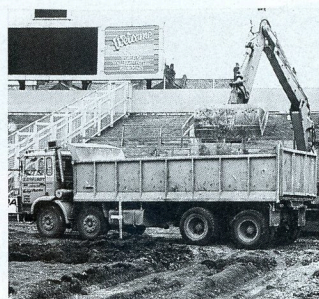
by Bill Tomlins

THE financial realities of football at Kenilworth Road are frighteningly simple: Luton Town have to meet a First Division average wages bill, with half the average number of fans coming through the turnstiles.

That means the Club's commercial activities are not simply the icing on the cake. Therefore we must make the best use of every commercial possibility, whether by selling advertising on the players' shirts or making our home matches the focus of business entertaining.

However, until this—our Centenary Year—we have been unable to fully utilise the biggest asset of all, our pitch. What other business enterprise would keep its prime asset permanently idle, except for a couple of hours on 20-odd afternoons a year? But we were restricted by the paramount need to maintain the playing surface.

Now we have found the answer. Our £350,000 synthetic pitch, sponsored by Bedford Trucks, really does provide a perfectly true all-weather playing surface for our matches which, at the same time, can be used for all manner of lucrative activities throughout the rest of the week.



Thanks to our superb new artificial pitch, Luton Town F.C. can be the perfect centre for a wide range of commercial and community activities.

The resilience of the new pitch will make it much easier for us to put on major events like pop concerts, big religious crusades, boxing tournaments. The washable surface means we can mark out the lines for any sport, any mass spectacular event.

The activities on the ground during the close season have enabled us to play our first game of the Centenary season on our new surface today. Our picture shows the different construction stages of our new surface.

To mark the opening of our new synthetic pitch today we are pleased to present, in conjunction with Luton Recreation Services, an example of the many activities that our new synthetic pitch has to offer.



TODAY'S SPONSORS—BEDFORD TRUCKS

Bedford Commercial Vehicles—as Luton Town's principal sponsor—has become very much part of the Kenilworth Road scene in the past three seasons. In fact, while the company has never allowed the grass to grow under its feet, Bedford has actually become part of the "grass" this year!

For, in a novel—and striking—approach to keeping their name to the fore, Bedford's "signature" has been woven prominently into the brand-new synthetic playing surface.

Bedford is not only being

highlighted on the pitch these days. In the tough world of the commercial vehicle market-place the company has been bringing on stream a string of new facility and product developments.

To consolidate and build on its place in the first division of UK vehicle manufacturers, Bedford have opened a new van assembly facility in Luton; instituted an advanced, computer-aided design activity; brought in to production the CF2 medium van and the CF Electric van (a world "first"); introduced a new "air-suspended" coach chassis;

offered advanced factory-built aerodynamic truck designs based on the TL Techliner and ended 1984 with the production of the new Midi series of 1-ton vans.

The first half of 1985 has seen the major launch programme for the Midi and plans are in hand to maintain the exciting pace of new product development.

So, while Luton Town gears up to challenge the top names in Division One football, Bedford is taking every opportunity to score in the world-series commercial vehicle challenge.

Here's to a winning season!



The summer break is not just a well-deserved rest for our players—it is often a busy time with several functions and promotions to be attended. In particular there are a host of end-of-season football club dinners and presentations.

Our two pictures capture Mitchell Thomas and Mick Harford at Limbury Old Boys and Ray Daniel with the Wigmore Athletic club.



Rain failed to dampen the enthusiasm of 142 Bedfordshire schoolchildren who took part in our soccer coaching clinic last week.

The highlight for the youngsters aged between 8 and 15, was a visit by the first team. After demonstrating some of their skills, Steve Foster and the lads joined in the coaching session and passed on a few tips.

The coaching week, held at Bedford, was organised by Luton Town FC in conjunction with the Bedfordshire Journal newspaper.



Town players Emeka Nwajiobi, Ricky Hill and Mitchell Thomas are pictured with physiotherapist John Sheridan visiting the wards at the RAF Akrotiri hospital in Cyprus during our end-of-season visit in May.

Junior Hatters



Sponsored by:
THE HERALD NEWSPAPER
and CHILTERN RADIO



Welcome back Junior Hatters,
parents and friends

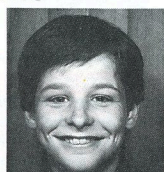
I HOPE you have enjoyed the summer break and have had a good holiday. You will see that I have taken over as new president during the close season from Ricky Hill, who has completed his term of office. He said he enjoyed every minute of it and I am sure I will too. I hope you have all remembered to renew your membership, if not please call in at the Club Offices in Kenilworth Road today. A special welcome too to our guests and friends from the sponsors of today's game—Bedford Trucks. The escorts and mascots are all employees' children. I hope you enjoy the game and look forward to seeing you here again on August 27 when we play Arsenal. By then, I hope we will be able to enjoy having a few points in the bank! Take care and do your best to support the team today.

Peter Nicholas

ESCORTS

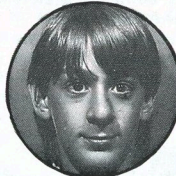


Trevor Bollom



Paul Maunders

MASCOT



Gary
Boyd



Mark Fussell



David Torpey

Bedfordshire
Bottled Gases
bbg

PHONE BEFORE FOUR—
NEXT DAY AT YOUR DOOR

Specialists in Central Heating run by L.P.G. on bulk tanks or cylinders
Main Suppliers for all leading makes of L.P.G. appliances

BREWERS HILL ROAD
DUNSTABLE, BEDS

DUNSTABLE (0582) 600858

(24 HR ANSWERING SERVICE)

UNBEATABLE SERVICE
FOR CYLINDER REFILL DELIVERIES

Today's MATCH SPONSOR

THE NEW MIDI HAS SHOWN
COMPETITORS THE VALUE OF BEDFORD'S
SPECIALISATION.



Often with the launch of a brand-new commercial vehicle buyers initially stay away in droves.

They're hesitant to take on the new against the well-tried.

Not so with Bedford's new Midi 1-tonner. Because not only is the Midi already out-selling the German and Japanese equivalents, but as a new entry is also challenging long-established British makes.

The Luton-built Midi has been as enthusiastically received by motoring journalists as by buyers.

One writer, who drove four Midi vans out of the 16 model range, accurately predicted in the April issue of 'Marketeer':

"A favourite is just what this new van, the Bedford Midi, will become...It is, absolutely, a little cracker. It is a joy to drive..." The authoritative 'Transport News' concurred that the Midi was "...sturdy, stylish and well-designed..."

As registrations of Midis ably demonstrate, Bedford's position as Britain's biggest commercial vehicle specialists means vehicles better specified to the real needs of operators and buyers alike.

While on top of the Midi's launch success has come increased demand for the Bedford TL truck range.

A recent review of 7½-tonners in 'Transport Engineer' summed up our

own intentions with, "The widest choice that is in tune with operational needs is Bedford's."

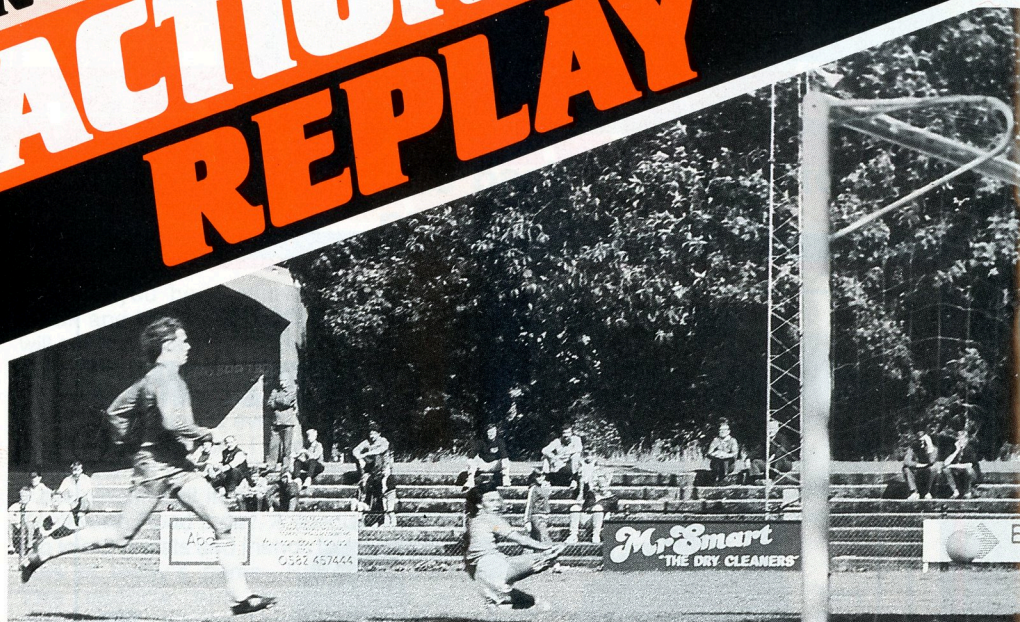
Bedford as part of General Motors Truck & Bus Group, the world's largest specialists, have vast resources to draw upon. Planned are even more upsets for our competitors.

And better vehicles for users.

BEDFORD GM
Now the driving force.

Bedford Commercial Vehicles, Division of General Motors Overseas Commercial Vehicle Corporation, P.O. Box 3, LUTON, LU2 0SY.

Reserves ACTION REPLAY



Pre-season friendlies

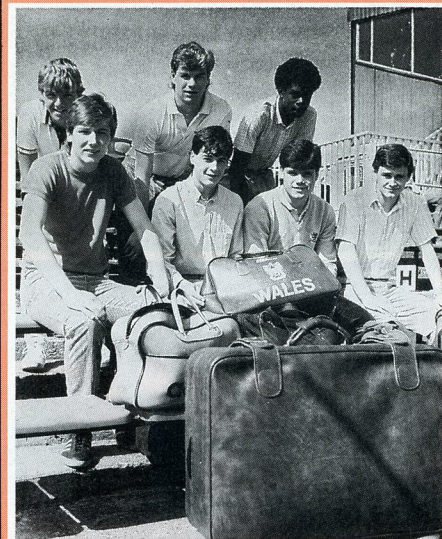
OUR promising young reserves have been enjoying a successful run of results in their pre-season friendlies with one win and two draws in fixtures at St. Albans, Bishops Stortford and Dunstable. Mark Stein and Mark North have been prominent in all three games, scoring five of the six goals between them . . . a certain sign of optimism for the future. Good luck for the season, lads.



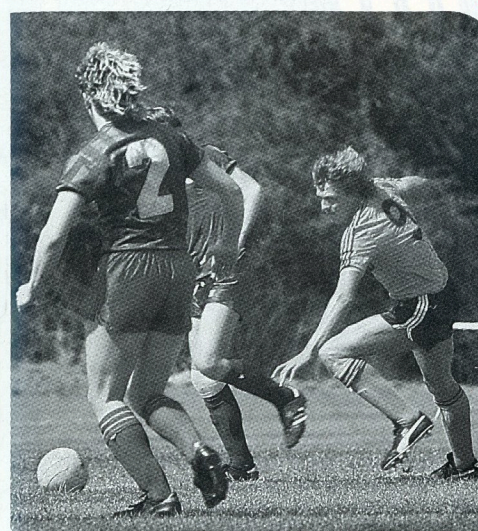
Youth Team

THE morning of July 8th this summer saw the arrival of the Town's largest-ever group of new young apprentices. On hand to welcome them were a few old hands from last year like Gary Cobb (back row left) who is pictured with Sean Farrell and Marvin Johnson in the back row and Ian Scott, John Kennedy, Richard Harvey and Aaron Tighe in the front row, left to right. After last year's runaway success in the South East Counties League, the youngsters have a lot to look up to—but we wish them all the best for a long and happy association with Luton Town.

NEW APPRENTICES



Gary Cobb Sean Farrell Marvin Johnson
Ian Sears John Kennedy Richard Harvey
Aaron Tighe



AT the same time, we are pleased to welcome back John Faulkner, the new youth team coach to Kenilworth Road. John gives his views on how the game has changed in "Views from the Bench" elsewhere in this programme. After a popular spell here at the peak of his career, we are sure everyone will be pleased to see "Maxie" back again.

Introducing

Nottingham Forest



Garry Birtles—Garry returned to Forest in the 1982/83 season, two years after his £1¼ million move to Manchester United. He joined Forest from Long Eaton United and graduated to the England squad. He missed quite a large part of last season following a serious back operation.

Ian Bowyer—Born in Ellesmere Port, Cheshire, Ian, is in his second spell at the City Ground, returning to Forest from Sunderland. Ian was appointed club captain at the beginning of the 1983-84 season.

Ian Butterworth—Aged 21 and born in Crewe, Ian joined Coventry City as an apprentice in June 1980 and signed professional forms a year later. Ian joined the City Ground staff for a big fee at the end of May 1985.

Nigel Clough—Joined Forest as a non-contract player in January 1985 signing full professional forms in July 1985. Made his first team debut against Ipswich last December and scored his first League goal against Watford in May after impressing here in April.

Peter Davenport—Peter signed for Forest on New Years Day 1982 having previously been on Everton's books. He was a prolific goalscorer in our Central League side before making his first team debut against Liverpool at Anfield on 1st May 1982.

Chris Fairclough—Local-born Chris joined Forest straight from school as an apprentice and he is now firmly established as a regular first team member.

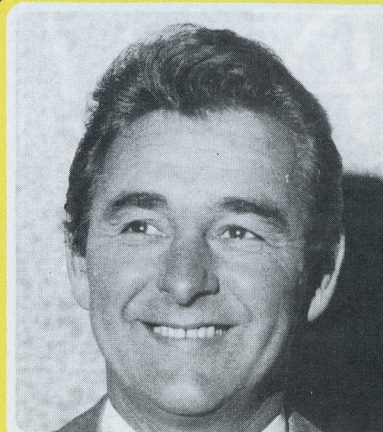
Stephen Hodge—Nottingham-born Steve made his first team debut against Ipswich at Portman Road, in the last game of 1981-82. Since then he has become a regular first team player and an England U21 player.

Jim McNally—Glasgow-born Jim joined Forest from Celtic in May 1984. He made his debut for the first team in our 3-1 win over Norwich on 29th September 1984.

Johnny Metgod—This 6' 4" Dutch international played sweeper for Real Madrid but can also play in midfield. Born in Amsterdam, he progressed through DWS, Haarlem and AZ 67



Back row, left to right: Gary Megson (now Brighton), Gary Mills, Mark Smalley, Chris Fairclough, Kenny Swain (now Portsmouth), Franz Carr, Steve Murray.
Middle row: Ron Fenton (Coach), Trevor Christie (now Derby Co), Johnny Metgod, Darran Heyes, Steve Sutton, Ronnie Sinclair, Paul Hart (now Sheffield Wed), Brian Clough (Manager).
Front row: Peter Davenport, Jim McNally, Steve Hodge, Ian Bowyer (Captain), Steve Wigley, Bryn Gunn, Colin Webb.



Nottingham Forest manager Brian Clough has been one of the most talked-about figures in the game for several years. He holds strong views and often expresses them, but it is for his success as a manager that he has earned most of the headlines. His playing career was a highly-promising one ended by injury after he had become one of the most prolific scorers in England. As a manager he has had successes with Hartlepoons, Derby County and Nottingham Forest as well as interesting spells at Brighton and Leeds United. He has won the League Championship with both Derby and Forest and twice led the Nottingham team to the European Champions' Cup.

before signing for Real Madrid in 1982. Signed for Forest in July 1984.

Stuart Pearce—Stuart is 23 and was born in Shepherds Bush, London. He joined Coventry in October 1983. He joined Forest along with Ian Butterworth at the end of May 1985 in a joint £400,00 deal.

Hans Segers—24-year-old Hans was born in Eindhoven, Holland. He joined Forest from P.S.V. Eindhoven on a year's loan and made his first team debut in November 1984 at Highfield Road against Coventry City. He made such an impression that the Manager signed him on a permanent contract in March.

Des Walker—Born in Enfield, Middlesex. Des joined Forest as an apprentice in July 1982. He played for the first team at the end of last season and was selected for the England U21 team against Finland in May 1985.

Steve Wigley—Steve signed for Forest in April 1981 from Curzon Ashton and made his first team debut against Arsenal in October 1982.

Neil Webb—This 21-year-old former England youth international was signed from Portsmouth for £250,000 at the end of May having made 46 appearances for them last season.

B. DOHERTY SKIPHIRE

34 MOUNT PLEASANT ROAD
LUTON

Telephone: 574633 & 574799

T. J. ALDRIDGE



Builders
• ROOFING SPECIALISTS • PLUMBING
• GENERAL BUILDING • PAINTING & DECORATING
• REPAIRS • CARPENTRY
• BRICKWORK • ELECTRICAL

302 Selbourne Road, Luton, Beds LU4 8NU

Telephone: 505412-505413



GOOD LUCK
LUTON

Media Men

Media Men—official PR Consultants to Luton Town Football Club are proud to be associated with a winning team.

7 Albert Terrace, Union street
Bedford MK40 2SF Tel: 0234 213195

SHOREY'S TRAVEL

LUXURY
COACH HIRE
FOR FOREIGN &
UK EXECUTIVE
COACHES



COMPETITIVE RATES • FRIENDLY SERVICE • LOCAL BASED

28 Sheepfold Hill, Flitwick, Bedfordshire
Telephone: Flitwick 713289 Silsoe 60694

MARTIN SMITH MOTORS

Used Commercial Vehicle Sales

REPAIRS • SERVICING
MOT TESTING

199 Leagrave Road
Leagrave, Luton

Telephone: Luton 574455 or 572806

**DID YOU
KNOW THAT
LUTON
PRODUCED**



BRITAIN'S LEADING POWER TOOL SPECIALISTS?

For a fully comprehensive stock of tools and accessories, expert advice, service and repairs, no one can beat Tek Power Tools for quality, professional attention and value for money.

**Why not take advantage of the fact that
your local power tool specialists are also
Britain's best?**

Tek Power Tools Ltd, Collingdon St, Luton.
Tel no. 417123 Telex. 825115

**DAVID
EVANS**
chairman



Club Comment

Welcome to the
new season which we are all
looking forward to
with eager anticipation

DURING the summer, as you can see, the En-Tout-Cas synthetic grass pitch has been laid and has been sponsored by Bedford Trucks. I am sure you would wish me on your behalf to thank them for being the main sponsor of the Club.

The new surface is, if you like, an indication of the management's determination to make a real family environment and we have further indicated this by not selling any seats in the ground other than as season tickets.

Another reason for this is that the board are intending to have home supporters only next season (1986-87) and, in so doing, will cover the Kenilworth Road end for the Oak Roaders, converting the Oak Road end into an all-seated area to accommodate the Bobbers and to allow for further family areas, enabling us to introduce approximately 30 boxes in the current Bobbers Stand, subject to planning consent.

This year the supporters at the Oak Road will have noticed—I hope—that the toilets have been renovated, at considerable expense, for their benefit and that the walkways have been lowered to enable better viewing. I hope this determination to improve the facilities for our fans will be appreciated. Obviously when changes are made some supporters may be inconvenienced.

Survival

If we are to survive at Kenilworth Road it is important every possible method of increasing our income is explored and some decisions already made will hopefully do just that. However, it is you, the fan, who can make life so much easier by bringing along a friend. This, in itself, would make the future of our club much more certain.

I would like to take this opportunity of thanking all our sponsors for their continued support and I wish you all a happy and successful season and, on your behalf, I wish David Pleat and the team the luck and success they deserve.

**TOP
SCORE**



6 from 49

**EARN AROUND
£15 A WEEK IN YOUR
SPARE TIME!**

**Become a Collector for
the new weekly Pool!**

Spend one evening each week arranging for the collection and distribution of coupons in your area.

TOP SCORE is the new exciting Football Pool, supported by National Advertising and run by Football Clubs. Luton Football Club is your local main Agent.

TOP SCORE is fun and easy to enter. Tens of thousands of £££'s in prizes to be won every week by entrants who simply pick the six top SCORING teams.

Applicants should telephone John Dollimore on Luton 411622.

*To receive your coupon
regularly telephone
JOHN DOLLIMORE ON
LUTON 411622*

TOP SCORE  **6 from 49**

Welcome back to the Canon League.



This is the third season of the Canon League — Canon's sponsorship of the Football League Championship.

Canon's outstanding success in the high technology industries of cameras and business equipment has enabled them to support our national game with over £3 million.

The sponsorship money is shared between all 92 League clubs and is used to help keep admission prices down, encourage exciting attacking football with goalscoring awards and to provide recognition and financial

Canon (UK) Ltd., Canon House, Manor Road, Wallington, Surrey SM6 0AJ.

support to those clubs who do most to promote family attendances at Canon League matches.

In the 1984/85 Canon League season, the beautiful trophies pictured above — specially created by Garrard, the Crown Jewellers — were won by Everton, Oxford United, Bradford City and Chesterfield. This season, all 92 clubs will again compete for these most prestigious trophies in the toughest football competition in the world — the Canon League.



Official Camera
& Business Machines
of The Football League

VIEWS from the MEDIA

By Robert Alexander

THIS afternoon sees the first match at Kenilworth Road on an artificial surface thanks to Bedford Trucks' sponsorship of the En-tout-cas surface in front of us all today. It is said to be quite a change from that installed some years ago at Queens Park Rangers ground at Loftus Road. We, in the media, will delay our judgement until we have seen the quality of the football it produces—but noting is more certain than that our national game needs to see as many progressive moves made this season as possible.

Luton have had a tremendous record and remain the only unbeaten team to have put together a perfect 100% record on the inaugural surface at Loftus Road, so the players are bound to approach their matches here on the new pitch with plenty of confidence.

The pitch has been laid down during the summer thanks to the £350,000 sponsorship of Bedford Trucks and judging from the way it felt when I walked on it earlier this week it should provide a true bounce and a much greater "feel" for the ball players who love to caress it before moving it on. Several jour-

nalists who kicked around on it said they enjoyed it.

On the same day the pitch was officially launched through a press conference here, Luton's Executive Director John Smith told me about many other ways in which the club is seeking to close the gap between its income and its outgoings. One of them is the formation of a Centenary Club, principally aimed at out-of-town members or fans who cannot attend all the home matches.

It is a simple enough idea taken from county cricket, but one that it is somewhat amazing no-one else has ever tried before. For £25, members will obtain regular newsletters, special medals, all the match programmes and generous discounts on the club history due to be published at the end of the month.

That sounds like a good offer to me and I hope it is as successful as the pitch in making Luton the sort of safe and happy club it has always been. Progressive and imaginative thinking is the hallmark of the club's work in the last few years and it is thanks to such efforts that the Hatters remain one of the friendliest and most popular clubs—with the media—in the First Division.

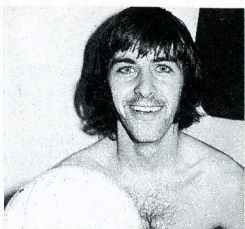
Anglia Television

Proud to serve
the
East of England.



BARRY BUTLIN

pictured with the match ball after a hat-trick on the promotion trail in 1973-74, is one of several players to have played for both Luton and Forest, including Horace Gager, Stuart Imlach and David Pleat.



ONE of the greatest milestones in the history of Luton Town Football Club was reached on April 11th, 1985, when we celebrated our 100th birthday, two days before that stirring FA Cup semi-final against Everton at Villa Park.

This season we are celebrating our Centenary with a series of events including the publication of the official history of the club, the launch of a Centenary Club and this series of special features which will spotlight great moments in our past. The official history, *The Luton Town Story*, is published by the club and on sale, price £12, at the club offices and bookshops throughout the area.

It contains a fully-documented and illustrated history of the club, full reports of all the great games, detailed sketches of the most prominent players, managers, directors and staff and is accompanied by a fully researched statistical section. The book, like this series of features, will revive old memories and bring long forgotten favourites vividly back to life—Bob Hawkes, Joe Payne, Hugh Billington, Gordon Turner, Bob Morton and many more.

Order your copy now to avoid disappointment—it's a book every supporter will be proud to read.

continued on next page



Billy Bingham — Syd Owen

BILLY BINGHAM and SYD OWEN

share a joke in 1959, the year of the Luton—Forest Cup Final, when Owen, then our centre-half and captain, won the Footballer of the Year award. Owen, now retired from the game after a long and distinguished career, was an England international while Bingham, now manager of Northern Ireland, was one of the most electric right wingers in the First Division.

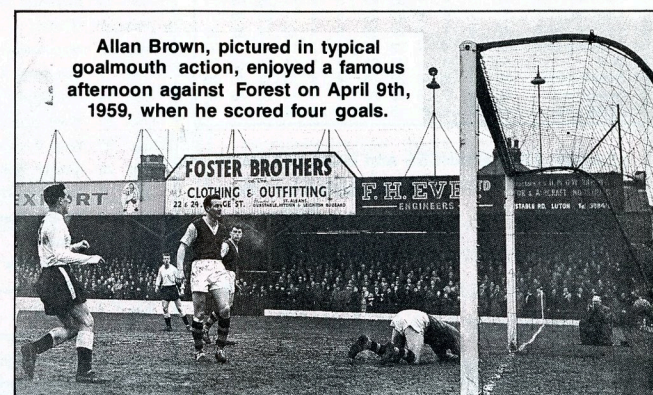
Yesterdays

the most electric right-winger in the First Division, put us 3—0 ahead three minutes before half-time and it was all over bar the shouting.

Brown completed his hat-trick shortly after half-time and added his fourth in the 80th minute, John Quigley notching a consolation goal for Forest one minute from time.

The following day's papers were full of theories about the Town players growing over-confident because of the win. They also wrote about the effect such a

Allan Brown, pictured in typical goalmouth action, enjoyed a famous afternoon against Forest on April 9th, 1959, when he scored four goals.



A summary of our League matches against Nottingham Forest.

	(Luton score first)	
	Home	Away
1937-38	2-2	0-1
1938-39	1-0	4-2
1946-47	3-2	2-4
1947-48	2-1	2-1
1948-49	4-3	0-2
1951-52	3-3	0-2
1952-53	3-0	3-4
1953-54	0-1	1-2
1954-55	3-0	5-1
1957-58	3-1	0-1
1958-59	5-1	1-3
1959-60	1-0	0-2
1972-73	1-0	1-0
1973-74	2-2	0-4
1975-76	1-1	0-0
1976-77	1-1	2-1
1982-83	0-2	1-0
1983-84	2-3	0-1
1984-85	1-2	1-3

	P	W	D	L	F	A
Home	19	10	5	4	38	25
Away	19	6	1	12	23	34
Total	38	16	6	16	61	59

defeat might have on the Forest players. But it was all kidology.

Syd Owen, the Town centre-half and captain, said: "We went out determined to win and as a result we played as we have been playing in the Cup-ties."

Bob Morton said: "I think we can beat the Forest at Wembley especially if they rely on the offside trap."

Only Billy Walker, the Forest manager, offered an alternative point of view. He said: "I do not think it will be the same on Cup Final day."

TEAMS:
Luton: Baynham, McNally, Hawkes, Groves, Owen, Pacey, Bingham, Brown, Morton, Cummins, Gregory.

Nottingham Forest: Fraser, Whare, Thomas, Whitefoot, McKinlay, Palmer, Gray, Quigley,

Barratt, Wilson, Imlach. How right Walker was that day!

But if Forest have had the upper hand in Cup encounters, there is nothing to choose between us in League matches.

Indeed, since the war we have a very evenly-matched record against Nottingham Forest. In that period we have met quite regularly with both clubs having a natural edge on home victories.

The first League match between the two sides took place at the City Ground on Good Friday, April 15th, 1983, towards the end of our debut season in the Second Division.

The result was a 1—0 victory for Forest which set up the return at Kenilworth Road on Easter Monday when 13,561 fans saw a 2—2 draw in which Ted Vinnall and Jock Finlayson were our scorers.

1st Team 1985-86 SEASON UPDATE

Canon League Division One

Final League table 1984-85

	P	W	D	L	F	A	W	D	L	F	A	Pts
1 Everton	42	16	3	2	58	17	12	3	6	30	26	90
2 Liverpool	42	12	4	5	36	19	10	7	4	32	16	77
3 Tottenham	42	11	3	7	46	31	12	5	4	32	20	77
4 Manchester U.	42	13	6	2	47	13	9	4	8	30	34	76
5 Southampton	42	13	4	4	29	18	6	7	8	27	29	68
6 Chelsea	42	13	3	5	38	20	5	9	7	25	28	66
7 Arsenal	42	14	5	2	37	14	5	4	12	24	35	66
8 Sheffield Wed.	42	12	7	2	39	21	5	7	9	19	24	65
9 Nottingham F.	42	13	4	4	35	18	6	3	12	21	30	64
10 Aston Villa	42	10	7	4	34	20	5	4	12	26	40	56
11 Watford	42	10	5	6	48	30	4	8	9	33	41	55
12 West Brom	42	11	4	6	36	23	5	3	13	22	39	55
13 Luton	42	12	5	4	40	23	3	4	14	17	39	54
14 Newcastle U.	42	11	4	6	33	26	2	9	10	22	44	52
15 Leicester City	42	10	4	7	39	25	5	2	14	26	48	51
16 West Ham	42	7	8	6	27	23	6	4	11	24	45	51
17 Ipswich Town	42	8	7	6	27	20	5	4	12	19	37	50
18 Coventry City	42	11	3	7	29	22	4	2	15	18	42	50
19 QPR	42	11	6	4	41	30	2	5	14	12	42	50
20 Norwich City	42	9	6	6	28	24	4	4	13	18	40	49
21 Sunderland	42	7	6	8	20	26	3	4	14	20	36	40
22 Stoke City	42	3	3	15	18	41	0	5	16	6	50	17

LEAGUE APPEARANCES and GOALSCORERS

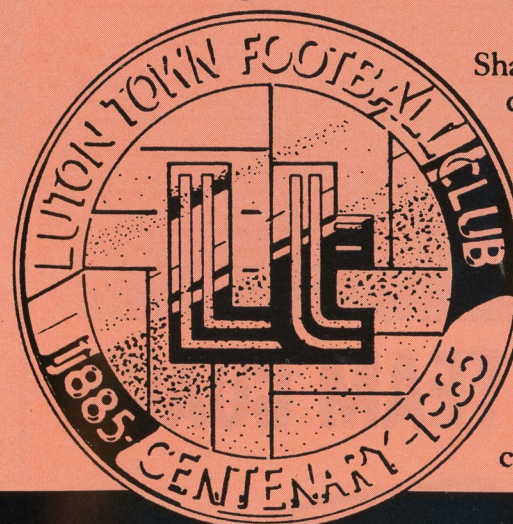
	Appearances	Goals
T. Breacker	34(2)	
F. Bunn	17(3)	5
R. Daniel	4(6)	1
A. Dibble	13	
M. Donaghy	42	1
M. Droy	2	
P. Elliott	9	1
S. Elliott	12	3
J. Findlay	3	
S. Foster	25	1
A. Grimes	9	
M. Harford	22	15
V. Hilaire	5(2)	
R. Hill	39	2
D. Moss	17(3)	7
P. Nicholas	19	
S. North	7	
E. Nwajobi	22(9)	9
G. Parker	13(10)	1
D. Preece	21	2
L. Sealey	26	
B. Stein	42	9
M. Stein	(2)	
M. Thomas	35(1)	
C. Todd	2	
W. Turner	22(4)	

Luton Town

	FA	Att	Pos	1	2	3	4	5	6	7	8	9	10	11	12
Aug 17 Nottingham Forest															
Aug 21 Newcastle United															
Aug 24 West Ham United															
Aug 27 Arsenal															
Aug 31 Aston Villa															
Sept 7 Chelsea															
Sept 14 Everton															
Sept 21 Queens Park Rangers															
Sept 28 Sheffield Wednesday															
Oct 1 Ipswich Town															
Oct 5 Manchester United															
Oct 12 Oxford United															
Oct 19 Southampton															
Oct 26 Liverpool															
Nov 2 Birmingham City															
Nov 9 Tottenham Hotspur															
Nov 16 Coventry City															
Nov 23 Watford															
Nov 30 Manchester City															
Dec 7 Newcastle United															
Dec 14 Nottingham Forest															
Dec 21 West Ham United															
Dec 26 West Bromwich Albion															
Dec 28 Ipswich Town															
Jan 1 Leicester City															
Jan 4 FA Cup Round 3															
Jan 11 Chelsea															
Jan 18 Aston Villa															
Jan 25 FA Cup Round 4															
Feb 1 Arsenal															
Feb 8 Southampton															
Feb 15 Liverpool (FAC5)															
Feb 22 Queens Park Rangers															
Mar 1 Sheffield Wednesday															
Mar 8 Manchester United (FAC6)															
Mar 15 Oxford United															
Mar 22 Everton															
Mar 29 Leicester City															
April 1 West Bromwich Albion															
April 5 Birmingham City (FAC s/f)															
April 12 Tottenham Hotspur															
April 19 Coventry City															
April 26 Watford															
May 3 Manchester City															

©Copyright of The Canon League

Join the Luton Town F.C. Centenary Club.



Share in our 100th anniversary celebrations by joining the Luton Town F.C. Centenary Club and get this superb limited edition Centenary Medal free. You will also receive every home match programme, two tickets for any home league match (subject to availability), an exclusive inside-track newsletter, priority availability for International and cup match tickets and much more...

Ring David Pleat on Luton (0582) 594466 for all the details!

THERE IS NO SUBSTITUTE.
adidas
THE WORLD'S LARGEST SPORTSWEAR MANUFACTURER



Photos by
Gareth Owen

Editor:
Robert Alexander



Vauxhall Teamcheck

Luton Town

- 1 Andy Dibble
- 2 Tim Breacker
- 3 Mitchell Thomas
- 4 Peter Nicholas
- 5 Steve Foster
- 6 Mal Donaghy
- 7 Ricky Hill
- 8 Brian Stein
- 9 Mick Harford
- 10 Emeka Nwajobi
- 11 David Preece

Sub

Nottingham Forest

- 1 Hans Segers
- 2 Jim McNally
- 3 Stuart Pearce
- 4 Des Walker
- 5 Ian Butterworth
- 6 Ian Bowyer
- 7 Stephen Wigley
- 8 Stephen Hodge
- 9 Garry Birtles
- 10 Peter Davenport
- 11 Neil Webb

Sub

Referee: J. MARTIN Linesmen: M. C. BAILEY (Red Flag) P. CROSSLEY (Yellow Flag)

THE ROVERS' TEAM COACH.



THE NEW VAUXHALL ASTRA ESTATE.

Remember, we got here first.

