

Welcome to

# Luton Town



CANON LEAGUE  
DIVISION ONE  
LUTON TOWN  
v  
MANCHESTER  
UNITED  
SUNDAY 12th  
FEBRUARY 1984

TODAY'S MATCH IS SPONSORED BY

## Wallspan Bedrooms



'GOING FORWARD TOGETHER'

## LUTON TOWN FC

*The progressive and innovative team  
of the  
Canon League Division One*

## HERTFORDSHIRE BTR LIMITED

*The progressive and innovative team  
of the  
Automotive Component Industry*

 **HERTFORDSHIRE  
BTR LIMITED**  
Subsidiary of BTR plc

Works Road  
Letchworth  
Hertfordshire SG6 1LW  
Tel: 046-26-2355  
Telex: 82204

*Manufacturers of Natwal and  
Synthetic Rubber Components for Industry*

## Luton Town FC.

**LUTON TOWN FC**  
70-72 Kenilworth Road  
Luton  
Tel: 411622

Chairman: Denis Mortimer

Directors:

R. L. Banks, D. J. Evans, E. S. Pearson  
R. J. Smith, J. R. Smith (Executive)  
D. J. Pleat (Team Manager)

President: T. Hodgson

Vice Presidents:

J. A. C. Bain (Deputy President)  
Sir Reginald Pearson OBE,  
A. G. Berry, J. B. Brent, C. Bygrave,  
B. Cole, B. England, N. S. Fookes,  
C. Holloway, I. E. Holmes,  
C. J. Evans, R. Larkinson,  
L. Leppington, Eric Morcambe OBE,  
R. Safranek, E. Waller, R. Unwin

Administration:

General Secretary: Graham MacKrell

Club Secretary: John Wilkinson

Commercial Manager:  
Bill Tomlins

Projects and Advertising Executive:  
Mike Beevor

Catering Manager: Clive Hustwitt

Development Executive:  
John Gornall

Auditors:  
Arthur Young, McClelland,  
Moore & Co.

Photographer: Gareth Owen

Playing:

Coaches:

David Coates, John Moore and  
Trevor Hartley

Physiotherapist: John Sheridan

Doctor: W. A. C. Berry MBBS

All ticket enquiries please contact  
Luton 30748. All matchday information  
is obtainable from our 24-hour  
answering service — Telephone Luton  
33010

Printed by:  
Hemmings & Capey (Leicester) Ltd

# Team Check

## LUTON TOWN



- 1 LES SEALEY
- 2 KIRK STEPHENS
- 3 MITCHELL THOMAS
- 4 BRIAN HORTON
- 5 PAUL ELLIOTT
- 6 MAL DONAGHY
- 7 RICKY HILL
- 8 BRIAN STEIN
- 9 PAUL WALSH
- 10 TREVOR AYLOTT
- 11 FRANK BUNN
- 12 *ANTIC*

## MANCHESTER UTD



- 1 GARY BAILEY
- 2 MIKE DUXBURY
- 3 REMI MOSES *ALISTON*
- 4 RAY WILKINS
- 5 KEVIN MORAN
- 6 GRAEME HOGG
- 7 BRYAN ROBSON
- 8 ARNOLD MUHREN
- 9 FRANK STAPLETON
- 10 NORMAN WHITESIDE
- 11 ~~ARTHUR GRAHAM~~ *MOSES*
- 12 *GRAHAM*

Referee: ALAN ROBINSON (Hants) Linesmen: R. L. BIGGER (Red Flag) P. K. HELSBY (Yellow Flag)

Today's Match is sponsored by:

**Wallspan  
Bedrooms**

Today's Match Ball  
is sponsored by:  
**CLARENDON HATS**



**BEDFORD BUSINESS MEANS:**

**You need it,  
we've  
got it.**



**A vehicle for every business.**

You'll find Bedfords working in just about every business you can think of. That's because we offer a vast range of vehicles from light vans to heavy-duty trucks to keep the wheels of British industry turning. And, if you came to the match by coach, the chances are that also was a Bedford.

**A dealer round every corner.**

You'll find a Bedford dealer is never far away. He'll help you choose the vehicles that best suit your business needs; he'll advise you on our special leasing, insurance and warranty schemes; and he'll maintain your Bedfords in peak condition throughout their long working life.

Because, giving our customers what they need, when they need it, is what Bedford business means.



**BEDFORD  
MEANS  
BUSINESS**



# MY VIEW

Today is an important occasion for everyone connected with the club. It is my hope that we have a well behaved crowd to support 22 players who will strive their best to entertain the arm-chair millions.

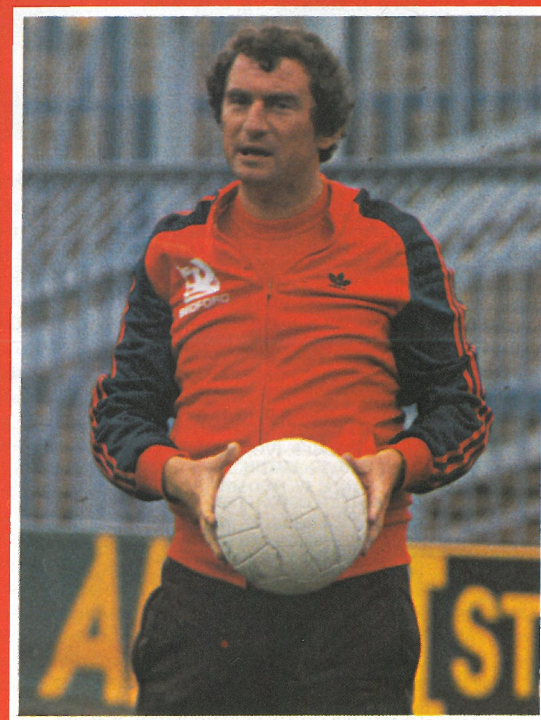
If we can gain the three points I will be more than delighted. There is still an indefinable barrier that has prevented us, since our return to the First Division, gaining victories against any of the big four, Liverpool, Manchester United, Arsenal and Tottenham.

We have the ability. To win seven times on opposition territory this season proves we have character too. Now we must believe in ourselves, to reach the top-half of the First Division has been a solid effort. It could even be argued that had unlucky home defeats against West Ham, Forest and Arsenal been reversed, we could have been sitting pretty alongside our famous opponents. But luck evens itself out.

When we played at Old Trafford we never got into our stride and two penalty decisions swung the game deservedly towards United. Now they are out of the domestic Cups they will be determined to challenge Liverpool for the title. Ron Atkinson has the added pressure of trying to convince his star players that their future is in Manchester rather than Italy or Spain. We wish him well but today we hope that we can produce the form which will give United's ambitions a temporary setback.

Recently you may have read that the Secretary/Managers Association met the Referees Association and the Football League in London. Many sound points were raised in this preliminary meeting and a further discussion is planned. I think it is fair to say that the managers, players, crowds and referees have to form by regular contact, a better understanding with each other. This relationship is created in many ways — for example, in the Southampton evening sports paper, today's referee Mr Alan Robinson contributes a regular feature. This way, the public can learn to appreciate the game from the referee's angle.

Our players have enjoyed a few days in Spain since our last League match at Wolverhampton. The week should have done them good, the season is very demanding. Between 26th December and 21st January, our players were involved in eight games.



It is not only demanding for the players but it can be expensive for the regular football watcher. Apart from the massive implications of over exposure on television, we have in football an incorrect theory that the more games you play, the more revenue you produce.

What about the game and the quality? We need a new breed of players from the terraces and they need to initiate and copy live quality from bright sharp players, not players produced to 'battle' through 60 games.

Thanks for coming — enjoy the game.



# MEMBERS OF THE KENILWORTH SUITE

MR D. SAVAGE  
BEDFORD COMMERCIAL VEHICLES, LUTON  
MR A. G. BERRY FCCA, CHAIRMAN  
BLUE ARROW GROUP SERVICES LTD  
5 LONDON ROAD, ST ALBANS, HERTS  
BRENGREEN HOLDINGS PLC  
61 CHEAPSIDE, LONDON EC2V 6AX  
GARY CHAMBERLAIN  
GARY CHAMBERLAIN WINDOW FASHIONS, UNIT 7,  
BEAUMONT WORKS, SUTTON ROAD, ST. ALBANS, HERTS.  
TEL: ST. ALBANS 62577  
MR P. COOPER  
CLEANDUSTRIAL SERVICES LTD, PALMERS GREEN, LONDON N13  
TEL: 01-882 4626  
FILMERGRAPHIC ASSOCIATES LTD  
PRINTERS AND PHOTOTYPESETTERS  
BAINSON HOUSE, ALTON ROAD, LUTON, BEDS.  
TEL: LUTON 36407  
FINE STAMPS LTD  
BILTON WAY, LUTON, BEDS. TEL: LUTON 36761  
MR N. S. FOOKES  
N. S. FOOKES GROUP, (PLANT FACILITIES) LTD  
PROGRESS HOUSE, PROGRESS WAY, LUTON BEDS.  
MR E. FOUNTAIN  
VAUXHALL MOTORS, LUTON  
BRIAN E. HANDSCOMBE (LIFE & PENSIONS BROKER)  
48 ALMA STREET, LUTON. TEL: LUTON 425921/4  
MR I. E. HOLMES, IVOR HOLMES LTD  
82-88 MARSH ROAD, LUTON, TEL: LUTON 56622  
MR C. J. HUDSON, E. W. HUDSON (HOLDINGS) LTD  
6 UNION STREET, LUTON, TEL: LUTON 36881  
RICHARD C. LARKINSON, (BALDOCK) LTD  
TWENTY PENCE ROAD, COTTENHAM, CAMBS.  
MARK JAMES (SALVAGE) LTD  
GRANGE HOUSE, 10 COMPTON AVENUE, LUTON BEDS.  
TEL: LUTON 503777  
MARSHALLS OF LUTON GROUP, MARSHALL CHAMBERS  
MILL STREET, LUTON LU1 2NN. TEL: 429933  
IAN C. CHEVERALLS  
OPALVALE GROUP  
189 WALLER AVENUE, LUTON, BEDS. TEL: LUTON 56122  
MR & MRS S. J. PEARSON  
55 LUTON ROAD, WILSTEAD, BEDFORDSHIRE JK45 3ET  
DR & MRS G. L. PLESTER  
9 BRIARS CLOSE, NUNEATON, WARWICKSHIRE  
NIGEL TERRY, PRIORY FARM FOODS  
81-83 PETERS STREET, BEDFORD, TEL: 0234 60372  
MR A. HUNTER  
RAVENMERE LTD. ALLRIC HOUSE, 21 FARLEY HILL, LUTON  
TEL: LUTON 32640  
RICHARDSON & BOTTOMS LTD  
105-107 BISCOT ROAD, LUTON, BEDS. TEL: LUTON 35421/5  
RICHMOND ELECTRONICS  
(MARKYATE) LTD  
HICKS ROAD, MARKYATE, HERTS. TEL: LUTON 840761  
ROBINSON METAL (LUTON) LTD  
CALEB CLOSE, 464 DUNSTABLE ROAD, LUTON, BEDS.  
TEL: LUTON 53866  
MR R. S. SAFRANEK  
NEAHURST LTD  
LONDON ROAD, LOWER STONDON, HITCHIN  
TEL: HITCHIN 94-813545  
MR. W. POWERS  
SHAW & KILBURN OF LUTON  
540-550 DUNSTABLE ROAD, LUTON, BEDS  
WEBBEX LTD  
THISTLE ROAD, WINDMILL ROAD TRADING ESTATE, LUTON, BEDS.  
TEL: 457222  
MR R. W. UNWIN  
R. W. UNWIN & CO. LTD  
PROSPECT PLACE, WELWYN HERTS. TEL: WELWYN 6441  
WALLSPAN BEDROOMS  
INDUSTRIAL ESTATE, MAULDEN ROAD, FLITWICK, BEDS.  
TEL: FLITWICK 713621  
MR & MRS P. LAYCOCK  
11 THE AVENUE, FLITWICK, BEDS.

# Scene on One.. Scene on One.. Scene on One

## SOUTHAMPTON ARE CUP FAVOURITES

By Tony Pullein

The disappearance of such popular sides as Manchester United and Liverpool has thrown the FA Cup competition wide open this season and, when they made the draw for the fifth round, the bookmakers came out strongly for Southampton as the favourites to win it.

Manager Lawrie McMenemy had been quietly fancying his chances all season, recognising that the League Championship is probably beyond them at the moment. After winning 2-1 away to Nottingham Forest in the third round, the Saints' boss felt even more confident.

An injury time winner from Steve Moran gave them victory at Portsmouth but now they have to travel again to meet Blackburn Rovers. This is the fifth successive time that the Saints have been drawn away.

'The last time we were at home was against Everton in 1981,' sighed McMenemy. 'I feel very sorry for our supporters who now have to make another long journey to Blackburn.'

The draw hasn't been kind to Southampton in the Milk Cup either. Apart from the two-legged games in the second round, the Saints haven't been drawn at home since they appeared in the final in 1979!

The Blackburn-Southampton tie will be televised live on the Friday evening.

### DISPLAYED PROUDLY

For the moment the FA Cup remains proudly on display at Old Trafford but it will shortly have to be packed up and transported back to FA headquarters in London. Where it will end next May is anyone's guess.

● Some critics are making an inspired forecast that it could be Watford! The Hornets are never mentioned as possible winners but they have run into form at precisely the right time and, now that their relegation fears are beginning to recede, they could be ready to pounce.

Watford are at home to Brighton in round five. They knocked us out in a replay in the third round, of course, and then won 2-0 at Charlton — not the easiest of places for visiting teams these days.

● Brighton, having recorded that sensational 2-0 win over Liverpool in the last round, naturally savour thoughts of returning to Wembley for the second year in succession. Their victory over Liverpool was very well planned and executed but it will remain to be seen if they can raise their game to the same extent against a less glamorous side as Watford.

Liverpool accepted defeat by Brighton with anticipated good grace. It was a bitter disappointment to a club which has won just about everything else over the past ten years, apart from the FA Cup. Their last success was in 1974.

But manager Joe Fagan was able to say: 'Good luck to Brighton. They deserved their victory. I hope they now go all the way to Wembley and win it.'

### VERY CONCERNED

Liverpool may be out of the tournament but they are still

very much concerned with one aspect of it. 'We are worried about the effects of televising ties live on a Friday evening,' said chief executive Peter Robinson.

'We were against Friday night coverage from the start but the television companies wanted it and we had to stand down. But I hope the deal can be re-negotiated at the end of this season, rather than at the end of the present agreement in two years time.'

● Everton, the club which eventually ended Oxford United's Milk Cup dream, came right down to earth again when they met Third Division Gillingham in the FA Cup at Goodison Park.

Everton had been lucky to avoid Milk Cup defeat at Oxford, where they trailed with only 11 minutes to go. A mistake by the home side gave them a gift equaliser and then they turned it on at Goodison Park to win 4-1.

Once they had the game in control, Everton found the confidence to play the ball around a bit and manager Howard Kendall felt it might be the turning point of their season. 'They showed what they could do when the pressure was off,' he said.

Everton had scored only seven times in 12 home First Division matches so this four-goal hit was a treat for their fans. But then they were held to a 0-0 draw by Gillingham and depression began to come back again.

### REAL CHANCE

One encouragement for Everton was the draw for the semi-finals of the Milk Cup. If they can beat Aston Villa over two legs, then there is a very real chance that they will face neighbouring Liverpool at Wembley!

● Liverpool have to play at home and away to Third Division Walsall, the club which put Arsenal out. But, even allowing for the greatest upset of all time, it is difficult to see how Walsall will hold Liverpool over two games.

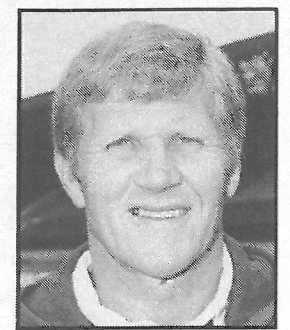
One body a little concerned at the prospect of a Liverpool-Everton final is British Rail. When I spoke to their London office, an official told me: 'That would be a real nightmare. We would have to transport almost 80,000 people from Liverpool to London and back in one day.'

If Everton get to Wembley then former Luton player Andy King will probably not be in the side. He recently lost his place and felt so upset about it that he asked for a transfer. The Everton board agreed to put him on the list last week.

● West Ham United have had more of their share of pro-



JOHN LYALL



BOBBY FERGUSON

blems just when they could have done without them. England centre-back Alwyn Martin and striker Steve Whitton were injured in a car crash and Martin is sure to be out of the side for several weeks.

Manager John Lyall has had to re-arrange his side at a point where he had been hoping for continuity. There was still a chance that the Hammers could win the League Championship when the mishap occurred but they haven't looked quite so composed lately, even though David Swindlehurst continues to score with such regularity. His late equaliser, against his old club Crystal Palace in the FA Cup, was his 14th goal of the season.

Even if the Hammers title hopes have been ended, they still have a fine chance of achieving their highest position in the First Division. Their previous best was sixth in 1927, 1959 and 1973.

● Ipswich were knocked out of the FA Cup by Second Division Shrewsbury Town for the second time in three years but chairman Patrick Cobbold confirmed there will be no panic action from Portman Road. 'When it's the time to panic, that's exactly the time you shouldn't panic,' he pointed out.

'Some years ago Bobby Robson had a couple of sticky years after he took over and we stood by him just as we intend to stand by Bobby Ferguson now.'

Ipswich did not have any cash available for new signings though the situation looked likely to change if England forward Paul Mariner was sold. He had been expected to move to Arsenal but the Dutch club PSV Eindhoven have also been displaying an interest.



## UNRIVALLED FOOTBALL COVERAGE

EXCLUSIVE  
COLUMN  
by  
DAVID  
PLEAT

HATTERS  
REPORTS  
by  
BRIAN  
SWAIN

LOCAL  
LEAGUES  
by  
ERIC  
NORRIS

LUTON TOWN PICTURES BY MARK RICHARDS

IN THE **LUTON NEWS** THURSDAY 12p



# Town Focus



Raddy Antic has the distinction of carving himself probably the biggest piece of history Luton Town FC has ever known. Who will forget that historic scene at Maine Road in the final game of last season when we needed to beat Manchester City to stay in the First Division? There were only four minutes left when it seemed City would salvage the draw which would make them safe and push us into the Second Division.

It was at that point when substitute Raddy struck the goal which sent manager David Pleat racing onto the pitch in absolute delight. There are still several hundred videos which still bear testimony to that glorious goal as Luton supporters refuse to erase the memory of one of the most famous goals in the club's long history. A Yugoslavian international, Raddy will always be remembered by Hatters fans for that effort. He won't forget it himself either – and we certainly don't blame him.

## FOOTBALL LEAGUE

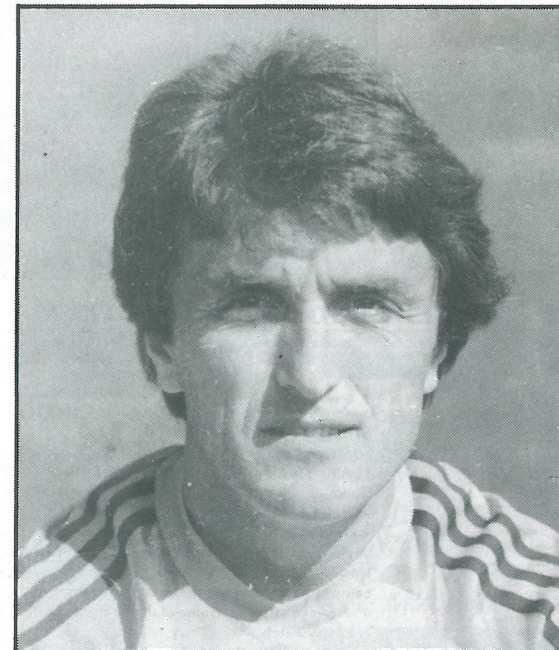
	80-81	81-82	82-83	83-84	Total
Arsenal			s		0 + 1s
Aston Villa			2	s	2 + 1s
Barnsley		ss			0 + 2s
Birmingham			1	s	1 + 1s
Bolton	1	1 + s			2 + 1s
Bristol City	1				1
Bristol Rovers	1 + s				1 + 1s
Cambridge	1 + s	1 + s			2 + 2s
Cardiff		2(1)			2(1)
Charlton		2			2
Chelsea	1	2(1)			3(2)
Coventry			1 + s	s	1 + 2s
Crystal Palace		1 + s(1)			1 + 1s(1)
Derby	1				1
Everton			s		0 + 1s
Grimsby	1	1			2
Leicester		1 + s			1 + 1s
Liverpool			ss	1	1 + 2s
Manchester City			s(1)		0 + 1s(1)
Manchester United			ss	s	0 + 3s
Newcastle	1	1 + s			2 + 1s
Norwich		1(1)	s	s	1 + 2s(1)
Nottingham Forest			s	ss	0 + 3s
Notts County	1 + s		2		3 + 1s
Oldham	1	s			1 + 1s
Orient	1 + s	s			1 + 2s
Preston	s				0 + 1s
QPR	1(1)	2			3(1)
Rotherham		s			0 + 1s
Sheffield Wednesday	1	1 + s			2 + 1s
Shrewsbury	s	ss			0 + 3s
Southampton			1 + s(1)	s	1 + 2s(1)
Stoke			1 + s		1 + 1s
Sunderland				s	0 + 1s
Swansea	1		s		1 + 1s
Tottenham			1	1	2
Watford	1		1		2
West Ham United	1		1		2
Wrexham	2	1			3

18 + 6s (1) 17 + 13s (5) 11 + 13s (2) 2 + 9s (8) 48 + 41s (8)

## LEAGUE CUP

	80-81	81-82	82-83	83-84	Total
Manchester City	1(1)				1(1)
Reading	2				2
Rotherham				1	1
Tottenham			s		0 + 1s
Wrexham		1			1
	3 (1)	1	0 + 1s	1	5 + 1s (1)

## RADDY ANTIC – CAREER RECORD



## FA CUP

	81-82	82-83	83-84	Total
Ipswich	s			0 + 1s
Watford			s	0 + 1s
	0 + 1s	–	0 + 1s	0 + 2s

Stats up to and including 14th January 1984

# Town Focus

## FORUM

THEATRE  
HATFIELD.  
ADVANCE  
BOX  
OFFICE  
HATFIELD  
71217

## REACH FOR THE STARS!

AND LET US GET YOUR WINTER

ENTERTAINMENT OFF TO A FLYING START!

February 18	John Miles	24	Klaus Wunderlich
19	Mezzoforte	30	Stu Francis and the Crackerjack Show
March 1	John Mann	April 10	The Dubliners
	– Organ Concert	13	Alan Price
8	Steeleye Span	14	The Belgrade Strings
10	The Karen Kay Show.	16	Howard Keel
	Guests Barley		
11	Chris Barber's Jazz & Blues Band. Guest Otilie Patterson		





MARK STEIN



MARK WATTS

## CHELSEA 1 LUTON TOWN 0 Football Combination

TEAM: Sealey, Breacker, Turner, Parker, North (S), Goodyear, Antic, Stein, Aylott, Bunn, Nwajobi. Sub: McConville.

On a bitterly cold arctic day, the Town suffered an early set-back when Wayne Turner limped off with a pulled muscle. However, Tim Breacker, Mark Stein and Cahal McConville all came close to breaking the deadlock in what was proving to be a very even struggle. Some of the fluid play by both sides was a credit to watch.

Chelsea, with the wind at their backs in the second-half, pushed forward relentlessly but it was our own Trevor Aylott who missed two good chances before the Blues took the lead from a thunderbolt of a shot by Cannonville.

It was not to be our day, but there were some good individual performances to reflect upon.

## LUTON TOWN 3 READING 0 South East Counties

TEAM: Dunn, Chamberlain, Devine, McEvoy, Burke, Cook, Butler, Doughty, O'Brien, Ellisdon, Reynolds. Subs: Medhurst, Ager. Scorers: O'Brien, McEvoy.

This was our first League game in 1984 and the conditions were difficult underfoot because of the frozen state of the pitch.

The game was fairly even in the first-half with players slipping and sliding everywhere and very wary not to dwell on the ball with balance being the biggest problem. There was a lot of honest effort but constructive football was limited and change of direction impossible.

As the half wore on and the sun affected the playing surface, the players were adapting to the conditions and a few chances started to come our way.

At the start of the second-half we started to dominate the game and a goal soon resulted from picking up a rebound after the original shot had been saved. We then had our best spell of the game, when the conditions seemed to be forgotten as we went in search of further goals. They were not long in coming, two in a short space of time to put us 3-0 up with 15 minutes of the second-half gone.

All credit to Reading in the last 15 minutes. They came back at us in search of a consolation goal, but our lads were determined to keep a clean sheet.

Our scorers were O'Brien and McEvoy.

## READING 1 LUTON TOWN 3 Football Combination

TEAM: Young, Davies, Breacker, Johnson, Nwajobi, North (S), Antic, Driscoll, Stein (M), McConville, Watts. Sub: Oldfield.

On a pitch where half was hard ice and the other half mud, players had a variety of different footwear for the occasion. It seemed not to matter to the Hatters as they took an early lead when Cahal McConville headed in a Danny Driscoll corner.

The score remained the same until early in the second-half when Mark Stein chipped the ball over the keeper for a delightful goal. Cahal McConville then hit the bar following an impressive move. It seemed all Luton until Reading hit a consolation goal.

This gave the Town greater determination to succeed and Emeke Nwajobi finished the scoring for the day with a headed third goal following a fine run and cross by Mark Watts.

## SWANSEA 2 LUTON TOWN 1 Football Combination

TEAM: Beasley, Breacker, Johnson, Parker, North (S), Goodyear, Driscoll, Stein (M), McConville, Daniel, Watts.

The Welsh side started very aggressively and it took some time for us to settle. Mark Watts and Cahal McConville should have scored before the Swans went ahead with a bizarre goal. Ray Daniels' attempted clearance went miles into the air and while our defensive players stood like statues, Bob Latchford headed in from within our six-yard box.

This remained the same until midway during the second-half with Luton piling on the pressure before the equaliser came. A good pass from McConville culminated with a fierce shot by Daniel which was palmed out by the keeper only for Tim Breacker to gleefully sidefoot the ball into the net.

Town continued to press forward, missing a handful of opportunities and, as so often happens, Swansea grabbed the winner when Latchford headed in again following a right-wing cross.

## WAS YOURS AN INSIDE JOB?

GLAZING REPAIRS & GLASS SUPPLIES  
PATIO DOOR & WINDOW INSTALLATIONS  
DOUBLE GLAZING (SECONDARY AND SEALED UNITS)  
INTERIOR AND EXTERIOR DECORATORS

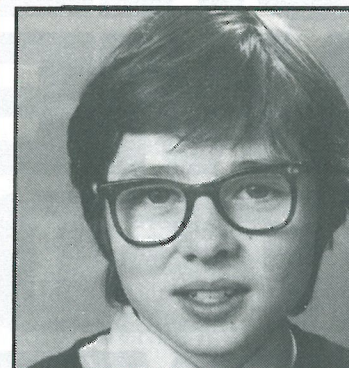
For Domestic and Commercial enquiries contact Luton 53025/597505

**sapsworth**  
GLAZING & DECORATING  
J. Sapsworth Limited  
92 Marsh Road, Luton, Bedfordshire LU3 2NL  
Telephone: Luton (0582) 53025/597505

# junior hatters

JUNIOR HATTERS SPONSORED BY THE HERALD AND CHILTERN RADIO

## THE MASCOT



ADRIAN LINCOLN

Junior Hatters can win Chiltern Radio prizes by listening to the local station's presenter Bill Young in this afternoon's Pop Spot.

Bill will be on the air after this afternoon's penalty shoot-out. Listen for his spot — you could win a prize.

## MASCOT

Adrian Lincoln of Stotfold is 12 and attends Etonbury Middle School. He plays football for Stotfold Junior Under-14s and his interests are football, rugby, drawing, snooker and swimming.

## ESCORTS

Jeremy Broome of Harpenden is seven and attends St Nicholas School, Harpenden. His interests are football, tennis, diving, swimming, dancing and Star Wars.

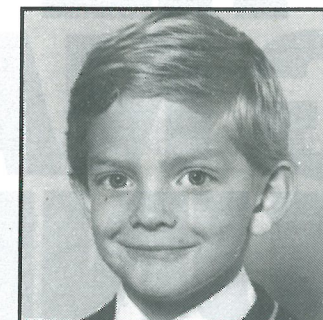
Paul Johnston of Luton is nine and he attends Bushmead Junior School. He plays football for Bushmead Second Year Juniors and Hillborough Hatters. His interests are watching Luton Town playing and swimming.

Graham Hose of Dunstable is 14 and attends Queensbury Upper School. He plays football for Queensbury School 'B' team and his interests are most sports, computers and animals.

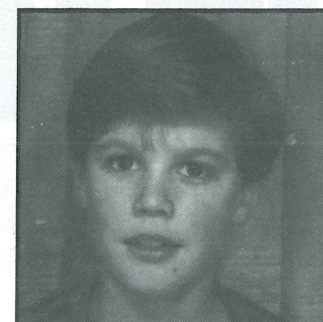
Hiram Hardy of Luton is 12 and a pupil at Ashcroft High School. He plays football for Ashcroft High School and Wiggmore Athletic. His interests are football, cross country, rugby and cricket.

*Bill Young*

## THE ESCORTS



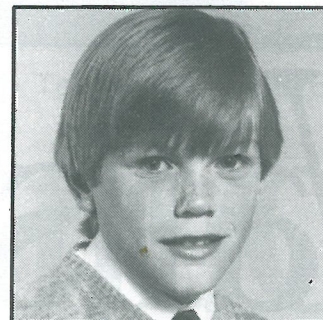
JEREMY BROOME



PAUL JOHNSON



GRAHAM HOSE



HIRAM HARDY

READ THE  
JUNIOR  
HATTERS  
COLUMN

IN YOUR WEEKLY

**Herald**  
just a friend dropping in

PLUS ALL YOUR  
NEWS - SPORT  
COMPETITIONS  
& MUCH MORE!

FOR MORE  
INFORMATION  
RING  
LUTON 415061

CHILTERN RADIO  
BRINGS YOU ALL  
THE SPORTS NEWS

792 KHZ  
828 KHZ

**Chiltern  
Radio**

FOLLOW YOUR  
SPORT WITH  
CHILTERN RADIO



# THE ONE BIG NAME UNITED DON'T HAVE



# Wallspan

Manchester United has always been one of the biggest names in football.

Some would say the biggest.

Their line up is the envy of all their competitors, and we at Wallspan know that feeling very well.

Since 1962 when we first started manufacturing fitted bedroom furniture, we have made it our policy to be the biggest name in the industry.

First with the designs you our customers demand. First with modern production techniques to ensure that our quality and prices are always the best you can get.

Like United our competitors are envious, and try to copy us, but fortunately we're great believers that imitation is the sincerest form of flattery; just as long as you are aware that they are copies and not the real thing.

If you would like to see the line up that has made us so famous, call in at your local showroom. Or for those of you from Manchester who would rather see the line up at home, you can find us at Wades, The Arndale Centre, Manchester.

Wallspan Bedrooms Ltd.  
Industrial Estate, Maulden Road, Flitwick, Beds.

Tel. Flitwick 716161

# Bedrooms



# READERS LETTERS

Dear Mr Pleat, On behalf of the players, officials and supporters of our club I would like to thank you for sending a team to play against us. We were particularly honoured that you fielded a side containing so many players with first team experience at such a congested time of the season. Their inclusion was an excellent boost for our players and a wonderful public relations exercise for Luton Town in our village.

Perhaps you will convey to Trevor Hartley and the players our thanks for the spirit in which the game was played and the patience of the players in dealing with the young autograph hunters after the game.

We hope that this game has forged a link between our clubs which could be of mutual benefit in the future and would like to extend an open invitation to Luton Town FC to come and play at Cranfield again at some time in the future at your convenience.

**L. Corkrey**  
Cranfield Utd FC

Dear David, Thank you for the tremendous help you gave us at Henlow Grange recently. You and your team are splendid people.

**Jimmy Savile, OBE, KCSG**

Dear Mr Wilkinson, You may recall that I wrote to you some weeks ago with a general appeal for information concerning the Town's early years. You will be pleased to know that, through having that letter published in a recent programme, I have been in contact with a Mr A. Shury of Dunstable who was able to provide me

with the information I required. I should like to thank you for your help in establishing this contact.

I should also like to offer a suggestion concerning the unknown Luton player who was mortally injured in a match between 1910 and 1920. In the same season (1911-1912) that saw the Town relegated to the Southern League, Second Division, I believe that one of Luton's full-backs, a player named Wightman, died from injuries received during a match against Brighton.

I believe that the match, played near the end of the season, was played at the Goldstone ground, rather than Kenilworth Road.

I hope that this will be of some use to you.

**Stuart Basson**  
Flat 3, 119 Newbold Road  
Chesterfield, Derbyshire

Dear Mr Wilkinson, You wrote in a recent magazine asking if anyone could help in answering the following questions: Information on Duncan, Napier and Flavel.

The only Duncan I can think of was Dally Duncan. As for Napier and Flavel, neither of them could have been goalscorers as their names don't appear on the goalscoring list I have for that season. They may have been defenders.

I have incomplete lists but they were not with the club when the Football League started in 1946-47. Neither name appeared, even in the Combination list I have.

Sammy Whightman was not killed on the pitch and it was not during the 1919-20 season. He died after the match when the team arrived back in Luton. His death was curious because; as he went to clear the line he was kicked in the stomach and, at first, appeared only to be winded but later in the game he went off. He was examined by the Luton and Brighton doctors and passed fit to travel back to Luton.

But on the train from Brighton to London, he was taken ill and was rushed across London by horse drawn cab and put on the Luton train. His condition worsened and when he arrived back in Luton he was rushed to the Bute hospital where he was

operated on. He died at 3 a.m. the following Sunday morning 5th April 1912. Luton won the match 1-0.

I hope this information will be of use for your programme notes and to the person who made the enquiry.

**B. Ellis**  
Bluebell Wood Close  
Farley Hill, Luton

Dear Sir, I am an 18-year-old Aston Villa supporter and would like to correspond with female supporters of Luton Town aged 16-20. My interests include music, travelling and watching Villa home and away.

All the best for the rest of the season. Keep playing football as you do — its a credit to the game and you deservedly beat Villa in October. I was at Villa Park last week and hoped you enjoyed an equally good game.

**Philip Currah**  
25/6 Outer Grove, Erdington  
Birmingham B23 7XU

Dear Mr Pleat, I have been asked, and enjoy doing so, by my committee to write to you expressing the thanks of all Leicester United Supporters in bringing to our ground a team which gave such first class entertainment and helped to make John Lane's benefit a success.

I believe it was a courageous decision to allow your players of very high standing in the Football League to play that night on a pitch which could have been a lot safer and please pass on to them our appreciation of the sportsmanship.

Once again, many thanks and may we wish you all at Luton Town FC continued success.

**A. May**  
Leicester United FC  
Supporters Club

If you have anything to say about Luton Town FC, drop us a line and we'll do our best to publish your letter. Write to: The Matchday Magazine, Luton Town FC, Kenilworth Road, Luton.

# Competitions

## NAME THE FACES

The winner of our competition in the Watford magazine was David Tilbot of Bambury, Oxon, who correctly named Frank Gray (Leeds), Andy Peake (Leicester City) and Gordon McQueen (Manchester United). David will also receive one of our super videos.

Here is a new phototeazer with again a prize of a super commemorative video. The photo caption shows three players heads mixed up. All you have to do is name the three players and their current clubs. Send your entries to: Luton Town FC, 70/72 Kenilworth Road, Luton, Beds. LU1 1DH.



## NAME THE STAR

Congratulations to Mr D. L. Bowden of Luton, who correctly named Chris Woods of Norwich as the star from our West Brom, West Ham, Nott'm Forest, Watford and Arsenal magazines. The Luton Town video is Mr Bowden's prize.

A new Name the Star competition starts today. As we are sure you all know, we add a small proportion of the body of a famous player inviting you to guess the players identity.

Send your entries to Luton Town FC, 70/72 Kenilworth Road, Luton, Beds. LU1 1DH.



## CLUB '82

**Mr P. J. Sullivan**, Tricentrol Trading Ltd  
Kings Road, Flitwick, Beds.  
Tel: 95-712121.

**J. Fedigan**, Adriatic Enterprises Ltd  
20 St. Margarets Way, Leicester.  
Tel: Leicester 0533-26022/3

**Mr D. Newton**, Lormane Agents Ltd  
72-76 Union Street, Dunstable, Beds.  
Tel: 660272.

**Mr J. Mead**, Pilcourt Ltd  
151 Bearton Road, Hitchin, Herts.  
Tel: 0462-4367.

**Mr G. White**, White's Stationers Ltd  
57 High Street, Woburn Sands  
Milton Keynes MK17 8QY  
Tel: 0908-583291.

**Mr J. Peters**, Avica House  
346 High Street, Berkhamstead.  
Tel: 75977.

**Mr D. Keech**, D. W. King & Co  
Argyll Works, Stevenage, Herts.  
Tel: 0438-4400.

**Mr D. Ludlow**, Ludlows of Luton Ltd  
Thistle Road, Windmill Trading Estate,  
Luton, Beds. LU1 3XJ.  
Tel: Luton 29883/4.

**Mr F. Ludlow**, Frank Ludlow Ltd  
71 Windmill Road,  
Luton, Beds.  
Tel: Luton 414441.

**Mr J. Boylen**, Berkeley Associates  
Printing Specialists, PO Box 332, Newton  
Longville  
Milton Keynes MK1 7QA  
Tel: 0908-75918.

**Mr D. W. Graves**, Westmount  
Gravel Path, Berkhamstead, Herts.  
Tel: 04427-75977.

**Mr F. W. Pearce**, F. W. Pearce (Builders) Ltd  
1a Wilsden Avenue, Luton, Beds.  
Tel: 24163.

**Mr Tony Lambert**, Broad Street Print  
9 Broad Street, Hemel Hempstead, Herts.  
Tel: 0442-65490.

**Mr M. Manning**, Beard & Manning Ltd  
152 Leagrave Road, Luton, Beds.  
Tel: 22538.

**Mr T. Bailey**, Wallspan Bedrooms Ltd  
Industriail Estate, Maulden Road, Flitwick, Beds.  
Tel: 9571-3621.

**Mr D. Rand**, David Rand & Co Ltd  
51 Radlett Road, Frogmore, St. Albans, Herts.  
Tel: 98-72492.

**Mr R. A. Finch**, Computer Technology Ltd  
Eaton Road, Hemel Hempstead, Herts.  
Tel: 82-3272.

**Mr E. Elliott**, Emeralla  
Market Square, Biggleswade, Beds.  
Tel: 0767-313273.

**Mr J. Waller**, Lathom & Co  
King Street, Luton, Beds.  
Tel: 29221.

**Mr E. Edwards**, County Motors Ltd  
Unit 1, 166 Camford Way, Sundon Park, Luton

Building houses to make homes in

at

**Bramingham Road, Luton**  
**Parkside, Houghton Regis**  
**Wallington Rise, Baldock**  
**Two Mile Ash, Milton Keynes**  
**Church Green, Bletchley**  
**Kimbolton Gardens, Bedford**  
**Merton Court, Bedford**  
**Millfield, Bedford**  
**Padbury House, Bedford**

Future development: Astra Court, Luton



# Barratt

LUTON LTD

Telephone: Luton (0582) 422771



# NEWSDESK... NEWSDESK... NEWSDESK...

## AWAY DAY

Here is news of a great away day for Junior Hatters, 5th May, when we play Coventry.

We shall take a party of Junior Hatters to play their Junior Sky Blues counterparts at five-a-side before going on to watch our League game.

We are looking for 30 boys to make up six teams, three for the seven to 10 age group and three Under-13.

If you want to represent the Junior Hatters go to Luton Regional Sports Centre in Stopsley at 10 am on Wednesday 22nd February when we will be organising trials. The only criterion is that you possess a replica strip.

The cost of the coach trip to Coventry is £2, plus £1 for a buffet lunch. Admission to the all-seater stadium is free.

If you intend going to the trials send a letter to: Junior Hatters (Coventry trip), Luton Town FC, 70-72 Kenilworth Road, Luton, stating your age. Closing date for applications is Wednesday 14th February.

## A PROUD ASSOCIATION

Our supporters will no doubt have seen that General Motors have sponsored the FA Charity Shield in addition to backing the Football Association National School at Lilleshall which will open its doors to the first 25 pupils in September.

The FA has already compiled a list of some 50 potential candidates from among the country's top 14-year-olds, recommended by a network of scouts experienced in schools football and will begin discussions shortly with

boys and parents.

The initial intake of 25 will be followed each year by 15 new 14-year-olds and the two-year course will prepare the boys for possible selection for the England Under-16 team and the England Schoolboys' Under-15 team. Not every graduate will go on to play for the full England side, but the professional game will benefit from a steady stream of highly trained players over the years.

The boys will enjoy a first class educational opportunity as the FA has agreed with the Shropshire County Education authorities that pupils of the National School will attend Idsall School in nearby Shifnal. Progressive and friendly. Idsall achieves examination results well above the national average.

As part of their massive sponsorship programme, General Motors have also financially backed the FA Charity Shield.

As our supporters will know, General Motors — under the mantle of Bedford Trucks — also sponsor Luton Town FC and we are delighted to be associated with the company's refreshing outlook in their bid to put English soccer back at the top of the tree.

**CHILTERN RADIO'S POP SPOT**  
We are pleased to welcome Chiltern Radio, co-sponsors with the 'Herald', of our Junior Hatters Club.

From their studios in Dunstable, Bedford, Milton Keynes and Stevenage, Chiltern Radio broadcast to a wide area of listeners in Bedfordshire, Hertfordshire and Buckinghamshire.



The local station has agreed to provide a Pop Spot for a period before all home games until the end of the season when supporters can listen to all the top sounds presented by a professional presenter.

In addition, Junior Hatters Club members will be invited to answer simple questions and the correct answers can win them Chiltern Radio prizes.

Chiltern Radio presenter Bill Young, whose daily programme is broadcast between 9.30 am and 12.45 pm Monday to Friday, also hosts the Sunday Weekender programme.

Bill is our first guest and we hope he and his wife enjoy their afternoon with us. We are equally sure you will enjoy his Pop Spot.

## ON THE BALL WITH WALLSPAN

In addition to sponsoring this afternoon's match, Wallspan Bedrooms' chairman and managing director Terry Bailey is also presenting a Miracard ECG recorder heart machine to Keith Castle, Britain's longest heart transplant patient, who will receive it before the game on behalf of the Pap-

worth Hospital.

Terry is also backing the pre-match shoot-out involving Jimmy Greaves, Ian St John and Gordon Banks — another example of Wallspan's involvement in local sport. The players will be introduced to you by Anglia Television sports editor Gerry Harrison.

Mr Bailey decided to donate the machine to the hospital after meeting Mr Castle at one of our recent games.

'I was tremendously impressed with the way Papworth Hospital greatly assists people suffering from heart diseases and decided I wanted to help,' Terry told us.

'I thought the best way was to donate a machine which would help the hospital with their excellent work, although I sincerely hope I never have to take advantage of their facilities!'

When the presentation is made, give Terry a huge round of applause — he really deserves it.

## GUESTS FOR THE DAY

Bedford Trucks took the opportunity to entertain their Midlands' dealers to some VIP treatment at Molineux before we beat Wolves 2-1.

The visitors are pictured after taking a look at our luxury team coach, provided by the company as part of their sponsorship deal with us.

## CENTURY CLUB

A month with no home game is a long break, and this year so far, postponements have not been due to adverse weather conditions but to Ipswich being Cup-tied.

Today we welcome Manchester

United, another of the great teams in English football who command the interest of everyone. Although it is a Sunday game, we have a full house in the Century Club, and we look forward to a good afternoon.

Sunday soccer is received with mixed feelings by many supporters, but an interesting theory put forward by others is that Sunday football may be the answer to some of the problems local traders experience on Saturdays, the traditional day, and also that car parking may be easier on Sundays. Worth a thought, don't you think?

## TODAY'S REFEREE

Alan Robinson of Waterloooville, Hants, commenced refereeing in 1956 and progressed through Portsmouth

and Hampshire Leagues and Football Combination to the Football League. Refereed the 1976 FA Challenge Vase Final, and a 1980 Football League Cup semi-final; also linesman for the France v Rumania international in 1974 and the FA Cup Final 1980.

A married man, with one daughter, he is a Civil Servant, with interests in philately and squash. Has been Overseas and Services Divisional Secretary of the National Council of the Referees' Association since 1968.

In addition he was Secretary — for 12 years — and is now President of the Portsmouth Referees' Society. He is FA area advisor for Referees and holder of the National Referees' Association meritorious award.



# THE LOCAL TASTE AND HOW TO SATISFY IT

We're very definite about our taste in beer around here. A clear light pint is what we look for; with a good, clean smack of malt and hops.

And there's only one name that really satisfies the local taste — BB. The light beer first brewed in Luton during the darkest days of the War by J. W. Green.

Only the finest hops and good, ripe barley go into the making. Then the brew is matured to exactly the right degree to give you a bright refreshing pint with a sound, full flavour.



WHITBREAD

American servicemen in local wartime bases declared that BB, chilled, was the nearest taste to Stateside draught.

It went down well when Syd Owen ruled the Hatters.

And it's been going down well ever since. Because BB is brewed with a proper respect for quality. To keep up the traditions we value round here.



## Graham Ford

Your Comprehensive Builders Merchants



Depots at:  
LUTON — KINGSWAY 31199  
DUNSTABLE — BEALE STREET 603111  
LEIGHTON BUZZARD — LEIGHTON ROAD 373486



## Falcon

WE  
KNOW  
WHERE  
WE'RE  
GOING.

FALCON HOLIDAYS LTD

Take no chances book with a bonded A.B.T.A. member. Phone now for a copy of our latest brochure

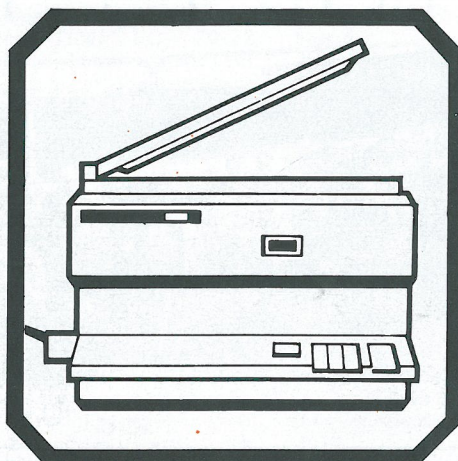
FALCON HOLIDAYS LTD

190 Campden Hill Road  
London W8  
Telephone: 01 221 6298



# Why do more businessmen in Britain, Europe and North America choose Canon?

Canon



The Canon NP range of copiers combines high speed with economy and compactness with versatility.

From the Personal Copiers right up to the NP500 at the top of the range, Canon has a copier to suit every business requirement.

# Canon Copiers

Canon (UK) Limited, Waddon House, Stafford Road, Croydon CR9 4DD.

# HATTERS WHO'S WHO

Tony Pullein continues his series on former Luton players. This week he features Gordon Turner, one of the all-time Kenilworth Road favourites.

Gordon Turner averaged more than a goal in every two games played for the Hatters over a 14 year period and his tally of 243 League goals remains to this day a club record. But he would happily have traded in all those memories for the chance to have played at Wembley in the 1959 FA Cup final.

Gordon, who died in 1976, 'always cursed his luck that he should suffer the one real off period of his career just at the time Luton progressed to Wembley. 'It's every footballer's dream to play at Wembley and I kept hoping I might be recalled,' he said in later years.

'We had a selection committee of directors at the time as manager Dally Duncan had left at the beginning of the season,' he added. 'They felt they should stick to the side that had won its way to Wembley and I suppose they had a point.'

With hindsight, the directors might have opted to bring Gordon back into the side for the Hatters had a real off day at Wembley, losing to 10-man Nottingham Forest.

Gordon's father had been a pre-war professional with Hull City, playing in the same side as Dally Duncan. So, when Duncan was in charge at Kenilworth Road, and heard about the budding Turner's goalscoring achievements, he decided to sign him.

## LEADING SCORER

Gordon made his Luton debut in 1950-51 and a couple of years later he won a regular place. In one purple period he led our scoring list for five successive seasons.

During our promotion season, Gordon banged home 32 League goals and quickly settled down to scoring goals against First Division defences. So well did he perform in his early games at the top that he was selected for the Football League XI against the Scottish League at Hillsborough in October 1955.

'That was a big thrill for me,' he said later. 'Our team contained such stars as Bert Williams, Jeff Hall, Roger Byrne, Billy Wright, Jimmy Dickinson, Tom Finney, Johnny Haynes and Nat Lofthouse.'

Gordon marked the occasion with a goal in a 4-2 victory.

At the time it was felt that he would be picked for England. Lofthouse was the regular centre-forward, soon to be followed by Tommy Taylor, but Gordon was among several inside-forwards pressing for a place at number eight. John Atyeo, Don Revie and Denis Wilshaw were Gordon's main rivals for the England spot but many felt his consistent goalscoring warranted a cap.

Sadly, he was never given the chance to prove himself and, after maintaining such a high scoring rate for five years, he began to go off the boil just as our Wembley run got under way during the latter part of the 1958-59 campaign.

## AGONISING TIME

Bob Morton was switched to attack and Allan Brown filled Gordon's usual position. It was an agonising time for him to be slumming it in the reserves when his goals had done so much to establish Luton as a First Division club. But he took it like the true professional he was and the following season got down to re-establishing himself in the side.

But it was a long while before he really found his touch again and by then Luton were back in the Second Division.

For two seasons Gordon returned to his old form but the team itself was on the slide and Gordon completed his playing days in the Third Division.

He was approaching the age of 34 as the 1963-64 campaign drew to its close and he had created a fabulous club record of 243 goals in League soccer. Today, 20 years on, that remains a record and, with no challengers on the scene at the moment, it could stand for very many more years.

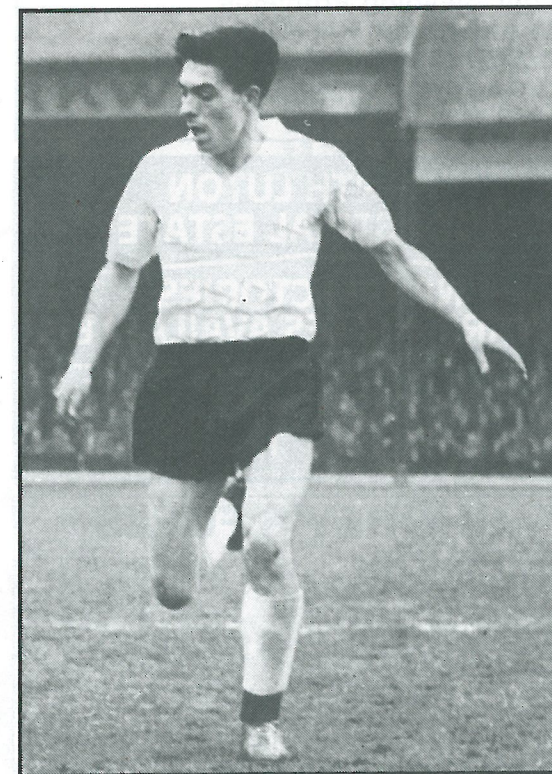
During the entire history of the Football League, only 11 other players have scored more League goals for a single club. And that list sounds like an excerpt for a Soccer Debut — Dixie Dean, Roger Hunt, Steve Bloomer, Nat Lofthouse and George Camsell number among them.

It's a tribute to Gordon's achievements that his name lives on among such legendary soccer figures as those.

## LEAGUE CAREER:

	Apps	Gls
Luton	1950-51	2
	1951-52	11
	1952-53	21
	1953-54	32
	1954-55	42
	1955-56	33
	1956-57	34
	1957-58	40
	1958-59	31
	1959-60	31
	1960-61	37
	1961-62	33
	1962-63	32
	1963-64	27
	<b>406</b>	<b>243</b>

TONY PULLEIN





*Your local suppliers of  
printed polythene & paper bags.  
Short runs a speciality.*

**Princess Packaging Ltd.**

HEATHFIELD WORKS, LEYTON ROAD, HARPENDEN, HERTS.  
AL5 2JB TEL. (05827)66806 OR 64431 (24 HR. SERVICE).

For all your  
Floral arrangements contact:

**INBLOOM**  
(Suppliers to Kenilworth Suite)  
45 Latimer Road, Luton

## **Cleandustrial Services Ltd**

The Professional Approach to  
Your Cleaning Problems  
**84 Aldermans Hill N13**  
Official Cleaning Contractors to  
Luton Town FC  
Telephone: 01-882 4626

## **NORTH LUTON INDUSTRIAL ESTATE**

**NEW FACTORIES/  
WAREHOUSES AVAILABLE**

FULLER PEISER **St Quintin**  
01-499 8931 01-499 8626

## **SHOREY'S FUELS**



ANTHRACITE  
PHURNACITE  
COALITE  
REXCO  
HOMEFIRE  
COAL

**YOUR NATURAL WARMTH  
FROM YOUR LOCAL  
SOLID FUEL MERCHANT**

28 Sheepfold Hill, Flitwick, Bedfordshire  
Telephone: Flitwick 713289 Silsoe 60694

# **John's**



# **Journal**

**JOHN WILKINSON - CLUB SECRETARY**

A few weeks ago I was asked the name of the player who died while playing for Luton Town. After making an extensive search through the club records, I came up with nothing.

I then received a letter from Mr Brian Ellis of Farley Hill, Luton, giving me details of the player concerned. Also, Brian Swain of the 'Luton News' searched through his records and between them we have come up with the following information.

Luton Town full-back Sammy Wightman died as a result of an injury received in a Southern League match on Easter Monday 8th 1912 at Brighton.

Wightman was clearing the ball by booting it into touch in the second-half when he was kicked in the stomach. He walked off the pitch believing he was winded. But when the injury was discovered to be more serious he was rushed home to Luton. He had to go by cab to Brighton station, train to London, cab across London and train to Luton. Part of the journey was in darkness because the lights failed on the train.

His condition deteriorated on the journey home and, the following day after seeing his doctor, was taken to the Bute Hospital for an emergency operation by a London specialist.

Wightman, who was 24, recovered consciousness on the Wednesday morning but died hours later. Incidentally Brighton won the match 1-0.

My thanks to Mr Ellis and Brian for their efforts and my effort is the Luton team that day: Naisby, Wightman, Potts, F. Hawkes, Bushell, R. M. Hawkes, Coxhead, Walker, Walden, Moody, Stephenson.

It is with regret we record the death of John Kay, one of our employees. We extend our sympathy to his family.



# **MEMORY LANE JOHN ASTON**

Son of a former Manchester United and England full-back, John spent seven seasons at Old Trafford, the highlight of which must have been the European Cup Final at Wembley in 1968 when United beat Benfica 4-1.

He made 139 appearances for United before manager Harry Haslam persuaded him to join the Town in 1972. In the five seasons at Kenilworth Road he made 171 appearances and scored 31 goals.

He was a firm favourite with the Hatters supporters, and joined Mansfield after leaving Luton where he had one season before ending his Football League career with Blackburn.

# **Anglia Television**

Proud to serve  
the  
East of England.





## Today's Sponsor... Today's Sponsor

Terry Bailey, chairman and managing director of today's sponsors Wallspan Bedrooms, is devoted to sport almost as much as he is to his flourishing company.

Perhaps the best example of his refreshing willingness to become involved with the local sporting scene was his sponsorship of our magnificent electronic scoreboard.

That piece of equipment is the best and most sophisticated in Britain and we are naturally proud that Terry should have such close links with us at Kenilworth Road.

Today's game is not an isolated instance of his sponsorship of matches at Luton. He has supported the club on a wide horizon and we are grateful for

his involvement with us.

Luton Town FC is not, however, his only involvement with local sport.

He sponsors Servowarm Isthmian League side Barton Rovers and is the club's president after playing for the village side not too many years ago.

He is also closely involved with the boys' and youth clubs with more sponsorship.

Last year he backed the prestige UK v America international amateur boxing tournament at London's Grosvenor House Hotel.

His annual Wallspan golf tournament attracts top competitors who compete at the Woburn course for valuable prizes and Terry has recently been elected a member of the Variety Club and

Lords Taverners.

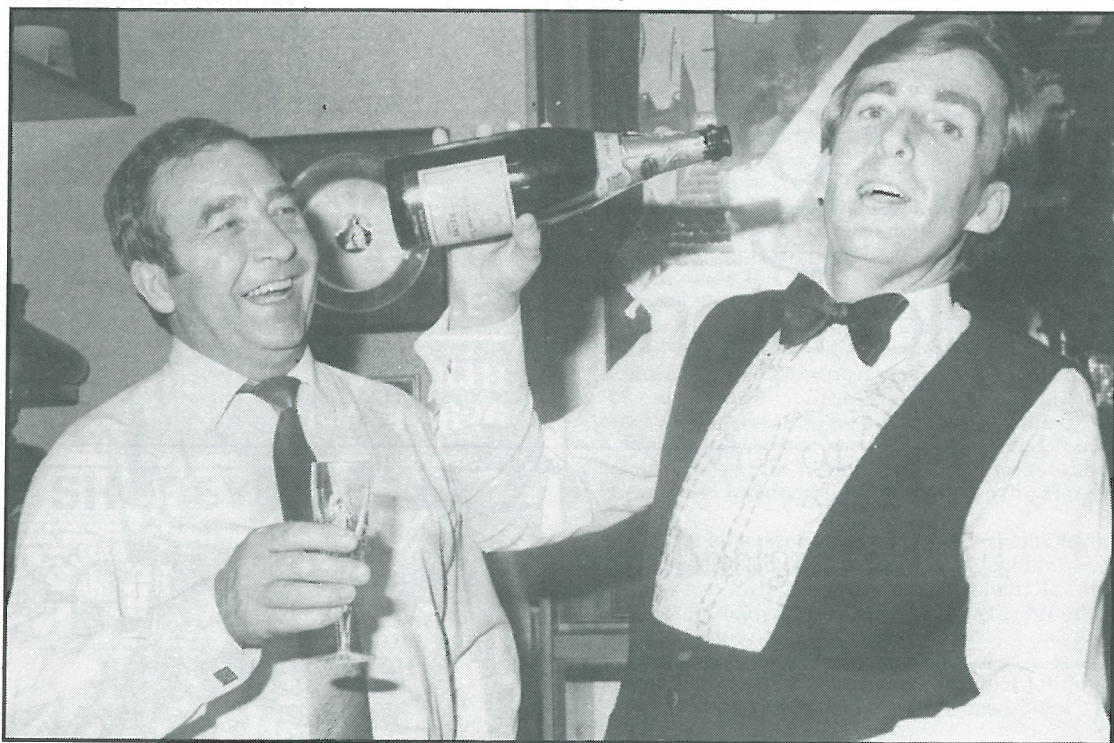
His involvement with local sport is as successful as his Flitwick-based company.

Wallspan has showrooms throughout the UK and there are plans to increase the company's selling power by opening new units in Paris, Bonn, Geneva and New York to augment an already heavy export programme.

The company makes no secret of the fact that their products are the best — and cheapest — on the market.

When it comes to fitted bedrooms and sports sponsorship, there is no better deal than Wallspan.

We are delighted to welcome Terry and his guests today. We sincerely hope they enjoy their afternoon with us.



Terry Bailey, pictured with Terry Griffiths, at a recent Wallspan snooker event in Flitwick.

## Travel...



## Travel...



### Southampton Tourism Marketing

Tourism Unit  
Civic Centre  
Southampton  
SO9 4XF

(0703) 832695/832712  
Telex 47331 SOTLIB G

Direct Dial: Soton 832712

Our Ref GS/CH

Your Ref

To:- Luton Football Club Supporters

24th January 1984

Dear Hatter!

You are guaranteed a super weekend when you play Southampton as you only have to ask 30 of your fellow supporters who joined us last year for the first "Breakaway Soccer Weekend".

We have arranged for you return coach travel from Luton, 2 nights at the 3 Star Southampton Park Hotel, including breakfast, temporary membership of the Southampton Supporters Club - enabling a disco one evening, as well as drink at club prices, a guided tour of The Dell, the opportunity to meet our players, match seat and programme, dinner on arrival at the oldest inn in town, a Sunday morning excursion to the New Forest, as well as a tour of the Docks, the City and free time for shopping. We are usually able to arrange for coffee at the Supporters Club after the match as well. In short you are guaranteed a first class weekend and a unique way to enjoy an away match. For those who are interested, please contact John Gornell at the Kenilworth Road Box Office, who is co-ordinating arrangements from your end. For general information - especially for those who want to make their own way to Southampton, please contact my office in order that we may quote you a price. A full refund will be offered, should the match be postponed for any reason.

The price for the above arrangements is £45.00 all inclusive. Children sharing parents bedroom need only pay £25.00 each. Should we manage to get a full coach load together, we would hope to reduce the cost to children by offering a small rebate.

I hope you can make it to Southampton - we can provide lots of good references from the 30 supporters who came down last year, so tell your friends as well!

Looking forward to seeing you.

Yours faithfully,

*Graham Shaw*  
Graham Shaw  
Publicity and Tourism Officer

**Southampton  
Leisure Services**

Director: J. D. J. Bullock, F.I.L.A.M. (Dip), F.T.S., M.I.P.R.



## NOW UNITED GO FOR THE TITLE

Manchester United's shock elimination from both Cups by Third Division sides has at least given them the consolation of being able to concentrate most of their efforts into wresting the League Championship from Liverpool.

United are still involved in the European Cup-Winners' Cup, of course, but there can be little doubt that their main objective is the League title which has eluded them since 1967.

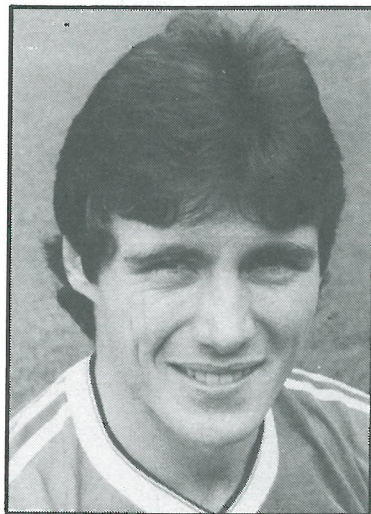
United's failure at Bournemouth (0-2) in the FA Cup and Oxford (1-2) in the Milk Cup did not seem to adversely affect their League form. The Reds slipped sharply back into top gear and a recent run of eight undefeated games in the League took them to within two points of leaders Liverpool.

Norman Whiteside had now resumed his partnership with Frank Stapleton in attack after being replaced for a while by Garth Crooks, who was on loan from Tottenham.

Whiteside, whose explosive entry into top football took the country by storm two years ago, hasn't looked consistently so sharp in front of goal this season for United, even though he has scored in three of his four internationals for Ireland.

He scored in his first full game for United towards the end of the 1981-82 campaign and earned himself a place in Ireland's World Cup team on the strength of his early performances. He now has 12 caps.

Last season he scored 14 times for United but he has netted only six this season.



FRANK STAPLETON

### LEADING SCORER

Stapleton, leading scorer with 15, has been in top form this season. Now a fixture in the Republic of Ireland team with 36 caps, Frank has been United's top scorer every season since his £900,000 transfer from Arsenal in 1981. Frank hit well over 100 goals for Arsenal following his debut in 1975.

Arthur Graham, who plays on the flank, has proved one of the bargain buys of modern times. He was signed from Leeds for only £50,000 last summer but the sad injury, which led to the end of Steve Coppell's career, and the broken leg so tragically incurred by Alan Davies in a pre-season game, ensured that Arthur went straight into the first team.

Aberdeen introduced Arthur to top football in 1970 and Leeds paid £120,000 for him in 1977. During his stay at Elland Road he was capped ten times by Scotland.

Ray Wilkins, Bryan Robson and Arnold Muhren form one of the strongest midfields in the First Division. Both Wilkins and Robson have skippered United and England.

Wilkins began his League career with Chelsea in 1974 and it was after they were relegated that he moved on to United for £750,000 in 1979. Ray has played for England on 55 occasions.

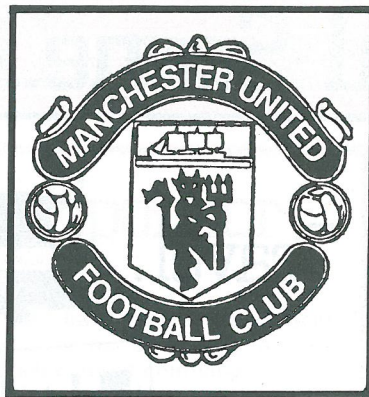
Robson is England's current captain with 29 caps. He started his career with West Bromwich and has developed enormous talents. He has played for England in his usual midfield position but he has also operated very effectively as a sweeper. He has a special talent for scoring long range goals. When United signed him in 1981 the £1,750,000 fee was a British record and is likely to remain so for a long while.

### FREE TRANSFER

Muhren is a Dutch international who first entertained English fans following his £150,000 transfer from FC Twente to Ipswich in 1978. When his Ipswich contract expired in 1982, United were able to sign him on a free transfer.

The veteran Lou Macari is still very much a part of the United squad, and is very often their substitute. Lou won a string of honours with the ultra-successful Celtic side of the early 'seventies and joined United for £200,000 in 1973. He has been capped by Scotland on 24 occasions.

Remi Moses is another midfield player who has been proving his versatility. He has also filled both full-back positions during emergencies. Remi started with West Bromwich and was capped eight times by the England Under-21s. He moved on to United for £500,000 in 1981.



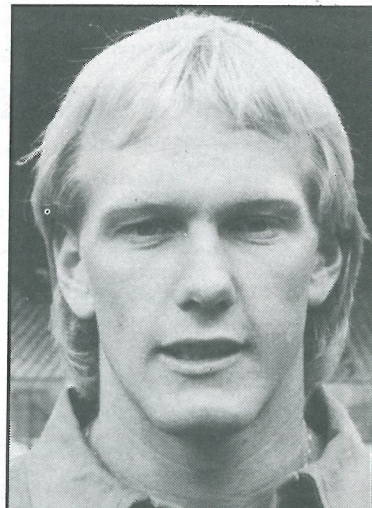
Kevin Moran and Gordon McQueen were the usual centre-backs until the latter was injured, since when Mike Duxbury and Graeme Hogg have both been included.

Moran made his League debut at Southampton in April 1979 and has been a regular for almost four years. He has been capped 16 times by the Republic of Ireland.

McQueen played for Scotland on 30 occasions. His career started with St Mirren but it was after his £35,000 transfer to Leeds in 1972 that he made serious progress. Gordon enjoyed the latter part of Leeds' great days and moved on to United for £500,000 in 1978.

### FULL CAP

Duxbury is, of course, normally United's right-back but he has often switched successfully to the middle of the defence. He came into the United side three seasons ago and, following Under-21 honours, won his first full



GARY BAILEY

# UNITED

England cap against Luxembourg this season.

Graeme Hogg served his apprenticeship at Old Trafford and made his first senior appearance at Bournemouth in the FA Cup. He held his place for the following games at Queens Park Rangers and at home to Southampton.

Arthur Albiston, subject to injuries, is United's left-back. He made his bow in League football in 1974 and has been capped by Scotland four times.

Keeper Gary Bailey has been on the fringe of the England team for some while. A United debutant in 1978, he has since held his place and has won England Under-21 caps.

The strange thing about United's

record this season is that although they have been beaten twice on Third Division grounds, their only away reverse in the First Division was at Southampton (0-3) back in September!

The Reds have won away to Stoke (1-0), Arsenal (3-2), Sunderland (1-0) and Ipswich (2-0) and drawn at Norwich (3-3), Leicester (1-1), West Ham (1-1), Coventry (1-1), Liverpool (1-1) and QPR (1-1).

In the Milk Cup they won at Port Vale (1-0) and Colchester (2-0) and drew at Oxford (1-1) before returning for a second replay which they lost 2-1 after extra time.

The FA Cup holders were beaten at the first stage at Bournemouth 2-0 but

they are unbeaten away from home in Europe. After being held to a 1-1 home draw by Dukla Prague, they drew the return 2-2 in Czechoslovakia to win on away goals.

They then won 2-1 away to Spartak Varna and secured a further victory (2-0) in the return at Old Trafford.

Now United face a tough quarter-final tie against the Spanish club Barcelona.

United appeared in two Wembley finals last season, losing to Liverpool in the Milk Cup, then defeating Brighton in a replay to win the FA Cup for the fifth time. The Reds won the European Champions' Cup in 1968 and have been League Champions on seven occasions.



Back row (left to right): Frank Stapleton, Gary Bailey, Gordon McQueen, Jeff Wealands, John Gidman.  
Middle row: Mick Brown (Assistant Manager), Alan Davies, Mike Duxbury, Bryan Robson, Kevin Moran, Arnold Muhren, Norman Whiteside, Jim McGregor (Physio).  
Front row: Arthur Albiston, Lou Macari, Arthur Graham, Ron Atkinson (Manager), Ray Wilkins, Remi Moses, Steve Coppell.



# LUTON'S FUTURE

Previous articles in our matchday magazine have highlighted the problems facing the club in respect of the A505 relief road which is scheduled to eat away part of the valuable facilities at the rear of the Main Stand.

Today, we examine the contents of a fascinating book, *Soccer: The Road To Crisis*, written by Anton Rippon. It exposes many of the problems facing other clubs, particularly Luton Town, and we take this opportunity of presenting extracts from it.

'Clubs do not possess the resources to turn 19th-century soccer grounds into futuristic stadia. Luton Town will have to move from their present Kenilworth Road ground in the second-half of the eighties because of a road scheme, and the Football League has approved a plan for a new £20 million stadium at Milton Keynes.

'This move to a brand new stadium has been forced upon Luton and generally the prospect of watching soccer in comfortable and warm grounds in the middle of an English winter is one which eludes supporters, simply because a largely bankrupt game cannot afford them.

'At the beginning and end of the season, when the weather is kinder, the modern supporter may well take his family to the countryside or the sea and the emancipation of the working-class wife has had a profound effect on football attendances. Professional football has many counter-attractions to fight. People who go to football out of sheer habit are a dwindling breed. The cloth cap and muffler brigade of Priestley's *The Good Companions* grow fewer in number each season.

'Accepting that the attendance figures will not increase, how then can soccer retain those spectators who have remained loyal to the game? The main complaint from *the-man-on-the-terrace* is that soccer is less entertaining. The product is not up to scratch. Yet although we have to allow that there are less truly outstanding players, can we really believe that skill has declined? Perhaps the very definition of that description, the *outstanding* player, holds the key to the argument. The great players of yesteryear stood out, not only because they were great players, but because there were

so many ordinary players.

'The eighties see footballers with a higher degree of fitness and organisation, so that the great players do not have the opportunity to shine in the same way as those of other days. Probably there are fewer great artists because players have been instructed first and foremost in the importance of workrate, fitness and organisation and there is no footballer today who is allowed the luxury of playing only a small part in the team game in return for flashes of potentially match-winning brilliance.'

## HIGHLIGHTED

Our arguments that a new covered stadium is of paramount importance to the club is highlighted in the book by a reference made by Aston Villa manager Tony Barton after his club had become Champions of Europe only to see attendances slump in the following season.

Barton says: 'Visits by Liverpool and Manchester United will always attract larger attendances as will our local derby matches against Birmingham.

'But people with less money to spend become more selective and if they buy a season ticket that commits them to watching less glamorous teams. The answer is to pay at the turnstiles to see the big clubs and give teams like Notts County, Luton and Norwich a miss.'

We do not agree with the argument that Luton are a 'less glamorous team'. While it may be true as far as our facilities are concerned, it certainly isn't in respect of the team's performances on the pitch.

The book's author also examines closely the future of our national game and arrives at some frightening conclusions. Again we quote:

## ALARMING

'What might be the face of football in the year 2000 AD? Indeed, will there be a professional game at all? Certainly, if clubs do nothing to check the alarming financial problems bedeviling them, and if attendances continue to fall at the present rate, then there is every prospect that professional football in its present form will have disappeared from the social fabric of Britain.

'Of course, that is supposing that no one in the game, either at club, League or FA level, is prepared to change at least some aspect of a sick sport; and surely enough people in soccer will have woken up sufficiently soon enough to prevent such a situation. Indeed, the very fact that the subject is now being earnestly debated is evidence, surely, that football's rulers are aware of the dangers besetting their game, whereas in the past the clubs have gone merrily downhill, spending enormous sums of money in the face of declining interest in their sport, apparently oblivious to the fact that they were committing suicide.

'Realism in the financial side of the game will have to be the first priority. Already the transfer market has collapsed and it is unlikely that we shall again see players changing hands for seven-figure sums.

'Wages will presumably follow suit and as young players come into the game their salaries will be fixed at a lower rate than those who benefited from the days of financial recklessness, although in June 1983 Arsenal were reported to be offering the Scottish international Charlie Nicholas, still a relative novice in the game despite scoring over 50 goals for Celtic and Scotland in 1982-83, the

# LUTON'S FUTURE

**'Soccer's cloth cap and muffler brigade grow fewer in number each season.'**

staggering weekly wage of £2,400 — a sum which, if invested wisely, will have made the 21-year-old Scot a millionaire by the time his projected four-year contract with the London club expires.

'Tottenham Hotspur was another club reputed to be ready to pay a staggering amount to one player in 1983-84. It was reported that Spurs' midfield star Glenn Hoddle would collect close to a quarter-of-a-million pounds for a single year's work. Hoddle's contract was at an end and with the Scottish star Nicholas just down the road at Spurs' North London rivals, the White Hart Lane club were apparently prepared to hold on to its

own stars at any price. Yet surely such salary arrangements must be the exception rather than the rule for the future.'

## SUPPORTED

Our reasoning that, in future, stadiums MUST be used for more than one sport, is supported in the book which continues:

'The days of 40 million people going through the turnstiles each season will never return so football must base its plans on the present near 20 million and work at retaining them and on running its finances accordingly.

'There is now a wider range of sports open for him to take part in — squash

and badminton, for instance, have increased hugely in popularity.

'People live far more sophisticated lives in the eighties and the prospect of standing or sitting at a football stadium in below zero temperatures is not so attractive for the modern fan who lives in a centrally-heated home.

'His father, who may have been used to trudging to an outside lavatory at the bottom of the garden in the small hours would have been prepared to endure such hardships.

'People who go to football out of sheer habit are a dwindling breed. The cloth cap and muffler brigade of Priestley's *The Good Companions* grow fewer in number each season.'

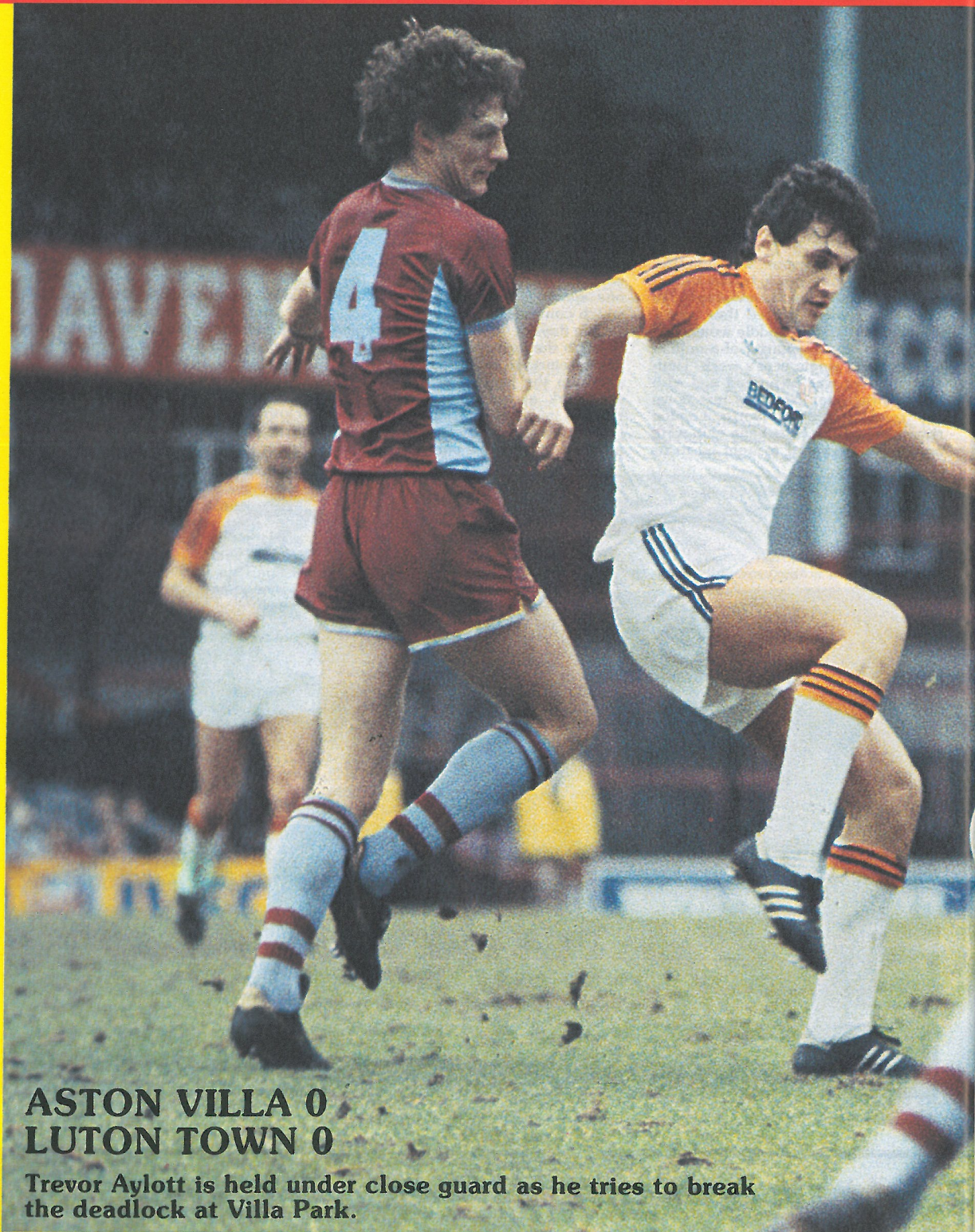


A perfect example of the fine facilities offered by American indoor stadia.

**More articles on Luton's future will be published in future editions of your Matchday Magazine**

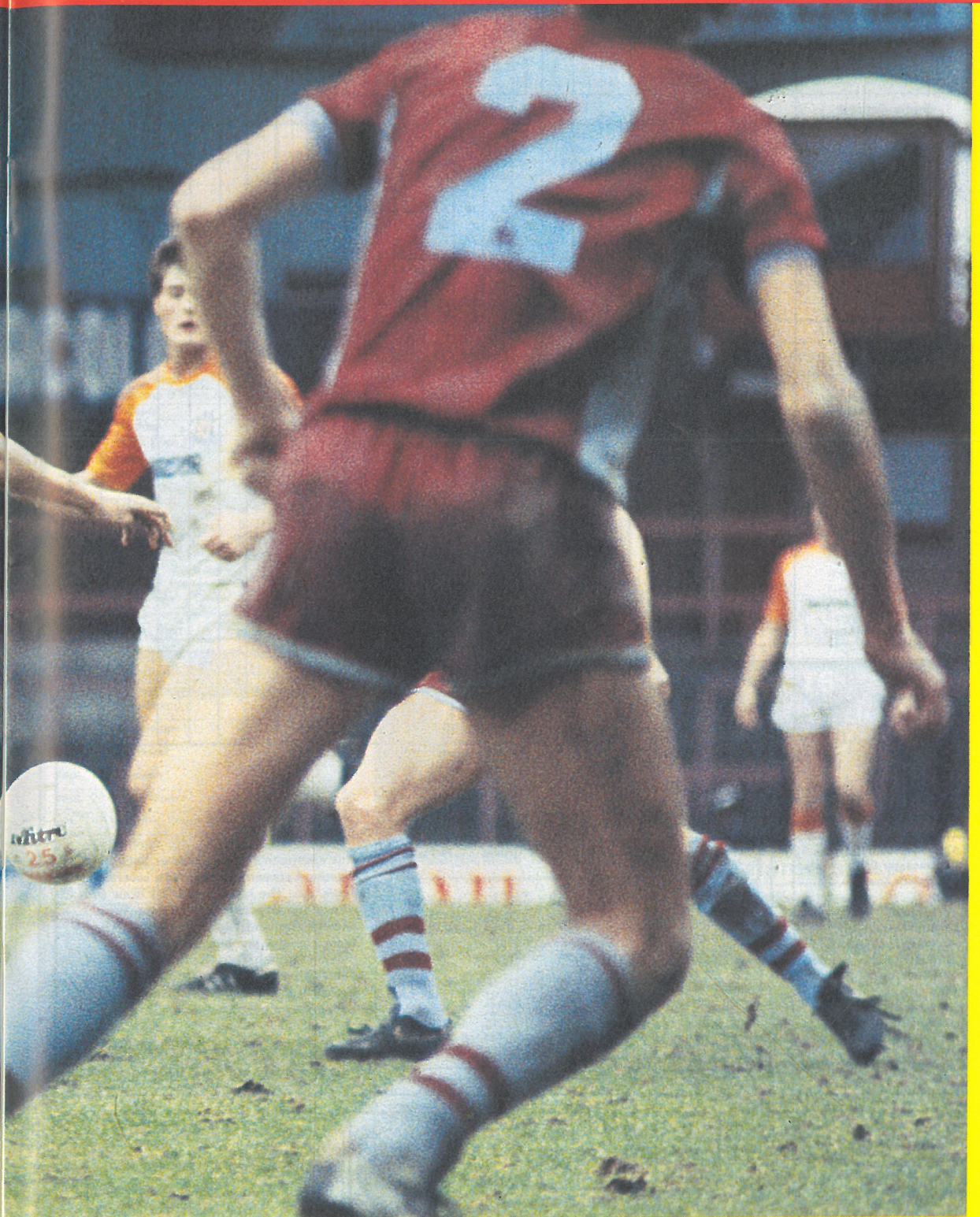


# REPLAY IN COLOUR. . . REPLAY IN COLOUR



**ASTON VILLA 0  
LUTON TOWN 0**

Trevor Aylott is held under close guard as he tries to break the deadlock at Villa Park.





# TOWN RECORD '83/84

Opponents	Result	Attendance	Points	Position	Sealey	Stephens	Turner	Horton	Elliott	Donaghy	Hill	Stein	Walsh	Bunn	Moss	Antic	Aylott	Daniel	Thomas	Parker	Johnson	Goodyear	Nwajobi	Own Goals
<b>Goals Scored</b>								2	2	1	2	8	13	3	3		7	2		1			2	3
<b>1983</b>																								
<b>August</b>																								
27 Arsenal	1-2	39,348	—	—	1	2	3	4	5	6	7	8	9	10	11	—	—	—	—	—	—	—	—	—
31 Leicester City	3-0	11,929	3	—	1	2	3	4	5	6	7	8	9	10	11	—	—	—	—	—	—	—	—	—
<b>September</b>																								
3 Sunderland	*4-1	10,846	6	5	1	2	3	4	5	6	7	8	9	10	11	—	—	—	—	—	—	—	—	—
6 Norwich City	2-2	11,905	7	5	1	2	3	4	5	6	7	8	9	10	11	—	—	—	—	—	—	—	—	—
10 Manchester United	0-2	41,013	7	8	1	2	3	4	5	6	7	8	9	10	11	—	—	—	—	—	—	—	—	—
17 Wolverhampton W.	4-0	10,975	10	7	1	2	3	4	5	6	7	8	9	10	11	—	—	—	—	—	—	—	—	—
24 Nottingham Forest	0-1	16,296	10	13	1	2	3	4	5	6	7	8	9	10	11	—	—	—	—	—	—	—	—	—
<b>October</b>																								
1 Aston Villa	1-0	12,747	13	9	1	2	3	4	5	6	7	8	9	10	11	—	—	—	—	—	—	—	—	—
4 Rotherham (MC2-1L)	3-2	4,035	—	—	1	2	3	4	5	6	7	8	9	10	11	—	—	—	—	—	—	—	—	—
15 Everton	1-0	14,325	16	7	1	2	3	4	5	6	7	8	9	10	11	—	—	—	—	—	—	—	—	—
22 Southampton	3-1	12,389	19	4	1	2	3	4	5	6	7	8	9	10	11	—	—	—	—	—	—	—	—	—
25 Rotherham (MC2-2L)	0-2	6,755	—	—	1	2	3	4	5	6	7	8	9	10	11	—	—	—	—	—	—	—	—	—
29 Liverpool	0-6	31,940	19	6	1	2	10	4	5	6	7	8	9	—	—	—	—	—	—	—	—	—	—	—
<b>November</b>																								
5 Queens Park Rangers	1-0	15,053	22	4	1	2	3	4	5	6	7	8	9	—	—	—	—	—	—	—	—	—	—	—
12 Birmingham City	1-1	11,111	23	5	1	2	10	—	5	6	7	8	9	—	—	—	—	—	—	—	—	—	—	—
19 Tottenham Hotspur	2-4	17,275	23	10	1	2	3	—	5	6	7	8	9	—	—	—	—	—	—	—	—	—	—	—
26 Watford	2-1	17,791	26	5	1	2	3	4	5	6	7	8	9	11	—	—	—	—	—	—	—	—	—	—
<b>December</b>																								
3 Coventry City	*2-4	10,698	26	10	1	2	3	4	5	6	7	8	9	11	—	—	—	—	—	—	—	—	—	—
10 Stoke City	4-2	10,329	29	8	1	2	—	4	5	6	7	8	9	—	—	—	—	—	—	—	—	—	—	—
18 West Bromwich Albion	2-0	11,566	32	6	1	2	—	4	5	6	7	8	9	—	—	—	—	—	—	—	—	—	—	—
26 Notts County	3-0	9,789	35	3	1	2	—	4	5	6	7	8	9	—	—	—	—	—	—	—	—	—	—	—
27 West Ham United	0-1	16,343	35	5	1	2	12	4	5	6	7	8	9	—	—	—	—	—	—	—	—	—	—	—
31 Sunderland	0-2	19,482	35	6	1	—	3	4	5	6	7	8	9	10	—	—	—	—	—	—	—	—	—	—
<b>1984</b>																								
<b>January</b>																								
2 Nottingham Forest	2-3	12,126	35	9	1	2	—	4	5	6	7	8	9	10	—	—	—	—	—	—	—	—	—	—
7 Watford (FAC3)	2-2	15,007	—	—	1	2	—	4	5	6	7	8	9	10	—	—	—	—	—	—	—	—	—	—
10 Watford (FAC3R)	3-4	20,586	—	—	1	2	—	4	5	6	7	8	9	10	—	—	—	—	—	—	—	—	—	—
14 Arsenal	*1-2	16,320	35	10	1	2	—	4	5	6	7	8	9	11	—	—	—	—	—	—	—	—	—	—
21 Wolverhampton W	2-1	11,594	38	8	1	2	—	4	5	6	7	8	9	11	—	—	—	—	—	—	—	—	—	—
<b>February</b>																								
4 Aston Villa	0-0	18,656	39	7	1	2	—	4	5	6	7	8	9	11	—	—	—	—	—	—	—	—	—	—
12 Manchester United																								
18 Liverpool																								
25 Southampton																								
<b>March</b>																								
3 Queens Park Rangers																								
10 Birmingham City																								
13 Ipswich Town																								
17 Norwich City																								
24 Leicester City																								
31 Ipswich Town																								
<b>April</b>																								
7 Everton																								
14 Tottenham Hotspur																								
17 West Ham United																								
21 Notts County																								
28 Watford																								
<b>May</b>																								
5 Coventry City																								
7 Stoke City																								
12 West Bromwich Albion																								
19 FA Cup Final																								

<b>Luton Town</b> Shirt: White Knicker: Black Stockings: Black with White Tops	<b>Swindon</b> Goal	<b>Hawkes</b> Left Back	<b>Pearce</b> Left Half	<b>McLeod</b> Outside Left
<b>Dunne</b> Right Back	<b>Owen</b> Centre	<b>Groves</b> Inside Left	<b>McLeod</b> Outside Left	
<b>Morton</b> Right Half	<b>Brown</b> Centre	<b>Groves</b> Inside Left	<b>McLeod</b> Outside Left	
<b>Adam</b> Outside Right	<b>Turner</b> Inside Right	<b>Groves</b> Inside Left	<b>McLeod</b> Outside Left	
<b>Referee:</b> Mr. K. G. ASTON (Ilford)	<b>NEWS WORLD</b>	<b>Linesmen:</b> Mr. C. Coppock (Wembley)	<b>Orange Flag:</b> Mr. R. H. V. Harding (Ilford)	
<b>Scannell</b> Outside Left	<b>Violet</b> Inside Left	<b>Taylor</b> Centre	<b>Charlton</b> Inside Right	<b>Morgans</b> Outside Right
<b>Edwards</b> Left Half	<b>Jones</b> Centre Half	<b>Colman</b> Right Half	<b>Folkes</b> Right Back	
<b>Manchester United</b> Shirt: Red (white pinstripes) Knicker: White Stockings: Black, Red and White Tops	<b>Gregg</b> Goal	<b>Kick-off 2.15 p.m.</b>		
Spectators are asked NOT TO CROSS THE PLAYING FIELD after the match				

This afternoon's game takes us back to a meeting between the two clubs several years ago. The result was a 2-2 draw with Brown and Groves scoring for the Town and Scanlon and Taylor for United. The team changes involved Eddie Marsh playing in goal, Terry Kelly at centre-half, John Groves at inside-right and Mike Cullen at inside-left. Berry filled the outside-right position for United.

## FOOTBALL COMBINATION FIXTURES 1983-84

Date	Opposition	F	A
Aug. 27	Chelsea	1	1
Sept. 7	Leicester City	1	0
Sept. 10	Ipswich Town	0	0
Sept. 14	Reading	4	1
Sept. 17	Arsenal	1	2
Sept. 20	Millwall	4	0
Sept. 24	Swansea City	3	1
Oct. 3	Charlton Athletic (7.30)	1	1
Oct. 8	Bristol Rovers	2	1
Oct. 11	Norwich City	0	0
Oct. 18	Crystal Palace	0	0
Oct. 25	Southampton	3	1
Nov. 5	Brighton and Hove A.	4	0
Nov. 9	Millwall	2	1
Nov. 23	Oxford United	0	1
Nov. 26	Swindon Town	4	1
Dec. 3	Tottenham Hotspur	2	1
Dec. 10	Watford	3	0
Dec. 17	West Ham United	2	1
Jan. 3	Queens Park Rangers	1	1
Jan. 17	Chelsea	0	1
Jan. 21	Reading	3	1
Jan. 28	Swansea City	1	2
Feb. 4	Arsenal		
Feb. 14	Charlton Athletic		
Feb. 25	Queens Park Rangers		
Feb. 28	Southampton		
Mar. 6	Brighton & Hove A.		
Mar. 10	Fulham		
Mar. 13	Watford		
Mar. 17	West Ham United		
Mar. 20	Fulham		
Mar. 24	Norwich City		
Mar. 27	Crystal Palace		
Mar. 31	Leicester City		
April 2	Bristol Rovers		
April 7	Ipswich Town		
April 10	Birmingham City		
April 14	Oxford United		
May 5	Swindon Town		
May 9	Birmingham City		
May 12	Tottenham Hotspur		
TBA	Oxford United (A)		

## SOUTH EAST COUNTIES LEAGUE FIXTURES 1983-84

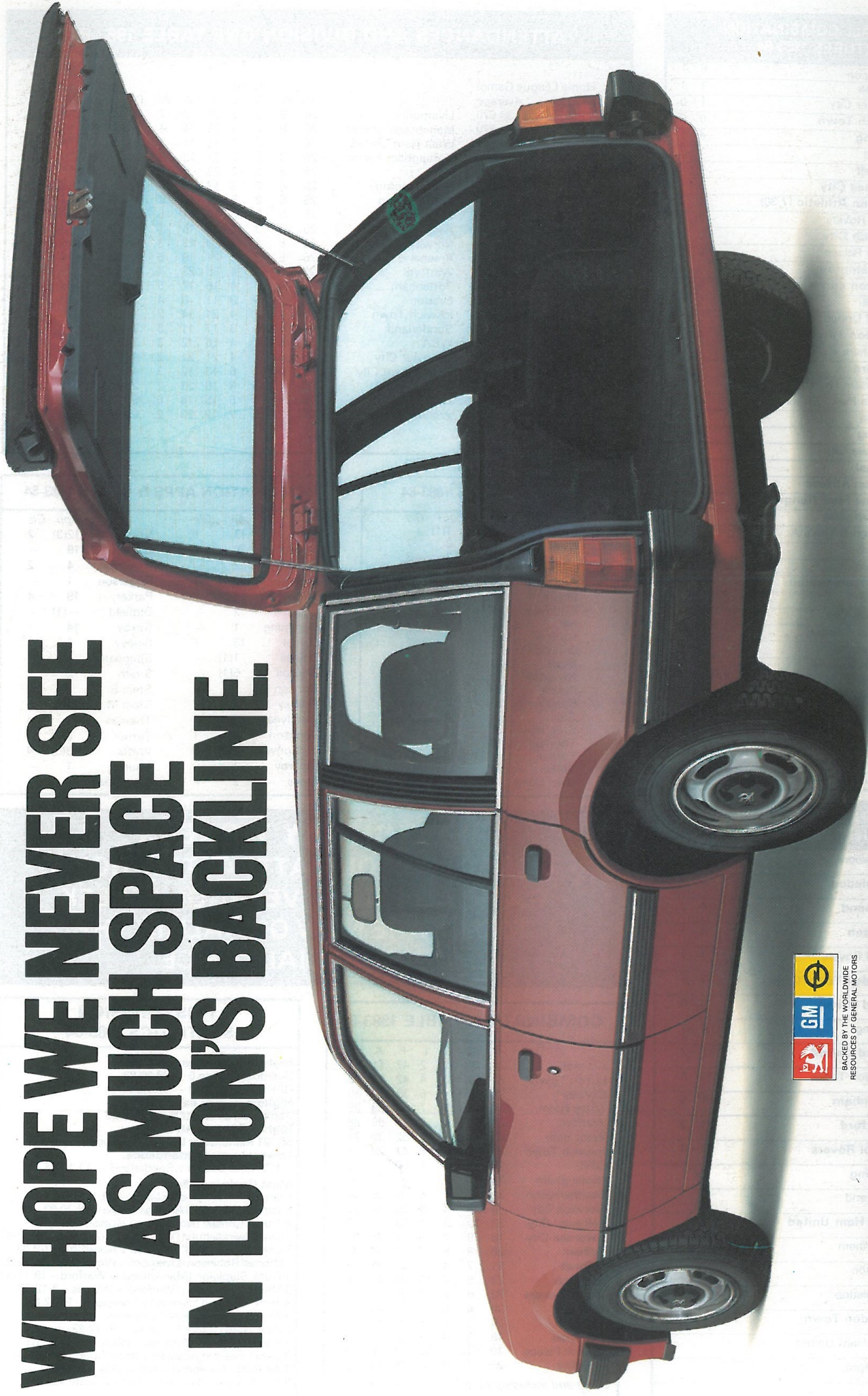
Date	Opposition	F	A
Sept. 3	Wimbledon	3	2
Sept. 9	Southend	4	2
Sept. 17	Brighton	4	1
Sept. 24	Bristol Rovers	1	4
Oct. 1	Swindon Town (Cup)	1	5
Oct. 15	Oxford United	0	0
Oct. 22	Reading	0	3
Oct. 29	Oxford United	1	2
Nov. 5	Swindon Town	0	5
Nov. 19	Tottenham	1	1
Dec. 3	Brentford	1	3
Dec. 17	Bristol Rovers	3	0
Jan. 21	Reading	P	
Feb. 4	Southend		
Feb. 11	West Ham United		
Feb. 18	Tottenham		
Feb. 25	Brighton		
Mar. 10	Wimbledon		
Mar. 24	Swindon Town		
Mar. 31	West Ham United		
April 28	Brentford		

## ATTENDANCES AND DIVISION ONE TABLE 1983-84

Home League Games			Home							Away						
Highest	Average		P	W	D	L	F	A	W	D	L	F	A	Pts		
45,122	30,070	Liverpool	26	8	3	2	26	7	7	4	2	17	12	52		
56,121	42,670	Manchester United	26	9	2	3	29	14	4	7	1	17	15	48		
32,555	22,653	West Ham United	26	9	2	2	30	11	5	3	5	12	14	47		
29,692	18,245	Nottingham Forest	25	9	3	2	31	13	5	1	5	16	18	46		
27,140	15,550	QPR	25	8	3	2	23	8	5	1	6	20	15	43		
26,750	17,811	Southampton	25	8	2	2	17	9	4	4	5	12	13	42		
17,275	12,791	Luton Town	25	5	2	5	24	19	7	1	5	17	17	39		
21,453	13,789	Coventry City	25	5	3	3	16	11	5	5	4	18	20	38		
39,318	22,676	Aston Villa	25	9	3	2	22	15	1	4	6	15	23	37		
25,679	17,631	Norwich City	26	6	4	3	20	13	3	5	5	10	16	36		
42,704	28,120	Arsenal	26	5	3	6	21	19	5	1	6	20	18	34		
21,056	15,426	Watford	26	6	3	4	26	22	4	1	8	17	23	34		
45,032	33,948	Tottenham	25	4	3	4	16	17	5	4	5	24	25	34		
22,658	16,350	Everton	25	5	5	3	11	8	4	2	6	9	18	34		
26,185	17,597	Ipswich Town	25	7	2	4	24	14	2	3	7	12	20	32		
26,826	17,280	Sunderland	24	5	5	3	17	11	3	2	6	8	21	31		
25,139	15,832	WBA	25	6	1	4	16	12	3	2	9	13	27	30		
24,409	14,650	Leicester City	26	5	4	4	21	21	2	4	7	19	25	30		
19,957	13,817	Birmingham City	26	5	1	6	13	12	3	4	7	14	21	29		
11,031	9,010	Notts County	25	3	3	5	19	23	2	2	10	14	29	20		
23,704	13,459	Stoke City	26	4	3	5	15	18	0	5	9	7	29	20		
26,249	13,356	Wolverhampton	25	2	5	7	12	23	2	0	9	9	30	17		



**WE HOPE WE NEVER SEE  
AS MUCH SPACE  
IN LUTON'S BACKLINE.**



BACKED BY THE WORLDWIDE  
RESOURCES OF GENERAL MOTORS

**VAUXHALL CAVALIER ESTATE.**

*Better. By Design.*