

Welcome to

# Luton Town

LUTON TOWN

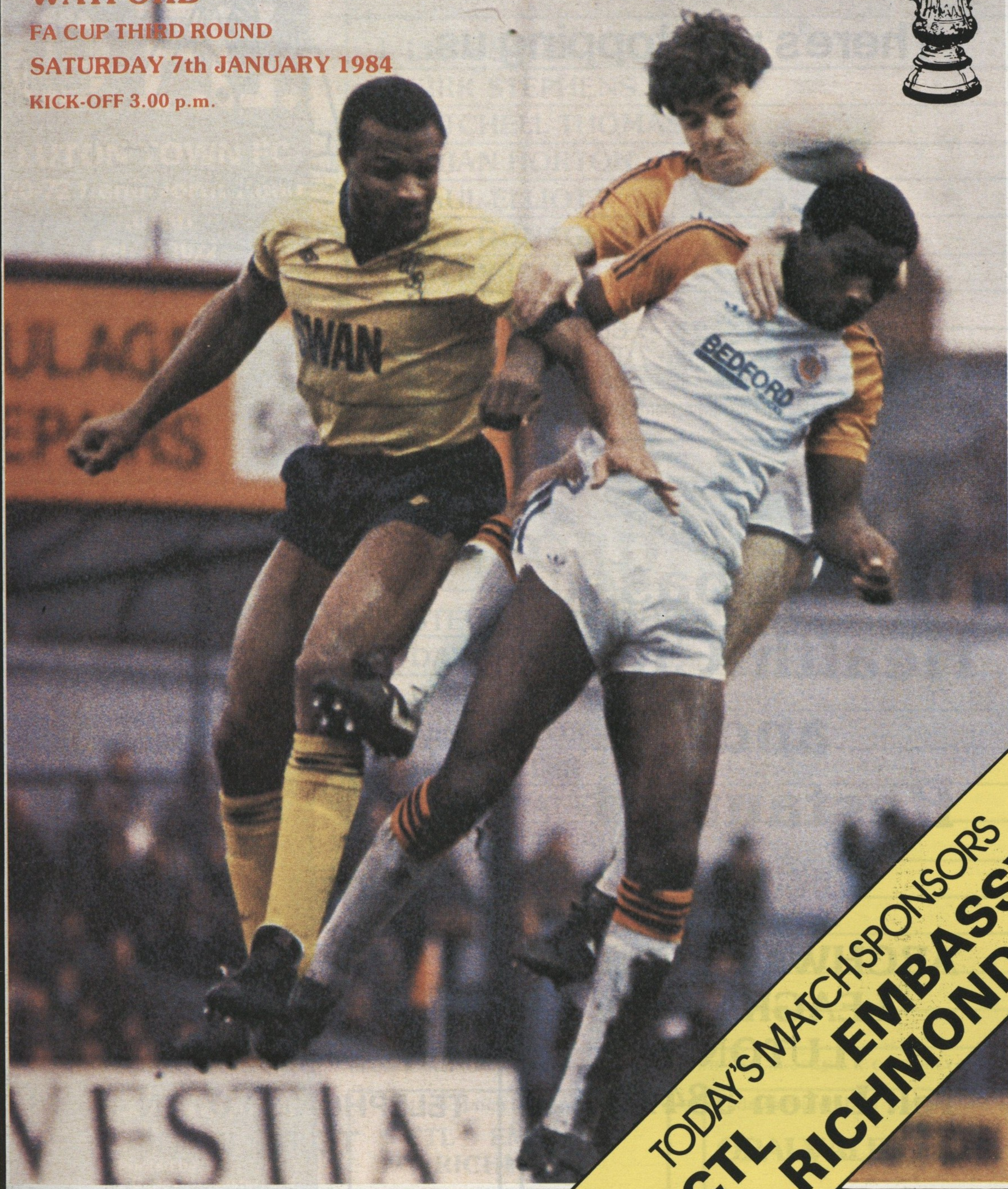
v

WATFORD

FA CUP THIRD ROUND

SATURDAY 7th JANUARY 1984

KICK-OFF 3.00 p.m.



TODAY'S MATCH SPONSORS  
**CTL** **EMBASSY**  
**RICHMOND**

Official Matchday Magazine

Price 50p





There's no stopping us.

**CTL** Computer  
Technology  
Limited

Hempstead House, 2 Selden Hill, Hemel Hempstead, Herts. HP2 4TN. Tel: (0442) 3288



## The Embassy Health Club and Restaurant

ARCHWAY ROAD  
LEAGRAVE  
LUTON

Tel: Luton 584944

## RICHMOND

**PRECISION  
ENGINEERING**

A complete engineering  
service to industry

**AIRPORT APPROACH  
ROAD  
LUTON AIRPORT  
LUTON**

TELEPHONE: LUTON 416969  
TELEX: 825413

# Luton Town F.C.

**LUTON TOWN FC**  
70-72 Kenilworth Road  
Luton  
Tel: 411622

*Chairman:* Denis Mortimer

*Directors:*

R. L. Banks, D. J. Evans, E. S. Pearson  
R. J. Smith, J. R. Smith (Executive)  
D. J. Pleat (Team Manager)

*President:* T. Hodgson

*Vice Presidents:*

J. A. C. Bain (Deputy President)  
Sir Reginald Pearson OBE,  
A. G. Berry, J. B. Brent, C. Bygrave,  
B. Cole, B. England, N. S. Fookes,  
C. Holloway, I. E. Holmes,  
C. J. Evans, R. Larkinson,  
L. Leppington, Eric Morcambe OBE,  
R. Safranek, E. Waller, R. Unwin

*Administration:*

*General Secretary:* Graham MacKrell

*Club Secretary:* John Wilkinson

*Commercial Manager:*

Bill Tomlins

*Projects and Advertising Executive:*

Mike Beevor

*Catering Manager:* Clive Hustwitt

*Development Executive:*

John Gornall

*Auditors:*

Arthur Young, McClelland,  
Moore & Co.

*Photographer:* Gareth Owen

*Playing:*

*Coaches:*

David Coates, John Moore and  
Trevor Hartley

*Physiotherapist:* John Sheridan

*Doctor:* W. A. C. Berry MBBS

All ticket enquiries please contact  
Luton 30748. All matchday information  
is obtainable from our 24-hour  
answering service — Telephone Luton  
33010

Printed by:

Hemmings & Capey (Leicester) Ltd

# Team Check

**LUTON TOWN**



- 1 LES SEALEY
- 2 KIRK STEPHENS
- 3 MITCHELL THOMAS
- 4 BRIAN HORTON
- 5 PAUL ELLIOTT
- 6 MAL DONAGHY
- 7 RICKY HILL
- 8 BRIAN STEIN
- 9 PAUL WALSH
- 10 TREVOR AYLOTT
- 11 RAY DANIEL
- 12

## WATFORD



- 1 STEVE SHERWOOD
- 2 DAVE BARDSLEY
- 3 WILF ROSTRON
- 4 LES TAYLOR
- 5 STEVE SIMS
- 6 PAUL FRANKLIN
- 7 NIGEL CALLAGHAN
- 8 MAURICE JOHNSTON
- 9 GEORGE RILEY
- 10 KENNY JACKETT
- 11 JOHN BARNES
- 12

Referee: A. GUNN (Burgess Hill, Sussex) Linesmen: H. R. HALL (Red Flag) B. K. COULDREY (Yellow Flag)

Today's Match is sponsored by:

**CTL EMBASSY  
RICHMOND**

Today's Match Ball is sponsored by:

**OPALVALE GROUP**



**BEDFORD BUSINESS MEANS:**

***You need it,  
we've  
got it.***



**A vehicle for every business.**

You'll find Bedfords working in just about every business you can think of. That's because we offer a vast range of vehicles from light vans to heavy-duty trucks to keep the wheels of British industry turning. And, if you came to the match by coach, the chances are that also was a Bedford.



**A dealer round every corner.**

You'll find a Bedford dealer is never far away. He'll help you choose the vehicles that best suit your business needs; he'll advise you on our special leasing, insurance and warranty schemes; and he'll maintain your Bedfords in peak condition throughout their long working life.

Because, giving our customers what they need, when they need it, is what Bedford business means.

**BEDFORD  
MEANS  
BUSINESS**



# MY VIEW

I thought the Stoke City director was joking when he popped his head around the boardroom door and told me we had drawn Watford in the FA Cup.

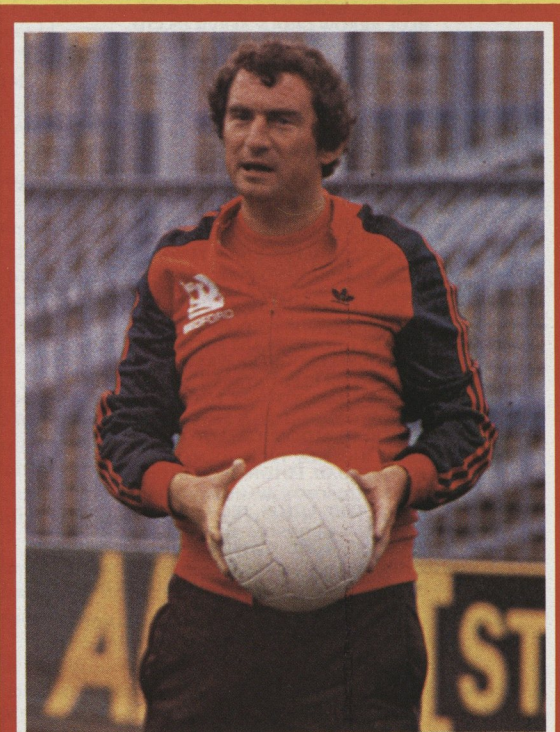
The previous day, Stoke had sacked their manager after a couple of players had asked for a transfer. So if one would believe that, one had to believe the Cup draw.

I have only one hope today. Naturally, both sides want to win. Four years ago, this game would not have merited the tag 'glamour tie'. Much has happened since to give the supporters of both sides' teams and clubs something to be proud of, and we both want to remain proud of our supporters.

The Cup retains that magic feeling for everyone concerned. We all dream of a Wembley Cup Final and it would be wonderful to achieve it. Our Cup record is none to convincing and critics try to explore the reasons why we fail to come up to expectations. Defeats by Millwall, York City and Gillingham in Cup competitions have been hard to swallow, but this is the very heart of the game.

I am looking forward today to some interesting personal duels. Since our League fixture, Watford have the versatile Ken Jackett fit and their Scottish signing, Maurice Johnston, appears to be settling in. We all know the danger from the powerfully clever John Barnes, and the hard working Nigel Callaghan. Since that Luton victory, we have introduced another couple of youngsters. I hope that our recent 3-0 reserve victory is an omen for today.

Only recently, Watford were voted FLESA/Fiat Team of the Year, an award which relates to club's achievement on the pitch in relation to resources etc. Second were Shrewsbury; third Liverpool and fourth Hull City. Other candidates for the award included Manchester United, Wimbledon and Luton. The idea of the awards is for the Fiat sponsor money to be transferred to NABC all over the country. The clubs get the publicity, and the youth clubs the money. Well done Fiat for a first-class scheme.



One thing I am sure of today. Whatever the result, I will retain my respect and good wishes to Watford. We have been motivated by each other, and learned to live with each other in the pursuit of playing winning and entertaining football.

Enjoy the game. Don't be abusive, or misbehave. Let the tension begin.

See you soon.



# MEMBERS OF THE KENILWORTH SUITE

MR D. SAVAGE  
BEDFORD COMMERCIAL VEHICLES, LUTON

MR A. G. BERRY FCCA, CHAIRMAN  
BLUE ARROW GROUP SERVICES LTD  
5 LONDON ROAD, ST ALBANS, HERTS

BRENGREEN HOLDINGS PLC  
61 CHEAPSIDE, LONDON EC2V 6AX

GARY CHAMBERLAIN  
GARY CHAMBERLAIN WINDOW FASHIONS, UNIT 7,  
BEAUMONT WORKS, SUTTON ROAD, ST. ALBANS, HERTS.  
TEL: ST. ALBANS 62577

MR P. COOPER  
CLEANDUSTRIAL SERVICES LTD, PALMERS GREEN, LONDON N13  
TEL: 01-882 4626

FILMERGRAPHIC ASSOCIATES LTD  
PRINTERS AND PHOTOTYPESETTERS  
BAINSON HOUSE, ALTON ROAD, LUTON, BEDS.  
TEL: LUTON 36407

FINE STAMPS LTD  
BILTON WAY, LUTON, BEDS. TEL: LUTON 36761

MR N. S. FOOKES  
N. S. FOOKES GROUP, (PLANT FACILITIES) LTD  
PROGRESS HOUSE, PROGRESS WAY, LUTON BEDS.

MR E. FOUNTAIN  
VAUXHALL MOTORS, LUTON

BRIAN E. HANDSCOMBE (LIFE & PENSIONS BROKER)  
48 ALMA STREET, LUTON. TEL: LUTON 425921/4

MR I. E. HOLMES, IVOR HOLMES LTD  
82-88 MARSH ROAD, LUTON, TEL: LUTON 56622

MR C. J. HUDSON, E. W. HOLDINGS LTD  
6 UNION STREET, LUTON, TEL: LUTON 30511

RICHARD C. LARKINSON, (BALDOCK) LTD  
TWENTY PENCE ROAD, COTTENHAM, CAMBS.

MARK JAMES (SALVAGE) LTD  
GRANGE HOUSE, 10 COMPTON AVENUE, LUTON BEDS.  
TEL: LUTON 503777

MARSHALLS OF LUTON GROUP, MARSHALL CHAMBERS  
MILL STREET, LUTON LU1 2NN, TEL: 429933

IAN C. CHEVERALLS  
OPALVALE GROUP  
189 WALLER AVENUE, LUTON, BEDS. TEL: LUTON 56122

MR & MRS S. J. PEARSON  
55 LUTON ROAD, WILSTEAD, BEDFORDSHIRE JK45 3ET

DR & MRS G. L. PLESTER  
9 BRIARS CLOSE, NUNEATON, WARWICKSHIRE

NIGEL TERRY, PRIORY FARM FOODS  
81-83 PETERS STREET, BEDFORD, TEL: 0234 60372

MR A. HUNTER  
RAVENMERE LTD, ALLRIC HOUSE, 21 FARLEY HILL, LUTON  
TEL: LUTON 32640

RICHARDSON & BOTTOMS LTD  
105-107 BISCOT ROAD, LUTON, BEDS. TEL: LUTON 35421/5

RICHMOND ELECTRONICS  
(MARKYATE) LTD  
HICKS ROAD, MARKYATE, HERTS. TEL: LUTON 840761

ROBINSON METAL (LUTON) LTD  
CALEB CLOSE, 464 DUNSTABLE ROAD, LUTON, BEDS.  
TEL: LUTON 53866

MR R. S. SAFRANEK  
NEAHURST LTD  
LONDON ROAD, LOWER STONDON, HITCHIN  
TEL: HITCHIN 94-813545

MR. W. POWERS  
SHAW & KILBURN OF LUTON  
540-550 DUNSTABLE ROAD, LUTON, BEDS

WEBBEX LTD  
THISTLE ROAD, WINDMILL ROAD TRADING ESTATE, LUTON, BEDS.  
TEL: 457222

MR R. W. UNWIN  
R. W. UNWIN & CO. LTD  
PROSPECT PLACE, WELWYN HERTS. TEL: WELWYN 6441

WALLSPAN BEDROOMS  
INDUSTRIAL ESTATE, MAULDEN ROAD, FLITWICK, BEDS.  
TEL: FLITWICK 713621

MR & MRS P. LAYCOCK  
11 THE AVENUE, FLITWICK, BEDS.

# FA Cup Scene . . . FA Cup Scene . . .

## ANOTHER CUP MINNOW FOR MANCHESTER UNITED By Tony Pullein

Manchester United manager Ron Atkinson received the third round FA Cup draw with mixed feelings. The trophy holders travelled to Bournemouth and it's the fourth time this season the Reds have been drawn against Third Division opposition in one of the Cups!

Over the years United have not often slipped against smaller clubs and they disposed of Port Vale and Colchester quite comfortably in the first two stages of this season's Milk Cup. Yet, after two tough draws with Oxford, they were eventually beaten 2-1 after extra-time.

The draw provided brief excitement for the non-league heroes of Windsor. Windsor had never even survived as far as the second round until this season but then held Bournemouth to a 0-0 draw.

Manager Geoff Campbell could hardly believe his ears. 'I flew through the air,' he said. 'It's the only one we really wanted. Of course, we have a very tough game with Bournemouth but even if we don't make it, we shall always have the memory of being paired with Manchester United, the Cup holders and one of the greatest clubs in the world.'

Bournemouth face United at Dean Court for the second successive season. Last season they held the Reds to a 2-2 draw in the second leg of the Milk Cup round two, drawing a crowd of 13,226. They had already been beaten at Old Trafford so they didn't spoil United's progress to Wembley in that competition.

That was a game Ray Wilkins will want to forget. He fractured a cheekbone which kept him out for many weeks and cost him the captaincy of United and England.

### REVIVED MEMORIES

The draw revived memories of Bournemouth's greatest season of all. After beating the second and third placed clubs in the First Division in 1957, they were drawn at home to the leaders Manchester United in the sixth round. The attendance (28,799) remains a ground record unlikely to be challenged and by half-time they led 1-0. But United pulled back to win 2-1.

● The FA Cup is just about the only trophy Liverpool have failed to win over the past nine years and they start with an awkward-looking home tie with a Newcastle side containing former Liverpool man Kevin Keegan and Terry McDermott.

Though Liverpool are 6-1 favourites to win the FA Cup, manager Joe Fagan is feeling a little nervous. Coventry City thrashed his side 4-0 to prove they are not an indestructible machine and, with a long list of recent FA Cup disappointments behind them, Liverpool could go at the first hurdle.

Keegan, a player who relishes the big challenge and the big occasion, was elated when he heard the draw. 'What a game for us!' he beamed. 'And what a great chance for us to erase the memory of our Milk Cup defeat by Oxford United.'

'If we are on form, and can play like we did when we beat Manchester City 5-0 a few weeks ago, we can win at Anfield.'

### ELIMINATED

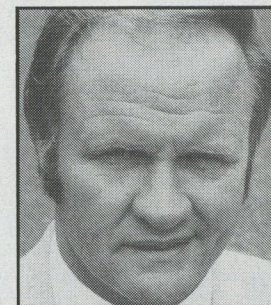
Last season, of course, Liverpool were beaten at home by Brighton in the fifth round. Brighton were the side that had earlier eliminated Newcastle and went on to Wembley.

The Sussex club has since been relegated and Jimmy Melia, the manager who inspired their Cup run, is now in Portugal. But Brighton seem to have a virtual bye in round three. They are at home to trouble-torn Swansea City who have been forced to sell virtually their complete team to raise cash and cut weekly expenditure.

At the time of the draw Swansea were bottom of the Second Division, looking back on a bleak away record — the Swans had registered just one away win in 38 attempts. That was in Malta last season when they won 5-0 against Sliema Wanderers to complete a 17-0 aggregate win in the European Cup-Winners' Cup.

● Another club struggling at the foot of Division Two, Fulham, are at least assured of another money-spinner. The Cottagers took Liverpool to three games in the third round of the Milk Cup and today have a home tie with their all-star London neighbours Tottenham.

● Southampton's main chance of winning a trophy had to be in one of the Cups but they went out of the Milk Cup at Third Division Rotherham United and face a trip



RON ATKINSON



KEVIN KEEGAN

to Nottingham Forest in the FA Cup. The Saints were without England goalkeeper Peter Shilton when they were beaten at Rotherham but he hoped to be fully fit to face his former club at the City Ground.

● Arsenal could have hoped for a better draw than a long trip to Second Division Middlesbrough. It's the sort of tie they could well lose and defeat at Ayresome Park would come as another blow to morale.

### IMPRESSIVE RECORD

Yet, Arsenal have such an impressive recent record in the FA Cup — they have appeared in five of the last 13 finals — that this challenge could prove the turning point in their fortunes.

● Scunthorpe manager Allan Clarke makes the nostalgic journey back to Leeds where he was once such a big star as a player and, later, manager. Ian Botham, the former England cricket captain, made his FA Cup debut against Bury in the last round but he will not be playing at Elland Road. He is on cricketing business in warmer climates.

● Two former finalists, now at opposite ends of the soccer spectrum, meet at Meadow Lane. Notts County, FA Cup winners in 1894 and runners-up in 1891, are now a First Division club whilst their visitors Bristol City — who lost to Manchester United in the 1909 final — are currently languishing in Division Four, only three years after relinquishing their First Division status.

City came back from behind with two goals in the closing 12 minutes to beat local rivals Bristol Rovers 2-1 at Eastville, and inflict Rovers' first home defeat of the season.

● With Spurs and Manchester United having appeared in two Wembley finals in the same season over the past couple of years — each being beaten by Liverpool in the Milk Cup Final — speculation is raised about the prospect of someone winning both Cups in one season.

Two clubs who reckon they are in with a chance are Aston Villa and Norwich — but they could both spoil each other's chances. Coincidentally, Aston Villa are at home to Norwich in the third round of the FA Cup, then, next week meet Norwich at Carrow Road in the fifth round of the Milk Cup.

## UNRIVALLED FOOTBALL COVERAGE

EXCLUSIVE  
COLUMN  
by  
DAVID  
PLEAT

HATTERS  
REPORTS  
by  
BRIAN  
SWAIN

LOCAL  
LEAGUES  
by  
ERIC  
NORRIS

LUTON TOWN PICTURES BY MARK RICHARDS

IN THE **LUTON NEWS** THURSDAY 12p

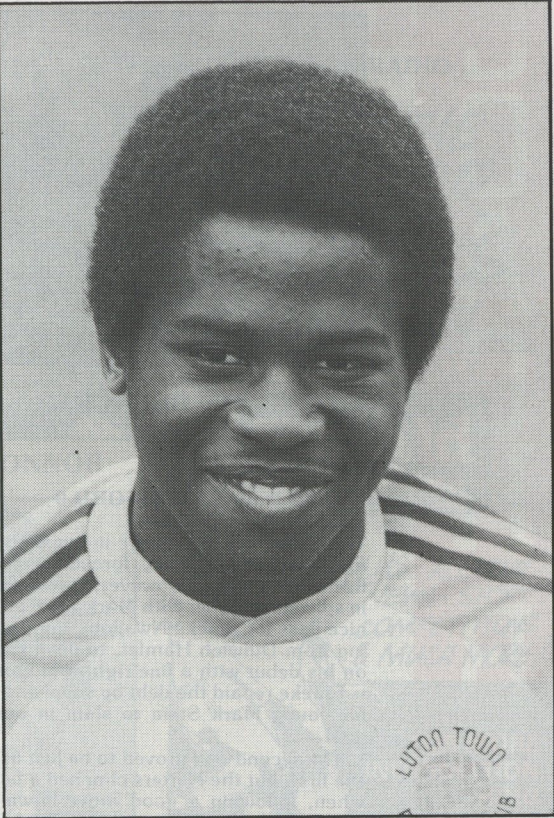




# RAY DANIEL – CAREER RECORD

FOOTBALL LEAGUE		
	82-83	Total
Manchester Utd	1	1
Norwich	s	0 + 1s
Sunderland	s	0 + 1s
	1 + 2s	1 + 2s
	83-84	Total
Stoke	1	1
West Brom	1	1
Notts County	1	1
West Ham	1	1
	4	4
MILK CUP		
	83-84	Total
Rotherham	1	1
	1	1

Ray Daniel has proved what a valuable asset our Youth policy is to the club by making quite an impact in the first team recently. After playing a full game against Manchester United towards the end of last season, he came into the team again for our Milk Cup-tie at Rotherham in October. But he had to wait another six matches for his next chance — and grabbed his opportunity with both feet by scoring one of the goals in our 4-2 victory at Stoke last month. He followed that with another goal against Notts County on Boxing Day — a feat which delighted manager David Pleat. Keep your eyes on Ray — he could have a bright future with us.



# Town Focus

**FORUM**  
THEATRE  
HATFIELD.  
ADVANCE  
BOX  
OFFICE  
HATFIELD  
71217

**REACH FOR THE STARS!**  
AND LET US GET YOUR WINTER  
ENTERTAINMENT OFF TO A FLYING START!

January	26	Petula Clark	March	1	John Mann
	28	Royal Philharmonic Orchestra			Eminent Organ Show
		'Evening of Popular Classics'		9	Steeleye Span
February	4	Lenny Henry & Co		11	Chris Barber's Jazz & Blues Band
	18	John Miles plus Support			Guest: Otilie Patterson
	19	Mezzoforte			





**TIM BREACKER**



**JAKE FINDLAY**

## LUTON TOWN 3 WATFORD 0 Football Combination

The early pace was hectic in our derby match, and Watford's Cassidy forced an early save from Jake Findlay. However, Luton struck back in splendid manner with Mark Stein providing a nice pass for Emeke Nwajiobi, our recent signing from Dulwich Hamlet, to open the scoring on his debut with a fine right foot cross shot.

Emeke repaid the debt by supplying the pass for young Mark Stein to slam in our second goal.

The second half proved to be just as lively as the first, but the Hatters clinched a fine victory when, following a good move down the left-wing, Mark North crossed accurately for Gary Parker to head powerfully past Watford keeper Eric Steele.

Credit must be given to both sides for providing such hard fought entertainment on a wet and dreary day.

## WEST HAM UNITED 1 LUTON TOWN 2 Football Combination

LUTON: Findlay, Johnson, Turner, Breacker, North S., Goodyear, Parker, Nwajiobi, North M., Watts. Sub: Stein M.

On a sticky pitch, both sides struggled to gain superiority in an eventful first half. The Hammers had one shot superbly saved by Jake Findlay, but the Hatters countered when Mark Stein latched on to a fine ball by Tim Breacker to hammer in a left foot shot just before half-time.

West Ham came out strongly in the second half and equalised through Paul Goddard, but the Town hit back through a shot by Frank Bunn that took a slight deflection.

Luton could have gone further ahead with shots from Mark Stein but lacked power when in good positions. A late surge by West Ham for the equaliser was denied by some excellent defending in the last few minutes of the game. This game was our fourth successive victory — a nice present for Christmas.

## LUTON TOWN 1 BRISTOL ROVERS 3 South East Counties

LUTON: Dunn, Davies, Burke, Driscoll, Devine, Ager, McEvoy, Ellisdon, Simpson, Oldfield, Reynolds. Subs: Doughty, Cook.

We were looking for a good result and performance before our long journey to Plymouth for the next round of the FA Youth Cup. Unfortunately we played as if we had our minds on the Cup-tie and were punished severely by one of the Bristol forwards who grabbed a hat-trick and we went in at half-time losing 3-0.

In the second half we picked ourselves up and put a lot more into the game and soon pulled a goal back. Our outside left, Reynolds, collected a good pass and went on to hit a good cross shot low into the far corner of the net.

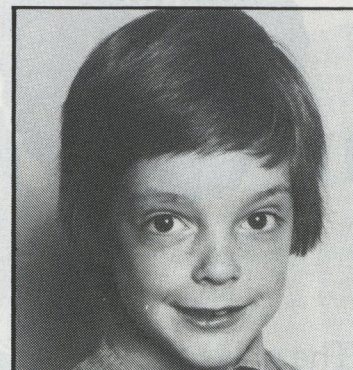
At this stage we thought we had a chance of pulling a result from the game but Rovers defence worked extremely hard and although we managed to penetrate a few times, we did not take our chances.

As the game wore on we looked less likely to score and the spirit and belief began to go out of our play. We have to learn to compete from the kick-off and not to wait until we are behind before we play as we should from the start because, at youth level, the first goal is the most important to the spirit of the team.

# junior hatters

JUNIOR HATTERS SPONSORED BY THE HERALD AND CHILTERN RADIO

## THE MASCOT



**DAVID HARRIS**

We welcome our mascot and escorts to this afternoon's game and sincerely hope they enjoy their day with us.

If you would like further details of how to join — and the part president Ricky Hill plays in the club — call in at the commercial office.

## MASCOT

David Harris of Shillington is nine and attends Robert Bloomfield Middle School. He plays football for his school team and his interests are collecting stamps, cigarette cards, football, cubs and reading.

## ESCORTS

Andrew Connor of Lewsey Farm, Luton, is 14 and a pupil at Cardinal Newman School. Andrew is no stranger to Kenilworth Road as he has just signed schoolboy forms for the club. He currently plays football for Cardinal Newman School, Lewsey Centre, Luton and Bedfordshire schoolboys, a Chiltern Youth League team and our 14-year-olds team.

Bradley Leighton Dye of Dunstable is 10 and attends Millvale Middle School, Dunstable. He plays football for 4th Dunstable Cubs. His interests are football, swimming, playing the violin and pottery.

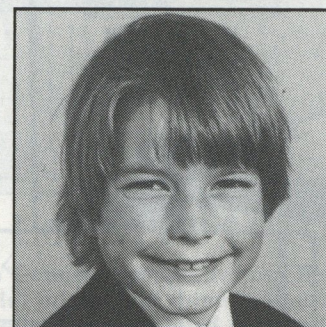
Bryan Taylor of Luton is 13 and a pupil at Challney High School. He plays football for Lewsey Centre and his school team. His interests are football, subbuteo and BMX riding.

Ian Dickinson of Dunstable is nine and attends Ashton Middle School, his interests are football, table tennis, chess, boys brigade and playing the piano and trumpet.

## THE ESCORTS



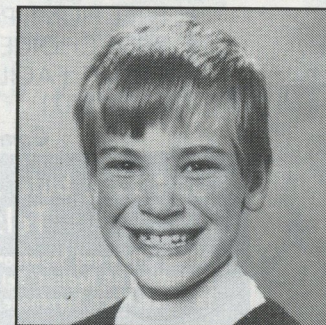
**ANDREW CONNOR**



**BRADLEY DYE**



**BRYAN TAYLOR**



**IAN DICKINSON**

READ THE  
JUNIOR  
HATTERS  
COLUMN

IN YOUR WEEKLY

**Herald**  
just a friend dropping in



FOR MORE  
INFORMATION  
RING  
LUTON 415061

TUNE IN TO



**Chiltern  
Radio**

EVERY SATURDAY  
MORNING

## WAS YOURS AN INSIDE JOB?

GLAZING REPAIRS & GLASS SUPPLIES  
PATIO DOOR & WINDOW INSTALLATIONS  
DOUBLE GLAZING (SECONDARY AND SEALED UNITS)  
INTERIOR AND EXTERIOR DECORATORS

For Domestic and Commercial enquiries contact Luton 53025/597505

**sapsworth**  
GLAZING & DECORATING  
J. Sapsworth Limited  
92 Marsh Road, Luton, Bedfordshire LU3 2NL  
Telephone: Luton (0582) 53025/597505



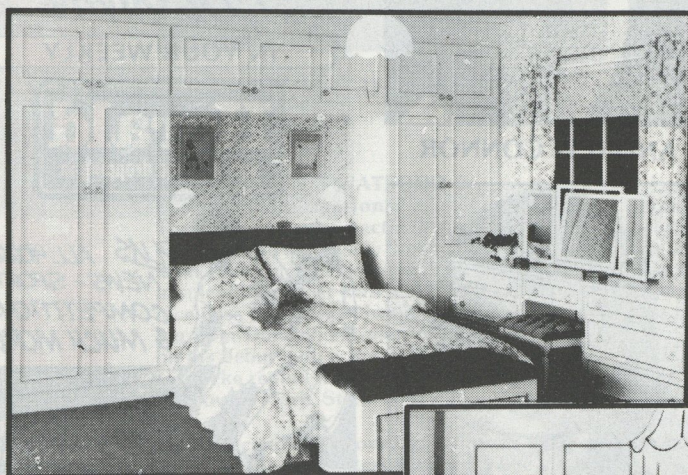
Be in the Top League this season with

# LUTON TOWN

and Wallspan Bedrooms



The only place to go for real fitted Bedroom Furniture



You can see the full range of Wallspan luxury fitted bedrooms on display at your local Wallspan Showroom. So don't take our word call in and check the quality and price for yourself. We have been designing and manufacturing furniture for over 20 years. After all, when you are spending between £400 and £1,400 we think you should see what you are getting before you buy and not place an order from a pretty picture or model.



You know the score with Wallspan

- ★ FREE INSTALLATION
- ★ FREE HOME PLANNING
- ★ WIDE CHOICE OF FINISHES
- ★ CREDIT FACILITIES (WRITTEN DETAILS ON REQUEST)

Come and see us today

Unit 174, Bute St, Arndale Centre, Luton.  
Tel: Luton 23015

Head Office and Showroom, Maulden Rd, Flitwick, Beds. Tel: 716161  
59 Midland Rd, Bedford. Tel: 211327  
18 Market Place, Stevenage, Herts. Tel: 724853

## Wallspan Bedrooms

SHOWROOMS THROUGHOUT THE UK

Action



## NOTTS COUNTY 0 LUTON TOWN 3

Three quality goals left Notts County reeling after our Boxing Day visit. 'Thanks very much', says Ray Daniel in the 71st minute after scoring our second. Trevor Aylott escapes the keeper's fists to head a splendid first goal after only 18 minutes.





# READERS LETTERS

Dear Mr Pleat, I'm writing from Sofia, Bulgaria. My name is Rumen Yankov. I'm 23-years-old. I like English football but I like most the teams renowned for their attacking flair and skill. We've read in some magazines about Luton's approach to the game and we've seen on TV a couple of your team's matches with Liverpool, Manchester United (FA Cup), Spurs, Southampton.

We were glad Luton managed to stay in the First Division and made a good start to the new season. We, the people who watch the game, all want to see entertainment on the field and want to see the players go to score more goals, without fear of conceding a couple at the other end.

Of course it's not easy to play like this today, when winning is most important. That's why we, a couple of fans from Bulgaria, want to congratulate you for insisting not only to win matches but win them in style. We all hope that Luton Town will continue to entertain for the benefit of their fans not only in England but here in Bulgaria too!

Would you be kind enough to help me find a Luton supporter who would be interested in exchanging all sorts of souvenirs with me?

I'm a CSKA supporter, and can also offer for exchange a Bulgarian national team shirt.

**Rumen Yankov**  
Bulgaria  
1510 Sofia  
Z.K. 'Hadgi Dimitar'  
UL. 'Mac Gahan'  
CL. 79 vh. G, et. II ap. 57

Dear Mr Pleat, In 1942 a small boy was taken to a football match at Kenilworth Road to watch Luton Town and it was the commencement of life-long support. Needless to say, I was that small boy and I like to think loyalties and enthusiastic support over a period of 41 years entitles me to write this letter.

Let me congratulate you on the superb job you have done and, indeed, in your attitude to play attractive and attacking football which has reaped considerable dividends in terms of successful results and increasing popularity of the club.

I am given to understand that the players hold you in the highest esteem and I would be surprised at anything less.

With best wishes for continued success.  
**Donald Blair**  
Mulberry Close  
North Drive  
London SW16

Dear Sir, My name is Peter Byh and I am 14 years old. I live in Sweden. I'm a Luton supporter. I want to become a journalist, guide, a writer and an interpreter. I have seen Luton play in Eskilstuna where they won by 1-0.

I interviewed some Luton players when they were in Eskilstuna. My friend corresponds with David Moss.

In Eskilstuna we have a supporters club and we collect Luton souvenirs.

Our dream is to come to Luton and watch you play.

**Peter Byh**  
Klarbarsvagen 16  
63353 Eskilstuna  
Sweden

Dear Sir, On behalf of my chairman and the members of the Boys' Club movement in Hertfordshire and Bedfordshire I would like to thank you and the Luton Football Club for their kind donation of an autographed football.

Our Charity Boxing Evening was a great success, raising over £2,000 for the development fund. The ball fetched £37 in the auction, in fact it topped the Spurs

shirt which brought in £25.

Please thank everybody at the club for doing such a good job for the youth in the area.

**Derick Balser**  
Hertfordshire Association  
of Boys' Clubs

Dear Sirs, May I say I would dearly love to see the club stay in Luton. May I also say that I have every sympathy with your predicament. My heart says 'stay in Luton', my head says 'go to Milton Keynes'.

I've supported Luton Town for over 30 years and I will remain a supporter whatever the outcome of the current problem.

**Andrew H. Hey**  
Shrewsbury  
Shropshire

Dear Sir, Whilst there are others who are far more informed than I who will put more detailed points to the Board, my point in writing to you is to bring to your notice the very real feeling that exists against the move to Milton Keynes.

Whilst I live and work in Bedford, I meet very many of those fans who have not missed a game for many years. To the individual there is a feeling of disbelief about the plans which have been published and already I have detected a sense of disillusionment amongst these loyal fans. I believe that the directors of the club are not aware of the strength of feeling against the move away from Luton.

Any assumption by the Board that existing fans will simply transfer their allegiance to Milton Keynes is fundamentally wrong. The heart of the club is in Luton and, whatever, plans are revealed to attract fans away, there it will stay. The move to Milton Keynes is the wrong one for Luton Town FC if a significant number of its fans do not follow. My contention is that if the club moves away from Luton its nucleus will not follow.

Yours sincerely,  
**C. W. Little**  
Bedford

# CLUB '82

**Mr P. J. Sullivan**, Tricentral Trading Ltd  
Kings Road, Flitwick, Beds.  
Tel: 95-712121.

**J. Fedigan**, Adriatic Enterprises Ltd  
20 St. Margarets Way, Leicester.  
Tel: Leicester 0533-26022/3

**Mr D. Newton**, Lormane Agents Ltd  
72-76 Union Street, Dunstable, Beds.  
Tel: 660272.

**Mr J. Mead**, Pilcourt Ltd  
151 Bearton Road, Hitchin, Herts.  
Tel: 0462-4367.

**Mr G. White**, White's Stationers Ltd  
57 High Street, Woburn Sands  
Milton Keynes MK17 8QY  
Tel: 0908-583291.

**Mr J. Peters**, Avica House  
346 High Street, Berkhamstead.  
Tel: 75977.

**Mr D. Keech**, D. W. King & Co  
Argyll Works, Stevenage, Herts.  
Tel: 0438-4400.

**Mr D. Ludlow**, Ludlows of Luton Ltd  
Thistle Road, Windmill Trading Estate,  
Luton, Beds. LU1 3XJ.  
Tel: Luton 29883/4.

**Mr F. Ludlow**, Frank Ludlow Ltd  
71 Windmill Road,  
Luton, Beds.  
Tel: Luton 414441.

**Mr J. Boylen**, Berkeley Associates  
Printing Specialists, PO Box 332, Newton  
Longville  
Milton Keynes MK1 7QA  
Tel: 0908-75918.

**Mr D. W. Graves**, Westmount  
Gravel Path, Berkhamsted, Herts.  
Tel: 04427-75977.

**Mr F. W. Pearce**, F. W. Pearce (Builders) Ltd  
1a Wilsden Avenue, Luton, Beds.  
Tel: 24163.

**Mr Tony Lambert**, Broad Street Print  
9 Broad Street, Hemel Hempstead, Herts.  
Tel: 0442-65490.

**Mr M. Manning**, Beard & Manning Ltd  
152 Leagrave Road, Luton, Beds.  
Tel: 22538.

**Mr T. Bailey**, Wallspan Bedrooms Ltd  
Industriale Estate, Maulden Road, Flitwick, Beds.  
Tel: 9571-3621.

**Mr D. Rand**, David Rand & Co Ltd  
51 Radlett Road, Frogmore, St. Albans, Herts.  
Tel: 98-72492.

**Mr R. A. Finch**, Computer Technology Ltd  
Eaton Road, Hemel Hempstead, Herts.  
Tel: 82-3272.

**Mr E. Elliott**, Emeralla  
Market Square, Biggleswade, Beds.  
Tel: 0767-313273.

**Mr J. Waller**, Lathom & Co  
King Street, Luton, Beds.  
Tel: 29221.

**Mr E. Edwards**, County Motors Ltd  
Unit 1, 166 Camford Way, Sundon Park, Luton

# Competitions

## AWAYAGAME - AWAYAGAME

With nobody forecasting the correct score at Sunderland Mark Seller remains on top of our Awayagame league with 10 points.

R. Wakelin scored 1 point for a forecast of a 3-0 Sunderland victory which takes him to joint second place.

The leaders are now - Mark Seller 10; P. Bartlett 9; R. Wakelin 9; G. Brooks 8; Martin Deer 8; Marilyn Keys 8; P. Marsh 8 and J. Ogden 8.

## NAME THE FACES

Our photo caption shows three players' heads mixed up. Again, all you have to do is name the three players and their current club. Write your answers on a postcard with your name and address and send your entry to Luton Town Photo-teasers, Luton Town Football Club Matchday Magazine, 70-72 Kenilworth Road, Luton.



## NAME THE STAR

Today we continue our 'Name The Star' competition from our West Bromwich Albion, West Ham United and Nottingham Forest Magazines. Each week we add a small proportion of the body of a famous player inviting you to guess the player's identity. As the details increase so the prize will diminish. Send your entries to: 'Name The Star' Competition, Luton Town Football Club Matchday Magazine, 70-72 Kenilworth Road, Luton.



Building houses to make homes in

at

**Bramingham Road, Luton**  
**Parkside, Houghton Regis**  
**Wallington Rise, Baldock**  
**Two Mile Ash, Milton Keynes**  
**Church Green, Bletchley**  
**Kimbolton Gardens, Bedford**  
**Merton Court, Bedford**  
**Millfield, Bedford**  
**Padbury House, Bedford**

Future development: Astra Court, Luton

Telephone: Luton (0582) 422771

**Barratt**  
LUTON LTD



# NEWSDESK... NEWSDESK... NEWSDESK...

## WELCOME TO WATFORD

There's nothing like the magic of the FA Cup to provide a superb atmosphere and we couldn't have wished for more attractive opposition than our friends and rivals from Vicarage Road.

We take this opportunity of issuing a warm welcome to manager Graham Taylor, his players, directors and offices for what should be a memorable tie.



## HERE NEXT WEEK

A week today we make our third successive home appearance when we entertain Arsenal who make the short trip to Kenilworth Road from north

London. We look forward to seeing you again.

## SPECIAL GUESTS

Norman Fookes, a member of the Kenilworth Suite, entertained some special guests at our recent home game against West Ham. This happy group, from Ford's Dagenham plant, are pictured with Mr Fookes enjoying a drink after the match.

## CENTURY CLUB

Two home games in a week can't be too bad a start to a New Year. Today we welcome our friends from down the road and it goes without saying, when

Luton Town and Watford meet, we are in for a good afternoon's sport.

It is just about six weeks since some of our members made the short trip to Watford for the League game, and also spent an enjoyable time with our friends from Club 81. We look forward to returning their hospitality today.

During the West Bromwich game, a collection was made on behalf of the Luton and Dunstable Hospital Radio Appeal. At the time of writing, the exact figure collected in the Century Club was not available, but Trevor Donahue, who came round with his bucket, was very happy with the generosity of members, and asks me to pass on his thanks to Century Club members.

## CAN YOU HELP?

Our secretary John Wilkinson, who usually knows all the answers to the questions he is asked about the club, has at last been stumped.

He has received an enquiry from one supporter asking for details of three Scottish players, Duncan, Napier and Flavell, who are believed to have come to Luton for trials in 1945.

He also received another question from a supporter who wanted to know who the Luton player was who, between 1910-1920, was hit in the stomach on the pitch and is believed to have died in the dressing room at

Kenilworth Road.

If you can provide details, or the answer, please write to John at the club's offices.

## WHITBREAD WINNER

Whitbread, the main sponsors of our game against West Ham, were involved in an exercise which brought pleasure to one young Luton fan.

The brewers, in conjunction with the 'Herald', organised a competition for our Junior Hatters which provided Christopher Hood with a Luton Town set of kit.



Keeper Jake Findlay made the presentation on the pitch before the game and is pictured with Whitbread representatives Colin Musson (left) and Phil Dodd.

## HAPPY SPONSORS

We appreciate all the help given to us by sponsors and were pleased to welcome Luton company J. Sapsworth, who sponsored the match ball, to our game against West Ham.



Kirk Stephens and skipper Brian Horton are pictured with Jack Sapsworth senior (left) and Jack Sapsworth junior after the game.

## IF IT'S A DRAW

If today's tie ends in a draw, the replay is scheduled for Vicarage Road on Tuesday evening (7.45 pm).

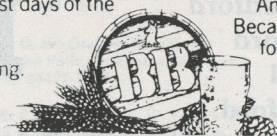
Tickets for the game will be on sale in the Kenilworth Road commercial office from 9 am tomorrow morning.

# THE LOCAL TASTE AND HOW TO SATISFY IT

We're very definite about our taste in beer around here. A clear light pint is what we look for; with a good, clean smack of malt and hops.

And there's only one name that really satisfies the local taste - BB. The light beer first brewed in Luton during the darkest days of the War by J. W. Green.

Only the finest hops and good, ripe barley go into the making. Then the brew is matured to exactly the right degree to give you a bright refreshing pint with a sound, full flavour.



WHITBREAD

American servicemen in local wartime bases declared that BB, chilled, was the nearest taste to Stateside draught.

It went down well when Syd Owen ruled the Hatters.

And it's been going down well ever since. Because BB is brewed with a proper respect for quality. To keep up the traditions we value round here.



Graham Ford

Your Comprehensive Builders Merchants



Depots at:  
LUTON — KINGSWAY 31199  
DUNSTABLE — BEALE STREET 603111  
LEIGHTON BUZZARD — LEIGHTON ROAD 373486



Falcon

WE  
KNOW  
WHERE  
WE'RE  
GOING.

FALCON HOLIDAYS LTD

Take no chances book with a bonded A.B.T.A. member. Phone now for a copy of our latest brochure

FALCON HOLIDAYS LTD  
190 Campden Hill Road  
London W8  
Telephone: 01 221 6298



# Canon captures the action—you take home the results.



# Canon

The ultimate camera choice.

Canon (UK) Ltd., Camera Division, Brent Trading Centre, North Circular Road, Neasden NW10 0JF.

Canon



## HATTERS WHO'S WHO

Tony Pullein continues his series on former Luton players. Today: Jimmy Ryan.

Jimmy Ryan was one of four Manchester United players transferred to Luton on the same day in April 1970. 'It was a bit like a Red invasion of Kenilworth Road,' he quipped later.

Don Givens, Peter Woods and Ken Goodeve were the colleagues who joined Jimmy in the move to Luton but he was the one who was to give the club, probably, the best service.

'It's always a wrench for anyone who has to leave Old Trafford,' he said. 'Everytime I read about an old United player, he invariably says the same thing. But, of course, Manchester United is one of the world's greatest clubs and there's a very special atmosphere.

'But I had been there for seven years and, though I had a few runs in the first team, I realised that, if I was to become a regular League player, I would have to move on.'

Jimmy was playing for a Scottish Junior club, Corrie Hearts, when Manchester United signed him in 1963. It was all a bit overwhelming at first for he was surrounded by players like George Best, Bobby Charlton, Denis Law, Bill Foulkes, Harry Gregg and Nobby Stiles.

Matt Busby was manager at the time and the club was just really getting back on its feet after the Munich disaster of 1958.

He worked hard at his game in the Junior teams and gradually established himself in the Reserve team. He eventually got his chance in the First Division in 1965-66 and scored in one of his early games.

Luton suffered immediate relegation, in spite of a magnificent late battle. 'And, as we went down, so United returned to the First Division,' sighed Jimmy. And he never did get his chance to play against his former club in the League.

When he was no longer sure of a place in the Luton side, Jimmy decided to try his luck in American soccer and left Kenilworth Road

in April 1977. His last League appearance for the club had been at Bristol Rovers on New Year's Day that year.

In all, he made just over 200 appearances in League football, his complete record being:

### LEAGUE RECORD

		Apps	Gls
Manchester Utd	1965-66	4	1
	1966-67	4(1)	—
	1967-68	7(1)	2
	1968-69	6	1
	1969-70	—(1)	—
Luton	1970-71	34(4)	3
	1971-72	7(4)	—
	1972-73	39	4
	1973-74	40	7
	1974-75	30(1)	7
	1975-76	13(3)	—
	1976-77	10	—
		194(15)	25

TONY PULLEIN





*Your local suppliers of  
printed polythene & paper bags.  
Short runs a speciality.*

**Princess Packaging Ltd.**

HEATHFIELD WORKS, LEYTON ROAD, HARPENDEN, HERTS.  
AL5 2JB TEL. (05827)66806 OR 64431 (24 HR. SERVICE).

For all your  
Floral arrangements contact:

**INBLOOM**

(Suppliers to Kenilworth Suite)  
45 Latimer Road, Luton

## Cleandustrial Services Ltd

The Professional Approach to  
Your Cleaning Problems

**84 Aldermans Hill N13**

Official Cleaning Contractors to  
Luton Town FC

Telephone: 01-882 4626

## NORTH LUTON INDUSTRIAL ESTATE

### NEW FACTORIES/ WAREHOUSES AVAILABLE

FULLER PEISER **St Quintin**  
**01-499 8931 01-236 4040**

## SHOREY'S FUELS



ANTHRACITE  
PHURMACITE  
COALITE  
REXCO  
HOMEFIRE  
COAL

**YOUR NATURAL WARMTH  
FROM YOUR LOCAL  
SOLID FUEL MERCHANT**

28 Sheepfold Hill, Flitwick, Bedfordshire  
**Telephone: Flitwick 713289 Silsoe 60694**

# John's



# Journal

**JOHN WILKINSON - CLUB SECRETARY**

In the recent Coventry City magazine, I included an old programme of a Luton Town v Coventry City match played on 25th April 1936 and asked if anyone knew the result. It is nice to know that some of you do take the trouble to read the articles I place in the programme because I had quite a response to this one and the majority of you were correct in your answers.

For those who didn't guess correctly, the information is as follows:

The Teams — LUTON TOWN: Dolman, Mackey, Smith, Findlayson, Nelson, Fellows, Hodge, Martin, Payne, Roberts, Stephenson.

COVENTRY CITY: Morgan, Aspley, Smith, Frith, Mason, Curtis, Nesty, Lauderdale, Bourton, Lake, Liddle. The score was 1-1 and Joe Payne scored for us and Bourton for City.

The return fixture was the following Monday and the only team change was in the City side where Elliott played at centre-half instead of Mason. The result of this match was a 0-0 draw. If anyone has a question on old teams or scores and think I can help, drop me a line at the club's office and I will be pleased to assist if I can.

Our visitors today are also most welcome to our first meeting in the FA Cup competition and I would like to add my piece to the tremendous job Graham Taylor has done at the club. His recent article in the Press saying he was looking for players of any age to play for him during the recent spell of injuries brought him hundreds of replies.

Behind Graham there is also another team who do their part. Bertie Mee and Eddie Plumley are two and I must mention Roger Fleming.



# MEMORY LANE

**THIS WEEK  
ALAN GARNER**

Alan Garner was persuaded to join the Hatters after serving a successful apprenticeship with Millwall. He soon became a regular member of the first team squad, making 88 appearances in his three-and-a-half years at Kenilworth Road.

February 1975 saw him make the short journey to Vicarage Road where he made over 200 appearances for the Hornets before moving to Portsmouth where he completed his League career.

He has always kept an interest in the local clubs and still lives in Barton in the house he bought when he left Millwall for Luton Town.

# Anglia Television

Proud to serve  
the  
East of England.





## Today's Sponsor... Today's Sponsor

Today's sponsors include Computer Technology Ltd, CTL, a fast growing and successful company, designs, manufactures and markets powerful computers. Some would say that's only appropriate for the start of 1984; George Orwell would have been delighted! But, in fact, CTL's computers couldn't be more different from Orwell's Big Brother. For a start, they're designed to be friendly to their users and are frequently used by organisations to give better service to their customers.

CTL is a local company based in Hemel Hempstead and is now in its 18th year. As a computer manufacturer, CTL is rather rare, being British, independent, privately funded and growing fast and profitably! For the last couple of years CTL has been growing at 50 per cent per year and, indeed, growth is only limited by the ability to recruit fast enough!

This success is largely due to some unique features of CTL computers. In particular, they can 'bounce-back' after any kind of failure without affecting the people using the computers. As more and more people depend on computers, that 'bounce-back' quality becomes very important.

For instance, CTL customers include many large hospital laboratories, where fast reliable



response is vital, and all sorts of commercial companies who take orders direct over the telephone and keep their company information right up-to-date.

'There's no stopping us!' is CTL's punchline and that is the theme of a National Press and TV advertising campaign, starting tomorrow.

CTL intend to have a prosperous 1984 — there's no stopping us! — and we hope there's no stopping you either.

We wish everyone here a happy and prosperous New Year and success throughout 1984.

## Today's Sponsor... Today's Sponsor

The Richmond Group are major electronic and engineering contractors to industry — with manufacturing sites at Luton Airport and Markyate, Hertfordshire.

Last year saw the expansion of the group by the takeover of a well known Luton based engineering company, E. W. Hudson Ltd, which, transferred to our Luton Airport factory, combines to offer the most comprehensive engineering capability in the town.

As major contractors to the aerospace and oil industry, 1984 is set to see the group expand further. To meet the needs of this growth the company now want to recruit

more skilled and semi-skilled operators.

If you are trained in any of the following vacancies and are looking for varied and interesting work, good working conditions with top rates of pay contact:

The General Manager  
Richmond Precision Engineering Ltd  
Airport Approach Road  
Luton Airport  
Luton

Telephone: Luton 416969

We are looking for: turners, millers, grinders, fitters, horizontal borers, CNC programmer/ operators, fabricator/welders.

## Today's Sponsor... Today's Sponsor

If you are a fitness fanatic, you will be more than interested to learn that the facilities offered by the Embassy Health and Fitness Centre in Archway Road, Luton, are augmented by a superb restaurant. Mouthwatering dishes such as entrecote steak garni, porterhouse steak, tornedos rossini, grilled lamb cutlets, supreme of chicken kiev, duck a la orange, steak diane, scampi menche and beef stroganoff are readily available to tempt and satisfy your taste buds.

Managing director Peter Marshall was brought in by the Marshalls of Luton Group to plan and run the centre created 'by businessmen for businessmen'. And there is no doubt it is a huge success.

The centre has created the best fitness and eating appetites in Luton and the elegant Embassy Restaurant will satisfy the parts the gymnasium staff cannot reach. The restaurant is also available for private parties — and there's free parking for up to 50 cars. Is that a deal you can afford to ignore?

The Embassy Restaurant was designed for you to dine in attractive, comfortable and intimate surroundings, where you will be greeted with the 'olde worlde' courtesy and service and at prices which reflect consideration for your pocket. There is an appetising, imaginative and well thought out menu with no less than 16 main course choices, all supported by a fine wine cellar. So why not book a table and join us now.

Our à la carte menu gives a wide range of dishes scampi, trout, duckling, lamb, steaks and chicken, all done in their own individual way. The head waiter brings many special skills to the restaurant, but none more than cooking at your table.

The Chef's Plat du Jour is a delightful two or three course luncheon prepared with fresh seasonal vegetables. If you're in a hurry at lunch time, then the Embassy daily roast is for you, or enjoy it at your leisure.

Banqueting, weddings, anniversaries and other parties are catered for with the same thought, attention and consideration given daily in our restaurant. Each function is tailor-made to individual needs, so you get just what you want for your occasion.



Come in and discuss your requirements, or telephone. The aim of the Embassy Health and Fitness centre is to provide our members with effective and enjoyable fitness training under the personal supervision of our resident staff.

To assist with your training programme we have equipped our exercise areas with the latest and best training aids and exercisers including cardiovascular efficiency monitoring plus specially selected body toning for both the ladies and gents exercise areas, with of course saunas, sunbeds and the unique jacuzzi which provides gentle body massaging and relaxation by sitting in the warm fresh waters of a spa bath at 100°F.

Our centre recognises that no two people are in the same physical condition and therefore provides individual assessments in order to determine the correct training programme to suit individual capabilities. The restaurant is open to non-members for lunch, dinner or a bar snack. Build your muscles — and your appetite — at the Embassy Health Club and restaurant. A telephone call to Luton 584944 will bring you all the details.

## Travel...



## Travel...



If you are thinking of following us to Wolves two weeks today, why not take advantage of our Travel Club. We'll transport you there by luxury coaches which leave the Maple Road car park at 10.30 a.m.

And we'll charge you only £3.50.

Make your booking in the commercial office after today's match.



## WATFORD SAILING CLOSE TO THE WIND

Today's FA Cup encounter gives Watford a respite from their First Division relegation worries and opens the door to their last chance of winning something this season. At the moment the Hornets are going through a period of transition as manager Graham Taylor is in the process of re-building his team.

'We are still some way from being a good First Division side,' he says. 'And I think we shall be sailing rather close to the wind for the rest of this season.'

Last season, Watford took runners-up position in the First Division in their first season at the top.

During the summer they lost two international strikers, England's Luther Blissett joining AC Milan for £1m and Ireland's Gerry Armstrong going to Real Mallorca for £200,000.

Another forward, Ross Jenkins, was also released after 10 years of magnificent service to the club.

### CONSIDERABLE CHANGES

So considerable changes have been taking place in the Hornets side and Mr Taylor has made several important new signings. The latest was Maurice Johnston, a striker signed from Partick Thistle for £200,000. Maurice made his Scottish League debut for Partick Thistle in 1981-82, leading their scoring list with 11 goals. Last season he really excelled himself when scoring 32 goals and he was introduced to the Scotland Under-21 side this season.

Johnston made a great start with Watford, hitting a hat-trick against Wolves in only his second game. He then scored in his next two matches. Johnston, of course, didn't score on his debut which was against Luton when two new full-backs were both drafted into the side.

Right-back Dave Bardsley was signed from Blackpool for £150,000. A one-time Blackpool apprentice, Dave made his first League appearance in 1981-82 and established himself in Fourth Division football last season.

Neil Price, a former apprentice, took over from Lee Sinnott who was signed from Walsall for £100,000 a few weeks

ago. Lee developed in the junior team at Fellows Park and made his debut in the Third Division two seasons ago.

The right-back position had been giving Mr Taylor quite a few problems. The highly-experienced former Arsenal player Pat Rice and the young Charlie Palmer had previously filled the number two shirt.

### EXPERIENCE

Pat graced the Gunners' team for well over a decade and was capped by Ireland on 49 occasions whilst at Highbury. With 397 First Division games behind him, Pat believed he had said farewell to First Division football when he left Highbury for Watford in 1980. But it was his experience which helped Watford to win First Division status in 1982.

Palmer is one of several youngsters given his chance in the First Division this season. Charlie made his debut at QPR in September.

Steve Sims and Paul Franklyn have been playing in the middle of the defence. Steve began his career with Leicester and Watford invested a then club record fee of £200,000 to sign him in 1979. He has 10 England Under-21 caps.

Paul is a former Watford apprentice who made his First League appearance against Liverpool on the final day of last season.

Goalkeeper Steve Sherwood has played for Watford in all four divisions. He began with Chelsea and spent loan spells with Millwall, Brighton and Brentford before signing for Watford in 1977.

Watford often use a 4-2-4 formation with Kenny Jackett and Wilf Rostron filling the midfield positions.

### WELSH HONOURS

Versatile Jackett can play in defence or midfield. Following Welsh Under-21 honours, he won five full caps for Wales last season. He won his eighth cap against Yugoslavia this season. Kenny has been in the Watford side since 1980.

Rostron has reverted to his old position in midfield following a very successful spell at left-back. Wilf played First Division football for Arsenal and joined Sunderland for £40,000 in 1977. Two years later he was transferred to Watford for £150,000.

Other possibilities for midfield positions include Richard Jobson and Les Taylor. Richard developed in the Watford youth team and made his League debut against Ipswich in December 1982. He later won a recall and played a total of 13 League matches last term.

Les recently returned to the side following injury. Oxford gave Les his League chance in 1974-75 and he completed more than 200 League games for them before moving to Watford for £100,000 in 1980.

The four-man attack has included

# WATFORD

Nigel Callaghan, Johnston, George Reilly and John Barnes.

Callaghan received his League chance in 1980 and has been a regular for the past two seasons. He won his first of his five England Under-21 caps against Denmark last season.

### CONSISTENT SCORER

Reilly was a Corby amateur when Northampton spotted him. He soon became a consistent scorer with the Cobblers, topping their goals list with 23 in 1977-78 and 23 the following season. Cambridge then signed him for £180,000 and last season he was their top marksman with 11.

A £100,000 fee secured his transfer from Cambridge earlier this season. 'He's similar in style to Ross Jenkins, but five years younger,' explained Mr Taylor. 'I'm confident he will fit into our style of play.'

Though Barnes made his League debut scarcely two years ago, he is already an England international winning four full caps last season to add to Under-21 honours. He won further full caps against Denmark and Luxembourg this season.

Ian Richardson, Davy Johnson and Jimmy Gilligan have all enjoyed runs in attack this season.

Richardson made a sensational Watford debut, scoring twice to win the UEFA Cup against Kaiserslautern in September. He scored another two against Leicester. Last season Ian played for Blackpool on loan.

Johnson has so far been limited to a handful of first team appearances and is sometimes named as substitute. He's hoping he might make his breakthrough this season.

Gilligan had one brief League outing as substitute in 1981-82 and last season got four full League games, scoring twice against Manchester City. He also played for Lincoln on loan.

The arrival of Maurice Johnston meant that Watford had fielded a total of 26 players in their First Division side this season — more than any other First Division club.

With so many changes, it is not surprising that Watford have failed to sustain last season's level of performances in the First Division but they did come up with two fabulous achievements in the UEFA Cup.

They seemed well on the way to defeat after losing the first leg of round one to West German side Kaiserslautern 3-1. But in the return, young Ian Richardson scored twice on his Watford debut and the Hornets won 3-0 to win on aggregate.

Elimination looked certain when Watford missed a penalty and were held to 1-1 at home by Levski Sparta of Sofia. Yet, in the return game in Bulgaria, Watford pulled off a shock 3-1 victory.

Their run finally ended in round three when they went out 7-2 on aggregate to Sparta Prague.

### Back row (left to right):

Jimmy Gilligan, Steve Sims, Richard Jobson, Steve Sherwood, Steve Terry, Ian Bolton, Martin Patching.

Centre row: Paul Franklin, Pat Rice, Alan Paris, Jan Lohman, Eric Steele, Kenny Jackett, John Barnes, Charlie Palmer, Neil Williams.

Front row: Worrell Sterling, Nigel Callaghan, David Johnson, Neil Price, Ian Richardson, Wilf Rostron, Francis Cassidy, Les Taylor.

Seated: Malcolm Allen, Nigel Gibbs, Derick Williams, Gary Porter, Richard Sendall.



GRAHAM TAYLOR





# LUTON'S FUTURE

This afternoon, we take another look at the reasons behind our decision to re-locate the club. This informative article was written by Simon Inglis and was published in association with the Football League and the National Dairy Council. We think supporters will agree it explains the club's position fully.

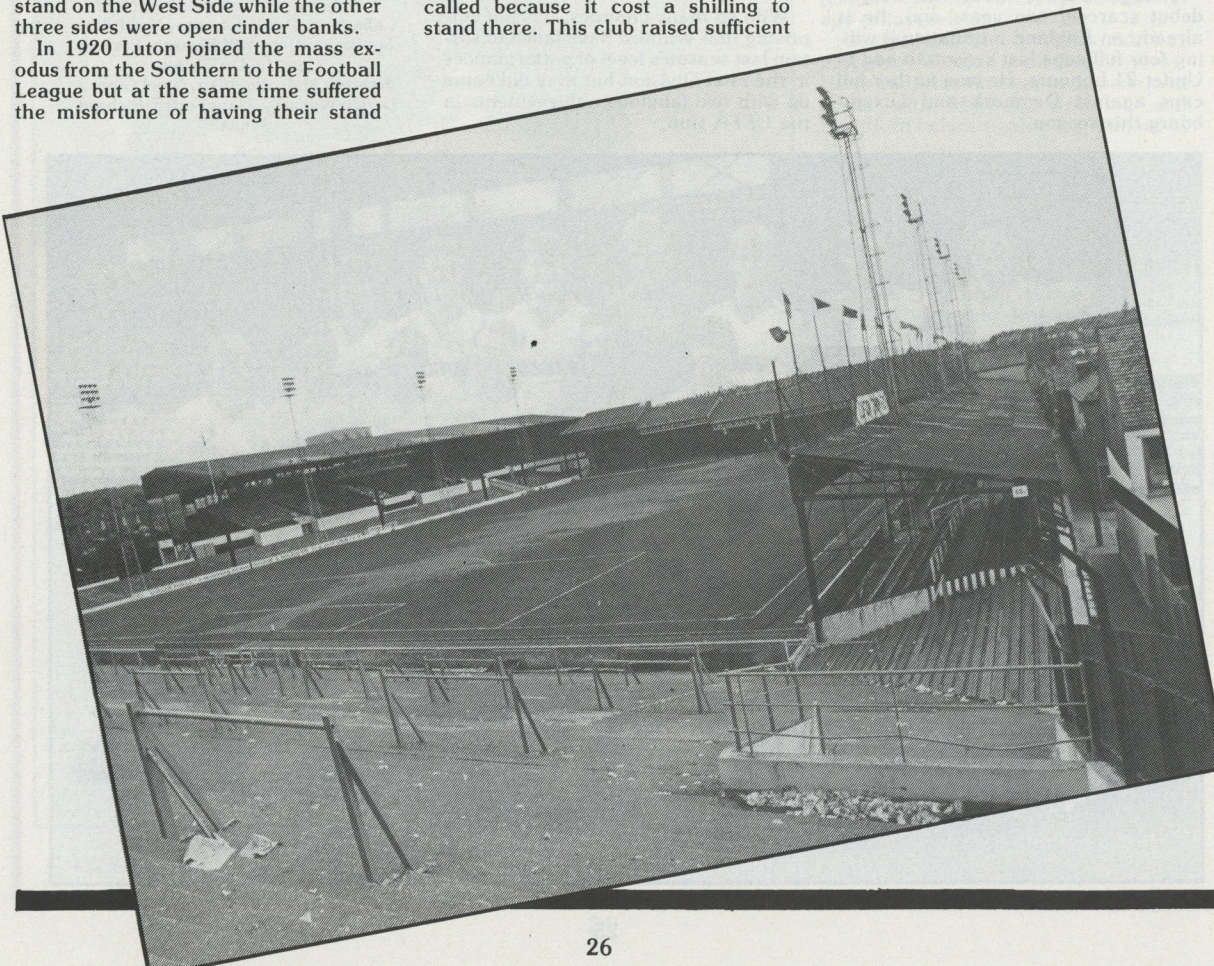
When Luton took over their new ground in Kenilworth Road, there was little to indicate how cramped the site would become in future years. A picture taken soon after 1905 shows an open field surrounded by white railings, with a picturesque house on one of the low banks. There was one small stand on the West Side while the other three sides were open cinder banks.

In 1920 Luton joined the mass exodus from the Southern to the Football League but at the same time suffered the misfortune of having their stand

burnt down. In its place was built the centre section of the existing Main Stand, the structure having been brought from Kempton Racetrack.

By the beginning of the 1930s the team began to look more promising, and in 1933-34 a club was formed for the regulars on the Bobbers Side — so called because it cost a shilling to stand there. This club raised sufficient

funds to build the narrow stand along the ground's East Side, and their faith was rewarded in 1936 when Town won promotion to Division Two. To cater for the larger crowds the Kenilworth Road terrace was raised to its present



# LUTON'S FUTURE

*'Anxious to leave, thwarted by the authorities, but driven by our success to improve our facilities.'*

height and the opposite Oak Road terrace covered. At the same time the Main Stand was extended to join up with the Oak Road roof in the north-west corner. By 1937 therefore, the ground had assumed the size and shape it has today.

Floodlights were installed in 1953, and first used on 7th October for a friendly v Fenerbahce, the top club in Turkey. The lights were individually mounted on short poles on each stand roof, but even when the system was updated several years later there was insufficient room to erect four corner pylons, hence the present system of four narrow pylons along the front of each stand.

As crowds grew there was only one way to expand the ground — apart from building extremely narrow double-decker stands, for which planning permission would certainly have been denied even if the capital had been available — and that was to steal a few yards from the houses behind the Oak Road terrace and build a few extra steps. Luton were able to do this because they owned the houses until 1974.

In 1977 the ground came under the jurisdiction of the Safety of Sports Grounds Act. Until then the club had done little to improve the ground, simply because the site was so inadequate that they always hoped to resite further away. There were plans for a 50,000 capacity stadium, dropped when the team went into the lower divisions, but in 1977 they had no choice. To bring the ground into line with the safety recommendations £350,000 had to be spent, mainly on improved access points and barriers, and the capacity dropped from 30,000 to its present level of 22,601. This includes 4,506 seats, of which 1,539 were installed in the Bobbers Stand on the original terracing.

But the story does not end there. Luton have been engaged in a 25-year-long struggle with Bedfordshire Coun-

ty Council over plans to build a new road on the site of the railway line, directly behind the Main Stand, a plan which would force Luton to move. (The railway line is from Dunstable to Luton but is used only for the transport of concrete. The projected road was to be a relief road for the main route, also from Dunstable to Luton.)

Of course the club wanted to move, but unless the local authorities were able to grant hefty compensation and co-operate in the building of a new stadium, they simply could not afford to. Three year's negotiation cost Luton £200,000 in legal fees alone.

The problem is exacerbated by the fact that it is very difficult to find a new site acceptable to local residents. As at Watford it is a case of, 'better the devil you know...'

Meanwhile, Kenilworth Road cannot develop, the club will not spend more than absolutely necessary on the ground, and there is the danger that support will dwindle because facilities, especially parking, are increasingly inadequate.

Whenever the state of modern British football grounds is discussed, one of the most popular points to be raised invariably concerns how cramped many grounds are by their surroundings. Until you have been to Kenilworth Road you cannot appreciate how cramped is 'cramped'. Compared with Luton's ground Filbert Street is spacious, the Baseball Ground well situated, even Millwall might just feel a little less aggrieved (but only a very little) with their lot.

The Main Stand appears quite tall, but this is an optical illusion, enhanced by the ground's narrowness and by the four floodlight pylons poking up through the front of the roof. As if these were not enough of a viewing obstacle, one also has to contend with another 11 vertical supports from the seats, plus a suspended television camera gantry.

To the left of the Main Stand is the Oak Road terrace, covered by an unusual roof built in three sections, climbing from the Bobbers to the Main Stand roof, with advertisements hung below the gutters which make the terracing underneath very dark. Perhaps here more than in any other part of the ground one is reminded of how little space Luton possess.

The Bobbers Stand is a low, narrow enclosure with room for just eight rows of seating on a wooden frame. The perimeter fence and the roof are lined with advertisements, two deep on the roof, and above these are the original floodlight poles which now support netting — to stop the ball going over. It's as bad as that! There are another four thin floodlight pylons on this side, also lining the front. Behind here is the Beech Hill Path, an alleyway between the houses and the stand, just wide enough for two people walking side by side.

It is not that Kenilworth Road is too small; the present capacity is just about right for current demands. But it lacks sufficient seating, access to parking facilities is limited, and worst of all there is precious little space to build on what they already have. There would be no point in having a new double-decker stand if access to it was so limited that half the space could not be used because of safety regulations.

The road plan is due to go ahead in 1985 and will rob Luton of their executive and social facilities behind the Main Stand. If the council cannot help with an alternative site in Luton, the club may have to re-locate to Milton Keynes.

Luton are in almost the same predicament as their nearest neighbours Watford; anxious to leave, thwarted by the authorities, unwanted elsewhere, yet driven by their own success to improve their facilities. If only they had stayed in the Fourth Division, probably none of this fuss would have arisen.



# REPLAY IN COLOUR. . . REPLAY IN COLOUR



Today's meeting with our friends from Watford revives memories of our League game at Vicarage Road last season. This colour picture shows Paul Walsh and Trevor Aylott attempting to break through the Hornets' defence.





# TOWN RECORD '83/84

Opponents	Result	Attendance	Points	Position	Sealey	Stephens	Turner	Horton	Elliott	Donaghy	Hill	Stein	Walsh	Bunn	Moss	Antic	Aylott	Daniel	Thomas	Parker	Johnson	Goodyear	Nwajobi	Own Goal
<b>Goals Scored</b>								2	2		2	7	10	3	3		7	2					1	2
<b>1983</b>																								
<b>August</b>																								
27 Arsenal	1-2	39,348	—	—	1	2	3	4	5	6	7	8	9	10	11	—								
31 Leicester City	3-0	11,929	3	—	1	2	3	4	5	6	7	8	9	10	11	—								
<b>September</b>																								
3 Sunderland	*4-0	10,846	6	5	1	2	3	4	5	6	7	8	9	10	11	—								
6 Norwich City	2-2	11,905	7	5	1	2	3	4	5	6	7	8	9	10	11	12								
10 Manchester United	0-2	41,013	7	8	1	2	3	4	5	6	7	8	9	10	11	12								
17 Wolverhampton W.	4-0	10,975	10	7	1	2	3	4	5	6	7	8	9	10	11	—								
24 Nottingham Forest	0-1	16,296	10	13	1	2	3	4	5	6	7	8	9	10	11	12								
<b>October</b>																								
1 Aston Villa	1-0	12,747	13	9	1	2	3	4	5	6	7	8	9	10	11	12								
4 Rotherham (MC2-1L)	3-2	4,035	—	—	1	2	3	4	5	6	7	8	9	10	11	—	11							
15 Everton	1-0	14,325	16	7	1	2	3	4	5	6	7	8	9	10	11	—								
22 Southampton	3-1	12,389	19	4	1	2	3	4	5	6	7	8	9	10	11	12	9							
25 Rotherham (MC2-2L)	0-2	6,755	—	—	1	2	3	4	5	6	7	8	9	10	11	—	9	11						
29 Liverpool	0-6	31,940	19	6	1	2	3	4	5	6	7	8	9	10	11	—	—	—	3					
<b>November</b>																								
5 Queens Park Rangers	1-0	15,053	22	4	1	2	3	4	5	6	7	8	9	10	11	—	10	—	—	11				
12 Birmingham City	1-1	11,111	23	5	1	2	10	—	5	6	7	8	9	10	11	—	—	—	3	11	4			
19 Tottenham Hotspur	2-4	17,275	23	10	1	2	3	—	5	6	7	8	9	10	11	—	10	—	—	—	—	4		
26 Watford	2-1	17,791	26	5	1	2	3	4	5	6	7	8	9	10	11	—	10	—	—	—	—	—		
<b>December</b>																								
3 Coventry City	*2-4	10,698	26	10	1	2	3	4	5	6	7	8	9	10	11	—	10	—	—	—	—	—		
10 Stoke City	4-2	10,329	29	8	1	2	—	4	5	6	7	8	9	10	11	—	10	11	3					
18 West Bromwich Albion	2-0	11,566	32	6	1	2	—	4	5	6	7	8	9	10	11	—	10	11	3					
26 Notts County	3-1	9,789	35	3	1	2	—	4	5	6	7	8	9	10	11	—	10	11	3					
27 West Ham United	0-1	16,343	35	5	1	2	12	4	5	6	7	8	9	10	11	—	10	11	3					
31 Sunderland	0-2	19,482	35	6	1	—	3	4	5	6	7	8	9	10	11	—	12	—	11	—	—	2+		
<b>1984</b>																								
<b>January</b>																								
2 Nottingham Forest	2-3	12,126	35	9	1	2	—	4	5	6	7	8	9	10	11	—	—	—	3	—	—	—	11	
7 Watford (FAC3)																								
14 Arsenal																								
21 Wolverhampton W																								
28 Ipswich Town (FAC 4)																								
<b>February</b>																								
4 Aston Villa																								
11 Manchester United																								
15																								
18 Liverpool (FAC 5)																								
25 Southampton																								
<b>March</b>																								
3 Queens Park Rangers																								
7																								
10 Birmingham City																								
17 Norwich City																								
24 Leicester City (MC Final)																								
31 Ipswich Town																								
<b>April</b>																								
7 Everton																								
14 Tottenham H. (FAC SF)																								
17 West Ham United																								
21 Notts County																								
28 Watford																								
<b>May</b>																								
5 Coventry City																								
7 Stoke City																								
12 West Bromwich Albion																								
19 FA Cup Final																								

## WATFORD

Gold shirts, black shorts.

- 1 MIKE WALKER
- 2 DAVID BUTLER
- 3 JOHN WILLIAMS
- 4 KEITH EDDY
- 5 BILL BAXTER
- 6 TOM WALLEY
- 7 LARRY McGETTIGAN
- 8 RON WIGG
- 9 COLIN FRANKS
- 10 JIMMY LINDSAY
- 11 JOHN FARLEY
- 12

Referee:  
P. PARTRIDGE (Middlesbrough)  
Ball Donor:  
JAMES M. SIBTHORP LTD.,  
Engineers and Spring Manufacturers,  
Leavesden, Watford.

## LUTON TOWN

White shirts, black shorts

- 1 TONY READ
- 2 JOHN RYAN
- 3 ALAN SLOUGH
- 4 DON SHANKS
- 5 CHRIS NICHOLL
- 6 JOHN MOORE
- 7 PETER ANDERSON
- 8 MIKE KEEN
- 9 VIC HALOM
- 10 DON GIVENS
- 11 GORDON HINDSON
- 12

Linesmen:  
A. M. HARRINGTON (Goalfield)  
Orange flag  
C. C. SMITH (East Croydon)  
Red flag

Last Season's Result 0-1

Flashback this afternoon takes a peep at a game played at Vicarage Road on 13th November 1971.

For those fans who cannot recall the result, Watford won 2-1 when their goals were scored by Eddy and Franks. Our reply came from Halom.

## FOOTBALL COMBINATION FIXTURES 1983-84

Date	Opposition	F	A
Aug. 27	Chelsea	1	1
Sept. 7	Leicester City	1	0
Sept. 10	Ipswich Town	0	0
Sept. 14	Reading	4	1
Sept. 17	Arsenal	1	2
Sept. 20	Millwall	4	0
Sept. 24	Swansea City	3	1
Oct. 3	Charlton Athletic (7.30)	1	1
Oct. 8	Bristol Rovers	2	1
Oct. 11	Norwich City	0	0
Oct. 18	Crystal Palace	0	0
Oct. 25	Southampton	3	1
Nov. 5	Brighton and Hove A.	4	0
Nov. 9	Millwall	2	1
Nov. 23	Oxford United	0	1
Nov. 26	Swindon Town	4	1
Dec. 3	Tottenham Hotspur	2	1
Dec. 10	Watford	3	0
Dec. 17	West Ham United	2	1
Jan. 3	Queens Park Rangers		
Jan. 17	Chelsea		
Jan. 21	Reading		
Jan. 28	Swansea City		
Feb. 4	Arsenal		
Feb. 14	Charlton Athletic		
Feb. 25	Queens Park Rangers		
Feb. 28	Southampton		
Mar. 6	Brighton & Hove A.		
Mar. 10	Fulham		
Mar. 13	Watford		
Mar. 17	West Ham United		
Mar. 20	Fulham		
Mar. 24	Norwich City		
Mar. 27	Crystal Palace		
Mar. 31	Leicester City		
April 7	Ipswich Town		
April 10	Birmingham City		
April 14	Oxford United		
May 12	Tottenham Hotspur		
TBA	Birmingham City (H)		
	Swindon Town (A)		
	Bristol Rovers (H)		

## SOUTH EAST COUNTIES LEAGUE FIXTURES 1983-84

Date	Opposition	F	A
Sept. 3	Wimbledon	3	2
Sept. 9	Southend	4	2
Sept. 17	Brighton	4	1
Sept. 24	Bristol Rovers	1	4
Oct. 1	Swindon Town (Cup)	1	5
Oct. 15	Oxford United	0	0
Oct. 22	Reading	0	3
Oct. 29	Oxford United	1	2
Nov. 5	Swindon Town	0	5
Nov. 19	Tottenham	1	1
Dec. 3	Brentford	3	0
Dec. 17	Bristol Rovers	1	3
Feb. 4	Southend		
Feb. 11	West Ham United		
Feb. 18	Tottenham		
Feb. 25	Brighton		
Mar. 10	Wimbledon		
Mar. 24	Swindon Town		
Mar. 31	West Ham United		
April 28	Brentford		

## ATTENDANCES AND DIVISION ONE TABLE 1983-84

Home League Games	Home	Away	Pts
Highest	Average		
45,122	31,531	Liverpool	22 7 3 1 23 6 3 2 14 11 45
56,121	43,347	Manchester United	22 8 1 3 26 12 4 5 1 14 12 42
32,555	23,500	West Ham United	22 7 2 2 26 11 5 2 4 11 10 40
29,692	18,334	Nottingham Forest	22 8 2 2 26 11 4 1 5 15 18 39
20,674	17,846	Southampton	22 8 2 1 17 8 3 4 4 9 10 39
21,453	13,837	Coventry City	22 5 3 2 15 9 5 4 3 16 16 37
39,318	23,271	Aston Villa	22 9 2 1 21 12 1 4 5 14 20 36
27,140	16,097	QPR	21 7 1 2 15 6 4 1 6 18 15 35
17,275	12,470	Luton Town	22 5 2 4 23 17 6 0 5 15 16 35
25,679	17,999	Norwich City	23 5 4 3 17 13 3 4 4 10 13 32
42,704	28,546	Arsenal	22 5 2 5 20 16 4 1 5 18 16 30
45,032	34,760	Tottenham	22 3 3 4 14 17 5 3 4 21



# Luton's star.



Two teams from Luton are currently making a name for themselves.

'The Hatters' are in the first division.

And Vauxhall-Opel are enjoying fantastic sales success.

Achievements in different fields, but

for the same reasons.

A consistently high all-round performance and magnificent team effort.

Facts confirmed by checking out today's line-up, and by a visit to your local Vauxhall-Opel dealer.

With stars like the Cavalier, the coming season promises to be even better for us.

We're sure that's also true of Luton Town.



## VAUXHALL-OPEL