

Welcome to

Luton Town

v

ROTHERHAM

MILK CUP 2nd ROUND – 2nd LEG

TUESDAY 25th OCTOBER 1983

KICK-OFF 7.30 p.m.

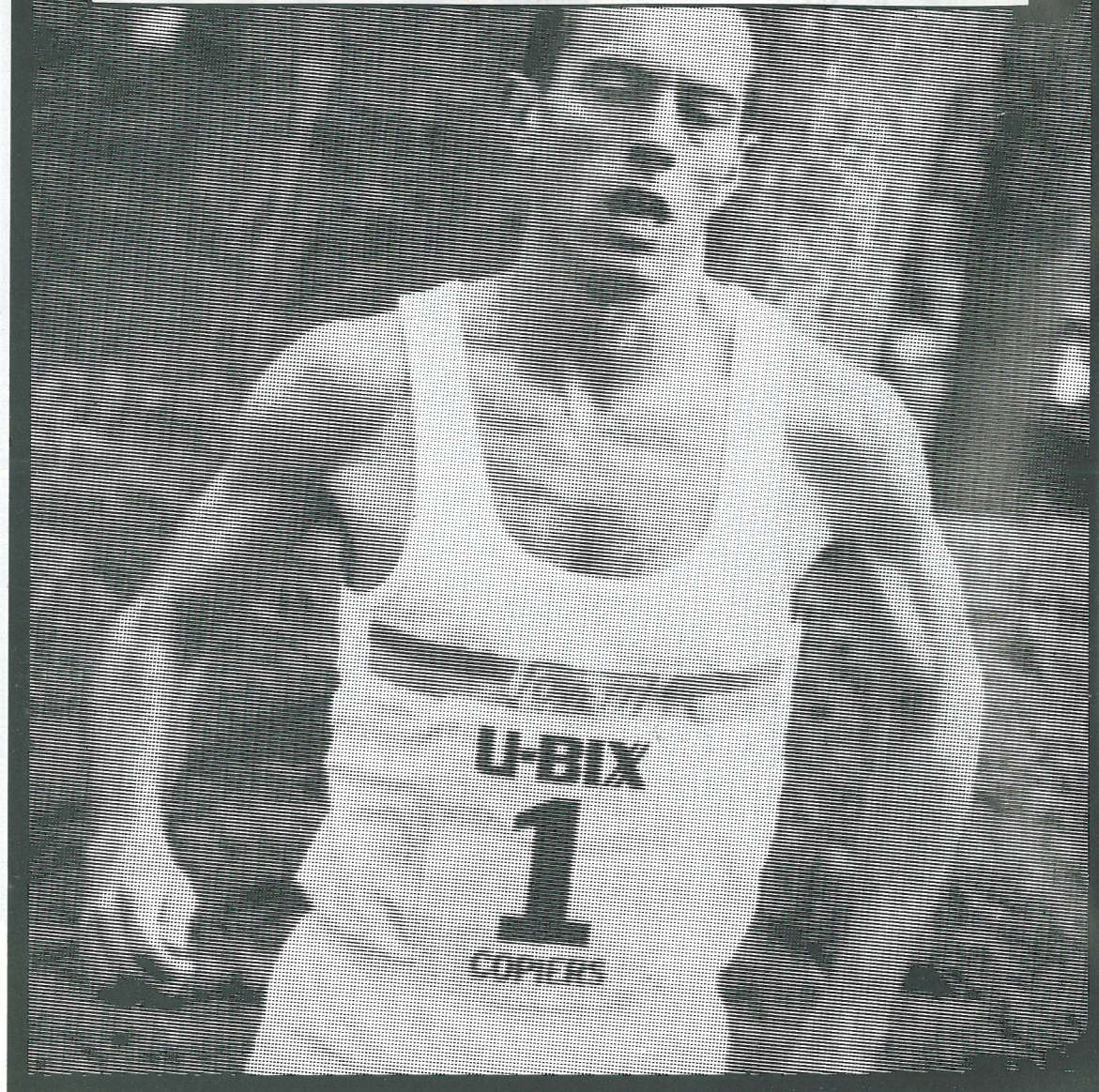


The Milk Cup



TONIGHT'S MATCH SPONSOR
Remdex-Bradley
Reprographics Limited

Keeping ahead of the competition
is something we're both good at.



Steve Ovett, Olympic 800 metre champion and holder of 1500 metre and 2 mile world records.

U-BIX

Record-breaking reliability.

Remdex-Bradley Reprographics Limited

31-33 WELLINGTON STREET, LUTON LU1 2QH (Registered Office)

Telephone: Luton 410442/23682

Luton Town F.C.

LUTON TOWN FC
70-72 Kenilworth Road
Luton
Tel: 411622

Chairman: Denis Mortimer

Directors:

R. L. Banks, D. J. Evans, E. S. Pearson
R. J. Smith, J. R. Smith (Executive)
D. J. Pleat (Team Manager)

President: T. Hodgson

Vice-Presidents:

J. A. C. Bain (Deputy President)
Sir Reginald Pearson OBE,
A. G. Berry, J. B. Brant, C. Bygrave,
B. Cole, B. England, N. S. Fookes,
C. Holloway, I. E. Holmes,
C. J. Evans, R. Larkinson,
L. Leppington, Eric Morecambe OBE,
R. Safranek, E. Waller, R. Unwin

Administration:

General Secretary: Graham MacKrell

Club Secretary: John Wilkinson

Commercial Manager
Bill Tomlins

Projects and Advertising Executive:
Mike Beevor

Promotions Manager: Mike Hardwicke

Catering Manager: Clive Hustwitt

Assistant Promotions Manager:
John Gornall

Auditors:
Arthur Young, McClelland,
Moore & Co.

Photographer: Gareth Owen

Playing:

Coaches:
David Coates, John Moore and
Trevor Hartley

Physiotherapist: John Sheridan

Doctor: W. A. C. Berry MBBS

All ticket enquiries please contact
Luton 30748. All matchday information
is obtainable from our 24-hour
answering service —
Telephone Luton 33010

Printed by
Hemmings & Capey (Leicester) Ltd

Team Check

LUTON TOWN



1	LES SEALEY	(0) (0) OAST
2	KIRK STEPHENS	
3	WAYNE TURNER	
4	BRIAN HORTON	
5	PAUL ELLIOTT	
6	MAL DONAGHY	
7	RICKY HILL	
8	BRIAN STEIN	
9	TREVOR AYLOTT	
10	FRANK BUNN	ANTIC
11	DAVID MOSS	DANIEL
12	MARK STEIN	

ROTHERHAM



1	ALAN STEVENSON	(1) (1) 2 AET
2	GERRY FORREST	
3	PHIL CROSBY	
4	BILLY McEWAN	
5	NIGEL JOHNSON	
6	JOHN STONE	
7	MICK GOODING	
8	KEVIN KILMORE	
9	PHIL WALKER	
10	BOBBY MITCHELL	
11	MARK RHODES	KAYNES
12	RHODES	

Referee: K. P. BARRATT (Coventry) Linesmen: R. W. PELLATT (Red Flag) M. W. VIGUS (Yellow Flag)

Tonight's Match is sponsored by:

Remdex-Bradley
Reprographics Limited

Tonight's Match Ball is sponsored by:

TAYLORS
Estate Agents · Surveyors
Auctioneers · Valuers

BEDFORD BUSINESS MEANS: *You need it, we've got it.*



A vehicle for every business.

You'll find Bedfords working in just about every business you can think of. That's because we offer a vast range of vehicles from light vans to heavy-duty trucks to keep the wheels of British industry turning. And, if you came to the match by coach, the chances are that also was a Bedford.



A dealer round every corner.

You'll find a Bedford dealer is never far away. He'll help you choose the vehicles that best suit your business needs; he'll advise you on our special leasing, insurance and warranty schemes; and he'll maintain your Bedfords in peak condition throughout their long working life.

Because, giving our customers what they need, when they need it, is what Bedford business means.



BEDFORD MEANS BUSINESS

MY VIEW

Tonight's game gives our public the opportunity of helping the side through to the next round. The first leg game was exciting to the last kick, when Brian Stein's run and cross enabled Trevor Aylott to score. Rotherham contributed to an excellent second period and, knowing George Kerr and his players, they will respond to their task this evening.

In the week before the Everton game, we had no fewer than six players away on international duty. The fact that these selected players reflected the whole area of the club from senior to youth gives me and our coaches a great sense of pride and pleasure. Mal Donaghy, Paul Elliott, Brian Stein, Paul Walsh, Gary Parker (England Youth in Iceland), Cahal McConville (Northern Ireland Youth in Turkey) were away while Mark Watts missed the opportunity, through injury, of travelling to Iceland. This representation is a barometer of the club's progress.

Whilst discussing internationals I am sure the recent games with Denmark and Hungary have been major talking points in the pubs and clubs. It has made outstanding copy for the Press. It takes three seasons to blend a team together successfully into a pattern of play and almost total understanding — that is, assuming you have a settled group of players.

So consider the difficulties of getting rhythm and style from a group of 11 from different teams who have, at best, three or four days together before a game. Good players should be able to mix, but sometimes it is easier if they play with each other on a Saturday regularly.

It is for this reason that partnerships have prospered, like Butcher/Osman (Ipswich), Robson/Wilkins (Manchester United) — up front Withe/Shaw, Mariner/Gates spring to mind, but of course I hope in time Brian Stein/Paul Walsh will do the trick, supported from behind by Ricky Hill.

A few weeks ago our first team players went to Houghton Regis to display their skills and meet the community. We have rarely, if ever, been better received. The hospitality was super, and the organisation on the evening was a great credit to Mr Phil Piggot, secretary of Harvest Home FC and his committee.

Last Monday, three of our players — Brian Horton, Kirk Stephens and David Moss — through the generosity of Mr Ron Unwin — took part in the FLESA Wishbones Golf Classic at the Belfry, Sutton Coldfield. Golf is a fine relaxation for the players to break



up the hard nine months' grind of the playing season. We now have several notable golfers on the staff, and playing in tournaments such as the FLESA Classic brings them into contact with not only sporting people, but people from all walks of life.

I am sure tonight's game will be a 'good one. Until the later rounds of the Milk Cup, there appears to be only a casual interest. The facts are that this tournament has gained in prestige each year and nowadays the rewards are considerable, not least the gateway to Europe, the Wembley final and the satisfaction and honour that brings. That must be our aim.

Enjoy the game.

MEMBERS OF THE KENILWORTH SUITE

MR D. SAVAGE
BEDFORD COMMERCIAL VEHICLES, LUTON

MR A. G. BERRY FCCA, CHAIRMAN
BLUE ARROW GROUP SERVICES LTD
5 LONDON ROAD, ST ALBANS, HERTS
BRENGREEN HOLDINGS PLC
61 CHEAPSIDE, LONDON EC2V 6AX

GARY CHAMBERLAIN
GARY CHAMBERLAIN WINDOW FASHIONS, UNIT 7,
BEAUMONT WORKS, SUTTON ROAD, ST. ALBANS, HERTS.
TEL: ST. ALBANS 62577

MR P. COOPER
CLEANDUSTRIAL SERVICES LTD, PALMERS GREEN, LONDON N13
TEL: 01-882 4626

FILMERGRAPHIC ASSOCIATES LTD
PRINTERS AND PHOTOTYPESETTERS
BAINSON HOUSE, ALTON ROAD, LUTON, BEDS.
TEL: LUTON 36407

FINE STAMPS LTD
BILTON WAY, LUTON, BEDS. TEL: LUTON 36761

MR N. S. FOOKES
N. S. FOOKES AND SONS, (PLANT FACILITIES) LTD
45 LATIMER ROAD, LUTON, BEDS. TEL: LUTON 26139

MR E. FOUNTAIN
VAUXHALL MOTORS, LUTON

BRIAN E. HANDSCOMBE (LIFE & PENSIONS BROKER)
48 ALMA STREET, LUTON. TEL: LUTON 425921/4

MR I. E. HOLMES, IVOR HOLMES LTD
82-88 MARSH ROAD, LUTON, TEL: LUTON 56622

MR C. J. HUDSON, E. W. HOLDINGS LTD
6 UNION STREET, LUTON, TEL: LUTON 30511

RICHARD C. LARKINSON, (BALDOCK) LTD
TWENTY PENCE ROAD, COTTENHAM, CAMBS.

MARK JAMES (SALVAGE) LTD
GRANGE HOUSE, 10 COMPTON AVENUE, LUTON BEDS.
TEL: LUTON 503777

MARSHALLS OF LUTON GROUP, MARSHALL CHAMBERS
MILL STREET, LUTON LU1 2NN, TEL: 429933

IAN C. CHEVERALLS
OPALVALE GROUP
189 WALLER AVENUE, LUTON, BEDS. TEL: LUTON 56122

MR & MRS S. J. PEARSON
55 LUTON ROAD, WILSTEAD, BEDFORDSHIRE JK45 3ET

DR & MRS G. L. PLESTER
9 BRIARS CLOSE, NUNEATON, WARWICKSHIRE

NIGEL TERRY, PRIORY FARM FOODS
81-83 PETERS STREET, BEDFORD, TEL: 0234 60372

MR A. HUNTER
RAVENMERE LTD, ALLRIC HOUSE, 21 FARLEY HILL, LUTON
TEL: LUTON 32640

RICHARDSON & BOTTOMS LTD
105-107 BISCOT ROAD, LUTON, BEDS. TEL: LUTON 35421/5

RICHMOND ELECTRONICS
(MARKYATE) LTD
HICKS ROAD, MARKYATE, HERTS. TEL: LUTON 840761

ROBINSON METAL (LUTON) LTD
CALEB CLOSE, 464 DUNSTABLE ROAD, LUTON, BEDS.
TEL: LUTON 53866

MR R. S. SAFRANEK
NEAHURST LTD
LONDON ROAD, LOWER STONDON, HITCHIN
TEL: HITCHIN 94-813545

MR. W. POWERS
SHAW & KILBURN OF LUTON
540-550 DUNSTABLE ROAD, LUTON, BEDS

T. & H. TYRE SERVICES LTD
MANOR ROAD, LUTON. TEL: LUTON 27665

MR R. W. UNWIN
R. W. UNWIN & CO. LTD
PROSPECT PLACE, WELWYN HERTS. TEL: WELWYN 6441

WALLSPAN BEDROOMS
INDUSTRIAL ESTATE, MAULDEN ROAD, FLITWICK, BEDS.
TEL: FLITWICK 713621

MR P. LAYCOCK
WALTON PRINT
BRITANIA HOUSE, LEAGRAVE, LUTON, BEDS.

MILK CUP SCENE...MILK CUP SCENE

QPR GO FOR RECORD

By Tony Pullein

Queens Park Rangers were hoping to achieve a new competition record when they travelled to Crewe for the second leg of their Milk Cup-tie. They needed a five-goal win to establish a new record aggregate victory.

Going for an away win of five goals would sound impossible in most circumstances but for Rangers, having crushed Crewe 8-1 in the first leg, it was a distinct possibility.

Liverpool, winners for the past three seasons, currently hold the record with an 11-0 aggregate victory over Exeter City two seasons ago. But it was clear from the opening moments of QPR's tie with Crewe, from the Fourth Division, that a new record might be on the cards.

Simon Stainrod scored their first after only some 12 seconds and, with Crewe utterly failing to come to terms with the plastic pitch, the home side piled on the agony. Stainrod completed a hat-trick.

When Liverpool set up the record, they started with a 5-0 win at Anfield and then won 6-0 at St James Park.

QPR, of course, already hold a unique place in this competition's history for in 1967 — when the Final was taken to Wembley for the first time — they became the first Third Division side to win the League Cup when coming from behind to defeat WBA 3-2.

DIFFICULT TASKS

● The Hatters were fortunate enough to come through the first leg with a narrow lead but many First Division clubs were facing difficult tasks in the return games.

Third Division Wimbledon gave one of the finest performances when defeating Nottingham Forest 2-0 and they were unlucky not to get more on a rare night when Forest were completely confused by the hard-running Dons. Manager Brian Clough was confident that, with ground advantage, his side had the ability to pull the tie out of the fire.

● West Brom have an even more difficult task as they went down 0-3 at Millwall. The Lions will clearly take a defensive stance at the Hawthorns and it seems an impossible task to expect the Throstles to score the four goals they will need to see them through. And that's if they don't concede another one.

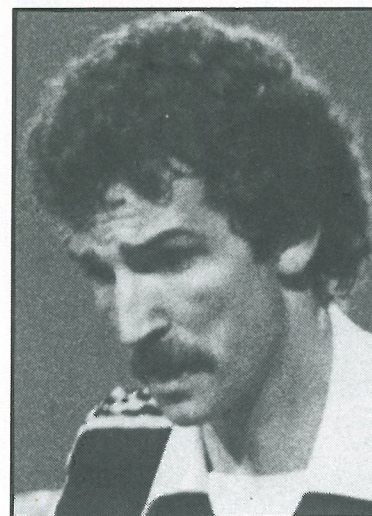
● Carlisle became the first team this season to score twice against Southampton and go the Dell in the belief that they can protect their 2-0 advantage sufficiently to put them through to the third round. Malcolm Poskett scored both their goals and he has special knowledge of the Saints' vulnerability.

Poskett was in the Watford side beaten 4-0 at the Dell in a second round tie three years ago. He also played in the return when Watford won 7-1 after extra-time! He scored two on that occasion too.

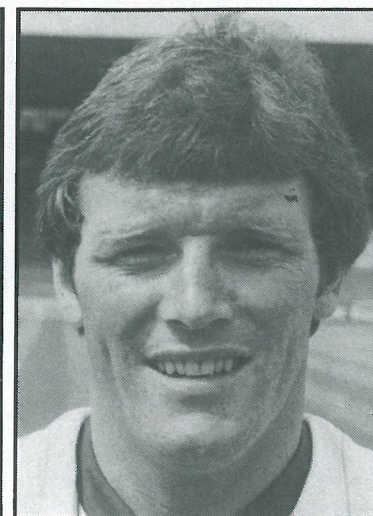
● Southampton, who came to Kenilworth Road on Saturday, are more defence-orientated these days so they will not find it easy to score three times — even against the Cumbrians.

FULL VALUE

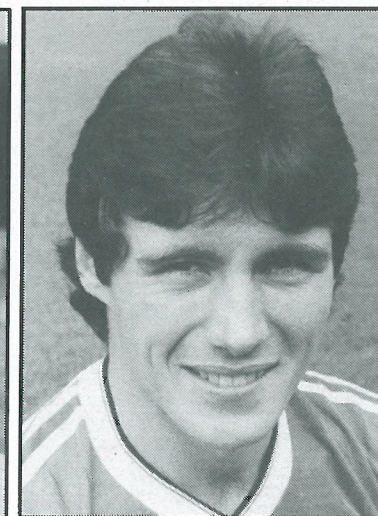
● For all those upsets, the biggest shock of the second round so far was Chester's 1-0 win at Leeds. Chester, bottom of the Fourth Division and with six successive away defeats behind them, were full value for their victory.



GRAEME SOUNESS



EDDIE GRAY



FRANK STAPLETON

Leeds' manager Eddie Gray shrugged afterwards: 'We wouldn't have scored if we had gone on all night!'

● Chelsea look poised for victory over First Division Leicester after winning their first leg 2-0 at Filbert Street. Kerry Dixon, the former Dunstable player, expects to score again and maintain his record of scoring in every Milk Cup game this season.

In the last round Kerry scored all the goals in a 4-0 second-leg victory over Gillingham — the best feat in the Milk Cup this season — and he is currently the competition's leading scorer:

6 goals — Dixon (Chelsea)*
4 goals — Adcock (Chesterfield)*
3 goals — Neal (Millwall)*
Shepherd (Southend)
Stainrod (QPR)*
Wark (Ipswich)*

*denotes still in competition

● John Wark came up with a timely hat-trick for Ipswich. They were trailing 2-0 at home to Blackburn at the interval before their Scottish international midfielder star came to their rescue. Ipswich are one of a few leading First Division clubs who have never reached this Final and they had high hopes of breaking that duck this season.

● Manchester United, who appeared in their first Final last season, have yet to win this competition and it's one blight on an otherwise impressive list of honours that they would dearly like to remove. Their first leg trip to Port Vale was by no means easy but a goal from Frank Stapleton gave them a 1-0 lead which they will surely improve upon at Old Trafford.

United's visit attracted a crowd of 19,855 — Vale's best for very many years.

● Brentford also had a bumper attendance when Champions Liverpool went to Griffin Park. A crowd of 17,859 turned up to be treated to a vintage display by the famous Reds. Two goals from Ian Rush plus others from Michael Robinson and Graeme Souness pushed them into a 4-1 lead after Brentford had taken a shock early advantage.

Liverpool became the only club to win the Milk Cup three seasons in succession when they defeated Manchester United in last season's Final. But they are determined to win it a fourth time.

'The Milk Cup is a highly prestigious competition,' maintains skipper Graeme Souness. 'Of course we're going for a fourth win. We owe it to our supporters who have followed us in hard times on Merseyside.'

● Several small clubs did well enough in the first leg to attract what they expect to be their highest attendances of the season for the returns. Third Division Preston defeated Wolves 3-2 at Molineux and are confident of completing the job at Deepdale.

Preston manager Gordon Lee was a member of the Aston Villa side that defeated Rotherham in that first League Cup Final back in 1961 and he always rises to a challenge in this competition. At the start of the season he considered it was going to be a 'difficult' season for Preston.

And, after a brilliant start, they were beginning to wilt a little in the League. Their Molineux victory put new life into the side.

● Peterborough, the Fourth Division side who drew 0-0 at Stoke, are hopeful of victory when the sides meet at London Road.

● Plymouth Argyle will probably take consolation from the fact that they held mighty Arsenal to 1-1 at Home Park. They travelled to Highbury with little hope of winning the tie.

● Arsenal is another big club that has yet to win the Milk Cup. They were beaten in successive Finals in 1968 and 1969 — losing to Third Division Swindon in the latter — and have never since even managed to make the Final.

A look at some of the crowd figures in the first leg matches must have convinced League officials of the wisdom of using a 'seeding' system in the draw for the first time. Though the situation goes into reverse in the case of a club like Crewe — who could hardly expect to have the fans in ecstasies when kicking-off 8-1 down — in the majority of ties it made sound economic sense.

Town Focus



When David Pleat took over as Luton manager early in 1978, his first priority was to rebuild the team he inherited. After signing Mark Aizlewood from Newport County and Steve Sherlock from Manchester City, the manager persuaded Swindon Town's David Moss to realise his future was at Kenilworth Road.

It turned out to be a very shrewd signing because, in addition to his potential as a goalscorer, David is also the best crosser of the ball in the First Division. He is also well on the way to scoring his 200th goal at senior level — statistics which prove his value to Luton Town.

FOOTBALL LEAGUE

	71-72	72-73	73-74	74-75	75-76	76-77	77-78	78-79	79-80	80-81	81-82	82-83	83-84	Total
Aldershot				2(1p)	2(1)									4(2)
Arsenal												2(2)	1	3(2)
Aston Villa												2(2)		3(4)
Barnsley		1(1)	2(1)								2			2
Birmingham					1			1	2(1p)			2(1)		4(2)
Blackburn														6(2)
Blackpool		1	2							2	1(1)			3
Bolton														5(1)
Bournemouth				2(1p)										2(1)
Bradford City							2							2
Brighton		1 + s(1)	2	2(1p)	2	1 + s(1)		2(1)				2(1)		10 + 2s(5)
Bristol City										2(1)				4(1)
Bristol Rovers			2					2(1)	2(2p)	2(1)				6(4)
Burnley		1						2(1)	1					3
Bury				2	1 + s	2	2							7 + 1s
Cambridge							2(1)	2	2(2p)	2(1)	2			10(4)
Cardiff		1	2		1 + s			1(2)	2(1)	2(1)	2			11 + 1s(4)
Cardiff City		1(1)	2				2(1)							5(2)
Charlton	s							1(1)	2(1p)		1			6 + 1s(3)
Chelsea				2(1)					2(1)					5(2)
Chesham					1(1)	2(2)	2			2(1)	1			5(3)
Chesham					2	2	1	2						7
Chesterfield					2	2	2	2						6(3)
Colchester				2(3pp)								2		2
Coventry														11(3)
Crystal Palace			2	2	2	2(1)	2				2(2)			4(2)
Derby										2(1)	2(1)			2
Everton												2		2(1)
Exeter							2(1)							6(4)
Fulham			2					2	2(4p)					7(4)
Gillingham				1	2(1p)	2(1)	2(2)							10(1)
Grimsby				2	2	2				2	2(1)			4
Hallifax				2	2									5
Hareford					1		2							2(1)
Huddersfield				2(1)										2 + 2s
Hull	s	s	2									2		3(1)
Ipswich														6(3)
Lincoln						2(1)	1							2(1)
Leicester								1	2(2)		2		1(1)	2 + 1s
Liverpool												2(1)		1
Luton			s	2										2
Man City												1		4
Man Utd												1	1	2
Mansfield							2							2 + 1s
Middlesbrough	s		2											5(4)
Millwall				2	1			2(4)						7(2)
Newcastle						2(1)		2	2(1)	2	1(1)			2(1)
Northampton														5
Norwich												2	2	1
Nottingham F		1	2					1(1)	2	2				6
Notts County			2(1)					2(2)	2(1)	2	2(2)	2(1)		9(3)
Oldham								2(2)	2(1)	2				8(5)
Orient	1		1 + s(1)					1	2(2p)	2	2(1)			9 + 1s(4)
Oxford		1	2(1)											7(4)
Peterborough				2	1	2	2(3)							7
Plymouth				2(2)		2	2(1)							4(3)
Portsmouth		s	2			1	2(2)							5 + 1s(2)
Port Vale				2(2)	1	2	2							7(2)
Preston		1 + s	2(1)	1	1	2	2	1 + s(1)	2(1p)	1(2)	1(1)			13 + 2s(5)
QPR									1	2(1)				4(2)
Reading					2(2)		2(1)							2(2)
Rotherham					2(1p)	2	2(1)				2			8(2)
Sheffield Utd								2						2
Sheffield Wed		1(1)	2(1)		2	2(1)	2			2(2)	1(1)			12(6)
Shrewsbury					2	2	2(1)			2	2	2(1)		12(2)
Southampton												2		2
Southend				1	2									3
Stoke								1				2		3
Sunderland		1	1					1	2(2)	2(1)		2(1)	1	8(3)
Swansea									2(2)					2
Tottenham														1
Tranmere				2		2	2							6
Walsall				1(1)	1(1)	2	2(1)							6(3)
Watford	1			1 + s					2	2	2(2)	2		10 + 1s(2)
WBA									1	2	2(3)	2		7(3)
West Ham Utd			1											1(1)
Wolves														15(6)
Wrexham														2(3)
York														
	2 + 3s	11 + 5s	39 + 1s	40 + 1s	37 + 2s	43 + 1s	45	29 + 1s	40	41	36	39	7	408 + 14s
	(4)	(6)	(6)	(14)	(6)	(14)	(16)	(13)	(24)	(16)	(15)	(9)	(2)	(139)

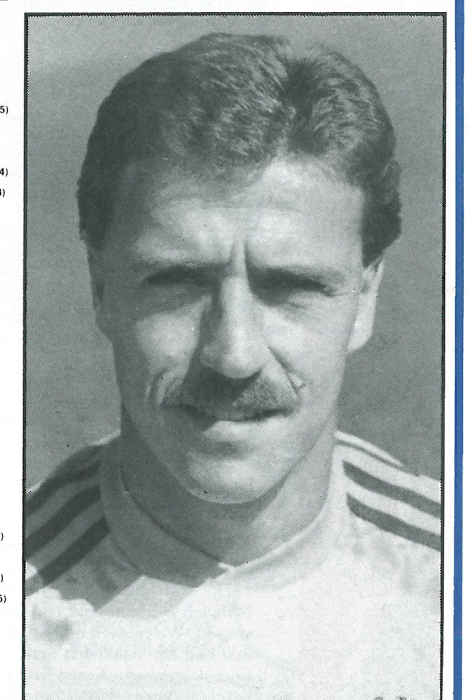
DAVID MOSS – CAREER RECORD

Statistics show season-by-season appearances against each opponent in every competition. 's' denotes he appeared as substitute. Goals are shown in brackets.

Up to and including 8th October.

Continued on page 30

DAVID MOSS — CAREER RECORD



Statistics show season-by-season appearances against each opponent in every competition. 's' denotes he appeared as substitute. Goals are shown in brackets.

Up to and including 8th October.

Continued on page 30

Town Focus

FORUM

THEATRE
ADVANCE
BOX
OFFICE
HATFIELD
71217

REACH FOR THE STARS!
AND LET US HELP YOUR AUTUMN
ENTERTAINMENT OFF TO A FLYING START!

Oct 25	Derek Griffiths	26	Woody Herman Orchestra
30	Val Doonican	27	Russ Abbott's Madhouse Show
Nov 11	Kelly Monteith	Dec 4	Mary O'Hara
18	The Ted Heath Orchestra	9	Syd Lawrence Orchestra
19	Lindisfarne	11	Des O'Connor
25	Boys of the Lough	16	Blaster Bates



GARY PARKER

NORWICH 2 LUTON 1

Team: North (M), Davies, North (S), Thomas, Petts, Parker, Driscoll, Breacker, McEvoy, Stein, McConville.

This was a disappointing result in the Eastern Junior Floodlit Cup because we felt we deserved something more for our efforts.

In the first minute the referee awarded us a penalty, then after consulting the linesman changed his mind to a free-kick outside the box.

The first half was the best we have played against Norwich including our two Youth Cup semi-finals last season. We created more chances than they did in the first half, but if you don't take them, you cannot expect to win games. Considering we played the game without Mark Watts, who had gone on tour with England Youth, and Ray Daniel who had gone on loan to Gillingham we were reasonably happy with the performance at half-time.

Unfortunately, we went to sleep for the first five minutes of the second half and allowed them to have a free header in the box to go into the lead. They had a few chances around this period during their best spell, and went on to score a second to seemingly put the game beyond us.

However, eight minutes later, Gary Parker scored with a tremendous shot to give us hope. From then until the end of the game they were doing the defending. Our luck deserted us because Mark Stein managed to hit the bar and side netting with two chances.

LUTON 4 READING 1

Team: Findlay, North (S), Goodyear, Saxby, Johnson, Parker, Bunn, Antic, Aylott, Stein (B), Watts. Sub: North (M).

With reinforcements from the first team in Brian Stein and Frankie Bunn, Luton still found it difficult to break down a stubborn Reading team who scored the opening goal ten minutes before half-time.

The Hatters were stung into action and Trevor Aylott headed in a Mark Watts cross for a quick equaliser with Watts scoring from close range following a fine individual run.



MARK WATTS

In the second half, Luton swamped their opponents and two further goals were scored both from marvellous centres by Gary Parker. The third goal was a Parker cross to the far post which Watts swept in for his second goal of the game. Another Parker cross was gratefully knocked in by Brian Stein to complete the scoring for an emphatic 4-1 victory.

It is pleasing to see young Parker following in David Moss's footsteps. Both have the ability to pick out people when crossing a ball on the run into a crowded goalmouth — a rare ability.

LEICESTER 0 LUTON 1

Team: Findlay, Coyle, Thomas, Breacker, Saxby, Goodyear, Parker, North (M), Aylott, McEvoy (McConville) Antic.

Filbert Street continued to be a happy hunting ground for the reserves following our first team success a week earlier. After a shaky start, Town settled down to play some attractive football and it came as no surprise when, following good work by big Trevor Aylott, Raddy Antic scored his first headed goal for the club to give us a half-time lead.

Although Leicester played some good football, Town issued a number of chances to seal the match when any one of six players could have scored on different occasions.

However, we won, but a more composed and controlled mind has to be used by younger players who often squander scoring chances by snatching too hurriedly at their opportunities.

Young Ricky McEvoy, our newest apprentice professional, made his debut but came off just before half-time with blistered feet while wearing brand new boots.

The lesson to be learned is that you wear in your new boots for 20 minutes at a time round the house or training before using them in a match.

To help prevent trouble, put vaseline over your football socks, especially the toes, the sole of your foot and heel, the major trouble spots.

WAS YOURS AN INSIDE JOB?

GLAZING REPAIRS & GLASS SUPPLIES
PATIO DOOR & WINDOW INSTALLATIONS
DOUBLE GLAZING (SECONDARY AND SEALED UNITS)
INTERIOR AND EXTERIOR DECORATORS

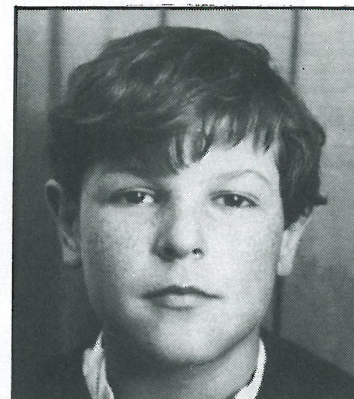
For Domestic and Commercial enquiries contact Luton 53025/597505

sapsworth
GLAZING & DECORATING
J. Sapsworth Limited
92 Marsh Road, Luton, Bedfordshire LU3 2NL
Telephone: Luton (0582) 53025/597505

junior hatters

JUNIOR HATTERS SPONSORED BY THE EVENING POST- AND CHILTERN RADIO

THE MASCOT



MICHAEL BRENNAN

A special welcome tonight to the lucky 200 who are joining us tonight in the Junior Hatters enclosure as winners of the Unigate Dairies Milk Cup competition run in the 'Evening Post' and over the air on Chiltern Radio. We congratulate the winners on their success and hope they enjoy tonight's match.

MASCOT

MICHAEL BRENNAN of Williton Road, Luton. He is aged 12 and attends Ashcroft High School, Luton. He plays football for St Josephs FC and the school. His interests are rugby, football, cricket, athletics and cross-country.

ESCORTS

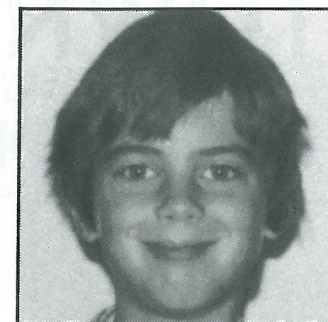
KELVIN RIPLEY of Aylesbury. Kelvin is nine and attends Stone C of E Combined. His interests are mostly sports, especially football, cricket and athletics. He is a member of the cubs and plays football for his school team.

NICHOLAS BANDY of Dunstable, Nicholas is 11 and attends Streetfield Middle School, Dunstable and his interests are football, tennis and fishing. He plays football for his school third year team.

NEIL HOLLOWAY of Hatfield. Neil is 13 and attends Onslow School and his interests are pop music, football, golf and fishing.

PAUL FISHER of Dunstable. Paul is aged 13 and attends Northfields Upper School. His interests are football, athletics, fishing, rugby, badminton, table tennis and squash. He plays football for his school team.

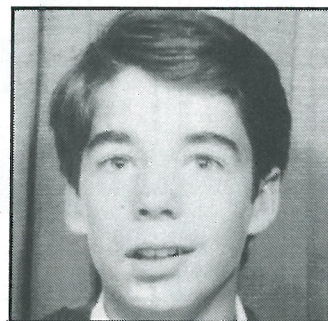
THE ESCORTS



KELVIN RIPLEY



NICHOLAS BANDY



NEIL HOLLOWAY



PAUL FISHER

NEWSHOUND SAYS

READ THE
**JUNIOR
HATTERS
COLUMN**

EVERY TUESDAY IN THE

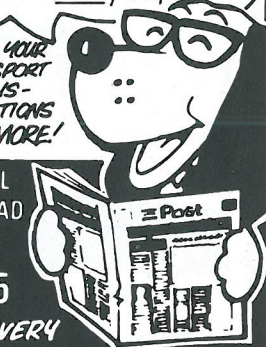
EVENING Post

Your Daily Paper!

PLUS ALL YOUR
NEWS - SPORT
CARTOONS -
COMPETITIONS
& MUCH MORE!

Tel HEMEL
HEMPSTEAD
42277
ext 205

FOR DELIVERY



TUNE IN TO

378
362

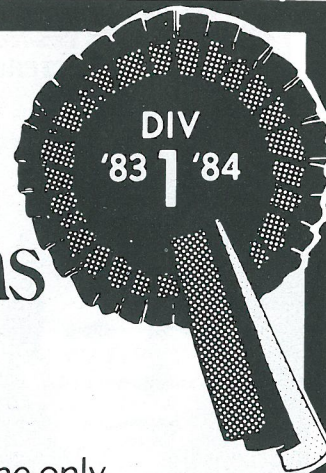
**Chiltern
Radio**

EVERY SATURDAY
MORNING

Be in the Top League this season with

LUTON TOWN

and Wallspan Bedrooms



The only place to go for real fitted Bedroom Furniture

You can see the full range of Wallspan luxury fitted bedrooms on display at your local Wallspan Showroom. So don't take our word call in and check the quality and price for yourself. We have been designing and manufacturing furniture for over 20 years. After all, when you are spending between £400 and £1,400 we think you should see what you are getting before you buy and not place an order from a pretty picture or model.



You know the score with Wallspan

- ★ FREE INSTALLATION
- ★ FREE HOME PLANNING
- ★ WIDE CHOICE OF FINISHES
- ★ CREDIT FACILITIES (WRITTEN DETAILS ON REQUEST)

Come and see us today

**Unit 174, Bute St, Arndale Centre, Luton.
Tel: Luton 23015**

Head Office and Showroom, Maulden Rd, Flitwick, Beds. Tel: 716161
59 Midland Rd, Bedford. Tel: 211327
18 Market Place, Stevenage, Herts. Tel: 724853

Wallspan Bedrooms

SHOWROOMS THROUGHOUT THE UK



Action

EVERTON 0 LUTON TOWN 1

Thanks Paul . . . a goal 14 minutes from the end by Paul Walsh gave us a fine 1-0 victory against Everton at Goodison Park a week last Saturday. Paul is seen here pushing the ball past Neville Southall.



UNRIVALLED FOOTBALL COVERAGE

EXCLUSIVE
COLUMN
by
DAVID
PLEAT

HATTERS
REPORTS
by
BRIAN
SWAIN

LOCAL
LEAGUES
by
ERIC
NORRIS

LUTON TOWN PICTURES BY MARK RICHARDS

IN THE **LUTON NEWS** THURSDAY 12p

READERS LETTERS

Dear Sir, I would like to thank you on behalf of the players and officials for your help and kindness, without which our tour of Germany would not have been possible.

This was our third trip abroad and a most memorable one for all concerned. The 3RD Royal Tank Regiment were our hosts and, as always, their hospitality was second to none. The boys were magnificent in every way, a credit to themselves, their parents, Milton Keynes and country.

Six games were played over 12 days. The team won five and lost one (to the 3RD Royal Tank Regiment), a fine achievement by any standards. We have been invited back next year (August) to take part in an International Youth Tournament, in which teams from eight different countries will be taking part. The invitation has been accepted and the 3RD Royal Tank Regiment has agreed to be our hosts again.

During the 13 days abroad, the party visited various parts of Germany, Holland and Belgium. They were invited to the homes of German families, and guests of Schloss Neu Haus (German 3RD Division Side) at two of their league games. Wherever the team went they made friends and left a good impression behind.

Please accept our sincere thanks we are grateful and do appreciate the

help you gave us. We did not let you down in anyway, we showed our friends in Europe that the 'British Youth' are still tops.

Joe Joseph
(Tour Manager)

Dear Sir, Last month while the ship was away in the Baltic Sea, we visited Copenhagen where I met a Swedish friend. He was born in South Africa and now lives in Sweden although he hasn't been to England, supports Luton Town.

After a long chat together, I gave him my Barnsley football shirt which, in return, he sent me a football shirt of the team he plays for (at a considerable cost by Air Mail).

What I would like to do if possible, is send him an autographed programme or something. I know it would mean a lot to him as he already has a Luton (Bedford Trucks) shirt and several paper cuttings.

Mem' Fort RM
HMS Fawn
BFPO Ships
London

Dear Mr Tomlins, Just a few lines to thank you once again for the effort you took to make our visit to Luton FC so enjoyable.

It really was very interesting and the children were really thrilled by meeting your kind team members who were so considerate in giving up their time to visit us in the Joe Payne Lounge.

They were also very impressed with the opportunity given to visit the dressing and treatment rooms and especially with the wonderful experience of going onto the pitch, just like the real thing!

Your thoughtfulness in giving each child personally a poster really was generous and a delightful finishing touch.

I feel sure you will have sown the seeds to produce future Luton Town fans.

Once again our sincere thanks and best wishes for the future of the club.

Enid Young
Ursula Taylor Lower School
High Street
Clapham

Dear Mr Pleat, I am writing to say that you must be very pleased with your side and hope that you can keep it up throughout the season. I hope you will write back to me.

Richard Lavington
The Stores
Uley
Dursley

Dear Sir, I am writing in the hope that you can find a small space for this plea in one of the forthcoming issues of your matchday magazine.

I am a keen collector of Coventry City home and away programmes, and my 1957-58 to date collection is nearing completion. However, I have tried for over 15 years to obtain a copy of the programme issued for the second round League Cup-tie between Luton and Coventry City played at Kenilworth Road on September 25th 1963. I would be extremely grateful if any of your readers who have a spare copy would contact me. I am prepared to pay a good price or exchange a good number of other programmes for a copy.

Paul R. Howard
109 Nuffield Road
Courthouse Green
Coventry CV6 7HU

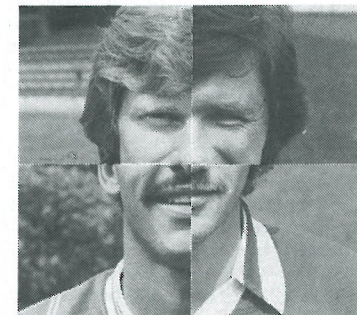
Competitions

AWAYAGAME – AWAYAGAME

The two leaders with five points each after correctly forecasting the points we won at Everton are: Merilyn Keys from Bletchley and P. Bartlett from Biggleswade.

Next Saturday's match at Liverpool sees the majority expecting Liverpool to clinch victory whilst a few are hopeful of the Town achieving the points.

NAME THE FACES

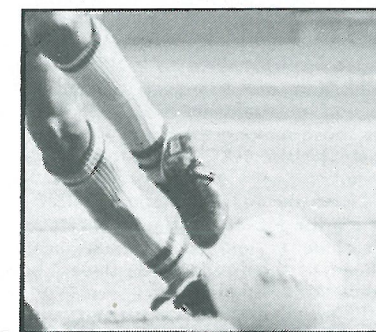


Our photo caption shows three players' heads mixed up. Again, all you have to do is name the three players and their current club.

Write your answers on a postcard with your name and address and send your entry to Luton Town Phototeasers, Luton Town Football Club Matchday Magazine, 70-72 Kenilworth Road, Luton.

NAME THE STAR

The 'Name The Star' competition continues from our Wolverhampton, Aston Villa and Southampton Matchday Magazine. This is a continuing competition when we will add a small proportion of the body of a famous player inviting you to guess the player's identity. As the details increase so the prize will diminish. Send your entries to: 'Name The Star' Competition, Luton Town Football Club Matchday Magazine, 70-72 Kenilworth Road, Luton.



CLUB '82

Mr P. J. Sullivan, Tricentral Trading Ltd
Kings Road, Flitwick, Beds.
Tel: 95-712121.

J. Fedigan, Adriatic Enterprises Ltd
20 St. Margarets Way, Leicester.
Tel: Leicester 0533-26022/3

Mr D. Newton, Lormane Agents Ltd
72-76 Union Street, Dunstable, Beds.
Tel: 660272.

Mr J. Mead, Pilcourt Ltd
151 Bearton Road, Hitchin, Herts.
Tel: 0462-4367.

Mr G. White, White's Stationers Ltd
57 High Street, Woburn Sands
Milton Keynes MK17 8QY
Tel: 0908-583291.

Mr J. Peters, Avica House
346 High Street, Berkhamstead.
Tel: 75977.

Mr D. Keech, D. W. King & Co
Argyll Works, Stevenage, Herts.
Tel: 0438-4400.

Mr D. Ludlow, Ludlows of Luton Ltd
Thistle Road, Windmill Trading Estate,
Luton, Beds, LU1 3XJ.
Tel: Luton 29883/4.

Mr F. Ludlow, Frank Ludlow Ltd
71 Windmill Road,
Luton, Beds.
Tel: Luton 414441.

Mr J. Boylen, Berkeley Associates
Printing Specialists, PO Box 332, Newton
Longville
Milton Keynes MK1 7QA
Tel: 0908-75918.

Mr D. W. Graves, Westmount
Gravel Path, Berkhamstead, Herts.
Tel: 04427-75977.

Mr F. W. Pearce, F. W. Pearce (Builders) Ltd
1a Wilsden Avenue, Luton, Beds.
Tel: 24163.

Mr A. D. Lambert, Broad Street Print
9 Broad Street, Hemel Hempstead, Herts.
Tel: 82-65490.

Mr M. Manning, Beard & Manning Ltd
152 Leagrave Road, Luton, Beds.
Tel: 22538.

Mr T. Bailey, Wallspan Bedrooms Ltd
Industrail Estate, Maulden Road, Flitwick, Beds.
Tel: 9571-3621.

Mr D. Rand, David Rand & Co Ltd
51 Radlett Road, Frogmore, St. Albans, Herts.
Tel: 98-72492.

Mr R. A. Finch, Computer Technology Ltd
Eaton Road, Hemel Hempstead, Herts.
Tel: 82-3272.

Mr E. Elliott, Emeralla
Market Square, Biggleswade, Beds.
Tel: 0767-313273.

Mr J. Waller, Lathom & Co
King Street, Luton, Beds.
Tel: 29221.

Mr E. Edwards, County Motors Ltd
Unit 1, 166 Camford Way, Sundon Park, Luton

Building houses to make homes in

at

Bramingham Road, Luton
Parkside, Houghton Regis
Wallington Rise, Baldock
Two Mile Ash, Milton Keynes
Church Green, Bletchley
Kimbolton Gardens, Bedford
Merton Court, Bedford
Millfield, Bedford
Padbury House, Bedford

Future development: Astra Court, Luton



Barratt

LUTON LTD

Telephone: Luton (0582) 422771

NEWSDESK... NEWSDESK... NEWSDESK...

MAN OF THE MATCH AWARD

Remdex-Bradley Reprographics Limited, our match sponsors this evening, have kindly donated a Konica AF3 fully automatic camera to be awarded to the player considered to be the Man of the Match in tonight's tie.

The winner's name will be announced in our matchday magazine for the home game against Birmingham City on November 12th.

AWAYDAY TRAVEL

On Saturday, we return to Merseyside for the second time this month when we travel to Anfield to tackle Liverpool. Many of our fans will take advantage of our exclusive Travel Club but, for those making their own way, this route by the RAC may prove to be useful.

Leave the M1 at junction 19 (M6). Leave the M6 at junction 21A (M62). Continue to end of M62 and keep ahead at the traffic lights under the flyover onto Edge Lane.

Follow 'City Centre' signs and, after two miles, pass Edge Lane bus garage on the left. Continue ahead for a quarter of a mile to the lights, where you go right onto Holt Road.

In half a mile go right at traffic lights onto Kensington. After 150 yards, turn left at the traffic lights and into Sheil Road. After half a mile continue into Belmont Road and, at the traffic lights in a quarter of a mile, into Oakfield Road.

After a quarter of a mile at junction with Walton Breck Road is Anfield Football Ground.

There is limited street parking near the ground.



GOING BANANAS!

Our public relations exercise takes Luton officials and players to many functions in and around the area as we attempt to meet our fans.

Ricky Hill and Kirk Stephens were invited to Tropicana Beach, formerly Sands, in Gordon Street, Luton, where Ricky posed for pictures with cabaret stars Bananarama.

MIKE'S ON THE MOVE

Our promotions manager Mike Hardwicke is on the move.

Readers of our matchday magazine will remember that Mike visited his daughter Sandra and his grandchildren in New South Wales, Australia, in November last year.

His family ties obviously became too hard to resist because Mike has accepted a job with Australia's leading club, St George Budapest.

Luton Town's association with that club will be strengthened even further when Mike arrives in Australia. Hatters fans will remember former striker Adrian Alston who is now coach with St George's.

In fact, Adrian's signing by Luton became part of the Guinness Book of Records because his transfer involved a round trip of 25,000 miles.

Mike leaves the club on November 1st and we welcome this opportunity of wishing him and his wife Brenda every success in their new future.

His contribution to the club during the last 12 years has been excellent when he and his lottery team have produced revenue essential to the club's coffers.

He leaves us with the knowledge that he has developed an expert backroom team who have enjoyed the fantastic success of the Magnificent Seven lotteries.

The directors and staff wish Mike every good fortune in Australia.

IF IT'S A DRAW

If both teams are level on goals at the end of 90 minutes in tonight's tie, an extra 30 minutes will be played.

If the aggregate scores are still level at the end of that period, the tie shall be decided by goals scored with those away from home counting as double.

In the event of both teams still being equal in that situation the tie will be decided by penalties.

CENTURY CLUB

Tonight we welcome the Millers to Kenilworth Road for the second leg of the Milk Cup Competition.

Members will recall the exciting match at Millmoor two seasons ago when the Town came away with a precious League point, thanks to a last minute penalty save by Alan Judge, to help to ensure our promotion to Division One.

Those of us who were there on that occasion enjoyed the warm hospitality afforded to us as did our youngsters who were guests of the Junior Millers.

A reminder to members of the annual general meeting which takes place on Thursday 10th November in the Century Club.

ROTHERHAM FLASHBACK

Tonight's tie sent Luton secretary John Wilkinson delving into his archives to find this reminder of our meeting against Rotherham at Kenilworth Road on January 23rd 1954.

We met the Millers at Second Division level when a crowd of 17,300 saw us draw 1-1 to keep us in eighth place behind Division leaders Leicester City.

NEXT APPEARANCE HERE

After tonight's tie, we are not at home at first team level until Birmingham City visit Kenilworth Road for the first of two successive home games on November 12th. Tickets for that game will be available in the commercial offices next Monday.

REFEREE

Keren Barrat commenced refereeing in 1968 and progressed via the West Midlands League to the Football League List. Has refereed various local Cup Finals, including the West Midlands League Premier Cup Final in 1980.

A married man, with two daughters, he is a maintenance machine tool foreman. Has been Secretary of Coventry Referees' Association for 7 years, and is also Secretary of a football competition organised for Referees' Association teams. For 2½ seasons was an amateur goalkeeper with Coventry City.

LUTON TOWN

Shirts White
Knickers Black
Stockings Black with White Tops

Goal: Stretton
3: Jones (Right Back)

4: Morton (Right Half)

7: Davies (Outside Right)

8: Turner (Inside Right)

Referee: Mr. G. PANKHURST (Warwick)

11: Wilson (Outside Left)

10: Churms (Inside Left)

6: Williams (Left Half)

3: Johnson (Left Back)

5: Owen (Centre Half)

9: Burke (Centre)

2: Noble (Centre Half)

1: Marshall (Right Half)

4: Selkirk (Right Back)

Goal: Quairney

Kick - Off 2.45 p.m.

Shirts Red, White Sleeves
Knickers White
Stockings Red and White Hoops

Goal: Quairney

Kick - Off 2.45 p.m.

Shirts Red, White Sleeves
Knickers White
Stockings Red and White Hoops

Goal: Quairney

Kick - Off 2.45 p.m.

Shirts Red, White Sleeves
Knickers White
Stockings Red and White Hoops

THE LOCAL TASTE AND HOW TO SATISFY IT

We're very definite about our taste in beer around here. A clear light pint is what we look for; with a good, clean smack of malt and hops.

And there's only one name that really satisfies the local taste - BB. The light beer first brewed in Luton during the darkest days of the War by J. W. Green.

Only the finest hops and good, ripe barley go into the making. Then the brew is matured to exactly the right degree to give you a bright refreshing pint with a sound, full flavour.



WHITBREAD

American servicemen in local wartime bases declared that BB, chilled, was the nearest taste to Stateside draught.

It went down well when Syd Owen ruled the Hatters.

And it's been going down well ever since. Because BB is brewed with a proper respect for quality. To keep up the traditions we value round here.



Graham Ford

Your Comprehensive Builders Merchants



Depots at:
LUTON — KINGSWAY 31199
DUNSTABLE — BEALE STREET 603111
LEIGHTON BUZZARD — LEIGHTON ROAD 373486



Falcon

WE
KNOW
WHERE
WE'RE
GOING.

FALCON HOLIDAYS LTD

Take no chances book with a bonded A.B.T.A. member. Phone now for a copy of our latest brochure

FALCON HOLIDAYS LTD
190 Campden Hill Road
London W8
Telephone: 01 221 6298



Who's got the bottle to get through to the next round?

Sponsored by the National Dairy Council.

Fresh milk's gotta lotta bottle

HATTERS WHO'S WHO

The fifth in Tony Pullein's series on former Luton players. This week: **PETER ANDERSON**.

Peter Anderson gave many superlative performances in midfield for the Hatters. Yet it can be argued that his greatest contribution to football in Luton was his decision to leave Kenilworth Road!

The club faced closure in December 1975 when the bank refused to extend credit facilities. Denis Mortimer, then the club's financial director, explained to supporters that 'unless the club can obtain financial resources within days it will have to cease operating.'

It was at that crucial moment that the Belgian club Royal Antwerp showed an interest in Peter. In view of the circumstances, negotiations were speeded up and, following agreement on a fee in the region of £60,000, Peter left the club to continue his career on the Continent.

'The money we received from Peter's transfer gave the club the breathing space it needed to sort out the very serious financial problems of the time, said Mr Mortimer.

'I didn't particularly want to leave Luton,' said Peter. 'But at least I had some satisfaction from the fact that, by joining Antwerp, I had played a part in keeping Luton Town alive.'

Peter was playing amateur football for Hendon when he was recommended to the Hatters. He joined us as a professional in February 1971 and, only two days later, he was playing in our Second Division side at Portsmouth.

PERMANENT FIXTURE

He took no time in adapting to League football and remained a fixture in the side for the remainder of the season.

Peter's main job was to create attacking situations but, though he was not expected to score many goals, he finished top scorer in 1971-72.

'I scored only 10 goals,' he recalled. 'But it was a time when we were struggling a bit in front of goal.'

The Hatters made a very poor start, failing to win any of our opening seven League games. No-one was displaying any sort of confidence in the opponents' penalty box. And it was a game at Millwall in which Peter began to feel he would have to try and do something about it.

'We went one goal down in the first minute at Millwall and the situation was already beginning to look desperate,' he said. 'Then I scored to equalise but we later fell behind again. It was quite late in the game when I scored again. I think it was about the only time I ever scored twice in a game!'

TURNING POINT

That proved a turning point. We won our next match and after that rose steadily up the table to finish about half way.

Another memorable season at Luton for Peter was 1973-74 when we regained our place in the First Division. Again, he was quickly in on the act and, in fact, again scored twice in a 6-1 win over Carlisle at Kenilworth Road.

'We made a disastrous start by losing 4-0 at Nottingham Forest and we were determined to make amends in the next game. It was Carlisle's misfortune to catch us in a killer mood,' he remembered.

Peter finished that season second-highest scorer with 13 in League and Cup. A 1-1 draw at West Bromwich in our penultimate match clinched promotion.

But life in the First Division was difficult at first. With only one win in our opening 21 games we seemed destined for quick relegation. Then came that remarkable finish.

'The spirit was tremendous at the end and it seemed we might just be able to survive,' said Peter.

INDIVIDUAL EFFORT

Another individual effort on his part kept hopes glowing. Peter scored both goals in a 2-1 win over Everton at Kenilworth Road almost at the end of the season.

We then beat Leicester 3-0 and scored a fabulous 4-1 win at Birmingham. The Hatters were held 1-1 at home by Manchester City on the last day and that lifted us out of the bottom three places. But Spurs, a point ahead, still had one game to play. They beat Leeds 4-2 to send us down.

'That was the turning point for the club, I suppose,' shrugged Peter. 'I often wonder what might have been had we stayed in the First Division. Only a few months later the players were shocked when we heard of the grave financial difficulties.'

Peter remained with Antwerp for a couple of years and then went to America to play for Tampa Bay Rowdies. He came back to England in 1978 when Sheffield United paid £80,000 for him. Though he was the Blades' leading scorer, they were relegated from the Second Division.

Returning to the States, Peter played for San Diego Sockers and then re-joined Tampa Bay.

In December 1980 he took over as Millwall's player-manager when the club was in serious danger of relegation to the Fourth Division. He pulled them clear and the following season packed away his boots to concentrate solely upon managing. When the club hit another poor patch in November 1982 he left The Den.

So Peter's career has taken many twists and turns but he still looks upon his days with Luton as among his happiest. 'It was great to play in the First Division and there was usually something interesting going on when I was at Kenilworth Road.'

LEAGUE CAREER

		Apps	Gls
Luton Town	1970-71	13(1)	1
	1971-72	33(2)	10
	1972-73	34	1
	1973-74	41	11
	1974-75	40	6
	1975-76	17	5
Sheffield United Millwall	1978-79	28(2)	12
	1980-81	13	1
	1981-82	17(1)	3
		236(6)	50

By Tony Pullein



*Your local suppliers of
printed polythene & paper bags.
Short runs a speciality.*

Princess Packaging Ltd.

HEATHFIELD WORKS, LEYTON ROAD, HARPENDEN, HERTS.
AL5 2JB TEL. (05827)66806 OR 64431 (24 HR. SERVICE).

For all your
Floral arrangements contact:

INBLOOM
(Suppliers to Kenilworth Suite)
45 Latimer Road, Luton

Cleandustrial Services Ltd

The Professional Approach to
Your Cleaning Problems
84 Aldermans Hill N13
Official Cleaning Contractors to
Luton Town FC
Telephone: 01-882 4626

**NORTH LUTON
INDUSTRIAL ESTATE**

**NEW FACTORIES/
WAREHOUSES AVAILABLE**

FULLER PEISER **St Quintin**
01-499 8931 01-236 4040

B. DOHERTY
SKIPHIRE

**34 MOUNT PLEASANT ROAD
LUTON**
Telephone: 54633 and 54799

John's



Journal

JOHN WILKINSON - CLUB SECRETARY

Cliff Bygraves' name may not mean anything to our supporters, but to us on the administration side of the club he is well known. Cliff is one of the senior partners of Arthur Young, McClelland, Moores and Co, the club's auditors.

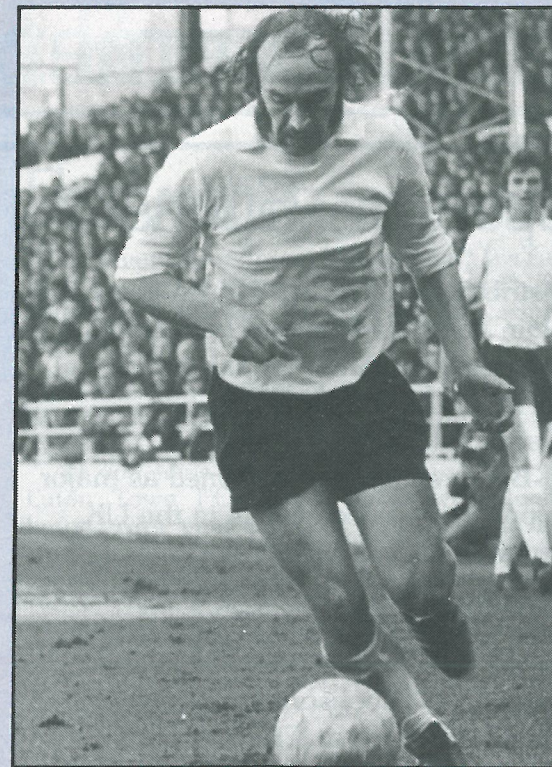
Our chairman, Denis Mortimer, informed me last week that Cliff has been made a vice-president of Luton Town.

Knowing some of the problems he encountered over the years and the efficient way he and his staff have overcome them, it is an honour he thoroughly deserves. Well done Cliff.

Tonight, we have the second leg of the Milk Cup and, having a goal lead from the first leg, we hope to maintain that advantage and go through to the third round. Over the years fortune has played some funny tricks on Rotherham United, none more so than in 1955 when, by winning eight of the last nine games and finally beating Liverpool 6-1, they finished level on points at the top of Division Two with Birmingham City and ourselves.

Yet, despite scoring more goals than their rivals, they missed a First Division place on goal average. Rotherham, in company with other clubs in the lower divisions rely heavily on finding their own players. Among the best known have been Danny Williams, a stalwart defender who made 459 League appearances between 1946-1960, and Wally Ardron whose 38 League goals in 1946-47 are still a Rotherham record.

They also have the distinction of being runners-up in the Football League Cup (now the Milk Cup) in season 1960-61.



MEMORY LANE

Harry Haslam, then Luton manager, signed Rodney Fern from Leicester City for a fee of around £30,000. Although he always gave good performances, he never really lived up to the form he produced for the City. He joined them in December 1966 from the junior club Measham.

In four seasons at Filbert Street he made 133 appearances and scored 31 goals. It was those figures which made Harry persuade him to sign for the Town. In June 1975 he was transferred to Chesterfield where he spent three seasons. In that time he made 150 appearances and scored 54 goals.

He then moved on to Rotherham United to join another former Luton player John Seasman. After another 65 appearances and 16 goals he has now retired from the game and keeps a public house near his home town of Burton.

Anglia Television

Proud to serve
the
East of England.



Sponsor... Sponsor... Sponsor... Sponsor...

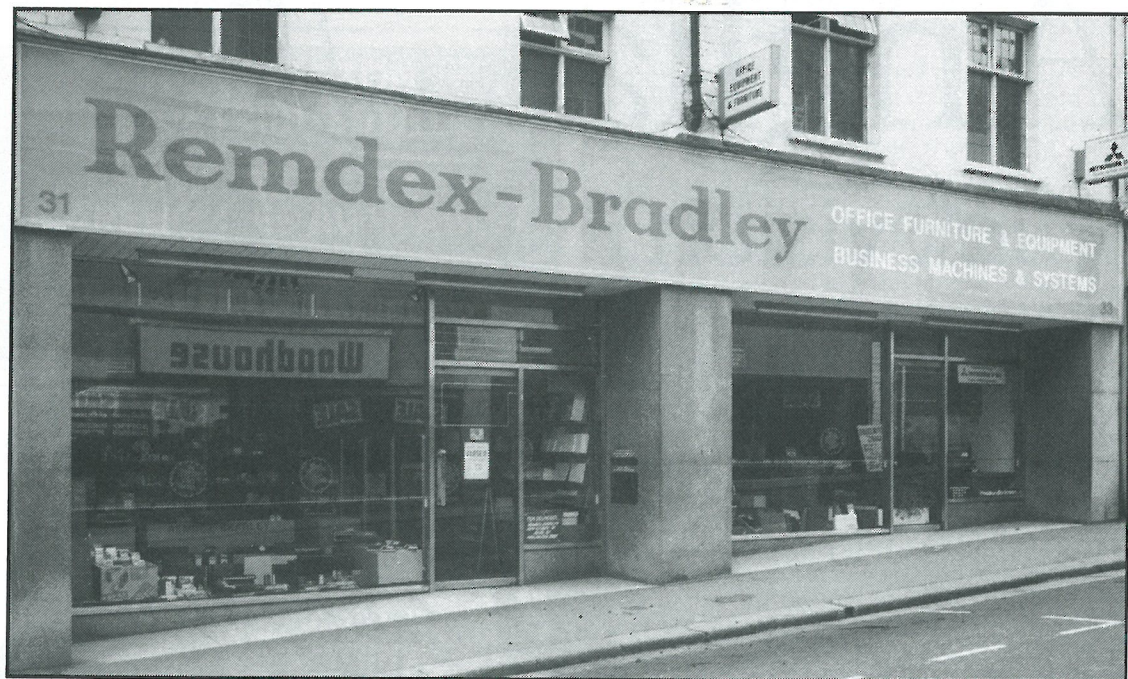
Tonight's match sponsor is Remdex-Bradley Reprographics Limited, a member of the Remdex-Bradley Group, the well-known office equipment distributors with headquarters in Wellington Street, Luton.

Remdex-Bradley are the leading suppliers of office equipment machines in the Home Counties and celebrate their 21st anniversary during 1983. Since the company was formed in 1962, branches have been opened at Bedford and Northampton and their present chairman, Bill Daley, lives in Harpenden.

Remdex-Bradley Reprographics was formed in 1975 as exclusive

distributors for the U-BIX range of plain paper copiers and has gained an enviable reputation for sales and service in South Beds and Hertfordshire.

U-BIX are not only renowned as major suppliers of office copiers in the UK, but are also well-known for their sponsorship of sporting events. In 1981 and 1982 U-BIX were Golden Sponsors of the Bob Hope British Golf Classic, and in 1983 sponsored the European Championships at Crystal Palace. Remdex-Bradley and U-BIX now combine in their first sponsorship at Kenilworth Road, and we wish them and their guests a most enjoyable evening with us.



Souvenirs

Started your Christmas shopping yet? We can help you solve many of your gift problems without you leaving the comfort and warmth of your home.

In the build-up to Christmas, we will provide you with details of our wide range of souvenirs which are obtainable on a mail order basis.

All you have to do is send your order to Luton Town FC, 70-72 Kenilworth Road, Luton, with your cheque, which should include postage and packing, and we'll send your order by return.

	Price	P&P
Scarves: Silk Luton Town FC	99p	18p
Scarves: Woollen Club Colours Printed	£1.50	28p
Scarves: Woollen Club Colours Named	£2	28p
Scarves: Woollen Jaquard	£2	28p
Flat Cap: Club Colours Crested	£1.75	22p
Bob Hat: Woollen Club Crested	£1.50	22p
Car Stickers: Round or Oblong	30p	SAE
Babies Bibs: Crested	£1	28p
Badges: Cloth Sew-On Crest	60p	SAE
Grip Bags: Navy/Orange Crested	£5.50	80p
Carrier Bags: Crested Plastic	6p	SAE
Teddy Bears: Orange/White 16" High	£4.50	45p
Dart Flights: Polyester Set of Three	50p	SAE
Football Official Souvenir Crested	£7.25	70p
Ladies Briefs: Crested	£1	16p
Key Rings: Club Crested	75p	16p
Key Ring: Cloth	75p	16p

Lotteries

We strongly believe that our lottery customers don't mind losing occasionally as long as they know who wins the large prizes regularly offered by us.

We publish a monthly result sheet giving the names of hundreds of big winners which also appears in the 'Evening Post-Echo'.

However, we appreciate that some people are still unaware of who has won what, and take this opportunity of providing details of the latest £1,000 prizes offered in Reach For The Stars, a new lottery recently launched.

With Christmas not too far away, we know

that everyone could find something useful to do with a nice windfall.

May we suggest you could benefit from one of our £1,000 prizes or, as an alternative, one of the smaller ones. It will cost you an outlay of only 25p.

At that price, can you afford to ignore the chance of winning £1,000.

These are our latest lucky winners.

Mr K. Worsfold, 116 Redbridge, Stantonbury, Milton Keynes; Mr R. Caplin, 33 Linden Close, Dunstable; Mrs Norris, 7 Bakewell Close, Luton; Mrs Baxter, 185 Wavell Close, Stewartby, Beds; Mr F. Swinbourne, 44 Hills Close, Great Linford, Milton Keynes.

Travel... Travel... Travel...



Are you travelling to
QPR ON 5th NOVEMBER

Why not take advantage of the facilities offered by our

TRAVEL CLUB

who can provide

COACH TRANSPORT TO LOFTUS ROAD

FOR ONLY £2.50.

Bookings are being accepted now in the Kenilworth Road Commercial Offices.

Travel in comfort with the Official Travel Club.

ROTHERHAM BETTER AWAY FROM HOME

Although Rotherham, on the face of it, have the odds heavily stacked against them tonight — as they try to pull back from a 2-3 deficit in the first leg of this Milk Cup-tie — manager George Kerr has been reminding his players that some of their best performances so far this season have been on opponents' grounds!

In the first round the Millers were held at home to a goalless draw by Fourth Division Hartlepool, but won the away leg 1-0.

And they were beaten only once in their opening three away League games, drawing at Southend (2-2), winning at Exeter (1-0) then going down at Bolton (0-2).

At Millmoor, on the other hand, they recently suffered a run of four consecutive defeats.

Mr Kerr, who took over from Emlyn Hughes last April, was unable to halt Rotherham's

dive towards the Third Division, after a two-year stay in Division Two. And, at the moment, his hopes of leading them quickly back to the higher section look rather slim. But, of course, there's a long way to go yet.

Following relegation Mr Kerr went back to his old club Grimsby to sign three new players — defenders Andy O'Dell and Phil Crosby, plus striker Kevin Kilmore. He also snapped up Burnley's experienced goalkeeper Alan Stevenson.

DISAPPOINTING OPENING

Following the Millers' disappointing opening to the season, Mr Kerr went into the market again to sign midfielder Mick Gooding, from Chesterfield, and striker Terry Donovan, from Burnley.

Donovan is cup-tied, having played for Burnley against

Crewe in the first round, so he will not be eligible for tonight's match. As Rotherham have sold strikers Ronnie Moore (to Charlton) and Joe McBride (Oldham), it looks pretty certain that their two front runners today will be former Hatter John Seasman and Kevin Kilmore.

Seasman started his career with Tranmere and was brought to Kenilworth Road by Harry Haslam who completed the transfer for £5,000 in 1974. John didn't really establish himself here, though, and in 1976 he moved on to Millwall for £10,000. He led the Lions' scoring list on two occasions and when he moved on to Rotherham in 1980 he commanded a £90,000 fee.

Kilmore won England youth honours in his Scunthorpe days and, after leading their scoring list with 17 goals in 1978-79, he was transferred to Grimsby for £60,000.

Although he scored 16 goals in his first campaign at Blundell Park, he later lost his touch and the move to

ROTHERHAM

Millmoor has given him the challenge he wanted. Kevin scored in each of his first three League appearances for the Millers and grabbed one of the goals in the first leg against us.

The midfield seems to be settling down with Mick Gooding, Mark Rhodes, Willie McEwan and Bobby Mitchell on parade.

SECOND SPELL

Gooding, who also scored against us at Millmoor and has scored in both rounds of the Milk Cup so far, is now in his second spell with Rotherham. He initially joined them from Bishop Auckland and made his League debut for them in 1979. Last season he was sold to Chesterfield but Rotherham resigned him shortly after the start of this season.

Rhodes was given his League baptism by Rotherham in 1975 and has now made well over 200 appearances for the club. When he lost his place last season, he spent loan periods with Darlington and Mansfield.

McEwan has played well over 300 games in the Scottish and Football Leagues, starting with Hibernian in 1969-70. After a brief stay with Blackpool in 1973, he moved on to Brighton and in 1974 he was transferred to Chesterfield. Further moves took him to Mansfield in 1976 and Peterborough a year later. Rotherham signed him in 1979.

Mitchell's first professional club was Sunderland but he got only rare opportunities with them. He joined Blackburn in 1976 and spent two years with them before

moving to Grimsby. Carlisle signed him during the 1982 close season and he was transferred to Rotherham towards the end of last season.

Andy O'Dell and Nigel Johnson have settled as the central defenders.

O'Dell served his apprenticeship with Grimsby and got his chance in their League eleven two seasons ago. Rotherham signed him this summer. Johnson is a Rotherham discovery who completed his apprenticeship at Millmoor and who made his League debut last season.

LEAGUE DEBUT

Right-back Gerry Forrest has been a fixture in the side since his debut in 1977 and he recorded his 250th League appearance for the club last season.

Phil Crosby, who plays on the opposite flank, is a former England youth international who grew up with Grimsby. He was introduced to their League team in 1979-80 and signed for Rotherham this summer.

Alan Stevenson ended an 11-year association with Burnley when he joined Rotherham during the recent close season. He began his career with Chesterfield and was transferred to Burnley for £50,000 in 1972. He was capped 11 times at England Under-23 level.

Rotherham created a piece of League Cup history, long before the competition was known as the Milk Cup. The Millers, in fact, played in the very first League Cup final in 1961.

In those days the final was.

played on a home-and-away basis and they set themselves up to collect the trophy when winning their home leg by 2-0 against Aston Villa. But Villa won the return 3-0 to take the Cup on aggregate score.

Another historical note to that final was that it is the only major English Cup Final that ever had to be held over until the following season! As the semi-finals were not completed until the May, the match was played at the beginning of the following season.

In recent times Rotherham's fortunes have fluctuated quite violently. They were relegated to the Fourth Division in 1973 because of inferior goal average to three other clubs who were level with them on points.

The following season they finished in the bottom half of the Fourth Division table but in 1975 they took third place to reclaim their Third Division status.

After a season of struggle against relegation, the Millers made a bold bid for promotion but, in 1976-77, they were denied a place in the top three on goal average.

Since then the Millers' form has been inconsistent. In 1977-78 they finished fifth from bottom, only narrowly avoiding relegation. And for the following two seasons they were usually found in the bottom half of the table.

Yet in 1981 they won the Third Division championship to return to the Second Division once more. Last season ended in relegation.

By TONY PULLEIN



Back row (left to right): Phil Henson (Player/Coach), Billy McEwan (Player/Coach), Nigel Johnson, John Green, Ray Mountford, Robert Mimms, Ronnie Moore, Phil Walker, George Kerr (Manager), Barry Claxton (Assistant Manager). Centre row: Gerry Forrest, Kevin Kilmore, John Seasman, Ian Alexander, Phil Crosby, Bobby Mitchell. Front row: Andy O'Dell, Mark Rhodes, John Durham, Paul Friar, Joe McBride.



EVERTON 0 LUTON TOWN 1

More action from our 1-0 victory at Everton a week last Saturday when a goal from Paul Walsh gave us three points.

On the move . . . Brian Stein attempts to win possession as he moves towards goal. Out-numbered . . . Ricky Hill finds himself in a lonely position as he attempts to beat Everton keeper Neville Southall.



LUTON'S FUTURE

In this latest reference to our proposed sports complex, we provide supporters with details of the engineering concept of the building.

The engineering concept has been developed to enhance the sense of 'occasion' within the main arena by creating an artificially lit totally enclosed environment. Spaces beneath the arena accommodate leisure and sport activities, which can then share support facilities, services and circulation space with the arena.

A large span roof covering a synthetic grass pitch within the arena floor will incorporate lighting, ventilation, acoustic treatment and communications, with access walkways for maintenance and future development of these systems.

Main support structure will be positioned at the four corners of the arena floor to reduce the roof span to a practical minimum, thereby effecting economies in the roof cost while maximising use of the corners of the building, and providing service routes to the roof space.

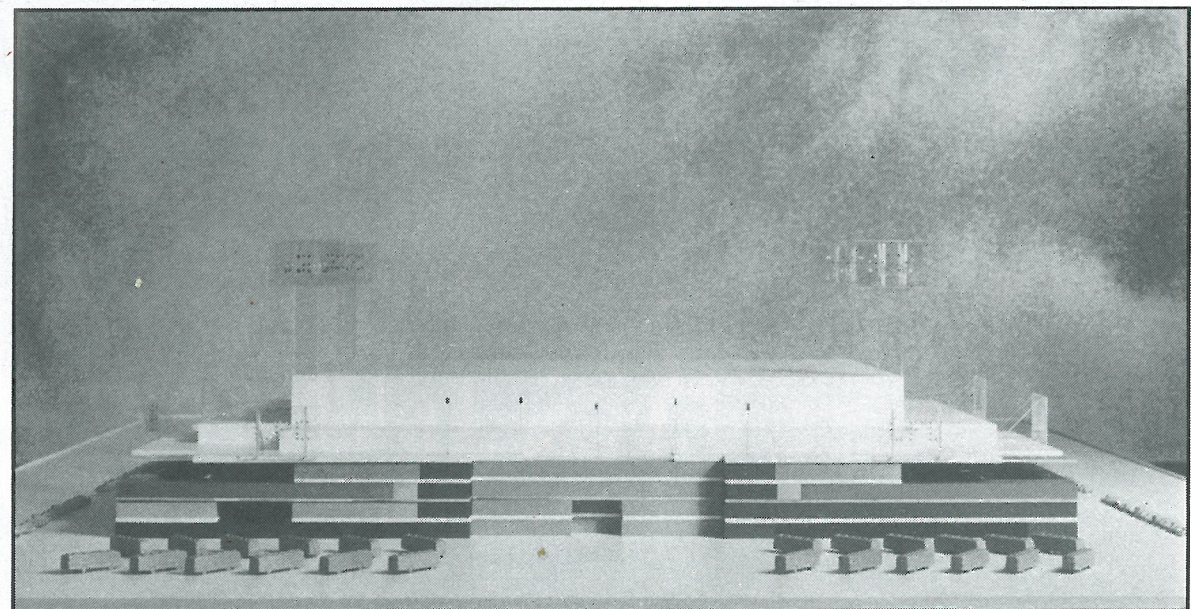
Terraced seating arranged in blocks along the pitch sides will allow full use to be made of modular components reducing cost and construction time. The support structure to this

seating imposes a discipline on the planning of the leisure, commercial and circulation spaces beneath while allowing sufficient flexibility for servicing and future change of use.

A mechanical ventilation system will circulate tempered air in the arena. This is supplemented by a natural extract at roof level. In winter conditions, the heated air will enhance radiant heating at high level. Leisure, participation and ancillary spaces will be mechanically or naturally ventilated and heated.

Lighting to the arena will be suitable for colour television broadcasting and have flexibility to cover a complete range of sports and stadium events which might use either part or all of the arena floor. Communications and public address systems provided for sports use are capable of extension and adaptation to a wide range of 'theatrical' uses.

Acoustic treatment of the arena will restrict reverberation and achieve reasonable sound insulation with adequate protection against excessive rain noise. For the participation and leisure space, adequate absorption to limit occupational noise levels, an effective public address system and sufficient sound separation between adjacent facilities are the basic criteria.



REPLAY IN COLOUR. . . REPLAY IN COLOUR



**EVERTON 0
LUTON TOWN 1**

We maintained our winning ways at Everton a week last Saturday, thanks to a goal from Paul Walsh in the 76th minute. This colour shot shows Wayne Turner about to attempt to find David Moss with a throw.

TOWN RECORD '83/84

Opponents	Result	Attendance	Points	Position	Sealey	Stephens	Turner	Horton	Elliott	Donaghy	Hill	Stein	Walsh	Bunn	Moss	Antic	Aylott	Own Goal
Goals Scored								1	1		2	4	5	2	3		3	1
1983																		
August																		
27 Arsenal	1-2	39,348	—	—	1	2	3	4	5	6	7	8	9	10	11	—		
31 Leicester City	3-0	11,929	3	—	1	2	3	4	5	6	7	8	9	10	11	—		
September																		
3 Sunderland	*4-0	10,346	6	5	1	2	3	4	5	6	7	8	9	10	11	—		
6 Norwich City	2-2	11,905	7	5	1	2	3	4	5	6	7	8	9	10	11	—		
10 Manchester United	0-2	41,013	7	8	1	2	3	4	5	6	7	8	9	10	11	—		
17 Wolverhampton W.	4-0	10,975	10	7	1	2	3	4	5	6	7	8	9	10	11	—		
24 Nottingham Forest	0-1	16,296	10	13	1	2	3	4	5	6	7	8	9	10	11	—		
October																		
1 Aston Villa	1-0	12,747	13	9	1	2	3	4	5	6	7	8	9	10	11	—		
4 Rotherham (MC2-1L)	3-2	4,035	—	—	1	2	3	4	5	6	7	8	9	10	11	—		
15 Everton	1-0	14,325	16	7	1	2	3	4	5	6	7	8	9	10	11	—		
22 Southampton	3-1	12,389	19	4	1	2	3	4	5	6	7	8	9	10	11	—		
25 Rotherham (MC2-2L)																		
29 Liverpool																		
November																		
5 Queens Park Rangers																		
12 Birmingham City																		
19 Tottenham H. (FAC 1)																		
26 Watford																		
December																		
3 Coventry City																		
10 Stoke City (FAC 2)																		
18 West Bromwich Albion																		
26 Notts County																		
27 West Ham United																		
31 Sunderland																		
1984																		
January																		
2 Nottingham Forest																		
7 FA Cup 3																		
14 Arsenal																		
21 Wolverhampton W																		
28 Ipswich Town (FAC 4)																		
February																		
4 Aston Villa																		
11 Manchester United																		
15																		
18 Liverpool (FAC 5)																		
25 Southampton																		
March																		
3 Queens Park Rangers																		
7																		
10 Birmingham City																		
17 Norwich City																		
24 Leicester City (MC Final)																		
31 Ipswich Town																		
April																		
7 Everton																		
14 Tottenham H. (FAC SF)																		
17 West Ham United																		
21 Notts County																		
28 Watford																		
May																		
5 Coventry City																		
7 Stoke City																		
12 West Bromwich Albion																		
19 FA Cup Final																		

Continued from page 9

	72-73	73-74	74-75	75-76	76-77	77-78	78-79	79-80	80-81	81-82	82-83	Total
Birmingham	1					2(1)						2(1)
Borehamwood						1						1
Brentford												1(2)
Bromley						1(2)						1(2)
Everton						2						2
Fulham						2(3)						2(3)
Hendon						1(1)						1(1)
Hitchin						2(2)						2(2)
Ipswich						1(1)						1
Lincoln												1(1)
Man Utd												1
Malton						1						1
Newcastle												1
Newport						2(1)						2(1)
Nottingham F												1(1)
Orient												1(2)
Portsmouth						2(1)						2(1)
Reading						1(1)						1(1)
Swindon												2(1)
Tooting & M												2
WBA												1
West Ham Utd												2

	73-74	74-75	75-76	76-77	77-78	78-79	79-80	80-81	81-82	82-83	83-84	Total
Aston Villa						1						1(1)
Blackpool												1(1)
Cardiff						1(1)						1(1)
Charlton												2
Crawley						1						1
Gillingham												2
Leeds						1						1
Man City												1
Millwall												2(1)
Newport												2(1)
Portsmouth						2(2)						3(2)
Reading												1(1)
Tottenham												1
Wigan												2(1)
Wolves						1						2
Wrexham						2(1)						3
Swansea												2(1)

Statistics show season-by-season appearances against each opponent in every competition. 's' denotes he appeared as substitute. Goals are shown in brackets. Up to and including 8th October.

FOOTBALL COMBINATION FIXTURES 1983-84

Date	Opposition	F	A
Aug. 27	Chelsea	1	1
Sept. 7	Leicester City	1	0
Sept. 10	Ipswich Town	0	0
Sept. 14	Reading	4	1
Sept. 17	Arsenal	1	2
Sept. 20	Millwall	4	0
Sept. 24	Swansea City	3	1
Oct. 3	Charlton Athletic (7.30)	1	1
Oct. 8	Bristol Rovers	2	1
Oct. 11	Norwich City	0	0
Oct. 18	Crystal Palace	0	0
Oct. 25	Southampton		
Nov. 1	Fulham		
Nov. 5	Brighton and Hove A.		
Nov. 9	Millwall		
Nov. 15	Birmingham City		
Nov. 23	Oxford United		
Nov. 26	Swindon Town		
Nov. 29	Swindon Town		
Dec. 3	Tottenham Hotspur		
Dec. 6	Bristol Rovers		
Dec. 10	Watford		
Dec. 17	West Ham United		
Jan. 3	Queens Park Rangers		
Jan. 17	Chelsea		
Jan. 21	Reading		
Jan. 28	Swansea City		
Feb. 4	Arsenal		
Feb. 14	Charlton Athletic		
Feb. 25	Queens Park Rangers		
Feb. 28	Southampton		
Mar. 6	Brighton & Hove A.		
Mar. 10	Fulham		
Mar. 13	Watford		
Mar. 17	West Ham United		
Mar. 24	Norwich City		
Mar. 27	Crystal Palace		
Mar. 31	Leicester City		
April 7	Ipswich Town		
April 10	Birmingham City		
April 14	Oxford United		
May 12	Tottenham Hotspur		

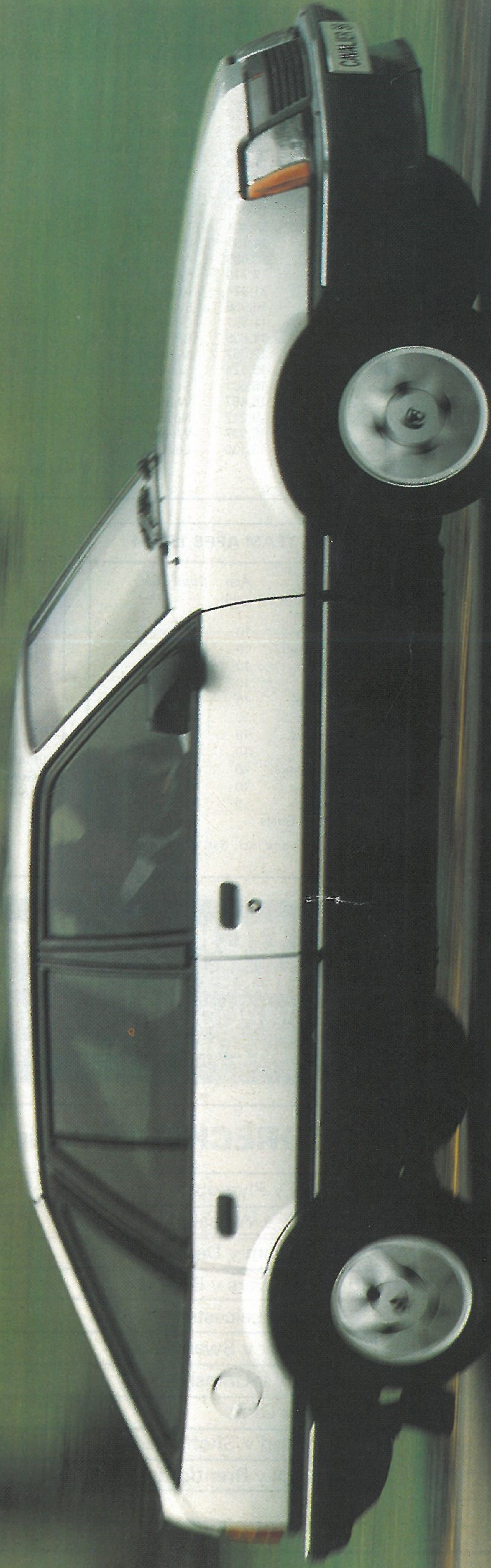
SOUTH EAST COUNTIES LEAGUE FIXTURES 1983-84

Date	Opposition	F	A
Sept. 3	Wimbledon	3	2
Sept. 9	Southend	4	2
Sept. 17	Brighton	4	1
Sept. 24	Bristol Rovers	1	4
Oct. 1	Swindon Town (Cup)	1	5
Oct. 15	Oxford United	0	0
Oct. 22	Reading		
Oct. 29	Oxford United		
Nov. 5	Swindon Town		
Nov. 19	Tottenham		
Dec. 3	Brentford		
Dec. 17	Bristol Rovers		
Feb. 4	Southend		
Feb. 11	West Ham United		
Feb. 18	Tottenham		
Feb. 25	Brighton		
Mar. 10	Wimbledon		
Mar. 24	Swindon Town		
Mar. 31	West Ham United		
April 28	Brentford		

ATTENDANCES AND DIVISION ONE TABLE 1983-84

Highest	Average		Home						Away					
			P	W	D	L	F	A	W	D	L	F	A	Pts
56,121	46,220	Manchester United	10	4	0	1	10	3	3	1	1	8	8	22
34,246	30,372	Liverpool	10	2	1	1	4	3	4	1	1	8	3	20
32,555	22,697	West Ham United	10	4	1	1	16	6	2	0	2	4	4	19
12,747	11,610	Luton Town	10	4	1	0	14	4	2	0	3	5	5	19
26,185	18,093	Ipswich Town	10	3	1	2	14	7	2	1	1	6	4	17
27,140	20,079	QPR	10	3	1	1	8	3	2	1	2	9	6	17
20,674	19,041	Southampton	9	3	1	0	5	0	2	1	2	5	5	17
38,042	33,404	Tottenham	10	1	1	2	4	6	4	1	1	12	8	17
15,161	14,131	WBA	10	3	1	0	5	1	2	1	3	10	14	17
39,318	25,685	Aston Villa	9	5	0	0	8	3	0	1	3	4	7	16
26,658	17,710	Nottingham Forest	10	3	1	1	9	6	2	0	3	7	10	16
42,704	31,924	Arsenal	10	3	0	3	11	8	2	0	2	6	4	15
22,658	16,955	Everton	10	2	2	2	3	3	2	1	1	4	5	15
13,441	11,951	Coventry City	10	2	1	2	7	7	2	1	2	7	9	14
19,016	14,609	Birmingham City	10	4	0	1	6	2	0	2	3	3	9	14
23,859	17,367	Norwich City	11	2	1	2	11	8	1	3	2	6	8	13
26,826	15,524	Sunderland	10	2	2	2	7	8	1	0	3	2	8	11
23,704	16,601	Stoke City	10	2	0	2	6	7	0	3	2	5	12	9
21,056	15,487	Watford	10	1	1	3	10	12	1	1	3	5	6	8
11,031	9,217	Notts County	10	1	1	3	3	9	1	0	4	7	11	7
26,249	16,937	Wolverhampton	9	0	2	3	5	11	0	0	4	2	11	2
15,538	13,130	Leicester City	10	0	1	3	2	12	0	1	5	4	11	2

Luton's star.



Two teams from Luton are currently making a name for themselves.

'The Hatters' are in the first division.

And Vauxhall-Opel are enjoying fantastic sales success.

Achievements in different fields, but

for the same reasons.

A consistently high all-round performance and magnificent team effort.

Facts confirmed by checking out today's line-up, and by a visit to your local Vauxhall-Opel dealer.

With stars like the Cavalier, the coming season promises to be even better for us.

We're sure that's also true of Luton Town.



VAUXHALL-OPEL