

# THE HATTER

FOOTBALL LEAGUE DIVISION ONE  
SATURDAY 15th JANUARY 1983

LUTON TOWN v TOTTENHAM HOTSPUR



TODAY'S MATCH IS SPONSORED BY

Wallspan Bedrooms



# ACTION



## WEST HAM UNITED 2 LUTON TOWN 3

We returned from Upton Park with a well deserved victory thanks to a hat-trick from Paul Walsh. But there were also good performances from Frank Bunn and Mitchell Thomas, both making their First Division debuts.

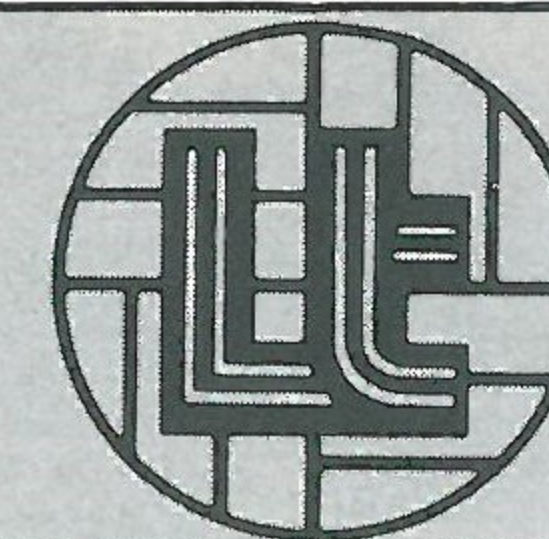
So close . . . Wayne Turner makes West Ham hearts flutter with a close effort.

So close . . . Bunn almost makes connection which could have provided an early goal.

More pictures on pages 26 and 27.

# TEAM CHECK

## LUTON TOWN



- 1 JAKE FINDLAY (1)
- 2 KIRK STEPHENS
- 3 MITCHELL THOMAS
- 4 BRIAN HORTON
- 5 CLIVE GOODYEAR
- 6 MAL DONAGHY
- 7 RICKY HILL
- 8 FRANK BUNN
- 9 PAUL WALSH
- 10 WAYNE TURNER
- 11 ~~DAVID MOSS~~ WATTS
- 12 KELLOCK

Today's Match Ball is sponsored by:  
WILLIS-DAWSON

## TOTTENHAM HOTSPUR



- 1 RAY CLEMENCE (6) 1
- 2 CHRIS HUGHTON
- 3 GARY O'REILLEY
- 4 GRAHAM ROBERTS
- 5 ~~MIKE HAZARD~~ BROOKE
- 6 STEVE PERRYMAN
- 7 ~~GARRY BROOKE~~ ARDILES
- 8 STEVE ARCHIBALD
- 9 TERRY GIBSON
- 10 RICARDO VILLA
- 11 ~~ALISTAIR DICK~~ MABBUTT
- 12 HODDLE

Today's Match is sponsored by:  
WALLSPAN BEDROOMS

Referee: A. J. HAMIL. Linesmen: H. E. BISHOP (Red Flag), A. J. BUNCE (Yellow Flag)

*Chairman:* Denis Mortimer

*Directors:*

R. L. Banks, D. J. Evans, E. S. Pearson  
R. J. Smith, J. R. Smith (Executive)  
D. J. Pleat (Team Manager)

*President:* T. Hodgson

*Vice-Presidents:*

J. A. C. Bain (Deputy President)  
Lord Hill, Sir Reginald Pearson OBE,  
A. G. Berry, J. B. Brent, B. Cole,  
B. England, N. S. Fookes,  
C. Holloway, I. E. Holmes,  
C. J. Evans, R. Larkinson,  
L. Leppington, Eric Morecambe OBE,  
R. Safranek, E. Waller, R. Unwin

*Administration:*

*General Secretary:* Graham MacKrell

*Club Secretary:* John Wilkinson

*Business Development Executive:*  
Bill Tomlins

*Projects and Advertising Executive:*  
Mike Beevor

*Promotions Manager:* Mike Hardwicke

*Catering Manager:* Clive Hustwitt

*Assistant Promotions Manager:*  
John Gornall

*Youth Development Officer:* Colin Ball

*Travel Organiser:* Mrs C. Ball

*Auditors:*

Arthur, Young, McClelland,  
Moore & Co.

*Photographer:* Gareth Owen

*Playing:*

*Coaches:*

David Coates, John Moore and  
Trevor Hartley

*Physiotherapist:* John Sheridan

*Doctor:* W. A. C. Berry MBBS



**LUTON TOWN FC**  
70-72 Kenilworth Road  
Luton  
Tel: 411622

All ticket enquiries please contact  
Luton 30748. All matchday information is  
obtainable from our 24-hour answering  
service - Telephone Luton 33010

Printed by  
Hemmings & Capey (Leicester) Ltd



**BEDFORD BUSINESS MEANS:**

**You need it,  
we've  
got it.**



**A vehicle for every business.**

You'll find Bedfords working in just about every business you can think of. That's because we offer a vast range of vehicles from light vans to heavy-duty trucks to keep the wheels of British industry turning. And, if you came to the match by coach, the chances are that also was a Bedford.



**A dealer round every corner.**

You'll find a Bedford dealer is never far away. He'll help you choose the vehicles that best suit your business needs; he'll advise you on our special leasing, insurance and warranty schemes; and he'll maintain your Bedfords in peak condition throughout their long working life.

Because, giving our customers what they need, when they need it, is what Bedford business means.



**BEDFORD  
MEANS  
BUSINESS**

# MY VIEW

A big welcome to everyone here today for what can be truly described as one of our most attractive games of the season. My hope is that the standard of individual and team play is of the quality shown when we have previously met Tottenham this season.

Luton Town have always enjoyed a good relationship with our friends from North London. When we haven't been playing in League or Cup games, we have always kept in touch with regular friendly matches at Cheshunt or Luton.

The result of last Saturday's Cup-tie was pleasing, particularly as the three players who came into the side at West Ham continued the good work.

Also, of course, Mark Watts — our young winger — made a satisfactory debut after David Moss had received a training injury. It is nice to see youngsters come in and do well but the pressures at First Division level are great in terms of the consistent quality required and no-one should expect too much too soon.

However, we should all be delighted that last week's team contained six players who progressed through our youth teams from school. This season, under the guidance of John Moore, our youth team have won through to the last 16 of the FA Youth Cup with victories over St Albans, Cambridge United and Newport County and are also in the semi-finals of the Southern Junior Floodlit Cup after beating Spurs, West Ham and Southend United.

I am sure that, among our youth players, we have future members of the first team. Their dedication and application must be 100 per cent if they are to come through.



Brian Stein is now out of plaster and anxious to play again. Incidentally he has not committed himself to playing for Wales after being invited to do so by Mike England.

Mike Saxby is winning a tremendous battle for fitness and playing with great endeavour in the reserves. Rob Johnson will spend the rest of the season working with physio John Sheridan.

This afternoon, we are again featured on television and I hope they can record some exciting play but, more important, hope the real supporters enjoy the live action twice as much. It's on the terraces that we need the people and indeed the players of the future.

DAVID PLEAT



# TWO TOP TEAMS TOGETHER LUTON TOWN FC

The new name in Division One of the  
Football League

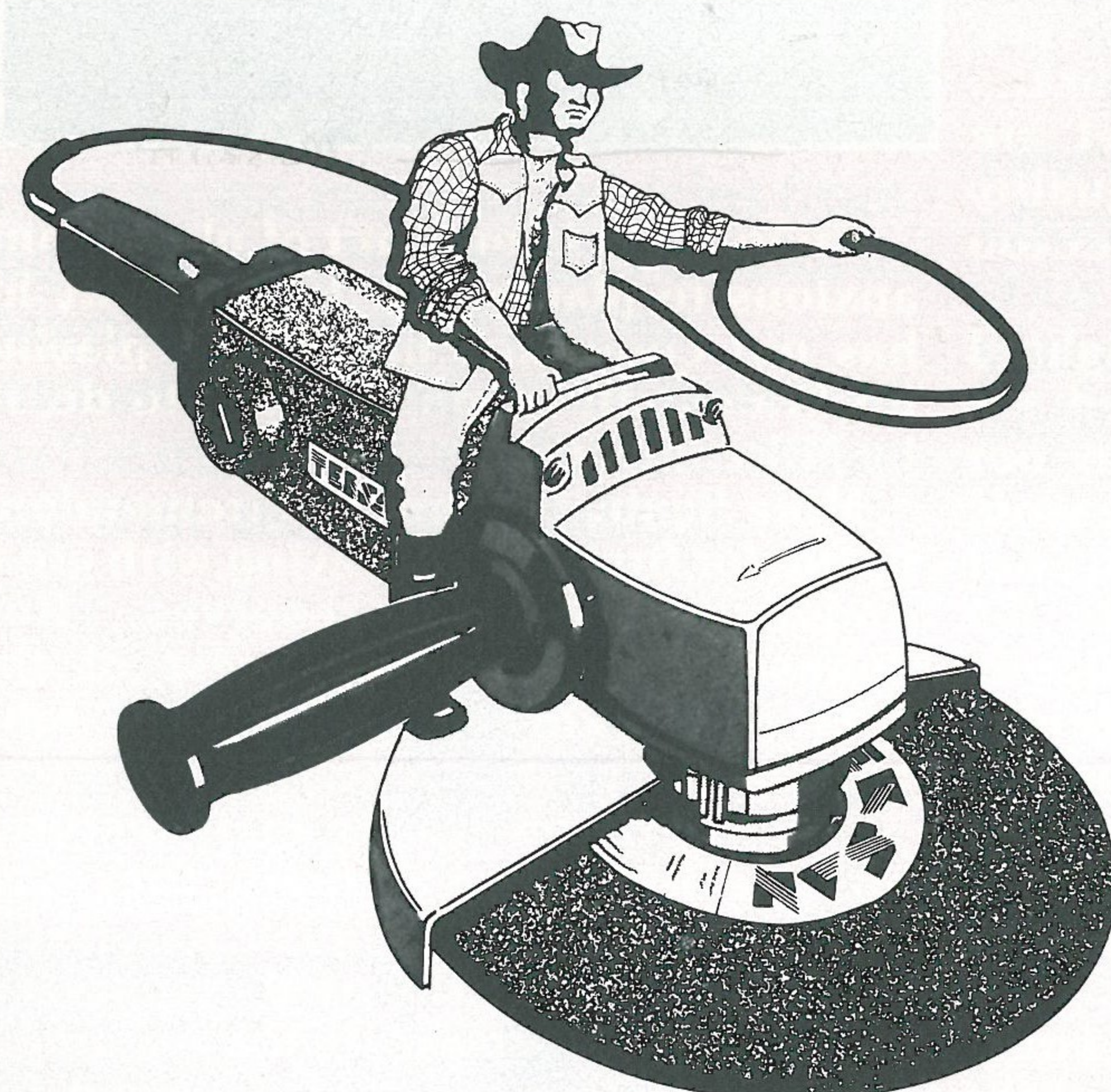
## HERTFORDSHIRE BTR LIMITED

The new name in Division One of the  
Automotive Component Industry



**HERTFORDSHIRE  
BTR LIMITED**  
Subsidiary of BTR PLC

Works Road, Letchworth  
Hertfordshire SG6 1LW  
Telephone: 046 26 2355  
Telex: 82204



# POWER YOUR WAY TO THE TOP!



**TEK POWER TOOLS LTD**

Britain's leading power tool specialists

# LUTON TRAVEL

After a run of several home games, we are looking forward to travelling to Brighton next Saturday. To remind you, fares are: adults £4, juveniles £3.50 and departure times are Luton 10 a.m., Hitchin 9.30 a.m., Stevenage 9.15 a.m., Hemel Hempstead 9.15 a.m., Redbourn 9.30 a.m., Harpenden 9.45 a.m., Aylesbury 8.45 a.m., Leighton Buzzard 9.00 a.m., Milton Keynes 9.15 a.m.

Booking lists will close at 5.00 p.m. on Thursday. If you wish to travel, and have not reserved your seat, don't delay. Coaches cannot be put on at the last minute, so we have to have a deadline.

When booking, if you have a telephone number, it would be helpful in case we have to contact you for any information regarding your coach. Payment in advance would also help your couriers.

On 12th February we head north for Manchester United, a long motorway trip. To allow time for a stop, we shall depart from Maple

Road at 9.30 a.m., Hitchin 9.00 a.m., Stevenage 8.45 a.m., Hemel Hempstead 8.45 a.m., Redbourn 9.00 a.m., Harpenden 9.15 a.m., Aylesbury 8.15 a.m., Leighton Buzzard 8.30 a.m., Milton Keynes 8.45 a.m., Stony Stratford 9.00 a.m.

Fares will be £5.50 (adults) £4.50 (juveniles) but registered Travel Club members will receive concessionary fares of £5 (adults) £4 (juveniles).

It is essential you quote your membership number when booking, so booking sheets can be made out correctly. Booking lists will close on the previous Thursday.

Travellers on the in coach from Hemel Hempstead, Redbourn and Harpenden have requested their service leaves earlier. Departure times in future will be Hemel Hempstead Bus Station 1.00 p.m., Redbourn High Street 1.15 p.m., and Harpenden High Street 1.30 p.m.

CATHERINE BALL Travel Organiser

## MEMBERS OF THE

## KENILWORTH SUITE

AMERICAN-CAN (UK) LTD  
WALTON ROAD, CALDECOTTE  
BOW BRICKHILL  
MILTON KEYNES MK7 8AE  
BARRATT DEVELOPMENTS  
(LUTON) LTD  
PO BOX 5, BARRATT HOUSE  
LUTON L42 7XJ. TEL: LUTON 422771  
MR D. SAVAGE  
BEDFORD COMMERCIAL VEHICLES  
LUTON  
A. G. BERRY FCCA  
CHAIRMAN, BLUE ARROW GROUP  
SERVICES LTD  
5 LONDON ROAD, ST ALBANS, HERTS  
BRENGREEN HOLDINGS PLC  
61 CHEAPSIDE, LONDON EC2V 6AX  
B. COLE ESQ  
CLEANDUSTRIAL SERVICES LTD  
PALMERS GREEN, LONDON N13  
TEL: 01-882 4626  
FILMERGRAPHIC ASSOCIATES  
PHOTOTYPESETTING AND PRINTING  
BAINSON HOUSE, ALTON ROAD, LUTON  
TEL: LUTON 36407  
FINE STAMPS LTD  
BILTON WAY, LUTON  
TEL: LUTON 36761  
N. S. FOOKES ESQ.  
N. S. FOOKES AND SONS  
(PLANT FACILITIES) LTD  
45 LATIMER ROAD, LUTON  
TEL: LUTON 26139  
MR E. FOUNTAIN  
VAUXHALL MOTORS  
LUTON

S. GOLBY, FREDK RAY LTD  
STANBRIDGE ROAD  
LEIGHTON BUZZARD  
TEL: 372241  
BRIAN E. HANDSCOMBE  
(LIFE AND PENSIONS BROKER)  
48 ALMA STREET, LUTON LU1 2PL  
TEL: LUTON 425921/4  
MR I. E. HOLMES  
IVOR HOMES LTD  
82-88 MARSH ROAD, LUTON  
TEL: LUTON 56622  
C. J. HUDSON ESQ.  
E. W. HOLDINGS LTD  
6 UNION ST., LUTON  
TEL: LUTON 30511  
RICHARD C. LARKINSON  
(BALDOCK) LTD  
TWENTY PENCE ROAD  
COTTENHAM, CAMBS.  
P. M. LAYCOCK  
11 THE AVENUE  
FLITWICK, BEDS.  
MARK JAMES (SALVAGE) LTD  
16 WEST STREET, DUNSTABLE  
TEL: DUNSTABLE 605944  
MARSHALLS OF LUTON  
(BUILDERS) LTD  
SARUM ROAD, LUTON  
TEL: LUTON 597666/9  
MR & MRS S. J. PEARSON  
55 LUTON ROAD, WILSTEAD  
BEDFORDSHIRE JK45 3ET  
DR & MRS G. L. PLESTER  
9 BRIARS CLOSE, NUNEATON  
WARWICKSHIRE

A. HUNTER ESQ.  
RAVENMERE LTD. ALLRIC HOUSE  
21 FARLEY HILL, LUTON  
TEL: LUTON 32640  
RICHMOND ELECTRONICS  
(MARKYATE) LTD  
HICKS ROAD, MARKYATE, HERTS.  
TEL: LUTON 840761  
ROBINSON METAL (LUTON) LTD  
CALEB CLOSE  
464 DUNSTABLE ROAD, LUTON  
TEL: LUTON 53866  
R. S. SAFRANEK ESQ.  
NEAHURST LTD, LONDON RD.  
LOWER STONDON, HITCHIN  
TEL: HITCHIN 94-813545  
MR W. POWERS  
SHAW & KILBURN OF LUTON  
540-550 DUNSTABLE ROAD  
LUTON, BEDS  
TRIMOCO PLC  
2 VICTORIA STREET, LUTON  
TEL: LUTON 416312  
T. & H. TYRE SERVICES LTD  
MANOR ROAD, LUTON  
TEL: LUTON 27665  
R. W. UNWIN ESQ.  
R. W. UNWIN & CO. LTD  
PROSPECT PLACE, WELWYN HERTS.  
TEL: WELWYN 6441  
WALLSPAN BEDROOMS  
INDUSTRIAL ESTATE  
MAULDEN ROAD, FLITWICK, BEDS.  
TEL: FLITWICK 713621



# HATTER FOCUS



**Full name:** STACEY NORTH  
**Birthplace:** Luton  
**Birthdate:** 25.11.64  
**Height:** 6ft 2in  
**Weight:** 12st 6lb  
**Previous clubs:** None  
**Job or trade before turning pro:** Apprentice professional  
**Nickname:** None  
**Favourite newspaper:** The Sun  
**Favourite player:** Phil Thompson (Liverpool)  
**Players for the future:** Ray Daniel, Mitchel Thomas  
**Football hero of childhood:** Jackie Charlton  
**Favourite other sport:** Athletics  
**Other sports person you most admire:** Daly Thompson  
**Your best ever all time XI:** Brazil 1970 World Cup eleven  
**Most memorable match:** Luton v Norwich, Eastern Junior Floodlit Cup 1980  
**Friendliest away fans:** Southampton  
**Best stadium played in:** Southampton  
**Favourite food and drink:** Cheese and potato pie, milk  
**Miscellaneous likes/dislikes:** Sleeping/eating, injuries/smoking  
**Favourite singers:** George Benson, Marvin Gaye  
**Favourite actor/actress:** Charles Bronson, Jane Fonda  
**Favourite holiday resort:** Ramsgate  
**Best film seen recently:** Valanche Papers  
**Favourite TV shows:** Fame, Top of the Pops  
**Favourite activity on day off:** Sleeping  
**Biggest influence on career:** John Moore, Youth team coach  
**Superstitions:** None  
**International honours:** England Youth  
**Personal ambition:** To play first team football  
**If not a player, what job would you do?** To work as near to sport as possible  
**Which person in the world would you most like to meet?** Prince of Wales



## STACEY NORTH

**FORUM**  
**THEATRE**  
**HATFIELD**  
**ADVANCE**  
**BOX**  
**OFFICE**  
**HATFIELD**  
**71217**

### EXPLOSIVE! Forthcoming Events Now Booking!

1983 — An entertaining year for you!

Morrisey Mullen &  
 Zoot Money  
 Buddy Rich  
 Chris Barber  
 John Mann in Concert  
 Northern Black Light  
 Theatre  
 George Melly

An Evening in Bed with  
 Jeremy Beadle  
 Neil Innes  
 Jimmy Tarbuck  
 The Baron Knights  
 Dave Brubeck



# SCENE ON ONE

A weekly feature which puts the spotlight on the First Division scene. By Tony Pullein

Manchester United's last hope of catching Liverpool could depend upon whether manager Ron Atkinson has been able to complete the transfer of England striker Trevor Francis from Sampdoria.

Although United beat European Champions Aston Villa 3-1 at Old Trafford on New Year's Day, they were held at home to a goalless draw by WBA two days later. The trio against Villa were United's only goals in five matches and their leading scorer was midfield man Bryan Robson, with eight.

Francis was transferred from Manchester City to Italian club Sampdoria last summer for £750,000 but had been out of action for several weeks through injury. Although the club doctor pronounced him fit to return to action, Francis failed to appear for a recent League game and club officials now seem prepared to allow him to return to England.

Atkinson had tried to sign the player before he joined Manchester City last season. And there's little doubt that a fully-fit Francis could do wonders in reviving a flagging United attack.

The United manager could also be in the market for a keeper. The player he has made enquiries about is West Brom's Tony Godden but the United boss did not confirm whether he was looking upon a new keeper for cover or as a replacement for Gary Bailey.

Even if United do sign Francis, their chances of catching Liverpool seem to be remote, even though Anfield manager Bob Paisley refuses to believe the race is over. Liverpool took 10 points out of 12 over the holiday period and looked down happily on the rest of the challengers with a 10 point lead.

'If you tell me we have a 10 point lead with three games to play, then I'll back us to win the title,' smiled Mr Paisley. 'The race is by no means over yet and we shall continue to fight for every point.'

Strikers Kenny Dalglish and Ian Rush both scored holiday hat-tricks and Rush's goal against Arsenal took his tally for the season to 21.

Another club with good reason to look back over the holiday with satisfaction was Sunderland who played goalless draws with the three top clubs — Manchester United, Liverpool and Nottingham Forest — and then won 1-0 at Notts County.

Manager Alan Durban seems now to have sorted out his defensive problems because, after the Notts County match, Sunderland had not conceded a goal in five games. For all their efforts, Sunderland remained level with the bottom club at the end of the holiday, though.

Former England striker Mike Channon

scored winning goals for Norwich against both ourselves and Swansea City to ease the Canaries' relegation worries. Channon now seems to be settled at last after unhappy spells with Newcastle and Bristol Rovers earlier this season.

After being released by Southampton at the end of last season, Channon decided to join Newcastle this season but left St James' Park after only a few games. 'I think the club is on the right lines but they are not good enough to win promotion this season,' he said at the time.

He then dropped into the Third Division with Bristol Rovers but they used him in midfield and he didn't feel happy with his game.

'All players need a stage to display their skills,' said Channon. 'Mine is in the First Division and I believe I shall do better with Norwich.' He certainly started on the right lines.

Lawrie McMenemy can be excused if he starts to believe in the super-natural. For some reason his Southampton team always does well during December. 'Since we returned to the First Division in 1978 we have played 25 League games during December and only been beaten once,' he revealed.

By the beginning of this December, the Saints had managed to win only four times in 16 games. But they celebrated December with four wins in a row and then drew 2-2 at home to Arsenal.

As soon as the month ended, the Saints were back to relegation form, losing 1-2 at Ipswich and 0-2 at Aston Villa.

'I never really believed we were as poor a side as our early results made us out to be,' explained Mr McMenemy. 'We suffered several blows and lost such players as Kevin Keegan, Mike Channon and Alan Ball all within a short period.'

'Any team would suffer under those circumstances. But we had some good youngsters and the signing of Mick Mills helped. I had forecast that we would settle down and start winning again after the turn of the year. Our revival began a month earlier than I had expected.'

Coventry City equalled their best victory of the season when they beat Manchester United 3-0 at Highfield Road, a result that gave manager Dave Sexton special cheer. 'It's always nice to do well against your old club,' he smiled. United's visit drew Coventry's best crowd (18,938) of the season.

Victory in their next game, here at Kenilworth Road, lifted the Sky Blues into the top six of the division. Success here was Coventry's fifth win in six games, their only set-back coming at Nottingham Forest (2-4) on Boxing Day.

Swansea City, who last season enjoyed such a magnificent debut season in the First Division, have been dropping ominously towards the relegation zone. The Swans' 0-1 defeat at Norwich was their fifth game without a win and was their fifth successive away defeat.

Since winning at Nottingham Forest last May, Swansea had played 13 away League matches without a win.

Two points from four games — three of them at home — was Brighton's meagre holiday reward. And there was much disappointment over the tiny crowd that turned up for the visit of high-riding Nottingham Forest — just 10,402.

Goldstone's best crowd (21,794) saw them beaten at home 1-0 by Southampton. After they had been beaten 2-0 at Tottenham, a total of 15,130 saw Brighton draw 1-1 at home to Watford.

Sadly, Brighton's efforts to play bright and breezy attacking football do not appear to be paying off and the local public has been quick to show its feelings.

John Lyall, manager of injury-hit West Ham, had plenty to smile about last week. Though he has had to make continual changes, because of injury, he was delighted at the form of two teenagers introduced to the side.

Shortly before Christmas, Alan Dickens scored on his League debut at Notts County. Over the New Year Tony Cottee also celebrated his First Division bow with a goal against Tottenham.

'It's good to know that we have players of such quality in the Reserves,' said Mr Lyall. 'Over the years we have produced many great players from our youth team and the supply continues.' But his party was ruined when we won at Upton Park a week last Tuesday.

It has not been through lack of trying that Ipswich's transfer-listed striker Alan Brazil went five games without scoring a goal. 'I may be on the list but while I am an Ipswich player I shall continue to give them 100 per cent,' he said.

'I hope I can start scoring again because it is only by doing that that I shall persuade another club to sign me.'

The season's longest-drawn-out transfer deal was finally completed when Arsenal signed Yugoslav international Vladimir Petrovic from Red Star Belgrade. Negotiations started last summer and Petrovic joined the players for training several months ago.

But the Yugoslav FA steadfastly refused to sanction the transfer until 1983. Petrovic finally made his bow for the Gunners against Swansea on New Year's Day.

# JUNIOR HATTERS



Letting our members know what is happening is so important that I have broken with tradition just for once. We have left out the photographs of our matchday mascot and four escorts, and concentrated instead on our two main sources of news, the **Evening Post-Echo** and **Chiltern Radio**, who are also our Junior Hatters Club sponsors.

Of course, there is another reason too. At the time of going to Press, I didn't know who the mascots and escorts would be! And the explanation is that there is now a regular weekly spot for Junior Hatters on **Chiltern Radio**. It goes out on **Kid's Stuff**, Phil

Holden's popular childrens' programme, every Saturday between 1 p.m. and 2 p.m.

Whoever our lucky five members are today going out on to the pitch with the team, they certainly listened in, because they won their place in the Luton Town mascots team by solving a simple quiz.

Easy competitions form part of both the Junior Hatters on **Kid's Stuff** and the Junior Hatters column every Tuesday in the **Evening Post-Echo**, as well as a means of letting all our membership know what is going on. So make a point of reading the weekly column in the **Evening Post-Echo** every

Tuesday, and listening to **Kid's Stuff** with Phil Holden on Saturday afternoon.

Pictures today are of our two main Junior Hatters newscasters. The **Evening Post-Echo's** Rod Fountain is seen editing the column in preparation for Tuesday's paper, and Phil Holden is seen presenting his **Kid's Stuff** programme for children.

Together with this column, I hope to keep our large membership up to date with all the news.

## DIARY DATES

**Tuesday 18th January.** Five-a-side football competitions continue at Bedford Trucks Canteen, Boscombe Road, Dunstable, from 6.15 p.m. to 7.45 p.m.

**Saturday 12th February.** Proposed Junior Hatters trip to Old Trafford. Names to Pam Gray, (Luton 391574) as soon as possible.

**Sunday 17th April.** Junior Hatters Gala Day, including five-a-side competitions. Entries will be required soon.

COLIN BALL

Youth Development Officer



JUNIOR HATTERS SPONSORED BY THE EVENING POST- AND CHILTERN RADIO

Read the Junior Hatters column only in the

EVENING  
**Post-**

EVERY TUESDAY

TUNE IN TO

378  
362

**Chiltern  
Radio**

EVERY SATURDAY MORNING

## WAS YOURS AN INSIDE JOB?

GLAZING REPAIRS & GLASS SUPPLIES  
PATIO DOOR & WINDOW INSTALLATIONS  
DOUBLE GLAZING (SECONDARY AND SEALED UNITS)  
INTERIOR AND EXTERIOR DECORATORS

For Domestic and Commercial enquiries contact Luton 53025/597505

**sapsworth**  
GLAZING & DECORATING  
J. Sapsworth Limited  
92 Marsh Road, Luton, Bedfordshire LU3 2NL  
Telephone: Luton (0582) 53025/597505

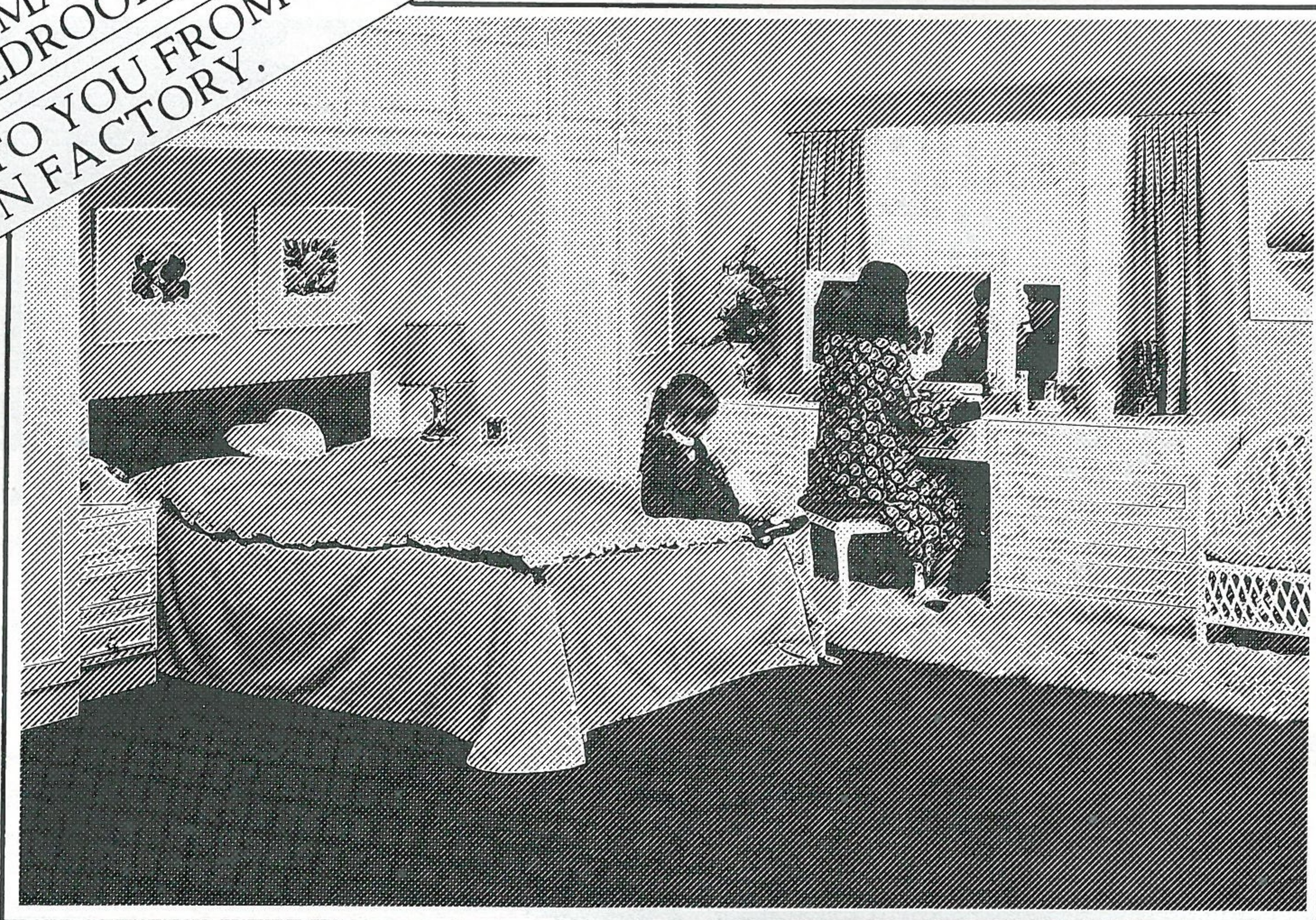




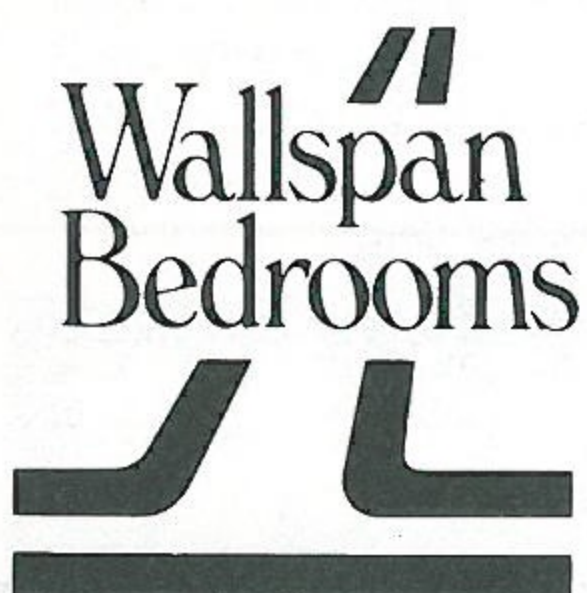
- ✓ INTEREST FREE CREDIT (ASK FOR WRITTEN DETAILS).
- ✓ 100's OF DESIGNS TO CHOOSE FROM.
- ✓ FREE DESIGN. FREE FITTING ON A DATE TO SUIT YOU.
- ✓ 1 YEAR NO QUIBBLE GUARANTEE.
- ✓ THE ONLY COMPANY TO PUBLISH A PRICE LIST.
- ✓ OVER 1/2 MILLION SATISFIED CUSTOMERS.
- ✓ TAILOR MADE TO FIT YOUR BEDROOM EXACTLY.
- ✓ DIRECT TO YOU FROM OUR OWN FACTORY.

# WE'RE STILL THE BEST EVEN AFTER 20 YEARS.

WHY? FIND OUT TODAY.  
Call into your local Wallspan showroom, see the furniture and collect our brochure and detailed price list. You'll soon see that you can afford a beautiful fitted bedroom.



Branches throughout UK  
Open 6 days a week



UNIT 174, BUTE STREET, ARNDALE CENTRE, LUTON, BEDS. TEL: LUTON 23015  
(ARNDALE CENTRE OPPOSITE BRITISH HOME STORES)

59 MIDLAND ROAD, BEDFORD. TEL: BEDFORD 211327  
(OPPOSITE BEEHIVE CENTRE)

18 MARKET PLACE, STEVENAGE, HERTS. TEL: STEVENAGE 724853  
17/19 QUEENS ROAD, WATFORD, HERTS. TEL: WATFORD 38388  
(OPPOSITE TREWINS)

# TOWN

THE PAGE WHERE OUR FANS WRITE TO US

To the manager, Thank you for sending me the Luton Town souvenirs. I am very proud to announce that Paul Walsh and Brian Stein are the best players at Luton. I always listen to the British football news on the radio and follow Luton's progress. I hope all goes well for you this season and in the New Year.

Loic Taylor-Bizet  
India Place  
Khandallah  
Wellington  
New Zealand

Dear Mr Pleat, I have been a supporter of Luton Town for over 20 years and think Kirk Stephens should play in midfield, and Jake Findlay should stay on his goal-line. The trouble with most keepers in the country is that they make it too easy for forwards to chip the ball over their heads.

Luton's free kicks should be taken more slowly and throws more quickly. Finally, I do hope you beat Watford this season and I take this opportunity of wishing you all the best for the New Year.

A. Devereux  
Harwoods Road  
Watford, Herts.

We hope you enjoyed the Boxing Day result, Mr Devereux - editor.

Dear David and all the Luton Town players, I would first like to thank all the team who signed the Christmas card for my mother to send to me. It was a lovely surprise.

I would like to wish everyone concerned with Luton Town a very happy Christmas and successful New Year and hope you show everyone you can still play good football. I only wish I could return home before the end of the season although all the results are sent out to me by my mother.

I have just listened to the BBC's

World Service which has made my Christmas with the news that you have just beaten Watford. Congratulations — and keep it up.

Cpl T. A. McCutcheon  
M.T. Tropp, 266 Signal Sqn.  
BFPO 666, Falklands  
South Atlantic

Dear Mr Pleat, Thank you for sparing the time today to attend the coaching course at Stopsley Sports Centre.

My seven year old son Christopher really enjoyed himself and he is pleased to have your autograph. He always thought the most important man at Kenilworth Road was David Moss!

Chris Barnes  
St Bernard's Close  
Luton

Dear Mr Pleat, My body shop personnel have asked that I write to express their gratitude for the services provided by Wayne Turner and George Pearce when they attended a Fancy Dress Disco at the High Town Club.

The function was arranged by the body shop personnel for the benefit of the handicapped people of the Downlands Centre (Leicester Road, Luton) and indeed, the participants of the Fancy Dress were themselves 'trainees' from that Centre.

Wayne and George were worthy ambassadors of the Luton Town Football Club, and their presence on the evening together with their ability to lift the occasion made it a most enjoyable evening for all concerned. Our thanks to Wayne for judging the Fancy Dress Competition at such short notice.

M. Eglinton  
Divisional Manager  
AC Body Shop  
Vauxhall Motors  
Luton

Dear David, As an exiled fan living in the north — and there are a lot of us — I am writing this immediately after the Everton game to let you know we are still 100 per cent behind you. There is no disguising a 5-0 defeat as a hammering, but let me assure you that, after watching them a few times this season, Everton are a far better team than their League position suggests.

I hope you don't mind the points I have made — they have been issued sincerely. We are still proud of you and the lads.

Bill Gilson  
Oldfield Drive  
Vicars Cross  
Chester

Dear David, Thank you for arranging for two players, including Wayne Turner, for coming along to put on a coaching session for the youngsters. I appreciate the players' schedule is most hectic and your help in this respect is very much appreciated.

Robin Wainright  
Assistant Manager  
Luton Regional Sports Centre

Dear David, Thought I would drop a line and thank you for making Ray Daniel available to come along to the club and take on the task of coaching some of our younger footballers.

It has been some six weeks since Ray first came along. He has shown tremendous enthusiasm for the task of coaching our 10-12 year old players. He never fails to turn up for a training session, and comes along most Sundays to the morning matches. In short, he is doing a good job and has been a great influence on the boys.

Richard Everitt  
Club Secretary  
61 FC, Luton

# LETTERS



# HATTERS A-Z

PART 15 - By TONY PULLEIN

**STRETEN, Bernard.** Bernard was our goalkeeper for some eight years immediately after the last war. He had previously been with Notts County and Shrewsbury as an amateur and won England amateur caps during those early days.

Though on the short side for a goalkeeper, Bernard quickly made a name for himself in Second Division football and, in November 1949, played for England in a 9-2 win over Northern Ireland at Maine Road.

He was unlucky to be a contemporary of such great goalkeepers as Frank Swift, Bert Williams and Ted Ditchburn, otherwise he would certainly have won more caps.

League record:

|       | Apps       |
|-------|------------|
| Luton | 1946-47 12 |
|       | 1947-48 42 |
|       | 1948-49 36 |
|       | 1949-50 25 |
|       | 1950-51 23 |
|       | 1951-52 42 |
|       | 1952-53 20 |
|       | 1953-54 37 |
|       | 1954-55 19 |
|       | 1955-56 1  |
|       | 1956-57 19 |
|       | 276        |



WAYNE TURNER

and two years later we stepped back into the Second Division. We spent a total of 21 seasons in the Third Division.

**TURNER, Gordon.** Gordon's tally of 243 League goals, set up between 1951 and 1964 has never been beaten. Gordon was signed by manager Dally Duncan in 1949 and, from 1953-54 on, he was our top scorer for five successive seasons. His 32 goals in 1954-55 helped us gain promotion to the First Division for the first time.

His biggest disappointment came in 1959. After he lost his place in the side, we reached the FA Cup Final and Gordon was only a spectator. His club spirit was much in evidence, though, as he regained his place

the following season and later topped our scoring list again on two occasions. He was picked for the Football League XI against the Scottish League in 1955-56.

League record:

|       | Apps       | Gls |
|-------|------------|-----|
| Luton | 1950-51 2  | 0   |
|       | 1951-52 11 | 4   |
|       | 1952-53 21 | 13  |
|       | 1953-54 32 | 16  |
|       | 1954-55 42 | 32  |
|       | 1955-56 33 | 19  |
|       | 1956-57 34 | 30  |
|       | 1957-58 40 | 33  |
|       | 1958-59 31 | 14  |
|       | 1959-60 31 | 6   |
|       | 1960-61 37 | 26  |
|       | 1961-62 33 | 20  |
|       | 1962-63 32 | 14  |
|       | 1963-64 27 | 16  |
|       | 406        | 243 |

**TURNER, Wayne.** Wayne has proved a most versatile player since making his League debut for us in midfield at Wrexham on the final day of 1978-79. He has also played at left-back. Last season he spent several weeks on loan to Lincoln City.

League record:

|         | Apps           | Gls |
|---------|----------------|-----|
| Luton   | 1978-79 1      | 0   |
|         | 1979-80 2      | 0   |
|         | 1980-81 1      | 0   |
|         | 1981-82 7      | 1   |
| Lincoln | 1981-82 16     | 0   |
|         | 1982-83* 14(2) | 1   |
|         | 41(2)          | 2   |

\*Up to and including 4th January 1983.

## CLUB '82

**J. Fedigan,** Adriatic Enterprises Ltd  
Footwear Importers  
20 St. Margarets Way, Leicester.  
Tel: Leicester 26022

**G. E. Smith,** Belsize Eng Co Ltd  
First Avenue, Bletchley MK1 1DW.  
Tel: (0908) 73496

**Tony Lambert,** Broad Street Print  
9 Broad Street, Hemel Hempstead, Herts.  
Tel: Hemel Hempstead 65490

**R. Bowden,** CAP Bodies Ltd  
Sunderland Road, Sandy, Beds.  
Tel: 0767 82680

**R. A. Finch,** Computer Technology Ltd  
Eaton Road, Hemel Hempstead  
Herts. HP2 7LB.

**E. Elliott,** Emerella  
Market Square, Biggleswade.  
Tel: Biggleswade 312127

**M. J. Matthews,** Greenwoods Transport  
Charlton Mead Lane, Hoddesdon, Herts.  
Tel: 09924 67181

**D. Keech, D. W. King & Co**  
Argyll Works, Stevenage, Herts.

**G. S. J. White**  
The London Truck Centre Ltd  
Charlton Mead Lane, Hoddesdon, Herts.  
Tel: (09924) 41535

**Derek Ludlow,** Ludlows of Luton  
(Industrial Factors) Ltd  
Thistle Road, Windmill Trading Estate,  
Luton, Beds. LU1 3XJ.  
Tel: Luton 29883/4

**Frank Ludlow,** Frank Ludlow Ltd  
Car Body Repairers, 71 Windmill Road,  
Luton, Beds. LU1 3XL.  
Tel: Luton 414441

**Tom McAuliffe,** Harpenden, Herts.

**J. Mead,** Pilcourt Ltd  
151 Bearton Road, Hitchin, Herts.

**J. A. Matthews,** 65 Shefford Road,  
Clifton, Beds.

**P. J. Sullivan,** Tricentral Trading  
(Hardware House) Ltd  
Kings Road, Flitwick, Beds.  
Tel: Flitwick 712121

**T. Bailey,** Wallspan Bedrooms Ltd.  
Industrial Estate, Maulden Road,  
Flitwick  
Tel: Flitwick 713621

**M. Manning,** Beard & Manning Ltd  
152 Leagrave Road, Luton, Beds.

**David Rand,** David Rand & Co Ltd  
51 Radlett Road, Frogmore, St Albans,  
Herts.

## COMPETITIONS

**LUTON**

## COMPETITIONS

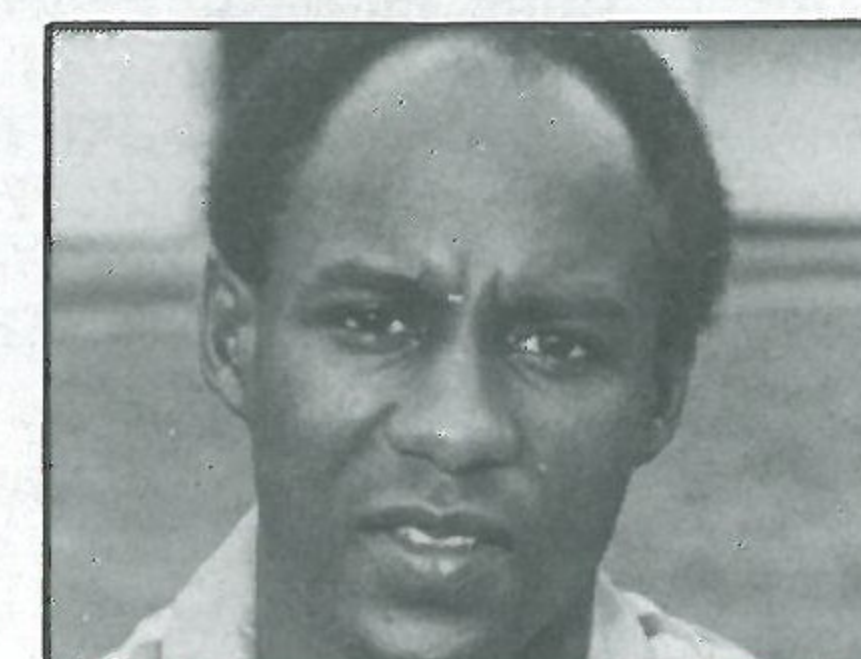
Wallspan  
Bedrooms

Showrooms throughout  
London and Home Counties  
SEE US IN  
LUTON ARNDALE CENTRE ☎ 23015

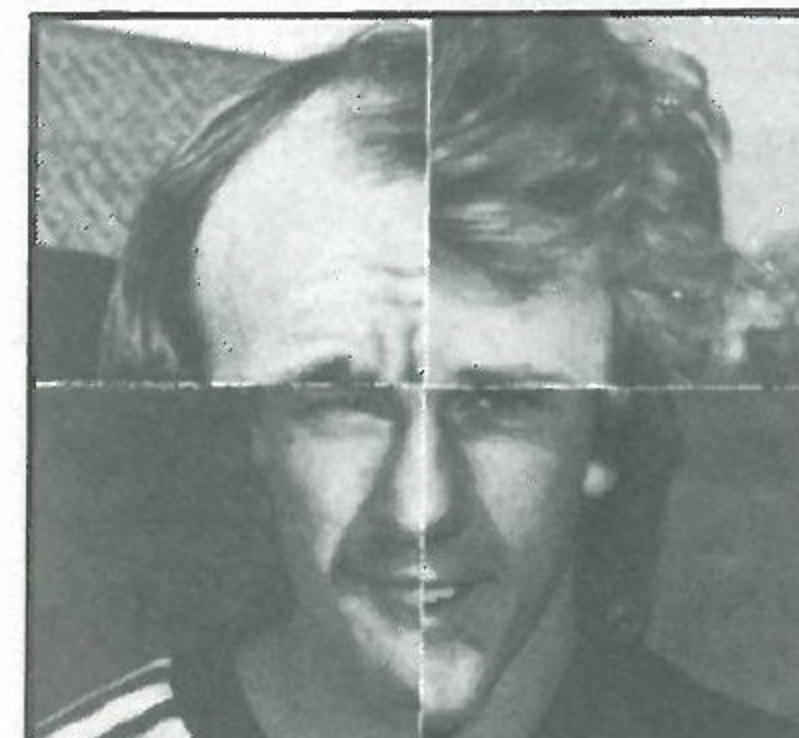
WIN A  
SUPER LUTON  
VIDEO

Wallspan  
Bedrooms

FITTED BEDROOM FURNITURE  
SEE US IN  
Yellow Pages



KEITH CASSELLS (Soton)



IAN WILSON (Leicester)



FRANK GRAY (Leeds Utd)

### NAME THE FACES

The lucky winner of the Name The Faces competition from the Peterborough United magazine who will today receive one of our videos depicting our run into Division One is Philip Hughes of Stevenage. He correctly spotted Keith Cassells (Southampton), Ian Wilson (Leicester City), Frank Gray (Leeds United). Our congratulations to Philip and also to the winner of the Coventry magazine.

Here's a new phototeazer with again a prize of a super commemorative video. The photo caption shows three players' heads mixed up. All you have to do is name the three players and their current clubs. Send your entries to: Luton Town Football Club, Matchday Magazine, 70-72 Kenilworth Road, Luton.

### NAME THE STAR

The name The Star competition continues from the Peterborough United magazine. As we are sure you all know we add a small proportion of the body of a famous player inviting you to guess the players' identity.

As the detail increases so the prize will diminish.

Send your entries to: Luton Town FC Matchday Magazine, 70-72 Kenilworth Road, Luton, Beds.



Building houses to make homes in  
at

Bramingham Road, Luton  
Warden Hill, Luton  
Parkside, Houghton Regis  
Wallington Rise, Baldock  
Two Mile Ash, Milton Keynes  
Church Green, Bletchley  
Kimbolton Gardens, Bedford  
Merton Court, Bedford  
Padbury House, Bedford  
Telephone: Luton (0582) 422771

**Barratt**  
LUTON LTD



## HAPPY BIRTHDAY, TOM

We are proud to claim that our president, Tom Hodgson, can boast unrivalled service in the Football League.

He has given tremendous loyalty to the football club since joining us as a player in 1930 from West Ham United and is now in his 53rd year with the club.

Tom has established a proud record because, in addition to playing for Luton, he has also served the club in the capacity of captain, acting manager, director, chairman and finally president.

He had the distinction of leading the Luton team out at Wembley for the 1959 Cup Final against Nottingham Forest.

Tom was discovered by West Ham after playing for junior clubs Morsley and Hetton Celtic in his native North East.

In addition to his association with Luton Town, Tom also kept the Warden Tavern and the Old Bell at Harpenden.

But we have found out that next week is another special occasion in Tom's life because he celebrates his 80th birthday on Tuesday.

We know that Tom is sitting in the directors' box for this afternoon's game and take this opportunity of wishing him a very happy birthday.

All our players, management and staff hope that Tom will be watching Luton for many years to come.

## AWAYDAY TRAVEL

A week today we make the journey to the South Coast to meet Brighton as we continue our First Division programme.

Many Luton supporters will make

the trip with our official travel club. But for those making their own way by road, the following route, prepared by the RAC, will be useful:

Leave London on the A23 (passing through Streatham and Croydon). Continue along the A23 until it turns into the M23. Continue along the M23 to the end (it now becomes the A23 again). Enter Brighton on the A23.

Turn right onto Shoreham and Worthing by-pass. Proceed by Mill Road and King George VI Avenue. Bear left onto Nevill Road to the junction of Old Shoreham Road. Turn left into Old Shoreham Road, and the football ground is on the right.

## SPECIAL GUESTS

We welcome a party from Marlow Boys FC to today's match. Marlow Boys were founded in 1980 with three teams at Under-11, 12 and 13 level. Playing in the Reading Sunday League with two of the teams now near the top of the table, Marlow Boys are guests of Chris Thorneycroft-Smith, marketing director of DAF Trucks, and we very much hope they will enjoy their day with us.

## BILL RICHARDS

It is with deep regret that we have to report the death just after Christmas of Bill Richards, a gateman with Luton Town for over 42 years. On behalf of the club we send our deepest sympathy to his wife and family.

## COVER SHOT

Victories over Watford (1-0) and West Ham (3-2) gave our fans plenty to enthuse over from the two games. Our cover shot today shows our players mobbing Clive Goodyear after he had scored the only goal of the game against our neighbours from Vicarage Road.

## MUSICAL BONANZA

We promised you superb entertainment on New Year's Day when the touring American Winnetonka High School Golden Variety Show Band provided the entertainment against Coventry City.

It was probably the best musical display seen at Kenilworth Road since



we started promoting pre-match entertainment and our supporters were treated to three sessions by these extremely talented musicians who even took the opportunity to display their talents after the match when many fans stayed behind to watch.

George Pierce, our pitch announcer, certainly seemed to enjoy himself as the girls persuaded him to dance. To mark our appreciation of the band's music, Luton chairman Denis Mortimer presented their leader with a pennant.

## CENTURY CLUB

It is time to begin thinking of our next Century Club away trip and we propose to run an Executive Coach to Manchester United on Saturday 12th February. To confirm the booking, we require names, with deposit, today.

We always have more enquiries than places, so it will be a case of first come, first served, and those who have travelled with us in the past will no doubt be anxious to do so again.

Today, for the third time this

season, we meet Tottenham Hotspur, and will no doubt be treated to an exciting afternoon's football. Our best wishes to our team.

Today, also, we have the third of our Century Club sponsors, when Mike Buckle is generously providing all our raffle prizes. Please show your appreciation to Mike by buying plenty of raffle tickets, the benefits are eventually passed on to the Football Club.

We are holding our grand raffle at Easter time this year, and making an early request for prizes for this bumper appeal. Books of tickets will be available shortly. You can involve your friends and the first prize will be an exciting one!

## JUNIORS VICTORY

Although our first team lost 2-1 against Coventry recently, there were a couple of victories for our Junior Hatters who beat the Sky Blues on the morning of the game. There was also a victory for the fathers in their game, and our picture shows the winning teams.



## IN RETROSPECT

Division Two: 1937-38 2-4 (h) 0-3 (a), 1938-39 0-0 (h) 1-0 (a), 1946-47 3-2 (h) 1-2 (a), 1947-48 0-0 (h) 1-0 (a), 1948-49 1-1 (h) 1-2 (a), 1949-50 1-1 (h) 0-0 (a).

Division One: 1955-56 2-1 (h) 1-2 (a), 1956-57 1-3 (h) 0-5 (a), 1957-58 0-0 (h) 1-3 (a), 1958-59 1-2 (h) 0-3 (a), 1959-60 1-0 (h) 1-1 (a).

1974-75 Luton 1 (Aston) Tottenham 1 (Chivers), Tottenham 2 (Duncan, Conn) Luton 1 (West).

Division Two: 1977-78 Luton 1 (West) Tottenham 4 (Hodde 2, McAllister, Duncan), Tottenham 2 (Osgood pen, Jones) Luton 0.

Teams for last game here, 22nd February 1978:

LUTON: Aleksic, Price, Carr, Hill, Faulkner, Fletcher P, Fuccillo, West, Fletcher R, Jones (Stein), Boersma.

SPURS: Daines, Naylor, Holmes, Hodde, McAllister (Moore), Perryman, Pratt, McNab, Duncan, Lee, Taylor.

Attendance: 17,024.

## TODAY'S REFEREE

Alex J. Hamil, from Wolverhampton, commenced refereeing in 1959 and via local Leagues, Midland Combination and West Midland League reached the Football League Line and Full List in 1974. Refereed the West Midland Cup (1972) and Birmingham Senior Cup (1973) Finals and FA Trophy semi-final (1978); also Football League Cup quarter-final — Swindon v Arsenal (1980). Lined the Scotland v Ireland international in 1976, and Wales v Ireland in 1978, also was senior linesman in the 1982 FA Cup Final.

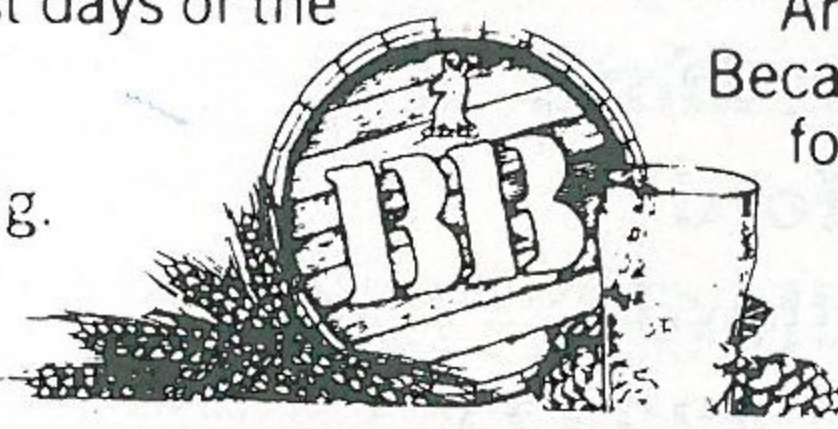
Married, with one son, he is a Senior Foreman in Government Workshops and is interested in marathon running, chess and local football competitions.

# THE LOCAL TASTE AND HOW TO SATISFY IT

We're very definite about our taste in beer around here. A clear light pint is what we look for; with a good, clean smack of malt and hops.

And there's only one name that really satisfies the local taste — BB. The light beer first brewed in Luton during the darkest days of the War by J. W. Green.

Only the finest hops and good, ripe barley go into the making. Then the brew is matured to exactly the right degree to give you a bright refreshing pint with a sound, full flavour.



WHITBREAD

American servicemen in local wartime bases declared that BB, chilled, was the nearest taste to Stateside draught.

It went down well when Syd Owen ruled the Hatters.

And it's been going down well ever since. Because BB is brewed with a proper respect for quality. To keep up the traditions we value round here.



Book Your Summer Holidays Early Through Your Local Tour Operator  
Brochures Now Available.

**Silvoir Holidays Ltd**  
190 Camden Hill Road  
London W8  
Tel: 01 221 6298

For all Building requirements contact:  
**ALLSOP BUILDING SERVICES**  
ALLSOP WINDOWS  
ALLSOP ROOFING  
ALLSOP MINI SKIP HIRE

**WHA** **W. H. ALLSOP & SONS**  
(BUILDERS) LTD.

153 New Town Street,  
Luton LU1 3ED.  
Tel: Luton 20011/23472.

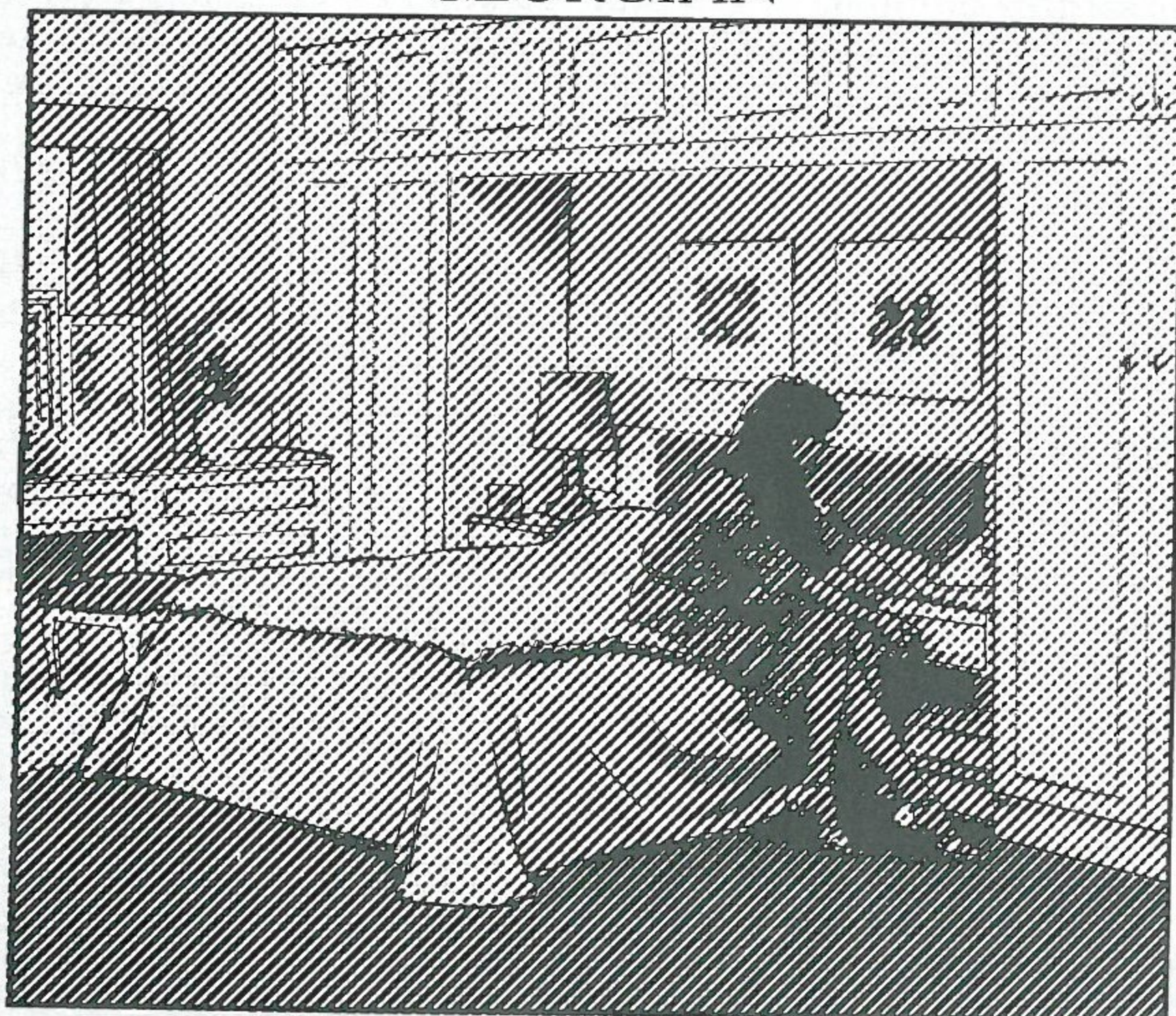


# Welcome

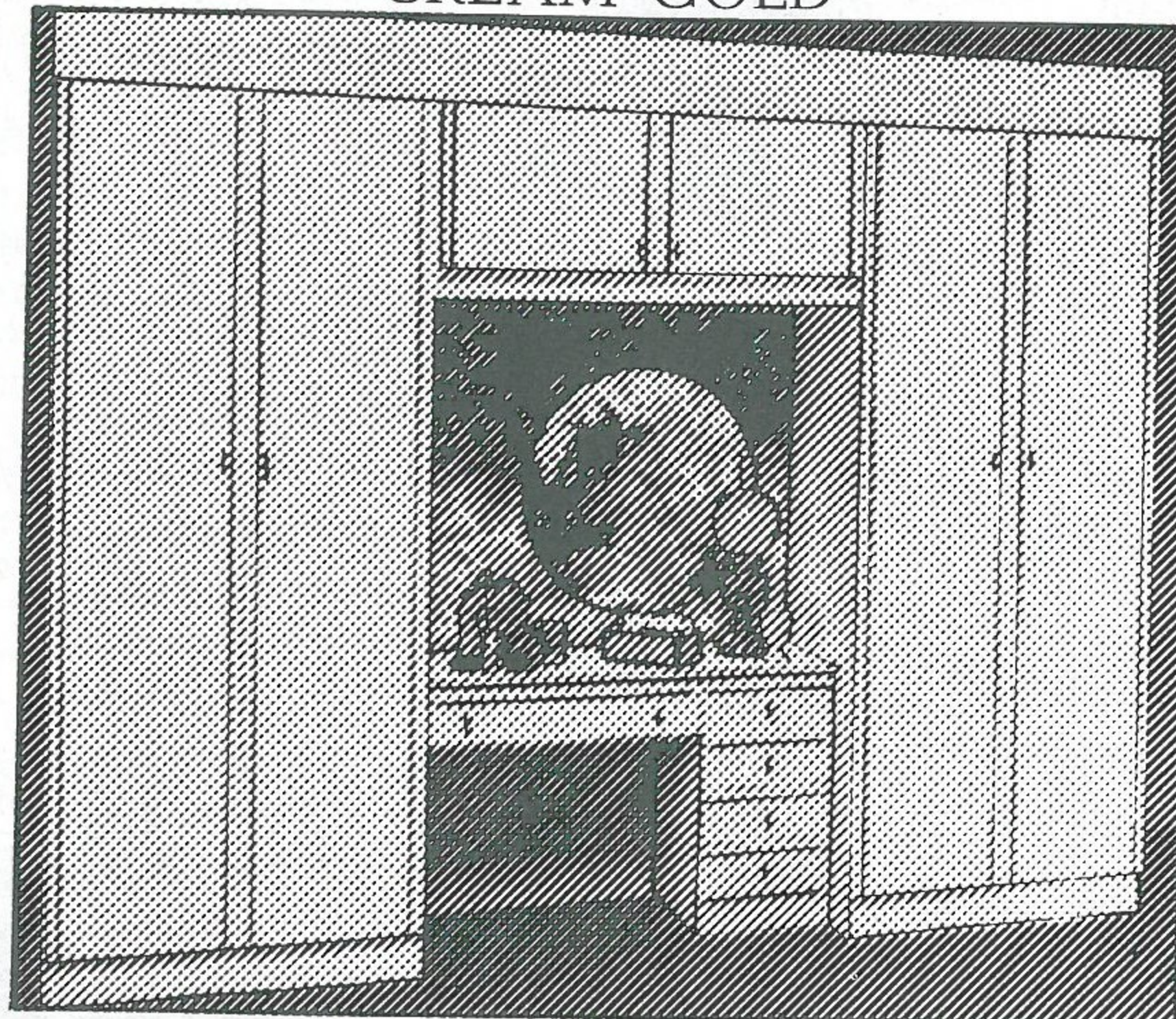
TO THE  
WONDERFUL WORLD  
OF WALLSPAN



GEORGIAN



CREAM GOLD



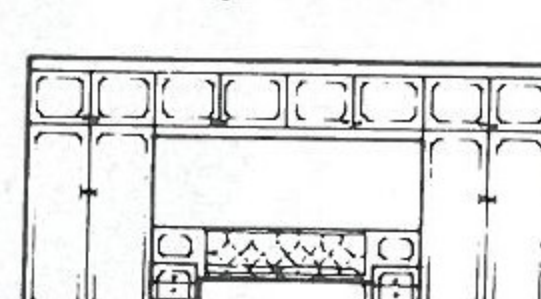
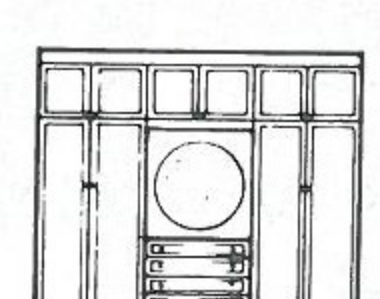
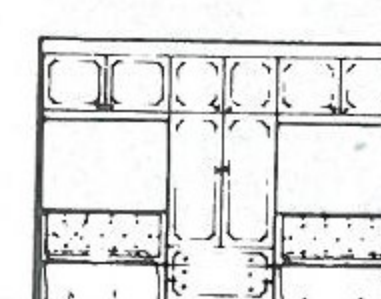
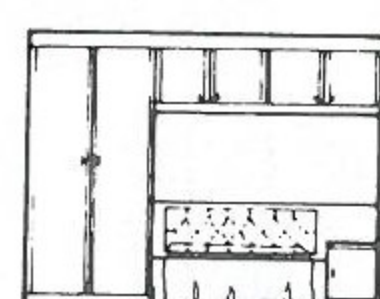
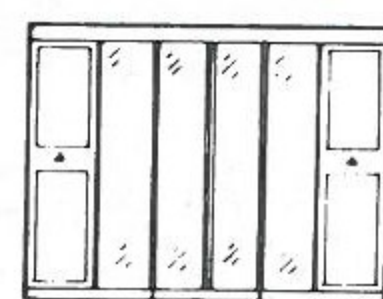
In the Wallspan World of fitted bedrooms it's the only place you get

**WALLSPAN CHOICE** 100's of designs and styles to choose from and shown in our showrooms

**WALLSPAN CARE** No pushy salesmen just helpful designers to plan your bedroom to suit you and your budget. In our showroom or in the comfort of your home. All without obligation.

**WALLSPAN SERVICE** Free design, delivery and fitting. Guaranteed installation date usually within 3 weeks.

Just a few of the design layouts that have proved so popular.



**WALLSPAN PRICE** The best in the UK and cheaper in many cases than you can fit a bedroom yourself. The widest range of credit facilities available. All credit arranged through a leading finance house. The only company to produce a price list.

**CHOOSE WELL...  
CHOOSE WALLSPAN**

**JUST MADE FOR YOU**

Wallspan  
Bedrooms

**WELCOME TO THE WONDERFUL WORLD OF WALLSPAN AT WOOD GREEN, FINCHLEY, BARNET, GOLDERS GREEN, ENFIELD and throughout the UK.**

**LUTON** Unit 174, Bute Street, Arndale Centre, Beds. Tel: Luton 23015

**WATFORD** 17/19 Queens Road, Herts. Tel: Watford 38388

**STEVENAGE** 18 Market Place, Herts. Tel: Stevenage 724853

**BEDFORD** 59 Midland Road. Tel: Bedford 211327

**AYLESBURY** 17 High Street, Bucks. Tel: Aylesbury 84763

# LUTON LEISURE

## AN OCCASIONAL LOOK AT THE LUTON LEISURE SCENE

As many of you know, 1983 has been announced by the Sports Council, as the 50 plus year, and in Luton we have many activities for the over fifties.

One is swimming, which many regard as the finest exercise possible. At Luton Bath Centre, Bath Road, Luton on Monday and Tuesday and Friday in the afternoon from 2 p.m. there is a course specially arranged for adults.

In addition you may also go for the New Amateur Swimming Associations Award Scheme. If you swim 20,000 yards within six months, you will be awarded a bronze medal. The other awards are: Silver — 35,000 yards in 12 months; Gold — 65,000 yards in two years; Diamond — 150,000 yards in three years; Supreme — 7,000,000 yards in five years. Further details on the course and scheme can be obtained by telephoning Luton 20621.

If Luton Baths Centre is too far for you, there are swimming pools at Lewsey Park, Pastures Way, Luton (Luton 69355); Putteridge Recreation Centre, Putteridge Road, Stopsley (Luton 454062); Lea Manor Recreation Centre, Northwell Drive, Marsh Farm, Luton (Luton 588999).

Luton Regional Sports Centre has been catering for those not so young for some time — in the form of the Centre's Active Retirement Club, who were Luton Sports Club of the year in 1981. The club runs every Thursday between 9.30 a.m. and 11.30 a.m.

The Sports Centre have now formed another new club, called Sports 50 Club. Every Sunday afternoon between 3 p.m. and 5 p.m. for 50p members will be able to have sessions in badminton, carpet bowls, multigymn, yoga, table tennis,

darts, snooker, short tennis and movements to music.

Hightown Recreation Centre, Old Bedford Road, Luton, are also forming a 50 Plus Club on Mondays and Thursdays from 2 p.m. to 4 p.m. there are special snooker sessions, old tyme dancing on Fridays also from 2 p.m. to 4 p.m. and gentle exercises from 'Extend' on Tuesday between 10 a.m. and 12 noon. The cost is 28p per session.

There are plenty of facilities for activities also available at the Lewsey Community Centre, Landrace Road, Lewsey Farm, and Stockwood Park Golf Course, London Road.

Not forgetting the younger citizens, here are some dates for you to note.

5th April: Special hockey coaching course. Brengreen seven-a-side cricket tournament.

6th April: Special hockey coaching course. TSB netball tournament, special netball coaching course.

7th April: Evening Post-Echo football coaching course. Brengreen seven-a-side cricket tournament.

8th April: Special netball coaching course. Evening Post-Echo football coaching course.

31st May to 3rd June: Brengreen seven-a-side cricket tournament. Luton News cricket coaching course.

5th June: Dumpletons casting competition.

Ideas for new activities and competitions are always helpful and needed. If you have any or wish to obtain information on some of the activities taking place in the near future, please write to Mike Iacono, Marsh House, Bramingham Road, Luton (Luton 56879).



**Willis-Dawson Ltd**  
**Builders and Developers**  
**Leighton Buzzard**

**Tel: Leighton Buzzard 372557**

*Your local suppliers of printed polythene carrier bags, paper bags, and fashion carriers. In addition we offer a General Printing and Rubber Stamp Manufacturing Service.*



**Princess Packaging Ltd.**

HEATHFIELD WORKS, LEYTON ROAD, HARPENDEN, HERTS.  
 TEL. (05827)66806 OR 64431 (24 HR. SERVICE).

**Graham Ford**

*Your*  
**Comprehensive Builders Merchants**

Depots: at

Luton — Kingsway 31199  
 Dunstable — Beale Street 603111  
 Leighton Buzzard — Leighton Road 373486

**Cleandustrial Services Ltd**

**The Professional Approach to Your Cleaning Problems**

**84 Aldermans Hill N13**

# LOTTERY TOPICS

We are proud of the reputation that Luton Town are the biggest mail order suppliers of souvenirs in the Football League.

Our vast range of stocks are available from the Kenilworth Road commercial offices throughout the week and at selected vending points inside the stadium on matchdays.

But we realise that many supporters are too busy to pop in and see us which is why they take advantage of our mail order service.

While on the subject of souvenirs, may we remind you that the shop at the top of Oak Road is NOT connected with Luton Town FC. Many of our supporters believe we operate this shop. But genuine souvenirs are obtainable only from our offices and, by buying from there, you can be assured that you are purchasing top quality and helping the club.

Our extensive range of souvenirs is second to none, so why not pop in and see us or telephone Luton 30748 for details of our mail order service.

But souvenirs are not the only facility we offer from the offices. Advance ticket sales, travel details and all aspects of the club's lottery division are all handled from Kenilworth Road.

We are continuously looking for additional agents to join our lottery system. A visit to the offices will provide you with all the details.

**JOHN GORNALL**  
 Assistant Promotions Manager

# JOHN'S JOURNAL

The last time today's visitors were at Kenilworth Road was on the 26th October 1974 when, in front of 22,420 spectators, the result was a 1-1 draw.

Of the 22 players involved that day only one, Steve Perryman, is still connected with his club. The two teams were — Luton Town: Barber, Shanks, Thomson, Chambers, Litt, Garner, Hindson, Fern, Anderson, West, Aston. Spurs: Jennings, Evans, Knowles, Pratt, England, Naylor, Neighbour, Perryman, Chivers, Peters, Duncan. The goalscorers were Chivers and Aston.

Looking back through the records, I found games at Kenilworth Road have usually ended in a close encounter but not matches in Football Combination where I came across handsome victories always in favour of the visitors however.

I know many people of my own age group like to look back at teams in the late forties and dwell upon the names of the players of the era.

One such game was at Luton on the 24th October 1944 where a crowd of 26,496 saw a 0-0 draw

in a game where 12 internationals were on view. Teams: Luton Town: Streten (E), Cooke, Hughes (W), Soo (E), Gager, Owen (E), Wauch, Daniels, Billington, Brennan (I), Duncan (S). Spurs: Ditchburn (E), Tickeridge, Buckingham, Nicholson (E), Whitchurch, Burgess (W), Cox (E), Jordan, Dugmin (E), Bennett, Stevens. The attendance receipts that day were £2,762.18s.6d.

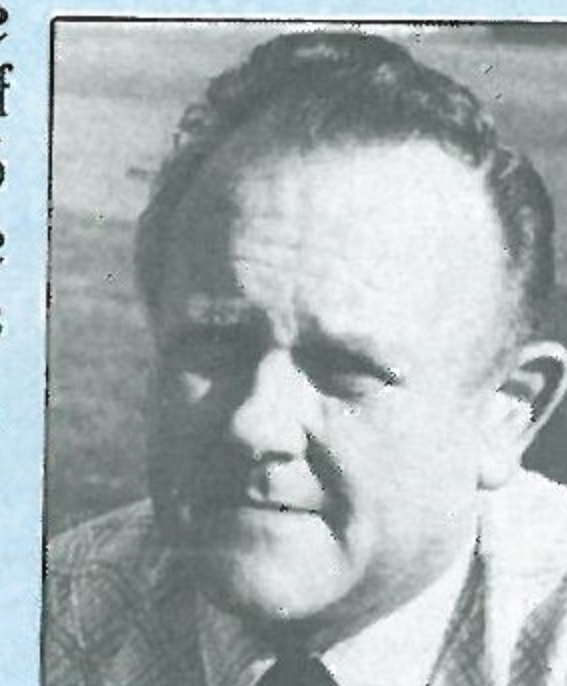
One interesting point was that the police charge that day was £17.10s.0d. That figure is way off the charges of today.

Tottenham Hotspur were formed in 1882 and turned to the professional ranks in 1895. In 1882 they started by playing on Tottenham Marshes and, three years later, moved in Northumberland Park and in 1898 moved to their present ground.

They have had six managers since the war, Joe Hulme, Arthur Rowe, Jimmy Anderson, Bill Nicholson, Terry Neil and Keith Burkenshaw.

Their most League appearances are recorded by Steve Perryman who, up to the end of last season, had clocked up 516 and that will certainly take some beating. Jimmy Greaves has scored most goals for the club, hitting 220 between 1961-70.

**JOHN WILKINSON**  
 Secretary



# Anglia Television

Proud to serve  
 the  
 East of England.





# HATTERS IN RESERVE

## SOUTHEND UTD 1 LUTON TOWN 4

This Southern Junior Floodlit game started at a frantic pace with Southend trying to put pressure on us at the back. We slowly came into the tie and, from a free-kick on the right, Mitchell Thomas headed us into the lead.

In the second-half with us thinking we had survived Southend's pressure, they equalised and had the best of the game for a little while but our character came through and we took the lead again through Mark Watts. After that, we applied the pressure and scored further goals from Richard Cadette and Ray Daniel.

TEAM: North (M), Breacker, Petts, Thomas, North (S), Shearer, Parker, Cadette, McConville, Daniel, Watts. Subs: Stein, Plummer.

## LUTON TOWN 2 READING 2

We started brightly in the South East Counties League game and took the lead with a well worked goal from Mark Watts. However, the Luton youngsters sat back and allowed Reading into the match when they equalised.

At the start of the second-half, sloppy defensive play allowed Reading to take the lead, but it served only to inject more fight into our lads and we fought back to equalise through Nigel Plummer.

TEAM: North (M), Tansley, Petts, Burke, Whitaker, Plummer, Parker, Loy, McConville, Ellisdon, Watts. Subs: Hamilton, Shearer.

## NEWPORT COUNTY 0 LUTON TOWN 2

We made further progress in the FA Cup with this victory in South Wales although it took us a while to settle on a difficult surface.

Newport made attempts to work the ball forward but we took the lead with a header from Stacey North. We kept plugging away and increased our lead with a goal from Gary Parker after the Newport keeper had made a good save from Cahal McConville. We should have scored additional goals in a game which pleased Youth coach John Moore for the teamwork our youngsters displayed.

# MINI SPONSOR

Today's mini sponsors are Cleandustrial Services Ltd and Hertfordshire BTR.

Cleandustrial need little introduction to our supporters as their chairman, Brian Cole, is a vice-president of the football club and Cleandustrial have sponsored four of our matches over the past three seasons and will be sponsoring two matches later in the season against Birmingham City and Stoke.

In contrast, it's Hertfordshire BTR's first visit to

the club in this capacity, although Stuart Garling, sales director and Phil Allen, general sales manager are both keen Luton Town supporters.

Hertfordshire BTR are a leading supplier of rubber components to the manufacturing industry particularly the automotive companies including Bedford Trucks, already a major sponsor of Luton Town FC.

Newly formed on 1st January this year as the result of the merger of two local companies, Miles Redfern and Herts Polymer, the company employs over 500 people at their Dunstable and Letchworth factories and they are looking forward to expanding their already substantial market both home and abroad.

We thank both Cleandustrial and Hertfordshire BTR for their support and hope they and their guests enjoy themselves.

# Wallspan Bedrooms TODAY'S SPONSOR

Terry Bailey of Wallspan Bedrooms is again today's match sponsor and we have taken this opportunity to reflect on his unstinting support.

**The Electronic Scoreboard**  
The finest in the Football League, erected at the ground in a sponsorship deal with Wallspan Bedrooms.

**Promotion Celebrations**  
Terry with John Carlisle MP at the celebration.

**The Commemorative Video Collection Box**

Produced to celebrate our promotion to the 1st Division last season, and sponsored by Wallspan Bedrooms. Terry Bailey seen here at a pre-launch get together with some of the players.

**The Wallspan Buses**  
Used by the Junior Hatters Club. Terry seen here with Brian Horton and Richard Money.





# BEHIND THE SCENES

By ROBERT HADGRAFT

The most familiar voice at Kenilworth Road in recent years has been that of match-day announcer John Buttle.

Essex-born John is a Luton banking executive, who has supported the Hatters since October 1946.

He first took his place in the Luton Town commentary box in 1961 when he began working for the Hospital Broadcasting service.

Several years later he took over the microphone to keep the crowd informed, and he has been PA announcer since.

John is never likely to get lonely in the commentary box, because it houses the electronic scoreboard console and is also used by the police and various other people as a base.

John describes the box as a 'communications centre' for the stadium during a match. As well as the link with local hospitals, John and his team can link with the X-Tel service which provides half and full time scores from around the country.

These are relayed to the fans by John as soon as they come to hand, along with any other important messages or announcements.

Messages often are presented to John during a game, and he has to use his experience and judgement to

decide when to make the announcement. Making an unimportant announcement during the play could be annoying and off-putting.

Obviously vital police messages have to be relayed quickly, but John will usually wait until the ball goes out of play or there is a suitable lull in the proceedings.

He recalls one occasion when he was asked to summon a 'Paul Smith' to the commentary box. Being such a common name, no fewer than five Paul Smiths duly made their way to John's side leaving him rather red-faced!

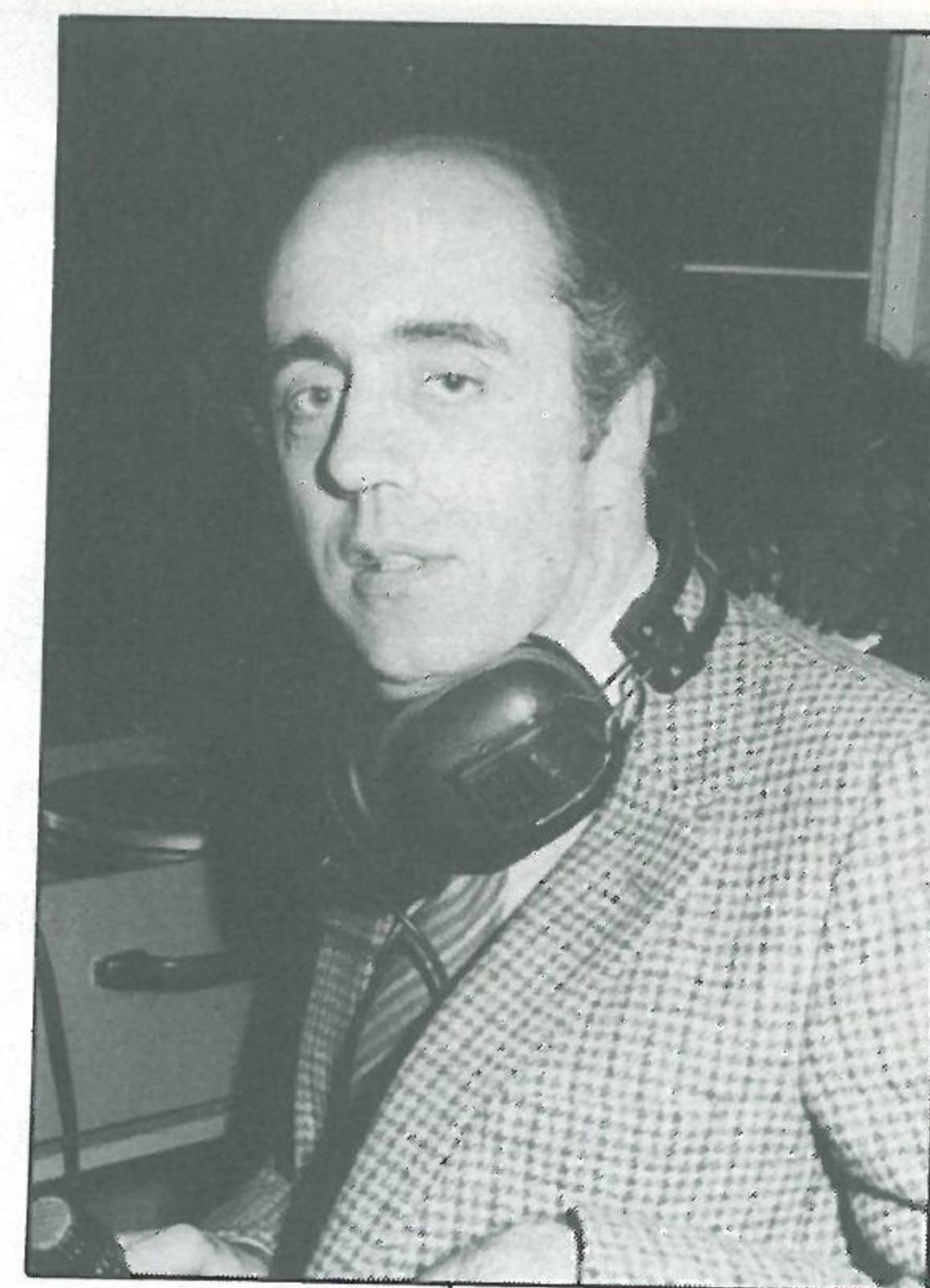
John organises pre-match music with the help of his pop-fan son Ian, and is also happy to read dedications sent in by supporters.

He is assisted by John Smylie and Rex Molyneux, in a job which sees him arrive at the ground about two hours before kick-off.

John is still closely linked with the hospital broadcasting service, which serves the Luton and Dunstable Hospital, St Mary's Hospital, and The Mount and Park Street OAP centres.

John is now chairman of the scheme, which involves a team of four, including former Town keeper Tony Read.

The scheme was formed in 1953 by the local Round Table



JOHN BUTTLE

and Toc H groups, and has provided its service now for 28 successive years.

Of the team of volunteers, Roy Shackleton and Bob Barrett still remain after being on the scene at the inception of the project.

Despite the advent of local radio's sports service, the commentary to hospitals remains very popular, as a recent survey illustrated.

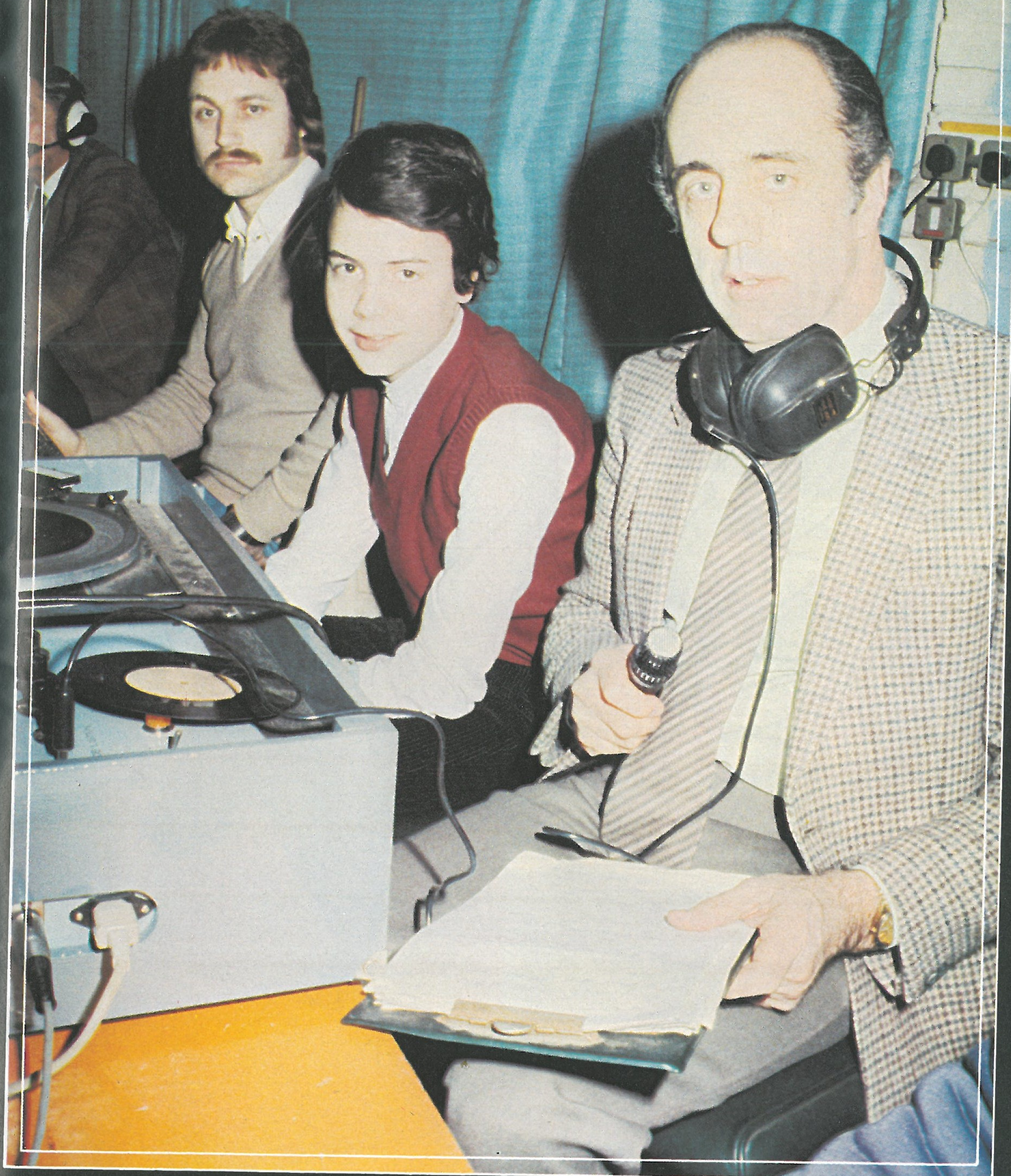
Prior to being accommodated at the back of the main stand, the commentators used an 'open' area near the current press box, and John recalls doing a commentary with snowflakes trickling down his neck!

Since 1946 John has witnessed many fine games at Kenilworth Road, but one which particularly stands out for him was the FA Cup-tie with Manchester City some 20 years ago — when Denis Law hit six goals for City, only for the match to be abandoned.

John, who once sold programmes at the ground, played in local amateur soccer as a young man, and also tried his hand at refereeing for a spell.

He is keen on golf and fishing, and is married to Heath, and the couple have a daughter Jane, 19, and son Ian, 14.

## COLOUR SHOT





# ACTION



## WEST HAM UNITED 2 LUTON TOWN 3

Anyone who thought results were a foregone conclusion should have been at Upton Park for our last away League game.

A superb hat-trick from Paul Walsh destroyed the Hammers and gave us three extremely welcome and thoroughly deserved points.

Top left: Bang . . . Walsh knocks in his first goal to equalise.

Above: Bang . . . It's on its way again as Walsh hits the winner in the dying seconds.

Far left: Bang . . . It's almost there, but not quite. David Moss almost scores with a powerful drive.

Left: Move over . . . Geoff Pike moves in for possession with hat-trick hero Walsh.





# TOTTENHAM HOTSPUR

## TOTTENHAM'S DISASTROUS AWAY FORM

Spurs, who have failed to score in their last eight away League games, are hoping the return of Argentinian star Ossie Ardiles will help them remedy their sad run of away performances.

A frightening string of injuries has caused manager Keith Burkinshaw mountainous problems and Ossie's return provided one bright moment in an otherwise bleak spell.

Since winning 1-0 at Sunderland in September, Tottenham's away League results have gone: Swansea (0-2), Norwich (0-0), Aston Villa (0-4), Manchester United (0-1), Liverpool (0-3), Stoke (0-2), Arsenal (0-2) and West Ham (0-3).

During the early weeks of the season, when Tottenham looked set to make a bid for the League Championship, they won at Ipswich (2-1) but lost at Everton (1-3).

Lack of goals is an uncharacteristic problem for a team renowned for its skill and attacking flair. It can be laid down entirely to all those injuries which have made it almost impossible for Mr Burkinshaw to keep a settled team.

It's hoped that the gifted Ardiles will provide the steady influence in midfield and help the side to find its old rhythm. Ossie was a member of Argentina's World Cup winning team of 1978 and Spurs signed him from Huracan shortly afterwards. His unique style made him an instant success in English football but, after joining Argentina's World Cup squad last year, the outbreak of war in the Falklands placed him in an impossible position.

It was initially stated that he would never play at Spurs

again and he started this season on loan to French club Paris St-Germain. But, shortly before Christmas, he delighted all British fans by announcing that he would, indeed, be rejoining Spurs and we offer him a warm welcome to Kenilworth Road this afternoon, although it seemed certain he would miss last week's Cup-tie.

When Ardiles originally joined Spurs in 1978, the £750,000 fee included another Argentine international, Ricky Villa. Ricky, who scored twice for Spurs in the 1981 FA Cup final replay but who was forced to drop out of last season's final due to the war, was signed from Racing Club.

Because of injuries, five other players have been included in midfield — England international Glenn Hoddle and Gary Mabbutt plus Mike Hazard, Steve Perryman and Garry Brooke.

Hoddle has been a regular member of the Spurs' side for six seasons and his injury problems this season came at a most unfortunate time for Spurs and England. Glenn won his 13th England cap during the World Cup finals in Spain and had been looking forward to the chance of establishing himself in international football.

Happily he reappeared in the England team against Luxembourg as substitute, celebrating with a typical long-range volleyed goal.

Mabbutt's sensational rise was completed when he won his first England cap this season. Last season he was in the Third Division with Bristol Rovers but Spurs signed him for £125,000 during the summer. Gary made his England debut in the unusual position of right-back and

then enjoyed another fine game in midfield when England defeated Greece 3-0. He won a third cap against Luxembourg.

Hazard, who got his chance in the First Division three seasons ago, has been holding a fairly regular place for the past year.

Perryman is more usually seen at full-back these days but he moved back into his original position during the injury crisis. Perryman has been a member of Spurs' senior side since making his debut in 1969. He spent his early years as a midfielder player, and was capped by the England Under-23s in that position, but he has now developed into an outstanding defender. He has now smashed the club record for League appearances, reaching the magnificent total of 530 at Christmas.

Brooke, blooded two seasons ago, has been quite a consistent member of the side this term.

Steve Archibald and Garth Crooks are the two strikers. Archibald, who has been capped by Scotland on 20 occasions, began his career with Clyde and moved on to Aberdeen in 1977. Tottenham paid £800,000 for him in 1980 and he hit 25 goals in his first season. He is currently one of the club's leading scorers with eight goals before last Saturday.

Crooks, top scorer with 18 goals last season, is well into double figures this term. Garth scored 22 goals in his first season after joining the club from Stoke for £700,000 during the 1980 close season and he has now played for England at 'B' and Under-21 levels.

Winger Tony Galvin has been another of Spurs' injury

victims. A Spurs' discovery, Tony got his first team chance in 1978-79. Earlier this season his skill down the left flank was recognised when he played for the Republic of Ireland against Holland.

Ian Crook, a youngster who made his League debut last season, has also appeared in attack.

The defence has also been continually under change as Perryman, former Luton player Paul Price, Paul Miller, John Lacy, Chris Hughton, Graham Roberts, Gary O'Reilly, Giorgio Mazon and Pat Corbett have all appeared in the back four.

Price needs little introduction here at Kenilworth Road where he spent ten years as a professional. Paul moved on to Tottenham in 1981 for a fee of £250,000 and this season he won his 16th full cap for Wales.

Miller, who can also play in midfield, developed in the White Hart Lane junior teams and made his first team bow four seasons ago. He spent the last three seasons as a member of the back four.

Lacy's first professional club was Fulham and he made almost 200 senior appearances for the Cottagers before transferring to Spurs for £200,000 in 1978.

Hughton, who won his 14th Republic of Ireland cap against Spain in November, developed in Spurs' junior teams and made his League debut three seasons ago.

Injury-hit Roberts was signed from Weymouth for £55,000 in 1980. He was eased into the Spurs' team as substitute at Stoke in October 1980 and quickly established himself in the side.

O'Reilly, who made his first League appearance two seasons ago, has been given the occasional game in defence this year. Mazon had been playing in the reserves since making his first four League appearances in 1980-81. He was recalled to the side at West Ham on New Year's Day. Corbett, who made a few appearances at full-back last season, is sometimes named as substitute.

Goalkeeper Ray Clemence, capped 60 times by England, joined Spurs for £300,000 in 1981 after 11 glorious years with Liverpool. He began his career with Scunthorpe United and Bill Shankly signed him in 1967.

Winners of the FA Cup for the past two seasons, Tottenham last season became the only club ever to appear in two Wembley finals in the same season. They lost 1-3 to Liverpool after extra-time in the Milk Cup final.

Spurs have also taken part in the last two FA Charity Shield matches so, including replays, in the past 20 months they have played at Wembley on seven occasions.

Spurs are the only side to have appeared in seven FA Cup finals and won the lot! They have also won the League Championship twice and the League Cup twice.

In 1963 they became the first English club to win a European trophy when they lifted the Cup-Winners' Cup. In 1972 they won the UEFA Cup.

The club celebrated its centenary in 1982. Now, with a century of achievements duly recorded, Spurs go marching on again. And truly Keith Burkinshaw and his men will be interested only in what they can achieve in 1982-83 and beyond.



Back row (left to right): P. Price, G. O'Reilly, M. Falco, A. Parks, R. Clemence, J. Lacy, A. Galvin, P. Miller, K. Oliver (youth team manager). Middle row: R. Stepney (reserve team manager), C. Hughton, I. Crook, P. Corbett, M. Varney (physio), S. Archibald, G. Crooks, G. Roberts, J. Wallis (trainer). Front row: G. Mabbutt, M. Hazard, G. Hoddle, P. Shreeves (assistant manager), K. Burkinshaw (manager), S. Perryman (captain), G. Brooke, T. Gibson.

By TONY PULLEIN



| Opponents                     | Result | Attendance | Points | Position | Findlay | Stephens | Money | Horton | Goodyear | Donaghy | Hill | Stein | Walsh | Antic | Moss | Turner | Kellock | Judge | Fuccillo | Thomas | Bunn | Geddis | Watts |  | Own Goal |
|-------------------------------|--------|------------|--------|----------|---------|----------|-------|--------|----------|---------|------|-------|-------|-------|------|--------|---------|-------|----------|--------|------|--------|-------|--|----------|
| Goals Scored                  |        |            |        |          |         |          |       | 2      | 2        | 2       | 4    | 15    | 11    |       | 8    | 1      | 2       |       | 2        |        | 1    |        |       |  | 1        |
| 1982                          |        |            |        |          |         |          |       |        |          |         |      |       |       |       |      |        |         |       |          |        |      |        |       |  |          |
| August                        |        |            |        |          |         |          |       |        |          |         |      |       |       |       |      |        |         |       |          |        |      |        |       |  |          |
| 28 Tottenham Hotspur          | 2 - 2  | 39,180     | 1      | —        | 1       | 2        | 3     | 4      | 5        | 6       | 7    | 8●    | 9     | 10    | 11   |        |         |       |          |        |      |        |       |  | *        |
| 31 West Ham United            | 0 - 2  | 13,403     | 1      | —        | 1       | 2        | 3     | 4      | 5        | 6       | 7    | 8     | 9     | 10    | 11   |        |         |       |          |        |      |        |       |  |          |
| September                     |        |            |        |          |         |          |       |        |          |         |      |       |       |       |      |        |         |       |          |        |      |        |       |  |          |
| 4 Notts County                | 5 - 3  | 9,071      | 4      | —        | 1       | 2        | 3     | 4      | 5        | 6       | 7●   | 8     | 9●●   | 10    | 11●  |        |         |       |          |        |      |        |       |  |          |
| 8 Aston Villa                 | 1 - 4  | 18,823     | 4      | —        | 1       | 2        | —     | 4      | 5        | 6       | 7    | 8     | 9     | 10+   | 11●  | 3      | 12      |       |          |        |      |        |       |  |          |
| 11 Liverpool                  | 3 - 3  | 33,694     | 5      | 18       | 1+      | 2        | 3     | 4      | 5        | 6       | 7    | 8●●   | 9     | 12    | 11●  | 10     | —       |       |          |        |      |        |       |  |          |
| 18 Brighton & Hove Albion     | 5 - 0  | 11,342     | 8      | 11       | —       | 2        | 3     | 4      | 5        | 6       | 7    | 8●●   | 9     | —     | 11●  | 10●    | —       | 1     |          |        |      |        |       |  |          |
| 25 Stoke City                 | 4 - 4  | 18,475     | 9      | 12       | —       | 2        | 3     | 4      | 5        | 6●      | 7    | 8●●   | 9+    | 12    | 11   | 10     | —       | 1     |          |        |      |        |       |  |          |
| October                       |        |            |        |          |         |          |       |        |          |         |      |       |       |       |      |        |         |       |          |        |      |        |       |  |          |
| 2 Manchester United           | 1 - 1  | 17,009     | 10     | 12       | 1       | 2        | 3     | 4      | 5        | 6       | 7●   | 8     | 9     | 12    | 11   | 10+    | —       | —     |          |        |      |        |       |  |          |
| 5 Charlton Athletic (MC2-1L)  | 3 - 0  | 7,030      | —      | —        | 1       | 2        | 3     | 4      | 5        | 6       | 7    | 8●    | 9     | —     | 11   | —      | —       | —     | 10●      |        |      |        |       |  |          |
| 9 Birmingham City             | 3 - 2  | 13,772     | 13     | 8        | 1       | 2        | 3     | 4      | 5        | 6       | 7    | 8●    | 9●    | —     | 11●  | —      | —       | —     | 10       |        |      |        |       |  |          |
| 16 Ipswich Town               | 1 - 1  | 13,378     | 14     | 11       | 1       | 2        | 3     | 4      | 5        | 6       | 7    | 8●    | 9     | —     | 11   | —      | —       | —     | 10       |        |      |        |       |  |          |
| 23 West Bromwich Albion       | 0 - 1  | 16,488     | 14     | 13       | —       | 2        | 3     | 4      | 5        | 6       | 7    | 8     | 9     | —     | 11   | 12     | —       | 1     | 10+      |        |      |        |       |  |          |
| 26 Charlton Athletic (MC2-2L) | 0 - 2  | 5,973      | —      | —        | 1       | —        | 3     | 4      | 5        | 6       | 7    | 8     | 9     | —     | 11   | 10     | —       | —     | —        | 2      |      |        |       |  |          |
| 30 Nottingham Forest          | 0 - 2  | 12,648     | 14     | 16       | 1       | —        | 3     | 4      | 5        | 6       | 7    | 8     | 9     | 12    | 11   | 2      | 10+     | —     | —        |        |      |        |       |  |          |
| November                      |        |            |        |          |         |          |       |        |          |         |      |       |       |       |      |        |         |       |          |        |      |        |       |  |          |
| 6 Arsenal                     | 2 - 2  | 16,597     | 15     | 17       | 1       | —        | 3     | 4      | 5        | 6       | 7    | 8     | 9●    | 12    | 11●  | 2+     | —       | —     | 10       | —      |      |        |       |  |          |
| 9 Blackpool (MC3)             | 4 - 2  | 6,409      | —      | —        | —       | 2        | 3     | 4      | 5        | 6+      | —    | 8     | 9     | —     | 11●  | —      | 7●●     | 1     | 10       | —      | 12●  |        |       |  |          |
| 13 Sunderland                 | 1 - 1  | 14,238     | 16     | 17       | —       | 2        | 3     | 4      | —        | 6       | 7    | 8     | 9     | —     | 11●  | 5      | 10+     | 1     | —        | —      | 12   |        |       |  |          |
| 20 Coventry City              | 2 - 4  | 9,644      | 16     | 18       | 1       | 2        | 3     | 4●     | 5        | —       | 7    | 8●    | 9     | 10    | 11   | 6      | —       | —     | —        | —      |      |        |       |  |          |
| 27 Southampton                | 3 - 3  | 11,196     | 17     | 18       | 1       | 2        | 3+    | 4      | 5●       | 6       | 7●   | 8●    | 9     | 12    | 11   | 10+    | —       | —     | —        | —      |      |        |       |  |          |
| 30 Tottenham Hotspur (MC4)    | 0 - 1  | 27,461     | —      | —        | 1       | 2        | 3     | 4      | 5        | 6       | 7    | 8     | 9     | 12    | 11   | 10     | —       | —     | —        | —      |      |        |       |  |          |
| December                      |        |            |        |          |         |          |       |        |          |         |      |       |       |       |      |        |         |       |          |        |      |        |       |  |          |
| 4 Swansea City                | 0 - 2  | 9,556      | 17     | 19       | 1       | 2        | 3     | 4      | 5        | 6       | 7    | 8     | 9     | 12    | 11   | 10+    | —       | —     | —        | —      |      |        |       |  |          |
| 11 Manchester City            | 3 - 1  | 11,013     | 20     | 19       | 1       | 2        | 3     | 4      | 5        | 6       | 7    | 8●●   | 9●    | —     | 11   | 10     | —       | —     | —        | —      |      |        |       |  |          |
| 18 Everton                    | 0 - 5  | 14,982     | 20     | 19       | 1       | 2        | 3     | 4      | 5        | 6       | 7    | —     | 9     | —     | 11   | 10+    | —       | —     | 12       | —      | 8    |        |       |  |          |
| 27 Watford                    | 1 - 0  | 21,145     | 23     | 17       | 1       | 2        | 3     | 4      | 5●       | 6       | 7    | —     | 9     | —     | 11   | —      | —       | 10    | —        | —      | 8    |        |       |  |          |
| 28 Norwich City               | 0 - 1  | 21,367     | 23     | 17       | 1       | 2        | 3     | 4      | 5        | —       | 7    | —     | 9     | 12    | 11   | 6      | —       | —     | 10+      | —      | 8    |        |       |  |          |
| 1983                          |        |            |        |          |         |          |       |        |          |         |      |       |       |       |      |        |         |       |          |        |      |        |       |  |          |
| January                       |        |            |        |          |         |          |       |        |          |         |      |       |       |       |      |        |         |       |          |        |      |        |       |  |          |
| 1 Coventry City               | 1 - 2  | 13,072     | 23     | 20       | 1       | 2        | 3     | 4      | 5        | 6●      | 7    | —     | 9     | 12    | 11   | —      | —       | —     | 10+      | —      | 8    |        |       |  |          |
| 4 West Ham United             | 3 - 2  | 21,435     | 26     | 17       | 1       | 2        | —     | 4      | 5        | 6       | 7    | —     | 9●●   | —     | 11   | 10     | 12      | —     | —        | 3      | 8+   |        |       |  |          |
| 8 Peterborough (FAC3)         | 3 - 0  | 11,151     | —      | —        | 1       | 2        | —     | 4●     | 5        | 6       | 7●   | —     | 9●    | —     | —    | 10     | —       | —     | 3        | 8      |      |        | 11    |  |          |
| 15 Tottenham Hotspur          |        |            |        |          |         |          |       |        |          |         |      |       |       |       |      |        |         |       |          |        |      |        |       |  |          |
| 22 Brighton & Hove Albion     |        |            |        |          |         |          |       |        |          |         |      |       |       |       |      |        |         |       |          |        |      |        |       |  |          |
| 29 Manchester Utd (FAC4)      |        |            |        |          |         |          |       |        |          |         |      |       |       |       |      |        |         |       |          |        |      |        |       |  |          |
| February                      |        |            |        |          |         |          |       |        |          |         |      |       |       |       |      |        |         |       |          |        |      |        |       |  |          |
| 5 Liverpool                   |        |            |        |          |         |          |       |        |          |         |      |       |       |       |      |        |         |       |          |        |      |        |       |  |          |
| 12 Manchester United          |        |            |        |          |         |          |       |        |          |         |      |       |       |       |      |        |         |       |          |        |      |        |       |  |          |
| 19 Birmingham City            |        |            |        |          |         |          |       |        |          |         |      |       |       |       |      |        |         |       |          |        |      |        |       |  |          |
| 26 Ipswich Town               |        |            |        |          |         |          |       |        |          |         |      |       |       |       |      |        |         |       |          |        |      |        |       |  |          |
| March                         |        |            |        |          |         |          |       |        |          |         |      |       |       |       |      |        |         |       |          |        |      |        |       |  |          |
| 5 West Bromwich Albion        |        |            |        |          |         |          |       |        |          |         |      |       |       |       |      |        |         |       |          |        |      |        |       |  |          |
| 12 Nottingham Forest          |        |            |        |          |         |          |       |        |          |         |      |       |       |       |      |        |         |       |          |        |      |        |       |  |          |
| 19 Arsenal                    |        |            |        |          |         |          |       |        |          |         |      |       |       |       |      |        |         |       |          |        |      |        |       |  |          |
| 26 Sunderland                 |        |            |        |          |         |          |       |        |          |         |      |       |       |       |      |        |         |       |          |        |      |        |       |  |          |
| April                         |        |            |        |          |         |          |       |        |          |         |      |       |       |       |      |        |         |       |          |        |      |        |       |  |          |
| 2 Norwich City                |        |            |        |          |         |          |       |        |          |         |      |       |       |       |      |        |         |       |          |        |      |        |       |  |          |
| 4 Watford                     |        |            |        |          |         |          |       |        |          |         |      |       |       |       |      |        |         |       |          |        |      |        |       |  |          |
| 9 Aston Villa                 |        |            |        |          |         |          |       |        |          |         |      |       |       |       |      |        |         |       |          |        |      |        |       |  |          |
| 16 Notts County               |        |            |        |          |         |          |       |        |          |         |      |       |       |       |      |        |         |       |          |        |      |        |       |  |          |
| 23 Swansea City               |        |            |        |          |         |          |       |        |          |         |      |       |       |       |      |        |         |       |          |        |      |        |       |  |          |
| 30 Southampton                |        |            |        |          |         |          |       |        |          |         |      |       |       |       |      |        |         |       |          |        |      |        |       |  |          |
| May                           |        |            |        |          |         |          |       |        |          |         |      |       |       |       |      |        |         |       |          |        |      |        |       |  |          |
| 2 Stoke City                  |        |            |        |          |         |          |       |        |          |         |      |       |       |       |      |        |         |       |          |        |      |        |       |  |          |
| 7 Everton                     |        |            |        |          |         |          |       |        |          |         |      |       |       |       |      |        |         |       |          |        |      |        |       |  |          |
| 14 Manchester City            |        |            |        |          |         |          |       |        |          |         |      |       |       |       |      |        |         |       |          |        |      |        |       |  |          |
| 21 FA Cup Final               |        |            |        |          |         |          |       |        |          |         |      |       |       |       |      |        |         |       |          |        |      |        |       |  |          |

THE  
PINK ELEPHANT  
FUN HOUSE  
LUTON  
SKIMPOT LANE, LUTON, BEDS.  
OPEN SIX NIGHTS A WEEK  
Mon-Weds 7.30pm-midnight    Thurs-Sat 7.30pm-1.00am  
STRICTLY OVER 18's ONLY  
Casual dress but smart (no jeans or trainers)  
THE MANAGEMENT RESERVE FULL RIGHTS OF  
ADMISSION  
Enquiries: Luton 594144

- + Player replaced by substitute

\* Own Goal

● **Goalscorer**

Home fixtures in **bold**

Copyright of The Football League

## FOOTBALL COMBINATION FIXTURES 1982-83

|       |    |                          |      |       |
|-------|----|--------------------------|------|-------|
| Aug.  | 28 | <b>Watford</b>           | 7.30 | 0 - 1 |
| Sept. | 1  | Norwich City             |      | 3 - 0 |
| Sept. | 13 | <b>Brighton</b>          | 7.30 | 1 - 0 |
| Sept. | 22 | Oxford United            |      | 3 - 1 |
| Sept. | 27 | <b>West Ham United</b>   | 7.30 | 1 - 1 |
| Oct.  | 9  | <b>Birmingham City</b>   | 3.00 | 0 - 3 |
| Oct.  | 16 | Ipswich Town             |      | 0 - 2 |
| Oct.  | 23 | <b>Q.P.R.</b>            | 3.00 | 0 - 2 |
| Nov.  | 6  | Arsenal                  |      | 1 - 4 |
| Nov.  | 15 | <b>Leicester City</b>    | 2.15 | 1 - 1 |
| Nov.  | 20 | <b>Swansea City</b>      | 3.00 | 1 - 0 |
| Dec.  | 14 | Chelsea                  |      | 1 - 5 |
| Dec.  | 20 | <b>Charlton Athletic</b> | 2.15 | 3 - 2 |
| Dec.  | 29 | <b>Reading</b>           | 2.15 | 1 - 2 |
| Jan.  | 3  | <b>Fulham</b>            | 2.15 | 4 - 0 |
| Jan.  | 10 | <b>Tottenham Hotspur</b> | 2.15 | 0 - 2 |
| Jan.  | 15 | Watford                  |      |       |
| Jan.  | 24 | <b>Oxford United</b>     | 2.15 |       |
| Jan.  | 29 | Swansea City             |      |       |
| Feb.  | 5  | Brighton & Hove Albion   |      |       |
| Feb.  | 7  | Millwall                 |      |       |
| Feb.  | 14 | <b>Crystal Palace</b>    | 2.15 |       |
| Feb.  | 22 | Birmingham City          |      |       |
| Feb.  | 26 | <b>Ipswich Town</b>      | 3.00 |       |
| Mar.  | 8  | <b>Q.P.R.</b>            |      |       |
| Mar.  | 14 | <b>Millwall</b>          | 7.30 |       |
| Mar.  | 19 | <b>Arsenal</b>           | 3.00 |       |
| Mar.  | 30 | Leicester City           |      |       |
| April | 2  | Reading                  |      |       |
| April | 9  | Tottenham Hotspur        |      |       |
| April | 11 | <b>Norwich City</b>      | 7.30 |       |
| April | 18 | <b>Swindon Town</b>      | 7.30 |       |
| April | 26 | Bristol Rovers           |      |       |
| April | 30 | <b>Southampton</b>       | 3.00 |       |
| May   | 3  | West Ham United          |      |       |
| May   | 10 | Charlton Athletic        |      |       |
| May   | 16 | <b>Chelsea</b>           | 7.30 |       |
|       |    | To be arranged           |      |       |
|       |    | Crystal Palace (a)       |      |       |
|       |    | Fulham (a)               |      |       |
|       |    | Southampton (a)          |      |       |
|       |    | Swindon Town (a)         |      |       |
|       |    | <b>Bristol Rovers</b>    | (h)  |       |

## DIVISION ONE HOT SHOTS

(including League, FA Cup and Milk Cup)

|                                 |           |
|---------------------------------|-----------|
| Ian Rush (Liverpool)            | 21        |
| Bob Latchford (Swansea)         | 16        |
| <b>Brian Stein (Luton Town)</b> | <b>15</b> |
| Luther Blissett (Watford)       | 13        |
| Kenny Dalglish (Liverpool)      | 13        |
| John Wark (Ipswich)             | 13        |

## FIRST DIVISION ATTENDANCES 1982-83

|                   | <i>Highest</i> | <i>Average</i>    |
|-------------------|----------------|-------------------|
| Manchester United | 57,334         | 43,598(12)        |
| Liverpool         | 44,664         | 34,926(12)        |
| Tottenham         | 42,215         | 30,266(12)        |
| Arsenal           | 51,497         | 27,714(12)        |
| Manchester City   | 29,617         | 25,312(11)        |
| West Ham United   | 33,383         | 24,462(12)        |
| Aston Villa       | 35,487         | 23,932(12)        |
| Everton           | 52,741         | 23,681(11)        |
| Ipswich Town      | 29,596         | 20,843(11)        |
| Watford           | 25,669         | 19,109(12)        |
| Southampton       | 22,025         | 18,666(11)        |
| Stoke City        | 29,501         | 18,151(12)        |
| Nott'm Forest     | 24,487         | 18,013(11)        |
| Norwich City      | 22,909         | 17,364(12)        |
| Sunderland        | 35,041         | 17,362(11)        |
| Birmingham City   | 43,864         | 17,117(11)        |
| W. B.A.           | 25,300         | 15,989(11)        |
| Brighton          | 27,794         | 14,196(12)        |
| <b>Luton Town</b> | <b>21,145</b>  | <b>13,580(11)</b> |
| Swansea City      | 20,322         | 12,868(11)        |
| Notts County      | 23,065         | 10,977(12)        |
| Coventry          | 18,938         | 10,254(12)        |

*Up to and incl. Sat. 8th Jan.*



**Today's Mitre Match Ball is sponsored by:**

**WILLIS-DAWSON**  
*Builders and Developers*  
**LEIGHTON BUZZARD**  
**BEDFORDSHIRE**

## DIVISION ONE TABLE 1982-83

|                   | Home      |          |          |          |           |           |          |          | Away     |           |           |           |
|-------------------|-----------|----------|----------|----------|-----------|-----------|----------|----------|----------|-----------|-----------|-----------|
|                   | P         | W        | D        | L        | F         | A         | W        | D        | L        | F         | A         | Pts       |
| Liverpool         | 23        | 10       | 2        | 0        | 40        | 12        | 5        | 3        | 3        | 18        | 9         | 50        |
| Watford           | 23        | 9        | 2        | 1        | 28        | 7         | 3        | 2        | 6        | 14        | 18        | 40        |
| Manchester United | 23        | 8        | 4        | 0        | 22        | 5         | 3        | 3        | 5        | 9         | 13        | 40        |
| Nottingham Forest | 23        | 8        | 2        | 1        | 22        | 8         | 4        | 2        | 6        | 17        | 23        | 40        |
| West Ham United   | 23        | 8        | 1        | 3        | 28        | 14        | 4        | 0        | 7        | 14        | 21        | 37        |
| Coventry City     | 23        | 9        | 2        | 1        | 21        | 7         | 2        | 2        | 7        | 11        | 22        | 37        |
| Aston Villa       | 23        | 9        | 1        | 2        | 27        | 11        | 2        | 1        | 8        | 7         | 20        | 35        |
| W.B.A.            | 23        | 7        | 3        | 1        | 25        | 11        | 2        | 3        | 7        | 11        | 23        | 33        |
| Tottenham Hotspur | 23        | 8        | 2        | 2        | 30        | 12        | 2        | 1        | 8        | 4         | 21        | 33        |
| Manchester City   | 23        | 7        | 3        | 1        | 16        | 9         | 2        | 2        | 8        | 13        | 27        | 32        |
| Ipswich Town      | 23        | 5        | 1        | 5        | 19        | 15        | 3        | 6        | 3        | 18        | 14        | 31        |
| Stoke City        | 23        | 7        | 3        | 2        | 24        | 16        | 2        | 1        | 8        | 11        | 20        | 31        |
| Everton           | 23        | 6        | 4        | 1        | 24        | 12        | 2        | 2        | 8        | 14        | 20        | 30        |
| Arsenal           | 23        | 5        | 3        | 3        | 16        | 13        | 3        | 3        | 6        | 12        | 19        | 30        |
| Southampton       | 23        | 6        | 2        | 3        | 17        | 12        | 2        | 3        | 7        | 11        | 26        | 29        |
| Notts County      | 23        | 6        | 2        | 4        | 18        | 16        | 2        | 2        | 7        | 13        | 26        | 28        |
| <b>Luton Town</b> | <b>23</b> | <b>4</b> | <b>4</b> | <b>3</b> | <b>22</b> | <b>17</b> | <b>2</b> | <b>4</b> | <b>6</b> | <b>19</b> | <b>31</b> | <b>26</b> |
| Norwich City      | 23        | 6        | 2        | 4        | 17        | 12        | 1        | 3        | 7        | 8         | 24        | 26        |
| Brighton          | 23        | 6        | 4        | 2        | 16        | 10        | 0        | 2        | 9        | 5         | 32        | 24        |
| Swansea City      | 23        | 6        | 2        | 3        | 17        | 11        | 0        | 3        | 9        | 12        | 25        | 23        |
| Sunderland        | 23        | 3        | 5        | 3        | 15        | 11        | 2        | 3        | 7        | 10        | 26        | 23        |
| Birmingham City   | 23        | 4        | 4        | 3        | 14        | 14        | 0        | 7        | 5        | 4         | 18        | 23        |

*Up to and including Tuesday 4th January 1983*

## DIVISION ONE APPS & GOALS 1982-83

|           | FA/        |           |            |
|-----------|------------|-----------|------------|
|           | <i>App</i> | <i>MC</i> | <i>Gls</i> |
| Antic     | 9(8)       | — (1)     | —          |
| Bunn      | 1(1)       | 1(1)      | 1          |
| Donaghy   | 21         | 5         | 2          |
| Findlay   | 19         | 4         | —          |
| Fuccillo  | 7(1)       | 2         | 2          |
| Geddis    | 4          | —         | —          |
| Goodyear  | 22         | 5         | 2          |
| Hill      | 23         | 4         | 4          |
| Horton    | 23         | 5         | 2          |
| Judge     | 4          | 1         | —          |
| Kellock   | 2(2)       | 1         | 2          |
| Money     | 21         | 4         | —          |
| Moss      | 23         | 4         | 8          |
| Stein     | 18         | 4         | 15         |
| Stephens  | 21         | 4         | —          |
| Thomas    | 1          | 2         | —          |
| Turner    | 14(1)      | 3         | 1          |
| Walsh     | 23         | 5         | 11         |
| Watts     | —          | 1         | —          |
| Own Goals | —          | —         | 1          |

*Up to and incl. Sat. 8th Jan.*

## COMBINATION TABLE 1982-83

|                     | P         | W        | D        | L        | F         | A         | Pts       |
|---------------------|-----------|----------|----------|----------|-----------|-----------|-----------|
| Tottenham Hotspur   | 21        | 13       | 4        | 4        | 51        | 24        | 30        |
| Queens Park Rangers | 17        | 13       | 3        | 1        | 46        | 16        | 29        |
| Watford             | 20        | 12       | 4        | 4        | 35        | 25        | 28        |
| Ipswich Town        | 20        | 10       | 5        | 5        | 37        | 28        | 25        |
| West Ham United     | 18        | 8        | 7        | 3        | 35        | 24        | 23        |
| Arsenal             | 18        | 8        | 4        | 6        | 31        | 24        | 20        |
| Birmingham City     | 17        | 9        | 2        | 6        | 29        | 23        | 20        |
| Crystal Palace      | 17        | 6        | 5        | 6        | 29        | 30        | 17        |
| Swansea City        | 18        | 8        | 1        | 9        | 26        | 32        | 17        |
| Millwall            | 20        | 4        | 9        | 7        | 29        | 36        | 17        |
| Chelsea             | 17        | 7        | 2        | 8        | 36        | 34        | 16        |
| Reading             | 18        | 7        | 2        | 9        | 32        | 32        | 16        |
| Norwich City        | 18        | 5        | 6        | 7        | 19        | 25        | 16        |
| Swindon Town        | 18        | 6        | 4        | 8        | 25        | 33        | 16        |
| <b>Luton Town</b>   | <b>17</b> | <b>6</b> | <b>2</b> | <b>9</b> | <b>21</b> | <b>28</b> | <b>14</b> |
| Leicester City      | 19        | 4        | 6        | 9        | 30        | 39        | 14        |
| Brighton            | 18        | 4        | 6        | 8        | 22        | 31        | 14        |
| Oxford United       | 16        | 5        | 2        | 9        | 24        | 34        | 12        |
| Charlton Athletic   | 16        | 2        | 8        | 6        | 22        | 34        | 12        |
| Southampton         | 16        | 3        | 5        | 8        | 26        | 28        | 11        |
| Fulham              | 14        | 4        | 3        | 7        | 17        | 25        | 11        |
| Bristol Rovers      | 15        | 3        | 4        | 8        | 24        | 35        | 10        |

*Up to and including Monday 10th January 1983*

## COMBINATION APPS & GOALS 1982-83

|            | <i>App</i> | <i>Gls</i> |
|------------|------------|------------|
| Aizlewood  | 4          | —          |
| Antic      | 7          | —          |
| Beasley    | 11         | —          |
| Breaker    | 11(3)      | 1          |
| Bunn       | 14         | 5          |
| Cadette    | 4          | —          |
| Cooke      | 3          | 1          |
| Daniel     | 12         | 1          |
| Findlay    | 1          | —          |
| Fuccillo   | 11         | 1          |
| Geddis     | 1          | —          |
| Goodyear   | 1          | —          |
| Heath      | 8          | —          |
| Kellock    | 12         | 1          |
| Judge      | 4          | —          |
| McConville | 1(1)       | —          |
| McCulloch  | 1          | —          |
| Money      | 2          | —          |
| North      | 13         | —          |
| Parker     | 6(1)       | 1          |
| Plummer    | —(1)       | —          |
| Saxby      | 7          | 1          |
| Shearer    | 3          | —          |
| Sindall    | 2          | —          |
| Small      | 11         | 3          |
| Stephens   | 2          | 1          |
| Thomas     | 12         | —          |
| Turner     | 4          | —          |
| Watts      | 10         | 4          |

Up to and incl 10th Jan

## SCORECHECK

|                           |                      |
|---------------------------|----------------------|
| Arsenal v Stoke           | Bolton v Burnley     |
| Birmingham v Man Utd      | Carlisle v Derby     |
| Everton v Watford         | Charlton v Leicester |
| Ipswich v Brighton        | Chelsea v Cambridge  |
| Man City v Norwich        | Leeds v Grimsby Town |
| Nott'm Forest v West Ham  | Rotherham v Fulham   |
| Southampton v Coventry    | Shrewsbury v Oldham  |
| Sunderland v Aston Villa  |                      |
| WBA v Liverpool           |                      |
| Barnsley v Crystal Palace |                      |
| Blackburn v Wolves        |                      |



**TOKEN  
15**

**Saturday 15th January 1983**  
**TOTTENHAM HOTSPUR**





# Luton's star.



Two teams from Luton are currently making a name for themselves.

'The Hatters' are in the first division. And Vauxhall-Opel are enjoying fantastic sales success.

Achievements in different fields, but

for the same reasons.

A consistently high all-round performance and magnificent team effort.

Facts confirmed by checking out today's line-up, and by a visit to your local Vauxhall-Opel dealer.

With stars like the Cavalier, the coming season promises to be even better for us.

We're sure that's also true of Luton Town.



## VAUXHALL-OPEL