

THE HATTER

Official Matchday Magazine Price 50p

LUTON TOWN v IPSWICH TOWN



TODAY'S MATCH IS SPONSORED BY:
**BEDFORD
TRUCKS**

LUTON TOWN FC



70-72 Kenilworth Road

Luton

Tel: 411622

Season 1981-82

Chairman:

Denis Mortimer

Directors:

R. L. Banks, D. J. Evans
E. S. Pearson, H. Richardson
R. J. Smith, J. R. Smith
D. J. Pleat (Team Manager)

President:

T. Hodgson

Vice-Presidents:

J. A. C. Bain (Deputy President)
Lord Hill, Sir Reginald Pearson OBE,
A. J. Berry, J. B. Brent,
B. Cole, B. England,
N. S. Fookes, G. B. Holland,
C. Holloway, I. E. Holmes,
C. J. Hudson, R. Larkinson,
L. Leppington,
Eric Morecambe OBE, R. Safranek,
E. Waller, R. Unwin

Administration:

General Secretary:
Graham MacKrell

Club Secretary:
John Wilkinson

Project and Advertising Manager:
Mike Beevor

Commercial Manager:
Mike Hardwicke

Catering Manager:
Clive Hustwitt

Youth Development Officer:
Colin Ball

Travel Organiser:
Mrs C. Ball

Auditors:
Arthur, Young, McClelland,
Moore & Co.

Photographer:
Gareth Owen

Playing:

Coaches:
David Coates, John Moore and
Trevor Hartley

Physiotherapist:
John Sheridan

Doctor:
W. A. C. Berry MBBS

TEAM CHECK

LUTON TOWN

1	JAKE FINDLAY
2	KIRK STEPHENS
3	MARK AIZLEWOOD
4	BRIAN HORTON
5	CLIVE GOODYEAR
6	MAL DONAGHY
7	RICKY HILL
8	BRIAN STEIN
9	STEVE WHITE
10	LIL FUCCILLO
11	DAVID MOSS
12	

IPSWICH TOWN

1	PAUL COOPER
2	GEORGE BURLEY
3	STEVE McCALL
4	MICK MILLS
5	RUSSELL OSMAN
6	TERRY BUTCHER
7	JOHN WARK
8	ARNOLD MUHREN
9	PAUL MARINER
10	ALAN BRAZIL
11	ERIC GATES
12	



IN CHARGE TODAY

Referee: CLIVE THOMAS, Porthcawl
Linesmen: A. S. HESELGRAVE (Red Flag)
E. J. SCALES (Yellow Flag)

Clive Thomas started refereeing as a teenager after once being on Norwich City's books. Graduated through local and Welsh League to the Football League full list. Has refereed several international and important European matches including two in the 1974 World Cup Finals. A married man, with two daughters, he is a group executive, and his other interests include tennis and basketball.

HATTERS NEWS



WELCOME VISITORS

We are always pleased to show visitors around the ground. Many youngsters visit Kenilworth Road under our Junior Hatters Club scheme and the tours are always interesting and informative.

Visitors are shown the dressing rooms and all the facilities behind the scenes. And sometimes, if you're lucky, you may even meet our players.

This group did when they bumped into Clive Goodyear and Mark Aizlewood.

IT'S SNOW JOKE

Our attempts to play Cambridge United on 26th December were frustrated by severe frost after an appeal for volunteers to clear the pitch and terraces was answered by a mini army of local schoolboys.

They turned up in their dozens armed with spades and brushes and attacked lumps of ice and piles of snow. They had been working for only an hour when local referee Bob Rivers decided the pitch surface was too dangerous to play on.

All the boys who responded to our appeal were given a ticket to watch the Cambridge game on 2nd March. Although their efforts were in vain, we appreciated their help. Well done lads.

CONGRATULATIONS, STEVE

Striker Steve White has enjoyed a double celebration. In addition to scoring one of our three goals at Norwich, he also announced his engagement to his girlfriend, Mandy. The smiling couple are pictured at our annual party at Cesars Palace.



OMEGA AWARD

'Look what we've won,' could be what manager David Pleat is saying after being presented with the Omega Team of the Month award for November before our last home game against Swindon.

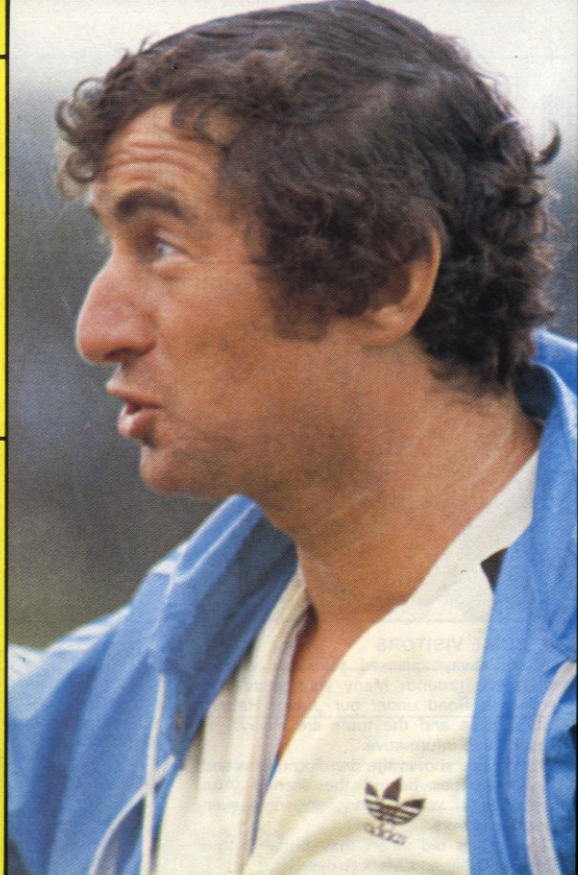
We won the award after Frank McLintock,

one of the panel who nominated Luton, said: 'They play excellent football and would be a credit to the First Division.'

Each player won a replica of the trophy and we now go forward as a nomination for the Team of the Year which will be announced during the summer.



DAVID'S DIARY



Everyone has been eagerly awaiting today's game, hoping that the recent disastrous weather will not prevent what looks like an outstanding game. We welcome Ipswich and wish them every success in their efforts for the League Championship and the League Cup.

The absence of competitive football at Luton for such a long period (November 28th was our last League home game) will, I hope, stimulate the Bedfordshire public to come and support the club in the next vital weeks. We can get through the present economic worries that face all the clubs with good support at the gates.

Hopefully, Mick Saxby is now on the road to recovery from injury after a worrying time when he has been training extra hard under the watchful eye of John Sheridan. Also, Brian Horton damaged a knee ligament in the last round of the Cup, but he could be fit for today.

During the recent League inactivity we managed to pull in games against Brighton, Forest and Lincoln as vital match practice. At Brighton we more than held our own in a 1-0 defeat. At Nottingham after playing really well for 55 minutes we collapsed against a side stung by a Cup defeat against Wrexham. Alan Judge and Rob Johnson played well in this game. Against Lincoln the fog was the winner but some of our moves in the first half were promising but no goals materialised. Jake Findlay made a brilliant penalty save here.

There has been speculation in the Press during this cold spell about possible international selections with the World Cup in mind. The four international managers know exactly what they want. If we took a selection of the media there would be far too many players for each position.

I have constantly told our players: play well together as a team, be successful and the projection the team receives will result in recognition for individuals. They can look at Ipswich's achievements with hope and confidence. They have been built up from a humble start to a proud club with internationals in every position.

Nothing is impossible in football if we work together as a team. We can emulate the tremendous achievement of Ipswich, a small town club, efficiently directed, well managed and coached with skilful players.

Keep up the support and if you enjoy the game we welcome you back.

LUTON TOWN



Back row (left to right): Steve White, Mal Donaghy, Clive Goodyear, Jake Findlay, Mike Saxby, Alan Judge, Mark Aizlewood, Godfrey Ingram, Wayne Turner.

Front row: David Coates (coach), Kirk Stephens, Lil Fuccillo, Ricky Hill, Brian Horton, David Pleat (manager), Raddy Antic, David Moss, Brian Stein, John Sheridan (physio).

IVOR HOLMES



LUTON 56622

R. W. UNWIN & CO LTD

Pharmaceutical and Fine Chemicals
and
Chemical Intermediates

Prospect Place
Welwyn, Herts
AL6 9EW
Tel: Welwyn 6441/2/3/4

GRAHAM FORD LTD

TRADING AS
LOCKHART BENNETT

*Comprehensive Builders Merchants
For Home and Garden*

Depots:

Luton — Kingsway 31199
Dunstable — Beale Street 603111
Leighton Buzzard — Leighton Road 373486

Willis-Dawson Ltd

Builders and Developers
Leighton Buzzard

Tel: Leighton Buzzard 372557

See how far your money goes when you travel with

TRAVEL CENTRE

Come in and get the best deal going
47 GEORGE STREET, LUTON
Tel: 421751

15a HIGH STREET NORTH, DUNSTABLE
Tel: 609677

J. F. MEADE LTD

Civil Engineering
Building Contractors
Plant Hire

14 Tennyson Road
Luton, Beds
Tel: 0582 287401/414759



Your Discount Choice

LUTON SPORTS PRESS LTD

THE LOTTERY TICKET SPECIALIST
Tel: Luton 28757

Discounts on all Tyres and Exhausts
at



Manor Road, Luton. Tel: 410410
122-124 Leagrave Road, Luton. Tel: 37835
162-170 High Street South, Dunstable. Tel: 69913

Cleandustrial Services Ltd

The Professional Approach to
Your Cleaning Problems
84 Aldermans Hill N13

TRAVEL TIME

It is nice to be able to communicate with travelling supporters again after so many postponed games. We did manage to travel to Norwich at the end of December and bookings for future games are coming in very well as I write these notes.

A piece of news for would be away travellers is that from 16th January, the Aylesbury coach picked up at Bletchley Bus Station. My thanks to Mr Mongiardi for arranging this. He and Mr Snookes are taking bookings for their areas, and will have information regarding times, etc., or you can, of course, contact me direct at the Football Club, 411622, mornings 9.30 a.m. to 1.30 p.m.

I hope this will mean the Aylesbury coach will come in full in a week or two, which is almost the case now

with the Hitchin away coach. I anticipate this coach will travel directly to and from Hitchin to away games with a full load.

The Barnsley game has been rearranged for Tuesday 16th March. Those of you who have already booked for this will still be able to travel though, as it is a Tuesday night, this may prove difficult for some. If this is the case, and you have to cancel, I would appreciate knowing as soon as possible, so I may offer your place to another supporter. Times, etc., will be given shortly, and also details of the game at Sheffield Wednesday on 6th February.

From a new beginning at the start of the season, our Travel Club is building up slowly. Our record so far is six coaches to Shrewsbury, and we now

have five services bringing supporters to home games. These need a little more advertising to make sure they are fully used, so don't forget to let your friends know that we have coaches coming into all home games. By the end of this season we look forward to a thriving **membership** which is important to build on ready to continue and increase our support in future seasons.

I could do with a courier on the Bedford run, and in the Rotherham programme, I mentioned Howard Stevens needed some help on the Biggleswade run. Volunteers should contact me at the club. Also don't forget your ideas are welcome. Several already received have been put into action to help our services to you.

Catherine Ball, Travel Organiser

MEMBERS OF THE

KENILWORTH SUITE

AMERICAN-CAN (UK) LTD
WALTON ROAD, CALDECOTTE
BOW BRICKHILL
MILTON KEYNES MK7 8AE

BARRATT DEVELOPMENTS
(LUTON) LTD
PO BOX 5, BARRATT HOUSE
LUTON L42 7XJ
TEL: LUTON 422771

A. G. BERRY ESQ.
BRENGREEN HOLDINGS LTD
61 CHEAPSIDE, LONDON EC2V 6AX
TEL: 01-248 6026

B. COLE ESQ.
CLEANDUSTRIAL SERVICES LTD
PALMERS GREEN, LONDON N13
TEL: 01-882 4626

FILMERGRAPHIC ASSOCIATES
PHOTOTYPESETTING AND PRINTING
BAINSON HOUSE, ALTON ROAD
LUTON

TEL: LUTON 36407
FINE STAMPS LTD
BILTON WAY, LUTON
TEL: LUTON 36761

N. S. FOOKES ESQ.
N. S. FOOKES, ENGINEERING
SERVICES LTD
45 LATIMER ROAD, LUTON
TEL: LUTON 26139

MR E. FOUNTAIN
VAUXHALL MOTORS
LUTON

S. GOLBY, FREDK RAY LTD
STANBRIDGE ROAD
LEIGHTON BUZZARD
TEL: 372241

BRIAN E. HANDSCOMBE
(LIFE AND PENSIONS BROKER)
48 ALMA STREET, LUTON LU1 2PL
TEL: LUTON 425921/4
G. B. HOLLAND ESQ.
G. B. HOLLAND & CO. LTD
MOTHERWELL WAY, LONDON ROAD
WEST THURROCK, ESSEX

MR I. E. HOLMES
IVOR HOMES LTD
82-88 MARSH ROAD, LUTON
TEL: LUTON 56622

C. J. HUDSON ESQ.
E. W. HOLDINGS LTD
6 UNION ST., LUTON
TEL: LUTON 30511

RICHARD C. LARKINSON
(BALDOCK) LTD
TWENTY PENCE ROAD
COTTENHAM, CAMBS.
P. LAYCOCK, LUTON SPORTS PRESS
HAZELBURY CRESCENT, LUTON
TEL: LUTON 28757

MARK JAMES (SALVAGE) LTD
16 WEST STREET, DUNSTABLE
TEL: DUNSTABLE 605944

MARSHALLS OF LUTON
(BUILDERS) LTD
SARUM ROAD, LUTON
TEL: LUTON 597666/9

DR & MRS G. L. PLESTER
9 BRIARS CLOSE, NUNEATON
WARWICKSHIRE

A. HUNTER ESQ.
RAVENMERE LTD. ALLRIC HOUSE
21 FARLEY HILL, LUTON
TEL: LUTON 32640

RICHMOND ELECTRONICS
(MARKYATE) LTD
HICKS ROAD, MARKYATE, HERTS.
TEL: LUTON 840761

ROBINSON METAL (LUTON) LTD
CALEB CLOSE
464 DUNSTABLE ROAD, LUTON
TEL: LUTON 53866

R. S. SAFRANEK ESQ.
NEAHURST LTD, LONDON RD.
LOWER STONDON, HITCHIN
TEL: HITCHIN 94-813545

TRICENTROL CARS (LUTON) LTD
326-340 DUNSTABLE ROAD, LUTON
TEL: LUTON 31133

T. & H. TYRE SERVICES LTD
MANOR ROAD, LUTON
TEL: LUTON 27665

R. W. UNWIN ESQ.
R. W. UNWIN & CO. LTD
PROSPECT PLACE, WELWYN HERTS.
TEL: WELWYN 6441

WALLSPAN BEDROOMS
INDUSTRIAL ESTATE
MAULDEN ROAD, FLITWICK, BEDS.
TEL: FLITWICK 3621

SPOTLIGHT ON RADDY ANTIC



SPOTLIGHT

When manager David Pleat signed Raddy Antic from Spanish First Division club Real Zaragossa in June 1980, there was an air of expectancy from the Luton fans.

The Yugoslavian international arrived at Kenilworth Road as a sweeper, but his versatility was soon to become a favourite with the Towns' supporters.

Antic hasn't let them down and demonstrated his superb ability to beat keepers with his uncanny shooting power at Norwich just after Christmas with an effort which would walk off with the Goal of the Season award had the match been televised on a Saturday.

Norwich keeper Chris Woods didn't have time to move until the ball hit the back of the net — but that wasn't an isolated goal from Antic. How many Luton fans can remember the one he put past big Joe Corrigan in the League Cup tie at Kenilworth Road last season? It was from a free-kick and Raddy curled the ball past the keeper after cleverly beating the defensive wall.

It is goals like that which has made Antic a big favourite at Luton, and he has also the ability to take on opposing



players and beat them with his intricate footwork.

Yet there was a time last season when it appeared that Antic could possibly leave Luton. The manager put him on the transfer list saying: 'He is too good to play in our reserves.'

He made only 18 Second Division appearances last term in addition to 12 as substitute, and it was no secret that he wasn't too pleased to lose his place in the senior side on occasions.

His appearance at Norwich was only his eighth of the season, although he has been nominated as substitute on a number of other occasions.

He came into the team for the injured Ricky Hill, and Antic later drew the following post-match comment from our manager.

'As foreign players go, he is one of the best. He settled in at Luton remarkably quickly and has tremendous skill.'

Antic is probably more at home in midfield than as a sweeper and sees his spell in the Football League as another episode to learn some of the coaching aspects of the game.

Although he hasn't been a regular member of the first team, there is little doubt he is a vital asset to Mr Pleat and the club.

Complete fitted bedrooms // from around £450

Wallspan Bedrooms

**FREE DESIGN
FREE FITTING**

see the full range at

LUTON
Unit 174,
Bute Street,
Arndale Centre,
Luton, Beds.
Tel: Luton 23015

BEDFORD
59 Midland Road,
Bedford.
Tel: Bedford
211327

STEVENAGE
18 Market Place,
Stevenage, Herts.
Tel: Stevenage
724853

WATFORD
17/19 Queens Road,
Watford, Herts.
Tel: Watford
38388

IT'S LEATOWN AGAINST THE NATIONAL SIDE OF GUATADOR, WITH "BOBBIN" PLAYING FOR HIS CENTRAL AMERICAN HOMETLAND. IT'S MEANT TO BE A FRIENDLY, BUT THE REF HAS OTHER IDEAS...

IF THAT PENALTY SHOT GOES IN, IT'LL LEAVE LEATOWN 2-0 DOWN!



SEASON'S GREETINGS TO ALL OF BOBBIN'S FANS. HEAD FOR HEIGHTS!

EPISODE TWELVE

by Ray Aspden



THAT WAS DELIBERATE! YOU AIMED TO MISS GOBBINO, 'CAUSE LEATOWN ARE YOUR AMIS!



YOU TRAITOR! YOU'VE BETRAYED GLORIOUS GUATADOR TO THE ENGLISH ENEMY!

GO EASY, IT'S ONLY A GAME! AND, TAKE MY WORD I ALWAYS PLAY STRAIGHT!

THE REF BLEW FOR HALF-TIME AND, FOR ONCE, LEATOWN HAD NO COMPLAINTS.

I WOULDN'T FIX A MATCH, BUT I DIDN'T MIND CORRECTING A TRAVESTY OF JUSTICE



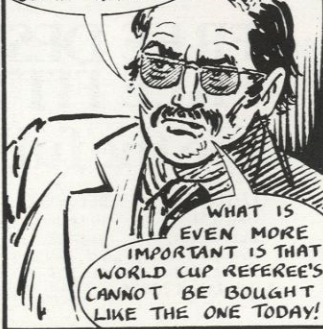
THE ARGUMENTS ABOUT THE MISSED PENALTY, CONTINUED IN THE GUATADOR DRESSING ROOM DURING HALF-TIME...



YOU'LL NEVER TAKE A PENALTY AGAIN, WHILE I AM CAPTAIN.

LET IT REST!

STOP THE QUARRELING! IT IS NOT IMPORTANT IF THE MISS WAS DELIBERATE. WHAT IS IMPORTANT IS THAT THE PENALTY SHOULDN'T HAVE BEEN GIVEN!



WHAT IS EVEN MORE IMPORTANT IS THAT WORLD CUP REFEREE'S CANNOT BE BOUGHT LIKE THE ONE TODAY!

THE START OF THE SECOND-HALF



WHAT'S HAPPENED? A LINESMAN HAS TAKEN OVER AS REFEREE!

PERHAPS THEY HAD A REVOLUTION LIKE OUR GOVERNMENT.

FIND OUT WHAT'S HAPPENED TO THE REAL REF, NEXT EPISODE.

JUNIOR HATTERS



The current leaders of Division One (at the time of writing) are our FA Cup opponents today, and this must be a thrilling prospect for all young fans.

For me, it revives memories of Luton's finest Cup run in the 1958-59 season, when we met Ipswich Town at Portman Road when they were in the Third Division. This brings me to the competition which I set for our members in the Evening Post Junior Hatters column recently.

The result appeared in last week's column, as did the name of the lucky winner, Junior Hatter Lee Hilton of Pottery Close, Marsh Farm, Luton, and today I shall be pleased to award him his prize, a Luton Town shirt, on the pitch before the start of the game.

Well done, Lee, and thank you to all our members who sent in correct entries. Lee happened to be the lucky one whose name was drawn out of the hat.

Our proposed 'away-day' trip to watch the Town in action at the Baseball Ground, Derby, when we play the Rams is fully booked and final details will be given in this column soon.

Happily, we are able to be guests of the Junior Rams, as a responsible, privileged group of young supporters, because the treatment which the Derby fans and the Baseball Ground received at the hands of a few irresponsible so-called football supporters recently, has not only soured their views of visiting supporters, but caused them to impose financial sanctions against them by admission price increases.

This serves to show how vital clubs like our Junior Hatters are to professional football by helping to maintain it as a great spectator sport, and by setting good standards of behaviour at matches.

Good news for members — our next full Junior Hatters meeting will be Tuesday 9th February in the Hatters Club, starting at 6.30 p.m. Main attraction of the evening will be the great Pele in film, so book the date to be there.

In addition to our Mascots and Escorts for today's game, I extend a warm welcome to seven-year-old Darren Brimmer of Doggett Street, Leighton Buzzard, who is Mascot for Ipswich Town.

Darren is the youngest member of the East Midlands Branch of the Blues Supporters Club, and has been a keen supporter since he was four. He is a pupil at Mary Bassett School in Leighton Buzzard.

MASCOT AND ESCORTS

Mascot: Paul Stillwell aged 12, who lives at Five Oaks, Caddington. He attends Five Oaks School, and his interests are model making, snooker, and playing football for Caddington 11-13 FC.

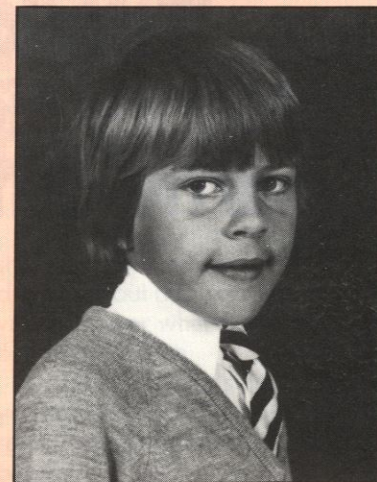
Escorts: Mark Parker of Burnt Close, Marsh Farm, Luton. Aged 13, Mark attends Lea Manor High School, is interested in collecting programmes and matchboxes. He also plays football for Luton North End 11-13 team.

Darren Carey, aged 11, from Katherine Drive, Dunstable. Darren attends Mill Vale School, Dunstable, is interested in football, swimming and reading. He plays for Mill Vale and Campbell Cub Pack teams.

David Clarke, aged 10, from Montrose Avenue, Luton. David attends William Austin School, and plays football for his school team. His other interests are cubs, boxing and karate.

Dean Harris, of Kingsley Road, Luton. Aged 10, Dean attends Icknield

THE MASCOT...



PAUL STILLWELL

Junior School. His interests are football, boxing swimming and reading, and he plays football for his school 'B' team and Foxdale community team.

COLIN BALL

Youth Development Officer



DARREN BRIMMER

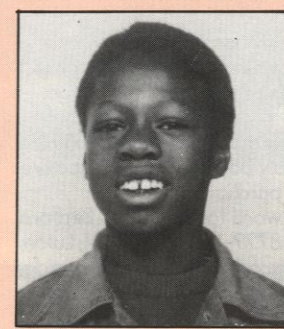
... AND THE ESCORTS



MARK PARKER



DARREN CAREY



DAVID CLARKE



DEAN HARRIS

TODAY'S MATCH SPONSOR

'Truck' compared them side by side. Guess which one came out on top?



"The Ford gave more cargo space at the expense of nearly half-a-ton more weight."

"Of the two (cabs) the Ford came out marginally ahead on points by virtue of its better dash arrangement, more space and slightly superior access."

"The major point in the Cargo's favour is its appearance."

TRUCK' MAGAZINE

The August '81 Truck Magazine took a 749 tonne Bedford TL by the neck and wrung it out over a tough test course in company with its deadly rival, a Ford Cargo plated at the same GVW.

The outcome, Bedford TL beat the Cargo in the most important areas, notably payload earnings factors, fuel consumption and initial purchase price.

But don't take our word for it, write to Bedford Commercial Vehicles, Route 8729-W2, FREEPOST, Luton, LU2 2BR and we'll send you a copy of the complete article.

Or better still, talk to your Bedford Truck Dealer about the new TL and check out his special 'Cost-Cutter' deals. Either way you'll find out how a Bedford TL helps you stay on top.

"The Bedford's fuel economy right across the performance spectrum was nothing short of outstanding."

"Top gear performance in the Bedford was superior however, thanks partly to the lower gearing but largely to the remarkable low-speed torque of the 330D."

"Despite its larger wheels the Bedford's step/floor heights are lower."

"The Bedford's steering was lighter and less wooden, regardless of weight distribution."

"It is very pleasant to drive... absurdly easy to use in town traffic."

"The Bedford's cab is the easier of the two to tilt... every single item on the Bedford, from the fuel filters to the fuses, is easy to find and easy to work on."

"We discovered that the TL was... a highly efficient working tool, both from the driver's and the boss's point of view."

TRUCK' MAGAZINE

Payload Earnings Factor	Ford Cargo	Bedford TL
Tough-going combination	1384	1749
City running section	1010	1103
Motorway	1822	1805
Main road, not over 40mph	2357	2674
Overall whole route	1647	1861

*Payload Earnings Factor = Payload x MPG x MPH.

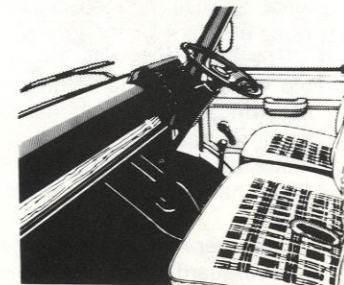
Reproduced from 'Truck' Magazine August 81.

  **BEDFORD TL**

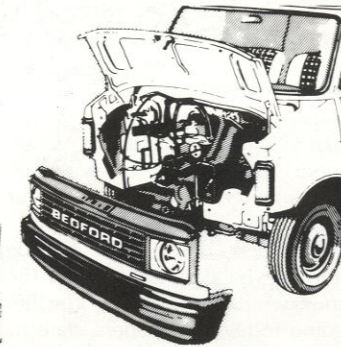
TEST DRIVE THE NEW BEDFORD CF BEFORE YOU PUT YOUR GOODS IN TRANSIT.

Can other vans offer you as much as the new CF?

For a start, there are 1.8 and 2.3 litre petrol engines or a 2.3 litre GM diesel unit, with either manual or automatic transmission, to choose from.



And what size van do you want? The CF is available with vehicle weights of 2.3, 2.5, 2.8 and 3.5 tonnes; and various combinations of sliding or hinged cab and side-loading doors.



It's very durable, too, with an eleven stage anti-corrosion process, rust-proofed front-end with special coated steels, sleeved wiring and a pre-engaged starter.

But we haven't ignored the interior. Inside the cab are comfortable plaid-cloth seats, extra soundproofing and well laid-out controls.

This van can handle both short local trips and motorway drives without a grumble, as you'll discover when you take one for a trial run.

The CF will also save you downtime and money. The removable front-end can be dropped within 15 minutes to speed up maintenance and reduce service bills.

Come down to your Bedford dealer now to test drive the new CF. And ask him about his low, low prices. That'll be the best part of all.

ASK YOUR BEDFORD DEALER ABOUT HIS LOW, LOW PRICES ON CF.



  **BEDFORD CF**
The right vans. The right business deals.

FLASHBACK

A look at Luton Town a decade ago.
By **BRIAN SWAIN**
Sports Editor, Luton News

The glamour of the FA Cup, and the stirring challenge of meeting a top footballing side, was as much on our minds in Luton ten years ago as it is today.

Luton Town, building a side to continue the revival which had seen them come up from the Fourth Division into a promotion-seeking side in the Second Division in three years, was drawn to play at West Ham in the third round.

The Hammers, managed by Ron Greenwood, were famous for the quality of their football, even if it

didn't win much in the way of trophies, and little Luton had the cheek to believe they could be a match for them.

The club even went to the unusual length of declaring its confidence by making advance announcements about the replay arrangements.

The Press build-up to the big game, played at Upton Park on 15th January 1972, makes startling reading today. The papers were full of star names, and it is surprising how many of the West Ham team are still around. Their line-up was: Ferguson, McDowell, Lampard, Bonds, Taylor, Moore, Best, Redknapp, Hurst, Brooking and Robson.

In the *Luton News* preview of the game, all the obvious points about Bobby Moore's coolness and Geoff Hurst's sharpness were covered. It talked about the strength of Clyde Best, who had replaced the recently-retired Jimmy Greaves, and the slick finishing of Pop Robson.

But the biggest surprise of all, when you re-read the papers ten years on, was a mention of a young midfielder player who had just got into the West Ham team, and who was said to look a very good prospect.

The previous summer he had been available for transfer. Luton Town had been interested, but had shied off when told the asking price was £80,000. West Ham must be delighted that no-one matched their valuation — the youngster was Trevor Brooking!

The Town took a big following to Upton Park, and after a run of eight League games without defeat perhaps we had good reason to believe we could see a shock result. It turned out to be a pulsating Cup-tie, appreciated by every one of the 32,199 spectators.

I remember it best as the day Tony Read saved a penalty from Geoff Hurst to keep the game alive right to the last kick.

The Hammers had the better of the first half. The Town defence struggled to pin down winger Harry Redknapp, and Best and Hurst were able to find space to keep Read busy.

The game was only 91 seconds old when West Ham's first attack brought a goal, Hurst heading in from a cross by Brooking. Best made it 2-0 in the 25th minute, after Read had parried a header from Hurst.

Manager Alec Stock re-organised his rearguard at half-time, and suddenly the Town looked the better side, with Chris Nicholl and John Ryan doing man-for-man marking jobs on Hurst and Best.

Don Givens headed a 54th-minute goal from a centre by Gordon Hindson and the Hammers looked rocky until they won a penalty 17 minutes later. The Town protested in vain that Brooking had fallen over his own feet and not John Moore's when he took a tumble, but referee Ken Burns gave the penalty. Justice was done when Read dived magnificently to stop the spot-kick by Hurst, and Robson shot over the bar from the rebound.

After that the game could have gone either way, with Hindson and David Court both hitting the woodwork for the Town, and Redknapp shooting against a post at the other end.

If today's Cup-tie is half as exciting, we're in for a treat.

Today's visitors won't find too much to enjoy in remembering their Cup exploits of ten years ago — they beat Peterborough in the third round with goals by Hill and Viljoen, but lost 0-1 to Birmingham in the fourth.

TREVOR BROOKING



LUTON

Wallspan Bedrooms
Showrooms throughout London and Home Counties
SEE US IN
LUTON ARNDAL CENTRE ☎ 23015

SCORE WITH MATTERS BINGO.

Wallspan Bedrooms
FITTED BEDROOM FURNITURE
SEE US IN
Yellow Pages



FAN WINS SILVAIR HOLIDAY

Congratulations are due to Mr M. Witchard, pictured receiving his £400 holiday voucher from Mr Hugh Boyle, director of Silvaair Holidays who kindly donated the holiday.

Over 25 contestants took part in our special bumper Christmas Take Your Pick game when we played at the Swindon match and everyone, we are pleased to say, walked away a winner as all contestants received a souvenir to commemorate the day.

WALLSPAN & BERNARDS WORLD OF SPORT TARGET GOLF

We are delighted to say that entries are still rolling in for pre-match golf. However, we still have room for more! It's good fun, plenty of excitement and we are playing for the star prize of £400 worth of golfing equipment kindly donated by Slazenger.

If you fancy your chances at golf on our lush greens please apply now to Mary Bunyan, Luton Town Football Club, 70-72 Kenilworth Road, Luton. Telephone: Luton 411622.

CROSSWORD

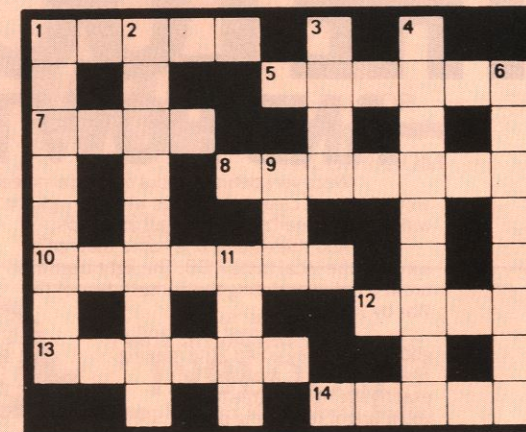
CLUES — Across

1 & 5. Leeds United striker honoured at England Youth level (5, 6); 7. Nickname of the club holding the League Cup (4); 8. Cardiff City's top scorer last season (7); 10. Country which produced the first of the 100-caps men (7); 12. One of the Hollins brothers (4); 13. Country in which all four British sides turned up to participate in a World Cup finals series (6); 14. His moves about London have cost about three million pounds (5).

CLUES — Down

1. Huddersfield Town's nickname (8); 2. He lifted the FA Cup in 1976 (9); 3. The season's top striker gains a golden one (4); 4. In possession (2, 3, 4); 6. Colourful-sounding custodian who made his debut with Walsall in 1977 (3, 5); 9. The Welsh Walsh (3); 11. Bruce's first name (4).

• The solutions to today's crossword appear on page 20.



AROUND THE TOWN

Brian Swain reviews previous games between Luton and Ipswich.

History will repeat itself in today's Cup-tie. The only trouble is that you can choose whatever bit of history suits you if you look back at previous Luton v Ipswich Cup battles.

Luton supporters would prefer to recall the glory days of 1959, when we went to Portman Road and gave the Ipswich side a real thrashing in a fifth round tie. Ipswich fans will be happier remembering the Cup meeting three years later, when it was the turn of Ipswich to dish out a hiding.

The 1959 match was a St Valentine's Day massacre. Luton were enjoying their best-ever Cup season, and Ipswich were the opposition on 14th February for a game on a bitterly cold day.

Ipswich were a middling Second Division club — but not for much longer — and First Division Luton Town showed no signs of the dramatic decline which was about to hit them. They romped home with a 5-2 victory, and went on all the way to Wembley before losing to Nottingham Forest.

The game was as good as over by half-time, when the Town's lead was 4-1. Bob Morton scored twice and the

other marksmen were Dave Pacey, Billy Bingham and Tony Gregory. Bill Rees scored both Ipswich goals.

Fortunes had swung in opposite directions by the time Ipswich and Luton were paired again in the Cup, in 1962.

Luton had been relegated to the Second Division, and were on their way through to the Third and Fourth, while Ipswich, managed by Alf Ramsey, had won the Second Division title, ahead of Sheffield United and Liverpool, and were about to complete a remarkable double by winning the First Division Championship as well at the first attempt.

But although they were favourites to win, Ipswich were made to fight all the way before Luton Town finally had to accept defeat. It took five hours of football to settle the third round tie, at a second replay at Highbury.

In the first game at Portman Road even Ipswich chairman John Cobbold went on record with an admission that the Hatters were unlucky not to win. Luton looked the more lively side, and had strong claims for a penalty rejected.

Ted Phillips put Ipswich ahead in the first minute, and Robin Chandler equalised midway through the second-

half, and 18,450 customers happily settled for the prospect of a replay.

The attendance at Kenilworth Road was 23,818, the biggest of the season, and in a gruelling encounter 1-1 was the right result, with both teams looking all-in as extra-time was played. John Elsworthy put Ipswich ahead in the 18th minute and Dave Pacey equalised in the 77th.

The tie went to its third match at Highbury, where a crowd of 29,458 saw Ipswich get through 5-1. Luton manager Sam Bartram confessed later that a team meeting had made the biggest mistake of the match, just before kick-off.

Ipswich goalkeeper Roy Bailey — father of Manchester United's Gary — had gone down with tonsillitis and untried reserve Wilf Hall was brought in. Alf Ramsey figured the Town would pepper him with shots from the first minute, and was not too happy with the prospect.

One of the worst winter gales of the year blew down the Highbury pitch that night, and Town skipper Bob Morton discussed with his teammates which way they should kick in the first-half if they had the choice. They decided to face the wind first, and Morton duly

won the toss and made that choice.

It meant that young Hall was given an easy introduction on a night when his nerve might have failed, and the game was decided by half-time, when Ipswich led 3-0 with a goal by Doug Moran and two by Phillips. Alec Ashworth pulled one back but two late goals from Roy Stephenson completed Ipswich's success.

But they soon had time to concentrate on collecting League points — Norwich beat them in the fourth round, 2-1 in a replay after a 1-1 draw.

The most recent visit by Ipswich to Kenilworth Road was in September 1974, for a match which most Luton supporters would rather forget.

The Town had just won back a place in the First Division and by the time Ipswich came here had played five League games and still not registered a win. Liverpool won here on the opening day and we drew at Middlesbrough and Leeds, and at home to West Ham and QPR.

Welcomes to visiting teams and officials are routine in soccer match programmes, but the one in the game for 14th September 1974 was a little brighter than the usual platitudes. Manager Harry Haslam concluded his

column: 'A special welcome to Bobby Robson today from myself and Roy McCrohan, for this is one day we have looked forward to. It is a nice feeling to get together in Division One — the last time we were together was at the Labour Exchange.'

That was a reference to a sad day at Fulham when Haslam, Robson and McCrohan all got the sack from Craven Cottage.

We were a bit lavish with the welcome on the pitch as well. A crowd of 17,577 saw Ipswich given too much freedom in attack. They won 4-1 with two goals by Brian Talbot and one each from Kevin Beattie and Bryan Hamilton. John Aston was the Town's scorer.

The sides that day:
LUTON: Barber, Shanks, Thomson, Anderson, Faulkner, John Ryan, Hindson, Husband, Butlin, West, Alston. Sub: Jim Ryan (not used).
IPSWICH: Sivell, Burley, Mills, Talbot, Hunter, Beattie, Hamilton, Viljoen, Woods, Whymark, Lambert. Sub: Gates for Lambert (55 minutes).

That defeat was the start of a depressing run for Luton Town, and by the time we travelled to Portman Road for the return on Boxing Day 1974, the Hatters were already looking doomed to

relegation. With half the season gone only 11 points had been collected. Ipswich were top of the table, ahead of Everton and Manchester City on goal average, and we were bottom.

The result was a foregone conclusion — except that Ron Futcher made his League debut in place of Peter Spiring and marked the occasion by scoring the only goal of the game in injury time. It was the shock of the day, perhaps of the entire season, and started a Luton revival which went very close to escaping relegation.

Ipswich were destined to finish third in the table behind Derby and Liverpool. Carlisle were bottom with 29 points. Chelsea finished level with Luton on 33 points, and Spurs escaped the drop by one point by winning their last match.

The teams on 26th December at Portman Road, when the attendance was 23,413:

LUTON: Horn, John Ryan, Buckley, Anderson, Faulkner, Paul Futcher, Jim Ryan, Husband, Ron Futcher, West, Aston. Sub: Fuccillo (not used).
IPSWICH: Sivell, Burley, Mills, Talbot, Peddely, Beattie, Osborne, Hamilton, Johnson, Whymark, Lambert. Sub: Collard (not used).

THE LOCAL TASTE AND HOW TO SATISFY IT

We're very definite about our taste in beer around here. A clear light pint is what we look for; with a good, clean smack of malt and hops.

And there's only one name that really satisfies the local taste — BB. The light beer first brewed in Luton during the darkest days of the War by J. W. Green.

Only the finest hops and good, ripe barley go into the making. Then the brew is matured to exactly the right degree to give you a bright refreshing pint with a sound, full flavour.



WHITBREAD

American servicemen in local wartime bases declared that BB, chilled, was the nearest taste to Stateside draught.

It went down well when Syd Owen ruled the Hatters.

And it's been going down well ever since. Because BB is brewed with a proper respect for quality. To keep up the traditions we value round here.



Your Local Tour Operator
Book now for your Summer Holiday
Brochures available from:
Silvair Holidays Ltd
Silvair House
13-15 King Street, Luton
Tel: 412131

For ALL your Window and Door requirements

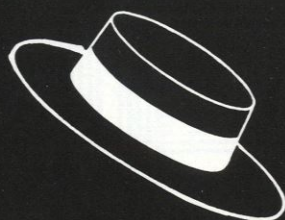
WHA ALLSOP
ALUMINIUM

153 Newtown Street, Luton
Tel: Luton 20011/23472. Eves 424650

For all your
Floral arrangements contact:
INBLOOM
(Suppliers to Kenilworth Suite)
45 Latimer Road, Luton



HATS OFF TO LUTON TOWN



Princess Packaging Ltd.
SUPPLIERS OF PRINTED POLYTHENE CARRIER BAGS
55 Princess St., Luton, Beds. LU1 5AX
Tel. Luton 27234

**Wallspan
Bedrooms**

**E. W. HUDSON
HOLDINGS LTD**

**CONNOLLY
HOMES**

**Willis-Dawson
Limited**

HENLYS

**Richmond
Precision Engineering
Limited
Luton**

**THE
HERALD
NEWSPAPER**

**SEFACT
MESSAGE CENTRES
LIMITED**

**TEK
POWER
TOOLS**

WHA ALLSOP
ALUMINIUM

Tricentrol
CARS (LUTON) LIMITED



FOR YOUR ENTERTAINMENT



Pre-match entertainment is one of our priorities for supporters and we want you to enjoy yourselves. Bingo, Take Your Pick and a band take pride of place this afternoon and we have pleasure in welcoming the Salvation Army to Kenilworth Road this afternoon.

The Salvation Army first opened its doors in Luton in December 1882. For most of the 99 years since then, the bands of the Salvation Army have been heard in the streets of Luton and the current band

comprises of members from the Luton Temple and Luton Citadel Corps.

During the week the bandsmen are engaged in all walks of life, but, on Sundays, they can be found taking part in various services.

Throughout the year, the band participate in festivals and services in addition to playing in local civic and church services.

● Above, a flashback to the last time the Salvation Army joined us.

Building houses to make homes in
at

Warden Hill, Luton
Parkside, Houghton Regis
Two Mile Ash, Milton Keynes
Church Green, Bletchley
Kimbolton Gardens, Bedford.



Barratt

Telephone: Luton (0582) 422771

IN THE EVENT OF TODAY'S
MATCH ENDING IN A DRAW

FA CUP
FOURTH ROUND REPLAY

**IPSWICH
TOWN
v
LUTON
TOWN**

Tuesday 26th January
Kick-off 7.30 p.m.

THE MATCH IS *NOT* ALL TICKET

SEATS:

Tickets will be available from the Ticket Office,
Kenilworth Road (10 a.m. to 12 noon) Sunday
24th January

Prices £4.00 and £3.50

STANDING:

£2 pay at turnstile on the evening of the match.

CROSSWORD SOLUTIONS

Across: 1 & 5. Terry Connor; 7. Reds (Liverpool); 8. Kitchen; 10. England (Wright);
12. Dave; 13. Sweden (1958); 14. Allen.
Down: 1. Terriers; 2. Rodrigues (Southampton); 3. boot; 4. on the ball; 6. Ron
Green; 9. Ian; 11. Alex.

**The wheels for
British industry**
DAF Trucks



**American Can
(UK) Ltd**

MANUFACTURERS
AND SUPPLIERS OF
HIGH QUALITY FOOD
AND DRINK CANS
THROUGHOUT THE
WORLD

HENLYS

first for

TALBOT-PEUGEOT

Luton Way, Dunstable, Beds.
Telephone: 64171.

**LUTON TOWN PLAYERS
DRINK**



MILK

For your nearest depot
ring Luton 23580

JOHN'S JOURNAL

Last week I received a letter from our former manager, centre-half, and captain Syd Owen. He continues to follow the club's progress with much interest although it is now 21 years since he left Luton to join Don Revie at Leeds United.

Syd is now unemployed and with three other colleagues, had to leave Manchester United — where he was youth team coach — when Ron Atkinson was appointed manager and brought in his own staff.

He says it is very strange after being involved in League football for 36 years to be suddenly out of the game. He goes on to say he thinks Luton has a wonderful opportunity to gain

promotion this season and sends his very best wishes to David Pleat, the players and staff and hopes that 1982 will be the year of the Hatters.

Older supporters will know of Syd's wonderful service to the club and I don't think any player was more popular with the fans during his 14 years service.

Today's game always brings out the fans who have not missed a home game for years. Only this week a gentleman rang me and said that he always bought a stand seat for every match and was disappointed that he could not get a seat for this game.

When I told him that any enclosure tickets left after the

Sunday sale would be on sale from the ticket office, his reply was: 'Is the ticket office still in Oak Road?'

The recent bad weather has made a football match rare, so let's hope today we see a game well worthy of the best competition in the world and, of course, the right result.

The answer to the picture competition in the Swindon programme was Mike Saxby and the two winners will shortly be receiving their free tickets for our match with Leicester City.

John Wilkinson
Secretary



**EVERY SUNDAY
MATCH
OF THE
WEEK**
ON ANGLIA TELEVISION



**ANGLIA
TELEVISION**

See the goals and the action every Sunday afternoon



**ANGLIA
TELEVISION**

CENTURY CLUB

Today's game is sure to bring back memories of the 1958-59 season to many of our members. We are looking forward to a game again at Kenilworth Road, and wish our team the best of luck as they get back into action.

The number of postponed games is depressing, and we are obviously going to have a busy time catching up. We hope you are all able to watch the re-arranged games, and guest tickets you have already booked will obviously still be valid. If, for any reason,

you cannot use tickets booked, we would appreciate knowing as soon as possible. It may be that someone else may be able to use the seat.

Social events have also been badly hit, and the latest casualty was our New Year's party. The raffle should have been drawn, but unfortunately, we were unable to get into the club because of the weather conditions. However, the draw was made during the following week, but not before these notes were written, so the list of winners will not appear until the next programme.

The response has been disappointing this year in that not so many counterfoils have been returned, so our contribution to the football club will be reduced, which is a pity at this time when there is no revenue due to lack of games.

However, our thanks to those members who sold their quota, and who also gave us prizes, and also thanks to our friends outside the Century Club who were generous with prizes.

MATCH SPONSOR

Fifty years ago, Bedford commercial vehicles were born in Luton and they've remained at the top of the first division in Britain's transport scene ever since.

When that first Bedford 2-tonner rolled out of Vauxhall's Luton factory in 1931, Luton Town FC — founded in 1885 — was already well on the way to its first half-century. But both the Town and the Bedford commercial vehicle have enjoyed growing status in the years which have followed.

In December 1981, Bedford regained its position as Britain's Number One top-selling truck, which makes the sponsorship of today's great match at Kenilworth Road doubly appropriate — with our local team topping the Second Division and all set for promotion once again.

Toughness and endurance, with an inspired sparkle, ready when that bit extra is called for, are the hallmarks of top-class soccer. But these are characteristics that Bedfords, too, have made the foundation of their success over the past half-century.

The first Bedfords built at Luton were comparatively light-weight trucks but as operators generally ignored weight recommendation on the basis that the trucks had a big appetite for work, Bedfords were

soon being advertised as 'able to take a 50 per cent overload'.

Following the war years, when over 250,000 Bedford army trucks went into service, the Bedford range and production facilities have grown steadily.

When demand for the Bedford range out-grew the Luton facilities, truck production was switched to Dunstable in 1955 and this plant was further enhanced two years ago with the construction of a brand-new production building specialising in the assembly of heavy trucks.

Today, Bedford vehicles range from light and medium vans, to mid-weight trucks — including the new, highly acclaimed TL — to the TM 'heavy' range which caters for weight levels up to 44 tonnes for European markets. And it's very probable that most of the fans who arrived at Luton today by coach will have been carried in a vehicle built on a Bedford chassis.

Most Luton Town supporters, directly or indirectly, are involved with Bedford commercial vehicles — as part of the Vauxhall Motors team, as suppliers, as users of Bedford vehicles, or simply dependent on the goods and services for which these vehicles are employed. So Bedford, as part of the community, feels completely at home in supporting today's Cup-tie on the home ground.



THAT WARMING FEELING...

It's that warming feeling... there was plenty of ice about if anyone wanted a lump to augment their tot of David Pleat's whisky. Our manager pours coach Trevor Hartley a nip when there was a break in the snow and ice clearing operation at Kenilworth Road just before Christmas. The huge bottle was David's reward for being named Manager of the Month for November. Cheers...

Picture: COLIN BOWERMAN
Evening Post/Echo

IPSWICH TOWN FOOTBALL CLUB



*Back row (left to right): Bobby Robson (manager), John Wark, Russell Osman, Paul Cooper, Terry Butcher, Arnold Muhren, Steve McCall, Bobby Ferguson (coach).
Front row: Frans Thijssen, Eric Gates, Mick Mills, Paul Mariner, Alan Brazil.*



SHOP WINDOW



Contrary to one report, fund-raising at Kenilworth Road is going through the proverbial roof. If it wasn't, the club would not be able to function and that is why our lotteries are so important.

Without lotteries, the club couldn't function — and we are not alone in that respect. Souvenirs also play a large and important role in our continued success.

Souvenir sales have shown a healthy increase over the last 12 months, mainly due to our successful mail order division. But there is also a second side to that success story in as much that our office staff have worked tremendously hard.

Without lotteries and souvenirs, many clubs would be crippled. We

sold so much stock over Christmas even we could hardly believe it. But we planned well and there are still many excellent items in stock for that last minute birthday present you may want.

Our stock represents excellent value for money. Why don't you pop in and see us at Kenilworth Road or in the official souvenir kiosks inside the stadium on match days. But a word of warning — beware of imitations. The best souvenirs are available only from us.

Our lotteries and souvenirs division has now merged with ticket sales and the new manager in the box office is John Gornall who has willingly accepted the extra work.

It is a challenging appointment

and one in which John will succeed.

Next season, our ticket sales will be computerised. Our new general secretary, Graham Mackrell is investigating the best system to install which will help us to become even more efficient.

Remember, we are here to serve you whether you want to buy lottery tickets, souvenirs or match tickets.

Finally, why don't you become one of our growing army of lottery agents. We offer good commission and other benefits and a call at the pools office in Kenilworth Road will provide you with full details.

MIKE HARDWICKE
Commercial Manager



ACTION

We earned the right to meet Ipswich today by narrowly beating Swindon Town 2-1 at Kenilworth Road earlier this month. It was a cliffhanger right to the very end when skipper Brian Horton scored his first goal for us — and the winner — after 88 minutes.

Above: David Moss steps up to stroke the ball past the keeper from a penalty for our first goal.

Below: It's there . . . Horton sidefoots the winner past the keeper.

Right: The Swindon keeper makes a brave save at Steve White's feet.

LUTON TOWN 2 SWINDON TOWN 1



VISITORS



IPSWICH TOWN



We could not have wished for more attractive visitors than UEFA Cup holders, Ipswich Town, to Kenilworth Road today and we know supporters from both sides are in for a cracking match.

Our visitors are aiming to achieve what many critics feel is impossible and even their manager, the popular Bobby Robson, appreciates the size of the task in front of him.

'It is going to be very difficult to emulate last season,' he said after Ipswich finished runners up in the First Division. 'But somehow, I have to try and

explain to my players that they must play even better this season.

'That is asking an awful lot but I have enough confidence in their ability and professionalism to think they can do it.'

No-one would argue that Ipswich were one of the best, if not THE best, footballing sides in the First Division last season.

At one point, they were in with a chance of a glorious treble by lifting the League Championship, UEFA Cup and FA Cup. But the fixtures piled up, the pressures mounted and they lost two

international defenders when Scotland right-back George Burley seriously injured a knee and Kevin Beattie, England's centre-half, broke an arm.

Paul Mariner, Frans Thijssen, Alan Brazil, Arnold Muhren and Mick Mills all missed important matches as Ipswich faced some of their most crucial encounters.

Ipswich were beaten by Manchester City in extra-time in the FA Cup semi-final and Aston Villa pipped them for the League Championship. But, with every English fan behind them, they beat AZ67 Alkmaar 5-4 on ag-

IPSWICH TOWN ROLL-CALL

Player	Previous Clubs	Full International	Date Signed
Alan Brazil	—	Scotland	Pro May 1977
George Burley	—	Scotland	Pro June 1973
Terry Butcher	—	England	Pro August 1976
Paul Cooper	Birmingham	—	July 1974
Eric Gates	—	England	Pro October 1972
Steve McCall	—	—	Pro October 1978
Paul Mariner	Plymouth	England	October 1976
Mick Mills	—	England	Pro 1965-66
Arnold Muhren	Ajax, Twente Enschede	Holland	August 1978
Kevin O'Callaghan	Millwall	Eire	January 1980
Russell Osman	—	England	Pro March 1976
Tommy Parkin	—	—	Pro December 1973
Kevin Steggles	—	—	Pro December 1978
Frans Thijssen	Nijmegen, Twente Enschede	Holland	February 1979
Robin Turner	—	—	Pro April 1973
John Wark	—	Scotland	Pro August 1974

RUSSELL OSMAN ▶



LINE-UP

gregate in a thrilling UEFA Cup Final to take a major prize from their season.

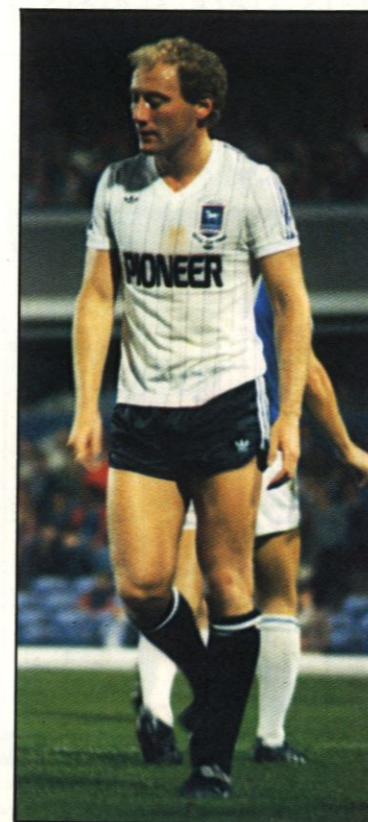
This season, they have gone to the top of the First Division before the half-way stage of the season has been reached and we appreciate how difficult our task will be today.

Last season, Ipswich were involved in 66 competitive matches when John Wark emerged as top scorer with 36 goals including with another 58 spread between Mariner, Eric Gates and Brazil while the Dutch pair, Thijssen and Muhren, contributed 15 between them.

Burley's knee problem flared up in an FA Cup-tie at Shrewsbury in January. It was the first major injury of his career and he recalls that it was 'a hammer blow' to hear a specialist informing him he would be out of the game for at least six months.

His loss to Ipswich was damaging, even though they had young Steve McCall developing to the stage where he won two England Under-21 caps at the end of the season.

Coach Bobby Ferguson said recently: 'George is the complete player and when he is back to his best, I wouldn't back anybody to beat us. He has tremendous dimensions for going forward and has the fastest eye for a break in the First Division.



ALAN BRAZIL

'Players like him do not grow on trees, and after we lost him last season, we were no longer the brilliant side we had been in the first part of the season.'

Burley's absence reduced the number of options Ipswich had when injuries affected other departments. With McCall and Mills required at full-back, there was not the normal alternative of pushing either player into

midfield, and the situation was worsened because of further injuries afflicting the unlucky Kevin Beattie.

The former England defender seemed to be over the worst of his numerous knee operations when he was back in the squad for the FA Cup semi-final at Villa Park, but he fractured an arm during the defeat by Manchester City and was still unavailable at the start of the new season because of knee problems.

However, Ipswich have a side which almost selects itself these days. Paul Cooper is one of the best goalkeepers in the business, playing behind the solid back line of Mills, Osman, Butcher and McCall. In midfield, there is the blend of all talents between Wark, Thijssen, Muhren and Gates, while, up front, there are few more consistent strikers than Mariner and Brazil.

Eire international Kevin O'Callaghan is available to cover in a number of positions and other players used this season include Kevin Steggles, midfield man Tommy Parkin and striker Robin Turner. And there could be a new name on the team-sheet if Cooper is ever injured, for Ipswich have signed 38-year-old goalkeeper John Jackson, formerly with Palace, Orient and Millwall as standby keeper.

POINTS ATTENDANCES GOALS SCORED LEAGUE TABLES

Opponents	Result	Attendance	Points	Position	Findlay	Stephens	Aizlewood	Horton	Saxby	Donaghy	Hill	Stein	White	Antic	Ingram	Turner	Moss	Fucillo	Goodyear	Small	Aleksic	Judge	Own Goal
Goals Scored							3	1	1	6	2	6	14	2			9	1	1				1
1981																							
August																							
29 Charlton Athletic	3-0	8,776	3	1	2	3	4	5	6	7	8	9	10	11									OG
September																							
1 Queens Park Rangers	2-1	18,703	6	1	2	3	4	5	6	7	8	9	10	11									
5 Bolton Wanderers	2-1	6,911	9	1	2	3	4	5	6	7	8	9	10	11									
12 Sheffield Wednesday	0-3	12,131	9	3	2	3	4	5	6	7	8	9	10	11									
19 Leicester City	2-1	14,159	12	2	2	3	4	5	6	7	8	9	10	11									
22 Cardiff City	2-3	9,015	12	4	2	3	4	5	6	7	8	9	10	11									
26 Watford	4-1	12,839	15	2	2	3	4	5	6	7	8	9	10	11									
October																							
3 Orient	3-0	5,584	18	1	2	3	4	5	6	7	8	9	10	11									
6 Wrexham (LC2 - 1L)	0-2	6,146	1	1	2	3	4	5	6	7	8	9	10	11									
10 Oldham Athletic	1-1	8,403	19	1	2	3	4	5	6	7	8	9	10	11									
17 Grimsby Town	6-0	9,090	22	1	2	3	4	5	6	7	8	9	10	11									
24 Wrexham	2-0	4,069	25	1	2	3	4	5	6	7	8	9	10	11									
28 Wrexham (LC2 - 2L)	1-0	3,453	28	1	2	3	4	5	6	7	8	9	10	11									
31 Crystal Palace	1-0	11,712	28	1	2	3	4	5	6	7	8	9	10	11									
November																							
7 Derby County	3-2	10,784	31	1	2	3	4	5	6	7	8	9	10	11									
14 Blackburn Rovers	1-0	9,862	34	1	2	3	4	5	6	7	8	9	10	11									
21 Newcastle United	2-3	21,031	34	1	2	3	4	5	6	7	8	9	10	11									
24 Bolton Wanderers	2-0	8,889	37	1	2	3	4	5	6	7	8	9	10	11									
28 Rotherham United	3-1	11,061	40	1	2	3	4	5	6	7	8	9	10	11									
December																							
5 Shrewsbury Town	2-2	5,259	41	1	2	3	4	5	6	7	8	9	10	11									
28 Norwich City	3-1	19,348	44	1	2	3	4	5	6	7	8	9	10	11									
1982																							
January																							
2 Swindon Town FAC 3	2-1	9,488	45	1	2	3	4	5	6	7	8	9	10	11									
19 Charlton Athletic	0-0	7,013	45	1	2	3	4	5	6	7	8	9	10	11									
February																							
6 Sheffield Wednesday																							
13 Orient (5)																							
20 Watford																							
27 Oldham Athletic																							
March																							
2 Cambridge United																							
6 Grimsby Town (6)																							
12 Wrexham (LCF) (Friday)																							
16 Barnsley																							
20 Crystal Palace																							
23 Chelsea																							
27 Derby County																							
April																							
3 Blackburn Rovers (SF)																							
9																							
10 Cambridge United																							
12 Norwich City																							
13																							
17 Newcastle United																							
24 Rotherham United																							
30 Shrewsbury Town																							
May																							
5 Cardiff City																							
8 Chelsea																							
15 Barnsley																							
22 FA Cup Final																							
To be arranged																							
Queens Park Rangers																							

TODAY'S SCORECHECK

FA CUP FOURTH ROUND

Brighton v Oxford
Blackpool v Q.P.R.
Chelsea or Hull v Wrexham
Crystal Palace v Bolton
Gillingham v W.B.A.
Manchester City v Coventry
Newcastle v Grimsby
Norwich City v Doncaster
Bristol City v Aston Villa
Shrewsbury v Burnley

Sunderland v Liverpool
Hereford v Leicester City
Tottenham v Leeds United
Watford v West Ham United

FA CUP THIRD ROUND

Carlisle v Huddersfield
DIVISION ONE
Nott'm Forest v Notts County
Wolves v Everton
Stoke v Manchester United

MIDLAND YOUTH LEAGUE				
Wolves	3	3	0	10
W.B.A.	3	2	1	8
Luton Town	3	2	0	8
Leicester City	3	1	1	6
Bristol City	4	1	1	4
Birmingham	2	1	0	4
Swindon	2	1	0	4
Peterborough	5	1	0	4
Coventry	1	0	1	1
Northampton	2	0	0	2

FOOTBALL COMBINATION FIXTURES 1981-82

Aug. 29	Orient	4-0
Sept. 1	Tottenham Hotspur	1-0
Sept. 5	Oxford United	2-1
Sept. 12	Leicester City	1-1
Sept. 19	Queens Park Rangers	2-0
Sept. 26	Watford	0-5
Oct. 3	Bristol City	1-1
Oct. 10	Crystal Palace	4-0
Oct. 17	Swindon Town	0-3
Oct. 24	Ipswich Town	2-3
Nov. 3	Hereford United	1-0
Nov. 7	Arsenal	1-1
Nov. 10	Norwich City	1-3
Nov. 14	Fulham	2-2
Nov. 17	Birmingham City	1-1
Nov. 25	Tottenham Hotspur	1-2
Nov. 28	Southampton	3-5
Dec. 5	Chelsea	2-1
Jan. 6	West Ham United	1-1
Jan. 23	Queens Park Rangers	
Feb. 1	Leicester City	
Feb. 8		
Feb. 13	Bristol City	
Feb. 20	Watford	
Feb. 27	Crystal Palace	
Mar. 6	Swindon Town	
Mar. 13	Ipswich Town	
Mar. 20	Plymouth Argyle	
Mar. 27	Arsenal	
April 3	Fulham	
April 10	Birmingham City	
April 12	Reading	
April 17	Hereford United	
April 24	Southampton	
April 27	Chelsea	
May 4	Norwich City	
May 8	West Ham United	
May 15	Bristol Rovers	
May 22		

To be arranged
Plymouth Argyle (A)
Bristol Rovers (H)
Reading (H)
Oxford United (A)
Orient (H)

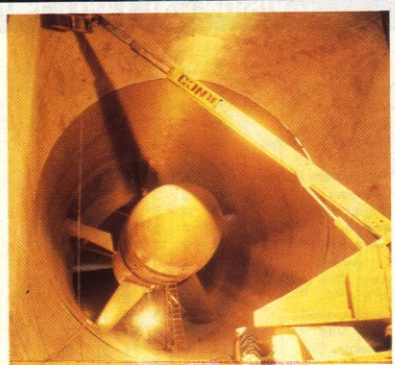
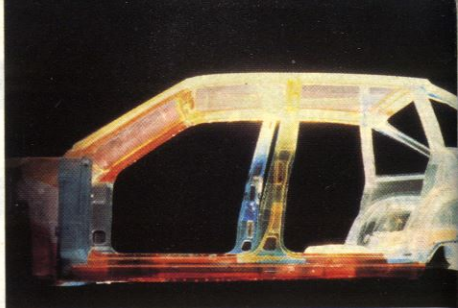
DIVISION TWO TABLE 1981-82

	P	W	D	L	F	A	W	D	L	F	A	Pts
Luton Town	20	7	0	2	24	10	7	3	1	20	10	45
Oldham Athletic	23	6	6	1	20	13	5	2	3	14	11	41
Watford	20	5	3	2	18	11	5	2	3	13	13	35
Q.P.R.	21	7	3	2	16	6	3	1	5	12	14	34
Sheffield Wednesday	20	5	3	2	16	14	5	1	4	10	11	34
Chelsea	21	5	3	2	16	12	4	3	4	14	17	33
Blackburn Rovers	23	4	2	4	8	7	4	6	3	19	17	32
Barnsley	19	7	1	1	17	4	2	2	6	13	17	30
Charlton Athletic	23	6	2	3	19	13	2	4	6	11	20	30
Norwich City	21	6	3	2	16	10	2	1	7	8	20	28
Newcastle United	19	6	2	1	15	5	2	1	7	11	16	27
Leicester City	19	3	4	2	10	7	3	4	3	15	13	26
Cardiff City	20	5	1	5	13	16	2	2	5	9	14	24
Orient	21	4	3	3	12	11	3	0	8	7	15	24
Crystal Palace	18	6	0	4	13	9	1	2	5	2	7	23
Shrewsbury Town	18	5	2	2	15	10	1	3	5	4	14	23
Shrewsbury	19	4	3	2	14	11	2	1	7	11	22	22
Rotherham United	18	6	1	2	20	9	0	2	7	5	18	21
Cambridge United	18	5	0	4	15	11	2	0	7	10	18	21
Bolton Wanderers	21	5	2	5	16	17	1	1	7	3	14	21
Wrexham	19	3	0	6	9	14	2	4	4	12	13	19
Grimsby Town	17	1	3	4	9	12	3	2	4	9	17	17

Up to and including Wednesday 20th January 1982

DIVISION ONE TABLE 1981-82

	Home							Away				
	P	W	D	L	F	A	W	D	L	F	A	Pts
Ipswich Town	18	7	1	1	18	10	5	1	3	17	13	38
Manchester City	21	6	4	2	20	10	4	1	4	10	13	35
Southampton	20	8	0	2	25	12	2	4	4	11	17	34
Manchester United	19	6	3	1	15	5	3	3	3	14	11	33
Swansea City	21	7	2	1	18	7	3	1	7	13	26	33
Nottingham Forest	19	6	2	2	13	9	3	3	3	12	15	32
Liverpool	19	5	3	3	18	11	3	3	2	11	9	30
Brighton	20	4	5	2	18	13	4	4	2	7	6	30
Arsenal	17	4	2	1	5	2	5	1	4	11	10	30
Everton	21	7	2	2	20	11	1	4	5	9	16	30
Tottenham	17	4	0	5	14	13	5	2	1	12	6	29
West Ham United	18	4	3	1	19	13	2	5	3	14	13	26
W.B.A.	18	3	4	2	12	7	3	2	4	11	12	24
Leeds United	19	5	5	0	15	6	1	0	8	5	26	23
Aston Villa	20	2	3	3	9	10	3	4	5	14	14	22
Coventry City	21	5	2	4	21	15	1	2	7	10	21	22
Stoke City	20	4	0	6	14	13	2	3	5	10	17	21
Notts County	18	4	4	1	14	12	1	1	7	11	19	20
Wolverhampton	19	4	2	3	7	7	1	2	7	6	20	19
Birmingham City	18	4	3	1	19	13	0	3	7	7	15	18
Sunderland	19	1	2	6	6	17	2	3	5	10	16	14
Middlesbrough	18	2	3	4	10	15	0	3	6	6	15	17



Vauxhall. Backed by the world-wide resources of General Motors.

Vauxhall cars are designed in Europe specifically to meet the demanding requirements of European motorists.

The advanced technology in today's Vauxhalls though, is made possible by the Company being part of General Motors, the world's largest car and truck manufacturer.

At General Motors' 330-acre Technical Centre in the US, research and development facilities are on an unrivalled scale. Aerodynamics, new engines, transmissions, electronics, new propellants, manufacturing techniques – these and every other aspect of car design are the subject of intensive development providing backing for General Motors' divisions throughout the world.

The facilities are further strengthened by General Motors' research and development centres such as the Millbrook Proving Ground in the UK.

It enables Vauxhall to introduce new technology and advanced design features ahead of the field thus benefiting our customers.

It is well-proven technology aimed at designing fuel-efficient, stylish and practical cars that represent outstanding value for money.

