

THE HATTER

Official Matchday Magazine Price 50p



TODAY'S MATCH
IS SPONSORED BY:
R. W. UNWIN & CO LTD



FA CUP THIRD ROUND
Saturday 2nd January 1982
Kick-off 3.00 p.m.

LUTON TOWN v SWINDON TOWN

LUTON TOWN FC



70-72 Kenilworth Road

Luton

Tel: 411622

Season 1981-82

Chairman:
Denis Mortimer

Directors:
R. L. Banks, D. J. Evans
E. S. Pearson, H. Richardson
R. J. Smith, J. R. Smith
D. J. Pleat (Team Manager)

President:
T. Hodgson

Vice-Presidents:
J. A. C. Bain (Deputy President)
Lord Hill, Sir Reginald Pearson OBE,
A. J. Berry, J. B. Brent,
B. Cole, B. England,
N. S. Fookes, G. B. Holland,
C. Holloway, I. E. Holmes,
C. J. Hudson, R. Larkinson,
L. Leppington,
Eric Morecambe OBE, R. Safranek,
E. Waller, R. Unwin

Administration:

General Secretary:
Graham MacKrell

Club Secretary:
John Wilkinson

Project and Advertising Manager:
Mike Beevor

Commercial Manager:
Mike Hardwicke

Catering Manager:
Clive Hustwitt

Youth Development Officer:
Colin Ball

Travel Organiser:
Mrs C. Ball

Auditors:
Arthur, Young, McClelland,
Moore & Co.

Photographer:
Gareth Owen

Playing:

Coaches:
David Coates, John Moore and
Trevor Hartley

Physiotherapist:
John Sheridan

Doctor:
W. A. C. Berry MBBS

MATCH PREVIEW

Old Jack Frost and his winter weather has played havoc with David Pleat's recent schedules.

Games against Chelsea and Barnsley were postponed. We made a terrific effort to get our Kenilworth Road pitch playable for the home match against Chelsea.

Apprentice professionals and even our coaches helped the groundstaff clear snow from the pitch and terraces. But sharp frost wrecked our plans and, when Barnsley told us they had no chance of playing, all looked lost.

We did, however, manage to find some action when an outbreak of flu at Leeds caused their match at Brighton to be called off.

Our manager immediately arranged a friendly game at the Goldstone Ground, free of snow, where over 2,000 fans braved freezing conditions to watch us lose narrowly 1-0.

Christmas printing schedules gave our magazine editor a headache just before the festive season started. But thanks to all his contributors, we managed to weather another storm.

You may have noticed in today's magazine that there are no match action pictures on the usual pages. The postponement of the Chelsea and Barnsley matches meant our

photographer, Gareth Owen, has had a very quiet time with his camera. We hope normal service will be resumed as soon as possible.

Today's opposition brings Swindon Town to Kenilworth Road for an FA Cup-tie. There is little doubt of the importance of progress in the Cup because it provides us with the chance to make additional revenue.

Two blank Saturdays and, at the time of writing these notes, we didn't know if our Boxing Day morning game against Cambridge United would be played, meant we didn't take anything from attendance receipts.

The situation is even worse for some of the smaller Third and Fourth Division clubs who were looking for a drastic improvement in the weather over Christmas.

Anyway, we offer a warm welcome to Swindon Town, their fans, players, management team and directors.

Details of today's opponents are on pages 28 and 29. There's also a team picture for our young fans to have autographed as they wait for the players to emerge after the match.

Enjoy the match ... and drive safely on the way home. We'll see you again next Saturday when QPR provide the opposition.



PERSONALITY PROFILE



One fan's personal view of some of the great names of Luton Town.

By BRIAN SWAIN

BRAIN against brawn is very often one of the ingredients of a good soccer match. And if Luton Town do achieve the ambition of returning to the First Division at the end of this season, some of the brain power they had 25 years ago won't come amiss.

A major reason for the success of the side which won promotion in 1955 was that it was a well settled combination, and the defence in particular was a reliable unit.

We had a perfect combination of full-backs, both Irish internationals, and in the promotion season campaign of 1954-55 Seamus Dunne and Bud Aherne both played in every League game.

Dunne was quicksilver in thought and deed, yet for all the pleasure he gave us I used to hold Aherne in higher regard.

He still lives and works locally, so if he reads this I hope he won't be offended if I say I remember him best as a player who always relied on brain to oppose brawn, and to counteract opponents who might be considered better players.

Bud came to Luton for

£8,000 from Belfast Celtic and few players have been more consistent or loyal in their careers.

He played at left-back in an era when teams all fielded two wingers. Men like Matthews and Finney became national hero figures for being adept at the classic football attacking scheme — take on your man, go past him, get to the goal-line and then cross the ball for a centre-forward to score the goals.

It made for excitement and entertainment for the crowds — and headaches for full-backs.

Aherne was certainly not the fastest footballer you have ever seen. And if he and a winger set off together in a chase for the ball, the chances were the winger would have won every time.

The strange thing was that although we always thought that might happen, it never did. But Aherne became a great player by doing the obvious — he developed an uncanny knack of reading the game and anticipating moves by opponents even before attacks had developed.

Wingers who might have expected a field day found themselves shut out and frustrated by a full-back whose positional play gave him an advantage every time.

Aherne was never as spec-

tacular as Dunne, yet just as effective, and few players could strike a ball on the volley more cleanly than Aherne. In his day, the big boot upfield was the only creative requirement asked by managers of defenders, but Aherne developed that into something of an art.

It was nothing to see a 50-yard clearance leave his boot and drop accurately into the path of the front runners.

Opponents probably thought it was fluke. We who watched the Town regularly soon realised that it was a lot more than luck. And with the squad so settled, players got to know what to expect in the way of service from the men at the back, and the general level of football was all the better for it.

Always cool and unruffled, Aherne seemed to walk through his matches, and his elegance found a fitting stage with Luton Town in the First Division.

He eventually lost his place to Ken Hawkes after nine seasons as a Luton Town regular, and retired after a spell helping the young reserves.

We've had some good full-backs since then, of course, but none as consistent over such a long period as Bud Aherne.

DAVID'S DIARY

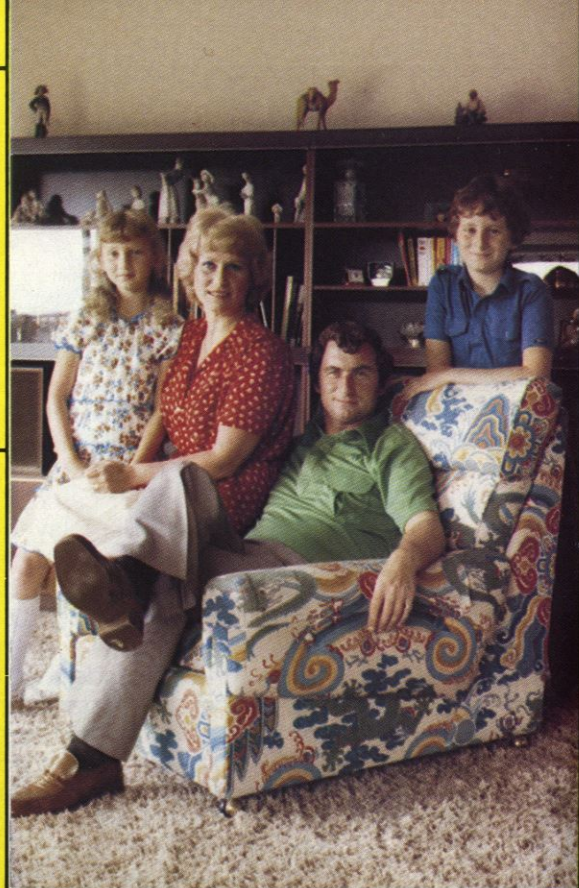
Today is a special day. The FA Cup has always been the 'one off' competition of a great glory which all players and staff have ambition to win.

Our record in this competition has been nothing to be proud of in recent seasons. In my first season as manager, we were tumbled out on a snow bound pitch at York. Two seasons ago, Swindon — enjoying a most successful season — deservedly beat us at Luton. Last season, we were beaten at Newcastle when confidence was high after a splendid cup win at Orient.

In the Cup, you have only 90 minutes. There is no next week to compensate for a defeat. Luck can play a big part, but we must try and make our own luck. A solid performance will be needed because Swindon, ably managed by record-breaking John Trollope have a good Cup tradition and will be determined to succeed.

By the time you read these notes, we hope our injury problems will have cleared up and Ricky Hill, Jake Findlay and Mick Saxby are all fit enough to be considered for action.

Clive Goodyear has played excellently at centre half, whilst Mick Saxby has been out and it is good to have healthy competition for places. At Shrewsbury, Alan Judge had a fine game deputising for injured Jake Findlay, whilst Milija Aleksic was suffering from a back injury prior to



returning to Spurs. Alan has the ability and application to be a first class League goalkeeper. His opportunity will come.

Other reserve players have had their opportunities restricted by the consistent form of our senior players, but it is vital that they remain optimistic and make the most of the chances when they come.

May I take the opportunity as we enter the New Year of thanking the Board, our supporters and staff for their backing, that has enabled our talented players the opportunity to play their football in a relaxed environment.

The intense pressure that is commonplace at many clubs due to lack of sound management and therefore financial strain has made for a pressure cooker atmosphere, which cannot be good for players trying to progress and express themselves.

Happy New Year to you all.



COLOUR SHOT

The boot room — one of the most important places of any pre-match activity. Apprentice professionals prepare the boots for the first team before the game and are pictured with skipper Brian Horton and full back Kirk Stephens discussing which ones to wear.

IVOR HOLMES



LUTON 56622

R. W. UNWIN & CO LTD

Pharmaceutical and Fine Chemicals
and
Chemical Intermediates

Prospect Place
Welwyn, Herts
AL6 9EW
Tel: Welwyn 6441/2/3/4

GRAHAM FORD LTD

TRADING AS
LOCKHART BENNETT

*Comprehensive Builders Merchants
For Home and Garden*

Depots:

Luton — Kingsway 31199
Dunstable — Beale Street 603111
Leighton Buzzard — Leighton Road 373486

Willis-Dawson Ltd
Builders and Developers
Leighton Buzzard

Tel: Leighton Buzzard 372557

See how far your money goes when you travel with

TRAVEL CENTRE

Come in and get the best deal going
47 GEORGE STREET, LUTON
Tel: 421751

15a HIGH STREET NORTH, DUNSTABLE
Tel: 609677

J. F. MEADE LTD

Civil Engineering
Building Contractors
Plant Hire

14 Tennyson Road
Luton, Beds
Tel: 0582 287401/414759



Your Discount Choice

**LUTON SPORTS
PRESS LTD**

THE LOTTERY TICKET SPECIALIST

Tel: Luton 28757

Discounts on all Tyres and Exhausts
at



Manor Road, Luton. Tel: 410410
122-124 Leagrave Road, Luton. Tel: 37835
162-170 High Street South, Dunstable. Tel: 69913

**Cleandustrial
Services Ltd**

The Professional Approach to
Your Cleaning Problems

84 Aldermans Hill N13



IN FOCUS



Want to be an escort or a mascot for our home games? The only way you can do that is by enrolling as a member of our popular Junior Hatters Club. Members' names go into the hat to decide who the lucky youngsters are for every home match. Pictured here are the four escorts for the home game against Rotherham. Today's Junior Hatters news is on pages 10 and 11.

**MEMBERS
OF THE**

KENILWORTH SUITE

AMERICAN-CAN (UK) LTD
WALTON ROAD, CALDECOTTE
BOW BRICKHILL
MILTON KEYNES MK7 8AE

BARRATT DEVELOPMENTS
(LUTON) LTD
PO BOX 5, BARRATT HOUSE
LUTON L42 7XJ
TEL: LUTON 422771

A. G. BERRY ESQ.
BRENGREEN HOLDINGS LTD
61 CHEAPSIDE, LONDON EC2V 6AX
TEL: 01-248 6026

B. COLE ESQ.
CLEANDUSTRIAL SERVICES LTD
PALMERS GREEN, LONDON N13
TEL: 01-882 4626

FILMERGRAPHIC ASSOCIATES
PHOTOTYPESETTING AND PRINTING
BAINSON HOUSE, ALTON ROAD
LUTON

TEL: LUTON 36407
FINE STAMPS LTD
BILTON WAY, LUTON
TEL: LUTON 36761

N. S. FOOKES ESQ.
N. S. FOOKES, ENGINEERING
SERVICES LTD
45 LATIMER ROAD, LUTON
TEL: LUTON 26139

MR E. FOUNTAIN
VAUXHALL MOTORS
LUTON

S. GOLBY, FREDK RAY LTD
STANBRIDGE ROAD
LEIGHTON BUZZARD
TEL: 372241

BRIAN E. HANDSCOMBE
(LIFE AND PENSIONS BROKER)
48 ALMA STREET, LUTON LU1 2PL
TEL: LUTON 425921/4

G. B. HOLLAND ESQ.
G. B. HOLLAND & CO. LTD
MOTHERWELL WAY, LONDON ROAD
WEST THURROCK, ESSEX

MR I. E. HOLMES
IVOR HOMES LTD
82-88 MARSH ROAD, LUTON
TEL: LUTON 56622

C. J. HUDSON ESQ.
E. W. HOLDINGS LTD
6 UNION ST., LUTON
TEL: LUTON 30511

RICHARD C. LARKINSON
(BALDOCK) LTD
TWENTY PENCE ROAD
COTTENHAM, CAMBS.

P. LAYCOCK, LUTON SPORTS PRESS
HAZELBURY CRESCENT, LUTON
TEL: LUTON 28757

MARK JAMES (SALVAGE) LTD
16 WEST STREET, DUNSTABLE
TEL: DUNSTABLE 605944

MARSHALLS OF LUTON
(BUILDERS) LTD
SARUM ROAD, LUTON
TEL: LUTON 597666/9

DR & MRS G. L. PLESTER
9 BRIARS CLOSE, NUNEATON
WARWICKSHIRE

A. HUNTER ESQ.
RAVENMERE LTD, ALLRIC HOUSE
21 FARLEY HILL, LUTON
TEL: LUTON 32640

RICHMOND ELECTRONICS
(MARKYATE) LTD
HICKS ROAD, MARKYATE, HERTS.
TEL: LUTON 840761

ROBINSON METAL (LUTON) LTD
CALEB CLOSE
464 DUNSTABLE ROAD, LUTON
TEL: LUTON 53866

R. S. SAFRANEK ESQ.
NEAHURST LTD, LONDON RD.
LOWER STONDON, HITCHIN
TEL: HITCHIN 94-813545

TRICENTROL CARS (LUTON) LTD
326-340 DUNSTABLE ROAD, LUTON
TEL: LUTON 31133

T. & H. TYRE SERVICES LTD
MANOR ROAD, LUTON
TEL: LUTON 27665

R. W. UNWIN ESQ.
R. W. UNWIN & CO. LTD
PROSPECT PLACE, WELWYN HERTS.
TEL: WELWYN 6441

WALLSPAN BEDROOMS
INDUSTRIAL ESTATE
MAULDEN ROAD, FLITWICK, BEDS.
TEL: FLITWICK 3621

SPOTLIGHT ON STEVE WHITE



SPOTLIGHT

The body swerve displayed in today's Spotlight picture has provided problems for many defenders this season. And it's also helped Steve White to establish himself as Luton's leading scorer. But there was a time when Steve must have wondered whether he was going to find his scoring touch at Kenilworth Road after he joined us in a £175,000 transfer from Bristol Rovers in December 1979. He made only two appearances, in addition to seven as substitute, and failed to score for the rest of that season. Last season, he made 19 full appearances and grabbed seven goals in the Town's Second Division programme. But White has burst onto the promotion scene with a vengeance this term and, until Christmas, had poked the ball past opposing keepers 13 times including four in the 6-0 thrashing of Grimsby on October 17th.



His form this season could go a long way to helping us reach that big First Division goal because he started on the right foot by scoring in the 3-0 victory over Charlton on the opening day back in August.

He was responsible for scoring the two goals which gave us a well deserved 2-1 victory at Leicester City and continued to hit the headlines in the subsequent matches leading up to Christmas. None of his seven goals last season were reserved for Cup-ties and Steve may have been reserving the first for today's match. He's settled in Luton since that move from Bristol Rovers, and the Town's supporters will be looking for a few more goals from the West Country youngster before the end of the season.

Complete fitted bedrooms // from around £450

Wallspan Bedrooms

**FREE DESIGN
FREE FITTING**

see the full range at

LUTON Unit 174, Bute Street, Arndale Centre, Luton, Beds. Tel: Luton 23015	BEDFORD 59 Midland Road, Bedford. Tel: Bedford 211327	STEVENAGE 18 Market Place, Stevenage, Herts. Tel: Stevenage 724853	WATFORD 17/19 Queens Road, Watford, Herts. Tel: Watford 38388
--	--	---	--

AFTER THEIR EARLY EXIT FROM THE LEAGUE CUP, LEATOWN HAD A FREE DATE FOR A FRIENDLY IN CENTRAL AMERICA AGAINST GUATADOR. "BOBBIN" DINO WAS PLAYING FOR THE NATIONAL SIDE.

THE SOCCER STRIP THAT'S ONLY IN THE HATTER. HEAD FOR HEIGHTS!

EPISODE ELEVEN

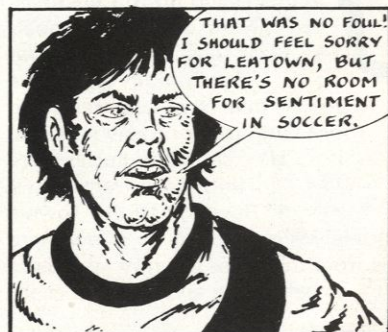
by Ray Aspden



THE LEATOWN PLAYERS WERE SURPRISED TO HEAR THE WHISTLE...



... THE VISITORS WERE ASTOUNDED; BUT THE GUATADOR NATIONALS TOOK IT FOR GRANTED THEIR REFEREE WOULD BE ON THE HOME SIDE.



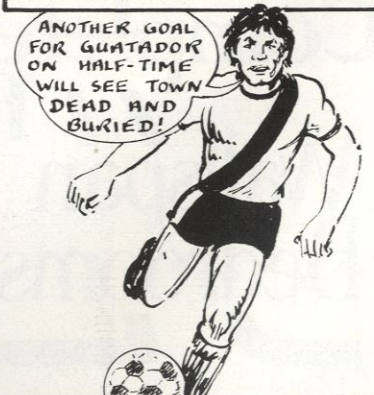
WITHOUT ANY EFFORT, GUATADOR WERE 1-0 UP; THAT'S WHY SOCCER'S SUCH A FUNNY GAME!



AMAZINGLY, THE REFEREE POINTED TO THE SPOT!



BOBBIN RAN UP TO TAKE THE HEARTBREAKING SHOT...



FIND OUT WHICH WAY BOBBIN'S LOYALTIES LIE - CLUB OR COUNTRY - IN EPISODE 12.

JUNIOR HATTERS



THE MASCOT...



DONNA KEENS

A Happy New Year to all Junior Hatters, and our young supporters everywhere.

1981 has been a great year in so many ways. The Junior Hatters Club has long passed its thousandth member, and new members continue to join us day by day. Keep encouraging your friends to join us, and help make our junior club worthy of the name 'Luton Town Junior Hatters', a club to be proud of and among the best in the League.

Looking back over the year, we can indeed be proud of our achievements — our new clubroom with its souvenir and refreshment bars, our meetings with the players, especially on our Camera Day, our visitors and new friends from other Football League clubs, our five-a-side football matches, our visits to other clubs and places of fun and interest — our 'get-togethers' with parents and helping friends — the numerous parties of young people from Milton Keynes, Stevenage, Aylesbury, St Albans, Hemel Hempstead, Welwyn Garden City, Hitchin, Bedford and many more places outside Luton, to our home matches.

Well over 12,000 young people have been able to see Luton Town play as a result of the *Evening Post/Echo* sponsorship, many of them for the first time in their lives. But most of all, I look back and recall your cheers for Luton Town!

Looking forward to 1982 means more visits, more five-a-side football — more chances to meet the players — but I look forward most of all to seeing you

and hearing you cheer for Luton Town. Let's all help to make this New Year a memorable and unforgettable one for the Hatters. Join with me in wishing David Pleat, all the players, the coaches, all the hardworking staff at Kenilworth Road, and all our supporters everywhere a truly happy, prosperous, and above all a successful and victorious New Year.

MASCOTS AND ESCORTS

Our mascot and escorts for today's game were originally selected for the Cambridge game, but postponements have caused problems. In order not to disappoint our mascot/escorts team I have had to do a shunting exercise. Unfortunately, one of our escorts, Lee Brown is unable to be with us today, and his place has been taken at very short notice by one of our several young American supporters from the air base at Chicksands, Kevin Kristberg. Kevin is aged 8 and attends the school on the base, and is a member of the local Cub pack. He plays football for his school, and is a very keen Luton supporter.

Mascot: Donna Keens of Strawberry Field, Luton. Donna is 13 and attends Lea Manor High School. She lists her interests as football, swimming and netball.

Escorts: Karl Howkins of Turnpike Drive, Luton. Karl is 9-years-old, and attends Warden Hill Junior School. His interests include swimming, football and pop music, and he plays for Warden Hill Cubs.

David Capp, aged 11 years, lives at Verulam Gardens, Luton. He attends Wauluds Junior School. His main interests are football and reading and he plays for his school team.

Kevin Kristberg of RAF Chicksands. Kevin is aged 8 and attends the school on the base, and is a member of the local Cub pack. He plays football for his school, and is a very keen Luton supporter.

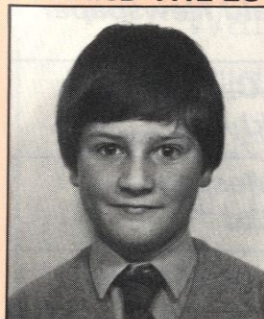
Dean Harris, aged 10 years, lives at Kingsley Road, Luton. He attends Icknield Junior School. He lists football, swimming, boxing and reading among his interests, and plays for his school 'B' team and Foxdale Community team.

Apart from the thrill and enjoyment of being with the team for their warm up, these lucky youngsters will keep the kit they are given to wear, thanks to the generosity of David Evans, one of the club's directors. Look out for another draw soon, and here's luck to those whose names have not yet appeared.

COLIN BALL

Youth Development Officer

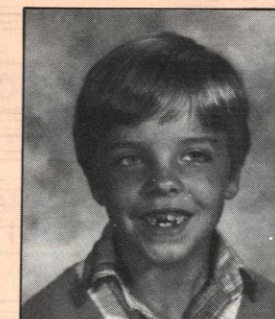
... AND THE ESCORTS



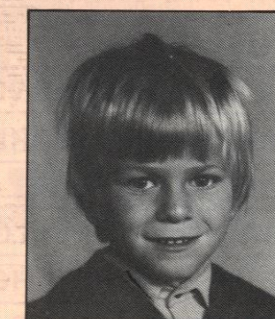
KARL HOWKINS



DAVID CAPP



KEVIN KRISTBERG



DEAN HARRIS



Brian Horton and the team wish all Town fans a Happy New Year



R. W. UNWIN & CO LTD	The Herald Newspaper
NEAHURST LTD	
N. S. FOOKES ENGINEERING SERVICES LTD	Richard C. Larkinson (Baldock) Ltd
BERNARDS WORLD OF SPORT	Sefact Message Centre Ltd
CLEANDUSTRIAL SERVICES	
BARRATT DEVELOPMENTS (LUTON) LTD	Hemmings & Capey (Leicester) Ltd
E. W. HUDSON HOLDINGS LTD	
FILMERGRAPHIC ASSOCIATES	

TRAVEL TIME

Travel news these last few weeks has been a bit scarce with games being postponed due to bad weather.

Hopefully, today sees us with a game, getting ready for our next trip to Charlton. Details of this will appear in the Queens Park Rangers magazine.

I do admire the optimism of our travelling supporters, who hopefully rang me to book seats for the Barnsley game. I write these notes before knowing whether we travelled to Norwich, but bookings were coming in fast for that.

Those who booked for Barnsley will obviously be ready to travel when we know the date of the game. If, because of the timing, you are unable to make it,

please let me know early that you have to cancel, so I can offer your place to another potential traveller.

My appeal to more of you to become members of Luton Town Travel Club is given more emphasis by the subsequent pronouncement from the Football Association regarding penalties to be imposed on clubs as a result of unruly behaviour by their supporters.

So far, travellers on our official coaches have been good ambassadors for our football club, and will I know, continue to be. Our couriers are very keen to see our club expand in the right direction, and keep me up to date each week.

They are doing their best to encourage our travelling

supporters to become members of the travel club, and I feel it is becoming increasingly important in the light of official pronouncements, that as many of you as possible do join.

As the travel club continues to expand, it will also be a means of securing your seat, as priority would be given to members. Don't delay, get those application forms and photographs rolling in — £1 for adult, 50p for juveniles up to and including 15 years of age (give date of birth) plus two passport size photographs. Your membership cards will be sent by return.

A Happy New Year to you all.

Catherine Ball
Travel Organiser

Building houses to make homes in
at

Warden Hill, Luton
Parkside, Houghton Regis
Two Mile Ash, Milton Keynes
Church Green, Bletchley
Kimbolton Gardens, Bedford.



Barratt

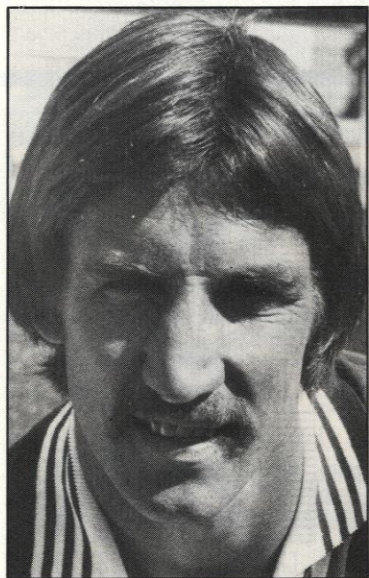
Telephone: Luton (0582) 422771

FLASHBACK

A look at Luton Town
a decade ago
By BRIAN SWAIN
Sports Editor, Luton News

Boobs, banners and breathalysers grabbed the headlines as another New Year dawned over Luton ten years ago — and for those of us who followed Luton Town there was cheering evidence that the club was getting on the right lines again for a serious promotion bid.

The early days of the 1971-72 season had been disastrous and relegation had seemed a major threat by November. But on 1st January 1972, Kenilworth Road housed its biggest gate of the season to see if the Town could keep up a run which had stretched seven games with out defeat.



Chris NICHOLL

Millwall, the only London club never to have played in the First Division at that time — they still are if you discount Wimbledon — brought a big following and 15,113 of us enjoyed one of the best matches of the season.

The Town clicked in every department, and Bryan King earned rave reviews for a series of stunning saves in the Millwall goal.

Peter Anderson, now the Millwall manager, destroyed their left flank and Gordon Hindson did the same on the other side. Barry Kitchener was run ragged by Vic Halom, and Millwall were lucky to be only two down at half-time. Headers by Chris Nicholl and Anderson brought the goals.

Millwall recovered slightly after the break, and pulled one back through Derek Possee, but the Luton fans went home highly delighted with what they had seen.

Some of us thought that Alec Stock was building a First Division side, and Millwall boss Benny Fenton went on record with the forecast that Luton could do it within a year or two.

He turned out to be right, although Harry Haslam was to be the man in charge when the 1973-74 season brought success.

To prove that the Football League administrators could come up with daft ideas now and again, the papers had great fun with an official request which went out to all clubs a

decade ago.

'Ban the banners' said the League, claiming that flags and poles could be dangerous and spoil the enjoyment of customers not armed with such devices. So far as I know not a single club lifted a finger to back the demand.

Another demand on the local scene also caused some amusement. A year earlier, a minor boss in a Vauxhall office had banned some of the calendars that some of his staff had pinned up. He wasn't to know that shapely breasts would soon become a regular feature in one or two of our best-selling newspapers from Fleet Street.

And the workers had the last laugh ten years ago this week — they pinned up an official Vauxhall calendar, designed to titillate, so to speak, dealers and mechanics in showrooms and garages. You can guess the two outstanding features in the picture for each month of 1972!

Elsewhere, the local papers were full of stories about policemen being worried because motorists were no longer frightened enough by the breath-test laws.

And in Dunstable Road, MPs and councillors were being dragged into a row which we never realised would be so important for Luton Town.

The local bureaucracy was trying to fend off protests and come up with a suitable line for a new road between Luton and Dunstable. I wonder if they'll still be at it ten years from now?

LUTON

Wallspan
Bedrooms
Showrooms throughout
London and Home Counties
SEE US IN
LUTON ARNDAL CENTRE ☎ 23015

SCORE
WITH
MATTERS
BINGO.

Wallspan
Bedrooms
FITTED BEDROOM FURNITURE
SEE US IN
Yellow Pages

With the weather and early printing deadlines causing us headaches we are not certain at the time of writing these notes whether we'd have played our special Christmas edition of Take Your Pick prior to our Boxing Day match with Cambridge.

If not, it will be all hands to the deck as over 30 contestants, winners from our Rotherham match will be invited on to the pitch to take part in our special bumper Christmas Take Your Pick game.

All contestants will receive a Luton Town souvenir. One happy contestant will walk, or should we say fly, away with our star prize of a £400 Holiday Voucher with Silvoir Holidays.

YOUR CHANCE TO WIN OVER £400 WORTH OF SLAZENGER GOLFING EQUIPMENT

The postponement of fixtures has, of course, meant a delay in the start of the Wallspan and Bernards World of Sport Target Golf competition. All supporters over the age of 14 are invited to have a go you don't need clubs as

everything is supplied by us.

We have prizes for weekly winners donated by Bernards World of Sport and each week's winner will go forward to a grand final later in the season for which we will offer over £400 worth of golfing equipment kindly donated by Slazenger.

To take part, apply now to Mary Bunyan, Luton Town Football Club, 70-72 Kenilworth Road, Luton. Telephone Luton 411622.

Meanwhile, with us now in 1982 we are now planning next season's entertainment and, with this in mind, we would like to hear from you. Any ideas or criticisms you can offer will be seriously considered.

It's only by hearing from you, our supporters that we can judge whether you appreciate and enjoy the effort we are making to give you a real day out at Luton Town. So please any ideas or even if it's just great, carry on the good work we want to know.

All letters please to Mike Beevor, Luton Town FC, 70-72 Kenilworth Road, Luton, Beds.

CROSSWORD

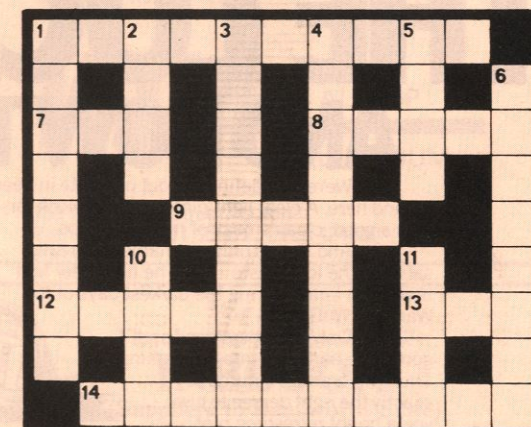
CLUES — Across

1. Former Spurs star who later managed Nottingham Forest and Derby (4, 6); 7. See 13 across; 8. His twenty-three goals helped Rotherham to their championship last season (5); 9. One of the Hibbitt brothers (5); 12. Cup stage (5); 13 & 7ac. Score by which Czechoslovakia beat East Germany to win the 1980 Olympic title (3-3); 14. Oldham remained thus longest in the League this season (10).

CLUES — Down

1. One of the Dundee grounds (4, 4); 2. See 11 down; 3. Chelsea manager between Stuart and Shellito (9); 4. Tom Finney is this club's most-capped player (9); 5. Famous old Celtic star Patsy Gallagher was nicknamed 'The Mighty — — —' (4); 6. Long-serving Torquay defender who later managed Swindon and Crystal Palace (4, 4); 10. Notts County's Test cricketer who played for Forest in 1881 . . . or his Forest namesake of 1981 (4); 11 & 2dn. Where John McGrath became manager after Alan Bloor (4, 4).

• Check your solutions with the answers on Statistics page.



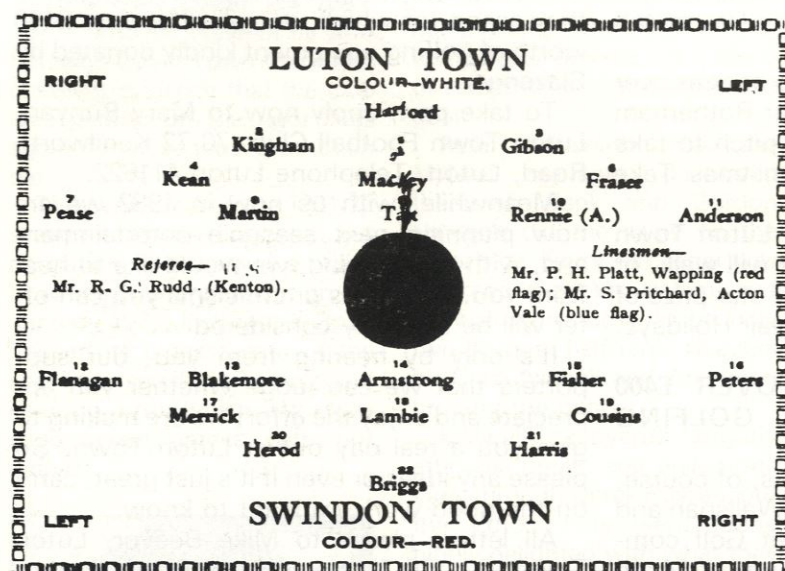
AROUND THE TOWN

FROM THE ARCHIVES

Secretary John Wilkinson has been looking through the Luton archives again and found this interesting example which should provide a little nostalgia for the Town's fans.

It is a copy of part of a programme from season 1933-34 and involved us in a game against today's opponents.

There's no doubt many of our older supporters will remember some of the names in our team.



DERBY PRICES

We have heard from Derby County who inform us that our travelling supporters will be charged £4 for admission to the Colombo Street terraces for our game at the Baseball Ground on 27th March.

PROGRAMMES WANTED

Our supporters turn up all over the world and our latest fan is Stig Forsingdal who lives in Luxembourg.

Stig is a Dane and specialises in European soccer programmes. His collection includes a programme of our match against the New Zealand World Cup squad when we were on tour a couple of years ago and is willing to exchange or sell them to Luton collectors who write to him.

A letter to Stig at 74 Rue d'Anvers, Luxembourg Ville,

Luxembourg, will bring you his copy of all the programmes he has available. Happy hunting.

EDITOR'S POSTBAG

While on the subject of letters, we receive many from people thanking the manager, players and club officials for helping them in various ways.

One supporter wrote to the manager thanking him for sending him an autographed team picture on the date of his girlfriend's 21st birthday.

Young Stephen Gray thanked us for allowing him to be a mascot at one of our recent away games. 'I realise how lucky we are to have such a great junior club at Luton,' he said. 'It is tremendous for us to have close contact with the players.'

We also helped Kevin Snoxhall who lives in Woburn Sands. Our executive director



RICKY HILL and MARK AIZLEWOOD
Scorers against QPR last September

John Smith assisted Kevin with information he wanted on Luton Town when he was working on business studies. With our help, Kevin passed his 'O' level.

FOLLOW THE ACTION

We have the opportunity to complete the double over QPR when they visit us a week today. We beat Rangers 2-1 at Loftus Road on 1st September when our goals were scored by Mark

Aizlewood and Ricky Hill. We are the only team to have won a Second Division match on the London club's controversial artificial pitch.

FA CUP DRAW

If we win today, details of admission prices, tickets, etc., will be published in the local Press before the fourth round of the FA Cup on 23rd January.

VIV'S ON THE MOVE

One of our former players, Viv Busby, could be on the move again after being given a free transfer by Blackburn Rovers. Viv has failed to make an appearance in their first team this season after collecting a nasty injury. He was a welcome visitor to Kenilworth Road recently when he took the opportunity of watching our game against Rotherham.

THE LOCAL TASTE AND HOW TO SATISFY IT

We're very definite about our taste in beer around here. A clear light pint is what we look for; with a good, clean smack of malt and hops.

And there's only one name that really satisfies the local taste - BB. The light beer first brewed in Luton during the darkest days of the War by J. W. Green.

Only the finest hops and good, ripe barley go into the making. Then the brew is matured to exactly the right degree to give you a bright refreshing pint with a sound, full flavour.



WHITBREAD

American servicemen in local wartime bases declared that BB, chilled, was the nearest taste to Stateside draught.

It went down well when Syd Owen ruled the Hatters.

And it's been going down well ever since. Because BB is brewed with a proper respect for quality. To keep up the traditions we value round here.



Your Local Tour Operator
Book now for your Summer Holiday
Brochures available from:
Silvoir Holidays Ltd
Silvoir House
13-15 King Street, Luton
Tel: 412131

For ALL your Window and Door requirements

WHA ALLSOP
ALUMINIUM

153 Newtown Street, Luton
Tel: Luton 20011/23472. Eves 424650

For all your
Floral arrangements contact:
INBLOOM
(Suppliers to Kenilworth Suite)
45 Latimer Road, Luton

TODAY'S MATCH SPONSOR

R. W. UNWIN & CO LTD

Pharmaceutical and Fine Chemicals

and

Chemical Intermediates



**PROSPECT PLACE
WELWYN
HERTS
AL6 9EW**

***Telephone:*
Welwyn (0438 71) 6441/2/3/4**

ODD HAPPENINGS

Clashes between players and referees have been far too frequent in recent years and, without wishing to take sides or apportion blame, it has been presumed that such clashes are symptomatic of an eroding of values in modern society whereby, on the one hand, authority is not always above reproach and, on the other, there is less respect for authority in general than was the case years ago.

Bookings and sendings off have, of course, increased dramatically particularly over the past 10 years, but it is worth remembering that the offences for which players can be booked or sent off have become far more numerous too.

In fact, it is only in the last two decades that bookings could of themselves earn a player a suspension. Previously they served only as a sort of final warning that recurrence of an offence would lead to a sending-off in that particular match.

They were not automatically totted up from game to game. The writer watched football regularly from 1944 onwards and it was seven years before he saw anyone sent off. In this time not more than half a dozen had been booked.

In short, serious foul play was virtually the only reason for a referee to take disciplinary action in the first 60 or 70 years of League Football.

Even so, then as now, a referee's failure to take action when action seemed justified did in itself lead to trouble. It certainly did so in a Second Division game between Port Vale and Chelsea played on 30th October 1906.

In goal for Chelsea was Willie Foulke, one of the most remarkable men to appear on a football field. Ten years earlier during his Sheffield United days he had played for England and was by this stage of his career all of 20 stone in weight.

In the course of this game at Port Vale, he was being goaded by a Port Vale forward who knew the big man's reputation for quickness of temper and who hoped that he might commit an offence that could lead to a penalty.

He gambled correctly though the nature of Foulke's offence might not have been so readily forecast. For when Willie's patience did eventually snap he lifted the offending forward into the air and hurled him unceremoniously into the back of the net.

The referee, a Mr J. T. Howcroft, one of the most famous of his day, promptly awarded a penalty, but there is no record of him taking any further action against either Foulke or the forward.

The big goalkeeper again acted unpredictably in that he made no attempt to save the penalty. Instead, he glared at the referee, who he saw as acting unfairly in not penalising the forward's niggling offences.

Maybe today such a literally 'glaring' offence might be interpreted as dissent and punished as such. Even if it did, however, it would not remove the dissatisfaction that is still felt when a referee punishes a retaliatory offence without spotting the initial cause.

COMPETITION CORNER

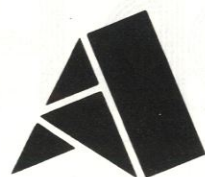


WIN TWO FREE TICKETS

There's two free tickets for our home game against Leicester City on January 30th waiting for the Luton supporter who can identify this Hatters player.

You may find it easy and if you think you know who it is, send your answer to John Wilkinson, Luton Town FC, Kenilworth Road, Luton, to reach us by next Saturday morning.

**The wheels for
British industry**
DAF Trucks



**American Can
(UK) Ltd**

**MANUFACTURERS
AND SUPPLIERS OF
HIGH QUALITY FOOD
AND DRINK CANS
THROUGHOUT THE
WORLD**

HENLYS 

first for

 **TALBOT-PEUGEOT** 

**Luton Way, Dunstable, Beds.
Telephone: 64171.**

**LUTON TOWN PLAYERS
DRINK**



MILK

**For your nearest depot
ring Luton 23580**

JOHN'S JOURNAL

This week, I would like to bring to the attention of all supporters who are interested in the statistics of players, not only of Luton Town but all other clubs, a book which has just been published.

The author, Barry Hugman, a Luton Town and Chelsea supporter by the way, tells me that he gave up waiting for someone to write soccer's equivalent of Wisden, the cricketers Bible. He thought he had better write one himself.

Now six years and thousands of hours later of spare time work, he has produced the book that he and many supporters have been waiting for. The 520 pages in the book give statistical details of all the 16,000 players who have played in the Football League since the last war.

Published by Rothmans it is titled The Football League Players Records, and is a complete A to Z from 1946-1981.

There are over 28,000 line entries of statistics and almost 400 individual biographies written by Barry together with photographs. The price of the book is £9.95 which I believe is good value especially for supporters interested in records.

An ideal belated Christmas gift perhaps. Barry is also hoping that the book might rekindle the real interest in soccer instead of the irresponsible behaviour shown by so many so called fans of today. The book lists every player who has pulled on a shirt for a Football League club and actually got on to the park.

Also included are the names,

birthplace, League club appearances and the position played. I imagine that Barry has a very understanding wife to have put in so many hours to write the book and also the many snags that he must have come across during his research must have been enormous.

As if that wasn't enough, I have heard that he is now working on a reference book of post war goalkeepers and rating them on the basis of goals scored against. Happy writing Barry, your readers are waiting.

**John Wilkinson
Secretary**



**ANGLIA
TELEVISION**

See the goals and the action every Sunday afternoon

**EVERY SUNDAY
MATCH
OF THE
WEEK
ON ANGLIA TELEVISION**



**ANGLIA
TELEVISION**

CENTURY CLUB

These notes are written in the hope we shall have watched a game once more. What a long time since we saw our team in action, and how frustrating for them to have had their superb winning rhythm interrupted. However, we hope everyone enjoyed a happy Christmas, and we all look forward to a good New Year.

Today, we welcome our visitors from Swindon Town, and anticipate a good game. The best of luck to our manager and players.

One thing we can report on is our Childrens' Christmas Party. This was

scheduled to take place on Friday 11th December, but the blizzard conditions caused the postponement until Monday 21st December. A very happy evening was spent by all the young people who came along — children of Century Club members, players and staff.

Plenty of games, music and food, and most important a visit from Father Christmas, who gave a present to each child. The mums and dads who came with their families, and stayed to watch, thoroughly enjoyed the Christmas spirit in the gaily decorated clubroom.

This was a first venture, and we thank most sincerely Neil Gambrell, John Charterley and Colin Ball for their help in making the evening go with a swing.

Please let us have your raffle counterfoils and money, and any prizes you may be donating. The draw will take place on Saturday 9th January, at our New Years Party. Tickets from Stuart and Catherine.

A Happy New Year to you all.

MATCH SPONSOR

We are delighted to welcome this afternoon's sponsors, R. W. Unwin and Company to Kenilworth Road.

Sponsors provide a vital source of revenue to Luton Town and we have never underestimated their importance. Inflation and the recession has hit soccer as hard as any other business and we are delighted that several local companies have, and will continue to, sponsor games at Kenilworth Road this season.

R. W. Unwin and Company is a private company, engaged in the

manufacture and distribution of fine pharmaceutical and chemical intermediates on a world-wide basis.

They export to most countries in the world and supply to all the major pharmaceutical houses in the United Kingdom. They represent a number of international manufacturing companies from Switzerland, Germany and Italy in the United Kingdom in addition to representing six leading Japanese pharmaceutical manufacturers.

Manufacture of steroid hormones is carried out from the company's modern plant in Portugal from where they are sold world-wide. The current main market is America where sales last year reached 20 million dollars.

The company's chairman, Ron Unwin, has been a member of the Luton Vice-Presidents Suite since it was formed.

SAVE OUR SOCCER

In my view, soccer statistics during the post-war boom period for entertainment in general, and football in particular, were not truly representative.

They reflected a need for that age in the aftermath of war, rationing and austerity.

People needed something in their lives to get away from the drabness and pessimism. Entertainment provided the outlet. Then came affluence and television.

The cinema in the thirties had a profound effect on variety and the theatre. The circle turned and we have witnessed the closure of hundreds of cinemas, their conversion to Bingo halls and three-in-one cinemas. TV has changed the habits.

When masses of people in the

Executive director John Smith has recently been looking at the problems related to our national game. It has made interesting reading and, today, he concludes his series.

forties and fifties were queuing to watch films and football, it was then that football failed to respond, they could not envisage changing circumstances and changing environment and therefore failed to notice the change until it was too late. The new audience was lost.

However, although many cinemas have gone and we have also lost many newspapers, football in many ways is a success story on survival.

No club has during this period, and whilst a member of the Football League, gone out of business.

Once a club has lost the status of the Football League, like Accrington Stanley, they have collapsed financially. Accrington rue the day that they allowed their club to go, Accrington is now a forgotten outpost, rarely mentioned anywhere.

Look how football has adapted to the financial change. The majority of clubs have made up the balance lost on gate income by promoting a vigorous commercial plan, which now in most cases represents nearly half the income. There are not too many businesses which have been able to successfully

diversify in this way.

Whilst transfer fees have created a bad public image because of the amounts involved, they have in many ways only kept pace with inflation and of course, supply and demand. For example:

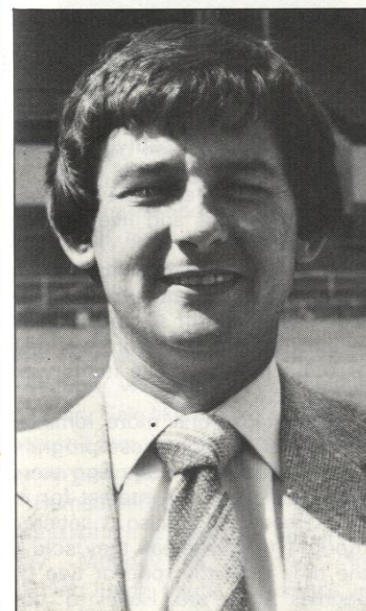
1905 (£1,000) Alf Common, Sunderland to Middlesbrough.
1928 (£10,000) David Jack, Bolton to Arsenal.
1962 (£100,000) Denis Law, Torino to Manchester United.
1970 (£200,000) Martin Peters, West Ham to Spurs.
1977 (£500,000) Kevin Keegan, Liverpool to Hamburg.
1979 (£1,000,000) Trevor Francis, Birmingham to Nottingham Forest.

Clubs, rather than pay tax, convert their profits into players. This money then percolates through football, resuscitating those clubs in need. Most of the money stays in the game.

It is only when players are purchased from abroad that the money is lost to the Football League clubs. Therefore, is the move towards purchasing foreign players a contributory factor in the declining activity in our transfer market and one of the reasons for the current financial difficulties in many clubs?

For instance, of the reported transfers during the period June 1980 to May 1981, a nett figure of £2,500,000 was paid out by the Football League to Europe and Scotland. Scotland represented a nett profit to them of £730,000; had that £2½ million stayed in the League, then of course this would have assisted the many clubs now in need of selling to exist.

JOHN SMITH



PROGRAMME CORNER

By JOHN FARMER

The last season of wartime football — 1945-46 — was an unusual one in that although peace had returned on the previous May and the FA Cup was again being competed for, the League programme was another emergency one with First and Second Division clubs competing in two regional Leagues labelled North and South.

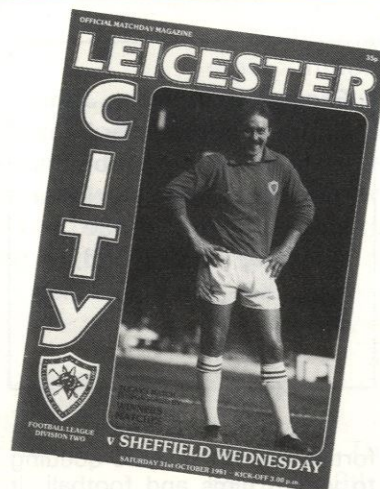
This state of 'in between' was also reflected in the programmes of the time.



With paper still limited, programmes were mainly of the single sheet variety with some clubs printing front and back of a sheet slightly smaller than the current A4 size and others folding the sheet over to form four smaller pages.

During the previous wartime seasons programmes had been limited almost solely to teamsheets with perhaps the club's fixtures and an odd advertisement, several clubs now introduced a few topical notes.

We, in fact, opted to use the single sheet large page size and, though line-ups, fixtures and forthcoming matches were attractively laid out on the front, the back was limited to a large advertisement for a local ale.



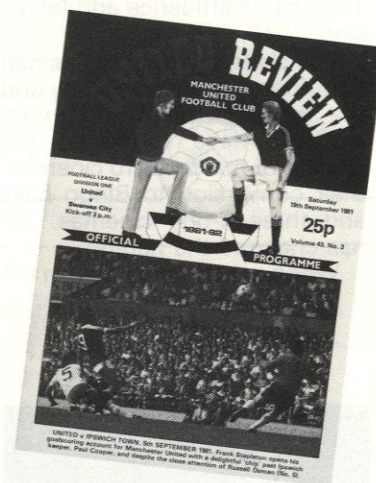
The team was now coming back to something like 'normal' compared with the large number of 'guests' used for wartime games and in the following line-up for a game against Wolves on December 15th 1945 our older fans will readily recognise two of our stalwarts of the immediate postwar era, defender Horace Gager and striker Hugh Billington. Duke, Beech, Cooke, Campbell, Gager, Gardiner, Isaacs, Batty, Billington, Vinall, Edwards.

In fact it was Billington who scored the only goal of this particular game that was watched by



our first 10,000 gate of the season. According to the Wolves programme of the following week our goalkeeper was busier than his Wolves counterpart and Billy Wright, who was playing as a striker in those days, beat him on one occasion with a shot that came back off a post.

All of which reminds us that Wolves, using a similar paper size for their programme made it into a 4-page fold-over with notes. These



read extremely sadly, making reference to the fact that in the war years we had no fewer than 30 of our players overseas and five of them were killed.

An unusual feature to modern eyes is a list of records to be played before the kick-off and at half-time — a throwback to the pre-war days of brass bands whose items were published in advance.

This is just one more reminder that, small though those programmes of nearly 40 years ago were, they hold plenty of interest for today's reader. It is also a sobering thought that whereas they sold at the time for either one or two old pennies they are likely to cost anything up to £5 in the second hand market.

The crest of Luton Town Football Club is displayed. It features a stylized white hat with a black band that reads "LUTON TOWN F.C." in white capital letters. Behind the hat is a black silhouette of an airplane flying upwards and to the right. The entire crest is set against a white background.

SHOP WINDOW



We had a splendid sale of souvenirs during the pre-Christmas period. Wendy and her staff were able to supply almost every gift which our supporters wished to purchase, or at the very least a compromise, and who knows, perhaps the alternative gift was even more acceptable.

As we keep saying, our stocks are very comprehensive, and although we are not holding a January Sale like the big stores, we can still provide you with souvenirs at very competitive prices.

Remember, the pools office cum ticket office is open all day every day, Monday to Saturday, including lunch hours. Please try us. You will be amazed at what goods we have to offer you.

TICKET OFFICE

Since we have taken over this operation and not because of the move, we have not only been pleased to serve you — but — we have had numerous enquiries for season tickets of every variety.

We accept this is because the team is doing so well on the park, and our supporters realise that we are bound for Division One feeling quite naturally, that in Division One, prime season tickets next season will be at a premium.

So, if you want to jump on the bandwagon this is the deal until the season ends.

Main stand, Wing or Bobbers seats are being sold-off at £25 each, you can stake your claim now

avoiding the hassle and lengthy queues which will result from the team's further successes yet to come.

Remember that we are open all hours, so take advantage of this offer which will NOT be repeated, even though the cup ticket entitlement is not included for this season. Please make enquiries at the office as soon as possible. We shall be, as always, pleased to serve you, souvenirs, season tickets, new lottery agents. You name it, we can do.

Together, let's make this a really memorable 1982.

MIKE HARDWICKE
Commercial Manager

NEWS PICTURE...



Snow, ice and frost? The recent terrible Arctic weather conditions seem a million miles away and Wayne Turner, Kirk Stephens and Ricky Hill relax on the way home from an away game earlier in the season. It was one of those hot evenings where fashion was nowhere to be seen. This picture reminds us that summer really does exist in England.

VISITORS

SWINDON TOWN

THE CLUB...

We well remember Swindon Town's last visit to Kenilworth Road two years ago when they dumped us out of the FA Cup. It's a result we don't want repeated today.

Swindon lasted only two rounds last season after beating non-League Weymouth 3-2 at home before going out 2-0 to Wimbledon at Plough Lane. But the Cup has provided Swindon with two records.

A total of 32,000 fans packed into the County Ground in January 1972 to watch the game against Arsenal. The club's receipts record was established in 1980 when over £56,000 was received for the visit of Spurs in the fourth round.

... THE PLAYERS

Steve Abbley, a forward, was born in Liverpool. Signed from local football in season 1978-79 a winger whose opportunities have been limited in the first team. He made his debut at Exeter City in April 1980 and had made four full League appearances at the end of last season.

Jim Allan is an experienced goalkeeper who has been with Swindon since signing from Scottish junior football in 1970. He made his debut against QPR in September 1971 and has been the regular first team keeper for several seasons. Had made 272 League appearances at the end of last season.

Kevin Baddeley is a young defender who served his apprenticeship with Bristol City and made his League debut for that club last season. He was unable to claim a regular first team place and moved to Swindon in the 1981 close season.

Ken Beamish, joined Swindon in July 1981 as player/coach. He began his career with Tranmere Rovers making 175 League ap-

pearances before moving on to Brighton (86 games), Blackburn Rovers (86 games), Port Vale (84 games), Bury (49 games) and finally back to Tranmere Rovers. A consistent goalscorer wherever he has played.

Midfielder **Roy Carter**, played Western League football with Falmouth before joining Hereford United in the summer of 1975. He made 64 League appearances there and was a member of the Third Division Championship side in 1976. He signed for Swindon in December 1977 making his debut against Carlisle that month.

Gary Emmanuel, began his career with Birmingham City making his League debut in January 1975 and playing in 61 First Division matches before his transfer to Bristol Rovers in December 1978. He made a similar number of League appearances for Rovers and joined Swindon in July 1981.

Defender **Mike Graham** started his career with Bolton Wanderers and played his first full League game in September 1978. His chances were limited at Bolton but he made about 30 League appearances mostly at full back before moving to Swindon in July 1981.

Roy Greenwood's first club was Hull City where he broke into the first team in 1971. He made 118 League appearances for Hull and moved to Sunderland in January 1976 in time to help them win the Second Division. After 45 League games there he moved to Derby County in February 1979 and made a further 20 League appearances before moving to Swindon in March 1980.

Charlie Henry joined the club from school as an apprentice signing full professional forms in February 1980. Although his first team debut was at centre forward in a League Cup



game at Lincoln City in September 1980 he is normally a defender and quickly settled into the right back position where his determined play made him popular with the supporters. He made 31 League appearances last season.

Brian Hughes, served his apprenticeship with Swindon and made his first team debut at Lincoln City in a League Cup-tie in August 1980 only a few months after signing professional. He usually takes up the central position in midfield and made 18 League appearances last season.

Russell Lewis was spotted playing part-time football in the Welsh League, and signed for Swindon in September 1976, making his League debut against York City in April 1977. He had to spend several seasons as reserve centre half but in August 1979 had the opportunity to play at full back which gave him the right back position for the rest of that season. Last season he reverted to centre half and was voted Player of the Year.

David Peach, is the most experienced player in the squad. He began his career with Gillingham, making his League debut in September 1969. After 186 League appearances he moved to Southampton for whom he made 220 more such appearances. Whilst there he won an FA Cup winners medal, scored in a League Cup Final, won representative honours for the Football League and as an over-age player in the England Under-21 side.

LINE-UP

Howard Pritchard began with Bristol City, working his way through the junior sides to make his League debut in August 1978. He made only one appearance that season but began to appear fairly regularly over the next two seasons mainly as an orthodox winger. He made around 40 League appearances for City and signed for Swindon in August 1981.

Andy Rowland, was an apprentice with Derby but his League debut came after a transfer to Bury in the summer of 1974. He was three times leading scorer and made 169 League appearances before his move to Swindon in September 1978. He made his debut for the club against Blackpool that month and has been

a consistent goalscorer throughout the 114 League games that he had played for the club up to the end of last season.

Ken Stroud served his apprenticeship with Swindon, signing professional forms in 1970 and is now the longest serving player with the club. He made his debut against QPR in September 1971 and had made 272 League appearances at the end of last season. Much of his early career was spent in midfield but he is now established as a central defender.

... AND THE MANAGER

John Trollope joined the club as an apprentice and made his debut in 1960 against Halifax Town. He

played in the promotion-winning teams of 1963 and 1969 and at one stage played in 368 consecutive first team games. The height of his playing career came when he played in the side that beat Arsenal in the 1969 League Cup Final. In March 1978 he made his 832nd first team appearance (727 in the League) and retired to become the club's youth manager. He was however, recalled to first team duty later that season and in the following season. It seemed that a game at Blackpool in May 1979 would be his last but another recall in September 1980 saw him make a new appearance record for a single club of 770 League games. If cup games are included he has played 878 matches for the club.

Back row (left to right): Brian Hughes, Jimmy Allan, David Round, Mark Stevens, Kevin Baddeley. Middle row: Chris Kamara (now with Brentford), Roy Greenwood, Charlie Henry, Gary Emmanuel, Mike Graham, Roy Carter. Front row: Dave Peach (Captain), Andy Rowland, Steve Abbley, Craig Moores, Paul Rideout, Kenny Stroud, Howard Pritchard, Russell Lewis, Martin Blackler.



POINTS ATTENDANCES STATISTICS LEAGUE TABLES

Opponents	Result	Attendance	Points	Position	Findlay	Stephens	Aizlewood	Horton	Saxby	Donaghy	Hill	Stein	White	Antic	Ingram	Turner	Moss	Fucillo	Goodyear	Small	Aleksic	Judge	Own Goal
Goals Scored							3	1	6	2	6	14	2				8	1	1				1
1981																							
August																							
29 Charlton Athletic	3-0	8,776	3	1	2	3	4	5	6	7	8	9	10	11									OG
September																							
1 Queens Park Rangers	2-1	18,703	6	1	2	3	4	5	6	7	8	9	10	11									
5 Bolton Wanderers	2-1	6,911	9	1	2	3	4	5	6	7	8	9	10	11									
12 Sheffield Wednesday	0-3	12,131	9	3	1	2	3	4	5	6	7	8	9	10		11							
19 Leicester City	2-1	14,159	12	2	1	2	3	4	5	6	7	8	9	10									
22 Cardiff City	2-3	9,015	12	4	1	2	3	4	5	6	7	8	9	10									
26 Watford	4-1	12,839	15	2	1	2	3	4	5	6	7	8	9	10									
October																							
3 Orient	3-0	5,584	18	1	1	2	3	4	5	6	7	8	9	10									
6 Wrexham (LC2 - 1L)	0-2	6,146	—	1	2	12	4	5	6	7	8	9	10	11									
10 Oldham Athletic	1-1	8,403	19	1	1	2	3	4	5	6	7	8	9	10									
17 Grimsby Town	6-0	9,090	22	1	1	2	3	4	5	6	7	8	9	10									
24 Wrexham	2-0	4,069	25	1	1	2	—	4	5	6	7	9	8	10									
28 Wrexham LC2 - 2L	1-0	3,453	—	1	2	—	4	5	6	7	8	9	10	12									
31 Crystal Palace	1-0	11,712	28	1	1	2	—	4	5	6	7	8	9	12									
November																							
7 Derby County	3-2	10,784	31	1	1	2	5	4	—	6	7	8	9	—									
14 Blackburn Rovers	1-0	9,862	34	1	—	2	5	4	—	6	7	8	9	—									
21 Newcastle United	2-3	21,031	34	1	—	2	5	4	—	6	7	8	9	—									
24 Bolton Wanderers	2-0	8,889	37	1	—	2	3	4	—	6	7	8	9	12									
28 Rotherham United	3-1	11,061	40	1	—	2	3	4	—	6	7	8	9	12									
December																							
5 Shrewsbury Town	2-2	5,259	41	1	—	2	3	4	—	6	7	8	9	12									
28 Norwich City	3-1	19,348	44	1	1	2	3	4	—	6	7	8	9	12									
1982																							
January																							
2 Swindon Town FAC 3																							
9 Queens Park Rangers																							
16 Charlton Athletic																							
23 FA Cup 4																							
30 Leicester City																							
February																							
6 Sheffield Wednesday																							
13 Orient (5)																							
20 Watford																							
23 Cambridge United																							
27 Oldham Athletic																							
March																							
6 Grimsby Town (6)																							
12 Wrexham (LCF) (Friday)																							
20 Crystal Palace																							
23 Chelsea																							
27 Derby County																							
April																							
3 Blackburn Rovers (SF)																							
9																							
10 Cambridge United																							
12 Norwich City																							
13																							
17 Newcastle United																							
24 Rotherham United																							
30 Shrewsbury Town																							
May																							
5 Cardiff City																							
8 Chelsea																							
15 Barnsley																							
22 FA Cup Final																							
To be arranged																							
Barnsley																							

TODAY'S SCORECHECK

FA CUP 3rd ROUND

Barnet v Brighton
Birmingham v Ipswich
Bolton v Derby County
Coventry v Sheffield Wed.
Doncaster v Cambridge
Enfield v Crystal Palace
Leicester v Southampton
Manchester City v Cardiff
Notts County v Aston Villa

Orient v Charlton
QPR v Middlesbrough
Rotherham v Sunderland
Stoke v Norwich
Swansea v Liverpool
Tottenham v Arsenal
Watford v Manchester Utd.
West Brom v Blackburn
West Ham v Everton
Wolves v Leeds Utd.

MIDLAND YOUTH LEAGUE									
Wolves	3	3	0	0	10	3	6		
Luton Town	3	2	0	1	8	4	4		
W.B.A.	2	1	1	0	1	0	3		
Bristol City	3	1	1	1	3	4	3		
Birmingham	2	1	0	1	4	2	2		
Peterborough	3	1	0	2	6	5	2		
Coventry	1	0	1	0	1	1	1		
Leicester City	2	0	1	1	1	4	1		
Swindon	1	0	0	1	2	6	0		
Northampton	2	0	0	2	2	9	0		

+ Player replaced by substitute

● Goalscorer

FOOTBALL COMBINATION FIXTURES 1981-82

F A

Aug. 29	Orient	4-0
Sept. 1	Tottenham Hotspur	1-0
Sept. 5	Oxford United	2-1
Sept. 12	Leicester City	1-1
Sept. 19	Queens Park Rangers	2-0
Sept. 26	Watford	0-5
Oct. 3	Bristol City	1-1
Oct. 10	Crystal Palace	4-0
Oct. 17	Swindon Town	0-3
Oct. 24	Ipswich Town	2-3
Nov. 3	Hereford United	1-0
Nov. 7	Arsenal	1-1
Nov. 10	Norwich City	1-3
Nov. 14	Fulham	2-2
Nov. 17	Birmingham City	1-1
Nov. 25	Tottenham Hotspur	1-2
Nov. 28	Southampton	3-5
Dec. 5	Chelsea	2-1
Jan. 2		
Jan. 9	Oxford United	
Jan. 11		
Jan. 16	Orient	
Jan. 23		
Jan. 30	Queens Park Rangers	
Feb. 1		
Feb. 6	Leicester City	
Feb. 8		
Feb. 13	Bristol City	
Feb. 20	Watford	
Feb. 27	Crystal Palace	
Mar. 6	Swindon Town	
Mar. 13	Ipswich Town	
Mar. 20	Plymouth Argyle	
Mar. 27	Arsenal	
Apr. 3	Fulham	
Apr. 10	Birmingham City	
Apr. 12	Reading	
Apr. 17	Hereford United	
Apr. 24	Southampton	
Apr. 27	Chelsea	
May 4	Norwich City	
May 8	West Ham United	
May 15	Bristol Rovers	
May 22		
To be arranged		
Plymouth Argyle (A)		
West Ham United (A)		
Bristol Rovers (H)		
Reading (H)		

DIVISION TWO TABLE 1981-82

	Home										Away										Pts
	P	W	D	L	F	A	W	D	L	F	A	P	W	D	L	F	A	W	D	L	
Luton Town	19	7	0	2	24	10	7	2	1	20	10	44									
Oldham Athletic	21	6	5	0	19	9	4	2	4	13	14	37									
Watford	18	5	3	1	16	8	5	1	3	12	12	34									
Q.P.R.	20	7	2	2	15	5	3	1	5	12	14	33									
Chelsea	20	5	3	2	16	12	4	2	4	12	15	32									
Blackburn Rovers	21	5	2	3	11	5	3	5	3	14	15	31									
Barnsley	19	7	1	1	17	4	2	2	6	13	17	30									
Sheffield Wednesday	18	5	2	2	14	12	4	1	4	8	10	30									
Leicester City	19	3	4	2	10	7	3	4	3	15	13	26									
Charlton Athletic	20	6	0	3	19	13	1	4	6	9	20	25									

TODAYS TEAM CHECK

LUTON TOWN		SWINDON TOWN	
JAKE FINDLAY	1	JIMMY ALLAN	
KIRK STEPHENS	2	KEVIN BADDELEY	
MARK AIZLEWOOD	3	GARY WILLIAMS	
BRIAN HORTON	4	BRIAN HUGHES	
CLIVE GOODYEAR	5	RUSSELL LEWIS	
MAL DONAGHY	6	KENNY STROUD	
RADDY ANTIC	7	GARY EMMANUEL	
BRIAN STEIN	8	ROY CARTER	
STEVE WHITE	9	ANDY ROWLAND	
LIL FUCCILLO	10	PAUL RIDEOUT	
DAVID MOSS	11	HOWARD PRITCHARD	
	12		

Referee: A. W. GREY, Gorleston-on-Sea

Linesmen: P. PITTAWAY (Red Flag)

D. WRAGG (Yellow Flag)



TOKEN

12

Saturday
2nd January 1982
SWINDON TOWN



IN CHARGE TODAY

GREY, ALFRED W. (Great Yarmouth). Commenced refereeing in Norfolk in 1960 and via the Football Combination qualified for the Football League full list in 1972. Was an FA Cup final, European Cup semi-final linesman and an FA Amateur Cup official in 1972. Refereed the FA Youth Cup Final in 1977 and the FA Trophy Final in 1978. Appointed to the FIFA panel in 1977. A married man, with two sons, he is Production Superintendent for a frozen food company. His interests are gardening, tennis, cricket and collecting coins, and he is a chorister in his local parish church.