

# THE HATTER

**Official Matchday Magazine Price 50p**

**FOOTBALL LEAGUE DIVISION TWO**

**Saturday 28th November 1981**

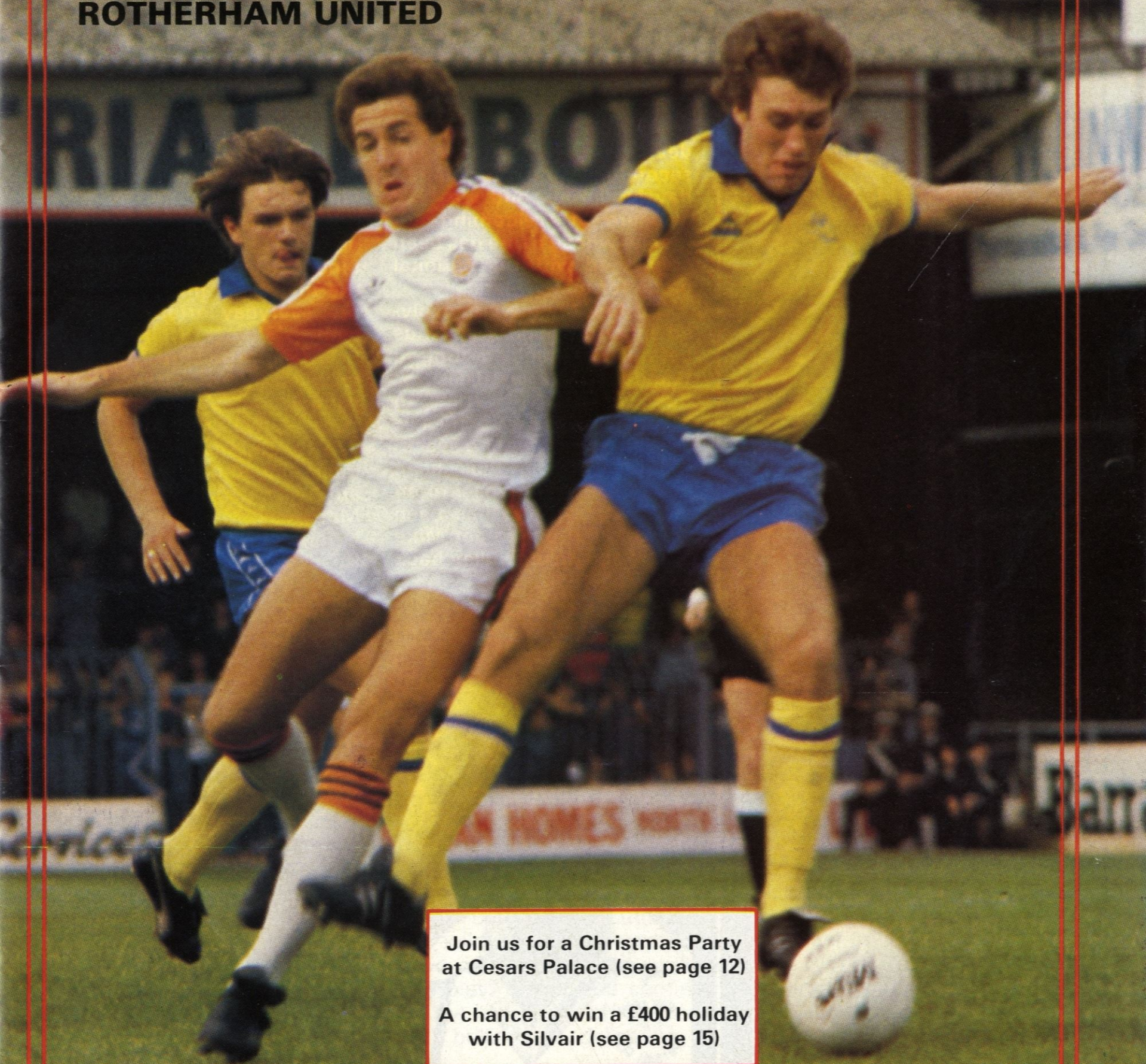
Kick-off 3.00 p.m.

**LUTON TOWN v  
ROTHERHAM UNITED**

**TODAY'S MATCH**

**IS SPONSORED BY:**

**CLEANDUSTRIAL SERVICES LTD**



Join us for a Christmas Party  
at Cesars Palace (see page 12)

A chance to win a £400 holiday  
with Silvair (see page 15)



## LUTON TOWN FC



70-72 Kenilworth Road

Luton

Tel: 411622

Season 1981-82

### Chairman:

Denis Mortimer

### Directors:

R. L. Banks, D. J. Evans  
E. S. Pearson, H. Richardson  
R. J. Smith, J. R. Yates  
J. R. Smith (Chief Executive)  
D. J. Pleat (Team Manager)

### President:

T. Hodgson

### Vice-Presidents:

J. A. C. Bain (Deputy President)  
Lord Hill, Sir Reginald Pearson OBE,  
A. J. Berry, J. B. Brent,  
B. Cole, B. England,  
N. S. Fookes, G. B. Holland,  
C. Holloway, I. E. Holmes,  
C. J. Hudson, R. Larkinson,  
L. Leppington,  
Eric Morecambe OBE, R. Safranek,  
E. Waller, R. Unwin

### Administration:

General Secretary:  
Graham MacKrell

Club Secretary:  
John Wilkinson

Project and Advertising Manager:  
Mike Beevor

Commercial Manager:  
Mike Hardwicke

Catering Manager:  
Clive Hustwitt

Youth Development Officer:  
Colin Ball

Travel Organiser:  
Mrs C. Ball

Auditors:  
Arthur, Young, McClelland,  
Moore & Co.

Photographer:  
Gareth Owen

### Playing:

#### Coaches:

David Coates, John Moore and  
Trevor Hartley

Physiotherapist:  
John Sheridan

#### Doctor:

W. A. C. Berry MBBS

# MATCH PREVIEW

Saturday afternoon, and another chance for Luton Town to give the fans an exciting Second Division game.

This afternoon, we welcome Rotherham United — newly promoted from Division Three — and their manager Emlyn Hughes. His illustrious career is fully described on the pages devoted to our visitors in the second-half of your match-day magazine, and we take pleasure in welcoming someone whose name has been connected with our national game for many years.

Our first team were involved in two hectic weekends before we tackled Bolton Wanderers here last Tuesday. Successive away trips to Blackburn and Newcastle left us with little breathing space.

John Sheridan has been one of the busiest backroom men recently and has been working flat out to get Mike Saxby and Jake Findlay back to match peak.

### MIKE SAXBY



Our travel section still reports huge support for awayday travel and coaches have been booked for our away match at Shrewsbury a week today. Fancy going? Turn to page 13 for further details.

If you want to keep abreast of what's happening behind the scenes at Kenilworth Road, turn to pages 16 and 17 NOW for all the details of Luton in Around the Town.

While talking of those pages, we like to think our fans take an active interest in the matchday magazine and the everyday affairs of the club.

The magazine editor received many letters from supporters, some offering constructive criticism. Some letters are reproduced in the magazine and, if you have any comment, write to: The Matchday Magazine Editor, Luton Town FC, Kenilworth Road, Luton. We would be pleased to hear from you.

There's plenty of reading in today's issue. For example, the latest news and views on the Junior Hatters Club can be found on pages 10 and 11.

The big Spotlight picture Appears on page 8 with Flashback — a nostalgic look at the Hatters a few years ago — on page 14. And all the action pictures from last week's match at Newcastle are on pages 26 and 27.

Finally, don't forget our next home Second Division game two weeks today when Chelsea make the short trip from London to provide our opposition. Enjoy your magazine, see you in two weeks time.



# PERSONALITY PROFILE



## One fan's personal view of some of the great names of Luton Town.

By BRIAN SWAIN

It was a perfect moment for nostalgia a couple of weeks ago when I went to Blackburn to see Luton Town keep their proud place at the top of the Second Division.

Sitting in the stand was a silver-haired soccer genius of yesteryear, still respected everywhere football is played, and a man with a particular interest in the Blackburn v Luton fixture.

### BILLY BINGHAM



Billy Bingham was there to watch Mal Donaghy and Noel Brotherston, doing his duty as manager of Northern Ireland. And if he is half as good as a manager as he was as a player, he can't fail.

For Bingham, 20 years ago, was perhaps the finest right-winger I have ever seen in a Luton Town shirt, and it was more than appropriate that he should be at Ewood Park a fortnight ago — David Moss's winner from the penalty spot was the Town's first goal on that ground since one by Bingham when the clubs met in a First Division fixture in 1959.

As a teenage Luton Town fanatic in the late fifties I remember feeling elated when news broke that Sunderland had allowed Bingham to join Luton Town for £15,000.

That was in the summer of 1958, and Bingham came to Kenilworth Road with the record of never having missed a single cap since getting into the Northern Ireland team six years previously.

Strangely, Luton had spotted him playing for Glentoran, and had tried to sign him when he was 18. Not surprisingly, perhaps, he decided instead to go to Roker Park, to join a club which had been tagged 'The Bank of England' team a few years before.

We had heard and read a lot about Bingham in Luton, and our wildest dreams seemed to have come true when we saw him play. Tricky and confident on the ball, quick off the mark, and brilliant at delivering ac-

curate cross-field passes, he must have been the best right-winger in Britain in those days.

He could take goals as well as make them, and scored the one that must rank as the most important single goal in Luton Town's post-war history — the winner against Norwich in the FA Cup semi-final replay at Birmingham.

The memories of Luton Town and Billy Bingham for the few months after that are not quite so happy. He played in the team which lost at Wembley. Within a year, when the Hatters were relegated, he left to join Everton.

Luton took two players in exchange. With no disrespect to them, I felt at the time that the fans had been sold short — we had lost a brilliant player and taken a couple of ordinary ones in his place.

It didn't look very ambitious to those of us standing on the Kenilworth Road terraces, and our fears were confirmed as the club slumped through the Second and Third Divisions to the Fourth.

We still enjoyed watching our favourite team, of course, but considering he was at Kenilworth Road for only a short time Billy Bingham left a very deep impression with a lot of supporters.

And he's since made a little bit of history — the first Luton Town player to become a manager in charge of a team in the World Cup finals. Here's hoping Mal Donaghy and Co pick up a medal in Spain next year.



# DAVID'S DIARY

I hope the significance of the early season progress will not be lost on our supporters and you will all continue to shout us to vital wins as we look to capitalise on our opening.

England's qualification has given us all a considerable boost, and I am delighted that Ron Greenwood has got his reward for his dedication. The attitude of some amongst the media has been disturbing to say the least. A manager of an international team cannot conjure world class players out of a hat — we either have them, or not, and I believe that at the moment we are short. Consequently, we see extravagant claims by managers galore pressing their players' claims for recognition. I have never changed my view that we have players who Ron should have a close look at — for in time they will certainly impose their qualities, particularly if we get into the First Division.

The recent injury situation has been unfortunate. The two big men are both working exceptionally hard under John Sheridan's careful eye, but we will not jeopardise the team's chances by rushing them before they are fully fit. Mal Donaghy deserves all our congratulations and best wishes with his Irish colleagues for making Spain.

During the last month a talented player from Finland, Ari Valvee, has been having a trial with us. It looks as though we shall not sign Ari. The international winger needs at least a season to adjust, and I shall be looking for more immediate progress from wingers such as Ray Brammer and Paul Keys. Paul Keys hit a fine hat-trick against Swindon last Thursday and Ray Brammer looked like John

Robertson's double as he tantalised the opposition defence.

I was disappointed to learn that this season Hatter Fives' tournament will not be held on our patch owing to difficulties with British Rail. As a consequence Mike Iacano will organise the competition from the Lewsey Park area and I am delighted that a record 93 teams have entered. The Final takes place on 31st March and Mike Iacano is to be congratulated on his organising of this event.

On Monday our Youth Cup side travel to Charlton and the First XI have a friendly at Eynesbury.

Meanwhile, I hope we see an exciting game of football today against a team establishing themselves in the Second Division. Last year's backing of their ambitious chairman proved decisive. The buying of Moore, Seasman and Towner was vital in their season as Champions and I wish Emlyn Hughes every success in his career as manager.

DAVID PLEAT



The time is 2.30 p.m. and the players have begun to change into their strip in the dressing rooms. Supporters are beginning to get ready for the pre-match entertainment before the start of the game. But there's also a very important job to do behind the scenes in the referee's changing room. Both managers are required to hand their teams to the official and our cameraman caught David Pleat and physio John Sheridan giving the Town's team to the man in the middle.

OUR  
CLOTHES



IVOR HOLMES



LUTON 56622

## R. W. UNWIN & CO LTD

Pharmaceutical and Fine Chemicals  
and  
Chemical Intermediates

Prospect Place  
Welwyn, Herts  
AL6 9EW  
Tel: Welwyn 6441/2/3/4

## GRAHAM FORD LTD

TRADING AS  
LOCKHART BENNETT

*Comprehensive Builders Merchants  
For Home and Garden*

Depots:

Luton — Kingsway 31199  
Dunstable — Beale Street 603111  
Leighton Buzzard — Leighton Road 373486

## Willis-Dawson Ltd

Builders and Developers  
Leighton Buzzard

Tel: Leighton Buzzard 372557

See how far your money goes when you travel with

## TRAVEL CENTRE

Come in and get the best deal going  
47 GEORGE STREET, LUTON  
Tel: 421751

15a HIGH STREET NORTH, DUNSTABLE  
Tel: 609677

## J. F. MEADE LTD

Civil Engineering  
Building Contractors  
Plant Hire

14 Tennyson Road  
Luton, Beds  
Tel: 0582 287401/414759



*Your Discount Choice*

## LUTON SPORTS PRESS LTD

THE LOTTERY TICKET SPECIALIST  
Tel: Luton 28757

Discounts on all Tyres and Exhausts  
at



Manor Road, Luton. Tel: 410410  
122-124 Leagrave Road, Luton. Tel: 37835  
162-170 High Street South, Dunstable. Tel: 69913

## Cleandustrial Services Ltd

The Professional Approach to  
Your Cleaning Problems  
84 Aldermans Hill N13



# IN FOCUS



Our recent game against Derby County at Kenilworth Road not only provided us with a fine victory, but also gave us the opportunity to introduce our Junior Hatters to their counterparts, the Junior Rams. The youngsters had a splendid afternoon — as our picture shows — and we feel proud that we are going a long way to fostering good relations at youth level.

## MEMBERS OF THE

## KENILWORTH SUITE

BARRATT DEVELOPMENTS  
(LUTON) LTD  
PO BOX 5, BARRATT HOUSE  
LUTON L42 7XJ  
TEL: LUTON 422771

A. G. BERRY ESQ.  
BRENGREEN HOLDINGS LTD  
61 CHEAPSIDE, LONDON EC2V 6AX  
TEL: 01-248 6026

AMERICAN-CAN (UK) LTD  
WALTON ROAD, CALDECOTTE  
BOW BRICKHILL  
MILTON KEYNES MK7 8AE

B. COLE ESQ.  
CLEANDUSTRIAL SERVICES LTD  
PALMERS GREEN, LONDON N13  
TEL: 01-882 4626

FILMERGRAPHIC ASSOCIATES  
PHOTOTYPESETTING AND PRINTING  
BAINSON HOUSE, ALTON ROAD  
LUTON  
TEL: LUTON 36407

FINE STAMPS LTD  
BILTON WAY, LUTON  
TEL: LUTON 36761

N. S. FOOKES ESQ.  
N. S. FOOKES, ENGINEERING  
SERVICES LTD  
45 LATIMER ROAD, LUTON  
TEL: LUTON 26139

MR E. FOUNTAIN  
VAUXHALL MOTORS  
LUTON

S. GOLBY, FREDK RAY LTD  
STANBRIDGE ROAD  
LEIGHTON BUZZARD  
TEL: 372241

BRIAN E. HANDSCOMBE  
(LIFE AND PENSIONS BROKER)  
48 ALMA STREET, LUTON LU1 2PL  
TEL: LUTON 425921/4

G. B. HOLLAND ESQ.  
G. B. HOLLAND & CO. LTD  
MOTHERWELL WAY, LONDON ROAD  
WEST THURROCK, ESSEX

MR I. E. HOLMES  
IVOR HOMES LTD  
82-88 MARSH ROAD, LUTON  
TEL: LUTON 56622

C. J. HUDSON ESQ.  
E. W. HOLDINGS LTD  
6 UNION ST., LUTON  
TEL: LUTON 30511

RICHARD C. LARKINSON  
(BALDOCK) LTD  
TWENTY PENCE ROAD  
COTTENHAM, CAMBS.

P. LAYCOCK, LUTON SPORTS PRESS  
HAZELBURY CRESCENT, LUTON  
TEL: LUTON 28757

MARK JAMES (SALVAGE) LTD  
16 WEST STREET, DUNSTABLE  
TEL: DUNSTABLE 605944

MARSHALLS OF LUTON  
(BUILDERS) LTD  
SARUM ROAD, LUTON  
TEL: LUTON 597666/9

DR & MRS G. L. PLESTER  
9 BRIARS CLOSE, NUNEATON  
WARWICKSHIRE

A. HUNTER ESQ.  
RAVENMERE LTD. ALLRIC HOUSE  
21 FARLEY HILL, LUTON  
TEL: LUTON 32640

RICHMOND ELECTRONICS  
(MARKYATE) LTD  
HICKS ROAD, MARKYATE, HERTS.  
TEL: LUTON 840761

ROBINSON METAL (LUTON) LTD  
CALEB CLOSE  
464 DUNSTABLE ROAD, LUTON  
TEL: LUTON 53866

R. S. SAFRANEK ESQ.  
NEAHURST LTD, LONDON RD.  
LOWER STONDON, HITCHIN  
TEL: HITCHIN 94-813545

TRICENTROL CARS (LUTON) LTD  
326-340 DUNSTABLE ROAD, LUTON  
TEL: LUTON 31133

T. & H. TYRE SERVICES LTD  
MANOR ROAD, LUTON  
TEL: LUTON 27665

R. W. UNWIN ESQ.  
R. W. UNWIN & CO. LTD  
PROSPECT PLACE, WELWYN HERTS.  
TEL: WELWYN 6441

WALLSPAN BEDROOMS  
INDUSTRIAL ESTATE  
MAULDEN ROAD, FLITWICK, BEDS.  
TEL: FLITWICK 3621





**SPOTLIGHT  
ON  
CLIVE GOODYEAR**

# SPOTLIGHT

The benefits of a good youth scheme cannot be measured in terms of money because no-one can really put a value on how much it costs to bring a player through a club's junior teams. At Luton, manager David Pleat and his coaches are deeply conscious of the vast benefits to be gained from schooling and nursing young players until they are ready to make their mark at Football League level. That's why the boss was delighted when Clive Goodyear came into the first team for our Second Division match at Wrexham a month ago when he took advantage of an injury to Mark Aizlewood to impress Luton fans with his talents. Clive made five senior appearances last season and this term, he has done exceptionally well and scored one of the goals in our narrow 3-2 home victory over Derby County earlier in November. He took this season's appearance figures to five with our game at Blackburn Rovers and drew well earned praise from several quarters for his solid performances. Luton is Clive's only professional club, and his career at Kenilworth Road was the result of a tip from one of the manager's network of scouts.



This week, we asked Clive to answer the Spotlight questions. *Did you sign professional forms direct from school or, if you were working, what was your occupation?*

'I was an apprentice plumber when I heard that Luton wanted to sign me. I had always had ambitions to be a professional player and didn't need to think twice when I was offered terms by Luton.'

*After living in Luton for three years, how does it compare with living in Lincoln?*

'The biggest difference I have noticed is that Luton is much more noisier than my home town.'

*Have you any hobbies?*

'I like to participate in most sports but my favourites are snooker and badminton.'

*What do you remember about your Football League debut?*

'It was a match against Wrexham at Kenilworth Road. We won 2-0 but I remember it most because I should have scored with a header.'

*What is your biggest ambition in the game?*

'Every young player in my position has only one priority — to win a regular place in their club's first team. If I can establish myself, I will be well satisfied.'

## Complete fitted bedrooms // from around £450

### Wallspan Bedrooms

**FREE DESIGN  
FREE FITTING**

**see the full range at**

**LUTON**  
Unit 174,  
Bute Street,  
Arndale Centre,  
Luton, Beds.  
Tel: Luton 23015

**BEDFORD**  
59 Midland Road,  
Bedford.  
Tel: Bedford  
211327

**STEVENAGE**  
18 Market Place,  
Stevenage, Herts.  
Tel: Stevenage  
724853

**WATFORD**  
17/19 Queens Road,  
Watford, Herts.  
Tel: Watford  
38388



"BOBBIN" DINO AND THE REST OF THE LEATOWN SIDE SALUTE THEIR FANS AFTER BEING CHEERED ON TO YET ANOTHER ENTERTAINING VICTORY.

# HEAD FOR HEIGHTS!

WITH THE HATTER'S OWN HERO. Episode Ten.  
written and drawn by Ray Aspden.



# JUNIOR HATTERS



Today is Milton Keynes Day at Kenilworth Road and the large crowd of young people in our Juniors' Post/Echo Enclosure is made up mainly of school children from the Milton Keynes area. In addition, the pre-match entertainment is augmented by music provided by the Stantonbury Campus Brass — a group of young musicians led by their director, David Greig. May I say how much pleasure it gives us all to welcome them here today at Kenilworth Road.

This is a way of cementing the links created by the American-Can sponsored five-a-side soccer tournament held in the new city earlier in the season. The occasion is also honoured by the presence at the game today of the mayors of Milton Keynes and Luton, together with Mr David Hall, Sports and Community Officer, representing the Milton Keynes Development Corporation.

## MILLERS UNITED

We have a second group of young guests with us today. Following the recent visit of Junior Rams from Derby County, we are delighted to greet our friends from Millers United, the Rotherham United Junior Supporters Club. Five-a-side matches between teams of Junior Hatters and Millers United were played this morning and we are happy to offer the Millers the hospitality of our Junior Hatters' Clubroom and hope that they will enjoy an excellent match between two teams who have not met in a League match for many years.

## MASCOT AND ESCORTS' KIT

Great news this week for all Junior Hatters. One of Luton Town's Directors, Mr David Evans, ever keen to help the club in all ways, and especially our young supporters, says he feels all our Mascots and Escorts, for our home matches, should, in future, be given the Luton Town kit they wear on the great day, to keep as a memento of the game. He has very generously agreed to meet the

cost of the five kits provided for each game himself. Mr Evans, on behalf of all the grateful children who will benefit from the very kind and thoughtful offer a very big thank you.

This is a wonderful boost for our Junior Hatters' Club and I now invite those young people here today who are not already members of our ever-growing band of junior supporters to join us. Well over a thousand youngsters already have. If you are 15-years-of-age or under, complete the form below and send it, together with the annual subscription of £1 to Colin Ball, Junior Hatters, Luton Town FC, 70/72 Kenilworth Road, Luton.

## MASCOT AND ESCORTS

Mascot is Adam Broadbent of Whitehill Avenue, Luton. Adam is 10 and is a pupil at Hillborough Junior School. His interests are Luton Town and looking at cars and learning about them, and his favourite Luton player is Jake Findlay.

Escorts: James Marsh of Bassett Close, Redbourn, who is 10 and attends Redbourn Junior School. He plays football for Redbourn Under-11s, also plays golf, and chess, and is a cub. His favourite Luton player is David Moss.

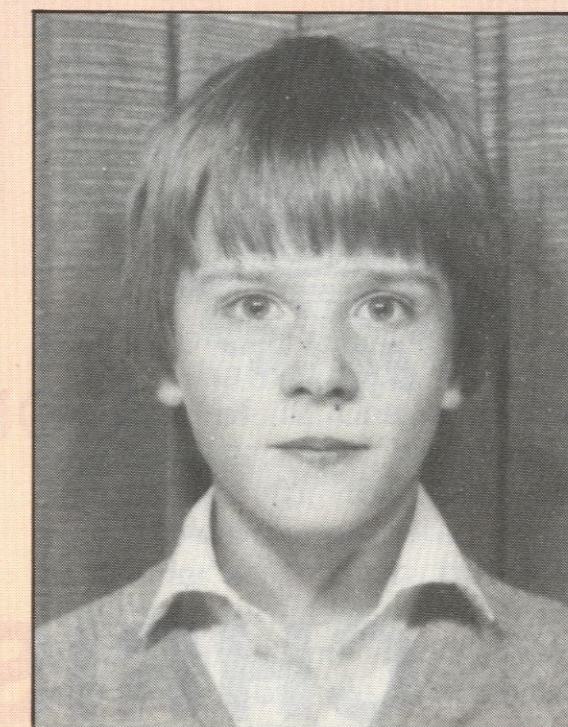
Stuart Harvey of Waller Avenue, Luton, is 7 and attends Downside Infants School. His interests are football, cricket and swimming, and his favourite Luton player is Ricky Hill, Junior Hatters President.

Paul Durrant of Oliver Street, Amptill is 11 and attends Alameda Middle School. His hobbies are football, fishing and matchbox collecting, and he plays for his school soccer team and Amptill Boys FC. His favourite Luton player is Junior Hatters President, Ricky Hill.

Gordon Kiernan of Atholl Close, Luton. Aged 10 and attends Kinross Mixed School. His interests are football and pool, and he plays soccer for his school team. Brian Stein is his favourite Luton player.

Look out in the Junior Hatters in next Tues-

## THE MASCOT...



ADAM BROADBENT

day's *Evening Post/Echo* for the names of the lucky Junior Hatters who have been drawn out of the hat for the next two home games against Chelsea on Saturday 12th December and Cambridge United on Boxing Day.

I would like to join the Junior Hatters' Club

Name .....

Address .....

.....

Date of birth .....

School .....

Team(s) played for .....

Interests .....

Favourite Luton Town player .....

Date ..... Signed .....

£1 enclosed  
(1981-82 membership expires 31st May 1982).

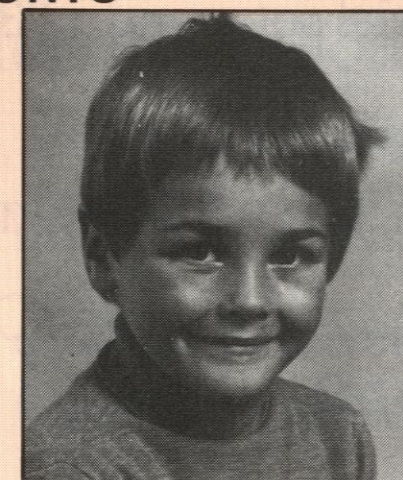
Finally, I said the Christmas meeting for our Junior Hatters was Thursday 10th December. This was a mistake — the date is Tuesday 8th December starting at 6.30 p.m. in the Hatters' Club.

Colin Ball  
Youth Development Officer

## ... AND THE ESCORTS



JAMES MARSH



STUART HARVEY

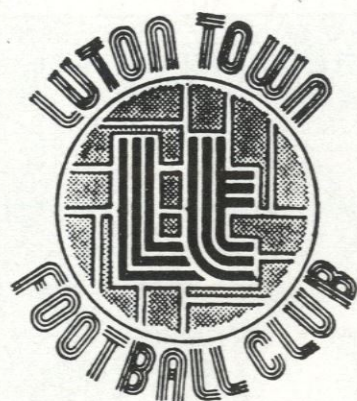


PAUL DURRANT



GORDON KIERNAN





JOIN THE FUN  
ALONGSIDE THE PLAYERS  
AT OUR

# CHRISTMAS PARTY

AT

**CESAR'S PALACE**  
**Monday 7th December**

CABARET

*starring* TONY CHRISTIE *with* VALENTINE  
& FULL SUPPORTING SHOW

*Doors open:* 8.00 p.m. till 2.00 a.m.

*Admission:*

£10 inc. a la carte menu • £6 inc. special set menu • £3 admision only

*Tickets available from*  
CATHERINE BALL Tel: Luton Town FC Luton 411622

*Cheques and Postal Orders made payable to*  
LUTON TOWN FOOTBALL CLUB

# TRAVELTIME

A nice pat on the back to open with this week. We received a letter from the lady who stepped in at short notice to act as an additional courier on a Blackburn coach, which says: 'I'd just like to say what a pleasure it was to be courier on Coach "D" on Saturday.

'You read and hear so much about the bad supporters I just thought I'd like you to know what a polite, well-behaved bunch of lads I had.'

Very encouraging, and it shows how our Travel Club supporters are keeping up the good name of Luton Town.

Thanks to support from David Packer, of 5 Nash Close, Stevenage, we can confirm we shall have a coach starting from Hitchin for the Shrewsbury game, leaving St Mary's Square at 9.30 a.m. Those wishing to travel from the Hitchin, Baldock, Letchworth, Welwyn and Welwyn Garden City areas will all be booked on this coach.

Should there be any empty seats, the coach will travel to

Maple Road to fill up, and this service will continue to operate until the end of the season. I would, therefore, appreciate bookings as early as possible in the week.

Coaches for Shrewsbury will leave Maple Road car park at 10 a.m. and fares will be adults £4, juveniles £2.50.

We shall arrange for our couriers to take bookings for the next away games on our coaches, which will probably be helpful to many of you.

In addition to our new service from Bedford, we have yet another service to announce, which also began today — using United Counties coaches.

From Sandy, Market Square, 13.15; Biggleswade, Market Square, 13.25; Langford, the Plough, 13.30, then to The Boot, Henlow, The Crown, 13.40; Shefford, Ivel Road, 13.45; Kenilworth Road, 14.30.

Fares: adults £1.50, juveniles up to and including 15 years £1. Coaches will depart from Kenilworth Road immediately

after the final whistle.

My thanks to Howard Stevens, of 12 Chapel Fields, Biggleswade, for his helpful suggestions for this new service. Howard is prepared to act as courier on this run, but does need someone else to help, as, unfortunately, he works shifts, and will not be able to attend all games. Howard would be happy to take bookings. Telephone Catherine Ball for details.

Mr Harris of 95 Woodall Lane, Welwyn Garden City has volunteered his services as courier on the 'in' run from Welwyn and associated areas.

We need to have an idea of the number of people who will be using our in coaches. It would be helpful if you would give your names to your couriers.

Details of the last two away trips this year, to Barnsley and Norwich will be in the next magazine so you may book well in advance.

**Catherine Ball**  
Travel Organiser

**Building houses to make homes in**

at

Warden Hill, Luton  
Parkside, Houghton Regis  
Two Mile Ash, Milton Keynes  
Church Green, Bletchley  
Kimbolton Gardens, Bedford.



**Barratt**

Telephone: Luton (0582) 422771



# FLASHBACK

A look at Luton Town  
a decade ago.

By BRIAN SWAIN  
Sports Editor, Luton News

Now and again you can be lucky enough to go to a soccer match expecting no more than a good performance from your team and the hope that they might win, and find yourself involved with something extra special.

Ten years ago this weekend there were only 9,910 of us in attendance to see if Luton Town could pull away from the relegation zone in the Second Division at the expense of Portsmouth.

And in a period of memorable — and grim — events, the match we saw was so amazing that there was not a single grumble from the club when the happy fans staged a pitch invasion at the end.

CHRIS NICHOLL



The previous week long-suffering supporters had, at last, seen a victory to end a run of eight games without one, in a match at Blackpool which will be remembered best for what happened before the kick-off.

In those days the Town travelled by chartered train, carrying supporters as well as the team. Blackpool had just taken on Bob Stokoe from Carlisle as manager, having been relegated from the First Division the previous year.

The train got away from Luton on time, but then ran into all sorts of problems. After an engine failure at Kettering and a broken rail at Warrington, it was clear they wouldn't reach the ground by 2.30, the last time for handing in the team-sheet to the referee.

Secretary Bob Readhead and coach Jimmy Andrews jumped off the train at Preston, and phoned centre-half Chris Nicholl, who had travelled up by car the previous day. He took down the 12 names for the team-sheet and duly handed it in on time.

The rest of the players, meanwhile, had to get changed into their kit on the train, which arrived at Blackpool 22 minutes before kick-off. A police escort sped the coach from station to ground, and the Town just made it, with Alan Hardaker, the Football League Secretary, watching from the stand.

Just to complete a happy day-trip, despite snow and driving sleet throughout the game, the Town defended like demons and pinched the points with a goal by Don Givens after John Burridge had palmed out a corner by Gordon Hindson.

Fog made the grim headlines

in Luton a couple of days later, when the M1 motorway was the scene of death and destruction which shocked the country. Eight people were killed, 43 seriously hurt, and dozens suffered minor injuries as more than 100 vehicles were involved in a series of crashes as cars and lorries hurtled into a rolling wall of fog.

I remember a friend living 100 yards from the motorway ringing up to warn me that something big was on. I heard the sound of crashing vehicles and screaming people down the phone line.

But if that unhappy memory will stay with me forever, so will the incredible events of 27th November 1971, when Luton Town entertained Portsmouth.

For the first-half we groaned and moaned as Portsmouth showed every sign of dishing out a real hiding. Reynolds scored twice to make it 2-0 to Pompey at half-time and even Alec Stock admitted later that it could have been 4-0.

He changed the tactics in the second-half, taking off Vic Halom and sending on Viv Busby, and pushed Peter Anderson forward to field a 4-2-4 formation.

And the game was transformed. Mike Keen headed a goal from a corner three minutes into the second-half, and all-out attack became the order of play.

Gordon Hindson unleashed a 35-yard shot which bulletted past Jim Standen for the equaliser, his first goal for Luton Town, and in the hectic finale Givens, hobbling with an injury, shot against a post and Anderson popped in the winner to complete one of the most exciting come-backs I have ever seen.

LUTON

Wallspan  
Bedrooms  
Showrooms throughout  
London and Home Counties  
SEE US IN  
LUTON ARNDALE CENTRE ☎ 23015

SCORE  
WITH  
MATTERS  
BINGO.

Wallspan  
Bedrooms  
FITTED BEDROOM FURNITURE  
SEE US IN  
Yellow Pages

Today, for your pre-match entertainment, we take much pleasure in welcoming the STANTONBURY BRASS BAND whose music we're sure you'll enjoy.

In addition, we'll be playing our Wallspan games — Take Your Pick and bingo — plus the excitement of the match. It looks as though we can look forward to almost three hours of non-stop entertainment.

For those of you who enjoy listening to bands, we are pleased to announce that the Salvation Army Band have again volunteered to play Christmas music before our Boxing Day match with Cambridge.

## WIN A £400 HOLIDAY

It's your chance today to win a £400 HOLIDAY VOUCHER with SILVAIR HOLIDAYS. Yes, again we are offering a

£400 holiday voucher as star prize on bingo for a line across on top house.

Finally, a word about our Wallspan and Bernards World of Sport Target Golf competition.

This competition will run on a regular basis starting from the Chelsea match. We've already received a number of entries but still have room for more competitors.

Why not enter today? Just drop a line to Mary Bunyan, Luton Town FC, 70-72 Kenilworth Road, Luton.

Remember, you don't need to be an experienced golfer, it's great fun and it also gives you the opportunity to taste the atmosphere of the matchday by walking down the players' tunnel and being out there on the pitch.

On top of all, there will be weekly prizes with a bumper prize of a full set of golf clubs waiting for the overall winner.

## CROSSWORD

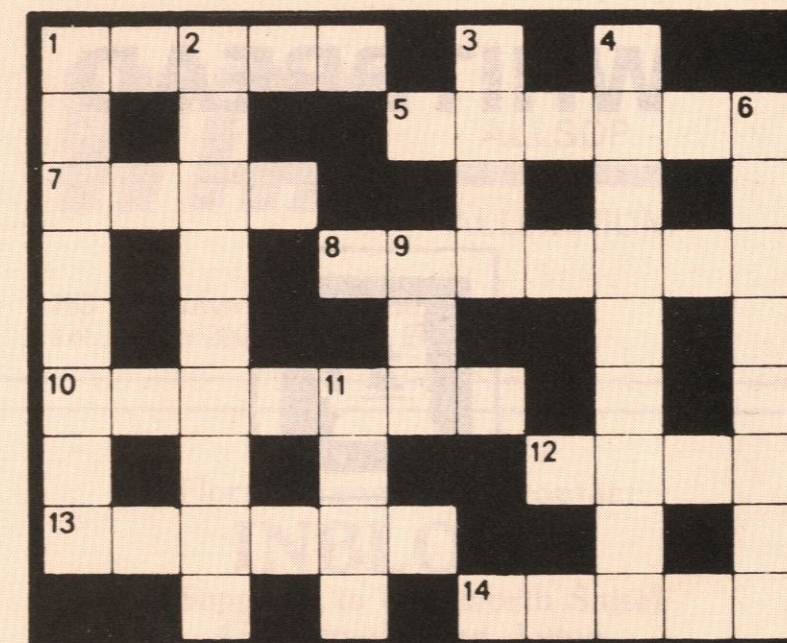
### CLUES — Across:

1. Exercises some ball-control (5); 5. Popular, palindromic midfielder whose clubs included Newcastle, Lincoln, Manchester City, Notts County and Bradford City (6); 7. McCulloch, maybe (4); 8. He managed Hereford between Addison and Ford (7); 10. Despite being joint second-highest scorer in the First Division last season, his club was relegated (7); 12. Norman Bell has frequently broken this (4); 13. Benny ..... managed Morton into the Premier Division (6); 14. See 1dn.

### CLUES — Down:

1 & 14ac. End-of-season circulars which mean bye-bye to players and buy-buy to clubs (8,5); 2. Club for whom Colin Garwood has top scored in the last two seasons (9); 3. .... Price, a summer signing for Spurs (4); 4. The least-fancied club in a cup match — though, no doubt, 'The Terriers' would object to being labelled this! (9); 6. England international who joined Internazionale and carried on being capped (8); 9. McCulloch, maybe (3); 11. Miller or McLeish (4).

• Check your answers with the solutions on Statistics page.





# AROUND THE TOWN

## FA YOUTH CUP TIE

Our youngsters will be in action in the FA Cup when they visit Charlton Athletic in the second round on Monday at the Valley. A replay, if necessary, will be staged at Kenilworth Road on Thursday. Further details will appear in the local Press next week.

## PROGRAMME WANTED

Jimmy Simpson writes from the Isle of Man with a plea for a Luton supporter to help him out with his programme collection.

Jimmy, who lives at 25 Barrule Road, Willaston, Douglas, Isle of Man, is looking for a copy of the Luton v Tottenham programme played on October 26th 1974 and is willing to pay £2.50 for a copy. All replies direct to Jimmy please.

## WELSH CONNECTION

We have heard from exiled Luton fans in North Wales. Edward Loughnane wrote to us from Connaught Quay to say: 'I am writing on behalf of my brother and I. We travel to Lancashire and nearby counties

to watch the Town play and are both strong Luton fans.

'But we are in the wilderness up here and cannot obtain team news and match reports. Because of work restrictions, we cannot travel to watch Luton play at home or further south, but we can reach the Midlands.

'We are converting many Welshmen and 14 of us travelled to Bolton and nine to Oldham. We hope to visit Anfield, Old Trafford and Maine Road next season.'

**BEWARE OF IMITATIONS**  
THE CLUB HAS RECEIVED TELEPHONE CALLS FROM PEOPLE WHO HAVE PURCHASED ITEMS FROM THE SHOP AT THE TOP OF OAK ROAD. WE WISH TO MAKE IT CLEAR THAT THIS SHOP HAS NO CONNECTION WITH LUTON TOWN FC.

OFFICIAL SOUVENIRS ARE OBTAINABLE ONLY FROM OUR KIOSKS INSIDE THE STADIUM AND FROM THE POOLS OFFICE.

## CALLING ROTHERHAM FANS

The London branch of the Rotherham Supporters Club have asked us to remind all Millers' fans that they can join by applying to D. R. Baister, 12a Goldhurst Terrace, London NW6 3HU.

## PROGRAMME FAIR

Walthamstow Avenue FC's fifth annual Football Programme Fair will be held at Green Pond Road, London E17 on December 6th. Collectors from all over England will attend this prestige event which includes a personal appearance by Trevor Brookling.

## FAR AND WIDE

The following letter was received from Malcolm Wharton, who lives at Woodsears, Sheffield, and emphasises that we have a wide following.

*Dear Mr Pleat,*  
*My initial purpose in writing to you is to acknowledge receipt of my copy of the annual directors report and thank you for it.*

*My primary purpose, however, is*

## LUTON TOWN v CHELSEA — SATURDAY DECEMBER 12th MESSAGE FOR SEASON TICKET HOLDERS

As the entire Kenilworth Road terrace is being allocated to visiting supporters, season ticket holders are requested to use either the Enclosure or Oak Road end for this match. Any season ticket holders entering the Kenilworth Road terrace does so entirely at his/her risk.

*to congratulate you and everyone concerned with running affairs at Luton Town Football Club for the magnificent state which currently exists at Kenilworth Road.*

*As an exile I am no longer able to see as many games as I would like but my fanaticism remains as strong as ever and I am of the firm opinion that the present team is playing the most attractive football that I have ever seen from any Luton team of the last 25 years at least.*

*With the team being as successful as it is, my wife now is enjoying her weekends and feels able to plan social events in the reasonable hope that I will not be in the depths of despair after another disappointing result.*

*I sincerely hope that the Town will gain their just reward at the end of*

*the season by once again preparing to grace the First Division.*

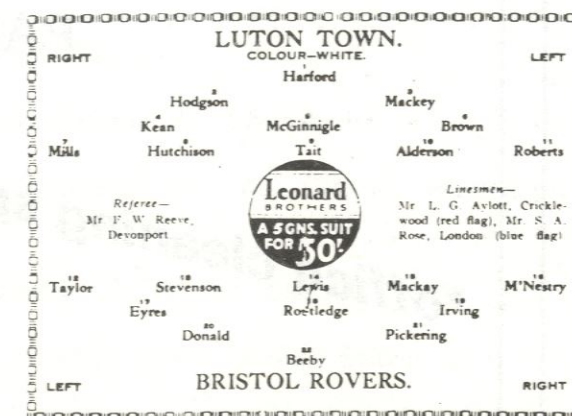
*My support will not change either way but for the sake of natural justice at least, I hope you gain the praise and prizes you deserve.*

## DON'T FORGET THE PALACE

Have you booked for our super pre-Christmas party with the manager, directors, players and officials? If you haven't, you had better make your move because tickets are selling quickly.

Note the date — Monday December 7th at Cesars Palace. The cabaret is provided by Tony Christie with Valentine in support. And prices are very reasonable.

Full a la carte meals and admission



Our president Tom Hodgson is not feeling too good at the moment, but this little piece of nostalgia should cheer him up in addition to bringing back a few memories for our older fans.

This reproduction is taken from a Luton programme dated March 13th 1933 when Tom was playing at right back.

are available for only £10, with a set meal and admission costing only £6. Admission only costs only £3.

See you there — if you've got a ticket! They are available from Catherine Ball on Luton 411622. Cheques and postal orders should be made out to Luton Town FC.

**WHITBREAD**



**TROPHY  
BITTER**



*Your Local Tour Operator*  
Book now for your Summer Holiday  
Brochures available from:  
**Silvair Holidays Ltd**  
**Silvair House**  
13-15 King Street, Luton  
Tel: 412131

For ALL your Window  
and Door requirements

**WHA** ALLSOP  
ALUMINIUM

153 Newtown Street, Luton  
Tel: Luton 20011/23472. Eves 424650

For all your  
Floral arrangements contact:  
**INBLOOM**  
(Suppliers to Kenilworth Suite)  
45 Latimer Road, Luton



# TODAY'S MATCH SPONSOR Cleandustrial Services Ltd

84 ALDERMANS HILL  
PALMER'S GREEN N13 4PP

**\*office cleaning specialists**

**AND ALSO IN**

**\*WINDOW CLEANING**

**\*FLOOR MAINTENANCE**

**\*FACTORY CLEANING**

**\*WALL WASHING**

**\*BUILDERS CLEANS**

**\*CARPET CLEANING**

**Offices in:**  
**Croydon, The City, Greenford,**  
**Edmonton, Nottingham, Catterick, Preston**

Phone: **01-882 4626** (6 lines) for details

Telex: **265273**

# LUTON LEISURE

## NEWS FROM LUTON BOROUGH COUNCILS LEISURE DEPARTMENT

At Lewsey Park, the Chiltern Radio five-a-side tournament started last Wednesday. The complete draw for the preliminary rounds are as follows:

### 9-12 years

#### Group 1

St Josephs Youth 'A', Potton Colts, St Josephs School 'A', Blue Star.

#### Group 2

St Josephs Youth 'B', Toddington Rovers Youth, Hillborough Hatters, St Josephs School 'S'.

#### Group 3

Chiltern Lions, St Josephs School 'J', Wells Stars.

### 12-14 years

#### Group 1

Hillborough Hatters 'A', Toddington Rovers Youth, Potton Colts, St Josephs Youth 'A'.

#### Group 2

Icknield Youth, Hillborough Hatters 'B', St Josephs Youth 'B', Dunstable Wanderers.

### 14-16 years

#### Group 1

Hillborough Hatters 'A', Dunstable Young Peoples Club, Kokni Muslim Sports Club, Red Star.

#### Group 2

Hillborough Hatters 'B', Newham Colts FC 'A', Icknield Youth, G & L Continental Foods.

#### Group 3

Elm Farm Colts FC 'B', Japan FC, Dunstable Wanderers, Toddington Rovers Youth.

#### Group 4

Elm Farm Colts FC 'A', Newham Athletic FC 'B', Amptill Youth Club, Olympic Runners.

### Adult Competition

#### Group 1

Housing Social FC 'A', International FC 'A', Dunstable Young Peoples Club 'B', Stopsley Harriers FC 'A'.

#### Group 2

Red Star, FC Coral, Bedford Boys Club, Dads n Lads.

#### Group 3

Farley Eagles, Excelsior Breakaway FC, Sporting Chiltern, GEC Dunstable 'B'.

#### Group 4

Boater US 'B', Mission Impossible, Luton & Dunstable Hospital FC 'B', GEC Dunstable 'A'.

#### Group 5

Snowball Snatchers, Wells Stars, Dunstable Young Peoples Club 'A', Arlesey Albion FC.

#### Group 6

Greene King FC 'A', Lewsey FC 'A', Colts 81, Campani FC.

#### Group 7

Greene King FC 'B', FC Houghton 'B', Stopsley Harriers 'B', Dunstable Wanderers.

#### Group 8

Kempston Town Youth 'A', Blue Star, Sundon White Hart FC, Flint United.

#### Group 9

Dynamo Trewax, Olympic Runners, Chiron Venture Scout Unit, Luton Youth House 'A'.

### Group 10

Luton Youth House 'B', International FC 'B', Kempston Town Youth 'B', Areo Marine Plastics.

### Group 11

Sells 7th Venture Unit, Clophill FC, Lewsey FC 'B'.

### Group 12

Luton & Dunstable Hospital FC 'A', Old D. Wanderers, Chiltern Hotel 'B'.

### Group 13

FC Houghton 'A', Boater US 'A', St Josephs Youth.

### Group 14

Stopsley Harriers 'C', Caf'O, Kokni Muslim Sports Club.

### Group 15

Southcott Village 'A', Chiltern Hotel 'A', Co-op United.

### Group 16

Southcott Village 'B', Crest Cars, Housing Social FC 'A'.

There's no chance of getting bored over Christmas. In addition to the sporting activities in various centres around town, we have arranged some super Christmas shows. They will take place between Monday 21st December to Wednesday 23rd December. The shows are as follows:

### Lea Manor Recreation Centre

21.12.81: 10.30 a.m. to 12.30 p.m. Cheeky Dog's Xmas Party (20p); 21.12.81: 2.30 p.m. to 4.45 p.m. Bad News Bears (film) (20p); 22.12.81: 2.15 p.m. to 3.45 p.m. Black Rose Puppet Theatre Xmas Special (10p).

### Lewsey Centre

21.12.81: 10.30 a.m. to 12.45 p.m. Bad News Bears (20p); 22.12.81: 10.30 a.m. to 12 noon Black Rose Puppet Theatre Xmas Special (10p); 23.12.81: 10.30 a.m. to 12.30 p.m. Cheeky Dog's Xmas Party (20p).

### Farley Hill Community Centre

21.12.81: 10.30 a.m. to 12 noon Black Rose Puppet Theatre Xmas Special (10p); 22.12.81: 10.30 a.m. to 12.45 p.m. Bad News Bears (20p); 23.12.81: 10.30 a.m. to 12.30 p.m. Christmas Crackers with Uncle Tubby (20p).

### Putteridge Recreation Centre

21.12.81: 2.15 p.m. to 3.45 p.m. Black Rose Puppet Theatre Xmas Special (10p); 22.12.81: 2.30 p.m. to 4.45 p.m. Bad News Bears (20p); 23.12.81: 2.30 p.m. 4.30 p.m. Christmas Crackers with Uncle Tubby (20p).

### Hightown Recreation Centre

22.12.81: 10.30 a.m. to 12.30 p.m. Cheeky Dog's Xmas Party (20p); 23.12.81: 10.30 a.m. to 12.45 p.m. Bad News Bears (20p).

There are still a few places left for the *Evening Post* special football Christmas coaching course to be held at Lea Manor, Luton Regional Sports Centre, and Putteridge Recreation Centre, the course commences on Monday 21st December to Wednesday 23rd December. Cost for all three days is £4.

The *Luton News* end of year cricket coaching course is filling up quickly. If you are between 9 and 16 years of age the opportunity exists to improve your cricket. The venue is the Luton Regional Sports Centre and commences on Tuesday 29th December to Thursday 31st December. The cost for all three days is £4.



# A NEW FACE

**This afternoon, we introduce Graham Mackrell, our new general secretary.**

Joining Luton Town at this time is a very exciting prospect for me with the club heading the pack and facing the long haul towards the First Division. It is going to be very different after my seven years with AFC Bournemouth but it is a challenge I am looking forward to.

I was very happy at Bournemouth and I am sure that the experience I gained there will hold me in good stead.

When Luton Town's Chief Executive, John Smith, invited me to join the club, however, I was delighted to become part of such a progressive club which is I feel on the threshold of an exciting new era.

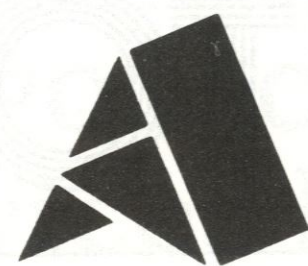
John Smith has an excellent reputation amongst his fellow professionals in the game and the opportunity of working with him was also another factor in bringing me to Kenilworth Road.

Part of my brief from chief executive and the chairman is to ensure the administration of the club is geared to cope with the pressures which accompany success and which will increase dramatically if we can sustain our challenge and reach the First Division.

The problems over the A505 relief road are something all our supporters are aware of. In the Bolton Magazine, John Smith commented on the possibility that the football club may try to relocate on a site away from Kenilworth Road.

In the meantime, however, we have to strive to ensure that we can accommodate our spectators with good facilities within our current ground structure.

These are exciting times for Luton Town and I am determined that the administration of the club will not be inferior.



## American Can (UK) Ltd

**MANUFACTURERS  
AND SUPPLIERS OF  
HIGH QUALITY FOOD  
AND DRINK CANS  
THROUGHOUT THE  
WORLD**

**PROMOTE YOUR  
COMPANY WITH  
LUTON TOWN F.C.**

**ADVERTISING  
FROM £50**

**SPONSORSHIP  
FROM £125**

**For further details contact:  
MIKE BEEVOR  
on Luton 415978**

# JOHN'S JOURNAL



For those supporters who do not visit the club offices very often, changes have been made with regards to match day ticket sales.

With the departure of Bill Butler and Margaret Duffy from the ticket office, Mike Hardwicke with his staff have taken the job, and structural changes will be made shortly to bring lotteries, match tickets, travel bookings and souvenirs all under one roof.

But, for the time being advance sales will be dealt with from the pools office at 74 Kenilworth Road. On the day of the game, the ticket sales will revert to the normal ticket office. We hope supporters will bear with us during this period of reconstruction.

Having no first team game here

for the last two Saturdays has enabled us to catch up on the paperwork which seems to get bigger every week. This week alone I have had about a dozen letters from Poland. I do try to answer most of them.

We do receive a number of letters from different countries requesting badges, photographs and autographs but there is never any money enclosed. The cost of sending these items back is astronomical, so I'm afraid the people concerned don't have their requests granted.

A lot of people complain about the price of admission to football matches being too high, but I won't go into the whys and wherefores of that. I have seen the majority of our reserve team matches this year and I

cannot understand why we don't get more people in to watch them. The entrance fee is only 50p.

Season ticket holders are admitted free and yet our average home gate is about 250 — and most of them are season ticket holders. The standard of football is good and the majority of the players are the first team players of the future.

Their next home match is on 5th December when Chelsea are the visitors, so that's an attraction to start with. Bring a friend with you, you won't be disappointed. You can sit or stand, it won't cost you any more.

**John Wilkinson**  
Secretary



**The wheels  
for  
British  
industry  
DAF Trucks**

**HENLYS**

first for

**TALBOT-PEUGEOT**

**Luton Way, Dunstable, Beds.  
Telephone: 64171.**

**LUTON TOWN PLAYERS  
DRINK**



**MILK**

**For your nearest depot  
ring Luton 23580**



# CENTURY CLUB

A welcome today to a new team to visit Kenilworth Road this season, Rotherham United, and a special welcome to any of their Vice-Presidents who may have joined us in the Century Club.

Those of us from the Century Club who made the journey to Blackburn recently had a very enjoyable day, enhanced, of course, by the result.

It is our intention to have another awayday before the end of the season, and in due course, details will be announced. Members wishing to take part will have to put their names down quickly, as these outings are always very popular.

Another match sponsorship from the Century Club today. Associate member John Hall, of Cleandustrial Services Ltd, deserves our congratulations. John is a new friend to us, although his company have long had associatons with the Football Club.

Finally, may we remind everyone to please return raffle counterfoils and money to Catherine Ball as soon as possible.

# MATCH SPONSOR

Like the 'Town' our sponsors today are top of the league within their sphere in the cleaning industry. Under the guidance of Chairman and Managing Director Brian Cole a keen and enthusiastic Luton supporter for years, Clean-dustrial have developed a unique approach to your cleaning problems. No matter what the difficulty they are willing to offer free advice, advice given by qualified management who have all undergone a most extensive training programme to

equip them with the knowledge necessary to cope with todays environmental needs, for more and more today everyone is looking toward a much cleaner environment at work, at leisure and at home.

Cleandustrial Services assist in planning the maintenance required in your premises, maintenance which will cut both operational and production costs, and also at the same time improve safety, health and profits. Nowadays cleaning is not just concerning a mop and bucket etc, specialised equipment and techniques are necessary to ensure that modern computerised equipment does not grind to a halt just because a small amount of dirt was not removed. The most expensive computer can grind to a halt if the correct cleaning procedures are not adhered to.

Cleandustrial Services has its head office in Palmers Green, North London, and with nine service centres strategically located throughout the country, they are able to give the best possible service wherever it is required.

Why not contact them — you never know you might be able to put your premises on top of the league.

# IN RETROSPECT

## LUTON TOWN v ROTHERHAM UNITED

### Division Two:

1951-52	1-1(h)	1-0(a)
1952-53	2-1(h)	3-1(a)
1953-54	1-1(h)	1-2(a)
1954-55	4-0(h)	0-2(a)
1960-61	2-1(h)	2-5(a)
1961-62	4-3(h)	1-1(a)
1962-63	2-3(h)	1-2(a)

### Division Three:

1968-69	3-1(h)	2-2(a)
1969-70	Luton 2 (Allen, Slough)	Rotherham 1 (Swift)
	Rotherham 1 (Leigh, pen.)	Luton 1 (Allen)
Teams for last game here, March 27th 1970:		
LUTON: Starling, Ryan, Bannister, Slough, Branston, Moore, Busby, Allen, Macdonald, Keen, French (Harrison).		
ROTHERHAM: Tunks, Houghton, Leigh, Hague, Watson, Swift, Warnock (Fanthan), Lill, Phillips, Bentley, Mullen.		
Attendance: 14,315.		

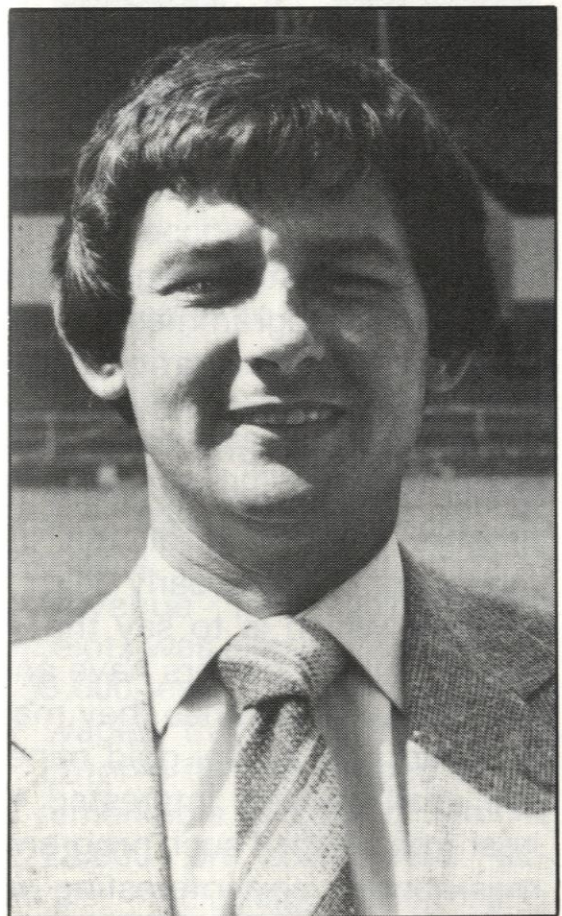
# SAVE OUR SOCCER

Taking Sunday 27th September 1981 League tables, this would produce a seeding of 1-92. Add to this the top four Alliance Premier teams totalling 96 teams, divide by eight divisions of 12 teams and you have the basis of something different.

Let us, in our new competition, have the emphasis on success with no losers, no relegation. The competition will be channelled towards eight finalists producing an outright winner. It should attempt to create interest of some sort in every game. Let us take those eight divisions and seed them with the 96 clubs as follows:

Each team would play home and away in their respective division and total 22 games at the end of which a League table would be complete, showing each team's position.

JOHN SMITH



**In recent weeks, Luton chief executive John Smith has looked deeply at the problems facing British soccer. This afternoon, he continues his far reaching investigation.**

Let us take it that at the end of this first stage, the seedings were accurate (most unlikely). Clubs would be moved based on their respective position, into new divisions to comprise the second part of the competition. This would then produce the eight finalists.

This second part would also give the clubs a further 22 games. The eight finalists could then play off on any agreed basis. On this system there could be a break in mid-winter. Also, the number of clubs could be reduced if it were felt that there were too many games.

Would this kind of competition stimulate greater all-round interest? Each season, the seeding could be based on the previous season's results, or a seeding panel appointed which in itself would create further interest. Each season would appear fresh in the sense that you could be playing all new teams.

There would be no relegation, therefore, nothing to lose.

However, would the population of, say, Halifax, be happier with their team playing Ipswich, Southampton, Notts County, Norwich, etc., but with little hope of them ever achieving the

final stages, or the current situation where they could be promoted to the Third Division and so on.

Would the major clubs' attendance reduce because they were playing Darlington rather than, say, Middlesbrough? It could be argued that the competition in itself would generate the interest to produce the crowds at Liverpool, Manchester United, Arsenal, etc.

Of course, another problem is when, say Arsenal visit Lincoln. The Third and Fourth Division grounds would need to be made safe, and would probably have to comply with the Safety of Sports Grounds Act. Could their administration cope with regular visits of teams like Arsenal and Spurs?

My own view is that a new interest would be generated in football, providing an almost Cup-tie atmosphere throughout the competition. It would be a big incentive to all with the possible exception of the privileged few at the top. Tremendous interest would be generated in many of the soccer-starved areas, providing fresh stimulus which, in turn, would produce fresh investment.

Of course this is just another talking point, of which there are many variations. However, it does provide a different approach, getting rid of the fear which haunts relegation, the emphasis is changed to achievement, rather than failure.

Maybe it is a road like this we should walk rather than look at 'old hat' propositions which have been rejected and tried before. Excitement should be the theme.

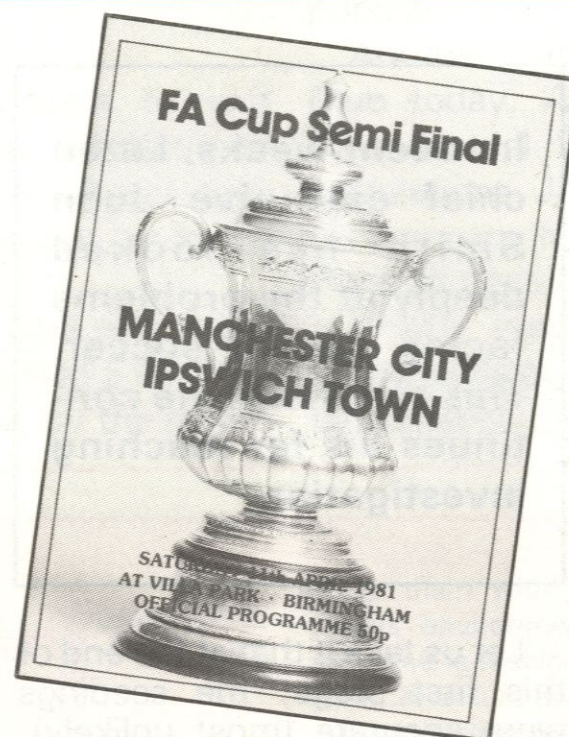


# PROGRAMME CORNER

By JOHN FARMER

Programmes from the end of last century are now, of course, desperately scarce. The few that are still in existence tend to change hands at over £20 each on the rare occasions that they come on to the market.

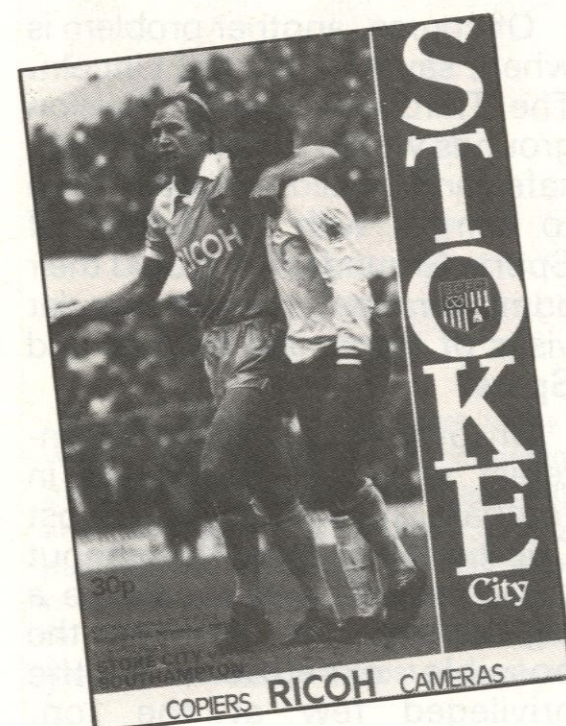
A couple of years ago, several such items came into the hands of a programme club and were quickly snapped up by eager col-



istence enhances the value to most collectors. In the small collection referred to above only one present-day club was featured, Millwall playing what appears to be a friendly game against N. L. Jackson's XI at the Essex cricket ground, Leyton.

Corinthians, the famous amateur club seem also to have played on that ground in addition to their more usual venue at Queen's Club.

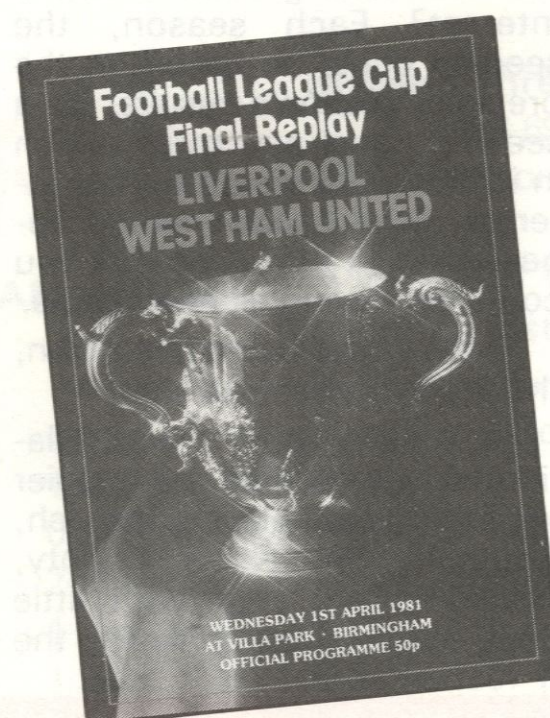
Even these general facts tell



lectors who were prepared to pay what may seem to be ludicrous prices to anyone not bitten by the antique programme bug.

For such programmes are cherished for their antique value rather than for such flimsy information as they may contain since they are in most instances single card issues with lists of teams, referee etc, and with space left for the score to be written in.

The fact that the games often involve teams no longer in ex-



us something about the early history of the game inasmuch as there were a number of multi-purpose grounds around and it seems likely that, in some instances, not only the same stadium but the same pitch was used for football in the winter and for cricket in the summer.



Whilst we may regret that such early programmes carried very little information (the earliest programme notes seem to date from around 1900) even single card issues do seem to breathe something of the atmosphere of those early days.

All of which is to say that if any of our supporters have any pre-1900 programmes they may be sitting on a mini-gold mine. We shall be very interested to hear from them if such programmes contain any interesting information from the early days.



## SHOP WINDOW



"The harsh reality of the recession reared its ugly head again this week when Luton Town's annual accounts revealed the Hatters didn't take enough at the turnstiles to pay the players wages.

The club's previous financial year was saved from disaster by healthy commercial activities and a £90,000 loan from the directors.

Revenue from attendance receipts was almost £433,000 — £59,000 less than the club paid in wages, travel and training.

Luton's till was topped up by a remarkable surplus of almost £222,000 on commercial activities including fund-raising and catering, and those figures make it perfectly clear that,

without lotteries there wouldn't be a professional club at the top of Kenilworth Road."

Quoted by Eric Harris recently in the *Evening Post's Sports Final*, these few words mean a lot to the commercial department in their endeavours to provide even more cash to the football club in future.

We are equal to the task at hand and the responsibilities are very light on our shoulders when we recognise that our manager and his players are also doing so well in their efforts to succeed.

We really have two of the best teams on and off the park and I am sure we will reach even greater heights in the future with your support.

By continuing to be active lottery agents as well, this way you will be helping the Hatters on both fronts.

We have recently combined the sale of advance matchday tickets with the Pools Office at 74 Kenilworth Road, Luton (Tel. Luton 30748) and are open from 8 a.m. until 5 p.m. **lunchtimes included.**

By the way, you can also purchase souvenirs from here. Why not do some early Christmas shopping, pay for your lottery tickets and get your match tickets all at one time, under one roof.

**MIKE HARDWICKE**  
Commercial Manager





# ACTION

**NEWCASTLE  
UNITED  
LUTON  
TOWN**

**3**

**2**



There were a great deal of sick Luton fans leaving St James Park as the Town went down to a last minute winner by Roy Varadi. With only 10 minutes left to play the Hatters were two goals down until goals by Dave Moss and a dramatic goal by Mal Donaghy brought us level only to be beaten in the dying seconds.

*Top left:* Super-sub, Raddy Antic looks quite happy as he joins another second-half attack.

*Bottom left:* Steve White takes a glancing header.

*Above:* Dave Moss marks the beginning of the 'Towns' revival with this penalty.

*Below:* The look of despair on Dave Moss's face as he struggles with the United keeper while the ball is left untouched.





# VISITORS

Emlyn Hughes needs no introductions to the fan on the terraces. The ex-Liverpool and England defender has enjoyed one of the most distinguished careers in the Football League.

But Hughes now has his eyes on a new horizon — a successful arrival as a manager with Rotherham United — and he admits that, when he succeeded Ian Porterfield at Millmoor, he took the biggest gamble of his life.

Hughes had played only 27 games for Blackpool before his talents were spotted by Liverpool. And he went on to make a mammoth 474 appearances for the Reds before moving to Wolves.

He has played under four England managers and two at Anfield, and that should provide a glowing testimony to his ability. But can Hughes succeed as a manager?



EMLYN HUGHES — Rotherham manager in his playing days.



Back row (left to right): E. Hughes, M. Rhodes, R. Fern, P. Henson, P. Stancliffe, R. Mountford, G. Brown, J. Green, R. Moore, S. Fleetwood, A. Taylor, B. Claxton.  
Middle row: S. Winn, I. Vaughan, G. Forrest, M. Gooding, J. Breckin, J. Mullen, T. Towner, R. Finney, P. Carr, J. Seasman, B. McEwan.  
Front row: G. Ingham, N. Benton, C. Waller, N. Johnson, B. Love, K. McLaughlin.

When Porterfield quit to join Sheffield United in the close season and Hughes decided to accept the challenge to replace him, he said: 'Taking this job is the most crucial decision I have had to make in my entire career.'

Porterfield took Rotherham to the Third Division Championship in his first full season as manager. And Hughes has the task of following that with promotion to the Second.

But Hughes may have to disappoint the fans. 'My first priority is to consolidate,' he added.

If Hughes does manage to take Rotherham to promotion,

he will be tagged as a local hero. If they are relegated, he will be struggling to make his mark.

But it's a challenge he accepts with relish and determination. 'I am well aware of the number of men with excellent playing reputations who have not been able to turn that success into the managerial side of the game.'

'All I can do is to go about the job in the right and proper way. In my opinion, that is the Liverpool way.'

It must have been a tremendous disappointment to the Rotherham fans when Porterfield, named Third Division

# LINE-UP



signed from Cardiff City at the start of last season. He hit 25 League and Cup goals to become top scorer and a firm favourite with the club's fans and he is equally keen to create a big impression in the Second Division.

This afternoon will provide Luton fans with the opportunity of having another look at Rodney Fern, a former favourite at Kenilworth Road. He hit the goal which took the title to Rotherham in the last match last season.

Another former Luton man in the Rotherham line-up is John Seasman who joined them from Millwall.

Other experience in Hughes' team is provided by Tony Towner who joined Rotherham at the same time as Seasman; former Manchester United Ray Mountford and Phil Henson who was formerly with Manchester City, Stockport County and Sheffield Wednesday. He also had a spell in Holland with Sparta Rotterdam.

Manager of the Year, moved six miles down the road to United.

Rotherham created records last season which must have been the envy of every club in the Football League. They didn't concede a goal in 24 of their games and were unbeaten at home all season.

That record left the fans buzzing with disbelief when Porterfield left. But, within days, Hughes arrived to signal the start of a new era for the club.

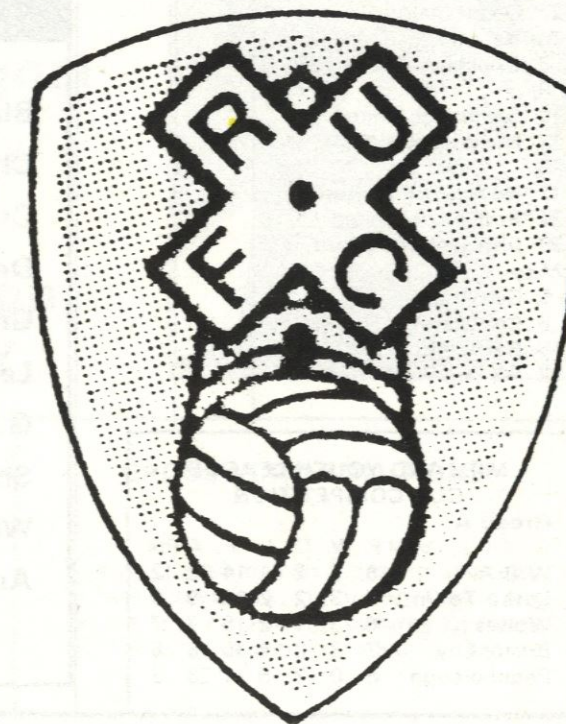
This season, however, has not been a bed of roses for Hughes. Rotherham are in the wrong half of the table although they raised plenty of eyebrows

by thrashing Chelsea 6-0 recently.

Before last Saturday's home game against Charlton Athletic, they were unbeaten at Millmoor. But it was their poor away form which contributed to their lowly League position.

They have failed to win a single game on opponents' grounds, and that will be one of Hughes' priorities. Two weeks ago, they were leading Norman Hunter's Barnsley 2-1 at half-time but finally lost 4-2 at Millmoor in a game watched by over 18,000 fans.

Hughes will expect much from striker Ronnie Moore,





# POINTS ATTENDANCES LEAGUE TABLES

Opponents	Result	Attendance	Points	Position	Findlay	Stephens	Aizlewood	Horton	Saxby	Donaghy	Hill	Stein	White	Antic	Ingram	Turner	Moss	Fuccillo	Goodyear	Small	Aleksic	Own Goal
<b>Goals Scored</b>							3		1	4	2	4	11	1			8	1	1			1
<b>1981</b>																						
<b>August</b>																						
29 Charlton Athletic	3-0	8,776	3	—	1	2	3	4	5	6	7	8	9	10	11							OG
<b>September</b>																						
1 Queens Park Rangers	2-1	18,703	6	—	1	2	3	4	5	6	7	8	9	10	11							
5 Bolton Wanderers	2-1	6,911	9	1	1	2	3	4	5	6	7	8	9	10	11+					12		
12 Sheffield Wednesday	0-3	12,131	9	3	1	2	3	4	5	6	7	8	9	10	—	11+				12		
19 Leicester City	2-1	14,159	12	2	1	2	3	4	5	6	7	8	9	10	—	—	11					
22 Cardiff City	2-3	9,015	12	4	1	2	3	4	5	6	7	8	9	10	—	—	11	12				
26 Watford	4-1	12,839	15	2	1	2	3	4	5	6	7	8	9	—	—	—	11	10				
<b>October</b>																						
3 Orient	3-0	5,584	18	1	1	2	3	4	5	6	7	8	9	12	—	—	11	10				
6 Wrexham (LC2 - 1L)	0-2	6,146	—	—	1	2	12	4	5	6	7	8	9	3	—	—	11	10				
10 Oldham Athletic	1-1	8,403	19	1	1	2	3	4	5	6	7	8	9	12	—	—	11	10				
17 Grimsby Town	6-0	9,090	22	1	1	2	3	4	5	6	7	8	9	12	—	—	11	10				
24 Wrexham	2-0	4,069	25	1	1	2	—	4	5	6	7	8	9	—	—	—	11	10	3			
28 Wrexham LC2 - 2L)	1-0	3,453	—	—	1	2	—	4	5	6	7	8	9	—	12	—	11	10	3+			
31 Crystal Palace	1-0	11,712	28	1	1	2	—	4	5	6	7	8	9	12	—	—	11	10	3			
<b>November</b>																						
7 Derby County	3-2	10,784	31	1	1	2	3	4	—	6	7	8	9	—	—	—	11	10	5			
14 Blackburn Rovers	1-0	9,862	34	1	—	2	3	4	—	6	7	8	9	—	—	—	11	10	5	—	1	
21 Newcastle United (1)	2-3	21,031	34	1	—	2	3	4	—	6	7	8	9	—	—	—	11	10	5	—	1	
24 Bolton Wanderers	2-0	8,889	37	1	—	2	3	4	—	6	7	8	9	12	—	—	11	10	5	—	1+	
<b>December</b>																						
5 Shrewsbury Town																						
12 Chelsea (2)																						
19 Barnsley																						
26 Cambridge United																						
28 Norwich City																						

- ROTHERHAM THROUGH THE YEARS**
- Jim Lambert, a striker of the 20's, made his first three Football League appearances for Rotherham in 1922-23, for Leeds in 1923-24 and for Doncaster in 1924-25.
  - Rotherham lost 11-1 to Bradford City on August 25th 1928, yet remained unchanged for the next match. In the following March they lost 10-1 at South Shields and yet managed to end the season well clear of the re-election zone in Division Three (North).
  - Colin Hall scored four goals on his debut for Rotherham against Wigan Borough on November 5th 1927.
  - Irvine Rhodes became the only full back before the Second World War to score on his debut when he did so for Rotherham against Wigan Borough on November 5th 1927.
  - Wally Ardron made his first Football League appearance for Rotherham immediately before the Second World War and his second immediately afterwards. He netted four times against Carlisle on September 13th 1947, and hit four more against Hartlepool exactly a year later.
  - In 1949-50 Rotherham's first team was captained by Horace Williams, their second team by Danny Williams, their third team by Ken Williams and their fourth team by Bobby Williams. None of them was related.
  - In 1950-51 Jack Shaw scored five goals for Rotherham at Darlington in a first round FA Cup-tie and three more against Nottingham Forest in a second round tie.
  - Andrew Smailes went to Rotherham on a month's trial in August 1929. He stayed 29 years in all becoming trainer in 1933, manager in 1952 and finally leaving in 1958.
  - On September 8th 1973 Rotherham conceded an early goal in a Fourth Division game at Crewe, but hit back to win 8-1, six goals in the second half and Trevor Phillips getting a hat-trick.
  - Rotherham took 41 points from 46 Division Three games in 1972-73 but were still relegated. In 1946-47 they had dropped only one point all season in Division Three (North), but failed to gain promotion.

## HALF-TIMES

Blackburn v Norwich City

Charlton v Barnsley

Crystal Palace v Bolton

Derby County v Chelsea

Grimsby v Newcastle

Leicester v Cambridge Utd.

Q.P.R. v Cardiff City

Sheffield Wed. v Watford

Wrexham v Oldham

Arsenal v Everton

Aston Villa v Nott'm Forest

Coventry v Middlesbrough

Ipswich v Manchester City

Leeds v West Ham United

Liverpool v Southampton

Manchester Utd. v Brighton

Notts County v Tottenham

Sunderland v W.B.A.

Wolves v Stoke City

Portsmouth v Huddersfield

### MIDLAND YOUTH LEAGUE CUP COMPETITION

Group A	P	W	D	L	F	A	Pts
W.B.A.	8	5	2	1	14	12	12
Luton Town	7	3	2	2	14	9	8
Wolves	6	3	1	2	15	7	7
Bristol City	7	3	0	4	15	18	6
Peterborough	8	0	3	5	11	23	3

### FOOTBALL COMBINATION FIXTURES 1981-82

	F	A
Aug. 29 Orient	4-0	
Sept. 1 Tottenham Hotspur	1-0	
Sept. 5 Oxford United	2-1	
Sept. 12 Leicester City	1-1	
Sept. 19 Queens Park Rangers	2-0	
Sept. 26 Watford	0-5	
Oct. 3 Bristol City	1-1	
Oct. 10 Crystal Palace	4-0	
Oct. 17 Swindon Town	0-3	
Oct. 24 Ipswich Town	2-3	
Nov. 3 Hereford United	1-0	
Nov. 7 Arsenal	1-1	
Nov. 10 Norwich City	1-3	
Nov. 14 Fulham	2-2	
Nov. 17 Birmingham City	1-1	
Nov. 25 Tottenham Hotspur		
Nov. 28 Southampton		
Nov. 30 Chelsea		
Dec. 5 Chelsea		
Dec. 12 West Ham United		
Dec. 19 Bristol Rovers		
Dec. 28 Reading		
Jan. 2		
Jan. 9 Oxford United		
Jan. 11		
Jan. 16 Orient		
Jan. 23		
Jan. 30 Queens Park Rangers		
Feb. 1		
Feb. 6 Leicester City		
Feb. 8		
Feb. 13 Bristol City		
Feb. 20 Watford		
Feb. 27 Crystal Palace		
Mar. 6 Swindon Town		
Mar. 13 Ipswich Town		
Mar. 20 Plymouth Argyle		
Mar. 27 Arsenal		
April 3 Fulham		
April 10 Birmingham City		
April 12 Reading		
April 17 Hereford United		
April 24 Southampton		
April 27 Chelsea		
May 4 Norwich City		
May 8 West Ham United		
May 15 Bristol Rovers		
May 22		
To be arranged		
Plymouth Argyle (A)		

### AVERAGE ATTENDANCES

	Best	Average
Sheffield Wed.	26,826	19,726(7)
Newcastle Utd	21,037	16,768(8)
Barnsley	28,870	16,193(8)
Chelsea	20,036	15,545(8)
Leicester City	19,125	14,898(7)
Norwich City	14,484	13,518(8)
Q.P.R.	18,703	13,504(7)
Derby County	16,046	12,170(7)
Watford	14,463	11,495(8)
Crystal Palace	14,227	10,623(7)
Luton Town	12,839	10,621(7)
Grimsby Town	13,110	9,739(6)
Blackburn Rovers	15,050	9,582(7)
Rotherham United	18,324	9,307(8)
Charlton Athletic	11,133	7,453(7)
Bolton Wanderers	7,361	6,712(8)
Oldham Athletic	9,773	6,514(8)
Orient	9,698	6,154(7)
Cambridge United	8,806	5,675(8)
Cardiff City	8,898	5,555(8)
Shrewsbury Town	5,672	4,711(7)
Wrexham	4,795	3,981(7)

Up to and incl. Sat. 21st Nov. 1981



Today's Mitre Match Ball is sponsored by:

**MARTIN SMITH MOTORS**  
USED COMMERCIAL VEHICLE SALES  
280 MARSH ROAD, LUTON,  
BEDFORDSHIRE. TEL: 0582-54455

### DIVISION TWO TABLE 1981-82

	P	W	D	L	F	A	W	D	L	F	A	Pts
Luton Town	16	6	0	2	21	9	6	1	1	15	7	37
Watford	15	5	2	1	14	6	5	0	2	10	8	32
Barnsley	16	6	1	1	15	4	2	2	4	12	14	27
Q.P.R.	16	5	2	1	12	3	3	1	4	12	13	27
Oldham Athletic	16	4	4	0	12	5	3	2	3	10	11	27
Sheffield Wednesday	16	4	2	2	11	11	4	1	3	7	8	27
Chelsea	16	4	2	2	13	10	3	1	4	9	14	24
Norwich City	16	5	2	1	13	7	2	0	6	8	17	23
Newcastle United	16	6	1	1	15	5	1	0	7	7	13	22
Cambridge United	15	5	0	3	13	8	2	0	5	8	12	21
Blackburn Rovers	15	3	1	3	5	5	3	2	3	11	12	21
Shrewsbury Town	15	5	1	2	13	8	1	2	4	4	12	21
Cardiff City	16	4	1	3	12	14	2	2	4	9	12	21
Leicester City	15	2	3	2	5	5	3	2	3	14	12	20
Crystal Palace	15	5	0	3	11	7	1	2	4	2	5	20
Rotherham United	15	5	1	2	19	9	0	2	5	4	13	18
Charlton Athletic	16	5	0	3	17	12	0	3	5	6	16	18
Derby County	15	3	2	2	11	9	2	1	5	9	18	18
Grimsby Town	14	1	2	3	7	9	3	2	3	8	14	16
Wrexham	16	3	0	5	9	11	1	3	4	8	10	15
Orient	16	2	3	3	7	9	2	0	6	3	10	15
Bolton Wanderers	16	3	0	5	9	13	1	1	6	3	13	13

Up to and including Tuesday 24th November 1981

### FOOTBALL COMBINATION 1981/82

	P	W	D	L	F	A	Pts
Q.P.R.	16	12	1	3	37	15	25
Watford	15	9	5	1	28	15	23
Norwich City	14	10	2	2	34	13	22
Southampton	13	8	4	1	35	13	20
Ipswich Town	13	7	4	2	20	11	18
Plymouth Argyle	13	7	2	4	19	16	16
Luton Town	14	6	4	4	22	20	16
Fulham	12	4	4	4	15	13	12
Chelsea	11	4	4	3	15	16	12
Leicester City	15	3	6	6	19	26	12
Arsenal	14	3	6	5	14	21	12
Crystal Palace	14	6	0	8	14	26	12
West Ham United	14	5	1	8	30	22	11
Birmingham City	14	3	5	6	15	15	11
Swindon Town	13	4	3	6	24	26	11
Tottenham	10	4	2	4	11	12	10
Reading	10	2	5	3	10	17	9
Bristol City	14	3	3	8	16	26	9
Oxford United	13	3	2	8	18	25	8
Orient	12	2	3	7	11	23	7
Hereford United	11	2	2	7	9	22	6
Bristol Rovers	11	1	2	8	9	32	4

Up to and incl. Saturday 14th Nov. 1981

### DIV 2 HOT SHOTS

(including League Cup)

Moore (Rotherham)	11
White (Luton)	11
Aylott (Barnsley)	10
Banks (Barnsley)	10
Stainrod (Q.P.R.)	9
Stevens (Cardiff)	9
Atkins (Shrewsbury)	8
Fern (Rotherham)	8
Glavin (Barnsley)	8
Jack (Norwich)	8
Melrose (Leicester)	8
Varadi (Newcastle)	8
Walsh (Charlton)	8

Up to and incl. Sat. 21st Nov. 1981



# TODAYS TEAM CHECK

LUTON TOWN			ROTHERHAM UNITED	
MILIJA ALEKSIC	1		RAY MOUNTFORD	
KIRK STEPHENS	2		GERALD FORREST	
MARK AIZLEWOOD	3		ASHLEY TAYLOR	
BRIAN HORTON	4		MARK RHODES	
CLIVE GOODYEAR	5		PAUL STANCLIFFE	
MAL DONAGHY	6		JOHN GREEN	
RICKY HILL	7		TONY TOWNER	
BRIAN STEIN	8		MICK GOODING	
STEVE WHITE	9		RONNIE MOORE	
LIL FUCCILLO	10		RODNEY FERN	
DAVID MOSS	11		PHIL HENSON	
	12		JOHN SEASMAN	

Referee: J. E. BRAY, Hinckley, Leicestershire

Linesmen: M. J. COTTON (Red Flag)

G. CLARIDGE (Yellow Flag)



## TOKEN

# 10

Saturday  
28th November 1981  
ROTHERHAM UNITED



### IN CHARGE TODAY

BRAY, JEFF E. (Hinckley, Leicestershire). Began refereeing in local leagues in 1965. Progressed through the Football Combination to the Football League List in 1975. Thirteen years Secretary of local football league. Chairman of local Referees' Association. He refereed the 2nd leg of the FA Vase semi-final in 1977-78. Married with two children and is an Assistant Works Manager with a dry cleaning firm. His spare time is spent recruiting new referees and promoting local football.