

THE HATTER

Official Matchday Magazine Price 50p

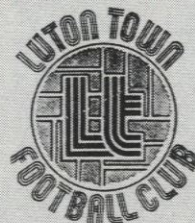
FOOTBALL LEAGUE DIVISION TWO
Tuesday 24th November 1981

LUTON TOWN v BOLTON WANDERERS

TONIGHT'S MATCH
IS SPONSORED BY:
SYDNEY C. BANKS LTD.
Grain and Seed Specialists



LUTON TOWN FC



70-72 Kenilworth Road

Luton

Tel: 411622

Season 1981-82

Chairman:

Denis Mortimer

Directors:

R. L. Banks, D. J. Evans
E. S. Pearson, H. Richardson
R. J. Smith, J. R. Yates
J. R. Smith (Chief Executive)
D. J. Pleat (Team Manager)

President:

T. Hodgson

Vice-Presidents:

J. A. C. Bain (Deputy President)
Lord Hill, Sir Reginald Pearson OBE,
A. J. Berry, J. B. Brent,
B. Cole, B. England,
N. S. Fookes, G. B. Holland,
C. Holloway, I. E. Holmes,
C. J. Hudson, R. Larkinson,
L. Leppington,
Eric Morecambe OBE, R. Safranek,
E. Waller, R. Unwin

Administration:

General Secretary:

Graham MacKrell

Club Secretary:

John Wilkinson

Project and Advertising Manager:

Mike Beevor

Commercial Manager:

Mike Hardwicke

Catering Manager:

Clive Hustwitt

Youth Development Officer:

Colin Ball

Travel Organiser:

Mrs C. Ball

Auditors:

Arthur, Young, McClelland,
Moore & Co.

Photographer:

Gareth Owen

Playing:

Coaches:

David Coates, John Moore and
Trevor Hartley

Physiotherapist:

John Sheridan

Doctor:

W. A. C. Berry MBBS

MATCH PREVIEW

This evening, we extend a warm welcome to Bolton Wanderers' manager George Mulhall and his experienced squad of players which includes Alan Gowling and former English international Brian Kidd.

It is our first home League match since we lost 3-2 to Cardiff City at Kenilworth Road back in September, and Bolton are certain to provide us with a tough tussle tonight.

On pages 3 and 19 you will find a special message from our chief executive John Smith who brings supporters up to date with the latest news on the A505 relief road.



ALAN GOWLING

Your magazine is also packed with other news and views from the Luton Town scene.

Our travel section is gaining momentum every week and travel organiser Catherine Ball reported an excellent following for our game at Newcastle last Saturday and at Blackburn the previous week.

You can read all about Luton Town travel on page 13.



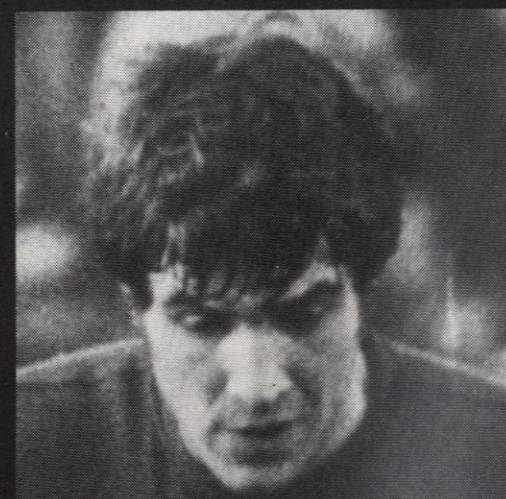
BRIAN KIDD

You can also catch up on the latest news from the reserve players on page 20, plus a complete run-down on tonight's opponents on pages 28 and 29.

Around the Town is slap in the middle of your magazine on pages 16 and 17 and manager David Pleat's home game diary can be found on page 4.

Tonight's big spotlight picture is on page 8 and Junior Hatters news appears on pages 10 and 11.

Finally, don't forget Saturday's attractive home game against Rotherham United when old Liverpool warhorse Emlyn Hughes brings his team to town.



EMLYN HUGHES

FROM THE CHIEF EXECUTIVE'S OFFICE

As regular LUTON TOWN supporters will know, the club has been actively engaged in the past few months in protecting its interests in face of the threat to its future as a result of the proposed A505 Luton-Dunstable relief road.

Matters have now reached a significant stage and so, as promised in my previous statements, I am now taking this opportunity of telling you where things now stand.

It will be recalled that this scheme is being promoted by the Bedfordshire County Council and the British Railways Board. British Rail is involved quite simply because the chosen route for the relief road is along the existing branch freight railway line which is to be diverted on to land in the occupation of the club lying between the existing line and the Main Stand.

It is therefore British Rail rather than the County Council who will be taking away the club's land although I understand the entire cost will be borne by the County Council.

As the scheme now stands, it will involve the loss of the Kenilworth Suite, the loss of the present means of access to the ground from the railway side, including therefore the existing entrances to the Kenilworth Suite and the Century Club, the loss of over half of our car parking space off Maple Road and the loss of most of our coach parking space off Hazlebury Crescent.

The scheme has also already made it impossible for the club to complete its overall programme of safety improvements to the ground, notably by preventing the creation of additional exits from the Main Stand and the construction of an

overhead walkway connecting the Kenilworth Road terrace, (the visitors end), with the visitors coach park off Hazlebury Crescent.

This, in turn, has made it impossible for the club to keep rival spectators apart with the result that we are still seeing crowd problems such as those at the match this season against Sheffield Wednesday and Crystal Palace.



JOHN SMITH

One further very regrettable side effect is the closure of the Hatters Community Play Area at the instance of British Rail who say they did not know about it and had not given their permission (as Landlords) for part of the parking land to be used in this way.

The play area was created by the club in 1978-79 with the aid of a substantial grant from the Sports Council. Until this year it was managed by Luton Borough Council and used extensively by schools and local residents for organised events such as five-a-side football and netball competitions. In the words of the Regional Director of the Sports

Council: 'It has already shown its value to young people of mixed races in a crowded area of Luton.'

With the help of the Sports Council, to whom we are greatly indebted, I have been trying over the past few months to persuade British Rail to allow the play area to be re-opened so that events such as the very popular and successful Evening Post Hatters Community Junior Netball League could be re-introduced.

In addition, the C and A League Cups, the Luton Town Five-a-Side Football Competition, and the Hatters' Junior Netball League, which have all had to be transferred elsewhere, could once again be run here at Kenilworth Road.

So far British Rail have persistently refused to give their permission but there is still time for them to change their minds and I hope they will do so in time for the play area to be re-opened and made available for use during the Christmas school holidays. A further announcement will be made as soon as we have any further news.

We believe that the road proposal and its effects on our existing facilities will lead to a downgrading of the club which could make it virtually impossible for the club to continue to function and to fulfill our ambitions at Kenilworth Road.

In other words, we believe the proposed road scheme puts our future in jeopardy and this at a time when the club is once again at the top of the Second Division with very real prospects of promotion to the First.

Consequently, the club has, at considerable expense, engaged a team of top lawyers and other ex-

Continued on page 19

DAVID'S DIARY

We were all delighted with the support we received at Blackburn and there can be no doubt that the players respond to this stimulation. Now more than ever, our crowd here must realise the value of getting their vocal chords exercised as we do our best to keep our performances good enough to win matches.

After the game at Ewood Park which was an excellent team display, we motored back to Luton bubbling with confidence. If we are to be successful this season, then our reserve strength will be tested. Clive Goodyear has been a constructive defender in recent weeks replacing Mick Saxby. Milija Aleksic we welcome on loan from Spurs, whilst we hope Jake Findlay's ankle injury will mean only a short period off duty.

Wayne Turner, one of the club's best young professionals, has been helping Lincoln City and I will maintain a policy of allowing young players out on loan to help their development. At Norwich recently, I was more than pleased with the way the reserves played. They showed a good appreciation of a smooth passing game through the field — performance counts if we are to achieve our goal and the youngsters must be encouraged to play with style.

A neighbour of mine recently shouted 'Keep it up and I shall be down next year.' My diplomacy prevented me from telling him what I thought of his remark. *NOW* is the time to support the club, through the turnstiles — not through the Press, local radio or the armchair. If we achieve our



dream, how can we consolidate the way the market is at present? *NOW* is the time to come to Kenilworth Road, to buy lottery tickets and back fund-raising schemes so we can buy to strengthen *NOW* if necessary, as a Second Division club; also to help alleviate the extra costs all round that the achievement of our dream could mean.

The players at Luton are genuine and skilful and are deserving of a considerable and appreciative audience. NO-ONE will be satisfied until we reach that big League. I hope that along the way we will gain a reputation that we have never previously enjoyed of having a crowd like Anfield lifting the players and winning together.

Today's opponents, Bolton, have experienced all the game's ups and downs in recent seasons. They have just begun to show their mettle with an easy win over Watford and tonight's game could be an exciting tussle.

See you soon.

DAVID PLEAT

We have always placed tremendous importance on our sponsors — and none more so than Terry Bailey who was responsible for our magnificent electronic scoreboard — the best in Europe.

Terry, managing director of the Flitwick-based Wallspan Bedrooms, is also president of Berger Isthmian League club Barton Rovers. He also sponsored our recent home game against Crystal Palace and is pictured with chief executive John Smith receiving a coloured picture of our team.



COLOUR
SHOT

IVOR HOLMES



LUTON 56622

R. W. UNWIN & CO LTD

Pharmaceutical and Fine Chemicals
and
Chemical Intermediates

Prospect Place
Welwyn, Herts
AL6 9EW

Tel: Welwyn 6441/2/3/4

FOR ALL YOUR BUILDING
AND DIY SUPPLIES GO TO

Graham Ford Ltd

Trading as Lockhart-Bennett

Willis-Dawson Ltd
Builders and Developers
Leighton Buzzard

Tel: Leighton Buzzard 372557

See how far your money goes when you travel with

TRAVEL CENTRE

Come in and get the best deal going
47 GEORGE STREET, LUTON
Tel: 421751

15a HIGH STREET NORTH, DUNSTABLE
Tel: 609677

J. F. MEADE LTD

Civil Engineering
Building Contractors
Plant Hire

14 Tennyson Road
Luton, Beds

Tel: 0582 287401/414759



Your Discount Choice

LUTON SPORTS PRESS LTD

THE LOTTERY TICKET SPECIALIST
Tel: Luton 28757

Discounts on all Tyres and Exhausts
at



Manor Road, Luton. Tel: 410410
122-124 Leagrave Road, Luton. Tel: 37835
162-170 High Street South, Dunstable. Tel: 69913

Cleandustrial Services Ltd

The Professional Approach to
Your Cleaning Problems
84 Aldermans Hill N13

PROGRAMME CORNER

By JOHN FARMER

Programmes of a 'one off' nature from great days in the history of clubs can be particularly valuable. One that comes into this category is the programme of the game in which Walsall and Bournemouth played in a Cup Final for the only time in their history.

This was the final of the Division Three (South) League Cup that was played in the last season of wartime football in May 1946.

The competition had been run on a league basis with the top clubs in each of the four sections contesting the semi-finals. Walsall had beaten Bristol Rovers and Bournemouth had beaten Q.P.R. to qualify for the final at Stamford Bridge. A great deal of interest seems to have been

aroused by this competition since there were over 17,000 at the final though travelling arrangements were difficult so soon after the war.

Chelsea issued a programme for this game similar to their normal publication of those days of paper restriction. It consisted of a single sheet folded to form four pages closely printed in blue. There were quite detailed notes on the two teams, however, both of them containing interesting names.

Walsall fielded Gilbert Alsop, who 13 years earlier had scored one of his side's goals in the remarkable FA Cup win over Arsenal. Both centre forwards, Bournemouth's Jack Kirkham and Walsall's Albert Mullard had returned from harrow-

ing spells in prisoner-of-war camps. Diminutive winger Johnny Hancock and inside forward Dennis Wilshaw were both destined to move from Walsall to Wolves and to win England caps.

The game itself seems to have been fairly undistinguished with a swirling shot from winger Jack McDonald winning the game for Bournemouth. Jack a former Wolves junior played for Fulham just after the war. One wonders whether more recent competitions such as this season's Group Cup and the projected Third Division Cup will attract as much interest in future years when programmes featuring them are rediscovered years after the event.

MEMBERS OF THE

KENILWORTH SUITE

BARRATT DEVELOPMENTS
(LUTON) LTD
PO BOX 5, BARRATT HOUSE
LUTON L42 7XJ
TEL: LUTON 422771

A. G. BERRY ESQ.
BRENGREEN HOLDINGS LTD
61 CHEAPSIDE, LONDON EC2V 6AX
TEL: 01-248 6026

AMERICAN-CAN (UK) LTD
WALTON ROAD, CALDECOTTE
BOW BRICKHILL
MILTON KEYNES MK7 8AE

B. COLE ESQ.
CLEANDUSTRIAL SERVICES LTD
PALMERS GREEN, LONDON N13
TEL: 01-882 4626

FILMERGRAPHIC ASSOCIATES
PHOTOTYPESETTING AND PRINTING
BAINSON HOUSE, ALTON ROAD
LUTON
TEL: LUTON 36407

FINE STAMPS LTD
BILTON WAY, LUTON
TEL: LUTON 36761

N. S. FOOKES ESQ.
N. S. FOOKES, ENGINEERING
SERVICES LTD
45 LATIMER ROAD, LUTON
TEL: LUTON 26139

MR E. FOUNTAIN
VAUXHALL MOTORS
LUTON

S. GOLBY, FREDK RAY LTD
STANBRIDGE ROAD
LEIGHTON BUZZARD
TEL: 372241

BRIAN E. HANDSCOMBE
(LIFE AND PENSIONS BROKER)
48 ALMA STREET, LUTON LU1 2PL
TEL: LUTON 425921/4

G. B. HOLLAND ESQ.
G. B. HOLLAND & CO. LTD
MOTHERWELL WAY, LONDON ROAD
WEST THURROCK, ESSEX

MR I. E. HOLMES
IVOR HOMES LTD
82-88 MARSH ROAD, LUTON
TEL: LUTON 56622

C. J. HUDSON ESQ.
E. W. HOLDINGS LTD
6 UNION ST., LUTON
TEL: LUTON 30511

RICHARD C. LARKINSON
(BALDOCK) LTD
TWENTY PENCE ROAD
COTTENHAM, CAMBS.

P. LAYCOCK, LUTON SPORTS PRESS
HAZELBURY CRESCENT, LUTON
TEL: LUTON 28757

MARK JAMES (SALVAGE) LTD
16 WEST STREET, DUNSTABLE
TEL: DUNSTABLE 605944

MARSHALLS OF LUTON
(BUILDERS) LTD
SARUM ROAD, LUTON
TEL: LUTON 597666/9

DR & MRS G. L. PLESTER
9 BRIARS CLOSE, NUNEATON
WARWICKSHIRE

A. HUNTER ESQ.
RAVENMERE LTD. ALLRIC HOUSE
21 FARLEY HILL, LUTON
TEL: LUTON 32640

RICHMOND ELECTRONICS
(MARKYATE) LTD
HICKS ROAD, MARKYATE, HERTS.
TEL: LUTON 840761

ROBINSON METAL (LUTON) LTD
CALEB CLOSE
464 DUNSTABLE ROAD, LUTON
TEL: LUTON 53866

R. S. SAFRANEK ESQ.
NEAHURST LTD, LONDON RD.
LOWER STONDON, HITCHIN
TEL: HITCHIN 94-813545

TRICENTROL CARS (LUTON) LTD
326-340 DUNSTABLE ROAD, LUTON
TEL: LUTON 31133

T. & H. TYRE SERVICES LTD
MANOR ROAD, LUTON
TEL: LUTON 27665

R. W. UNWIN ESQ.
R. W. UNWIN & CO. LTD
PROSPECT PLACE, WELWYN HERTS.
TEL: WELWYN 6441

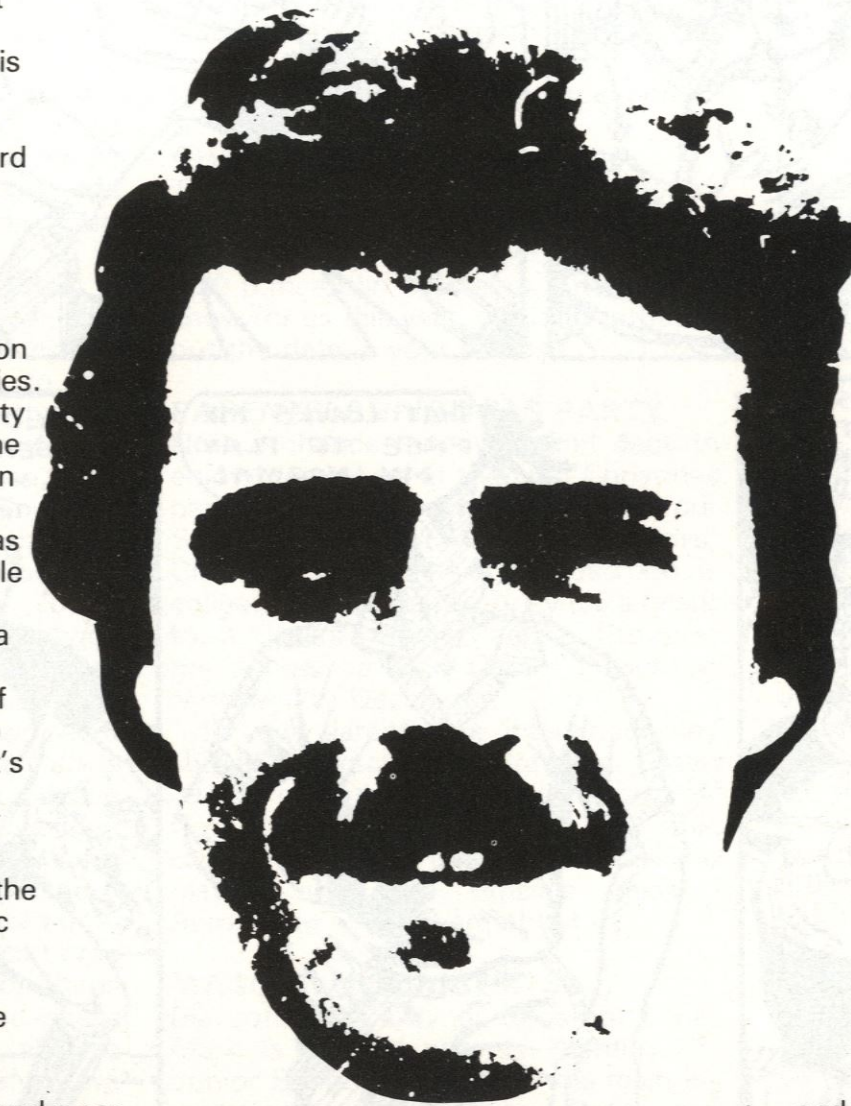
WALLSPAN BEDROOMS
INDUSTRIAL ESTATE
MAULDEN ROAD, FLITWICK, BEDS.
TEL: FLITWICK 3621

SPOTLIGHT



Ask any Junior Hatters' mascot and escort who their favourite Luton player is and the answer is invariably David Moss. Mossy joined us from Swindon Town for what was then a record fee of £110,000 and played 230 games for the Wiltshire club, scoring 60 goals. He's now approaching the 130 mark with Luton and was our second leading scorer last season with 16, including seven penalties. He looks like beating that penalty tally this season because the one he knocked in against Blackburn Rovers at Ewood Park recently was his fifth this season and was also enough to give us a valuable 1-0 victory. David was transferred to Tampa Bay Rowdies last May and rejoined us just after the start of this season. We asked David to answer the questions in tonight's Spotlight.

What were your impressions of living and playing in America?
 'It was fabulous. The club and the people over there were fantastic and everything was laid on to ensure we enjoyed ourselves. They really wanted me, my wife Yvonne and children Nikki and Kelly to feel at home. 'Tampa provided us with a flat and a car and even arranged for me to take my American



driving test to enable us to get out and about. There is no doubt American football will last despite reports that some clubs are in financial difficulties. 'When I finish my playing days in the English Football League, I think I would like to further my career on the other side of the Atlantic.'

What do you remember about your full Football League debut?

'It was one I'll never forget. It was in April 1972 in a home game against Watford. I didn't score, but I made the goals which gave us a 2-0 victory.'

Who was the best player you have played with or against?
 'No doubt about the answer to that one — George Best — the best. I played against him in America during the summer when he was with San Jose. He was in a poor team but still stood out a mile and I am convinced he still has the skill to have made a comeback over here.'

What is your biggest ambition?
 'Like every professional, I want to play in the First Division — and I am convinced I can do it with Luton Town. I think this season is the best opportunity I have had and, if we can manage to maintain our consistency, I think we have a hell of a chance.'

**SPOTLIGHT
ON
DAVID MOSS**

Complete fitted bedrooms // from around £450

Wallspan Bedrooms

**FREE DESIGN
FREE FITTING**

see the full range at

LUTON
Unit 174,
Bute Street,
Arndale Centre,
Luton, Beds.
Tel: Luton 23015

BEDFORD
59 Midland Road,
Bedford.
Tel: Bedford
211327

STEVENAGE
18 Market Place,
Stevenage, Herts.
Tel: Stevenage
724853

WATFORD
17/19 Queens Road,
Watford, Herts.
Tel: Watford
38388

"BOBBIN" DINO, LEATOWN'S FOREIGN STRIKER, HAD USED AN OPPONENTS GRUDGE TO CLEAR A PATH FOR ONE OF HIS TEAM-MATES TO GO FOR GOAL ... AND SCORE! LEATOWN 1 SHEDFORD 1.

HEAD FOR HEIGHTS!

EPISODE NINE

by Ray Aspden

CARLOS LOST HIS COOL AND LASHED OUT IN AN OFF THE BALL INCIDENT.

WITH BOTH CARLOS AND THE DEFENDER CLOSE MARKING YOU BOBBIN, THEY WERE WIDE OPEN!

THAT YOUNG UPSTART DARES TO MAKE A MONKEY OUT OF CARLOS!



BUT, IN THE HEAT OF HIS TEMPER, CARLOS HAD NOT TAKEN THE USUAL SAFEGUARD OF FOULING ON THE BLINDSIDE OF THE REFEREE ...

YOU'RE IN THE BOOK, NOW GET OFF THE FIELD.



THAT LEAVES ME FREE TO PLAY MY NORMAL GAME!



I'VE GOT THIS GUY BEATEN FOR PACE, WHICH GIVES ME THE BALL!



A ONE-TWO WITH HIS CAPTAIN GAVE BOBBIN A CHANCE FOR HIS FAVOURITE SHOT - THE BOBBIN NODD-IN!



WITH ONLY TEN MEN THEY CAN'T CLOSE US DOWN!

IT'S GONE IN, WE'RE 2-1 DOWN



WHEN THE TEAM LEFT THE PITCH THERE WAS NEWS FROM GUATADOR, WHICH WILL BE GIVEN IN THE NEXT EPISODE.

JUNIOR HATTERS



I am continually heartened by the tremendous help and support I receive from many adult supporters - our Junior Hatters' parents, teachers, businessmen and women, in fact people from all walks of life who are keen to help youngsters and who all have one thing in common - they love their football!

Their help gives our youngsters a chance to watch and enjoy real, live football. Much encouragement comes also from the many visitors to our Junior Hatters' Clubroom under the Oak Road end. They are always welcome and I am pleased to have a chance to tell them about our plans at Luton Town for youth in the future of our club.

Our Clubroom also provides us with an opportunity to meet other young supporters in football, for many League clubs, up and down the country, are encouraging the creation of junior supporters clubs. Here, at Luton, we see it as a way of ensuring that our club is supported by young people who behave in a proper and socially acceptable way, so the future of our great game is handed on to true and genuine supporters.

Our visitors tonight are supported by their Junior 'Whites'. At our last home game we welcomed the Junior Rams from Derby County and on our recent visit to Ewood Park we were able to meet Junior Rovers. Next Saturday we look forward to meeting the Rotherham junior supporters.

It all goes to show how important it is for youth to be encouraged to belong to and be a part of our club or any football club.

CAMERA DAY PHOTOS

All Junior Hatters who submitted entries for our Camera Day competition

may now collect their entries from the club offices at Kenilworth Road if you would like them back. Very many thanks for joining in the competition.

CHRISTMAS MEETING

The Junior Hatters' Christmas meeting will be held in the Hatters Club on Thursday 10th December, starting at 6.30 p.m. Colin Walker is putting on a show for us this year, so don't forget to put the date in your diaries!

PARENTS' CHRISTMAS PARTY

Now a chance for mums and dads to enjoy themselves at the club Christmas party. Pam Gray, who helps to run our Souvenir Shop in the Juniors' Clubroom beneath the Oak Road end, is collecting names and money (£6 a head) for a 'Junior Hatters Parents' Group at the annual party at Cesars Palace on Monday 7th December.

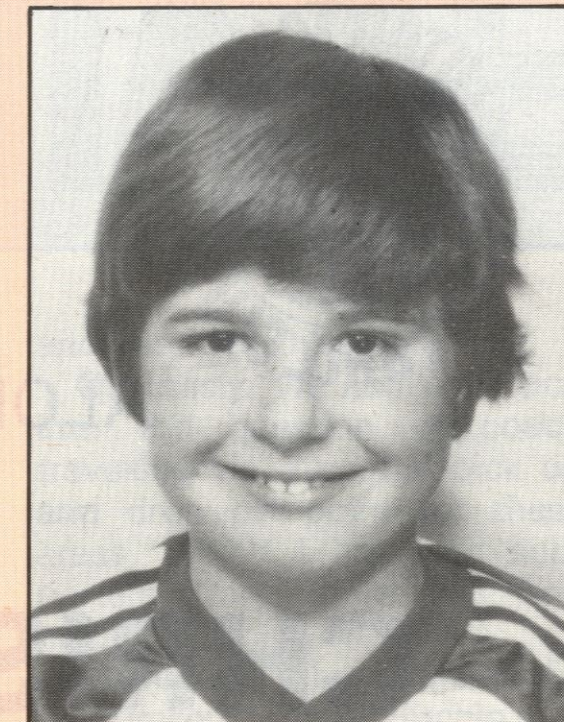
If your parents are interested they should contact Mrs Gray on Luton 391574 or Catherine Ball at the club offices (Luton 411622 ext. 27). This should be a great evening, with all the players and club officials present. Remember to tell them about it!

MASCOT AND ESCORTS

Mascot: Mark Day of Birdsfoot Lane. Mark is 10 and attends Warden Hill Junior School. Apart from his main interest of supporting Luton Town, and his favourite player, David Moss, his other hobbies are tropical fish and shooting.

Escorts: Lee Stevens, who is 10 and lives at Sunningdale, Luton. Lee attends Stopsley Junior School, is interested in all sports, and plays for Wigmore Athletic. His favourite player is also David Moss.

THE MASCOT ...



MARK DAY

Darren Ryder of Highfield Road, Leighton Buzzard. Darren is 9 and attends Mary Bassett School. Another fan of David Moss, his main interest apart from football is reading.

Oliver Conway, of Crawley Road, Luton. Aged 7½, Oliver attends St Josephs Junior School, and is interested in football and rugby. His favourite Luton player is Jake Findlay.

James Saunders, of Horsham Close, Luton, is 8 and attends Someries Junior School. His favourite Luton player is also Jake Findlay, and as well as football, he is interested in ornithology and music.

I mentioned in the Crystal Palace programme that I hoped to arrange for a party of Junior Hatters to visit the pantomime Jack and the Beanstalk which is being staged at Luton College, Park Square, from Tuesday 5th January until Saturday 9th January by the Luton Light Opera Company. Friday 8th January, was the evening I had picked for our party but so far there have been very few enquiries. This is one more appeal, if there are insufficient after this, I shall assume no interest.

Colin Ball
Youth Development Officer

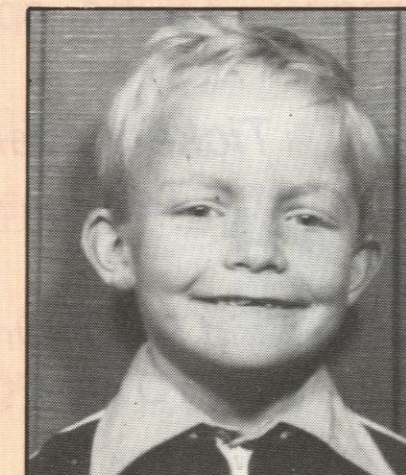
... AND THE ESCORTS



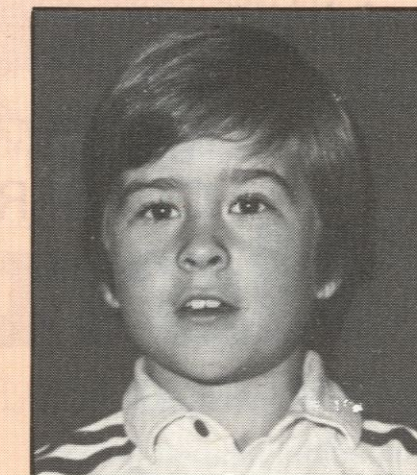
LEE STEVENS



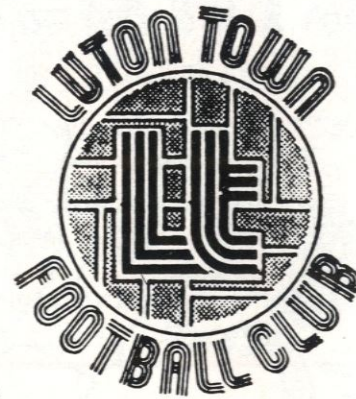
DARREN RYDER



OLIVER CONWAY



JAMES SAUNDERS



JOIN THE FUN
ALONGSIDE THE PLAYERS
AT OUR

CHRISTMAS PARTY

AT

CESAR'S PALACE
Monday 7th December

CABARET

starring TONY CHRISTIE *with* VALENTINE
& FULL SUPPORTING SHOW

Doors open: 8.00 p.m. till 2.00 a.m.

Admission:

£10 inc. a la carte menu • £6 inc. special set menu • £3 admision only

Tickets available from

CATHERINE BALL Tel: Luton Town FC Luton 411622

Cheques and Postal Orders made payable to
LUTON TOWN FOOTBALL CLUB

TRAVEL TIME

News this week of another additional service for home games. Beginning on Saturday next, 28th November, with our game against Rotherham United, we shall have a service from Bedford, using Drapers Coaches. Timetable and pick up points as follows:

- 13.15 — De Parys Avenue, Bedford
- 13.30 — Flying Horse, Clophill
- 13.35 — The George Hotel, Silsoe
- 13.45 — The School, Barton
- 13.50 — The Chequers, Streatley

Drop off point will be Kenilworth Road, and the coach will depart from there immediately after the game, when all passengers have boarded. Fares £1.50 adults, £1 juveniles (up to and including 15 years) return.

The 'in' coaches are attracting more supporters each game — pass the word among your friends — we can easily add ad-

ditional coaches as required.

I have recently received a letter from Mr S. E. Love, who lives at 41 Talbot Street, Hertford. He wonders if there is anyone in the Hertford area who will give him a lift to home games? Until recently, Mr Love came with a friend who sadly died suddenly. Mr Love is a Senior Citizen, but is willing to share car expenses. Any good supporter who can help Mr Love? Please ring me (Luton 411622 ext. 27) or contact Mr Love direct.

The response to the Blackburn game was tremendous. We had five coaches, and beat our Wrexham total, and as I write these notes, bookings are coming in fast for Newcastle.

I was able to arrange a coach to start from Stone and Aylesbury, with the help of courier Graham Snookes, and checking through the names of supporters who travelled to Blackburn I find an increasing number from Hitchin, Welwyn

and Letchworth areas.

Obviously, we can now look into the question of coach travelling via a central pick up and drop off point for these areas, which I am sure supporters from there will find helpful.

My request for couriers for the 'in' run covering the Hitchin area has at last, borne fruit, and my thanks to the gentlemen who have expressed their willingness to help. In order to get away coaches organised, I do require a contact who would be prepared to collect names to ensure we have enough passengers to warrant a coach. There are several names which keep recurring on away lists — would one of you like to ring me?

Full details of Shrewsbury coaches for 5th December will appear in Saturday's programme — but book your seats early.

Catherine Ball
Travel Organiser

Building houses to make homes in
at

Warden Hill, Luton
Parkside, Houghton Regis
Two Mile Ash, Milton Keynes
Church Green, Bletchley
Kimbolton Gardens, Bedford.



Barratt

Telephone: Luton (0582) 422771

FLASHBACK

A look at Luton Town
a decade ago
By BRIAN SWAIN
Sports Editor, Luton News

Complaints about referees . . . disputed goals . . . denials of transfer bids . . . and worries about how plans for new roads might affect a part of Luton were very dear to the hearts of some of us.

If it sounds like today's Kenilworth Road scene, that summary of some of the major sporting items in the local Press of November 1971 shows how little things change.

And perhaps this column tonight should be edged in deepest black, because it also has to record a rare but unwelcome defeat for Luton Town at Watford.

It was a shock for all sorts of reasons. Watford had won the Division Three Championship in 1969, a year before the Hatters got promotion, but as we prepared to go to Vicarage Road for the game on 13th November 1971, we confidently expected success.

Watford had finished 19th in their first season in the Second Division — only two points above Aston Villa, who were relegated — and 18th the year after.

Luton had completed the double the previous season, beating Watford 1-0 each time, and although the autumn of 1971 was a bleak spell for Town fans, Watford was confidently predicted as the turning point. They were bottom of the table, and in fact destined to sink back to the Third Division a few months later.

Manager Ken Furphy had just left to take over at Blackburn, and George Kirby was rebuilding the side. Even Luton supporters doubted the wisdom of some of Watford's changes in the summer of 1971 when they let Stewart Scullion and Tony Currie leave for Sheffield United.

Mind you, we didn't have a lot to crow about before the Watford match. The Town had gone seven games without a victory, and had scored only four goals in that spell.

And when your luck's down, you really suffer, as Town supporters in the

Vicarage Road crowd of 14,500 might remember. Vic Halom put the Town ahead in the 12th minute from a pass by Viv Busby, and in the 30th minute Peter Anderson netted from a corner by Gordon Hindson.

But the referee ruled the effort out, giving a foul against Halom, and two minutes later, in Watford's first real attack, Keith Eddy headed the equaliser from a free-kick by Tom Walley.

Disaster struck in the 68th minute when Colin Franks received a pass on the left-wing. He was so far offside that everyone stood still to wait for the whistle. Everyone, that is, except Franks. The linesman waved him on and he helped himself to a gift goal with no opposition at all. 'Diabolical,' said Town boss Alec Stock. 'If I made a blunder like that I'd pack up football.'

And Watford boss Kirby confessed that he thought his match-winner was at least 10 yards offside before he scored.

The referee that day was Pat Partridge. We gave him the bird before slinking back to Luton with Watford taunts ringing in our ears.

One of the watchers at that match was a scout from Aston Villa, who were then in process of working their way from the Third Division to a League Championship in 10 years. They were among many casting envious eyes on the Town's giant 24-year-old centre-half Chris Nicholl.

Villa and Luton Town both issued public denials of any possible transfer bids or talks. 'We haven't asked,' said Villa boss Vic Crowe. 'We're not selling,' said Stock. Guess what happened a few months later!

And Luton Town might well have wished they could guess future events 10 years ago this week when a newly-formed residents association in Dallow Road recorded a victory for local democracy. The county council wanted to build a new road between Luton and Dunstable, by widening Dallow Road.

Residents fought hard to save 200 homes threatened with demolition. Ten years ago this week they won the day. And it's one of the reasons council planners are still looking at lines on maps, including the one which is costing Luton Town thousands of pounds to fight in the effort to save the railway land behind the Main Stand. I wonder if it will still be a line on a map in another 10 years.



ALEC STOCK

LUTON

Wallspan
Bedrooms

Showrooms throughout
London and Home Counties
SEE US IN
LUTON ARNDAL CENTRE 23015

SCORE
WITH
HATTERS
BINGO.

Wallspan
Bedrooms

FITTED BEDROOM FURNITURE
SEE US IN
Yellow Pages

Anyone coming to Kenilworth Road these days could be forgiven for thinking that Christmas has arrived early with all the super prizes we are offering on our Wallspan Games.

As we have said earlier, and proudly repeated, we want you, our supporters, to enjoy the very best in entertainment.

Recent weeks have seen Mr Grant of Dunstable, Mr Salmon of Flitwick, Mr P. Deason of Cranfield, Mr Kucie of Royston and Mr S. Lindsay, Mrs Large and Mrs McAlinney, all from Luton, participating in Take Your Pick and we offer our special congratulations to winners Mr R. Salmon (Meal for four at McDonalds), Mrs McAlinney (Luton Town Pullover), Mr Kucie (£10 voucher for our Souvenir Shop).

Congratulations are also offered to Bingo Winner Mr Butt of Luton and to Miss Collins of Knebworth, both of whom received a £10 voucher for our Souvenir Shop.

We are still awaiting a claim for the Star Prize at the Crystal Palace match of a £400 holiday voucher with Silvair Holidays. Please re-check your Crystal Palace Bingo Card.

The winning numbers are: 45; 82; 7; 58; 35; 64; 41; 23; 19; 71.



• Take Your Pick winners show their prizes before the Derby game.

CROSSWORD

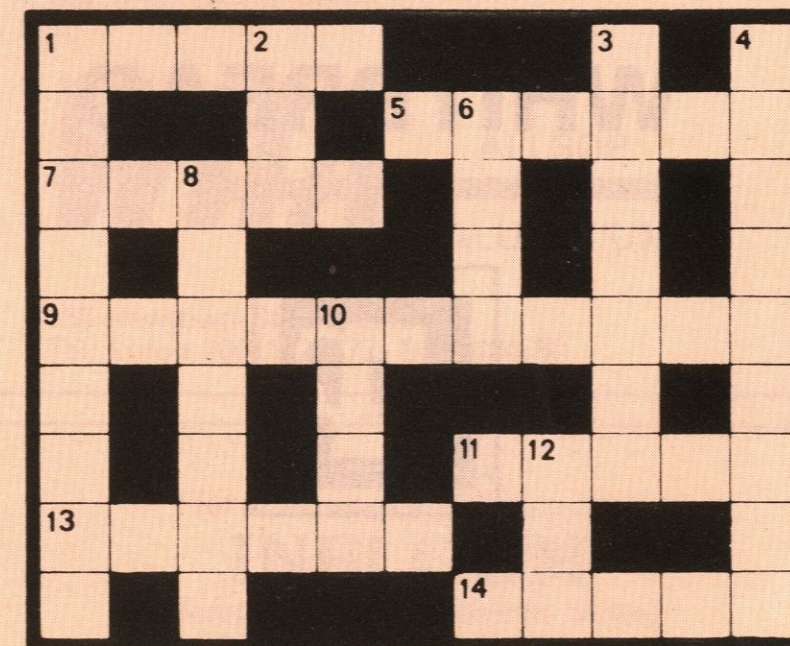
CLUES — Across:

1. Keeper who established a club appearances record for Reading last season (5); 5. What, colloquially, unhappy soccer players are as sick as (6); 7&11ac. Number One in One in eighty-one . . . (5,5); 9. . . their former player who was a League ever-present for Plymouth last season (11); 11. See 7 across; 13. Darryl . . . , referee (6); 14. The first . . . League game (Football League v Football Alliance) was played at Sheffield in 1891 (5).

CLUES — Down:

1. AFC Bournemouth's base (4,5); 2. Total number of League away wins mustered between them last season by . . . (3); 3. . . City and Rovers (7); 4. Side sited at Stair Park (9); 6. Hawley or Hill (4); 8. Atmospheric name of the former NASL side of San Antonio (7); 10. A referees 'authority' . . . and powers granted to him by the Laws of the . . . commence as soon as he enters the field of play (Law V) (4); 12. Moores, maybe (3).

• Check your answers with the solutions on Statistics page.



AROUND THE TOWN

JOIN US AT THE PALACE

Are you joining us at the Palace for a super pre-Christmas party? You'll be sorry if you don't.

Last year, our fans had a great evening out when they mingled with the players, manager, coaches, senior staff and directors. And this year, we're planning a repeat.

Prices have been structured to cater for everyone and we think they represent extremely good value for money. If you want an a la carte menu meal, admission and your fine dinner costs only £10. If you want a set meal, that costs £6. Admission only costs £3.

The party has been arranged for Cesars Palace on Monday 7th December, when singer Tony Christie provides the sparkling cabaret. He is supported by Valentine.

The doors at Cesars Palace will swing open at 8 p.m. and will not close until 2 a.m. Send your applications for tickets NOW to Catherine Ball, Luton Town FC, Kenilworth Road, Luton. Cheques and postal orders should be made out to Luton Town FC.

See you there . . . don't be late.

SUPPORTERS' DRAW

Before tonight's kick-off, the Luton Bobbers Stand and Supporters Club (Bletchley Branch) will hold their annual draw on the pitch. They support the club in terms of financial assistance and we know you would want to thank them for the valuable help they give us.

STEP OUT OF THE WILDERNESS

Two young lads are beginning to spread the gospel about Luton's ability to play good football.

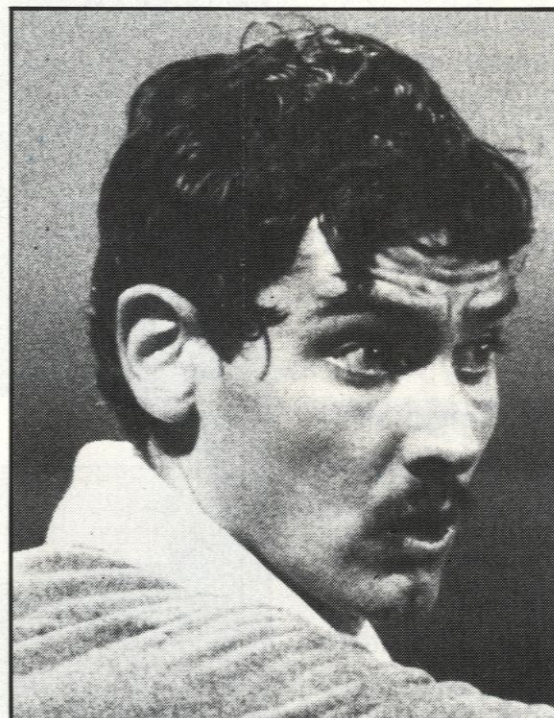
Manager David Pleat has received a letter

from Edward Loughnane, who lives in North Wales. He and his brother are enjoying successful attempts to convert several Welshmen into watching the Town and 14 of them travelled to Bolton and nine to Oldham earlier in the season to watch us in action.

They complain that the northern editions of the daily papers never carry previews or match reports of our games. Nice one, Edward!

THE LOAN PLAYERS

It was nice to see Wayne Turner, currently on loan at Lincoln City, score in their League Cup-



MILIJA ALEKSIC

tie at Watford which helped them to a replay on Sincel Bank.

Wayne tells us he is enjoying the hospitality at Lincoln — and also the opportunity of playing regular first team football.

On the subject of loan players, manager David Pleat was extremely fortunate to secure the services of our former keeper Milija Aleksic who joined us for a month from Spurs on loan.

The manager made an emergency approach for Aleksic when Jake Findlay twisted an ankle in training. His deputy, Alan Judge, was still recovering from a knee injury when Spurs allowed Milija to join us.

Milija had not played in Tottenham's first team since winning an FA Cup medal at the end of last season and, like Wayne, wanted regular first team football. We don't know, at the time of writing whether Milija will play tonight — but we welcome him back.

FRIENDLY DATE

Luton have agreed to send a team to Eynesbury on 30th November for a match to commemorate the official switching on of the United Counties League club's floodlights.

Manager David Pleat always attempts to foster the Town public relations exercises after sending teams to Barton and Arlesey last season.

'These games also give me the opportunity of allowing my lads to keep playing together,' he said. 'It could be a case of practice makes perfect and, if time permits, I have no objection to playing friendly games against local sides unless they want to take advantage of us or their hospitality isn't too good.'



You will have read in the local Press that one of the reasons for an increased loss in the last financial year was the cost of improving our stadium under the Safety of Sports Ground Act.

We had to spend heavily to bring our ground up to the required standards — but were fortunate to receive the help of the Football

Grounds Improvement Trust (FGIT).

Luton Town spent a total of £380,000 on safety work at Kenilworth Road but the FGIT provided us with a grant of £185,106 towards the cost of the work.

All the money from the Trust comes from a voluntary donation by Britain's three pools companies, Zetters, Littlewoods and Vernons

from their Spotting the Ball competitions.

Pictured presenting the cheque before our game against Crystal Palace Stanley Taylor (FGIT), Luton West MP John Carlisle, Luton Town chairman Denis Mortimer and Lord Hill of Luton, a former chairman of the BBC and keen Luton supporter.

WHITBREAD



TROPHY BITTER



Your Local Tour Operator
Book now for your Summer Holiday
Brochures available from:
Silvair Holidays Ltd
Silvair House
13-15 King Street, Luton
Tel: 412131

For ALL your Window
and Door requirements

WHA

ALLSOP
ALUMINIUM

153 Newtown Street, Luton
Tel: Luton 20011/23472. Eves 424650

For all your
Floral arrangements contact:
INBLOOM
(Suppliers to Kenilworth Suite)
45 Latimer Road, Luton

**TONIGHT'S MATCH
IS
SPONSORED
BY**

SIDNEY E. BANKS LTD.

SERVING AGRICULTURE

SANDY (0767) 80351

FROM THE CHIEF EXECUTIVE'S OFFICE

Continued from page 3

perts to look after its interests. On their advice the club objected in Parliament to the British Railways Bill by which British Rail sought power to take away the club's land and premises without any further opportunity for the club to voice its objection, and I would like to pay tribute once again to the member of Parliament for Luton West, Mr John Carlisle, for his support and interest in this matter.

The club's objection led to negotiations with the County Council which are now at a delicate stage and on which detailed comment would therefore be inappropriate. I can, however, tell you that proposals are now under consideration which, if implemented, would meet most, if not all, of the problems brought about by the proposed road scheme.

If these proposals are to succeed, however, we shall need to reach agreement with the County Council, Luton Borough Council and British Rail, to know just when these proposals would be carried out and how they would be financed. The cost is substantial and may turn out to be beyond the County Council's budget for the road scheme. Quite clearly therefore there is a long way to go before it can safely be said that our future is secure.

As already mentioned, one essential element is still missing from our overall safety strategy and that is an effective means of keeping rival supporters apart, particularly at the end of the game. In my view, it is totally undesirable to hold back spectators as the police do as present — this just builds up antagonism and contributes to an unsatisfactory environment.

Without a walkway from the Kenilworth Road terrace to the coach park this problem will continue to be with us causing an unnecessary burden on the police and a constant strain and worry to ourselves. We could possibly build a very long and elevated walkway behind the houses in Hazlebury Crescent and we now have consent from the Council, but not as yet British Rail, to do so, but we have reservations about such a long, narrow tunnel with no means of escape except at either end.

It would also be very expensive and we are therefore looking into



the possibility of a shorter walkway which could be brought into use fairly soon and still be available, suitably adapted and extended, were the coach park land to be reduced, and here again a further announcement will be made as soon as we have any more positive news.

In the end it may prove impossible for the relief road to be built and for the club to remain here at Kenilworth Road. In that event we would obviously need to relocate elsewhere and this possibility is now the subject of discussions between the club and the authorities concerned.

We are greatly encouraged by the talks now taking place but there are many hurdles to be overcome, not least of which is just how these works are to be financed. It may prove impossible for us to reach agreement over these matters and we are a long way apart at present.

Nevertheless, in view of the assurances which the club sought and received from the County Council and British Rail, and in order to save cost and to avoid the potential animosity of a contested hearing in Parliament, we have decided not to pursue our objection at the current time, and we hope that the County Council and British Rail will respond accordingly.

We may, of course, fail to reach a suitable measure of agreement in which case the club will have to take its case to the Courts in order to protect its interests and its future. If that proves to be necessary then we shall not shirk from doing so.

The road proposal has been put back to 1985 for reasons entirely unconnected with the club. There is therefore ample time for our negotiations to continue without causing any further delay in the overall road programme.

With goodwill and co-operation on both sides we all hope and trust that a negotiated solution will be found in good time on the one hand to allow this much needed relief road to be built, and on the other hand to allow the club to continue in existence, to foster and improve its relationships and its facilities, and to protect its future, whether that be here at Kenilworth Road or elsewhere.

JOHN SMITH
Chief Executive

IN RESERVE

LUTON TOWN 1 HEREFORD UNITED 0

Playing an attacking 4-2-4 formation against a patchwork Hereford team, our fans could have been expecting an avalanche of goals. But it wasn't to be.

Too many individual performances from our lads, plus the Hereford team adopting man to man marking made it very difficult for us. The highlight of the match was the only goal scored by Neil Madden and he beat the keeper with a well struck shot from the edge of the area.

The second half produced many chances, but a strangely ineffective forward line failed to produce the goals.

Team: Judge, Mitchell, Thomas, Heath, Antic, Aizlewood, Johnson, Madden, Ingram, Small, Valvee. *Sub:* Bunn.

ARSENAL 1 LUTON TOWN 1

The Gunners gave Luton an early shock by taking the lead after only five minutes in this encounter at Highbury. But the first period was fairly even with the young Hatters getting into their stride after the break.

Mick Small deservedly levelled the score with a powerful header after Seamus Heath had shown excellent foraging in attack. Ari Valvee — our Finnish trialist — Godfrey Ingram and Frank Bunn all kept keeper George Wood busy and a good performance enabled us to record a determined draw.

Team: Judge, Mitchell, Thomas, Heath, Breaker, North, Johnson, Bunn, Ingram, Small, Madden, Valvee. *Sub:* Brammer.

IPSWICH 3 LUTON TOWN 2

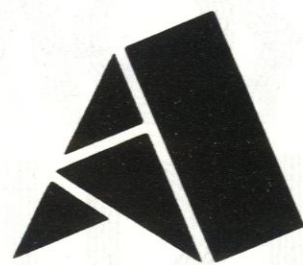
With the Town fielding a very young defence, Ipswich took full advantage of our nervous start and, within 20 minutes, had built a two-goal lead.

Luton came out like Tigers in the second period, causing veteran Ipswich keeper John Jackson many anxious moments. Eventually, Mick Small picked up a through ball rounded Jackson, and pushed the ball into the net to give us some hope of saving the game.

Godfrey Ingram then broke to equalise with a tremendous shot but Ipswich sneaked the winner following good play from Alan Brazil.

Team: Beasley, Mitchell, Thomas, Heath, Breaker, North, Owen, Madden, Ingram, Small, Turner, Keys. *Sub:* Brammer.

SEAMUS HEATH



American Can (UK) Ltd

MANUFACTURERS
AND SUPPLIERS OF
HIGH QUALITY FOOD
AND DRINK CANS
THROUGHOUT THE
WORLD

PROMOTE YOUR
COMPANY WITH
LUTON TOWN F.C.

ADVERTISING
FROM £50

SPONSORSHIP
FROM £125

For further details contact:
MIKE BEEVOR
on Luton 415978

JOHN'S JOURNAL



These past few weeks have brought back a few memories for me. At our match with Derby County we had Bob Morton here to open the new Season Ticket Holders' Bar, which has been named after him.

I know Bob was delighted to think the club still thought so much of him and wanted to recognise his service to the club. Also here that day to watch Bob perform the ceremony was Wally Shanks and former physiotherapist Frank King. Wally now runs a newspaper and confectionery shop opposite the Luton and Dunstable Hospital, whilst Frank has his own chiropody practice just across the road from Wally.

On the Wednesday before the Derby County match, I gave Frank

a tour of the ground and that was the first time he has been behind the scenes since he left the club in 1964. John Sheridan, our present physiotherapist, and Frank, had a very interesting chat about present day injuries and with the technical jargon they were using, left me well behind. Still I know it brought back a lot of memories for him.

Wednesday 10th November saw the reserves at Norwich City playing a Football Combination fixture. I was sitting at home having a meal when I received a telephone call from the club, saying they had left the players' boots behind and could I get them there on time?

I got ready, drove to the club to collect the skip, eating the best of my dinner en route, and started out

along with my son Neil and George Rogers our kit man. I listened to the 6 o'clock news on the radio sitting in a traffic queue at Royston, but at 7.10 I pulled up outside the Norwich City ground, so you can see, I didn't hang about.

Incidentally, I met Bernard Streten, our former international goalkeeper, at the game and he sends his regards to all his friends in Luton. As you can imagine, once I got my breath back, we had a good chat about the past.

John Wilkinson
Secretary



The wheels
for
British
industry
DAF Trucks

HENLYS

first for

TALBOT-PEUGEOT

Luton Way, Dunstable, Beds.
Telephone: 64171.

LUTON TOWN PLAYERS
DRINK



MILK

For your nearest depot
ring Luton 23580

CENTURY CLUB

'Hallow'een games', and at least one ending up somewhat wet! Thanks to those who came, and to the players and wives, and friends who joined us.

We have changed the date of the 'Punch up and Cheese' — we had inadvertently clashed with the England-Hungary international — and instead, it will be held on Wednesday 2nd December. There will still be time to order your Christmas wine.

May we say a very sincere thank you to those members and friends who have brought us raffle prizes recently — we are most grateful to the response so far. Tickets for our Grand Raffle will be available soon, and any contribution of prizes will be welcome. This year, the lucky first prize winner will have a weekend in Paris and we expect a sell-out of tickets.

It seems a long time since we watched a home game, and here we are with two in one week. Since these notes were written before either were played, let's hope we did well! Tonight, we welcome Bolton Wanderers, and are looking forward to a good evening's entertainment.

Our Hallow'een party was enjoyable, with guests taking part in some traditional

MATCH SPONSOR

but also export considerable quantities to Europe and the Third World countries.

They also specialise in the production of high quality seeds and are able to monitor the progress of growing techniques through trial grounds in Bedfordshire, Yorkshire and Norfolk.

Chemical and fertiliser sales play an ever increasing part in their business. They continue to serve the farming community well — as they have done over the last 50 years. Richard Banks, one of the company's directors, is also on the Board of Luton Town Football Club.

We hope the company, and their guests, enjoy tonight's game.

Our game this evening is sponsored by Sydney C. Banks Ltd., grain and seed specialists. The company has its head office in Sandy with depots at Cambridge, Bury St Edmunds and King's Lynn.

Sydney C. Banks are not only the leading figures in the United Kingdom grain market

IN RETROSPECT

LUTON TOWN v BOLTON WANDERERS

Division Two:		
1899-1900	0-2(h)	0-3(a)
Division One		
1955-56	0-0(h)	0-4(a)
1956-57	1-0(h)	2-2(a)
1957-58	1-0(h)	2-1(a)
1958-59	0-0(h)	2-4(a)
1959-60	2-2(h)	0-0(a)
Division Two:		
1970-71 Luton Town 2 (Nicholl, Givens) Bolton 0		
Bolton 4 (Wharton 3, 2 pens., Greaves) Luton Town 2		
(Keen, Macdonald pen).		

1973-74 Luton Town 2 Jimmy Ryan pen., McAllister o.g.) Bolton 1 (Whatmore). Bolton 1 (Greaves) Luton Town 0.

1975-76 Luton Town 0 Bolton 2 (Futcher. P. o.g., Curran) Bolton 3 (Jones, G., Byrom, Allardyce) Luton Town 0.

1976-77 Luton Town 1 (Geddis) Bolton 1 (Reid) Bolton 2 (Whatmore, Greaves) Luton Town 1 (Fuccillo).

1977-78 Luton Town 2 (West, Boersma) Bolton 1 (Jones. P.). Bolton 2 (Morgan, Worthington) Luton Town 1 (Futcher. R.).

1980-81 Luton Town 2 (Hill, Stein) Bolton 2 (Whatmore 2) Bolton 0 Luton Town 3 (Stein, White, Stephens).

Teams for last game here, November 29th 1980:
LUTON: Findlay, Stephens, Donaghy, Grealish (West), Saxby, Price, Hill, Stein, White, Aizlewood, Moss.

BOLTON: Poole, Graham, McElhinney, Wilson, Jones, Walsh, Nicholson, Whatmore, Hoggan, Kidd, Gowling. Attendance: 8,300.



PERSONALITY PROFILE



One fan's personal view of some of the great names of Luton Town By BRIAN SWAIN

When this column made its debut at the start of the season, I thought it might perhaps run to about a dozen articles. It tended to concentrate on the men who played in the promotion-winning team of the early 1950s, the side I watched and loved through my teens.

Response from supporters has been friendly and full of good advice, so thanks to all who have added their own nominations for inclusions in future issues.

And I am indebted to several correspondents for the suggestion that perhaps one of the most exciting times to follow Luton Town was soon after the club reached the depths of football, in the late sixties.

Fourth Division soccer may be a bit basic and raw, but a lot of supporters look back with real pleasure to the days which saw the rise of Luton Town from football's basement to the top flight.

'It might not have been full of great players, but it was a great team,' is the general view of a lot of fans who watched the Town when they won the Fourth Division Championship in 1968.

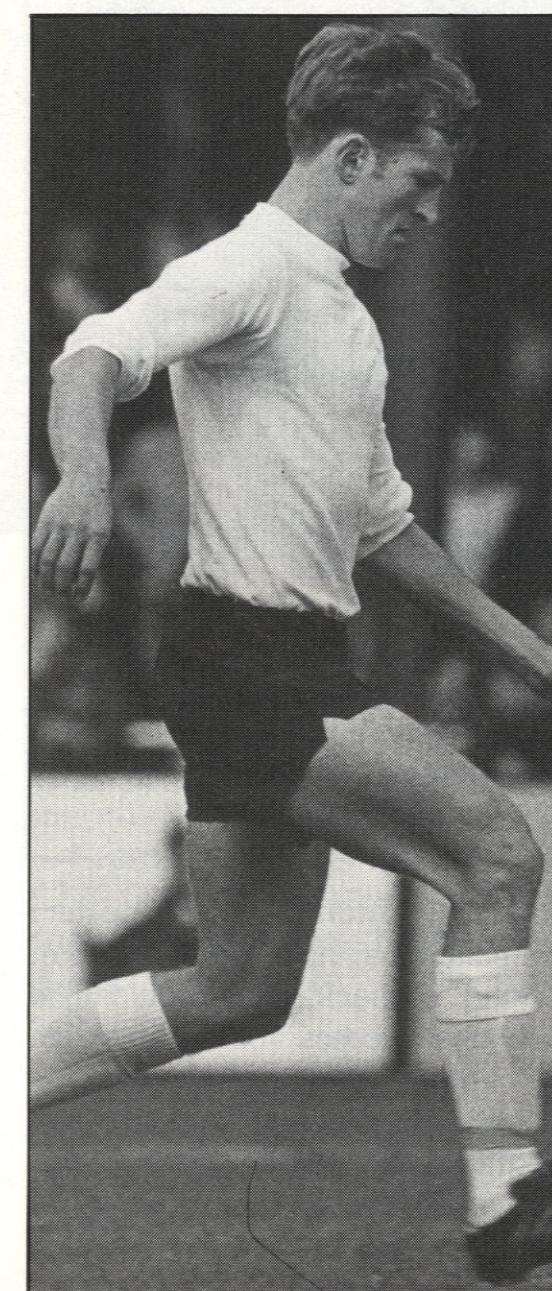
And at Kenilworth Road today there is just one survivor

from that squad still working hard for Luton Town — John Moore, now coach in charge of the younger players.

He has been one of the club's unsung heroes, and will doubtless squirm with embarrassment at being singled out for special mention.

Players weren't exactly fighting to sign for Luton when John arrived on a free transfer

JOHN MOORE



from Motherwell in 1965. Luton Town had just been relegated to the Fourth Division, morale was low and the fans were starting to turn their backs on the club.

But John Moore became one of the few players to stick with the club through the next difficult spell, and in the 1967-68 promotion season his partnership with Terry Branston at the heart of the Town defence was a vital part of the successful team.

He played with an air of detached calmness and reliability, and helped the club until the First Division was in sight, keeping his place through the Third Division and up into the Second.

He stayed for nine years in which he made 272 League appearances for the Hatters, and we won't see many players match that sort of record.

He moved on to Northampton for a while, then had a spell as manager of Dunstable Town in the Southern League.

David Pleat, once a teammate with Moore 16 years ago, brought him back into the Kenilworth Road fold soon after becoming manager in the spring of 1978 and John Moore has been part of the backroom team ever since.

The ace strikers and million-pound transfer boys might grab the headlines, but football has even greater need of the John Moores of this world.

PRESS GANG

One of the regular features in the Hatters magazine this season, contributed by your nimble minded chief executive, John Smith, is headed 'Save Our Soccer'.

Much has been said and written about the undoubted problems affecting our national game, highlighted particularly by the now sporadic but still frighteningly serious outbursts of hooliganism and, for a number of reasons, not least the economic ones, the continuing decline in attendances.

Rather less time has been allocated towards highlighting possible remedies, especially those which could act as an antidote to the falling gates. Here at Luton I believe you have one of the ideal solutions — the splendidly positive, happily adventurous way in which manager David Pleat encourages the team to play.

Over the years, whether successful or struggling, Luton Town has always been recognised as a team which will give entertainment value for money, even if at times the activity may be somewhat unorthodox — and no doubt painful — such as when David Moss managed to kick the corner flag rather harder than the ball in taking a corner against Derby County recently.

Seriously though, reflecting on last season, when I reported something in the region of 100 matches, both at home and in Europe, the two sides which gave me more pleasure than most, were West Ham and Luton Town.

Somehow, whatever the challenge facing them, you know there will be no half measures so far as intentions are concerned. A

'result' for Luton Town means nothing less than a win and this is reflected in their play, even on days when things go horribly wrong.

Yet at the risk of offending some of those utterly loyal followers who sit within earshot of the Press Box, or those who congregate behind the goal at the Oak Road end, where I stood for one match last season, there are times when I



Another in our occasional series where members of the national Press contribute to your magazine. Tonight, John Parsons of the *Daily Telegraph* is the guest writer.

wonder if Luton Town supporters appreciate just how lucky they are.

John Toshack, now moulding a fairy tale success for Swansea at the Vetch Field on all the experience he gathered from so many magnificent years at Anfield, always recalls that the real strength of Liverpool's supporters is that even when the team is losing, their

fans never desert them.

Now I am not suggesting that Luton supporters desert their side when they are struggling. At the same time, I do not feel they really back them to the extent they deserve. Just as a particular mood on a pitch can spread to the terraces, so a feeling of edgy impatience among spectators can transmit itself to players and if Luton are to win the promotion title which just eluded them last season, then the fans can have an important part to play.

It astonished me at one home match this season to hear Luton being condemned by some of their own followers within five minutes of the game starting. I can appreciate their feelings. They desperately want their team to succeed and it is abundantly clear that the Luton players want to please their fans but from time to time they should remember the story of the Tortoise and the Hare and realise that it is not wise to play every match at 100 mph. Nor should they expect Luton to win 6-0 every match by divine right.

Luton is one of those places where there is a genuine affinity between players and supporters but, as in all families, there can be strains. All of us tend to be less tolerant with close relations than we are with acquaintances.

As a neutral outsider, I see dedicated but occasionally over-demanding supporters and a team with masses of flair, natural ability and exuberance but one which also suffers occasional bouts of self doubt. Working as one Luton Town and their fans could be back in the First Division in no time.



SHOP WINDOW



Lotteries appear to be the name of the game at Luton these days and capture banner headlines in our local Press.

Whilst the financial gains we make for the club by these commercial activities do produce the means by which we can further improve our prowess in League football and are vital to our survival, from choice I would rather talk about our fabulous team on the field.

Our manager and players are to be congratulated for the large part they play in the overall success here at Luton, we are once again a team to be reckoned with throughout the UK.

Commercially, although we are a twin success we are purely a back-up to successful football at Kenilworth Road. You could say the backroom boys is our identity.

I am sure the donation of £220,000 plus this year will help the club to make further progress leading to even more honours.

Should we achieve Division One next season, the backroom boys must continue to produce even higher donations to the parent club.

At present our five lotteries turnover exceeds £1,000,000 per year. Well, we have made a

start, and with your help as customers and agents let's get cracking on the second million. But, as I say, football is the name of the game — that is the cake. What we must try to provide is the icing.

After all, lotteries are only a facet, we also involve ground advertisements, sponsorships, souvenirs, away travel and Junior Hatters as well as the various member clubs within the complex. They are very important facets to the commercial scene.

MIKE HARDWICKE
Commercial Manager



ACTION

**BLACKBURN
ROVERS
LUTON
TOWN**

**0
1**



Top left: Lil Fuccillo turns away from a certain collision as the 'Rovers' keeper produces another desperate clearance.

Bottom left: Dave Moss secures our three points from the 'spot' after Brian Stein is brought down by the keeper.

Above: The Blackburn defence is broken but Brian Stein's shot hits the post.

Below: Brian Horton drives a powerful ball goalwards.



VISITORS



JIM McDONAGH

THE CLUB

Bolton arrive at Kenilworth Road tonight desperately attempting to claw their way up the Second Division table. We beat the Wanderers 2-1 at Burnden Park in the second game of the season, but they made up some badly needed ground when they defeated Watford, second in the table, recently.

Last season was also a struggle for Bolton when they finished in 18th position — only two points better off than Preston who were relegated to the Third Division.

A moderate home record would have been enough to give them a better position but their away form left much to be desired.

One of the founder members of the Football League, the Wanderers were originally known as Christ Church when they were formed in 1874. In 1877 their present name was adopted and was a name which was to become one of the best known in English football.

The Wanderers moved to their current home at Burnden Park in 1895 after spells at Park Recreation Ground, Cockles Field and Pikes Lane.

They won the first FA Cup Final to be played at Wembley Stadium in 1923 when an estimated 200,000 packed the Empire Stadium to overflowing.

They dominated the competition in the twenties, going on to lift the Cup in 1926 and 1929 but they then had to wait until 1958 for their next major honour when the legendary Nat Lofthouse led them to FA Cup glory when they beat the Munich-ravaged Manchester United side. They won the Second Division Championship in 1908-09 and 1977-78 and the Third Division title in 1972-73.

After being relegated to the Second Division several times in their early days they enjoyed an unbroken First Division spell from 1911-1933.

From 1935 to 1964 the Wanderers remained in the First Division and in 1970-71 they dropped into the Third Division for the first time in their history. Two years later they were promoted as champions.

They won promotion to the First Division at the end of the 1977-78 season, champions, after twice finishing in third place in the Second Division. They were

relegated to the Second Division in 1980.

THE PLAYERS

JIM McDONAGH (Goalkeeper) In his second spell with Bolton. Jim rejoined Wanderers during the summer from Everton after a season at Goodison Park. The former Rotherham keeper was a member of Bolton's Second Division Championship winning side in 1978.

DENNIS PEACOCK (Goalkeeper) Joined the Wanderers from Doncaster in March 1980. Born in Lincoln. He had a spell with Nottingham Forest. At 6ft 3in he is one of the tallest keepers in the League.

GERRY McELHINNEY (Defender) Signed from Distillery at the beginning of last season. An aggressive, enthusiastic defender.

PETER NICHOLSON (Defender) Signed for the Wanderers from Blackpool for a small fee prior to the 1971-72 season and has proved to be a fantastic bargain. A utility player who always gives a hundred per cent in either defence or midfield.

PAUL JONES (Defender) Is a tall, quick-tackling defender who has been a member of the Under-23 and Full England squads. He is a commanding player in the air as well as on the ground and has a habit of scoring vital goals. Can also play at full-back with distinction.

PETER REID (Midfield) Joined Bolton from school on Merseyside. Was a regular member of the England Under-21 side which he also skippered. A very talented player who had the misfortune to sustain a severe knee injury which put him out of action for the second half of the season 1978-79 and the first half of the 1979-80 season, but recovered to win back a regular place.

LEN CANTELLO (Midfield) Len cost the Wanderers a record £350,000 fee when he signed from West Bromwich Albion in June 1979. He is the sort of midfielder player who delights in stamping his authority on a game. Always looking for a chance to attack he is an exciting player with an eye for seeing an unexpected opening.

LINE-UP



DUSAN NIKOLIC (Midfield) Signed from Red Star Belgrade in September 1980 to strengthen the midfield. Yugoslavian born, has represented his country at senior international level on four occasions and also has eleven Under-23 caps and 24 Youth caps. Played for Red Star in European competitions every season since 1970.

TONY HENRY (Full-back/midfield) Signed for £125,000 from Manchester City. Tony was one of the unsung heroes of Manchester City's revival last season, he came on as substitute in Manchester City's FA Cup Final appearance in May. Versatile player who is bound to be a useful acquisition to the club.

BRIAN KIDD (Striker) Brian was a member of Manchester United's European Cup winning team in 1968 and he was later capped twice by England. He moved on to Arsenal for £110,000 in 1974 but two years later he returned to Manchester to join the City club for £100,000. After two seasons at Maine Road he joined Everton for £150,000 and became the club's top scorer. He joined Bolton for £150,000 in May 1980.

ALAN GOWLING (Striker) Signed for a £120,000 fee from Newcastle United three seasons ago after four years at St James' Park. Started his career with Manchester United and then moved to Huddersfield. Has won tremendous respect both on and off the field and is a leading light in the Professional Foot-

ballers Association of which he is the current chairman.

JOHN THOMAS (Striker) A speedy striker, John was given his chance in League Football when he joined Everton. Signed for the Wanderers on a free transfer in June, 1980 on the recommendation of his former teammate Brian Kidd.

CHRIS THOMPSON (Striker) A speedy attacker with plenty of skill, Chris joined the Wanderers from school. He became an apprentice and then went on to sign full professional forms in July 1977. He has represented England at Youth level.

MIKE CARTER (Forward) A highly talented striker with an ability to score spectacular goals. Mike had a spell on loan with Mansfield in the 1978-79 season making 18 League appearances and scoring four goals. He made his League debut for Wanderers against Bristol City in December 1979 and scored his first League goal later that month in the dying seconds to snatch a home point against Everton at Burnden Park after coming on as substitute.

MIKE BENNETT (Defender) A member of the successful England Youth Squad which won the 1980 European Youth Championships in East Germany, Mick is one of the most promising youngsters in the game. Has played at full-back and in midfield. Bolton born, he joined the Wanderers as a schoolboy.

Back row (left to right): Mike Bennett, David Kay, Barry Taylor, Wayne Foster, Brian Atherton, John Thomas, David Hoggan.

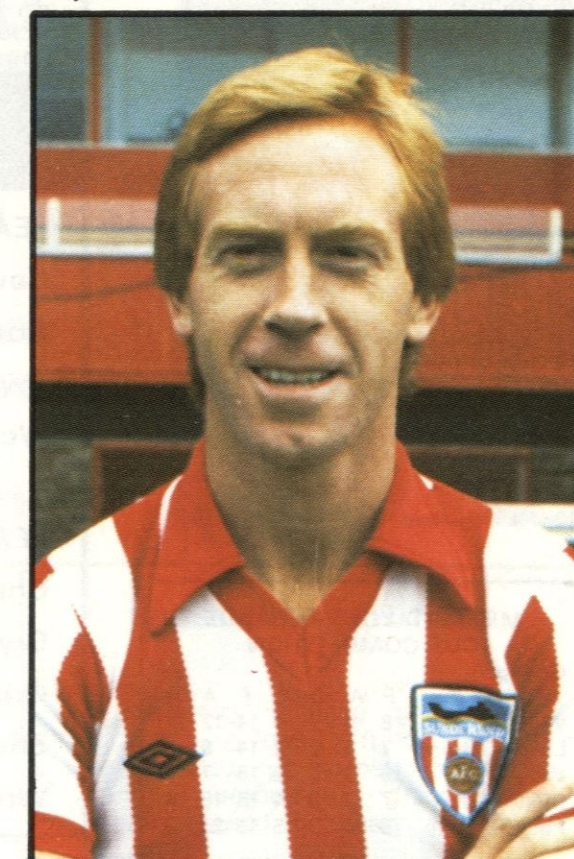
Middle row: Charlie Wright (coach), Peter Nightingale (physio), Neil Berry, Chris Thompson, Peter Nicholson, Dennis Peacock, Simon Farnworth, Jim McDonagh, Gerry McElhinney, Paul Jones, Ian Brennan, George Mulhall (manager), Walter Joyce (coach).

Front row: Dusan Nikolic, Mike Carter, Alan Gowing, Len Cantello, Neil Whatmore (now Birmingham), Peter Reid.

DAVID HOGGAN (Midfield) Joined Bolton from Tynecastle Boys Club, Edinburgh as an apprentice in November 1977 and signed full professional forms in August 1979. Made his League debut in the First Division at Bristol City in April 1980. Won international recognition with the Scottish Under-21s squad last season.

IAN BRENNAN (Defender) Cost Bolton Wanderers a bargain £25,000 when he signed from Lancashire neighbours Burnley last season. A cultured left-back who can also play in midfield or in the centre of defence.

STEVE WHITWORTH recent signing from Sunderland. England international when playing for Leicester City.



POINTS ATTENDANCES LEAGUE TABLES

Opponents	Result	Attendance	Points	Position	Findlay	Stephens	Aizlewood	Horton	Saxby	Donaghy	Hill	Stein	White	Antic	Ingram	Turner	Moss	Fucillo	Goodyear	Small	Aleksic	Own Goal
Goals Scored							3		1	3	2	3	11	1			6	1	1			1
1981																						
August																						
29 Charlton Athletic	3-0	8,776	3	-1	2	3	4	5	6	7	8	9	10	11								OG
September																						
1 Queens Park Rangers	2-1	18,703	6	-1	2	3	4	5	6	7	8	9	10	11								
5 Bolton Wanderers	2-1	6,911	9	1	2	3	4	5	6	7	8	9	10	11+						12		
12 Sheffield Wednesday	0-3	12,131	9	3	1	2	3	4	5	6	7	8	9	10		11+				12		
19 Leicester City	2-1	14,159	12	2	1	2	3	4	5	6	7	8	9	10			11					
22 Cardiff City	2-3	9,015	12	4	1	2	3	4	5	6	7	8	9	10			11	12				
26 Watford	4-1	12,839	15	2	1	2	3	4	5	6	7	8	9	10			11	10				
October																						
3 Orient	3-0	5,584	18	1	1	2	3	4	5	6	7	8	9	12			11	10				
6 Wrexham (LC2 - 1L)	0-2	6,146	-	-1	2	12	4	5	6	7	8	9	3				11	10				
10 Oldham Athletic	1-1	8,403	19	1	1	2	3	4	5	6	7	8	9	12			11	10				
17 Grimsby Town	6-0	9,090	22	1	1	2	3	4	5	6	7	8	9	12			11	10				
24 Wrexham	2-0	4,069	25	1	1	2	-	4	5	6	7	9	8				11	10	3			
28 Wrexham LC2 - 2L)	1-0	3,453	-	-1	2	-	4	5	6	7	8	9	12				11	10	3+			
31 Crystal Palace	1-0	11,712	28	1	1	2	-	4	5	6	7	8	9	12			11	10	3			
November																						
7 Derby County	3-2	10,784	32	1	1	2	3	4	-	6	7	8	9				11	10	5		1	
14 Blackburn Rovers	1-0	9,862	35	1	-	2	3	4	-	6	7	8	9				11	10	5			
21 Newcastle United (1)																						
24 Bolton Wanderers																						
28 Rotherham United																						
December																						
5 Shrewsbury Town																						
12 Chelsea (2)																						
19 Barnsley																						
26 Cambridge United																						
28 Norwich City																						

BOLTON THROUGH THE YEARS

- Bolton experimented with some interesting colour variations in their pre-Football League days. Their first colours in 1880 were scarlet and white quarters; in 1883 they wore white shirts with red spots to make players look bigger; and in 1884 they wore salmon pink spots for a spell.
- In 1902-3 Bolton kicked off with 19 defeats and three draws in their first 22 League games. They lost only four of their remaining games, but were inevitably relegated at the end of the season.
- In 1899-1900, 1908-9 and 1910-11 Bolton were promoted back to Division One just a year after being relegated.
- Goalkeeper Dick Pym won three FA Cup winners medals for Bolton (in 1923, 1926 and 1929), all without conceding a goal in the final.
- Ray Parry was just 15 years and 207 days when making his First Division debut for Bolton at Wolverhampton in October 1951.
- Ralph Gubbins netted both goals for Bolton in their FA Cup semi-final win over Blackburn in 1957-58 but was left out of the team for the final. Bolton's FA Cup Final team (which beat Manchester United 2-0) was the 'cheapest' of modern times, none costing more than a £10 signing on fee.
- John Byron netted hat-tricks for Bolton in Football League, League Cup and FA Cup games in the sixties — one of seven players to do so in the history of the game.
- Ralph Banks played at left back for Bolton in the 1953 FA Cup final against Blackpool. His brother, Tommy, played at left back for them against Manchester United in the 1958 FA Cup final.
- Joe Smith and Ted Vizard played on opposite wings for Bolton in no fewer than 382 League games between 1910 and 1927.

HALF-TIMES

LEAGUE DIVISION ONE

Coventry v Stoke City

Notts County v Everton

Swansea v Brighton

Wolves v Southampton

LEAGUE DIVISION TWO

Charlton v Chelsea

Crystal Palace v Norwich

Orient v Newcastle

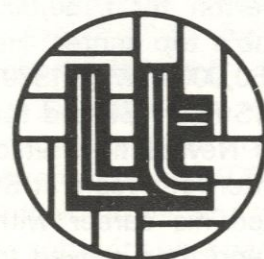
Sheff. Wednesday v Barnsley

Wrexham v Cardiff

LEAGUE CUP

THIRD ROUND REPLAY

W.B.A. v West Ham United



MIDLAND YOUTH LEAGUE CUP COMPETITION

Group A	P	W	D	L	F	A	Pts
W.B.A.	8	5	2	1	14	12	12
Luton Town	7	3	2	2	14	9	8
Wolves	6	3	1	2	15	7	7
Bristol City	7	3	0	4	15	18	6
Peterborough	8	0	3	5	11	23	3

FOOTBALL COMBINATION FIXTURES 1981-82

	F	A
Aug. 29 Orient	4-0	
Sept. 1 Tottenham Hotspur	1-0	
Sept. 5 Oxford United	2-1	
Sept. 12 Leicester City	1-1	
Sept. 19 Queens Park Rangers	2-0	
Sept. 26 Watford	0-5	
Oct. 3 Bristol City	1-1	
Oct. 10 Crystal Palace	4-0	
Oct. 17 Swindon Town	0-3	
Oct. 24 Ipswich Town	2-3	
Nov. 3 Hereford United	1-0	
Nov. 7 Arsenal	1-1	
Nov. 10 Norwich City	1-3	
Nov. 14 Fulham	2-2	
Nov. 17 Birmingham City	1-1	
Nov. 25 Tottenham Hotspur		
Nov. 28 Southampton		
Nov. 30 Chelsea		
Dec. 12 West Ham United		
Dec. 19 Bristol Rovers		
Dec. 28 Reading		
Jan. 2 Oxford United		
Jan. 9 Orient		
Jan. 16 Queens Park Rangers		
Jan. 23 Leicester City		
Jan. 30 Bristol City		
Feb. 6 Watford		
Feb. 8 Southampton		
Feb. 13 Crystal Palace		
Feb. 20 Swindon Town		
Mar. 6 Ipswich Town		
Mar. 13 Plymouth Argyle		
Mar. 20 Arsenal		
Mar. 27 Fulham		
Apr. 3 Birmingham City		
Apr. 12 Reading		
Apr. 17 Hereford United		
Apr. 24 Southampton		
Apr. 27 Chelsea		
May 4 Norwich City		
May 8 West Ham United		
May 15 Bristol Rovers		
May 22 To be arranged Plymouth Argyle (A)		

DIVISION TWO TABLE 1981-82

	P	W	D	L	F	A	Pts
Luton Town	15	5	0	2	19	9	6
Watford	15	5	2	1	14	6	5
Barnsley	15	6	1	1	15	4	2
Q.P.R.	15	5	1	1	12	3	3
Oldham Athletic	15	4	0	12	5	3	1
Sheffield Wednesday	15	4	1	2	9	9	4
Norwich City	15	5	2	1	13	7	2
Newcastle United	15	6	1	1	15	5	1
Cambridge United	15	5	0	3	13	8	2
Blackburn Rovers	15	3	1	3	5	3	2
Cardiff City	15	4	1	3	12	14	2
Chelsea	15	4	2	2	13	10	2
Shrewsbury Town	15	5	1	2	13	8	1
Leicester City	15	2	3	2	5	5	3
Rotherham United	15	5	1	2	19	9	0
Charlton Athletic	15	5	0	2	14	8	0
Derby County	15	3	2	2	11	9	2
Crystal Palace	14	4	0	3	9	6	1
Grimsby Town	14	1	2	3	7	9	3
Bolton Wanderers	15	3	0	5	9	13	1
Wrexham	15	2	0	5	6	10	1
Orient	15	1	3	3	6	9	2

Up to and including Saturday 21st November 1981

FOOTBALL COMBINATION 1981/82

	P	W	D	L	F	A	Pts
Q.P.R.	16	12	1	3	37	15	25
Watford	15	9	5	1	28	15	23
Norwich City	14	10	2	2	34	13	22
Southampton	13	8	4	1	35	13	20
Ipswich Town	13	7	4	2	20	11	18
Plymouth Argyle	13	7	2	4	19	16	16
Luton Town	14	6	4	4	22	20	16
Fulham	12	4	4	4	15	13	12
Chelsea	11	4	4	3	15	16	12
Leicester City	15	3	6	6	19	26	12
Arsenal	14	3	6	5	14	21	12
Crystal Palace	14	6	0	8	14	26	12
West Ham United	14	5	1	8	30	22	11
Birmingham City	14	3	5	6	15	15	11
Swindon Town	13	4	3	6	24	26	11
Tottenham	10	4	2	4	11	12	10
Reading	10	2	5	3	10	17	9
Bristol City	14	3	3	8	16	26	9
Oxford United	13	3	2	8	18	25	8
Orient	12	2	3	7	11	23	7
Hereford United	11	2	2	7	9	22	6
Bristol Rovers	11	1	2	8	9	32	4

Up to and incl. Saturday 14th Nov. 1981

AVERAGE ATTENDANCES

	Best	Average
Sheffield Wed.	26,826	19,726(7)
Barnsley	28,870	16,429(7)
Newcastle Utd	19,376	16,158(7)
Chelsea	20,036	16,061(7)
Leicester City	19,125	14,898(7)
Norwich City	14,484	13,670(7)
Q.P.R.	18,703	13,504(7)
Derby County	16,046	12,170(7)
Watford	14,463	11,448(7)
Crystal Palace	14,227	10,623(7)
Luton Town	12,839	10,621(7)
Grimsby Town	13,110	9,739(6)
Rotherham United	18,324	9,611(7)
Blackburn Rovers	15,050	9,582(7)
Charlton Athletic	11,133	7,583(7)
Bolton Wanderers	7,361	6,851(7)
Oldham Athletic	9,773	6,647(7)
Orient	9,698	6,154(7)
Cambridge United	8,806	5,563(7)
Cardiff City	8,898	5,393(7)
Shrewsbury Town	5,672	4,703(7)
Wrexham	4,795	3,981(7)

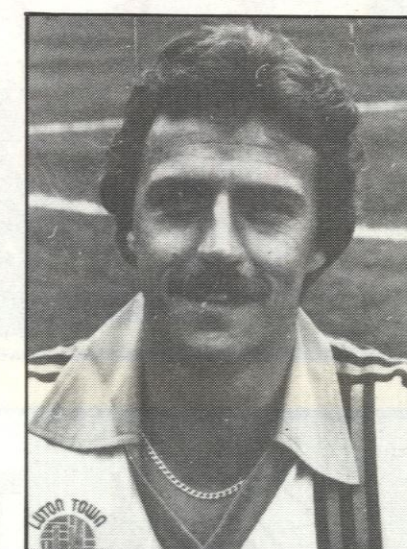
Up to and incl. Sat. 14th Nov. 1981

DIV 2 HOT SHOTS

Moore (Rotherham)	11
White (Luton)	11
Aylott (Barnsley)	10
Banks (Barnsley)	10
Stainrod (Q.P.R.)	9
Stevens (Cardiff)	9
Atkins (Shrewsbury)	8
Fern (Rotherham)	8
Glavin (Barnsley)	8
Jack (Norwich)	8
Melrose (Leicester)	8
Varadi (Newcastle)	8
Walsh (Charlton)	8

Up to and incl. Sat. 21st Nov. 1981

DAVID MOSS
Scored his seventh goal of the season at Newcastle last Saturday.



Tonight's Mitre Match Ball is sponsored by:

KINGSTON WINDOWS
(Really Worth Looking Into)
TEL: DUNSTABLE 603932-660110

CROSSWORD SOLUTIONS

Game: 12. Ian.
Stranraer: 6. Alan; 8. Thunder; 10.
1. Dean Court; 2. two; 3. Bristol; 4.
across; 13. Reeves; 14. Inter. Down.
Aston Villa; 9. Cradlington; 11. See 7
Across: 1. Death; 5. parrot; 7. 8-11ac.

TODAYS TEAM CHECK

LUTON TOWN			BOLTON WANDERERS	
MILIJA ALEKSIC	1		JIM McDONAGH	
KIRK STEPHENS	2		STEVE WHITWORTH	
MARK AIZLEWOOD	3		IAN BAILEY	
BRIAN HORTON	4		TONY HENRY	
CLIVE GOODYEAR	5		PAUL JONES	
MAL DONAGHY	6		ALAN GOWLING	
RICKY HILL	7		JEFF CHANDLER	
BRIAN STEIN	8		BRIAN KIDD	
STEVE WHITE	9		DAVID HOGGAN	
LIL FUCCILLO	10		LEN CANTELLO	
DAVID MOSS	11		CHRIS THOMPSON	
	12			

Referee: J. E. BRAY, Hinckley, Leicestershire

Linesmen: M. J. COTTON (Red Flag)

G. CLARIDGE (Yellow Flag)



TOKEN

9

Tuesday

24th November 1981
BOLTON WANDERERS



IN CHARGE TODAY

BRAY, JEFF E. (Hinckley, Leicestershire). Began refereeing in local leagues in 1965. Progressed through the Football Combination to the Football League List in 1975. Thirteen years Secretary of local football league. Chairman of local Referees' Association. He refereed the 2nd leg of the FA Vase semi-final in 1977-78. Married with two children and is an Assistant Works Manager with a dry cleaning firm. His spare time is spent recruiting new referees and promoting local football.