

# BLACKBURN ROVERS



Official Match Programme 35p

**BLACKBURN ROVERS**

**v**

**LUTON TOWN**

Football League Division Two

Saturday, 14th November, 1981. Kick-off 3-00 p.m.

Match Sponsored by  
**COWIES**  
of Blackburn



Voted best programme in Division Two 1980/81



# COWIES of Blackburn



## Personal Invitation

If you would like to try one of the best selling Ford range please give us a ring and we will be pleased to arrange a test drive.  
Superbly styled cars embodying advanced engineering and quality Motorcraft Parts.  
Even if you don't buy one at least you'll know what you're missing.



Our Service Department offers complete technical expertise when it comes to servicing Fords and all popular makes of car.

Modern workshop facilities manned by factory-trained technicians and backed by the confidence of 'Ford Sure' to give your car the very best in maintenance.

## Quality Used Cars

Take the gamble out of buying a used car. Come and inspect our range of competitively priced guaranteed Used Cars, which have been thoroughly inspected in our modern workshops.

## Body & Paint Shop

The Body and Paint Shop is fully equipped and offers a specialist service for first class repairs and quality resprays on all popular makes of car.



Our Parts Department always carries a comprehensive range of Quality Parts and Accessories, including 'Motorcraft Parts' to fit almost every popular British and foreign make of car.

Remember to always insist on genuine Motorcraft/Ford replacements for continued reliability and performance.



Self-Drive Car and Van Hire with confidence

- ★ Competitive rates
- ★ Inclusive AA membership
- ★ Clean, modern, self-drive hire fleet

Contact our Cowie Hire Department whatever your needs - you'll find the service fast, efficient and courteous.



**Montague Street, Blackburn. Telephone 57021.**  
**ASK ABOUT COWIES LEASING PLAN**

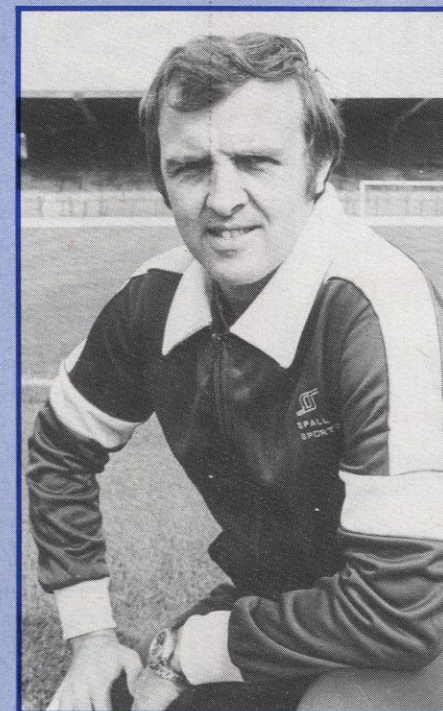
# BOB SAXTON

TODAY we welcome League leaders Luton Town to Ewood Park. Their record to date is very impressive, having won 10, drawn 1, lost 2 and they also are unbeaten away from home. So on present form they certainly are the best team in the Second Division and warrant top spot.

Our very good away win last week at Crystal Palace puts us well in contention at the top of the table.

A win today against Luton would be a tremendous result, not only moving the team closer to the top of the table, but it will also give us a guideline as to the standard required if we are to maintain a promotion challenge.

It is nice to see today's game is sponsored once again. In this present economic climate the Commercial Department have a difficult job to do and the support from local industry through sponsorship is most welcome. Like every club we cannot progress



from the money taken through the turnstiles and commercial income from every source is vital to the future of the club.

Finally, best wishes to Andy Crawford, who as you all know signed for Bournemouth last week. Andy has linked up with one of his former colleagues from Derby, David Webb, now Bournemouth manager and everyone at Ewood wishes him every success with his new club.

*Bob Saxton*

## Blackburn Rovers Football & Athletic Company Limited

Ewood Park, Nuttall Street,  
Ewood, Blackburn,  
Lancashire, BB2 4JF  
Telephone 0254 55432

President  
Mr W H Bancroft

Vice-Presidents  
Mr E Pickering Mr A L Fryars

Hon Vice-President  
Rt Hon Mrs Margaret Thatcher MP

## Directors

Chairman: Mr D. Brown  
Vice-Chairman: Mr W. Fox  
Dr M. Jeffries TD  
Mr T. W. Ibbotson LLB  
Mr A. Sharples  
Mr R. D. Coar BSc

Manager: Bob Saxton  
Secretary: John W. Howarth AAAI  
Commercial Manager: Geoff Butterfield  
Physiotherapist: Tony Long  
First Team Coach: Tony Parkes  
Reserve Team Manager: Jim Furnell  
Youth Development: Alan Bradshaw  
Chief Scout: Harold Jarman

## Honours

FOOTBALL LEAGUE  
Division One  
Champions 1911-12 1913-14  
Division Two  
Champions 1938-39  
Runners Up 1957-58  
Division Three  
Champions 1974-75  
Runners Up 1979-80

FOOTBALL LEAGUE CUP  
Semi-Finalists 1961-62

FOOTBALL ASSOCIATION CUP  
Winners 1884 1885 1886 1890 1891 1928  
Finalists 1882 1960



**BBC****Radio  
Lancashire****96.4 VHF and 351  
Medium Wave****Catch up with ALL the  
results on SPORTS  
EXTRA 5.30 p.m.****The Voice  
of the County****mitre****Gives you an unfair advantage**Available from: DAVID & J PRATT (Sportswear)  
72 New Chapel Street  
Mill Hill  
Blackburn BB2 4DT

# NEWS & VIEWS

TODAY'S visitors Luton come to Ewood Park not only as clear leaders in the Second Division and favourites for promotion but also with another very special claim to fame. They are the only one of the 92 Football League sides who can still boast an unbeaten away record. Even in a season when away victories are plentiful and seem to be a little easier to obtain, Luton's record of five wins and a draw from their first six Second Division trips is a remarkable effort to say the least.

While I paid tribute to their goalscoring prowess in a recent programme, it is perhaps significant that as well as putting the ball in the back of the net at one end, they have also managed to avoid letting it in too often at the other and their record of conceding only four goals on tour is also the best in the Second Division.

So Rovers, if they had any doubts, know that only top form will be good enough to beat David Pleat's "Hatters" who have had a dream start to the current campaign. Ironically, despite their achievements this season, Luton do not have a good record at Ewood and Rovers can point to wins and four draws from the fifteen games played between the clubs in Blackburn since the last war.

Speaking of Luton, incidentally, reminds me of a trip that will be recalled with something approaching a nervous breakdown by a couple of hundred Rovers supporters. The occasion was an F.A. Cup tie between the clubs at Kenilworth Road a few years back.

A specially chartered train taking Rovers fans to the game suffered just about all the problems which are part of the "sick" jokes told regularly about British Rail, with the result that the fans did not arrive at the ground until the game had less than half an hour to run.

Then came the sting in the tail, as they arrived just in time to see Luton score two goals to take them through to the next round. There was not even the consolation of a good result for the equally lengthy trip back.

An "away day" not to be remembered.

NEXT Wednesday's vital World Cup qualifying games — not only for England but Northern Ireland and Wales too — will



By Peter White,  
Lancashire Evening  
Telegraph  
& Sports Pink.

perhaps prompt the memories of older Rovers fans who will remember the last Rovers player to be involved on active service in the game's four-yearly showpiece event.

Bryan Douglas, still a regular visitor to Ewood, was the last to appear in the final stages while a Rovers star. That was way back in Chile in 1962.

John Connelly joined Rovers shortly after he had been in the victorious England squad of 1966, while Keith Newton left for Everton a few months before going to Mexico and the country's last appearance in the finals. Now Noel Brotherton stands on the verge of helping Northern Ireland reach Spain next year, along with near neighbours Billy Hamilton and Tommy Cassidy of Third Division Burnley.

If Noel can make it, it will give Rovers fans an extra local interest in the finals and, of course, he will be carrying the best wishes of his Ewood team-mates in his bid to play in what must be regarded as the ultimate setting for a player to display his talents. While we are thinking of England's hopes, let's also not forget Wales and Mike England. While he is often described as the "former Spurs centre half", Mike was a product of the Rovers junior ranks and the current Welsh manager first made his name as an outstanding Ewood star of the sixties.

WORRYING signs for soccer recently in attendances on Merseyside with fewer than 30,000 for the European Cup game against AZ Alkmaar and even relatively big gaps on the terraces for the visit of Manchester United to Anfield.

The economic recession is really starting to bite and professional clubs will have their

work cut out to keep the regular supporters they have at the moment, let alone attract new ones.

Some clubs, however, seem to be able to rely on incredible loyalty. Take Sheffield United for instance. Despite dropping into the Fourth Division for the first time in their history, they are drawing good crowds for all their home games.

Last Saturday, more than 13,000 fans flocked to Bramall Lane for the game against Tranmere and their gate was higher than the paltry 13,193 who watched Wolves First Division Midlands "derby" against Coventry and just a couple of hundred fewer, than turned out at Stoke to see Kevin Keegan and Co. for Southampton.

What a contrast between United's attendance and the 3,851 who watched Cambridge against Shrewsbury. Although they have forced themselves into the promotion race, it must be asked what future there can be for a club like Cambridge who have worked miracles to establish themselves as a Second Division force in such a short time since coming into the Football League.

Their £100,000 investment in striker Joe Mayo paid a couple more dividends, as he got both goals in a 2-0 success.

WHILE the now departed Andy Crawford had something of an up and down existence in his two years at Ewood, it should not be forgotten how much his goals contributed to that emotional Third Division promotion success in Howard Kendall's first season. Andy had his share of problems and, at times, seemed to enjoy something of a love-hate relationship with many supporters.

But his 18 League goals that season will take some beating by a Rovers striker these days, especially when you remember that he did not sign until October. He takes up a new promotion challenge with Fourth Division Bournemouth and if he can give as much value to them as he gave Rovers in that Third Division campaign, they will get their moneys worth in terms of goals.

# STAR VISITOR

BRIAN  
HORTON



THE acquisition of powerful midfielder Brian Horton during the close season could well have provided the last piece to a promotion jigsaw for Luton Town. For Brian has an excellent promotion record with his two previous league clubs, and has enjoyed success in the three divisions of the Football League.

It was as a schoolboy in Cannock (West Midlands) in 1962/3 that Brian was first spoken of in a match programme as 'a player of great possibilities, given time to mature'. His first league club was Walsall, but they did not seem to realise these possibilities for after two seasons they released him, and in 1966 while still in his teens he linked up with West Midland League team Hednesford Town.

This was the club with which Gordon Lee the former Everton manager had started his career and news of Brian's promise reached his ears at a time when he was manager of Port Vale.

He made his debut against Preston North End in a Third Division game early in 1970/1 and as a midfielder with a flair for scoring goals he went from strength to strength.

Twice he helped Vale to come within striking distance of Division Two and by the time he moved to Brighton in March 1976, he had played 236 games for Vale and had scored 33 goals.

In two seasons as skipper of Brighton in Division One, Brian missed only four games and made a considerable contribution to them consolidating their position. By the time of his move in the close season he had netted 33 goals for Brighton, exactly the same number as he got for Port Vale.



# WELCOME TO OUR VISITORS LUTON TOWN

LAST week's 3-2 win over Derby County left Luton a clear three points ahead of their nearest rivals at the top of Division Two, as they strive to improve on last season's performance when they ended up just two points short of promotion.

All of which suggests that manager DAVID PLEAT, one of soccer's least well known managers, is very much on the right track as he strives to write another exciting chapter in the history of a relatively small club who have had some exciting moments in their 98-year history.

To many people Luton were taking a big risk when they promoted him to the Manager's office in the spring of 1978. He inherited a team on the slide, and it took him two years to complete an upheaval in the playing staff.

Luton were near to relegation at times, but he persevered and is now acknowledged as the inspiration for a side determined to play attractive and entertaining football. They have been on the fringe of the Second Division promotion battle for the past two seasons and no-one in Luton is keener than Mr. Pleat on seeing the club back in the top flight.

Luton's first spell in the Football League was in Division Two from 1897 to 1900, but they then had to wait 20 years before returning as founder-members of the new Division Three (South) in 1920. They stayed there for 17 seasons, winning promotion in 1937 and embarking on the most successful period in their history. 1955 saw them reaching

Division One for the first time ever and in 1959 they reached the F.A. Cup Final, going down to Nottingham Forest at Wembley. Then came decline as they lost their First Division place in 1960, slipped into Division Three in 1963 and then in 1965 they became the second side (Brentford were the first) to have fallen all the way from Division One to Division Four.

To their credit they fought back and in just nine seasons, they fought their way back to Division One though they stayed up for only one season, 1974/5.

At this stage they also had severe financial problems, but they weathered the storm and though their league positions have fluctuated they have been amongst the most attractive teams in Division Two. They have now finished successively seventh, sixth, thirteenth, eighteenth, sixth and fifth. Two seasons ago they were four points short of promotion, last season just two and in fact they were in with a chance after three wins in a row last April. Then, however, came a home defeat by Oldham and a draw at Swansea and a fine 3-0 win at Bolton in the very last game came to late.

## THIS SEASON

Away from this season has been excellent and their current record is the best in the Football League with wins at Q.P.R., Bolton, Leicester, Orient and Wrexham and a draw at Oldham. They also won at Wrexham in the League Cup, though they went out

because of the 2-goal deficit incurred at home.

Earlier they had lost league games at Kenilworth Road to both Sheffield Wednesday and Cardiff, but more recently they have beaten Grimsby 6-0, Crystal Palace 1-0 and Derby 3-2.

Their fans have thus been getting value for money and they will be all out today to end their run of six successive games here without scoring. Their last goal in fact was in a First Division game in April 1960 when they won 2-0.

Current leading scorer in the whole of Division Two is STEVE WHITE who came from Bristol Rovers two years ago and he is likely to be linking up with DAVID MOSS, now in his fourth season since moving from Swindon and South African BRIAN STEIN. In midfield the men to look out for are PASQUALE FUCCILLO and RICKY HILL, two home grown players with plenty of experience and this season's new signing BRIAN HORTON, who has played nearly 500 games for Port Vale and Brighton. In defence MIKE SAXBY came from Mansfield three years ago and links up with Northern Ireland international MAL DONAGHY in the centre with KIRK STEVENS and last season's debutant CLIVE GOODYEAR on the flanks. JAKE FINDLAY has done very well in the last three seasons in goal since moving from Aston Villa, while substitute recently has been Yugoslavian RADDY ANTIC.



## LUTON TOWN F.C. 1981-82

**Back row (left to right):** Robert Johnson, Wayne Turner, Clive Goodyear, Michael Small, Frankie Bunn, Godfrey Ingram, Seamus Heath, Neil Madden.  
**Third row:** John Moore (Coach), Steve White, Mal Donaghy, Jake Findlay, Mike Saxby, Alan Judge, Mark Aizelwood, Pasquale Fuccillo, Trevor Hartley (Coach).

**Second row:** David Coates (Coach), Kirk Stephens, Ricky Hill, Brian Horton, David Pleat (Manager), Raddy Antic, David Moss, Brian Stein, Dr. Berry, John Sheridan (Physiotherapist).

**First row:** Alan Lane, Barry Popplewell, Tim Breacker, Mitchell Thomas, Paul Keys, Andy Beasley, Stacey North, Mark Thomas, David Owen, Raymond Daniel, Raymond Brammer.

## A Top Ten Team...

The Rovers programme was voted the Best in the Second Division and in the Top Ten League programmes last season by the British Programme Collectors' Club.

When you are looking for promotion come to the professionals for a place in the 'First Division'.



**LANGWOOD**  
Limited

Sporting and  
Commercial Promotion  
Colour Printing  
Publishing & P.R.

Clough Street · Burnley · Phone: 31131



# Darwen Bathroom Centre



**P. W. KNIGHT & Co.**  
**47 Bolton Road, Darwen**  
**Tel: 771456 or 775131**

**Domestic & Industrial  
 Heating Engineers**

**Gas Servicing  
 Contractors**

*Members of N.F.P., D.H.E., N.A.P.H. & M.S.C.*

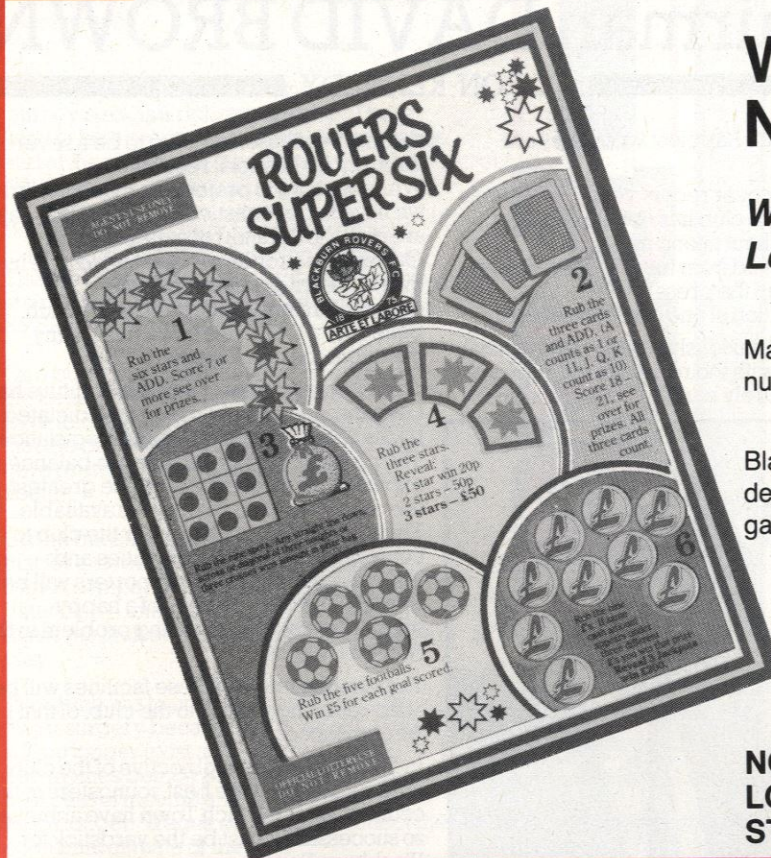
## COMMERCIAL COMMENT

### WHEN IS 6 THE NUMBER 1?

*When you buy the Rovers Super Six  
 Lottery Ticket.*

Market research has shown that 6 is the optimum  
 number of games for a ticket.

Blackburn Rovers Development Association have  
 designed an attractive four colour ticket with six exciting  
 games to create maximum customer interest.



**NOW ON SALE FROM A ROVER'S  
 LOTTERY AGENT IN YOUR AREA and  
 STILL ONLY 20p.**

## HALF-TIME QUIZ

- Manchester United have won the F.A. Cup on four occasions, but have they ever won the Football League Cup?
- John Bond, so often in the news with Manchester City, gained a cup winners medal in 1964 for which club?
- Who was the youngest player to hit 100 League Goals?
- From which club did Ipswich sign Dutch star Arnold Muhren?
- Next years World Cup finals are big news at the moment. Think back to 1966 when England beat West Germany 4-2. Geoff Hurst scored a hat-trick, but who scored the other England goal?
- Which player did Rovers sign in early October 1979?
- Name the player who appeared in two F.A. Cup Finals at Wembley, first as an amateur and then as a professional.
- Which team won the Welsh F.A. Cup last season?
- Name the first club from the Fourth Division to reach the F.A. Cup quarter-finals. The only clue is that they beat the Rovers 3-1 in the fifth round tie?
- A fox forms the centre of which club badge?

**Answers:**  
 1. No, the nearest they came was the semi-finals in 1970. 2. West Ham. 3. Jimmy Greaves 20 yrs 9 mths. 4. Ajax. 5. Martin Peters. 6. Andy Crawford, who departed for Bournemouth last week. 7. Bill Slater played as an amateur with Blackpool in 1951 and then as a professional with Wolves in 1960. 8. Swansea City. 9. Oxford United in 1964, who lost 2-1 to Preston the eventual losing finalists. 10. Leicester City.



NO-ONE feels more acutely the frustrations when things go wrong, or conversely enjoys the success more than Rovers Chairman, Mr David Brown, who talks to Ron Kennedy about the headaches and the joys of office.

There are people who believe that any success achieved by a football club is *in spite of* the Directors rather than as a result of the hard work they do. For example, every letter I have received as chairman has been answered personally. If ever I have been asked to attend a function on behalf of the club, I have never avoided it, provided there was a space in my diary. At any time I have been willing to talk to any Rovers fan who felt deeply about the club although I cannot, never will, tolerate the

## Chairman DAVID BROWN

BY RON KENNEDY

people who are happiest when they are knocking us.

Looking back over recent years' statements of accounts, the club has never balanced the books without taking into account monies received from transfer fees. Every day we read in the press of the serious financial position of one club or another.

We at Ewood anxiously review the financial position and with the recession biting more and more it surely must be clear for all to

see that this season is going to be a severe drain on our financial resources. While seeking to project the club forward we have to be realistic and accept that gates are going to fall short of expectations. One severe problem I have had to face in my two years as chairman is the expenditure on the stadium itself which, believe it or not, totals more than all my predecessors put together.

Unfortunately, none of that expenditure has been through choice; it has been dictated by the Safety of Sports Grounds legislation. The problem is really of trying to balance expenditure where the need be greatest, taking into account the monies available. The number one priority is for the club to possess its own training facilities and through local publicity, supporters will be aware that we are hopeful of a happy solution to that long-standing problem in the very near future.

The establishment of these facilities will be of far-reaching benefit to the club, of that I am convinced.

In the long-term one objective of the club must be to attract the best youngsters in the country; what Ipswich Town have achieved so successfully must be the yardstick for Blackburn Rovers.

A double-plus for the Rovers is the very close family atmosphere within the club which is possibly something the bigger clubs cannot provide.

We have to create something special to attract a youngster, while parents have to satisfy themselves that by joining Blackburn a boy's career is going to progress along the right lines.

Those people who know me will be well aware that I am the worst loser in the world. I want everybody in the club to be the same—and don't let anybody smile at me when we have lost!

It is important that the players feel just as passionately about the result of a game and the club itself.

Mind you, it's lovely when you win, especially away from home because the journey back is a rich experience. There used to be a practice of sitting players at one end of the coach and directors at the other. Not any more. We are all one team.

We have worked very hard to form close links with supporters and their branches. This is as it should be since the supporters are not just vital to the club, they are EVERYTHING to the club.

On a purely personal note . . . everybody in life believes he is busy. Imagine this—you have finished work at 5 o'clock and add to that the business of running a football club to get a pretty good picture of what it is all about.

On the question of support, there is no doubt that for a town of the size of Blackburn it stands comparison with any club in the land. Financially, unhappily, it isn't enough; but that is the fault of the system under which we play.

The game has to undergo some form of major surgery because if it does not, then it will no longer exist as we know it today. The monies being paid out every week are in excess of income and that can't carry on much longer. Wages must start to reflect the economic climate of the day.

I believe there is a feeling through the boardrooms of football that the day of reckoning on wages is not far away. We shall, I think, see a hardening of attitudes. We have already seen the number of professionals greatly reduced but this has not solved the problem.

Unless overall expenditure is contained then clubs will start going to the wall. One final word—the great strength of our club at present is that everybody is trying to pull together. With that kind of spirit we must succeed.



One of the pleasant aspects of a chairman's duties. David Brown presents Tony Parkes with the "Matchman of the Month" award prior to the start of the 80-81 season.

PROFILE

**Premier Motor Tours  
(Preston) Ltd,  
New Central Bus Station,  
Preston. Tel. 53626.**

# PREMIER LUXURY COACHES

Rovers have V.I.P. Treatment, and so will you when you travel with PREMIER.

12 to 53-Seater. Luxury Coaches available for Private Hire as well as Executive Coaches – for example:

- \* Your local team's away games
- \* Organised sporting tours within the U.K. and Europe
- \* Your works or social club outings

PLUS We operate a selection of Shortbreak Holidays –

3 Days Jersey; 3 Days London; 3 Days Edinburgh; 3 Days Wieve Beer Festival; 4 Days Paris; 4 Days Hamburg; 5 Days Normandy; 5 Days Belgium; 5 Days Jersey

on which we are offering ONE FREE PLACE with every 10 persons booked together.

**All these and many more variations of travel can be booked through PREMIER.**



# ACTION

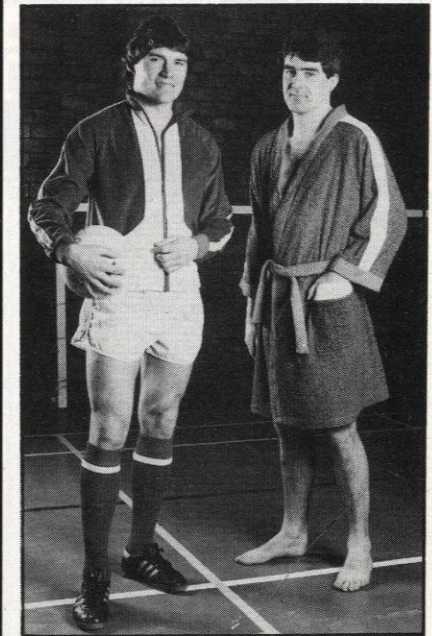
REPLAY REPLAY

REPLAY REPLAY



From the word go last Wednesday's Cup tie was an all-action spectacular and all evening Peter Shilton's performance was rubber stamped "England No. 1".  
**Top left:** Early action as John Lowey makes the challenge to baulk the Nottingham 'keeper. Glenn Keeley finished the move with a fine header only to see his effort disallowed by the referee.  
**Bottom left:** Action late in the second half as Simon Garner defies the challenge of David Needham to send in a fierce shot which brought about the 'Save of the Game' from Peter Shilton.  
**Above:** John Lowey shows the pace to get to the byline with John Robertson 'huffing and puffing' always a stride behind.

**FOLLOW THE ROVERS...FOR STYLE**



Whatever the love of the game, Football, Tennis, Swimming, Badminton or Squash, you can improve your teams appearance with sportswear from Altex International.  
 You can also purchase these top quality leisurewear items, and embroidered Rovers Towels from the Club Souvenir Shop.

**ALTEX**  
 DARWEN 73678

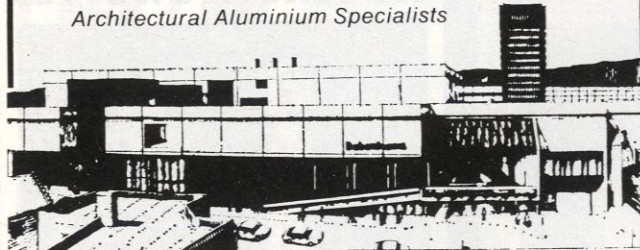
**SCORE EVERY TIME**

Manufacturers of Robes, Tops and Towels to many leading Hotels, Swim Clubs, Public Authorities and Mail Order Firms.



## S.G. ALUMINIUM LTD.

Architectural Aluminium Specialists



York Street Works, Oswaldtwistle,  
Accrington, Lancs, BB5 3NU.  
Telephone 36006/35432 (STD 0254)

- \* MANUFACTURERS AND INSTALLERS OF ARCHITECTURAL ALUMINIUM SYSTEMS
- \* SHOP AND OFFICE FRONTS
- \* 1040 SLIDING UNITS
- \* FACING SYSTEMS
- \* CURTAIN WALLING
- \* WINDOW SYSTEMS
- \* PATIO SLIDERS

S. G. ALUMINIUM are associated with many leading companies and are now able to supply direct to the householder: Aluminium Window Frames with the Isolok Thermal Barrier, Aluminium Residential Doors, Patio Sliding Doors, Porches and Secondary Double Glazing Systems.

Call and see our showroom or telephone for further details.

We are Associate Members of the St. George Glass Group of Companies, who are in themselves Glass Merchants, Glazing Contractors and Double Glazing Specialists.

Associated Companies:

### ACCRINGTON GLASS WORKS

44-46 Cedar Street, Accrington.  
Telephone 36369/31381.

### ST. GEORGE GLASS CO.

103 Whalley Road, Clitheroe.  
Telephone 22522.

Also Branches at Bolton, Bury and Leigh.



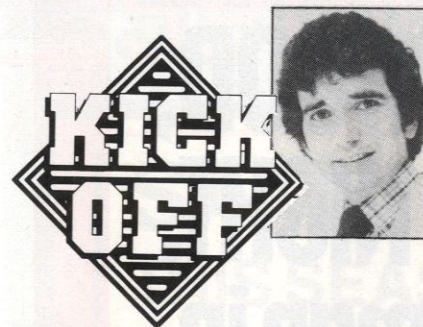
### UNITED THEY STAND IN PEPSI I TOP SPOT: LEICESTER ROAR AWAY IN PEPSI II

DESPITE their position in the League, Manchester United had made little impact in the Pepsi Golden Goals campaign — until Saturday. Their 5-1 away thrashing of Sunderland gives them 13 Pepsi points and an early lead in the chase for November's £1,000 prize in Pepsi I. Swansea lie second after their superb 3-2 victory at Portman Road and move up to third spot in the season's table where only two points separate them from leaders West Ham.

Leicester made a bright start to the month in Pepsi II, knocking in four goals at The Valley to give them 11 points and a four point lead over Cardiff. Although Leicester jump into third place overall, leaders Luton are 21 points ahead of them, with Watford lying second.

In Pepsi III high-scoring Exeter celebrated their £1,000 October award with another sparkling display in their 4-3 home win over Reading. But, with away goals counting double, Reading are actually joint top with Brentford for November. Exeter continue to dominate the season's table and are now 10 points clear of Millwall with Bristol Rovers and Gillingham trailing a further four points behind.

Colchester and Peterborough, with 18 and 16 points respectively, have both made great starts to November in Pepsi IV. Colchester have also regained the season's lead, seven points ahead of Bradford City, with Bury in third place.



THE VOICE at the other end of the phone was genuinely surprised. Not one Sunday newspaper had linked him with another player. According to the Sundays, Manchester United's manager, Ron Atkinson, was not about to swoop into the transfer market. "Amazing", he told me, "that really is the first time it's happened since I took over at Old Trafford."

He was right. Big Ron and I normally have a chat on Sunday mornings, prior to MATCH TIME and I couldn't remember a previous week when I wasn't asking him to confirm the latest piece of speculation. The week before one of the papers had suggested he was about to sign Larry Lloyd, Wigan's player-manager, and centre-half. "That was ridiculous", he laughed. "After that who knows what to believe. The only thing that was really annoying, however, was that no-one checked the rumours with me. Had they done so, that story would never have appeared." John Bond of Manchester City has also had his problems with the Press in recent weeks. Bondie says that he was mis-quoted. Whatever the outcome, I wouldn't be surprised if Messrs Bond and Atkinson try and play it low profile for a while — but not for long!

In view of former Wigan assistant manager, Fred Eyre's allegation that Larry Lloyd is too tough with his players, I was interested to see Larry's choice for his new assistant — Chris Lawler. Chris is one of the most gentle men ever to kick a football — and together they will form the ingredients of a classic managerial partnership — the nice guy and the hard man. Brian Hall once told me that players needed two things — one: for someone to kick them up the backside; two: for someone to provide a shoulder to cry on. Brian longed to go into management with Tommy Smith. I wonder what Smithy's role would have been, or will be, because they sound like a combination that might appeal to quite a few clubs.



Fred Eyre



### Schools Football

On Tuesday next, the 17th November the Blackburn and Darwen under 15's will be hoping to further their interest in the English Schools 'Gillette' Trophy. The venue is here at Ewood Park and the fourth round tie against Chester kicks off at 7.00 p.m. The Nuttall Street Stand and Enclosure (Blackburn End) will be open and prices are as follows: Seating 50p, Standing 40p adults, 20p children. The schools side always provide an entertaining game, so don't forget on Monday come down to Ewood for a 7.00 p.m. kick-off.

### Mascot today

Our mascot today will be joined by the Luton Town mascot Stephen Gray. Twelve year old Stephen, a member of the junior Hatters will exchange Pennants with Garth Hodgkinson prior to the game.

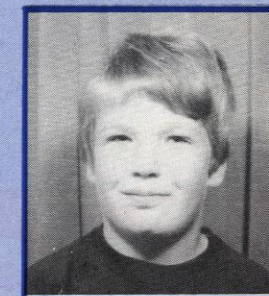
### Penalty Competition

Schools taking part this afternoon are Billinge and St. Edmund Arrowsmith. The first round ties are almost completed and we will review the teams who have progressed in the competition in the Norwich City programme.

### Match Mascot

GARTH HODGKINSON Age: 11  
Hobbies: Football, Chess, Cricket and Swimming

Favourite Rovers Player:  
Noel Brotherston



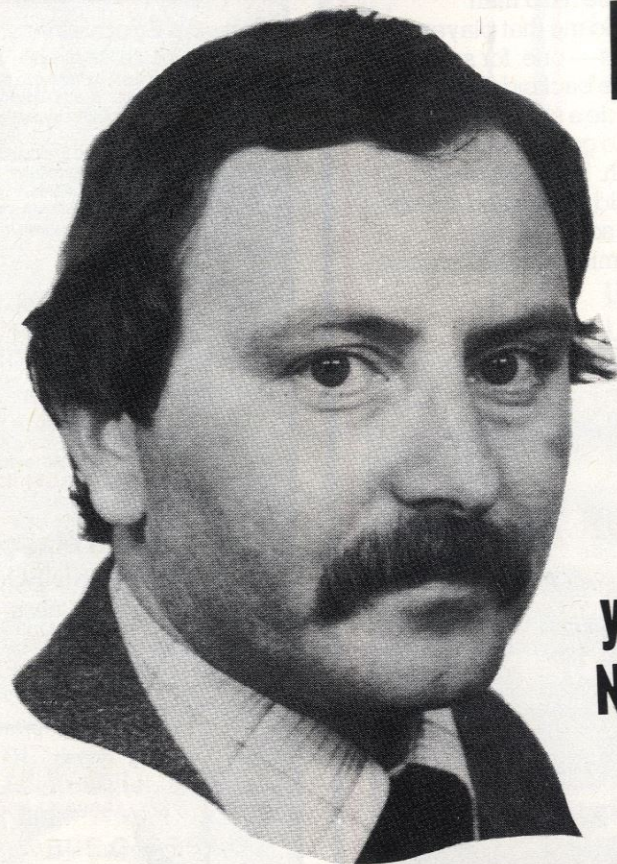


**ALL THE NEWS FROM EWOOD,  
AS IT HAPPENS ~ EVERY NIGHT.**

**by the man in  
the know**

**PETER  
WHITE**

**you'll find out first from the  
NUMBER ONE sportswriter  
in Lancashire's  
NUMBER ONE paper.**



LANCASHIRE EVENING  
**Telegraph**

*Full of  
the life  
you live*

**SPONSORSHIP 81/82**

**SAVE  
THIS SEASON  
ON A NEW FORD  
OR QUALITY USED  
CAR**



**CONTACT THE WINNERS, TODAY'S MATCH SPONSORS**

**COWIES** OF BLACKBURN

**Today's Kit Sponsor**

**B AND B CAR SALES**

GRIMSHAW PARK GARAGE  
BLACKBURN  
Telephone 37943

**TODAY'S BALL  
SPONSOR**

**GEORGE WALSH  
& CO.**

Electrical Contractor

9 Mill Lane  
Blackburn  
Tel. 51941

N.I.C.E.I.C. Approved



FACTS, FIGURES & FIXTURES

FIRST & SECOND TEAMS 1981/82

Blackburn Rovers 1st Team  
Fixtures for Season 81/82

Date	OPPONENTS	F	A	Att.	Pts	Pts
August 29	SHEFFIELD WED.	0	1	15,182		
September 1	Shrewsbury T.	2	1	4,220	3	
September 5	Charlton Athletic	0	2	6,140	3	16
September 12	ORIENT	2	0	7,043	6	11
September 19	Cardiff City	3	1	4,253	9	7
September 23	CAMBRIDGE UNITED	1	0	7,518	12	4
September 26	LEICESTER CITY	0	2	8,925	12	6
October 3	Queen's Park Rangers	0	2	9,541	12	12
October 7	SHEFFIELD WED. LC2 (1L)	1	1	7,900		
October 10	BARNLEY	2	1	10,522	15	9
October 17	Derby County	1	1	10,572	16	8
October 24	Grimsby Town	1	1	7,159	17	8
October 27	Sheffield Wed. LC2 (2L)	2	1	13,087		
October 31	WREXHAM	0	0	8,159	18	9
November 7	Crystal Palace	2	1	9,452	21	8
November 11	NOTTINGHAM F. LC3	0	1	14,752		
November 14	LUTON TOWN					
November 21	Watford (FA Cup 1)					
November 25	SHREWSBURY TOWN					
November 28	NORWICH CITY					
December 2	League Cup (4)					
December 5	Newcastle United					
December 12	ROTHERHAM UNITED (FA Cup 2)					
December 19	Chelsea					
December 26	OLDHAM ATHLETIC					
December 28	Bolton Wanderers					
1982						
January 3	FA Cup (3)					
January 9	CHARLTON ATHLETIC					
January 13	League Cup (5)					
January 16	Sheffield Wednesday					
January 23	FA Cup (4)					
January 30	CARDIFF CITY					
February 3	League Cup (SF1)					
February 6	Orient					
February 10	League Cup (SF2)					
February 13	Q.P.R.					
February 20	FA Cup (5)					
February 27	Leicester City					
February 27	Barnley					
March 6	DERBY COUNTY					
March 13	FA Cup (6)					
March 13	GRIMSBY TOWN					
March 20	League Cup Final					
March 20	Wrexham					
March 27	CRYSTAL PALACE					
April 3	Luton Town FA Cup (SF)					
April 10	Oldham Athletic					
April 12	BOLTON WANDERERS					
April 17	WATFORD					
April 24	Norwich City					
May 1	NEWCASTLE UNITED					
May 4	Cambridge United					
May 8	Rotherham United					
May 15	CHELSEA					
May 22	FA CUP FINAL					

Home Fixtures in CAPITALS

League Division Two

(including 7th November)

	P	W	D	L	F	A	Pts
Luton Town	13	10	1	2	31	13	31
Watford	13	9	1	3	21	12	28
Queens Park Rangers	13	7	2	4	20	13	23
Sheffield Wednesday	13	7	2	4	13	13	23
Barnley	13	7	1	5	19	12	22
Oldham Athletic	13	6	4	3	21	16	22
Cambridge United	13	7	0	6	19	16	21
<b>Blackburn Rovers</b>	<b>13</b>	<b>6</b>	<b>3</b>	<b>4</b>	<b>14</b>	<b>13</b>	<b>21</b>
Leicester City	13	5	5	3	18	13	20
Chelsea	13	6	2	5	17	19	20
Charlton Athletic	13	5	3	5	18	18	18
Cardiff City	13	5	2	6	17	22	17
Norwich City	13	5	2	6	14	20	17
Newcastle United	13	5	1	7	15	14	16
Crystal Palace	13	5	1	7	11	11	16
Rotherham United	13	4	3	6	19	17	15
Derby County	13	4	3	6	17	22	15
Shrewsbury Town	13	4	3	6	13	19	15
Grimsby Town	13	4	3	6	14	22	15
Wrexham	13	3	2	8	11	16	11
Bolton Wanderers	13	3	1	9	11	22	10
Orient	13	2	3	8	8	18	9

First Team Appearances  
and Goalscorers 1981-82

	Football League	Goals	League Cup	Goals
Gennoe	13		3	
Branagan	12		3	
Rathbone	13		3	
Speight	4		1	
Keeley	13	2	3	
Fazackerley	11		3	
Hamilton	9(1)		1	
Miller	13		3	
Burke	13		3	
Lowe	8(3)	1	3	1
Crawford	8	2		
Brotherston	13	1	3	
Stonehouse	7(5)	2	1(2)	
Williamson	-(1)			
Garner	6(2)	5	3	2
Comstive	-(1)		-(1)	
O.G.		1		

Substitute shown in brackets ( )

Blackburn Rovers  
Central League  
Fixtures

Date	Day	OPPONENTS	F	A
August 29	Sat.	Liverpool	0	6
September 2	Wed.	PRESTON NORTH END	1	2
September 5	Sat.	SHEFFIELD WEDNESDAY	1	5
September 8	Tues.	Manchester City	0	3
September 12	Sat.	Bolton	3	0
September 19	Sat.	LEEDS UNITED	2	2
September 29	Tues.	Burnley	2	0
October 3	Sat.	MANCHESTER UNITED	2	2
October 10	Sat.	Derby County	1	1
October 17	Sat.	SHEFFIELD UNITED	0	1
October 24	Sat.	WOLVES	3	4
October 31	Sat.	Coventry City	1	1
November 7	Sat.	BLACKPOOL	1	2
November 10	Tues.	Bury	1	2
November 14	Sat.	Aston Villa		
November 21	Sat.	STOKE CITY		
November 24	Tues.	Preston North End		
November 28	Sat.	Everton		
December 5	Sat.	NOTTINGHAM FOREST		
December 8	Tues.	Huddersfield Town		
December 19	Sat.	MANCHESTER CITY		
December 26	Sat.	Newcastle United		
December 28	Mon.	BURNLEY		
1982				
January 9	Sat.	Sheffield Wednesday		
January 16	Sat.	LIVERPOOL		
January 27	Wed.	Leeds United		
February 6	Sat.	BOLTON		
February 13	Sat.	Manchester United		
February 20	Sat.	BURY		
February 27	Sat.	DERBY COUNTY		
March 3	Wed.	Blackpool		
March 5	Fri.	Sheffield United		
March 13	Sat.	Wolves		
March 20	Sat.	COVENTRY CITY		
April 3	Sat.	ASTON VILLA		
April 10	Sat.	NEWCASTLE UNITED		
April 17	Sat.	Stoke City		
April 24	Sat.	EVERTON		
May 1	Sat.	Nottingham Forest		
May 5	Wed.	WEST BROMWICH A.		
May 8	Sat.	HUDDERSFIELD TOWN		
		To be arranged		
		West Bromwich Albion		

Central League

(including 11th November)

	P	W	D	L	F	A	Pts
Liverpool	12	9	3	0	30	8	21
Nottingham Forest	13	9	2	2	30	10	20
Derby County	14	8	3	3	23	16	19
Everton	13	9	0	4	33	9	18
Wolverhampton W.	14	8	2	4	29	24	18
Sheffield United	14	6	4	4	15	11	16
Newcastle United	13	6	4	3	18	15	16
Stoke City	14	4	8	2	17	15	16
Manchester City	15	5	5	5	19	22	15
Coventry City	13	4	6	3	17	15	14
West Bromwich Albion	11	5	3	3	15	13	13
Blackpool	13	5	3	5	17	18	13
Aston Villa	12	4	4	4	17	14	12
Bury	12	5	2	5	15	15	12
Preston North End	12	5	1	6	24	26	11
Manchester United	13	3	3	7	13	17	9
Leeds United	14	3	3	8	11	18	9
Sheffield Wednesday	15	3	3	9	21	29	9
<b>Blackburn Rovers</b>	<b>14</b>	<b>2</b>	<b>4</b>	<b>8</b>	<b>18</b>	<b>31</b>	<b>8</b>
Burnley	12	2	3	7	12	27	7
Huddersfield Town	12	2	2	8	8	23	6
Bolton Wanderers	11	1	2	8	9	35	4

Central League  
Appearances and  
Goalscorers 1981-82

	App.	Goals
Butcher	14	
Greenwood	1	
Williamson	13	1
Barker	14	1
Walters	14	1
Byrom	14	
Burke T	3	
Comstive	12	3
Graham	8(4)	4
Garner	7	2
Patterson	3(5)	
Finch	2(1)	
Stonehouse	3	
Gallacher	2(2)	
Bell	10(1)	
Lightbown	10	1
Mather	5(1)	
Lowe	2	2
Parkes	7	
Speight	1	
Hamilton	1	
Crawford	4	3
Busby	4	

Substitute shown in brackets ( )

GSA  
THE NEW 100 MPH  
CITROËN HATCHBACK

It's the latest addition to the  
Citroën GS range.

A car with a new 1300cc engine  
that can reach 100 m.p.h.

A car with a 5-speed gearbox.  
A car with a hatchback that's  
roomy enough for family-size  
luggage.

A car that enables you to survive  
a high-speed blow-out, even on  
corners, because it has the unique  
Citroën hydropneumatic  
suspension.

A car that's waiting to be test  
driven.

Right here, at this address.



Call or Ring—

**SAVOY (Blackburn) LTD.**

Toll Bar Garage, Blackburn

Telephone : 661616.

CITROËN ^ GSA



## Pied Piper Textiles

have great pleasure in producing these family winners for the Rovers. Bring the family to the official club shop and choose from a winning selection of leisurewear, made in England.



**Pied Piper Textiles**

(Langho) Limited

79 Church Street, Great Harwood,  
Lancashire, BB6 7QB.

Telephone Great Harwood (0254) 887000



*Have a Good Day*

# FOR THE RECORD

**Saturday, 7th November, 1981**

League Division Two  
Crystal Palace 1, Blackburn Rovers 2  
(Garner 2)

Team: Gennoe, Branagan, Rathbone, Stonehouse, Keeley, Fazackerley, Miller, Burke, Lowey, Garner, Brotherston.  
Substitute: Comstive.

Central League  
Blackburn Rovers 1, Blackpool 2  
(Walters)

Team: Butcher, Williamson, Byrom, Parkes, Walters, Bell, Lightbown, Barker, Busby, Graham, Mather. Substitute: Patterson (replaced Mather).

**Tuesday, 10th November, 1981**

Central League  
Bury 2, Blackburn Rovers 1  
(Graham)

Team: Butcher, Williamson, Byrom, Parkes, Walters, Bell, Lightbown, Barker, Busby, Graham, Mather. Substitute: Patterson (replaced Bell).

**Wednesday, 11th November, 1981**

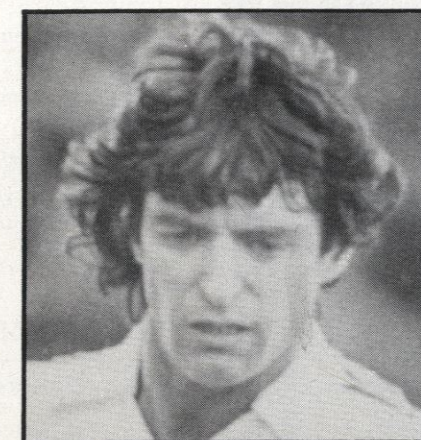
Football League Cup Third Round  
Blackburn Rovers 0, Nottingham Forest 1

Team: Gennoe, Branagan, Rathbone, Stonehouse, Keeley, Fazackerley, Miller, Burke, Lowey, Garner, Brotherston.  
Substitute: Comstive.

# IN RESERVE

AFTER two games in the last week, one at home (versus Blackpool) and one away (versus Bury) it would be very pleasing to write in these notes that we had won our first home fixture and had gained several valuable points from the two games, but once again, it was a case of could have! Should have! It was Christmas coming early in November, with presents and points for both the opposing sides, with at least 3 vital points thrown away. Once more we were let down by lapses in defence, an obvious lack of concentration was apparent when we conceded three of the four goals against us. It is vital that we hold our concentration for NINETY MINUTES and stop giving away goals. Since our hectic (to say the least) start to the season, when we were well beaten by Liverpool (6-0) and Manchester City (3-0) we have only failed to score in one other game (Sheffield United), so it goes without saying if we stay organised defensively, keep our concentration and cut out our silly mistakes, we must be in

with a great chance of picking up point/points EVERY game. In our home game against Blackpool, in the first half we were put under a lot of pressure mainly due to the experience of Willie Morgan in midfield and the role he was asked to play; one of playing very deep and creating space in our midfield.



Willie Morgan Scottish International.

We changed our tactics in the second half and coped very well, created chances which we did not take and had the points snatched away in the last five minutes.

Our game against Bury was a more physical encounter and although we were under pressure for long periods of the game we handled it very well. The extent of the pressure could be measured by the guide line of Bury's 20 to 25 corners to our 3 or 4, but as I previously stated we withstood all this pressure and it was only two costly errors that let Bury in to take both points. We cannot keep giving away goals and points and expect our young players to gain any sort of confidence — a vital part of any player's make-up. Let us hope that as far as Blackburn Rovers Reserves are concerned the Season of Goodwill on the playing field has been and gone.

**JIM FURNELL,**  
Reserve Team Manager.



**SAXON INN**  
'Your Key To Comfort'

MOTOR HOTEL A.A.\*\*\* R.A.C.

## THE SADDLE ROOM RESTAURANT For the Best Food at Realistic Prices

A LA CARTE & TABLE D'HOTE MEALS

Lunch 12.30 – 2.30 p.m. Dinner 6.30 – 10.30 p.m.

Live Music Monday to Friday evening to further your enjoyment.

**SATURDAY: Intimate Dinner Dances to the Mike Taylor Sound**  
**TRADITIONAL SUNDAY LUNCH** — Reductions for Children

**THE CARVING TROLLEY** — Introduced for that special Business Lunch or Dinner —  
Snacks and Sandwiches available at the bar Daily and all Day

FOR TABLE RESERVATIONS TELEPHONE BLACKBURN 6444 1.



# 30,20&10 YEARS AGO

## THIRTY YEARS AGO

WE GAINED our second home win in nine attempts on November 24, 1951 when beating Leicester 2-1, helped by an own goal by BALDWIN to add to an EDDIE QUIGLEY goal after ARTHUR ROWLEY had given the visitors an early lead. Unfortunately for us Coventry beat Southampton 3-1, and so we were still three points adrift at the bottom of Division Two. Luton dropped a home point in a 1-1 draw with Rotherham, JACK TAYLOR getting their goal, but they were still handily placed three points behind Second Division leaders Sheffield United. Portsmouth continued to lead the way in Division One, DOUG REID getting both goals in a 2-0 win over Spurs and they stayed a point ahead of Arsenal, who beat Bolton 4-2, with DOUG LISHMAN getting a hat-trick.

## TWENTY YEARS AGO

WE SLIPPED to our third defeat in four games when going down 2-0 here to Fulham in a First Division game on November 25, 1961. After a goalless first half MAURICE COOK and a MATT WOODS own goal settled the issue for the visitors, the team being: BLACKBURN: Else; Taylor, Newton; Clayton, Woods, McGrath; Douglas, Lawther, Pickering, Byrom, Ratcliffe. With Chelsea beating W. B. Albion 4-1 we slipped to the bottom of Division One, while at the top Burnley and Ipswich held on to the first two places with 3-goal away wins at Old Trafford and Cardiff respectively. Luton picked up a useful point in a 2-2 draw at Sunderland with ALAN ASHWORTH and DENNIS PACEY on the mark while BRIAN CLOUGH netted one of the Sunderland goals. The 'Hatters' were in fourth position with Liverpool, Orient and Rotherham ahead of them.

## TEN YEARS AGO

WE FOUND ourselves involved in a first round F.A. Cup-tie on November 20, 1971 and we struggled a little against Port Vale who held their own in the first half here and then went ahead with a tremendous free-kick from BRIAN HORTON, who may well be in the Luton side here today. This was after 67 minutes and two minutes later DEREK FAZACKERLEY moved up to equalise. The Rovers team that day was: Jones; Heaton, Wilson; Farrell, Fazackerley, Wood; Price, Garbett, Parkes (McDonald), Arentoft, Field, and the attendance 6,947. BRIAN HORTON again proved the villain of the piece when getting two of the goals in Vale's 3-1 win in the midweek replay. Luton meanwhile won their Second Division game 1-0 at Watford with DON GIVENS on the mark to keep them three places off bottom spot.

# BRANCH NEWS

GOOD news for all the branches is the acceptance of the Rovers Supporters Association by the National Federation of Football Supporters' Clubs. Previous attempts over the years to gain admission to the Federation had failed and the 'Blue and White' Association was the only recognised supporters body connected with Blackburn Rovers. Officially recognised by the club and now by the Federation is a sure sign of how the branches have progressed in a comparatively short period of time.

## 'MISS FOOTBALL SUPPORTER' COMPETITION

This competition organised each season by the National Federation of Supporters Clubs is sponsored this year by PONTINS HOLIDAYS.

There will be seven heats taking place on a Regional basis during the next few months. Each heat winner will receive a U.K. Holiday Voucher worth £150 and automatic entry into the National Final being staged in Weymouth next June. If anyone has aspirations in representing the Rovers, please forward details to the Commercial Manager and don't forget a photograph...

## PROGRAMME FAIR

Branch members interested in programme collection should note that tomorrow Sunday 15th November, the Manchester United Programme Fair and Exhibition will be held in the Europa Suite, Old Trafford, from 10-30 a.m. to 3-30 p.m.

## TONY PARKES EVENING

Chorley Branch are holding an indoor games evening in aid of the 'Tony Parkes Testimonial' on Monday next at the Towneley Arms, Chorley. Everyone is welcome and names can be put forward on the evening for the various competitions. Tony will be supported on the night by various team members and doors open at 8-00 p.m.

# Sports Pink

Your guide to all local and national sports-

EVERY SATURDAY

LANCASHIRE EVENING TELEGRAPH

# ROVERS ON THE ROAD

## GOING BY CAR TO... WATFORD

It's a return to the League programme for our next away fixture and we visit a team very much in form, Elton John's Watford.

Leave Blackburn on the familiar route joining the M6 at Samlesbury. Take the southbound carriageway, travelling the length of the M6, merging with the M1 Motorway at junction 19. Proceed south to junction 6, leaving the motorway following signs for Watford A405/A41 and A4111. Pick up signs for Slough A412 and after almost a mile turn left into Harwoods Road. At the T junction turn left into Vicarage Road for Watford Football Club. There is only limited street parking adjacent to the ground.

Seats for the game can be purchased now from the Ticket Office, Watford F.C., Vicarage Road Stadium, Watford, Herts., prices as follows: East Stand £3-50 and £3-00. West Stand (uncovered) £2-50. There are no reductions.

On the day admission to the terraces is £2 and again there are no reductions. The match programme will cost you 30p.

★ ★ ★

## OFFICIAL AWAY TRAVEL CLUB

In conjunction with Ribblesdale Travel the Away Travel Club are operating coach transport to Watford. Full details are as follows:

## WATFORD

Saturday, 21st November

Ewood Park 8-55 a.m.

Chorley Bus Station 9-15

Fare £7-00 No reductions.

Members are requested to maintain the strict code of discipline previously observed and Travel Club rules will still apply.

Bookings can still be made at the Club Shop in Market Avenue every day except Thursday and any morning at the Club Shop on Bolton Road.

On home team matchdays Ribblesdale Travel operate a service for supporters who travel into Blackburn from the Hyndburn district. The coach leaves Rishton at 1-50 p.m. and return prices are 90p for adults and 45p for children. Full details of the many boarding points can be obtained by ringing Blackburn 57311.

# PALACE HIRE

## Lock Mill Service Station

Bolton Road, Blackburn

*"In a league  
of it's own"*

Choose your vehicle from our extensive range of ESCORTS, CORTINAS, TRANSITS, LUTONS and PICKUPS. All fitted with radios, 1979/80 Models, at competitive rates.

AA & Fully Comprehensive Insurance available.

Consult the Experts -

## Telephone

# 670522 52509

Editor: Geoff Butterfield Pictures: Jack Barry



# TEAM CHECK

## BLACKBURN ROVERS

1 Terry GENNOE	7 Ian MILLER
2 Jim BRANAGAN	8 Marshall BURKE
3 Mike RATHBONE	9 John LOWEY
4 Kevin STONEHOUSE	10 Simon GARNER
5 Glenn KEELEY	11 Noel BROTHERSTON
6 Derek FAZACKERLEY	12

## LUTON TOWN

1 Jake FINDLAY	7 Ricky HILL
2 Kirk STEPHENS	8 Brian STEIN
3 Mark AIZLEWOOD	9 Steve WHITE
4 Brian HORTON	10 Pasquale FUCCILLO
5 Clive GOODYEAR	11 David MOSS
6 Mal DONAGHY	12 Godfrey INGRAM

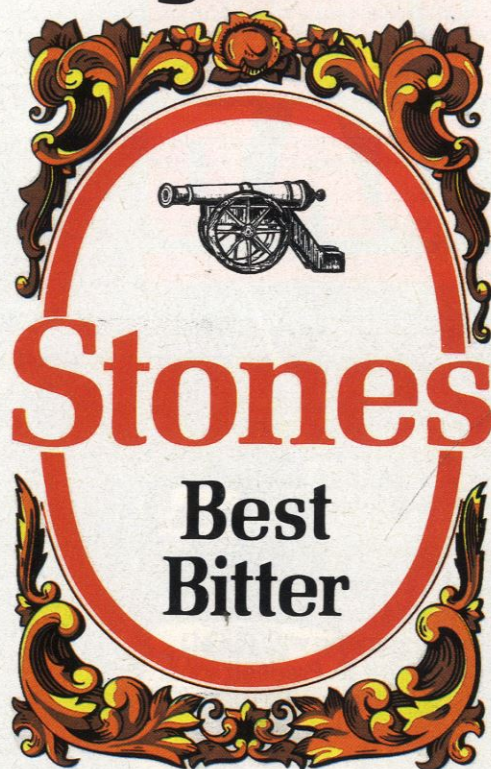
**Referee:** T. Mills (Barnsley)

**Linesmen:** L. R. Dilkes (Mossley) Red Flag  
A. R. Morton (Thornton-Cleveleys) Yellow Flag

### Next Game at Ewood

Central League  
Stoke City, Saturday, 21st November. Kick-off 3p.m.

Goes down  
great



from

**Bass North West**