

THE HATTER

Official Matchday Magazine Price 50p

FOOTBALL LEAGUE DIVISION TWO

Saturday 31st October 1981

Kick-off 3.00 p.m.

LUTON TOWN v CRYSTAL PALACE

TODAY'S MATCH
IS SPONSORED BY:

Wallspan
Bedrooms

INSIDE TODAY:

David's Diary page 4

Junior Hatters pages 10 and 11

Flashback page 14

Save Our Soccer page 25

Today's opponents pages 28 and 29



LUTON TOWN FC



70-72 Kenilworth Road

Luton

Tel: 411622

Season 1981-82

Chairman:

Denis Mortimer

Directors:

R. L. Banks, D. J. Evans
E. S. Pearson, H. Richardson
R. J. Smith, J. R. Yates
J. R. Smith (Chief Executive)
D. J. Pleat (Team Manager)

President:

T. Hodgson

Vice-Presidents:

J. A. C. Bain (Deputy President)
Lord Hill, Sir Reginald Pearson OBE,
A. J. Berry, J. B. Brent,
B. Cole, B. England,
N. S. Fookes, G. B. Holland,
C. Holloway, I. E. Holmes,
C. J. Hudson, R. Larkinson,
L. Leppington,
Eric Morecambe OBE, R. Safranek,
E. Waller, R. Unwin

Administration:

Club Secretary:

John Wilkinson

Assistant Secretary:

Bill Butler

Project and Advertising Manager:

Mike Beevor

Commercial Manager:

Mike Hardwicke

Catering Manager:

Clive Hustwitt

Youth Development Officer:

Colin Ball

Travel Organiser:

Mrs C. Ball

Auditors:

Arthur, Young, McClelland,
Moore & Co.

Photographer:

Gareth Owen

Playing:

Coaches:

David Coates, John Moore and
Trevor Hartley

Physiotherapist:

John Sheridan

Doctor:

W. A. C. Berry MBBS

MATCH PREVIEW

Welcome to another home game — and a welcome to our visitors Crystal Palace, who make the short trip from London.

You can find details of today's opponents on pages 28 and 29.

We also welcome today our young mascot and escorts who will join the teams on the pitch before the kick-off under the scheme launched by the Junior Hatters Club. Their news today is on pages 10 and 11.

There's plenty of reading in today's matchday magazine. Around the Town appears on pages 16 and 17 and David's Dairy on page 4. And if you want to sample some of the goals in our recent 6-0 victory over Grimsby, turn to pages 26 and 27.

By the time you read this today, we will know whether we were successful in reaching the third round of the Football League Cup at Wrexham last Tuesday night.

If we were, details of our next opponents and ticket arrangements will be broadcast this afternoon and will also appear in the local press.

Some of our visitors from Fleet Street at the last home match found it difficult to believe their own eyes when they saw the final of a cricket match being played as pre-match entertainment before the Grimsby match.

The Sunday Times man was so enchanted it became part of his soccer match report!

An expression of thanks to both teams would be normal courtesy, but they both deserve more than just a mention. Luton United, holders of the knock-out trophy in the Luton and District Midweek cricket League, completed a double when they beat Luton Five Star in the final of the Luton Town FC Six-a-side tournament.

The very fact that the game was played at all is a tribute to the determination and sportsmanship of both teams, and they well deserved the appreciation the crowd showed.

Each match represents a lot of work. Both teams sent squads down to the ground on Saturday morning to lug the heavy matting pitch into position.

A fortnight ago the morning was cold, grey and not very promising, but groundsman Dick Wassell thought the turf was able to stand the wear and the two teams decided they would put up with wintry conditions.

They had barely laid the pitch when the rain started, and an hour before the cricket was due to start it seemed certain that the game would have to be postponed for a second time.

That would probably have meant a delay until next May, and both teams decided to forget the conditions and get on with the game.

Bowlers could hardly hold the ball, and batsmen needed gloves for warmth more than for protection, and we suspect it is the first time cricket has ever been played in mid-October in pouring rain under floodlights.

So thanks very much, Luton United and Luton Five Star. And thanks also to all who made the tournament possible, including Dick Wassell.

The Evening Post-Echo and Bernards World of Sport sponsored it, and the considerable amount of paperwork involved right through the tournament, starting way back last July, was handled by the Luton Midweek Cricket League.

On behalf of Luton Town, we thank all who helped, and hope that supporters appreciated the efforts made.



PERSONALITY PROFILE



A personal view of some of the great names of Luton Town.

By BRIAN SWAIN

If we finally achieve promotion this season, I shall be among the happy thousands celebrating a hat-trick spread over 26 years. It will be the third time Luton Town have made it to Division One, and will provide the third list of local names to go down in Kenilworth Road history.

The one-season flirtation with top level soccer in the 1974-75 season still leaves me with more pain than pleasure. We learned the harsh lesson that if you can't score goals you can't stay up.

Every manager in Britain is on the look-out for something special in the way of strikers, and I wonder what they would pay for a carbon copy of the best Luton Town goalscorer I have ever seen?

His name was not Malcolm Mac-

donald, brilliant though Supremac was. My idol as a teenager on the terraces was a man whose explosive finishing was so reliable we used to start cheering before the keeper knew the shot was on its way.

'Give it to Gordon' was the cry whenever the Town defence won the ball and set up counter-attacks.

For quicksilver Gordon Turner had a highly specialised working area. In the days when football teams had two full-backs, three half-backs and five forwards, Gordon would inevitably arrive at a spot near the angle of the penalty area in time to meet a pass from any direction and nine times out of ten would thunder his shot with uncanny force and accuracy into the top corner of the net.

Bert Mitchell, Supremac and one or two others might possibly have hit the ball harder. But none hit it at such power, with such accuracy.

In 15 years at Kenilworth Road, Turner scored 243 League goals, and I doubt if that record will ever be beaten. And when I remember the heady days of 1955 when we reached the First Division for the first time in our history, Gordon Turner is the man I recall most vividly.

He played in every League game in the promotion season and scored 32 times. Normally that sort of total would be enough to make a man the leading scorer in the country, but that year the title was denied Turner by a centre forward at Middlesbrough... Brian Clough.

Alas for Luton Town, Turner and his team-mates grew old together. The man who had been selected for the Football League's rep side, and as an English 'B' international was left out of the Town's FA Cup side at Wembley in 1959. (And I still think the decision was wrong.)

Gordon retired in 1964, and became a good friend to all local sports when he went into business. He'd help anyone if it was a case of aiding sport, and it made the tragedy all the harder to bear when we saw Gordon's health deteriorate.

He kept cheerful through a crippling nervous disease and the whole of football mourned when he died at the age of 46 nearly five years ago.

I don't suppose we shall ever see another as good as Gordon Turner in Luton Town colours. We hoped briefly a couple of years ago that Steve Turner might prove to be 'like father, like son'. That wasn't to be, but Steve had put the family record straight on one score in 1978. He played at Wembley, in the FA Vase Final for Barton Rovers.

GORDON TURNER IN ACTION



DAVID'S DIARY

There can be very little to criticise in our last game here. The players responded with a sound all-round team performance, the crowd urged the team on throughout and our visitors, Grimsby, continued with attractive approach play without ever resorting to doubtful tactics to stop our efforts. With that kind of crowd encouragement we can, I am sure, continue to satisfy.

Just consider how Steve White has emerged to play a prominent role in our side. Only 22, he was bought for a big fee by our standards and could not immediately displace Bob Hatton.

Not given an opportunity of a run, his confidence drained as he suffered criticism from all quarters, including the terraces. Slowly he has shown the character that is so vital in football — he has been a lonely man at times, always eager for extra training and desperate to show his real ability.

He has won his battle and I trust the terrace cheers will maintain an encouraging note when he and others falter, as they are only human. Everyone including myself, needs encouragement and backing if we are to get the maximum out of everybody.

A word of thanks to Richard Larkinson, whose contribution to our Grimsby success was much appreciated by all the players — a sparkling bottle of wine each. As you know we received a cheque from Pepsi-Cola before the game and we sincerely hope this idea of rewarding goal scoring will receive the recognition it deserves.

Since my last notes we have installed a Delta-float in the dressing room, which has



the effect of making the players feel totally relaxed. I am sure we are going to achieve maximum benefit from this aid and other clubs may well follow our ambition.

A real great man of football passed away recently. Fred Ford was a jovial, genial character who found some superb young players in his spells of managing, coaching or scouting at Bristol City, Bristol Rovers, Swindon and Oxford.

He spent his whole life wrapped up in football; totally dedicated without ever receiving the adulation or recognition that others may have achieved.

There was only one Fred Ford and everyone at Luton who knew this tremendous man would like to pass on to his family their deepest sympathies.

Enjoy today's game and let us continue to make sure that any reputation we may gain for playing good football is backed up by the same good words for our supporters behaviour.

DAVID PLEAT



Luton defender Mark Aizlewood can always provide consistency. Last season, he made 20 Second Division appearances for the Town in addition to three as substitute.

This term — before last Saturday — Mark had missed only one match and that was when he was named as sub in our home League Cup tie against Wrexham.

Our photographer Gareth Owen caught Mark in a relaxing mood at home with his wife Margaret whom he married two years ago.

COLOUR SHOT

IVOR HOLMES



LUTON 56622

R. W. UNWIN & CO LTD

Pharmaceutical and Fine Chemicals
and
Chemical Intermediates

Prospect Place
Welwyn, Herts
AL6 9EW

Tel: Welwyn 6441/2/3/4

FOR ALL YOUR BUILDING
AND DIY SUPPLIES GO TO

Graham Ford Ltd

Trading as Lockhart-Bennett

Willis-Dawson Ltd

Builders and Developers
Leighton Buzzard

Tel: Leighton Buzzard 372557

See how far your money goes when you travel with

TRAVEL CENTRE

Come in and get the best deal going
47 GEORGE STREET, LUTON
Tel: 421751

15a HIGH STREET NORTH, DUNSTABLE
Tel: 609677

J. F. MEADE LTD

Civil Engineering
Building Contractors
Plant Hire

14 Tennyson Road
Luton, Beds

Tel: 0582 287401/414759



Your Discount Choice

**LUTON SPORTS
PRESS LTD**

THE LOTTERY TICKET SPECIALIST

Tel: Luton 28757

Discounts on all Tyres and Exhausts
at



Manor Road, Luton. Tel: 410410
122-124 Leagrave Road, Luton. Tel: 37835
162-170 High Street South, Dunstable. Tel: 69913

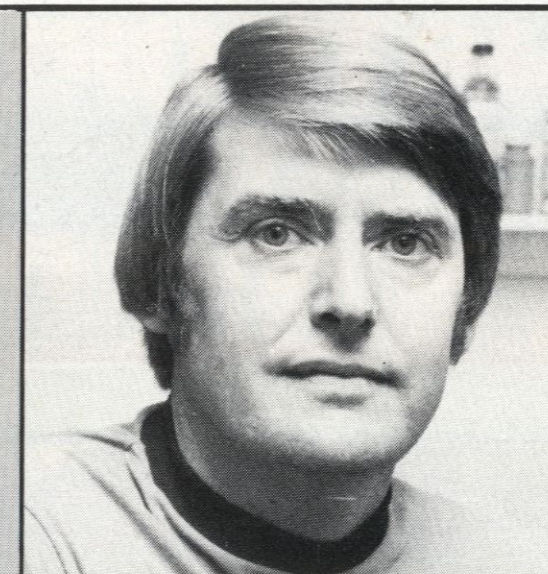
**Cleandustrial
Services Ltd**

The Professional Approach to
Your Cleaning Problems

84 Aldermans Hill N13

**MEDICAL
TOPICS**

with
JOHN SHERIDAN



Luton physio John Sheridan continues his series on medical treatment.

After spending the week in the treatment room, I consider that sitting in the dug-out on a Saturday, although enjoyable, it is a vital time for me.

I believe that a physio watching a game looks at it completely differently from anyone else. Where a manager and coaches are looking for the finer points of the game, I am looking for injuries occurring and, if possible, to see the actual incident where the player gets hurt.

This usually gives me a good idea of the type of injury and maybe the severity. When an injury does occur on the field it is essential that you are equipped to deal with whatever type of injury you get — which can range from a minor knock to a fracture or even worse.

I am very lucky in having the support of Dr Berry, the club doctor, to call on if a serious injury does occur. The days when the trainer and the magic sponge that healed all ills are gone. We know now that a sponge and bucket is not the answer to all our problems.

The main items I carry on to the pitch are a sterile pack containing four triangular bandages, various sizes of sterile dressings. This allows me to deal with fractures or any wounds that may occur.

An inflatable splint set can also be carried, antiseptic solution, cotton buds for minor cuts and grazes, butterfly sutures and pre-cut plasters, Lasonil and a cooling spray for bruises.

A word of warning, regarding cold spray — never use it unless very sure that it's only a minor knock and that you are not masking a more serious injury as a fracture.

To make up my kit I carry a roll of tape, scissors and a couple of bandages and a sponge soaked in antiseptic solution in a sterile bucket.

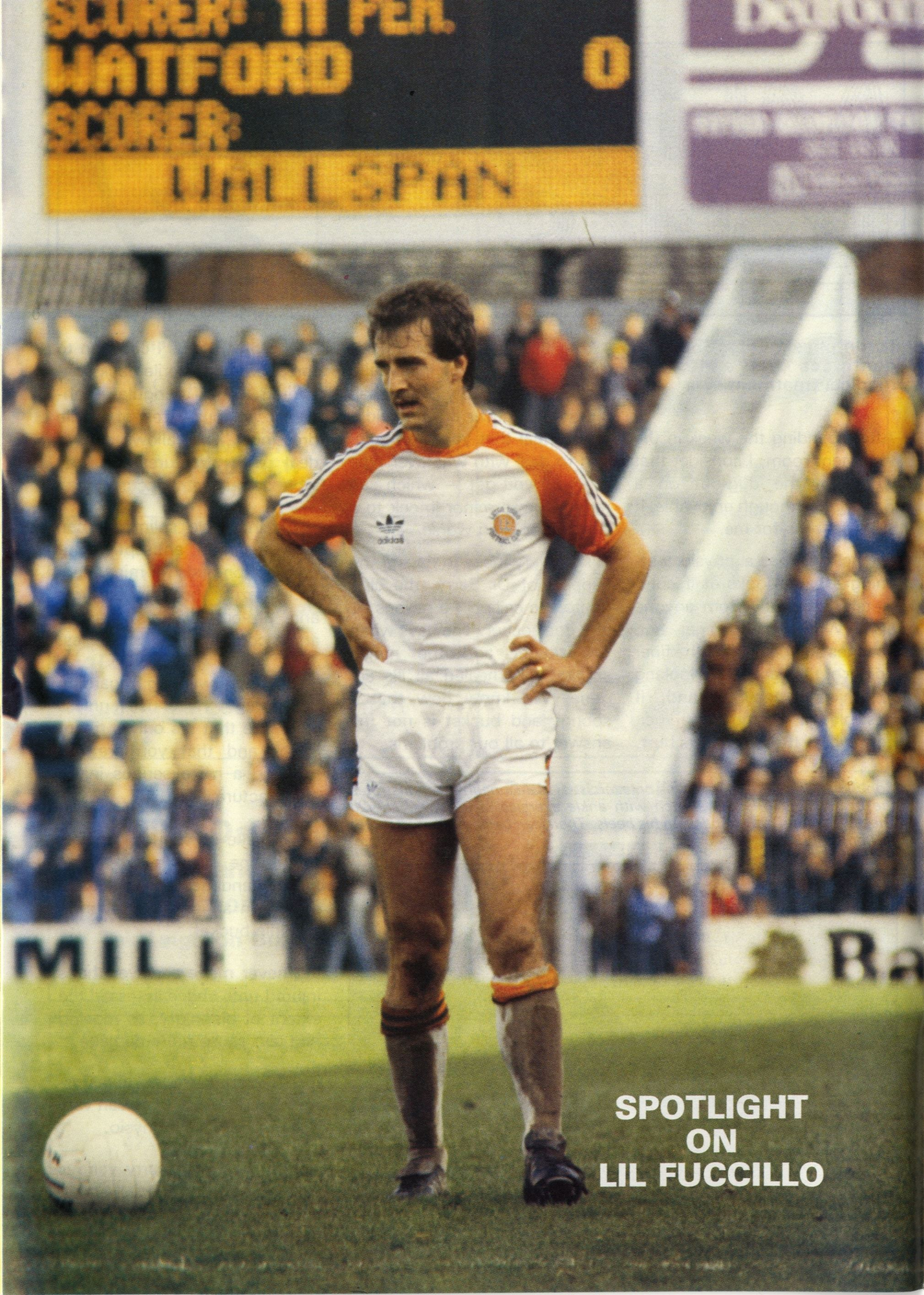
I never move a player that's injured until I have assessed the extent of his injury, as moving him can cause more damage.

These are the basic items used in my kit, but items can vary according to each physio.

You must also carry various odds and ends like laces, studs, pliers, spare pair of shorts and tie-ups.

Continuing the series of pictures on exercises, Mal Donaghy demonstrates the bilateral quadriceps stretch with ankle exercise. The player should kneel on the turf and sit back on his heels. Then lean back, hold, and return to upright position.





SCORER: 11 PER.
WATFORD
SCORER:
WALLSPAN

SPOTLIGHT
ON
LIL FUCCILLO

SPOTLIGHT

Lil Fuccillo is a player with remarkable recovery powers. And his dedication as a professional has ensured that he has made a complete recovery from twice breaking his leg.

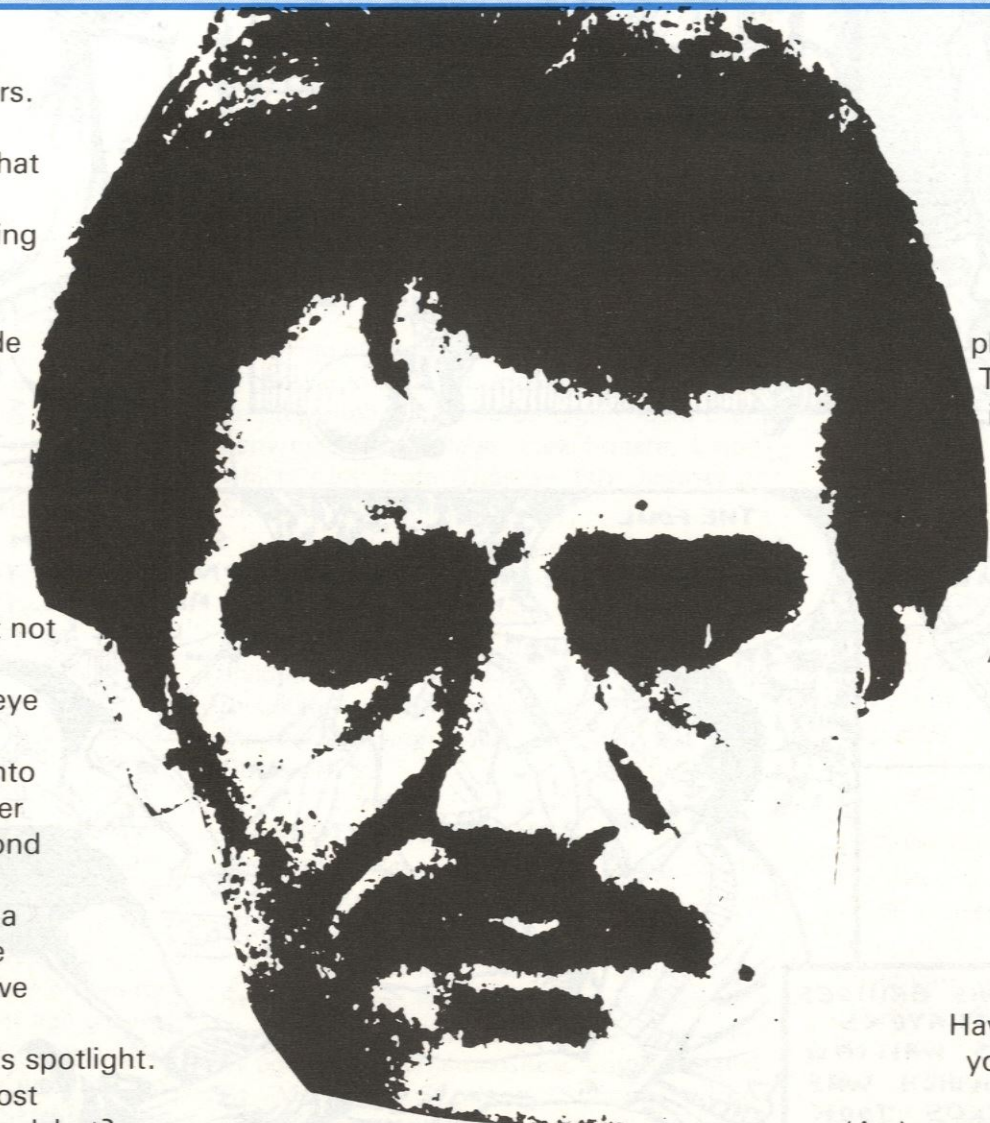
After breaking his leg in a match at Brighton, Lil made the long slog back to a full recovery only to break the same leg in a comeback game when he played for the club's juniors at Hitchin.

That would have killed the enthusiasm of most — but not Lil. He spent hundreds of hours under the watchful eye of physiotherapist John Sheridan and came back into the first team last December when he scored in his second comeback.

This season, Lil was given a first team spot in the home game against Cardiff and we asked him to answer the questions under this week's spotlight.

What do you remember most about your Football League debut?

'I remember the game at York and I was extremely nervous. But once the match



started, I soon got going and managed to lay on the first goal for Ron Fitcher. I also scored the winning goal in Luton's 3-2 victory.'

Who is the best player you have played with or against?

'Howard Kendall is the best player I have come up against. The other part of the question is easy because the answer is Alan Hudson when I teamed up with him in a testimonial game at Spurs.'

What were your thoughts when you broke your leg for the second time?

'I honestly thought my career was over. But it does prove that hard work can pay dividends.'

Who has had the biggest influence on your career?

'Former Luton coach Danny Bergara who nursed me through the club's youth system.'

Have you any thoughts on what you would like to do when you finish playing?

'As long as its connected with football I don't really mind. I think I may like to have a crack at coaching.'

Complete fitted bedrooms // from around £450

Wallspan Bedrooms

**FREE DESIGN
FREE FITTING**

see the full range at

LUTON Unit 174, Bute Street, Arndale Centre, Luton, Beds. Tel: Luton 23015	BEDFORD 59 Midland Road, Bedford. Tel: Bedford 211327	STEVENAGE 18 Market Place, Stevenage, Herts. Tel: Stevenage 724853	WATFORD 17/19 Queens Road, Watford, Herts. Tel: Watford 38388
--	--	---	--

THE LEATOWN CROWD GAVE A SPECIAL ROAR FOR YOUNG "BOBBIN" DINO, FRESH FROM HIS WORLD CUP QUALIFYING GAME FOR GUATADOR...



AS BOBBIN NURSED HIS BRUISES AND THE LEATOWN PLAYERS STOOD LIKE STATUES WAITING FOR THE FREE KICK WHICH WAS NEVER GIVEN - CARLOS TOOK UP A SHOOTING POSITION, AND...



HEAD FOR HEIGHTS!

EPISODE SEVEN

by Ray Aspden

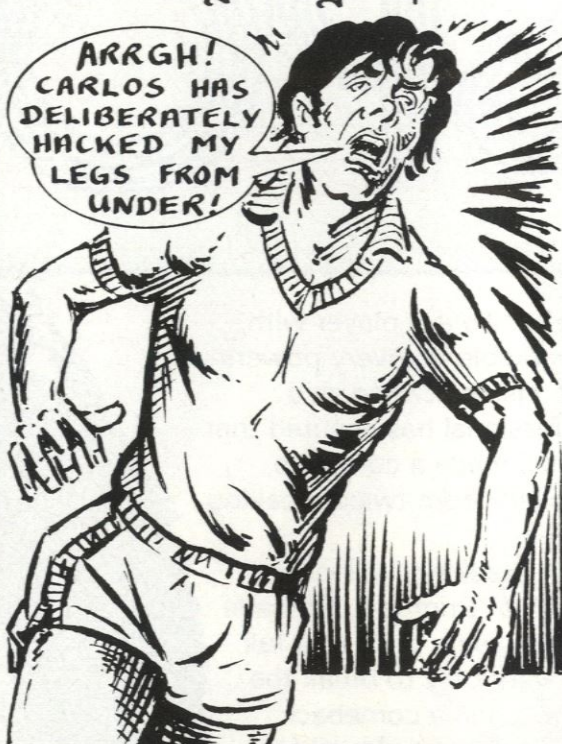
... AS THE GAME GOT UNDER WAY, BOBBIN WAS CLOSE MARKED BY CARLOS

SO YOU THINK YOU'RE BETTER THAN ME? I'LL PROVE YOU WRONG!



EVERY TIME I GET THE BALL I'VE NO SPACE TO USE IT!

ARRGH! CARLOS HAS DELIBERATELY HACKED MY LEGS FROM UNDER!

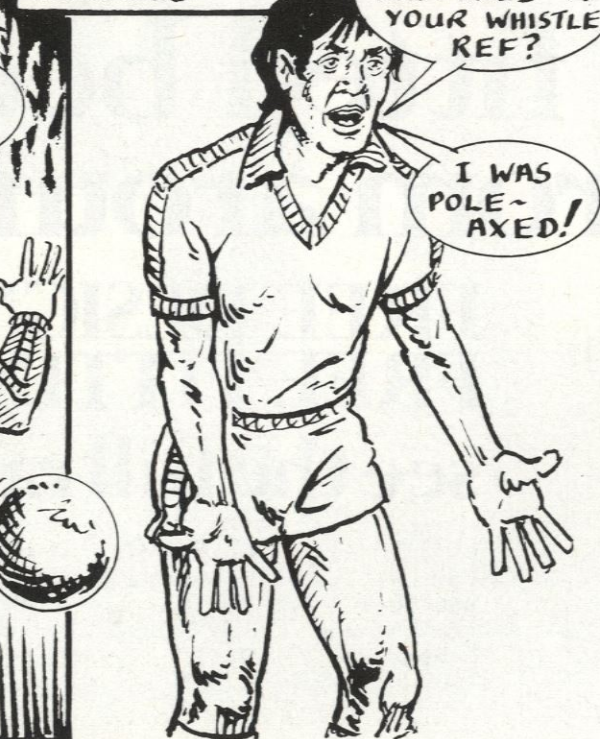


THE FOUL WAS ON THE BLIND SIDE, THE REF HASN'T BLOWN!



SO LONG SUCKERS, I'M ON MY WAY TO AN OPEN GOAL!

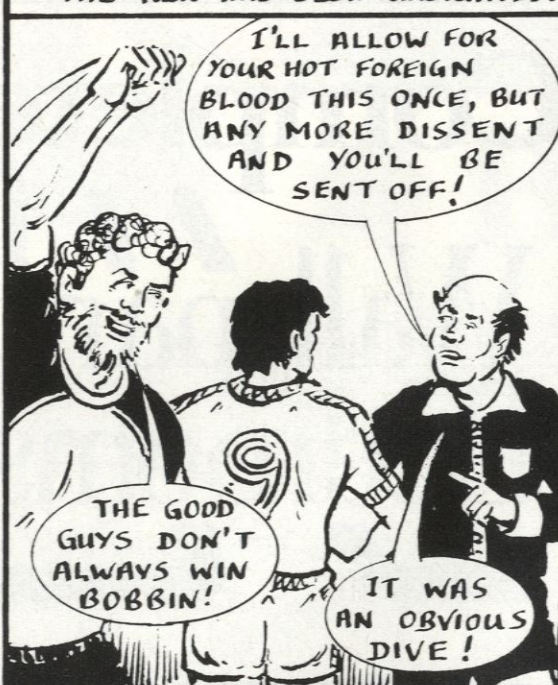
THE GOAL WAS ALLOWED...



WHATEVER HAPPENED TO YOUR WHISTLE REF?

I WAS POLE-AXED!

"THE REF HAD BEEN UNSIGHTED."



NEXT EPISODE: BOBBIN TRIES TO SHAKE OFF HIS SHADOW!

JUNIOR HATTERS



Last week saw the end of the first part of the Junior Hatters Five-a-Side competition, and the current league positions for the two sections are as follows:

OVER 11

	P	W	D	L	F	A	Pts
Strikers	13	10	2	1	47	10	32
Junior Hatters	13	8	3	2	26	11	27
Beech Hill	13	7	2	4	34	26	23
Robins	13	6	1	6	24	18	19
Swans	13	5	3	5	29	13	18
Memorial FC	13	3	3	7	11	38	12
Eaton Valley	13	2	4	7	16	30	10
Hot Rods	13	1	2	10	8	38	5

UNDER 11

	P	W	D	L	F	A	Pts
Luton Irish	12	10	1	1	36	13	31
Junior Hatters	13	8	1	4	27	16	25
Red Hand Gang	13	5	3	5	19	23	18
Spitfires	13	4	5	4	27	19	17
Colours	13	0	2	11	9	45	2

The football played has been of a high standard and the young people taking part have enjoyed themselves, which was what it is all about. Now we can look forward to the Spring when the action starts once more.

Generous offers of trophies to be played for by the teams in the two different age groups have been made by interested parents and adults, and competitions will be organised to play for them when our 'Five-a-Side' resumes again next March. This will give the existing teams and, possibly some new ones a chance to enter for the Cup competitions.

In the meantime many thanks to John Smylie, our football organiser, and to all the very helpful and enthusiastic parents and teachers who have so generously supported our little venture. Thanks too, to Steve White for his support. Now our competition is finished, at least for the time being, I can give details of future Junior Hatters activities.

DATES

Two dates to put in your diaries for our Junior Hatters Club meetings are:

1. Tuesday 17th November. 6.30 p.m.
Hatters Club (Maple Road)
2. Thursday 10th December. 6.30 p.m.
Hatters Club. Junior Hatters Christmas meeting.

Talking of Christmas, I have received details of the pantomime 'Jack and the Beanstalk' to be presented by the Luton Light Opera Company at Luton College, Park Square, Luton, which runs from Tuesday 5th January to Saturday 9th January.

I am making arrangements for a party of Junior Hatters to go on Friday 8th January, so I hope there will be enough interest shown to make this worthwhile. The cost will be £1 for children and £2 for adults - we could make this quite a night to remember, have a chat to Mum or Dad and get in touch with me at the club's offices.

MASCOTS AND ESCORTS

Mascot: Jason Simpkins of Oving Close, Luton, who is 11 and attends Someries Junior School, Luton.

Escorts: Ashley Jackson aged 9 of Stephens Way, Redbourn, attends Redbourn Junior School, Redbourn, Herts; Fiona Kenny aged 11 of Alfriston Close, Luton. Attends St Mary of Scotland School, Luton; Christopher Underwood of Brendon Avenue, Luton, aged 10, attends Wenlock C of E School, Luton; Simon Wells of Langford Road, Biggleswade, aged 8, attends Langford Junior School, Biggleswade, Beds.

Congratulations to Junior Hatter Robert Douglas of Orchard Way, Luton, who was the winner of our 'Mystery Player' competition. He correctly identified Jake Findlay. Robert now has the chance to see his favourites, Luton Town, in action away from home and the travel cost will be borne by Luton Excelsior Travel Club.

... AND THE ESCORTS



ASHLEY JACKSON



FIONA KENNY

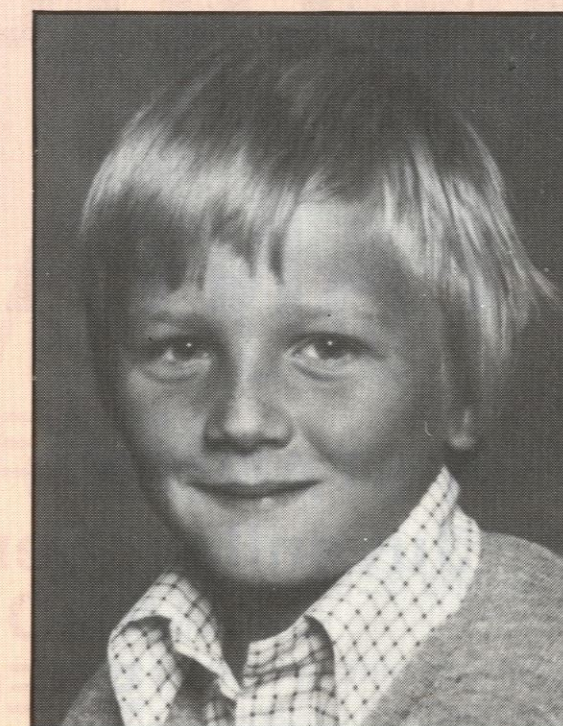


CHRISTOPHER UNDERWOOD



SIMON WELLS

THE MASCOT ...



JASON SIMPKINS

Many thanks to Tom Hunt and his colleagues from Excelsior Travel for their very generous offer and for their support for the Junior Hatters. There were three runners-up who received tickets for free admission to the Odeon Cinema, Luton, to see 'Escape to Victory', the football film. They were: Ian Saunders of Milton Road, Harpenden; Stephen Gray of Kingsdown Avenue, Luton; Kevin Frost of Turnpike Drive, Luton.

Please don't forget to tell parents and other interested grown-ups about our Buffet Dance at the Leicester Arms, Dunstable Road, Luton. It's next Saturday night, 7th November, and starts at 8 p.m. Tickets are available today from Pam Gray in the Souvenir Bar, Junior Hatters Club Room, or from Colin Ball at the Club Offices during the week - price is £2.50 per ticket, and proceeds are for Junior Hatters Club Funds.

● Apologies to Steven Barratt who was one of our escorts at the Grimsby game. Unfortunately, the incorrect information was given about Steven, who is in fact 12, and who lives at Potten End, Berkhamsted. He attends Bridgewater School, Berkhamsted. Sorry, Steven, but you must have enjoyed the result.

Colin Ball
Youth Development Officer



LUTON TOWN FC

FANTASTIC SAVINGS

PURCHASE
A STANDING SEASON TICKET — PRICE £30
Juveniles, Senior Citizens and Students £20
AND SAVE MONEY WITH
SPECIAL OFFERS FROM

Tricentrol
CARS (LUTON) LIMITED

*Up to 10% off the basic price of any new car
£100 off any used car plus a free season ticket for 1982-83*

Wallspan
Bedrooms

10% OFF ALL
CASH
PURCHASES

£250 DISCOUNT
OFF ANY

Barratt
HOME

Purchased in
BEDFORDSHIRE, BUCKINGHAMSHIRE,
CAMBRIDGESHIRE, NORTHAMPTONSHIRE
Prior 31.12.81

Plus special discounts from
BERNARDS WORLD OF SPORT
and

MR BYRITE FASHION STORES, ARNDALE CENTRE

TRAVELTIME

SUPPORT FOR TRAVEL CLUB IS ON THE INCREASE

I am happy to report that interest in our Travel Club is growing with increasing numbers of supporters taking advantage of our coaches to away games. Don't forget this is our first aim — to get you, the supporters, to games, home and away, to watch the team in action.

Coaches will continue to run to all away games, but I would ask you to telephone me early in the week (Luton 411622 extension 27) to reserve your seat. Your response for Wrexham was so good I was able to arrange an additional coach to avoid disappointing anyone.

I have already received some bookings for Blackburn Rovers on 14th November. Coaches will leave the Maple Road car park at 9 a.m. and the fare is £4.25 (adult) and £3 for juveniles up to

and including 15 years of age.

News of our trip to Newcastle will appear in the next matchday magazine.

We are providing an additional service now at home games. Half an hour before kick-off, and half an hour after the end of the match, couriers will be in the main ticket office, Kenilworth Road, to take coach bookings.

You may also pay in advance if you wish. I am very grateful to the couriers for voluntarily giving their time to help our Travel Club in this way.

We have an addition to our 'in' service for the Milton Keynes run. The coach will now begin its run from Stony Stratford Bus Station at 13.30 calling at Wolverton Railway Station at 13.35. M.K. Midsummer

Boulevard at 13.45. Bletchley Bus Station at 13.55 and on to Kenilworth Road.

We have been able to arrange this in response to requests from supporters in the Stony Stratford and Wolverton areas, so we look for big increases in support. This additional service began today, and will operate for the future.

I welcome suggestions for improving and expanding our 'in' service, and especially require couriers for the Hitchin run. Write or telephone if you can help.

Keep those membership cards rolling in — it gives us a closer link with you all.

I'll be introducing more of our couriers to you shortly.

Catherine Ball
Travel Organiser

Building houses to make homes in
at

Warden Hill, Luton
Parkside, Houghton Regis
Two Mile Ash, Milton Keynes
Church Green, Bletchley
Kimbolton Gardens, Bedford.



Telephone: Luton (0582) 422771

FLASHBACK

A look at the Luton Town scene a decade ago.
By BRIAN SWAIN
Sports Editor, Luton News

Striker Bob Hatton scored his first Kenilworth Road goal ten years ago this week — and the Luton Town customers booed heartily. We weren't to know that the young sharpshooter, with a shock of black and almost curly hair, was to become a local hero years later.

The goal in question was scored for Carlisle who seemed to have a bit of a hoodoo on Luton Town in those days. They had been fourth in the Second Division the previous season, and had looked promotion prospects again in the winter of 1971 except for their inability to pick up points regularly in away games.

On six trips away from Brunton Park they had lost five times, and Luton Town, with

TREVOR FRANCIS



promotion ambitions of their own, were expected to dish out the sixth defeat.

It was the fifth meeting between Luton and Carlisle, and we were due for a win, because we had yet to accomplish one against them.

Two consecutive defeats, however, affected the gate, and the attendance at Kenilworth Road dropped to 11,963. The stay-at-homes must have known something because the game turned out to be one of the worst in memory.

Even manager Alec Stock admitted that it was the worst he had seen in the three years since he had taken over.

Carlisle's longest-serving player was goalkeeper Allan Ross, who had joined them from Luton Town eight years previously. He hardly had a thing to do as Carlisle ran the match from first kick to last, with Chris Balderstone controlling midfield and Hatton and Bobby Owen causing all sorts of problems for Chris Nicholl and John Moore.

In the 22nd minute Keith Barber dropped a corner and Hatton accepted the gift to put Carlisle ahead, and nothing went right for the rest of the game.

Don Givens, normally used in midfield, had been put into a central attacking role to try to boost a Town forward line that had scored only once in five games. It didn't work, and at half-time Gordon Hindson was pushed up from midfield to form a twin spearhead with Vic Halom. That didn't work either.

Ross had to make a couple of saves, from Halom and Peter Anderson, and had a spot of luck when a long-range drive by Mike Keen hit the post, but the Town's game was riddled with mistakes.

The slow handclap broke out, cries of 'What a load of rubbish' rang round from all sides and 12 minutes from time Carlisle wrapped it up when Balderstone scored from 20 yards.

Alec Stock, one of football's gentlemen, spent an hour behind locked dressing room doors with his players, then emerged to announce that he had told them a few home truths, and that he sympathised with the home crowd.

He promised action to try to get the Town's promotion ambitions on the move again.

Today's visitors, Crystal Palace, were also taking action to strengthen their team ten years ago this week. A couple of weeks earlier they had bid £80,000 for Hatton, but Carlisle turned them down.

Manager Bert Head, working to keep Palace in the First Division, went to Glasgow Celtic after that rebuff, and paid £50,000 for two players — John Hughes and Willie Wallace.

And that man Hatton was in the news again shortly afterwards — he moved to Birmingham City for £80,000 where he teamed up with Bob Latchford and Trevor Francis. Birmingham were his fifth club and it was to be another seven years before he joined his seventh... Luton Town.

LUTON

Wallspan
Bedrooms
Showrooms throughout
London and Home Counties
SEE US IN
LUTON ARNDAL CENTRE ☎ 23015

SCORE
WITH
HATTERS
BINGO.

Wallspan
Bedrooms
FITTED BEDROOM FURNITURE
SEE US IN
Yellow Pages

Despondency and gloom seem to be part of so many peoples lives these days, that is why we are working hard to make your day at the football club one you will look forward to and treasure.

Where else could you see a cricket match, play bingo, take your pick and see six goals scored, all in one afternoon? Yes, it all sounds fishy, but that's what happened at out last home match against Grimsby.

We want you to come and enjoy yourselves, forget your problems and join in the fun with us, and to help you do that we are once again offering an opportunity for you to win a £400 holiday with Silvair Holidays, King Street, Luton, which is today's star prize for a line across on Top House Bingo.

So, check your bingo card, listen to George and watch the Wallspan Scoreboard extra carefully for the numbers today. You may be the lucky winner who will be able to fly away for a dream holiday.

In addition to the pre-match Wallspan Games, we have invited Ampthill band along to entertain you. Many of you will recognise their euphonium player, Les Miller, who is one of our most ardent fans, having recently recorded his 100th consecutive away game in support of us.



Young Peter Mallord, of Wood Farm Road, Hemel Hempstead, pictured after his win in the Take Your Pick game before the Grimsby match.

We thank you Les for your loyal support and look forward with pleasure to the entertainment you and your fellow band members are providing this afternoon.

CROSSWORD

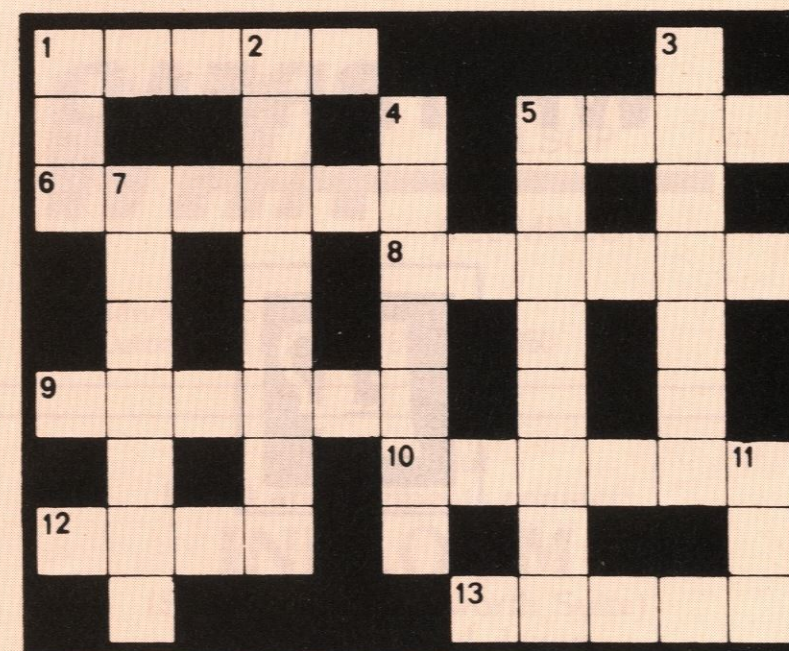
CLUES — Across

1 & 13ac. Striker who has found the net with regularity over the last few seasons — especially for Sheffield Wednesday and Newport County (5,5); 5. See 4dn; 6. Experienced keeper who moved to 4dn after service at Burnley, Fulham and Hereford (6); 8. Forward-line (6); 9. Effective striker whose career took in Charlton, Southend, Bradford Park Avenue, Southport (twice), Torquay (twice), Stockport, Blackburn and Oldham (6); 10. Wales Under-23 midfielder of the 1950s-60s who served Birmingham and Middlesbrough (6); 12. Duncan's first name (4); 13. See 1ac.

CLUES — Down

1. Ward, old Derby and England half-back (3); 2. Keeper who joined Crewe from Shrewsbury in 1980 and was a League regular last season (8); 3. It's another ball game to some soccer men! (7); 4 & 5ac. South coast ground (7,4); 5. Contemporary of 9ac and another striker who began at Charlton... but then turned out for Newport, Swansea, Gillingham, Northampton, Millwall, Reading and Swindon (3,5); 7. One of the original 12 League clubs (7); 11. Aston Villa's previous First Division title came in nineteen hundred and ____ (3).

• Check your answers with the solutions on Statistics page.



AROUND THE TOWN

JOIN OUR FRIENDLY FAMILY



We think we have the most friendly facilities in the entire Football League at Kenilworth Road. Through our exclusive Junior Hatters Club, we have made a big breakthrough in helping families to watch soccer in complete safety in our special Evening Post-Echo enclosure at the Oak Road end of the ground.

And there is always a bonus for young members at every home game when we select a mascot and four escorts.

Pictured here are the four escorts on duty at the Grimsby game. From left to right: Stuart Caspall, Steven Barrett, David Beard and Louise Sams.

BOX OFFICE . . . BOX OFFICE . . . BOX OFFICE . . . BOX OFFICE . . .

First, thanks to all those good and kind supporters who responded so well to our plea to purchase their seat tickets for today's game early and consequently made life very much easier in the ticket office.

With another home League game next Saturday, against Derby County, it helps with getting the supporters into the ground more quickly if we can sell the match day tickets in advance.

The ticket office will be open after today's game for the purchase of tickets for future matches and also we will receive paid orders for the Chelsea game on December 12th and the Boxing day game here against Cambridge United (11.30).

For those supporters already enquiring about FA Cup-ties the draw for the third round proper takes place on Monday December 14th, and the ties are played on Saturday January 2nd.

In welcoming our friends from Crystal Palace today, we sincerely hope you enjoy the game. Yes, we do know our main stand has a few obstructions, but we do also sincerely hope that one day we may have one of the nice new stands many clubs have managed to persuade their bank manager to build for them, providing, of course, the club can afford the interest charges.

Therefore, please do accept our apologies in advance if your view is slightly obstructed.

HERE AND THERE

The matchday magazine editor has received a letter from a Grimsby fan who made the journey to watch his team two weeks ago. He writes: Having recovered from the traumatic experience of seeing my team beaten by six goals, I read your magazine and note you say Grimsby have met every Football League team EXCEPT Wigan Athletic. In fact, the Mariners were the first Football League side to visit Wigan when they were elected. Grimsby played there on August 23rd 1978. The return was on March 24th. We are happy to put the record straight for Mr Triggs who lives in Reporto Avenue, Grimsby.

- The Spina Bifida and Hydrocephalus Association for Herts and Beds have written to manager David Pleat thanking him for donating an item for inclusion in their charity auction. The evening raised £5,000 for the associations' funds.

- Finally, the manager received a letter from Mrs M. McAlinney, who lives in Sundon Park Road, Luton. She wrote to say she and her son travelled by private coach to watch the game at Orient. Her son, who had bought a new pair of football boots, left them on the coach when they arrived in London.

When Mrs McAlinney and her son returned, guess what? Yes, the boots had disappeared. Our manager offered to attempt to find the young lad another pair of boots, but Mrs McAlinney wrote back to say: 'I would like to thank you for such a nice reply to my letter.'

'I am prepared to buy him the boots myself but, at the time, I was so angry to think a Luton supporter could have done this when we were all on the coach together.'

It makes you wonder, doesn't it?

A STITCH IN TIME . . .



Young Luton supporter Peter Fisher was unfortunately involved in a big argument with a brick wall before our last home game against Grimsby.

But help was at hand in the shape of Stan Everitt, the trainer who looks after our youth team. Stan took young Peter into the dressing room to patch him up.

Some lads will go to any lengths to get into our dressing rooms . . .

VIP's ARE OUR VISITORS

This afternoon, we are very pleased to welcome to Kenilworth Road several VIP visitors. Guest of honour is our local MP for Luton West, John Carlisle, who is here to take part in a presentation ceremony involving a cheque for £185,106 from the Football Grounds Improvement Trust (FGIT).

The Trust is represented by Stanley Taylor, who has been one of its members since its beginning in 1975.

The presentation will take place on the pitch shortly before the start of today's game. Mr Taylor will hand the cheque to Mr Carlisle, who will then present it to our chairman, Mr Denis Mortimer.

It covers the grant we have received from the FGIT towards the £380,000 which we have spent on safety works at Kenilworth Road on the instructions of the Bedfordshire County Council.

All the money from the Trust comes from a voluntary donation by Britain's three pools companies, Littlewoods, Vernons and Zetters, out of their Spotting-the-Ball competition.

Over £4½ million a year goes into British football in this way, and the pools also contribute £3½ million to the game for the use of the fixture lists on the coupons — making a total of £8 million a year.

All First and Second Division clubs now have to obtain a safety certificate from their local council before they can open their gates to the public.

Here at Luton Town we've had a vast amount to do. The work has involved

strengthening, testing and installing new crash barriers, extensive fireproofing, new fencing, exit gates and staircases — all expensive items and we are grateful to the Football Grounds Improvement Trust and the pools companies for their generous help.

Also in attendance this afternoon is the Rt. Hon. Lord Hill of Luton, a former chairman of the BBC and a keen Hatters supporter.

Luton are one of 25 clubs in the Football League who have received in excess of £170,000 from the FGIT — indeed all the 92 clubs in the League, with the exception of Bristol Rovers have had something. Luton's opponents today, Crystal Palace, have had £210,000, as have neighbours Watford.

FOLLOW THE ACTION

A week today, our first team are at home to Derby County in another attractive Second Division game.

That is followed by two successive away League matches at Blackburn Rovers and Newcastle United before the next home Second Division game against Bolton Wanderers on Tuesday November 24th.

The draw for the third round of the Football League Cup was due to be made this week and, because of our printer's deadlines, these notes were written before our League Cup-tie at Wrexham last Tuesday.

If we reach the third round, details of our opponents and ticket arrangements will appear in the local press.

Our reserves are at Highbury a week today they meet Arsenal in a Football Combination game.

WHITBREAD



TROPHY BITTER



Your Local Tour Operator
Book now for your
Winter and Christmas
holidays.
Contact:
Silvair Holidays Ltd
Silvair House
13-15 King Street, Luton
Tel: 412131

For ALL your Window
and Door requirements

WHA ALLSOP

ALUMINIUM

153 Newtown Street, Luton
Tel: Luton 20011/23472. Eves 424650

For all your
Floral arrangements contact:
INBLOOM
(Suppliers to Kenilworth Suite)
45 Latimer Road, Luton

Where's the biggest choice and best advice on fitted bedroom furniture?

INTEREST FREE CREDIT

Deciding which bedroom furniture to choose can be tiring and confusing. But if you come to Wallspan Bedrooms you can see the biggest range of styles and finishes around at prices you'll travel a long way to beat.

When you choose a Wallspan Fitted Bedroom, the price pays for a lot more than just the furniture.

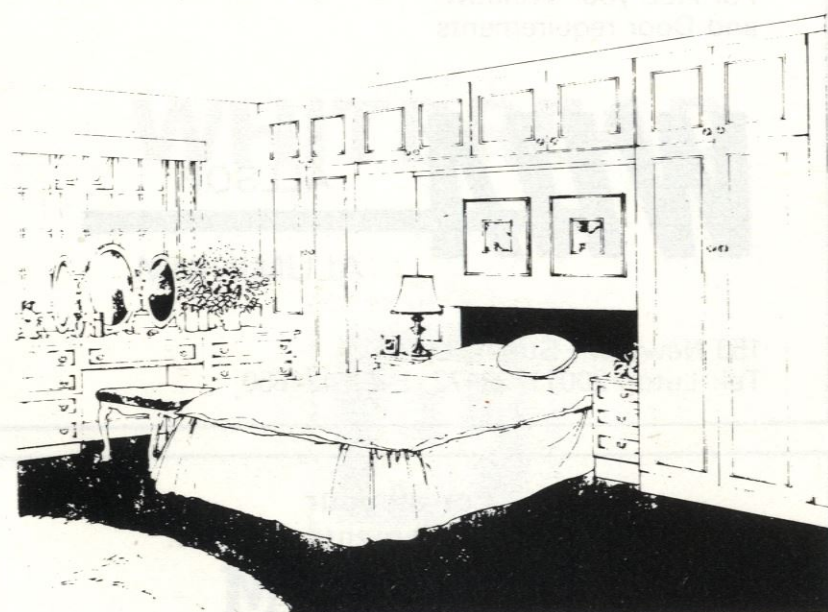
FREE DESIGN, FITTING & DELIVERY

It pays for one of our designers to plan your fitted bedroom to your taste, so that it looks and works beautifully. Nooks, crannies, sloping floors and all.

It pays for our delivery people to bring your tailor-made Wallspan Furniture to your home on a guaranteed delivery date.

MADE TO FIT YOUR BEDROOM

It pays for our craftsmen to build your Wallspan into your bedroom so that it really fits. Wall to wall. Floor to ceiling. With no ugly gaps or spaces.



Showrooms throughout London and the Home Counties.

FINEST MATERIALS

We use the finest melamine for all our surfaces and all exterior surfaces are coated with a protective lacquer to guard against knocks and scuffs.

Expensive hinges and clasps mean our doors shut smoothly, but securely, with a satisfying click.

UNIQUE NON-STICK DRAWERS

They're made to a design no one else has. You can pull them out easily with your little finger and they'll run smoothly no matter how much you put in them.

UNBEATABLE VALUE

All this you get from prices that start from around £450 complete.

If you'd like to know more about Wallspan come round to your local showroom and see for yourself. You'll find our staff will help you, not hassle you. And there's no obligation on your part whatever.

Oh, and when you come - remember to try the drawers.

Wallspan Bedrooms

LUTON

Unit 174, Bute Street,
Arndale Centre, LUTON,
Beds Tel 23015

WATFORD

Queens Road
WATFORD Herts
Tel 38388

STEVENAGE

18 Market Place
STEVENAGE Herts
Tel 724853

BEDFORD

59 Midland Road
Tel 211327

MEMBERS OF THE

KENILWORTH SUITE

BARRATT DEVELOPMENTS
(LUTON) LTD
PO BOX 5, BARRATT HOUSE
LUTON L42 7XJ
TEL: LUTON 422771

A. G. BERRY ESQ.
BRENGREEN HOLDINGS LTD
61 CHEAPSIDE, LONDON EC2V 6AX
TEL: 01-248 6026

BLUE ARROW STAFF BUREAU
3 HOLYWELL HILL
ST. ALBANS, HERTS.
TEL: ST. ALBANS 61373

B. COLE ESQ.
CLEANDUSTRIAL SERVICES LTD
PALMERS GREEN, LONDON N13
TEL: 01-882 4626

FILMERGRAPHIC ASSOCIATES
PHOTOTYPESETTING AND PRINTING
BAINSON HOUSE, ALTON ROAD
LUTON
TEL: LUTON 36407

FINE STAMPS LTD
BILTON WAY, LUTON
TEL: LUTON 36761

N. S. FOOKES ESQ.
N. S. FOOKES, ENGINEERING
SERVICES LTD
45 LATIMER ROAD, LUTON
TEL: LUTON 26139

MR E. FOUNTAIN
VAUXHALL MOTORS
LUTON

S. GOLBY, FREDK RAY LTD
STANBRIDGE ROAD
LEIGHTON BUZZARD
TEL: 372241

BRIAN E. HANDSCOMBE
(LIFE AND PENSIONS BROKER)
48 ALMA STREET, LUTON LU1 2PL
TEL: LUTON 425921/4

G. B. HOLLAND ESQ.
G. B. HOLLAND & CO. LTD
MOTHERWELL WAY, LONDON ROAD
WEST THURROCK, ESSEX

MR I. E. HOLMES
IVOR HOMES LTD
82-88 MARSH ROAD, LUTON
TEL: LUTON 56622

C. J. HUDSON ESQ.
E. W. HOLDINGS LTD
6 UNION ST., LUTON
TEL: LUTON 30511

RICHARD C. LARKINSON
(BALDOCK) LTD
TWENTY PENCE ROAD
COTTENHAM, CAMBS.

P. LAYCOCK, LUTON SPORTS PRESS
HAZELBURY CRESCENT, LUTON
TEL: LUTON 28757

MARK JAMES (SALVAGE) LTD
16 WEST STREET, DUNSTABLE
TEL: DUNSTABLE 605944

MARSHALLS OF LUTON
(BUILDERS) LTD
SARUM ROAD, LUTON
TEL: LUTON 597666/9

DR & MRS G. L. PLESTER
9 BRIARS CLOSE, NUNEATON
WARWICKSHIRE

A. HUNTER ESQ.
RAVENMERE LTD. ALLRIC HOUSE
21 FARLEY HILL, LUTON
TEL: LUTON 32640

RICHMOND ELECTRONICS
(MARKYATE) LTD
HICKS ROAD, MARKYATE, HERTS.
TEL: LUTON 840761

ROBINSON METAL (LUTON) LTD
CALEB CLOSE
464 DUNSTABLE ROAD, LUTON
TEL: LUTON 53866

R. S. SAFRANEK ESQ.
NEAHURST LTD, LONDON RD.
LOWER STONDON, HITCHIN
TEL: HITCHIN 94-813545

TRICENTROL CARS (LUTON) LTD
326-340 DUNSTABLE ROAD, LUTON
TEL: LUTON 31133

T. & H. TYRE SERVICES LTD
MANOR ROAD, LUTON
TEL: LUTON 27665

R. W. UNWIN ESQ.
R. W. UNWIN & CO. LTD
PROSPECT PLACE, WELWYN HERTS.
TEL: WELWYN 6441

WALLSPAN BEDROOMS
INDUSTRIAL ESTATE
MAULDEN ROAD, FLITWICK, BEDS.
TEL: FLITWICK 3621

The wheels for British industry DAF Trucks

HENLYS



first for

TALBOT-PEUGEOT

Luton Way, Dunstable, Beds.
Telephone: 64171.

LUTON TOWN PLAYERS DRINK



MILK

For your nearest depot
ring Luton 23580



GOLDEN GOALS GALORE AT KENILWORTH ROAD

Luton Town received a Pepsi Golden Goals £1,000 monthly award at Kenilworth Road a week last Saturday — and celebrated in style by hitting Grimsby for six!

Luton won the award by topping the Pepsi Golden Goals table for Division Two for September. And they are right on target for grabbing the October award as a result of their goal-scoring feats so far this month. To cap it all, they comfortably lead the chase for the Division Two full season Pepsi award of £5,000.

Pepsi Golden Goals is the new goal-scoring incentive scheme, sponsored by Pepsi-Cola and approved by the Football League. Pepsi are awarding £1,000 each month — and £5,000 for the season overall — to the top club in each Division, based on the following system:

- *One point for every home goal.
- *Two points for every away goal.
- *Three bonus points for a score of three goals or more in a match, home or away.

Top goal-scorers in each Division at the end of the season will also receive generous awards under the Pepsi Golden Goals scheme.



Luton Town manager David Pleat receives the Pepsi Golden Goals £1,000 award for September from Schweppes' national accounts manager, Ken Coates (representing Pepsi-Cola).

RICHMOND ELECTRONICS (MARKYATE) LTD

HICKS ROAD
MARKYATE
HERTS

Tel: Luton 840761
Telex: 826383 Henri G

RICHMOND PRECISION ENGINEERING LUTON AIRPORT LUTON BEDS

Tel: Luton 416969
Telex: 825413

ELECTRONIC, ELECTRICAL &
MECHANICAL ENGINEERS

Approved to Defence Standards 05-21

JOHN'S JOURNAL

I have received many letters recently requiring answers to questions concerning the club's history from its early days to more recent times.

I am grateful to Mr Brian Ellis of Bluebell Wood, Luton who writes — 'In the days of the million pound player, at the other end of the scale Luton Town once received perhaps the lowest share of the gate which has been given by a home club to a visiting side.' That distinction goes to Thames FC who gave the club a postal order for one shilling and eight pence on 6th December 1930.

The only thing they kept for themselves was the two points, as they beat us 1-0. Incidentally, the referee that day was none other than the now Sir Stanley Rous. The report given by the club on his handling of

the game was satisfactory. Things don't change that much.

The postal order was put into a frame and hung in the club room for many years. At the time of writing I can't find anyone who knows where it is now but it must be about somewhere. When it does come to light, I will get a photograph taken of it as I am sure there are many older supporters who would like to see it.

It was with deep regret that I learned of the death of former chief scout at Oxford United, Fred Ford, on 16th October. He was always ready to have a good laugh with everybody but he also had his serious side and was well respected throughout the football world and he will be sorely missed. To his club and family we

send our deepest sympathy.

Former player Alan Birchenall breezed into my office last week for a five minute chat and in those five minutes he changed the atmosphere in the whole place. One of the game's characters, he is still enjoying his football, as player-manager at Trowbridge Town.

It anyone can get players in the right frame of mind for a game, then it has to be Alan. At least the players go out onto the field having a good laugh, but he didn't say anything about what he does if they lose. One can only think.

John Wilkinson
Secretary



B. DOHERTY (LUTON) LTD 34 MOUNT PLEASANT ROAD, LUTON, BEDS. Telephone: Luton (0582) 54633 or 54799



BULK EXCAVATION &
EARTH MOVING

SUPPLIERS OF
MATERIALS TO THE
BUILDING INDUSTRY

CIVIL ENGINEER
CONTRACTORS

HAULIERS

PLANT & SKIP HIRE

CENTURY CLUB

We welcome once more to Kenilworth Road our visitors from Crystal Palace, and especially the members of the Vice Presidents Club who are joining us in the Century Club. We look forward to an entertaining afternoon, while wishing our team the best of luck.

We are also looking forward to a pleasant evening after the game at our Hallow'een Party.

An interesting game took place at Kenilworth Road

recently — the ESFA Under-15 Pre-International Trials for the South, with boys from Beds, Bucks and Herts v Cambs, Leics and Northants.

The match sponsors were again from the Century Club — Ludlow Group Services (Industrial Cleaning Supplies Div.) and the Century Club hosted the after match function. The help given by Frank and Derek Ludlow was much appreciated by the ESFA officials, and we were privileged to be the recipients of some very generous praise from the new Chairman of the English Schools' FA, Mr Pat Smith, who is no stranger to us. He described our club as 'very friendly and hospitable'.

Several members have expressed an interest in away travel and it is proposed to run an executive coach to certain away games this season. Any interested members please give their names to Stuart Allsop or Catherine Ball today.

MATCH SPONSOR

Wallspan Bedrooms are today's match sponsors and, for those of you who are not aware of the involvement with Luton Town, of Terry Bailey, chairman of Wallspan Bedrooms, then you need look no further than our superb scoreboard.

Last season, with Terry Bailey we were able to install for you the finest scoreboard in Europe

enabling us to provide the finest entertainment and information centre available for our supporters and those of visiting sides who may also have the benefit of a Wallspan Fitted Bedroom showroom in their area.

With showrooms throughout London and the Home Counties, Wallspan provide the widest range and best advice on fitted bedroom furniture available.

Since the scoreboard was officially opened at last season's home match against West Ham, Wallspan have opened more showrooms offering their unique brand of quality, service and value for money, where the price pays for a lot more than just the furniture.

We welcome Terry Bailey and his guests to today's match with grateful thanks for his continued support.

pen., Butlin) Crystal Palace 1 (Possee). Crystal Palace 1 (Rogers) Luton Town 2 (Anderson, Butlin).

1977-78: Luton Town 1 (Fuccillo pen.) Crystal Palace 0. Crystal Palace 3 (Silkman 2, Sansom) Luton 3 (Price, Boersma, Fitcher, R.)

1978-79: Luton Town 0 Crystal Palace 1 (Nicholas). Crystal Palace 3 (Swindlehurst, Hilaire, Murphy) Luton Town 1 (Fuccillo pen.)

Teams for last game here, March 24th 1979. LUTON TOWN: Findlay, Stephens, Price, Donaghy, Turner C., Carr (West), Hill, Aizlewood, Taylor, Hatton, Stein.

CRYSTAL PALACE: Burrridge, Hinshelwood, Sansom, Kember, Cannon, Gilbert, Nicholas, Murphy, Swindlehurst, Walsh, Elwiss.

Attendance: 11,008.

IN RETROSPECT

LUTON TOWN v CRYSTAL PALACE

Division Three (South): 1920-21 2-2 (h), 1-2 (a); 1925-26 3-2 (h), 0-3 (a); 1926-27 1-0 (h), 1-1 (a); 1927-28 6-1 (h), 2-3 (a); 1928-29 5-3 (h), 0-3 (a); 1929-30 2-2 (h), 1-4 (a); 1930-31 1-2 (h), 1-5 (a); 1931-32 3-0 (h), 1-1 (a); 1932-33 1-1 (h), 0-3 (a); 1933-34 2-1 (h), 2-2 (a); 1934-35 2-2 (h), 1-2 (a); 1935-36 6-0 (h), 1-5 (a); 1936-37 5-2 (h), 4-0 (a).

Division Three: 1963-64 0-4 (h), 1-1 (a).

Division Two: 1973-74: Luton Town 2 (Jim Ryan

LUTON LEISURE

Cricket at Christmas? Impossible? No it's not, because with the National Cricket Association and Beds Cricket Association, we have arranged a special coaching course, for the complete beginner to the more experienced.

The Luton News Special Three Day Cricket Coaching Course, commences on Tuesday 29th December 1981 to Thursday 31st December 1981. The course is being held at the Luton Regional Sports Centre, St Thomas's Road, Stopsley, Luton.

Anyone aged between 9-16 years may enter. The times for the three days are 9-12 year olds, 9.30 a.m. to 12.45 p.m. each day and the 13-16 year olds, 1.45 p.m. to 5.00 p.m. each day.

All coaches will be qualified Cricket Association Coaches. There will also be members of the National Coaches Association and Bedfordshire Coaches Association. The course fee is an unbelievable £4 for all three days coaching, and there is only room for the first 120 boys who apply. So please apply for an application form now and be ready for the summer.

We have not forgotten about football and there are still a few places left for the Evening Post-Echo Christmas special indoor three day football coaching course.

The course commences on Mon-

day 21st December and finishes on Wednesday. The course is held at three venues: Luton Regional Sports Centre, Putteridge Recreation Centre and Lea Manor Recreation Centre.

Those who are aged 7 to 14 years may enter. The times are from 9.30 a.m. to 1.00 p.m. each day. All coaches are FA qualified, and are members of the Bedfordshire Football Coaches Association. Once again the cost is only £4 for all three days, and there are only places for the first 40 boys at each Centre.

The Chiltern Radio 5-a-side tournament closing date is November 9th, and is open to all teams scratch or established. The age groups are 9-12 years, 12-14 years, 14-16 years and adults. There are plenty of trophies for the winners and the entrance fees are:

Adults: (7 players per team). One team £10.50 (£1.50 per player); Two teams £9 per team; Three teams or more £8 per team. **14-16 years** (7 players per team). One team £8 (approx. £1.15 per player); Two teams £7.25 per team; Three teams or more £6.50 per team. **12-14 years** (7 players per team). One team £6 (approx. 86p per player); Two teams £5.25 per team; Three teams or more £4.75 per team. **10-12 years** (7 players per team). One team £4.50 (approx. 65p per player); Two teams

£3.75 per team; Three teams or more £3.25 per team.

The cost includes affiliation fees if necessary, referees fees and all other costs except kit.

All matches are being played at Lewsey Park All Weather Playing Area, Pastures Way, Luton, Beds. The maximum amount of entries allowed are 16 teams in each of the three junior age groups and four teams for adults.

If maximum amount of teams enter, each adult team will have a minimum of 18 matches and junior teams will play a minimum of 24 matches.

If that happens, the maximum cost will be: Adults, approx. 8 pence per player per match; 14-16 years approx. 5 pence per player per match; 12-14 years approx. 3½ pence per player per match and 10-12 years approx. 2½ pence per player per match.

If you reach the latter round, the cost per match will be even less. Enter a team now or you might regret it.

If you wish to have an application form for any of the above events, or want any further information, or have any ideas for activities, please ring Luton 56879 or write to: Mike Iacono, Marsh House Centre, Bramingham Road, Leagrave, Luton, Beds.

PALACE BACKTRACK

A look at our visitors' history through the years

● While in the Second Division in 1921-22 Crystal Palace won 6-0 at First Division Everton.

● Palace supplied the first international from Division Three when Bob McCracken played for Ireland against England in October 1920. They also supplied the first international from Division four when Vic Rouse played for Wales against Ireland in April 1959.

● Ronnie Rooke became the first player-manager to be sent off when he had his marching orders in a game against Millwall in October 1949.

● Palace travelled the longest distance for a 'home' game when meeting Exeter at Southampton in November 1920 while their own ground was closed.

● Palace were knocked out of the FA Cup by non-League clubs in three successive seasons, losing to Finchley in 1952-53, to Great Yarmouth in 1953-54 and to Bishop Auckland in 1954-55.

● Palace lost 7-2 to Mansfield in 1962-63, but in the same competition beat Horwich 8-2 in 1963-64.

● Palace beat Southampton in Football

League, Football League Cup and FA Cup in 1964-65.

● The Crystal Palace v Millwall game on March 31st 1961, attracted a record Fourth Division attendance of 37,774.

● Palace became only the fifth Third Division club ever to reach an FA Cup semi-final when they did so in 1975-76.

● When Palace beat Chelsea in March 1973 it was their first win over a London club in 32 attempts since winning promotion to Division One in 1969.

IN FOCUS



'LOOK WHAT I'VE JUST COME ACROSS'
'Look what I've found,' could have been what our groundsman Dick Wassell was saying after 'finding' the FA Cup at Kenilworth Road recently.

Dick is pictured (left) on the evening we played Tottenham, the FA Cup holders, in a match for Paul Price's testimonial.

Unfortunately for Dick, he had to hand the Cup back to Spurs officials before they left the ground.

● Above, we feature Wally Allsop, who sponsored the home match against Grimsby.

Local companies who sponsor our home matches not only help the football club. The exercise also helps them to entertain their clients to a top Second Division match.

Mr Allsop is pictured holding a coloured picture of our team with members of his family.

SAVE OUR SOCCER

Fear Fear of relegation, fear of failure, the fear of the sack, producing:

Sterile Football The emphasis of the game has changed from winning to survival. *Coaching*, although benefiting many aspects of the game, has enabled unexciting individuals to produce teams which close down space to *stop* other teams playing, enabling them to survive themselves.

With the middle of the pitch so choked, there is left precious little goalmouth incident to entertain the public so badly needed to produce the finance to allow the game to develop. *Offside* has become one of football's unacceptable tactics. It frustrates spectators, particularly when it is used on the half-way line. *Petulance* of players also frustrates spectators.

They do not want to see the ball kicked yards away by the player who pretends he hasn't heard the whistle, or the player who pretends to just miss the ball when wasting

In the matchday magazine for our game against Grimsby, we introduced the start of a series by our chief executive JOHN SMITH who is conducting an in-depth investigation into the game's current problems. We continue today with a look at some of them. The series will be continued in the magazine for our home game against Derby County a week today.

time. Doesn't the pass back from the kick-off epitomise today's coaching attitude, 'the fear of not losing'.

Amenities Many clubs have, of necessity, spent millions on improvements which in effect only contain crowd behaviour. They do not encourage the new spectator to stay. When he arrives at the ground, he is confronted by masses of caging and fencing, a potential hostile environment, with abusive and obscene chanting. He rarely can find adequate parking facilities and worries about safety.

If it were not for hooliganism, this same money could have been spent on positive improvements which, in itself, would produce badly needed new income. Unfortunately, the canker of hooliganism in our society remains with us. We dare not take down the barriers or take the lid off this boiling pot, for the result would be a disaster. We have to live with it, providing the social outlet for these pent-up feelings until the cycle changes once again for the better. Meanwhile, we watch Coventry City with great interest.

It should be pointed out that, to my knowledge, we are probably the only country in the world where the clubs have to build and maintain their own stadia. Usually it is pro-

vided by the Local Authority, where it takes pride of place in the community. Like Real Madrid, it is the hub and focal point of the town or city it represents. However, can you ask for local money when massive amounts are paid for players?

Transfer Fees Today's huge sums do create an adverse public image. It is difficult to easily explain why you cannot spend £100,000 on decent amenities yet spend £250,000 on a player. It is difficult to justify paying a million pounds for a player.

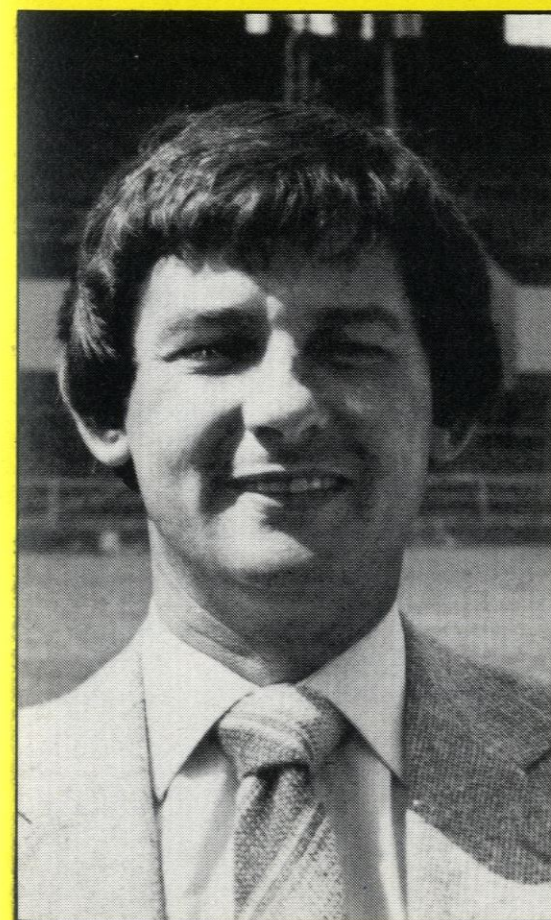
However, transfer fees are regulated by supply and demand. Good forwards are rare now, and rarities are valuable. The rarer the object, the higher the price.

Spectators also like to see fresh faces; they do not, however, like to see the transfer of their own teams' star player. How does the transfer work? Some clubs actually make large trading profits. That is the profit before the payment of transfer fees. These profits, unless they are spent, are subject to Corporation Tax.

If this tax is paid that money is lost to football. Rather than pay this tax, the profit is converted into players (assets) and the money stays in the game. Team 'A' expends a million by buying from team 'B'. They have spent their profit, sometimes converting the profit into a loss. Team 'B' pockets some of the money to cover its own losses, but buys a cheaper player from team 'C' and so on as the original money percolates through the teams in the League.

Only when the player is transferred abroad is the money lost to football. This system has operated in football almost since the League's inception. However, like inflation, like the price of everything, the amounts have got bigger and bigger, and, of course, the media and its change of attitude in reporting has brought this very close to the public.

JOHN SMITH





ACTION

LUTON TOWN 6 GRIMSBY TOWN 0

If it's goals you want — don't miss a game at Kenilworth Road. Our last home match produced six of the best with Steve White grabbing four of them.



Top left: It's there . . . Steve scores the third for his hat-trick and the Town's fifth goal. *Bottom left:* Going down . . . Brian Stein about to be given a penalty for the Town's second goal. *Above:* Going up . . . Brian climbs to supply the cross for White's fourth goal. *Below:* Going in . . . Grimsby keeper Batch is left helpless for another White Tornado.



VISITORS



IAN WALSH
Crystal Palace's Welsh International

LINE-UP

A complete reshuffle at managerial and boardroom level has left today's visitors, Crystal Palace, with the proverbial mountain to climb after finishing bottom of the First Division last season.

Palace managed to win only six of their 42 Football League games last term and finished 16 points adrift of Brighton who escaped relegation by two points.

Seven draws and 29 defeats left poor Palace languishing as very much the also rans in Division One and their fans will be looking for an almost immediate return to the top.

That may be difficult for manager Dario Gradi, the man who laid the foundations for Wimbledon's promotion drive before taking over at Selhurst Park.

Palace fans are thirsty for success after the club's players were left unsettled after four managerial changes. The ins and outs at Palace appear to have ended and Gradi faces a hectic time in the Second Division.

The London club must show they have the character to bounce back to the First Division and the signings of ex-Queens Park Rangers and Chelsea striker Tommy Langley and his mate Brian Bason seems to suggest that Gradi wants to use proven class in his bid to restore Palace's First Division status.



VINCE HILAIRE

Gradi also turned to Highbury when he managed to persuade Arsenal to sell midfield player David Price to provide the power which could help the club's promising youngsters.

But this season, Palace have not had an easy ride. Before last week's home game against Derby County, their form at Selhurst Park suggested they had the impetus to make a challenge for one of the promotion spots.

But, of their five away games, Palace have won only one, drawing one and losing three. That sort of inconsistency could bring about their downfall.

Central defender Steve Wicks arrived at Selhurst Park as part of the deal which took Clive Allan back to Queens Park Rangers in May and he was formerly with Chelsea and Derby County.

Billy Gilbert plays alongside him and was a regular in the back four for the last three seasons. Vince Hilaire was sent off in a recent match and his removal from the Palace side could have an unsettling effect on the rest of the team because he has the ability to cause havoc among opposing defences.

Keeper Paul Barron made 33 appearances last season after a move from Arsenal while striker Ian Walsh has been with Palace since 1973 and is a member of the Welsh squad.

Across: 1. B 13ac. Tommy Tynan; 5. See 4dn; 6. Mellor; 8. attack; 9. Fryatt; 10. Orritt; 12. John; 13. See 1ac. **Down:** 1. Tim; 2. Mulhearn; 3. cricket; 4. B 5ac. Fratton Park; 5. Pat Terry; 7. Everton; 11. ten.

TODAYS TEAM CHECK

LUTON TOWN		CRYSTAL PALACE
JAKE FINDLAY	1	PAUL BARRON
KIRK STEPHENS	2	BRIAN BASSON
CLIVE GOODYEAR	3	STEVE LOVELL
BRIAN HORTON	4	JERRY MURPHY
MIKE SAXBY	5	JIM CANNON (Capt)
MAL DONAGHY	6	BILLY GILBERT
RICKY HILL	7	DAVID PRICE
BRIAN STEIN	8	NEIL SMILLIE
STEVE WHITE	9	STEVE LEAHY
LIL FUCCILLO	10	TOMMY LANGLEY
DAVID MOSS	11	VINCE HILLAIRE
	12	

Referee: D. V. REEVES, Uxbridge

Linesmen: J. BYLES (Red Flag)

M. G. PULLEY (Yellow Flag)



TOKEN
7

Saturday
31st October 1981
CRYSTAL PALACE



IN CHARGE TODAY

REEVES, DARRYL V. (Uxbridge, Middlesex). Commenced refereeing in 1961 and progressed via local leagues through the Spartan and Isthmian Leagues to the Football League list. Refereed the 1973 Oxford v Cambridge University match at Wembley and has officiated in the Home Championships.

A married man with two children, he is a sales office manager in the textile trade whose home interests are interior decorating, gardening and listening to popular music. He also enjoys coarse fishing.