



# WREXHAM F.C.

Founded 1873

**Football League Cup  
(2nd Round—2nd Leg)**

**VERSUS**

**Luton Town**

**TUESDAY, 27th OCTOBER 1981**

**Kick-off — 7.30 p.m.**

**Season 1981-82**

OFFICIAL PROGRAMME

**25p**



WREXHAM F.C.  
THE RACECOURSE  
WREXHAM. LL11 2AN  
Telephone 262129



(European Cup-Winners'  
Cup, Quarter Finalists  
1975-76)

President:  
F. Wellum

Life Vice-President:  
T. H. Dodd

The Board:

Chairman:  
F. J. Tomlinson

Vice-Chairman  
G. Morris

Directors:

H. G. Phillips  
A. W. Gaede, M.C., T.D.  
W. P. Griffiths  
R. E. A. Clark, F.C.A.

G. Mytton  
Wyn Jones

Vice-Presidents  
Harold Evans

Dr. Wesley Hill Joe Scott  
General Secretary

C. N. Wilson, F.A.A.I.  
Manager

M. C. Sutton

Assistant Manager

M. Evans

Promotions Manager

Reg Slater

Club Doctor

Dr. Doug Jones

# MEL SUTTON

Luton Town leaders of the Second Division are back at the Racecourse tonight to complete our League Cup, second leg, and trailing by the 2-0 result we got at Kenilworth Road three weeks ago.

After Saturday's 2-0 win at the Racecourse by his side Luton, manager David Pleat said people expected his side to lose this tie being two goals behind, and perhaps his team might be able to relax. Well I can't imagine Luton Town relaxing one little bit. They'll be anxious to make amends from the tie they lost at home.

Make no mistake I rate Luton. That's not because they beat us on Saturday or that they are at present at the top of the table. They have always been a good footballing side and I tip them to finally make promotion this season.

I was very disappointed at our performance on Saturday. We lacked commitment in certain areas with Luton fully deserving their win. Now our lads have got something to prove tonight, both to me and you the fans. We have got to put things right and as I said earlier in the season it is important to the club that we retain interest in cup competitions as long as possible.

Our home form has of course been disappointing. I am continually being asked at Press conferences why do we slip up at the Racecourse? I'd rather not go into that too much. The players know that they have a job to do and the fact that Luton won on Saturday could, strange as it might sound, spur them on tonight. If we do get through to the next round it could have the psychological effect of giving us a much needed boost in our league programme.



NEXT HOME GAME...

WREXHAM

SATURDAY, NOVEMBER 7th

v

League Division Two

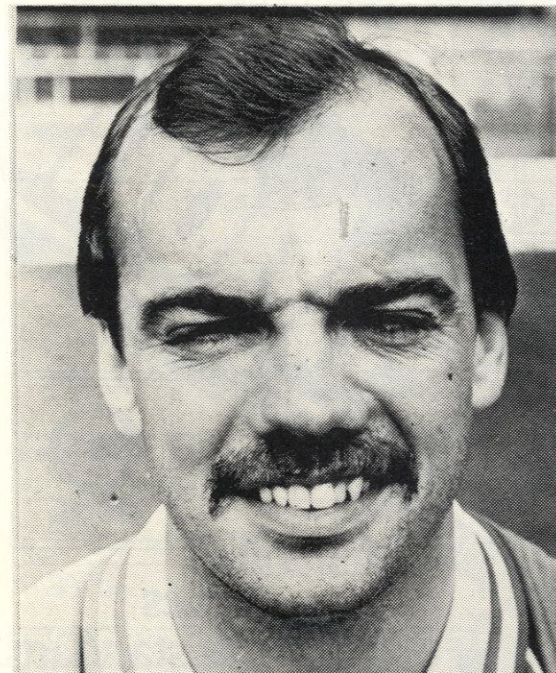
GRIMSBY TOWN

Kick-off 3.00 p.m.

Records played at today's game have been provided by the COB Record Company of Porthmadog and Wrexham

All Paints supplied on the Ground by "VALSPAR"

# ★ ★ ★ ★ ★



Full name: LES CARTWRIGHT

Birthplace: ABERDARE (S. WALES)

Car: RENAULT 18

Favourite player: GEORGE BEST

Favourite 'other' team: WEST HAM

Favourite ground: OLD TRAFFORD

Biggest thrill: CAPTAIN OF WELSH UNDER-23 SIDE

Most difficult opponent: IAN GILLARD

Favourite other sport: GOLF

Favourite actor/actress: MICHAEL CAINE

Favourite singer: PAUL MCCARTNEY

Which person in the world would you like to meet? PAUL MCCARTNEY

If not a player what job would you like to do? PROFESSIONAL GOLFER

Which all-star team would you like to play in? JENNINGS; ALBERTO, KROL, BECKENBAUER, RAY WILSON; CRUYFF, MARADONA, GERSON, PELE, JOHN CHARLES, BEST, sub. CARTWRIGHT.

LES CARTWRIGHT — has been dogged by injury this season. A Welsh international who came here in July 1977 for £40,000. Born Aberdare, he began his career with Coventry City where he won the first of his Welsh caps. League appearances 158 (22); league goals 9. Wrexham league appearances 108 (4); Wrexham league goals 6.



# SUPPORTERS NEWS ★

## AWAY TRAVEL

Wednesday, November 4th — CARDIFF CITY.  
Fare — £4.50 Adults  
£2.75 Juniors.

Depart 2 p.m.

## CABARET NIGHT

All-Star Cabaret, Friday 30th October at Centenary Club, starring Dave Barry and The Cruisers plus supporting acts. Tickets £5, (including buffet) available from The Centre Spot or any committee member.

## PROGRAMME SALE

Last month's Programme Sale was a great success. Watch out for another one in the near future.

## COFFEE MUGS

Have now arrived, price 75p.

## NEXT HOME GAME...

SATURDAY, NOVEMBER 7th

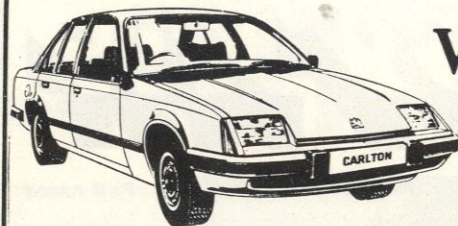
League Division Two

## WREXHAM

v

## GRIMSBY TOWN

Kick-off 3.00 p.m.



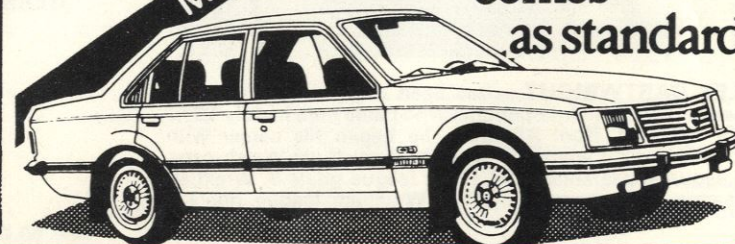
Vauxhall  
value lasts!



**Vincent Greenhous**  
Mok Rd Wrexham Tel. 263777



Reliability  
comes  
as standard.



## SPONSORKIT

These Companies and Supporters have kindly sponsored the following

Players	Playing Strip	Track Suits	Match Boots
EDDIE NIEDZWIECKI	Rees & Roberts Central Heating	Kirbys	Rees & Roberts Central Heating
IAN EDWARDS	Tildale Ltd.	Kirbys	Tildale Ltd.
JOEY JONES	Eddie & Doreen Griffiths	Kirbys	C. Blakey Painters & Decorators tel. 261486
STEVE FOX	T. H. Dodd Ltd. Wholesale Confectioners	Kirbys	Turf Hotel Supporters' Club
ALAN HILL	Cass & Jackson Insurance Brokers	Kirbys	Cass & Jackson Insurance Brokers
FRANK CARRODUS	C. M. Owen Ruthin	Kirbys	Chris & Eirawen Jones
LES CARTWRIGHT	The Jolly Tavern	Kirbys	I. Pritchard Signwriter tel. 821174
DIXIE McNEIL	Keystone Products Ltd. Miners	Kirbys	The Vogue Cinema Tel. 262269
MICK VINTER	Tony Wright Wright & Co., Engineering	Kirbys	Tony Wright Wright & Co., Engineering
GARETH DAVIS	G. Raymond Jones & W. Mike Davies	Kirbys	Junior Reds, Wrexham F.C. Supporters' Association
WAYNE CEGIELSKI		Kirbys	F. Wellum
STEVE DOWMAN	Hugh John Jones Butcher — Wrexham Market	Kirbys	
STEVE BUXTON		Kirbys	F. Wellum
BILLY RONSON		Kirbys	
PHIL BATER		Kirbys	

Regent Street, Wrexham  
phone Wrexham 51001  
Open 9.30 to 5.00 Mon to Sat 9.00 to 5.00 Sun  
**Ford**  
your main  
FORD  
dealer

## MITRE MATCH BALL SPONSORS 1981/82

Aug Sat	29	Q.P.R.	Tony Wright Wright & Co., Engineering
Sept Sat	12	Norwich	Thomas Bros. (Removals) Ltd.
Sept Tues	22	Watford	D. O. Davies, St. Austell, Cornwall
Sept Sat	26	Charlton	Escana Office Supplies
Oct Sat	17	Crystal Pal.	Trevor Jones, Brymbo John Jones, Brynteg
Oct Sat	24	Luton	Adlink Advertising Consultants
Oct Tues	27	Luton	Geoff Parkinson, Rugelay, Staffs.
Nov Sat	7	Grimsby	
Nov Tues	24	Cardiff	Jones & Williams Printers
Nov Sat	28	Oldham	O. J. Jones, First Aid Supplies for Sport & Industry tel. 364932
Dec Sat	12	Newcastle	Kent Supplies
Dec Sat	26	Bolton	Border Breweries
Jan Sat	9	Leicester	Rees & Roberts Central Heating — Wxm. 263341
Jan Sat	30	Orient	Ivor Wright, Plumbing & Heating Contractors
Feb Sat	13	Sheffield W.	F. Wellum
Feb Sat	27	Chelsea	Mrs. Anne Jones
Mar Sat	20	Blackburn	C. M. Owen, Ruthin
April Sat	3	Derby Co.	Escana Office Furniture & Supplies tel: Wrexham 265349
April Easter Mon	12	Shrewsbury	Barry Williams
April Sat	17	Barnsley	
May Sat	1	Cambridge	
May Sat	15	Rotherham	



# RESERVE ROUND UP

Saturday, October 3rd

LANCASHIRE LEAGUE

Wrexham 2 Bolton 3  
(half-time 1-1)

Wrexham scorer — Gareth Davis (2).

Wrexham: Parker, Steve Jones, D. Young, D. Baker, M. Cartwright, G. Davis, R. Hughes, M. Evans, Stephen Jones, S. Buxton, Les Cartwright, subs. A. Edwards and D. Owen.

● **Verdict:** Wrexham failed to take their chances in a good game.

Merit Man: Gareth Davis.

Saturday, October 3rd

WELSH NATIONAL LEAGUE

Wrexham 'B' 1 Cefn Albion 1  
(half-time 0-1)

Wrexham scorer — G. Evans.

Wrexham: K. Williams, Featherstone, Cruse G. Evans, Warriner, Emmerson, C. Jones, J. Williams, Bradbourne, Chapman, Fitzmaurice, sub. A. Davies.

● **Verdict:** A good game with chances at both ends.

Merit Man: G. Evans.

*For Quality Printing at  
Highly Competitive Prices*

Contact

**JONES & WILLIAMS (Printers) LTD.**

Rhosddu Road, Wrexham, Clwyd. Tel. 265837

WREXHAM'S PREMIER  
TAVERN

FULLY LICENSED  
OPEN SEVEN DAYS A WEEK

28A, HIGH STREET, WREXHAM  
telephone: 53873

## HI-FI CENTRE OF N. WALES!

- Pioneer
- Sony
- Hitachi
- Technics
- Wharfedale
- Kef

Call in now for a demonstration

All at Discount Prices

Access—Barclay—HP

Open 6 days a week



**T.E.  
ROBERTS**

26 King Street, WREXHAM.

Tel: 364404 • 364527

Croesewir Luton heno yn ail gymal Cwpan y Gyngrair. Enillodd Wrecsam y cymal cyntaf mewn steil. Ond peidiwn a bod yn rhy hyderus, bydd gan hogia Luton eu hunan-barch i feddwl amdano a byddant yn eiddgar am gael talu'r pwyth yn ol. Fe ddylem gael clincar o gem heno. Mae'r Cochion yn tueddu i ddisgleirio pan fyddant yn chwarae timau da. Gobeithio y gwelir y sbarc a welwyd yn y gemau oddi cartref yn nhim Wrecsam heno, ac y byddwch chwithau'r cefnogwyr yn sbardun iddyn nhw. Bydd yn chwith gweld Luton heb y Cymro Paul Price a aeth i Spurs yn ddiweddar.

Road Transport  
40' Box Vans • Flat  
Trailers • Tipper.

All types of vehicle on  
Hourly, Daily or  
Weekly Rates. Also  
tonnage and mileage rates

Moving Abroad

World Wide Service. Air or Sea Freight  
Packing & Crating. Full Documentation.

ESTABLISHED  
WELL OVER  
HALF A CENTURY

Road Transport

Moving Abroad

REMOVALS

Removals

Your Home is your  
Valuable Asset.  
Local & Long Distance  
Removals • Storage • Packing.

**THOMAS BROS.**  
**REMOVALS LTD.**

50, SALOP ROAD, WREXHAM.  
Telephone: WREXHAM 51821

*Bryn Howel*  
**Hotel** LLANGOLLEN  
one of the finest hotels in Wales

- The Hotel with an International reputation at the Gateway to Wales.
- EUROPEAN GOLD CROWN AWARD
- International a-la-carte menu served in the picturesque restaurant with magnificent views overlooking the Vale of Llangollen.

- The base for the Welsh team and officials
- Weddings, Conferences & Banqueting facilities seating 250
- Salmon fishing FREE to residents

This superb hotel is under the personal supervision of the proprietor  
ALBERT LLOYD M.H.C.I.M.A.



## HIPPODROME

WREXHAM 364479

Monday October 26th — 6 days

WALT DISNEY'S

"SNOW WHITE and the  
7 DWARFS"  
(Colour 'U')

plus "HANG YOUR HAT ON THE  
WIND"  
(Colour 'U')

SEE LOCAL PRESS OR RING  
THEATRES FOR PROGRAMME TIMES

## VOGUE

(Tel. 262269)

Sunday October 25th—7 days

THE ORIGINAL

"FRIDAY THE 13th"  
(Colour 'X')

also BRUCE LEE IS BACK!!  
in

"ENTER THE DRAGON"  
(Colour 'X')

SEE LOCAL PRESS OR RING  
THEATRES FOR PROGRAMME TIMES



# ★ TERRACE TALK ★ TERRACE TALK ★ TERRACE TALK ★

● Wrexham F.C. officials were happy with the tribunal decision that the club must pay Cardiff City £100,000 for Billy Ronson even though Wrexham had originally offered £75,000. At last Thursday's hearing in London City valued the player at £250,000. "It was a fair

hearing and we think that we have acquired a very good player," said general secretary Mr. Norman Wilson.

● A last minute bid to save JOEY JONES having to play a Second Division match two days before flying out to Moscow for Wales' vital World Cup tie next month — has failed. All First Division matches and the Second Division fixture between Crystal Palace and Grimsby have been cancelled so international players can have the week-end free to train with their country's squads. When Wales' boss Mike England realised Joey would still be playing on Saturday, November 14th in Wrexham's fixture at Derby County he asked The Football League if the match could be called off. But because Joey is the only squad player involved in that match the league said the match must take place.

● If you have the Wrexham v. Watford programme for the 1973/74 season you could do a deal with collector, Mr. Joe Mulkerrin. He is prepared to pay a "good price" or swap a programme for the one he wants. You can contact him at — 10 Nottingham Close, Garston, Herts, or telephone Garston 79246.

● Although Third Division Burnley has reduced admission

prices with a view to get more spectators; Wrexham F.C. will not be taking similar action. Wrexham's admission prices compare very favourably with all other Second Division clubs and the club has reduced terms for O.A.P.'s and juniors. "We had only a minimal increase last season," said general secretary Mr. Norman Wilson who pointed out the complications if prices were further reduced when season ticket holders had already paid a fixed price for the season.

● Wrexham office staff have come across a players' contract from 1910. It belonged to JOHN ROBERTS who signed the dotted line on June 30th, 1910 with the weekly wage fixed at... 30 shillings!

● Step forward ANDREW YEMM who has been nominated by a friend as Wrexham's top fan. Andrew lives in Newcastle-under-Lyme (Staffs.), which means every match is an away one for him. In fact when he travelled to Swindon Town for the first leg of the League Cup, 1st round in September — he only got back home 30 minutes before it was time to go to work the following morning!

Andrew only missed one match last season — and that was because he went to his sister's wedding.

Andrew is a big fan of JOEY JONES and the Wrexham player always makes a point of having a word with him before kick-off. Andrew, who lives at 28 Doreset Place, Clayton, Newcastle-under-Lyme, Staffs., keeps a travel log of every trip... and details of the matches as well.

## The Spinning Wheel TAVERN AND RESTAURANT

The Old Warren, Broughton, Nr. Chester.  
Now under the new ownership of Mike & Margaret Vernon.

Your Chef Mr. Peter Lee  
(Egon Ronay Recommended)

Full A la Carte Menu  
lunchtime & evening Mon.-Sat.  
SUNDAY LUNCH  
Supper License 11-30 p.m.  
All fresh vegetables!

BAR SNACKS • BUSINESS LUNCHES  
PRIVATE PARTIES & FUNCTIONS  
(By Arrangement)

Tel : Hawarden 531068.



FREE HOUSE.

# ★ TERRACE TALK ★ TERRACE TALK ★ TERRACE TALK ★

## THE WAY AWAY

To Saturday's game at Blackburn Rovers. Take Chester By-pass to A41 and then join A56. At Mickle Trafford turn left for A5117 to join M56. Leave at Junction 9; follow signs for

Preston M6. Leave after 33 miles at Junction 31 (Ribble Valley Junction). Take A677 to Blackburn. Follow signs A666 Bolton. After 1.5 miles turn left into Kidder Street 1.5 miles from Ewood Park.

## Tonight's Referee

Mr. NEIL MIDGLEY  
(Salford)

Commenced refereeing in his local leagues and progressed through to The Football League's full list.

A married man, he is an engineer. Plays cricket and squash and also enjoys gardening. He is chairman of The Eccles and District Referee's Association and an F.A. Panel speaker.

The ideal spot for:—  
WEDDING RECEPTIONS  
CONFERENCES • DISCOS  
PRIVATE PARTIES

## WREXHAM CENTENARY CLUB (Recently Extended and Refurnished)

CONVENIENTLY PLACED

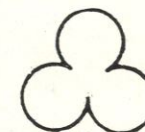
AMPLE CAR PARKING

Associate Memberships now available for the Club's Discos

For further information, telephone  
Club Manager, Mr. Ray Moore  
Wrexham 57186/53923



THE BEST CABINET-MAKERS  
& HIGH CLASS JOINERS  
IN THE AREA



- \*Special Furniture Manufacturers
- \*Fitted Wardrobes
- \*Sports Shields
- \*Welsh Dressers
- \*Specialists in Bar Fittings and Seating

## J. Pearson

Cabinet-Makers & High Class Joiners

1 REDWITHERS WORKSHOPS,  
WREXHAM INDUSTRIAL ESTATE

WREXHAM 61433

## SCORE

with the

## EVENING LEADER

## WREXHAM LEADER

Best for all the latest Wrexham F.C. news plus the local and national sports scene in the Evening Leader five nights a week and complete local coverage in the "BIG" Leader, every Friday

Tel. Wrexham 55151  
Tel. Mold 2442  
Tel. Chester 48241



# ☆☆☆☆ IN TOWN TODAY



Pasquale Fuccillo

Despite beginning this leg two goals down, one glance at Luton's magnificent away record this season shows that this tie is still wide open. Before Saturday's league fixture here at the Racecourse, Luton had won four and drawn one of their five away fixtures.

Luton won at Q.P.R. 2-1 (Aizlewood, Hill); Bolton 2-1 (Stein, Aizlewood); Leicester 2-1 (White 2); and Orient 3-0 (Aizlewood, Hill, White); and drew at Oldham 1-1 (White). This away form has helped push 'The Hatters' to the top of the division and made them strong favourites for promotion.

During the close season, manager David Pleat sold two of his internationals Paul Price and Tony Grealish. Grealish was replaced by a player in the same mould Brian Horton while Price has not been missed due to the form of Saxby and company at the back.

Since Mr. Pleat took over as manager in the Spring of 1978 he has searched the lower levels of soccer with much success for he has unearthed some bargains. good examples of these are Kirk Stephens (Nuneaton), Mike Saxby (Mansfield)



## Luton Town F.C.

and Mal Donaghy (Larne, N. Ireland).

Luton's defence has been in good form this season, superbly marshalled by big Mike Saxby, while behind them is the ever-consistent Jake Findlay, in midfield the pairing of the determination from Brian Horton and tricky skills of Ricky Hill has been paying dividends. A glance at the forward line shows why Luton are one of the most exciting sides in the division. David Moss on his day is one of the best wingers in the game, Brian Stein has always been a prolific scorer while Steve White had already scored nine league goals before last Saturday including four against Grimsby a fortnight ago.



Since Wrexham were promoted to Division Two in the 1977-78 season, we have enjoyed some exciting tussles with Luton with the honours even. Not including Saturday's game each have won two and drawn two.

One game that stands out is when the two teams met in December 1979 and Wrexham produced one of their best performances of the season to win 3-1. Frank Carrodus was making his Wrexham debut and McNeil, Edwards and Fox

# IN TOWN TODAY ☆☆☆☆

scored; while Bob Hatton scored for Luton.

Last season both fixtures ended in draws. At Kenilworth Road an Ian Edwards goal looked to have given Wrexham victory until Frank Bunn equalised in the last minute. At the Racecourse last March the game ended scoreless. Steve Jones made an impressive league debut for 'The Reds' while Yugoslav international Raddy Antic twice went close, with long range shots, to breaking the deadlock.



Luton did not enjoy considerable success in cup competitions last season although they did get through the initial stages in both the League and F.A. Cups.

In this stage of the League Cup last season they knocked out Reading, winning the away leg 2-0 (Moss, Stein), and drawing at home 1-1 (Saxby). However, Manchester City knocked them out 2-1 (Antic) at Kenilworth Road.

In the F.A. Cup they disposed of Orient away from home 3-1 (Moss 2, Ingram), before getting knocked out in the fourth round away to Newcastle 2-1 (Ingram).



Godfrey Ingram

# Kirbys

## FOR QUALITY NEW AND USED CARS

Regent Street, Wrexham Wrexham 51001  
Open 8.30 to 7.00 Mon to Fri and 9.00 to 5.00 Sat



YOUR COMPLETE FORD MAIN DEALER



# ACTION☆ACTION☆ACTION☆ACTI

● IAN EDWARDS is riding high . . .  
but Crystal Palace 'keeper Paul Barron  
beats him to this cross.

picture by Les Evans.

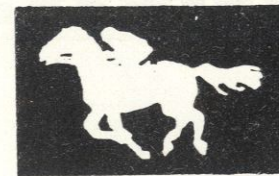


*the*  
**Village Bakery**  
COEDPOETH

The Village Bakery is a family-run business, still producing **Quality Bread** and **Rolls** using traditional fermentation methods. Your local shop is able to supply up to **16 varieties of bread** and **7 varieties of rolls**.

Wrexham (0978) 757558

**Henry Jones  
(Neston) Ltd.**



**BET WITH US  
FOR A  
BETTER SERVICE**

*Horse Racing;  
Greyhounds;  
Football;  
Special Events*

Branches throughout Wallasey,  
Birkenhead, Wirral, Deeside and  
North Wales.



**Henry Jones  
(Neston) Ltd.**

**Telephone: 051-336 5144/5**



# WREXHAM Express

We Give You  
Something  
To Cheer About



## ★ PUZZLE PAGE ★

### CLUES — ACROSS

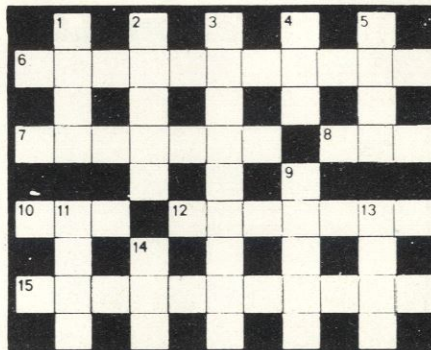
6. Winger who served West Ham United, Sheffield Wednesday, Norwich City and Chelsea (4 7)
7. Wolves' lair is at Molineux --- (7)
8. Cartwright, could be (3)
10. Hankin, perhaps (3)
12. Wigan Athletic's previous league existence was as Wigan --- (7)
15. Manchester City forward in the 1981 F.A. Cup Final (4 7)

### CLUES — DOWN

1. Southend dropped this many home league points last season (4)
2. England back with Burnley from the mid 1950s to the early 1970s (5)
- 4 & 3. Philips' club! (1.1.1. 9)
5. The location of cartilage complications (4)
- 11 & 9. Striker who left Oldham for Leicester and, by finishing top scorer in his first season, helped them to take the Division Two title in 1980 (4 5)
13. Not actually the way in for spectators but the total of all those who have gone in (4)
14. One of Clyde's colours (3)

### Answers — Crossword/Quiz:

Across: 6. John Sissons. 7. Grounds. 8. Les. 10. Ray. 12. Borough. 15. Dave Bennett.  
Down: 1. four. 2. Angus. 4 & 3. PSV Eindhoven. 5. knee. 11 & 9. Alan Young. 13. gate. 14. red.



## QUIZ TIME

1. For which player did Luton receive a club record £350,000 fee in 1978?
2. Which Luton goalkeeper gained one England cap v. Northern Ireland in 1949?
3. Which club beat Wrexham in the 5th round of the first ever League Cup competition in 1960/61?
4. Which was the last club before Burnley last season to knock Wrexham out in the first round of the League Cup?
5. In which season did Billy Ashcroft make his league debut for Wrexham?

Quiz Answers: 1. Paul Futcher (from Manchester City). 2. Bernard Stetten. 3. Aston Villa (3-0). 4. Crewe Alex. 5. 1970/71 (at Bury in October 1970).

## ££££ Wrexham F.C. Promotions WINNERS ££££



Mr. Stanley Williams High Street, Rhos receives his £500 Moneymaker cheque from Wrexham F.C. Promotions Manager Reg Slater. Mr. Williams received his cheque at Johnstown Royal British Legion. Also pictured (Left to right) Wally Tomkinson, Brenda Davies, Hughie Gauge, John Pritchard. All connected with Johnstown Legion.

£500  
WINNER

# BOSS

The Number One Office  
Supplies for the Wrexham area.

\*All paper products including  
super range of envelopes

Come to the experts  
**BORDER OFFICE  
SUPPLIES & SERVICES**  
Ash Road, Wrexham  
Industrial Estate  
Tel. Wrexham 61693  
24-hour Answering Service

- \*From a paper clip to a wall chart
- \*From a pencil to a calculator
- \*If its available Boss can get it

## Cycles for all ages.

RALEIGH : FALCON : SUN : DAWES :  
PUCH : CARLTON : ROYAL ENFIELD  
VISCOUNT : ELSWICK-HOPPER

Call in today at . . .

## G.A. MORRIS

35 LAMBPIE STREET  
WREXHAM. Tel. 265295





# ★ ★ THEY GAVE THE GAME COLOUR ★ ★

## BILLY WRIGHT

It is perhaps fitting that Billy Wright today holds the post of Head of ATV Sport for his great days as a player for Wolves and England coincided with the early days of televised soccer.

Billy's career began, however, just before the Second World

War when he was recommended by his school in Ironbridge, Shropshire and signed on amateur forms by Major Buckley, the Wolves manager at that time. After a few weeks Buckley decided that he was too small for the rigours of soccer, but after seeing the lad's obvious disappointment he decided to keep him on the ground-staff for a time.

Then came the war and Billy had a few outings at outside-right in the hastily arranged emergency games of that first war-time season. He scored quite a few goals, but then came another setback in the form of a broken ankle. Back he came, however, and tried his luck at wing-half where his fair hair seemed to be here, there and everywhere to the fans of the time who badly needed something to restore their morale in those danger-ridden times.

Though in the services he was stationed within a few miles of Molineux at Cosford and played fairly regularly for Wolves. In the last war-time season he played mainly at inside-left and it was in fact in this position that he was first selected for England though he moved back to wing-half when Frank Soo had to drop out through injury.

Billy's first Division One game was the one in which Wolves heralded the return of 'normal' soccer with a 6-1 win over Arsenal. He just missed a League Championship medal that sea-

son when Wolves were pipped by Liverpool, but honours were not far away. On the retirement of Stan Cullis he took over as Wolves captain and by 1949 was leading them to an F.A. Cup final win over Leicester at Wembley.

At this stage he was playing mainly at left-half for Wolves and right-half for England at a time when positions meant more than they do today. Then in 1954 came two more vital events. Billy led Wolves to their first-ever League Championship and also switched to the position of central defender.

It was from this position that he led Wolves to victory in those floodlit friendlies against Moscow Spartak and Honved of Budapest that were a major influence in the setting up of organised European competition. Still more glory remained for Billy as he moved into his thirties. He led Wolves to two more League Championships in 1957/8 and 1958/9 and played in his hundredth international against Scotland in April, 1959.

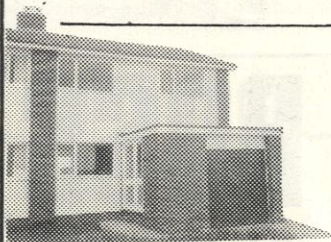
He was still in the England team that won 8-1 against the U.S.A. a month later, but then with everyone expecting him to have at least one more season, he announced his retirement after Wolves' pre-season practice match of 1959.

By this time he was married to singing star Joy Beverley and after spells as England Under-23 and Youth team manager he had three years as manager of

Arsenal. Since 1966 he has been with ATV and the enthusiasm with which he now talks about the game recalls that which he always showed as a player. The bare statistics of 490 league games for Wolves, 105 games for England in 90 of which he was captain in a career in which he was never booked make him the perfect example for aspiring young players to follow.



**J. E. PARRY (Rossett) Ltd.**  
'MASTER BUILDERS'



**The Builders of Distinction**  
**J. E. PARRY**  
(Rossett) Ltd.  
18 TEMPLE ROW, WREXHAM  
tel: 51872

## 10 YEARS AGO, OCTOBER, 1971

Wrexham stormed back from 2-0 down to win 3-2 at Torquay to gain first away win of the season. Skirton and Welsh looked to have put the home side in command but by half-time Arfon Griffiths and then Bobby Park had levelled matters. Wrexham got so much on top that they should have had more than the Albert Kinsey winner.

**Torquay:** Donnelly, Glazier, Jardine, Twichin, Edwards, Young, Skirton, Welsh, Jackson, Mitchinson, Stuckey, sub. Lucas.

**Wrexham:** Lloyd, Mason, Vansittart, Evans, May, Park, Moir, Whittle, McBurney, Kinsey, Griffiths, sub. Ingle.

Attendance 3,969.

## FLASHBACK

**Chester:** Hardie, Hughes, Donaldson, Hennin, Kennedy, Edwards, Cooper, Davies, Fitzgerald, White, Mervyn Jones.

**Wrexham:** Johnson, P. Jones, McGowan, K. Barnes, Fox, G. Evans, R. Barnes, Bennion, Wyn Davies, Metcalf, Roberts.

Attendance 14,462.

**Wrexham:** Connor, Williams, Kelsall, Jones, Spruce, MacCallum, Wootton, Bannan, Fidler, Hewitt, Tunncliffe.

● Wales team to meet England later in the month. Shortt (Plymouth), Barnes (Arsenal), Sherwood (Cardiff), Paul (Manchester City), Daniel (Arsenal), Burgess (Spurs), Kinsey (Norwich), Ford (Sunderland), Clark (Manchester City), Ivor Allchurch (Swansea), Fpukes (Newcastle).

## 30 YEARS AGO, OCTOBER, 1951

After a bright start at Tranmere Rovers, Wrexham took an early lead, Billy Tunncliffe getting one of the finest goals of his career from a Wootton corner. But Wrexham let the game slip and Tilston made it 1-1 after 25 minutes, he put Rovers ahead after half-time and his centre in the 70th gave Atkinson the third goal.

## 20 YEARS AGO, OCTOBER, 1961

Wrexham did all the attacking but had to settle for a 1-1 draw at Chester. Stan Bennion put Wrexham ahead in the 58th minute but Ron Davies got the equaliser minutes from time.

## ANCHOR MOTORS

SMITHFIELD GARAGE  
WREXHAM



**QUALITY CARS**  
with  
**QUALITY SERVICE**  
Wrexham 364151



**Panel Beating  
& Spraying**  
Insurance Work Undertaken

**DAVE  
BENNETT** — service —  
24 hour  
accident  
recovery

The Workshops, Dale Road, New Broughton.  
Phone: Wrexham 756984

CAV-SIMMS-BRYCE-BOSCH  
Pumps and Injectors Serviced by  
Specialists with Latest Equipment



## A.B. & CROFTS

Fuel Injection  
Service

Industrial Estate  
LLAY, WREXHAM

tel. Gresford 3839  
& Gresford 5280

after hours:  
Hawarden 531287

or  
Caergwrle 761400

**BOSCH**  
SERVICE



# ☆☆☆☆ FOR THE RECORD ☆☆☆☆

Date	Opponents	F	A
1981			
August			
29	Queens Park Rangers	H	1—3
September			
1	Swindon T. LC (1L)	H	3—2
5	Leicester City	A	0—1
12	Norwich City	H	2—3
15	Swindon T. LC (2L)	A	2—0
19	Orient	A	0—0
22	Watford	H	0—1
26	Charlton Ath.	H	1—0
October			
3	Sheffield Wednesday	A	3—0
7	Luton T. LC 2 (1L)	A	2—0
10	Chelsea	A	0—2
17	Crystal Palace	H	0—1
24	Luton Town	H	0—2
27	Luton T. LC2 (2L)	H	.. ..
31	Blackburn Rovers	A	.. ..
November			
4	Cardiff City	A	.. ..
7	Grimsby Town	H	.. ..
11	League Cup 3		.. ..
14	Derby County	A	.. ..
21	Barnsley	A	.. ..
24	Cardiff City	H	.. ..
28	Oldham Athletic	H	.. ..
December			
2	League Cup 4		.. ..
5	Cambridge Utd.	A	.. ..
12	Newcastle Utd.	H	.. ..
18	Rotherham Utd.	A	.. ..
26	Bolton W.	H	.. ..
28	Shrewsbury Town	A	.. ..

1982			
January			
2	F.A. Cup 3		
9	Leicester City	H	.. ..
13	League Cup 5		.. ..
16	Queens Park R.	A	.. ..
23	F.A. Cup 4		.. ..
30	Orient	H	.. ..
February			
3	League Cup S.F. 1		.. ..
6	Norwich City	A	.. ..
10	League Cup S.F. 2		.. ..
13	Sheffield Wed. (5)	H	.. ..
20	Charlton Ath.	A	.. ..
27	Chelsea	H	.. ..
March			
6	Crystal Palace (6)	A	.. ..
12	Luton Town	A	.. ..
20	Blackburn R.	H	.. ..
27	Grimsby Town	A	.. ..

## LANCASHIRE LEAGUE

August		
22	Liverpool 'A'	2—2
September		
3	Everton 'A'	2—3
5	Stockport C. 'A'	3—2
12	Barrow Res.	1—3
19	Rochdale Res.	2—2
23	Oldham Ath. Res.	1—1
26	Rochdale Res.	0—6
October		
3	Bolton W. 'A'	2—3
10	Chester 'A'	5—2

17	Manchester U. 'A'	2—4
24	Port Vale Res.	Postponed
31	Tranmere R. 'A'	H
November		
7	Chorley Res.	A
14	Morecambe Res.	H
21	Carlisle U. Res.	H
28	Bolton W. 'A'	A

QUICKLY BECOMING  
WREXHAM'S  
PREMIER HOTEL

*The Belmont Hotel*

Belmont Road,  
Wrexham. tel. 364655

- \* Excellent Cuisine
- \* Residential
- \* Free House
- \* Weddings/Private Parties
- \* Sophisticated Atmosphere

# STATISTICS AT A GLANCE ☆☆☆☆

## FIRST TEAM APPEARANCES AND GOALS:

	Football League	
	App's	Goals
NIEDZWIECKI	10	—
HILL	5	—
J. JONES	10	—
DAVIS	2	—
CEGIELSKI	10	—
DOWMAN	9	—
BATER	8	—

League Cup	
App's	Goals
3	—
2	—
3	—
1	1
3	—
3	—
2	—

CARTWRIGHT	1	—
McNEIL	8	4
CARRODUS	10	—
FOX	10	—
EDWARDS	10	1
VINTER	9	1
BUXTON	1 (1)	—
HUNT	5 (3)	1
RONSON	2 (1)	—

## Football League

## League Cup

Figures in parenthesis denote substitute appearances.



**ECONOMIC MOTORING**

BRIDGE STREET,  
WREXHAM

Tel.: Wrexham 364806

This season W. P. Griffiths (Newspapers) Ltd., are sponsoring Wrexham F.C. for the sum of £15 a point.

## LEAGUE DIVISION TWO

	P	W	D	L	F	A	Pts.
LUTON TOWN	11	8	1	2	27	11	25
WATFORD	11	8	1	2	19	10	25
SHEFFIELD WED.	11	7	1	3	13	10	22
QUEENS PARK R.	11	6	1	4	17	11	19
OLDHAM ATH.	11	5	4	2	17	12	19
CHARLTON ATH.	11	5	3	3	16	12	18
CHELSEA	11	5	2	4	15	12	17
BLACKBURN ROVERS	11	5	2	4	12	12	17
BARNSELY	11	5	1	5	15	11	16
NEWCASTLE UTD.	11	5	1	5	13	9	16
LEICESTER CITY	11	4	4	3	14	12	16
CRYSTAL PALACE	11	5	1	5	10	8	16
NORWICH CITY	11	5	1	5	14	19	16
CAMBRIDGE UTD.	11	5	0	6	15	15	15
SHREWSBURY TOWN	11	4	3	4	13	15	15
DERBY COUNTY	11	4	2	5	14	18	14
GRIMSBY TOWN	11	4	2	5	13	19	14
ROTHERHAM UTD.	11	3	2	6	12	16	11
CARDIFF CITY	10	3	2	5	12	18	11
WREXHAM	10	2	1	7	7	13	7
ORIENT	11	1	3	7	5	17	6
BOLTON WAND.	11	2	0	9	9	22	6

**LME**

**LLOYD MORRIS ELECTRICAL LIMITED**

INDUSTRIAL INSTALLATIONS  
MAINTENANCE CONTRACTORS

N.I.C.E.I.C. Approved

DESIGN & MANUFACTURERS  
OF CONTROL PANELS  
BOTH ELECTRO MECHANICAL  
AND SOLID STATE

Pandy Industrial Estate  
Pandy, Wrexham

**WREXHAM 55505** (S Lines)



# WREXHAM

1. Eddie Niedzwiecki
2. Joey Jones
3. Phil Bater
4. Steve Dowman
5. Wayne Cegielski
6. Billy Ronson
7. Steve Fox
8. Dixie McNeil
9. Ian Edwards
10. Mick Vinter
11. Frank Carrodus
- 12.



# LUTON

1. Jake Findlay
2. Kirk Stephens
3. Clive Goodyear
4. Brian Horton
5. Mike Saxby
6. Mal Donaghy
7. Ricky Hill
8. Steve White
9. Brian Stein
10. Lil Fucchillo
11. David Moss
- 12.

SCORERS: .....

.....

.....

ATTENDANCE .....

SCORERS: .....

.....

.....

RÉSULT .....

The 'Mitre' Match Ball donated by GEOFF PARKINSON, Rugeley, Staffs.

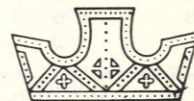
Referee: Mr. N. MIDGLEY (Salford)

Linesmen: Red Flag: E. J. Garen (Wednesfield, Wolverhampton) Yellow Flag:

K. N. Maughan (Stockport)

design and advertisements handled by Adlink, Hawarden, and printed in Wales by Jones & Williams (Printers) Ltd., Rhosddu Road, Wrexham, tel. (0978) 265837

# THE WINNER



# keltic

# LITE LAGER

BREWED BY

**border**

