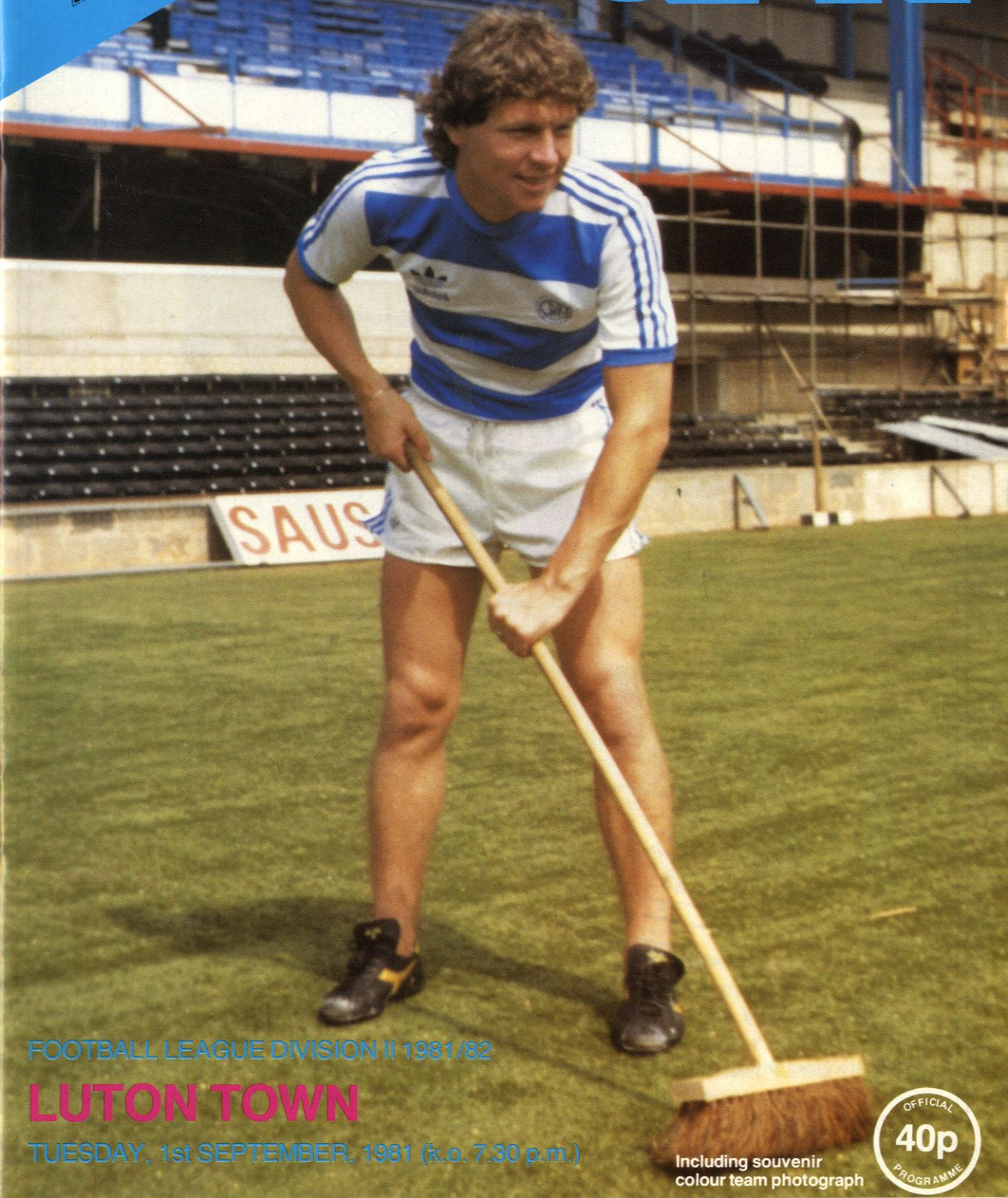


TODAY'S MATCH
IS SPECIALLY SPONSORED
BY

Agos

QPR



FOOTBALL LEAGUE DIVISION II 1981/82

LUTON TOWN

TUESDAY, 1st SEPTEMBER, 1981 (k.o. 7.30 p.m.)

Including souvenir
colour team photograph



TODAY'S MATCH SPONSOR

Argos

Your discount choice

For kitchenware, D.I.Y., gardening equipment, audio, photography, jewellery, gifts, sports goods, toys and electrical appliances.



Head Office: Argos Distributors Ltd., 112 Station Road, Edgware, Middx. HA8 7AQ.
Stores throughout the UK

GOODBYE TO ALL THAT!



Rangers' grass has gone forever and a fair chunk of it ended up in lawns, window boxes and pots belonging to QPR fans all over the country (one lady wrote in indignantly to complain about a weed growing in her sample!) White City Estate supporter *Mick Ellicott* here bids a fond farewell to the souvenir turf he took away at the last home game of the season. And now let's see if you all come to love our Omniturf sward just as much!

Photo: Nigel Wright, Acton Gazette Series



QUEENS PARK RANGERS FOOTBALL AND ATHLETIC CLUB LIMITED

Rangers Stadium
Shepherds Bush
London W12 7PA

Telephone:
General Information - 01-743 0339
Box Office - 01-743 0262

Football League Div III(S) Champions 1947/48
Football League Div III Champions 1966/67
Football League Cup Winners 1966/67
Football League Div II Runners Up 1967/68
Football League Div II Runners Up 1972/73
Football League Div I Runners Up 1975/76

Our Cover Photo Today -

Clive Allen, back at Rangers once again, happily, prepares a 'clean sweep' which he hopes will take us back into the First Division.

Photo: T. Springett



Programme Editor - Ron Phillips.
Photoset, printed and published for Queens Park
Rangers Football Club by Abacus Press,
Berkhamsted, Herts.

President: Sir Stanley Rous C.B.E.
Chairman: J.A. Gregory
Vice Chairman: J.C. Gregory
Directors: C. J. Armstrong,
A.D. Farmer M.P.S., B.A.V. Henson F.C.A.,
I.S.W. Simpson A. Williamson
Team Manager: T. Venables Secretary: R.J. Phillips F.A.A.I.
Commercial Manager: A. Ingham
Hon. Medical Officers: Dr. S. Carne O.B.E., Dr. W. McN. Styles
Physiotherapist: D. Butler
Assistant Secretary: J.P. Meeson

BUSH TELEGRAPH

The programme for our last game of the 1980/81 Season is now a collectors' item reputedly changing hands at 50p a copy. Why? Well, only 4,000 were printed but apparently the main attraction was that this programme was the last one issued for a Rangers home game on grass. If that's the case, we suggest you also hang on to tonight's programme for the occasion is no less historic. You are present when the first-ever Football League game takes place on an artificial playing surface — Omniture, a name you'll be hearing a lot about from now onwards.

We predict that Omniture will drastically change — for the better — the manner in which the nation's clubs use their stadiums. However, it does not necessarily follow that it will also change the way in which teams play soccer. We have no doubt that losing teams will leave this stadium this season blaming their misfortune solely on our new pitch. We shall probably have more to say on this subject at a later date but, for the moment, we shall listen more closely to those teams who examine their results here from the point of view of their own players' abilities and efforts. For the record, Rangers have played one or two practice games on Omniture before this evening and the general verdict is that the surface produces a fast and highly entertaining match which can only delight all spectators who watch it. We can expect thrills galore at Rangers Stadium this season!

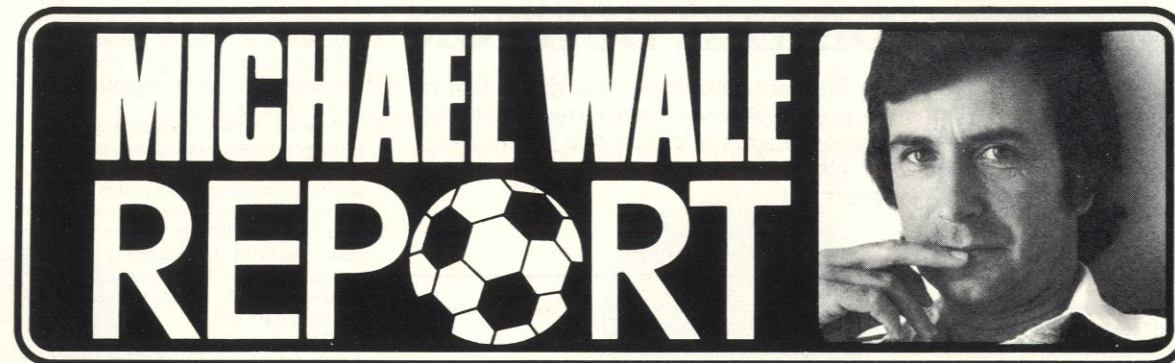
The players who will produce those thrills are those who have just finished the finest pre-season campaign we can remember. We played in Sweden, Ireland and London and whipped everybody out of sight — scoring so many goals we lost count! (See 'Results Desk' for details). The squad was already a good one but has had its standard raised even higher by the welcome return of Clive Allen — back where he really belongs — and John Gregory from Brighton. We have to say 'Goodbye And Thanks!' to a few well-known names, however — our best wishes for success in their new clubs go to Steve Wicks, Chris Woods, Don Shanks and Martin Rogers. More sad news is that Martyn Busby's injured knee has finally forced him to stop playing — the loss of this player's special talents is a blow to the sport.

Programme Price

We are continuing the policy of publishing occasional extra-special 40p programmes for our bigger matches but, in common with other London clubs our rate for the smaller, standard issues will be 35p — the result of steadily rising costs. As a matter of interest, we make very little extra profit from the 40p programme as the 25% increase in pages and the additional colour photography take away almost all the extra income. However, we know our readers like these attractive, larger publications and will do our best to keep producing them.

Match Sponsor

Many things have changed at this stadium during the summer and we will discuss these in detail in our next programme. (Some building preparations may not be quite completed tonight so please take care as you enter and leave the stadium.) One thing that has not changed, however, is the superb support we get from the firms and organisations who sponsor our games. Our old friends, Argos, are tonight's Match Sponsors and we express our warm appreciation of their handsome gesture once again.



Michael will be interviewing Rangers players and staff during the season as well as giving his own views on the game. He appears on the nightly Thames News (ITV). On Friday nights he presents a look at the weekend ahead "Weekend Wale".

Taking a line from the arts pages of the more serious papers, it has often been argued that the scenery for a show should not be so good that in the end it dominates the show. Well, there can be no argument as to who is the star of our first home game this season: The pitch. Everywhere I have been over the past few months almost the first question I have been asked, as soon as people know I'm a QPR fan is: "What's this new surface like?" We will know a bit better in 90 minutes time, but having played on several sorts of artificial surfaces over the years I have no hesitation in saying that the new Rangers pitch is the best of its kind I've come across. Tomorrow's match reports, I guarantee, will be saying as much about the pitch as the game. Losing managers, no doubt, will blame it, and if they are so lucky as to win equally certainly they will praise it. Rangers have taken a gigantic gamble, for which chairman Jim Gregory should be applauded. Personally I believe that we will be the first of many clubs switching to this or other all-weather surfaces. Now we need the support not only of the paying customer, but organisations of other sports and events to make Loftus Road what I have always said it is: The real theatre of Shepherds Bush.

And one of the most interesting interviews I have conducted for Thames News in the past few months was with Tony Banks, new leader of the arts at the GLC. Ken Livingstone and his followers have shown some pretty eccentric form so far in their rule, but many of their ideas should be listened to, if not agreed with. The reason for the interview with Tony Banks was about his ideas for the arts in London. Personally I think far too much importance is put upon the arts at the expense of sport. I have argued in the past that Rangers are far more worthy of a grant than say the Bush Theatre, who provide a bus to bring many of their audience from outside our borough! Tony Banks is a supporter of Chelsea (he can't help that) but he does have some very interesting ideas about what part football should play in our community.

In the past he has been harpooned for arguing that soccer should be on the rates, like many other things. This was a short-circuiting of his argument. What he does feel, and I agree, is that soccer is just as important in the community as the arts. And if a football club plays a full part in the community around it then it should be worthy of a grant.

Not that many clubs would qualify in the Greater London area. Frankly soccer clubs in the capital do little for those around them, except choke up parking around your home every other week. But with the new surface Rangers can play its full part in the life of the district. I see it being used by schools during the day, at suitable recompense from ILEA; holding general training evenings headed by the manager or one or two leading Rangers players (this would be charged for); as well as social evenings where members of the public could meet and discuss topics of interest with several players. Videos of past and recent matches could be shown. Rangers would become a full-time word in the community. Jim Gregory has presented the neighbourhood with a club worthy of the greatest support in the land, just one more step and it will be a full time member of the community around it. The move to an all weather surface has taken great bravery. We, the supporters, must underline its success.

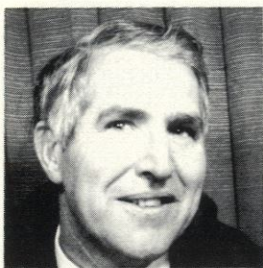
It is good to welcome back Clive Allen. A pity that he ever agreed to leave. If only Paul Goddard had not been sold! But we must count our blessings. How West Ham never signed up Clive from Crystal Palace I will never know. Undoubtedly a big mistake in their new career in the First Division. What a pair they would have made again. John Gregory is a great capture from Brighton, as we wanted him some time ago. I recall his fiery displays for Aston Villa. An asset indeed. I will be writing about these players and speaking to them in the next two programmes, but I felt that for the first programme I should take an overall view. I can record that never has there been a better spirit before the opening of a season. And that is my view, and no-one else's. I would prefer we were not favourites with the bookmakers, not only to go up, but to be champions. Personally I think Leicester City a very good team indeed, who should never have been relegated, have a chance. Last season there was only one team in the Second Division and that was West Ham. We made a miraculous recovery after behind the scenes difficulties, and in the end we expected too much from the team. It put Terry Venables under enormous pressure. In fact he saved the club from relegation. I think it is a good thing that he has many interests outside the game. It gives him a sense of proportion often lacking in other managers, however great.

I have great respect for him as a man who not only created a top viewing TV series in Hazell (with Gordon Williams happily back supporting Rangers) co-wrote a far seeing novel, but also successfully runs pubs and other businesses. One of the troubles with the British is that they seem jealous of success. Let's all revel in the fact that our manager is a success. And like another of my heroes Mike Brearley, a man who touches others with his luck. And I'm not quite sure that Terry even likes me!

So it should be said at this point that since the mid-sixties Rangers, through the person of the programme's editor Ron Phillips, have given me total freedom in what I write. Not many people believe that. But it is true. Obviously when I write profiles of players I am not going to say they are bad. They are usually very good, otherwise they would not be in a job, but honestly I write for Rangers supporters, who would not wish to read carping articles about their players.

Everywhere you meet our supporters. We are always being knocked because, it is said, there are not many of us. But there are. Filming Weekend Wale in Hyde Park in the summer I was suddenly grasped by two West Indians ... Rangers supporters. Denis Tuohy of TV Eye, is one, with his son; all of Shepherds Bush is, and when I wore the Superhoops shirt in a celebrity donkey derby at Ascot racecourse, an event of gigantic proportions in which we were a small part, a lot more girls became Rangers supporters simply because they liked the shirt! So there you are. By the way we were just beaten. My owner, who had put up £100 towards the Stoke Mandeville appeal (the day raised £250,000) expected to win, but the starter Derek Thompson of ITV racing, let them go before I was even on the moke!

In disagreement with the footballing press I totally agree with Manchester United's dismissal of manager Dave Sexton, because of pressure from the fans. I spoke with several Man United fans last season, and it was not success they wanted back, but style and communication. Let us hope that even if, unthinkable, we don't get success this season Jim Gregory and Terry Venables will lead us towards style and communication! I remain yours obediently, a Rangers fan!



DEREK BUXTON

Our Statistics Wizard has assembled one of the best collections of club records in the Football League and uses it to look back on the other times we have played today's visitors.

Good evening. Welcome to QPR's 82nd season of professional football, and our 12th season of 2nd Division football.

This match will be our 3225th professional game, our record so far is:—

P 3224 W 1298 D 810 L 1116 F 4811 A 4516

Our record in 2nd Division football to date is:—

	P	W	D	L	F	A	P
Home	231	133	48	40	440	230	334
Away	231	53	70	108	227	381	176
Total	462	186	138	148	667	611	510

Luton have only won 2 matches here in 57 years. Their 2 successes were in 1948, when they beat us 3-0, and in 1970, when they won 1-0. In the last 5 matches down here, we have taken 9 points out of 10.

We lost 0-3 at Kenilworth Road last season, thus ending a sequence of 5 consecutive draws. We haven't won at Luton since 1952. We beat Luton 3-2 on this ground in November last year. Dean Neal (2) and Andy King scored our goals. Brian Stein and David Moss scored Luton's goals.

☆ The last time that we achieved the "double" over Luton was 32 seasons ago,

when, in 1949/50 we beat them 3-0 on this ground and 2-1 at Kenilworth Road.

☆ Luton have to go back 57 years since their last "double" against us. They beat us 2-0 in both matches.

☆ Tonight we shall be trying to improve on a home record of 5 games without defeat, in which we haven't conceded a goal for 328 minutes. (32nd minute against Derby County)

☆ We welcome back Clive Allen tonight. If he played at Wrexham, he will have completed 50 League matches for us and, should he have scored at Wrexham, he

would have scored in 4 consecutive away matches for us — having scored at Orient, Charlton (2) and, strangely, Wrexham (his last match for us before being transferred to Arsenal/Crystal Palace)

☆ Hopefully we will have done quite well at Wrexham, for we have taken 5 points out of the last 6 there. Traditionally we always do well in our opening home match in Division 2. We haven't lost our opening home game since August 1970 in a Second Division match (we lost 1-3 to Leicester). Since then, we beat Sheffield Wednesday 3-0, Sheffield Wednesday 4-2, Bristol Rovers 2-0 and Bristol Rovers 4-0.

☆ One other statistic — we've played 9 home matches on September 1st, and so far, we've never lost (we've won 4 and drawn 5)

☆ Finally, may I congratulate Matthew Heasman of Stanmore, Middlesex, on a really accurate prediction that he made way back last October. His final prediction for the end of the season was:—

Home						
P	W	D	L	F	A	
42	11	6	4	34	9	
Away						
P	W	D	L	F	A	Pts
3	7	11	17	28	41	
Our final record was:—						
Home						
42	11	7	3	36	12	
Away						
4	6	11	20	38	43	

I think everyone must agree this was a remarkable feat. Would he like to predict the outcome for this season?



TONY PULLEIN

The League's top Feature Writer examines the past playing history and achievements of today's opponents. Tony also writes the Pen Pictures on the back page.

Luton manager David Pleat firmly believes it will be third time lucky for the Hatters this season — in spite of the fact that he sold two internationals, and another experienced mid-field player, for almost £400,000 during the summer break.

For the past two seasons Luton's quality football has received widespread acclaim. They looked set for a return to the First Division in 1980 until they faltered towards the end to miss by four points and finish sixth.

Last season they recovered from a poor start to finish strongly. But a home defeat by Oldham at a critical point close to the end proved disastrous. This time they took fifth place but missed target by a mere two points.

Their hopes this season clearly depend upon how well they cope with the loss of Welsh international centre-back Paul Price — sold to Tottenham for £250,000 — Republic of Ireland midfield cap Tony Grealish (who has joined Brighton for £100,000) and another midfield man Alan West, now with Millwall following a £45,000 move.

Mr Pleat said, after selling Price, that he had full confidence in the players on his staff to fill this void. He took very much the same view just a year earlier, following criticism of his sale of high-scoring Bob Hatton after he had hit 18 goals in 1979/80.

For some weeks last season Mr Pleat must have felt pretty uncomfortable as he struggled to find a goalscoring attack. But eventually his judgement was vindicated because Brian Stein returned to top form with 20 goals and proved an ideal partner for David Moss, who struck 19. Likewise, it could be a week or two before Luton's new-look defence settles down.

The loss of the two midfield men may not be as critical as it might appear at first sight. For Mr Pleat invested £100,000 wisely in Brighton's great-hearted midfield player Brian Horton. Horton was a key figure in Brighton's rise from the Third to the First Division and he is sure to be a big inspiration to his new colleagues for he is a player who thrives upon new challenges. His sights are firmly set upon a return to the First Division with Luton next year.

West was being phased out of the Luton side, anyway, and the club has plenty of midfield talent in players like Radi Antic, a Yugoslav international, Ricky Hill and Mark Aizlewood.

It's nothing new for Luton fans to see star players leave the club. The first real exodus came when the club faced closure some seven or eight years ago. They were forced to sell to keep alive but the amazing thing is that they have continually produced new players who have proved every bit as good as the ones who left.

The list of departures includes such men as Malcolm Macdonald, Don Givens, Chris Nicholl, Steve Buckley, Barry Butlin, Vic Halom, Bob Hatton and the Fletcher brothers — Ron and Paul — who were all players of considerable stature.

Luton were one of several leading clubs in the Second Division who suffered an attack of jitters last season. Yet, when they defeated us 3-0 at Kenilworth Road in April and then won their next matches against Bristol Rovers and Chelsea, they looked likely to clinch it.

With four games to play they were level with Swansea and only two points behind third-placed Blackburn who had played an extra game.

It was at that point that they lost that critical home game against Oldham. Though they managed to draw 2-2 at Swansea, they were virtually out of the running and, in spite of a fine 3-0 winning finish at Bolton, the Hatters had to settle for fifth place.

We all expect competition to be fierce at the top of the Second Division this season but Luton appear to be one of the sides likely to be closely involved with the promotion chase once again.



STAR PORTRAIT



Here's a new-look SIMON STAINROD who has been in superb goal-scoring form in pre-season games. (If you think his Wimbledon companion looks familiar, it's because this is Rangers' former player, Tommy Cunningham).

Photo: Keith Creckendon



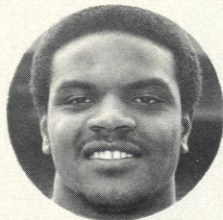
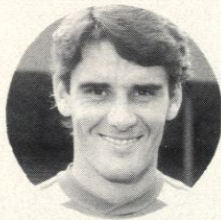


THE 1981/82 RANGERS

ALL YOU WANT TO KNOW ABOUT OUR PLAYING STAFF



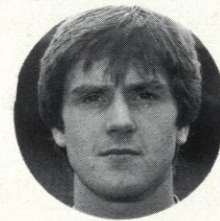
Born	CLIVE ALLEN London 20.5.61	STEVE BURKE Nottingham 29.9.59	JOHN BURRIDGE Wolverhampton 3.12.51	TONY CURRIE Edgware 1.1.50
Weight	12 st. 0 lbs.	11 st. 8 lbs.	13 st. 6 lbs.	13 st. 0 lbs.
Height	5 ft. 10 ins.	5 ft. 9½ ins.	5 ft. 10 ins.	5 ft. 11 ins.
Previous Club	Arsenal, Crystal Palace	Nottingham Forest	Workington, Blackpool, Aston Villa, Crystal Palace.	Watford, Sheffield United, Leeds
Caps	—	—	—	17 (England)



Born	IAN GILLARD Hammersmith 8.10.50	JOHN GREGORY Scunthorpe 11.5.54	BOB HAZELL Kingston (Jamaica) 14.6.59	ERNE HOWE London 15.2.53
Weight	13 st. 7 lbs.	12 st. 2 lbs.	14 st. 4 lbs.	12 st. 11 lbs.
Height	6 ft. 1¾ ins.	6 ft. 1 in.	6 ft. 1 in.	6 ft. 2¾ ins.
Previous Club	Juniors	Aston Villa, Brighton	Wolverhampton	Crystal Palace, Fulham
Caps	4	—	—	—



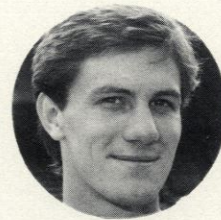
Born	WARREN NEILL Acton 21.11.62	MARK O'CONNOR Basildon 10.3.63	GLENN ROEDER Woodford 13.12.55	TONY SEALY London 7.5.59
Weight	11 st. 7 lbs.	9 st. 11 lbs.	12 st. 12 lbs.	11 st. 10 lbs.
Height	5 ft. 10 ins.	5 ft. 6½ ins.	6 ft. 2 ins.	5 ft. 6 ins.
Previous Club	Juniors	Juniors	Arsenal, Orient	Southampton, Crystal Palace
Caps	—	—	—	—



Born	TERRY FENWICK Co. Durham 17.11.59	WAYNE FEREDAY Birmingham 16.6.63	MIKE FLANAGAN Ilford 9.11.52	GERRY FRANCIS Hammersmith 6.12.51
Weight	10 st. 12 lbs.	10 st. 11 lbs.	12 st. 5 lbs.	12 st. 6 lbs.
Height	5 ft. 10 ins.	5 ft. 9¼ ins.	5 ft. 10½ ins.	5 ft. 10½ ins.
Previous Club	Crystal Palace	Juniors	Spurs, Charlton Athletic	Crystal Palace
Caps	—	—	—	12 (England)



Born	PETER HUCKER Hampstead 28.10.59	ANDY KING Luton 14.8.65	GARY MICKLEWHITE Southwark 21.3.61	IAN MUIR Coventry 5.5.63
Weight	12 st. 7 lbs.	12 st. 0 lbs.	10 st. 3 lbs.	11 st. 0 lbs.
Height	6 ft. 4 ins.	5 ft. 9½ ins.	5 ft. 8 ins.	5 ft. 6½ ins.
Previous Club	Juniors	Luton Town, Everton	Manchester United	Juniors
Caps	—	—	—	—



Born	BARRY SILKMAN London 29.6.52	SIMON STAINROD Sheffield 28.2.59	IAN STEWART Belfast 10.9.61	GARY WADDOCK London 10.3.62
Weight	11 st. 2 lbs.	12 st. 12 lbs.	10 st. 6 lbs.	11 st. 9 lbs.
Height	5 ft. 8 ins.	6 ft. 5 ins.	5 ft. 6½ ins.	5 ft. 10 ins.
Previous Club	Crystal Palace, Plymouth A, Luton T, Man. C., Brentford.	Sheffield United, Oldham Ath.	Juniors	Juniors
Caps	—	—	—	4

QUEENS PARK RANGERS F.C. FIRST TEAM SQUAD 1981/82

(Back Row): Alan Harris (Asst. Team Manager), Jock Skinner (Kit Manager), Gerry Francis, Ernie Howe, Peter Hucker, Bob Hazell, John Burrridge, Tony Currie, Mike Flanagan, Dave Butler (Physiotherapist), Terry Venables (Manager). (Front Row): Clive Allen, Andy King, Tony Sealy, Gary Waddock, Glenn Roeder, John Gregory, Simon Stainrod, Ian Muir, Terry Fenwick.

(Photo: Keith Creckendon)



SECOND DIVISION INFORMATION

Club and Postal Address	Box Office Tel. No.	Seat Tickets Available	Terrace
BARNLEY F.C. Oakwell Ground Grove Street, Barnsley South Yorkshire	0226-295353	£3.20 Bookable 2 Weeks	£1.90 Adults £1.40 JUV/OAP
BLACKBURN ROVERS F.C. Ewood Park Blackburn	0254-55432/3/4	£3.50, £2.70 £1.75, £1.35 JUV/OAP Bookable 2 Weeks	£1.70 Adults £1.10 JUV/OAP
BOLTON WANDERERS F.C. Burnden Park, Manchester Road Bolton BL3 2QR	0204-389200	£3.50, £2.50 £1.50 JUV/OAP Bookable 1 Month	£1.80, £1.50 Adults £1.00 JUV/OAP
CAMBRIDGE UNITED F.C. Abbey Stadium, Newmarket Road Cambridge CB5 8LL	02205-2170	£3.50, £3.00, £2.50 Bookable Anytime	£1.50 Adults £1.00 JUV/OAP
CARDIFF CITY F.C. Ninian Park, Slopier Road Cardiff CF1 8SX	0222-398636	£4.00, £3.50, £2.70 £2.00, £1.80, £1.50 Bookable Anytime	£1.60 All
CHARLTON ATHLETIC F.C. The Valley London SE7 8AW	01-858-3711/2	£4.00 Bookable 1 Month	£2.50 All
CHELSEA F.C. Stamford Bridge Ground Fulham Road, London SW6	01-385 5545	£6.50, £5.25, £4.50, £4.25, £3.50, £3.00 Bookable 1 Month	£2.00 Adults £1.25 JUV/OAP
CRYSTAL PALACE F.C. Selhurst Park London SE25 6PU	01-653 3338	£4.50, £3.50, £3.00 Enclosure £2.00 Bookable 1 Month	£1.80 Adults £1.00 JUV/OAP
DERBY COUNTY F.C. The Baseball Ground Derby DE3 8NB	0332-40105	£3.80, £3.30, £2.70 Bookable 2 Weeks	£2.50 Visitors
GRIMSBY TOWN F.C. Blundell Park Cleethorpes South Humberside DN35 7PY	0472-61420	£3.50 £2.50 JUV/OAP Bookable 2 Weeks	£1.70 All
LEICESTER CITY F.C. City Stadium Filbert Street Leicester LE2 7FL	0533-551155	£2.50, £3.50, £3.00, £4.00 £1.20 (Two children accompanied by adult) Bookable 2 Weeks	£1.80 All
LUTON TOWN F.C. 70-72 Kenilworth Road Luton, Bedfordshire	0582-411622	£3.00 Bookable 2 Weeks	£2.00 Adults £1.00 JUV/OAP
NEWCASTLE UNITED F.C. St. James' Park Newcastle Upon Tyne NE1 4ST	0632-328361	£2.50, £3.00, £3.50 Bookable 10 days	£1.70 Adults £0.70 JUV/OAP
NORWICH CITY F.C. Carrow road, Norwich Norfolk NR1 1JE	0603-612131/2	£4.00, £3.50, £3.00, £2.00 Bookable 2 Weeks	£1.60 Adults £1.00 JUV/OAP
OLDHAM ATHLETIC F.C. Boundary Park Oldham OL1 2PA	061 624 4972	£3.40, £2.80, £2.60 £1.80, £1.70, £1.40 £1.00 JUV/OAP Bookable 2 Weeks	£1.60 All 30p Car Park
ORIENT F.C. Leyton Stadium Brisbane Road Leyton E10 5NE	01-539 2223	£5.00, £3.50, £3.00, £2.50 Inc. Programme Bookable 2 Weeks	£1.80 All
ROTHERHAM UNITED F.C. Millmoor Ground Rotherham	0709-562434	£3.20, £2.40, £2.00, £1.90 £1.70, £1.40, £1.20 JUV/OAP Bookable Anytime	£1.70 Adults £1.00 JUV/OAP £1.70 Visitors
SHEFFIELD WEDNESDAY F.C. Hillsborough Sheffield S6 1SW	0742-343123	£3.60, £3.20 £2.60, £2.30 JUV/OAP Bookable 2 Weeks	£1.70 Adults £1.20 JUV/OAP
SHREWSBURY TOWN F.C. The Gray Meadow Shrewsbury	0743-56316	£3.00, £2.80, £2.00 £2.00, £1.20 JUV/OAP Bookable 1 Month	£1.50 All
WATFORD F.C. Vicarage Road Stadium Watford, Herts WD1 8ER	0923-49747	£4.00, £3.50, £3.00, £2.50 £2.50 JUV/OAP Bookable 1 Month	£2.00 All
WREXHAM F.C. Racecourse Ground, Mold Road Wrexham, Clwyd LL11 2AN	0978-262129	£3.30, £2.80, £2.20 £2.50, £2.00, £1.50 JUV/OAP Bookable 2 Weeks	£2.00 All

RANGER to RANGER

This is the column that gives you a chance to air your views in print. The replies are by Editor, Ron Phillips.

If you have a spare photo, send it along with your letter and we'll try to find room for it.



Twickenham
Middlesex TW2 6HQ

Dear Mr. Phillips

Congratulations on bringing Clive Allen back to QPR. I, like many Rangers fans, was very disappointed when we sold him to Arsenal, so I am doubly delighted that Rangers have bought him back at an £80,000 profit on the original deal.

I am equally delighted for Clive that, after a season of uncertainty, he is back where he belongs and that by next season he will be back in the 1st division — with Rangers!!

When I heard he was coming back to Rangers I looked through my old programmes to look at his previous record with us and discovered that in 153 appearances for the Youth team, Reserve team and 1st team he scored 112 goals; that's more than 2 goals every 3 games — an incredible achievement!

However, I am disappointed that Steve Wicks has left us and I don't understand why, after being quoted as saying that he wanted 1st division football, he should go to Crystal Palace!!! But I am so glad Rangers got so much money for him to buy a first class replacement and that Rangers did everything possible to persuade him to stay. After saying that, I would like to thank Steve for what he has done for Rangers and wish him every success in the future.

After all the publicity for the new pitch, very little has been said about the building of the new stand. I would just like to point out that when it is completed Rangers Stadium will have been completely rebuilt in 13 years!! This is surely a record.

I would like to thank Jim Gregory for thinking of the fans so much in doing this, especially I understand that a lot of the money has come out of his own pocket. Although he has been controversial at times, the changes that have occurred at Rangers during his chairmanship have been immeasurable and I am sure I am joined by all Rangers fans in thanking him for his enormous contributions to Rangers. I hope he remains chairman for a long time to come.

Yours sincerely
RICHARD PORTER

★ Well, we were going to write a long Editorial about all these points, Richard, but you've covered just about everything. Thanks for the "unsolicited tribute!"



Edgeware
Middlesex HA8 5BQ

Dear Ron

Just a few thoughts on our programme — there being a consensus of opinion from our little coterie in Row G entrance K.

1) Less meaningless statistics, ie "If R's win today it will be first time they've beaten a team containing six red heads all called Colin" — Total rubbish!

2) Let's have more facts on previous games between the club's hopefully in chronological order.

3) Michael Wale's column is excellent but is he a paid publicist for the NASL? Football will improve with attitude skills etc. not silly shoot outs which reflect the Americans' need to have winners. Not any real improvement in the game! More power to FIFA's elbow!

Keep up the excellent work. We all look forward to winning the division next season.

Regards

GREG PARDINGTON

P.S. Well done for continuing to look after the season holders!

★ Controversial stuff. Greg. Remember the "Statistics" feature always attracts a high vote in our regular 'Programme Questionnaires'. What do other readers think?

Shamva Goldmine
P.O. Box 56
Shamva
ZIMBABWE

Dear Sir

I am a twenty-three year old English boy living here in Zimbabwe, and I have been an avid Queens Park Rangers fan for some years now.

I was wondering if you could possibly help me in getting a female pen-pal from the Bayswater area of London who supports Queens Park Rangers F.C. aged between 20-35 years old. I thought perhaps you could print my name and address in your programme, along with some of my interests which include: dancing, acting and collecting pictures and information on movie stars, and of course supporting Q.P.R.

I really do hope you are able to help me, as I would love a female pen-pal from Bayswater, because I know this area of London very well.

Hoping very much to hear from you.

Yours faithfully
TONI ZÜRCHER

Dear Ron Phillips

I am 15 and have watched Queens Park Rangers as long as I can remember. My dad has supported them for more than 30 years. We used to live near North Pole Road, but we moved to Stevenage six years ago. My dad used to have a season ticket but can't see Rangers much because he gets home from work late. I've started to stand now, making my own way down to Rangers. One complaint. My cousin came down with me, wearing steel toe-caps because he had just been at work with his dad. A policeman very nearly chucked him out of the ground. There is no ruling about steel toe caps, and many people come straight from work. My cousin was not causing any trouble and he is too small to kick someone. I can understand a massive six-foot kid with steel toe-caps. My cousin is 4ft. 12ins.

But never mind. I would like to congratulate the team on a great last game. My clumps of turf look like growing. I think Jim Gregory should be thanked as well as the directors.

Here's my song for singing the blues.

When I feel like singing the Blues

The Rangers win the Chelsea lose

O Gregory, we got 'A' hand it to you.

Well done Rangers!

COLIN ASHLEY

★ We sympathise. Colin, but the police have to protect well-behaved supporters from likely trouble-makers and it is a fact that some steel-capped spectators fall into this category. In the interests of stadium safety as a whole, they have to ban this type of footwear. (We're sure your 4ft. 12ins. cousin is well-behaved — it's the 4ft. 24ins. fans that bother us!)

Tel: East Grinstead
311114

East Grinstead
West Sussex

Dear Mr Phillips

I am unable to attend every game but since we are going to get promoted this year, I hope to attend the majority of them. However, I have not convinced my wife of Rangers' intentions, so there is a spare seat in my car. I travel from East Grinstead through Godstone, Banstead, Sutton, Cheam, Worcester Park and Wimbledon. Through your programme I wondered if you could put me in contact with any other Rangers' supporters who would like a free lift to Rangers games. (the company would be appreciated).

Thank you

PAUL VINCE

★ Thanks, Paul — we're sure someone will appreciate this offer.

EVERYBODY'S TALKING ABOUT US!

Rangers always seem to figure prominently in the pages of the National Press — and not always the Sports Page. 'The New Standard' famous cartoon strip "Augusta" is the latest to feature QPR activities!



LONDON RUGBY 7's FESTIVAL ON SUNDAY SEPTEMBER 13th 1981 5 hours of Exciting Rugby Union

Come along to this stadium to watch the London Rugby 7's Festival. Seven a side rugby played on the unique Omniturf surface is an open, exciting game, full of action and a delight to watch.

There will be fifteen games, starting at 1.00 pm involving London's top sides: Blackheath; Metropolitan Police; Richmond; Harlequins; Rosslyn Park; London Irish; Saracens; London Scottish; Wasps; London Welsh. And guest sides — Borough Road College and Public School Wanderers.

The tournament will be played on a pool basis progressing to semi-finals and the final at 6.15 pm. Accommodation will be seated only.

We think you will like watching the oval ball game. To help convince you that you'll enjoy your Sunday afternoon, bring this programme with you and save £1 off a £3 seat. £2 is not much to pay for five hours of fun. You might even become a regular rugby watcher.

Tickets £5 (limited number) £3 & £2 all seated.

Children under 14 half price.

Obtainable from Q.P.R. Football Club, any of the above Rugby Clubs,
at the gate on the day or from Keith Prowse ticket agencies.

LONDON RUGBY 7's FESTIVAL AT Q.P.R. SHEPHERDS BUSH, FIRST MATCH 1.00 P.M.

adidas®

The mark of a winner

**OFFICIAL SUPPLIERS OF PLAYING KIT
& FOOTWEAR TO
QUEENS PARK RANGERS FOOTBALL CLUB**
Replica Kits are available at most adidas stockists

EXECUTIVE BOX DAY LET PACKAGE

Would you like to watch Queens Park Rangers play football from the warmth and comfort of a Luxury Executive Box. You and your guests can relax over a pre-match drink and meal in the privacy of your own Box, enjoying a superb view of all the action. Queens Park Rangers F.C. are retaining five Executive Boxes for Match Day Lets. We are intending to let these Boxes in Packages of 2 or 4 games.

Both Packages will include the following:-

★ Exclusive use of brand new Executive Box seating 8/10 people. ★ Pre-match 4-course Lunch with full waitress service. ★ PA announcement of welcome to company and guests. ★ Free Match Programmes. ★ Television.

EXTRAS:-

★ Wine and Drinks available, but not included in Package. ★ Company name on front of Executive Box, by arrangement.

Overleaf is a Fixture List showing Home matches and the price per package / match, subject to availability, is as follows:-

"A" Games: Newcastle United; Crystal Palace; Norwich City; Leicester City; Chelsea; Derby County; Orient; Charlton Athletic; Sheffield Wednesday; Watford; Plus all Football League and Football Association games.

Per Match Package — **£295.00 + VAT**

"B" Games: Blackburn Rovers; Rotherham United; Oldham Athletic; Cardiff City; Barnsley; Wrexham; Grimsby Town; Shrewsbury Town; Bolton Wanderers; Cambridge United.

Per Match Package — **£240.00 + VAT**

Boxes will be allocated on a first come, first served, basis. Single day Box Lets may be available from time to time — indicated price as stated above + 10%. If you are interested in the above Package(s) please telephone Ian Simpson or Chris Armstrong on 01-740 7740.

RANGERS YOUTH REPORT

by Youth Development Officer, Chris Gieler

At the end of last season we saw the continued development of our youth team with players like Warren Neill, Ian Muir, Wayne Fereday and finally Ian Dawes breaking their way into the First Team along with Dean Wilkins who was a member of our youth side the season before last. With these encouraging signs and the promise these lads showed on their league debuts, I am sure that we will be hearing far more from these in the future.

Currently Youth Team Manager, George Graham and myself are trying to build a new "youth team" which takes approximately two years to establish itself. Players like Graham Benstead, Martin Duffield, Alan McDonald, Dugie McClure (who have all made their reserve team debuts) are showing the same sort of promise as we saw in their predecessors. Recently Graham Benstead and Dugie McClure have been selected for England Youth honours — we wish both guys well.

Our new "crop" of seven apprentice professionals joined us in July and I would like to welcome these boys to the club and wish them well in their footballing careers.

To date we have played a number of friendly games blooded these new raw recruits and we have been pleased with their efforts. Of special note were the good performances from Alan Comfort (winger) and Ian Knight (full back).

This season will see the introduction to our youth team of our four England Schoolboy Internationals from last season, Steven Crocker, Gary Levett, Gary Cooper and David Keslake, with Gary Parker from Oxford and Barry Prince from Harrow who will be the corner stone of our youth team in two years time — again we wish these boys a happy future with the club.

At this time of the year I always take this opportunity of thanking Les Boyle and Ron Berry for their assistance in keeping the lads fit and healthy — keep up the good work. Currently we have a number of associate schoolboys engaged on the long Wembley trek to become Schoolboy Internationals. I am receiving rave reports from three of our lads — Darren Anderson, Dennis Flatbury and Steve Scott. I am sure that we will be well represented at Wembley again — can we dare hope for a "hat trick" of England Schoolboy "Captains". Who will follow on from Douglas McClure (1980) and David Keslake (1981) — let's hope that it is a Rangers player once again.

IN MEMORIAM

R.A. STARNES, FCIS, FAAI, FSCA, ATII

Our last programme of the 1980/81 season carried the sad news that our Director, Reg Starnes was retiring from the Board. Just a month later, on 31st May 1981, we heard even sadder news — that Reg Starnes had died at the age of 73.

The club has lost one of its most devoted servants and a direct link with its early history. Mr Starnes' wife, Gwen, was the grand-daughter of one of the original share-holders when Rangers was incorporated at a meeting at St. Jude's Institute, Queens Park in 1885. Mr and Mrs Starnes were joint founders of the QPR Development Association which achieved the crucial purchase of the Loftus Road ground freehold in 1947. As a partial reward for his work in this connection, Reg Starnes was appointed a Director in 1948 and served us in this capacity for 33 years — a QPR record.

At the time of his death, Mr Starnes had been appointed our President Elect and this seems a fitting tribute to one of the club's hardest-working supporters and one of its best friends. We shall all miss him a great deal.



The late Reg Starnes and his wife Gwen.

FOOTBALL LEAGUE DIVISION TWO FIXTURES 1981/82

Date	Opponents	Date	Opponents
1981		1982	
Sat Aug. 29	Wrexham (3.00 pm)	Sat Jan. 2	FA Cup 3
Tues Sept. 1	LUTON TOWN (7.30 pm)	Sat Jan. 9	Luton Town (3.00 pm)
Sat Sept. 5	NEWCASTLE UNITED (3.00 pm)	Wed Jan. 13	League Cup 5
Sat Sept. 12	Grimsby Town (3.00 pm)	Sat Jan. 16	WREXHAM (3.00 pm)
Wed Sept. 16	League Cup 1 (2L)	Sat Jan. 23	FA Cup 4
Sat Sept. 19	CRYSTAL PALACE (3.00 pm)	Sat Jan. 30	Crystal Palace (3.00 pm)
Tues Sept. 22	Oldham Athletic (7.30 pm)	Wed Feb. 3	League Cup SF 1
Sat Sept. 26	Derby County (3.00 pm)	Sat Feb. 6	GRIMSBY TOWN (3.00 pm)
Sat Oct. 3	BLACKBURN ROVERS (3.00 pm)	Wed Feb. 10	League Cup SF 2
Wed Oct. 7	League Cup 2 (1L)	Sat Feb. 13	Blackburn Rovers (3.00 pm)
Sat Oct. 10	NORWICH CITY (3.00 pm)	Sat Feb. 20	DERBY COUNTY (3.00 pm)
Sun Oct. 18	Orient (11.30 am)	Sat Feb. 27	Norwich City (3.00 pm)
Sat Oct. 24	LEICESTER CITY (3.00 pm)	Sat March 6	ORIENT (3.00 pm)
Wed Oct. 28	League Cup 2 (2L)	Sat March 13	Leicester City (LCF) (3.00 pm)
Sat Oct. 31	Charlton Athletic (3.00 pm)	Sat March 20	CHARLTON ATHLETIC (3.00 pm)
Sat Nov. 7	ROTHERHAM UNITED (3.00 pm)	Sat March 27	Rotherham United (3.00 pm)
Sat Nov. 14	Sheffield Wednesday (3.00 pm)	Sat April 3	SHEFFIELD WEDNESDAY (3.00 pm)
Sat Nov. 21	Shrewsbury Town (3.00 pm)	Sat April 10	Chelsea (3.00 pm)
Tues Nov. 24	OLDHAM ATHLETIC (7.30 pm)	Mon April 12	WATFORD
Sat Nov. 28	CARDIFF CITY (3.00 pm)	Sat April 17	SHREWSBURY TOWN (3.00 pm)
Tues Dec. 2	League Cup 4	Sat April 24	Cardiff City (3.00 pm)
Sat Dec. 5	Bolton Wanderers (3.00 pm)	Sat May 1	BOLTON WANDERERS (3.00 pm)
Sat Dec. 12	BARNSELY (3.00 pm)	Wed May 5	Newcastle United (7.30 pm)
Sat Dec. 19	Cambridge United (3.00 pm)	Sat May 8	Barnsley (3.00 pm)
Sat Dec. 26	CHELSEA	Sat May 15	CAMBRIDGE UNITED (3.00 pm)
Mon Dec. 28	Watford	Sat May 22	FA Cup Final

FOOTBALL COMBINATION FIXTURES 1981/82

Date	Opponents	Date	Opponents
1981		1982	
Sat Aug. 29	CRYSTAL PALACE (3.00 pm)	Tues Dec. 22	Southampton (7.30 pm)
Tues Sept. 1	Swindon Town (2.00 pm)	Sat Jan. 9	FULHAM (3.00 pm)
Tues Sept. 8	Watford (2.30 pm)	Sat Jan. 16	Crystal Palace (3.00 pm)
Sat Sept. 12	IPSWICH TOWN (3.00 pm)	Sat Jan. 30	LUTON TOWN (3.00 pm)
Sat Sept. 19	Luton Town (3.00 pm)	Sat Feb. 6	Ipswich Town (3.00 pm)
Tues Sept. 22	Fulham (2.15 pm)	Sat Feb. 13	PLYMOUTH ARGYLE (3.00 pm)
Sat Sept. 26	ARSENAL (3.00 pm)	Sat Feb. 20	Arsenal (3.00 pm)
Tues Sept. 29	WEST HAM UNITED (2.30 pm)	Sat Feb. 27	ORIENT (3.00 pm)
Sat Oct. 3	Plymouth Argyle (3.00 pm)	Tues March 2	Birmingham City (7.00 pm)
Tues Oct. 13	Orient (2.00 pm)	Sat March 13	OXFORD UNITED (3.00 pm)
Sat Oct. 17	BIRMINGHAM (3.00 pm)	Sat March 20	Leicester City (3.00 pm)
Sat Oct. 24	Oxford (3.00 pm)	Tues March 23	CHELSEA (2.30 pm)
Sat Oct. 31	LEICESTER CITY (3.00 pm)	Sat April 3	Bristol City (3.00 pm)
Tues Nov. 3	Chelsea (2.15 pm)	Tues April 6	SOUTHAMPTON (2.30 pm)
Sat Nov. 14	BRISTOL CITY (3.00 pm)	Wed April 14	Watford (7.30 pm)
Sat Nov. 21	READING (3.00 pm)	Wed April 21	Reading (7.30 pm)
Tues Nov. 24	West Ham United (7.30 pm)	Sat April 24	NORWICH (3.00 pm)
Sat Nov. 28	Norwich City (3.00 pm)	Wed April 28	Hereford United (6.30 pm)
Tues Dec. 8	HEREFORD UNITED (2.30 pm)	Tues May 4	SWINDON TOWN (2.30 pm)
Sat Dec. 12	Bristol Rovers (3.00 pm)	Sat May 8	BRISTOL ROVERS (3.00 pm)
Sat Dec. 19	TOTTENHAM HOTSPUR (3.00 pm)	Sat May 15	Tottenham Hotspur (3.00 pm)

SOUTH EASTERN COUNTIES FIXTURES 1981/82

Date	Opponents	Date	Opponents
1981		1982	
Sat Aug. 29	Gillingham (11.00 am)	Sat Dec. 19	Fulham (11.00 am)
Tues Sept. 5	Ipswich Town (11.00 am)	Sat Jan. 2	GILLINGHAM (11.00 am)
Sat Sept. 12	Millwall (11.00 am)	Sat Jan. 9	IPSWICH (11.00 am)
Sat Sept. 19	Norwich (11.00 am)	Sat Jan. 16	MILLWALL (11.00 am)
Sat Sept. 26	Ipswich 1st Round League Cup (11.00 am)	Sat Jan. 23	NORWICH (11.00 am)
Sat Oct. 3	ORIENT (11.00 am)	Sat Jan. 30	Orient (11.00 am)
Sat Oct. 10	Portsmouth (11.00 am)	Sat Feb. 6	PORTSMOUTH (11.00 am)
Sat Oct. 17	WEST HAM (11.00 am)	Sat Feb. 13	WEST HAM (11.00 am)
Sat Oct. 24	CHELSEA (11.00 am)	Sat Feb. 27	Tottenham Hotspur (11.00 am)
Sat Oct. 31	TOTTENHAM HOTSPUR (11.00 am)	Sat March 6	Watford (11.00 am)
Sat Nov. 7	WATFORD (11.00 am)	Sat March 13	ARSENAL (11.00 am)
Sat Nov. 21	Arsenal (11.00 am)	Sat March 20	Charlton (11.00 am)
Sat Nov. 28	CHARLTON (11.00 am)	Sat April 3	Crystal Palace (11.00 am)
Sat Dec. 5	Chelsea (11.00 am)	Sat April 10	SOUTHEND (11.00 am)
Sat Dec. 12	CRYSTAL PALACE (11.00 am)	Sat April 24	Southend (11.30 am)

RESULTS DESK ... RESULTS DESK ... RESULTS DESK ... RESULTS DESK ...

FINAL FOOTBALL LEAGUE DIVISION 2

HOME						AWAY						
P	W	D	L	F	A		W	D	L	F	A	Pts.
42	19	1	1	53	12	West Ham	9	9	3	26	17	66
42	10	8	3	26	15	Notts. County	8	9	4	23	23	53
42	12	5	4	39	19	Swansea	6	9	6	25	25	50
42	12	8	1	28	7	Blackburn	4	10	7	14	22	50
42	10	6	5	35	23	Luton	8	6	7	26	23	48
42	9	8	4	34	26	Derby	6	7	8	23	26	45
42	10	8	3	21	10	Grimsby	5	7	9	23	32	45
42	11	7	3	36	12	QUEENS PARK RANGERS	4	6	11	20	34	43
42	13	5	3	34	18	Watford	3	6	12	16	27	43
42	14	4	3	38	14	Sheffield Wednesday	3	4	14	15	37	42
42	11	7	3	22	13	Newcastle	3	7	11	8	32	42
42	8	6	7	27	15	Chelsea	6	6	9	19	26	40
42	13	1	7	36	23	Cambridge United	4	5	12	17	42	40
42	9	7	5	33	22	Shrewsbury	2	10	9	13	25	39
42	7	9	5	19	16	Oldham	5	6	10	20	32	39
42	5	8	8	22	24	Wrexham	7	6	8	21	21	38
42	9	8	4	34	20	Orient	4	4	13	18	36	38
42	10	5	6	40	27	Bolton	4	5	12	21	39	38
42	7	7	7	23	24	Cardiff	5	5	11	21	36	36
42	8	7	6	28	26	Preston	3	7	11	13	36	36
42	6	10	5	19	15	Bristol City	1	6	14	10	36	30
42	4	9	8	21	24	Bristol Rovers	1	4	16	13	41	21

THE FOOTBALL COMBINATION

	P	W	D	L	F	A	Pts
Southampton	42	27	7	8	100	45	61
Tottenham Hotspur	42	22	13	7	99	56	57
Norwich City	42	23	10	9	77	43	56
Ipswich Town	42	19	16	7	66	38	54
Plymouth Argyle	42	21	12	9	73	54	54
Arsenal	42	20	13	9	68	48	53
Birmingham City	42	18	14	10	60	41	50
Chelsea	42	21	7	14	80	58	49
Queens Park Rangers	42	19	9	14	80	64	47
Leicester City	42	18	9	15	71	58	45
Crystal Palace	42	18	9	15	74	64	45
Luton Town	42	17	10	15	63	55	44
West Ham United	42	15	10	17	81	63	40
Bristol Rovers	42	11	12	19	45	63	34
Fulham	42	10	14	18	33	64	34
Oxford United	42	11	9	22	47	81	31
Bristol City	42	12	6	24	37	65	30
Orient	42	11	8	23	48	78	30
Reading	42	12	6	24	50	87	30
Hereford United	42	8	12	22	41	91	28
Swindon Town	42	11	4	27	44	91	26
Cardiff City	42	6	12	24	39	69	24

SOUTH EAST COUNTIES LEAGUE

	P	W	D	L	F	A	Pts
Tottenham Hotspur	30	23	3	4	96	40	49
Watford	30	18	7	5	62	41	43
Arsenal	30	15	7	8	49	35	37
Ipswich Town	30	14	8	8	55	34	36
Charlton Athletic	30	14	7	9	45	38	35
Queens Park Rangers	30	13	8	9	47	46	34
Norwich City	30	13	6	11	44	40	32
West Ham United	30	13	5	12	59	44	31
Chelsea	30	11	7	12	38	39	29
Gillingham	30	10	6	14	31	42	24
Millwall	30	7	10	13	35	51	24
Fulham	30	8	7	15	39	51	23
Orient	30	9	4	17	41	61	22
Crystal Palace	30	7	7	16	30	52	19
Portsmouth	30	10	1	19	44	65	18
Southend United	30	5	7	18	32	68	17

FINAL 1980/81 & PRE-SEASON TOUR RESULTS

FOOTBALL LEAGUE DIVISION TWO

v WEST HAM UTD (21 April 1981) 0—3
Burridge, Neill, Gillard, Fenwick, Wicks, Roeder, Waddock, Francis, Flanagan, Currie, Sealy.

v CAMBRIDGE UTD (25 April 1981) 5—0
Burridge, Fenwick, Gillard, Waddock, Howe, Roeder, Sealy, Francis, Flanagan, Currie, Muir. Scorers: Sealy (2), Muir (2), Roeder (1).

v SHREWSBURY TOWN (2 May 1981) 3—3
Hucker, Fenwick, Gillard, Wilkins, Howe, Roeder, Currie, Waddock, Flanagan, Muir, Sealy. Scorers: Fenwick, Waddock, Flanagan.

PRE-SEASON TOUR SWEDEN

v STUGENS BK (25 July 1981) 6—0
Scorers: Stainrod (2), King (2), Burridge (1), Sealy (1)

v SANDVIKS IK (27 July 1981) 8—1
Scorers: Stainrod (1), Micklewaite (2), Waddock (1), Sealy (2), Flanagan (1), Muir (1)

v SPANGA IS (29 July 1981) 1—0
Scorer: Micklewaite (1)

v ENKOPINGS (30 July 1981) 9—1
Scorers: Flanagan (3), Stainrod (2), Allen (2), Muir (1), Micklewaite (1)

v LUDVIKA BK (2 August 1981) 4—1
Scorers: Stainrod (2), Flanagan (1), Gregory (1)

PRE-SEASON TOUR IRELAND

v ATHLONE TOWN (16 August 1981) 4—3
Scorers: Stainrod (3), Flanagan (1)

v BOHEMIANS F.C. (18 August 1981) 3—0
Scorers: Stainrod (2), Allen (1)

Q.P.R. POOLS

JOIN A WINNING TEAM AGAIN
THIS SEASON

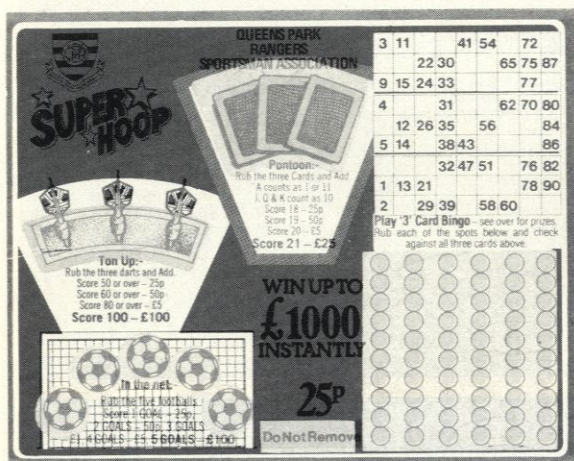
NEW STAND, NEW PITCH,

★NEW TICKET★

★
SUPER
★
HOOP

£4,000 A WEEK

★ CAN BE WON WITH THE NEW QPR BINGO TICKET



Society — Queens Park Rangers Sportsman Association, Pools Office, South Africa Road, London W12

Promoter — Tony Ingham

Last Date of Sale — June 13th 1981 and weekly thereafter.

Close Season
£1000 Winners —

ROBERTO BLANDIN
46 Alexandra Place
NW8

MRS J. BROWN
14 The Crescent
East Acton W3

MRS G. ROUGH
176 Creffield Road
W3

MRS M. McLOUGHLIN
104 Elthorne Park Road
W7

MRS BEARD
7 Modern House
Marylebone NW1

MRS L. KINGSBURY
20 Buckingham Avenue
Feltham, Middlesex

**AGENTS
REQUIRED**



IF YOU ARE A SUPPORTER — BECOME AN AGENT

Help us to complete our plans to raise money to fulfil Ranger's ambitions to make our Stadium one of the finest in the country. Contact the Pools Office; South Africa Road, or ring 749-1890 for details of benefits you will receive by helping your Club.

**SUPPORTERS
CLUB**

AWAY TRAVEL

**COME ABOARD THE
"SUPERHOOP" SPECIAL**

TO GRIMSBY, SEPTEMBER 12th. 1981

Depart Kings Cross	10.30 a.m.
Arrive New Cleve (for Grimsby F.C.)	14.15 p.m.
Depart New Cleve	17.16 p.m.
Arrive Kings Cross	20.50 p.m.
Fare £7.00	Match Tickets will be available.

Supporters Club Cards and Save Away cards must be produced when booking and carried on all Supporters Club Transport.

LUTON TOWN

*Our apologies as we have been
unable to obtain a team
photograph of our visitors.
Here instead are some
individual shots of some of
Luton Town's Star Players.*





LUTON TOWN

Manager: **TERRY VENABLES**

Colours: Blue and White Hoops, White Shorts

Manager: **DAVID PLEAT**

Colours: Orange Shirts, Navy Blue Shorts, Orange Socks.

JOHN BURRIDGE

John was signed from Crystal Palace for £250,000 last season. Once with Workington, he joined Blackpool for £10,000 in 1971 and Villa paid £100,000 for him in 1975. He played in the 1977 League Cup final, then joined Palace.

JOHN GREGORY

After four seasons as a Northampton first-teamer, John moved to Aston Villa in 1977. Brighton invested £250,000 in his transfer two years later and Rangers signed him this summer for £300,000.

TERRY FENWICK

Terry was signed from Crystal Palace for £100,000 last season. He made his Palace bow in 1978 and, following England youth honours, he was capped five times at under-21 level last season.

GLENN ROEDER

Glenn established himself as a League player with Orient and was capped for the England "B" side on their 1978 summer tour. It was upon his return that he signed for Rangers for £250,000.

BOB HAZELL

Bob played for the England under-21s during his Wolves' days and was transferred to Rangers for £240,000 in 1979. Though a defender, he was used as an experimental striker for a while last season.

GARY WADDOCK

Gary made rapid progress after making his League bow for Rangers at the age of 17 in September 1979. Before the season was over he was an Eire international and he now has three caps.

TONY CURRIE

Capped 17 times by England, Tony opened his career with Watford. He later served Sheffield United and Leeds before joining us for £400,000 in 1979.

GERRY FRANCIS

Former England captain Gerry rejoined Rangers last season in a £150,000 deal with Crystal Palace. He had joined Palace just over a year earlier for £465,000. Gerry has 12 England caps.

MIKE FLANAGAN

Though Mike gained England youth honours, Tottenham freed him and his first professional club was Charlton. Three times top scorer, he joined Palace for £815,000 in 1979 and Rangers for £150,000 a year later. An England "B" cap.

SIMON STAINROD

Simon made 67 League appearances for Sheffield United but really made his name after joining Oldham in 1979. Top scorer two seasons ago, he moved to Rangers last season for £275,000.

CLIVE ALLEN

A remarkable year ended for Clive when he returned to Rangers this summer. He left here for Arsenal a year ago but, without playing for them, he was signed by Palace. The two deals cost £2,500,000!

1

2

3

4

5

6

7

8

9

10

11

12

JAKE FINDLAY

Luton's highest-ever fee for a goalkeeper — £100,000 — changed hands when Scots-born Findlay was brought out of the shadows at Villa Park to be given the chance to prove that he is capable of winning international honours.

KIRK STEPHENS

Inside information in the hard world of non-league football enabled Luton manager David Pleat to snap up a young prospect who has since become the envy of several First Division clubs.

MARK AIZLEWOOD

Luton nipped in smartly with a £50,000 cheque to bring Welsh under-21 defender Aizlewood out of the Fourth Division.

BRIAN HORTON

Versatile mid-fielder Brian was transferred from Brighton and is Luton's new captain. He scored all 30 goals while at the south coast club.

MIKE SAXBY

Luton's record fee of £200,000 persuaded Mansfield to part with their star centre-half in the summer of 1979.

MAL DONAGHTY

This 20 year-old player from Larne in Northern Ireland has made such good progress at Luton that he became a Northern Ireland international last summer.

RICKY HILL

West Ham, famous for liking players of skill and flair, had their eye on schoolboy Hill in North London when he was still only 14.

BRIAN STEIN

Signed from non-league Edgeware Town in 1977. His sharpness in the box and quick ball control has made him a regular ever since.

STEVE WHITE

Steve made a name for himself as a goal-scorer at Bristol Rovers, in fact, scoring twice for the Rovers against Luton before being transferred to Kenilworth Road for £175,000.

RADOMIR ANTIC

Luton's first excursion into the European transfer market brought Antic — pronounced Anteesh — to this country with five Yugoslav international caps to his name.

GODFREY INGRAM

A former England schoolboy international, Ingram developed in Luton's schoolboy and reserve teams, and is a youngster of immense promise.

Referee

ALAN ROBINSON Portsmouth



Linesmen

C. GRADY

D.J. SIMMONS



RESULTS



LUTON TOWN

SCORERS



LUTON TOWN