

# THE HATTER

OFFICIAL MATCH DAY MAGAZINE  
PRICE 30p



## INSIDE TODAY:

Davids Diary . . . . . page 5

Today's opponents . page 13

Junior Hatters . . . page 8 & 9

John's Journal . . . . . page 7

Hatters Chatter . . . . . page 4



FOOTBALL LEAGUE DIVISION TWO  
Saturday 11th April 1981  
Kick-off 3.00 p.m.

**LUTON TOWN v  
QUEENS PARK RANGERS**

TODAY'S MATCH SPONSOR:  
**ARGOS  
CATALOGUE  
SHOWROOM**



70-72 Kenilworth Road, Luton  
Tel: 411622

Season 1980-81

*Chairman:*  
Denis Mortimer

*Directors:*  
R. L. Banks, D. J. Evans,  
E. S. Pearson, H. Richardson,  
R. J. Smith, J. R. Yates  
J. R. Smith (Chief Executive)  
D. J. Pleat (Team Manager)

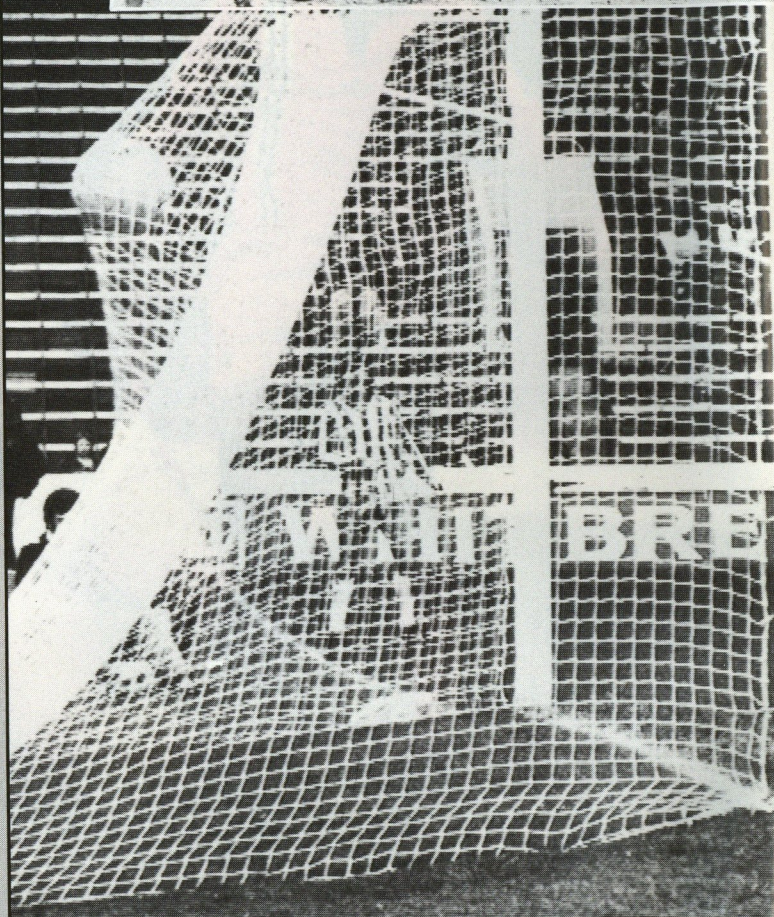
*President:*  
T. Hodgson

*Vice-Presidents:*  
J. A. C. Bain (Deputy President)  
Lord Hill, Sir Reginald Pearson OBE,  
A. J. Berry, J. B. Brent, B. Cole,  
B. England, N. S. Fookes, G. B. Holland,  
C. Holloway, I. E. Holmes,  
C. J. Hudson, R. Larkinson,  
L. Leppington,  
Eric Morecambe OBE, R. Safranek,  
E. Waller, R. Unwin

*Playing:*  
*Coaches:* David Coates,  
John Moore and  
Trevor Hartley  
*Physiotherapist:* John Sheridan  
*Doctor:* W. A. C. Berry MBBS

*Administration:*  
*Club Secretary:* John Wilkinson  
*Assistant Secretary:* Bill Butler  
*Project and*  
*Advertising Manager:* Mike Beevor  
*Commercial*  
*Manager:* Mike Hardwicke  
*Catering Manager:* Clive Hustwitt  
*Youth Development*  
*Officer:* Colin Ball  
*Solicitors:* Lathom and Co.  
*Auditors:* Josolyne, Layton,  
Bennett & Co.  
*Photographer:* Gareth Owen  
*Printers:* Hemmings & Capey  
(Leicester) Ltd.  
Telephone: (0533)  
768217

# A C T I O N . . A C T I O N



## SHEFFIELD WEDNESDAY 3 LUTON TOWN 1

On a day when the majority of the chasing pack in the promotion race to the First Division faltered by losing, we did our own hopes a power of damage by losing at Hillsborough. One goal 15 minutes from time by Godfrey Ingram was all we had to show throughout the game although the story could have been different if we had made the most of our chances.

*Main picture:* Wednesday's Ante Mirocevic's (out of picture) beats Jake Findlay for the first goal.

*(Inset):* Andy McCulloch challenges Findlay but, this time, Wednesday failed to score.

*Pictures:* Evening Post-Echo.



# A C T I O N . . A C T I O N

# BOX OFFICE . . . BOX OFFICE . . .

As we are still receiving letters complaining about the Wing Stand being made "unreserved", please let us repeat that this decision has already been reversed as stated in the Cambridge match programme and that this season's conditions apply for the reserved seats.

The Wing Stand seat price for a members ticket for an adult is therefore £35, the price for a juvenile, senior citizen or a full-time student is £20, the same for all other areas.

While writing about season tickets, please remember the current prices apply only until the 30th June after which ALL prices are raised by £5.

Remember, you can apply by post to renew your present seat or to purchase a standing ticket for next season. We certainly do appreciate postal applications because this enables us to handle these outside normal office hours which is of great assistance while working with a small staff because of holidays.

Seat tickets for the Bristol Rovers and Oldham games are now on sale price £3 each.

We are still opening the ticket office for half an hour after each first team home game for the sale of match tickets and members tickets.

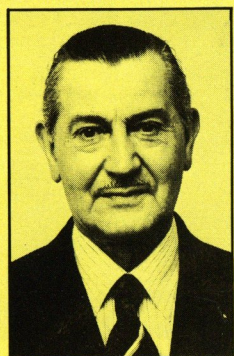
We have tickets available at £4.25 and £3.50 for the away game at Chelsea on Easter Monday and we have ordered tickets for the away games at Bolton on Saturday 2nd May. At the time of going to press, we still do not know the date for the re-arranged game against Swansea City.

Our last two Football Combination games are on the 21st April against Reading (7.30 p.m.), and on the 28th April against QPR (7.30 p.m.).

Finally we would like to express our appreciation for the hard work done by our assistant Margaret Duffy who left us recently to return to Eire to live.

# BEHIND THE SCENES

George Barratt is a name which, apart from the staff, we think no-one has heard of. But, to us, he is a very important cog in the wheel.



George makes the best cup of tea this side of Cad-dington as the players, their guests and Century Club members will verify.

He has been with us since the Forties and has still yet to see a full 90 minutes of football. He says that, by the time he gets things ready and then washed up, the match is over. Keep the kettle on George, we will be down in a minute!

# BUILDING OUR RELATIONSHIPS

Barratts the builders generously sponsored our last home game against Cambridge United and took the opportunity of entertaining some of the company's important business contacts. Our manager David Pleat took a few minutes off his pre-match preparations to talk to the Barratt party and also to present a coloured picture of the Town to one of the firm's executives.



# A PAT ON THE BACK

We always strive to provide you with a good read with your match day magazine and we are delighted to learn that we have been placed in second position for the most improved programme in the 1980-81 National Programme Awards.

We have already started negotiations with our printers and designers for the production of next season's match day magazine. But we are always willing to listen to constructive suggestions from supporters who may like to see a new item included. Suggestions should be sent to: The programme editor, Luton Town FC, Kenilworth Road, Luton.

On the subject of programmes, we have been asked by the Football Programme Directory to remind fans of the seventh international programme fair to be held at the Connaught Rooms, Great Queen Street, London WC2 on 13th June.

Admission on the day is 50p but advance tickets, priced at only 25p, are available from 66 Southend Road, Wickford, Essex. Please enclose a SAE.

# A SPECIAL VISITOR

We welcome a special visitor from Norway to the match this afternoon. Erik Grefberg is a long standing friend of manager David Pleat and follows the Town's progress closely from Scandinavia where English football is tremendously popular. When we beat West Ham at Upton Park on the first day of the season, Erik and his mother won the pools. Let's hope Erik will see a Luton victory this afternoon.

# DAVID'S DIARY

There can be no doubt that the last three games have been disappointing for all of us at Kenilworth Road. Two points out of six at a time when all the others involved in the promotion race are faltering suggests that we, also, are not good enough to take the bull by the horns and race ahead. Against Cambridge we came up against brickwall tactics and failed to score although we dominated the play and forced 15 corners. The overall display showed much determination and we all felt we should have edged the game by a couple of goals. At Wrexham, we settled down into the second period and, once again, might have won the game. I felt that Raddy Antic was particularly unfortunate not to be a winner having two spectacular 25 yarders almost break the crossbar. Sheffield was tough and competitive and the early injury to Ricky Hill didn't help our cause and then Curran hit two opportunist goals for which he should take full credit. We had our chances which we failed to take but our overall play lacked the conviction of a side convinced they are going into the First Division.

Today's game has exciting possibilities and I hope we can bounce back with the style which has won us respect in the last two seasons. QPR have many good players including three with Luton connections — Don Shanks, Andy King and, for the briefest of spells, Barry Silkman. Both sides need to win and it should make for an entertaining game. I would like to remind supporters that Paul Price, who has started his Welsh international career in amazing style (winning every game he has played in) is having his testimonial year next season.

There are many events which you will be able to support. As club captian, he has shown sound responsibility.

Tomorrow, we make the trip to Malmo, Sweden, for a friendly game. We were invited to Sweden to provide stiff opposition for the Swedish champions who played in the European Cup Final only two seasons ago.

I congratulate the reserves for bouncing back after three defeats to beat Oxford United 4-2 last weekend. Michael Small, who was loaned to Hitchin Town earlier this season, scored two goals and we have high hopes that his experience in the Berger Isthmian League will help his progress.

Clive Goodyear is back in action after a ligament injury. Two young players, Ray Brammer and Andy Beasley have been invited to attend an England youth training session this week.

Stacy North, Mitchell Thomas and Ray Daniel have appeared in the reserve side and it is much to the credit of temporary displaced first team players Alan West and Lilly Fuccillo who have eased the youngsters through this standard of football. There is great value in having one or two experienced players in the reserves to help the youngster's progress.

Get behind the team today. I am told we still have an eight or nine to one chance of third place. If there is a back door to get out of the Second Division, we must do our best to walk through it.



# J F MEADE LTD

CIVIL ENGINEERING  
BUILDING CONTRACTORS  
PLANT HIRE

14 TENNYSON ROAD  
LUTON, BEDS

Telephone:  
0532 28740/414759

MOPEDS



MOPEDS

Get there Italian Style.

Available at:  
**RGM MOTOR CYCLES**  
**50 HASTINGS STREET**  
**LUTON**

Telephone: 29360

## JUNIOR HATTERS QUIZ

Sponsored by:



ANGLIA  
TELEVISION  
and  
ADIDAS

Question:

In the past Luton Town have had many players who have represented their country whilst playing for Luton.

List ten of them on a postcard and send to:

Colin Bell  
Youth Development Officer  
Kenilworth Road, Luton

First correct entry receives a Luton Town  
replica shirt supplied by:  
**ADIDAS**

## TOWN CLASSIFIEDS

### ALUMINIUM WINDOWS

We make and install our own finest quality aluminium replacement windows, doors and patio doors. Competitive prices. Personal attention from your local firm:  
W. H. ALLSOP & SONS, 153 NEWTOWN STREET, LUTON.  
Tel: Luton 20011 or evenings 424650/23472.

★ ★ ★

### RUBBER STAMPS

and marking equipment, also general printers. For a prompt personal service contact: **Mount Tape Limited, Heathfield Works, Leyton Road, Harpenden, Herts.** Tel: 64431/2/3 (24 hour service on 64431).

★ ★ ★

### PRINTING

HEMMINGS & CAPEY (LEICESTER) LTD. Your match day magazine printers.

★ ★ ★

### PERSONAL

DOYLE. Here's to the next 21 years — Bodie

GOOD LUCK to the Town from Ian, Tobias, John, Haydn, Lee, Richard, Stephen, Grant, Daniel, Stuart, Jason, Stuart, Evan, Anthony, Neil, Amit and Mr Barry, Robert Bloomfield Middle School, Shefford.

HAPPY 18th birthday Tracey from Mum, Dad, Dean, Sindy.

★ ★ ★

FOR SALE. Quantity of Kodak Super 8 cartridges Ektachrome 160 price £4.50 per cartridge or 20 for £80.00 contact C. Ball, Luton Town Football Club. Tel. 37079.

★ ★ ★

You can get your message in Town Classifieds for only 15p per word, £1 minimum payment. Send details with payments to Mike Beevor, Luton Town FC, Kenilworth Road, Luton.

# John's Journal

We welcome today the directors, managers, players and staff of our London near neighbours, Queens Park Rangers and also hope that, by the time these notes are read, the weather has taken a turn for the better.

Not that the English weather will bother Rangers next season. Recently they have announced that they intend to lay an artificial surface at Loftus Road at a cost of somewhere near £350,000 which, when you think of it, is the cost of one good player these days.

They are to be congratulated on their idea and, although some of us might not like it, the chances of getting matches postponed will certainly be decreased. I for one have not yet been won over with the idea for League football. I must emphasise that this is my own opinion and not Luton

Town's. I feel that it will take the competition out of the game; the bounce of the ball will be true which leads to lesser mistakes by players and less goals.

The FA Cup is played in January and usually on a very heavy pitch. Imagine a First Division club playing against a team from the Fourth Division and the pitch is very muddy. To me this gives the lower club a better chance, because as everyone knows, you cannot play the ball around so much in the mud, so the skilful player is brought down to a level of the lower side.

That is what makes the FA Cup and how you get the upsets. If the game is played on an artificial surface the result becomes predictable. Would Exeter have beaten Newcastle on an artificial surface irrespective of the venue?

I can remember many matches in the not too distant past where we always tried to get the visiting side to defend the heavy end (Oak Road) in the second half and I can still see Hugh Billington, George Stobbart, Alan Brown and Gordon Turner ploughing through the mud and going by the defence who could not turn because of the conditions.

In my opinion, this made for good crowd entertainment and I do not think we would see anything like it again, once an artificial surface has been laid. Anyway, as I said, this is purely my opinion and I would like to hear yours.



JOHN WILKINSON Secretary

## MEMBERS OF THE

## KENILWORTH SUITE

A. G. BERRY ESQ.  
BRENGREEN HOLDINGS LTD.  
61 CHEAPSIDE, LONDON EC2V 6AX  
TEL: 01-248 6026

BLUE ARROW STAFF BUREAU  
3 HOLYWELL HILL, ST. ALBANS,  
HERTS.  
TEL: ST. ALBANS 61373

B. COLE ESQ.  
CLEANDUSTRIAL SERVICES LTD.  
PALMERS GREEN, LONDON N13  
TEL: 01-882 4626

DRAPERS COACHES  
117B GARDENIA AVENUE, LUTON  
TEL: LUTON 597391

FILMERGRAPHIC ASSOCIATES  
PHOTOTYPESETTING AND PRINTING  
BAINSON HOUSE, ALTON ROAD  
LUTON  
TEL: LUTON 36407

FINE STAMPS LTD.  
BILTON WAY, LUTON  
TEL: LUTON 36761

MR. R. FITZPATRICK  
PRE HOTEL, REDBOURN ROAD,  
ST. ALBANS, HERTS AL3 6JZ

N. S. FOKES ESQ.  
N. S. FOKES, ENGINEERING  
SERVICES LTD.  
45 LATIMER ROAD, LUTON  
TEL: LUTON 26139

MR. E. FOUNTAIN  
VAUXHALL MOTORS, LUTON

S. GOLBY  
FREDK RAY LTD.  
STANBRIDGE ROAD  
LEIGHTON BUZZARD  
TEL: 372241

BRIAN E. HANDSCOMBE  
(LIFE AND PENSIONS BROKER)  
48 ALMA STREET  
LUTON LU1 2PL  
TEL: LUTON 425921/4

G. B. HOLLAND ESQ.  
G. B. HOLLAND & CO. LTD.  
MOTHERWELL WAY, LONDON ROAD  
WEST THURROCK, ESSEX

MR. I. E. HOLMES  
IVOR HOMES LTD.  
82-88 MARSH ROAD, LUTON  
TEL: LUTON 56622

C. J. HUDSON ESQ.  
E. W. HOLDINGS LTD.  
6 UNION ST. LUTON  
TEL: LUTON 30511

RICHARD C. LARKINSON  
(BALDOCK) LTD.  
STATION WORKS, BALDOCK, HERTS.  
TEL: BALDOCK 893158

P. LAYCOCK  
LUTON SPORTS PRESS  
HAZELBURY CRESCENT, LUTON  
TEL: LUTON 28757

MARK JAMES (SALVAGE) LTD.  
16 WEST STREET, DUNSTABLE  
TEL: DUNSTABLE 605944

DR. & MRS. G. L. PLESTER  
9 BRIARS CLOSE, NUNEATON  
WARWICKSHIRE

A. HUNTER ESQ.  
RAVENMERE LTD. ALLRIC HOUSE  
21 FARLEY HILL, LUTON  
TEL: LUTON 32640

RICHMOND ELECTRONICS  
(MARKYATE) LTD.  
HICKS ROAD, MARKYATE, HERTS.  
TEL: LUTON 840761

ROBINSON METAL (LUTON) LTD.  
CALEB CLOSE  
464 DUNSTABLE ROAD, LUTON  
TEL: LUTON 53866

R. S. SAFRANEK ESQ.  
NEAHURST LTD. LONDON RD.  
LOWER STONDON, HITCHIN  
TEL: HITCHIN 94-813545

TRICENTRAL CARS (LUTON) LTD.  
326-340 DUNSTABLE ROAD, LUTON  
TEL: LUTON 31133

T. & H. TYRE SERVICES LTD.  
MANOR ROAD, LUTON  
TEL: LUTON 27665

R. W. UNWIN ESQ.  
R. W. UNWIN & CO. LTD.  
PROSPECT PLACE, WELWYN HERTS.  
TEL: WELWYN 6441

WALLSPAN BEDROOMS  
INDUSTRIAL ESTATE  
MAULDEN ROAD, FLITWICK, BEDS.  
TEL: FLITWICK 3621

# JUNIOR HATTERS



Thanks to Colin Walker, supporting friends and Junior Hatters who took part in our mini talent contest at our last meeting. In fact, thanks to all who helped to make it another success.

Since my column in the Bristol City match day magazine, I hope you have been reading the new Junior Hatters column in the *Evening Post-Echo* every Tuesday. The column gives me a chance to keep you right up to date, and I am especially pleased to have the chance again to remember members birthdays as they occur.

Next season, I want to remember every Junior Hatters birthday by inviting them to be guests of the Junior Hatters Club on the home match day nearest their birthday. More about this soon.

This is an idea I picked up by visiting other clubs, and I feel will prove to be attractive to Junior Hatters.

Talking about ideas, I would like to hear from any Junior Hatter or parents, of any ideas you may have to put in our "think-tank". Who knows, your idea could be just what we need to help our Junior Hatters Club to be even more successful.

Don't forget, if you have a friend who is not a Junior Hatter, encourage them to join and help swell our ranks. I shall soon be able to announce the name of our 1,000th member and hopefully the Junior Hatter who introduced him or her. So look out in this or the Junior Hatters column in the *Evening Post-Echo* every Tuesday.

Now for some good news, at least for 15 Junior Hatters. The following members handed in all-correct solutions to our quiz at the recent Junior Hatters meeting, and will receive a prize each today on the pitch before the game. They are: Neil Wilkinson, 9 Wickmere Close, Warden Hill, Luton (10); Ian Browne, 4 Beverley Road, Luton (11); Chris Campbell, 9 Burnt Close, Luton (10);



There was a little bonus for David Gilder of Sutton Road, St. Albans, before our last home game against Cambridge United. He was the junior quiz winner at the Bristol City game and received his prize — an Adidas Luton Town shirt — from advertising manager Mike Beevor.

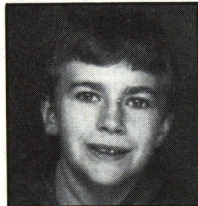
Ronan Dowd, 107 Thrales Close, Marsh Farm, Luton (10); Michael Campbell, 9 Burnt Close, Marsh Farm, Luton (11); Paul Meade, 68 Truro Gardens, Luton (10); Paul Brandreth, 10 The Close, Harpenden (13); Dean Billington, 17 Woodgreen Road, Luton (11);

Peter Galvin, 381 Hitchin Road, Luton (12); Paul Reader, 12 Vale Close, Harpenden (12); Ian Saunders, 2 Kinsbourne Close, Harpenden (14); Jason Searle, 596 Dunstable Road, Luton (11); Lee Brown, 6 Little Berries, Marsh Farm, Luton (11); Allen Baxter, 141 Bradley Road, Luton (14); Steven Bingham, 35 Thornhill Road, Luton (11).

Also, good news for Michelle Capp, (8081889) of Elm Grove, Woburn Sands, Milton Keynes, the winner of our latest Junior Hatters scoreboard quiz. Again she was one of several all-correct solutions sent in but her entry was the first received. Her answers were: 1. Billy Bingham; 2. Malcolm Macdonald, Allan Brown, David Pleat, David Sexton; 3. Fulham, Blackpool, Luton, Manchester United; 4. Norwich, Ipswich, Luton, Cambridge, Colchester, Southend, Peterborough, Northampton.

COLIN BALL Youth Development Officer

## THIS AFTERNOON'S MASCOT



Today's mascot is 11-year-old Colin Kruse, of Wheatlock Meade, Redbourn. Colin is a pupil at Redbourn Junior School and plays football for their team in addition to the Redbourn Under-11 side. He likes making models and is a supporter of the Harpenden Drum Corps. His favourite Luton player is David Moss. We hope you enjoy your afternoon, Colin.

## WHICH SIDE WAS HE ON?

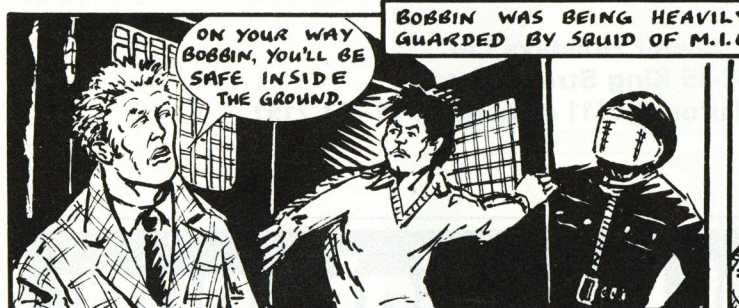
EPISODE TWENTY-ONE by Ray Aspden

THE STORY SO FAR...

YOUNG "BOBBIN" DINO, LEATOWN'S FOREIGN SIGNING HAS HAD HIS LIFE THREATENED BY VORGE, A TERRORIST. M.I.6 ADVISE THAT "BOBBIN" GO INTO HIDING, BUT THE TEAM HAVE IMPORTANT FIXTURES AS THEIR SEASON REACHES ITS CLIMAX...



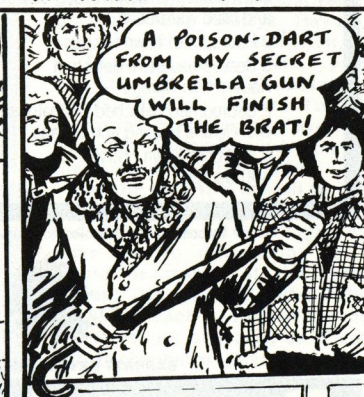
OUTSIDE THE GROUND A SECURITY VAN MADE SLOW PROGRESS THROUGH THE CROWD OF MATCH-GOERS.



ONCE THE MATCH WAS UNDERWAY, BOBBIN GOT INTO THE ACTION.



BOBBIN WAS RIGHT TO WORRY, FOR HE WAS ONLY MOMENTS AWAY FROM AN ATTEMPT ON HIS LIFE!



HIDDEN DANGER ON THE TOUCHLINE! DON'T MISS THE LIFE OR DEATH SHOT IN EPISODE TWENTY-TWO!



Your local tour operator . . .

## WORLD CUP SPECIAL

SWITZERLAND  
v  
ENGLAND

Depart 28th May — Return 31st May 1981  
Only £85 Inclusive of flight and Stand ticket

**Book Now**

**Silvair Holidays Ltd.**  
13-15 King Street, Luton  
Telephone: Luton 410111 or London 01-351 2191

## The right buy right now.

The 1% drop in interest rates, means cheaper mortgages, so now is the time to buy Barratt. Barratt not only give you the best home you can buy — but help you buy it. We can help with the deposit, help with the mortgage and we may even buy your present home. **So buy Barratt now — before prices rise again.**

### The Vikings, Flitwick

Tel: Margaret Field, Flitwick 5912

1 Bedroomed 'Mayfair Mews' showhouse with curtains and carpets and fitted wardrobes	£19,950
2 Bedroomed Town Houses	from £22,950
3 Bedroomed semi-detached Houses with Garage	from £25,450
2 Bedroomed detached Bungalows with Central Heating and Garage	from £29,950
2 Bedroom Town Houses with Garage	from £21,995

### Hillgrounds, Kempston

Tel: Thomas Odd, Bedford 853457 (24 hours)

2 Bedroom semi-detached Houses with Garage	from £22,495
2 Bedroom detached Bungalows with Central Heating and Garage	from £27,150
3 Bedroom detached Houses with Central Heating and Garage	from £34,300
3 Bedroom detached Bungalows with Central Heating and Garage	from £34,950
4 Bedroom detached Houses with Central Heating and Double Garage	from £39,750

Prices indicated subject to houses remaining unsold. Sales Offices and Showhouses open 7 days a week 11 am-6pm.



# Barratt

BARRATT DEVELOPMENTS (LUTON) LTD, P.O. Box 5, Luton, Beds. Tel: Luton 422771

## Barratt the right buy right now

# IDENTIKIT

## YOUR IDEAL FOOTBALLER

BY ROB HUGHES OF THE SUNDAY TIMES

THE FIGURE is intentionally blank, but if you've half an hour to spare and a good eye for the great talents, it's yours to fill in as you will. Think of it as an identikit outline into which you, as the creator, are invited to piece together the great talents you have seen.

Starting at the top, for example, you could give him the forehead of Tommy Lawton, who surely equals any player who ever lived in the power and timing of his heading. If you missed him, it's doubtful you will see the like today, but a selection of modern-day headers to put under your thinking cap would perhaps include Joe Royle, Andy Gray, Frank Stapleton, Paul Mariner, David Johnson, Bob Latchford and David Cross.

Next, the eyes. Again, a player from the past, Alfredo di Stefano, can have no equal in the ability to take in the pattern of play, to foresee moves and openings. Internationally, Poland's Kazimierz Deyna had something of that ability, Frans Beckenbauer and Wilfried van Moer could see with a "wider" vision, Liam Brady has it, and at Ipswich Arnold Muhren spots manouvres ahead of time.

The mouth? Johan Cruyff gets into trouble through it on the pitch, but few players have ever proved more influential in the art of verbal communication to lesser colleagues. In this country, we've seen Terry Yorath lead Wales by word of mouth, Frank McLintock had the gift... but particularly if you're a terrace fan you'll have your own ideas on the players who make others run.

Jack Charlton stood head and shoulders above others when it came to a long, flexible neck for getting up in crowded goalmouths, though a Swede Ralf Edstrom has fair leverage too.

Travelling down, perhaps through the shoulders of Big John Charles, we reach the heart of Billy Bremner, the battler Don Revie always said he'd choose first at his side in the trenches. Archie Gemmill came out of the same mould, little Brian Flynn rarely knows when he's beaten, and Alan Ball wasn't noted for conceding many battles.

The elbows, a useful tool for discouraging opponents, were never more destructively used than on Italy's canary-raising Romeo "Assasino" Benetti. Joe Jordan at one time looked a possible rival.

Frank Swift, with a span of 11½ inches, probably had the biggest pair of hands in the business, though today Pat Jennings and Bristol City's recent import Jan Moller, are scarcely endowed with midget palms.

The torso, from where real, solid balance can derive, would have to belong to Gerd Muller, West Germany's unique, squat and phenomenal record goalscorer. His successor today would come from Argentina, Diego Mara-

dona, whose short, cube-like figure is as sturdy a tank as, say, the bulk of Everton's Bob Latchford.

Pele, who could fit into so many characteristics, fills out the thighs in our identikit man. He could catch the ball on his thigh as if it were a hand; from there came the strength to fortify genius, the power for those salmon-like leaps. Look today, even at a relatively slim player like Trevor Francis, and you will be surprised at the awesome muscular build in the thighs, as you will in Kenny Dalglish, the hardest man to shake off the ball in Britain.

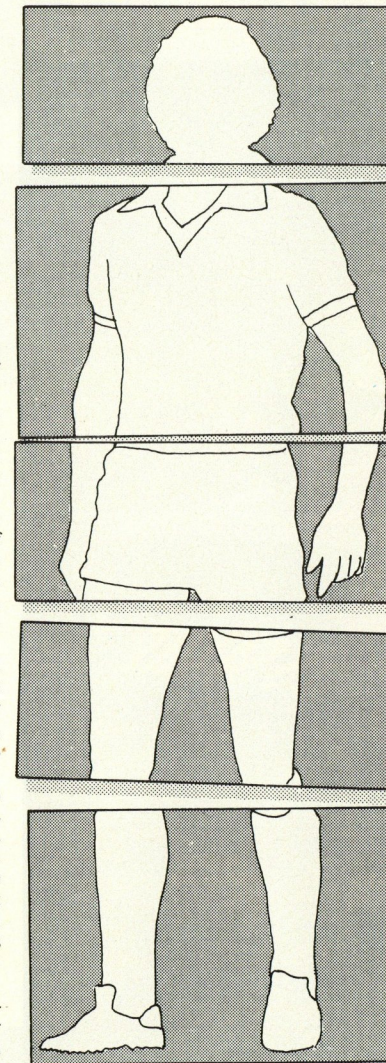
If Stanley Matthews from the past would be rivalled by European Footballer of the Year Karl-Heinz Rummenigge for the precision of his right foot, then Ferenc Puskas's almost infallible left was the supreme instrument ahead of Roberto Rivelino or Michel Platini who bend free-kicks like Uri Geller bends spoons or, from our league, Trevor Brooking, Tony Currie or Liam Brady created from midfield.

Finally, of the physical characteristics, we would endow our man with, the giant, loping stride of Gunter Netzer, longer it seemed than even John Charles or the Dutchman Wim van Hanegem.

But why stop at physical attributes? Speed, such as that of Trevor Francis, is the essence of modern play, and speed of thought as essential. And once we start looking internally at the brain-power that makes the complete player, the Eusebios and Beckenbauers, the Bests and Laws and Charltons, the Blanchflowers, Finneys, Haynes and Mannions crowd our attention.

Instincts, too: Pele, possibly supreme at turning fantasy into reality. Bobby Moore, for sheer, reassuring presence, or Dave Mackay for gusty leadership, were players of the spirit, as was John Giles.

In the end, it is as well the identikit is pure fiction, for the arguments and the choice between styles would drive you to distraction. Yet who would be master of the complete player? Di Stefano, Blanchflower, Cruyff...? Each controlled the moods and strategies of teams, as of course, did Beckenbauer. Many pros would point in the final analysis to Di Stefano, yet if heart as well as mind have a say in pointing to the player of longer-lasting impact on the mind's eye nothing and no-one blurs the memory of Pele.



Your ideal player?

WORLD LEADER



# Rothmans King Size



the best tobacco money can buy



MIDDLE TAR As defined in H.M. Government Tables.

H.M. Government Health Departments' WARNING:  
CIGARETTES CAN SERIOUSLY DAMAGE YOUR HEALTH

## IN FOCUS



Manager David Pleat and his players really appreciate our awayday support as groups of youngsters travel to opponents' grounds by train, coach and car. However, we can imagine the disappointment of this group who travelled to Swansea at the end of last month to find their entertainment completed at the station when they learned that heavy rain in South Wales forced the game to be postponed.

## HAVE YOU EVER TASTED TIGER?

Tiger Bitter is now at Luton Town Football Club.

Tiger from Everards. A cool and satisfying way to quench a thirst.

Next time you go to the bar, ask for a Tiger.

You won't know what you've been missing until you try it.

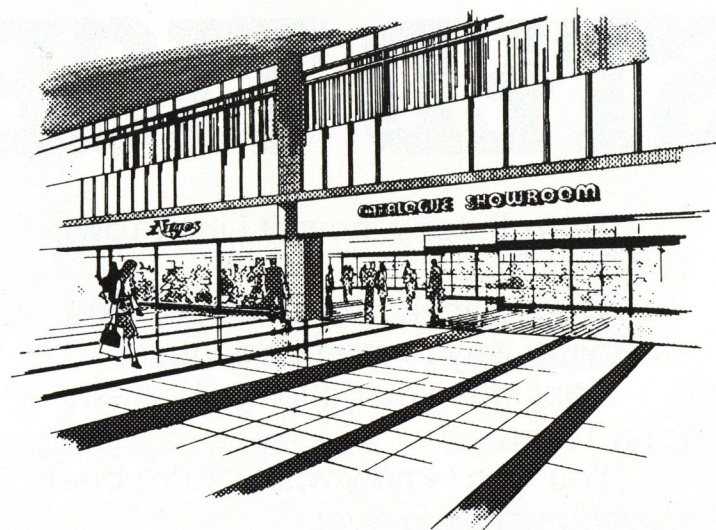


**EVERARDS FINE BEERS.**  
**Top of the thirst division.**

# Argos

## Your discount choice

For kitchenware, D.I.Y., gardening equipment, audio, photography, jewellery, gifts, sports goods, toys and electrical appliances.



Head Office: Argos Distributors Ltd., 112 Station Road, Edgware, Middx. HA8 7AQ.  
Stores throughout the UK

## WELCOME TO

# Q.P.R.

There's a strong Luton connection currently attached to QPR with former Hatter's players Don Shanks, Andy King and Barry Silkman all in regular action for the London club.

But they have been unable to help QPR mount the serious bid for promotion most people thought they would make at the start of the season.

Last season, they missed a place in Division One by only four points and, this term, made a poor start. It left manager Tommy Docherty without a job as the directors persuaded Terry Venables to move across London to replace him.

Venables obviously has the First Division in his sights. But it is going to take him a while to transform the team into a side capable of fighting their way out of the Second.

Venables is a former QPR player but, at Palace, he built a young side which won promotion to Division One. But his priorities are now with Rangers and Loftus Road supporters are now looking to him to regain the club's First Division status.

When Venables arrived at Rangers, there was money available following the sale of Clive Allen for over £1 million and Paul Goddard for about £900,000.

Allen's move to Arsenal from Rangers sparked one of the most curious and controversial incidents football has known. The youngster

won the tag of the first teenage million pound player when he left for Highbury but, within months, he was on the move again — this time to Crystal Palace after failing to play a competitive first team match for the Gunners.

Venables' first big deal was to persuade Crystal Palace's England mid-field player Gerry Francis to move to Rangers for £150,000 after Dario Gradi had taken the manager's job at Palace from Malcolm Allison. Francis, in fact, started his career with Rangers and made almost 300 appearances before moving across the capital to Palace.

Venables also turned to Palace to sign keeper John Burridge who has replaced former Nottingham Forest player Chris Woods. Burridge has seen service with Workington, Blackpool, Aston Villa and Southend before agreeing to sign for Palace.

It cost Rangers £250,000 for Woods — who was understudy to Peter Shilton at Forest.

Silkman arrived at Kenilworth Road on a month's loan from Plymouth in February 1979. He figured in a couple of first team games before his spell with Luton ended when manager David Pleat suspended him for two weeks for a "breach of club discipline".

The Town's fans will remember Andy King, who still lives in the area. King joined Luton from school and made 30

appearances, scoring nine goals, before Everton discovered his potential and took him to Goodison Park.

Shanks made 89 appearances in the Town's colours before joining Rangers where, before this season, he clocked up 138 first team games.

Central defender Steve Wicks cost the Londoners £350,000 from Derby County. It was £25,000 more than his first transfer fee when he moved from Chelsea.

England "B" international Glen Roeder was another expensive signing at £250,000 from Orient. Ian Gillard is another Rangers player with international recognition. He won England honours on four occasions and is the club's longest serving player with well over 300 appearances to his credit.

Rangers paid a club record £400,000 to Leeds United to sign yet another player with England honours — Tony Currie. Formerly with Watford and Sheffield United, Currie's experience should be a great asset to Rangers.

*Back row (left to right):* Ken Shellito, Glenn Roeder, Steve Wicks, Bob Hazell, Peter Hucker, Chris Woods (on loan to Norwich), Andy Pape, Tony Currie, Ian Gillard, Mick Walsh, Tommy Docherty (ex-manager).

*Front row:* Gordon Hill (now NASL), Dave McCreery, Martyn Rogers, Steve Burk, Dean Neal, Dean Wilkins, Gary Waddock, Don Shanks, Ernie Howe.



# Our Visitors

**BANK OF IRELAND  
SPONSOR**

**IRISH COMMUNITY DAY**  
AT KENILWORTH ROAD  
SUNDAY 17th MAY 1981

CONTINUOUS ENTERTAINMENT 12 NOON-5 P.M.

*featuring*  
TWO OF IRELAND'S LEADING  
GAELIC FOOTBALL TEAMS

**C O R K**

**V**

**R O S C O M M O N**

ADMISSION £2.00 (Seating) £1.00 (Standing)

*Tickets available from*  
TICKET OFFICE, LUTON TOWN FC, KENILWORTH ROAD, LUTON

*Cheques to be made payable to*  
IRISH COMMUNITY DAY

*All postal applications to include SAE*

# Reserve Report

## Plymouth 3 Luton 1

On a heavy pitch, played in driving rain, Plymouth cut out the thrills and played forceful football, scoring after 10 minutes from a defensive error. Luton created a few chances, but always had one touch too many and the openings were lost.

With the players hardly distinguishable in the mud, Plymouth struck again when a long ball found our defence too square leaving Alan Judge to pick the ball out of the net from the centre-forward's shot.

Luton hit back with a fine cross shot by Godfrey Ingram, but Plymouth replied following a corner with a fine shot on the volley to give them a deserved 3-1 win.

Luton suffered by playing too much tip-tap football on a quagmire of a pitch and should have learned that lesson long ago.

*Team:* Judge, Johnson, Turner, West, Foote, Aizlewood, Madden, Ingram, Small, Fuccillo, Heath. *Sub:* Cole.

*Team:* Phelps, Johnson, Thomas, Brammer, Foote, Turner, Madden, Ingram, Heath, Fuccillo, Keys. *Sub:* Cole.

## Tottenham 3 Luton Town 1

On a warm afternoon with Spurs fielding a talented team, Town were always hard pressured and Spurs opened the scoring when Alan Judge pulled down Gibson in the penalty area. Town hit back and following a free-kick by Godfrey Ingram, Frankie Bunn coolly placed his shot into the far corner of the net for the equaliser.

Upon the resumption — Spurs, capably led by Villa, their Argentinian international, played some fine football, and it was no great surprise when they scored two further goals to win by a 3-1 margin. Although defeated, it was fine experience for many of our young players to play against some fine players.

*Team:* Judge, Johnson, Turner, Brammer, Foote, Fuccillo, Madden, Ingram, Bunn, Heath, Keys. *Sub:* Cole.

## Luton Town 0 West Ham United 3

In a match which had its bizarre moments, both young sides strove in earnest to take an early lead. Midway through the first-half, the Hammers broke and an attempted clearance by Wayne Turner ended in our own net.

The Town pressed strongly in the second period trying to get on terms. A golden chance, and also a missed penalty by Godfrey Ingram with 10 minutes to go deflated the young Hatters. West Ham scored a second immediately, although the linesman was the only person in the stadium who thought the scorer was onside, and West Ham rounded off the proceedings by adding a third a minute from time. It was a result that flattered the Hammers, but also a lesson in learning the game for the young Hatters.

## Luton Town 0 Crystal Palace 1

Both teams kept a frantic pace in this lively competitive encounter and good efforts by Frankie Bunn and Michael Small were well saved by the Palace keeper.

The second-half was similar to the first and long range efforts by Michael Small came close to breaking the deadlock. Indeed, with two minutes to go, Crystal Palace snatched the only goal of the game in what proved to be a rather cruel result. Nevertheless, it was a far better team performance than in recent games, and the lads could certainly walk tall after the efforts they put in.

*Team:* Judge, Johnson, Turner, West, North, Aizlewood, Madden, Small, Bunn, Fuccillo, Heath. *Sub:* Daniel.

*Achieve your goal  
with*

**BMW**

**IVOR HOLMES**

LUTON 56622

BEDFORDSHIRE

MAIN DEALERS IN BEDFORDSHIRE

Today's Match Kit  
is sponsored by

*CJ*

*Press. Public Relations.*

*&*

*Marketing Consultants*

*Follow the example  
of  
Luton Town Football Club  
and  
put your team at the  
top of the league*

15, Maple Grove  
Woburn Sands  
Bucks

Telephone  
Milton Keynes  
(0908) 583809

# Luton News



**BEST SELLER  
EVERY WEEK**

All the best sports  
news, jobs, cars,  
houses and bargains

# LEAGUE TABLES POINTS



# ATTENDANCES

Home fixtures in Bold    Luton score first    Name in Bold = Scorer    1Figure = Number of Goals    + Denotes substitute player    \* Own Goal

Date	Fixture	Att.	Res.	Pts.	Pos.	1	2	3	4	5	6	7	8	9	10	11	12
Aug. 16	West Ham United	27,933	2-1			Findlay	Stephens	Donaghy	Grealish	Saxby	Price	Hill	Stein	White <sup>1</sup>	Antic <sup>+</sup>	Moss <sup>2</sup>	West
Aug. 19	Watford	13,887	1-0	4	4	Findlay	Stephens	Donaghy	Grealish	Saxby	Price	Hill	Stein	Bunn <sup>1</sup>	Antic <sup>+</sup>	Moss	West
Aug. 23	Derby County	11,025	1-2	4	4	Findlay	Stephens	Donaghy	Grealish	Saxby	Price	Hill	Stein	Bunn <sup>1</sup>	Antic <sup>+</sup>	Moss	Aizlewood
Aug. 27	Reading (LC 2-1st Leg)	5,778	2-1	-	4	Findlay	Stephens	Donaghy	Grealish	Saxby	Price	Hill	Stein	Bunn <sup>1</sup>	Antic <sup>+</sup>	Moss	White
Aug. 30	Newcastle United	13,164	1-2	-	4	Findlay	Stephens	Donaghy	Grealish	Saxby	Price	Hill	Stein	Bunn <sup>1</sup>	Antic <sup>+</sup>	Moss	Ingram
Sept. 2	Reading (LC 2-2nd Leg)	5,707	1-1	-	5	Findlay	Stephens	Donaghy	Grealish	Saxby	Price	Hill	Stein	Bunn <sup>1</sup>	Antic <sup>+</sup>	Moss	White
Sept. 6	Wrexham	8,244	1-1	-	5	Findlay	Stephens	Donaghy	Grealish	Saxby	Price	Hill	Stein	Bunn <sup>1</sup>	Antic <sup>+</sup>	Moss	White
Sept. 13	Blackburn Rovers	9,076	0-3	5	18	Findlay	Stephens	Donaghy	Grealish	Saxby	Price	Hill	Stein	Bunn <sup>1</sup>	Antic <sup>+</sup>	Moss	White
Sept. 20	Orient	8,506	2-1	7	10	Findlay	Stephens	Donaghy	Grealish	Saxby	Price	Hill	Stein	Bunn <sup>1</sup>	Antic <sup>+</sup>	Moss	White
Sept. 27	Manchester City (LC 3)	10,265	1-2	7	10	Findlay	Stephens	Donaghy	Grealish	Saxby	Price	Hill	Stein	Bunn <sup>1</sup>	Antic <sup>+</sup>	Moss	White
Sept. 27	Grimsby Town	9,044	0-0	8	12	Findlay	Stephens	Donaghy	Grealish	Saxby	Price	Hill	Stein	Bunn <sup>1</sup>	Antic <sup>+</sup>	Moss	White
Oct. 4	Notts County	8,736	0-1	8	13	Findlay	Stephens	Donaghy	Grealish	Saxby	Price	Hill	Stein	Bunn <sup>1</sup>	Antic <sup>+</sup>	Moss	White
Oct. 7	Bristol City	7,014	1-2	8	16	Findlay	Stephens	Donaghy	Grealish	Saxby	Price	Hill	Stein	Bunn <sup>1</sup>	Antic <sup>+</sup>	Moss	White
Oct. 11	Preston North End	5,620	0-1	8	19	Findlay	Stephens	Donaghy	Grealish	Saxby	Price	Hill	Stein	Bunn <sup>1</sup>	Antic <sup>+</sup>	Moss	White
Oct. 18	Shrewsbury Town	8,014	1-1	9	19	Findlay	Stephens	Donaghy	Grealish	Saxby	Price	Hill	Stein	Bunn <sup>1</sup>	Antic <sup>+</sup>	Moss	White
Oct. 21	Swansea City	8,402	2-2	10	16	Findlay	Stephens	Donaghy	Grealish	Saxby	Price	Hill	Stein	Bunn <sup>1</sup>	Antic <sup>+</sup>	Moss	White
Oct. 25	Cambridge United	7,219	3-1	12	14	Judge	Stephens	Donaghy	Grealish	Saxby	Price	Hill	Stein	Bunn <sup>1</sup>	Antic <sup>+</sup>	Moss	White
Nov. 1	Sheffield Wednesday	10,082	2-3	14	14	Judge	Stephens	Donaghy	Grealish	Saxby	Price	Hill	Stein	Bunn <sup>1</sup>	Antic <sup>+</sup>	Moss	White
Nov. 8	Queens Park Rangers	16,939	1-0	16	10	Findlay	Stephens	Donaghy	Grealish	Saxby	Price	Hill	Stein	Bunn <sup>1</sup>	Antic <sup>+</sup>	Moss	White
Nov. 15	Watford	17,031	3-2	18	11	Findlay	Stephens	Donaghy	Grealish	Saxby	Price	Hill	Stein	Bunn <sup>1</sup>	Antic <sup>+</sup>	Moss	White
Nov. 22	West Ham United	6,064	0-1	18	11	Findlay	Stephens	Donaghy	Grealish	Saxby	Price	Hill	Stein	Bunn <sup>1</sup>	Antic <sup>+</sup>	Moss	White
Nov. 29	Blackburn Rovers	8,300	2-2	20	11	Findlay	Stephens	Donaghy	Grealish	Saxby	Price	Hill	Stein	Bunn <sup>1</sup>	Antic <sup>+</sup>	Moss	White
Nov. 29	Bolton Wanderers	4,720	0-0	20	11	Findlay	Stephens	Donaghy	Grealish	Saxby	Price	Hill	Stein	Bunn <sup>1</sup>	Antic <sup>+</sup>	Moss	White
Dec. 6	Oldham Athletic	7,874	4-2	22	10	Findlay	Stephens	Donaghy	Grealish	Saxby	Price	Hill	Stein	Bunn <sup>1</sup>	Antic <sup>+</sup>	Moss	White
Dec. 13	Preston North End (2)	4,521	1-0	24	10	Findlay	Stephens	Donaghy	Grealish	Saxby	Price	Hill	Stein	Bunn <sup>1</sup>	Antic <sup>+</sup>	Moss	White
Dec. 19	Shrewsbury Town	16,006	2-0	26	9	Findlay	Stephens	Donaghy	Grealish	Saxby	Price	Hill	Stein	Bunn <sup>1</sup>	Antic <sup>+</sup>	Moss	White
Dec. 26	Chelsea	7,010	4-2	28	6	Findlay	Stephens	Donaghy	Grealish	Saxby	Price	Hill	Stein	Bunn <sup>1</sup>	Antic <sup>+</sup>	Moss	White
Dec. 27	Bristol Rovers	9,891	3-1	29	6	Findlay	Stephens	Donaghy	Grealish	Saxby	Price	Hill	Stein	Bunn <sup>1</sup>	Antic <sup>+</sup>	Moss	White
Jan. 3	Orient FA Cup 3	10,713	2-2	29	6	Findlay	Stephens	Donaghy	Grealish	Saxby	Price	Hill	Stein	Bunn <sup>1</sup>	Antic <sup>+</sup>	Moss	White
Jan. 10	Cardiff City	10,774	0-1	29	8	Findlay	Stephens	Donaghy	Grealish	Saxby	Price	Hill	Stein	Bunn <sup>1</sup>	Antic <sup>+</sup>	Moss	White
Jan. 17	Newcastle United	29,202	1-2	-	30	Findlay	Stephens	Donaghy	Grealish	Saxby	Price	Hill	Stein	Bunn <sup>1</sup>	Antic <sup>+</sup>	Moss	White
Jan. 24	Newcastle United FA Cup 4	16,479	2-2	30	6	Findlay	Stephens	Donaghy	Grealish	Saxby	Price	Hill	Stein	Bunn <sup>1</sup>	Antic <sup>+</sup>	Moss	White
Jan. 31	Derby County	9,350	3-1	32	10	Findlay	Stephens	Donaghy	Grealish	Saxby	Price	Hill	Stein	Bunn <sup>1</sup>	Antic <sup>+</sup>	Moss	White
Feb. 7	Blackburn Rovers	9,217	0-2	32	10	Findlay	Stephens	Donaghy	Grealish	Saxby	Price	Hill	Stein	Bunn <sup>1</sup>	Antic <sup>+</sup>	Moss	White
Feb. 21	Grimsby Town	8,075	0-0	33	9	Findlay	Stephens	Donaghy	Grealish	Saxby	Price	Hill	Stein	Bunn <sup>1</sup>	Antic <sup>+</sup>	Moss	White
Mar. 7	Orient	8,075	1-0	33	9	Findlay	Stephens	Donaghy	Grealish	Saxby	Price	Hill	Stein	Bunn <sup>1</sup>	Antic <sup>+</sup>	Moss	White
Mar. 14	Notts County (6)	8,745	3-1	37	7	Findlay	Stephens	Donaghy	Grealish	Saxby	Price	Hill	Stein	Bunn <sup>1</sup>	Antic <sup>+</sup>	Moss	White
Mar. 28	Bristol City (LCF)	9,412	0-0	38	7	Findlay	Stephens	Donaghy	Grealish	Saxby	Price	Hill	Stein	Bunn <sup>1</sup>	Antic <sup>+</sup>	Moss	White
Mar. 31	Wrexham	4,157	0-0	39	6	Findlay	Stephens	Donaghy	Grealish	Saxby	Price	Hill	Stein	Bunn <sup>1</sup>	Antic <sup>+</sup>	Moss	White
Apr. 4	Cambridge United	17,006	1-3	39	8	Findlay	Stephens	Donaghy	Grealish	Saxby	Price	Hill	Stein	Bunn <sup>1</sup>	Antic <sup>+</sup>	Moss	White
Apr. 11	Sheffield Wednesday																
Apr. 18	Queens Park Rangers (SF)																
Apr. 18	Bristol Rovers																
Apr. 20	Chelsea																
Apr. 21	Oldham Athletic																
Apr. 25	Bolton Wanderers																
May 2	F.A. Cup Final																
May 9	Swansea City (A)																

© Copyright of The Football League Ltd.

## FOOTBALL COMBINATION FIXTURES 1980-81

Aug. 16	Chelsea	27,933	2-1			Findlay	Stephens	Donaghy	Grealish	Saxby	Price	Hill	Stein	White <sup>1</sup>	Antic <sup>+</sup>	Moss <sup>2</sup>	West
Aug. 19	Southampton	13,887	1-0	4	4	Findlay	Stephens	Donaghy	Grealish	Saxby	Price	Hill	Stein	Bunn <sup>1</sup>	Antic <sup>+</sup>	Moss	West
Aug. 23	Derby County	11,025	1-2	4	4	Findlay	Stephens	Donaghy	Grealish	Saxby	Price	Hill	Stein	Bunn <sup>1</sup>	Antic <sup>+</sup>	Moss	Aizlewood
Aug. 27	Reading (LC 2-1st Leg)	5,778	2-1	-	4	Findlay	Stephens	Donaghy	Grealish	Saxby	Price	Hill	Stein	Bunn <sup>1</sup>	Antic <sup>+</sup>	Moss	White
Aug. 30	Newcastle United	13,164	1-2	-	4	Findlay	Stephens	Donaghy	Grealish	Saxby	Price	Hill	Stein	Bunn <sup>1</sup>	Antic <sup>+</sup>	Moss	Ingram
Sept. 2	Reading (LC 2-2nd Leg)	5,707	1-1	-	5	Findlay	Stephens	Donaghy	Grealish	Saxby	Price	Hill	Stein	Bunn <sup>1</sup>	Antic <sup>+</sup>	Moss	White
Sept. 6	Wrexham	8,244	1-1	-	5	Findlay	Stephens	Donaghy	Grealish	Saxby	Price	Hill	Stein	Bunn <sup>1</sup>	Antic <sup>+</sup>	Moss	White
Sept. 13	Blackburn Rovers	9,076	0-3	5	18	Findlay	Stephens	Donaghy	Grealish	Saxby	Price	Hill	Stein	Bunn <sup>1</sup>	Antic <sup>+</sup>	Moss	White
Sept. 20	Orient	8,506	2-1	7	10	Findlay	Stephens	Donaghy	Grealish	Saxby	Price	Hill	Stein	Bunn <sup>1</sup>	Antic <sup>+</sup>	Moss	White
Sept. 27	Manchester City (LC 3)	10,265	1-2	7	10	Findlay	Stephens	Donaghy	Grealish	Saxby	Price	Hill	Stein	Bunn <sup>1</sup>	Antic <sup>+</sup>	Moss	White
Sept. 27	Grimsby Town	9,044	0-0	8	12	Findlay	Stephens	Donaghy	Grealish	Saxby	Price	Hill	Stein	Bunn <sup>1</sup>	Antic <sup>+</sup>	Moss	White
Oct. 4	Notts County	8,736	0-1	8	13	Findlay	Stephens	Donaghy	Grealish	Saxby	Price	Hill	Stein	Bunn <sup>1</sup>	Antic <sup>+</sup>	Moss	White
Oct. 7	Bristol City	7,014	1-2	8	16	Findlay	Stephens	Donaghy	Grealish	Saxby	Price	Hill	Stein	Bunn <sup>1</sup>	Antic <sup>+</sup>	Moss	White
Oct. 11	Preston North End	5,620	0-1	8	19	Findlay	Stephens	Donaghy	Grealish	Saxby	Price	Hill	Stein	Bunn <sup>1</sup>	Antic <sup>+</sup>	Moss	White
Oct. 18	Shrewsbury Town	8,014	1-1	9	19	Findlay	Stephens	Donaghy	Grealish	Saxby	Price	Hill	Stein	Bunn <sup>1</sup>	Antic <sup>+</sup>	Moss	White
Oct. 21	Swansea City	8,402	2-2	10	16	Findlay	Stephens	Donaghy	Grealish	Saxby	Price	Hill	Stein	Bunn <sup>1</sup>	Antic <sup>+</sup>	Moss	White
Oct. 25	Cambridge United	7,219	3-1	12	14	Judge	Stephens	Donaghy	Grealish	Saxby	Price	Hill	Stein	Bunn <sup>1</sup>	Antic <sup>+</sup>	Moss	White
Nov. 1	Sheffield Wednesday	10,082	2-3	14	14	Judge	Stephens	Donaghy	Grealish	Saxby	Price	Hill	Stein	Bunn <sup>1</sup>	Antic <sup>+</sup>	Moss	White
Nov. 8	Queens Park Rangers	16,939	1-0	16	10	Findlay	Stephens	Donaghy	Grealish	Saxby	Price	Hill	Stein	Bunn <sup>1</sup>	Antic <sup>+</sup>	Moss	White
Nov. 15	Watford	17,031	3-2	18	11	Findlay	Stephens	Donaghy	Grealish	Saxby	Price	Hill	Stein	Bunn <sup>1</sup>	Antic <sup>+</sup>	Moss	White
Nov. 22	West Ham United	6,064	0-1	18	11	Findlay	Stephens	Donaghy	Grealish	Saxby	Price	Hill	Stein	Bunn <sup>1</sup>	Antic <sup>+</sup>	Moss	White
Nov. 29	Blackburn Rovers	8,300	2-2	20	11	Findlay	Stephens	Donaghy	Grealish	Saxby	Price	Hill	Stein	Bunn <sup>1</sup>	Antic <sup>+</sup>	Moss	White
Nov. 29	Bolton Wanderers	4,720	0-0	20	11	Findlay	Stephens	Donaghy	Grealish	Saxby	Price	Hill	Stein	Bunn <sup>1</sup>	Antic <sup>+</sup>	Moss	White
Dec. 6	Oldham Athletic	7,874	4-2	22	10	Findlay	Stephens	Donaghy	Grealish	Saxby	Price	Hill	Stein	Bunn <sup>1</sup>	Antic <sup>+</sup>	Moss	White
Dec. 13	Preston North End (2)	4,521	1-0	24	10	Findlay	Stephens	Donaghy	Grealish	Saxby	Price	Hill	Stein	Bunn <sup>1</sup>	Antic <sup>+</sup>	Moss	White
Dec. 19	Shrewsbury Town	16,006	2-0	26	9	Findlay	Stephens	Donaghy	Grealish	Saxby	Price	Hill	Stein	Bunn <sup>1</sup>	Antic <sup>+</sup>	Moss	White
Dec. 26	Chelsea	7,010	4-2	28	6	Findlay	Stephens	Donaghy	Grealish	Saxby	Price	Hill	Stein	Bunn <sup>1</sup>	Antic <sup>+</sup>	Moss	White
Dec. 27	Bristol Rovers	9,891	3-1	29	6	Findlay	Stephens	Donaghy	Grealish	Saxby	Price	Hill	Stein	Bunn <sup>1</sup>	Antic <sup>+</sup>	Moss	White
Jan. 3	Orient FA Cup 3	10,713	2-2	29	6	Findlay	Stephens	Donaghy	Grealish	Saxby	Price	Hill	Stein	Bunn <sup>1</sup>	Antic <sup>+</sup>	Moss	White
Jan. 10	Cardiff City	10,774	0-1	29	8	Findlay	Stephens	Donaghy	Grealish	Saxby	Price	Hill	Stein	Bunn <sup>1</sup>	Antic <sup>+</sup>	Moss	White
Jan. 17	Newcastle United	29,202	1-2	-	30	Findlay	Stephens	Donaghy	Grealish	Saxby	Price	Hill	Stein	Bunn <sup>1</sup>	Antic <sup>+</sup>	Moss	White
Jan. 24	Newcastle United FA Cup 4	16,479	2-2	30	6	Findlay	Stephens	Donaghy	Grealish	Saxby	Price	Hill	Stein	Bunn <sup>1</sup>	Antic <sup>+</sup>	Moss	White
Jan. 31	Derby County	9,350	3-1	32	10	Findlay	Stephens	Donaghy	Grealish	Saxby	Price	Hill	Stein	Bunn <sup>1</sup>	Antic <sup>+</sup>	Moss	White
Feb. 7	Blackburn Rovers	9,217	0-2	32	10	Findlay	Stephens	Donaghy	Grealish	Saxby	Price	Hill	Stein	Bunn <sup>1</sup>	Antic <sup>+</sup>	Moss	White
Feb. 21	Grimsby Town	8,075	0-0	33	9	Findlay	Stephens	Donaghy	Grealish	Saxby	Price	Hill	Stein	Bunn <sup>1</sup>	Antic <sup>+</sup>	Moss	White
Feb. 28	Reading	10,774	0-1	34	10	Findlay	Stephens	Donaghy	Grealish	Saxby	Price	Hill	Stein	Bunn <sup>1</sup>	Antic <sup>+</sup>	Moss	White
Mar. 7	Queens Pk Rangers	16,939	2-0	36	9	Findlay	Stephens	Donaghy	Grealish	Saxby	Price	Hill	Stein	Bunn <sup>1</sup>	Antic <sup>+</sup>	Moss	White
Mar. 14	Leicester City	27,933	2-2	36	9	Findlay	Stephens	Donaghy	Grealish	Saxby	Price	Hill	Stein	Bunn <sup>1</sup>	Antic <sup>+</sup>	Moss	White
Mar. 21	West Ham United	27,933	0-3	36	9	Findlay	Stephens	Donaghy	Grealish	Saxby	Price	Hill	Stein	Bunn <sup>1</sup>	Antic <sup>+</sup>	Moss	White
Mar. 28	Plymouth Argyle	27,933	1-3	36	9	Findlay	Stephens	Donaghy	Grealish	Saxby	Price	Hill	Stein	Bunn <sup>1</sup>	Antic <sup>+</sup>	Moss	White
Apr. 4	Tottenham Hotspur	27,933	1-3	36	9	Findlay	Stephens	Donaghy	Grealish	Saxby	Price	Hill	Stein	Bunn <sup>1</sup>	Antic <sup>+</sup>	Moss	White
Apr. 11	Crystal Palace	27,933	0-4	36	9	Findlay	Stephens	Donaghy	Grealish	Saxby	Price	Hill	Stein	Bunn <sup>1</sup>	Antic <sup>+</sup>	Moss	White
Apr. 18	Oxford United	27,933	0-2	36	9	Findlay	Stephens	Donaghy	Grealish	Saxby	Price	Hill	Stein	Bunn <sup>1</sup>	Antic <sup>+</sup>	Moss	White
Apr. 25	Bristol City	27,933	0-2	36	9	Findlay	Stephens	Donaghy	Grealish	Saxby	Price	Hill	Stein	Bunn <sup>1</sup>	Antic <sup>+</sup>	Moss	White
Apr. 25	Reading	27,933	0-4	36	9	Findlay	Stephens	Donaghy	Grealish	Saxby	Price	Hill	Stein	Bunn <sup>1</sup>	Antic <sup>+</sup>	Moss	White
Apr. 25	Birmingham City	27,933	0-2	36	9	Findlay	Stephens	Donaghy	Grealish	Saxby	Price	Hill	Stein	Bunn <sup>1</sup>	Antic <sup>+</sup>	Moss	White

# COMMERCIAL COMMENT

Behind every successful club, there's an equally successful fundraising organisation. That's why, at Luton, we are proud of the sales figures involving our lotteries and souvenirs.

As far as souvenirs are concerned, we have branched out into the mail order business in a big way and many people — not only from this area — are taking advantage of the facility.

There is, of course, the alternative method of buying Luton Town souvenirs by popping into the pools office during the week or inspecting our stock at the souvenir kiosks inside the ground on match days.

Whichever method you choose, we know you will be delighted with the wide range of stock we offer our supporters. Because our stock is so comprehensive, we cannot list all the items we have for sale in your match day magazine.

But we invite you to inspect our huge range of stock. Competitive prices make our souvenirs the ideal gift for that birthday. And you name it — and we've probably got it. If we haven't, let us know and if demand is big enough, we will make the effort to stock it.

Sweat shirts, tee shirts, big shirts and little shirts. They're all in the souvenir kiosks. Add that to

sweaters, mugs, pens, car stickers, mirrors, footballs, key rings, caps, scarves and badges and it's easy to see why we aim to please.

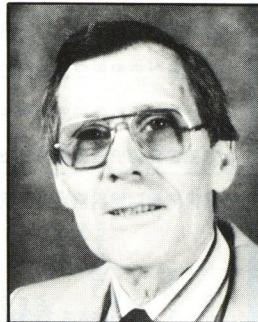
We anticipate receiving our new stock of sweaters, belts, ties and towels any day now. Pop in and see for yourself.

Statistically, our sales figures for souvenirs and lotteries make excellent reading. But we couldn't operate a successful organisation without your help.

Total prizes and bonuses paid to our winners exceed £880,000 with gross profits of over £450,000.

Any group of associations with that track record deserves to give itself a pat on the back. But, as we have said, we couldn't do it without your help. If you are not involved with us as a customer or agent — and there can't be many left in the area who aren't — give us a ring on Luton 30748 and we'll be happy to put you in the picture.

**MIKE HARDWICKE** *Commercial Manager*



## Century Club

Today, we extend a welcome to Queens Park Rangers. Our game in October did not have a good result for us — so, today, we hope to be on the winning side. Best wishes to our team for a good game and good result:

We now have only two games left at home, both against clubs with whom we have become friends over the years. We know we shall have vice-presidents from Bristol and Oldham joining us in the Century Club on these occasions. Our guests from Cambridge spent an enjoyable afternoon with us a fortnight ago, and financially, it was one of the most successful days we have had in the Century Club.

The Annual Ball took place last Wednesday, so by the time you read this, most of you will know who the Player of the Year was. We have so many good players in our team, choosing one can be a difficult task. The name of the player, and of the Century Club supporter of the year will appear in our next column, for the benefit of our many friends in other parts of the football club, who have an interest in our activities.

After the Oldham game, we shall have our end of season party at which manager David Pleat will announce the Young Player of the Year, who will hold the Barry O'Donovan Trophy for a year. This one has all of us guessing, right until the last minute, as the manager has the headache of deciding which of the young players deserves the award. Tickets for this evening will shortly be available.

## Fancy Some Rabbit



"I suppose it all started off with us singing about our local patch coz it's a great part of the world. Dahn 'ere, they have the best boozers for a start, and that ain't bad — know what we mean?"

That quote came from Chas and Dave, well known for their hit recording of Rabbit, Rabbit and, being from London with strong football connections, they took the opportunity of watching Rangers at Kenilworth Road this afternoon.

They are appearing at Cesars Palace, Luton, for three nights from 30th April and, if you want to listen again to another rendering of Rabbit, Rabbit, we suggest you visit the club to watch Chas and Dave live.

## WHITBREAD



## TROPHY BITTER

## LUTON SPORTS PRESS LTD



THE LOTTERY TICKET SPECIALISTS

## welcome QUEENS PARK RANGERS

Another valued customer

## LUTON 28757

## QUIZ SPOT



This week's quiz is a picture taken in 1972 during a visit to a local brewery. The question is who are the two players standing next to Mike Keen?

Answers should be sent to secretary John Wilkinson at the club's offices by Thursday 16th April. The first two correct answers will receive two tickets each for our last home game against Oldham.

The winner of the last quiz featured in the Cambridge United match day magazine was Mr P. Hinds, of Alexandra Avenue, Luton, who gave the correct answers as follows: 1. Bob Hatton; 2. Mike Keen; 3. Stuart Imlach; 4. Tony Reed; 5. Alan Ross; 6. Malcolm Macdonald.

## Today's Sponsor

Argos, the catalogue showroom organisation is in a league of its own, and we invite you to visit their Luton branch in the Arndale Centre.

Less than eight years old, Argos has climbed into the first division of British retailers, based on its reputation of first-class goods, sold at flag-waving prices.

From the moment the first showroom opened, Argos' name went into the book — the 250-page catalogue it prints twice a year. Each issue illustrates the entire range of 2,000-plus products, backed by famous manufacturers' names.

The individual Argos system invites the shopper to collect a catalogue from any of its 104 stores. Having "shopped" the catalogue in comfort at home, the customer simply visits the showroom to obtain the items of his or her choice.

With prices an average 30 per cent cheaper than the opposition, the Argos quality product — budget price team is hard to beat.

Home or away, Argos saves and scores.

# WHO'S PLAYING



## LUTON TOWN

TEAM CHANGES

- 1 JAKE FINDLAY
- 2 KIRK STEPHENS
- 3 MAL DONAGHY
- 4 TONY GREALISH
- 5 MIKE SAXBY
- 6 PAUL PRICE
- 7 RICKY HILL
- 8 BRIAN STEIN
- 9 STEVE WHITE
- 10 RADDY ANTIC
- 11 DAVID MOSS
- 12

## Q.P.R.

TEAM CHANGES

- 1 JOHN BURRIDGE
- 2 DON SHANKS
- 3 IAN GILLARD
- 4 BARRY SILKMAN
- 5 STEVE WICKS
- 6 GLENN ROEDER
- 7 MIKE FLANAGAN
- 8 GERRY FRANCIS
- 9 TONY SEALY
- 10 TONY CURRIE
- 11 GARY WADDOCK
- 12

# HALF-TIME SCORECHECK

Cardiff v Preston  
Derby v Notts County  
Grimsby v West Ham  
Newcastle v Cambridge  
Oldham v Chelsea  
Orient v Swansea  
Wrexham v Sheffield Wednesday  
Brentford v Chesterfield  
Fulham v Carlisle  
Huddersfield v Millwall  
Reading v Burnley  
Rotherham v Charlton

Manchester City v Ipswich (FAC)  
Tottenham v Wolves (FAC)  
Arsenal v Leeds  
Coventry v Manchester United  
Crystal Palace v Birmingham  
Everton v Norwich City  
Middlesbrough v Brighton  
Nottingham Forest v Liverpool  
Stoke v Sunderland  
Blackburn v Bristol City  
Bolton v Watford  
Bristol Rovers v Shrewsbury



OFFICIAL  
**21**  
TOKEN

Saturday 11th April 1981

OUR NEXT HOME LEAGUE MATCH

LEAGUE DIVISION TWO

Saturday 18th April 1981

**BRISTOL ROVERS**

Kick-off 3.00 p.m.

Tickets available from the Ticket Office

**WHISTLE AND FLAGS**

REFEREE:  
P. G. REEVES  
Leicester

LINESMEN:  
H. E. BISHOP  
(Red Flag)

R. W. PELLATT  
(Yellow Flag)

