

THE HATTER

OFFICIAL MATCH DAY MAGAZINE
PRICE 30p



INSIDE TODAY

- David's Diary..... page 5
- Today's opponents... page 13
- Hatters Chatter..... page 4
- Junior Hatters... pages 8 & 9
- Reserve report..... page 15

FOOTBALL LEAGUE DIVISION TWO
Saturday 14th March 1981
K.O. 3 p.m.

**LUTON TOWN v
BRISTOL CITY**

LUTON TOWN FC



70-72 Kenilworth Road, Luton
Tel: 411622

Season 1980-81

Chairman:
Denis Mortimer

Directors:
R. L. Banks, D. J. Evans,
E. S. Pearson, H. Richardson,
R. J. Smith, J. R. Yates
J. R. Smith (Chief Executive)
D. J. Pleat (Team Manager)

President:
T. Hodgson

Vice-Presidents:
J. A. C. Bain (Deputy President)
Lord Hill, Sir Reginald Pearson OBE,
A. J. Berry, J. B. Brent, B. Cole,
B. England, N. S. Fookes, G. B. Holland,
C. Holloway, I. E. Holmes,
C. J. Hudson, R. Larkinson,
L. Leppington,
Eric Morecambe OBE, R. Safranek,
E. Waller, R. Unwin

Playing:

Coaches: David Coates,
John Moore and
Trevor Hartley

Physiotherapist: John Sheridan

Doctor: W. A. C. Berry MBBS

Administration:

Club Secretary: John Wilkinson

Assistant Secretary: Bill Butler

*Project and
Advertising Manager:* Mike Beevor

*Commercial
Manager:* Mike Hardwicke

Catering Manager: Clive Hustwitt

*Youth Development
Officer:* Colin Ball

Solicitors: Lathom and Co.

Auditors: Josolyne, Layton,
Bennett & Co.

Photographer: Gareth Owen

Printers: Hemmings & Capey
(Leicester) Ltd.
Telephone: (0533)
768217

A C T I O N . . A C T I O N

NOTTS COUNTY 0 LUTON TOWN 1

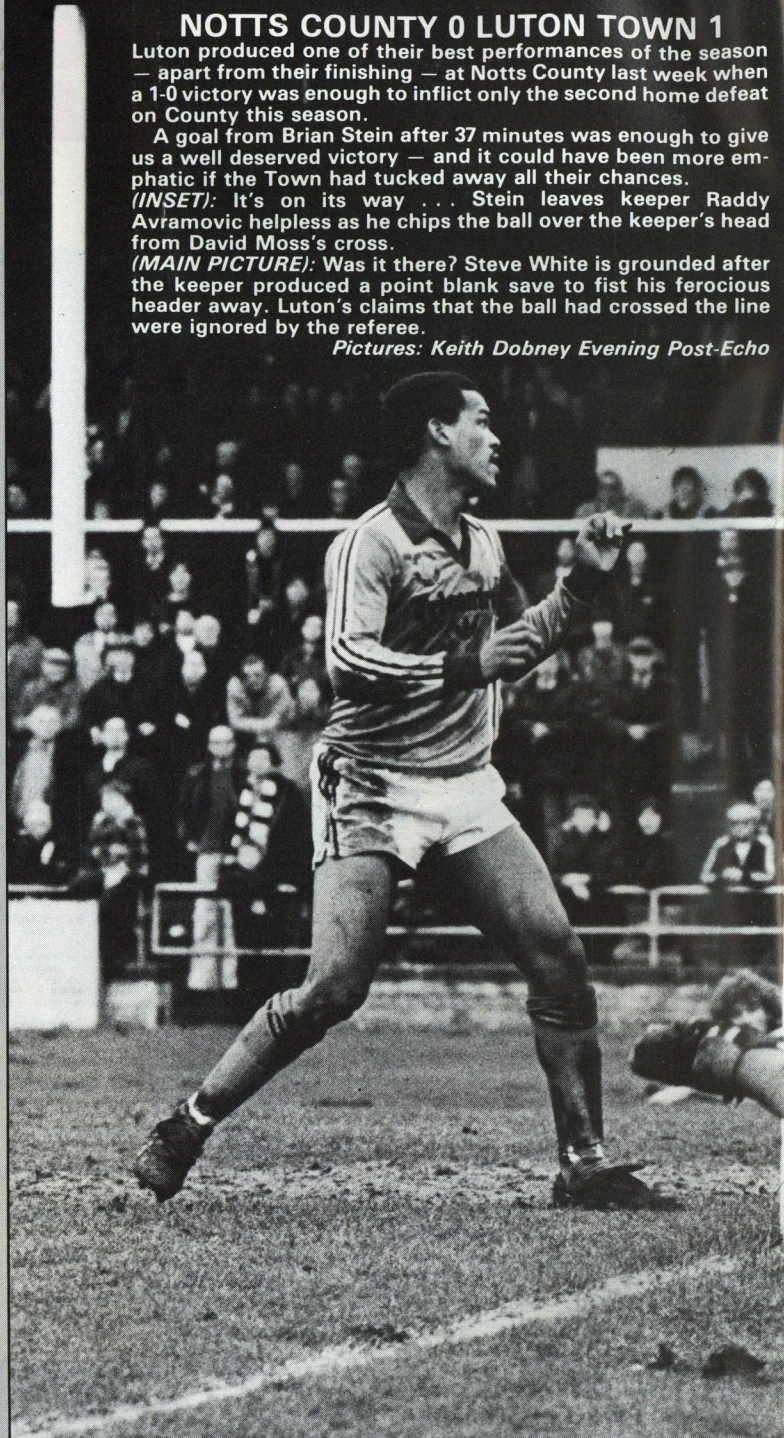
Luton produced one of their best performances of the season — apart from their finishing — at Notts County last week when a 1-0 victory was enough to inflict only the second home defeat on County this season.

A goal from Brian Stein after 37 minutes was enough to give us a well deserved victory — and it could have been more emphatic if the Town had tucked away all their chances.

(INSET): It's on its way ... Stein leaves keeper Raddy Avramovic helpless as he chips the ball over the keeper's head from David Moss's cross.

(MAIN PICTURE): Was it there? Steve White is grounded after the keeper produced a point blank save to fust his ferocious header away. Luton's claims that the ball had crossed the line were ignored by the referee.

Pictures: Keith Dobney Evening Post-Echo



A C T I O N . . A C T I O N

Wallspan
Bedrooms

HATTERS' CHATTER

Wallspan
Bedrooms

BOX OFFICE . . . BOX OFFICE

This afternoon, we have distributed to members ticket holders application forms for tickets for next season. But if you didn't receive one, there is a supply available at the ticket office. Since next season's prices were announced in the local Press, we have received enquiries about the basis on which they were built.

The only complaints we have received concern the decision to make the main wing stand unreserved. We'll start with that section which, quite frankly, we expected to cause a few rumblings.

As many of our main wing stand regulars are aware there was a great many of those seats unoccupied — even before the Ground Safety Act decimated our seating capacity. Supporters complained that they were unable to buy a seat when they arrived at Maple Road on match days despite the fact there were empty seats.



JOHN SMITH

regular supporters who have used that area for years.

When we pointed out that supporters could buy seats in that area from the Kenilworth Road ticket office, it was obvious people didn't want the bother of pushing their way through Beech Hill Path to the ticket office and then make their way back to the wing stand, especially 10 minutes before the kick-off.

We have now decided to have a trial period at making the wing stand unreserved, but we have not done so without considering the

CHOOSE A SEAT

It is still possible to have a members' ticket for this stand at this season's prices! However, it will be unreserved and you can still have the pick of the seats which are available when you arrive.

In addition, if you already are a wing stand seat holder and wish to retain a seat, you may choose any one in blocks D, E, and H. They are available with a discount of £5 bringing the price down to £40.

If you are a senior citizen, juvenile under 15 or a full-time student, you pay only £20 whether you remain in the unreserved wing stand or move into one of the other blocks. We hope you will bear with us next season because, if we can fill the wing stand, it will help us to keep our members' tickets at their current low level.

Regarding the other sections — you will note that, with the exception of A, B, and C blocks — which are sold out already — there is an increase of £5 on last season's prices. We have spent a long time juggling with the figures produced by last season's fantastic response and hope the majority of fans will support our efforts again this season.

John Smith our chief executive has made the smallest possible increase to encourage our regulars to renew their tickets.

Regarding the extra increase on those seats in A, B, and C blocks, we felt we underpriced those last season and the new price of £50 is still LESS than that paid in the 1979-80 season.

JUNE DEADLINE

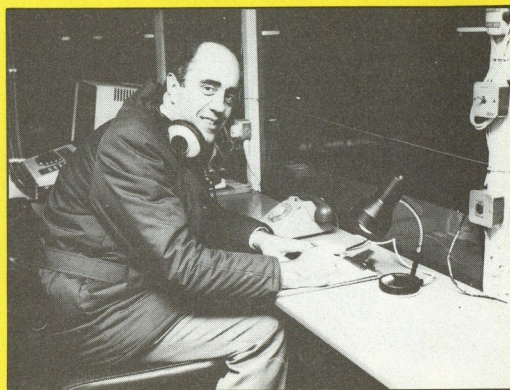
When applying for your new members' ticket, please fill in an application form before posting your renewal instructions, or alternatively before you arrive at the ticket office. The more supporters who apply by post the better. This gives us much more time to deal with your applications and many of these can be handled outside normal office hours. Remember what we always say, we are here to help you as much as possible. Don't shoot the piano player, he's only doing his best.

Remember that 30th June is the deadline for renewing your present seats and for obtaining the seat at the price on the application form. This is a definite time limit and all prices will increase by £5 from 1st July and all seats not renewed will go on general sale.

If you are liable to be on holiday during the period at the end of June, please renew your tickets before you go.

Tickets are now on sale for the home games against Cambridge and QPR. Priced at £3, they may be obtained from the Kenilworth Road ticket office which will be open for a short period after today's game.

BEHIND THE SCENES



This week we feature the face behind the voice. John Buttle is our match day announcer and has been doing the job at least twice a week for the past 16 years. He has also been involved with the Hospital Commentary Scheme for 19 years and is currently the chairman of that committee.

John does not confine his announcing only to football, he has often been heard at the annual firework display at Wardown Park, and the Musical Pageant presented by Shaw and Kilburn. He is also a former local referee and a supporter of Luton Town since 1946.

PEN FRIENDS WANTED

Calling all Luton fans between the age of 12 and 25 . . . how would you like a pen friend in England or abroad?

The International Pen Friend League wants to hear from the Town's supporters who would regularly like to write to other young people. For further information, enclose a SAE and write to Football Division, Pen Friend League International, 355 Birchfield Road, Perry Barr, Birmingham B20 3BJ.

DAVID'S DIARY

Last Saturday's performance at Nottingham was a tremendous boost at this stage in the season. Our supporting travellers must have been as thrilled with the overall team determination as I was.

Technically, tactically, skilfully and physically we deservedly won, and only the finishing can be faulted. The situation is still wide open for those bold enough to push on. We need good support at home when we are finding difficulties scoring.

The introduction of freedom of contract, coupled with falling gates and the difficult economic climate, has pushed many clubs into severe financial trouble.

Even relatively successful clubs have had disastrous seasons at the turnstiles. Two weeks ago, I visited Southend on a Friday evening to see a club who were five points clear at the top of the Fourth Division. Only 4,000 people were interested enough to watch. Earlier in the week, I saw Arsenal play Manchester City at Highbury in front of 24,000 people — and the mighty Liverpool dropped to 36,000 for a European Cup quarter final.

Our policy at Luton has to be to keep Second Division football at Kenilworth Road and hope a determined push can get us into the First Division. To do this, we have to pay our way, and we have to admit that this has been more than difficult as we have not captured big gates, nor sold big in the transfer market. Consequently, some decisions may have to be taken which are not popular, but the long-term overall future of the club will always be the major consideration. Although there will be many players out of employment at the season's end, we are fortunate in some ways that we have fixed up certain players during the season. Supporters will also be heartened to know that the nucleus of players who remain are not involved in severe contractual disputes which could mean imminent departure.

Despite mid-term departures, our reserves and youth sides under Trevor Hartley's and John Moore's guidance have maintained excellent results. The South East Counties side in recent weeks have been fielding all schoolboys. Amongst these have been four boys whom we consider worthy of an apprenticeship, and others who have still to convince us of their merits.

The players would like to thank Mr Nicholls and the Bletchley Bobbers for their social evening at the Bull and Butcher. Also, it was nice for the club to beat their supporters in a sports quiz at the Century Club the following evening. Unfortunately, I was not able to go to either of these events, as I was away looking at scouts' recommendations prior to a possible last-minute transfer deadline scramble.

As part of our football education, we will play Malmo in Sweden, in a friendly on 15th April. The experience gained against difficult opposition will help our team's development. The manager of Malmo is Keith Blunt, a respected English coach who worked with Tony Waiters at Plymouth and was appointed to assist Malmo by current Bristol City manager, Bob Houghton.

In welcoming Bob here, we sincerely hope he recreates the success he had with Malmo for Bristol City. Hopefully, both sides can contribute to an entertaining game today that everyone can enjoy.



J F MEADE LTD

CIVIL ENGINEERING
BUILDING CONTRACTORS
PLANT HIRE

14 TENNYSON ROAD
LUTON, BEDS

Telephone:
0532 28740/414759



MOPEDS

MOPEDS

Get there Italian Style.

Available at:
RGM MOTOR CYCLES
50 HASTINGS STREET
LUTON

Telephone: 29360



LUTON 56622
BEDFORDSHIRE

Achieve your goal
with

BMW

MAIN DEALERS
IN
BEDFORDSHIRE

HOLMES

TOWN CLASSIFIEDS

ALUMINIUM WINDOWS

We make and install our own finest quality aluminium replacement windows, doors and patio doors. Competitive prices. Personal attention from your local firm:
W. H. ALLSOP & SONS, 153 NEWTOWN STREET, LUTON. Tel: Luton 20011 or evenings 424650/23472.

★ ★ ★

RUBBER STAMPS

and marking equipment, also general printers. For a prompt personal service contact: **Mount Tape Limited, Heathfield Works, Leyton Road, Harpenden, Herts. Tel: 64431/2/3 (24 hour service on 64431).**

★ ★ ★

PRINTING

HEMMINGS & CAPEY (LEICESTER) LTD. Your match day magazine printers.

★ ★ ★

PERSONAL

WANTED. Football programmes. Older the better. Cash paid. Luton Tel. 598108.

Happy Birthday to Paul Kennedy from all at Luton Town FC.

★ ★ ★

You can get your message in Town Classifieds for only 15p per word, £1 minimum payment. Send details with payments to Mike Beevor, Luton Town FC, Kenilworth Road, Luton.

John's Journal

After our first taste of Sunday football recently against Orient, I am still not convinced playing on the Sabbath is the answer to larger attendances. To prove the point, the gate at Brisbane Road two weeks ago was 8,074 — the season previous it was 9,292 played on a Saturday.

I know there are many arguments for and against playing on Sundays and I think it will be a while for the novelty to wear off, as it has for Fulham in the Rugby League, before we see if the scheme is successful.

Our visitors today were formed in 1894 and turned professional three years later. They were formed as Bristol South End but changed to Bristol City when the club went professional. They have played at Ashton Gate since 1904 having previously been at St. John's Lane.

Their record in Football League over the past 25 years is excellent having sampled First, Second and Third Divi-

sions in that time. In season 1954-55 while in the Third Division South, they accumulated 70 points, losing only six points of the 46 matches played.

Their record defeat was on 28th April 1934 when they were beaten 9-0 by Coventry City and, in November 1960, they beat Chichester 11-0 in the first round of the FA Cup to achieve their record victory.

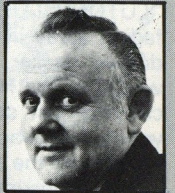
The name of John Atyeo always springs to mind when you mention Bristol City. His 597 League appearances for the club between 1951-66 will take a lot of beating. During that spell he also knocked in 315 goals. I wonder what his value could be on today's market.

They have had only seven managers since the war, Bob Hewison, Bob Wright, Pat Beasley, Peter Doherty, Fred Ford and Alan Dicks. Current manager, Bob Houghton, is in his first season at Ashton Gate. Bob had the honour of guiding Swedish club,

Malmö, to a place in the European Cup Final.

The last time they played at Kenilworth Road in a League fixture was on 1st November 1975 when a goalless draw was the outcome. The Town side that day was: Barber, John Ryan, Thomson, Chambers, Faulkner, Paul Fletcher, Jimmy Ryan, King, Anderson, West, Aston. *Sub:* Husband. The attendance was 11,446. The match played earlier this season resulted in a 2-1 defeat for us and we hope that we can reverse that score this afternoon.

Don't forget that a telephone call to our match enquiry number, 33010, will give you all match details if you are in doubt about any game due to bad weather.



JOHN WILKINSON Secretary

MEMBERS OF THE

KENILWORTH SUITE

A. G. BERRY ESQ.
BRENGREEN HOLDINGS LTD.
61 CHEAPSIDE, LONDON EC2V 6AX
TEL: 01-248 6026

BLUE ARROW STAFF BUREAU
3 HOLYWELL HILL, ST. ALBANS,
HERTS.
TEL: ST. ALBANS 61373

B. COLE ESQ.
CLEANDUSTRIAL SERVICES LTD.
PALMERS GREEN, LONDON N13
TEL: 01-882 4626

DRAPERS COACHES
117B GARDENIA AVENUE, LUTON
TEL: LUTON 597391

FILMERGRAPHIC ASSOCIATES
PHOTOTYPESETTING AND PRINTING
BAINSON HOUSE, ALTON ROAD
LUTON
TEL: LUTON 36407

FINE STAMPS LTD.
BILTON WAY, LUTON
TEL: LUTON 36761

MR. R. FITZPATRICK
PRE HOTEL, REDBOURN ROAD,
ST. ALBANS, HERTS AL3 6JZ

N. S. FOOKES ESQ.
N. S. FOOKES, ENGINEERING
SERVICES LTD.
45 LATIMER ROAD, LUTON
TEL: LUTON 26139

MR. E. FOUNTAIN
VAUXHALL MOTORS, LUTON

S. GOLBY
FREDK RAY LTD.
STANBRIDGE ROAD
LEIGHTON BUZZARD
TEL: 372241

BRIAN E. HANDSCOMBE
(LIFE AND PENSIONS BROKER)
48 ALMA STREET
LUTON LU1 2PL
TEL: LUTON 425921/4

G. B. HOLLAND ESQ.
G. B. HOLLAND & CO. LTD.
MOTHERWELL WAY, LONDON ROAD
WEST THURROCK, ESSEX

MR. I. E. HOLMES
IVOR HOMES LTD.
82-88 MARSH ROAD, LUTON
TEL: LUTON 56622

C. J. HUDSON ESQ.
E. W. HOLDINGS LTD.
6 UNION ST. LUTON
TEL: LUTON 30511

RICHARD C. LARKINSON
(BALDOCK) LTD.
STATION WORKS, BALDOCK, HERTS.
TEL: BALDOCK 893158

P. LAYCOCK
LUTON SPORTS PRESS
HAZELBURY CRESCENT, LUTON
TEL: LUTON 28757

MARK JAMES (SALVAGE) LTD.
16 WEST STREET, DUNSTABLE
TEL: DUNSTABLE 605944

DR. & MRS. G. L. PLESTER
9 BRIARS CLOSE, NUNEATON
WARWICKSHIRE

A. HUNTER ESQ.
RAVENMERE LTD. ALLRIC HOUSE
21 FARLEY HILL, LUTON
TEL: LUTON 32640

RICHMOND ELECTRONICS
(MARKYATE) LTD.
HICKS ROAD, MARKYATE, HERTS.
TEL: LUTON 840761

ROBINSON METAL (LUTON) LTD.
CALEB CLOSE
464 DUNSTABLE ROAD, LUTON
TEL: LUTON 53866

R. S. SAFRANEK ESQ.
NEAHURST LTD. LONDON RD.
LOWER STONDON, HITCHIN
TEL: HITCHIN 94-813545

TRICENTROL CARS (LUTON) LTD.
326-340 DUNSTABLE ROAD, LUTON
TEL: LUTON 31133

T. & H. TYRE SERVICES LTD.
MANOR ROAD, LUTON
TEL: LUTON 27665

R. W. UNWIN ESQ.
R. W. UNWIN & CO. LTD.
PROSPECT PLACE, WELWYN HERTS.
TEL: WELWYN 6441

WALLSPAN BEDROOMS
INDUSTRIAL ESTATE
MAULDEN ROAD, FLITWICK, BEDS.
TEL: FLITWICK 3621

JUNIOR HATTERS



I'm sure you were disappointed with the result against Grimsby at our last home game. I was, but for me, compensation came from two different sources. The first was hearing the shrill chants of "LUTON, LUTON, L-U-T-O-N" fading away in the distance as a double decker bus lumbered its way over the Maple Road Bridge carrying just some of the many youngsters who had watched the game from the *Evening Post-Echo* junior enclosure and willed Luton on for 90 minutes. They were saying, "We'll be back, the next match is another game". So here we are, and keep up the cheers.

The second piece of compensation came in the form of a splendid evening, in company with other Junior Hatters' parents, friends and players, at the Leicester Arms, by kind permission of Mr Len Green, the landlord.

A fine evening's entertainment, plus a superb buffet provided by Len's wife, was rounded off by Len presenting me with £104 for our Junior Hatters clubroom fund, this being the proceeds from the evening's raffle. I know all the members will join me in thanking Len very much for his efforts on our behalf and also

thanks to parents and friends for their support.

We have now reached the £500 mark, halfway to my original target of £1,000. I must say an official thank you at this point to several parents who are also pools agents, who have kindly donated their hard earned commission to our clubroom fund. I am personally very grateful for any help in this direction, it is most appreciated.

Don't forget our next Junior Hatters meeting — Wednesday 18th March in the Hatters Club at 6.30 p.m. We are planning to hold our Mini Talent Contest, augmented by Colin Walker who will entertain and encourage our young artists. I'm looking forward to a good evening — see you there!

Keep watching for more regular Junior Hatters news in the *Evening Post-Echo* soon.

Our lucky scoreboard quiz winner for the last home game was Stephen Pakes of Strathmore Avenue, Luton. Stephen correctly answered as follows:

1. Luton Town have had three grounds.
2. (a) Dallow Lane; (b) Dunstable Road, (where the Odeon Cinema now stands); (c) Kenilworth Road.

TODAY'S MASCOT



Our mascot this afternoon has travelled a long way to be with us. He is Christopher Everest, of Broad Oak, Rye, Sussex. He celebrates his 14th birthday today and is a pupil of Claverham Community College. He plays football and his special interests include fishing, coin and stamp collecting. His favourite Luton player is David Moss.



Junior Hatter Matthew Fry, of 13 Foxbury Close, Luton, doesn't regret entering our scoreboard competition in the game against Blackburn Rovers. He won and is pictured with Colin Ball before the Grimsby game receiving his prize of a Luton shirt.

3. The official opening of Kenilworth Road took place on the evening of Monday 4th September 1905. Our opponents were Plymouth Argyle. Well done, Stephen, a Luton Town shirt will be yours today before the kick-off.

You will have noticed that, in the match day magazine for the game against Grimsby, there were no birthday greetings to Junior Hatters. The problem is that there are too many of them to include and I am currently making alternative arrangements to have them published.

COLIN BALL
Youth Development Officer

WHICH SIDE WAS HE ON?

EPISODE NINETEEN by Ray Aspden

THE STORY SO FAR... YOUNG "BOBBIN" DINO, LEATOWN'S FOREIGN SIGNING WAS BEING USED BY M.I.6. AS A DECOY TO TRAP A TERRORIST GANG FROM HIS HOMELAND. HE WAS AT A COUNTRY HOTEL FOR PRE-MATCH TRAINING

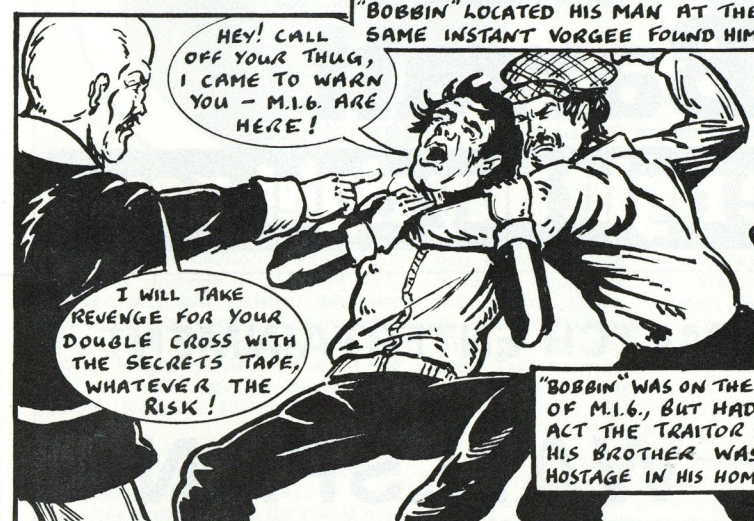
SQUID, OF M.I.6. LOOKED OUT FROM HIS BEDROOM WINDOW.



NOW WHERE IS BOBBIN OFF TO SO EARLY?



A EARLY MORNING RUN IS MY CHANCE TO FIND VORGEER AND WARN HIM!



HEY! CALL OFF YOUR THUG, I CAME TO WARN YOU - M.I.6. ARE HERE!

"BOBBIN" LOCATED HIS MAN AT THE SAME INSTANT VORGEER FOUND HIM!

I WILL TAKE REVENGE FOR YOUR DOUBLE CROSS WITH THE SECRETS TAPE, WHATEVER THE RISK!

"BOBBIN" WAS ON THE SIDE OF M.I.6., BUT HAD TO ACT THE TRAITOR BECAUSE HIS BROTHER WAS HELD HOSTAGE IN HIS HOMELAND!



THUD!

BOTH SIDES ARE AGAINST ME....!

WHEN "BOBBIN" RECOVERED CONSCIOUSNESS HE FOUND HIMSELF THE GUEST OF HONOUR AT A LYNCHING PARTY!



SHALL I STRETCH HIM NOW BOSS?

NO, NOT UNTIL I'VE HEARD HIM WHIMPER AND CRY FOR MERCY!



GET ON YOUR BIKE VORGEER..

..I WANT NO PART OF YOUR TERRORISM! LEAVE ME ALONE TO PLAY SOCCER!



THEN A RIFLE SHOT BARKED!

ARGH! MY SHOULDER'S SHATTERED!

IT'S M.I.6! KILL THE BOY THEN RUN!

GULP!

NEXT EPISODE: WILL TIME RUN OUT FIRST FOR "BOBBIN" OR VORGEER?

The right buy right now.

The 1% drop in interest rates, means cheaper mortgages, so now is the time to buy Barratt. Barratt not only give you the best home you can buy – but help you buy it. We can help with the deposit, help with the mortgage and we may even buy your present home. **So buy Barratt now – before prices rise again.**

The Vikings, Flitwick

Tel: Margaret Field, Flitwick 5912

1 Bedroomed 'Mayfair Mews' showhouse with curtains and carpets and fitted wardrobes

£19,950

2 Bedroomed Town Houses

from **£22,950**

3 Bedroomed semi-detached Houses with Garage

from **£25,450**

2 Bedroomed detached Bungalows with Central Heating and Garage

from **£29,950**

2 Bedroom Town Houses with Garage

from **£21,995**

Hillgrounds, Kempston

Tel: Thomas Odd, Bedford 853457 (24 hours)

2 Bedroom semi-detached Houses with Garage

from **£22,495**

2 Bedroom detached Bungalows with Central Heating and Garage

from **£27,150**

3 Bedroom detached Houses with Central Heating and Garage

from **£34,300**

3 Bedroom detached Bungalows with Central Heating and Garage

from **£34,950**

4 Bedroom detached Houses with Central Heating and Double Garage

from **£39,750**

Prices indicated subject to houses remaining unsold. Sales Offices and Showhouses open 7 days a week 11 am-6pm.



Barratt

BARRATT DEVELOPMENTS (LUTON) LTD, P.O. Box 5, Luton, Beds. Tel: Luton 422771

Barratt the right buy right now

TODAY'S PRE-MATCH ENTERTAINMENT



WALLSPAN TARGET GOLF

Featuring the following teams

EVENING POST

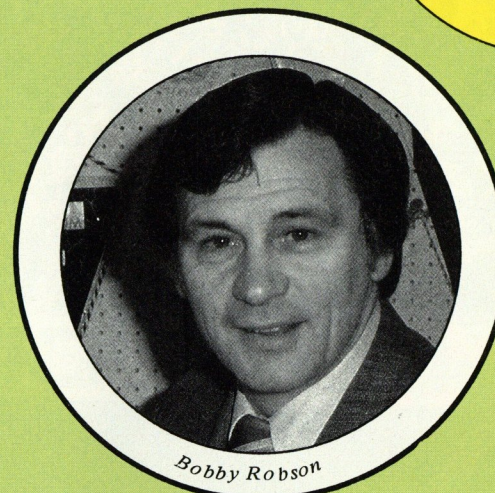
BOBBERS CLUB

STOCKWOOD PARK

CENTURY CLUB

TIME CAPSULES

By ROB HUGHES



Bobby Robson



Jack Charlton

Did you spot the earliest and most poignant contradiction of 1981? Jack Charlton, manager of Sheffield Wednesday, had just finished televising his belief that five years at one club is the limit of managerial duration when, bingo, Ipswich Town hit the top of the League on the night of Bobby Robson's 12th anniversary in charge.

Well, football being a "game of opinions", Charlton and Robson are entitled to their own ways of working. The link between the two is not, however, purely coincidental. Cast your mind back two years and you may recall Big Jack advising Bobby in large newspaper print "MOVE ON, ROBSON."

Charlton's message then was that he got out of Middlesbrough when he found the players not really listening to him any more. "He's a good lad, is Bob," Charlton had said, "he's had his moments at Ipswich and it seems to me he can either dismantle the side and bring in fresh faces – and that's damn hard – or he can leave." So much of football, argued Charlton, is repetition, that after four or five years it's better for a manager to move on, as he did from Middlesbrough; and now he says he probably will once he's achieved his aim of getting Sheffield back to Division One.

"The trouble is," says Jack, "you find yourself looking straight through a player and out the back. He's heard it all before."

Now when Charlton's advice was first proffered, Bobby Robson's side included Cooper, Burley, Mills, Osman, Brazil, Gates, Mariner, Wark, Beattie and Muhren (all in the squad now chasing the Championship). Brian Talbot, whom Robson was having difficulty getting through to, was about to leave, and Frans Thijssen was on his way to replace him.

There lay a significant change, for with Thijssen and Muhren at the helm, Robson's Ipswich was about to alter its style totally from a direct method of bypassing midfield with long balls, to one of controlling the ball and the play around the stealthy Dutchmen.

Robson is in effect his own chief coach, but he did make some concession to the change of face and voice theory by firing trainer Cyril Lea and promoting Bobby Ferguson as his assistant. And Ipswich, now arguably the best-balanced side in the League, is led on the field by Mick Mills, a man who apparently has not grown tired of listening to the same managerial tones throughout a dozen years.

It is perhaps a matter of degree. Robson changed when it became apparent that his perseverance was never quite going to push Ipswich above Liverpool and Nottingham Forest, but in keeping with his ways he changed gradually and without throwing a decade's youth policies overboard.

Yet no-one should deny that Jack Charlton, in raising Middlesbrough and now Wednesday (largely through a belief in youth) is anything but a successful manager. But his view that the wheels will only go round and round for the same leader for so long, is perhaps attuned mainly to his own personality. Maybe it depends how much a manager has to say to his players, and how many ways he has of saying it?

Charlton, as honest as the day is long, will probably always know only the simple and straightforward way of instilling the basics. But he has only to look back on his own playing career, on the stability created during Don Revie's 13½ years at Leeds United, to appreciate that the rule of thumb is not the same for every man.

Indeed, Sir Matt Busby's quarter-century at Old Trafford, Jock Stein's 13 years at Celtic, Bill Shankly's 15 at Liverpool, and Billy Nicholson's 35 years as player, then coach, then manager, at Spurs, are prime examples of the value of continuity and stability. Mind you, give or take a couple of years, the Clough-Taylor cycles of success seem to revolve around a seven-year-itch.

Like life itself, there are winners who thrive on working gradually, thoroughly, towards the peaks – and a few who arrive, create rapid triumphs and move impulsively towards the next.

WORLD LEADER



Rothmans King Size

THE GREATEST NAME IN CIGARETTES

the best tobacco money can buy



MIDDLE TAR As defined in H.M. Government Tables.
H.M. Government Health Departments' WARNING:
CIGARETTES CAN SERIOUSLY DAMAGE YOUR HEALTH

IN FOCUS



Our directors are not confined only to the Boardroom. They play an active part in helping to keep the club on a sound financial footing by sponsoring games at Kenilworth Road. The last home game against Grimsby was sponsored by local builders Richardson and Bottoms and one of our directors, Jim Richardson, is on the Board of that company. He is pictured (second left) with Mrs Richardson (left) and his family after being presented with a team picture to mark his sponsorship.

HAVE YOU EVER TASTED TIGER?

Tiger Bitter is now at Luton Town Football Club.

Tiger from Everards. A cool and satisfying way to quench a thirst.

Next time you go to the bar, ask for a Tiger.

You won't know what you've been missing until you try it.



EVERARDS FINE BEERS.
Top of the thirst division.

**BANK OF IRELAND
SPONSOR**

IRISH COMMUNITY DAY AT KENILWORTH ROAD SUNDAY 17th MAY 1981

CONTINUOUS ENTERTAINMENT 12 NOON-5 P.M.

featuring

**TWO OF IRELAND'S LEADING
GAELIC FOOTBALL TEAMS**

C O R K

v

R O S C O M M O N

other attractions include

GAELIC FOOTBALL

**VAUXHALL GAELS v HERTS COUNTY SELECTION
JUVENILE GAME**

WARWICKSHIRE v HERTFORDSHIRE

LONDON GIRLS PIPE BAND

IRISH MUSIC SINGING AND DANCING

ADMISSION £2.00 (Seating) £1.00 (Standing)

Tickets available from
**TICKET OFFICE, LUTON TOWN FC,
KENILWORTH ROAD, LUTON**

Cheques to be made payable to
IRISH COMMUNITY DAY

All postal applications to include SAE

WELCOME TO

BRISTOL CITY

When Bob Houghton left Sweden to manage Bristol City last October, he knew he faced a difficult task.

City had parted company with Alan Dicks after losing seven successive games and taking only three points since the start of the season. And, after being relegated from Division One at the end of last season, the club's directors were determined to attempt to halt the slide.

Houghton was manager of Malmö and had guided them to the League Championship four times and runners-up twice. They also did the double on three occasions by landing the Cup too.

It was during that spell that Malmö fought their way to the European Cup Final where they were beaten by Nottingham Forest — thanks to a goal scored by Trevor Francis in injury time added to the first-half.

Houghton's pedigree in Sweden obviously attracted the attention of City's directors and, when long serving Dicks left the club, the fair-haired Houghton jumped at the chance to return to England.

Houghton's first job was to raise £400,000 for City by selling Gerry Gow to Manchester City and Tom Ritchie to Sunderland. He invested only £80,000 of that by buying Malmö keeper Jan Møller. He also took midfielder Peter Aitken from

neighbours Bristol Rovers on a free transfer.

Bristol City returned to the First Division in 1975 and marked their promotion by building a magnificent new stand. But, like many other clubs, City have had to prune their overheads and Houghton has been forced to part with another four players to bring down the wage bill.

So Houghton now faces an extremely difficult task in trying to retain City's Second Division status.

Houghton obviously hopes that, with City ending their programme with games against some of the other struggling clubs, he may still be able to save them from relegation for the second successive season.

But a new manager takes time to settle and mould a consistent team and Houghton has already given the impression it will take him three years to re-build the team, because there is no money available for new players.

There was a blow for Houghton two weeks ago when defender David Rodgers broke his leg. Rodgers, whose only professional experience has been with City, has made almost 200 appearances for the Robins.

Previous manager Dicks paid City's record transfer fee when he persuaded Tony Fitzpatrick to move to England from St. Mirren for £235,000 in July 1979.

The departure of Ritchie — he scored over 70 goals for City — left the onus for finding the target on Kevin Mabbutt's shoulders. Another player whom City plucked from their own doorstep, Mabbutt can have a big say in whether the club manages to avoid relegation.

Full-back Gerry Sweeney is another player with Scottish connections. He moved to Ashton Gate from Morton after a spell with Celtic and is approaching the 300 mark for appearances in the first team.

His partner, Alan Hay is relatively inexperienced on the Football League scene. He joined City from Bolton after failing to break into their first team and still has only a handful of League games to his credit.

Midfield this afternoon could be occupied by Trevor Tainton, another local product with over 400 first team appearances behind him, Fitzpatrick and Peter Aitken.

For the record, we lost the corresponding game at Ashton Gate when we were beaten 2-1 on 7th October. Mike Saxby put the Town in front after 38 minutes, but City snatched the points through a Ritchie penalty (58 minutes) and a goal from Mabbutt (64 minutes).

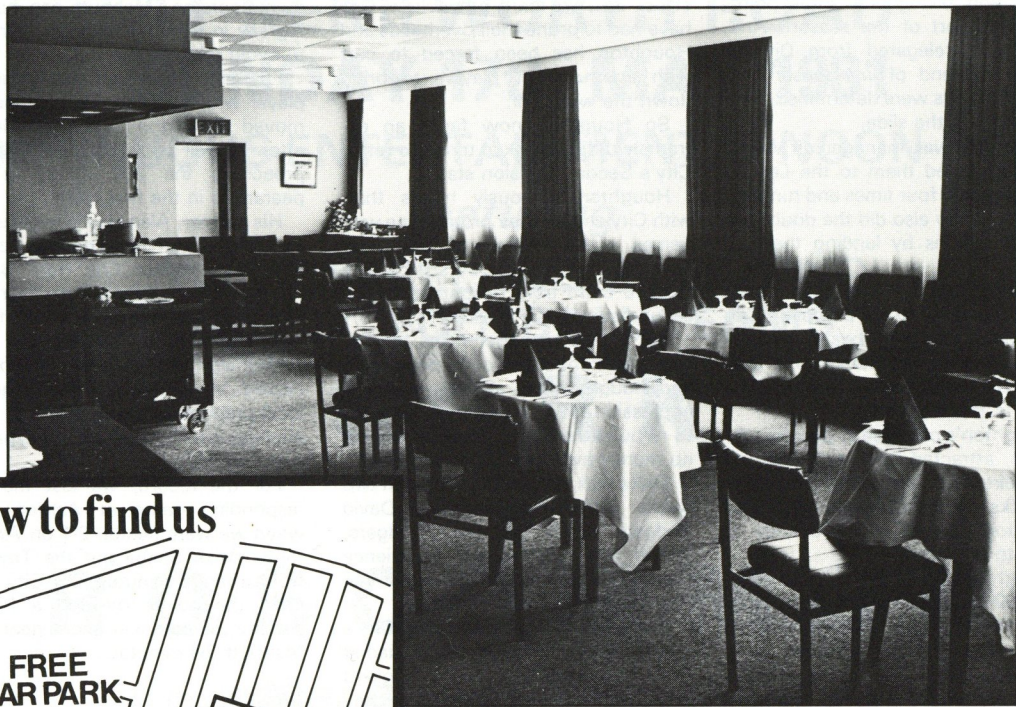
*BRISTOL CITY FC
Playing staff, season 1980-81*



Our Visitors

the Kenilworth Suite COMPLEX

NOW OPEN!
to all Supporters
& General Public
for Private Hire



How to find us



Approach through Main Car Park at top of Oak Rd. pass through gates under Railway Bridge enter through doors at top of steps. Complex situated on 1st floor.

Facilities available for:
**ANNIVERSARIES, RECEPTIONS,
CONFERENCES & PRIVATE PARTIES**

You name it — We do it!

Contact our catering manager:

Mr Clive Hustwitt

Telephone Luton 411622

Reserve Report

Fulham 2 Luton Town 0

The Town made a disastrous start by conceding two goals in the first 10 minutes, due mainly to poor defending by midfield players and bad covering by back defenders and we could have been another two goals down but for poor finishing by Fulham.

The second-half saw Luton take charge but fine efforts by Steve White, Paul Keys and Neil Madden were either blocked, saved or went wide. Our winning run in the Football Combination came to an end due to lack of concentration and application in the early periods of the game.

Team: Beesley, Johnson, Thomas, Brammer, Goodyear, Antic, Madden, Bunn, White, Fuccillo, Keys.

Luton Town 4 Hereford United 0

Luton opened the scoring in this Football Combination game after 10 minutes when Steve White slotted the ball past the keeper after a fine run and low cross by Frank Bunn. The Town, playing well on a difficult surface, knocked in a second goal just before the interval when Bunn challenged for a cross and the ball fell invitingly for Paul Keys to volley it into the net.

The beginning of the second-half arrived with a superb goal which was made by Wayne Turner, Lilly

Fuccillo and Raddy Antic before Bunn completed the move. After Alan Judge had made a fine save from a penalty, Steve White added the Town's fourth goal.

Team: Judge, Johnson, Turner, Antic, Saxby, Foote, Madden, Bunn, White, Fuccillo, Keys. *Sub:* Heath.

Orient 0 Luton Town 2

Luton started in promising fashion and good efforts from Raddy Antic and Wayne Turner were well saved. The Town controlled the game and had so much possession of the ball that the only fear was for Orient to sneak a goal on a quick break. In fact, two good saves by Alan Judge almost raised Orient's hopes of going in at half-time with the lead.

In the second-half, Luton pushed forward with determination and, after 60 minutes following a quick free kick taken by Neil Madden, and a good cross by Paul Keys, Mike Saxby beat the keeper with a header to give us a deserved lead. Clive Goodyear was carried off with badly damaged ankle ligaments with 10 minutes left and substitute Seamus Heath was pulled down in the area which allowed Frank Bunn to score from the penalty.

Team: Judge, Johnson, Turner, Madden, Saxby, Goodyear (Heath), Brammer, Bunn, Antic, Fuccillo, Keys.

FOR ALL
YOUR FLORAL ARRANGEMENTS
CONTACT

Inbloom



Flower Display Service

**45 Latimer Road
Luton**

**TELEPHONE:
LUTON 416054**

Luton News



**BEST SELLER
EVERY WEEK**

**All the best sports
news, jobs, cars,
houses and bargains**



Home fixtures in **Bold** Luton score first Name in **Bold** = Scorer * Figure = Number of Goals + Denotes substitute player * Own Goal

Date	Fixture	Att.	Res.	Pts.	Pos.	1	2	3	4	5	6	7	8	9	10	11	12
Aug. 16	West Ham United	27,933	2-1			Findlay	Stephens	Donaghy	Greulich	Saxby	Price	Hill	Stein	White +	Antic	Moss ²	West
Aug. 19	Watford	13,887	1-0		4	Findlay	Stephens	Donaghy	Greulich	Saxby	Price	Hill	Stein	Bunn ¹	Antic	Moss	West
Aug. 23	Derby County	11,025	1-0		4	Findlay	Stephens	Donaghy	Greulich	Saxby	Price	Hill	Stein	Bunn ¹	Antic	Moss	Aizlewood
Aug. 27	Reading (LC 2-1st Leg)	5,778	2-1		4	Findlay	Stephens	Donaghy	Greulich	Saxby	Price	Hill	Stein	Bunn	Antic	Moss ¹	White
Aug. 30	Newcastle United	13,164	1-2		4	Findlay	Stephens	Donaghy	Greulich	Saxby +	Price	Hill	Stein	Bunn	Antic	Moss ¹	Aizlewood
Sept. 2	Reading (LC 2-2nd Leg)	5,707	1-1		5	Findlay	Stephens	Donaghy	Greulich	Saxby ¹	Price	Hill	Stein	Bunn ¹	Antic	Heath +	Ingram
Sept. 6	Wrexham	8,244	1-1		5	Findlay	Stephens	Donaghy	Greulich	Saxby	Price	Hill	Stein	Bunn ¹	Antic	Moss	West
Sept. 13	Blackburn Rovers	9,078	0-3		18	Findlay	Stephens	Donaghy	Greulich	Saxby	Price	Hill	Stein	Ingram	Antic	Moss +	White
Sept. 20	Orient	10,265	2-1		7	Findlay	Stephens	Donaghy	Greulich	Saxby	Price	Hill	Stein	West	Antic	Moss	—
Sept. 23	Manchester City (LC 3)	9,044	0-0		8	Findlay	Stephens	Donaghy	Greulich	Saxby	Price	Hill	Stein	West	Antic	Moss	—
Sept. 27	Grimsby Town	8,736	0-1		8	Findlay	Stephens	Donaghy	Greulich	Saxby	Price	Hill	Stein	Harrow	Antic	Moss	—
Oct. 4	Notts County	7,014	1-2		8	Findlay	Stephens	Donaghy	Greulich	Saxby ¹	Price	Hill	Stein	Harrow	Antic	Moss	—
Oct. 7	Bristol City	8,014	0-1		8	Findlay	Stephens	Donaghy	Greulich	Saxby	Price	Hill	Stein	Harrow	Antic	Moss	—
Oct. 11	Preston North End	5,620	0-1		9	Findlay	Stephens	Donaghy	Greulich	Saxby	Price	Hill	Stein	Harrow	Antic	Moss	—
Oct. 18	Shrewsbury Town	8,402	2-2		10	Findlay	Stephens	Donaghy	Greulich	Goodyear	Price	Hill	Stein	White	Antic	Moss	Aizlewood
Oct. 21	Swansea City	7,219	3-1		12	Findlay	Stephens	Donaghy	Greulich	Goodyear	Price	Hill	Stein	White	Antic	Moss ¹	—
Oct. 25	Sheffield Wednesday	12,092	3-0		14	Judge	Stephens	Donaghy	Greulich	Goodyear	Price	Hill	Stein	White	Antic	Moss ¹	—
Nov. 1	Queens Park Rangers	10,082	2-3		14	Judge	Stephens	Donaghy	Greulich	Goodyear	Price	Hill	Stein	White	Antic	Moss ¹	—
Nov. 8	Watford	16,939	1-0		16	Findlay	Stephens	Donaghy	Greulich	Saxby	Price	Hill	Stein	White	Antic	Moss ¹	—
Nov. 15	West Ham United	17,031	3-2		18	Findlay	Stephens	Donaghy	Greulich	Saxby	Price	Hill	Stein	White	Antic	Moss ¹	—
Nov. 22	Cardiff City (1)	6,064	0-1		18	Findlay	Stephens	Donaghy	Greulich	Saxby	Price	Hill	Stein	White	Antic	Moss ¹	—
Nov. 29	Bolton Wanderers	8,300	2-2		19	Findlay	Stephens	Donaghy	Greulich	Saxby	Price	Hill	Stein	White	Antic	Moss ¹	—
Dec. 6	Oldham Athletic	4,720	0-0		20	Findlay	Stephens +	Donaghy	Greulich	Saxby	Price	Hill	Stein	White	Antic	Moss ²	—
Dec. 13	Preston North End (2)	7,874	4-2		22	Findlay	Stephens	Donaghy	Fucillo ¹	Saxby +	Price	Hill	Stein	White	Antic	Moss	—
Dec. 19	Shrewsbury Town	4,521	1-0		24	Findlay	Stephens	Donaghy	Greulich	Saxby	Price	Hill	Stein	White	Antic	Moss	—
Dec. 26	Chelsea	16,006	2-0		26	Findlay	Stephens	Donaghy	Greulich	Saxby	Price	Hill	Stein	White	Antic	Moss	—
Dec. 27	Bristol Rovers	7,010	4-2		28	Findlay	Stephens	Donaghy	Greulich	West	Price	Hill	Stein	White	Antic	Moss	—
Jan. 3	Orient FA Cup 3	9,891	3-1		29	Findlay	Stephens	Donaghy	Greulich	Saxby	Price	Hill	Stein	White	Antic	Moss	—
Jan. 10	Cardiff City	9,013	2-2		29	Findlay	Stephens	Donaghy	Greulich	Saxby	Price	Hill	Stein	White	Antic	Moss	—
Jan. 17	Newcastle United	10,774	0-1		29	Findlay	Stephens	Donaghy	Greulich	West	Price	Hill	Stein	White	Antic	Moss	—
Jan. 24	Newcastle United FA Cup 4	29,202	1-2		30	Findlay	Stephens	Donaghy	Greulich	West	Price	Hill	Stein	White	Antic	Moss	Fucillo
Jan. 31	Derby County	16,479	2-2		30	Findlay	Stephens	Donaghy	Greulich	West	Price	Hill	Stein	White	Antic	Moss	—
Feb. 7	Blackburn Rovers	9,350	3-1		32	Findlay	Stephens	Donaghy	Greulich	West	Price	Hill	Stein	White	Antic	Moss	—
Feb. 21	Grimsby Town	9,217	0-2		33	Findlay	Stephens	Donaghy	Greulich	West	Price	Hill	Stein	White	Antic	Moss	—
Mar. 1	Orient	8,074	0-0		33	Findlay	Stephens	Donaghy	Greulich	Saxby	Price	Hill	Stein	White	Antic	Moss	—
Mar. 7	Notts County (6)	8,075	1-0		35	Findlay	Stephens	Donaghy	Greulich	Saxby	Price	Hill	Stein	White	Antic	Moss	—
Mar. 14	Bristol City (LCF)																
Mar. 21	Swansea City																
Mar. 28	Cambridge United																
Apr. 4	Sheffield Wednesday																
Apr. 11	Queens Park Rangers (SF)																
Apr. 17	Bristol Rovers																
Apr. 18	Chelsea																
Apr. 21																	
Apr. 25	Oldham Athletic																
May 2	Bolton Wanderers																
May 9	F.A. Cup Final																

© Copyright of The Football League Ltd.

FOOTBALL COMBINATION FIXTURES 1980-81

Date	Fixture	Home	Away	Goal
Aug. 16	Chelsea	West Ham Utd	Notts County	32 16
Aug. 19	Southampton	Sheffield Wed	Sheffield Wed	32 12
Aug. 23	Derby County	Grimsby Town	Blackburn Rovers	33 8
Aug. 27	Reading	Derby County	Swansea City	33 7
Aug. 30	Newcastle United	Luton Town	Q.P.R.	32 10
Sept. 6	Wrexham	Cardiff City	Cardiff City	33 8
Sept. 13	Blackburn Rovers	Cardiff City	Cardiff City	33 7
Sept. 20	Orient	Cardiff City	Cardiff City	33 7
Sept. 23	Manchester City	Cardiff City	Cardiff City	33 7
Sept. 27	Grimsby Town	Cardiff City	Cardiff City	33 7
Oct. 4	Notts County	Cardiff City	Cardiff City	33 7
Oct. 7	Bristol City	Cardiff City	Cardiff City	33 7
Oct. 11	Preston North End	Cardiff City	Cardiff City	33 7
Oct. 18	Shrewsbury Town	Cardiff City	Cardiff City	33 7
Oct. 21	Swansea City	Cardiff City	Cardiff City	33 7
Oct. 25	Sheffield Wednesday	Cardiff City	Cardiff City	33 7
Nov. 1	Queens Park Rangers	Cardiff City	Cardiff City	33 7
Nov. 8	Watford	Cardiff City	Cardiff City	33 7
Nov. 15	West Ham United	Cardiff City	Cardiff City	33 7
Nov. 22	Cardiff City (1)	Cardiff City	Cardiff City	33 7
Nov. 29	Bolton Wanderers	Cardiff City	Cardiff City	33 7
Dec. 6	Oldham Athletic	Cardiff City	Cardiff City	33 7
Dec. 13	Preston North End (2)	Cardiff City	Cardiff City	33 7
Dec. 19	Shrewsbury Town	Cardiff City	Cardiff City	33 7
Dec. 26	Chelsea	Cardiff City	Cardiff City	33 7
Dec. 27	Bristol Rovers	Cardiff City	Cardiff City	33 7
Jan. 3	Orient FA Cup 3	Cardiff City	Cardiff City	33 7
Jan. 10	Cardiff City	Cardiff City	Cardiff City	33 7
Jan. 17	Newcastle United	Cardiff City	Cardiff City	33 7
Jan. 24	Newcastle United FA Cup 4	Cardiff City	Cardiff City	33 7
Jan. 31	Derby County	Cardiff City	Cardiff City	33 7
Feb. 7	Blackburn Rovers	Cardiff City	Cardiff City	33 7
Feb. 21	Grimsby Town	Cardiff City	Cardiff City	33 7
Mar. 1	Orient	Cardiff City	Cardiff City	33 7
Mar. 7	Notts County (6)	Cardiff City	Cardiff City	33 7
Mar. 14	Bristol City (LCF)	Cardiff City	Cardiff City	33 7
Mar. 21	Swansea City	Cardiff City	Cardiff City	33 7
Mar. 28	Cambridge United	Cardiff City	Cardiff City	33 7
Apr. 4	Sheffield Wednesday	Cardiff City	Cardiff City	33 7
Apr. 11	Queens Park Rangers (SF)	Cardiff City	Cardiff City	33 7
Apr. 17	Bristol Rovers	Cardiff City	Cardiff City	33 7
Apr. 18	Chelsea	Cardiff City	Cardiff City	33 7
Apr. 21		Cardiff City	Cardiff City	33 7
Apr. 25	Oldham Athletic	Cardiff City	Cardiff City	33 7
May 2	Bolton Wanderers	Cardiff City	Cardiff City	33 7
May 9	F.A. Cup Final	Cardiff City	Cardiff City	33 7

LEAGUE DIVISION TWO TABLE 1980-81

Pos.	Team	P	W	D	L	F	A	Goal
1	West Ham Utd	32	16	0	1	46	15	51
2	Notts County	32	12	6	4	37	18	41
3	Sheffield Wed	32	12	4	6	37	18	41
4	Grimsby Town	33	8	7	8	37	21	37
5	Blackburn Rovers	33	8	7	8	37	21	37
6	Derby County	33	7	6	9	37	21	37
7	Swansea City	33	7	6	9	37	21	37
8	Luton Town	32	10	2	6	47	20	37
9	Q.P.R.	32	7	5	4	27	16	35
10	Cardiff City	33	8	6	3	37	11	4
11	Cardiff City	33	8	6	3	37	11	4
12	Cardiff City	33	8	6	3	37	11	4
13	Cardiff City	33	8	6	3	37	11	4
14	Cardiff City	33	8	6	3	37	11	4
15	Cardiff City	33	8	6	3	37	11	4
16	Cardiff City	33	8	6	3	37	11	4
17	Cardiff City	33	8	6	3	37	11	4
18	Cardiff City	33	8	6	3	37	11	4
19	Cardiff City	33	8	6	3	37	11	4
20	Cardiff City	33	8	6	3	37	11	4
21	Cardiff City	33	8	6	3	37	11	4
22	Cardiff City	33	8	6	3	37	11	4
23	Cardiff City	33	8	6	3	37	11	4
24	Cardiff City	33	8	6	3	37	11	4
25	Cardiff City	33	8	6	3	37	11	4
26	Cardiff City	33	8	6	3	37	11	4
27	Cardiff City	33	8	6	3	37	11	4
28	Cardiff City	33	8	6	3	37	11	4
29	Cardiff City	33	8	6	3	37	11	4
30	Cardiff City	33	8	6	3	37	11	4
31	Cardiff City	33	8	6	3	37	11	4
32	Cardiff City	33	8	6	3	37	11	4
33	Cardiff City	33	8	6	3	37	11	4
34	Cardiff City	33	8	6	3	37	11	4
35	Cardiff City	33	8	6	3	37	11	4

FOOTBALL COMBINATION 1980-81

Date	Fixture	Home	Away	Goal
Aug. 16	Chelsea	West Ham Utd	Notts County	32 16
Aug. 19	Southampton	Sheffield Wed	Sheffield Wed	32 12
Aug. 23	Derby County	Grimsby Town	Blackburn Rovers	33 8
Aug. 27	Reading	Derby County	Swansea City	33 7
Aug. 30	Newcastle United	Luton Town	Q.P.R.	32 10
Sept. 6	Wrexham	Cardiff City	Cardiff City	33 8
Sept. 13	Blackburn Rovers	Cardiff City	Cardiff City	33 7
Sept. 20	Orient	Cardiff City	Cardiff City	33 7
Sept. 23	Manchester City	Cardiff City	Cardiff City	33 7
Sept. 27	Grimsby Town	Cardiff City	Cardiff City	33 7
Oct. 4	Notts County	Cardiff City	Cardiff City	33 7
Oct. 7	Bristol City	Cardiff City	Cardiff City	33 7
Oct. 11	Preston North End	Cardiff City	Cardiff City	33 7
Oct. 18	Shrewsbury Town	Cardiff City	Cardiff City	33 7
Oct. 21	Swansea City	Cardiff City	Cardiff City	33 7
Oct. 25	Sheffield Wednesday	Cardiff City	Cardiff City	33 7
Nov. 1	Queens Park Rangers	Cardiff City	Cardiff City	33 7
Nov. 8	Watford	Cardiff City	Cardiff City	33 7
Nov. 15	West Ham United	Cardiff City	Cardiff City	33 7
Nov. 22	Cardiff City (1)	Cardiff City	Cardiff City	33 7
Nov. 29	Bolton Wanderers	Cardiff City	Cardiff City	33 7

COMMERCIAL COMMENT

After the huge success of our Christmas draw, we are now planning a Derby draw — and there are some exciting prizes to be won. The lucky winners who draw a horse will share £2,000 and will be notified of their win well before the Derby is run.

The first horse past the post will take the first prize of £1,000; the second winner receives £250; the third £150; and fourth £100. Each horse which comes under starters orders wins £25. We attempt to provide an attractive gamble for our agents and punters and, with tickets priced at only 25p, this can't be a bad one. It also provides an escape from the recession with the lucky winners able to spend their winnings on perhaps a few luxuries.

Books containing 22 tickets will soon be available from the Pools Office and, when you have sold 20 tickets, there are two free tickets for your personal use in lieu of commission. Counterfoils and £5 must be handed in at the Pools Office by 23rd May and the draw for horses will be made on 25th May.

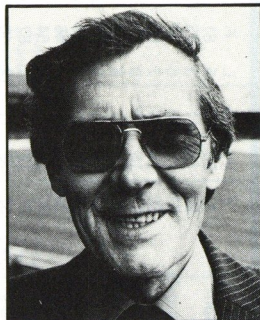
The response by parents of our Junior Hatters is to be greatly admired. With the help of a mailing shot, the Pools Office contacted all parents to ascertain whether they were prepared to swell our army of lot-

tery agents by selling our Magnificent Four on a week-to-week basis.

We were surprised by the response, and our sales executives have been making evening visits to all areas. The result was that the Magnificent Four now accounts for our biggest turnover and, because of this additional revenue, we look set to reach our estimated donation of £250,000 during the year ending 31st May.

On current figures, we think we will be able to increase that the following year.

With lotteries now playing a bigger than ever role in the successful running of soccer clubs throughout Britain, it is comforting to realise that our agents and their customers are playing their part with Luton.



MIKE HARDWICKE *Commercial Manager*

Happy Winner



June Harrison and her husband Les have received a nice bonus as they prepare to move into a new house during the summer. June predicted Luton would lose at home to Grimsby in the Wallspan sponsored competition — and £500 worth of Wallspan fitted bedroom furniture.

June and Les are keen Luton supporters and are season ticket holders, and Wallspan agreed to allow them delay spending their £500 voucher until they move into their new home. Also in the picture is Wallspan sales director Chris Mason and our advertising manager Mike Beevor.

Century Club

Our welcome today goes to Bristol City, whom we have not seen at Kenilworth Road for some time, but we look forward to a good game.

The Sunday soccer experiment at Brisbane Road for our game with Orient was quite interesting. As usual, several of us from the Century Club were there supporting our team. There were mixed feelings on the matter of Sunday Football, as there were from our friends in the Orient Vice-Presidents Club. The one thing we were all agreed on was that Saturday without soccer is like Starsky without Hutch!

We much appreciated the hospitality shown to us at Orient, as usual — they are truly our Friends in Football.

Unfortunately, we cannot give you the result of our Century Club v Players Quiz evening. But it will be included in the next match day magazine.

Today, don't forget to vote for the Century Club Player of the Year, and to those of you wishing to attend the Annual Ball, please let Catherine Ball have your application form and cheque.

Advance notice is also given that your letters of invitation to rejoin the Century Club will be with you shortly, and it is important that these are returned promptly.

WHITBREAD



TROPHY BITTER

LUTON SPORTS PRESS LTD



THE LOTTERY TICKET SPECIALISTS

welcome

BRISTOL CITY

Another prospective customer



LUTON 28757

Leisure

The Hatters Community Arena continues to give local youngsters valuable leisure time. And news of special importance to the area's girls involves an Easter Netball Tournament which is scheduled for 22nd April for under-11s and under-15s. The cost is only £2 per team.

Places are filling up quickly for the Easter *Evening Post-Echo* three-day football coaching course. Only the first 100 boys at Stopsley and 60 at Leagrave can be accepted on a first-come first-served basis. The course is open to all boys between 7 and 14 and starts on 22nd April before finishing on 24th April. The cost is £3.50.

A three-day hockey coaching course has been arranged between 21st and 23rd April. Top internationals will be on the coaching staff and the cost is only £2.75 for the three days.

If you are under 12 and have six friends, why not form a cricket team and enter the Luton Under-12 seven-a-side cricket championships at Luton Regional Sports Centre on 13th April. The Final will be played before the Luton v Bristol Rovers match on 18th April. Entrance is free.

Further details of all courses can be obtained from Mike Iaco, Marsh House Centre, Bramingham Road, Luton (56879).

Sponsorship

Since the Joe Payne Lounge was opened in November 1979, most of our home games have been sponsored. But we are still working towards even more success in that field and, this afternoon, we have invited next season's potential clients to join us. Please give them a real Hatters' welcome.

These potential supporters will enjoy the facilities offered to matchday sponsors. They will participate in a sherry reception, be taken on a tour of the ground before having lunch. They will watch the game from specially reserved seats and, after the match, have the opportunity of meeting the players from both teams.

Sponsorship is very important to Luton and we are grateful to those companies who have previously supported us. It also provides much needed additional income to support the cash taken at the turnstiles and, without the financial support of these other activities, the club could not operate at its current level.

If you would like to be a guest of a sponsor next season, write to our advertising manager Mike Beevor, telling him why. While it may not be possible to invite everyone who replies, we hope that some will be lucky.

Remember, we value our sponsors who can help to promote their own public relations by entertaining their guests at one of our home games.

WHO'S PLAYING



LUTON TOWN

TEAM CHANGES

- 1 JAKE FINDLAY
- 2 KIRK STEPHENS
- 3 MAL DONAGHY
- 4 TONY GREALISH
- 5 MIKE SAXBY
- 6 PAUL PRICE
- 7 RICKY HILL
- 8 BRIAN STEIN
- 9 STEVE WHITE
- 10 RADDY ANTIC
- 11 DAVID MOSS
- 12

BRISTOL CITY

TEAM CHANGES

- 1 JAN MOLLER
- 2 PAUL STEVENS
- 3 ALAN HAY
- 4 PETER AITKEN
- 5 JULIAN MARSHALL
- 6 ALAN NICHOLLS
- 7 TREVOR TAINTON
- 8 JIMMY MANN
- 9 KEVIN MABBUTT
- 10 HOWARD PRITCHARD
- 11 CLIVE WHITEHEAD
- 12

HALF-TIME SCORECHECK

Liverpool v West Ham United
 Arsenal v Birmingham City
 Aston Villa v Manchester Utd
 Coventry v Leicester
 Crystal Palace v Sunderland
 Everton v Leeds United
 Ipswich v Tottenham
 Manchester City v W.B.A.
 Nott'm Forest v Brighton
 Stoke City v Southampton
 Wolverhampton v Norwich
 Blackburn v Sheffield Wed.

Bolton v Shrewsbury
 Bristol Rov. v Chelsea
 Derby v Swansea
 Grimsby v Notts County
 Newcastle v Preston
 Orient v Q.P.R.
 Wrexham v Watford
 Barnsley v Colchester
 Blackpool v Plymouth
 Brentford v Carlisle
 Huddersfield v Exeter
 Rotherham v Burnley



OFFICIAL
19
 TOKEN

Saturday 14th March 1981

OUR NEXT HOME LEAGUE MATCH
 LEAGUE DIVISION TWO
Saturday 28th March 1981
CAMBRIDGE UNITED
 Kick-off 3.00 p.m.

Tickets available from the Ticket Office

WHISTLE AND FLAGS

REFEREE:
 L. F. BURDEN
 Dorset
 LINESMEN:
 I. J. BORRETT
 (Red Flag)
 C. GRADY
 (Yellow Flag)

