



OFFICIAL
MATCHDAY
PROGRAMME

FOOTBALL LEAGUE DIVISION TWO
Saturday 12th April, 1980
LUTON TOWN v SHREWSBURY TOWN

PRICE
30p

LUTON TOWN



INSIDE TODAY:
David's Diary
The Italian Job
Today's opponents
In Focus

TODAY'S MATCH SPONSOR
OBC (SOUTHERN)/THORN HEATING

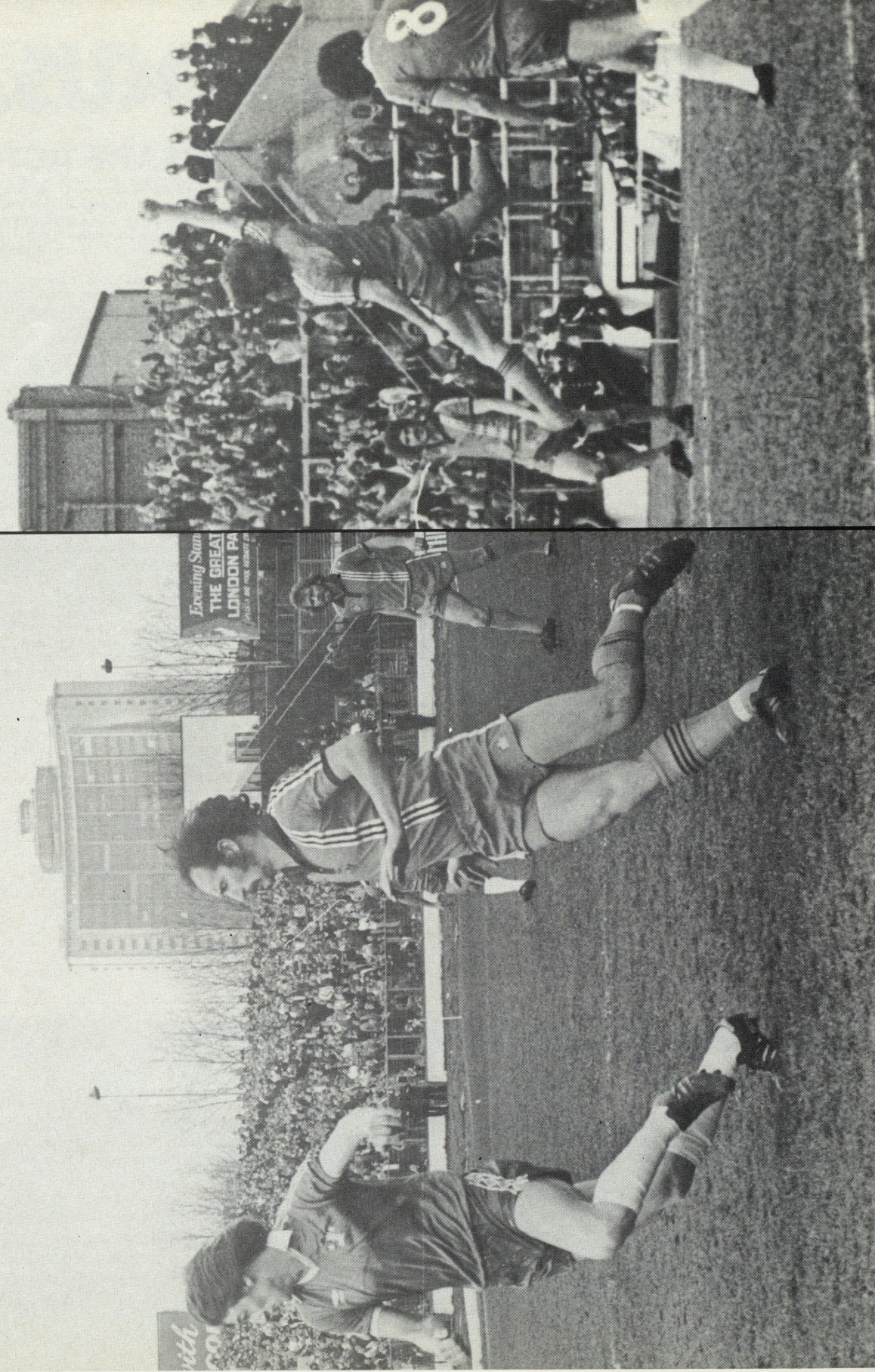


ACTION

Wasn't it a superb Easter? Five points from three games left David Pleat and his boys bang on course for a hectic finale to an exciting season. Our Easter started with the 4-1 thrashing of Charlton at the Valley before Bob Hatton sent Watford home pointless with this goal at Kenilworth Road a week ago today.

Pictures: Colin Bowerman and Keith Dobney, Evening Post-Echo

Hatton moves in with a challenge in the 1-1 draw at Chelsea on Monday.



Paddy Grealish can't contain his delight at putting the Town ahead against Chelsea.

IN FOCUS...IN FOCUS...

GROUND IMPROVEMENTS — NECESSARY ACTION

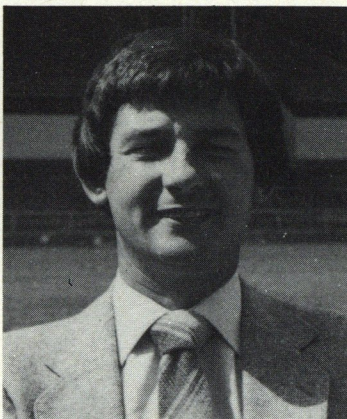
The Safety of Sports Grounds Act is a subject which has caused First and Second Division Football League clubs to spend money on ground improvements. At the start of next season, all Second Division clubs will have to be in possession of a safety certificate to enable them to play League football. And the implications are quite clear — no certificate, no play. This week, Luton's chief executive John Smith uses the columns of In Focus to explain to supporters how the act affects the club and the alterations that are proposed.

"When you arrive at Kenilworth Road at the start of next season, you will notice an alteration in the layout of the stadium and I suggest you all watch the local Press carefully to ensure you don't get lost when you visit us for the first game of a new season next August.

"How do the alterations affect you? The Kenilworth Road end terraces are being split into three sections. Facing the pitch, the left hand side will be reserved for visiting supporters and will hold 3,500 people. New entrances and turnstiles will be erected on the current coach park and fans will make their way onto the terraces via an overhead walkway to avoid them coming into contact with other supporters.

"The remaining two sections will house home and casual supporters with entrances under the terraces under the existing arrangements. For Cup ties and some of the bigger League games, this will also assist with better crowd control.

"Under the Safety of Sports Grounds Act, movement from one enclosure to another is not allowed, and visiting supporters would possibly be allocated places on an additional part of the Kenilworth Road terraces for Cup



JOHN SMITH

fies, if necessary.

"There will also be work carried out in the Main Stand Enclosure where barriers will be renewed, but it will be significant that Luton supporters using this part of the ground next season will not mix with visiting fans at the Kenilworth Road end when they are leaving the ground. They pass under the walkway.

"The Oak Road terraces will also be divided into three sections. Facing the pitch, entry to the right hand side will be from Maple Road, and the centre area will be entered from Oak Road. The side situated on the left will have access from the entrance nearest the Bobbers Stand. There is a possibility that

the centre enclosure in this part of the stadium may be allocated to members' ticket holders although a final decision has yet to be made and the implication of that is simple — buy your members' ticket for that part of the ground now.

"There is also a possibility that part of the Oak Road end may be reserved for children under the scheme announced in last week's magazine for the Watford match. Again, a decision still has to be finalised.

"Under Safety of Sports Grounds Act legislation, we have to start work on major improvements to the main stand. For example we have to supply a sufficient number of exits to ensure everyone can leave the ground within two and a half minutes! To achieve that, we intend to widen an existing exit and provide two additional exit staircases, one at the Maple Road end and one near the players' and officials' entrance. The tunnel under the main stand will not be in use except for toilet facilities.

"In addition, pitch perimeter fencing will be replaced with new non-climbable fencing.

"Although the proposed relief road running to the side of the stadium naturally creates a good deal of uncertainty, the Act does require us to hold a certificate prior to next season. We therefore need to commence work as soon as possible.

"The capacity of the stadium will be reduced by about 1,600 to approximately 21,000. The total cost will be approximately £350,000 against which we can expect a grant of about £150,000 from the Football Grounds Improvement Trust. The alterations will not only provide us with a certificate to play Football League games next season, it will assist in the movement of supporters, and tidy up the stadium considerably."

TODAY'S REFEREE

GREY, ALFRED W. (Gorleston). Commenced refereeing in Norfolk in 1960 and via the Football Combination qualified for the Football League full list in 1972. Was an FA Cup final, European Cup semi-final linesman and an FA Amateur Cup official in 1972. Refereed the FA Youth Cup Final in 1977 and the FA Trophy Final in 1978. Appointed to the FIFA panel 1977.

ARE YOU ON THE ITALIAN JOB?

(see page 11)

LUTON TOWN F.C.



72 Kenilworth Road
Luton
Tel: Luton 411622

President: T. Hodgson
Deputy President: J. A. C. Bain
Honorary Vice-Presidents: Lord Hill,
Sir Reginald Pearson OBE, J. B. Brent,
B. England, C. Holloway, L. Leppington,
Eric Morecambe OBE, E. Waller
Directors: Denis Mortimer (Chairman),
R. L. Banks, D. J. Evans,
E. S. Pearson, H. Richardson,
R. J. Smith, J. R. Yates

Chief Executive: J. Smith
Team Manager: D. Pleat
Assistant Team Manager: K. Gutteridge
Coaches: D. Coates, J. Moore
Club Secretary: J. Wilkinson
Assistant Secretary: W. Butler
Physiotherapist: J. Sheridan
Commercial Manager: M. Hardwicke
Project and Advertising Executive:
M. Beevor

Catering Manager: C. Hustwitt
Official Club Photographer: Gareth Owen
Solicitors: Lathom and Co.,
King Street, Luton
Auditors: Hillier, Hills, Frary and Co.
Medical Officer: W. A. C. Berry MBBS
Match-Day Magazine published by
Luton Town FC
Designed and printed by
Hemmings & Capey (Leicester) Ltd.

Programme deadlines have meant that my notes this afternoon were penned before the Easter programme, and we went into that hectic period knowing that the results of the three games could have decided our destiny for next season. Nothing less than five points out of six would have been enough.

There can be no doubt that our home form has let us down. In the majority of drawn games we have been the better side but failed to translate that supremacy into goals. Even so, the team has grown better together and the experience will have done the players a power of good.

The standard and quality of our football has been admired and our consistency has kept us in the top group all season during a period when three of our players, Paul Price, Tony Grealish and Mal Donaghy, joined full international squads. We believe we have other players with ability to reach full

DAVID'S DIARY

international level. But they can do that only by maintaining consistency and learning from mistakes. David Moss and Kirk Stephens were both nominated in the PFA Second Division side and fully merited their inclusion.

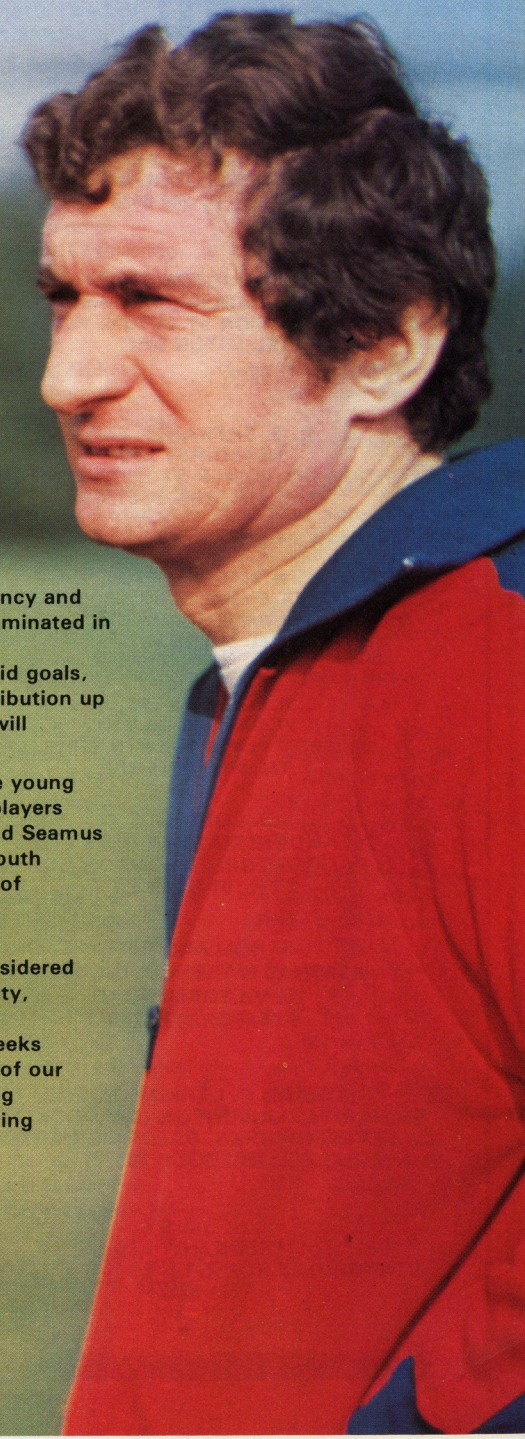
It has been unfortunate that David Moss, having scored some splendid goals, has been forced to miss games after a crude challenge. But his contribution up front, along with Bob Hatton and Brian Stein, has been good and it will continue to improve as we work more together.

At youth and reserve level, outstanding progress has been made. The young reserves have consolidated in the Football Combination and several players could come into the League side and hold their own. Neil Madden and Seamus Heath received youth honours, and our first season in the Midland Youth League has proved successful. We are now looking at the possibility of entering the South East Counties League to ensure the best possible competition at all levels for our players.

Recently, we have looked at many promising boys who could be considered apprentice material. They come into the game, if given the opportunity, knowing that only their total commitment would be good enough.

This afternoon, we welcome a side whose performances in recent weeks have been a credit to their club. As a player with both clubs, I know of our similarities. They have had to sell and make careful progress, ensuring that the books balance. They have never fallen into the trap of spending sums of money they can hardly afford while chasing success. Shrewsbury's performance last season as Third Division Champions shows what can be achieved by good guidance from the Board and sound management.

Let's hope today's game can make up for some of those niggling dropped home points.



Vice Presidents of Luton Town FC

A. G. BERRY ESQ.
BRENGREEN HOLDINGS LTD.
61 CHEAPSIDE LONDON EC2V 6AX
TEL: 01-248 6026

C. J. HUDSON ESQ.
E. W. HUDSON HOLDINGS LTD.
6 UNION ST. LUTON
TEL: LUTON 30511

R. S. SAFRANEK ESQ.
NEAHURST LTD.
LONDON RD. LOWER STONDON, HITCHIN
TEL: HITCHIN 94-813545

N. S. FOOKES ESQ.
N. S. FOOKES, ENGINEERING SERVICES LTD.
45 LATIMER ROAD, LUTON
TEL: LUTON 26139

R. W. UNWIN ESQ.
R. W. UNWIN & CO. LTD.
PROSPECT PLACE, WELWYN HERTS.
TEL: WELWYN 6441

B. COLE ESQ.
CLEANDUSTRIAL SERVICES LTD.
PALMERS GREEN LONDON N13
TEL: 01-882 4626

G. HOLLAND ESQ.
KESTRAL WAREHOUSING LTD.
116 VICTORIA ROAD
ROMFORD, ESSEX

RICHARD C. LARKINSON ESQ.
RICHARD C. LARKINSON (BALDOCK) LTD.
STATION WORKS, BALDOCK, HERTS.
TEL: BALDOCK 893158

S. GOLBY
FREDK RAY LTD.
STANBRIDGE ROAD, LEIGHTON BUZZARD
TEL: 372241

JOHN'S JOTTINGS



Today we welcome our visitors from Gay Meadow on what is their first visit to Kenilworth Road since 20th September, 1969, when we fought a 2-2 draw with Alan Slough having the distinction of scoring for both sides. The other scorers were Collins for Luton and Roberts for Shrewsbury. For those interested, the teams that day were: LUTON: Davie, Dougan, Bannister, Keen, Nicholl, Slough, Collins, MacDonald, Tees, Allen, French. SHREWSBURY: Phillips, Gregory, Fellows, Moore, Wood, Pontney, Roberts, Bridgwood, Hankin, Hawkins, Meredith.

Formed in 1886, it was some years before they turned professional. The exact date is not known, but believed to be about 1905. Elected to the Football League in 1950, Division Three (North), and were placed in Division Three (South) the following season. Among the honours they have gained are runners-up in the Fourth Division 1974-75 and champions of the Third Division in 1978-79. They have also won the Welsh Cup four times and are the current holders.

Arthur Rowley holds their record scorer title for a season with 38 goals in Division Four, 1958-59 and, while with Shrewsbury, he completed his scoring record of 434 goals. In January 1973, Shrewsbury received £90,000 from Manchester United for the sale of Jim Holton — a record for the club. Ten men have sat in the managerial chair since the war, with Harry Gregg, Maurice Evans and Alan Durban amongst them.

At the time of writing these notes, our results over the Easter period are not known, but we hope we are still in contention for one of the top three places in the Division. Our visitors have caused some upsets with the leading group of clubs and we hope we are in top form today to see they don't do anything like that to us. We already have the advantage of winning the first match at Gay Meadow this season, when goals from Brian Stein and Bob Hatton gave us a 2-1 victory.

I would like to apologise to the committee of the South Beds Sunday League and the Chiltern Youth League for having to postpone their Cup finals at Kenilworth Road last month. The condition of the pitch was obviously the cause, and supporters who like to watch these matches will be pleased to know they have been arranged for the 1st and 2nd May respectively.

I like to have these games here, as it gives me a chance to meet people involved in local football, and also to give Luton Town a good name throughout the county. Relationships between us and local football is better now than it has been for many years, and I will do my utmost to keep it that way.

John Wilkinson

ARE YOU ON THE
ITALIAN JOB?
(see page 11)

COMMERCIAL CORNER

SUMMER'S ON THE WAY



We don't sell the girls, but we do sell the tee shirts they are wearing — and that's only one of dozens of lines stocked in our souvenir kiosks and in the pools office.

Sizes range from 22" chest to 44" maximum, in 2" increments and the shirts are priced £2.50 to £2.99. Smart and sporty, the club's crest is embossed in orange and blue.

This latest addition to our stock is on sale inside the ground this afternoon and in the pools office during the week when sales staff will show you any of our dozens of other items.

Commercial manager Mike Hardwicke reckons he can fit any one from Twigg to an elephant.

LATEST WINNERS

You can't go wrong with the Magnificent Four. Cash prizes up to £1,000 can be yours by buying any one of our highly successful lottery tickets. Can you afford to wait for a windfall? For the benefit of our customers, we list the latest winners.

£1,000: E. J. M. Shepherd, 35 Chapel Street, Hemel Hempstead; R. S. Farmer, 8 Lamers Road, Stopsley, Luton; A. P. Broderick, 424 Leagrave Road, Luton; J. O'Brien, 41 Longlands Road, Welwyn Garden City; D. B. Khetia, 3 Highbury Road, Luton; A. Hendry-Barkus, 9 Tilecroft, Welwyn Garden City; S. Whittaker, 15 Cobbitts Road, Maulden, Beds; L. J. Springett, 9 John's Road, Hitchin.

£250: M. Eames, 23 Bunhill Close, Dunstable; H. Wood, 46 Third Avenue, Sundon Park, Luton; S. Gardner, 19 Eynsford Court, Hitchin; W. H. Stevens, 120 Churchfield Road, Houghton Regis, Beds; D. Gould, 8A Clapham Road, Bedford; B. Dennis, 22 Millards Close, Cranfield; D. H. Kemp, 6 Whitethorn Way, Luton; P. Bates, 274 West Street, Dunstable; A. R. Stone, 98 Warwick Road, Stevenage; S. Hubbard, 78 Newnham Avenue, Bedford; N. Dawson, 39 Shepherds Mead, Hitchin; E. Relf, 84 Althorp Road, Luton; A. Rolfe, Icknield Farm, Icknield Way, Tring; W. F. Delderfield, 15 Woodlands Avenue, Berkhamstead; M. Harkins, 18 Erin Court, Dunstable Road, Luton; T. Humbles, 89 Dellsome Lane, North Mymms, Hatfield; P. L. Parsons, 82 Hockwell Ring, Luton; A. Tarbox, 37 Oakley Green, Leighton Buzzard; D. E. Underwood, 95 Churchill Road, Leighton Buzzard; C. McLeod, 13 Himton Close, Leighton Buzzard.

£100: C. Dunham, 9 Connaught Road, Luton; P. Upton, 35 Browning Road, Luton; J. Richardson, 97 Shakespeare Road, Luton; G. Walker, 45 Kymswell Road, Stevenage; J. I. Gibson, 59 Clophill Road, Gravenhurst, Beds.; R. Taber, 25 Clover Close, Luton; E. C. Laffey, 82 Balmoral Road, Hitchin; Mrs. Fairbank, 7 Lady Grove, Welwyn Garden City; D. Cobb, 123 Tavistock Avenue, St. Albans; A. S. Bayliss, 23 Caledon Road, London Colney, St. Albans; G. Pullard, 37 Vandyke Road, Leighton Buzzard; W. Giles, 6 Darley Road, Hitchin.

£25: Mrs. J. Nagy, 54 The Tene, Baldock; B. H. Phillips, 152 Bearton Road, Hitchin; A. Risbridge, 65 Orchard Way, Letchworth; J. A. Swain, 27 Commons Lane, Letchworth; J. Carter, The Orange Tree, Baldock; A. Armit, 6 Newtons Way, Hitchin; J. Batten, 45 Sunnyside Road, Hitchin; A. Hardy, 130 Chaucer Way, Hitchin; O. Newhouse, 8 Norman Close, Letchworth; K. Railton, 52 Regent Street, Stotfold; B. Boyner, 12 Hillcrest, Baldock; A. Schonberger, 24 Rooker Close, Letchworth; I. Fenton, Cheshire House, St. Johns Road, Hitchin; L. Smith, 33 Redhill Road, Hitchin; A. Burkett, 15 Lannock, Letchworth; A. Burling, 10 North End, Kelshall, Royston; C. Hunte, 6 Townley, Letchworth; C. Cook, Easiephit Shoes, Hitchin; A. Parson, 78 Monklands, Letchworth.

MEMBERS OF THE

Vice Presidents Suite

Blue Arrow Staff Bureau
3 Holywell Hill, St. Albans
Herts.
Phone St. Albans 61373

Drapers Coaches
117B Gardenia Avenue
Luton
Phone Luton 597391

Filmergraphic Associates
Alton Road, Luton
Phone Luton 36407

N. S. Fookes
N. S. Fookes Engineering
Services Ltd.
45 Latimer Road, Luton
Phone Luton 26783

Mr. I. E. Holmes
Ivor Holmes Ltd.
82-88 Marsh Road, Luton
Phone 56622

E. W. Hudson Holdings Ltd
Union Street, Luton
Phone 30511

Richard C. Larkinson, Esq.
Richard C. Larkinson
(Baldock) Ltd.
Station Works, Baldock
Herts.

Dr. & Mrs. G. L. Plester
9 Briars Close
Nuneaton
Warwickshire

L. W. Wainwright
Fredk. Ray Ltd.
Stanbridge Road
Leighton Buzzard
Phone 372241

Robinson Metal (Luton) Ltd
Caleb Close
464 Dunstable Road, Luton
Phone Luton 53866

R & J Travis Ltd.
Northbridge Road,
Berkhamsted
Phone Berkhamsted 5303

Mr. R. FitzPatrick
Pre Hotel, Redbourn Road,
St. Albans, Herts AL3 6JZ

Chiltern Installations
28/32 George Street
Luton
Phone Luton 28308/9

Euro-Exhaust Centre
233 Dunstable Road
Luton
Phone Luton 38651

Fine Stamps Ltd.
Bilton Way, Luton
Phone 36761

Brian E. Handscombe
(Life and Pensions Broker)
22 Cardiff Road
Luton
Phone Luton 24404

John Hooper (Builders) Ltd.
66 Chase Street
Luton
Phone Luton 412525

Mark James (Salvage) Ltd
16 West Street, Dunstable
Phone Dunstable 605944

P. Laycock
Luton Sports Press
Hazelbury Crescent
Luton
Phone 28757

A. Hunter, Esq.
Ravenmere Ltd.
Allric House
21 Farley Hill, Luton
Phone Luton 32640

Richmond Electronics
(Markyate) Ltd.
Hicks Road, Markyate
Herts.
Phone Luton 840761

T. & H. Tyre Services Ltd.
Manor Road
Luton
Phone Luton 27665

Mr. E. Fountain
Vauxhall Motors
Luton

TOWN TOPICS

CENTURIANS CELEBRATE...

Our annual ball, held in the Hatters Suite, was a very happy occasion, when members and their guests were joined by directors, vice-presidents, members of staff of the football club, and the manager, his staff and first team squad.

The best kept secret of the past few weeks was revealed when Vic Hardy, an officer of the Century Club, presented the Player of the Year award to David Moss. In second place, was Jake Findlay, with Mike Saxby coming a close third. Indeed, the voting was very close throughout the team, an indication of the regard all the players are held in, and an appreciation of their fine efforts on the field.

The award of Supporter of the Year, presented by David Pleat, went to Neil Gambrell, who has been a constant supporter over many years, and is also a hard working committee member, travelling in from St. Neots to every home game and meeting.

Chairman Ken Ball toasted the success of the football club, and in addition presented a cheque of £2,000 to John Smith. It would be appropriate also to acknowledge with thanks the support received from members which enabled us to mount a magnificent tombola.

It will be interesting to discover which young player will qualify for the Young Player Award, and we shall have to wait until the chairman's end of season party later this month before we know. This award was instituted last year, and Wayne Turner was a worthy first winner.

Perhaps we can also add our congratula-

tions to Alan West on his impressive total of League games. Alan has long been a friend of ours in the Century Club, and we wish him continuing success in his playing career.

Today, we welcome the team from Shrewsbury Town. We remember the party of Centurians who travelled to Shrewsbury at the beginning of December who returned well pleased with the result. Let us hope we begin April in an equally auspicious way, and good luck to our team today.

Our annual ball also culminated in a boost for our own funds after Century Club member Rex Vasey presented David Pleat with a bottle of whisky earlier in the season as his own Manager of the Month award. David kindly agreed to raffle the bottle during the ball and it was finally knocked down to Reg Carrott. Our picture shows Reg (left) David and Rex.



JUNIOR HATTERS NEWS

With only two magazines, including today, until the end of the season, we take this opportunity of congratulating all those members who have birthdays due before the end of May. Our last magazine, for the game against Wrexham, will contain birthdays up to and including the start of next season.

1st to 15th April: Leigh Smith, David Hanley, Elaine Hayward, Andrew Brooks, Terry Robinson, Gary Viccers, David Fielder, Mark Stringer, Jimmy Staup, Tim Croft, Jason Gornall, Stephen Gorbust, Matthew Draper, Jonathan Mitchell, Philip David Wilson, Stephen Gorbust, Steven Bangs, Paul Johnson.

16th to 30th April: Jason Bennett, Thomas Mullen, Phillip Parker, Graham Randall, Kurt Kenneally, Stuart Pilgrim, Jeremy Crawley, Matthew Hall, Ivan Kirby, Stephen Baker, Stuart Palmer, David Steele, R. J. Gates, David Samal, Ian Lee Folland, Stephen Ayres, Chris Norton, Grant Sayers, I. Bartlett, Martin Paul Harris, David Highey.

1st to 15th May: Helen Anderson, Bryan Sanders, Gatheth Buckland, Gethyn Buckland, Gary Jaques, Paul Clarke, Neil Rigby, Darren Gray, David Neil Booth, Paul Fensome, Darren Austin, Thomas Hooper, Neil Anthony Ansell.

16th to 31st May: David Chellow, Duncan McKay, David Bartlett, Sarah Norman, Gary Bedingfield, Nicholas Leconte, Erroll Pengelley, Trevor Mitchell, Graham Down, Chris Thompson, Mark Kitchener, Alan Farrar, Robbie Steenburgh, Kevin Lennon, Simon Thomson, Jody Goodship, Paul Horgan, Andrew Gray.

YOU'RE ON TO A GOOD THING WITH LUTON

Discounts and new and used cars, holidays, sports equipment and household goods. Savings for students and senior citizens and the chance to watch Luton Town ABSOLUTELY FREE. That's our fantastic package deal we are offering supporters who take advantage of the new members' ticket scheme which came into operation on 31st March.

Our good friends Tricentral (Cars) Luton Ltd., will offer up to ten per cent discount on new cars and up to £100 off a quality used vehicle on production of your members' ticket — and provide you with a members' ticket for the following season FREE OF CHARGE.

Bernards World Of Sport (sports equipment), Blue Chip Marketing Limited (electrical, sports, household and photographic equipment) and Photravel (holidays) are the participating companies who offer discounts for supporters taking advantage of this unique scheme.

On match days, members will participate in a draw, held on the electronic scoreboard shortly to be erected on the Kenilworth Road terraces — and there are several prizes to be won.

We have introduced this scheme to help our own supporters — who can help themselves to huge savings by taking advantage of it. We want every one of our regular fans

to feel part of the club as we climb into the exciting eighties.

It is a challenge the club accepts with responsibility, and that begins with substantial savings for students and senior citizens — irrespective of whether Luton are playing in the First or Second Division next season.

How can you join? On the following page, you will find an application form. Fill it in NOW or contact the ticket office for further details. Applications are being accepted NOW, and existing season ticket holders have until 31st May to claim their same seat. Four your guidance, we reproduce below the savings you can make.

Description	What you pay	What you save on next season's match day prices	What it costs per match when you buy a season ticket
CENTRE STAND (Seats)	£40.00	£44.00	£1.90
WING STAND (Seats)	£35.00	£49.00	£1.66
BOBBERS STAND (Seats)	£35.00	£49.00	£1.66
SENIOR CITIZENS, STUDENTS AND JUVENILES (Seats)	£15.00	£6.00	71p
ENCLOSURE (Standing)	£25.00	£27.50	£1.19
OAK ROAD (Standing)	£25.00	£27.50	£1.19
KENILWORTH ROAD (Standing)	£25.00	£27.50	£1.19
SENIOR CITIZENS, STUDENTS AND JUVENILES (Standing)	£15.00	£6.00	71p

MEET OUR NEW YOUTH DEVELOPMENT OFFICER

Chief executive John Smith, writing in the magazine for our previous home game against Watford, revealed plans for attracting up to 1,000 youngsters to home matches next season.

This week, we give our new youth development officer, Colin Ball, the opportunity to air his views on his appointment.

"Some of you will know I am no stranger to the Town. I have been a supporter for nearly 30 years, and I was particularly proud to serve the Luton Town Supporters (1971) Club as their chairman in the days of Alec Stock. I am sure that my experience during my time with our Supporters' Club will serve me in good stead for the new role I am about to undertake, as will the schools' liaison work which I have undertaken in a voluntary capacity for the club during the past five years.

"It will, therefore, come as no surprise to you that my main concern will be centered on developing youthful support.

"The coverage given to football through the media, both television and the press, is great. The influence it has on us, especially the impressionable, is even greater. In my life-time, there never has been such a time when people were so well-informed (perhaps 'bombarded' would be a better word). Sport generally and football in particular receives almost constant publicity. Don't get me wrong, I'm not complaining about publicity, but what has it all done for the clubs? A look at last week's attendances will give you the answer.

"Some young people prefer to 'support' from the comfort of their homes, and I am



well aware of the very good reasons they could put forward for their preference, but I believe that trying to identify a football team through the medium of an edited picture is nothing like as satisfying as the real live thing.

"My memories take me back to the halcyon days of the immediate post-war years when I flocked along, together with tens of thousands of others, to cheer our heroes every Saturday, on grounds both small and large, up and down the country — and how we enjoyed the 'electric' atmosphere and shared the skills and thrills of the competitiveness of the players, as a common experience.

"I believe there is an urgent need to put our great national game into its right perspective for our young people today. Certainly, there is galloping inflation, with all its related consequences, and things even more sinister are constantly threatening the very existence of our game. But I

am an optimist and feel in my heart that we can overcome the problems, whether they be caused by money or by the activities of a mindless minority. Like John Smith and David Pleat, I am a firm believer in the vitally important part which youth has to play in all aspects of football today, given good leadership and coupled with a concentration of resources and energies from football clubs.

"Discussions on how youth, as a powerful source of support, can be harnessed to help our club are already under discussion with important local people. Many suggestions have been put forward and more will evolve as time goes on. Perhaps there are some ideas which you, the reader, would like to put forward? If so, please share them with me by writing to me at the club, and outline your thoughts.

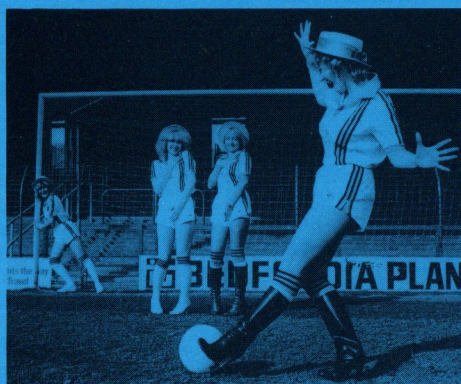
"Finally, let us remember our present involvement at youth level — our Sponsor Kids at every home game, our Junior Hatters (an idea which arose directly out of the Supporters Club (1971) although its roots go back into the older Bobbers Club), our mascots, the bands and choir from Sandy and Stopsley. All these, and more help to build up the essential liaison between schools and parents and our club and are helping to lay a firm foundation for future plans.

"I am convinced that the future of our great club, which has, over the years, meant so much to many, will be assured if we can help to stimulate and motivate our young supporters, youth is the key and lifeline to the success of Luton Town.

COLIN BALL

THE TOP HATTERS

How's this for a Promotion team



Why not let the Top Hatters help promote your business. These girls are available for all kinds of promotional work.

For

TRADE SHOWS · EXHIBITIONS · CARNIVALS · FETES
PROMOTIONS

why not add a touch of eye-catching appeal just ring Lauren at
Luton 32959.

LUTON TOWN FOOTBALL & ATHLETIC CLUB LTD

MEMBERS' TICKETS 1980-81

APPLICATION FORM

NAME

ADDRESS

TEL. No.

I have supported Luton Town since

At present I hold Season Tickets for:

BLOCK..... ROW..... SEATS.....

.....

I wish to apply for the following Members' Tickets for the season 1980-81 and I agree to abide by any rules and regulations which are in force from time to time and I will do my best to promote the interests of Luton Town Football Club.

Signature

AREA	QUANTITY		SENIOR	
	£ . ADULTS	£ . STUD/JUV.	£ .	CITIZENS
CENTRE STAND				
WING STAND				
BOBBERS STAND				
MAIN STAND ENC.				
OAK ROAD				
KENILWORTH ROAD				

- a: I require a total ofTickets and I enclose my full remittance of £..... in settlement.
- b: I require a total ofTickets and I enclose a remittance representing 10% of the total purchase price of £.....
- c: Financing can be arranged on the full purchase price. For further details, contact the Ticket Office. Telephone 411622.
- d: Students: Must be attending College full time. Documentary evidence required.
- e: Juveniles: Age qualification is 15 and under.
- f: Senior Citizens: Pension book to be produced.

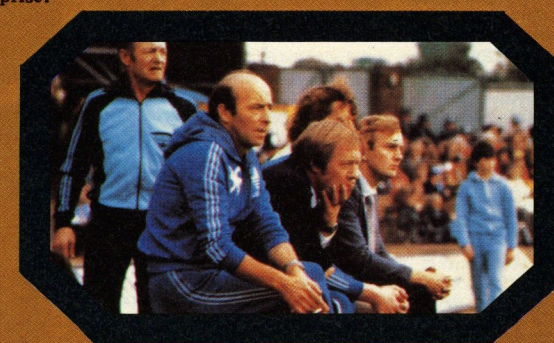
NUMBER 21
Programme
Plus
DESIGNED & PRODUCED BY
SPORTOPIA PROMOTIONS LTD
172-176 THE HIGHWAY LONDON E1 9DD
TELEPHONE 01 481 8161

HOW MUCH CONTROL

DON REVIE won his fight against banishment from English football when he challenged the Football Association in the High court last December. It was a hollow victory though, and Court 14 must have seemed a lonelier place than the desert during the two weeks proceedings which ended with the Judge, Mr. Justice Cantley, launching a scorching attack on the former England Manager. It was a sad ending for a man who had gained the respect of everybody during his days at Leeds United, the club he piloted from virtual obscurity in the Second Division, to a position of power and strength. A force to be reckoned with on the fields of Europe, Revie's strength it had seemed had been his ability to organise and plan. There was little doubt that he had learnt the knack of man management. His relationship with his players was quite unique, and he appeared to have the ability to put over his views in such a way, that the players were able to absorb the details and perform them without difficulty. It is little wonder then that there was no opposition when he was asked to take control of the England team.

But during those December proceedings in the High Court there emerged startling facts, disclosures and admissions that brought into question Mr. Revie's suitability to be the boss of a professional football club. He admitted that if he ever received criticism of players from Directors or Committee men, he would keep those players in the team, even if in his own mind he agreed with the criticism. Just to show that the officials could have no influence on his team selection. There was in fact a reticence to admit that others outside of the managerial circus could know anything about the playing side of the game. And this attitude is by no means an unfamiliar situation. Throughout the game many managers adopt the opinion that Directors and Officials can not understand the problems unless they have been a professional player. Such misconceptions are founded on fear and you do not have to look too far to see why. When Revie said: "the only security a football manager has is winning matches," he was right. The trouble with football is that it is not run professionally, and by that I mean by professionally qualified men trained for the job.

Don't get me wrong. I am not suggesting that men such as Revie are not qualified to coach, train and develop the tactics of the sport, of course they are. But what qualifications do ex players have for managing a Limited Company? For that is exactly what a Football League club is. Yet many clubs, especially those in the lower divisions, give their bosses almost carte blanche powers in the affairs of the Company. Equally the men at the top, the Board of Directors are not always qualified for the positions they hold. By the very essence of the structure of football they are unpaid servants, it is an act of love, a hobby rather than a business venture, and in many respects this shows. Scotland manager Jock Stein says: "You can not apply the same principles of business to football managers" and of course he is right. But does a quick PFA course on management, qualify a person to come straight in at a managerial level in a cut throat business where millions of pounds are involved? Wouldn't it be more logical to employ them as team managers responsible only for the organisation of the playing side, similar in fact to the system adopted on the continent. The financial, commercial and administrative affairs could then be handled by experts in those fields, under the control of a Managing Director with full Board status. Only then will the structure of our football clubs take on the appearance of a professional enterprise.



News for
middle tar smokers.

From Rothmans
the milder cigarette

Rothmans King Size

SPECIAL MILD



Rothmans
King Size

SPECIAL MILD

ROTHMANS OF PALL MALL, LONDON, EST 1890

LOW TO MIDDLE TAR As defined in H.M. Government Tables.
H. M. Government Health Departments' WARNING:
CIGARETTES CAN SERIOUSLY DAMAGE YOUR HEALTH

LAST CHANCE FOR ROME

There's still time for you to win that coveted place on an Italian-bound aircraft to watch England play in the European Championships this summer.

That's the fabulous prize we are offering the lucky Luton Town fan — in conjunction with travel agents Photravel — who wins our competition aimed at budding journalists. All you have to do is to write a match report on this afternoon's game. It should be approximately 400 words and preferable typed — but that's not essential.

Our magazine editor has been flooded with entries in recent weeks and the special panel which will judge all heat winners will obviously have a tough job in selecting

the overall winner.

Today's game is your last chance to attempt to win our fabulous prize which includes your flight and accommodation to watch our national team in Italy.

Entries, which should be marked "Rome Competition" and should reach us by first post on Wednesday, should be sent to: The Magazine Editor, Luton Town FC, Kenilworth Road, Luton. We hope to announce the winner in the Wrexham magazine.

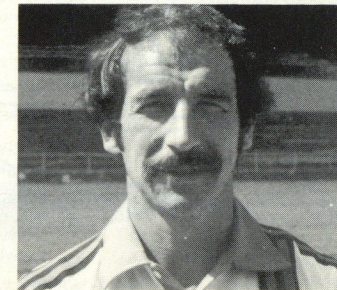
This week's winner, pushed all the way by James Mead of North Road, Berkhamstead — already a previous heat winner — was Raymond Mee, 37 Lansdowne Road, Luton, who wrote:

A STUMBLE AT A VITAL FENCE

These things happen; especially on such a dreadfully muddy pitch. Luton Town, who had risen to the heady heights of the Division by playing neat, stylish football, were reduced to a desperate kick-and-run approach, always harried by a lively Burnley side struggling for Second Division survival. Mud and high winds — there were both in abundance — are great levellers, and in the treacherous conditions Luton were happy in the end to salvage a point.

The first half indeed was slightly shaded by Burnley. Leighton James, displaying many of the tricky ball skills of his international days, was a thorny problem in Luton's right side and Jake Findlay on several occasions was forced to show his talents. That is not to say Luton hadn't their chances. Encouraged by a vocal Oak Road, Brian Stein found room for a clear header in the opening minutes, but saw it bounce clear off the shoulder of Alan Stevenson, an ex-England Under-23 international.

The second half was certainly Luton's though. Playing his 250th game for the Town, Alan West was busy and creative in midfield, whilst Stein, his pale strip muddled, his driving runs catching the eye as he raced goalwards, had one of his finest games. Unhappily the conditions — the pitch was the consistency of bread



BOB HATTON

sauce — and some bemusing refereeing by Mr. R. S. Lewis of Great Bookham, caused attack after attack to flounder at the last moment. Even the crowd's pent up anticipation seemed to further pressurise the players. They just couldn't make that final pass or that crucial shot quite count.

Then disaster! Twenty minutes into the second half there was a swift counter-attack along the Burnley left flank. The defence couldn't cut out a low shot across the goal which was turned home by Billy Hamilton. One nil to Burnley; a numbed and silent crowd; and the appalling prospect of a home defeat.

Luton had then to raise their morale as much as their game. Burnley started pulling ten men back in defence and the cloying mud stopped all attempts at the neat inter-passing movements that the Town play so well. But they battled; they adapted; and after 73 minutes they scored. Stein twisted and turned his markers in the penalty area, pulled across a fine low ball which Bob Hatton side-footed home. One all.

For the next 15 minutes there followed a constant bombardment of Stevenson in the Burnley goal. A clean-looking header by Saxby was disallowed for an alleged push (as harsh a decision as I've seen this season); a stinging shot drilled low by Hatton, after a strong run through the centre, was well saved; and Hatton again, seven minutes from time, headed over the bar a curling, tantalising cross from Kirk Stephens.

There had been two minutes of injury time when referee Lewis blew his whistle. A fine Leighton James cross had just been siezed on by Derek Scott and clipped against the bar. But few supporters, filing thoughtfully from the ground, felt satisfied with one point. Over the intercom they had just heard that only four horses had finished the Aintree Grand National. Perhaps they felt Luton too had stumbled at a vital fence.

THIS AFTERNOON'S SPONSORS

Today's match is a joint sponsorship between OBC (Southern), heating and plumbing merchants of Dunstable, and Thorn Heating Limited of Gateshead.

The sponsorship evolved from a meeting between Luton Town season ticket holder and keen fan Jim Harrison, and Thorn Heating's southern sales manager, Reg Minett. Jim is regional purchasing director for OBC and saw the sponsorship as a good idea for OBC and Thorn to entertain their mutual customers of the heating and plumbing trade from a wide area around Luton and Dunstable.

Thorn Heating Limited are part of the giant Thorn Electrical Industries and are

manufacturers of gas and oil fired boilers for the domestic central heating market. As such, they produce free standing, wall hung and hearth type central heating boilers and are categorised as one of the "big five" of the heating market.

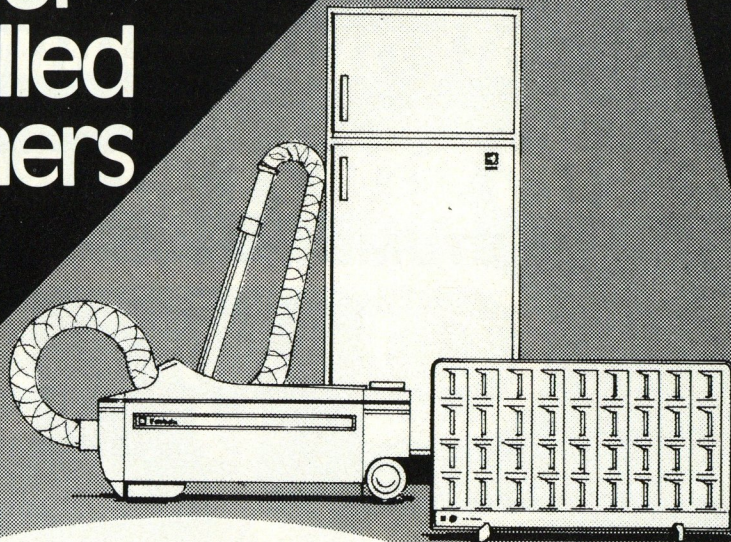
OBC Southern are a division of Wolseley Hughes Merchants Limited and originally started as OBC Limited; a company based in Worcestershire. In 1972 Jim moved from the county to Bedfordshire to set up a new depot in Luton.

The enterprise was such a success that the premises proved to be too small and, in 1978, OBC Southern moved to new, very much larger premises at Church Street,

Dunstable. From there they stock and supply every major appliance for the domestic and commercial heating market in gas, oil and solid fuel, as well as every component that goes into a central heating system such as copper tube, radiators, and controls etc. More recently OBC have diversified into stocking plumbing and sanitary ware such as baths, bogs, basins, and bidets.

OBC Dunstable is the regional head office and distribution centre for 22 branches covering East Anglia, South East, and Southern England. For product information and prices contact Roger Barwell on Dunstable 600202.

Electrolux are looking for some skilled performers



Why not join the Electrolux team that can extend your talents in our exciting expansion programme.

We are currently looking for

PRODUCTION ENGINEERS, PRODUCT DESIGNERS AND DEVELOPMENT ENGINEERS

to work together from inception to production, understanding not only their own specialisations but also technological innovations and production techniques.

You will find you have far more chance to see your ideas come to fruition. This means that you will need to work under pressure to keep us ahead — But at Electrolux you can see your ideas turn into reality.

If this interests you why not contact Ian McLernon, Personnel Officer at the address & telephone No. below.



**Electrolux,
Oakley Rd, Luton.
Luton 53255**

RESERVE REPORT

By
GEORGE ROGERS

The Combination team have not played since the last programme notes were compiled but, over the remaining weeks, they have at least two games a week to complete their fixtures. In a mid-table position, they have over the season competed well and held their own against most of the top teams. The fighting qualities of the younger players has been tremendous, many times they found themselves a goal down but have fought back to gain a point. The enthusiasm and experience of coach Dave Coates is paying off and I am sure many of these reserves will be first team players as they grow stronger.

LUTON TOWN 1 DERBY COUNTY 0

Played at Vauxhall Motors sports ground, the Town Under-19 side entertained Derby County in a Midland Youth fixture. Playing good football, the Town created many chances but it was not until mid-way through the second half when Frankie Bunn broke clear and rounded the 'keeper to give Luton the points. The two remaining games in this competition are Swindon (away) on Wednesday 16th April and Birmingham (home) on 24th April. Again the Town are in a mid-table position.

Team: Walker, Woodward, Murphy, Johnson, Piotrowski, Harriott, Madden, Turner W., Bunn, Cosby, Heath, Small.

POTTON UNITED 0 LUTON TOWN 0

Fielding several schoolboy and trialists in this Wallspan fixture, the Town could not create many chances. Both defences were on top throughout and kept all attempts at goal at long range, giving the goalkeepers a simple task to keep the scoresheet blank.

Team: Phelps, Evershed, McFall, Cosby, Waters, Foote, Cole, Brammer, Small, Reynolds, Clark, Bunn, Piotrowski.

Having gained a place in the semi-final of the Wallspan League Cup, they will play Stevenage on Saturday 19th April at Stevenage

with the second leg at home the following week. The other semi-finalists are Barton Rovers and Aylesbury.

Another semi-final. The Town's youth team are due to play Norwich City youth in the Eastern Junior Cup. This is arranged for Thursday 17th April at Vauxhall Motors sports ground (3 p.m.).

Representatives attended a meeting of the South East Counties League at Arsenal. The Management Committee of this League had, due to the number of applications, proposed that the League be split into two groups of 12, one north of the Thames and the other south. No decision was made, but it was thought that extra travelling needed, was a drawback. However there were vacancies in the Under-17 section. Although the Town are interested, no decision will be taken until the League's annual general meeting.

KNOW YOUR YOUTH PLAYER

Today we focus John Cole. John is another boy from the Birmingham area. Last season he played in many of the youth games and it was his performances in these which prompted David Pleat to offer him an apprenticeship when he left school last summer. He represented his school and North Warwickshire. His hobbies are badminton and table tennis. An early injury put him out of action for two months but we expect him to make future progress.



HAVE YOU EVER TASTED TIGER?

Tiger Bitter is now at Luton Town Football Club.

Tiger from Everards. A cool and satisfying way to quench a thirst.

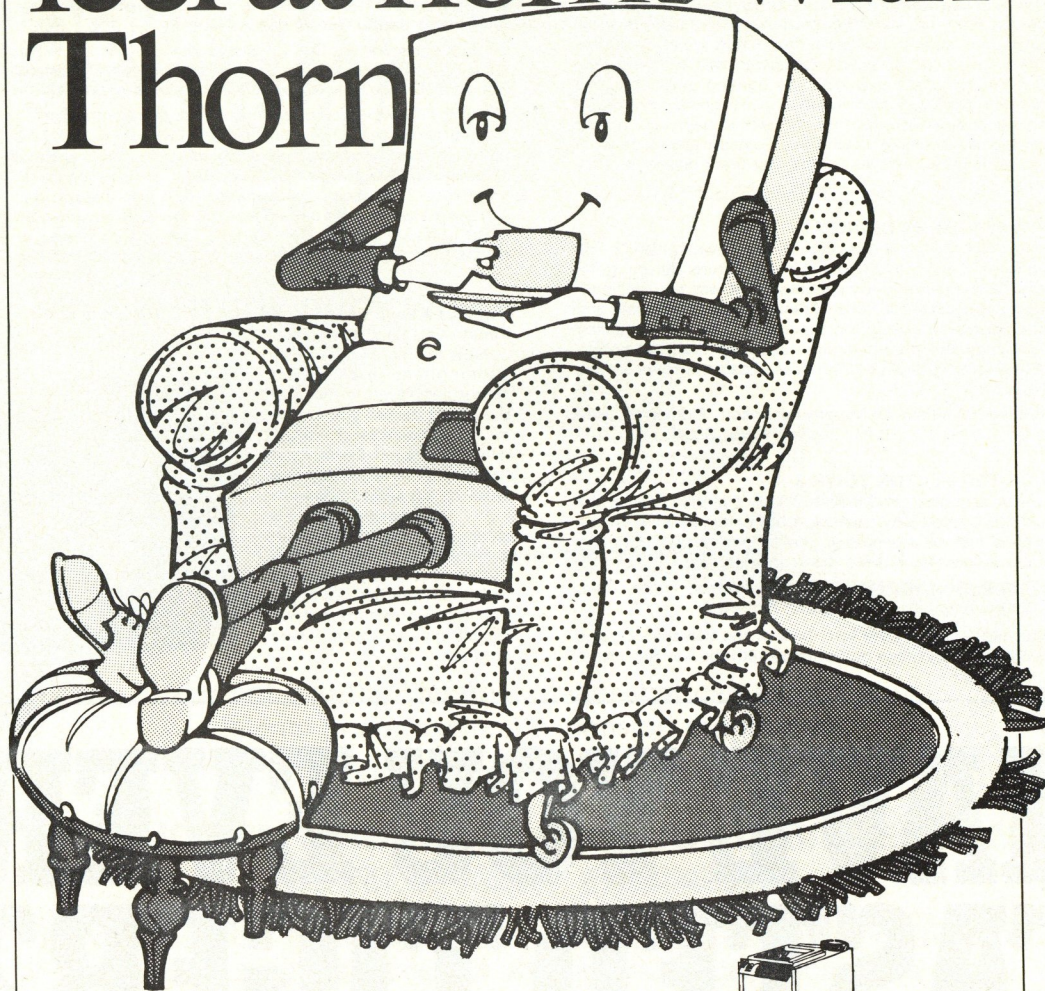
Next time you go to the bar, ask for a Tiger.

You won't know what you've been missing until you try it.

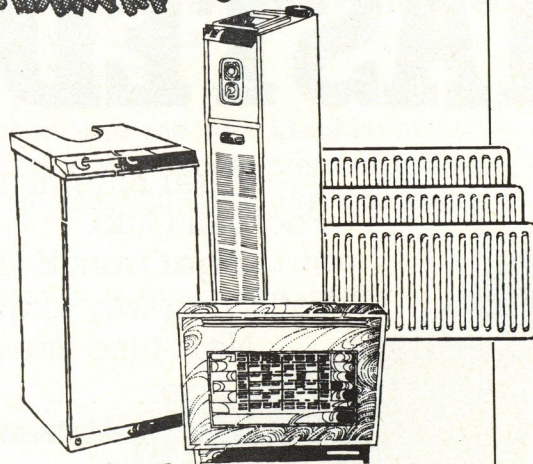


**EVERARDS FINE BEERS.
Top of the thirst division.**

feel at home with Thorn



A whole range of gas and oil boilers that combine performance economy and good looks—And what's more they're designed for ease of installation and servicing.



Thorn Heating ...the housewarmers

Thorn Heating Ltd., Eastern Avenue, Team Valley T.E., Gateshead, Tyne & Wear, NE11 0PG. Tel: (0632) 872211.

Telex: Thorn Heat Gateshead 53265.

Stocked, distributed and sold by OBC (Southern), Church Street, Dunstable. Telephone 600202

HERE TODAY SHREWSBURY TOWN

Mention Shrewsbury Town to the top teams in the Second Division and you'll send shudders down their spines. Graham Turner's team seem to have an uncanny knack of beating the cream of the Division on their own Gay Meadow ground, and that was emphasised two weeks ago when they walloped Queens Park Rangers 3-0.

The arrival of striker John Dungworth last October has helped Shrewsbury to make their fans realise they have finally arrived in the Second Division. Dungworth was a big priority on a host of managers' shopping lists after scoring 60 goals in two seasons for Aldershot. But it was finally Shrewsbury boss Turner who signed him.

Yet Dungworth knows all about the life of a much travelled striker. He made something of a fairytale start to his professional career with Huddersfield Town in the First Division when he was only 17. But two free transfers moved him to new pastures with Oldham and Aldershot with loan spells at Barnsley and Rochdale squeezed in between.

Manager Turner, formerly a player with Chester, arrived at Shrewsbury in January 1973 and was appointed player/manager at the end of 1978 when he took over from Richie Barker. Turner's keen eye for a lethal striker soon had him following Dungworth and, after protracted negotiations between the two clubs, finally got his man.

But Shrewsbury's major share of honours this season rest strangely on their chances of winning the Welsh Cup. They are scheduled to Swansea City — probably the favourites — this Tuesday in the semi-final. But even if Shrewsbury win that game and then beat their opponents in the

two-legged final, they will be unable to play in Europe next season.

The Welsh FA stipulate that only their national teams can play in Europe and, if Shrewsbury lift the trophy, the last remaining Welsh team in the competition go through to Europe to play in the Cup Winners' Cup.

But Dungworth is still satisfied to be given the opportunity of winning a possible Cup winners' medal. He recently went on record as saying: "I desperately want to win something from which ever country it comes from. I think I've waited long enough."

But his first priority is helping his colleagues to beat Luton this afternoon and, although Shrewsbury have failed in their bid to give Dungworth the opportunity of playing in the First Division again next season, this progressive club with an ambitious management team will be striving for higher status next term.

Shrewsbury's recent results against the top teams in the Second Division strongly suggest Luton cannot take anything for granted in today's match. In goal, Bob Wardle has recently come into the team at the expense of Ken Mulhearn. Wardle's first club was Bristol City and he stayed there for two years before joining Shrewsbury. Mulhearn is a vastly experienced player and joined his first club, Everton, after leaving school. But he had to wait until he joined Stockport County before making his League debut, and later went to Manchester City to experience European soccer during the Allison/Mercer era.

Fullback Jake King has been a regular

member of the first team for the last six years and his valuable experience has been a vital asset to Shrewsbury, his only club. He is the club captain. King is partnered by Carleton Leonard, another youngster who has been with only Shrewsbury. He was spotted playing for a local schools team.

Central defender Colin Griffin had his baptism with a Football League club when he signed for Derby as an apprentice professional, but joined Shrewsbury four years ago for a five-figure fee and the back four is usually made up by John Keay who joined the club in 1977 after being released by Glasgow Celtic. His popularity with the fans gave him the Player of the Year title last season.

Front runner Stephen Biggins, signed for a small fee in December 1977 from Hednesford Town, didn't take long to hit the headlines when he scored seven goals in his first nine League games. In addition to Dungworth, he is partnered by Paul Maguire, another Scot. Yet another product of Scottish junior football.

Midfield is powered by David Tong, a £25,000 signing from Blackpool in September 1978, and Ian Atkins — a player who can feel adequately at home at centre half or up front. Turner can also call on the experience of Arthur Mann, another midfielder player who was signed from Notts County last close season for £30,000 after spells with Hearts, Manchester City and Blackpool.

Sammy Chapman is another Shrewsbury signing with a wealth of experience behind him. Another former Notts County player, he enjoyed over 350 appearances with Nottingham Forest.



Back row (left to right): Trevor Birch, Ian Atkins, Bob Wardle, Stephen Perks, Ken Mulhearn, Steve Hayes, Tony Larkin, Sammy Chapman.

Middle row: R. Matthewson (coach), Steve Cross, Mike Roberts, David Tong, Jimmy Lindsay, Trevor Jones, Carleton Leonard, Mike Neil, Dean Edwards, Graham Turner (manager).

Front row: Brian Coyne, John Keay, Steve Biggins, John King, Paul Maguire, Colin Griffin, Mark Adams.

WHITBREAD



TROPHY BITTER



LUTON 56622
BEDFORDSHIRE

*Achieve your goal
with*

BMW

MAIN DEALERS
IN
BEDFORDSHIRE

HOLMES

THANKS A LOT



BEDFORDIA

There's no doubt that Luton Town really appreciate the efforts of our match day sponsors who go to much trouble to ensure their guests have an enjoyable day out. This picture shows Clifton Ibbett, managing director of Bedfordia Plant — who kindly sponsored the game against Burnley, receiving a clock from Luton director Jim Yates in recognition of his gesture.

AWAY TRAVEL

Two more away trips until the end of the season. And you can watch them by travelling in style with the Bobbers Travel Club. Coaches leave for Birmingham (a week today) and Newcastle at 11.30 a.m. and 7.30 a.m. respectively and pick up at Cranfield, Marston and Bedford 60, 50 and 40 minutes earlier. Make your bookings in the Bobbers Club every Wednesday evening.

		Adults	Children	Depart
19 April	Birmingham	£2.50	£2	11.30 a.m.
3 May	Newcastle	£5.00	£4	8 a.m.

DOWN MEMORY LANE



This week, we thought supporters would like to see what our first set of floodlights looked like 27 years ago. This picture was taken in August, 1953, at the first switch on. Notice, too, the Oak Road end before it was extended to its present capacity. No seats in the Bobbers' Stand, and the lack of crush barriers on the terraces. The fences behind the goals weren't needed in those days. Times have certainly changed!

DINE OUT IN STYLE



You can now enjoy a mouth-watering steak in the Kenilworth Suite every lunchtime during the week. Catering manager Clive Hustwitt has introduced a superb menu with equally fine prices. Our picture gives you an idea of the facilities we offer. Why don't you enjoy them — and bring your friends.

PLENTY OF COURSES

We are proud of our involvement with the local community and the help we have been able to provide with various events staged on the Hatters Community Arena. Involvement with local youth can only strengthen our community spirit and in this article, Mike Iacono, the deputy youth activities officer provides a round-up of the latest activities.

This afternoon, 180 boys will be presented with certificates by Lilly Fuccillo. They were all on the recent *Evening Post-Echo* three day football coaching course at Stopsley and Leagrave. Once again, they have been very popular.

The next course is from 13th to 15th August and, to avoid disappointment, please apply now.

Over 80 boys and girls have had three day coaching for hockey at Wardown and their presentation takes place at the Hatters Club on 22nd April at 7.30 p.m. Come along and hear some interesting talks on hockey.

The Easter Netball Tournament at the Hatters Community Arena has already taken place, and once again we have seen some very exciting netball played for the Dennis Mortimer and Ken Woodbridge trophies.

On the 26th April we are off to Ipswich for the Inter-Regional Champions All Competitions and the teams representing Luton Town are the 10-12 and 12-14-year-old Cardinal Newman netball teams, the 10-12 Lewsey Centre and 12-14 Hillborough Hatters football teams.

The next Netball Coaching Course starts on the 14th May, lasting six weeks, and is for girls aged 7 to 16 years. The coaching is being organised by the Luton and Dunstable Netball League, so apply now before it is too late.

I would be interested in what indoor and outdoor activities you would like to see at the Hatters Community Arena and Hatters Club. If you have any suggestions, or want further information on those courses mentioned or further ones, please contact Mike Iacono, Deputy Youth Activities Officer, Marsh House, Bramingham Road, Luton. 56879 or 504211.

ARE YOU ON THE ITALIAN JOB?

(see page 11)

Tricentrol
CHASSIS DEVELOPMENTS LTD.
The Conversion Specialists

'Into the Eighties with TRICENTROL' COMPETITION WINNERS

KAREN SCOTT
KAREN SEAGRAVE
CHRISTOPHER FLEETING
and
ALLAN BAXTER

are the four lucky winners
joining the Town's youth team
on their trip to the

BLAU-WITT
INTERNATIONAL
YOUTH TOURNAMENT
in Amsterdam

TRICENTROL CHASSIS DEVELOPMENTS LTD.,
SKIMPOT ROAD DUNSTABLE BEDS LU5 4JX
TEL LUTON (0582) 597575 TELEX 826998

TELMA



HECK	DIVISION TWO
Burnley v Bristol Rovers
Fulham v Newcastle
Leicester v Birmingham
Notts County v Watford
Oldham v Cardiff City
Preston v Chelsea
Q. P. R. v Cambridge
Sunderland v Orient
Swansea v Wrexham



THE TEAMS

LUTON TOWN		SHREWSBURY TOWN
JOHN FINDLAY	1	BOB WARDLE
KIRK STEPHENS	2	JOHN KING
MAL DONAGHY	3	CARLETON LEONARD
TONY GREALISH	4	GRAHAM TURNER
MIKE SAXBY	5	COLIN GRIFFIN
PAUL PRICE	6	JOHN KEAY
RICKY HILL	7	DAVID TONG
ALAN WEST	8	IAN ATKINS
BRIAN STEIN	9	TREVOR BIRCH
BOB HATTON	10	STEVE BIGGINS
DAVID MOSS	11	STEVE CROSS
	12	

**WHERE TEAM SPIRIT COUNTS AND
OUR CUSTOMERS ALWAYS WIN**

IT PAYS TO CONSULT THE EXPERTS



**C.P. HYDRAULICS
(OVERSEAS) LTD.**

**UNIT 4, PARK STREET INDUSTRIAL ESTATE,
OSIER WAY, AYLESBURY, BUCKS.
Telephone: Aylesbury (0296) 81032/81033**

Suppliers of: Just about every type of hose (rubber and plastic) including industrial hoses, fittings, couplings etc. — Hose assemblies made to order — over £1 million of stock available for immediate delivery anywhere in the U.K.



OFFICIAL

**22
TOKEN**

MATCH OFFICIALS

Referee:
A. W. GREY, Gorleston
Linesmen:
J. BARKER, Essex
(Red Flag)
G. CLARIDGE, Dagenham
(Yellow Flag)

OUR NEXT HOME GAME . . .

LEAGUE DIVISION TWO

Saturday 26th April, 1980

WREXHAM

Kick-off 3.00 p.m.

Tickets available from the Ticket Office