

# CHELSEA

<sup>v</sup>  
**LUTON TOWN**



**SEASON 1979-80**

**FOOTBALL LEAGUE  
DIVISION TWO**

**Easter  
Monday April 7  
3pm**

**OFFICIAL PROGRAMME**

**25p**



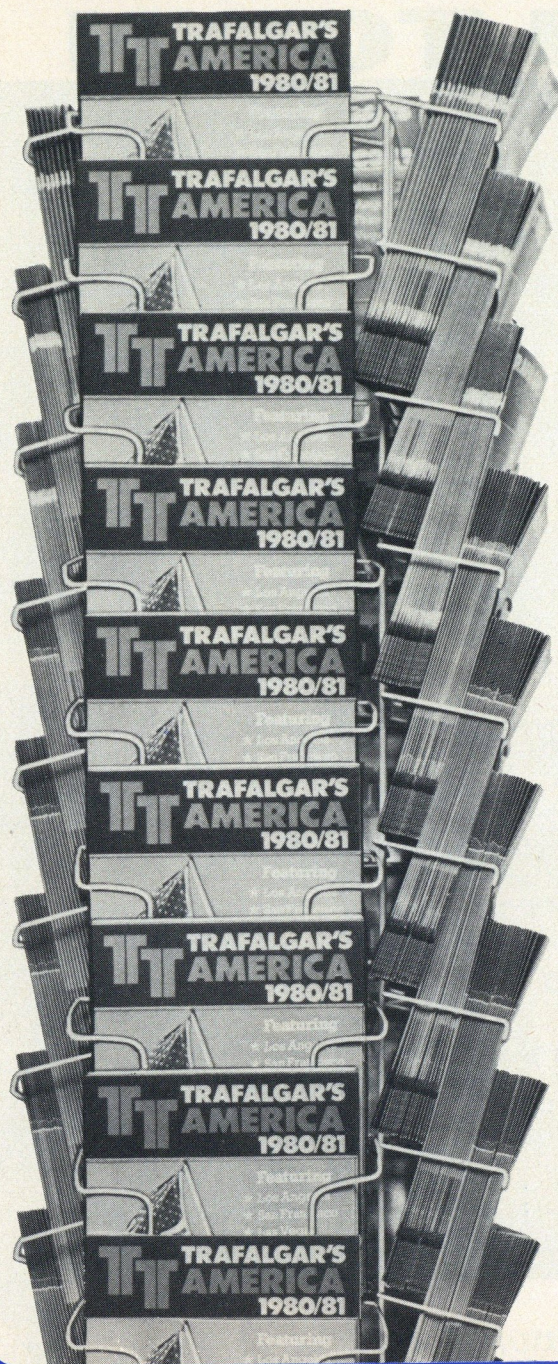
*Today's Match Sponsored by*  
**TRAFALGAR TRAVEL**





# Get it in your hands!

And Trafalgar's America will soon be at your feet!



## The escorted coach tour specialists

When you talk America with your travel agent, talk Trafalgar Tours. Because then you're talking about one of the most experienced coach tour operators in the business. Trafalgar's special knowledge of the Western States, gained over several years' experience, means you get the best-planned itineraries, the best accommodation and the best value-for-money. Prices from £395 for places like San Francisco, Las Vegas, Phoenix.

## Heavenly Hawaiian holidays

If you've an eye for the exotic, we have Hawaii with 8 and 15-day holidays at Honolulu's Waikiki Beach. And there's a trip that could take in the best of both worlds - 8 nights in Honolulu and 8 nights in sunny California.

Finally, for those of you who want to stay a little nearer to home, remember Trafalgar's fabulous Israel programme and Emerald Isle Holidays, the biggest tours operation to Ireland.

For value, reliability and quality, you can't top Trafalgar. Talk Trafalgar to your travel agent.

## Because we care...

Trafalgar Travel Ltd.,  
9/11 Bressenden Place,  
London SW1E 5DF.  
Tel: 01-828 4388. Telex: 23239.

**TRAFALGAR'S  
AMERICA  
1980/81**

# THE TALK OF STAMFORD BRIDGE

## CHELSEA FOOTBALL CLUB

Founded 1905

**Registered address:** Stamford Bridge Grounds, Fulham Road, London SW6 1HS

**Telephone:** 01-385 5545 **Ansaphone:** 01-381 0111

**Telex:** 919220

**President:** Rt. Hon. The Earl of Cadogan, M.C., D.L.

**Board of Directors:** Brian Mears (Chairman),  
Viscount Chelsea (Vice-Chairman),  
George Thomson,  
Sir Richard Attenborough, C.B.E.,  
David Mears

**Chief Executive:** Martin Spencer, F.C.A.

**Secretary:** Sheila Marson.

**Manager:** Geoff Hurst, M.B.E.

**Assistant Manager:** Bobby Gould.

**Head Trainer:** Norman Medhurst.

**Physiotherapist:** Eddie Franklin, M.C.S.P.

**Reserve Team Coach:** Brian Eastick.

**Youth Team Coach:** Mick Leach.

**Youth Development Officer:** Gwyn Williams

**Chief Scout:** Ron Suart.

**Hon. Medical Officer:** Dr. John Vyse.

**Hon. Orthopaedic Surgeon:** Prof. Lipmann Kessel, M.B.E.,  
M.C., F.R.C.S.

**Stadium Manager:** Andy Dunlop.

**Pools Association:** Tony Green (Secretary).

**Colours:** Shirts—Royal Blue with White Collar & Cuffs.  
Shorts—Royal Blue with White Seam. Stockings—  
White. (Second Colours—Yellow Shirts, Green  
Shorts, Yellow Stockings).

**Honours:** Football League Champions 1955. F.A. Charity  
Shield Winners 1955. Football League Cup Winners  
1965. F.A. Cup Winners 1970. European Cup-Winners  
Cup Winners 1971. Won promotion to Division I 1907,  
1912, 1930, 1963, 1977. Football Combination  
Champions 1916, 1918, 1948, 1949, 1955, 1960, 1961,  
1965, 1975, 1977. F.A. Youth Cup Winners 1960, 1961.

**F**OR teams challenging for honours or fighting to stave off relegation, Easter is indeed a testing time, as we well appreciate because, with this visit of Luton Town, we face promotion rivals for the third successive match, following Q.P.R. here last Wednesday and Saturday's visit to Leicester. Both those games were played after this programme went to press, and we hope that more points have been gathered and the injury situation has become no worse. At Charlton nine days ago we overcame the problem of suddenly being without three first-choice players—Micky Droy, Colin Viljoen and Mike Fillery—as well as Colin Lee (ham-string) and John Bumstead, whose ankle injury has kept him out for two months. Hopefully, Colin Viljoen and Mike Fillery have, by now, returned to the fit-and-available list, but for Micky Droy chicken-pox is a cause for longer absence though we hope to have him fit in time for the final run-in. Colin Lee is progressing well, but at the time of writing it was still not possible to say when John Bumstead might be ready again, although he is back in light training.

**WHO GO UP?** By tomorrow night, when Leicester visit Cardiff, Q.P.R. go to Orient and Sunderland visit Shrewsbury, the Second Division promotion picture should look a lot clearer—or will it? We must wait and see, and meanwhile these are the remaining fixtures of the top eight clubs after today's matches:

**Chelsea** (4): Home—Notts Co., Oldham. Away—Preston, Swansea.

**Birmingham** (5): Home—Luton, Notts Co. Away—Leicester, West Ham, Burnley.

**Leicester** (5): Home—Birmingham, Charlton. Away—Cardiff, Wrexham, Orient.

**Sunderland** (6): Home—Orient, West Ham, Watford. Away—Shrewsbury, Bristol R., Cardiff.

**Newcastle** (5): Home—Notts Co., Swansea, Luton. Away—Fulham, Q.P.R.

**Luton** (4): Home—Cambridge, Newcastle. Away—Birmingham, Newcastle.

**Q.P.R.** (5): Home—Cambridge, Newcastle. Away—Orient, Charlton, Wrexham.

**West Ham** (7): Home—Birmingham, Shrewsbury, Charlton. Away—Oldham, Sunderland, Cardiff, Bristol R.

**SIX-GOAL FLASHBACK:** When we played at Luton on the morning of New Year's Day, the players of both sides made the best of a frozen pitch and produced for the fans one of the season's most exciting matches, which ended at 3-3. We were in front once, behind twice and finally equalised 14 minutes from time. Mike Fillery, Ian Britton and Clive Walker were our marksmen, and Luton's goals came from Mal Donaghy, Mike Saxby and David Moss.



## TABLES ★ APPEARANCES ★ SCORERS

(Up to and including Saturday, March 29)

### FOOTBALL LEAGUE—DIVISION II

	P	W	D	L	F	A	W	D	L	F	A	Pts
↑ CHELSEA	35	12	2	3	29	13	9	2	7	30	33	46
Birmingham	34	12	3	2	31	13	6	4	7	17	18	43
Leicester	35	9	5	4	27	17	6	7	4	22	18	42
Sunderland	34	13	4	0	38	12	3	5	9	16	25	41
Newcastle	35	13	3	1	29	11	2	8	8	17	26	41
LUTON	35	7	9	2	33	17	6	5	6	23	23	40
Q.P.R.	35	9	7	2	41	21	6	2	9	21	24	39
West Ham	32	11	2	4	29	15	5	3	7	14	18	37
Oldham	34	11	3	3	27	16	3	6	8	18	26	37
Orient	35	7	6	4	26	27	5	6	7	17	19	36
Shrewsbury	35	11	3	3	34	15	5	0	13	16	29	35
Preston	35	7	8	3	27	22	3	7	7	19	23	35
Wrexham	35	12	2	3	24	10	3	3	12	14	31	35
Cardiff	35	10	3	4	19	13	4	4	10	16	28	35
Cambridge	35	8	6	3	30	17	2	8	8	16	26	34
Swansea	35	11	0	7	27	19	2	7	8	12	30	33
Notts County	35	4	9	5	22	19	6	2	9	19	22	31
Bristol Rovers	35	8	6	3	29	18	2	4	12	15	36	30
Watford	35	6	5	6	18	18	2	7	9	10	21	28
Burnley	35	5	6	7	18	22	1	5	11	18	41	23
Fulham	34	3	4	10	14	25	4	3	10	20	36	21
Charlton	34	6	5	6	21	22	0	3	14	12	40	20

### APPEARANCES

Borota	34	Pates	9
Britton	34	Frost	8 (2)
Fillery	34	Rofe	7
Harris	32 (1)	Bannon	6
Locke	31	Aylott	3
Langley	28 (1)	Stride	3
Droy	26	Hales	3 (2)
Bumstead	23 (1)	Lee	2
Walker	23 (6)	Viljoen	2
Chivers	21 (2)	Iles	1
Wilkins	18	Osgood	1
Johnson	12 (3)	Rhoades-Brown	1 (1)
Nutton	12	Sitton	— (1)
Sparrow	11		

**Goalscorers:** Walker 11, Britton 10, Fillery 9, Langley 9, Johnson 7, Frost 5, Bumstead 3, Harris 2, Chivers 1, Droy 1, Opponent 1. Total 59.

(Figures in brackets: = additional appearances as substitute)

### FOOTBALL LEAGUE CUP APPEARANCES

Aylott	2	Fillery	1
Bannon	2	Harris	1 (1)
Borota	2	Locke	1
Britton	2	Sitton	1
Droy	2	Sparrow	1
Langley	2	Stride	1
Bumstead	1 (1)	Walker	1
Chivers	1	Wilkins	1

**Goalscorers:** Fillery 2, Droy 1. Total 3.

### F.A. CUP APPEARANCES

Borota	1	Langley	1
Britton	1	Locke	1
Chivers	1	Pates	1
Fillery	1	Sparrow	1
Hales	1	Walker	1
Harris	1	Johnson	— (1)

### ON SALE TODAY

**THE** new 1980 CHELSEA TEAM PICTURE—in brilliant colour—is on sale at the Club Shop now. It's 15in × 12in., with the full Chelsea squad on it, and the price is £2. If applying by post, please send £2.25 to cover cost and postage, and make cheque or postal orders payable to the "Chelsea Players' Pool."

### FOOTBALL COMBINATION

	P	W	D	L	F	A	Pts
Arsenal	34	22	6	6	81	38	50
Chelsea	36	21	8	7	60	37	50
Tottenham H.	34	20	9	5	82	42	49
Norwich City	34	20	8	6	61	29	48
Fulham	34	19	6	9	67	46	44
Ipswich Town	35	14	12	9	57	42	40
Southampton	37	13	13	11	36	44	40
Q.P.R.	33	15	7	11	69	60	37
Birmingham City	35	14	9	12	55	48	37
West Ham United	36	14	8	14	62	59	36
Bristol City	31	14	7	10	67	46	35
Bristol Rovers	34	12	10	12	50	60	34
Leicester City	36	14	6	17	58	59	34
Crystal Palace	35	10	11	14	55	56	31
Luton Town	34	8	15	11	35	46	31
Cardiff City	36	10	9	17	47	59	29
Swindon Town	34	11	5	18	46	63	27
Oxford United	35	8	10	17	44	58	26
Plymouth Argyle	36	8	8	20	46	85	24
Orient	34	6	7	21	22	49	19
Hereford Utd.	33	5	9	19	42	72	19
Reading	31	7	5	19	44	96	19

### APPEARANCES

Clare	32	Phillips	5
Sulley	31	Stewart	5 (3)
Iles	28	Walker	5
Hales	26	Docherty	4 (1)
Sparrow	25	Lee	4
T. Elmes	24 (1)	P. Williams	4
Rhoades-Brown	24 (1)	Feeley	3
Pates	23	Jenkins	3
Sitton	22	Harris	3
Frost	17	R. Knock	2
Nutton	15	Borota	1
Johnson	13	Britton	1
Chivers	11	Bumstead	1
Wilkins	10	A. Cook	1 (1)
Stride	9	Droy	1
Aylott	7	Fillery	1
G. Donnellan	7 (1)	Gould	1
D. Powell	7	D. Jasper	1
Bannon	6	Leach	1 (1)
Langley	5	Locke	1
Osgood	5	T. Gammer	1

**Goalscorers:** Clare 10, Frost 7, Johnson 6, Rhoades-Brown 6, Aylott 3, Hales 3, Langley 3, Nutton 3, Chivers 2, Docherty 2, Donnellan 2, Fillery 2, Stride 2, Britton 1, Elmes 1, Lee 1, Osgood 1, Pates 1, Sparrow 1, Sulley 1, Opponents 2. Total 60.

### SOUTH-EAST COUNTIES LEAGUE—DIV. I

	P	W	D	L	F	A	Pts
Norwich City	27	17	6	4	60	25	40
Q.P.R.	25	14	5	6	71	33	33
Arsenal	26	13	7	6	41	27	33
Charlton Athletic	25	14	3	8	54	51	31
Watford	24	13	4	7	49	29	30
Crystal Palace	24	11	6	7	41	42	28
Ipswich Town	24	11	6	7	41	42	28
West Ham Utd.	25	11	5	9	41	40	27
Fulham	24	10	6	8	35	37	26
Millwall	24	9	8	7	37	40	26
Gillingham	28	11	2	15	41	58	24
Orient	27	9	4	14	35	50	22
Tottenham H.	27	8	5	14	48	53	21
Southend Utd.	25	6	3	16	36	54	15
CHELSEA	26	3	7	16	31	53	13
Portsmouth	22	3	0	19	26	75	6

### APPEARANCES

P. Williams	23	Rhoades-Brown	6
P. Morris	23	J. Felton	4 (1)
A. Cook	20	E. Hutchinson	4 (1)
P. Maskell	19 (1)	T. Thomas	4
D. Jasper	18	B. White	4
D. Powell	18	N. Cripps	3
P. Ward	18	T. Turkington	3
G. Donnellan	17	G. West	3
N. McLaren	13	L. Cutler	1
M. Squire	12 (1)	M. Fitzgerald	1
R. Knock	11	T. Knight	1
G. Mackenzie	10	P. O'Connor	1
T. Elmes	9 (1)	R. Robinson	1
T. Gammer	9	B. Scanlan	1
S. Francis	8	W. Collacott	— (1)
D. Ross	8	M. Fewing	— (1)
P. Waites	7 (1)	M. McGarr	— (1)
T. Arrow	6		

**Goalscorers:** Donnellan 9, Cook 5, Cripps 4, Williams 3, Felton 2, Squire 2, Ward 2, Fewing 1, Mackenzie 1, Morris 1, Rhoades-Brown 1. Total 31.

CHELSEA'S NEW  
CASH 'N' MATCH



# Lottery



WIN

## £1,000

INSTANTLY

...AND OTHER PRIZES  
FROM £100 TO YOUR  
MONEY BACK

for  
25p

- Two chances on every ticket.
- Tickets available from our Pools Office and around the ground.
- Agents required. If you run a shop or business, or can sell tickets to friends and relatives, we will be pleased to hear from you. Commission paid on all sales. Please write or phone the Pools Office (385-3255) for further details without obligation.

CHELSEA POOLS ASSOCIATION  
Secretary: Tony Green, Chelsea F.C., Stamford Bridge Grounds,  
Fulham Road, London SW6 1HS.

It costs you NOTHING to join Chelsea's "other team" — our Pools Agents. For full details, including benefits, please complete form and post to:  
Chelsea F.C. Pools Association,  
Stamford Bridge Grounds, Fulham Road, London SW6 1HS.  
Applications by letter welcome if you prefer not to cut your programme.

I would like to learn more about a Pools Agency. Please send me details (without obligation). I am over 16.

Name .....

Address .....

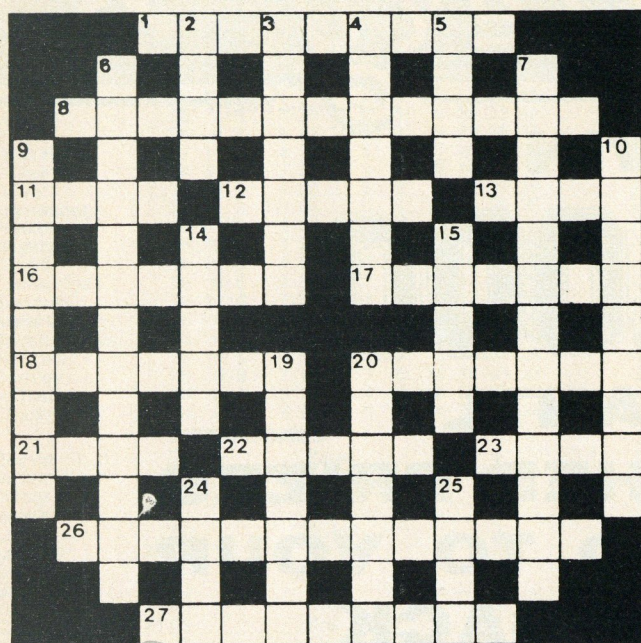
County .....

## FREE ADMISSION TO CHELSEA'S HOME MATCHES

Some of Chelsea's Pools Agents have qualified for free admission to home matches this season. If YOU would like to be among them, fill in the form alongside (without obligation) and receive full details of this and other benefits available.



# Soccer Crossword



(Answers on page 21)

## ACROSS

1. Bridge man since seen at Leicester and Derby. (5, 4)
8. A Sexton team concisely united. (10, 3)
11. John from the Cottage defending White Hart Lane. (4)
12. Alex—a saint—at pre-war Highbury. (5)
13. The Gordon who left the Den for the Rowdies. (4)
16. Angrily passed in front of goal? (7)
17. Forest 'keeper internationally chosen. (7)
18. Capped Gunner from the paddy fields? (3, 4)
20. Mike who's fiery about a couple of pounds. (7)
21. City Gary at The Hawthorns. (4)
22. Home town for St. Johnstone. (5)
23. A Rudi fellow from the Netherlands. (4)
26. Chelsea Cup man of '70 from a south-China inn mix-up. (3, 10)
27. Initially this Spurs man is a JP. (4, 5)

## DOWN

2. Crafty slice of Archie Gemmill. (4)
3. Country (or countries) with an FAI and an IFA. (7)
4. Brewers who offered an Invitation Cup. (7)
5. Lancashire club to inter St. Edmund in Suffolk! (4)
6. Saturday-evening game with a record gate? (5, 2, 3, 3)
7. Striking Mancunian employed with Hammers. (6, 7)
9. Town of the Tangerines. (9)
10. He manages those forever blowing bubbles. (4, 5)
14. Peter nicknamed The Bridge and Dell. (5)
15. It comes first in naming Bonds or Bremner. (5)
19. Just the place for enjoying toffees. (7)
20. Brothers Paul and Ron known at Luton and Maine Road. (5)
24. State of the Cleveland Browns. (4)
25. Tied in lace or a mile south of Portsmouth. (4)

# SCOTT CHESHIRE LOOKS AT

## CHELSEA through the years: season 1957-58

**F**EW chapters in the Chelsea story have produced less incident than this twelfth post-war season. Perhaps the stage for what was to follow was set six days before the official opening of the new campaign in a friendly match against Ajax in Amsterdam, on August 18. The game, won 4-2, marked the return to senior football of centre-half Stan Wicks, absent for nearly a year with knee trouble, and left-winger Frank Blunstone, recovering from a broken leg. In the event the fixture proved to be Wicks' final appearance in football, while Blunstone had the misfortune to suffer a further fracture of the same leg. So, before a ball had been kicked 'in anger,' manager Ted Drake's team-building plans were shattered.

Bravely, he spurned the transfer market (not a single fee was paid out for a player throughout the season), and again placed his faith firmly in the products of the club's youth scheme. He was rewarded to the extent that the side maintained a respectable mid-table position throughout, and only a somewhat undignified 4th round F.A. Cup defeat in a replay against Darlington, then in 21st place in the Third Division North, betrayed the lack of maturity in the side.

Against Preston North End, on February 8, the average age of the forward line was a mere 18 years and 11 months, with Peter Brabrook, Jimmy Greaves, Les Allen, David Cliss and Mike Block all having graduated via the junior ranks, as had 27 others in a professional staff of 47. Apart from one ever-present, goalkeeper Reg Matthews, the only leavening of experience came from full-back Peter Sillett, skipper Derek Saunders, with occasional stiffening provided by Len Casey, Wally Bellett, and three survivors from the championship team, Johnny McNichol, Les Stubbs and amateur Jim Lewis. Fortunately, John Mortimore, after several seasons as a top amateur player, was an instant success at both centre and wing-half.

However, the arrival of Jimmy Greaves on the scene was undoubtedly the highlight of the season. Marking his debut (against Tottenham at White Hart Lane) with a goal, his total of 22 in 35 League outings included four against Portsmouth on Christmas morning and a hat-trick against Sheffield Wednesday. In November he was summoned to stand by for the full England side for their match against Ireland at Wembley and would have become this country's youngest-ever international had Manchester United's forward, Tommy Taylor, not passed a late fitness test.

With almost half of the team having already tasted first-team football, the Juniors reached the final of the F.A. Youth Cup for the first time, having scored 54 goals in eight games along the way. A 5-1 win in the first 'leg' over the Wolves youngsters at Stamford Bridge was very much according to form, only for the Molineux 'cubs' to turn the tables to the tune of 6-1 two days later and gain an unlikely victory. But, with such as Barry Bridges, Bobby Tambling, Ken Shellito and Peter Bonetti in the ranks of the South-East Counties League squad, Chelsea's future was in safe keeping.

## LEAGUE RESULTS

Home		Away
D 0-0	Arsenal	L 4-5
W 4-2	Aston Villa	W 3-1
W 5-1	Birmingham City	D 3-3
L 1-4	Blackpool	L 1-2
D 2-2	Bolton Wanderers	D 3-3
W 6-1	Burnley	L 1-2
W 3-1	Everton	L 0-3
W 2-1	Leeds United	D 0-0
W 4-0	Leicester City	L 2-3
L 1-3	Luton Town	W 2-0
L 2-3	Manchester City	L 2-5
W 2-1	Manchester United	W 1-0
W 2-1	Newcastle United	W 3-1
D 0-0	Nottingham Forest	D 1-1
W 7-4	Portsmouth	L 0-3
L 0-2	Preston North End	L 2-5
W 1-0	Sheffield Wednesday	W 3-2
D 0-0	Sunderland	D 2-2
L 2-4	Tottenham Hotspur	D 1-1
D 2-2	West Bromwich Albion	D 1-1
L 1-2	Wolverhampton Wanderers	L 1-2

**Appearances:**—Allen, L. 9, Bellett, W. 20, Berry, P. 1, Block, M. 20, Brabrook, P. 41, Casey, L. 21, Cliss, D. 9, Compton, J. 3, Dicks, A. 6, Gibbs, D. 4, Greaves, J. 35, Harrison, M. 1, Laverick, R. 1, J. L. Lewis 17, Livingstone, W. 8, MacFarlane, I. 10, Matthews, R. 42, McNichol, J. 13, Mortimore, J. 39, Nicholas, A. 11, Nicholas, B. 9, Saunders, D. 31, Scott, M. 9, Sillett, J. 1, Sillett, P. 40, Stubbs, L. 13, Tindall, R. 36, Whittaker, R. 12.

**Scorers:**—Greaves 22, Tindall 16, Brabrook 8, Lewis 8, Nicholas, A. 6, Block 4, McNichol 4, Sillett, P. 4, Allen 3, Stubbs 3, Bellett 1, Cliss 1, Gibbs 1, Mortimore 1, Opponent 1. = 83.

## HOW THEY FINISHED

	P	W	D	L	F	A	Pts
Wolverhampton W.	42	28	8	6	103	47	64
Preston N.E.	42	26	7	9	100	51	59
Tottenham H.	42	21	9	12	93	77	51
W.B.A.	42	18	14	10	92	70	60
Manchester C.	42	22	5	15	104	100	49
Burnley	42	21	5	16	80	74	47
Blackpool	42	19	6	17	80	67	44
Luton T.	42	19	6	17	69	63	44
Manchester U.	42	16	11	15	85	75	43
Nottingham F.	42	16	10	16	69	63	42
CHELSEA	42	15	12	15	83	79	42
Arsenal	42	16	7	19	73	85	39
Birmingham C.	42	14	11	17	76	89	39
Aston Villa	42	16	7	19	73	86	39
Bolton W.	42	14	10	18	65	87	38
Everton	42	13	11	18	65	75	37
Leeds U.	42	14	9	19	51	63	37
Leicester C.	42	14	5	23	91	112	33
Newcastle U.	42	12	8	22	73	81	32
Portsmouth	42	12	8	22	73	88	32
Sunderland	42	10	12	20	54	97	32
Sheffield W.	42	12	7	23	69	92	31

## F.A. CUP

Jan. 4 (3) v Doncaster Rovers (a) won 2-0 (McNichol 2) Att. 19,888 Rec. £1,800.  
 Jan. 25 (4) v Darlington (H) drew 3-3 (Lewis, Tindall, McNichol) Att. 40,759 Rec. £5,589.  
 Jan. 29 (Replay) v Darlington (a) lost 1-4 (after extra time) (McNichol) Att. 15,150 Rec. £1,999.

**Appearances:**—Brabrook, P. 3, Casey, L. 3, J. L. Lewis 3, MacFarlane, I. 3, Matthews, R. 3, McNichol, J. 3, Mortimore, J. 3, Saunders, D. 3, Sillett, P. 3, Greaves, J. 2, Tindall, R. 2, Allen, L. 1, Stubbs, L. 1.  
**Scorers:**—McNichol 4, Lewis 1, Tindall 1.=6.

## Best wishes to Chelsea for a very successful season—from all the companies within or associated with the Tiger Securities Group.

Tiger Securities Limited/Equity & General Trust Limited/Phoenix Lloyd Limited/Phoenix Lloyd Securities Limited Hong Kong/Phoenix Lloyd Malaysia Sdn. Bhd/Davis Knight & Day/Franks Murrish Appeals Limited/Keeping Marine Services Limited/A. Glemot S.A./Phoenix Lloyd Marine Finance Limited/Phoenix Lloyd Marine Leasing Limited/The Tebbitt Group Limited including Heyman Construction Limited, Self Seal Tape Company Limited, Tape Projects Limited/Starshows Limited/Striped Music Limited/People Management Limited/Peter Walsh Group of Companies/Brodie Sports Limited/Sportsworld/Sturla Holdings Limited including Sturla Finance Limited, Sturla Leasing Limited, Sturdy Finance Limited.



Chairman: D.N. Davies

Deputy Chairman and Group Chief Executive: Robert J. Knight

Directors Sir David Checketts K.C.V.O., S. Durrani, J.G. Hartley, I. Innes-Watson, George C. Magnus, J.J.W. Salmond, R.R. Walker, Secretary: I.L.C. Bexton

Tiger Securities Limited, 78 South Audley Street, London W.1. Telephone: 01-493 3767/8. Telex: 25922 Tiger G.





# LUTON IN PERSON

**JAKE FINDLAY:** Signed from Aston Villa for £100,000 in November 1978 after making 33 League appearances for Villa. A Scot from Blairgowrie, he joined Villa from school and replaced Milija Aleksic (now Spurs) in goal mid-way through last season.

**KIRK STEPHENS:** Formerly with Nuneaton Borough, he followed his former manager David Pleat to Luton for £5,000 in January 1978. Right-back who replaced Paul Price in the back four last season. Born Coventry.

**MAL DONAGHY:** Northern Ireland Under-21 international defender who joined Luton from Irish League club Larne in the summer of 1978 for £15,000. Missed only two League games last season. Born Belfast.

**TONY GREALISH:** Former Orient mid-field player, "Paddy" is a Republic of Ireland international who plays alongside Liam Brady for his country. Joined Luton last August for £150,000. Born Paddington.

**MICK SAXBY:** Became Luton's record signing last July when bought from Mansfield for £200,000 in strong competition with several clubs. Central defender who made 79 League appearances for Mansfield, the town of his birth.

**PAUL PRICE:** Signed for Luton in 1971

and is their longest-serving player. Was almost ready for his League debut in 1974 when he broke a leg, and then broke it again during his recovery. Now Luton captain, and a first-team regular for the past four years. Born St. Albans.

**RICKY HILL:** Talented midfielder player whose parents come from West Indies. An England Youth international, he joined Luton as a 16-year-old and has been a regular first-team player since making debut aged 17. Born London.

**ALAN WEST:** Joined Luton from Burnley in October 1973 for £80,000, then their record fee. Has made nearly 250 League appearances for Luton. Born Hyde.

**BRIAN STEIN:** Luton's second coloured first-team player, he was

signed from non-League Edgware in August 1977. Was a local Health Authority clerk before turning professional. Born South Africa.

**BOB HATTON:** Now with his seventh League club after serving Wolves, Bolton, Northampton, Carlisle, Birmingham and Blackpool. Signed for Luton in July 1978 for £50,000. In more than 450 League games he has scored a total of 169 goals (Town's second top scorer this season with 14).

**DAVID MOSS:** Luton's current leading scorer with 22 goals. Spent nine years at Swindon before signing for Luton in May 1978 for £90,000. Was also their top scorer in 1978-79 (13 goals) despite missing a third of the season through injury. Born Witney.

# LUTON TOWN

## LUTON 1979-1980

### SUMMARY

	P	W	D	L	F	A	Pts
HOME	9	5	3	1	20	10	13
AWAY	10	4	3	3	17	16	11
TOTAL	19	9	6	4	37	26	24

**Back row:** Andrew Pearson, Seamus Heath, Leslie Harriott, Gary Heale (now Reading), Clive Goodyear, Wayne Turner, Gary Sisman (now Hitchin), Alan Ollis.

**Third row:** David Coates (Coach), Mal Donaghy, Mark Aizlewood, John Findlay, Graham Jones, Alan Judge, Kirk Stephens, Brian Stein, John Moore (Coach).

**Second row:** Lil Fuccillo, Ricky Hill, Mick Saxby, Ken Gutteridge (Assistant-Manager), David Pleat (Manager), John Smith (Chief Executive), Bob Hatton, Paul Price, Alan Birchenall (now Trowbridge), David Moss.

**Front row:** Alan Cosby, Robert Johnson, Jan Piotrowski, Tom Murphy, Frank Bunn, Robert Walker, Martin Conquest, John Cole, John Woodward, Neil Madden, Ray Brammer.

## CHELSEA v. LUTON TOWN PAST LEAGUE RESULTS

SEASON	HOME	AWAY
1955-56	0-0	2-2
1956-57	4-1	4-0
1957-58	1-3	2-0
1958-59	3-3	1-2
1959-60	3-0	2-1
1962-63	3-1	2-0
1974-75	2-0	1-1
1975-76	2-2	0-3
1976-77	2-0	0-4
1979-80	Today	3-3

(Chelsea's score given first in each case)





## VISITORS' VIEW

FOR the past two years a "quiet revolution" has been going on at Kenilworth Road, the home of Luton Town. In January 1978 David Pleat, a player there in the previous decade, took over the managership, and although the club had bounced back into Division Two after plummeting from First Division to Fourth between 1960 and 1965, it was in serious financial trouble.

Pleat wasted no time. In a staggering transfer turnover, he reshaped the first team, putting the club back on a profit-making path. And he pulls no punches in finding reasons why Luton could be in the First Division next season. "We have good management here," he says. "We have bought the right players and sold the right players—or rather those who were wrong for the club. I now have men of character who would give loyalty and professionalism to any club they played for."

"If we don't make it back to the First Division this time, then we will next season or the one after. Success is not an overnight job. I would like to arrive at the ground with the team at 2 o'clock on Saturdays and see our fans queueing all the way down the street. Our average gate this season is 12,000, and attracting newcomers is a slow process, but eventually we will bring them in through the quality of our football."

Not everybody believed in David Pleat when he first took over from Harry Haslam, who had moved to Sheffield United. Some of the bigger names departed—the Fitcher twins, Paul and Ron, Jimmy Husband, Phil Boersma, Miliija Aleksic, John Faulkner. Now only skipper Paul

Price, Alan West, Lil Fuccillo, Brian Stein and Ricky Hill remain from the Haslam days.

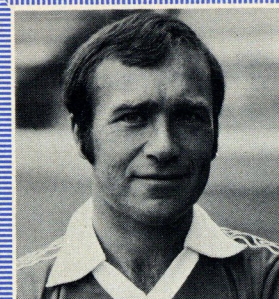
With assistant-manager Ken Gutteridge, Pleat went shopping in the lower divisions. For goalkeeper Jake Findlay he went to Aston Villa's Central League side and signed him for £100,000. In six years at Villa Park he had made only 14 League appearances.

To inject new life in midfield, he signed Eire international Tony Grealish from Orient for £150,000, and a record Luton fee of £200,000 bought centre-half Mike Saxby from Mansfield. Three months ago 21-year-old striker Steve White was signed from Bristol Rovers for £175,000.

In recent years Luton have been renowned for good strikers, among them Malcolm Macdonald, Don Givens, Derek Hales, Vic Halom, Viv Busby. Now they have another in David Moss, whose goals again this season dispel the theory that scoring wingers are a dying breed. With Bob Hatton also well among the goals, it is not surprising that Luton are in the promotion running.

They have taken their turn among seven clubs who have headed the Second Division table this season (the others: Leicester, Notts County, Newcastle, Q.P.R., Birmingham and Chelsea), and they went top again in February after a 4-0 win against Fulham. Then came a seven-match spell without a win (4 draws, 3 defeats) which pushed them down to sixth place at the start of the Easter programme.

In no League match have Luton been beaten by more than two goals all season, and they have an unbeaten League record against London opponents in 1979-80 with five wins and five draws in ten matches against teams from the capital.



## Ron Harris Testimonial Match

Monday, April 21 (7.45 p.m.)

RON HAS DECIDED to invite as many as possible of the 1970 Chelsea F.A. Cup-winning team to play in his Testimonial Match, and among these and other Chelsea favourites invited are:-

Peter Bonetti, David Webb, John Hollins, Garry Stanley, Ian Hutchinson, Peter Osgood, George Graham, Bobby Tambling, Jimmy Greaves, Chris

Garland, David Hay, Bill Garner, Ray Wilkins and Duncan McKenzie.

**Pre-Match Game:** Celebrity XI v. TV Sporting Personalities (6.30 p.m.)

**Special Programme:** A special souvenir programme is being produced for Ron's Testimonial Night, price 50p. If you want to order in advance, please send 70p to cover cost and postage, made payable to Ron Harris, c/o Chelsea F.C. Programmes will be posted immediately after the match.

Everyone at Chelsea would like Ron to get the response from the Supporters that he rightly deserves after serving the Club for 20 years. You can help by writing for your tickets NOW to our Box Office (normal seat prices).

There will be a Buffet-Disco in the Restaurant after the match, and tickets (price £6) are available on written application to Ron Harris, c/o Chelsea F.C. Please enclose correct remittance and stamped return envelope, and apply now, because these tickets are going fast.

### Testimonial Dinner-Dance

To mark the end of his Testimonial Season, Ron will be holding a Dinner-Dance at the London Rooms, Drury Lane, on Sunday, May 4 (7 p.m.). Tickets are priced £18 each, which includes a 3-course meal and unlimited wine throughout the evening, with cabaret and dancing until 1 a.m.

Please apply now for tickets to Chelsea F.C. and make cheques/postal orders payable to the Ron Harris Testimonial Fund.

## CLUB SHOP – PRICE LIST

Please note our only address: Chelsea Club Shop, Chelsea F.C., Stamford Bridge, Fulham Road, London SW6.

	Cost £	Post & packing		Cost £	Post & packing		Cost £	Post & packing
Chelsea Jotter	50p	20p	Chelsea gilt Mirror	8.00	not post	All Sizes (Shiny finish)	3.50	30p
Chelsea Bob hat	1.75	25p	Chelsea Pen (Biro)	50p	18p	Chelsea Official Team Kits		
Chelsea Bar Scarf (orlan)	1.75	30p	Bill Garner Chelsea Pendant			26"–28" 30"–32"	9.00	60p
Satin Scarf (Chelsea are Magic)	90p	25p	—Gilt or Silvered	1.50	20p	34"–36"	11.60	60p
Chelsea Cut Glass hand engraved ashtray	4.00	not post	Car Stickers (two different designs)	30p each	18p	Pendant Key Ring	40p	18p
Chelsea Rosette	30p	20p	Chelsea Car Road Tax Holder	30p	18p	Perspex Key Ring	60p	18p
Chelsea Banner	60p	20p	Car Lighters	1.50	20p	Chelsea Kit bag ("Chelsea" on sides)	4.50	not post
Chelsea Celebration Banner	90p	25p	Chelsea T-Shirt (Small, Medium & Large)	1.75	30p	Hessian Bag with Club emblem	1.00	25p
Chelsea Pennant	50p	20p	Chelsea Glass Pint Tankard	80p	not post	Knitted Hat and Scarf Set	3.50	35p
Large Wing Badge	1.50p	20p	Chelsea Hooded Zipped Sweatshirts (Small, Medium, Large)	8.50	50p	Chelsea Blue/White string weave belt	1.50	20p
Arc Blazer Badge	70p	20p	Chelsea Sweatshirts Dark blue (Small, Medium, Large)	6.00	50p	Charlie Cooke all-weather Cover (Small, Medium, Large)	2.00	50p
Chelsea Patches	50p	20p	Chelsea Valour Sweatshirt Dark blue (Small, Medium, Large)	8.00	50p	Chelsea V-Neck Sweaters with embroidered crest (Small, Medium, Large)	6.50	45p
Chelsea Pendant	70p	20p	Chelsea Valour Sweatshirt Dark blue (Large & ex. Large)	8.50	50p	Chelsea V-Neck Sweaters with embroidered crest Pure Wool (Small, Medium, Large)	12.50	60p
Chelsea Ingot Pendant	1.75p	20p	Chelsea Shirt "The Blues" on sleeve (Small, Medium, Large)	4.50	35p	Chelsea Jumbo Pencil	50p	18p
Chelsea Stick pins sterling Silver engraved "C.F.C."	2.00	20p	Chelsea Official Home Shirts 22"–24"	4.75	45p	Chelsea Leisure Shirts (C.F.C. on pocket)		
Chelsea Enamelled Identity Bracelet	85p	20p	26"–28"	5.50	45p	36"–38" 40"–42"	5.00	35p
Chelsea Lapel badges	50p	18p	30"–32"	6.50	45p	Chelsea Boys' Pants	1.75	25p
Chelsea Mug	70p	not post	34"–36"	6.50	45p	Chelsea Men's Pants	2.15	25p
Chelsea Desk Pads (Refills obtainable 40p)	1.30	25p	38"–40"	7.25	45p	Chelsea Ladies' Briefs	2.00	25p
Chelsea Pendant 9ct gold (without chain)	40.00	not post	Large & Ex. Large	7.50	45p	Chelsea Pure Wool Polo-neck Sweaters	12.50	60p
Chelsea Pendant Sterling Silver (with chain)	12.50	not post	Chelsea Money Boxes	70p	not post	Chelsea Dart Flights	60p	18p
Chelsea Plastic Belt ("Chelsea are Magic")	1.50	20p	Away Shirts from size 30" Green/Yellow	As home shirts above		Chelsea Chrome Watch (with Crest)	12.50	not post
Chelsea Cuff Links with crest —Small	75p	20p	Chelsea Football Shorts					
—Large	1.25	20p						
Chelsea Training Towel	2.80	30p						
Chelsea Pub Mirror	2.50	not post						

VISIT THE CLUB SHOP WHILE YOU ARE HERE TODAY



# HAPPY VALLEY: TWO MORE GOALS & TWO MORE POINTS



Ian Britton scores our first goal at Charlton—a superb volley after good work by Clive Walker.



The winner! Tommy Langley shoots powerfully for a fine goal that sealed our victory.



Peter Rhoades-Brown, who made his first League appearance as substitute at Wrexham on December 29, now takes over from injured Mike Fillery and here he is challenging for the ball at The Valley.

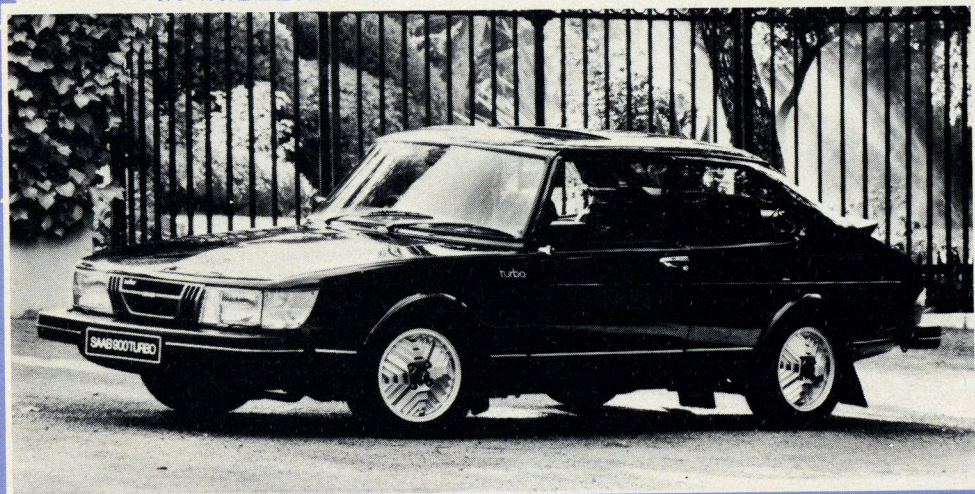


Plenty to celebrate for our two marksmen. Their goals in this match meant that Ian had scored ten in the League this season and Tommy nine.

(Photographs by Hugh Hastings).



# BORN TO LEAD



## The SAAB 900

Saab (UK) Ltd, FREEPOST,  
Saab House, Marlow, Bucks SL7 2BW.

# MICHAEL HART

of the  
EVENING STANDARD  
says

**I**N Nottingham on Wednesday Brian Clough's Forest attempt to extend England's domination of the European Cup. It is now four years since a foreign team won Europe's most prestigious club prize.

Liverpool's big red machine began the English domination in season 1976-77, beating Borussia Moenchengladbach 3-1 in a memorable final in Rome. They won again the following year, beating FC Bruges 1-0 at Wembley.

In 1978-79 they went out in the first round . . . to Forest, who then beat AEK Athens, Grasshoppers of Zurich and Cologne before snatching a 1-0 win over Malmo in the final in Munich.

This week Forest face Ajax, the once great Amsterdam club now re-emerging after several years in the international wilderness, in the first leg of the European Cup semi-final.

In the final analysis what they are playing for is a solid silver trophy, designed by a Swiss goldsmith, standing 30 inches high and, when melted down, worth around £2,000 on the open market.

Of course, the European Cup is much more than that. To win it is the ultimate achievement in European club football. It is the Cup of champions—only winners qualify to enter for it. The only exception to this rule is that the European Cup holders automatically qualify to try and retain their prize.

This is how Forest qualified for this season's competition, because last season Liverpool finished as League Champions.

I have just finished reading a fascinating paperback by Anton Rippon called "European Cup" (Mirror Books, £1.25). It is the story of the competition and, in the opening chapter, I found an intriguing reference to Chelsea.

First, though let me tell you a little about how the European Cup began. As far back as 1927 Henri Delaunay, then secretary of the French F.A., first put the idea to FIFA.

The idea was greeted enthusiastically but there were several insurmountable problems. Air travel, for instance, was in its infancy and most clubs went by sea when they undertook a foreign tour. (Raith Rovers had the distinction of being the only professional team to have been shipwrecked when their voyage to the Canary Islands in 1920 ran into a storm.)

The idea was shelved until 1954 when a French journalist, Gabriel Hanot, editor of the famous daily

sports paper L'Equipe, again raised the concept.

About this time the English Press was hailing Wolves as "Champions of the World" following their defeat of Honved, a side that included Puskas, Kocsis and, in all, six of the all-powerful Hungarian national team.

Hanot was not impressed with the English claims. His paper published plans for a European Cup and, within four months, 16 clubs attended a meeting in Paris and agreed to the draw for the first round.

This was in April 1955. Chelsea, having just won the First Division title for the first and only time, were the English representatives. Some of the other clubs involved in that first meeting included: Real Madrid (Spain), Hibernian (Scotland), AC Milan (Italy) and PSV Eindhoven (Holland).

Anton Rippon takes up the tale: "By the time the next meeting was held in Vienna, England's champions were conspicuous only by their absence. Chelsea had been ordered to withdraw by the Football League on the grounds that the European Cup might cause a major problem for the champions when it came to fulfilling their League fixtures.

"It was, in retrospect, an odd decision when the competition affected only one club and in the light of the Football League's later organisation of its own Football League Cup, as well as its encouraging clubs to take part in all manner of meaningless competitions such as the Anglo-Italian Tournament, the Anglo-Scottish Cup, and the Texaco and Watney competitions, all of which have contrived only to bore the pants off the average fan."

So, Chelsea's one chance of glory in the European Cup came—and went. Perhaps it was as well. They had won the First Division against all the odds and the following season, when they might have been contending with the likes of Real Madrid and AC Milan in the European Cup, they slid to 16th place in the League table.

Little about the European Cup has changed in the last 25 years except, perhaps, the goalscoring rate. In the first season the 29 games played yielded an average 4.38 goals a match. Last season 61 games produced an average of 2.95 goals a match.

Real Madrid scored 31 goals in seven games to win the Cup in 1959-60. Last season Forest hit 19 goals in nine games.

So far this season they have scored 10 goals in six games and, after their momentous win away to Dynamo Berlin in the last round, look capable of keeping the Cup in England for another season.



# HATS OFF to JOE BAMBRICK

A CHELSEA STALWART STILL GOING STRONG



By Malcolm Brodie

Sports Editor of the Belfast Telegraph

FOR Joe Bambrick former Ireland, Chelsea and Linfield centre-forward, it was a sentimental journey to Celtic Park, Belfast, earlier this year—on February 1 to be exact. It was there 50 years ago to the day that he hit six goals in Ireland's 7-0 win over Wales to establish an individual international scoring record which still stands.

Bambrick, now 75, walked across the pitch and gazed at the rebuilding work on the stadium operated as a greyhound track since Belfast Celtic left Irish League football in 1949. With sleet falling, he surveyed the scene. Joe never says much. His economy of words is almost as notorious as his scoring feats.

Joe's immediate opponent that February day in 1930 was Fred Keenor. "Six kicks at the ball and you get six goals" chided the Welsh captain. "Wait a minute Taffy—one of them was a header" Joe replied. That irritated Keenor even more.

Did Joe think that record would be beaten? "Yes, I felt it would have gone long before now, with England meeting countries such as Cyprus and Malta" he said. "I suppose it eventually will. Good luck to the lad who does it. I hope I'm around to congratulate him".

Few players have made a happier start with a new club than did Joe Bambrick when he moved from Linfield to Chelsea on Christmas Eve, 1934. Next morning Aston Villa were beaten 2-0 in the First Division at Stamford Bridge and, with Bambrick

helping in both goals, Chelsea supporters went home to their Christmas dinners delighted with the "present" the club had bought them in the transfer market.

In the return match on Boxing Day, Chelsea went to Villa Park and did even better, winning 3-0. Bambrick (real name James, by the way, although he was known throughout his football as Joe) scored the first goal and made the second.

In 21 League matches for Chelsea that season Bambrick scored 15 goals, four of them in a 7-1 victory over Leeds United. The following season (1935-36) he was Chelsea's top League scorer, again with 15 goals.

Throughout his career, Joe was a centre-forward. Before joining Linfield he gained an amateur cap during the one season he played for Glentoran, and in one season for Linfield he hit 94 goals.

Bambrick was essentially a brainy footballer, relying on thoughtful play to carry him into scoring positions. "Football is played much more deliberately in Ireland," he said after settling into the English First Division with Chelsea. "I soon discovered the need for quicker thought and action here in the Football League."

Bambrick won four of his 11 caps while with Chelsea. His service to the London club spanned three years and four seasons, and he scored a total of 33 goals in 59 First Division appearances for them before being transferred to Walsall in 1937-38.



# CHELSEA



## OFFICIAL SUPPORTERS' CLUB

Headquarters: Chelsea F.C., Stamford Bridge, Fulham Road, London SW6 1HS

President: Ron Harris

Chairman: D. Mears (Director, Chelsea F.C.) Secretary & Treasurer: A. W. Green.

Committee: I. Jenkins, T. Turner, Mrs. V. Leslie, J. Toland, G. Walker, G. Newland, Miss S. Marson, Mrs. B. Lee.

It's for YOU to decide . . .

### WHO WILL BE OUR 'PLAYER OF THE YEAR'?

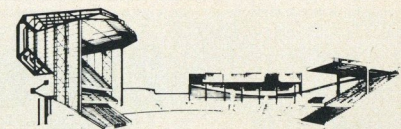
THE Official Supporters' Club "Player of the Year" Dinner-Dance will be held at the Cafe Royal on the night of Saturday May 3, with Sebastian Coe—a keen follower of Chelsea—the guest of honour.

The latest Newsletter, which you should now have received, contains your P.O.Y. voting form, and applications for Dinner-Dance tickets are now being accepted.

Tickets are £10.50 each, and are available only to Members of the Official Supporters' Club and their guests.

Put the date in your diary—May 3, and to make sure you are present on Chelsea F.C.'s big social night of the year, book your tickets now. Please make cheques/postal orders payable to Chelsea Official Supporters' Club and enclose stamped, return envelope.

## MEMBERSHIP APPLICATION



Please complete A or B, whichever is applicable

### A: NEW MEMBERS

I wish to become a member of Chelsea F.C. Official Supporters' Club for season 1980-81 in the category as follows (delete as necessary):

- (i) Adult member—subscription £3.
- (ii) Senior citizen rate (age over 65 on Aug. 16, 1980)—subscription £1.
- (iii) Junior rate (age under 16 on Aug. 16, 1980)—subscription £1.

- I enclose cheque/postal order (No . . . . .) for £ . . . . . made payable to Chelsea Official Supporters' Club
- I enclose two passport-size photographs of myself, with name on reverse side (membership cannot be accepted without receipt of such photographs).

Please write in BLOCK CAPITALS:—

Name (Mr/Mrs/Ms) . . . . .

Address . . . . .

Telephone . . . . .

Signature . . . . .

### B: RE-ENROLMENTS

I wish to renew my membership of Chelsea Official Supporters' Club for season 1980-81 in the category as follows (delete as necessary):

- (i) Adult member—subscription £2.
- (ii) Senior citizen rate (age over 65 on Aug. 16, 1980)—subscription £1.
- (iii) Junior rate (age under 16 on Aug. 16, 1980)—subscription £1.

- My existing membership number is . . . . .
- I enclose cheque/postal order (No . . . . .) for £ . . . . . made payable to Chelsea Official Supporters' Club.
- I enclose my membership card for amendment to include 1980-81 registration.

FOR OFFICIAL USE

No.

Post to the Secretary,  
Chelsea F.C. Supporters' Club,  
Chelsea Football Club,  
Stamford Bridge Grounds,  
Fulham Road, London  
SW6 1HS.

PLEASE ENCLOSE STAMPED, SELF-ADDRESSED ENVELOPE.



# A Winning Team

**ACARTALE**  
*the Decorating Specialists*

**ACARTALE**  
*Builders Ltd.*

**W.J.R. ENTERPRISES**

**218 Earlsfield Road,  
London, S.W.18**

*01-874 9087*

**Members of the W.J. Rowe Group**

## A LETTER THAT CONCERNS US ALL

Dear Sir,

I found Michael Hart's article in the Chelsea v Burnley programme particularly interesting. Whilst I agree with most of what he said, I think he is wrong on the point concerning the influence of TV on dwindling attendance figures. I believe there are many missing supporters who would prefer to enjoy the "real thing" at a match rather than a TV edited version.

In my case I had not been to Chelsea for three years, but my 8-year old son was so keen to see them play that I brought him to the Chelsea v Cardiff game, his first big match. He was thrilled by it all; the size of the stadium, the floodlights, actually seeing his favourite team play (and win), all of it, in his opinion, much better than the TV.

But two things were not so good. The admission price—a total of £3.60 because my 14-year old daughter is also a Chelsea fan—just to stand on the terraces. But more important still was the threat of trouble. The police were everywhere, obviously prepared for the worst, and so were the mindless "yobos" wandering around the terraces clearly looking for ways of getting at the handful of visiting Cardiff and Burnley supporters and saying what they would do to them if they got the chance.

*How on earth can someone like myself bring his family to matches when these sick individuals, mouthing all kind of obscenities, are part and parcel of today's football crowd?*

*My boy wanted to see the derby games against Orient and QPR, but there's no way I'm going to risk it. I shall have to choose our visits to Chelsea on the basis of possible crowd trouble and not which games we would really like to see.*

Michael Hart is certainly right in saying that hooliganism is responsible for a loss of crowds and consequently a loss of revenue. Television offers a safer alternative to watching football but it can never be a substitute for real football enthusiasts. Maybe hooliganism will eventually be beaten, the sooner the better as far as I'm concerned. Then and only then will more people like myself feel it safe to bring our families regularly to matches, always providing of course we can still afford it!

This letter may be too long for publication in your programme, but I thought you would be interested in a family-man's viewpoint, one which I am sure must be echoed a hundred times over by supporters in similar circumstances.

Good luck in the promotion race.

MIKE DORÉ

Mitcham, Surrey

● *Our thanks to Mr Doré for expressing the "family" viewpoint so well. Like most other clubs, we know that a bad-language problem seriously afflicts many of our matches, not only on the terraces but in the Stands as well; to pretend otherwise would be naïve to the extreme. We hope the foul-mouthed will learn something from this letter, and respond to it.*



## OPEN DAY SMILES

Sid Jenkins, Chief Steward, introduces Kim Harris (left) and Carole Glover to Assistant-Manager Bobby Gould, who is delighted to oblige with his autograph.





THE first signing for Chelsea by Geoff Hurst when he joined us from Tottenham on January 4, Colin is well experienced in the mixed fortunes of football. When he joined Spurs from Torquay in October 1977, he made headlines within two days by scoring four goals in a 9-0 win against Bristol Rovers. But because of a ham-string injury, he had to wait two months for his Chelsea debut and then, at Fulham in only his second game for us, he suffered a recurrence of that trouble. Fortunately, it has responded to physio Eddie Franklin's treatment sooner than expected, and we hope to have Colin available for the season's closing matches. Born at Torquay, he is 23 and at a height of 6ft. 1in. brings the added quality of strength in the air to our attack.

MATCH SUMMARIES



FOOTBALL LEAGUE

Saturday, March 29.  
Beat **Charlton Athletic** (Away) 2-1. Half-time: Winning 1-0. Attendance: 16,425.  
**Charlton:** Johns; Hazell, Walker (P), Tydeman, Berry, Madden, Shaw, Hales (D), Robinson, Gritt, Powell.  
Scorer: Tydeman.  
**Chelsea:** Borota; Locke, Rofe, Hales (K), Pates, Nutton, Britton, Rhoades-Brown (Chivers), Langley, Walker (C), Harris.  
Scorers: Britton, Langley.  
Referee: Mr. P. Scott (Nottingham).  
*Victory took our sequence to five wins (all by the odd goal) in six matches and increased our Second Division lead to three points with seven games left. Britton scored our first goal—his tenth of the season—after 26 minutes, but Charlton equalised through*

*Tydeman direct from the second-half kick-off. After we had survived some near things, Langley shot the goal, eight minutes from time, which brought our 21st victory of the season. Walker had an "assist" in both goals, and this win meant we had taken 11 points out of 12 from visits to London-area clubs this season.*

FOOTBALL COMBINATION

Monday, March 24.  
**Reading v Chelsea** postponed (pitch unfit).  
Saturday, March 29.  
Drew with **Hereford United** (Home) 1-1. Half-time: Winning 1-0.  
Team: R. Knock; D. Jasper, P. Williams, Wilkins, Sparrow, Sulley, T. Elmes, Clare, Johnson, Frost, G. Donnellan.  
Scorer: Johnson.

S.E. COUNTIES LEAGUE—DIV. I

Saturday, March 29.  
Lost to **Q.P.R.** (Home—Molesey) 2-3. Half-time: Losing 1-2.  
Team: S. Francis, B. White, G. Mackenzie, T. Thomas, P. Morris, P. Maskell, D. Ross, P. Ward, A. Cook, J. Felton, G. West.  
Scorers: Cook, Mackenzie (penalty).

PRESTON ON SATURDAY

Chelsea Official Supporters' Club members planning to travel to Preston by rail are advised that British Rail have informed us that, because of F.A. Cup semi-final day demands on their rolling stock, we shall be restricted to running one special train on Saturday.

44 YEARS AGO TODAY

ON Easter Monday, April 13, 1936 an unknown player of Luton Town—later to serve Chelsea—wrote his name into football history with a record that stands to this day. He was 22-year-old Joe Payne, then a Luton reserve half-back. Faced by injury problems, manager Ned Liddell called on him to play as emergency centre-forward at home to Bristol Rovers in Division Three (South). The result was Luton 12, Bristol Rovers 0, but even that was personally dwarfed as a sensation by Payne, who himself scored TEN of the goals. Three came in the first half, seven in the second; seven were shots and three were headers. Nobody before had ever scored ten in a Football League match; no-one has done so since. Joe never went back to wing-half or the reserves. In the following promotion season (1936-37) he scored 55 goals in 39 League

matches—another Luton club record that still stands—and in March 1938 he was transferred to Chelsea for £2,000 (what would a 55-goals-in-a-season player fetch now?) Payne's best years for Chelsea were during the war, in which he served in the R.A.F. He helped us to reach Wembley in the League South Cup Finals of 1944 (Chelsea 1, Charlton 3) and 1945 (Chelsea 2, Millwall 0) and in season 1944-45 he scored 39 goals in 25 League South games for us. In December 1946, Joe moved to West Ham and continued with Millwall and Worcester City before injury ended his career. What was "Ten-Goal Payne's" reward for the all-time record feat he performed 44 years ago today? Six pounds—four for his weekly wage, the other two pounds a win bonus!



SEAT RESERVATIONS



EAST STAND

- Lower Tier Centre £2.90
- Lower Tier Wings £2.40
- Middle Tier Centre £5.30
- Middle Tier Inner Wings £4.25
- Middle Tier Outer Wings £3.45
- Upper Tier Front Centre £4.25
- Upper Tier Rear Centre £2.90
- Upper Tier Front Wings £3.45
- Upper Tier Rear Wings £2.40

WEST STAND

- Centre £3.45
- Wings £2.90

**Note:** Where seats at £2.90 and £3.45 are requested in a particular Stand, we will endeavour to supply as required. However, we reserve the right to send tickets for seats at the same price in the other Stand, should it be necessary.

**Postal Applications** will be accepted one calendar month prior to the date of the match. Please enclose a stamped, addressed envelope with the correct remittance to ensure prompt return of tickets ordered.  
**Important:** When sending for tickets, always quote your full name and address in your letter. This enables our Ticket Office staff to help you should tickets go astray. All postal applications should be addressed to: Ticket Office, Chelsea F.C., Stamford Bridge Grounds, Fulham Road, London SW6 1HS.  
**Personal application** for tickets will be accepted seven days prior to the match. Ticket Office hours, Monday-Friday, 9.30 a.m.-4 p.m.

GROUND ADMISSION

Adults £1.60. Senior Citizens and Juveniles (under-14) £1. Transfer to uncovered West Stand Open Enclosure inside the ground 50p.

CROSSWORD ANSWERS

- ACROSS:**—1. David Webb. 8. Manchester Utd. 11. Lacy. 12. James. 13. Jago. 16. Crossed. 17. Shilton. 18. Pat Rice. 20. Fi-II-ery. 21. Owen. 22. Perth. 23. Krol. 26. Ian Hutchinson. 27. John Pratt.
- DOWN:**—2. Arch. 3. Ireland. 4. Watneys. 5. Bury. 6. Match of the Day. 7. Stuart Pearson. 9. Blackpool. 10. John Lyall. 14. Ossie. 15. Billy. 19. Everton. 20. Futchler. 24. Ohio. 25. Knot.

Published by Chelsea Football Club, Stamford Bridge Grounds, Fulham Road, London SW6 1HS.  
Programme Editor: Albert Sewell. Design by Harry Matthey. Printed by Samuel Sidders & Son Ltd., London NW6.



Goalscorers shown in small numerals  
S=Substitute \* =Player replaced.  
● =Non-playing substitute  
p=Penalty

Goalscorers shown in small numerals S=Substitute. *=Player replaced. ● = Non-playing substitute p=Penalty				Date	Opponents	Venue	Result	Attendance	Points Total	League Position	Borota	Locke	Wilkins	Nutton	Droy	Harris	Britton	Bannon	Langley	Johnson	Fillyer	Aylott	Stride	Burnstead	Chivers	Sitton	Sparrow	Walker	Osgood	Frost	Pates	Hales	Rhodes-Brown	Iles	Roie	Lee	Viljoen	Own Goal	
Aug.	18	Sunderland	H	D 0-0	23,636	1	-	1	2	3	4	5	6	7	8	9	10	11	●	3	S																		
	20	West Ham	A	W 1-0	31,627	3	-	1	2	4	4	5	6	7	8	9	10	11	●	3	S																		
	25	Wrexham	H	W 3-1	18,732	5	-	1	2	4	4	5	6	7	8	9	10	11	●	3	S																		
Sept.	28	Plymouth (LC 2-1)	A	D 2-2	10,802	5	-	1	2	4	4	5	6	7	8	9	10	11	●	3	S																		
	1	Newcastle	A	L 1-2	25,320	5	-	1	2	3	3	5	6	7	8	9	10	11	●	3	S																		
	4	Plymouth (LC 2-2)	H	L 1-2	14,112	5	-	1	2	3	3	5	6	7	8	9	10	11	●	3	S																		
	8	Birmingham	H	L 1-2	17,182	5	-	1	2	3	3	5	6	7	8	9	10	11	●	3	S																		
	15	Shrewsbury	A	L 0-3	9,271	5	-	1	2	3	3	5	6	7	8	9	10	11	●	3	S																		
	22	Watford	H	W 2-0	21,480	7	-	1	2	3	3	5	6	7	8	9	10	11	●	3	S																		
	29	Cambridge U.	A	W 1-0	8,792	9	-	1	2	3	3	5	6	7	8	9	10	11	●	3	S																		
Oct.	6	Burnley	A	W 1-0	8,341	11	-	1	2	3	3	5	6	7	8	9	10	11	●	3	S																		
	13	Bristol R	H	W 1-0	18,236	13	-	1	2	3	3	5	6	7	8	9	10	11	●	3	S																		
	20	Cardiff	A	W 2-1	16,328	15	-	1	2	3	3	5	6	7	8	9	10	11	●	3	S																		
	27	Fulham	H	L 0-2	30,567	15	-	1	2	3	3	5	6	7	8	9	10	11	●	3	S																		
Nov.	3	Sunderland	A	L 1-2	24,988	15	-	1	2	3	3	5	6	7	8	9	10	11	●	3	S																		
	10	Orient	A	W 7-3	13,005	17	-	1	2	3	3	5	6	7	8	9	10	11	●	3	S																		
	14	West Ham	H	W 2-1	30,859	19	-	1	2	3	3	5	6	7	8	9	10	11	●	3	S																		
	17	Charlton	H	W 3-1	23,035	21	-	1	2	3	3	5	6	7	8	9	10	11	●	3	S																		
	24	Notts Co.	A	W 3-2	12,646	23	-	1	2	3	3	5	6	7	8	9	10	11	●	3	S																		
Dec.	1	Preston	H	W 2-0	21,192	25	-	1	2	3	3	5	6	7	8	9	10	11	●	3	S																		
	8	Oldham	A	L 0-1	10,201	25	-	1	2	3	3	5	6	7	8	9	10	11	●	3	S																		
	15	Swansea C.	H	W 3-0	18,065	27	-	1	2	3	3	5	6	7	8	9	10	11	●	3	S																		
	18	O.P.R.	A	D 2-2	26,598	28	-	1	2	3	3	5	6	7	8	9	10	11	●	3	S																		
	26	Leicester	H	W 1-0	25,320	30	-	1	2	3	3	5	6	7	8	9	10	11	●	3	S																		
	29	Wrexham	A	L 0-2	15,641	30	-	1	2	3	3	5	6	7	8	9	10	11	●	3	S																		
1980	1	Luton	A	D 3-3	19,717	31	-	1	2	3	3	5	6	7	8	9	10	11	●	3	S																		
Jan.	12	Newcastle	H	W 4-0	32,281	33	-	1	2	3	3	5	6	7	8	9	10	11	●	3	S																		
	14	Wigan (F.A. Cup-3)	H	L 0-1	22,300	33	-	1	2	3	3	5	6	7	8	9	10	11	●	3	S																		
Feb.	2	Shrewsbury	H	L 2-4	18,120	33	-	1	2	3	3	5	6	7	8	9	10	11	●	3	S																		
	9	Watford	A	W 3-2	24,716	35	-	1	2	3	3	5	6	7	8	9	10	11	●	3	S																		
	16	Cambridge U	H	D 1-1	17,112	36	-	1	2	3	3	5	6	7	8	9	10	11	●	3	S																		
	23	Bristol Rovers	A	L 0-3	14,176	36	-	1	2	3	3	5	6	7	8	9	10	11	●	3	S																		
Mar.	1	Cardiff	H	W 1-0	18,449	38	-	1	2	3	3	5	6	7	8	9	10	11	●	3	S																		
	8	Fulham	A	W 2-1	22,348	40	-	1	2	3	3	5	6	7	8	9	10	11	●	3	S																		
	11	Birmingham	A	L 1-5	27,297	40	-	1	2	3	3	5	6	7	8	9	10	11	●	3	S																		
	15	Burnley	H	W 2-1	16,188	42	-	1	2	3	3	5	6	7	8	9	10	11	●	3	S																		
	22	Orient	H	W 1-0	19,706	44	-	1	2	3	3	5	6	7	8	9	10	11	●	3	S																		
	29	Charlton	H	W 2-1	16,425	46	-	1	2	3	3	5	6	7	8	9	10	11	●	3	S																		
Apr.	2	O.P.R.	H				-	1	2	3	3	5	6	7	8	9	10	11	●	3	S																		
	5	Leicester	A				-	1	2	3	3	5	6	7	8	9	10	11	●	3	S																		
	7	Luton Town	H				-	1	2	3	3	5	6	7	8	9	10	11	●	3	S																		
	12	Preston	A				-	1	2	3	3	5	6	7	8	9	10	11	●	3	S																		
	19	Notts Co.	H				-	1	2	3	3	5	6	7	8	9	10	11	●	3	S																		
	26	Swansea C.	A				-	1	2	3	3	5	6	7	8	9	10	11	●	3	S																		
May	3	Oldham	H				-	1	2	3	3	5	6	7	8	9	10	11	●	3	S																		

with the A.59. Take the A.59 (left) to Preston and enter Preston on the A.59 (Preston New Road). Fork right at the top of the hill, taking the ring road to the Preston ground at Deepdale (about a mile). Watch out for any special signs, including diversions.

Your nearest RAC Offices, in London, are at: RAC House, Lansdowne Road, Croydon CR9 2JA; or at: RAC Northern Home Counties, 130, St. Albans Road, Watford, Herts.

**BY ROAD TO PRESTON ON SATURDAY**

**Compiled by the Royal Automobile Club**

Leave from Chiswick Roundabout and follow the North Circular (A.406) to the roundabout at Staples Corner. Follow the signs to the start of the M.1 and continue northward to Intersection 19. Follow the M.6 to Intersection 31 (Samlesbury), the junction

BY ROAD TO PRESTON ON SATURDAY

Compiled by the Royal Automobile Club

Leave from Chiswick Roundabout and follow the North Circular (A.406) to the roundabout at Staples Corner. Follow the signs to the start of the M.1 and continue northward to Intersection 19. Follow the M.6 to Intersection 31 (Samlesbury), the junction

with the A.59. Take the A.59 (left) to Preston and enter Preston on the A.59 (Preston New Road). Fork right at the top of the hill, taking the ring road to the Preston ground at Deepdale (about a mile). Watch out for any special signs, including diversions. Your nearest RAC Offices, in London, are at: RAC House, Lansdowne Road, Croydon CR9 2JA; or at: RAC Northern Home Counties, 130, St. Albans Road, Watford, Herts.

FOOTBALL COMBINATION

S. E. COUNTIES LEAGUE—DIV. 1

S. E. COUNTIES LEAGUE—DIV. 2

Date	Opponents	Venue	Result	Points Total	Position	Date	Opponents	Venue	Result	Points Total	Position
Aug 18	Arsenal	A	W 1-0	2	-	Aug. 18	West Ham United	A	L 1-2	0	-
22	West Ham United	H	W 2-1	4	-	25	Charlton Athletic	A	L 1-4	0	-
25	Orient	A	L 1-2	4	-	Sept. 1	Fulham	A	L 3-4	0	-
Sept. 1	Southampton	H	W 3-1	6	-	8	Portsmouth	A	W 2-0	2	-
8	Birmingham City	A	W 2-1	8	-	15	Watford	A	W 1-0	4	10
15	Plymouth Argyle	H	W 5-3	10	2	22	Crystal Palace(L.Cup)	H	D 2-2	4	10
19	Oxford United	A	D 1-1	11	3	29	Norwich City	H	L 1-2	4	13
22	Swindon Town	A	W 2-0	13	3	6	Ipswich Town	A	D 0-0	5	12
29	Norwich City	H	L 0-2	13	3	13	Crystal Palace(L.Cup)	A	L 0-2	5	14
Oct. 6	Reading	H	W 3-2	15	5	20	Gillingham	A	L 2-3	5	14
10	West Ham United	A	L 2-3	15	6	27	Tottenham Hotspur	H	L 2-3	5	14
17	Cardiff City	A	W 2-0	17	4	30	Crystal Palace	H	L 0-2	5	14
20	Bristol Rovers	H	D 2-2	18	6	Nov. 3	Portsmouth	H	L 1-3	5	15
24	Leicester City	A	W 2-0	20	2	24	Arsenal	H	L 0-3	5	15
27	Fulham	A	W 2-1	22	2	1	Orient	A	D 0-0	6	14
Nov. 3	Arsenal	H	W 1-0	24	2	8	Charlton Athletic	H	L 0-2	6	14
6	Leicester City	H	W 1-0	26	1	15	Tottenham Hotspur	A	D 1-1	7	14
14	Hereford United	A	L 2-3	26	1	29	Norwich City	A	L 0-2	7	15
19	Tottenham Hotspur	H	W 3-2	28	1	1980					
24	Luton Town	H	D 0-0	29	2	5	Gillingham	H	L 2-4	7	15
Dec. 1	Crystal Palace	A	W 1-0	31	1	Jan. 26	Orient	H	L 1-3	7	15
8	Bristol City	H	W 2-0	33	1	26	Q.P.R.	A	D 3-3	8	15
14	Ipswich Town	A	W 1-0	35	1	Feb. 2	Millwall	H	D 1-1	9	15
19	Q.P.R.	- H	W 4-0	37	1	16	Southend United	A	L 2-3	9	15
1980						Mar 1	Fulham	H	W 1-0	11	15
12	Southampton	A	D 1-1	38	1	8	Southend United	H	D 1-1	12	15
Jan. 19	Birmingham City	H	W 3-2	40	1	15	Watford	H	L 3-4	13	15
30	Crystal Palace	H	L 0-2	40	2	22	Millwall	A	D 0-0	13	15
Feb. 16	Norwich City	A	W 3-1	42	3	29	Q.P.R.	H	L 2-3	13	15
20	Plymouth Argyle	A	L 0-1	42	3	8	Arsenal	A			
23	Cardiff City	H	W 3-1	44	2	12	Ipswich Town	H			
26	Oxford United	H	D 1-1	45	2						
Mar. 1	Bristol Rovers	A	D 0-0	46	3						
8	Fulham	H	D 1-1	47	1						
10	Orient	H	L 0-1	47	1						
22	Tottenham Hotspur	A	W 2-0	49	2						
Apr. 9	Hereford United	A	D 1-1	50	2						
19	Q.P.R.	A									
23	Luton Town	A									
26	Swindon Town	H									
28	Ipswich Town	A									
May 3	Reading	H									
	Bristol City	A									

SOUTHERN JUNIOR FLOODLIGHT CUP

Oct. 15 (2) Aston Villa

A L 1-2

-

F.A. YOUTH CUP

Nov. 27 (2) West Ham Utd.

A L 1-3





# Line - Up



## CHELSEA

**COLOURS:**—Shirts: Royal Blue with White Collar & Cuffs. Shorts: Royal Blue with White Seam. Stockings: White.

- 1 Petar BOROTA
- 2 Graham WILKINS
- 3 Dennis ROFE
- 4 Kevin HALES
- 5 Colin PATES
- 6 Micky NUTTON
- 7 Ian BRITTON
- 8 Peter RHOADES-BROWN
- 9 Tommy LANGLEY
- 10 Clive WALKER
- 11 Ron HARRIS

Sub:

## LUTON TOWN

**Colours:**—Shirts: White with Navy Blue & Orange Stripes on left side. Shorts: Navy Blue with Orange & White Stripe. Stockings: White with Orange & Navy Blue Turnover.

- 1 Jake FINDLAY
- 2 Kirk STEPHENS
- 3 Mal DONAGHY
- 4 Tony GREALISH
- 5 Mick SAXBY
- 6 Paul PRICE
- 7 Ricky HILL
- 8 Alan WEST
- 9 Brian STEIN
- 10 Bob HATTON
- 11 David MOSS

Sub:

**Referee:** Mr. TOM BUNE (Cranleigh, Surrey)

**Linesmen:** Mr. R. E. Chaffer (Windsor)—Red Flag  
Mr. E. L. Hopper (Maidstone)—Orange Flag



# next home matches

Saturday, April 19 (3 p.m.)  
**NOTTS COUNTY**  
Football League

Monday, April 21 (7.45 p.m.)  
**CHELSEA v CHELSEA PAST XI**  
Ron Harris, Testimonial

Wednesday, April 23  
(2.15 p.m.)  
**SWINDON TOWN**  
Football Combination

## THANK YOU, SPONSORS

For the third successive home match, TRAFALGAR TRAVEL are our sponsors today. We would like them to know how much their support has been appreciated by Chelsea F.C. again this season, and in welcoming their officials and guests, we wish them an enjoyable and most successful afternoon at Stamford Bridge.