

LUTON TOWN

OFFICIAL
MATCHDAY
PROGRAMME

FOOTBALL LEAGUE DIVISION TWO
Saturday 29th March, 1980
LUTON TOWN v BURNLEY



PRICE
30p



TODAY'S MATCH SPONSOR
IS

**BEDFORDIA PLANT
LIMITED**

Inside today:
David's Diary
Opponents
In Focus
Reserve Report

**ARE YOU ON
THE ITALIAN
SHORTLIST**
(See page 11)

Q.P.R. 2 LUTON TOWN 2

Results at the top of the Second Division last Saturday threw the promotion race wide open again — helped by our fightback at Loftus Road which won a valuable point with a 2-2 draw. It's almost there . . . Brian Stein leaps to head the first. It's almost there . . . Ricky Hill repeats the treatment for the equaliser. It's there . . . 'keeper Chris Woods can only watch as Hill's header enters the net.

Pictures: Keith Dobney, Evening Post-Echo



IN FOCUS...IN FOCUS...

LET'S REVOLUTIONISE OUR GAME

Dwindling attendances in the Football League have set the danger signals flying throughout England. Many clubs have shown alarm because support shows no sign of increasing, except in the cases of those who are involved in the various promotion issues. The problem is one which must be attacked immediately and, this afternoon, Luton's chief executive John Smith, sets out his plans for a radical change in the Football League's structure designed to rekindle support through the turnstiles.

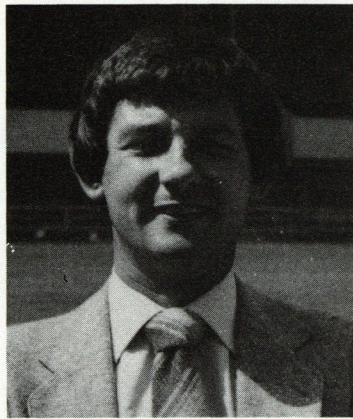
"The introduction of three up and three down several seasons ago — designed to increase support — has failed to achieve the necessary result. It is time to investigate new methods of producing additional revenue through the turnstiles at a time when there is a major interest in soccer from the outside.

"I believe people are interested in our national game, but it is the responsibility of the clubs and authorities to implement a new structure and take the negative things out of soccer in an attempt to stimulate some additional much-needed interest.

"Take, for example, clubs who are destined to spend most of the season in a mid-table position. What incentive have they? They naturally want to protect their position and I believe that could have a direct bearing on negative football. It is time for a complete change of the Football League's format and, although my ideas may have a radical bearing, I believe it would re-stimulate interest at all levels.

"I would introduce a system of eight Football League divisions of 12 clubs. It would mean 96 clubs — and increase from the current 92 — and the four new clubs could be recruited from the Football Alliance, giving them the incentive to play for something throughout their season.

"Each season, clubs would be seeded by a committee from one to 96 and placed in each division. It would mean a mixture of



First, Second, Third and Fourth Division clubs being in the same section and would obviously throw up the possibility of, say, Hartlepool playing at home against Manchester United and similar situations involving other clubs at both ends of the Football League.

"The existence of the competition in itself would stimulate interest in increased attendances, although I admit there could be problems. But if Manchester United, for example, were at home to Rochdale, that would produce a Cup-tie atmosphere and still maintain healthy revenue. Under my system, eight divisions of 12 clubs would produce only 22 matches in the first stage. The second stage would involve the top six in each division being re-seeded into four divisions of 12 with the bottom six being allocated places in another six divisions.

"The benefit of that is obvious — every club would play different opponents in the second half of the season to remove one of the current biggest complaints of a repetitive situation. Forty-four matches would produce a play-off stage where the top three of the first four divisions and the

top one from the other four would enable 16 clubs to qualify for the ultimate championship in quarter, semi and final stages.

"The two winners could possibly play at Wembley to decide the championship or, alternatively, meet on a two-legged basis. But there are bound to be difficulties. Could the smaller clubs cope with the prospect of playing First Division clubs at home in their cramped stadiums?

"My system could include the possibility of Crewe playing at home to Liverpool. It would undoubtedly provide the Fourth Division side with an automatic capacity home crowd. But I believe Liverpool would object because their share of the receipts would not match their revenue from current away games.

"But there is no doubt we need a radical change — and we need it now before it is too late and too much damage is done. Our Fourth Division clubs are not in favour of regionalisation to save travelling costs. If they were, I believe it would have been implemented by now.

"Anything which can provide additional interest must be a good thing for the game. New opponents, especially in each half of the season, is in my opinion a much-needed and very important necessity. Action now, or at least the thought and discussion at top level of radical changes, could save attendances from shrinking to a new all-time low figure.

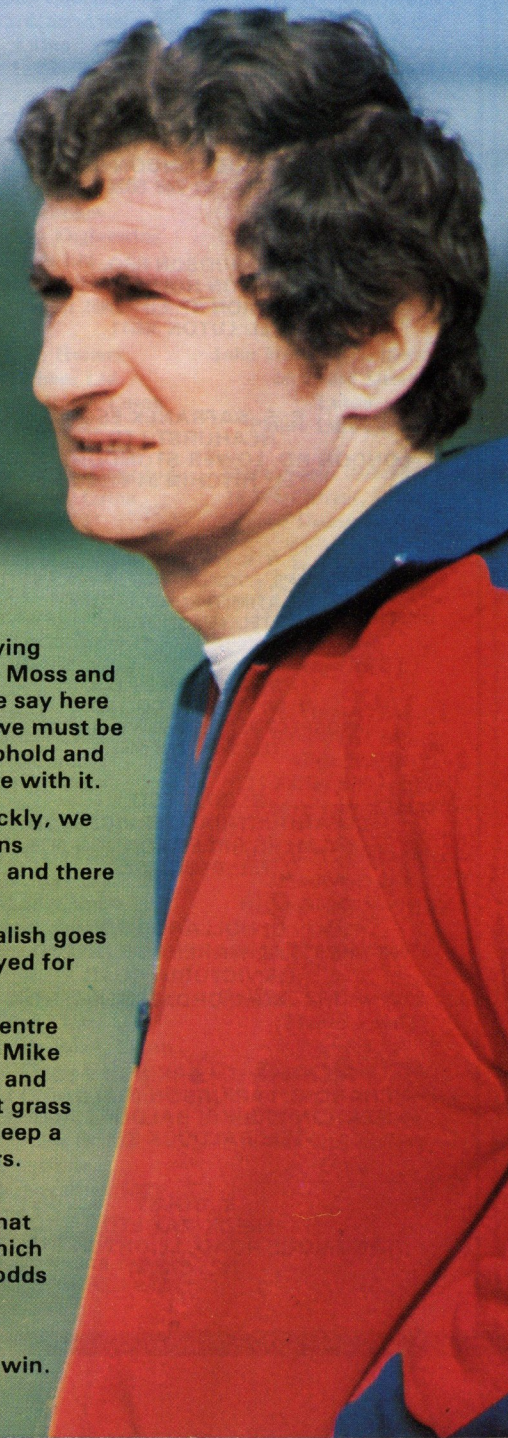
"My ideas may sound too radical. But the alternatives could, before very long, have drastic far-reaching consequences."

**ARE YOU ON THE
ITALIAN
SHORTLIST?
SEE PAGE 11**

Burnley will provide far more difficult opposition today than their position indicates. I saw them at Chelsea recently, and they deserved to take at least a point. Since Brian Miller took over, they have made a dramatic recovery on the field. At the same time, he has achieved forward planning by reducing his staff of three ageing players.

As you are aware, we did not get involved in a hectic beat the deadline transfer activity. Quite simply, there are very few players around who could better our prospects and those that have that quality cost money. We do not want to get into any situation which causes the club deep financial embarrassment. The players have done very well here in their first season together, and the quality of their football has won praise from many quarters. We shall continue to work hard and hope we can learn something from every game.

DAVID'S DIARY



The Cardiff game was, in many ways, a disaster. Atrocious playing conditions, opponents who tackled ruthlessly, injuries to David Moss and Kirk Stephens, and a crowd who reacted to the officials. Let me say here that we, supporters, management and players, felt down. But we must be very wary and remind ourselves that we have a reputation to uphold and in defeat (no matter what the circumstances) we must try to live with it.

We are still convinced that if we can get our game together quickly, we can still achieve our goal. Realistically, we must string three wins together before the Easter games, but football is a funny game, and there are eight clubs fighting for the prize of the First Division.

Our three Irish players have all gained honours again. Tony Grealish goes to Cyprus. Mal Donaghy to Israel and young Seamus Heath played for Ireland Youth at Newport on 11th March. Well done!

A week last Wednesday, the finals of the Hatters Community Centre 5-a-side took place. The idea of the competition was first class; Mike Iacano's organisation with Lil Fucillo's assistance was excellent and the standards were high. It is this involvement with the game at grass roots level that is necessary for football in general if we are to keep a steady flow of talent motivated enough to want to be footballers.

If we are to be a successful club our crowds must improve still, although I must give tremendous thanks to those who braved that wet, cold night against Cardiff. My last memory of a night in which there was a catalogue of incidents was your support when the odds were stacked against us. Everyone appreciated the waves of cheering as we pressed desperately to get an equaliser.

Hoping we see a good game this afternoon and a much needed win.

LUTON TOWN F.C.



72 Kenilworth Road
Luton
Tel: Luton 411622

President: T. Hodgson
Deputy President: J. A. C. Bain
Honorary Vice-Presidents: Lord Hill,
Sir Reginald Pearson OBE, J. B. Brent,
B. England, C. Holloway, L. Leppington,
Eric Morecambe OBE, E. Waller
Directors: Denis Mortimer (Chairman),
R. L. Banks, D. J. Evans,
E. S. Pearson, H. Richardson,
R. J. Smith, J. R. Yates

Chief Executive: J. Smith
Team Manager: D. Pleat
Assistant Team Manager: K. Gutteridge
Coaches: D. Coates, J. Moore
Club Secretary: J. Wilkinson
Assistant Secretary: W. Butler
Physiotherapist: J. Sheridan
Commercial Manager: M. Hardwicke
Project and Advertising Executive:
M. Beevor

Catering Manager: C. Hustwitt
Official Club Photographer: Gareth Owen
Solicitors: Lathom and Co.,
King Street, Luton
Auditors: Hillier, Hills, Frary and Co.
Medical Officer: W. A. C. Berry MBBS
Match-Day Magazine published by
Luton Town FC
Designed and printed by
Hemmings & Capey (Leicester) Ltd.

Vice Presidents of Luton Town FC

A. G. BERRY ESQ.
BRENGREEN HOLDINGS LTD.
61 CHEAPSIDE LONDON EC2V 6AX
TEL: 01-248 6026

C. J. HUDSON ESQ.
E. W. HUDSON HOLDINGS LTD.
6 UNION ST. LUTON
TEL: LUTON 30511

R. S. SAFRANEK ESQ.
NEAHURST LTD.
LONDON RD. LOWER STONDON, HITCHIN
TEL: HITCHIN 94-813545

N. S. FOOKES ESQ.
N. S. FOOKES ENGINEERING SERVICES LTD.
45 LATIMER ROAD, LUTON
TEL: LUTON 26139

R. W. UNWIN ESQ.
R. W. UNWIN & CO. LTD.
PROSPECT PLACE, WELWYN HERTS.
TEL: WELWYN 6441

B. COLE ESQ.
CLEANDUSTRIAL SERVICES LTD.
PALMERS GREEN LONDON N13
TEL: 01-882 4626

G. HOLLAND ESQ.
KESTRAL WAREHOUSING LTD.
116 VICTORIA ROAD
ROMFORD, ESSEX

RICHARD C. LARKINSON ESQ.
RICHARD C. LARKINSON (BALDOCK) LTD.
STATION WORKS, BALDOCK, HERTS.
TEL: BALDOCK 893158

S. GOLBY
FREDK RAY LTD.
STANBRIDGE ROAD, LEIGHTON BUZZARD
TEL: 372241

JOHN'S JOTTINGS



Our visitors today were formed in 1882 and turned professional in 1883. Among the honours they have earned are: Football League Division One Champions in 1920-21 and 1959-60; Division Two Champions in 1897-98 and 1972-73; FA Cup Winners 1913-14 and beaten finalists 1946-47 and 1961-62; Anglo-Scottish Cup Winners 1978-79. In recent times, their ability to discover young players has paid dividends with players such as Martin Dobson, Steve Kindon, Leighton James, Dave Thomas, and our own Alan West fetching big sums on the transfer market.

The club must also mean something to the players, because Dobson, Kindon and James have all found their way back after being transferred, although Kindon has now moved again.

For our visiting supporters today, a few names to stir the memories were, McDonald and Blacklaw in goal; fullbacks Angus, Elder, Winton and, in later years Newton; wing halves Adamson, Cummings, Shannon and present manager Miller; forwards Gray, McIlroy, Pointer, Pilkington, Cheeseborough, Connelly, just to name a few.

Games between our two clubs have rarely produced many goals, but one exception was on February 7 1959 when, in a Division One fixture, we won 6-2. The two teams were:

LUTON: Baynham, McNally, Hawkes, Groves, Owen, Pacey, Bingham, Brown, Morton, Cummins, Gregory.

BURNLEY: Blacklaw, Angus, Smith, Seith, Cummings, Miller, Connelly, McIlroy, Pointer, Cheeseborough, Pilkington.

The goalscorers were Brown (3), Morton (2) and Pacey for Luton, and Connelly and Miller for Burnley. Although their present League position is not too healthy, I am sure we will have to be at our best to get the points to keep us in the promotion race.

I had hoped the people who threw a beer can onto the pitch and the missile which broke the dressing room window at our last home match against Cardiff City would have taken note of the announcement in the recent programmes. I appreciate the frustration at certain decisions given by match officials, but your actions have possibly put the club in trouble with the Football Association. If we are reported, it could mean either a heavy fine or even the closing of the ground for a period. I am sure no-one wants that. Give voice to your opinions, that's what you pay your money for, but please forget the missiles — they only hurt the club.

Finally, don't forget your Watford tickets. There won't be any sold on the day of the match, so avoid being disappointed. The ticket office is open after today's match.

John Wilkinson

**ARE YOU ON THE
ITALIAN SHORTLIST?**

See page 11

COMMERCIAL CORNER

A SUPER MIAMI HOLIDAY — FREE

Our commercial manager Mike Hardwicke believes in helping Luton fans to help themselves — and this week we bring you exciting news of a holiday for two in Miami. It's part of the top prize in the weekly Aztec ticket when, instead of a £1,000 top house bingo prize, you can earn a fabulous trip to Miami. How's that for enterprise?

We plan to charter a plane, and the party travelling with our lucky winners could include directors, players, officials and possibly other celebrities too. We plan to travel in May next year and arrangements have already started. The venue is Miami Beach with accommodation at a first-class hotel. Interested? Read on.

All you have to do is buy an Aztec ticket on a regular basis, win the top house on bingo — and then sit back and wait in suspense. There could be places for agents on the trip too. In addition to helping the fans, we want to assist our hard working agents and those whom we consider to show a maximum increase in weekly sales over a given period will be given fair consideration.

Anyone who buys an Aztec ticket, or the agents who work hard for themselves, has the opportunity to join us on a holiday of a lifetime. Will it be you? It's all in your hands.

Why go to Rio for the carnivals when there are so many "Fiestas" in the streets surrounding Kenilworth Road?

Thanks to Tricentral's generosity, we now not only have the largest lottery operations in the Football League, but also the very best wheels to go with this massive operation of fund-raising. As we travel gathering money and thousands of winning tickets, we are very proud of our new combined image. From now on our "home fleet" will be in prominence and the links between ourselves and Tricentral will be further reinforced in our daily travels over an area of 35 miles radius of Luton. As commercial manager, heading a team which exists at Luton Town F.C., I cannot recall a more exciting era, on or off the park.

We have it right in all departments and it is down to us and the supporters to capitalise on all the advantages to be gained from our combined efforts. Each of us receive opportunities and these must be grasped and consolidated and capitalised on to a maximum. Luton Town and the generous support of Tricentral and many other sponsors' assistance will not be wasted.

Success brings further success and it's too exciting to even contemplate description of the final outcome. Simply, it's great to be around and we thank you all for your wholehearted support.

**ARE YOU ON
THE ITALIAN
SHORT LIST?**
(see page 11)

MEMBERS OF THE Vice Presidents Suite

Blue Arrow Staff Bureau
3 Holywell Hill, St. Albans
Herts.
Phone St. Albans 61373

Drapers Coaches
117B Gardenia Avenue
Luton
Phone Luton 597391

Filmergraphic Associates
Alton Road, Luton
Phone Luton 36407

N. S. Fookes
N. S. Fookes Engineering
Services Ltd.
45 Latimer Road, Luton
Phone Luton 26783

Mr. I. E. Holmes
Ivor Holmes Ltd.
82-88 Marsh Road, Luton
Phone 56622

E. W. Hudson Holdings Ltd
Union Street, Luton
Phone 30511

Richard C. Larkinson, Esq.
Richard C. Larkinson
(Baldock) Ltd.
Station Works, Baldock
Herts.

Dr. & Mrs. G. L. Plester
9 Briars Close
Nuneaton
Warwickshire

L. W. Wainwright
Fredk. Ray Ltd.
Stanbridge Road
Leighton Buzzard
Phone 372241

Robinson Metal (Luton) Ltd
Caleb Close
464 Dunstable Road, Luton
Phone Luton 53866

R & J Travis Ltd.
Northbridge Road,
Berkhamsted
Phone Berkhamsted 5303

Mr. R. FitzPatrick
Pre Hotel, Redbourn Road,
St. Albans, Herts AL3 6JZ

Chiltern Installations
28/32 George Street
Luton
Phone Luton 28308/9

Euro-Exhaust Centre
233 Dunstable Road
Luton
Phone Luton 38651

Fine Stamps Ltd.
Bilton Way, Luton
Phone 36761

Brian E. Handscombe
(Life and Pensions Broker)
22 Cardiff Road
Luton
Phone Luton 24404

John Hooper (Builders) Ltd.
66 Chase Street
Luton
Phone Luton 412525

Mark James (Salvage) Ltd
16 West Street, Dunstable
Phone Dunstable 605944

P. Laycock
Luton Sports Press
Hazelbury Crescent
Luton
Phone 28757

A. Hunter, Esq.
Ravenmere Ltd.
Allric House
21 Farley Hill, Luton
Phone Luton 32640

Richmond Electronics
(Markyate) Ltd.
Hicks Road, Markyate
Herts.
Phone Luton 840761

T. & H. Tyre Services Ltd.
Manor Road
Luton
Phone Luton 27665

Mr. E. Fountain
Vauxhall Motors
Luton

TOWN TOPICS

JUNIOR HATTERS CHATTER

We start this week with all the March birthdays. We usually try to include them all into the first programme of each month, but with so much happening, space has been very short. However, now is the time to catch up with this month's celebrations:

David Newman, Karen Harrington, Karen Corbell (1st); Mark Street (2nd); Stuart Howe, Richard Gray (3rd); Geoffrey New, Ian Currell, Ian Wilderspin (5th); Robert Quick, David Smith, Paul Smith (7th); Colin Hubbock, Keith Howard (8th); Michael Rehor (9th); Christopher Hackett, Graham Everitt (10th); Stephen Hanley (12th); Stephen Ireland (13th); Christopher Everest (14th); Richard Gates (16th); Paul Smith (17th); Alistair Hughes, Timothy Varney (18th); Joseph Kelly, Simon Wells, Graham Ashby (19th); Guy Green, Robert Turner, Steven Mitchell, Simon Culver, Alice Turner (20th); Paul Bonner, Andrew McPherson (21st); Paul Hart, Leslie Geaty, Paul Little (24th); Peter Woodruff, Julie Gerrard (25th); Richard Kirby, Lisa Palmer (26th); Danny Buba (27th); Paul Collins, Sean O'Farrell (28th); Steven Swain (30th) and Homer Evans (31st). Very many Happy Returns to you ALL. Have a good day and enjoy the match.

With such a long birthday list, we will have to hold the competition answers until the next magazine a week today.

Many of our Junior supporters were involved with the ugly crowd behaviour during the West Ham game and we realise many

parents are worried about the safety aspects of allowing their children to attend the games on their own. However, with our new Members Tickets, the rates are so attractive that not only does the pro rata amount to approximately 71p per game, but there is the added advantage of the safety of a reserved seat.

CALLING SEASON TICKET HOLDERS

On pages 9 and 10 you will find further details of the fantastic offers we are making supporters who take advantage of members tickets (season tickets) for next season. This additional information given here is directed to those fans who are already season ticket holders under the current system.

Our ticket office manager and assistant secretary Bill Butler will start dealing with enquiries from Monday. If you are already a season ticket holder, simply complete the application form which appears in today's magazine — or obtain a new one from the ticket office — and bring it, with your remittance, to the ticket office.

Alternatively, send it by post, accompanied by a SAE and the correct remittance. Your application will be entered in our records and we will issue your ticket immediately. If you require a standing members ticket, apply to the ticket office with your application form, but please remember to state which part of the ground you require.

If you require a members ticket for a seat and are NOT a current season ticket holder, a list of seats available will be on show in the

ticket office. You can select the seat of your choice and return to the ticket office to confirm it.

We must emphasise we cannot reserve seats without a firm booking, and payment — either in full or the appropriate deposit — is required. The ticket office is open from 9.30 a.m. until 4.30 p.m. on weekdays and from 9.30 a.m. until 11.30 p.m. on Saturday, although we would appreciate it if you could avoid first team match days for purchases.

FROM THE CENTURY CLUB

How nice it is to have our Saturday afternoon game again. After the last home game on a Friday evening, and our fortunes dissipated in defeat, Saturday seemed to be a surplus day! We recall our visit to Burnley last November was very wet and cold.

We hope at least to greet our visitors with springlike weather today, and favourable playing conditions in which to show off our team's considerable talents.

Century Club members will be pleased to notice the evidence that our long awaited extension is going ahead. We hope to be able to enjoy the benefits of additional space before the end of this season, even though the refinements will not be completed until the new term starts.

We are very fortunate that space has been found for our extension, and hope social events next season will be extended to make good use of it.

Our final social function this season will be our Chairman's end of season party, when we shall present our award to the young Player of the Year. Unfortunately, the names of our Player and Supporter of the Year will not be revealed until the next programme, but we await our members' choice with considerable interest.

FOLLOW OUR LEAD AND SAVE ON PRICES

Luton Town believes next season's price structure for members' tickets offers excellent value for money, and we want our supporters to feel we are looking after their interests.

The club's chief executive, John Smith, has made no secret of the fact that loyal Luton supporters will, in future, be given price reductions on a seasonal basis.

Our supporters will have no doubt read in previous match day programmes and in the local Press of our offer for next season which could provide you with a members' ticket for the following year FREE OF CHARGE in

addition to huge savings and discounts with local companies.

Voucher's contained in the members' ticket book will provide discounts when redeemed with local participating companies and will give you a profit on your season ticket.

The participating companies are: Tricentrol, who offer up to ten per cent discount on a new car; Bernard's World of Sport (sports equipment); Blue Chip Direct Marketing Ltd. (electrical, sports, household and photographic equipment) and Photravel who offer discounts on holidays.

On match days, a members' draw will be held on the new scoreboard which will shortly be erected at the Kenilworth Road end of the ground — and there are several prizes to be won.

How can you join? On the following page, you will find a coupon. Fill it in NOW or telephone the ticket office for further details. Remember, the club wants your support and, if you help us, we can help you.

To give you an idea of the savings you can make, the chart below shows comparable prices.

Description	What you pay	What you save on next season's match day prices	What it costs per match when you buy a season ticket
CENTRE STAND (Seats)	£40.00	£44.00	£1.90
WING STAND (Seats)	£35.00	£49.00	£1.66
BOBBERS STAND (Seats)	£35.00	£49.00	£1.66
SENIOR CITIZENS, STUDENTS AND JUVENILES (Seats)	£15.00	£6.00	71p
ENCLOSURE (Standing)	£25.00	£27.50	£1.19
OAK ROAD (Standing)	£25.00	£27.50	£1.19
KENILWORTH ROAD (Standing)	£25.00	£27.50	£1.19
SENIOR CITIZENS, STUDENTS AND JUVENILES (Standing)	£15.00	£6.00	71p

SPONSOR GOAL



Pictured above is our latest sponsor, Paul Shields who is sponsoring the club by donating £1 for a home goal, and £2 for each away goal. He wrote to the club, offering to help us and very generously agreed to our suggestion of "sponsor-a-goal".

If other supporters feel they might like to support the club in this way, why not contact our promotions executive, Mike Beevor.

WELCOME TODAY'S SPONSOR

Today's match is sponsored by Bedfordia Plant Limited the plant hire specialists. The company's head office is in Oakley, Bedford, with depots at: Buckingham, Northampton, Peterborough, Huntingdon, Cheshunt, Howstead (Kent) and in Scotland.

Bedfordia are one of the largest privately owned plant hire companies in the country, and run a full hire fleet of plant ranging from a 45-ton crane down to a 2 inch

pump. They also specialise in self-drive hire, consisting of wheeled excavators, tracked excavators plus tracked loading shovels, and enjoy having the reputation of being the leaders in this field, with the largest fleet in England for this type of hire.

Bedfordia have previously sponsored Luton and their general manager Mike Robinson, and their sales manager, Brian Tunnard enjoy being members of the Century Club.

TODAY'S PRE-MATCH MUSIC

Today's pre-match music is provided by Sandy Scout and Guide Band. Since their last visit to Kenilworth Road almost two years ago, many changes have taken place in their ranks.

The band have increased in number and have bought a complete new set of trumpets including four bass trumpets and one horn together with a new set of tuned bass drums and two sets of drum clusters

all at a total cost of approximately £2,000.

At the Billericay Band Contest last September, the band won the Best Band of the Day award and others.

The band have a full programme this year with many requests to attend Carnivals etc. and will enter five band contests. Last Saturday the Band played in the Youth Band Contest at the Royal Albert Hall, London.

ARE YOU ON THE ITALIAN SHORTLIST?
(see page 11)

EXPERIENCED MOTOR MECHANICS REQUIRED

Pay in excess of 220p per hour for 40 hours plus incentives over and above.

Every Mechanic has his own hoist

After a qualifying period all employees are entitled to the following benefits:

- ★ Four weeks holiday
- ★ Non-contributory pension scheme
- ★ Free private medical scheme
- ★ Share participation scheme
- ★ Car purchase scheme

For further information contact:

Ray Smith
Customer Service Manager
Chaul End Lane Trading Estate
Ring Luton 31133

Tricentrol
CARS (LUTON) LIMITED

LUTON TOWN FOOTBALL & ATHLETIC CLUB LTD

MEMBERS' TICKETS 1980-81

APPLICATION FORM

NAME

ADDRESS

TEL. No.

I have supported Luton Town since

At present I hold Season Tickets for:

BLOCK..... ROW..... SEATS.....

I wish to apply for the following Members' Tickets for the season 1980-81 and I agree to abide by any rules and regulations which are in force from time to time and I will do my best to promote the interests of Luton Town Football Club.

Signature

AREA	QUANTITY		SENIOR CITIZENS
	£ . ADULTS	£ . STUD/JUV.	£ .
CENTRE STAND			
WING STAND			
BOBBERS STAND			
MAIN STAND ENC.			
OAK ROAD			
KENILWORTH ROAD			

- a: I require a total ofTickets and I enclose my full remittance of £..... in settlement.
- b: I require a total ofTickets and I enclose a remittance representing 10% of the total purchase price of £.....
- c: Financing can be arranged on the full purchase price. For further details, contact the Ticket Office. Telephone 411622.
- d: Students: Must be attending College full time. Documentary evidence required.
- e: Juveniles: Age qualification is 15 and under.
- f: Senior Citizens: Pension book to be produced.

NUMBER 16
Programme Plus

DESIGNED & PRODUCED BY
SPORTOPIA PROMOTIONS LTD.
172-176 THE HIGHWAY LONDON E1 9DD
TELEPHONE 01 481 8161



A BETTER UNDERSTANDING

By COLIN BENSON

The hardest job on the field of play today will probably be that of the referee, the part time official whose decisions can sometimes win or lose a game.

His is a thankless task, for his actions have to be sharp and precise, he has to act as judge and jury on countless incidents throughout a game and be seen to be fair.

Put in this position it is not surprising that they become the targets for criticism, the scapegoat for many a failing manager who will credit bad refereeing as the reason for his teams demise and his eventual sacking.

Gamesmanship

Of course, referees do not take sides. They are honest men conscientious football fans who have worked their way up from local football games to the top. And certainly money is not the thing that motivates them, for in comparison to the players, they are paid peanuts.

But since the game began there has obviously been some form of gamesmanship practiced by some players, otherwise there would never have been the need to appoint a neutral official to oversee the proceedings.

Most of the controversy over the men in black centres around the highly competitive and commercial world of League football where the stakes are so high and the pitfalls so deep. It is a world of tension, strain and pressure, with every little problem magnified a thousand fold by the media, there is no room for failure.

Live With It

Of course, referees do make mistakes, sometimes important ones that can change the whole course of a game. But they are human and they have to live with it as do the players, management and fans.

One has to be realistic, play has got much faster over the years and it is easy for a referee to be deceived by quick movement. But this raises the question that if referees are missing a lot of fouls, are the players perpetrating them deliberately?

In recent months one national daily paper has run a series of articles on the players they labelled as "cheats" those footballers whose dramatics are more apparent than their skills. It would be naive to suggest that there are not such players in the game, but they are but a minute proportion of the 1,104 players that are on duty in the Football League every weekend.

So if we accept that officials will make mistakes and that there is some cheating on the field by players, where do we go from there? I think there must be close liaison between referees and players, maybe even the appointment of a squad of full time professional referees who could join in team training sessions and discuss with the players their mutual anxieties.

problems in the player - referee relationship is the lack of respect for the official. Closer contact in working conditions could help in this

respect.

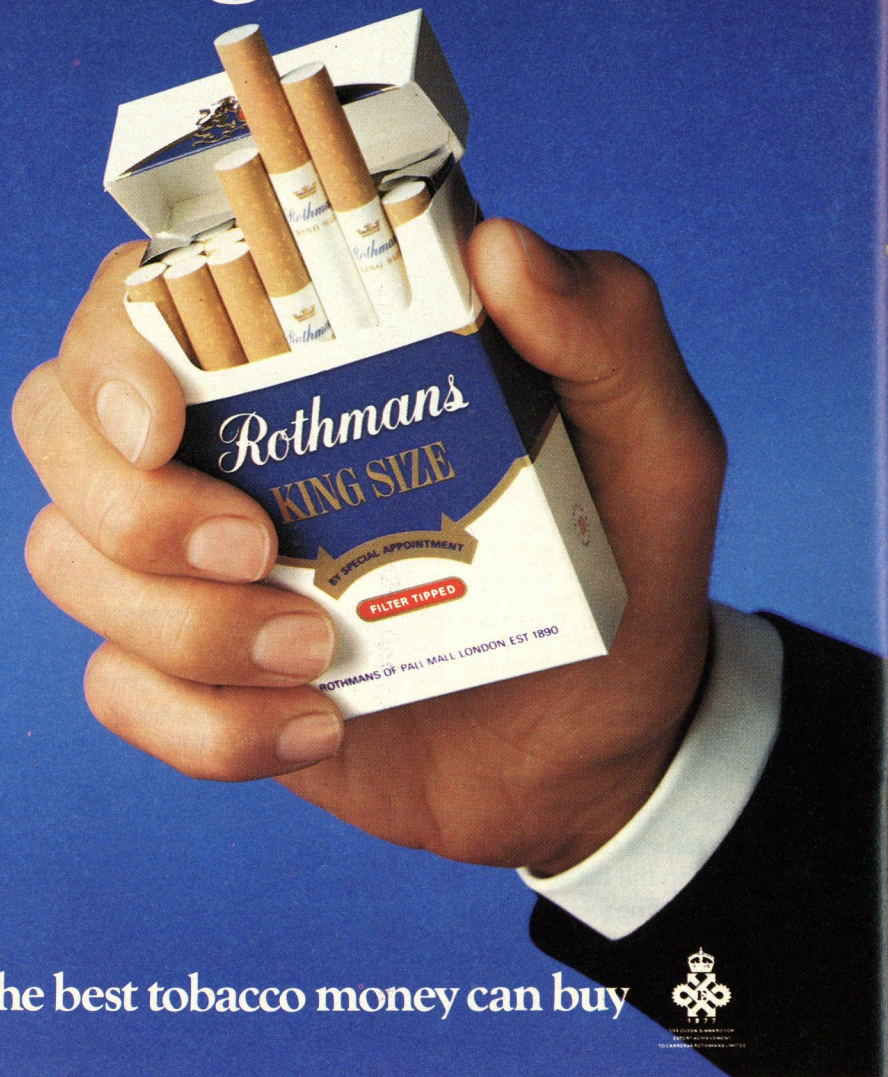
Finally, the officials themselves must strive for greater consistency and honesty. It is only natural for a referee to be more reluctant to give a decision against a defender in the penalty area, because of the consequences - a penalty. But is it being honest and playing the game by the rules?

There obviously is a very fine line to be drawn, but a player will only be penalised if he has been judged to intentionally commit the offence.

WORLD LEADER



Rothmans The greatest name in King Size



the best tobacco money can buy



MIDDLE TAR As defined in H.M. Government Tables.
H.M. Government Health Departments' WARNING:
CIGARETTES CAN SERIOUSLY DAMAGE YOUR HEALTH

ARE YOU COMING TO ROME?

Are you on our Italian shortlist? You could be, and the rewards for one lucky fan is tremendous.

How do you fancy watching England play in the European Championships in Italy this summer — ABSOLUTELY FREE? It's the prize of a lifetime, and it can be yours just for sitting down for ten minutes and writing a match report of this afternoon's game.

In conjunction with Photravel and Fine Stamps, we are offering a Luton fan the chance to climb aboard that Italian-bound jet and sit back to watch England play in Ron Greenwood's vital preparation for the

next World Cup series. But what do you have to do to win that fabulous prize?

It couldn't be easier. Simply write a 400-word report — preferably typed but not essential — on this afternoon's game. The programme editor will select one, or more if the quality warrants it, as today's heat winner.

He will go through with previous heat winners when his entry will be judged by a special panel at the end of the season. And the prize for the overall winner? — it's that fabulous trip to Italy.

But don't worry if your entry fails to win a heat. You can enter as many times as

you like until the end of the season. Including today's match, there are four home games left until the end of the season. It's time to get your pen out.

Send your entry to: The Programme Editor, Luton Town FC, Kenilworth Road, Luton, to arrive not later than first post on Wednesday. Entries should be marked "Rome Competition" and this afternoon's heat winner will be announced in the Watford magazine a week today.

This week's winner is D. J. Browne, of 10 Swallow Street, Ivor Heath, Bucks, who wrote the following report.

LUTON'S NIGHT OF DISASTER

This was a night of disaster for Luton. A waterlogged pitch, some dreadful refereeing, vital injuries and crowd misbehaviour all added up to the most unfortunate result of the season and one which may be decisive in their promotion battle. From now on, only victories will do, home or away, regardless of the calibre of the opposition — and, for the first time this season, vital players may be missing.

Referee Bidmead will long remember his visit to Luton. Rarely can a referee have been seen edging towards the tunnel before blowing the final whistle and racing off to safety a good ten lengths ahead of any player. He made many mistakes, not the least of which was his first decision — to allow the match to be played at all. The pitch glistened with water on mud and football was quite impossible. Only two worthwhile moves were put together in 90 minutes and the conditions played a part in all the goals.

Having decided to play, the referee compounded his error by failing to

make any allowances for the impossible conditions. He blew his whistle continually for the slightest physical contact as players slithered into each other. More than once the Cardiff players nagged him to abandon the game (before they took the lead, of course).

The only piece of football in the first half came when a Cardiff clearance stuck in the mud and Moss grabbed the ball to weave past three defenders and score. Even this was a mixed blessing, as Moss was injured in the act of scoring and went off on a stretcher. With the substitute on, Luton then also lost Stephens, after a Cardiff man trod on his hand. While Stephens was off, Cardiff scored twice, either side of half time.

First, Saxby was penalised for a 'foul that never was' (and was booked, bringing him over 20 points) and Buchanan hit the free kick low through the wall into the corner. Then Buchanan swept over a fine cross and Stevens took advantage of Stephen's absence to score, unmarked, at close range — the game's

second and final piece of genuine football skill.

Cardiff then pulled ten men back and Luton threw everything at them, but all in vain. The cloying mud stopped any attempt at passing or carrying the ball; the massed ranks dealt with crosses and long balls. West once got deep into the penalty area before the mud beat him and there were numerous scrambles, but a goal rarely looked likely in the dreadful conditions.

The constant bombardment of Healey in the Cardiff goal by the crowd and the throwing of a beer can did nothing to help the team or the club. It was noticeable that the whistle solo of Mr. Bidmead ended, however, and as the game became ever more frantic he became ever more silent.

So — two points gone, Moss badly injured, Saxby to be suspended, the pitch ruined, the club inevitably fined and possibly even the ground closed because of crowd behaviour — a very sad night for Luton Town.

KEEP IT IN THE FAMILY

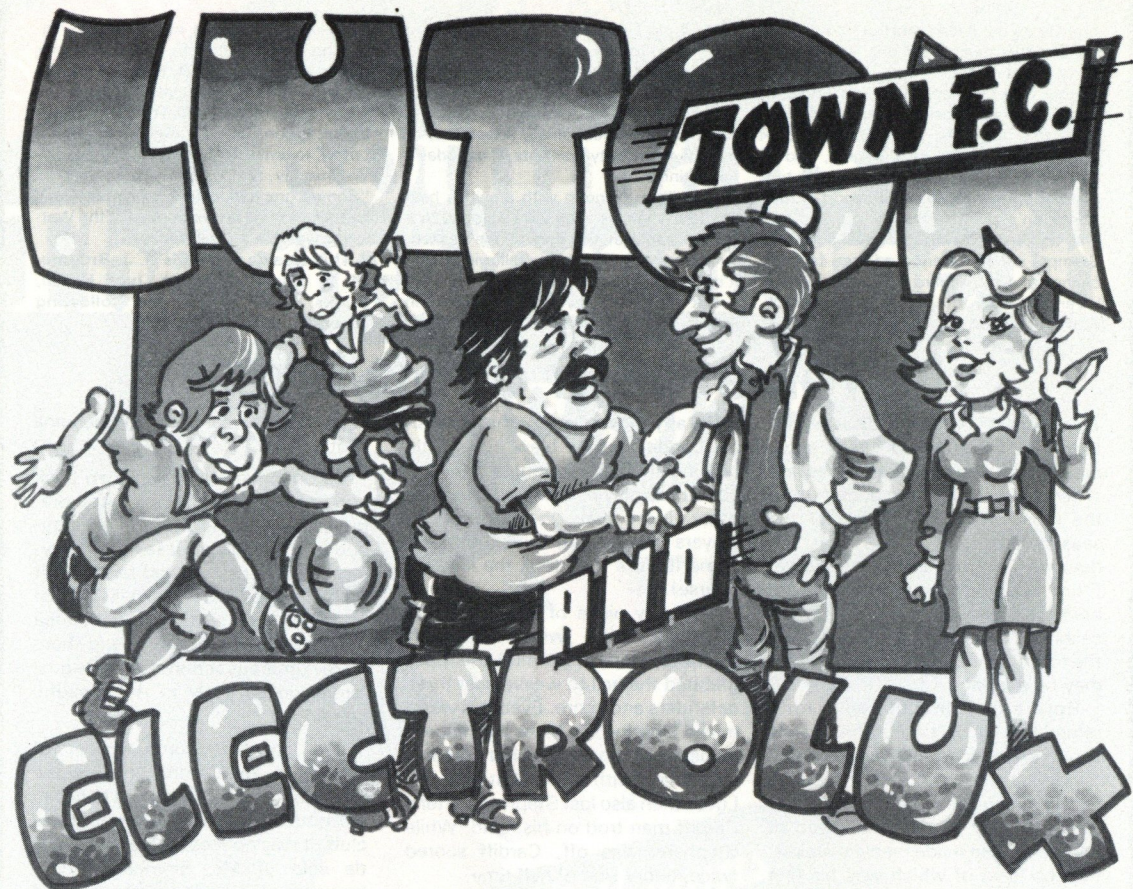


Three of our matchday stewards in the Kenilworth Suite believe they have created a unique record. Not quite the true three generations, but George Anderson (Father-in-law), Mike and Tony Williams (Father and Son) centre and right, make up this unusual team.

George began his term with the club in 1946 when, with his father, he was responsible for the old directors' car-park in Maple Road.

Mike joined the team in 1964 when the car-park opened a new entrance in Hazelbury Crescent. In 1965 they both moved to the new directors entrance at the rear door of Maple Road.

Finally, Tony became a steward in 1977 after being a regular Town supporter for a number of years.



**BOTH
LEADERS
IN THEIR
FIELD**

ELECTRICIANS AND MILLWRIGHTS

Due to our expansion plans here at Oakley Road we are looking for the above experienced Plant personnel.

**GOOD MONEY, GOOD
CONDITIONS — THAT'S
ELECTROLUX!**

Put your earnings in the top league,
for example:

DAY SHIFT (40 hours) £106.80
NIGHT SHIFT (40 hours) £137.13

Why not phone Bronwen Philpott on
Luton 53255 and discuss joining Luton's
other TOP TEAM.



Electrolux

RESERVE REPORT

By
GEORGE ROGERS

Bristol Rovers 2 Luton Town 0

This Combination game saw the Town reserves facing a very experienced Rovers side who, at the end, were well worth their win over a very young Luton side. Apart from Ian Turner in the Luton goal, who gave a fine display in his debut, the oldest player in the Luton side was only 19. Some of the Town players showed clear signs of having played too many games over a short period. Denmey put Rovers ahead after 10 minutes, and Clarke added the second just before half time. Luton fought hard after the interval to deny Bristol Rovers from adding to their score.

Team: Turner (I), Woodward, Ollis, Turner (W), Goodyear, Harriott, Madden, Johnson, Smith, Pearson, Heath, Small.

Leicester City 2 Luton Town 2

Leicester City reserves went straight into the attack in this Combination fixture and it was no surprise when Smith put them one up, Buchanan adding another one before half time. In the second half it was the Town who was calling the tune and Herbie Smith got one back and, with seven minutes to go, Percy Pearson scored to give Town a welcome point.

Team: Turner (I), Woodward, Ollis, Turner (W), Goodyear, Harriott, Johnson, Smith, Pearson, Ingram, Bunn, Madden.

Norwich City 0 Luton Town 0

A midweek Combination fixture saw the Town visiting high riding Norwich City reserves. A win against the Town would have put them top of the table. Norwich pressed hard from the start but, with Clive Goodyear and Les Harriott well in command, the Norwich forwards saw very few chances. In the second half, Luton started to come more into the game and created several chances but both defences held out to give the reserves a deserved draw, also denying Norwich City the pleasure of going top.

Team: Turner (I), Murphy, Aizlewood, Johnson, Goodyear, Harriott, Turner (W), Smith, Madden, Pearson, Heath, Bunn.

Luton Town 3 Coventry City 2

A Midland Under-19 fixture played on the excellent surface of Vauxhall Motors sports ground, allowed both teams to provide an excellent game. With the Town lads working hard, it was no surprise when Michael Small put the Town one up and, 15 minutes later, Alan Cosby made it two. Just before the interval Coventry got one back. In the second half the Town continued to play well and a long ball from Alan Cosby on the left found John Cole on the right unmarked and he ran on to beat the advancing keeper. Just before the end Coventry were awarded a penalty for their second but the score remained at 3-2 to the Town to give them a good victory over a talented Coventry City side.

Team: Burke, Woodward, Turner, Ollis, Foote, Piotrowski, Cole, Bunn, Small, Cosby, Brammer, Coutie.

Luton Town 4 Bedford Town 1

Making a rare appearance at Kenilworth Road, the Town youth entertained Bedford Town in a Eastern Junior Cup fixture. Luton went one up through Michael Small before the interval. In the second half Les Ryan put the Town two up but Bedford immediately came back and scored. With 15 minutes to go, John Moore brought on Frankie Bunn and John Cole, Frankie Bunn scoring two goals to put Luton into the semi-finals against Norwich City.

Team: Walker, Murphy, Currant, Contie, Foote, Piotrowski, Brammer, Evershed, Ryan, Small, Cosby, Bunn, Cole.

Luton Town 3 Potton 2

Playing in poor conditions, the Town progressed into the semi-finals of the Wallsan Combination Cup with goals by John Cole, Stuart Harding and Ray Brammer.

Team: Marshall, Greene, Murphy, Barker, Foote, Piotrowski, Cole, Harding, Baker, Brammer, Reynolds, Cosby, Evershed.

HAVE YOU EVER TASTED TIGER?

Tiger Bitter is now at Luton Town Football Club.

Tiger from Everards. A cool and satisfying way to quench a thirst.

Next time you go to the bar, ask for a Tiger.

You won't know what you've been missing until you try it.

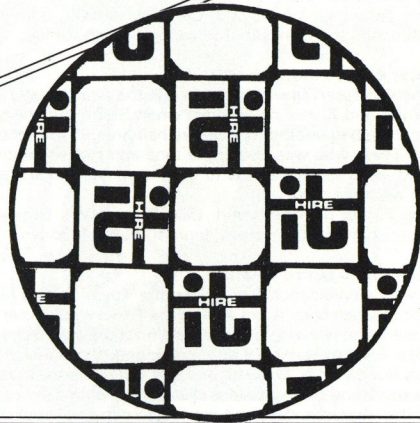


EVERARDS FINE BEERS.
Top of the thirst division.

TODAY'S MATCH IS SPONSORED BY

BEDFORDIA PLANT

**BEDFORDIA PLANT LIMITED
TOP OF THE PLANT
HIRE LEAGUE
WHEN IT
COMES
TO
SERVICE**



OPERATED PLANT

DROTTS DOZERS TRACKED EXCAVATORS
WHEELED EXCAVATORS TRACKED CRANES WHEELED CRANES

NON OPERATED PLANT

FORK TRUCKS ROLLERS COMPRESSORS GENERATORS
MIXERS WELDERS TAR SPRAYERS VIBRATING PLATES
POKERS BOWSERS DUMPERS PUMPS

SELF DRIVE PLANT

DROTTS DOZERS WHEELED AND TRACKED EXCAVATORS
TRACKED CRANES

The above items are available for hire on a self drive basis and come under the same conditions of hire as non operated plant.

LONG TERM OR CONTRACT HIRE ARRANGED ON ANY ITEM OF PLANT

TELEPHONE

Oakley (02302) 3511	Northampton (0604) 42211	Halstead (07874) 3261
Ellington (0480) 890205	Peterborough (0733) 51575	Medway (0634) 250670
Bucks (02802) 3771	Cheshunt (0992) 35511	Peterhead (0779) 71443

HERE TODAY BURNLEY



One of soccer's most successful stories some years ago was Burnley's outstanding ability to produce their own players through a vigorous youth policy. The club was, for many years, the envy of managers throughout the Football League. Burnley's fairy tale probably started with Tommy Lawton, a Bolton youngster who arrived at Turf Moor as an office boy and played in their first team as a 16 year old lad.

Lawton, of course, went on to become one of the best centre forwards to wear an England shirt — and one can't help thinking that current manager Brian Miller would give his right arm for a player capable of banging the ball into the net consistently as Burnley continue their struggle for Second Division survival. At one stage of this season, Burnley looked automatic candidates for relegation to the Third Division. But some good results have given them renewed hope of beating the dreaded drop, helped by the introduction of a couple of new faces to shade the transfers of Paul Fletcher and Peter Noble to Blackpool recently.

Miller, formerly a coach at Turf Moor, took over as manager when Burnley parted company with Harry Potts, and he couldn't have wished for a worse start when his newly inherited team lost their 25th successive game with a 3-2 defeat at Preston. Even worse was to follow when poor Burnley were thrashed 7-0 at QPR in their next game — and

the television cameras were there to record the embarrassment.

But Miller, even after Luton had drawn 0-0 at Turf Moor on a windy and wet November afternoon, saw hope for the rest of the season and gradually Burnley have risen from what was a hopeless position to give him some hope of survival.

Goalkeeper Alan Stevenson was a product of the school which supplied other famous keepers at Chesterfield. A fat cheque secured his transfer in January 1972 and he has an England Under-23 cap to his credit — testimony to his ability as a top-class keeper. An ever present in the League side last season.

Welsh international winger Leighton James cost Derby County a £300,000 fee when they took him to the Baseball Ground in 1975. But after a spell with QPR, a fee half that size installed him at Burnley again. Martin Dobson was another Burnley player who found his way back to Turf Moor. He started his career at Bolton but, after being given a free transfer, was snapped up by Burnley. He skippered Burnley to the Second Division Championship in 1972-73 and was capped by England before Everton paid £300,000 for his transfer in August 1974. He returned to Burnley five years later. When Luton played at Turf Moor in November, Miller blooded two young brothers, Richard and Vince Overson. Richard made 25 appearances for the reserves last season, but made his senior debut against Leicester City

shortly before the Luton game. Vince signed as a full professional only in November and made his debut against Orient.

Right back Derek Scott, a former England schools international, arrived at Burnley in 1975 when the club were still in the First Division and made his debut against Manchester City. He has been partnered by Ian Brennan, a recruit from Derbyshire junior football. Brennan fancied his chances as a striker but switched to left back in Burnley's reserve side and has gradually worked his way in to the senior side.

Central defender Jim Thomson was a Chelsea player under Tommy Docherty for two seasons after being spotted in Scottish junior circles. A total of 40 appearances in Chelsea's side prompted Burnley to sign him for a large fee. Billy Rodaway was outstanding in the heart of the defence last season, but can also play in midfield. His consistency last season contributed to his 39 League appearances.

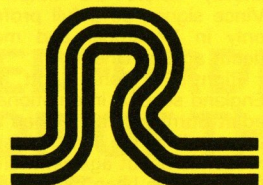
Midfield player Kevin Young was spotted playing for Sunderland schoolboys and signed as an apprentice professional for Burnley in June 1977. He stepped up to full time last May and made his debut at Wrexham. He is basically a left sided midfield player, but can operate at left back.

Defender Tony Arins joined Burnley from Mansfield junior football. A tall, stylish defender, a feature of Arin's game is his strong shooting from long range.



SPONSOR KIT

TODAY'S MATCH KIT IS SPONSORED
BY



**REDBOURN ELECTRICAL
SERVICES LTD**

Electrical Services to the Trade
throughout the UK and

Agent for **FACE** Fire Alarm Systems

Electrical Engineers
Unit 10 Dockley Road
London SE16 3SF
Tel: 01-237 5534



LUTON 56622
BEDFORDSHIRE

*Achieve your goal
with*

BMW

MAIN DEALERS
IN
BEDFORDSHIRE

HOLMES

AWAY TRAVEL

Four away games left . . . and you can watch them all if you're a member of the Bobbers Travel Club who accept bookings in the Bobbers Club every Wednesday evening.

But you'll have to be an early bird for the last away trip of the season to Newcastle on May 3. Coaches leave at 7.30 p.m. picking up at Luton. Departure times from Cranfield, Marston and Bedford are 60, 50 and 40 minutes earlier respectively. Remaining trips are:

		Adults	Children	Depart
4 April	Charlton	£1.50	£1	12 p.m.
7 April	Chelsea	£1.50	£1	12 p.m.
19 April	Birmingham	£2.50	£2	11.30 a.m.
3 May	Newcastle	£5.00	£4	8 a.m.

FACE IN THE CROWD



Who wants a free stand ticket for our home game against Shrewsbury two weeks today? We can give only one away, and it will go to the person ringed in this picture if he presents himself to assistant secretary Bill Butler in the ticket office after today's game. Happy hunting.

A TIMELY REMINDER

A timely reminder to those fans who want to watch the attractive derby game clash against Watford at Kenilworth Road a week today. If you haven't purchased a ticket, you won't be admitted to the stadium — and they are NOT ON SALE on the day of the match. The ticket office is closed on Good Friday and the deadline for buying tickets is 4.30 p.m. next Thursday. Don't say we didn't warn you.

**ARE YOU ON THE
ITALIAN SHORTLIST?**

See page 11

DOWN MEMORY LANE

GORDON TURNER

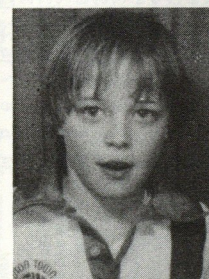
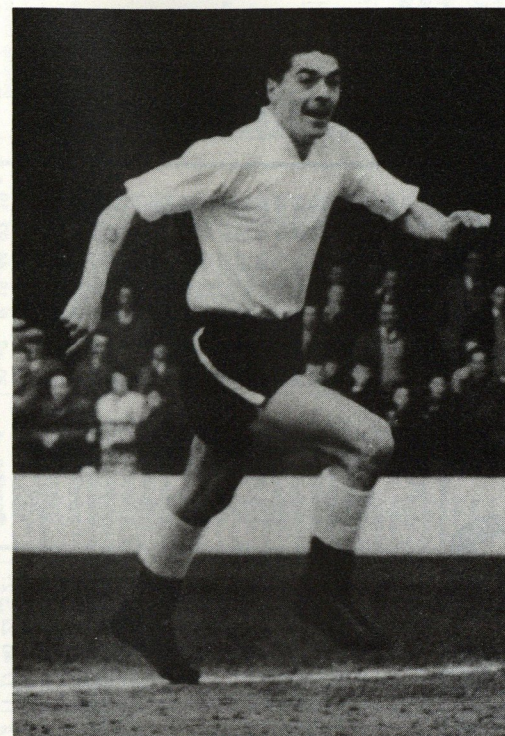
Since the signing of Steve Turner from Barnet last week, we thought it was a good time to feature his father, the late Gordon Turner.

Gordon joined us direct from the Royal Navy as a wing half, but knowing his liking to join the forwards he was converted to an inside forward, and from then on he never looked back.

His goals in total aggregate of 243 scored from 1949-64 is still a club record. His honours include representing the FA the Football League and for the England 'B' team.

The sports shop he started with another former player, Wally Shanks, in the town is still thriving and run now by his family.

Picture: Luton News.



TODAY'S MASCOT

This afternoon's mascot is Nicholas Abbott, of Windmill Avenue, Marshalwick, St. Albans. Nicholas attends the Herts Skywood School and plays soccer, cricket and also swims for his school team. A Luton fan for five years, Nicholas tells us his favourite player is David Moss — and his biggest ambition is to watch the Town play in the First Division.

We hope it won't be too long, Nicholas. Enjoy your afternoon.

WHITBREAD



TROPHY BITTER

TAXI

both home and away
with

ARRAN CARS

Modern Fleet of
saloons and minibuses

ARRAN CARS
8 Oxford Road, Luton

Telephone:
Luton 33625/412040

SPONSOR KIDS

200 children have been able to watch today's game free of charge thanks to the support and generosity of the

Bedroom Furniture Specialists

WALLSPAN BEDROOMS

UNIT 174
ARMDALE CENTRE
BUTE STREET
LUTON
Telephone: 23015

TOWN CLASSIFIEDS

TAXI TO TAKE YOU TO AND FROM THE MATCH
Contact 'A' Cars situated next door to the ground in
Kenilworth Road. TEL: 'A' CARS ON LUTON 410000.

AWAY TRAVEL

Why not join the Bobbers' Travel Club?
For more information Telephone Jenny Russell on Luton
423916, or come and see us in the Bobbers' Club on
Wednesday nights between 7.30 - 9.30 p.m.

ALUMINIUM WINDOWS

We make and install our own finest quality aluminium
replacement windows, doors and patio doors. Competitive
prices. Personal attention from your local firm:
W. H. ALLSOP & SONS, 153 NEWTOWN STREET, LUTON.
Tel: Luton 20011 or evenings 424650/23472.

WANTED. Football Programmes wanted, any clubs, older the
better. Cash paid. P. R. Stocken, Luton 598108.

RUBBER HAND STAMPS

and marking equipment, also general printers. For a prompt
personal service contact: **Mount Tape Limited, Heathfield
Works, Leyton Road, Harpenden, Herts.**
Tel: 64431/2/3 (24 hour service on 64431).

ANDREW BALL: Congratulations on your 12th birthday.
Mum and Dad.

CONGRATULATIONS for completing the 92 Tom and thanks
to you and Paul for organising the trips. Steve, Dave, Frank.

HAPPY BIRTHDAY PAUL and thanks for your support.
Greene King Brewers!

You can get your message in Town Classifieds for only 10p per
word, £1 minimum payment. Send details with payment to
Mike Beevor, Luton Town FC, Kenilworth Road, Luton.

FACTS AND FIGURES



DIVISION 2 HOT SHOTS (including League/FA Cups)
25 GODDARD, Q.P.R.
22 MOSS, Luton Town
18 SHOULDER, Wrexham
17 CROSS, West Ham
17 DUNN, Wrexham
17 DAVIES, Fulham
17 MCNEIL, Wrexham
17 ROBSON, Sunderland

DIVISION TWO
AVERAGE ATTENDANCES
Newcastle 38,322
Sunderland 29,567
West Ham 31,627
Chelsea 22,281
Birmingham 27,297
Leicester City 24,594
Watford 24,716
Swansea 22,000
Q.P.R. 20,040
Luton Town 15,641
Wrexham 12,707
Preston 22,348
Notts County 14,859
Cardiff 16,328
Bury 11,486
Oldham 16,433
Orient 23,885
Bristol Rovers 14,176
Charlton 19,021
Cambridge 8,792
Up to and including 22nd Mar.

2ND TEAM APPS. &
GOALSCORERS 1979-80
Aizlewood 18
Birchenall 4
Bunn 6
Cox 6
Cosby 2
Goodyear 2
Hartnett 2
Heath 2
Ingram 2
Jones 2
Madden 2
Murphy 2
Ollis 2
Pearson 2
Phipps 2
Small 2
Smith 2
Stephens 2
Turner W. 2
Walker 2
Woodward 2

DIV. 2 APPEARANCES &
GOALSCORERS 1979-80
Aizlewood 18
Birchenall 4
Bunn 6
Cox 6
Cosby 2
Goodyear 2
Hartnett 2
Heath 2
Ingram 2
Jones 2
Madden 2
Murphy 2
Ollis 2
Pearson 2
Phipps 2
Small 2
Smith 2
Stephens 2
Turner W. 2
Walker 2
Woodward 2

FOOTBALL COMBINATION

P W D L F A Pts
Chelsea 35 21 7 7 59 36 49
Tottenham 33 20 6 7 51 41 48
Arsenal 32 20 6 7 51 41 48
Norwich City 32 19 6 7 51 41 48
Fulham 32 19 6 7 51 41 48
Ipswich Town 35 14 12 9 57 42 40
Southampton 36 13 12 11 55 45 38
Q.P.R. 33 15 7 11 59 60 37
West Ham 34 13 9 12 59 53 35
Birmingham 34 13 9 12 59 53 35
Bristol City 34 12 6 10 65 44 34
Bristol Rovers 36 14 5 17 58 59 33
Leicester City 35 10 8 17 45 55 27
Crystal Palace 34 10 11 14 55 31 31
Luton Town 35 8 15 11 35 46 31
Swindon Town 35 10 8 17 45 55 27
Cardiff City 35 10 8 17 45 55 27
Oxford United 35 8 10 17 44 58 26
Plymouth 35 8 7 20 46 85 23
Orient 34 6 7 21 22 49 19
Reading 30 7 5 18 44 93 19
Hereford 32 5 8 19 41 71 18

LEAGUE DIVISION TWO TABLE 1979-80

Home Away
P W D L F A W D L F A Pts
Chelsea 34 12 5 3 29 13 8 7 28 32 44 +12
Leicester City 34 9 2 3 29 13 8 7 28 32 44 +12
Birmingham 33 11 3 2 29 13 8 7 28 32 44 +12
Q.P.R. 33 11 3 2 29 13 8 7 28 32 44 +12
Luton Town 34 7 8 2 38 12 6 5 23 25 39 +16
Sunderland 33 13 4 0 38 12 6 5 23 25 39 +16
Newcastle Utd. 34 12 3 1 26 10 2 8 8 17 26 39 +7
West Ham Utd. 31 11 2 4 29 16 2 6 8 17 26 39 +7
Oldham Athletic 33 11 3 2 37 16 2 6 8 17 26 39 +7
Orient 34 7 5 4 25 26 2 8 7 17 19 35 +4
Cardiff City 34 10 3 3 31 15 5 0 13 16 29 33 +6
Shrewsbury 34 10 3 3 31 15 5 0 13 16 29 33 +6
Preston 34 7 8 3 37 22 2 7 17 22 33 -4
Wrexham 34 11 2 3 23 10 3 12 14 31 33 -4
Notts County 34 4 9 4 25 18 2 8 12 30 31 -11
Swansea City 34 10 0 7 25 18 2 8 12 30 31 -11
Bristol Rovers 34 6 5 6 18 18 2 7 8 10 19 28 -9
Watford 34 5 6 7 18 22 1 4 11 17 40 22 -27
Bury 34 5 6 7 18 22 1 4 11 17 40 22 -27
Fulham 33 3 4 9 12 24 0 3 14 12 40 20
Charlton 33 6 5 5 20 20 0 3 14 12 40 20

LEAGUE DIVISION TWO FIXTURES 1979-80

Aug. 11 Gillingham (L.C. 1, 1L)
14 Gillingham (L.C. 1, 2L)
18 Cambridge United
25 Bristol Rovers
Sept. 8 Swansea City
15 Notts County
22 Oldham Athletic
29 Fulham
Oct. 9 Bristol Rovers
13 Sunderland
20 West Ham United
27 Preston North End
Nov. 3 Cambridge United
10 Queens Park Rangers
17 Bury
24 Shrewsbury City
Dec. 1 Shrewsbury Town
8 Newcastle United
15 Wrexham
21 Charlton Athletic
28 Watford
Jan. 5 Swindon Town (FAC 3)
12 Leicester City
19 Notts County
26 Oldham Athletic
Feb. 2 Fulham
9 Sunderland
16 Swansea City
23 West Ham United
Mar. 1 Swanssea City
8 Preston North End
14 Cardiff City
21 Queens Park Rangers
28 Bury
Apr. 4 Charlton Athletic
11 Watford
18 Shrewsbury Town
25 Wrexham
May 3 Newcastle United
10 F.A. Cup Final

Aug. 11 Gillingham (L.C. 1, 1L)
14 Gillingham (L.C. 1, 2L)
18 Cambridge United
25 Bristol Rovers
Sept. 8 Swansea City
15 Notts County
22 Oldham Athletic
29 Fulham
Oct. 9 Bristol Rovers
13 Sunderland
20 West Ham United
27 Preston North End
Nov. 3 Cambridge United
10 Queens Park Rangers
17 Bury
24 Shrewsbury City
Dec. 1 Shrewsbury Town
8 Newcastle United
15 Wrexham
21 Charlton Athletic
28 Watford
Jan. 5 Swindon Town (FAC 3)
12 Leicester City
19 Notts County
26 Oldham Athletic
Feb. 2 Fulham
9 Sunderland
16 Swansea City
23 West Ham United
Mar. 1 Swanssea City
8 Preston North End
14 Cardiff City
21 Queens Park Rangers
28 Bury
Apr. 4 Charlton Athletic
11 Watford
18 Shrewsbury Town
25 Wrexham
May 3 Newcastle United
10 F.A. Cup Final

Aug. 11 Gillingham (L.C. 1, 1L)
14 Gillingham (L.C. 1, 2L)
18 Cambridge United
25 Bristol Rovers
Sept. 8 Swansea City
15 Notts County
22 Oldham Athletic
29 Fulham
Oct. 9 Bristol Rovers
13 Sunderland
20 West Ham United
27 Preston North End
Nov. 3 Cambridge United
10 Queens Park Rangers
17 Bury
24 Shrewsbury City
Dec. 1 Shrewsbury Town
8 Newcastle United
15 Wrexham
21 Charlton Athletic
28 Watford
Jan. 5 Swindon Town (FAC 3)
12 Leicester City
19 Notts County
26 Oldham Athletic
Feb. 2 Fulham
9 Sunderland
16 Swansea City
23 West Ham United
Mar. 1 Swanssea City
8 Preston North End
14 Cardiff City
21 Queens Park Rangers
28 Bury
Apr. 4 Charlton Athletic
11 Watford
18 Shrewsbury Town
25 Wrexham
May 3 Newcastle United
10 F.A. Cup Final

Aug. 11 Gillingham (L.C. 1, 1L)
14 Gillingham (L.C. 1, 2L)
18 Cambridge United
25 Bristol Rovers
Sept. 8 Swansea City
15 Notts County
22 Oldham Athletic
29 Fulham
Oct. 9 Bristol Rovers
13 Sunderland
20 West Ham United
27 Preston North End
Nov. 3 Cambridge United
10 Queens Park Rangers
17 Bury
24 Shrewsbury City
Dec. 1 Shrewsbury Town
8 Newcastle United
15 Wrexham
21 Charlton Athletic
28 Watford
Jan. 5 Swindon Town (FAC 3)
12 Leicester City
19 Notts County
26 Oldham Athletic
Feb. 2 Fulham
9 Sunderland
16 Swansea City
23 West Ham United
Mar. 1 Swanssea City
8 Preston North End
14 Cardiff City
21 Queens Park Rangers
28 Bury
Apr. 4 Charlton Athletic
11 Watford
18 Shrewsbury Town
25 Wrexham
May 3 Newcastle United
10 F.A. Cup Final

Aug. 11 Gillingham (L.C. 1, 1L)
14 Gillingham (L.C. 1, 2L)
18 Cambridge United
25 Bristol Rovers
Sept. 8 Swansea City
15 Notts County
22 Oldham Athletic
29 Fulham
Oct. 9 Bristol Rovers
13 Sunderland
20 West Ham United
27 Preston North End
Nov. 3 Cambridge United
10 Queens Park Rangers
17 Bury
24 Shrewsbury City
Dec. 1 Shrewsbury Town
8 Newcastle United
15 Wrexham
21 Charlton Athletic
28 Watford
Jan. 5 Swindon Town (FAC 3)
12 Leicester City
19 Notts County
26 Oldham Athletic
Feb. 2 Fulham
9 Sunderland
16 Swansea City
23 West Ham United
Mar. 1 Swanssea City
8 Preston North End
14 Cardiff City
21 Queens Park Rangers
28 Bury
Apr. 4 Charlton Athletic
11 Watford
18 Shrewsbury Town
25 Wrexham
May 3 Newcastle United
10 F.A. Cup Final

Aug. 11 Gillingham (L.C. 1, 1L)
14 Gillingham (L.C. 1, 2L)
18 Cambridge United
25 Bristol Rovers
Sept. 8 Swansea City
15 Notts County
22 Oldham Athletic
29 Fulham
Oct. 9 Bristol Rovers
13 Sunderland
20 West Ham United
27 Preston North End
Nov. 3 Cambridge United
10 Queens Park Rangers
17 Bury
24 Shrewsbury City
Dec. 1 Shrewsbury Town
8 Newcastle United
15 Wrexham
21 Charlton Athletic
28 Watford
Jan. 5 Swindon Town (FAC 3)
12 Leicester City
19 Notts County
26 Oldham Athletic
Feb. 2 Fulham
9 Sunderland
16 Swansea City
23 West Ham United
Mar. 1 Swanssea City
8 Preston North End
14 Cardiff City
21 Queens Park Rangers
28 Bury
Apr. 4 Charlton Athletic
11 Watford
18 Shrewsbury Town
25 Wrexham
May 3 Newcastle United
10 F.A. Cup Final

Aug. 11 Gillingham (L.C. 1, 1L)
14 Gillingham (L.C. 1, 2L)
18 Cambridge United
25 Bristol Rovers
Sept. 8 Swansea City
15 Notts County
22 Oldham Athletic
29 Fulham
Oct. 9 Bristol Rovers
13 Sunderland
20 West Ham United
27 Preston North End
Nov. 3 Cambridge United
10 Queens Park Rangers
17 Bury
24 Shrewsbury City
Dec. 1 Shrewsbury Town
8 Newcastle United
15 Wrexham
21 Charlton Athletic
28 Watford
Jan. 5 Swindon Town (FAC 3)
12 Leicester City
19 Notts County
26 Oldham Athletic
Feb. 2 Fulham
9 Sunderland
16 Swansea City
23 West Ham United
Mar. 1 Swanssea City
8 Preston North End
14 Cardiff City
21 Queens Park Rangers
28 Bury
Apr. 4 Charlton Athletic
11 Watford
18 Shrewsbury Town
25 Wrexham
May 3 Newcastle United
10 F.A. Cup Final

Aug. 11 Gillingham (L.C. 1, 1L)
14 Gillingham (L.C. 1, 2L)
18 Cambridge United
25 Bristol Rovers
Sept. 8 Swansea City
15 Notts County
22 Oldham Athletic
29 Fulham
Oct. 9 Bristol Rovers
13 Sunderland
20 West Ham United
27 Preston North End
Nov. 3 Cambridge United
10 Queens Park Rangers
17 Bury
24 Shrewsbury City
Dec. 1 Shrewsbury Town
8 Newcastle United
15 Wrexham
21 Charlton Athletic
28 Watford
Jan. 5 Swindon Town (FAC 3)
12 Leicester City
19 Notts County
26 Oldham Athletic
Feb. 2 Fulham
9 Sunderland
16 Swansea City
23 West Ham United
Mar. 1 Swanssea City
8 Preston North End
14 Cardiff City
21 Queens Park Rangers
28 Bury
Apr. 4 Charlton Athletic
11 Watford
18 Shrewsbury Town
25 Wrexham
May 3 Newcastle United
10 F.A. Cup Final

Aug. 11 Gillingham (L.C. 1, 1L)
14 Gillingham (L.C. 1, 2L)
18 Cambridge United
25 Bristol Rovers
Sept. 8 Swansea City
15 Notts County
22 Oldham Athletic
29 Fulham
Oct. 9 Bristol Rovers
13 Sunderland
20 West Ham United
27 Preston North End
Nov. 3 Cambridge United
10 Queens Park Rangers
17 Bury
24 Shrewsbury City
Dec. 1 Shrewsbury Town
8 Newcastle United
15 Wrexham
21 Charlton Athletic
28 Watford
Jan. 5 Swindon Town (FAC 3)
12 Leicester City
19 Notts County
26 Oldham Athletic
Feb. 2 Fulham
9 Sunderland
16 Swansea City
23 West Ham United
Mar. 1 Swanssea City
8 Preston North End
14 Cardiff City
21 Queens Park Rangers
28 Bury
Apr. 4 Charlton Athletic
11 Watford
18 Shrewsbury Town
25 Wrexham
May 3 Newcastle United
10 F.A. Cup Final

Aug. 11 Gillingham (L.C. 1, 1L)
14 Gillingham (L.C. 1, 2L)
18 Cambridge United
25 Bristol Rovers
Sept. 8 Swansea City
15 Notts County
22 Oldham Athletic
29 Fulham
Oct. 9 Bristol Rovers
13 Sunderland
20 West Ham United
27 Preston North End
Nov. 3 Cambridge United
10 Queens Park Rangers
17 Bury
24 Shrewsbury City
Dec. 1 Shrewsbury Town
8 Newcastle United
15 Wrexham
21 Charlton Athletic
28 Watford
Jan. 5 Swindon Town (FAC 3)
12 Leicester City
19 Notts County
26 Oldham Athletic
Feb. 2 Fulham
9 Sunderland
16 Swansea City
23 West Ham United
Mar. 1 Swanssea City
8 Preston North End
14 Cardiff City
21 Queens Park Rangers
28 Bury
Apr. 4 Charlton Athletic
11 Watford
18 Shrewsbury Town
25 Wrexham
May 3 Newcastle United
10 F.A. Cup Final

Aug. 11 Gillingham (L.C. 1, 1L)
14 Gillingham (L.C. 1, 2L)
18 Cambridge United
25 Bristol Rovers
Sept. 8 Swansea City
15 Notts County
22 Oldham Athletic
29 Fulham
Oct. 9 Bristol Rovers
13 Sunderland
20 West Ham United
27 Preston North End
Nov. 3 Cambridge United
10 Queens Park Rangers
17 Bury
24 Shrewsbury City
Dec. 1 Shrewsbury Town
8 Newcastle United
15 Wrexham
21 Charlton Athletic
28 Watford
Jan. 5 Swindon Town (FAC 3)
12 Leicester City
19 Notts County
26 Oldham Athletic
Feb. 2 Fulham
9 Sunderland
16 Swansea City
23 West Ham United
Mar. 1 Swanssea City
8 Preston North End
14 Cardiff City
21 Queens Park Rangers
28 Bury
Apr. 4 Charlton Athletic
11 Watford
18 Shrewsbury Town
25 Wrexham
May 3 Newcastle United
10 F.A. Cup Final

Aug. 11 Gillingham (L.C. 1, 1L)
14 Gillingham (L.C. 1, 2L)
18 Cambridge United
25 Bristol Rovers
Sept. 8 Swansea City
15 Notts County
22 Oldham Athletic
29 Fulham
Oct. 9 Bristol Rovers
13 Sunderland
20 West Ham United
27 Preston North End
Nov. 3 Cambridge United
10 Queens Park Rangers
17 Bury
24 Shrewsbury City
Dec. 1 Shrewsbury Town
8 Newcastle United
15 Wrexham
21 Charlton Athletic
28 Watford
Jan. 5 Swindon Town (FAC 3)
12 Leicester City
19 Notts County
26 Oldham Athletic
Feb. 2 Fulham
9 Sunderland
16 Swansea City
23 West Ham United
Mar. 1 Swanssea City
8 Preston North End
14 Cardiff City
21 Queens Park Rangers
28 Bury
Apr. 4 Charlton Athletic
11 Watford
18 Shrewsbury Town
25 Wrexham
May 3 Newcastle United
10 F.A. Cup Final

Aug. 11 Gillingham (L.C. 1, 1L)
14 Gillingham (L.C. 1, 2L)
18 Cambridge United
25 Bristol Rovers
Sept. 8 Swansea City
15 Notts County
22 Oldham Athletic
29 Fulham
Oct. 9 Bristol Rovers
13 Sunderland
20 West Ham United
27 Preston North End
Nov. 3 Cambridge United
10 Queens Park Rangers
17 Bury
24 Shrewsbury City
Dec. 1 Shrewsbury Town
8 Newcastle United
15 Wrexham
21 Charlton Athletic
28 Watford
Jan. 5 Swindon Town (FAC 3)
12 Leicester City
19 Notts County
26 Oldham Athletic
Feb. 2 Fulham
9 Sunderland
16 Swansea City
23 West Ham United
Mar. 1 Swanssea City
8 Preston North End
14 Cardiff City
21 Queens Park Rangers
28 Bury
Apr. 4 Charlton Athletic
11 Watford
18 Shrewsbury Town
25 Wrexham
May 3 Newcastle United
10 F.A. Cup Final

Aug. 11 Gillingham (L.C. 1, 1L)
14 Gillingham (L.C. 1, 2L)
18 Cambridge United
25 Bristol Rovers
Sept. 8 Swansea City
15 Notts County
22 Oldham Athletic
29 Fulham
Oct. 9 Bristol Rovers
13 Sunderland
20 West Ham United
27 Preston North End
Nov. 3 Cambridge United
10 Queens Park Rangers
17 Bury
24 Shrewsbury City
Dec. 1 Shrewsbury Town
8 Newcastle United
15 Wrexham
21 Charlton Athletic
28 Watford
Jan. 5 Swindon Town (FAC 3)
12 Leicester City
19 Notts County
26 Oldham Athletic
Feb. 2 Fulham
9 Sunderland
16 Swansea City
23 West Ham United
Mar. 1 Swanssea City
8 Preston North End
14 Cardiff City
21 Queens Park Rangers
28 Bury
Apr. 4 Charlton Athletic
11 Watford
18 Shrewsbury Town
25 Wrexham
May 3 Newcastle United
10 F.A. Cup Final

Aug. 11 Gillingham (L.C. 1, 1L)
14 Gillingham (L.C. 1, 2L)
18 Cambridge United
25 Bristol Rovers
Sept. 8 Swansea City
15 Notts County
22 Oldham Athletic
29 Fulham
Oct. 9 Bristol Rovers
13 Sunderland
20 West Ham United
27 Preston North End
Nov. 3 Cambridge United
10 Queens Park Rangers
17 Bury
24 Shrewsbury City
Dec. 1 Shrewsbury Town
8 Newcastle United
15 Wrexham
21 Charlton Athletic
28 Watford
Jan. 5 Swindon Town (FAC 3)
12 Leicester City
19 Notts County
26 Oldham Athletic
Feb. 2 Fulham
9 Sunderland
16 Swansea City
23 West Ham United
Mar. 1 Swanssea City
8 Preston North End
14 Cardiff City
21 Queens Park Rangers
28 Bury
Apr. 4 Charlton Athletic
11 Watford
18 Shrewsbury Town
25 Wrexham
May 3 Newcastle United
10 F.A. Cup Final

Aug. 11 Gillingham (L.C. 1, 1L)
14 Gillingham (L.C. 1, 2L)
18 Cambridge United
25 Bristol Rovers
Sept. 8 Swansea City
15 Notts County
22 Oldham Athletic
29 Fulham
Oct. 9 Bristol Rovers
13 Sunderland
20 West Ham United
27 Preston North End
Nov. 3 Cambridge United
10 Queens Park Rangers
17 Bury
24 Shrewsbury City
Dec. 1 Shrewsbury Town
8 Newcastle United
15 Wrexham
21 Charlton Athletic
28 Watford
Jan. 5 Swindon Town (FAC 3)
12 Leicester City
19 Notts County
26 Oldham Athletic
Feb. 2 Fulham
9 Sunderland
16 Swansea City
23 West Ham United
Mar. 1 Swanssea City
8 Preston North End
14 Cardiff City
21 Queens Park Rangers
28 Bury
Apr. 4 Charlton Athletic
11 Watford
18 Shrewsbury Town
25 Wrexham
May 3 Newcastle United
10 F.A. Cup Final

Aug. 11 Gillingham (L.C. 1, 1L)
14 Gillingham (L.C. 1, 2L)
18 Cambridge United
25 Bristol Rovers
Sept. 8 Swansea City
15 Notts County
22 Oldham Athletic
29 Fulham
Oct. 9 Bristol Rovers
13 Sunderland
20 West Ham United
27 Preston North End
Nov. 3 Cambridge United
10 Queens Park Rangers
17 Bury
24 Shrewsbury City
Dec. 1 Shrewsbury Town
8 Newcastle United
15 Wrexham
21 Charlton Athletic
28 Watford
Jan. 5 Swindon Town (FAC 3)
12 Leicester City
19 Notts County
26 Oldham Athletic
Feb. 2 Fulham
9 Sunderland
16 Swansea City
23 West Ham United
Mar. 1 Swanssea City
8 Preston North End
14 Cardiff City
21 Queens Park Rangers
28 Bury
Apr. 4 Charlton Athletic
11 Watford
18 Shrewsbury Town
25 Wrexham
May 3 Newcastle United
10 F.A. Cup Final

Aug. 11 Gillingham (L.C. 1, 1L)
14 Gillingham (L.C. 1, 2L)
18 Cambridge United
25 Bristol Rovers
Sept. 8 Swansea City
15 Notts County
22 Oldham Athletic
29 Fulham
Oct. 9 Bristol Rovers
13 Sunderland
20 West Ham United
27 Preston North End
Nov. 3 Cambridge United
10 Queens Park Rangers
17 Bury
24 Shrewsbury City
Dec. 1 Shrewsbury Town
8 Newcastle United
15 Wrexham
21 Charlton Athletic
28 Watford
Jan. 5 Swindon Town (FAC 3)
12 Leicester City
19 Notts County
26 Oldham Athletic
Feb. 2 Fulham
9 Sunderland
16 Swansea City
23 West Ham United
Mar. 1 Swanssea City
8 Preston North End
14 Cardiff City
21 Queens Park Rangers
28 Bury
Apr. 4 Charlton Athletic
11 Watford
18 Shrewsbury Town
25 Wrexham
May 3 Newcastle United
10 F.A. Cup Final

Aug. 11 Gillingham (L.C. 1, 1L)
14 Gillingham (L.C. 1, 2L)
18 Cambridge United
25 Bristol Rovers
Sept. 8 Swansea City
15 Notts County
22 Oldham Athletic
29 Fulham
Oct. 9 Bristol Rovers
13 Sunderland
20 West Ham United
27 Preston North End
Nov. 3 Cambridge United
10 Queens Park Rangers
17 Bury
24 Shrewsbury City
Dec. 1 Shrewsbury Town
8 Newcastle United
15 Wrexham
21 Charlton Athletic
28 Watford
Jan. 5 Swindon Town (FAC 3)
12 Leicester City
19 Notts County
26 Oldham Athletic
Feb. 2 Fulham
9 Sunderland
16 Swansea City
23 West Ham United
Mar. 1 Swanssea City
8 Preston North End
14 Cardiff City
21 Queens Park Rangers
28 Bury
Apr. 4 Charlton Athletic
11 Watford
18 Shrewsbury Town
25 Wrexham
May 3 Newcastle United
10 F.A. Cup Final

Aug. 11 Gillingham (L.C. 1, 1L)
14 Gillingham (L.C. 1, 2L)
18 Cambridge United
25 Bristol Rovers
Sept. 8 Swansea City
15 Notts County
22 Oldham Athletic
29 Fulham
Oct. 9 Bristol Rovers
13 Sunderland
20 West Ham United
27 Preston North End
Nov. 3 Cambridge United
10 Queens Park Rangers
17 Bury
24 Shrewsbury City
Dec. 1 Shrewsbury Town
8 Newcastle United
15 Wrexham
21 Charlton Athletic
28 Watford
Jan. 5 Swindon Town (FAC 3)
12 Leicester City
19 Notts County
26 Oldham Athletic
Feb. 2 Fulham
9 Sunderland
16 Swansea City
23 West Ham United
Mar. 1 Swanssea City
8 Preston North End
14 Cardiff City
21 Queens Park Rangers
28 Bury
Apr. 4 Charlton Athletic
11 Watford
18 Shrewsbury Town
25 Wrexham
May 3 Newcastle United
10 F.A. Cup Final

Aug. 11 Gillingham (L.C. 1, 1L)
14 Gillingham (L.C. 1, 2L)
18 Cambridge United
25 Bristol Rovers
Sept. 8 Swansea City
15 Notts County
22 Oldham Athletic
29 Fulham
Oct. 9 Bristol Rovers
13 Sunderland
20 West Ham United
27 Preston North End
Nov. 3 Cambridge United
10 Queens Park Rangers
17 Bury
24 Shrewsbury City
Dec. 1 Shrewsbury Town
8 Newcastle United
15 Wrexham
21 Charlton Athletic
28 Watford
Jan. 5 Swindon Town (FAC 3)
12 Leicester City
19 Notts County
26 Oldham Athletic
Feb. 2 Fulham
9 Sunderland
16 Swansea City
23 West Ham United
Mar. 1 Swanssea City
8 Preston North End
14 Cardiff City
21 Queens Park Rangers
28 Bury
Apr. 4 Charlton Athletic
11 Watford
18 Shrewsbury Town
25 Wrexham
May 3 Newcastle United
10 F.A. Cup Final

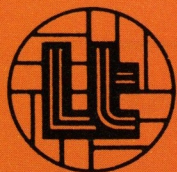
Aug. 11 Gillingham (L.C. 1, 1L)
14 Gillingham (L.C. 1, 2L)
18 Cambridge United
25 Bristol Rovers
Sept. 8 Swansea City
15 Notts County
22 Oldham Athletic
29 Fulham
Oct. 9 Bristol Rovers
13 Sunderland
20 West Ham United
27 Preston North End
Nov. 3 Cambridge United
10 Queens Park Rangers
17 Bury
24 Shrewsbury City
Dec. 1 Shrewsbury Town
8 Newcastle United
15 Wrexham
21 Charlton Athletic
28 Watford
Jan. 5 Swindon Town (FAC 3)
12 Leicester City
19 Notts County
26 Oldham Athletic
Feb. 2 Fulham
9 Sunderland
16 Swansea City
23 West Ham United
Mar. 1 Swanssea City
8 Preston North End
14 Cardiff City
21 Queens Park Rangers
28 Bury
Apr. 4 Charlton Athletic
11 Watford
18 Shrewsbury Town
25 Wrexham
May 3 Newcastle United
10 F.A. Cup Final

Aug. 11 Gillingham (L.C. 1, 1L)
14 Gillingham (L.C. 1, 2L)
18 Cambridge United
25 Bristol Rovers
Sept. 8 Swansea City
15 Notts County
22 Oldham Athletic
29 Fulham
Oct. 9 Bristol Rovers
13 Sunderland
20 West Ham United
27 Preston North End
Nov. 3 Cambridge United
10 Queens Park Rangers
17 Bury
24 Shrewsbury City
Dec. 1 Shrewsbury Town
8 Newcastle United
15 Wrexham
21 Charlton Athletic
28 Watford
Jan. 5 Swindon Town (FAC 3)
12 Leicester City
19 Notts County
26 Oldham Athletic
Feb. 2 Fulham
9 Sunderland
16 Swansea City
23 West Ham United
Mar. 1 Swanssea City
8 Preston North End
14 Cardiff City
21 Queens Park Rangers
28 Bury
Apr. 4 Charlton Athletic
11 Watford
18 Shrewsbury Town
25 Wrexham
May 3 Newcastle United
10 F.A. Cup Final

Aug. 11 Gillingham (L.C. 1, 1L)
14 Gillingham (L.C. 1, 2L)
18 Cambridge United
25 Bristol Rovers
Sept. 8 Swansea City
15 Notts County
22 Oldham Athletic
29 Fulham
Oct. 9 Bristol Rovers
13 Sunderland
20 West Ham United
27 Preston North End
Nov. 3 Cambridge United
10 Queens Park Rangers
17 Bury
24 Shrewsbury City
Dec. 1 Shrewsbury Town
8 Newcastle United
15 Wrexham
21 Charlton Athletic
28 Watford
Jan. 5 Swindon Town (FAC 3)
12 Leicester City
19 Notts County
26 Oldham Athletic
Feb. 2 Fulham
9 Sunderland
16 Swansea City
23 West Ham United
Mar. 1 Swanssea City
8 Preston North End
14 Cardiff City
21 Queens Park Rangers
28 Bury
Apr. 4 Charlton Athletic
11 Watford
18 Shrewsbury Town
25 Wrexham
May 3 Newcastle United
10 F.A. Cup Final

Aug. 11 Gillingham (L.C. 1, 1L)
14 Gillingham (L.C. 1, 2L)
18 Cambridge United
25 Bristol Rovers
Sept. 8 Swansea City
15 Notts County
22 Oldham Athletic
29 Fulham
Oct. 9 Bristol Rovers
13 Sunderland
20 West Ham United
27 Preston North End
Nov. 3 Cambridge United
10 Queens Park Rangers
17 Bury
24 Shrewsbury City
Dec. 1 Shrewsbury Town
8 Newcastle United
15 Wrexham
21 Charlton Athletic
28 Watford
Jan. 5 Swindon Town (FAC 3)
12 Leicester City
19 Notts County
26 Oldham Athletic
Feb. 2 Fulham
9 Sunderland
16 Swansea City
23 West Ham United
Mar. 1 Swanssea City
8 Preston North End
14 Cardiff City
21 Queens Park Rangers
28 Bury
Apr. 4 Charlton Athletic
11 Watford
18 Shrewsbury Town
25 Wrexham
May 3 Newcastle United
10 F.A. Cup Final

Aug. 11 Gillingham (L.C. 1, 1L)
14 Gillingham (L.C. 1, 2L)
18 Cambridge United
25 Bristol Rovers
Sept. 8 Swansea City
15 Notts County
22 Oldham Athletic
29 Fulham
Oct. 9 Bristol Rovers
13 Sunderland
20 West Ham United
27 Preston North End
Nov. 3



THE TEAMS



LUTON TOWN		BURNLEY	
JOHN FINDLAY	1	ALAN STEVENSON	
KIRK STEPHENS	2	TONY ARINS	
MAL DONAGHY	3	IAN BRENNAN	
TONY GREALISH	4	DEREK SCOTT	
MIKE SAXBY	5	VINCE OVERSON	
PAUL PRICE	6	PAUL DIXON	
RICKY HILL	7	LEIGHTON JAMES	
ALAN WEST	8	MARTIN DOBSON	
BRIAN STEIN	9	BILLY HAMILTON	
BOB HATTON	10	MARTYN BUSBY	
DAVID MOSS	11	JOE JAKUB	
	12		

**WHERE TEAM SPIRIT COUNTS AND
OUR CUSTOMERS ALWAYS WIN**

IT PAYS TO CONSULT THE EXPERTS



**C.P. HYDRAULICS
(OVERSEAS) LTD.**

**UNIT 4, PARK STREET INDUSTRIAL ESTATE,
OSIER WAY, AYLESBURY, BUCKS.**

Telephone: Aylesbury (0296) 81032/81033

Suppliers of: Just about every type of hose (rubber and plastic) including industrial hoses, fittings, couplings etc. — Hose assemblies made to order — over £1 million of stock available for immediate delivery anywhere in the U.K.



OFFICIAL

**20
TOKEN**

MATCH OFFICIALS

Referee:
R. S. LEWIS, Great Bookham

Linesmen:
E. N. DAY, Walthamstow
(Red Flag)
K. A. MILLER, Epping
(Yellow Flag)

**OUR NEXT HOME GAME . . .
LEAGUE DIVISION TWO
Saturday 5th April, 1980**

WATFORD
Kick-off 3.00 p.m.

THIS IS AN ALL TICKET MATCH
Ticket Office open until Thursday evening