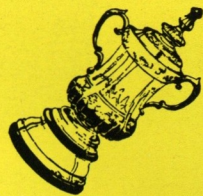


# LUTON TOWN

OFFICIAL  
MATCHDAY  
PROGRAMME



F.A. CUP THIRD ROUND  
Saturday 5th January, 1980  
LUTON TOWN v SWINDON TOWN

PRICE  
30p



TODAY'S MATCH  
SPONSOR

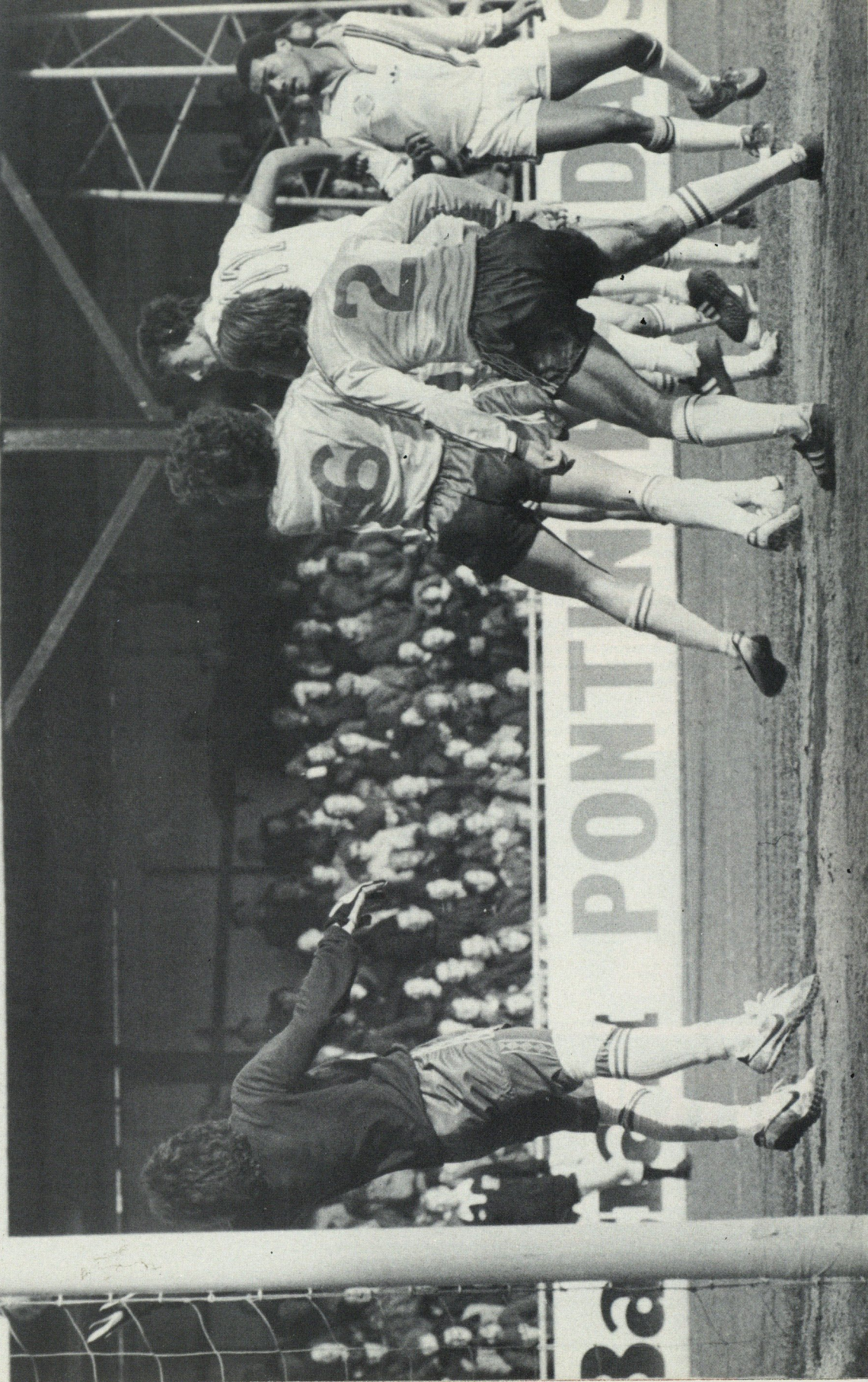






# Action

**LUTON TOWN 3 CHELSEA 3** Almost 20,000 fans saw one of the finest games of the season last Tuesday when the Town saw in the New Year with a thrilling draw against Chelsea in a pulsating top-of-the-table clash. Above: Mike Saxby towers above the Chelsea defence to head Luton's second goal. *This picture:* It's almost in . . . David Moss nods the third past Chelsea keeper Petar Borota. Pictures: Tony Ward — Evening Post-Echo.





# AROUND THE STADIUM

## TAKE OFF TO ROME WITH THE TOWN

Today, we are proud to launch an exciting new competition — and you could find yourself in Rome to watch England play in the European Championships this summer. That is the fabulous prize we, in conjunction with the generosity of Phatrael and Brian Morgan of Fine Stamps, are offering to the winner.

The competition is aimed at budding journalists. Starting with today's game, all we want you to do is to write a match report of approximately 400 words with your views and constructive criticisms on the game. We want to know how you saw the match through your own eyes, describing the excitement of the goals and all the action.

The competition will embrace every home game until the end of the season and, each week, we will select each winner and reproduce his report in the following programme. At the end of the season, a special panel will announce the overall winner.

Those supporters who travel regularly with the Bobbers Club to away matches should not have too much trouble in recognising any of these four faces. **Gareth Owen** took the picture just before our home victory over Charlton Athletic, a game the Bobbers Travel Club kindly sponsored for us.

The Bobbers Travel Club representatives, including two dressed as father Christmas, walked around the ground before the kick-off distributing presents to our fans.

There was also festive spirit provided by the Stopsley High School Band who played for carol singing before the game. It all provided fine pre-match entertainment and we would like to thank the Bobbers Travel Club, and the Stopsley High School Band for giving us their time on a bitterly cold evening.

For the record, the four people caught in our picture are: Les Miller, Jenny Russell, Pat l'Ons and Margaret Hinton.



You can enter as many times as you wish so, if your report isn't among the initial winners, have another try. The address to write to is the programme Editor, Luton Town F.C., Kenilworth Road, Luton. Entries must reach us by first post on the Wednesday following a Saturday game and envelopes should be marked "Rome Competition". All entries should be accompanied by your name and address.

We cannot enter into any correspondence and the decision of Luton Town Football Club in all matters relating to the competition will be final.

We hope you will enjoy this competition. The club wants to involve supporters at all levels and we are proud to be the first Football League club to launch a competition of this nature.

Roar into the eighties with Luton Town — you could find yourself in Rome.

### BITS AND PIECES . . . BITS AND PIECES . . . BITS AND PIECES

We were delighted to entertain Robert Runcie, the Bishop of St. Albans and Archbishop of Canterbury elect, at one of our recent games. It is nice to know our hospitality was appreciated because our distinguished guest took the trouble to write and thank us. He said: "Thank you for the way in which you looked after me over my recent visit. I enjoyed myself and was very much impressed by the whole organisation and friendly spirit of the place. I'm not surprised that it is thriving and wish you well for the rest of the season."

- Who was the member of Luton's staff who was asked by the police to blow into the dreaded bag when he was stopped on the way home after the Charlton match? We are not giving away the secret unless you happen to know who always drinks orange juice.

- It was nice to see Ken Hawkes, a member of our 1959 Cup Final side in the guests room after the match at Watford. We were also pleased to see Barry Reed, formerly a player at Kenilworth Road, at the Patrons' evening in the Hatters Club recently. Barry is currently manager of Berger Isthmian League club Barton Rovers.



# LUTON TOWN F.C.



72 Kenilworth Road  
Luton  
Tel: Luton 411622

President: T. Hodgson  
Deputy President: J. A. C. Bain  
Honorary Vice-Presidents: Lord Hill,  
Sir Reginald Pearson OBE, J. B. Brent,  
B. England, C. Holloway, L. Leppington,  
Eric Morecambe OBE, E. Waller  
Directors: Denis Mortimer (Chairman),  
R. L. Banks, D. J. Evans,  
E. S. Pearson, H. Richardson,  
R. J. Smith, J. R. Yates

Chief Executive: J. Smith  
Team Manager: D. Pleat  
Assistant Team Manager: K. Gutteridge  
Coaches: D. Coates, J. Moore  
Club Secretary: J. Wilkinson  
Assistant Secretary: W. Butler  
Physiotherapist: J. Sheridan  
Commercial Manager: M. Hardwicke  
Project and Advertising Executive:  
M. Beevor

Catering Manager: C. Hustwitt  
Official Club Photographer: Gareth Owen  
Solicitors: Latham and Co.,  
King Street, Luton  
Auditors: Hillier, Hills, Fray and Co.  
Medical Officer: W. A. C. Berry MBBS  
Match-Day Magazine published by  
Luton Town FC  
Designed and printed by  
Hemmings & Capey (Leicester) Ltd.

Like many other clubs today, we hope we are beginning on the road to Wembley. Obviously, luck plays a great part in any 'do or die' competition, and a mistake at League level can be recovered, but mistakes in Cup ties are irretrievable. I will not have to remind a handful of our players of our experience at York in last season's competition. It would be wonderful to recreate the 1959 experience exactly 20 years on.

Swindon, our opponents, have great Cup tradition. Their achievements so far this season have been startling. Amongst the front runners in the League, they are only Wolves away from the League Cup Final, having already knocked out Stoke and Arsenal after drawing away. We wish them luck in that competition, but not in this one.

It may have been a best forgotten experiment of Friday evening pre-Christmas football, but we had little cause for complaint on the night. The crowd who defied the bitter conditions saw three well taken goals and a much needed victory.

# DAVID'S DIARY

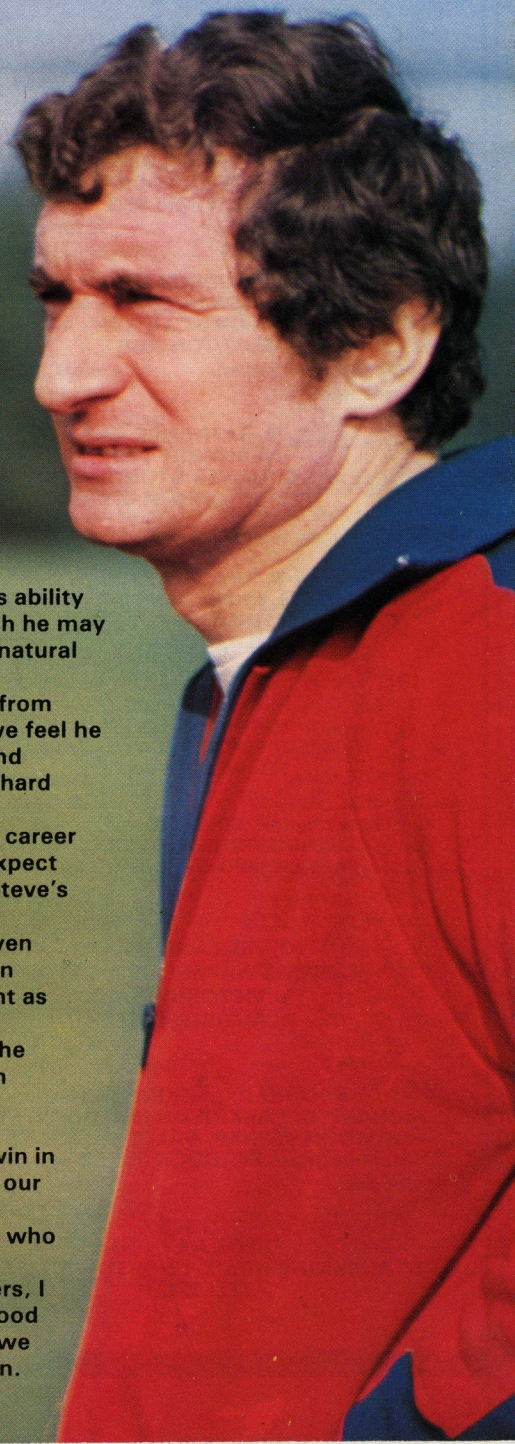
I was particularly pleased that Brian Stein scored two goals. His ability has created many chances for the side this season, and although he may have missed some chances, he has the instinctive abilities of a natural striker in being in the right place at the right time.

To add vital forward competition, we have signed Steve White from Bristol Rovers. Steve is only 20, and like anyone else we sign, we feel he can be a valued member of our first team squad. He is young and completely inexperienced, but he has an eye for a goal and is a hard worker.

I am sure everyone will wish him well for a long and successful career here. It takes time for players to settle down, and no one will expect miracles overnight, but we will certainly be looking closely at Steve's progress as he settles in.

To increase the quality and depth of our staff, we have been given the full backing of the chairman and directors. They have shown that they want success, and are prepared to back our judgement as we progress into the 80's. I hope their good faith is reflected throughout our other means of support. If our faithful fans on the terraces encourage a friend or neighbour to come to Kenilworth Road, we will soon achieve the support we need to finance the club's ambitions.

One of our most pleasing recent results was the youth team's win in the FA Youth Cup replay against talented QPR. Seamus Heath, our young Irish winger, scored a penalty and a last minute winner. We now meet West Ham on Monday evening, and I hope those who enjoy youth football will encourage our lads to a good win. Finally, on behalf of Ken Gutteridge, myself, the staff and players, I would like to thank the many supporters who have sent their good wishes at Christmas. Enjoy today's game, and I sincerely hope we shall be reflecting on a tip-top Cup tie at 4.40 p.m. this afternoon.





# Vice Presidents of Luton Town FC

A. G. BERRY ESQ.  
BRENGREEN HOLDINGS LTD.  
61 CHEAPSIDE LONDON EC2V 6AX  
TEL: 01-248 6026

C. J. HUDSON ESQ.  
E. W. HUDSON HOLDINGS LTD.  
6 UNION ST. LUTON  
TEL: LUTON 30511

R. S. SAFRANEK ESQ.  
NEAHURST LTD.  
LONDON RD. LOWER STONDON, HITCHIN  
TEL: HITCHIN 94-813545

N. S. FOOKES ESQ.  
N. S. FOOKES, ENGINEERING SERVICES LTD.  
45 LATIMER ROAD, LUTON  
TEL: LUTON 26139

R. W. UNWIN ESQ.  
R. W. UNWIN & CO. LTD.  
PROSPECT PLACE, WELWYN HERTS.  
TEL: WELWYN 6441

B. COLE ESQ.  
CLEANDUSTRIAL SERVICES LTD.  
PALMERS GREEN LONDON N13

G. HOLLAND ESQ.  
KESTRAL WAREHOUSING LTD.  
116 VICTORIA ROAD  
ROMFORD, ESSEX

RICHARD C. LARKINSON ESQ.  
RICHARD C. LARKINSON (BALDOCK) LTD.  
STATION WORKS, BALDOCK, HERTS.  
TEL: BALDOCK 893158

S. GOLBY  
FREDK RAY LTD.  
STANBRIDGE ROAD, LEIGHTON BUZZARD  
TEL: 372241

## JOHN'S JOTTINGS



Once again we are at the start of the Wembley trail and we, like all clubs, hope this is our year. When the final is played next May, it will be 20 years since we made our first and only appearance at Wembley, and to conjure up a few memories for our supporters, here is the run down on that trail.

Our first hurdle was against Leeds United on the 10th January, 1959 at Kenilworth Road. It was a very cold afternoon, and an attendance of 18,354 saw us win 5-1. Tony Gregor (2), Billy Bingham (2) and Bob Morton scored the goals. In the next round, we were drawn away at Leicester City, and after drawing 1-1 in front of 36,984 fans we won the replay 4-1 with Alan Brown hitting a hat-trick and Tony Gregory scoring another. The gate for that replay was 27,277. In the fifth round, we were again drawn away, this time to Ipswich Town, and the team had their scoring boots on again, winning 5-2 with Bob Martin (2), Bingham, Gregory and Pacey scoring the goals.

Lady Luck wasn't smiling on us at all, because we were again drawn away in the sixth round, this time to Blackpool, who included in their side such great names as George Farm, Jimmy Armfield, Stanley Matthews, Jackie Mudie, Ray Charnley. After achieving a 1-1 draw (Bingham), we won the replay at Luton 1-0, with Alan Brown scoring against his old club. Incidentally, the gate that day was 30,069, which is still a ground record for us.

March 14th, 1959 was semi-final day, and we were drawn against the then Third Division side, Norwich City, who included in their side the former Luton player, Bobby Brennan, and in later years our former chief coach, Roy McCrohan. It was all square at 1-1 at the close. This match was played at White Hart Lane. The replay was at St. Andrews, Birmingham, and after a tense game, Billy Bingham scored the only goal to see us through to Wembley.

That final must have been one of the most colourful crowd scenes ever, as most of our supporters took to wearing the straw boater. The red and white of our opponents, Nottingham Forest, made a grand contrast to our black and white. The game itself was a disaster for Luton fans and, as the record books show, we were beaten 2-1. The game was marred by Roy Dwight breaking his leg after a collision with Brendan McNally. Dave Pacey scored our goal in the second half.

However, the result apart, we had a wonderful day and an experience I will never forget. At least we can say that we have been to Wembley, to experience the atmosphere at close quarters, and that is why every club hopes this will be their year. The two teams that day were: Luton: Baynham, McNally, Hawkes, Groves, Owen, Pacey, Bingham, Brown, Morton, Cummins, Gregory.

Nottingham Forest: Thomson, Whare, McDonald, Whitefoot, McKinlay, Burkitt, Dwight, Quigley, Wilson, Gray, Imlach.

John Wilkinson

## COMMERCIAL CORNER

### NEWS FROM THE POOLS

Start 1980 with a Revolution! The watch illustrated here is an instrument with a difference. It is a fantastic breakthrough in presentation and magic visual effect. Now you see it — now you don't. Every 30 seconds there is a visual change. First the club badge appears in full colour then gradually defuses until only the second hand is seen. Then, the cycle repeats itself.



These watches are exclusive to Luton Town Football Club, made in Geneva to our specification with a quality movement, housed in a gold plated case with a high quality leather strap. We have even designed a 'Unisex' sized watch! Supplies are limited, and at a cost of £25, a real winner. You can make your purchase at either the souvenir shops *on the ground*, or at the Pools Office *at any time*. This latest product for the Hatters must be seen to be believed.

### LET'S HEAR FROM YOU

We are now into the second half of the season and this is the 14th edition of our Match Day Magazine. Many of you have written to us praising the new style and we hope you like the introduction of new ideas including 'Tricentral into the 80s' and the 'Photravel/Fine Stamp Match Day Editorial' competitions. Next week, we publish a special Leicester City magazine which will include a re-print of the 1953 Luton v Leicester City programme.

These promotions are aimed at giving our supporters value for money, entertainment and, above all else, opportunities for Town fans to involve themselves with the club. We want to cater for everybody from the terrace supporters to the area's businessmen who have generously backed us this season.

We hope you have enjoyed our pre-match entertainment, the programme and our performances on the pitch. However, we are open to suggestions, especially concerning any possible improvements to the programme. So why not drop the programme editor a line at 70/72 Kenilworth Road, Luton.

### TODAY'S REFEREE

DOWNEY, COLIN (Hounslow, Middlesex). Commenced refereeing with Middlesex FA in 1965 and has progressed via Spartan and Rothmans's Isthmian League to the Football League list. Refereed an Anglo-Italian semi-professional tournament in 1976, also the Middlesex County Senior Charity Cup Final. Has also refereed other League and County Cup finals. In 1977 was Linesman in the second round UEFA Cup and lined an International in 1979.

MEMBERS OF THE

## Vice Presidents Suite

Blue Arrow Staff Bureau  
3 Holywell Hill, St. Albans  
Herts.  
Phone St. Albans 61373

Drapers Coaches  
117B Gardenia Avenue  
Luton  
Phone Luton 597391

Filmergraphic Associates  
Alton Road, Luton  
Phone Luton 36407

N. S. Fookes  
N. S. Fookes Engineering  
Services Ltd.  
45 Latimer Road, Luton  
Phone Luton 26783

Mr. I. E. Holmes  
Ivor Holmes Ltd.  
82-88 Marsh Road, Luton  
Phone 56622

E. W. Hudson Holdings Ltd  
Union Street, Luton  
Phone 30511

Richard C. Larkinson, Esq.  
Richard C. Larkinson  
(Baldock) Ltd.  
Station Works, Baldock  
Herts.

Dr. & Mrs. G. L. Plester  
9 Briars Close  
Nuneaton  
Warwickshire

L. W. Wainwright  
Fredk. Ray Ltd.  
Stanbridge Road  
Leighton Buzzard  
Phone 372241

Robinson Metal (Luton) Ltd  
Caleb Close  
464 Dunstable Road, Luton  
Phone Luton 53866

R & J Travis Ltd.  
Northbridge Road,  
Berkhamsted  
Phone Berkhamsted 5303

Mr. R. FitzPatrick  
Pre Hotel, Redbourn Road,  
St. Albans, Herts AL3 6JZ

Chiltern Installations  
28/32 George Street  
Luton  
Phone Luton 28308/9

Euro-Exhaust Centre  
233 Dunstable Road  
Luton  
Phone Luton 38651

Fine Stamps Ltd.  
Bilton Way, Luton  
Phone 36761

Brian E. Handscombe  
(Life and Pensions Broker)  
22 Cardiff Road  
Luton  
Phone Luton 24404

John Hooper (Builders) Ltd.  
.66 Chase Street  
Luton  
Phone Luton 412525

Mark James (Salvage) Ltd  
16 West Street, Dunstable  
Phone Dunstable 605944

P. Laycock  
Luton Sports Press  
Hazelbury Crescent  
Luton  
Phone 28757

A. Hunter, Esq.  
Ravenmere Ltd.  
Allric House  
21 Farley Hill, Luton  
Phone Luton 32640

Richmond Electronics  
(Markyate) Ltd.  
Hicks Road, Markyate  
Herts.  
Phone Luton 840761

T. & H. Tyre Services Ltd.  
Manor Road  
Luton  
Phone Luton 27665

Mr. E. Fountain  
Vauxhall Motors  
Luton



# TOWN-TOPICS

## CENTURY CLUB NEWS, VIEWS

What a happy Christmas we have experienced at Kenilworth Road. We managed to celebrate the 3-0 victory over Charlton before watching the last gasp victory over Watford on Boxing Day. We offer our congratulations to David Pleat and his team and hope we can record as much success in the New Year.

We enjoyed the festive season in the Century Club with our own Christmas party where we held the draw for our annual raffle. It was conducted by our friends from the pools office and Bobbers Travel Club, who joined us for the evening, in addition to our Supporter of the Year, Wendy White. A full list of winners is available from Catherine Ball. We also owe our thanks to the generous members who provided and sold tickets.

Our members are looking forward to our next home games with keen anticipation, and we would ask you to book your guests' tickets and seats well in advance because of our growing support which has delighted us all.

Today, we welcome our visitors from Swindon and hope their supporters enjoy themselves in the Century Club before and after the game. We shall all be in good voice to cheer our lads on.

Finally, we extend our greeting to our new player, Steve White. We hope he has a long and happy association with the football club and look forward to welcoming him in the Century Club.

## FROM THE JUNIOR HATTERS CLUB

Today, we are devoting the Junior Hatters space in the programme to two competitions. The first is aimed at members who are under 12 on 5th January, 1980. The questions are: 1. Name the team, trainer and manager of the 1959 Luton Town Cup Final side. 2. What is the best progress made by Luton Town in the F.A. Cup since we appeared in the final?

Our second competition is open to all members who are over 12 on 5th January, 1980. It concerns the re-organisation of the Junior Hatters Club which we hope to implement at the start of next season. We want to hear from you with your views on what you would like to see incorporated into the Junior Hatters scheme. To give you time to think about both competitions, we have extended the closing date until last post on 31st January. The second competition should be limited to 100 words and all entries should be forwarded to: Junior Hatters Competition, Luton Town Football Club, Kenilworth Road, Luton. Please enclose your membership number and your age at 5th January.

Many of our Junior Hatters members enquire about travel facilities. We must point out that the club is entirely divorced from any away travelling facilities and details can be obtained from Jenny Russell of the Bobbers Travel Club (Luton 423916). You must be a member of the club, but it is simple to join and costs very little.

Alternatively, Tricentrol Travel,

Dunstable, often operate coaches and they have an agency in the West Side Centre where further enquiries can be made. Finally, we wish all our members a happy New Year — enjoy today's Cup tie.

## HATTERS COMMUNITY ARENA

The Luton Town players connected with the five-a-side competition are: Jake Findlay, Bob Hatton, Kirk Stephens, Mal Donaghy, Tony Grealish, Mike Saxby, Paul Price, Ricky Hill, Alan West, Brian Stein, David Moss, Mark Aizlewood, Alan Judge, Wayne Turner, Graham Jones, Godfrey Ingram, Les Harriott and Clive Goodyear. The progress of this interesting competition will be given in future match-day programmes.

The football coaching course which has just been completed was a huge success with all places being taken. The certificates will be presented to the successful boys before the Notts County game. The next course starts at Easter. Further details will soon be announced on the Coca-Cola soccer schemes which will be run in Luton.

There is still room for more under 12s and under 16s for our netball tournament at Easter. Teams will compete for the Denis Mortimer and Ken Woodbridge Trophies. There is also a soccer coaching course for girls which is planned to start in May. There are also plans for a boxing "Come And Try It" course. Further details will be announced soon.

Ideas are still wanted for future activities tournaments and courses. Mike Iacono is waiting to hear from you at Marsh House Centre, Bramingham Road, Luton.

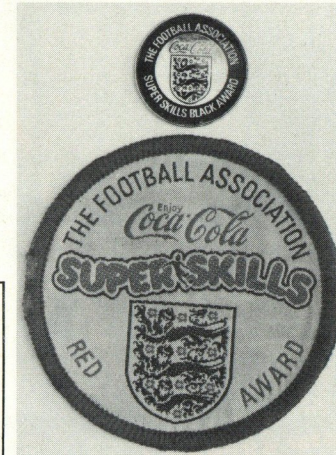
## PAUSE FOR A COACHING BREAK

We are delighted to welcome 50 boys from the Evening Post-Echo/Luton Recreational Services Coaching Course who are entertaining us this afternoon with a SuperSkills demonstration. Under the direction of FA Regional Coach Keith Wright, Colin Morris from the Bedfordshire Coaches Association and Luton's Mike Beevor.

SuperSkills is an award scheme promoted by the Football Association

and the English Schools Football Association and sponsored by Coca-Cola which aims to get all young people practicing their football skills.

If you are between seven and 16 and interested in winning the handsome badges you can see illustrated in today's match programme, then all you have to do is pass the tests and send off to the address below.



Practice does not make perfect it makes permanent. Therefore, it may be deduced that if players practice the wrong things in the wrong way they will only become good at doing the wrong things in the incorrect manner.

For this and other related reasons the Football Association in conjunction with the English Schools Football Association and generously sponsored by the Coca-Cola Company launched the SuperSkills Scheme in November 1978.

As the name of the scheme suggests, it is a series of football skills which, though not an end in themselves, will enable the young players who master them to perform better and enjoy more fully the game of Association Football.

Today you will see local boys performing some of the skills contained in the scheme. We hope you will see that practice, far from being boring, can be a lot of fun.

England manager Ron Greenwood is right behind the scheme and says: "We should never forget the importance of individual technique. It can produce not only successful football, but entertaining football and this is the message I am driving home at international level. But even the greatest players have to start somewhere and I am looking to SuperSkills to provide us with the young players who will one day be the mainstay of an exciting England team. It all begins with practice, so start now."

There are five grades of skill, with seven tests in each grade. As soon as you have mastered the tests, get your teacher or youth club leader to examine you and then apply for your badge and certificate.

The SuperSkills Manual and any other details you require can be obtained from the following address: The FA SuperSkills Award Scheme 22/24A The Broadway Darkes Lane, Potters Bar Hertfordshire

## CELEBRATING WITH A WINNER

Chief Executive John Smith and commercial manager Mike Hardwicke did a little entertaining on Christmas Eve in the Hatters Club when the 73 winners of £1,000 prizes in the club's lotteries were treated to a drink and a buffet meal at an informal gathering.

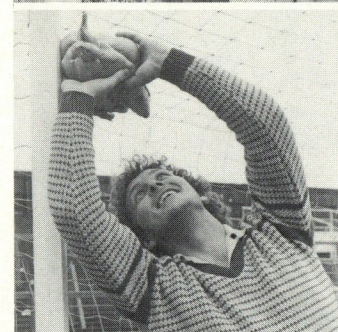
The commercial operation at Luton is now one of the most ambitious in the Football League and revenue earned from the lotteries will be used to its full advantage as the club strives for First Division status.

We plan to use the money not just to help manager David Pleat

strengthen his first team squad even further, but also to provide better facilities for the supporters.

The New Year should be a happy one for everyone connected with Luton Town. John Smith said: "Everyone is working with one aim in mind — to make Luton a better club. Mike Hardwicke and his staff have worked tremendously hard — but it could not have been possible without our army of agents and customers."

Some of the £1,000 winners are caught in a happy mood by the club's official photographer Gareth Owen.



What's all this then? Jake Findlay mucking about with fowl? There's nothing sinister about the picture because Jake was joining in a little light hearted fun on Christmas Eve when, in addition to a little party for the £1,000 lottery winners, the club's staff also received their gifts from manager David Pleat.

After showing that he can hold a bird under the bar, Jake went on to prove he's quite handy when it comes to Watford players. He played extremely well to help us secure two valuable points at Vicarage Road on Boxing Day. In fact, nothing found its way past Jake at Watford.

Picture: Gareth Owen.

## BILL BUTLER'S TICKET OFFICE

We have tickets on sale today for the home game against Leicester City next Saturday and by that date, tickets for the home match against Notts County on February 2 should also be available.

Despite many enquiries, the response for tickets for the game at Orient last Saturday was extremely disappointing. We are required to inform the home club, at least on a Thursday before a Saturday match, what our sales have been to allow them time to sell those remaining.

We are still receiving requests for season tickets and these may still be obtained for the rest of the season. Prices are according to how many home matches are left, but it is worth remembering that anyone who buys a season ticket now has priority for that particular seat next season before it is offered for general sale.

Finally, a reminder that we do NOT accept telephone bookings. If you cannot make a visit to the Kenilworth Road ticket office, may we suggest you make a postal application enclosing the correct remittance and an SAE. If there is not enough time to post your ticket, it will be reserved at the ticket office once payment has been received.

# HAVE YOU EVER TASTED TIGER?

Tiger Bitter is now at Luton Town Football Club.

Tiger from Everards. A cool and satisfying way to quench a thirst.

Next time you go to the bar, ask for a Tiger.

You won't know what you've been missing until you try it.



**EVERARDS FINE BEERS.**  
**Top of the thirst division.**



# BIG NEW PAY RATES

## AT VAUXHALL'S LUTON CAR PLANT AND BEDFORD TRUCK PLANT DUNSTABLE

**SKILLED WORKERS**  
**Up to 246p PER HOUR**  
**PRODUCTION OPERATORS**  
**215½p PER HOUR**  
**GENERAL LABOURERS**  
**190½p PER HOUR**

The above rates apply to male and female applicants over 21 years of age. A slightly lower rate is paid to employees between 18 and 21 years of age.

The above vacancies all relate to a 40 hour week but a substantial increase in earnings can be achieved when working nightshift and overtime as required.

There is also scope for substantial extra earnings from our productivity plan.

Our range of benefits is better than ever and includes:

- \* 4 weeks' vacation
- \* additional one third extra on vacation pay
- \* pension scheme
- \* car purchase scheme
- \* free overalls
- \* subsidised safety footwear
- \* canteen and social club facilities
- \* accident and sickness plan

For jobs at our Luton and Dunstable Plants, call in at our Employment Offices any time between 8.30am and 4pm Monday to Friday or 8am to 12 noon Saturdays.

**LUTON: Kimpton Road, Luton.**

**Ring Luton 21122 Ext 8040**

**DUNSTABLE: Boscombe Road, Dunstable.**

**Ring Dunstable 64122**



**Vauxhall Motors Limited**

Details of all vacancies are also available from the local Jobcentre

## The Festive Spirit

By Colin Benson

Christmas comes but once a year, but for the professional game of football, things are not what they used to be. It is not so long ago that you could go and see your local idols perform on Christmas day. There was nothing like a brisk game of football to reawaken that poor misused body stuffed full of turkey and plum pud.

Of course, the traditional full League programme on the 25th and 26th December is no longer, the advent of New Year's Day becoming a Bank Holiday, has provided a better alternative for League clubs to woo in the crowds.

And football has not often let its customers down during the festive season, for over the years some of the game's highest and most bizarre scorelines have been achieved during this period.

The very first Football League game to be staged on Christmas Day was in 1889, when Preston North End beat Aston Villa 3-2 in a top of the table clash.

But the record breaking Christmas of all time was in 1963 when in a First Division match at Craven Cottage Fulham swamped Ipswich Town 10-1, while across the other side of London Blackburn Rovers swarmed to a 8-2 win at West Ham United. Up North the goal feast that day was provided by Manchester City who put paid to any aspirations Scunthorpe United might have had about goodwill to all men.

when they finished on the wrong end of an 8-1 thrashing, in a Second Division game. The incredibility of these rogue results was highlighted within two days when Ipswich turned the tables on Fulham, with a 4-2 win at Portman Road and West Ham forgot their ignominious performance at Upton Park, to beat Blackburn 3-1 at Ewood Park. Whether it is the wine or all that rich food that tips the scale towards these unusual happenings we will never know. But football at holiday time, be it Christmas, New Year or Easter has a habit of turning up something a little stranger than fiction.



NUMBER 13

**Programme  
Plus**

DESIGNED & PRODUCED BY  
SPORTS PROMOTIONS LTD.  
172-176 THE HIGHWAY, LONDON E1 9DD  
TELEPHONE 01 481 8161



**WORLD LEADER**



# Rothmans

## The greatest name in King Size



**the best tobacco money can buy**



**MIDDLE TAR** As defined in H.M. Government Tables.  
**H.M. Government Health Departments' WARNING:**  
**CIGARETTES CAN SERIOUSLY DAMAGE YOUR HEALTH**

## IT WAS A WHITE CHRISTMAS



Manager David Pleat completed a patient search for additional strength in the first team squad when he paid Bristol Rovers £175,000 for striker Steve White.

Steve signed for us after the home 3-0 victory over Charlton Athletic and is pictured with the manager and his assistant Ken Gutteridge during a light-hearted break in

negotiations.

Picture: Keith Dobney, Evening Post-Echo.

## WELCOME TO TODAY'S MATCH SPONSORS

Today's match is sponsored by Luton's leading travel agency of which Mike Watson-Challis, member of our Vice-President's Suite, is a director.

At the Travel Centre, immediately opposite Marks and Spencer, in George Street, you can be sure of good old-fashioned service plus friendly advice and unbiased information.

All the staff at the Travel Centre are fully trained and well travelled and you can benefit by their expertise when you ask them to help book your holidays.

The Travel Centre is part of the Blue Arrow Group of Companies, established 25 years ago which, as well as operating really first class travel centres, also provides jobs for all grades of employees.

All services are absolutely free to you, so whether you are thinking of securing a better job or arranging your holidays, you cannot do better than contact the Blue Arrow Travel Agency in George Street or the Staff Service in the Arndale Centre. At either office you will receive the excellent type of service that has contributed towards the success of Blue Arrow.

## TURN THE CLOCK BACK A FEW YEARS

With interest in football programme collecting at an all-time high, the big event that has become a must for collectors of all ages is the giant New Year Programme Fair.

This is the annual extravaganza which includes a fascinating exhibition of relics such as England caps, League Championship medals, shirts from famous players and

attracts visitors from all over the country and even some from overseas.

This year's Fair will be held tomorrow at the Ivanhoe Hotel, Bloomsbury Street, London WC1 (close to Tottenham Court Road underground).

Over 1,000 collectors are expected to attend to buy, sell, exchange, or

simply just view the thousands of programmes ranging from valuable pre-First World War issues up to modern items on sale for just a few pence.

The show is on from 10.30 a.m. to 4 p.m. and admission (by programme on the door) is only 40p adults — 30p children.



# OPEL IN BEDFORDSHIRE



## The New Opel Kadett. The 1300 with all the qualities of greatness.

\* New front-wheel-drive Hatchbacks, Saloons and Estates \* Choice of 16 models \* New OHC engine gives 2-star economy - 75 bhp (4-star) version also available \* Roomy, reliable and economical to run.



### Opel Ascona

A reliable good-handling family car that's fun to drive, yet thrifty on fuel - 42.2 mpg at 56 mph in Govt. tests (Ascona 1.6 S Manual). It's sensible in size and many standard features make it top value.



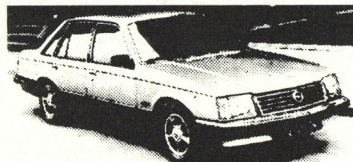
### Opel Manta Coupe and Hatch

Manta - An exciting name; an exciting car. 0-60 in 10.5 secs, top speed well over 100 mph and yet, in Govt. tests, over 42 mpg at a constant 56 mph (Manta 2.05 Manual Coupe). Choose classic Manta Coupe or versatile Manta Hatch.



### Opel Rekord

The Rekord Berlina HL - a real world beater! Soft, luxurious upholstery, cut pile carpeting, tinted glass sunroof, alloy wheels, positive, safe handling and relaxing quietness at cruising speeds.



### The Senator

With the award-winning Senator, the small circle of exclusive cars has grown a little. Automatic transmission, central locking, electric windows and much more, coupled with three-litre fuel-injected power and taut handling. Style, speed and space in one elegant package.



### The Monza

If you've got the get-up Monza's got the go! Three-litre fuel-injected performance (0-60 in 8.5 secs), superb road manners, plus a lavish specification that includes a radio/cassette player, steel sunroof, electro-magnetic boot-lock and choice of automatic or manual transmission. Very fast, very safe, very desirable.

New Opels for immediate delivery  
Competitive finance and leasing available

*Call us for the best deal around*



7 THE GREEN · HOUGHTON REGIS · DUNSTABLE

Telephone: Dunstable 62197/8

(Five minutes from junction 11, M1)



## HOUGHTON REGIS AUTO CENTRE LTD.

7 THE GREEN, EAST END, HOUGHTON REGIS

TEL: DUNSTABLE 62197/8, 604643



# RESERVE REPORT

## Tottenham 2 Luton Town 2

In this Combination fixture, the Town's reserves made the short journey to Tottenham and came away with a merited draw against a powerful and experienced side. In the first half, play was end to end and Andy Pearson gave the Town an interval lead. In the second half, Tottenham came more into the game and scored two goals in as many minutes to put them in the lead. But the Town fought back and, in the 71st minute, Herbie Smith equalised to give the Town a point. The reserves have now gone six games without defeat, four of which have been away fixtures.

**Team:** Judge, Jones, Aizlewood, Johnson, Goodyear, Harriott, Madden, Turner, Smith, Pearson, Ingram, Bunn.

## Northampton Town 1 Luton Town 2

The Town's youngsters travelled to Northampton for a Midland Youth League fixture and returned with the two points. Frankie Bunn scored the two important goals in the first half to give the Town a 2-1 interval lead. In the second half, Northampton pressed strongly but the score remained at 2-1 to give us a well deserved victory.

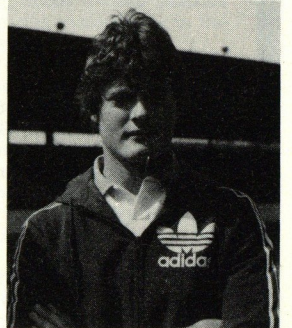
**Team:** Walker, Woodward, Murphy, Brammer, Foote, Piotrowski, Cole, Cosby, Bunn, Small, Heath, Ollis.

The Town 'A' team have had a welcome break from Wallspace League fixtures in the last two weeks. This team, made up mainly by first year apprentices, trialist and schoolboys have, as yet, mixed results. They are currently in the middle of the League table and, in the League Cup, (played in two groups of five) they are top.

In this competition, the two top teams from each group go into the semi-finals. These, and the final, will be played on a

home and away basis. The Wallspace Southern Combination was formed only at the beginning of the season. Many senior clubs found that a league did not exist for their reserve sides which would give them good class football with the minimum of travel. Reports are coming in that all the teams are delighted with the standard of football and it also gives them the backing every first team needs to be successful. The Combination also looks as if it will be a little stronger next season as several other senior clubs have already made tentative enquiries.

**KNOW YOUR YOUTH PLAYER** Today we focus Frankie Bunn who comes from the Birmingham area. He was recommended by our scout in that area and, last season, played in many youth team games. His promise in these games gave him an apprenticeship when he left school last summer. He attended Whitmore School in Solihull, playing in many representative games at school level. He also played for the North Warwick youth team. Since coming to Luton he has made good progress, scoring many goals for the reserves and youth team and looks to have a bright future at Luton Town. His biggest fans are his parents who travel from Birmingham to watch him play.



# OPEL'S NEW ARRIVAL

## Opel Kadett. test drive one today.

**The New Opel Kadett.  
The 1300 with all the  
qualities of greatness.**

\* New front wheel drive, hatchbacks, saloons and estates \* New ohc engine gives 2-star economy - 75 bhp (4-star) version also available \* Roomy, reliable and economical to run.  
**PRICES FROM £3,330**



**NORTON WAY NORTH, LETCHWORTH**  
Tel: Sales 4840/72335 Service 4850

Monday to Friday 9 am - 7 pm  
Saturday 9 am - 6 pm  
Sunday 10.30 am - 4 pm

**OPEL & HONDA**  
Main Dealers  
In Hertfordshire



## NORTON WAY MOTORS



**Today's Match is Sponsored by**  
**Luton Towns foremost**  
**TRAVEL CENTRE**



**To be sure of the RIGHT HOLIDAY  
in the RIGHT PLACE  
at the RIGHT PRICE  
go to the RIGHT TRAVEL AGENCY**

**THE TRAVEL CENTRE**  
**47 George Street**  
**Tel: LUTON 421751**  
**(right opposite Marks & Spencer)**

**THOMSON - COSMOS - HORIZON - SOVEREIGN - ENTERPRISE - O.S.L.**  
**SILVAIR - WINGS - THOS. COOK - AIR LINGUS - EXCHANGE - PEGASUS**  
**QANTAS - BRITISH AIRWAYS - BRITISH CALEDONIAN**  
**all these brochures and many more are waiting for you now.**

**HERE THIS AFTERNOON**  
**SWINDON TOWN**

Swindon Town know all about Cup fighting qualities. They are previous winners of the Football League Cup and arrive at Kenilworth Road this afternoon after knocking Arsenal out of the competition this season.

The biggest threat Swindon have offered to opposing teams this season has come from strikers Alan Mayes and Andy Rowland.

Goalscorers are popular wherever they go and Mayes has become a popular member of the Swindon side.

A Londoner by birth, he was an apprentice with Queens Park Rangers in the early seventies, but it wasn't until after joining Watford that he made his League debut in November 1974. He got one of the goals in a 3-2 win over Port Vale in Division Three, but in a struggling team that was on its way down to Division Four he met with limited success for the rest of the season. He did, however, have a useful spell on loan to Northampton that brought him four goals in mid-season.

1975-76 also saw him in and out of the team in Division Four, but then came a transformation with the arrival of Graham Taylor as manager. Alan scored steadily throughout the season and had a tally of 17 goals to his credit by the end, on several occasions being preferred to Ross Jenkins, who since then has been such a prolific scorer.

He got 16 more in 1977-78 as Watford sailed to promotion, including his first hat-trick in a 4-0 win at York in January. Last season, however, the rapid development of Luther

Blissett left Alan on the edge of the team and the chance of a regular first team place at Swindon was too good to refuse, particularly as they too were in the promotion hunt.

Alan made a sensational start with a hat-trick in his first game at Rotherham and when he shared in a 2-0 win over Watford in April it seemed both his former and his new club would be going up. Unfortunately, though he took his goal tally to 11 by the end of the season Swindon had a few disappointing results in the last few weeks and stayed down in Division Three.

His tally of over 50 goals in just over 150 games is a remarkable record for such a diminutive player who can operate on the flanks or down the centre and trouble most defenders even those who physically tower over him.

Mayes and Rowland, from Bury, have scored most of the goals so far with young defender Russell Lewis also chipping in with the first League goal of his career. Russell is likely to be on the opposite flank from new signing John Templeman (ex-Exeter and Brighton) with Billy Tucker (ex-Hereford and Bury), another new man in the centre with long-serving Kenny Stroud.

In goal Jimmy Allan has now played in over 200 League and Cup games while in midfield Brian Williams came from Queens Park Rangers last season after previous experience with Bury, Ray McHale is in his fourth season after previous

service with Chesterfield and Halifax and Roy Carter came from Hereford two years ago. Completing the likely line-up Ian Miller did well last season linking mid-field and attack after previous service with Bury, Nottingham Forest and Doncaster.

Swindon joined Division Three (South) as founder-members in 1921 and stayed there throughout its existence until 1958. Then after being allocated to the new Division Three they won promotion in both 1963 and 1969, having spells of two seasons and five seasons respectively in the Second Division.

When going up in 1969 they had also created a sensation by winning the League Cup after a thrilling win in extra time over Arsenal at Wembley. A year later they were not far off Division One when finishing in fifth place and just for good measure they also won the Anglo-Italian Cup that season.

Since being relegated in 1974 they have twice narrowly missed promotion and once just avoided relegation to Division Four for the first time in 1975-76. Last season they rose from being a useful mid-table team to promotion aspirants and in the event it was the occasional tendency to fall heavily on opponents' grounds that cost them dearly. They went down 4-1 at Walsall in September, 5-3 at Southend in March and 5-2 at Blackpool in May. Considering that they were only three points short at the end the vital nature of these games can be seen.



*Back row (left to right): Wilf Tranter (Coach), Brian Williams, Kenny Stroud, Russell Lewis, John Templeman, Jimmy Allan, Kevin Roberts, Chris Ogden, Andy Ford, Billy Tucker, Chris Kamara, Roy Carter, Bob Smith (Manager).*  
*Front row: Bryan Hamilton, Paul Gilchrist, Chic Bates, Ray McHale (Captain), Ian Miller, Alan Mayes, Andy Rowland.*



# WHITBREAD



# TROPHY BITTER

# TAXI

both home and away  
with

# ARRAN CARS

Modern Fleet of  
saloons and minibuses

# ARRAN CARS

8 Oxford Road, Luton

Telephone:

Luton 33625/412040

## AWAY TRAVEL

If this afternoon's game ends in a draw, the Bobbers Travel Club will operate coaches for the replay at Swindon. Tickets will be on sale in the Bobbers Club on Monday evening from 7.00 p.m.

The Travel Club will also run coaches for the away game at Swansea on Friday, January 18. The fare is £3 for adults and £2.50 for children. Coaches will leave Luton at 1.00 p.m. and pick up at Cranfield, Marston and Bedford 60, 50 and 40 minutes earlier respectively.

Other away trips organised by the Bobbers Travel Club are:

		Adults	Children	
9 Feb.	OLDHAM	£3.00	£2.50	9.30 a.m.
23 Feb.	SUNDERLAND	£5.00	£4.00	8.00 a.m.
8 Mar.	PRESTON	£3.50	£3.00	9.00 a.m.
22 Mar.	Q.P.R.	£1.50	£1.00	12.00 p.m.
4 Apr.	CHARLTON	£1.50	£1.00	12.00 p.m.
7 Apr.	CHELSEA	£1.50	£1.00	12.00 p.m.
19 Apr.	BIRMINGHAM	£2.50	£2.00	11.30 a.m.
3 May	NEWCASTLE	£5.00	£4.00	8.00 a.m.

## IF THERE'S A REPLAY

If today's game ends in a draw after 90 minutes, the replay will be staged at Swindon on Tuesday. Details of ticket availability and prices will be announced in the local Press.

## FACE IN THE CROWD

There's a New Year's bonus waiting for the Luton supporter ringed in this picture. It comes in the shape of a free stand ticket for the Second Division game against Leicester City at Kenilworth Road a week today. Assistant secretary Bill Butler will be waiting for you to identify yourself to him for up to 30 minutes after today's game. You'll find Bill in the Kenilworth Road ticket office after the match. Happy hunting! See you next week.



## DOWN MEMORY LANE

This week, we feature former Scottish international and Town manager, Dally Duncan.

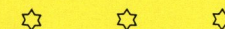
Dally had over ten years as the Town's manager, and guided the club into the First Division. It was as player coach when he joined us from Derby County in 1946 and was appointed player manager when George Martin left for Newcastle and, shortly after, hung up his boots for good to end what was a distinguished playing career, winning nine Scottish caps and was recognised as one of the best left wingers in the country.

He now lives in Brighton where he operates a guest house. But although he still follows the game, he doesn't watch it very often.



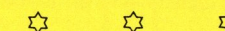
**Tricentrol**  
CHASSIS DEVELOPMENTS LTD.  
The Conversion Specialists

## 'Into the Eighties with TRICENTROL' COMPETITION



Are you aged 10-16?

Then don't miss your chance  
to accompany the Town's  
youth team on their  
international trip to  
Holland next May



Details as per our  
Chelsea programme

Final date for entries  
Monday 14th January  
at 12 noon

TRICENTROL CHASSIS DEVELOPMENTS LTD.,  
SKIMPOT ROAD, DUNSTABLE, BEDS. LU5 4JX.  
TEL. LUTON (0582) 597575. TELEX. 826998

**TELMA**







## The New Opel Kadett.

The 1300 with all the qualities of greatness.

\* New front-wheel-drive Hatchbacks, Saloons and Estates \* Choice of 16 models \* New OHC engine gives 2-star economy - 75 bhp (4-star) version also available \* Roomy, reliable and economical to run. Prices from £3350

INTERNATIONAL CARS  
78 BEDFORD ROAD  
KEMPSTON  
BEDFORD MK45 5JY

Opel Kadett.  
test drive one today.

## TOWN CLASSIFIEDS

**TAXI TO TAKE YOU TO AND FROM THE MATCH**  
Contact 'A' Cars situated next door to the ground in Kenilworth Road.  
**TEL: 'A' CARS ON LUTON 410000.**

### AWAY TRAVEL

Why not join the Bobbers' Travel Club?  
For more information Telephone Jenny Russell on Luton 423916, or come and see us in the Bobbers' Club on Wednesday nights between 7.30 - 9.30 p.m.

### ALUMINIUM WINDOWS

We make and install our own finest quality aluminium replacement windows, doors and patio doors.  
Competitive prices. Personal attention from your local firm:  
W. H. ALLSOP & SONS, 153 NEWTOWN STREET, LUTON. Tel: Luton 20011 or evenings 424650/23472.

You can get your message in Town Classifieds for only 10p per word, £1 minimum payment.  
Send details with payment to Mike Beevor, Luton Town FC, Kenilworth Road, Luton.

# FACTS AND FIGURES

DIVISION TWO HOT SHOTS (including League Cup)	
ALLEN, Q.P.R.	19
ROBSON, Sunderland	13
MOSS, Luton Town	17
BILEY, Cambridge	12
SHOULDER, Newcastle	17
DAVIES, Fulham	11
CROSS, West Ham	14
HATTON, Luton Town	11

COMBINATION APPEARANCES & GOALSCORERS 1979-80	
App	Gls
Aizlewood	11
Birchall	4
Bunn	5(3)
Cox	3
Cosby	—(2)
Fearon	2
Goodyear	19
Harriott	18(2)
Heale	1
Hill	7(3)
Ingram	14
Johnson	20
Jones	22
Madden	16(1)
Ollis	15
Pearson	18
Sisman	8
Small	14(1)
Smith	7
Turner	19
Woodward	1

DIV. 2 APPEARANCES & GOALSCORERS 1979-80

	App	FA FLC	Gls
Aizlewood	1(2)	2	1
Birchall	1(1)	—	—
Donaghy	24	2	1
Findlay	23	2	—
Greash	24	2	—
Hatton	23	2	11
Hill	24	2	4
Ingram	1	—	17
Moss	24	2	—
Price	24	2	—
Saxby	23	2	3
Stein	24	2	5
Stephens	24	2	1
Turner W.	2	—	—
West	22	—	1
White	—(1)	—	—

*Figures in brackets denotes substitute*

*Up to and incl. 1st Jan. 1980*

FOOTBALL COMBINATION						
	P	W	D	L	F	A Pts
Chelsea	24	17	3	4	45	37
Arsenal	23	16	2	5	56	35
Tottenham	24	14	6	4	57	34
Norwich City	22	14	4	4	42	32
Q.P.R.	21	12	3	6	50	41
Fulham	23	12	3	8	40	27
Southampton	23	10	6	7	40	35
Leicester City	26	11	2	13	41	24
Bristol City	21	10	3	8	46	38
Bristol Rovers	23	8	7	8	37	23
Oxford United	22	6	8	34	28	21
<b>Luton Town</b>	<b>22</b>	<b>6</b>	<b>9</b>	<b>7</b>	<b>23</b>	<b>30</b>
Birmingham	21	8	5	8	30	32
Crystal Palace	22	7	6	9	37	30
Ipswich Town	21	6	7	8	31	29
West Ham Utd	21	6	5	10	30	39
Cardiff City	22	7	3	12	29	40
Orient	23	5	5	13	27	29
Swindon Town	21	5	4	12	25	44
Hereford Utd.	21	4	5	12	30	48
Plymouth	21	4	4	13	38	59
Reading	21	4	2	15	26	74

LEAGUE DIVISION TWO TABLE 1979-80														
	Home						Away						Gls	
	P	W	D	L	F	A	P	W	D	L	F	A	Pts	Diff
Newcastle Utd.	24	11	1	0	24	8	2	6	4	15	16	33	+15	
<b>Luton Town</b>	<b>24</b>	<b>5</b>	<b>6</b>	<b>1</b>	<b>24</b>	<b>12</b>	<b>6</b>	<b>3</b>	<b>3</b>	<b>19</b>	<b>15</b>	<b>31</b>	<b>+16</b>	
Chelsea	24	8	1	2	18	7	6	2	5	22	21	31	+12	
Leicester City	24	7	4	2	22	13	4	4	3	18	14	30	+13	
Birmingham	23	8	2	2	17	9	4	3	4	14	14	29	+8	
Sunderland	24	10	2	0	27	9	1	3	8	7	20	27	+5	
Wrexham	24	9	1	2	18	6	3	2	7	12	19	27	+5	
West Ham	22	8	1	2	18	7	4	1	6	11	15	26	+7	
Q.P.R.	23	7	3	1	30	10	3	2	7	12	19	25	+13	
Swansea	24	9	0	4	21	12	1	4	6	5	20	24	+6	
Preston	24	4	7	1	19	14	2	4	6	11	14	23	+2	
Orient	23	5	4	3	18	24	2	5	4	10	12	23	+8	
Notts County	24	4	6	3	20	15	3	2	6	12	15	22	+2	
Cardiff City	24	6	2	3	11	9	2	3	8	11	22	21	+9	
Cambridge Utd.	24	4	4	3	20	13	1	6	6	11	20	20	+2	
Shrewsbury	24	7	3	2	23	11	0	5	11	9	23	19	+2	
Oldham Athletic	22	6	2	3	13	9	0	5	6	9	17	19	+4	
Watford	23	5	4	3	13	10	1	3	7	5	15	19	+7	
Burnley	24	4	4	4	14	14	1	4	14	28	18	+15		
Bristol Rovers	23	5	4	2	20	13	1	1	10	12	28	17	+9	
Charlton	23	5	4	2	16	14	0	3	9	5	26	17	+19	
Fulham	22	3	2	6	11	17	3	1	7	12	23	15	+17	

LEAGUE DIVISION TWO FIXTURES 1979-80	
Aug. 11	Gillingham (LC 1, 1L)
18	Gillingham (LC 1, 2L)
25	Bristol Rovers
Sept. 1	Leicester City
8	Swansea City
15	Notts County
22	Oldham Athletic
29	Cardiff City
Oct. 6	Cardiff City
13	Bristol Rovers
20	West Ham United
27	Preston North End
Nov. 3	Cambridge United
10	Queens Park Rangers
17	Burnley
24	Birmingham City (FAC 1)
Dec. 1	Shrewsbury Town
8	Newcastle United
15	Wrexham (FAC 2)
22	Charlton Athletic
29	Watford
Jan. 5	Chelsea
12	Swindon/Torquay (FA 3)
19	Birmingham City
26	F.A. Cup 4
Feb. 2	Notts County
9	Oldham Athletic
16	Fulham (FAC 5)
23	Sunderland
Mar. 1	West Ham United
8	Preston North End (FAC 6)
14	Cardiff City
15	League Cup Final
22	Queens Park Rangers
29	Burnley
April 4	Charlton Athletic
5	Watford
7	Chelsea
12	Shrewsbury T. (FAC SF)
19	Birmingham City
26	Wrexham
May 3	Newcastle United
10	F.A. Cup Final

FOOTBALL COMBINATION FIXTURES 1979-80	
Aug. 20	Swindon Town
25	Bristol City
27	Southampton
Sept. 1	Reading
8	Fulham
15	Crystal Palace
22	Bristol Rovers
27	Swansea Utd.
Oct. 29	Norwich City
13	Swindon Town
20	Queens Park R.
27	Hereford Utd.
Nov. 3	Southampton
10	Leicester City
17	Oxford United
24	Ipswich Town
Dec. 1	Chelsea
8	Queens Park Rangers
15	Cardiff City
22	Birmingham City
29	Tottenham H.
Jan. 5	Bristol City
12	Bristol Rovers
19	Fulham
26	Crystal Palace
Feb. 2	Arsenal
9	Swansea Utd.
16	Birmingham City
23	Leicester City
30	Norwich City
Mar. 6	Ipswich Town
13	Oxford United
20	Tottenham H.
27	Hereford Utd.
Apr. 3	Chelsea
10	Wrexham
17	Cardiff City

MIDLAND YOUTH TABLE	
W.B.A.	9
Birmingham	11
Luton Town	11
Swindon City	7
Derby County	10
Bristol City	11
Wolves	11
Leicester City	11
Northampton	10

© Copyright of The Football League Ltd. Home fixtures in Bold Name in Bold = Scorer 1 Figure = Number of Goals + Denotes substituted player \* Own Goal

### MATCH BALL SPONSORS



Today's Match Ball is sponsored by:

### THE STEWARDS OF THE KENILWORTH COMPLEX

George Anderson · Don Bardon · Paul Bardon · Stewart Beck · Jim Begley · George Barrett · Reg Clark · Bob Clark · Roy Skelton · Frank Sumner · Bill Sutton · Mike Williams · Tony Williams · Geoff Wilson · Steve Wilson · Roy Wright.

### HALF TIME SCORECHECK

Altrincham v Orient	Mansfield v Brighton
Birmingham v Southampton	Newcastle v Chester
Blackburn v Fulham	Notts County v Wolves
Bristol City v Derby County	Oldham v Coventry
Burnley v Stoke City	Preston v Ipswich
Cardiff City v Arsenal	Q.P.R. v Watford
Everton v Aldershot	Reading v Colchester
Leeds v Nott'm Forest	Sunderland v Bolton
Leicester v Harlow	Swansea v Crystal Palace
Liverpool v Grimsby	Tottenham v Manchester Utd.
	Halifax v Manchester City





# THE TEAMS



LUTON TOWN		SWINDON TOWN	
JOHN FINDLAY	1	JIMMY ALLEN	
KIRK STEPHENS	2	RUSSELL LEWIS	
MAL DONAGHY	3	KENNY STROUD	
TONY GREALISH	4	ROY McHALE	
MIKE SAXBY	5	BILLY TUCKER	
PAUL PRICE	6	ROY CARTER	
RICKY HILL	7	IAN MILLER	
ALAN WEST	8	CHRIS KAMARA	
BRIAN STEIN	9	ANDY ROWLAND	
BOB HATTON	10	ALAN MAYES	
DAVID MOSS	11	BRIAN WILLIAMS	
	12		

**WHERE TEAM SPIRIT COUNTS AND  
OUR CUSTOMERS ALWAYS WIN**

**IT PAYS TO CONSULT THE EXPERTS**



**C.P. HYDRAULICS  
(OVERSEAS) LTD.**

**UNIT 4, PARK STREET INDUSTRIAL ESTATE,  
OSIER WAY, AYLESBURY, BUCKS.**

**Telephone: Aylesbury (0296) 81032/81033**

Suppliers of: Just about every type of hose (rubber and plastic) including industrial hoses, fittings, couplings etc. — Hose assemblies made to order — over £1 million of stock available for immediate delivery anywhere in the U.K.



**OFFICIAL**

**14**

**TOKEN**

## MATCH OFFICIALS

Referee:  
C. DOWNEY, Hounslow  
Linesmen:  
K. BARRETT, Coventry  
E. YOUNG, Warley

**OUR NEXT HOME GAME . . .  
LEAGUE DIVISION TWO**

**Saturday 12th January, 1980**

**LEICESTER CITY**

Kick-off 3.00 p.m.

*Tickets available from the Ticket Office*