

☆ **GILLINGHAM v LUTON** ☆
KICK-OFF 3.00p.m. SATURDAY AUGUST 11th 1979



GILLINGHAM

FOOTBALL CLUB MATCHDAY MAGAZINE
30p

FOOTBALL LEAGUE CUP 1st ROUND 1st LEG



SPONSOR A PLAYER

PLAYER	TRACK SUIT £25	BOOTS £25	SHIRT £7.50	SHORTS £4.00	SOCKS £4.00
MICK ADAMS	Bell & Shepherd Limited				
GARY ARMSTRONG	Bell & Shepherd Limited				
MICK BARKER	Bell & Shepherd Limited				Nigel Holland
TONY BOTTIGLIERI	Bell & Shepherd Limited				
STEVE BRUCE	Bell & Shepherd Limited	Thames Polytechnic	Thames Polytechnic	Thames Polytechnic	Thames Polytechnic
JOHN CRABBE	Bell & Shepherd Limited				
NIGEL DONN	Bell & Shepherd Limited				
STEVE DUDLEY	Bell & Shepherd Limited				
COLIN FORD	Bell & Shepherd Limited				
TONY FUNNELL	Bell & Shepherd Limited		Mr. & Mrs. M. Pepper	Julian Pepper	Joy Wood
RON HILLYARD	Bell & Shepherd Limited		Miss J Arnot		
BILLY HUGHES	Bell & Shepherd Limited		Nigel Holland	Jenny Jones	Jenny Jones
TERRY JOLLEY	Bell & Shepherd Limited				Mr. & Mrs. M. Pepper
GRAHAM KNIGHT	Bell & Shepherd Limited				
TERRY NICHOLL	Bell & Shepherd Limited		Medway Primary Schools F.A.	Medway Primary Schools F.A.	Medway Primary Schools F.A.
JOHN OVERTON	Bell & Shepherd Limited		Vince Watkins & Theresa Rider		Paul Bridgewater
KEN PRICE	Bell & Shepherd Limited		Adrian Pepper	Robert Arnot	Alan Wood
DAMIEN RICHARDSON	Bell & Shepherd Limited				
JOHN SHARPE	Bell & Shepherd Limited			Paul Bridgewater	Anthony Ward
GARY SUTTON	Bell & Shepherd Limited				
PAT WALKER	Bell & Shepherd Limited				
NIGEL WAKELIN	Bell & Shepherd Limited				
MARK WEATHERLY	Bell & Shepherd Limited		Paul Bridgewater	Vince Watkins & Theresa Rider	Mr. & Mrs. M. Pepper
DANNY WESTWOOD	Bell & Shepherd Limited		Vince Watkins & Theresa Rider	Rupert Smith	Derek Wood
STEVE WHEATLEY	Bell & Shepherd Limited	Thames Polytechnic			
DEAN WHITE	Bell & Shepherd Limited				
CHARLIE YOUNG	Bell & Shepherd Limited				
DAVID YOUNG	Bell & Shepherd Limited		Halling Minors Football Club	Halling Minors Football Club	Halling Minors Football Club

Imagine how much closer to the Football Club you would feel if you could tell your friends that Danny Westwood scored the winning goal with boots you bought him or that Mark Weatherly trains in a track suit you provided. We are looking for supporters and local firms who would be interested in sponsoring a 'Gills' player. All sponsors will be given publicity in our Matchday Magazine.

For details and application forms, send name and address to:
The Secretary,
GILLINGHAM FOOTBALL CLUB LTD.,
Priestfield Stadium,
GILLINGHAM, Kent.

GILLINGHAM FOOTBALL CLUB



eleven players to win things.

There are always injuries, loss of form and suspensions. It is also pleasing to have Charlie Young fit again after his serious injury and also Graham Knight, who is battling to regain fitness. Both will be welcome additions to our first team squad.

You can also see how much has been going on at the ground, not only with one of the best playing pitches in England, but we're also trying to develop a

Gerry Summers

Column

DIRECTORS

Dr C S Grossmark (Chairman)

C A L Cox (Vice-Chairman)

J W Leech

B B Moore

Manager: G Summers

Asst. Manager: A. Hodgkinson

Medical Officer:

Dr C S Grossmark

Secretary: R J Dennison

Chief Scout: J Short

PRIESTFIELD STADIUM

GILLINGHAM: KENT

TEL: MEDWAY 51854

Magazine designed & produced by:

SPORTOPIA Promotions Ltd.

172 - 176 The Highway

London E1 9DD

Programme Editor:

Andy Bradley

Printed by:

The Pan Litho Ltd.

The pre-season period is always important, not only to get players fit but to get the team functioning. Getting the right pre-season matches is often difficult. This season, we went to Haarlem and Volendam Football Clubs and for that short stay, training and playing in Haarlem was indeed very beneficial.

I have also got our most experienced player, Danny Richardson, out of the side at the moment but his form in training and particularly in the Spurs match, must have made it clear to my other three strikers that they have got to be on their toes to keep him out.

Without this healthy competition, a side cannot go forward. Players have got to accept that they are as good as their last match and obviously, a manager has to have more than

stadium as quickly as possible, but obviously, it's going to take time and a lot of money.

So back to today's very attractive League Cup match with Luton. We have no real record in this competition at all. In fact, our Cup achievements, both in the F.A. and Football League in the time that I've been here have left a lot to be desired. I think, we can start this first League Cup match with a bit of a boost, because obviously to play a side with Luton's reputation and to come out on top, we will have to be at our best.

So let's be hearing you fans, your encouragement can be worth a goal.

"Come on, you blues".

our visitors today

LUTON TOWN

It is nearly nine years since we last entertained Luton in a League Cup tie at Priestfield. On that occasion the Bedfordshire side won by the only goal. Just over a year later, they found themselves £300,000 in the red and perilously close to bankruptcy.

In their desire to reach the First Division, large amounts of money were spent on improving facilities at Kenilworth Road. The Division One goal was eventually reached, but the fans deserted them and it was only the selling of stars like Malcolm MacDonald and Chris Nicholl that saved the crisis. No one can accuse the club of lack of ambition and we wish them well in the future.

Luton's team this afternoon will be selected from:—

Jake Findlay (Goalkeeper). Born Blairgowrie. Began his career with Aston Villa and made his League debut in August 1974. Signed for Luton last December in a £100,000 deal.

Kirk Stephens (Defender). Born Coventry. Cost a £5,000 fee to Southern League side Nuneaton Borough in July, 1978. Originally a right winger, he was previously on the books as a school boy with Coventry.

Mark Aizlewood (Defender). Born Newport. Signed from Newport in April 1978 where he made his League debut in March 1976 whilst still an apprentice.

Mick Saxby (Defender). Born Mansfield. Cost a club record fee over a month ago. Joined Mansfield straight from school and made his League debut for them in February 1976 when he also scored the winning goal.

Paul Price (Defender). Born St. Albans. Now has over 100 League appearances for Luton since making his League debut in February 1976. Started off as a full back, but has made the move to central defence with great success.

Mal Donaghy (Defender). Born Northern Ireland. Equally at home in midfield, he was signed last summer from Irish League side Larne for £15,000. A Northern Ireland U/21 International.

Pasquale Fuccillo (Midfield). Born Bedford. Known to 'Lil' to his team mates, he is of Italian parents. Now fully recovered from the broken leg he sustained last season when he also made his 100th League appearance.

Ricky Hill (Midfield). Born London. Former England Youth International, he joined Luton as an apprentice four years ago. Made his League debut in the final game of the 1975-76 season.

Tony Grealish (Midfield). A Londoner, born Paddington, yet and Eire International. Signed Apprentice Professional forms for Orient in July 1972; full professional in July 1974.

Alan Birchenall (Midfield). Born East Ham. Began his career with Sheffield United and went on to serve Chelsea, Crystal Palace, Leicester City, Notts County and Blackburn before joining Luton last March. Has made over 400 League appearances for his various clubs.

Dave Moss (Forward). Born Witney. Cost a then club record fee of £120,000 to Swindon Town in June 1978. Top scorer last season with 13 goals, he was spotted playing for his local club and signed as a professional for Swindon in 1969.

Bob Hatton (Forward). Born Hull. Cost £50,000 to Blackpool during the summer of 1978. Top scorer in the Second Division for season 1977-78 with 22 goals, yet Blackpool were relegated! Previously with Wolves, Bolton, Northampton, Carlisle and Birmingham.

Brian Stein (Forward). Born South Africa. Spotted playing for Athenian League side, Edgware, during the Autumn of 1977. Made his full League debut the following December.

Godfrey Ingram (Forward). Born Luton. On the verge of a regular first team spot, he has been top scorer in the reserves for the past three seasons.

Roger Triggs

LUTON TOWN

Formed: 1885.

Nickname: The 'Hatters'.

Ground: Kenilworth Road.

Record Attendance: 30,069 v Blackpool (F.A. Cup) 1958-59.

Record Receipts: £16,100 v Chelsea (Div. 1) 1974-75.

Record Victory: 12-0 v Bristol Rovers (Div. 3 South) 1935-36.

Record Defeat: 1-9 v Swindon Town (Div. 3 South) 1920-21.

Record Transfer Fee Paid: £200,000 to Mansfield Town for Mick Saxby, July, 1979.

Record Transfer Fee Received: £350,000 from Manchester City for Paul Futcher, June, 1978.

Record Goalscorer: Joe Payne with 55 goals in season 1936-37.

Honours:

Second Division Runners-Up: 1954-55, 1973-74

Third Division Runners-Up: 1969-70

Fourth Division Champions: 1967-68

Third Division (South) Champions: 1936-37

Third Division (South) Runners-Up: 1935-36

F.A. Cup Runners-up: 1959

		Gillingham/Luton League Record:					
		P	W	D	L	F	A Pts
At Priestfield	20	8	6	6	25	19	22
At Kenilworth Road	20	3	4	13	21	61	10
	40	11	10	19	46	80	32

Manager: David Pleat took over from Harry Haslam who went to Sheffield United, in January, 1978. Former Luton player, he made 67 League appearances for

them during the mid-sixties. Later was boss of Southern League Nuneaton Borough before returning to Kenilworth Road as coach.

THE FOOTBALL ASSOCIATION NOTICE TO SPECTATORS

Every club is responsible to the Council for the action of its spectators and is required to take all reasonable precautions to prevent spectators throwing missiles on to the pitch and/or

threatening or assaulting officials and players before, during or at the conclusion of matches.

In the case of breach of this rule, any spectator may be removed from any ground and such force used as may be necessary for the purpose of effecting such removal.

The club has been ordered to exhibit this notice because of incidents at a recent match. Spectators are warned that a repetition of misconduct may result in the closing of the ground.

E A Croker
Secretary

DIRECTORS MESSAGE

The directors are extremely concerned by the two unsavoury incidents which have occurred at Priestfield Stadium in the last 18 months.

It must be made perfectly clear that we cannot afford any repetition of such events in the future or the ground will be closed by the Football Association Disciplinary Committee.

We have satisfied the authorities that we did take reasonable precautions to ensure the referee's safety but, obviously, they were not sufficient and the reckless action of one individual means that we are now required to fence in some parts of the ground. Apart from the considerable — expense which otherwise would have been unnecessary — those fences are unsightly, will impair the view from some places and may spoil your enjoyment of the game.

We feel certain that the person involved in the most recent incident now regrets his rash action.

Whatever the apparent provocation, there can be no excuse for an attack on a match official whose safety must be assured and whose authority must be respected at all times.

Dr C S Grossmark
Chairman

ANVIL PLANT HIRE



HIRE Cement mixers, vibrating plater and rollers, pumps, road breakers, generators, welders, etc.

HIRE Access Towers, extension ladders, trestles, roof ladders, scaffold boards, arrow props, tarpaulins, staging, etc.

HIRE Steam carpet shampoos, wallpaper strippers, tile cutters, rough cast machines, dust sheets, kango's, angle grinders, etc.

HIRE Floor Sanders, circular saws, drills, wallchases, Disc cutters, jigsaws, routers, brick cutters, cartridge guns, etc.

HIRE Pressure washers, floor scrubbers, floor polishers, vacuum cleaners, etc.

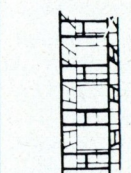
HIRE Chainsaws, hedge trimmers, rotavators, grass cutters, flame guns, rollers, brush cutters, etc.

HIRE Pipe threading machines, pipe vices, drain rods, benders, cutters, stocks & dies, blow lamps, etc.

HIRE Gas heaters, space heaters, dehumidifiers, electric & gas floodlights, etc.

HIRE Car tools, engine crane, ramps, roof racks, trolley jacks, socket sets, etc.

We Stock A.E.G. Power tools
HILTI Drills, guns and accessories
SHELL Propane & butane gas



For our fully comprehensive brochure, call in or telephone ANVIL PLANT HIRE, 358 Canterbury St., Gillingham, Medway SE14 2JL

Division 3 Round-up

A new season begins

The summer breaks between football seasons seems to be getting shorter than ever and because of the severe winter 1978-79 seemed to go on forever. Last season saw **Shrewsbury** finish as Champions thus surprising many 'Soccer Experts' who claimed that they would eventually fall apart during the crucial run-in. **Watford**, who finished just one point behind, were the team that lead the Division nearly all season and had seem so certain of their second successive Championship having won Division Four the previous year. **Swansea City**, who had finished third to **Watford** in 1977-78 also completed a 'double' as they too gained promotion for the second successive season.

Transfers

The transfer-market during the close season has seen a lot of activity with Division Three clubs having to pay larger and larger fees. Newly-promoted **Barnsley** have bought Wolves' goalkeeper Gary Pierce for £40,000. Mansfield, who narrowly avoided relegation last season have paid £75,000 for **Luton** striker Steve Taylor. **Exeter City**'s talented midfielder Colin Randell joined near-neighbours **Plymouth Argyle** for a fee of £60,000. **Sheffield United**, who already have Argentinian Alex Sabella on their books have scooped up yet another in the shape of 27-year-old striker Pedro Verde (capped four times by Argentina) from hard-up Spanish First Division side Hercules of Alicante - and for free! **Southend United** have purchased two strikers - Mick Tuohy (£15,000 from Redditch) and Terry Gray (£30,000 from Huddersfield).

David Garth



match report

Dartford 1, Gillingham 3
Friendly - Tuesday 24th July
John Crabbe celebrated his return to active duty with the first of Gillingham's three goals against their Southern League hosts.

Ken Price headed Gills further in front from a Nicholl freekick in the 52nd minute and six minutes later Tony Funnell added another with a rasping volley from a Danny Westwood centre.

Former Gillingham reserve player Glenn Coupland pulled one back for the Darts in the 63rd minute.

Dartford 0, Gillingham 5
Friendly - Thursday 26th July
Two days after the first team had won comfortably at Watling Street, the reserves achieved an even bigger success against Dartford's second string.

Haarlem 1, Gillingham 1
Friendly - Friday 27th July
Gills got off to a great start to their first ever match in Holland with a goal after just three minutes.

Danny Westwood had a shot blocked from Terry Nicholl's corner and Dean White netted the rebound.

Gremer equalized 18 minutes later but the Dutch club were fortunate to stay on level terms as Ken Price headed a Westwood corner against a post and on the stroke of halftime Tony Funnell had a goalbound attempt blocked on the line.

Volendam 2, Gillingham 1
Friendly - Sunday 29th July
A goal down after six minutes, Danny Westwood delighted the intrepid small band of Gillingham supporters by levelling in the 25th minute.

Intercepting a shaky back pass, Westwood went round the

goalkeeper before slipping the ball into the net.

Volendam regained the lead after 13 minutes of the second half and held it to the end although John Overton and Westwood, again, both went close to netting a second equalizer.

Herne Bay 0, Gillingham 2
Friendly - Saturday 28th July
The Youth team warmed up for the new campaign with a comfortable win over their counterparts from the coastal resort.

Newcomer Nigel Poynton, celebrated his debut by registering both goals.

Herne Bay 0, Gillingham 3
Friendly - Tuesday 31st July
The reserves followed up the Youth team's success at Winch's Field with a convincing victory over the Kent League club.

Gillingham 1, Tottenham 1
Friendly - Thursday 2nd August
Terry Jolley had only been on the field a few minutes, but it was he who scored a fine equalizer and gave Gills the satisfaction of a draw against the First Division club.

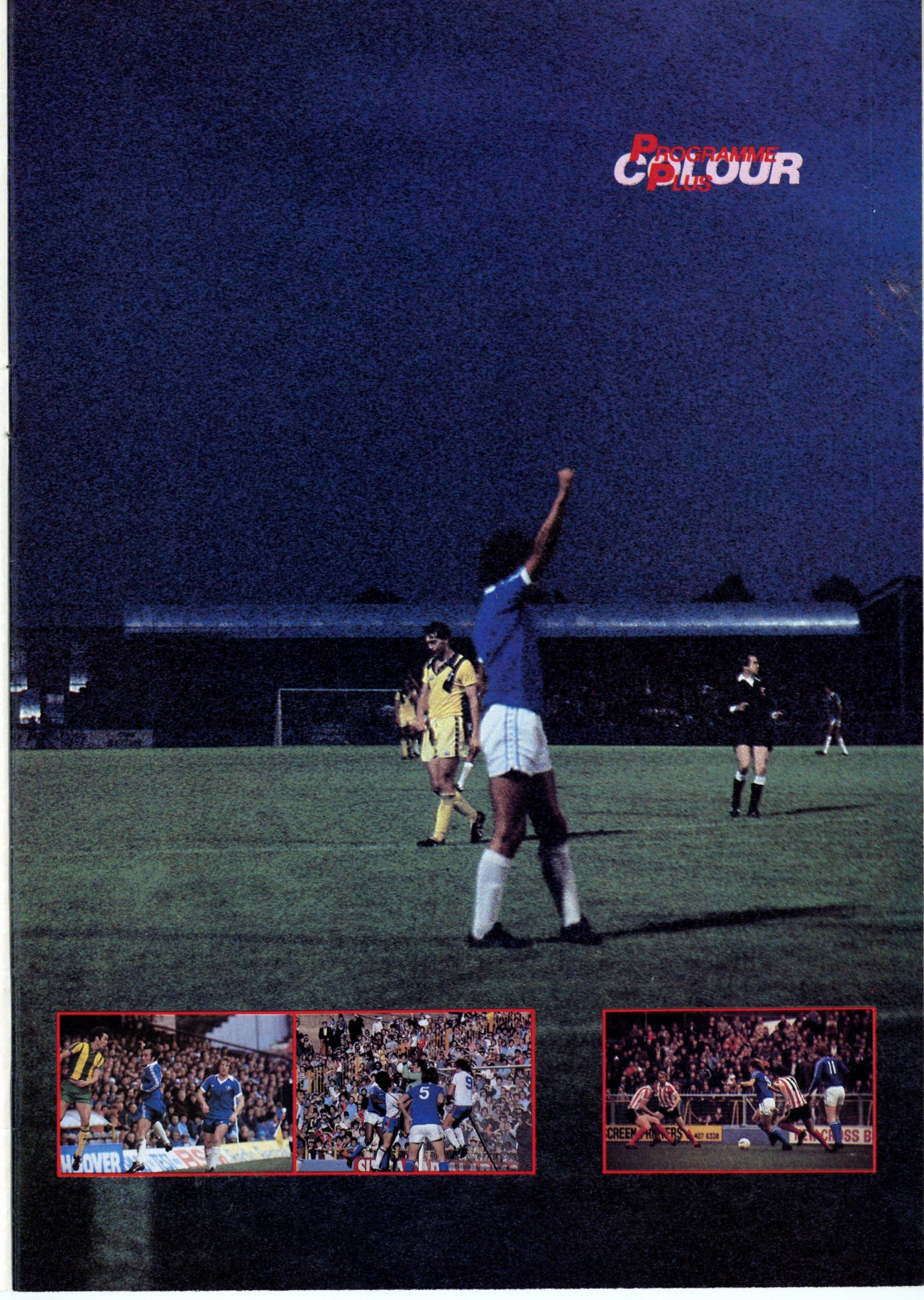
Micky Barker ran on to Damien Richardson's 86th minute pass and crossed for Jolley to head back into the opposite corner.

Twice in opening stages Gillingham went close to taking the lead, first from a left foot special by Ken Price and then from a Richardson rocket that hit a post.

However, Spurs survived that spell, gained control and went in front after five minutes of the second half through Glen Hoddle. He fended off two challenges before planting a low drive wide of Ron Hillyard.

Later, Hillyard and then his successor, Steve Wheatley, both made brilliant saves to keep out shots from Ricardo Villa.

PROGRAMME
COLOUR
PLUS



KING SIZE



The Original
is the finest.

World proven Quality



Enjoy
the 'A' original

KING SIZE
59^{*}p

*Special price on packs marked special price.

MIDDLE TAR Manufacturer's estimate
H.M. Government Health Departments' WARNING:
CIGARETTES CAN SERIOUSLY DAMAGE YOUR HEALTH



club scene



Social Club

Good afternoon, have you visited the Social Club yet? If you are thirsty and would like a cool refreshing drink, just drop in and you will be made welcome as a guest for the day. We are open from midday until 2.30 pm and after the game at 5 pm - 11 pm.

Membership. It is to your advantage to join because members get priority over all guests especially on matchdays when the club is nearing capacity and strict entry guidelines are enforced. Unfortunately, our membership runs from January to December, so if you join up today, the membership will only be valid until 30th December of this year. The subscription for this period is still £1.25 but would probably still be cheaper than paying the guest charge everytime you visit the club.

The club opening hours have not changed from what they were last year. They are as follows:

Sunday	12 noon - 2 pm 7 pm - 10.30 pm 10.30 pm - 11 pm
Monday to Saturday	7 pm - 11 pm
The opening hours differ on Matchdays and they are as follows:	
Midweek	5.30 pm - 7 pm 9.15 pm - 11 pm

THE RAINHAM END SHOP was replaced during the Summer and is more spacious and modern.

MASCOT TODAY is seven years old Paul Norman of Bredhurst Road, Wigmore. Favourite player is Damien Richardson. Enjoys reading and swimming.

WITH THE GILLS. It's always good to see teams from the two higher Divisions at Priestfield. Let's see if we can reproduce the atmosphere of the final games of last season and help our team to even better things this term. "INTO THE '80's - INTO DIVISION TWO!". Good Cup runs would be a nice change as well.

THE BLUES SUPPORTERS ASSOCIATION will again be creating and stimulating interest in the Club and a prime requirement is to build up a healthy membership of supporters who share the aim of wanting to help the Gills.

MEMBERSHIP. Fees are unchanged this season at 35p for Adults and 25p for under-14's and Senior Citizens. This includes Insurance in case of injury at any football match in Great Britain and whilst travelling by train for any Gills home or away game. £12.00 per week if temporarily disabled and off work, with a £2,000 lump sum due to death or loss of an eye. These figures are for the age group 15 - 70 with reduced rates for 12 - 14. Full details on application. Members can also buy souvenirs and programmes at 10% off. Join at the Sales Shops, which are situated at the Town and Rainham Ends on the Gordon Road side and in the Main Stand.

• • •

Entertainment. Tonight we are honoured to have the company of "Keycol Legacy", a very versatile Duo and Cabaret, starting at 8pm.

Future dates to remember:

Saturday 18th August	Gary Jenson Disco 8pm - 11pm
Sunday 26th August	Flour Graders 8pm - 10.30pm
Saturday 1st September	Tim Imp Disco 8pm - 11pm

Travel News

For the fifth successive season Gills Travel Club hope to arrange transport to every Gillingham away game.

Although the members required for full membership have already been reached, there are usually vacancies on board available to non-members for games in mid-week. If you are interested in travelling to the evening games, then give Dave Taylor a ring on Medway 51261.

Arrangements for both Luton (on Tuesday) and Blackpool (next Saturday) have also been made through the Social Club. Depending on support, a coach, or coaches, will be organised for every game.

Intending travellers should enquire at the Social Club or, if more convenient, telephone Medway 51385 for full details.

To Luton

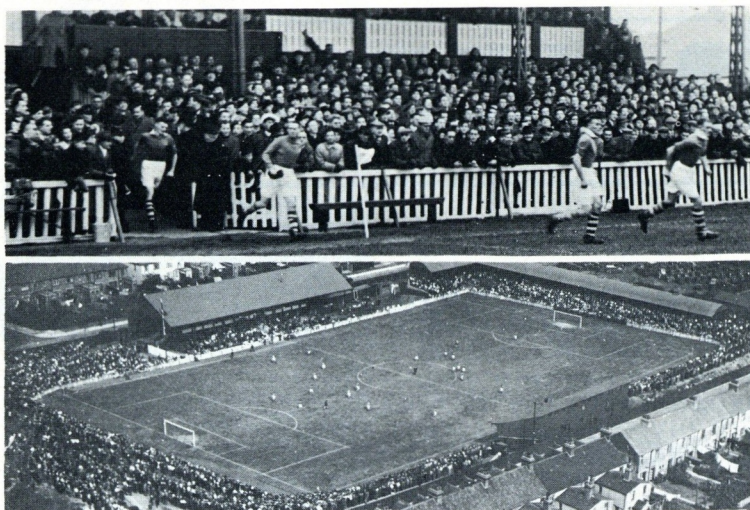
Tuesday 14 August

The RAC recommended route for motorists is by the A2 to London and then M1 to intersection 10. Take the A6 (north-bound) into Luton (London Road becoming Castle Street). Turn left at the large roundabout into Chapel Viaduct, a dual carriageway which continues into Dunstable Road. The ground will be found on the left shortly after going under the railway bridge.

Approximate distance: 81 miles.

Suggested route across London:

Through Dartford tunnel and left on to the A13. After six miles, turn right on to the A112 and then left on to the A12 four miles later. Fork right on to the A406 after 3½ miles. The A406 (North Circular) joins the M1 at Brent Cross after 17 miles.



Scrapbook

The first in an occasional series which revives highlights of the Club's history

Where were you when these pictures were taken? You might have been in the crowd but unless you are over 30 years old, you wouldn't even have been born because the photographs date back to 1947 and capture the start of another Cup run for Gills.

The Southern League championship flag hangs limply above the Main Stand as Gills prepare to take on Leyton Orient in the F.A. Cup.

As a non-league team, Gills frequently enjoyed lengthy excursions in the Cup and season 1947-48 was no exception.

Having already disposed of Barnet in the fourth qualifying round - a Hughie Russell hat-trick saw to that - Gillingham were drawn against Orient in the first round proper.

As can be seen from the picture the ground is filling up nicely and, in fact, 15,561 people passed through the turnstiles that day to see Gills record a famous 1-0 success over the Third Division club.

Rochdale away in the second round was a poor reward for such a splendid achievement. However, after drawing 1-1 in Lancashire, Gills continued their

giantkilling exploits with a marvellous victory in the replay.

A bumper crowd - 17,078 - witnessed a 3-0 win thanks to goals from George Forrester, Tug Wilson and Jackie Briggs.

What happened in the third round is well-known and an important landmark in the Club's history as the record attendance of 23,002, paying then record receipts of £2,000, packed the ground for the visit of Queens Park Rangers.

Could Gills reach the fourth round for the first time ever? Sadly, the answer was 'no'. But it was close, very close. In fact, even extra time couldn't separate the two teams who fought out a 1-1 draw.

Although beaten 3-1 in the replay, Gillingham were not disgraced. Indeed, within the space of two months the Club's reputation had increased tremendously and quite possibly it was this Cup run, accompanied by generous national publicity, which helped Gillingham regain Football League status when the old Third Divisions were enlarged from 22 to 24 clubs in 1950.

Now study the aerial view of the Stadium (notice the tremendous slope on the pitch which wasn't levelled until 1955) and count the many other ground improvements which occurred in the last 30 years.

☆ ☆ ☆ ☆ ☆ ☆ Fund Raising

Welcome once again to Priestfield Stadium at the start of a new season, a season we all hope will be more successful than the last one.

We, at the Commercial Office must start by saying 'thank you' to all our Agents and members who have continued to sell or buy our various tickets throughout the summer.

The Gills' Instant Lotteries continue to flourish and today, you can see how some of the money you helped raise has been used with new seating, tea bar and sales shop in the Main Stand, a new roof at the Rainham End and the new office block which is under construction in Redfern Avenue.

We all realise that so much still needs doing at the Stadium but with your continued support we are sure that any necessary improvements can be looked at in the future with the knowledge that cash to finance them will be available.

We are now able to accept more agents for all three of our competitions:-

1. Gills' Instant Lottery Tickets (25p)
2. Make Money with Gillingham tickets (10p)
3. Invicta Bingo Tickets (10p)

We pay 10% commission on gross sales and organise collection and delivery with everything being done on a sale-or-return basis. For more details, without obligation, contact Denis Prowse or Dave Pomeroy at 12a High Street, Gillingham or Telephone: Medway 51462 (office), Medway 369302 (evenings).



Back row, left-right: Colin Ford, Gary Armstrong, Ron Hillyard, John Short (Chief Scout), Steve Wheatley, Graham Knight, Steve Dudley.

Centre row, left-right: Alan Hodgkinson (Assistant Manager), Dean White, John Overton, Micky Barker, Mark Weatherly, Charlie Young, John Sharpe, Steve Bruce, Billy Hughes, Bill Collins (Youth Team Manager).

Front row, left-right: Pat Walker, Terry Nicholl, Damien Richardson, Tony Funnell, Gerry Summers (Manager), Ken Price, Danny Westwood, John Crabbe, Terry Jolley.

relax chaps



matchfacts

GOALSCORERS

DATE OPPONENTS F A GATE

DATE	OPPONENTS	F	A	GATE
Aug 11	Luton (LC1)	H		
Aug 14	Luton (LC1)	A		
Aug 18	Blackpool	A		
Aug 21	Southend	H		
Aug 25	Millwall	H		
Aug 29	LC2			
Sept 1	Reading	A		
Sept 5	LC2			
Sept 8	Carlisle	A		
Sept 15	Chester	H		
Sept 18	Wimbledon	H		
Sept 22	Hull	A		
Sept 26	LC3			
Sept 29	Exeter	H		
Oct 2	Wimbledon	A		
Oct 6	Blackburn	A		
Oct 8	Southend	A		
Oct 13	Barnsley	A		
Oct 20	Grimsby	H		
Oct 23	Oxford	H		
Oct 27	Mansfield	A		
Nov 3	Blackpool	H		
Nov 7	Oxford	A		
Nov 10	Sheffield United	A		
Nov 17	Bury	A		
Nov 24	FAC1	H		
Dec 1	Swindon	H		
Dec 8	Rotherham	A		
Dec 15	FAC2	H		
Dec 21	Chesterfield	A		
Dec 26	Colchester	A		
Dec 29	Millwall	A		
1980 Jan 1	Sheffield Wed	H		
Jan 5	Brentford	A		
Jan 12	Reading	H		
Jan 19	Carlisle	A		
Jan 26	Plymouth	A		
Feb 2	Chester	A		
Feb 9	Hull	A		
Feb 16	Exeter	A		
Feb 23	Barnsley	H		
Mar 1	Grimsby	A		
Mar 8	Mansfield	A		
Mar 14	Blackburn	A		
Mar 22	Sheffield Utd	A		
Mar 29	Bury	A		
Apr 1	Chesterfield	A		
Apr 5	Colchester	A		
Apr 7	Sheffield Wed	H		
Apr 12	Brentford	A		
Apr 19	Swindon	A		
Apr 26	Rotherham	A		
May 3	Plymouth	H		

FINAL TABLES

P	W	D	L	F	A	Pts
Shrewsbury	46	21	19	6	61	41
Watford	46	24	12	10	83	52
Swansea	46	24	12	10	83	61
Gillingham	46	21	17	8	65	42
Swindon	46	25	7	14	74	52
Carlisle	46	15	22	9	53	42
Colchester	46	17	17	12	60	55
Hull	46	17	15	14	61	56
Exeter	46	19	9	18	53	49
Brentford	46	19	9	18	53	49
Oxford	46	14	18	14	44	50
Blackpool	46	18	9	19	61	59
Southend	46	15	15	16	51	49
Sheffield Wed	46	15	14	17	53	53
Plymouth	46	15	14	17	67	68
Chester	46	14	16	16	57	61
Rotherham	46	17	10	19	49	55
Mansfield	46	12	19	15	51	52
Bury	46	11	20	15	59	65
Chesterfield	46	13	14	21	56	65
Peterborough	46	11	14	21	44	63
Walsall	46	10	12	24	56	71
Tranmere	46	6	16	24	45	78
Lincoln	46	7	11	28	28	41

P	W	D	L	F	A	Pts
Peterborough	22	13	6	3	37	21
Southend	22	13	5	4	45	20
Brighton	22	13	4	5	42	26
Charlton	22	7	9	6	33	23
Watford	22	8	6	8	30	29
Northampton	22	9	3	10	36	30
Wimbledon	22	9	2	11	29	42
Cambridge	22	8	7	9	27	41
Brentford	22	8	7	9	27	41
Gillingham	22	8	6	10	23	41
Millwall	22	5	6	12	27	33
Portsmouth	22	7	1	14	30	51

APPEARANCES 1978-79

Div 3	FLC	FAC
Armstrong	24(2)	1
Barker	22	—
Buttress	—(1)	—
Crabbe	34	2
Funnell	12	2
Hillyard	46	2
Hughes	38(2)	2
Hunt	—	—
Jolley	9(4)	1
Knight	3	—
Nicholl	43	1
Overton	43	2
Price	41(1)	2
Richardson	28	2
Sharpe	37	2
Walker	4(6)	—
Weatherly	46	2
Westwood	43(2)	2
White	26(1)	—
Williams	1	—
Young	6	—

SOUTH EAST COUNTIES LEAGUE

P	W	D	L	F	A	Pts
Tottenham	30	19	6	5	80	45
Ipswich	30	17	6	7	66	38
Millwall	30	15	7	8	51	38
Arsenal	30	15	6	9	49	32
Portsmouth	30	15	5	10	52	35
Gillingham	30	15	4	11	54	41
C. Palace	30	14	5	11	58	54
West Ham	30	11	7	12	52	51
Chelsea	30	14	4	12	65	59
Orient	30	12	3	15	42	49
Charlton	30	11	3	16	54	48
Watford	30	8	6	16	30	42
Norwich	30	9	3	18	48	62
Southend	30	9	3	18	48	68
QPR	30	9	3	18	44	68
Fulham	30	7	6	17	35	54

* Points deducted

YOUTH TEAM

Aug 18	QPR	H
Aug 25	Southend	A
Sept 1	Millwall	A
Sept 8	Charlton	A
Sept 15	Tottenham	H
Sept 22	Fulham (LC1)	A
Sept 29	Watford	H
Oct 6	Norwich	H
Oct 13	West Ham	A
Oct 20	Chelsea	H
Oct 27	LC 2	
Nov 3	Charlton	H
Nov 10	Tottenham	A
Nov 17	Crystal Palace	H
Nov 24	Millwall	H
Dec 1	Arsenal	H
Dec 8	Portsmouth	A
Dec 15	Fulham	H
Dec 29	Watford	A
Jan 5	Chelsea	A
Jan 19	Portsmouth	H
Jan 26	Arsenal	A
Feb 2	Crystal Palace	A
Feb 9	Orient	H
Feb 23	Southend	H
Mar 1	Norwich	A
Mar 8	Fulham	A
Mar 15	Ipswich	H
Mar 29	Orient	A
Apr 12	West Ham	H
Apr 19	QPR	A
Apr 26	Ipswich	A

RESERVES

Sept 5	Portsmouth	H
Sept 11	Aldershot	A
Sept 19	Brighton	H
Sept 25	Northampton	A
Oct 2	Southend	A
Oct 10	Charlton	H
Oct 30	Wimbledon	A
Oct 31	Millwall	H
Nov 7	Northampton	H
Nov 13	Charlton	A
Nov 19	Peterborough	A
Dec 5	Peterborough	H
Dec 11	Brentford	A
Dec 18	Brighton	A
Jan 2	Southend (Cup)	H
Jan 9	Watford	A
Jan 16	Portsmouth	A
Jan 23	Wimbledon	H
Jan 30	Aldershot	H
Feb 13	Southend	H
Feb 27	Brentford	H
Mar 12	Watford	H
Mar 18	Millwall	A
Apr 2	Cambridge	H
Apr 8	Cambridge	A



Steve Bruce passes on a few tips to Tony Funnell at the end of a training session.

TEL. SITTINGBOURNE 76400/78844

**BEARSTED
TOOL SUPPLIES
LTD.**

**Distributors of Tools &
Fasteners
Engineers Merchants**

**UNIT 25
SITTINGBOURNE
INDUSTRIAL PARK
CROWN QUAY LANE
SITTINGBOURNE
KENT.**

TEAMS

GILLINGHAM v

LUTON

RON HILLYARD

JOHN SHARPE

MICK BARKER

JOHN OVERTON

MARK WEATHERLY

JOHN CRABBE

TERRY NICHOLL

STEVE BRUCE

KEN PRICE

DANNY WESTWOOD

DAMIEN RICHARDSON

1
2
3
4
5
6
7
8
9
10
11
12

JOHN FINDLAY

GRAHAM JONES

MARK AIZLEWOOD

ROBERT JOHNSON

MICHAEL SAXBY

PAUL PRICE

RICKY HILL

MAL DONAGHY

GARRY HEALE

BOB HATTON

DAVID MOSS



MATCH BALL

Donated by
N.R. BRAY
Greenacres Norton Lane
Lynsted Sittingbourne

OFFICIALS

Referee: GILBERT NAPTHINE (Loughborough). Began refereeing in 1959 and progressed through the Football Combination to the Football League list in 1971. An assistant engineer, he is also chairman of the Football Combination Referee's Association.
Linesmen: L A Bartels/red flag
E N Bray / yellow flag

NEXT HOME GAMES

MILLWALL F.C.
Division 3
Saturday 25th August
KO 3.00pm



MANPOWER

WORK CONTRACTORS TO INDUSTRY AND COMMERCE.

CONTACT YOUR MAIDSTONE BRANCH TODAY
FOR WORK INCLUDING:
WAREHOUSE, SECRETARIAL, FITTING, FACTORY
PRODUCTION, MAINTENANCE, SWITCHBOARD
OPERATING, TYPING, ETC.

5a, GABRIELS HILL, MAIDSTONE.
TEL: 59148.