

LEEDS UNITED

OFFICIAL MATCH DAY PROGRAMME PRICE 20p No. 12

FOOTBALL LEAGUE CUP ROUND 5 WEDNESDAY 13th DECEMBER, 1978

LUTON TOWN



In This Issue . . .

The League Cup



Why it's now a Major
Trophy by Jimmy
Adamson.

Tony Currie forecasts
the semi-finalists.

Our Cup Visitors
from Luton.

Plus all your regular
features and up to
date United News
and Views.

SMC



WOVEN STRIPED SHIRT

£5.95

3-PIECE FLANNEL SUIT

£45.00

FASHION SHOES from

£14.95

Unit 39
Kirkgate Arndale Centre
Bradford
Telephone: Bradford 31142
6 Burtons Arcade
Briggate
Leeds
Telephone: Leeds 33096



The ball boys at Elland Road
are sponsored by

SHELL U.K. OIL

Call in and see the complete range of
Shell Leisure Wear
at the following Shell Garages:

Grandstand Filling Station
Elland Road, Leeds
Kirkstall Garage, Kirkstall Road, Leeds
Red Roofs Garage, Ring Road
Horsforth, Leeds
United Filling Station
Dewsbury Road, Leeds
Roydsbeck Filling Station, Ring Road
Lower Wortley, Leeds
Marlborough Garage
Carlisle Road, Bradford



JIMMY ADAMSON



**"We treat every
team with the
same balance
of respect and
fear and realise
how important
and difficult
tonight's game
will be."**

The Football League Cup has now become established as one of our major competitions, a change from when the League Cup was started back in the early 'sixties. Then, many clubs did not even take part and a number of others regarded it as something of a hindrance.

The two factors that probably did more than anything else to give the League Cup the status it now has were the decisions to play the Final at Wembley and make winning the competition a qualification for Europe. Now the League Cup is a prestige tournament and it has probably even more significance for us this season because of the ruling that will affect us when the third round of the F.A. Cup comes along in a month's time.

We must play all our ties away from Elland Road and as we approach the half-way stage of the League season we still have some ground to make up before we can consider getting into Europe next season through our League position. So tonight's game with Luton has additional importance for all of us at Elland Road.

After the match on Saturday I was asked how I compared the game in the First Division with the Second Division. Over the course of a 42-match season there is a considerable difference in the standards but in a one-off situation like tonight, the gap is far smaller.

One of my most embarrassing moments in the game was when non-league Wimbledon came to Burnley, then in the First Division, and beat us in the F.A. Cup. As I recall they also caused Leeds some problems that season and our visitors tonight upset the form book by winning at Aston Villa in the last round.

Results like this show that there's no such thing as an easy Cup tie and while we do not fear Luton, we will certainly give them our full respect tonight.

Bristol City's Joe Royle was quoted after Saturday's match as saying we underestimated City. This was not the case. We treat every team with the same balance of respect and fear and all the United players realise how important, and difficult tonight's game will be.



LEEDS UNITED AFC
Elland Road
Leeds LS11 0ES
Tel: Leeds 716037
Information Service:
Leeds 702621/5

President:

The Rt. Hon. The Earl of Harewood
Chairman: Manny Cussins

Directors:

Rayner Barker, M.C.I.T., M.B.I.M.,
Jack Marjason,
R. Brian Roberts, J.P., F.I.O.B.,
Robert R. Roberts,
Sidney G. Simon,
Brian Woodward

Team Manager: Jimmy Adamson

Assistant Manager: Maurice Lindley

General Manager/Secretary:
Keith Archer

Commercial Manager: Mike Lockwood



Manny Cussins
Chairman



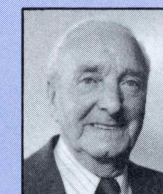
Rayner Barker



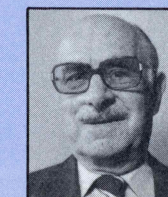
Jack Marjason



R. Brian Roberts



Robert R. Roberts



Sidney G. Simon



Brian Woodward

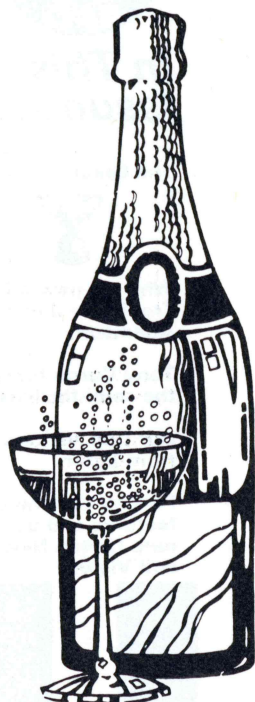
Leeds United Match Day Programme
Published by Leeds United A.F.C.

Edited by Bob Baldwin

Printed by Hemmings, Ireton Avenue,
Leicester

Designed by Bernard Gallagher

Cover Man . . . Our Welsh international
defender Byron Stevenson is tonight's
Cover Man, pictured in action against
Spurs this season.



LEONARDS

Where the Best Costs Less

Haig	£4.19	Martell	£6.09
Highland Mist	£3.79	Smirnoff	£4.09
Gordons Gin	£4.19	Advocaat	£3.09
White Satin Gin	£3.99	Martini Dry	£1.39
Lambs Rum	£4.55	Harvey's Bristol Cream	£1.95
Bicardi	£4.86	Sandemans Port	£2.05

82 OSMONDTHORPE LANE, LEEDS 9. TEL: 495139

81 HALL LANE, LEEDS 12. TEL: 638968

8.30 to 6.00 Mon, Tues, Sat 8.30 to 8.00 Wed, Thurs, Fri

ELLAND ROAD

SANTA CURRIE!

United skipper Tony Currie acted as Father Christmas recently when he presented a colour television set to an eight year old United supporter who suffers from a rare and painful skin disease.

Stephen Crookes of Ackworth near Pontefract, will probably never be able to

... A moment eight year old Stephen Crookes will never forget as United skipper Tony Currie presents him with a colour television set.



come to Elland Road and watch his favourite team in action because of the disease. But he is an avid follower of United on television and Tony is his favourite player.

When Tony was asked to go along and hand over the television set to Stephen — bought with money raised by neighbours and friends and help from the Tandberg Company in Leeds, the United skipper was only too delighted to help.

And one evening recently, Tony paid a surprise visit to see Stephen and present him with the colour T.V. "Just meeting Tony Currie was something Stephen will never forget," one of the organisers

explained. "We are extremely grateful to everyone concerned. In addition to the help from Tandberg, Vallances at Castleford have promised to provide free service and repairs whenever needed."

This Christmas will certainly be one that young Stephen will remember for a long time.

BRIEF ENCOUNTER

All good stories should have a happy ending and that's certainly the case with this one. United supporter Andrew Bowen from Warrington, Cheshire, was returning home

by train after the game against Arsenal last month when he started talking to a girl who had also been to the United match.

"She was travelling back to Holywell, North Wales, and I found out that she was a member of the United Fan Club," explained Mr. Bowen. But then the pair went their separate ways and Mr. Bowen wrote to us asking if we could find the name and address of the girl.

After checking through the Fan Club membership records we were able to supply Mr. Bowen with the name and address of his travelling companion and recently we received another letter from Mr. Bowen telling us that he had made contact.

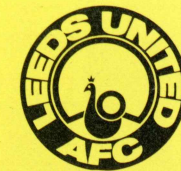
"The help you gave me was like the rest of the Elland Road set up, first class," he added.

CHANGE OF PLAN

Leeds to Ipswich via Blackpool may not be the most direct route but United paid a brief trip to the Lancashire resort recently when the team was forced to make alternative travel arrangements for the match at Ipswich.

Originally the plan was to fly to East Anglia from Yeadon. But with the threat of fog locally it was decided to fly from Blackpool where conditions were clear. So the team set off for East Anglia by heading west on a coach to Blackpool and then flying on to Suffolk, if you see what we mean!

ROUND-UP



A CUP OMEN!



EDDIE GRAY TESTIMONIAL YEAR 78-79

Last week the Mexborough and Morecambe branches of the United Supporters' Club held functions for Eddie Gray's Testimonial and there are events planned for: December 14th — Concert at the Fernleigh Hotel. December 17th — Walsall Supporters' Club. January 8th — The Kop Committee Disco and Dance at Tiffany's, Leeds.

Tickets, 50p, available from the Supporters' Club secretary Eric Carlile, 59 Appleton Court, York Road, Leeds 9, please enclose cheque/postal order and s.a.e. or ring Mr. Beeton, Leeds 869755.

January 18th — Harrogate Supporters' Club, Drovers Arms.

January 31st — Concert at the Ravensthorpe Liberal Club.

February 13th — Stainforth, Doncaster, Supporters' Club.

February 14th — Compton Arms Supporters' Club.

February 19th — Quiz at the Otley Supporters' Club.

March 6th — Quiz at the Horsforth Supporters' Club.

If you are a United fan who believes in omens then the signs point to Leeds getting to the final of the League Cup at Wembley in March.

For the only other time United and Luton Town have met in the League Cup was back in the 1967-68 season. United won the second round game at Elland Road 3-1 and went on to win the Cup by beating Arsenal 1-0 at Wembley.

Luton though can look back on a better result on their most recent visit to Elland Road. That was in the 1974-75 season when they came here for a League game on September 7th and drew 1-1, Allan Clarke scoring for United with Barry Butlin replying for Luton.

In this season's League Cup, United have got to the fifth round with wins against West Bromwich Albion 1-0 at Maine Road, Manchester, in a second replay after the sides twice drew 0-0 at the Hawthorns and Elland Road, Sheffield United 4-1 in the third round at Bramall Lane and 2-0 at Queens Park Rangers in the fourth round.

Luton Town won through to the fifth round by disposing of Wigan Athletic 2-0 at Kenilworth Road in round two, Crewe Alexandra 2-1 in the third round, again in front of their own supporters and then a fine 2-0 away win against Aston Villa in the last round.

This is the furthest stage Luton have reached in the League Cup but they did go all the way to Wembley in the 1959 F.A. Cup before losing 2-1 to Nottingham Forest. Apart from winning the trophy ten years ago, United reached the semi-finals last season when we went out to the eventual winners Nottingham Forest.

BACK AGAIN

Kevin McNally, our referee for tonight's League Cup quarter-final against Luton Town, was last at Elland Road a couple of months ago for our League match against West Bromwich Albion.

Mr. McNally from South Wirral in Cheshire has been on the League list for six years and was on the line for an F.A. Cup semi-final in the 1973-74 season (Burnley-

Newcastle) and a European Cup Winners Cup match in Malta in 1969.

He has been refereeing since he was at school and handled games in local Cheshire leagues before his promotion to the League list.

Mr. McNally runs his own tobacconist and newsagents business and is a married man with three children. He is a keen gardener and plays squash regularly.

DECEMBER BIRTHDAYS

Three United players celebrate birthdays this month. Goalkeeper John Lukic's special day was on Monday, December 11th, Peter Lorimer celebrates tomorrow, December 14th and reserve defender Bobby Skilling has a birthday coming up on Saturday, December 21st.

THE BRITISH PROGRAMME CLUB

182 Beverley Road, Hessle, Hull, North Humberside
Telephone 0482-648690

The British Programme Club act as Leeds United's official programme agents. They handle sales of past issues. If you require any copies write to them, enclosing 25p for each copy required (post paid).

VISITING SUPPORTERS please note... send a small s.a.e. for details of your own club's issues. With three million items in stock, the British Programme Club will be able to help you.

PROGRAMME COLLECTING BOOKS... Programmes and their Prices—£3.25 (post paid), Programme Collectors Handbook—£2 (post paid), both available from the B.P.C.C.

If you have any clean, old programmes these can be turned into cash by return.

SPECIAL OFFER for readers of this programme... 50 programmes—all different, various seasons mainly from the 1970s, good assortment of clubs, no rubbish. Usual price £6-£7, our special price £3 post free. All available from the B.P.C.C.

Slazenger Ball Sponsor



TONIGHT'S MATCH BALL IS SPONSORED BY

WADDESDON TRANSPORT LTD.
76 High Street
Waddesdon, Bucks.

Telephone: 029665-228

Road Transport Specialists



GOLDEN GOAL

There is £120 to be won at every match in our Golden Goal competition and you will find your number in the panel on the back page. This is your goal time in seconds, with 5,400 seconds in a game. If your number corresponds with the time of the first goal you win £25—and £5 if it is the time of the last goal. There are a possible eight big winners and every goal between first and last will win £2.

No goal times are printed between 1 and 9 seconds and 2,701 and

2,709 seconds—the start of the second half. If a goal is scored in these periods, the programme holder with 10 seconds or 2,710 seconds is the winner. If the game ends in a goalless draw, the programme holder with 0000 will win £30 and if only one goal is scored, the winner will receive £30. All prize money will be paid out on goals scored up to the end of an abandoned game including a goalless draw. Winning times will be announced at half time or the end of the game and winners should claim their prizes after the match from the Pools Office or no later than mid-day on Monday. The goal time decision of the Official Timekeeper is final and no dispute of the time can be entered into.

The competition is timed using watches supplied by Owen and Robinson Ltd. of Albion Street, Leeds 1.

MICROWAVE OVENS

Our Group has over 6,000 Microwave ovens in pubs and clubs throughout the country

FOR COMMERCIAL OR
DOMESTIC MODELS
CONTACT
THE SPECIALISTS

THE MICROWAVE OVEN CENTRE
210 KEIGHLEY ROAD, BRADFORD 9

BRADFORD 44299

ERIC BAILEY

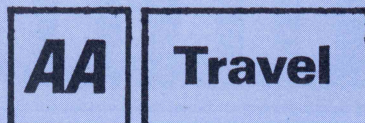
SCRAP METAL MERCHANT

* **PLANT AND MACHINERY
DISMANTLERS**

* **FERROUS AND NON-FERROUS
METAL PROCESSORS**

71A TOWN STREET
STANNINGLEY, LEEDS

TELEPHONE: 572032



SERVICES LIMITED

THE POWER TO ORGANISE
GREAT HOLIDAYS
BY LAND SEA OR AIR

**95 THE HEADROW
LEEDS 1**

TELEPHONE: 35679

Metropole
a cut
above
the rest!

Cast your eye over a succulent joint of roast beef or the roast of the day with all the trimmings.

Watch our chef carve it the way you want it. Have as much as you like or come back for more. Or choose from the cold joint.

This is the Carving Table at the Metropole in Leeds. A choice of five starters plus a delicious array of sweets or cheese with coffee.

A 3-course meal for only £3.85.

No extras — service and VAT included — children under 14 half price.

Bring the family on a Sunday luncheon or any time you just feel hungry.

The Carving Table

Hotel Metropole,
King Street, Leeds.
Tel: (0532) 450841.

FAN FORUM

DROP US A LINE

Welsh supporter Berian Harris of 10 Almond Avenue, Ty-Sign, Risca, Newport, Gwent, has written a special poem about the team which he wants us to publish in tonight's programme "in the hope that it will bring United luck and help them into the semi-finals of the League Cup."

We're happy to oblige and here's Mr. Harris' A-Z of Leeds United:

"A is for accuracy which John Hawley has got

B is for brilliant that's Lorimer with a cracking hot shot

C is for Currie our captain so brave

D is David who pulls off a great save

E is for Eddie, the first of the Grays

F is for Frank, anywhere he plays

G is for Graham, our skilful left wing

H is for Harris, another crafty thing

I is for in-goal where David will be

J is for Jimmy our manager is he

K is for keeper David Harvey so great

L is for Leeds who always attract a good gate

M is for Madeley who's always alive

N is for Neil Firm our reserve number five

O is for oranges they eat at half time in each game

P is Paul Hart from Blackpool he came

Q is for queues which we've always got

R is for Ray, always ready with a shot

S is for Stevenson, Byron his first name

T is for Trevor who always plays the game

U is for unique which Leeds will stay

V is for victory every Saturday

W is for win, two points we make

X is for X-rays which Tony Currie had to take

Y is for yellow our colour away

and Z means the end so I'll say good day."

Send your letters for publication in the United programme to: United Programme, Leeds United, Elland Road, Leeds 11.

TOP FAN

Tonight's United Top Fan, Mr. A. Maloney, pictured, has good reason to remember our recent home game against Southampton. Mr. Maloney's wife gave birth to their first son and



it was only natural that this staunch United supporter should name his boy after the scorer of United's first goal against the Saints, Arthur Graham.

According to Mr. Maloney, Arthur Graham Maloney, now two and a half weeks old is getting on fine. "If the child had been a girl we were going to call her Cherry Maloney, after Trevor Cherry," Mr. Maloney explained.

Mr. Maloney lives at 343 South Boulevard, Hessle Road, Hull, and has been supporting Leeds for the last eight years. "Along with my father and brother-in-law, I travel to all matches, at home and away. In fact I cannot recall a week-end when we have not been watching United because on the rare occasions when we cannot watch the first team, we watch the reserves in action."

If you think that you qualify as a United Top Fan, please let us have all the details together with a recent black and white photograph. Send your letters to: United Programme, Leeds United, Elland Road, Leeds 11.

PEN PALS

Caroline Miller is a keen United supporter living in Northern Ireland who would like a male pen pal, aged between 18 and 25 who also follows United and watches matches regularly at Elland Road.

Caroline's address is: 33 Ballymacrea Road, Portrush, Co. Antrim, N. Ireland, and anyone interested in corresponding with her should write to this address. Caroline promises that she will try to answer every letter she receives.

NAME THE PLAYER



JOHN HAWLEY FRANK GRAY

Our last two mystery players pictured in the recent Chelsea and Southampton match programmes did not cause any great problem for the majority of United supporters who sent in entries.

Most of you recognised John Hawley in the Chelsea programme and Frank Gray as our mystery man in the Southampton programme. The first correct entries drawn out were sent in by Anthony Johnson, 42 Preston Way, Monk Bretton, Barnsley (John Hawley) and Donald Wilson, 5 Sandhill Way, Bilton, Harrogate, (Frank Gray).

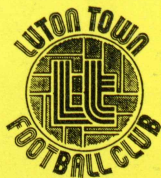
Both were our guests at Saturday's game against Bristol City.

We'll have another mystery player for you to identify in the match programme for the Middlesborough game at Elland Road on Saturday week, December 23rd.

A HAPPY CHRISTMAS

We will be closing our appeal for toys to hand out as Christmas presents to needy children in the Leeds area at the Middlesborough match on December 23rd. If you have any unwanted items, in good condition and suitable for children up to twelve years of age, please call in with them at the Pools Office at the ground.

Our collection of toys is building up into one of the largest we have ever received and we will be co-operating with the Leeds Council for Voluntary Service to see that all the toys you have contributed go to a good home.



LUTON

Tonight's fifth round League Cup tie sees our visitors from the Second Division breaking new ground in the competition. This is the first time Luton have progressed further than round four and the club had only once reached that stage, back in 1963.

So there's plenty at stake for our visitors this evening as their young manager David Pleat acknowledges. Soon after the quarter-final Draw was made and Luton knew they would be making a trip to Elland Road tonight, Town's manager emphasised: "We have every respect for Leeds but we would rather play them than a club from a lower Division. At least there will be no complacency. We know the size of the task facing us but we have a big incentive to do well. This is the first time we have reached the last eight and we are excited at being so close to the semi-finals.

"Leeds are a quality side but so are Aston Villa and we played really well against them in the last round."

Town did so well at Villa Park in the fourth round that they produced one of the shock results in this season's competition in winning 2-0 with second half goals from their two leading strikers, **Bob Hatton** and **Brian Stein**.

In fact that win against Villa was Luton's first away win of the season and to date Town's performances in the League have been inconsistent — some good home wins with plenty of goals but a patchy run away from Kenilworth Road.

Manager Pleat and his Luton side on duty tonight will be largely an unknown quantity for the majority of United followers. It is only four seasons since Luton under manager Harry Haslam spent a brief nine months back in the First Division but the team has radically changed since their last visit to Leeds.

David Pleat had three seasons as a player with Luton after winning England youth honours while with Nottingham Forest. Injuries put a premature end to a promising career and Pleat

eventually turned to coaching and after to management with Nuneaton in the Southern League.

He was appointed to take charge of Luton's Reserve side in 1975 and after promotion to first team coach, David Pleat stepped in to the manager's shoes when Harry Haslam moved on to Sheffield United. At 33 he was one of the youngest managers in the League but he made an immediate impact by embarking on a wholesale re-building plan at Kenilworth Road.

Last season Town slipped to within a point of the relegation Zone and Luton's young manager again rung the changes. His transfer turnover approached £900,00 and in eight months, four players left Kenilworth Road and nine new men were signed.

Luton's most recent signing was goalkeeper **Jake Findlay**, a Scot who made fourteen first team appearances for Aston Villa. He will be challenging two other experienced 'keepers for the number one role at Kenilworth Road including **Milija Aleksic**, a former part-timer with Stafford Rangers who Town bought from Plymouth in January 1977. He's known to the Kenilworth Road fans as 'Elastic'.

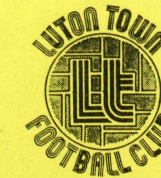
Earlier this season, Luton took former Bradford and Huddersfield 'keeper **David Lawson** from Everton so competition for the goalkeeper's position at Luton will be fierce.

Bob Hatton is one of the most experienced scorers in the League game. Born at Hull he began with Wolves and has been a consistent scorer throughout a career that has taken him to Bolton, Northampton, Carlisle, Birmingham and Blackpool where he scored 22 League goals last season before joining Luton in the summer for £50,000.

His partner up front is South African Brian Stein, well up in the list of Second Division scorers this season. He made his League debut last Boxing Day against Crystal Palace and is now rated one of the best young prospects in the Second Division.



TOWN



David Moss is another experienced front runner in the Town attack. He was a record £110,000 buy from Swindon during the summer and was leading scorer for the Wiltshire club last season with sixteen goals.

Youth international **Ricky Hill** is another of the younger Luton set who has been causing quite a lot of attention this season. He joined the Kenilworth Road club from schoolboy football in London and was in Town's League side as a 17 year old.

United manager Jimmy Adamson knows all about **Alan West's** talents in midfield. The two knew each other at Burnley where West won England Under-23 honours before signing for Luton in October 1973 for £100,000. He is now coming up to two hundred League appearances for Town.

Pasquale Fuccillo, the son of Italian parents and known as 'Lil', joined the club as an apprentice in 1973 and broke through into the League side three years later.

Luton's defence is built around centre half **Chris Turner**, a £95,000 buy from Peterborough United where he spent nine seasons building up a reputation as one of the best defenders outside the First Division. **Mark Aizlewood**, moved from Newport County in April and although mainly a defender he can also operate in midfield and another recent newcomer to Kenilworth Road is **Mal Donaghy**, a Northern Ireland Under-21 international signed from Larne last summer.

Town's longest-serving player is full back **Paul Price** who has spent seven years with the club and twice recovered from breaking a leg. **David Carr** took over the left back role last season when Steve Buckley moved to Derby County and **Graham Jones**, a Northerner from Manchester, has shown his versatility by playing at centre half and also in midfield for the Second Division club.

Of the other Town players likely to be on duty tonight, **Steve Sherlock** is a former Manchester City junior who used to understudy for Willie Donachie at Maine Road, **Terry Hayes** is an Irish Under-21 cap and striker **Gary Heale** scored on his debut against Charlton last season and was twice on target in the League Cup second replay against Manchester City last season when Luton went down 3-2.

Luton Town Facts at a Glance

The club was formed in 1885, turned professional in 1890 and joined the League's Second Division in 1897.

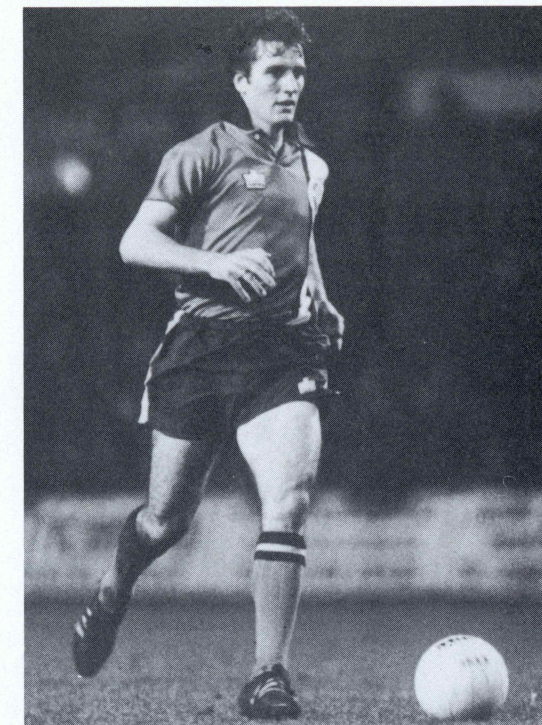
Town spent five seasons in the First Division in the late 1950's and reached Wembley in 1959 losing 2-1 to Nottingham Forest in the F.A. Cup Final. They again reached the First Division in 1974-75 but were relegated after one season.

Bob Morton played 494 games for Town, a club record, between 1948 and 1964. Gordon Turner holds the club's scoring record, 243 goals between 1949 and 1964. Joe Payne scored 55 goals for Town in the 1936-37 season including ten in one game against Bristol Rovers.

Back row, left to right: Godfrey Ingram, Kirk Stephens, Brian Stein, David Moss, David Carr, Steve Sherlock.

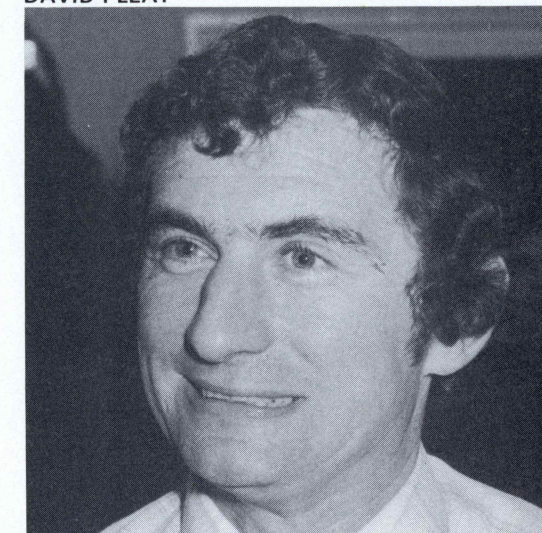
Middle row: Mark Aizlewood, Jim McNichol, Graham Jones, Milija Aleksic, Chris Turner, Paul Price, Mal Donaghy.

Front row: Ken Guttridge (*Assistant Manager*), Pasquale Fuccillo, Alan West, Bob Hatton, David Pleat (*Manager*), Ricky Hill, Phil Boersma (*now Swansea*), R. Johnson (*Physio*).



PASQUALE FUCCILLO

DAVID PLEAT



LEAGUE CUP ACTION

Q.P.R. 0
UNITED 2

Ray Hankin gets in a header with United skipper Tony Currie in support.

Action from United's Fourth Round win at Loftus Road

Tony Currie, Ray Hankin and Frank Gray anxiously wait for the corner to be taken.

Rangers' number five, Howe, heads towards the United goal but Q.P.R. could not break through the Leeds defence.

The United defence, with Ray Hankin and John Hawley helping out, clear this Rangers corner.

BELL'S SCOTCH WHISKY *"Afore ye go"*



TONY CURRIE'S LEAGUE CUP CLOSE UP

There should be a scent of Wembley hanging over tonight's Football League Cup quarter-final ties. The winners this evening plus the successful side from last night's Southampton-Manchester City match go into tomorrow's draw for the semi-finals and that means that Wembley will be just 180 minutes away for two teams.

In addition to tonight's United-Luton Town game, holders Nottingham Forest play Brighton at the City Ground and Second Division Stoke City take on Third Division giant-killers Watford in the Potteries.

For a guideline on how the quarter-finals will work out we asked United skipper Tony Currie for his thoughts and Tony comes up with these four sides for the semi-finals: Stoke City, Nottingham Forest, Manchester City and United.

Looking at each of the fifth round ties, Tony starts with the all-First Division game between *Southampton and Manchester City* played at the Dell last night.

"I'm on a loser for a start. By the time you read this we will know the result of the Southampton-City game but looking at the game beforehand I think you must go for City. It will be close though we beat Southampton comfortably at Ell-and-Road recently but at home they're a different side to beat. I have a feeling this will go to a replay at Maine Road and if this happens then you must choose Manchester City. They've had a couple of bad home results in the League over the past few weeks but they got a good win in the UEFA Cup last week and should be too good for Southampton."

Now Tony's prediction about the *Stoke-Watford* game at the Victoria Ground tonight. "Obviously I'd like to see Watford go through because that's where I started my career and I still follow their results closely. It's a differ-

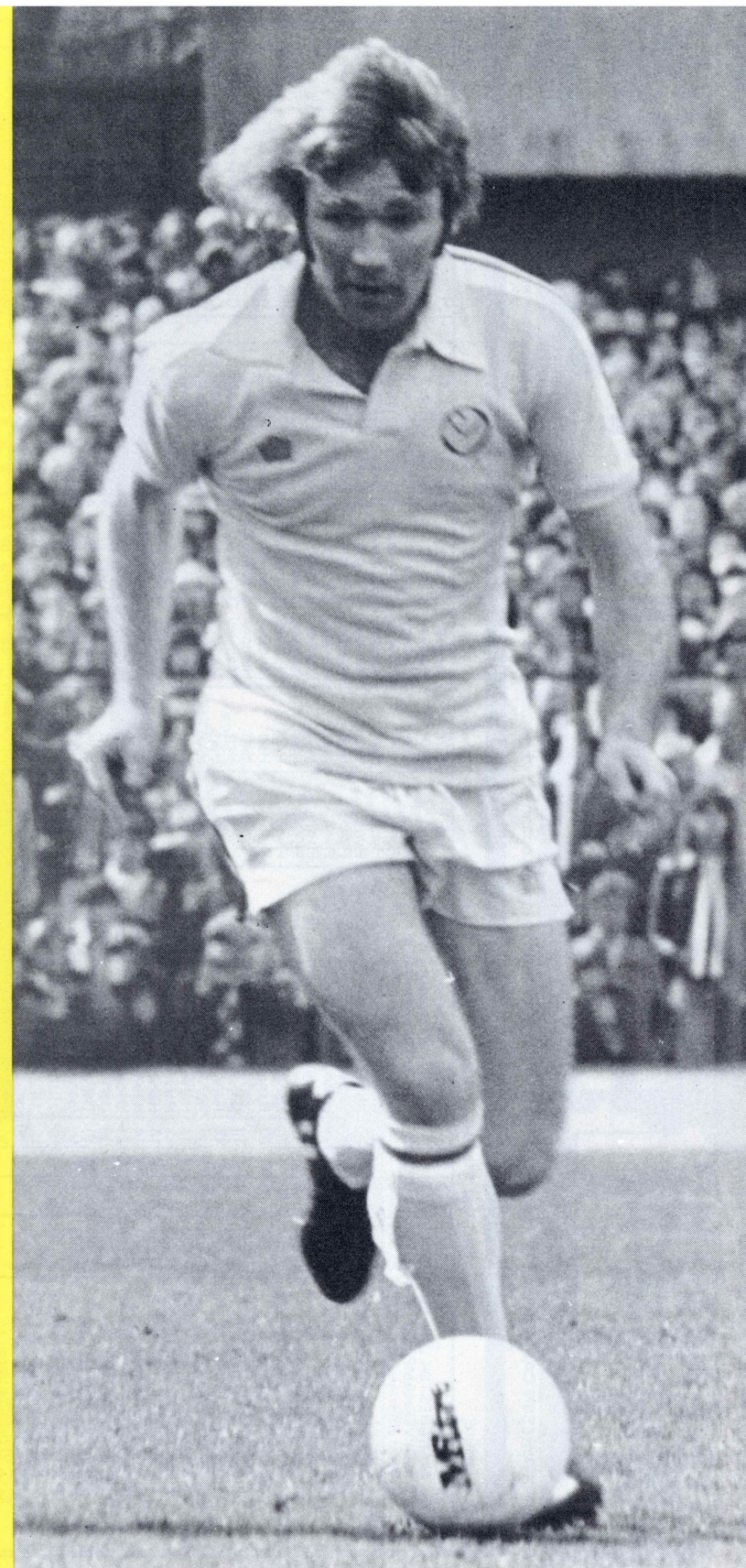
ent set up at Watford now compared with when I was there but they've done well over the past couple of seasons and had that good win at Manchester United in one of the earlier rounds.

"I don't know a lot about the present Stoke team apart from the odd times I've seen them on television, but they are having a good run and look like getting back into the First Division. It will not be an easy game for Stoke because Watford have nothing to lose but I think Stoke will get through to the last four. They will have to keep a close watch on Watford's two big front men, Jenkins and Blissett. They have been scoring a lot of goals and when I have seen them on the television they have looked impressive, particularly in the air."

The League Cup holders *Nottingham Forest* take on Second Division *Brighton* at the City Ground tonight and Tony reckons this is a banker home win. "To be honest I can't see that Brighton stand a chance. I know there are upsets in Cup games but Forest have too much going for them to lose this one."

And finally there's *United's* game against *Luton*. On paper it was a good draw for us," says Tony. "We must not be complacent though. If we do falter it will be our own fault. I don't know much about the Luton side. I know Alan West and of course Bob Hatton has a lot of experience and has been a consistent scorer throughout his career. My only real contact with Luton recently though has been through their club doctor who is also the England team doctor. We had a chat about the match at Wembley last week but he did not give too many secrets away about Luton."

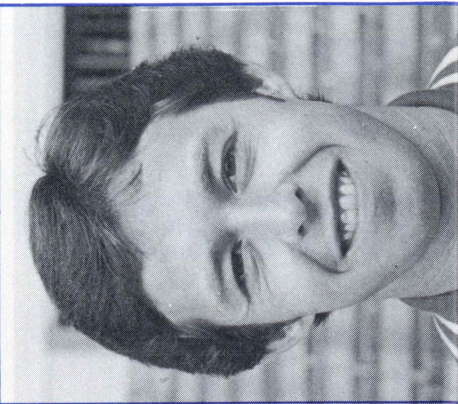
So Tony Currie's League Cup crystal ball comes up with Manchester City — after a replay, Stoke, Forest and Leeds for the semi-finals. "Stoke will do for us in the semi-finals," he says, "but first we must make sure against Luton tonight."



FACTS & FIGURES

HOME FIXTURES IN CAPITALS Leeds score first Name in CAPITALS — Scorer * Figure — No. of Goals + Denotes substituted player * Own Goal

Date	Fixture	Att.	Res.	Pts.	Pos.	1	2	3	4	5	6	7	8	9	10	11	12
Aug.	19 Arsenal	42,057	2-2	1	—	Harvey	Madeley	Gray F.	Flynn	Hart	CHERRY ¹	Harris	Gray E.	Hawley	CURRIE ¹	Graham	—
	23 MANCHESTER UNITED	36,845	2-3	1	—	Harvey	Stevenson	GRAY F. ¹	Flynn	HART ¹	Madeley	Harris	HANKIN ¹	Gray E.	CURRIE ¹	Graham	—
	26 WOLVERHAMPTON	26,267	3-0	3	8	Stewart	Stevenson	Gray F.	Flynn	Hart	Stevenson	Harris	HANKIN ¹	Gray E.	CURRIE ¹	Graham	—
Sept.	29 West Bromwich A. (LC 2)	25,064	0-0	—	—	Stewart	Madeley	Gray F.	Flynn	Hart	Madeley	Hampton	HANKIN ¹	HAWLEY ²	Currie	Graham	—
	2 Chelsea	30,089	3-0	5	—	Stewart	Stevenson	Gray F.	Flynn	Hart	Madeley	Cherry	HANKIN	Hawley	Currie +	Graham	—
	6 WEST BROM (LC2 R' play)	23,316	0-0	—	—	Stewart	Stevenson	Gray F.	Flynn	Hart	Madeley	Cherry	HANKIN	Hawley	Currie	Graham	—
	9 Tottenham	40,125	0-3	5	14	Stewart	Stevenson	Gray F.	Flynn	Hart	Madeley	Cherry	HANKIN	Hawley	Currie	Graham	—
	16 TOTTENHAM	36,062	1-2	5	14	Harvey	Stevenson	Gray F.	Flynn	Hart	Madeley	Harris	HANKIN	Hawley	Currie	Graham	—
Oct.	23 COVENTRY CITY	27,365	0-0	6	12	Harvey	Stevenson	Gray F.	Flynn	Hart	Madeley	Harris	HANKIN	Hawley	Currie	Graham	—
	30 BIRMINGHAM CITY	23,331	3-0	8	11	Harvey	Stevenson	Cherry	Flynn	HART ¹	Madeley	Thomas +	HANKIN ¹	Gray E.	GRAY F. ¹	Graham	—
	2 West Brom LC2 2nd R' play	8,164	1-3	8	—	Harvey	Stevenson	Cherry	Flynn	HART ¹	Madeley	Thomas +	HANKIN	Gray E.	GRAY F. ¹	Graham	—
	7 Bolton Wanderers	27,751	1-3	8	13	Harvey	Stevenson	Cherry	Flynn	HART ¹	Madeley	Thomas +	HANKIN	Gray E.	GRAY F. ¹	Graham	—
	10 Sheffield Utd. (LC3)	40,899	4-1	—	—	Harvey	Stevenson	Cherry	Flynn	HART ¹	Madeley	Thomas +	HANKIN	Gray E.	GRAY F. ¹	Graham	—
	14 WEST BROMWICH A.	25,931	1-3	8	14	Harvey	Stevenson	Cherry	Flynn	HART ¹	Madeley	Thomas +	HANKIN	Gray E.	GRAY F. ¹	Graham	—
Nov.	21 Derby County	19,981	2-2	9	14	Harvey	Cherry	Gray F.	Flynn	HART ¹	Madeley	Gray E.	HANKIN ¹	HAWLEY ¹	Currie	Graham	—
	28 NORTHERN LEAGUE	25,449	2-2	9	14	Harvey	Cherry	Gray F.	Flynn	HART ¹	Madeley	Gray E.	HANKIN ¹	HAWLEY ¹	Currie	Graham	—
	4 Liverpool	51,697	1-1	12	12	Harvey	Cherry	Gray F.	Flynn	HART ¹	Madeley	Gray E.	HANKIN ¹	HAWLEY ¹	Currie	Graham	—
	7 Queens Park R. (LC4)	33,961	2-0	—	—	Harvey	Cherry	Gray F.	Flynn	HART ¹	Madeley	Gray E.	HANKIN ¹	HAWLEY ¹	Currie	Graham	—
	11 ARSENAL	33,961	0-1	12	14	Harvey	Cherry	Gray F.	Flynn	HART ¹	Madeley	Gray E.	HANKIN ¹	HAWLEY ¹	Currie	Graham	—
	18 Wolverhampton	18,961	1-1	13	14	Harvey	Cherry	Gray F.	Flynn	HART ¹	Madeley	Gray E.	HANKIN ¹	HAWLEY ¹	Currie	Graham	—
	22 CHELSEA	24,088	2-1	15	11	Harvey	Cherry	Gray F.	Flynn	HART ¹	Madeley	Gray E.	HANKIN ¹	HAWLEY ¹	Currie	Graham	—
Dec.	25 SOUTHAMPTON (1)	23,597	4-0	17	10	Harvey	Cherry	Gray F.	Flynn	HART ¹	Madeley	Gray E.	HANKIN ¹	HAWLEY ¹	Currie	Graham	—
	2 Ipswich Town	22,526	3-2	19	9	Harvey	Cherry	Gray F.	Flynn	HART ¹	Madeley	Gray E.	HANKIN ¹	HAWLEY ¹	Currie	Graham	—
	9 BRISTOL CITY	22,526	1-1	20	9	Harvey	Cherry	Gray F.	Flynn	HART ¹	Madeley	Gray E.	HANKIN ¹	HAWLEY ¹	Currie	Graham	—
	13 LUTON TOWN (LC5)	22,526	1-1	20	9	Harvey	Cherry	Gray F.	Flynn	HART ¹	Madeley	Gray E.	HANKIN ¹	HAWLEY ¹	Currie	Graham	—
	16 Everton (2)	22,526	1-1	20	9	Harvey	Cherry	Gray F.	Flynn	HART ¹	Madeley	Gray E.	HANKIN ¹	HAWLEY ¹	Currie	Graham	—
	23 MIDDLESBROUGH	22,526	1-1	20	9	Harvey	Cherry	Gray F.	Flynn	HART ¹	Madeley	Gray E.	HANKIN ¹	HAWLEY ¹	Currie	Graham	—
Jan.	30 Queens Park Rangers	22,526	1-1	20	9	Harvey	Cherry	Gray F.	Flynn	HART ¹	Madeley	Gray E.	HANKIN ¹	HAWLEY ¹	Currie	Graham	—
	1 NOTTINGHAM FOREST	22,526	1-1	20	9	Harvey	Cherry	Gray F.	Flynn	HART ¹	Madeley	Gray E.	HANKIN ¹	HAWLEY ¹	Currie	Graham	—
	13 MANCHESTER CITY	22,526	1-1	20	9	Harvey	Cherry	Gray F.	Flynn	HART ¹	Madeley	Gray E.	HANKIN ¹	HAWLEY ¹	Currie	Graham	—
	17 League Cup SF	22,526	1-1	20	9	Harvey	Cherry	Gray F.	Flynn	HART ¹	Madeley	Gray E.	HANKIN ¹	HAWLEY ¹	Currie	Graham	—
	20 Tottenham	22,526	1-1	20	9	Harvey	Cherry	Gray F.	Flynn	HART ¹	Madeley	Gray E.	HANKIN ¹	HAWLEY ¹	Currie	Graham	—
Feb.	27 F.A. Cup 4	22,526	1-1	20	9	Harvey	Cherry	Gray F.	Flynn	HART ¹	Madeley	Gray E.	HANKIN ¹	HAWLEY ¹	Currie	Graham	—
	3 COVENTRY CITY	22,526	1-1	20	9	Harvey	Cherry	Gray F.	Flynn	HART ¹	Madeley	Gray E.	HANKIN ¹	HAWLEY ¹	Currie	Graham	—
	10 Birmingham City	22,526	1-1	20	9	Harvey	Cherry	Gray F.	Flynn	HART ¹	Madeley	Gray E.	HANKIN ¹	HAWLEY ¹	Currie	Graham	—
	17 BOLTON W. (5)	22,526	1-1	20	9	Harvey	Cherry	Gray F.	Flynn	HART ¹	Madeley	Gray E.	HANKIN ¹	HAWLEY ¹	Currie	Graham	—
Mar.	24 West Bromwich Albion	22,526	1-1	20	9	Harvey	Cherry	Gray F.	Flynn	HART ¹	Madeley	Gray E.	HANKIN ¹	HAWLEY ¹	Currie	Graham	—
	3 NORWICH CITY	22,526	1-1	20	9	Harvey	Cherry	Gray F.	Flynn	HART ¹	Madeley	Gray E.	HANKIN ¹	HAWLEY ¹	Currie	Graham	—
	10 Derby County (6)	22,526	1-1	20	9	Harvey	Cherry	Gray F.	Flynn	HART ¹	Madeley	Gray E.	HANKIN ¹	HAWLEY ¹	Currie	Graham	—
	17 LIVERPOOL (LCF)	22,526	1-1	20	9	Harvey	Cherry	Gray F.	Flynn	HART ¹	Madeley	Gray E.	HANKIN ¹	HAWLEY ¹	Currie	Graham	—
	24 Manchester United	22,526	1-1	20	9	Harvey	Cherry	Gray F.	Flynn	HART ¹	Madeley	Gray E.	HANKIN ¹	HAWLEY ¹	Currie	Graham	—
April	31 IPSWICH TOWN	22,526	1-1	20	9	Harvey	Cherry	Gray F.	Flynn	HART ¹	Madeley	Gray E.	HANKIN ¹	HAWLEY ¹	Currie	Graham	—
	10 Middlesbrough	22,526	1-1	20	9	Harvey	Cherry	Gray F.	Flynn	HART ¹	Madeley	Gray E.	HANKIN ¹	HAWLEY ¹	Currie	Graham	—
	14 ASTON VILLA	22,526	1-1	20	9	Harvey	Cherry	Gray F.	Flynn	HART ¹	Madeley	Gray E.	HANKIN ¹	HAWLEY ¹	Currie	Graham	—
	16 Nottingham Forest	22,526	1-1	20	9	Harvey	Cherry	Gray F.	Flynn	HART ¹	Madeley	Gray E.	HANKIN ¹	HAWLEY ¹	Currie	Graham	—
May	28 EVERTON	22,526	1-1	20	9	Harvey	Cherry	Gray F.	Flynn	HART ¹	Madeley	Gray E.	HANKIN ¹	HAWLEY ¹	Currie	Graham	—
	5 QUEENS PARK R.	22,526	1-1	20	9	Harvey	Cherry	Gray F.	Flynn	HART ¹	Madeley	Gray E.	HANKIN ¹	HAWLEY ¹	Currie	Graham	—
	12 F.A. Cup Final	22,526	1-1	20	9	Harvey	Cherry	Gray F.	Flynn	HART ¹	Madeley	Gray E.	HANKIN ¹	HAWLEY ¹	Currie	Graham	—



Brian Flynn, United's scorer on Saturday with his third goal of the season.



Gwyn Thomas deputised for John Hawley against Bristol City last Saturday — his first full League game of the season.

Football League Saturday games K.O. 3 p.m. Central League Fixtures K.O. 2 p.m. All mid-week games K.O. 7.30 p.m. (Other than on Bank Holidays) © Copyright of Football League Ltd.

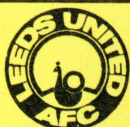
CENTRAL LEAGUE				NORTHERN INTERMEDIATE LEAGUE				DIVISION ONE TABLE												APPEARANCES AND GOALSCORERS 1978-79							
F A				F A				Home				Away				App				FLC				Gls			
Aug.	19 BURNLEY	1-0	Aug.	19 HARTLEPOOL	2-0	Aug.	19 Liverpool	P	W	D	L	F	A	W	D	L	F	A	Pts	Cherry	16	4	2				
22	Sheffield United	0-0	26	Chesterfield	1-2	26	Everton	19	9	1	0	26	2	5	2	2	18	6	31	Currie	14	4	5				
26	Blackburn Rovers	1-1	Sept.	2 Sunderland	1-2	Sept.	9 SHEFFIELD WED.	18	7	1	0	14	3	4	6	0	13	8	29	Flynn	19	5	3				
Sept.	4 WOLVERHAMPTON	1-0	23	9 SHEFFIELD WED.	0-2	23	W.B.A.	18	5	3	1	20	7	5	2	1	13	7	25	Graham	17	5	5				
2	Nottingham Forest	1-1	30	Hull City	2-2	30	Arsenal	18	5	4	0	18	8	3	3	10	9	23	23	Gray E.	13	3(1)	2				
9	SHEFFIELD WED.	2-1	7	30 SHEFFIELD UNITED	2-2	7	Nottingham Forest	17	3	5	0	9	5	4	4	1	10	6	23	Gray F.	18	5	5				
13	BURY	2-1	Oct.	7 Cup—First round First leg		Oct.	Coventry City	18	6	4	0	19	10	2	2	4	6	13	22	Hampton	2	2	—				
16	Manchester City	0-0	14	BARNSELY	1-3	14	Manchester United	18	4	3	1	11	8	4	3	3	16	20	22	Hankin	18	5	6				
23	COVENTRY CITY	4-2	28	Cup—First round 2nd leg		28	Tottenham	18	5	3	2	11	10	3	3	2	11	16	22	Harris	10(1)	—	1				
30	WEST BROMWICH A.	0-0	28	Barnsley	0-3	28	Leeds United	19	5	1	4	21	11	2	5	2	13	14	20	Harvey	16	3	—				
14	Bolton Wanderers	2-1	Nov.	4 ROTHERHAM	1-3	Nov.	Aston Villa	18	2	4	2	9	5	2	3	4	10	17	20	Hart	19	5	3				
21	BLACKPOOL	2-0	11	4 HUDDERSFIELD	2-2	11	Bristol City	19	4	2	3	14	12	3	3	4	8	10	19	Harvey	16	3	—				
28	Derby County	0-0	25	11 Middlesbrough	1-4	25	Southampton	19	4	4	1	14	10	1	3	6	7	18	17	Lorimer	11(1)	3	—				
Dec.	4 LIVERPOOL	2-3	Dec.	25 YORK CITY	P	Dec.	Derby County	19	6	2	2	18	14	1	1	7	7	23	17	Madley	19	4	1				
11	Burnley	0-1	25	2 NEWCASTLE UTD.	P	25	Manchester City	17	3	2	4	14	3	2	4	11	9	16	20	Stevenson	10	3	—				
18	NOTTINGHAM FOREST	3-3	9	Newcastle United		9	Norwich City	17	4	2	1	11	0	4	3	1	11	16	16	Stewart	3	2	—				
18	BLACKBURN ROVERS	2-2	23	Barnsley		23	Ipswich Town	19	3	0	6	9	13	3	2	5	11	15	14	Thomas	1(1)	1	—				
25	Wolverhampton W.	1-1	Jan.	30 BARNSELY		30	Bolton Wanderers	19	4	3	3	16	13	1	1	7	9	24	14	Own Goals	—	—	1				
Dec.	2 HUDDERSFIELD TOWN	P	6	Scunthorpe Utd.		6	Middlesbrough	18	3	2	3	9	7	2	1	7	12	18	13	Figure in / denotes substitution							
9	Everton	1-2	13	13 CHESTERFIELD		13	Queens Park Rangers	18	2	4	3	6	9	1	2	6	7	14	12	DIVISION ONE HOT SHOTS							
16	ASTON VILLA		20	20 SUNDERLAND		20	Wolverhampton	18	3	1	4	13	1	0	9	6	22	9	(including League Cup)	WORTHINGTON, Bolton							
23	Manchester United		Feb.	27 Sheffield Wed.		27	Birmingham	19	2	3	5	14	6	0	1	8	4	17	8	WORTHINGTON, Bolton							
30	PRESTON N. E.		10	3 LINCOLN CITY		10	Chelsea	18	1	1	7	10	22	1	3	5	9	14	8	LATCHFORD, Everton							
Jan.	13 Sheffield Wed.		17	HULL CITY		17														BUCKLEY, Birmingham							
20	MANCHESTER CITY		Mar.	24 SCUNTHORPE UTD.		24														RYAN, Norwich							
Feb.	6 Coventry City		31	Huddersfield		31														DALGLISH, Liverpool							
10	NEWCASTLE UNITED		April	7 York City		7														GREENHOFF J., Man. Utd.							
24	West Bromwich Albion		16	GRIMSBY TOWN		16														REGIS, W.B.A.							
3	Blackpool		21	Rotherham United		21														GOWLING, Bolton							
10	DERBY COUNTY		28	Hartlepool		28														STAPLETON, Arsenal							
17	Liverpool		April	7 Huddersfield Town		7														Up to and including Sat. 9th Dec.							
24	SHEFFIELD UNITED																			DIVISION ONE STATISTICS							
31	STOKE CITY																			Best Gate:							
April	14 Bury																			56,136 Man. Utd. v B'ham 20-8-78							
21	Aston Villa																			Lowest Gate:							
28	MANCHESTER UNITED																			11,635 Q.P.R. v Bolton 2-12-78							
May	5 EVERTON																			Most Goals:							
	5 Preston N. E.																			Home win							
																				Liverpool 7 Tottenham 0 2-9-78							
																				W.B.A. 7 Coventry 1 21-10-78							
																				Away win							
																				Tottenham 1 Aston Villa 4 26-8-78							
																				Tottenham 1 Aston Villa 4 23-8-78							
																				Nottingham 1 Liverpool 4 7-10-78							
																				Wolves 0 Aston Villa 4 11-11-78							
																				Wolves 2 Man. Utd. 4 28-10-78							

Tetley

Bittermen.

Join 'em.

The Ideal Present



Leeds United Gift Vouchers

Are available for £1, £2, £5, £10 and can be exchanged for:

- * Goods from the shops at Elland Road and Mail Order items
- * Match Tickets
- * Season Tickets

Details from the United Sports and Souvenir Shop, Elland Road, Leeds LS11 0ES.

AUSTIN MORRIS MG PRINCESS



Lookers

27, Burley Road, Leeds 3. Tel. 39291.

Laugh with

DUNLOP AND RANKEN

Britains *brightest* suppliers of

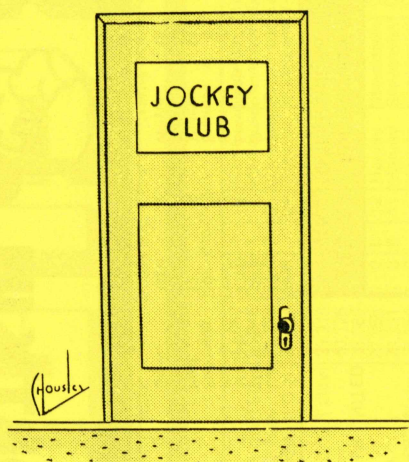
STEEL

for Every Industry

DUNLOP & RANKEN LTD. Head Office WHITEHALL ROAD, LEEDS LS1 1HB

Telephone: 0532 636363

And at : Aberdeen, Bristol, Coatbridge, London, Neasden, Salford, West Bromwich, Wolverton



RESERVES REPORT

United's Reserves went down 2-1 at Goodison Park on Saturday despite taking an early lead against Everton through Peter Daly, playing his first Central League game of the season.

Neil Parker created the chance and David Reid knocked the ball on for Daly to score. Everton equalised just before half-time after a mistake in the United defence and scored again midway through the second half.

"We pushed Keith Parkinson up front for the last 20 minutes and went close to snatching an equaliser but the ball would not go in for us" said coach Brian Green.

United are at home to Aston Villa Reserves on Saturday, kick-off 2 p.m. United Team v Everton: Smith, Parker, Reynard, McGhie, Firm, Parkinson, Savill, Daly, Reid, Sturman, Lorimer. Sub. Skilling.



PETER DALY



DAVID REID

JUNIOR REPORT

After twice being postponed, United's Juniors eventually played their F.A. Youth Cup match against Yorkshire Amateurs on Saturday, winning 2-0 with first half goals from Steve Balcombe and Phil Porthouse.

United played well in the first half and deserved their interval lead. Balcombe scored with a header and Porthouse added a second following a corner.

Amateurs came more into the game in the second half and United's hero was goalkeeper John Lukic who made three fine saves.

Garry Fozzard also did well at the centre of the United defence.

United Team: Lukic, Freney, Porthouse, Bennett, Fozzard, Tyerman, Thompson, Barrowcliffe, Balcombe, Matthews, MacPhee. Sub. Hawkins.



PHIL PORTHOUSE

TURNSTILE TALK



Total attendances in the last round of the League Cup added up to more than 227,000, an average of just over 25,000 for each of the nine ties which reflects the popularity the competition has now gained.

The top attendance in the fourth round was the 48,503 crowd at Goodison Park for the Everton-Nottingham Forest match and this was one of four gates above 40,000 in this season's competition before tonight's fifth round stage.

Manchester United figured in two of the other games that attracted crowds in excess of 40,000 — for their second round 'away' tie with Stockport County which was switched to Old Trafford and the third round match against Watford.

The other 40,000 plus attendance was at the Sheffield United-Leeds United tie in the third round when this Yorkshire derby set record ground receipts for Bramall Lane.

United's five League Cup ties before tonight's meeting with Luton had been watched by a total of 126,212 spectators while Luton's League Cup progress to the quarter-finals has been followed by a total crowd of 45,947, a figure swollen by the 32,727 gate that watched Town's outstanding win at Villa Park in the last round.

It is at this stage of the competition that interest in the League Cup really begins to snowball and with some attractive ties tonight, there is a fair chance that attendances for the fifth round will provide the competition with another healthy boost.

FIRST DIVISION ATTENDANCE AVERAGES

	<i>Best</i>	<i>Average</i>
Manchester United	56,136	50,182(8)
Liverpool	51,697	48,030(9)
Tottenham	50,541	41,388(9)
Everton	53,131	41,082(8)
Manchester City	46,170	40,336(8)
Arsenal	51,902	38,504(9)
Aston Villa	43,922	34,065(8)
Nottingham Forest	41,223	30,693(8)
West Bromwich Albion	38,000	29,069(8)
Leeds United	36,845	28,392(9)
Chelsea	41,594	27,949(8)
Birmingham City	36,146	24,177(9)
Coventry City	27,365	23,575(9)
Bolton Wanderers	32,249	23,575(9)
Derby County	26,480	22,751(9)
Ipswich Town	28,114	21,829(9)
Bristol City	27,016	21,607(9)
Southampton	22,803	21,269(9)
Norwich City	25,695	20,139(9)
Wolverhampton	23,979	19,293(8)
Queens Park Rangers	26,626	19,020(9)
Middlesbrough	20,471	16,830(8)

TICKET TALK

Tickets for our home game against **Nottingham Forest** at Elland Road on New Year's Day, January 1st, kick-off 3.00 p.m., are now on sale from the Ticket Office in the West Stand Car Park.

This match is an all-ticket game and ground Tickets for the Spion Kop, the Lowfield Road terraces and the Boys Enclosure are on sale for £1 each, Boys Enclosure 50p.

Seat tickets are available at £2.50, £2.00, £1.75 and £1.50.

The main Ticket Office is open throughout the week from 9.15 to 5.00 Mondays to Fridays and 9.15 to 3.00 on Saturdays.

Tickets are also available now for our next League match at Elland Road against **Middlesbrough** on December 23rd and for all our remaining League games at the ground this season.

We have some ground tickets available at £1 each for United's away game at **Everton** on Saturday, December 16th and unreserved seats tickets can be purchased direct from Goodison Park on Saturday.

If you require details of ticket sales at Elland Road, please telephone the club's Information Service, Leeds 702621 for all the latest news. United go into the busy period of Christmas and New Year games with a home match against Middlesbrough at Elland Road a week on Saturday, December 23rd, kick-off 3.00 p.m. John Neal's side made a disappointing start to the season but have improved matters in recent weeks since the double signing of Irish winger **Terry Cochrane** from Burnley and **Micky Burns** who had a brief spell with Cardiff before the former Newcastle striker returned to the North East. Burns has been finding the net fairly frequently since moving to Ayresome Park and another Boro newcomer to look out for is goalkeeper **Jim Stewart** who won his first Scottish cap against Austria in October. **David Mills** and **David Armstrong** have also been among the goals regularly in the last few weeks.

NOTICE BOARD

IF THERE'S A DRAW

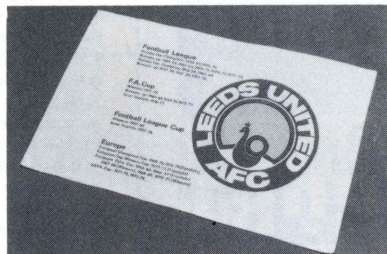
In the event of tonight's game ending in a draw the replay will be played at Kenilworth Road, Luton, next **Tuesday, December 19th**, kick-off 7.30 p.m.

The main Ticket Office at Elland Road will have seat tickets available from tomorrow. The draw for the semi-finals of the League Cup is due to be made tomorrow. The matches will be played over two legs on January 17th and January 24th. The Final is scheduled to be played at Wembley on Saturday, March 17th.

PLEASE NOTE . . .

The offices at Elland Road will be closed between 12 noon and 3.00 p.m. next Wednesday, December 20th. The Pools Office and Sports and Souvenir Shop in Elland Road will also be closed between these times.

PILLOW TALK



For all fans who dream of Leeds United, the Elland Road Sports and Souvenir Shop has the ideal Christmas present . . . United pillow cases showing the club badge and listing the honours and achievements over the past decade.

The pillow cases will make an ideal Christmas present and are available on mail order, reference LS 93, priced at £1.65.

The main Sports and Souvenir Shop and the Kop Shop on the Lowfield Road side of the ground will be open this evening and for last-minute Christmas shoppers, the Elland Road shop will be open throughout next week. There's a wide range of gift ideas to suit United fans in all age groups.

Remember too that United supporters living outside the city can shop from the comfort of their own home by using our prompt mail order service. For an up to date list of items available through the post, write to the United Sports and Souvenir Shop, Elland Road, Leeds 11, marking your envelope 'Price List' and enclosing a stamped addressed envelope.

SHE'S IN THE MONEY



Mrs. Edna Lockwood of Orchard Square, Crossgate, Leeds 15, called in to buy some fruit from the Parade Fruit Stores in Selby Road, Leeds, a few days ago and walked away with a £1,000 prize in the Leeds and United Lotteries.

Mrs. Lockwood is pictured receiving her cheque from Mr. Bill Wilson who sold her the winning ticket at the Parade Fruit Stores. *Photo by Joe Bell.*

Other recent big winners in the Leeds and United Lotteries have included Mrs. S. Walsh of Weetworth Park, Castleford and B. Wormald, Green View, Meanwood, Leeds 16.

You still have time to win a possible big cash prize, paid out instantly, in the Leeds and United Lotteries before Christmas. Tickets are on sale from shops and businesses throughout the Leeds and surrounding areas and the Lottery Kiosks will be open at the ground this evening in the West Stand Car Park and by the Kop Shop on the Lowfield Road side of the ground.

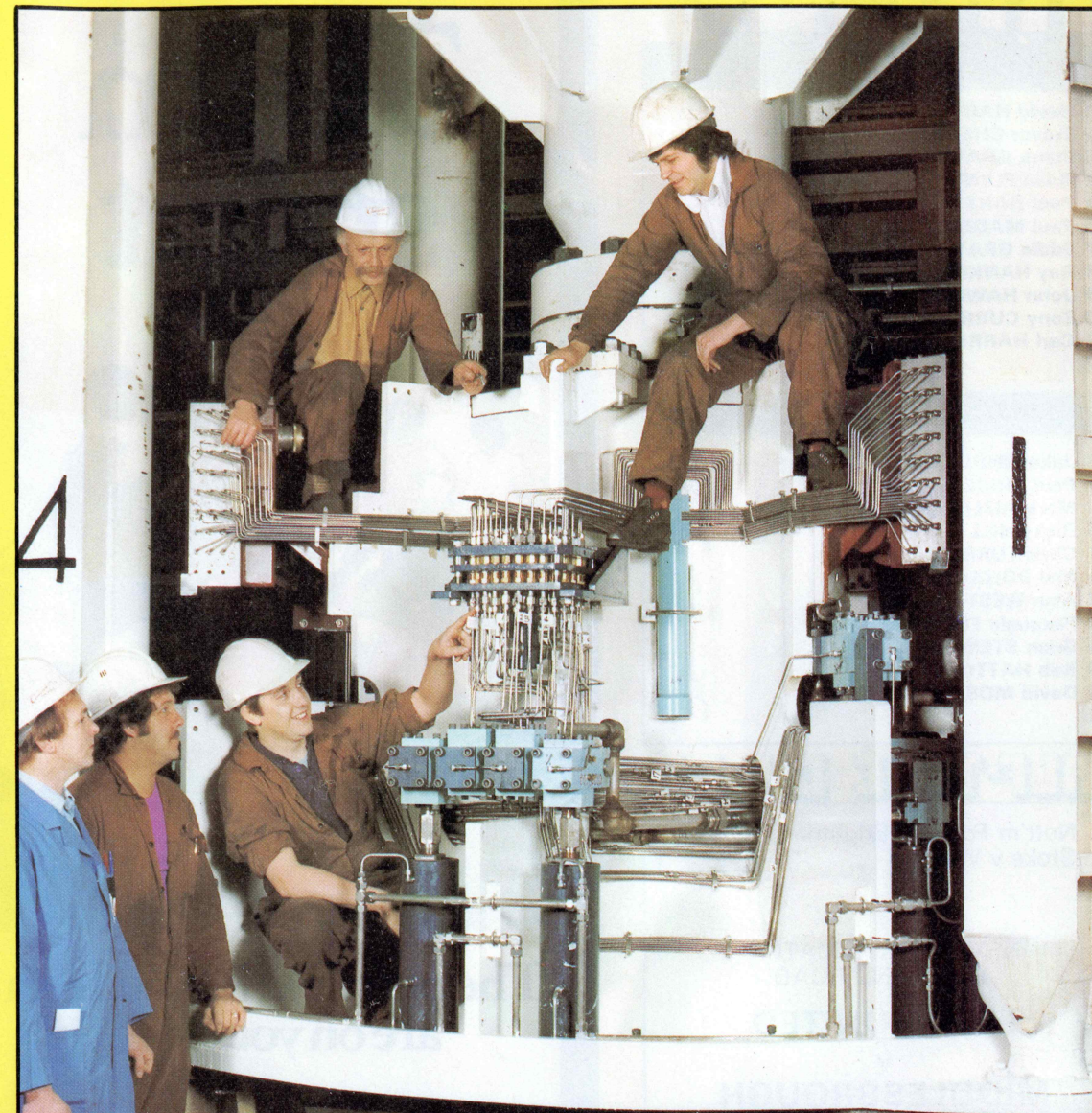
It only costs 25p to purchase a ticket and like Mrs. Lockwood, you could find that it is the key to a £1,000 prize.

If you would like full details of how to become an agent for the Leeds and United Lotteries, telephone the Elland Road Lottery Office on Leeds 771170. They will explain how you can boost your business as an agent by earning regular commission plus a bonus on all big-winning tickets sold.

IT'S A FACT

Supporter Julian Wilson of 22 Osgathorpe Road, Sheffield, comes up with an interesting statistic about the lack of drawn League matches at Elland Road. Writing before Saturday's game against Bristol City Mr. Wilson said that United had played 23 successive home League games without a draw.

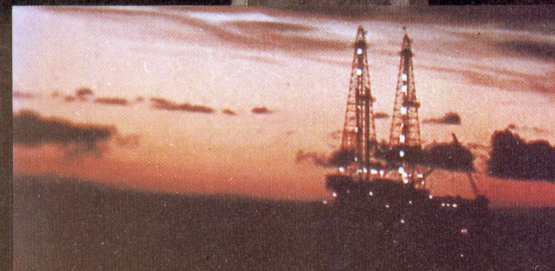
"The last draw at Elland Road in the League was against Norwich City on November 5th, 1977, which ended in 2-2. Since then United had played 14 home games to the end of last season and nine this season, all ending in a definite result."



BLOWOUT PREVENTERS ARE MADE IN LEEDS

Cameron
IRON WORKS LTD.

QUEEN STREET
STOURTON
LEEDS LS10 1SB



LINE-UP

LEEDS UNITED

White Shirts
White Shorts

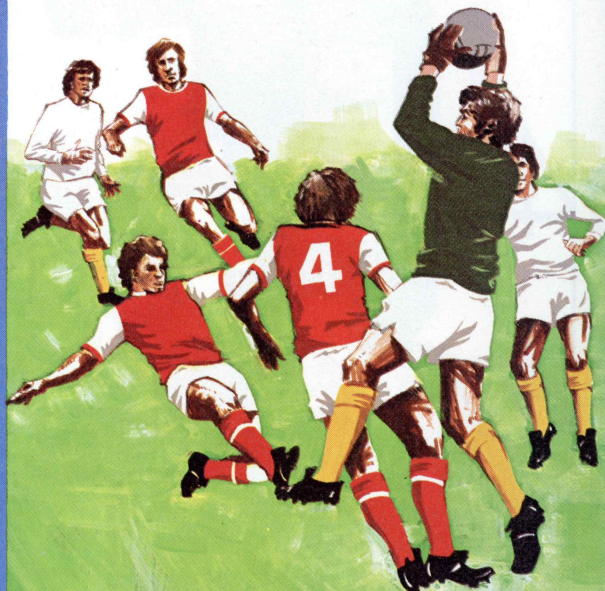
- 1 David HARVEY
- 2 Trevor CHERRY
- 3 Frank GRAY
- 4 Brian FLYNN
- 5 Paul HART
- 6 Paul MADELEY
- 7 Eddie GRAY
- 8 Ray HANKIN
- 9 John HAWLEY
- 10 Tony CURRIE (Capt.)
- 11 Carl HARRIS
- 12

LUTON TOWN

Orange Shirts
Navy Blue Shorts

- 1 Jake FINDLAY
- 2 Paul PRICE
- 3 Mark AIZLEWOOD
- 4 Ricky HILL
- 5 Chris TURNER
- 6 Mal DONAGHY
- 7 Alan WEST (Capt.)
- 8 Pasquale FUCCILLO
- 9 Brian STEIN
- 10 Bob HATTON
- 11 David MOSS
- 12

Team spirit



- A Nott'm Forest v Brighton
B Stoke v Watford

NEXT LEAGUE MATCH
AT ELLAND ROAD

LEEDS UNITED

v

MIDDLESBROUGH

Saturday 23rd December, 1978

Kick-off 3.00 p.m.

Tickets available from the
Elland Road Ticket Office

The people at Allied Irish
are on your side



Allied Irish Banks
Ireland's biggest bank in Britain

Albion House, Albion Street, Leeds LS2 8LE
Telephone: 443003

TONIGHT'S REFEREE
K. McNALLY
South Wirral
LINESMEN:
D. W. BODLEY
Middlesbrough
(Red Flag)
B. COXON

51

YOUR GOLDEN GOAL TIME NUMBER