

LEAGUE DIVISION TWO
1978/79

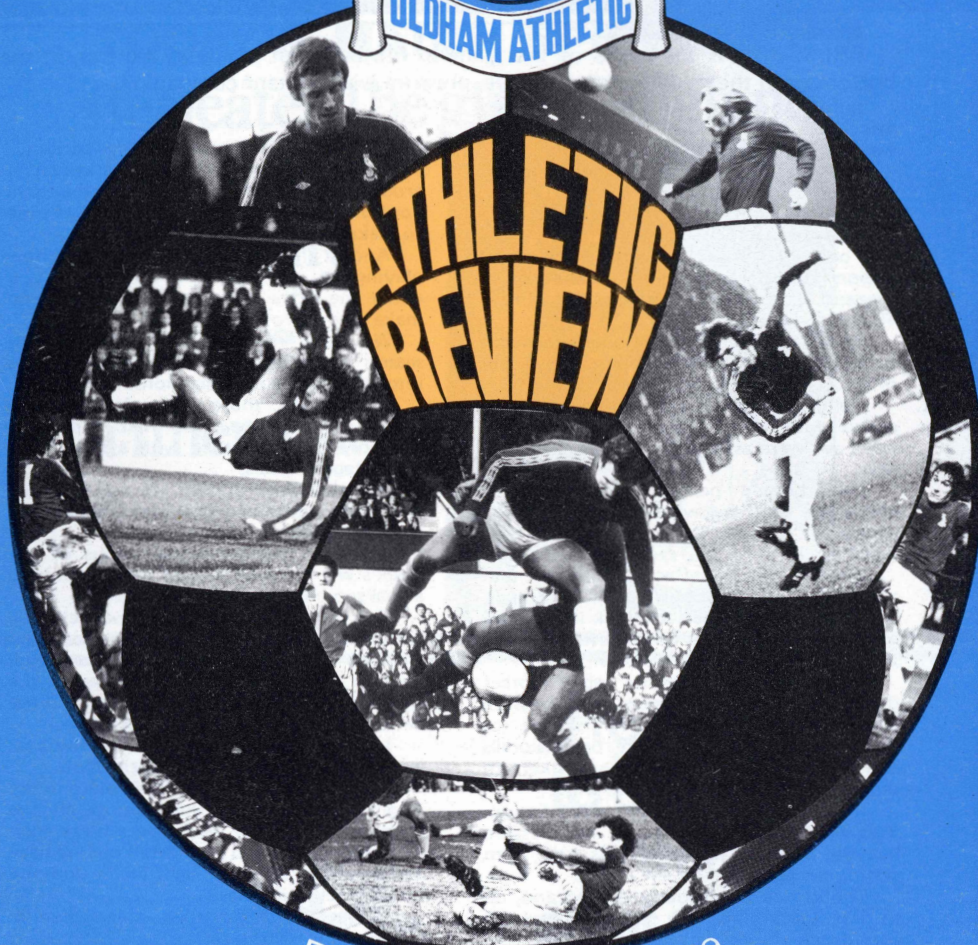
OFFICIAL PROGRAMME OF
OLDHAM ATHLETIC A.F.C. LTD.

ATHLETIC
V
LUTON TOWN

SATURDAY
11th NOVEMBER 1978
KICK-OFF 3.00 p.m.



**ATHLETIC
REVIEW**



REVIEW PRICE 15pence

OLDHAM ATHLETIC A.F.C. LTD.



HONOURS:

Division 1: Runners-up — 1914-15.
Division 2: Runners-up — 1909-10.
Division 3: Champions — 1973-74.
Division 3 (North): Champions — 1952-53.
Division 4: Third (promoted) — 1970-71.
Runners up — 1962-63.



Looking into Latics with JIMMY FRIZZELL

PRESSURE is the name of the game in football. For teams at the top, at the bottom or in the middle of the League, pressure is a constant companion.

In fact, there are few, if any jobs that are associated with pressure in quite the same way as League football.

For what other business is there when all the week's work, all the planning and effort, is focussed on one 90 minute spell on a Saturday afternoon?

Footballers and football managers respond in different ways to the cauldron of pressure that encloses them for almost 10 months a year.

Some thrive on it, some buckle beneath its strain but all have to accept it as a fact of life.

Following our disappointing run that ended with the 3-2 win at Millwall last week we were assailed by pressure from all sides.

Our League position was becoming precarious and we were all aware that a change in fortunes and results was needed quickly.

But such are the effects of pressure that the longer an unsuccessful run continues, the harder it becomes to break it. And we have seen why that is so in several of our performances already this season.

It is, after all, pressure which forces defenders to make mistakes; it is pressure which lures elementary errors out of normally sound and reliable professionals and it is pressure which forces strikers to snatch at chances and put them wide.

It is a strange kind of contradiction. You need a good win to ease the pressure but the pressure itself prevents you from getting the good win.

Confidence is obviously eroded and, up to last week, we had shown a lack of confidence in all departments.

It is especially obvious in attacking players because theirs is a job that depends

upon instant decisions and decisive actions.

When the confidence of marksmen is eroded, it forces them to look for the extra yard of space, the extra split second of time to make sure of a goal.

And at the level of football we are now playing in, players will not allow you either the extra space or the extra time to make sure in front of the goal.

We have had countless chances this season when players have got themselves into excellent scoring positions.

Last season, those same players would have whacked the ball first time and probably been rewarded with a fairly high percentage of goals.

But this time players are not shooting first time and some excellent chances are going begging.

That was the additional bonus of last week's win... even though we did not have a goal scored by one of our strikers.

The result — especially as it was achieved away from home — should have worked wonders for the team's confidence and, because it has helped to take some of the pressure off our backs, ought to have benefits that we will see this afternoon.

In fact, this has been one of the best week's of the season so far for the club.

Not only have we claimed a place in the Anglo-Scottish Cup Final against all the odds; not only have we ended a bleak spell of results with a win at Millwall but we have also begun to see some light at the end of a long tunnel of injuries.

Winger Carl Valentine and defender David Holt are now making excellent progress and both should be in a position to challenge for first team places in the very

H. Wiide (Chairman), R. Schofield (Vice - Chairman)
DIRECTORS: D.A. Brierley, G.T. Butterworth, J. Kershaw,
G. Knight, I.H. Stott, F.D. Whitehead
MANAGER: Jimmy Frizzell
GENERAL MANAGER / SEC: W. Griffiths.
PHYSIOTHERAPIST: R. Jay, CLUB DOCTOR: R.B. Hollos
COMMERCIAL MANAGER: B. Joyce

Editor: C. Higginbottom
Art Design: Comprehensive Art Services
Photographs:
R.H.H. Venables (Oldham Camera Club)
Print: L.V. Lawlor, Oldham

near future.

And that will leave us with only broken-leg victims John Platt and Gary Hoolickin on the sidelines. That is, of course, bad enough but it is much better than the sort of situation we have faced earlier this season when we had as many as seven players out of action through injury.

We are not, in the business of making excuses but I think you will agree that few squads in Division Two could have survived such massive injury problem without

suffering with their results.

Hopefully — and we all have our fingers crossed at Boundary Park — we are through the worst of it all now and should begin to catch up on some of the points we have lost this season.

And every win we achieve over the next few weeks will help to shed some of the burden of pressure from off our backs. By the end of the year, we will probably be wondering just what it was we were all so worried about in September and October.

TODAY'S MATCH SPONSORS Beefeater. The gin of England.

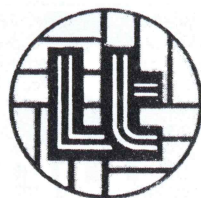
You won't
receive
a finer gin.



From top
to bottom
a truly
great sherry

TODAYS VISITORS TO BOUNDARY PARK

WELCOME TO LUTON TOWN



LUTON TOWN F.C. 70/72 Kenilworth Road, Luton

President: T. Hodgson Chairman: D. Mortimer
 Directors: H. Richardson, R.J. Smith, E.S. Pearson, L.L.M.
 Club Secretary: J.S. Wilkinson Company Secretary/Comm. Manager: D.G. Lygo, A.C.M.A.
 Team Manager: David Pleat
 Year Formed: 1885 Turned Professional: 1890 Limited Company: 1897
 Previous Grounds: 1885, Excelsior, Dallow Lane, 1897 Dunstable Road
 1905 Kenilworth Road
 Ground Capacity: 25,000 (17,000 covered)

HONOURS

Football League highest position in Division 1: 8th 1957-58
 Division 2, Runners-up: 1954-55, 1973-74
 Division 3, Runners-up: 1969-70
 Division 4, Champions: 1967-68
 Division 3(S), Champions: 1936-37; Runners-up 1935-36
 F.A. Cup best season: Runners-up 1959
 Football League Cup best season: 4th Round 1963
 Record Victory: 12-0 Bristol Rovers Division 3(S) April 13th 1936
 Record Defeat: 1-9 v. Swindon Town Division 3(S) August 28th 1920
 Most League points: 66 Division 4 1967-68 (equalled Division 4 record)
 Most League goals: 103, Division 3(S) 1936-37
 Highest League scorer in season: Joe Payne, 55, Division 3(S) 1936-37
 Most Goals in total aggregate: 243, Gordon Turner 1949-64
 Most capped player: George Cummins 19, Eire
 Most League appearances: Bob Morton 494, 1948-64
 Record Transfer Fee received: £350,000 from Manchester City for Paul Futcher, June 1978
 Record Transfer Fee paid: £120,000 to Swindon Town for Dave Moss, June 1978
 Managers since the war: George Martin, Dally Duncan, Syd Owen, Sam Bartram, Bill Harvey,
 Allan Brown, Alec Stock, Harry Haslam
 Club Nickname: "Hatters"

PEN PICTURES

MILIJIA ALEKSIC: Luton snapped up a bargain when Aleksic was made available by Plymouth in January 1977. The goalkeeper was unsettled in the West Country, and the transfer was the turning point in his career. He has been first choice ever since, and Luton supporters have nicknamed him "Elastic" — it's easier to chant than Aleksic, and pays due tribute to his agility and

reflexes. Son of Yugoslav parents, but born in the North of England, he started his football career as a part-timer with Stafford Rangers.

ALAN JUDGE: Spotted playing in schoolboy soccer in Hertfordshire, this young goalkeeper has made rapid strides since being signed as an apprentice in the summer of 1976. He was upgraded to junior pro within a year, and is now putting on the pressure in his ambition to break

into the League side.

PAUL PRICE: Luton's longest-serving player, Price has been a model professional since being recruited from youth soccer in 1971. Consistent performances in junior and reserve teams marked him out as an exciting prospect, but the full-back's path to the top had to overcome near-tragedy. On the verge of the League scene in 1974, he broke his leg. He fought his way back to fitness, only to break it for a second time. But the second come-back was permanent, and Price has been a regular member of Luton's side for the past three years.

JIM McNICHOL: Prolific producers of youth players, Ipswich decided that Scottish-born defender McNichol was surplus to requirements when he completed his apprenticeship at Portman Road in the summer of 1976. Luton acted quickly to sign him, and he has been a loyal member of their squad ever since, able to play anywhere at the back.

DAVID CARR: Spotted by a Luton scout near his home town of Margate, full-back Carr joined Luton when he left school at 16 in 1973. Can play equally well in the back four or in midfield, but made his major breakthrough last season when he made the left back position his own after Luton sold Steve Buckley to Derby County.

GRAHAM JONES: Recruited from Manchester schools football at the age of 16 in 1975, Jones turned out to be a highly versatile player. He made rapid strides through Luton's lower teams, and made his League debut at 17. He started as a centre-half, but has also sampled a midfield role in the Second Division, and seems equally at home in either department.

STEVE SHERLOCK: One of nine new players who joined Luton in the hectic first four months of David Pleat's reign as manager. He passed his football apprenticeship with Manchester City, and in 80 Central League games for them was being watched carefully by a number of clubs. Scottish international Willie Donachie kept Sherlock out of the Maine Road limelight, and Luton stepped in for his signature when City allowed him to leave in May 1978.

MARK AIZLEWOOD: David Pleat's confidence in this stylish defence or midfield player was backed dramatically in April 1978. Luton splashed out £50,000 to bring him out of the Fourth Division, where he was playing for Newport County, when he was still only 18. He is a former Welsh Youth international skipper.

TERRY HAYES: Always seeking promising young talent, Luton manager David Pleat acted quickly when he heard that midfielder Hayes might be allowed to

leave Linfield. Pleat won a race against several other clubs to snap up the 18-year-old prospect in March 1978. Hayes had already captained the Northern Ireland Youth team, and won an under-21 cap.

MAL DONAGHY: Glasgow Celtic, Queen's Park Rangers, Sheffield United and Wolves were all reported to be interested in the future of Northern Ireland under-21 international Donaghy in the summer of 1978. But Luton were first off the mark, and secured his transfer from Larne.

CHRIS TURNER: Luton fought off rival overtures from First Division Norwich to secure the services of accomplished defender, Turner who had been a mainstay at Peterborough for nine seasons. Luton boss Pleat was once a playing colleague of Turner's at Peterborough, had him watched in the 1977/78 season, and then laid out £95,000 for his signature.

PASQUALE FUCCILLO: Son of Italian parents who settled in Bedford, midfield dynamo Fuccillo — "Lil" to his friends and the Luton fans — supplies a lot of Luton's midfield attacking drive. Signed as a 16-year-old apprentice in the summer of 1973.

ALAN WEST: A brilliant creative player in midfield, West was one of the many young stars to come from Burnley. An England under-23 international, he moved to Luton in October 1973 for £100,000.

RICKY HILL: A midfield player of immense talent, Hill was signed as an apprentice from schoolboy football in North London as a 16-year-old, and within a year his delicate ball skills and explosive shooting had earned him his place in Luton's League side while still only 17. Now 20, he has been capped by England at youth level.

JOHN LUCAS: Luton thought they had missed out when midfielder Lucas, a Welsh schoolboy international, turned down their approaches when he left school at 16. He went to Manchester United instead, but within a year, in June 1978, he decided that his prospects might after all be better elsewhere — and Luton got their man after all.

GARY HEALE: Made the breakthrough into Second Division football last season after being with Luton since leaving school in Canvey Island. A good target man in attack, he decided to take his chance with Luton despite approaches from Tottenham, and marked his League debut with a goal. But the highlight of his career so far was when he scored twice at Old Trafford last season, when Luton took mighty Manchester City to a second replay in the Football League Cup.

NIGEL JOHNSON: A quick forward always on the look-out for goals, Johnson is in his second year as a professional with Luton after coming up through their junior teams. He was recruited from schoolboy football in Welwyn Garden City, and is now on the fringe of Football League soccer.

DAVID MOSS: Respected throughout the game as a model clubman, Moss gave sterling service to Swindon in the Third Division before moving up a Division last summer. He was their leading scorer, and Luton liked his pace and accuracy. His £110,000 transfer was a major part of David Pleat's re-building operation in the 1978 close season.

BOB HATTON: One of the most experienced strikers in the game, Luton moved quickly to secure the signature of Hatton in the close season. He had proved that he could score goals in any League in service with Birmingham, Carlisle and Blackpool, and his disappointment at Blackpool's relegation to the Third Division was cancelled out when Luton's £50,000 cheque took him back up to the Second.

KIRK STEPHENS: Luton Manager David Pleat's knowledge of non-League football paid handsome dividends when he signed Stephens, a promising right-back with Nuneaton in the Southern League. Pleat was once manager of Nuneaton, and one of his first moves after taking charge at Luton was to go back to his old club to take Stephens into the League scene for a bargain £5,000 fee. Stephens immediately bridged the gap to full-time football to force his way into Luton's first team squad.

Manager — DAVID PLEAT: Few managers in football can have been thrust into their jobs more dramatically than Luton's boss David Pleat. As a player he had played on the wing for England Youth and Nottingham Forest, and then had three seasons with Luton. Injuries affected his

career as he moved on to Shrewsbury, Exeter and Peterborough, but to took FA coaching courses to stay in the game, and tried his hand at management with Nuneaton, in the Southern League.

In 1975 Luton Town hired him for the second time in his life, to be coach to the reserve side. And events really moved rapidly a couple of years later. In December 1975 Luton's first team coach Roy McCrohan left to take a job in the U.S.A. and Mr. Pleat moved up into his job. And within two months Luton lost manager Harry Haslam to Sheffield United, and asked Pleat to take charge.

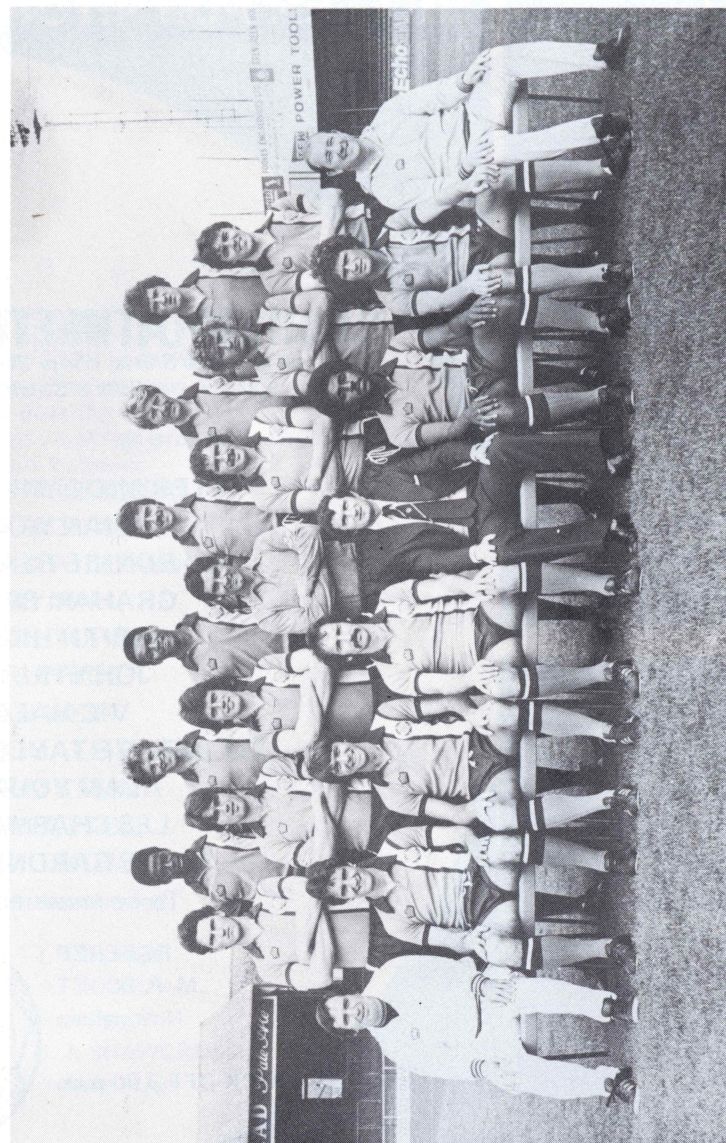
At 33 he was one of the youngest managers in the League, but within six months had shown his intentions of re-building the Luton side.

Last season, after a good start, they slipped to within a point of the relegation zone, and Pleat's answer was to carry out the biggest shake-up of players anyone at Kenilworth Road can remember. His transfer turnover approached £900,000 in eight months, with four players sold and nine new faces introduced.

Ass. Manager — KEN GUTTERIDGE: One of the first moves David Pleat made after being named manager of Luton Town in January 1978 was to contact a man he had known and respected for years — Ken Gutteridge.

Like Pleat, Gutteridge had served his "management apprenticeship" in the world of non-League soccer. Once a winger with Birmingham City, Sheffield Wednesday and York City, Gutteridge started coaching with Notts. County before going to Preston, Burton Albion and then as chief coach to Brighton.

He had four years at Brighton, assisting Peter Taylor and then Alan Mullery, but had few doubts about his decision when Luton asked him to move on.



LUTON TOWN

Front Row: K. Gutteridge (Assistant Manager), P. Fuccillo, A. West, R. Hatton, D. Pleat (Manager), R. Hill, P. Boersma (transferred to Swansea), R. Johnson (Physiotherapist). Middle Row: M. Aizlewood, J. McNichol, G. Jones, M. Aleksic, C. Turner, P. Price, M. Donaghy. Back Row: G. Ingram, K. Stephens, B. Stein, D. Moss, D. Carr, S. Sherlock

FURNISHERS R. SCHOFIELD & SON

14/16/27 OLD ROAD
FAILSWORTH, MANCHESTER

Telephone: 061-681 2292

SUNTAL CYCLES

45/47 RIPPONDEN ROAD

Tel. 624 7409 anytime.

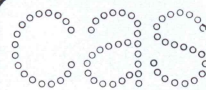
£25 MINIMUM ALLOWANCE for your own cycle when you part exchange it for a new one from the RALEIGH OR VIKING RANGE

SMALL SELECTION OF RECONDITIONED AND SECOND HAND CYCLES AVAILABLE. PART EXCHANGES WELCOME

NO DEPOSIT CREDIT TERMS AVAILABLE.

CYCLE REPAIR SERVICE

Open daily 9 a.m. to 6 p.m.; Late night Friday until 9 p.m.; Sunday 10 a.m. to 1 p.m.



specialists in

Finished Artwork · Typography · Graphic Design · Illustration & other related services

COMPREHENSIVE ART SERVICES

Courtlets House · 38 King Street West · Manchester M3 2WZ · Tel: 061 834 8552

You will be sure to 'score'
every time when you shop at

Phil Cohen & Son Limited

Oldham's leading
Gents clothiers and outfitters



Bespoke Tailoring Department,
Established over 75 years.

**Phil Cohen
& Son Limited**
2, MARKET PLACE
OLDHAM
061-624 2422/3

COURTLETS INSURANCE

BROKERS LIMITED
5, QUEEN STREET, OLDHAM OL1 1TH
TELEPHONE: 061 624 6063

SPECIALISTS IN:

- MORTGAGES
- LIFE ASSURANCE
- SELF EMPLOYED PENSIONS
- INVESTMENT ADVICE
- PERSONAL INSURANCES
- COMMERCIAL MORTGAGES

ASHTON FURNISHING

BETTER FURNITURE AT BIGGER DISCOUNTS

Furnishing Centre:
14, Market Place,
Oldham
also branches
at Stockport
Walkden
Ashton
Bury &
Sale

Schreiber Centre:
1, King Street,
Oldham
Tel: 624 2484

OLDHAM ATHLETIC

*Blue Shirts, White Shorts
White Stockings*

PETER McDONNELL
IAN WOOD
RONNIE BLAIR
GRAHAM BELL
KEITH HICKS
JOHN HURST
VIC HALOM
STEVE TAYLOR
ALAN YOUNG
LES CHAPMAN
STEVE GARDNER
To be announced

REFEREE
M. P. SCOTT
Nottingham

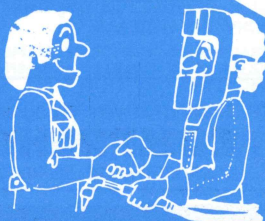
KICK-OFF 3.00 p.m.

LUTON TOWN

*Orange Shirts with White & Navy
Vertical Stripes down left side
Navy Blue Shorts
Orange Stockings with Navy Blue
& White turnover*

1 MILIJA ALEKSIC
2 MAL DONAGHY
3 MARK AIZLEWOOD
4 RICKY HILL
5 CHRIS TURNER
6 PAUL PRICE
7 ALAN WEST
8 PASQUALE FUCCILLO
9 BRIAN STEIN
10 BOB HATTON
11 DAVID MOSS
12 To be announced

LINESMEN
A. DOBSON
Red Flag
J. J. SHAWCROSS
Yellow Flag



For a job 'weld' done

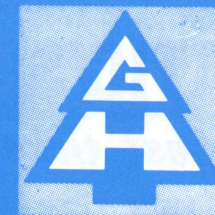
always get your equipment from

**THOMAS A. METCALFE
LIMITED**

SUPPLIERS OF WELDING
& CUTTING EQUIPMENT

MARKET STREET, DROYLSDEN
MANCHESTER M35 7DJ

TELEPHONE:
061-370 8611 (10 lines)



Tel. 061-652 7421

GEORGE HILL (OLDHAM) LIMITED

TIMBER IMPORTERS
and MERCHANTS

Softwoods & Hardwoods — Architraves
Skirtings — Timber Mouldings
Wallboards — Doors — Plywood
Formica — Hillplas (Melamine surfaced chipboard)

SCOTTFIELD SAWMILLS
ASHTON ROAD, OLDHAM OL8 1LB
and at
GLEBELANDS ROAD, SALE
Tel: 061-969 7543

F.D. WHITEHEAD BUILDING SERVICES LTD.

OLDHAM

COMPLETE DESIGN
BUILDING & FURNISHING
SERVICE

SPECIALISTS IN ALL TYPES
OF CLUB BUILDING WORK

Tel: 061 624 9737/3343.

LATIC'S CASH BONANZA

The best ticket money can buy
Support your club — buy from the following
vendors in your area
ON SALE NOW!

**ONLY
20p**

R. Kenny
J. Scholes
S. Woodward

Mr. Blackledge
Mr. Guest
Mrs. Verity
Mr. Butler
Messrs. Brennan
Messrs. Hegarty
Mr./Mrs. Taylor
Mr. Hall
Mrs. Dewhurst
Mr./Mrs. Andrews
F. B. Ripley

Mr. Beaman
Yates
E. Standing
Mr./Mrs. Gallagher
J. Bailey
H. William

L. Surridge
G. Bennett
E. Cook
L. O'Reilly
Haigh/Ottley
K. Halford
Sutcliffe/Dyson
S. J. McArdie
Mr. Sherlock
B. Lloyd
J. Hardacre

25 Turf Lane, Chadderton
131 Turf Lane, Chadderton
131 Long Lane, Chadderton
480 Broadway, Chadderton
99 Balfour Street, Oldham
11 Gainsborough Avenue, Coppice
282 Copsterhill Road, Oldham
14 Middleton Road, Royton
151 Oldham Road, Royton
740 Oldham Road, Failsworth
118 Union Street, Oldham
1/2 Eldon Precinct, Oldham
(Bob Shop), Lee Street, Oldham
High Street, Lees
(Bob Shop), 145/7 Roundthorn Road
Oldham
2 Pittsies Lane, Abbeyhills
(Bob Shop) 369 Ripponden Road, Oldham
184 Greenacres Road, Oldham
(Sweets), Bus Terminus, Waterhead
(Sweets), 9 Ripponden Road, Oldham
(Post Office), 166 Middleton Road,
Oldham
(Sweets), 248 Oldham Road, Middleton
106 Northfield Road, New Moston
50 Northfield Road, New Moston
264 Broadway, Chadderton
703 Middleton Road, Chadderton
203 Manchester Road, Hollinwood
803 Huddersfield Road, Oldham
175 Stamford Road, Lees
52 Huddersfield Road, Oldham
827 Hollins Road, Oldham
197 Manchester Road, Hollinwood

C. J. Sharples
J. Rainford
Messrs. Minard
Messrs. Rutherford
L./P. Heath
A. Milne
J. T./H. M. Wild
H./E. Lees
P. Wild
Messrs. Wood
V. Hall
S. Haines
Mrs. Barber
Atkin (Jeans)
J. Shaw

"Headline"
A. Jowett
Woods Chemist
Woods Chemist
Messrs. Taffer
Messrs. Wilson
R. Sutton
Messrs. Ivell
Messrs. Taylor
Messrs. Sagar
Messrs. Wilson
Messrs. Brooks
Mrs. Heverin
Mrs. Marland
Mrs. Ince
Mrs. Oyston
Herb Shop
C. Fletcher

104 Eaves Lane, Chadderton
51 Oxford Street, Werneth
239 Ripponden Road, Oldham
Limeside Post Office, Hollinwood
235 Hollins Road, Hollins
624 Ashton Road, Oldham
226 Ashton Road, Oldham
156 Ashton Road, Oldham
352 Burnley Lane, Chadderton
228 Oldham Road, Failsworth
142 Eldon Precinct, Ashton Road
21 Thatcher Street, Oldham
85 Robinson Street, Chadderton
8 Kent Avenue, Chadderton
Crown Inn, Walsh Street, Chadderton
Windmill Hotel, Lord Lane, Failsworth
92 Alder Road, Failsworth
4 Oak Road, Hollinwood
265 Ripponden Road, Oldham
236 Ripponden Road, Oldham
378 Hollins Road, Oldham
732 Hollins Road, Oldham
489 Manchester Road, Oldham
318 Oldham Road, Failsworth
109 Featherstall Road South, Oldham
83 Burnley Lane, Chadderton
22 Market Street, Shaw
81 High Street, Lees, Oldham
471 Rochdale Road, Oldham
278 Abbotsford Road, Derker
271 Featherstall Road, Oldham
84 Godwick Road, Oldham
Broadway, Chadderton
737 Hollins Road, Hollinwood

Compare this ticket with any other on sale — this is the best. Support "Latics", your team, in a practical way and win money.

Promoter: J. Douglas, Oldham Athletic A.F.C. Development Association, Boundary Park, Oldham. 061-652 0966

WILLOUGHBY'S

98-100 BROADWAY . CHADDERTON

061.620-1374

Manchesters oldest
WINE & SPIRIT MERCHANTS

with the modern approach to prices
but with years of experience in quality wines.

KNOW THE GAME



- The ball goes directly into the opposing goal from an indirect free-kick. What should be the referee's decision?
- Where most opposing players stand when a player is taking a free-kick from inside his own penalty-area?
- What is the referee's decision in these circumstances?
 - A player takes a free-kick inside his own penalty-area and kicks it to the goalkeeper standing in his own penalty-area who picks it up and clears it up field.
 - As a player takes a free-kick, two opposing players wave their arms and shout 'He will miss it'.
 - A player takes a penalty-kick. The ball hits the crossbar and rebounds to the kicker who kicks the ball a second time.
 - The goalkeeper moves his feet just before a penalty-kick is taken and the ball goes into the goal.
 - Before the penalty-kick is taken one of the attacking side enters the penalty area. The ball goes straight into goal.
 - Players of both sides enter the penalty-area before the ball is in play from a penalty-kick.
- Play has been extended for a penalty-kick to be taken. After the kick the goalkeeper stops the ball which rebounds to an attacker who kicks it into goal. Should the referee allow the goal?
- Play has been extended for a penalty. The goalkeeper half stops the ball but it rolls past him over the goal-line. Should the referee allow the goal?

- Goal-kick.
- Outside the penalty-area and at least 10 yards from the ball.
- Re-take the kick
 - Caution the players for ungentlemanly conduct
 - Indirect free-kick
 - Allow the goal
 - Re-take the kick
- Re-take the kick
 - Re-take the kick
- Yes.

PAKAMAC Ltd

PAKAMAC HOUSE · MIDDLETON ROAD · CHADDERTON
 OLDHAM · Telephone: 061 652 5111

Seton

SETON GROUP OF COMPANIES
 Tubiton House · Medlock Street · Oldham
 SUPPLIERS TO O.A.F.C.
 MEDICAL REQUISITES

LATICS FIXTURES

1978	F A
Aug. 19—LUTON TOWN	A 1-6
Aug. 22—BRISTOL ROVERS	H 3-1
Aug. 26—CARDIFF CITY	A 3-1
Aug. 29—NOTTM. FOR. LC2	H 0-0
Sept. 2—STOKE CITY	H 1-1
Sept. 4—NOTTM. FOR. Rep.	A 2-4
Sept. 9—BRIGHTON	A 0-1
Sept. 13—MORTON (A.S.C.)	A 0-3
Sépt. 16—PRESTON N.E.	H 2-0
Sept. 23—CRYSTAL PALACE	A 0-1
Sept. 26—MORTON (A.S.C.)	H 4-0
Sept. 30—FULHAM	H 0-2
Oct. 7—BURNLEY	A 0-1
Oct. 14—WEST HAM	H 2-2
Oct. 17—ST. MIRREN (A.S.C.)	H 1-1
Oct. 21—SHEFFIELD UTD.	A 2-4
Oct. 28—SUNDERLAND	H 0-0
Oct. 31—ST. MIRREN ASC S.F.	A 4-2
1-1 after extra time. Oldham win on penalties.	
Nov. 4—MILLWALL	A 3-2
Nov. 8—LEAGUE CUP 4	
Nov. 11—LUTON TOWN	H
Nov. 18—CARDIFF CITY	H
Nov. 22—STOKE CITY	A
Nov. 25—NEWCASTLE U. (1)	A
Dec. 2—WREXHAM	H
Dec. 9—CAMBRIDGE U.	A
Dec. 13—LEAGUE CUP 5	
Dec. 16—ORIENT (2)	H
Dec. 23—BLACKBURN R.	A
Dec. 26—NOTTS. COUNTY	H
Dec. 30—CHARLTON A.	H
1979	
Jan. 1—LEICESTER CITY	A
Jan. 6—F.A. CUP 3	
Jan. 13—BRIGHTON	H
Jan. 17—LEAGUE CUP SF	
Jan. 20—PRESTON N.E.	A
Jan. 24—LEAGUE CUP SF	
Jan. 27—F.A. CUP 4	
Feb. 3—CRYSTAL PALACE	H
Feb. 10—FULHAM	A
Feb. 17—BURNLEY (5)	H
Feb. 24—WEST HAM	A
Mar. 3—SHEFFIELD U.	H

Mar. 10—SUNDERLAND (6)	A
Mar. 17—MILLWALL (LCF)	H
Mar. 24—BRISTOL ROVERS	A
Mar. 31—NEWCASTLE U. (SF)	H
April 7—WREXHAM	A
April 13—BLACKBURN R.	H
April 14—NOTTS. COUNTY	A
April 16—LEICESTER CITY	H
April 21—ORIENT	A
April 28—CAMBRIDGE U.	H
May 5—CHARLTON A.	A
May 12—F.A. CUP FINAL	

Copyright of the Football League Ltd.

and not to be reproduced without permission

DIVISION TWO TABLE

	P	W	D	L	F	A	Pts.
Stoke	13	8	4	1	18	9	20
West Ham	13	7	3	3	27	14	17
Crystal Palace	13	6	5	2	20	11	17
Bristol Rovers	13	7	2	4	22	17	16
Charlton	13	6	4	3	22	13	16
Burnley	13	6	4	3	20	18	16
Fulham	13	7	2	4	17	13	16
Brighton	13	6	2	5	21	18	14
Wrexham	13	4	6	3	12	9	14
Sunderland	13	5	4	4	16	17	14
Newcastle	13	5	4	4	13	14	14
Luton	13	5	3	5	29	15	13
Notts. County	13	5	3	5	17	25	13
Cambridge	13	3	6	4	11	11	12
Sheffield U.	13	4	3	6	18	19	11
OLDHAM A.	13	4	3	6	17	22	11
Leicester	13	3	5	5	10	12	11
Orient	13	4	2	7	14	17	10
Cardiff	13	4	2	7	17	31	10
Blackburn	13	3	4	6	14	21	10
Preston	13	1	4	8	18	30	6
Millwall	13	1	3	9	9	26	5

Man in the Middle

MARK P. SCOTT (Nottingham): Started refereeing in 1965. Joined the Football League in 1975 via the East Midland and North Midland Leagues. He is interested in all sports, enjoys playing badminton and swimming. Keeps fit for refereeing by running and weight training. Played cricket and football at County level whilst at school. He is Security Officer with a security firm and is married with three daughters.

RESERVE FIXTURES

1978	
Aug. 19—STOCKPORT C. 'A'	H
Aug. 26—CREWE ALEX. 'A'	H
Sept. 2—MACCLESFIELD T.	A
Sept. 9—CARLISLE U.	H
Sept. 16—BRADFORD C.	A
Sept. 23—ROCHDALE	H
Sept. 30—CHESTER 'A'	A
Oct. 7—MACCLESFIELD T.	H
Oct. 14—CREWE ALEX. 'A'	A
Oct. 21—MORECAMBE	H
Oct. 28—MANCHESTER C. 'A'	A
Nov. 4—SOUTHPORT	H
Nov. 11—LIVERPOOL 'A'	A
Nov. 18—CARLISLE U.	A
Nov. 25—TRANMERE R.	H
Dec. 2—PORT VALE	A
Dec. 9—WREXHAM	H
Dec. 15—STOCKPORT C. 'A'	A
Dec. 30—BLACKPOOL 'A'	A
1979	
Jan. 1—WIGAN ATH.	A
Jan. 6—CHESTER 'A'	H
Jan. 13—ROCHDALE	A
Jan. 20—BRADFORD C.	H
Jan. 27—SOUTHPORT	A
Feb. 2—TRANMERE R.	A
Feb. 10—LIVERPOOL 'A'	H
Feb. 17—BOLTON W. 'B'	A
Feb. 24—WIGAN ATH.	H
Mar. 3—EVERTON 'A'	A
Mar. 10—PORT VALE	H
Mar. 17—WREXHAM	A
Mar. 24—MANCHESTER C. 'A'	H
Mar. 31—MORECAMBE	A
April 7—BOLTON W. 'B'	H
April 14—EVERTON 'A'	H
April 21—BLACKPOOL 'A'	H
April 28—MANCHESTER U. 'A'	A
May 5—MANCHESTER U. 'A'	H

Half-time Scores

DIVISION ONE

BIRMINGHAM C. v. MANCHESTER U.	...
BRISTOL C. v. BOLTON W.	...
COVENTRY C. v. MIDDLESBROUGH	...
EVERTON v. CHELSEA	...
IPSWICH TOWN v. WEST BROM	...
LEEDS U. v. ARSENAL	...
MANCHESTER C. v. DERBY COUNTY	...
Q.P.R. v. LIVERPOOL	...
SOUTHAMPTON v. NORWICH C.	...
TOTTENHAM v. NOTTM. FOREST	...
WOLVES v. ASTON VILLA	...

DIVISION TWO

BRIGHTON v. WREXHAM	...
CHARLTON A. v. SUNDERLAND	...
CRYSTAL PAL. v. BLACKBURN R.	...
LEICESTER CITY v. BURNLEY	...
NEWCASTLE UNITED v. MILLWALL	...
NOTTS. COUNTY v. WEST HAM	...
ORIENT v. SHEFFIELD U.	...
PRESTON v. CARDIFF CITY	...
STOKE CITY v. CAMBRIDGE U.	...

BURY v. SWANSEA CITY	...
ROCHDALE v. PORT VALE	...
WIMBLEDON v. STOCKPORT C.	...

NEXT HOME FIXTURES:

Saturday, 18th November — Kick-off 3.00 p.m.
CARDIFF CITY
Saturday, 25th November — Kick-off 2.30 p.m.
TRANMERE ROVERS RESERVES

PROGRAMME FAIR

By popular request a Programme Fair will be held at the O.A.A.F.C., Boundary Club, Furtherwood Road, Oldham on Sunday 12th November 1978 at 10.30 a.m. to 1.00 p.m. Admission 15p.

SEASON TICKET PRICES from 11th November 1978

Private Box	£46.40	Enclosures	£15.70
Centre Stand	£25.00	do Senior Citizen	£9.30
Wing Stand	£19.30	Schoolchild	
do Senior Citizen	£12.85	Chadderton Stand	£13.60
Schoolchild		do Senior Citizen	£7.15
Ford Stand	£23.60	Schoolchild	
		Car Park	£2.10

PENNINE PETROLEUM PRODUCTS

Authorised
Distributors



67 UNION STREET · OLDHAM
Telephone: 061-624 1332 (Depot)
061-624 4489 (Accounts)

Royton Electrical Services

Tel: Shaw 47773
THE BEST BY ANY TEST WE
SCORE. AND WIN BY
50 YEARS OF EXPERIENCE

★ SPORTS REQUIREMENTS GILBERTS

WATER LANE, WILMSLOW
Telephone: 29221/2
Bramhall Centre - Bramhall
Telephone: 439 7394

Suppliers of kit to leading teams
including OLDHAM ATHLETIC

WATSON'S STORES

Pay a visit to Lancashire's leading
Carpet Specialists and safeguard
your own interests by comparing
our prices and qualities.

FIRST-CLASS FITTING SERVICE

Estimates Free

Any Distance

NO "FREE" GIFTS OR GIMMICKS
GLODWICK ROAD · OLDHAM
Telephone: 061-633 2461



MALCOLM CLARKE (STEEL) HOLLINWOOD LIMITED

specialists in steel plate stock holding

De-coiled sheets $\frac{1}{8}$ "- $\frac{1}{2}$ " thick
BS 4360-43A, BS 4360-50B, BS 1501-151-28A
 $\frac{3}{16}$ "-10" thick. Quotations for shearing & profiling
available. Also bulk buyers of works-surplus parcels

UNIT 1, VICTORIA TRADING ESTATE, DRURY LANE,
HOLLINWOOD, OLDHAM OL9 7PJ, LANCASHIRE
Telephone: 061 682 7280 & 061 681 8899

CENTRAL GARAGE
(ROYTON) LIMITED
OLDHAM ROAD, ROYTON
M.O.T. Testing Station
Phone 624 1390/1510

J. KERSHAW
(OLDHAM) LIMITED
SUMMIT GARAGE, ROYTON
For Deliveries to the London
area, phone 624 1390/1510

SUMMIT GARAGE
LIMITED
ROYTON
For steam cleaning your car
Phone 624 4237

THE FAMILY FAVOURITE



Bakers of Good Bread

IDEAL BAKERY (Shaw) LIMITED
SHAW · OLDHAM OL2 7SF · LANCs
Telephone: Shaw 47744

There's a John Willie Lees House near your house serving traditional draught beer...

Albion Inn, Hollinwood, Oldham
 Angel Inn, Royton, Nr. Oldham
 Assheton Arms Hotel, Middleton
 Bank Top Tavern, Oldham
 Black Horse Hotel, Shaw, Nr. Oldham
 Black Swan Hotel, Mumps, Oldham
 Blue Pits Inn, Castleton, Rochdale
 Boarshaw Hotel, Middleton
 Boat & Horses, Broadway, Chadderton
 Bradshaw Fold, Middleton Junction
 Boundary Inn, Oldham
 Bowling Green Inn, Hollinwood, Oldham
 Bridge Inn, Oldham
 Britannia Inn, Middleton
 Carters Arms, Rhodes, Middleton
 Commercial Hotel, Oldham
 Cotton Tree Inn, Middleton
 Crawford Arms, Rochdale
 Cross Keys Inn, Uppermill, Saddleworth
 Crown & Shuttle Inn, Firgrove, Rochdale
 Crown Inn, Middleton
 Dicken Green Hotel, Rochdale
 Dog & Partridge Inn, Ashton-under-Lyne
 Dog & Partridge Inn, Oldham
 Dog & Partridge Inn, Royton, Nr. Oldham
 Duke of York Inn, Royton, Nr. Oldham
 Falconers Arms, Hollins, Oldham
 Firwood Tavern, Middleton Junction
 Farmers Arms, Prestwich, Manchester
 Free Trade Tavern, Milnrow, Rochdale
 The Pollard, Ancoats, Manchester
 Gardeners Arms, Middleton
 Gardeners Arms, Middleton Junction
 Golden Pheasant Inn, Knutsford, Cheshire
 Greyhorse Inn, Failsworth, Manchester
 Greyhound Inn, Royton, Oldham
 Grosvenor Arms, Newton Heath, Manchester
 The Greengate, Limeside, Oldham
 Halfway House, Royton, Nr. Oldham
 Hare & Hounds Hotel, Chadderton, Oldham
 Hare & Hounds Hotel, Higginshaw
 Hare & Hounds Hotel, Middleton
 Hollins Bush Inn, Bury, Lancs.
 Horton Arms, Chadderton, Oldham
 Highland Laddie, Rochdale
 Hunt Lane Tavern, Chadderton, Oldham
 The Haggate, Royton, Nr. Oldham
 John Willie Lees, Arndale Centre, Manchester
 The Jolly Butcher, Baguley, Wythenshawe
 Jolly Carter Hotel, Middleton
 Junction Inn, Denshaw, Saddleworth
 Junction Inn, Middleton Junction
 Lancashire Fold, Alkington, Middleton
 Lord Clive, Whitefield, Manchester
 Middleton Archer, Middleton
 Morning Star Inn, Shaw
 Minders Arms, Middleton Junction
 The Nowster, Middleton
 Old Cock Inn, Middleton
 The Park, Wythenshawe, Manchester
 Pack Horse Inn, Birtle, Nr. Bury
 Plough Inn, Oldham

Puckersley Inn, Royton, Nr. Oldham
 Radclyffe Arms, Oldham
 Railway & Linnet, Middleton Junction
 Railway Hotel, Royton, Nr. Oldham
 The Rembrandt, Manchester
 Rifle Range Inn, Chadderton, Oldham
 Ring O'Bells, Middleton
 Rose of Lancaster, Chadderton, Oldham
 Royal Oak Hotel, Middleton
 Same Yet Inn, Prestwich, Manchester
 Ship Inn, Slattocks, Middleton
 Spinners Arms, Springhead, Nr. Oldham
 Spread Eagle Hotel, Lymm, Cheshire
 Spring Inn, Rochdale
 Suburban Hotel, Gorton, Manchester
 Success to the Plough, Marland, Rochdale
 Tandle Hill Tavern, Slattocks, Middleton
 Three Arrows Inn, Heywood
 Travellers Call, Bredbury, Stockport
 Waggon & Horses, Rochdale
 Weavers Arms, Rochdale
 The White Grouse, Flaie, France
 Wellfield Inn, Rochdale
 White Hart Inn, Middleton
 Who'd a Thowt It, Middleton
 Woodhouse Gardens, Woodhouses, Failsworth
 Woodman Inn, Hollinwood, Nr. Oldham
 Weavers Arms, Oldham
 Albion Vaults, Wrexham
 Anglesey Arms Hotel, Anglesey
 Bee Hotel, Abergele
 Black Lion Inn, Newbridge, Nr. Wrexham
 Britannia Inn, Halkyn, Flint
 Bull Inn, Llanbedr-y-Cennin, Conway
 Bull Hotel, Abergele
 Bull Bay Hotel, Amlwch, Anglesey
 Crown Hotel, Llandegla, Nr. Wrexham
 Crown Hotel, Llanfihangel, G.M. Nr. Corwen
 Dulas Arms, Llandulas, Nr. Abergele
 Eagles Hotel, Penmachno, Nr. Bettws-y-Coed
 Glanrafon Hotel, Anglesey
 George & Dragon, Brymbo, Nr. Wrexham
 Grouse Inn, Carrog, Nr. Corwen
 Holland Hotel, Holyhead, Anglesey
 Holland Arms, Hotel, Gaerwen, Anglesey
 Holland Hotel, Llanfachreath, Anglesey
 Imperial Hotel, Colwyn Bay
 Links Hotel, Llandudno
 Maelon Lake Hotel, Rhosneigr, Anglesey
 New Inn, St. Asaph, Flint
 Old Vaults, Denbigh
 Owain Glyndwr Hotel, Corwen, Merioneth
 Railway Inn, Llangefni, Anglesey
 Red Lion Hotel, Gyffliog, Nr. Ruthin
 Red Lion Hotel, Llansannan, Nr. Denbigh
 Red Lion Inn, Tyn-y-Groes, Nr. Conway
 Sportsman Arms, Bylchau, Nr. Denbigh
 Trearddur Bay Hotel, Anglesey
 Twrcyhelun Arms, Llanerchymedd, Anglesey
 Ty Gwyn Hotel, Roewen, Nr. Conway
 White Lion Hotel, Cerrig-y-Drudion