

# CRYSTAL PALACE

Terry Venables  
writes Pages 2 and 3

Focus on Sweden  
Pages 4 and 5

Today's line-up  
Page 16







President: A.J. Wait

Directors:

R.E. Bloye (Chairman)  
R.S. Briggs A.G. Broughton  
F.C. Buckley N.H. Hunt O.B.E.,  
C.D. Richards S. Stephenson  
E.J. Swann R.R. Valey  
J.C. Williams

Manager:  
Terry Venables

Secretary:  
Alan Leather

Commercial Manager:  
Tony Shaw

Honorary Medical Officers:  
Dr. J.P. Reid M.B. Ch.B. (Glas)  
Dr. E.A.M. Tuck

Physiotherapist:  
C. Simpson M.S.P.

Crystal Palace  
Football Programme Editor:  
Tony Shaw

Produced and designed by  
Midland Sports Magazines

Printed by  
Ward & Woolverton Limited

All Contents Copyright

# Terry Venables

The lads have told me already that as far as they are concerned our pre-season preparations this year were the most demanding they have experienced — which pleased me because it was my intention to step up the training and ask more of the youngsters in our squad.

After all, they are a year older and have 12 months more maturity both mentally and physically. But they showed me, first in Corfu and then in Sweden that they can take it and the experience they have already gathered will prove invaluable now they are stronger in the body. We won both of our games in Corfu and in one of them Jerry Murphy scored one of the best goals I have ever seen. And so, on to Sweden where we met sides from their Second Division. Whilst the standard of their Second Division may not be as high as ours they still compete just as enthusiastically.

These matches gave me the opportunity of seeing how two of our newcomers Mickey Elwiss and Terry Boyle would slot in and I must say that it was most promising the way they adapted to our style of play. I managed to get Boyle on a free transfer from Spurs but had to pay £180,000 to Preston for Elwiss.

Some people might say that is a lot of money to pay for a man who scored only 11 League goals last season. But there's far more to this player than just scoring goals, and in any event whenever you go into the transfer market nowadays you find yourself talking in telephone numbers.

There are some strikers who are purely and simply that. Bottle them up the best way you can and their overall contribution to the game is negligible. But Mickey is not one of these types. He is the kind of player whose involvement is total. He can score goals and — to me what is just as important — he can create chances for colleagues.

It's sometimes said that all the great finishers have been very selfish people. I don't go along with that all the way because for me the man who is prepared to graft and take on responsibility throughout a full 90 minutes and assist his colleagues is a far better proposition.

Mickey is a good target man up front. He finds space and worries the opposing defence and I think that he is going to prove an ideal fellow of whom our other strikers and midfield men can feed. Already I am impressed with the understanding he has established with David Swindlehurst, Ian Walsh and Vince Hilaire.

I am looking for more goals all round and because Elwiss is a sound all round player I think he will add a new dimension to our scoring potential. He cost £180,000 but I have been able to balance the books.

Rachid Harkouk went for a six figure fee and Steve Brennan brought us in another £25,000 so you can see that we are very little adrift on the expenditure side. I know you are going to appreciate the skills of these newcomers.

I think my biggest disappointment of the summer was the number of managers who turned up to attend Ron Greenwood's World Cup analysis. Surely the absentees were not naive enough to believe that there was nothing for us to learn from the matches in Argentina?

But I feel that those who did attend will profit from their interest. It is very much a case of one man's gain being another's loss. For if we are to compete with the rest of the world we cannot afford to be insular.

At the same time I shall be watching with interest how the recent 'imports' fare in our League. I reserve judgement on them until time has elapsed and will only say that at the moment I personally prefer to 'Buy British'.

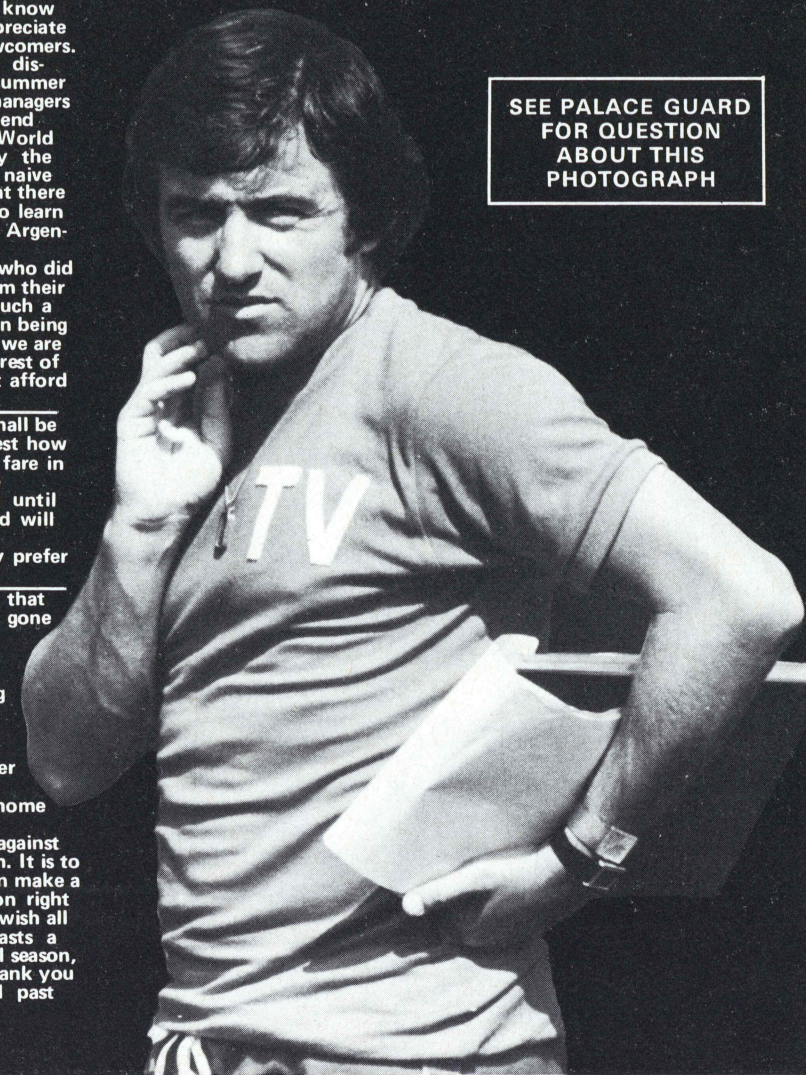
That is not to say that the clubs who have gone into the foreign market are wrong.

Time alone will tell.

But unless something special came along I think I would still concentrate on our own domestic transfer market.

We start off our home season with two attractive fixtures against Luton and West Ham. It is to be hoped that we can make a favourable impression right from the start and I wish all you Palace enthusiasts a happy and successful season, and would like to thank you for your continued past support.

SEE PALACE GUARD  
FOR QUESTION  
ABOUT THIS  
PHOTOGRAPH





*Our club photographer Neil Everitt accompanied the team on their recent Swedish tour, taking pictures of virtually everything that moved and also taking notes so that he could give Palace enthusiasts the inside story of what transpired. Here is his diary:*

**Monday July 24th:** The party assembled at the ground and left for Stanstead Airport where we caught a jet at 2.00 p.m. destined for Borlange. We arrived there at 4.30 p.m. and went straight to the Hotel Siljansnas which took us about an hour. We shared the plane and the hotel with Millwall and Wrexham and all of us were playing against different Swedish sides. The hotel was on top of a hill overlooking a lake with the nearest town an hour away. It was an ideal training camp for the lads.

**Tuesday July 25th:** Training started at 9.30 a.m. and even though we had a match that evening the lads went through a rigorous 90 minute session. Back to the hotel for lunch and then off to meet Sandviken, whom we beat 3-0 with Dave Swindlehurst, Jerry Murphy and Mike Elwiss scoring the goals. A crowd of 1,600 watched the match.

**Wednesday 26th:** The team assembled at 10.30 a.m. and had their first taste of one of several cross country runs which were around the H.Q. and in the afternoon came another one and a half hour training session. Wrexham were playing nearby that evening and we went along to lend our moral support.

**Thursday 27th:** Once again training in the morning and then off to play Brage Borlange who were on top of the world, having finished second in the Swedish Second Division. But we beat them 3-1 with our goals coming from Nicholas, Hilaire and Swindlehurst. Apart from our four faithful supporters another three came over from Norway and went back the same day.

There was a dinner dance afterwards which we all enjoyed. What was unusual was how light it stayed for this is a country affected by the midnight sun and also the temperatures during the day were generally well into the 80's.



## SWEDEN

**Friday 28th:** Morning and afternoon training — phew! In the evening Terry had brought some video cassettes of the world cup so we had a film show followed by a team discussion.

**Saturday 29th:** Training morning and afternoon — phew!

**Sunday 30th:** A cross country run — phew! Afternoon off. (Who said thank goodness?)

**Monday 31st:** Training first and then off to meet Brommapofkarna whom we beat 4-0. We were 3-0 up at half time and won comfortably with the match being held up for a while when a woman strayed onto the pitch. No-one knew why. Afterwards we were given sandwiches and most of these were handed over to our four faithful enthusiasts.

**Tuesday August 1st:** A rest day with more video viewing.

**Wednesday 2nd:** Shopping in Borlange.

**Thursday 3rd:** Light training then a 1-0 win over Iksirius with Dave Swindlehurst getting the decider in the 10th minute.

**Friday 4th:** Farewell. We left the hotel at 10 a.m. and arrived back at Selhurst at 4.0 p.m. Throughout the trip Palace had played to crowds between 1,600 and 2,000 while Millwall and Wrexham averaged about 500 apiece. What really impressed me was the attitude of the Swedish fans. They really showed their appreciation of good football and while obviously wanting their own side to win were eminently fair in their assessment of the way we played.





# LUTON TOWN



Few managers in football can have been thrust into their jobs more dramatically than Luton's boss David Pleat. As a player he had played on the wing for England Youth and Nottingham Forest, and then had three seasons with Luton. Injuries affected his career as he moved on to Shrewsbury, Exeter and Peterborough, but he took FA coaching courses to stay in the game, and tried his hand at management with Nuneaton, in the Southern League.

In 1975 Luton hired him for the second time in his life, to be coach to the reserve side and events really moved rapidly a couple of years later. In December 1975 Luton's first team coach Roy McCrohan left to take a job in the USA, and Mr. Pleat moved up into his job.

Within two months Luton lost manager Harry Haslam to Sheffield United, and asked Pleat to take charge.

At 33 he was one of the youngest managers in the league, but within six months he had shown his intentions of re-building the Luton side. Last season, after a good start, they slipped to within a point of the relegation zone, and Pleat's answer was to carry out the biggest shake-up of players anyone at Kenilworth Road can remember. His transfer turnover approached £900,000 in eight months, with four players sold and nine new faces introduced.

**MILIJA ALEKSIC:** Luton snapped up a bargain when Aleksic was made available by Plymouth in January 1977. He was unsettled in the West Country, and the transfer was the turning point in his career. He has been first choice ever



MILIJA ALEKSIC

since, and Luton supporters have nicknamed him "Elastic", and it pays due tribute to his agility and reflexes. Son of Yugoslav parents, but born in the North of England.

**PAUL PRICE:** Luton's longest-serving player, he has been a model professional since being recruited from youth soccer in 1971. On the verge of the league scene in 1974, he broke his leg. He fought his way back to fitness, only to break it for the second time. But the second come-back was permanent, and Price has been a regular member of Luton's side for the past three years.

**JIM McNICHOL:** Ipswich decided that this Scottish-born defender was surplus to requirements when he completed his apprenticeship at Portman Road in the summer of 1976. Luton acted quickly to sign him, and he has been a loyal member of their squad ever since with the ability to play anywhere at the back.

**DAVID CARR:** Spotted by a Luton scout near his home town of Margate, full-back Carr joined Luton when he left school at 16 in 1973. Can play equally well in the back four or in midfield, but made his major breakthrough last season when he made the left back position his own.

**GRAHAM JONES:** Recruited from Manchester schools football at the age of 16 in 1975, Jones turned out to be a highly versatile player. He made rapid strides through Luton's lower teams, and made his league debut at 17. He started as a centre-half, but has also sampled a midfield role in the Second division, and seems equally at home in either department.

**STEVE SHERLOCK:** Passed his football apprenticeship with Manchester City, and in 80 Central League games for them was being watched carefully by a number of clubs. Scottish international Willie Donachie kept Sherlock out of the Maine Road limelight, and Luton stepped in for his signature when City allowed him to leave in May 1978.

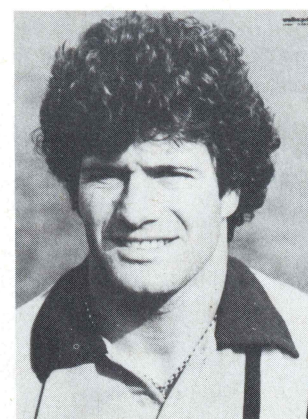
**MARK AIZLEWOOD:** David Pleat's confidence in this stylish defence or midfield player was backed dramatically in April 1978. Luton splashed out £50,000 to bring him out of the Fourth Division, where he was playing for Newport County, when he was still only 18. A former Welsh Youth international skipper.

**MAL DONAGHY:** Glasgow Celtic, Queen's Park Rangers, Sheffield United and Wolves were all reported to be interested in the future of this Eire Under-21 international in the summer of 1978. But Luton were first off the mark, and secured his transfer from Larne, and manager Pleat rates this centre-half one of the best young players to come into the English game.

**CHRIS TURNER:** Luton fought off rival overtures from First Division Norwich to secure



PASQUALE FUCCILLO



PHIL BOERSMA



RICKY HILL

the services of this accomplished defender, who had been a mainstay at Peterborough for nine seasons. Luton boss Pleat was once a playing colleague of Turner's at Peterborough, had him watched in the 1977/78 season, and then laid out £95,000 for his signature.

**PASQUALE FUCCILLO:** Son of Italian parents who settled at Bedford, midfield dynamo Fuccillo — "Lil" to his friends and the Luton fans — supplies a lot of Luton's midfield attacking drive. Signed as a 16-year-old apprentice in the summer of 1973, he broke through into the League side within three years, and his power and regular goals have kept him in the side ever since.

**ALAN WEST:** A brilliant creative player in midfield, West was one of the many young stars to come from Burnley. An England Under-23 international, he moved to Luton in October 1973 for £100,000, and is still one of the best long-ball passers in the game today.

**RICKY HILL:** A midfield player of immense talent, Hill was signed as an apprentice from schoolboy football in North London as a 16-year-old, and within a year his delicate ball skills and explosive shooting had earned him his place in Luton's league side while still only 17. Now 20, he has been capped by England at youth level.

**JOHN LUCAS:** Luton thought they had missed out when midfielder Lucas, a Welsh schoolboy international, turned down their approaches when he left school at 16. He went to Manchester United instead, but within a year, in June 1978, he decided that his prospects might after all be better elsewhere — and Luton got their man after all.

**PHIL BOERSMA:** Luton had to wait three years before landing an attacker they had long respected. In 1974 they tried to buy him from Liverpool, but the bid was rejected. Later Boersma joined Middlesbrough, but had an unsettled 18 months there, and in the summer of 1977 he moved to Luton for a bargain fee of £35,000. He was their joint leading scorer last season.

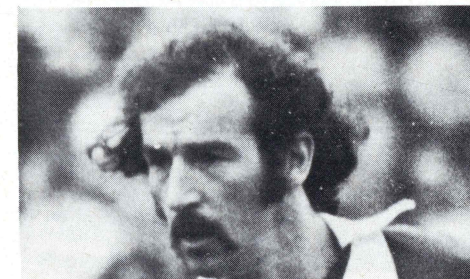
**GODFREY INGRAM:** A product of Luton's schoolboy and youth teams, Ingram became a regular member of Luton's reserve side while he was still only 16. His speed and powerful shoot-

ing earned him an England Schools international cap. He became an apprentice in the summer of 1976, a junior professional within 12 months, and a member of Luton's League squad a year later.

**GARY HEALE:** Made the breakthrough into Second Division football last season after being with Luton since leaving school in Canvey Island. A good target man in attack, he decided to give his chance with Luton despite approaches from Tottenham, and marked his league debut with a goal. But the highlight of his career so far was when he scored twice at Old Trafford last season, when Luton took Manchester City to a second replay in the Football League Cup.

**DAVID MOSS:** Respected throughout the game as a model clubman. He gave sterling service to Swindon in the Third Division before moving up a division last summer. He was their leading scorer, and Luton liked his pace and accuracy. His £110,000 transfer was a major part of David Pleat's re-building operation in the 1978 close season.

**BOB HATTON:** One of the most experienced strikers in the game, Luton moved quickly to secure the signature of Hatton in the close season. He had proved that he could score goals in any League in service with Birmingham, Carlisle and Blackpool, and his disappointment at Blackpool's relegation to the Third Division was cancelled out when Luton's £50,000 cheque took him back up to the Second.



BOB HATTON





One-two-three-four..... no, I don't expect you to step out in the style of the youngsters above but it's a very warm welcome back from us all here at Selhurst Park.

I'm sure we are all hoping for an exciting season with our young team making a bid for promotion back to the First Division.

Last season which was our first one back in Division II, was one of consolidation and the experience that we gained should be of great help to us this coming 10 months.

**A Special Guard welcome should be issued to Mike Elwiss, our £180,000 close season capture from Preston North End. There is a special feature on Mike in Focus on Pages four and five of our new style programme on Saturday.**

During the close season we had two successful club tours — to Corfu in May and Sweden in July and early August. This second trip was specially reported for our fans by Palace photographer Neil Everitt who accompanied the team. Read Neil's comments and some of his pictures in today's and Saturday's programmes.

Talking of programmes, we hope that you are all impressed with our new style production. Regular Palace Guard members will know that Programme Editor Tony Shaw and the Producers, Midland Sports Magazines always manage to give a new

style to the Palace issue and I think they have come up with a winner again.

Tony tells me he intends to print 20 pages regularly but from time to time he will arrange an extra four pages for the same price of 20p. This cannot be bad value and the first 24 page programme will be on Saturday for our important local derby game against West Ham.

#### TODAY'S COMPETITION

This will concern the new Palace programme in that you will see on page three in Terry Venables column a photograph in which he can be seen wearing two watches on his wrist. Now my question is this: Can you give me a reason why he should be wearing two? The best reply in my opinion — and Terry's — will earn the sender one of our new products from our Souvenir shop. But I will stress that it is the best and not the correct answer which will earn the prize.

#### CALLING THE YOUNG LADIES!

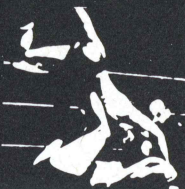
Our young lady members may be interested in a letter received by Tony Shaw during the close season from Dawn Usher, 27 Hepworth Rd., Streatham, stating that she is a member of the Kensure Ladies football team which was formed out of the ex-Crystal Palace Ladies team founded by Sue Head.

## Dale Martin's Wrestling Spectaculars

Fairfield Croydon

Box Office 01-688 9291

Tuesday 5th Sept at 8 pm



## TYREPOINT LTD

13 SELHURST ROAD, LONDON SE25

Tel. 01-684 2567

**Tyres & Batteries at Competitive Prices**

*Expert Service on*

*Punctures - Balancing - Alignment*



DUNLOP  
DENOVO  
AGENTS

Open 8.30 - 6.00 Mon.-Sat.  
9.00 - 12.00 Sunday

Dawn states: "I know that there must be many girls who come to watch Palace who would love to form a ladies football team and as we are now organising a new team to play in the Hounslow and District Sunday League we would be happy to hear from anyone interested. Most of our team support Palace and last season we won the League and were runners up in the Cup.

Contact Dawn Usher on 764 6208.

During the next few weeks we shall be bringing you up to date with our plans for Guards meetings in the Social Club. In the meantime don't forget that your annual membership is now due and the renewal and new membership details are shown on this page.

Enjoy the game and we look forward to seeing you again on Saturday to cheer the lads on in the important match with West Ham.

### PALACE GUARD RENEWAL FORM PLEASE COMPLETE AND RETURN TO THE PALACE GUARD CLUB, CRYSTAL PALACE FOOTBALL CLUB SELHURST PARK, SOUTH NORWOOD, LONDON SE25 6PU.

NAME \_\_\_\_\_

ADDRESS \_\_\_\_\_

MEM. NO. \_\_\_\_\_

DATE \_\_\_\_\_

Please find enclosed 30p renewal subscription for season 1978-79.

### PALACE GUARD MEMBERSHIP FORM

NEW MEMBERS ONLY, PLEASE  
COMPLETE AND RETURN TO ABOVE  
ADDRESS.

NAME \_\_\_\_\_

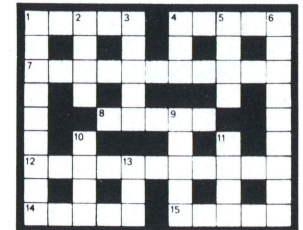
ADDRESS \_\_\_\_\_

DATE OF BIRTH \_\_\_\_\_

SCHOOL \_\_\_\_\_

FAVOURITE PLAYER \_\_\_\_\_

Please find enclosed 35p subscription for membership.



#### CLUES — Across

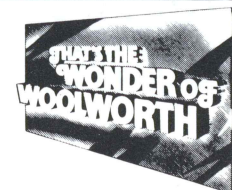
- He has captained England under Ron Greenwood (5)
- Holzenbein (Eintracht Frankfurt & West Germany) (5)
- Nominal soccer shut-down time (5,6)
- For whom Langan was their only League ever-present last season (5)
- Hull's highest League scorer last season (4,7)
- Only Group One of the World Cup finals was free of such games (5)
- One of television's World Cup panellists (5)

#### CLUES — Down

- Arsenal international (9)
- Creature in the crests of Middlesbrough and Millwall (4)
- One of the Buckley brothers (5)
- Free pass into the next round (3)
- Everton midfielder (4)
- He became manager of Portland Timbers last season (3,6)
- Footballer of the Year 1977/78 (5)
- Either of two brothers who turned out for Italy in Argentina (4)
- Plymouth's Park (4)
- 1dn. wrote a book called "....!" (3)

(Forest) 10. Sala 11. Home (Park) 13. Win.  
3. Steve 4. bye 5. Ross 6. Don McGeson 9. Burns  
SOLUTIONS — DOWN 1. Macdonald 2. lion  
14. drawn 15. Stein (BBC)  
7. close season 8. Derby 12. Alan Warboys (7)  
SOLUTIONS — Across 1. Mills (Ipswich) 4. Bernd

**For value and quality  
there's no match for  
Woolworth.**



**Wonderful Value.**

**Great Quality.**





**CRYSTAL PALACE F.C. 1st TEAM SQUAD SEASON 1978/79**

BACK ROW (Left to right): Nick Chatterton; Dave Swindlehurst; John Burridge; David Fry; Ian Walsh, Jim Cannon.

MIDDLE ROW (left to right): Dave Horn (Trainer); Ernie Walley (Coach); Alan Harris (Coach); Terry Fenwick; Paul Hinshelwood; Billy Gilbert; George Graham; Charlie Simpson (Physio); Terry Venables (Manager).

FRONT ROW (left to right): Vince Hilary; Terry Boyle; Mike Elwiss; Martin Hinshelwood; Ian Evans; Peter Nicholas; Jerry Murphy; Ken Sansom; Barry Silkman.



# Second Scene

● At the start of a new season, it seems an ideal time to be looking at the newcomers to the division. While West Ham may be fancied strongly to make an immediate bid for promotion, the other relegated clubs from last term are much more of an unknown quantity.

● **Bill McGarry**, who arrived at Newcastle when it was too late to check the headlong slide, was ready to take his **SELLING** budget towards the £1 million-mark in 1978 when he agreed on a fee of £300,000 for the transfer of left back **Alan Kennedy** to Liverpool.

Other departures include **Tommy Craig** (Aston Villa), **Alan Gowling** (Bolton), **Stewart Barrowclough** (Birmingham), **Geoff Nulty** (Everton) and **Micky Burns** (Cardiff).

Therefore, we can expect to see a completely new-look Newcastle side on parade this season. Although McGarry failed to sign Spurs' **John Duncan**, he did strengthen his team by taking **Terry Hibbitt** and **John Connolly** from Birmingham in a straight exchange for Barrowclough. Hibbitt thus returns to Tyneside after a three-year absence.

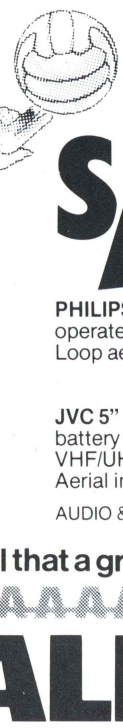
● At Leicester City, the emphasis was on youth towards the end of the relegation campaign. This could well continue, but the Filbert Street side


expect to be much fitter after training all the summer with new manager **Jock Wallace**.

On his arrival from Rangers in May, Wallace organised a strenuous fitness programme, including running and sprinting on the track and stamina work up and down a sand-hill. He said: "I want our players to be fittest in the Second Division. I based my success at Rangers (he won the Scottish treble last season) on having a superbly-fit side."

● Of the promoted sides, Wrexham will be a popular fancy to carry on where they left off in the Third Division. As a reward for winning the Championship and qualifying for Europe, manager **Arfon Griffiths** was given a new contract, while player-coach **Mel Sutton** was up-graded to assistant manager.

● It's not so easy to assess the other newcomers. Cambridge, who signed midfielder man **Peter Graham** from Lincoln City, were a surprise team after losing manager **Ron Atkinson** to West Brom last term. Preston, under **Nobby Stiles**, came with a strong run in the second half, but how will they react to the loss of **Mike Elwiss**? Much may depend on **Alex Bruce**, who scored 27 League goals in the promotion year.

ANOTHER

GREAT



## SAVE

**PHILIPS 711.** 12" mains/battery operated. Press button channel selection. Loop aerial included.


Only **£69.95**

**JVC 5"** mains/car battery or internal battery operated model. VHF/UHF reception. Aerial included.

Only **£79.95**

AUDIO & T.V. DEPARTMENT — THIRD FLOOR.

all that a great store should be



# ALLDERS

NORTH END CROYDON 01 681 9577

## POST WAR PANORAMA

By the Rev. Nigel Sands

### 1. 1946-47: EXCELLENT PORTENTS; DISAPPOINTING RESULTS

Fully competitive post-war soccer opened on the last day of August 1946 and at Selhurst Park there were sound reasons for optimism at the prospect. Manager George Irwin, himself a former Palace goalkeeper, and a manager well respected in the game, had achieved no little success for Palace during the War-time competitions and had at his disposal a very useful looking squad of players.

There were 5 men who had played for the club's pre-war League side: skipper and right-back Fred Dawes; Jack Lewis, a splendid right-half; Tommy Reece at number 6; Bert Robson, a clever centre-forward; and Ernie Waldron, a dapper, tricky little inside-forward. During the War several astute signings had been made including Dick Graham (goalkeeper), balding Bill Bassett (centre-half) and Freddie Kurz (centre-forward). But probably the best footballer on the Palace staff was young Arthur Hudgell who had developed through the War years into a superb, cultured left-back.

The portents then were excellent. Sad to say the actual performance was very much less than that. Robson rarely produced his sparkling war-time form: Waldron soon signed for Aberdeen and had to retire at the end of the season through ill-health. It became difficult to field a settled side — only once could Manager Irwin put out the same team for more than two consecutive matches.

When Palace did play to their full ability we scored some splendid victories. Two away wins in three days at Norwich and Leyton Orient in September and a 6-1 home victory over Torquay on Christmas morning were certainly convincing evidence that we could play attractive and effective football. But in the main, we were enigmatic and disappointing.

It was in only the second match of 1946-47 that Palace suffered their highest scoring League defeat. Having lost 1-3 at Mansfield on the opening day we were at Reading the following Wednesday. Three goals in arrears after a quarter of an hour Palace staged a creditable recovery to make the half-time score 2-3, but immediately after the interval Reading netted 5 times in 15 minutes and went on to reach double-figures. However, for the record be it noted that in the return fixture two weeks later Palace won 2-1; Freddie Kurz hit the woodwork three times without scoring; and Reading's goal came right near the end of a match that we had dominated throughout. Truly, it's a strange game!

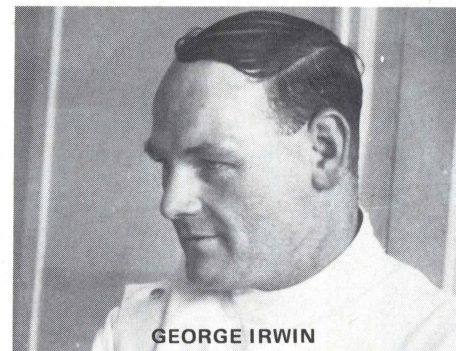
On account of our high position in the 3rd Division table of 1938-39 Palace were excused the

# MEMORIES OF THE PALACE

SEASON  
1946-47

early rounds of the Cup. But when the draw was made for Round 3 we were the only London club to have to travel, and it was to Tyneside that we had to go to face mighty Newcastle United on January 11th. There was to be no repetition of the 1907 giant-killing: we lost 2-6 in a brave performance. Bill Naylor notched our brace of goals.

High up in the stand at Gallowgate that afternoon was a scout from neighbouring Sunderland. He was so impressed with Arthur Hudgell's distinguished performance that Sunderland officials were constantly at Selhurst Park and at the end of January Arthur left us for Wearside at a then record fee (£10,000) for a Third Division player. Other players soon to join a 1st Division club were Harold Girling and Bill Naylor who went to Brentford.



GEORGE IRWIN

In February winter weather closed in. We were only able to play our home match with Leyton Orient on February 1st because 18 German prisoners of war had cleared the snow from the pitch that morning, while the game at Swindon on March 15th was played in a blizzard. We beat the O's 2-0 but lost at Swindon to a hotly disputed penalty 5 minutes from full-time. In the end postponements inevitably occurred and the season wasn't completed until the Whitsun weekend! Palace drew 0-0 at home with Bristol City on the Saturday but lost 2-4 at Port Vale on the Bank Holiday.

*Final Position in Division 3(South):* 18th.

*Full League Appearances:* Fred Dawes and Jack Lewis.

*Leading Scorers:* Bill Naylor 8; Bert Robson, Fred Kurz and Harold Girling 6 each.



# STATS 7S.9

## FIRST TEAM APPEARANCES & GOALSCORERS 1977-78

BLYTH 6 (0), BOURNE 22 (1), BOYLE 1 (0), BRENNAN 1 (0), BURNS 34 (0), BURRIDGE 10 (0), CANNON 44 (3), CASWELL 2 (0), CHATTERTON 37 (10), EVANS 12 (1) FENWICK 10 (0). FRY 1 (0). GILBERT 18, GRAHAM 25 (1), HARKOUK 30 (12), HILAIRE 32 (2), HINSHELWOOD (M. A.) 4 (1), HINSHELWOOD (P. A.) 45 (2), HOLDER 16 (0), JUMP 1 (0), MURPHY 8 (1), NICHOLAS 24 (1), PERRIN 19 (5), SANSOM 46 (2), SILKMAN 28 (2), SMILLIE 1 (0), SWINDLEHURST 43 (12), WALL 8 (1), WALSH 16 (2)

### GOALS IN BRACKETS

## COMBINATION APPEARANCES & GOALSCORERS 1977-78

SANSOME 1, RANSON 2, DARE 33 (1), GILBERT 16 (1), HINSHELWOOD 24 (1), SWINDLEHURST 2 (1), MURPHY 13 (3), FENWICK 17, CARTER 16 (1), WALSH 22 (11), SMILLIE 27 (4), BRENNAN 31 (1), FRY 14, NICHOLAS 6, LOVELL 23 (3), CASWELL 26, SPARKS 24 (1), HOLDER 16 (3), JUMP 18, SILKMAN 7 (1), HILAIRE 5, LEAHY 24 (2), PAYNE 5 (1), WALL 11, PERRIN 11 (3), VAUGHAN 1, PAUL 5, BANFIELD 1, BOURNE 6 (3), HARKOUK 9 (5), BLYTH 8, COX 1, GRAHAM 3 (1), BOYLE 18, CAREY 5 (1), COOMBS 3, HUNN 3, MORGAN 2, JACKSON 4, MERCER 3, PAGE 3, MACKENZIE 3 (1), HORN 1, CHATTERTON 4, HINSHELWOOD 1:

### GOALS IN BRACKETS

## F.A. YOUTH CUP 1977-78

|           | APPS | GOALS |
|-----------|------|-------|
| FRY       | 9    |       |
| NICHOLAS  | 10   | 1     |
| DARE      | 10   |       |
| SPARKS    | 10   |       |
| GILBERT   | 10   |       |
| FENWICK   | 10   | 2     |
| MACKENZIE | 8    | 1     |
| MURPHY    | 10   | 5     |
| CARTER    | 10   | 1     |
| LOVELL    | 10   | 2     |
| HILAIRE   | 10   | 2     |
| HORN      | 1    |       |
| LEAHY     | 3    | 1     |
| BANFIELD  | 2    |       |



## INDUSTRIAL STAFF COMPANY

01-688 1889

### Looking for a New Job!

We have Vacancies in all Engineering and Motor Trades for all types of staff including MECHANICS, WIRERS, MACHINISTS, FITTERS AND MANY, MANY MORE, SO FOR TOP RATES

### LOCALLY

Call in at Industrial Staff Co.

**2nd Floor, 64 George Street, Croydon**  
or phone 01-688 1889

## FIRST TEAM FIXTURES 1978-79

| DATE    | V | OPPONENTS                   | F.A. | 77/78  | ATT. | 77/78 |
|---------|---|-----------------------------|------|--------|------|-------|
| Aug. 19 | A | Blackburn Rvs.              |      | 12,119 |      |       |
| 22      | H | LUTON TOWN                  | 0-3  | 22,405 |      |       |
| 26      | A | WEST HAM UTD.               | —    | —      |      |       |
| 29      | A | Bristol City League Cup (2) |      |        |      |       |
| Sept. 2 | H | Sheffield Utd.              | 2-0  | 14,541 |      |       |
| 9       | H | SUNDERLAND                  | 2-2  | 21,150 |      |       |
| 16      | H | Millwall                    | 3-0  | 15,216 |      |       |
| 23      | A | Stoke City                  | 0-0  | 11,509 |      |       |
| 30      | A | League Cup (3)              | 2-0  | 17,749 |      |       |
| Oct. 7  | — | PRESTON NORTH END           |      | 26,528 |      |       |
| 14      | A | Wrexham                     | 0-0  | —      |      |       |
| 21      | A | FULHAM                      | —    | 28,094 |      |       |
| 28      | H | Burnley                     | 2-3  | 10,460 |      |       |
| 4       | A | League Cup (4)              | 1-1  | —      |      |       |
| 7       | H | BLACKBURN RVS.              | 5-0  | 13,021 |      |       |
| 11      | A | West Ham Utd.               |      | —      |      |       |
| 18      | H | SHEFFIELD UTD.              | 1-0  | 13,788 |      |       |
| 21      | A | Cardiff City                | 2-2  | 9,314  |      |       |
| 25      | H | NEWCASTLE UTD.              | 0-2  | 7,710  |      |       |
| Dec. 2  | A | Notts County                |      | —      |      |       |
| 9       | A | League Cup (5)              |      | —      |      |       |
| 12      | H | LEICESTER CITY              |      | —      |      |       |
| 16      | A | Cambridge Utd.              |      | 13,769 |      |       |
| 23      | H | BRISTOL RVS.                | 1-0  | 15,620 |      |       |
| 26      | H | Orient                      | 0-1  | 14,971 |      |       |
| 30      | A | Charlton Ath.               |      | 15,962 |      |       |
| Jan. 1  | — | F.A. Cup (3)                |      | 27,259 |      |       |
| 6       | A | Sunderland                  | 0-0  | —      |      |       |
| 13      | — | League Cup (SF)             |      | 7,819  |      |       |
| 16      | H | MILLWALL                    | 1-0  | 14,798 |      |       |
| 20      | — | League Cup (SF)             |      | 28,208 |      |       |
| 23      | A | FA Cup (4)                  |      | —      |      |       |
| 27      | — | Oldham Ath.                 | 1-1  | —      |      |       |
| Feb. 3  | H | STOKE CITY                  | 0-1  | 7,819  |      |       |
| 10      | H | Brighton & Hove             | 1-1  | 14,798 |      |       |
| 17      | H | PRESTON NORTH END           |      | 28,208 |      |       |
| 24      | H | Fulham                      | —    | —      |      |       |
| Mar. 3  | H | WREXHAM                     | 1-1  | —      |      |       |
| 10      | H | BURNLEY                     | 1-1  | 10,090 |      |       |
| 17      | H | Luton Town                  | 1-1  | 15,367 |      |       |
| 24      | H | CARDIFF CITY                | 0-1  | 9,816  |      |       |
| 31      | A | Newcastle Utd.              | 2-0  | 16,262 |      |       |
| 7       | H | CAMBRIDGE UTD.              |      | —      |      |       |
| 10      | A | Bristol Rvs                 | 0-3  | 10,615 |      |       |
| 14      | H | CHARLTON ATH.               | 1-1  | 25,788 |      |       |
| 17      | H | Leicester City              | —    | —      |      |       |
| 21      | A | NOTTS COUNTY                | 2-0  | 14,691 |      |       |
| 28      | — | Orient                      | 0-0  | 10,037 |      |       |
| 5       | A | Cup Final                   |      | —      |      |       |
| 12      | — |                             |      | —      |      |       |

## RESERVE TEAM FIXTURES 1978-79

| DATE    | V | OPPONENTS         | F.A. | 77/78 |
|---------|---|-------------------|------|-------|
| Aug. 19 | H | BRISTOL RVS.      |      | 1-1   |
| 23      | A | Chelsea           |      | 1-0   |
| 30      | A | Queens Pk Rngrs   |      | 0-1   |
| Sept. 2 | H | BRISTOL CITY      |      | 2-2   |
| 13      | A | Reading           |      | 2-0   |
| 16      | H | SOUTHAMPTON       |      | 0-3   |
| 23      | A | Hereford Utd.     |      | 0-0   |
| 30      | A | Ipswich Town      |      | 1-4   |
| Oct. 11 | H | OXFORD UNITED     |      | 2-0   |
| 14      | H | CARDIFF CITY      |      | 0-3   |
| 21      | H | FULHAM            |      | 1-0   |
| 24      | A | Bristol City      |      | 4-1   |
| 4       | A | Arsenal           |      | 0-0   |
| 14      | H | WEST HAM UTD.     |      | 4-2   |
| 18      | H | Bristol Rvs.      |      | 3-0   |
| 25      | H | QUEENS PK RNGRS   |      | 4-2   |
| Dec. 2  | A | Leicester City    |      | 5-1   |
| 9       | A | Swindon Town      |      | 0-1   |
| 16      | A | Orient            |      | 0-2   |
| 23      | H | Tottenham Hotspur |      | 0-2   |
| 30      | A | Luton Town        |      | 3-1   |
| Jan. 3  | A | BIRMINGHAM CITY   |      | 2-1   |
| 13      | H | Plymouth Argyle   |      | 0-1   |
| 16      | H | NORWICH CITY      |      | 1-0   |
| 23      | H | READING           |      | 0-3   |
| 30      | H | Southampton       |      | 0-3   |
| Feb. 6  | H | HEREFORD UTD.     |      | 0-1   |
| 13      | H | IPSWICH TOWN      |      | 2-2   |
| 17      | A | Oxford Utd.       |      | 1-1   |
| 24      | A | Cardiff City      |      | 2-2   |
| Mar. 3  | A | Fulham            |      | 0-0   |
| 10      | H | ARSENAL           |      | 0-0   |
| 17      | H | West Ham Utd.     |      | 0-0   |
| 24      | H | LUTON TOWN        |      | 0-1   |
| 31      | H | CHELSEA           |      | 2-0   |
| Apr. 7  | H | Leicester City    |      | 3-2   |
| 11      | H | SWINDON TOWN      |      | 4-1   |
| 18      | H | Norwich City      |      | 1-0   |
| 24      | A | TOTTENHAM HOTSPUR |      | 1-2   |
| 28      | A | Birmingham City   |      | 1-0   |
| May 5   | H | Orient            |      | 1-1   |
|         |   | PLYMOUTH ARGYLE   |      | 1-3   |



# TEAMCHECK

## PALACE

White Shirts with Scarlet and Royal  
Blue Sash, White Shorts

- 1 JOHN BURRIDGE
- 2 PAUL HINSHELWOOD
- 3 KEN SANSOM
- 4 NICK CHATTERTON
- 5 JIM CANNON
- 6 BILLY GILBERT
- 7 PETER NICHOLAS
- 8 JERRY MURPHY
- 9 DAVE SWINDLEHURST
- 10 MIKE ELWISS
- 11 VINCE HILAIRE
- 12

## LUTON TOWN

Orange with White and Navy Striped Shirt  
Navy Blue Shorts

- 1 MILIJA ALEKSIC
- 2 KIRK STEPHENS
- 3 STEVE SHERLOCK
- 4 MAL DONAGHY
- 5 CHRIS TURNER
- 6 MARK HAZELWOOD
- 7 RICKY HILL
- 8 PASQUALE FUCCILLO
- 9 BRIAN STEIN
- 10 BOB HATTON
- 11 DAVID MOSS
- 12

### REFEREE PETER REEVES (Leicester)

Started refereeing in 1958 after having represented England at schoolboy level and played professionally with Leicester City and Mansfield. A sales director for a hosiery company, he refereed a Texaco Cup Semi Final in 1973-74 and a year later was linesman at an F.C. Cup Semi-Final.

**Linesmen:**  
P.J. DREWE (Upminster)  
Red Flag  
K.A. MILLER (Epping)  
Yellow Flag

### SCORECHECK

#### Division One:

Birm. City v Middlesbrough\_\_\_\_\_  
Bristol City v Norwich City\_\_\_\_\_  
Coventry City v Nottm. F.\_\_\_\_\_  
Everton v Derby County\_\_\_\_\_  
Ipswich v Liverpool\_\_\_\_\_  
Manchester City v Arsenal\_\_\_\_\_  
Q.P.R. v W.B.A.\_\_\_\_\_  
Southampton v Bolton\_\_\_\_\_  
Wolves v Chelsea\_\_\_\_\_

#### Division Two:

Brighton v Cambridge Utd.\_\_\_\_\_  
Charlton v Burnley\_\_\_\_\_  
Fulham v Wrexham\_\_\_\_\_  
Notts Co. v Millwall\_\_\_\_\_  
Oldham v Bristol Rovers\_\_\_\_\_  
Orient v Sunderland\_\_\_\_\_  
Preston v Blackburn\_\_\_\_\_

# How to make sure of your season ticket



Get yourself a well-paid job with Philips in Croydon and the ticket's as good as bought. What's more you'll be in with a regular crowd of Palace supporters. Watch the local paper for vacancies in TV, technical, assembly, testing and admin.

**For more information contact:**  
**Personnel Department,**  
**Philips Croydon, Commerce Way,**  
**Croydon CR9 4JA. Tel: 01-688 7766.**



**PHILIPS**





# PALACE OFF THE PARK

Football League Cup 2nd Round  
**BRISTOL CITY**  
v  
**CRYSTAL PALACE**  
29th August Kick-off 7.30 pm

*As ever at the start of a new season we find ourselves plenty to talk about and we will kick off with story behind the presentation picture on the opposite page.*

*After a successful summer season of fortnightly lottery draws the Palace commercial department introduced an "Instant" type ticket which became an immediate success.*

*The first £1,000 winner was Mr. Tom MacLean of 8 Seymour Terrace, Penge, who purchased his ticket from Mr. Vic Hucknell, mine host of the Holly Bush, Westow St., Upper Norwood within hours of the tickets being delivered.*

*Vic Hucknell, is a keen Palace fan and he arranged for Tom to come with him to the Palace Photocall for Terry Venables to present the cheque just TWO days after he had purchased the winning ticket!!*

*Pictured on page 19 are (left to right): Winner Tom MacLean, Lottery Organiser Les Allen, Palace Director J.C. Williams, Chairman Mr. R.E. Bloye, Terry Venables and Vic Hucknell.*

## PALACE BINGO

These popular weekly Bingo tickets are continuing to operate under the supervision of organiser John McNicholl who asks all those fans who supported him last season and are prepared to sell Palace Bingo tickets weekly again this season to contact him as soon as possible in the Pools Office or Telephone 643 4177 or 771 9502 for information.

## TRAVEL AWAY

Travel arrangements for supporters to away matches will be on similar lines to last season. Neil Everitt will again be responsible for coach travel and Maurice Drewitt will take charge of the Rail Travellers Club.

A 50p membership fee will be required this season which will entitle supporters to travel by either rail or coach.

Anyone wishing to join the coach or rail travellers club can do so this evening by popping along to the Social Club (side door entrance). Please note that a passport type photograph must be produced.

## TO SHEFFIELD UNITED

*Should you wish to travel by road the R.A.C. have once again kindly provided us with the best way to go:-*

*Approximately 149 miles from West London*

*Compiled by the Royal Automobile Club*

Leave from Marble Arch by Edgware Road and continue to the roundabout at Staples Corner. Follow the signs to the start of the M.1 and continue by the M.1 northward to Intersection No. 31. Follow the signs "Sheffield" and continue by the A.57 to Sheffield ..... 149 miles.

Enter Sheffield by Handsworth Road A.57 and continue to the roundabout. Take the first exit — Sheffield Parkway — and continue to the next roundabout. Take the first exit — Prince of Wales Road — and continue to the junction with Gleadless Road B6388 and at the end turn right again. Continue by Queens Road and turn left onto

Bramall Lane and the ground is on the right. There is parking space available near the ground but street parking is controlled by the police, so watch for any special signs, including diversions. Your nearest RAC offices are at: RAC, P.O. Box 100, RAC House, Lansdowne Road, Croydon CR9 2JA; or, RAC Northern Home Counties, 130 St. Albans Road, Watford, Herts.

## MATCH BALL DONORS

Any company, group or individual who would like to donate a match ball for a Palace first team game should contact our Assistant Commercial Manager Sylvia Stewart on: 01-771-9502. Enquiries are most welcome.

## CRYSTAL SET

Once again we are pleased to announce that our regular announcer/D.J.'s John Henry, supported by John Courtney will again be in regular attendance at our first team games. Special requests, birthdays, etc. should be addressed to "The Crystal Set", Crystal Palace F.C., Selhurst Park S.E.25.

Top ten records will be available to us for the whole of the season — thanks to the generosity of Alders of Croydon's record department. This will be a tremendous boost to the two John's who will be able to give you an even better pre-match entertainment service.

OUR SINCERE THANKS TO ALLDERS.

## NEW PROGRAMME

With the new season under way we have the opportunity to continue our regular communication with our fans via the Official Match Day programme. After three seasons of producing a magazine for 15p we have had to increase the price to 20p. The pages have, however, been increased to 20 while for certain local derby games and other important matches where a large sale is anticipated we intend to increase to 24 pages WITH NO EXTRA COST TO THE PURCHASER.

THE FIRST "EXTRA VALUE" PROGRAMME WILL BE ON SALE ON SATURDAY FOR OUR MATCH WITH WEST HAM UNITED.

While the increased price is beyond our control it is up to us to give value for money and we are confident of once again maintaining our reputation of producing one of the very best programmes in the country.

## PALACE PLATFORM

*We had a letter passed on to us recently by G. Martin of 13 Simons Avenue, Ashford, Kent who has a friend in America who supports Palace. The letter really says it all:*

HELLO FELLOW PALACE SUPPORTERS!

Yes! There lives and breathes an AMERICAN Crystal Palace supporter. I'm entering my 12th season as a "long distance" fan. I was told if I

had a few words to say, perhaps they'd be printed. On the promise of a definite maybe, here goes: TO THE TEAM: Warmest and sincerest wishes for a great season. I hope to hear of tighter defense and more goals by the front line.

IAN EVANS: I hope you will soon be in the very best of shape. Keep yourself healthy, okay?

TO THE FANS: You'll never know how fortunate you are! For 12 years I've followed Palace and not once have I seen a LIVE match. Go to the matches, support Palace. They will give their best each match. My wish is to sit one day among you and cheer Palace on to a win. Until then, turn out in full force. A team is nothing without its fans.

Fondest regards from America,  
Susan Mills,  
4525 Swann Avenue,  
Jampa,  
Florida, 33609, USA.

# PALACE SPONSORSHIP

## ALLDERS OF CROYDON

We are delighted to announce that next Saturday's derby game with West Ham United is being sponsored by the above company.

Further details will be announced in the programme on the day but in the meantime turn to Page 12 of this issue where Alders have reserved a regular space for a half page advertisement.

This, together with the top ten records supplied by their record department and noted in the Crystal Set feature (opposite page) heralds the commencement of a closer link between Croydon's largest store and our club.

## PHILIPS INDUSTRIES

The successful sponsorship of Philips Industries with our club continues into this season and we extend a hearty welcome to Directors, Management and Staff of Philips to this evening's game.

## SAINSBURY'S

The future development of the Whitehorse Lane end of the ground in conjunction with Sainsbury's (highlighted in the final programme of last season) has resulted in Sainsbury's arranging a sponsorship with us. A regular full page advertisement will appear for the first time in next Saturday's programme and we take this opportunity of welcoming Directors, Management and Staff of Sainsbury's to Selhurst Park and trust they will have an enjoyable season.





# the official programme



Tuesday 22nd August 1978 League Division Two