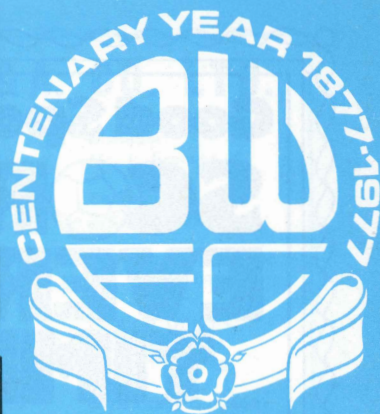


BOLTON WANDERERS

BURNDEN PARK



Today's match is sponsored by WALKDEN METALS

SECOND DIVISION

LUTON TOWN

Saturday, October 29th, 1977

Kick-off 3-0 p.m.

OFFICIAL PROGRAMME 12p

Good Sports
SCORE
EVERY
TIME

at
Whitakers
Sports Shop

Lower Ground Floor

whitakers
the centre of Bolton



PARADISE RESTAURANT

296 CHORLEY OLD ROAD, BOLTON — Tel. 42315

(Open 8-00 p.m. to 4-00 a.m.)

TRY THE BEST STEAKS AND INDIAN CURRIES IN THE NORTH

Also visit our shop at 76 St. Helens Road, Bolton, for
CLOTHES FOR ALL THE FAMILY

STEEL TUBE - VALVES
FITTINGS & FLANGES

MARKLAND +
ENGLAND LTD

BROMLEY CROSS, BOLTON

Tel.: Bolton 54911 Telex: 63468

Telephone: BOLTON 46231/2

KENYON BROS.

(Sheet Metal) Bolton Ltd.

Sheet Metal Workers to Industry

HASLAM'S MILL
CHORLEY OLD ROAD
BOLTON

G.K. MATHER

PLUMBING CONTRACTORS
& HEATING ENGINEERS

N.W.G.B. APPROVED
HEATING INSTALLERS

HOME IMPROVEMENT
GRANTS

126 DERBY STREET BOLTON
Telephone: BOLTON 24730

**PACK HORSE
HEALTH SALON**

Bradshawgate - Bolton

Telephone: Bolton 31608

(Pack Horse Hotel, Bradshawgate entry)

**SAUNA, SOLARIUM
SLENDERTONE (Spot
Reducing)**

Sauna Suites available for Private Bookings
(By appointment).

Treatment by experienced osteopath. Massage
and Electrical Treatments advice on diets by
experienced physiotherapist—
B. P. Crockett, M.M.N.T.A.

BOLTON WANDERERS F.&A. CO. LTD.



President:

H. D. Warburton, Esq.

Directors:

G. Warburton, Esq. (Chairman),
J. W. Woods, Esq. (Vice-Chairman),
J. Battersby, Esq.,
B. Cowsill, Esq., J. Lightbourne, Esq.,
S. Jones, Esq., G. Ashworth, Esq.

Vice-Presidents:

Maj. J. Greenhalgh, Dr. J. B. Wright,
J. E. Baron, Esq., H. T. Tyldesley, Esq.,
W. G. Isherwood, Esq.

Manager:

Mr. I. Greaves

Secretary:

Mr. E. Rothwell

Commercial Manager:

Mr. A. G. Davies

Medical Officers:

Dr. W. Brabbin
Dr. J. T. Young

Consultant Surgeon:

Mr. M. Lentin, F.R.C.S.

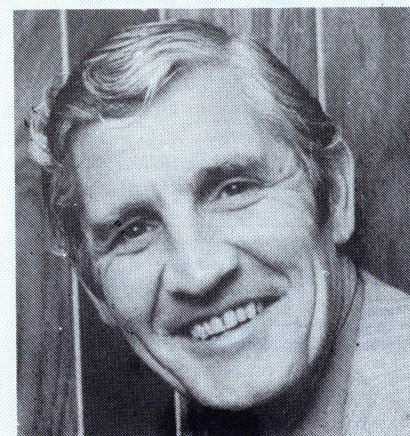
Football Association Cup Winners: 1923, 1926, 1929, 1958

F.A. Cup Finalists: 1894, 1904, 1953

Second Division Champions: 1908-9

F.A. Charity Shield: 1958-9

Third Division Champions: 1972-73



Welcome to today's visitors Luton Town as we return to Second Division soccer after our League Cup win over Peterborough United on Tuesday night.

Peterborough played it much as I expected, tight at the back. And while it took us a little time to break them down, when we scored two goals in three minutes through Roy Greaves and Sam Allardyce, there was no danger that we could lose.

The Third Division side deserve credit for the way they fought but in the end the margin could have been greater.

Luton Town are a totally different kettle of fish. They were among the

The Front Page picture is by courtesy of the Bolton Evening News

promotion challengers last season and I expect them to be thereabouts this season.

In last season's encounters we won 2-1 here at Burnden and drew 1-1 at Kenilworth Road.

Both games were very entertaining and I hope today's follows the same pattern.

On 26th November, we entertain Tottenham Hotspur here at Burnden and because of the interest likely to be generated, admission to stand seats will be by ticket only.

Holders of six or more ticket vouchers have until next Saturday to purchase tickets: those with three or more from 7th November to 12th November and one or more from 14th November to 17th November. After that they will go on open sale.

Tickets will be limited to one per set of vouchers and the rest of the accommodation will be "pay at the turnstiles".

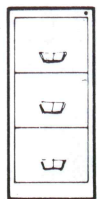
Selling times are 9-00 a.m. to 4-45 p.m. Monday to Friday, and 9-00 a.m. to 2-45 p.m. on Saturdays.

Ian Greaves

CUT OUT
AND RETAIN



* BOLTON *
* WANDERERS *
* 9 *
* TOKEN *



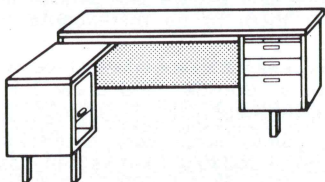
THE BEST TEAM IN BOLTON
FOR
**NEW & USED OFFICE
FURNITURE**



MASSIVE STOCKS • BIG DISCOUNTS • IMMEDIATE DELIVERIES

- ★ DESKS ★ FILING CABINETS ★ CHAIRS ★ TABLES
- ★ CAFE & CANTEEN FURNITURE ★ CUPBOARDS
- ★ CLOTHES LOCKERS
- ★ LEASING & HIRING FACILITIES AVAILABLE

G. F. PENNINGTON & SONS



1st FLOOR, FLETCHER MILLS

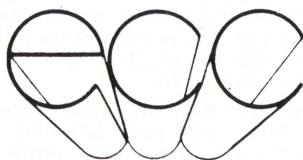
FLETCHER STREET

BOLTON BL3 6NE

Tel. 29254 & 25769

Also at PINNERS BROW, WARRINGTON

Tel. WARRINGTON 53428/9



EUROWAY CAR CENTRE LIMITED

Folds Road, Bolton BL1 2RS

Telephone :

Bolton (0204) 387861

FOR



VALUE



WHITE SHIRT
£3-95

THREE PIECE
PINSTRIPED SUIT
£39-95

POINTED SHOES
£17-95

8 Newport Street
Bolton

Telephone: 35562

Pen Pics

MILIJA ALEKSIC — Luton paid £20,000 to Plymouth in January, 1977, for Aleksic's services, and the fee turned out to be a bargain. Aged 24, he broke into football as a part-timer with Stafford Rangers.

PAUL PRICE — His hopes of a career in League soccer had to overcome a double disaster before he made the grade — recruited by Luton as a youngster he was on the verge of success when he broke his leg. He fought his way back to fitness, only to break it again.

STEVE BUCKLEY — Officially a left back, Buckley is more than a top-class defender — his speed and sharp-shooting make him a dangerous attacker too. He was a free-scoring left winger with Burton Albion when Luton signed him for a bargain price of £2,000 in the summer of 1974.

ALAN WEST — Luton's club captain and a brilliant midfield man. Alan is one of the many stars to emerge from the "production line" of Burnley. An England Under-23 international, he joined Luton for £100,000 from Burnley in October, 1973.

JIM HUSBAND — Joined Luton in November, 1973, with a string of honours already collected with Everton. He plays as an attacking midfielder or as a front runner, and has provided a regular supply of goals. Moved to Luton for a £70,000 fee.

GARY HEALE — Now in his second season with Luton after being signed from Canvey Island. Tottenham were very keen to sign him but he was finally persuaded to join Luton. Good in the air and is a good target man to play to.

JOHN FAULKNER — Luton's senior pro. and vice-captain, he has given Luton sterling service since they paid £6,000 for him in March, 1972. He emerged from obscurity as centre-half in the Sutton United team that played Leeds. Don Revie signed him on, but a broken leg interrupted his career at Elland Road.

RICKY HILL — A midfield player who has excited attention all over the country, Ricky had a fairy-tale start to his League career. Signed as an apprentice from schools football in North London, he made it into the League team within a year and celebrated his debut by scoring once and laying on another goal. Now 19, he has been capped by England at youth level.

PAUL FUTCHER — One of the brightest prospects in League football today, Luton risked their record transfer fee when they paid Chester £100,000 for him in the summer of 1974. He was still only 17, and with only a handful of Fourth Division games behind him. He has been capped by England at under-21 level.

RON FUTCHER — Twin brother of Paul and identical in looks. When Luton paid £25,000 for him it was thought that he had been transferred from Chester because the boys wanted to be together, but Ron soon made his mark with a hat-trick in his second First Division game and has since established himself in Luton's front line.

PASQUALE FUCCILLO — Son of Italian parents who settled in Bedford, midfield dynamo Fuccillo — "Lil" to his friends and the Luton fans—joined Luton as a 16-year-old apprentice in the summer of 1973. Marked his League debut with a goal and has been a regular marksman ever since.

Magnet Southern

TIMBER, MOULDINGS, DOORS, WINDOWS, STAIRS, KITCHEN UNITS

The "HAVADEAL" Shop - YOUR D.I.Y. SUPERMARKET

— a wide range of D.I.Y. products always in stock —

- LAMINATES ● PLYWOODS ● WALLBOARDS ● FENCING
- DRI-BOND ROOFING & ACCESSORIES ● LADDERS
- FOBEL PRODUCTS ● SASCO PACKS

F. J. WEBSTER LTD.

"HAVADEAL", SPA ROAD, BOLTON - Tel. 21611 Ext. 1 and 9

- SUPPLIERS OF NEW AND USED CARS
- APPROVED INSURANCE REPAIRERS

■ SERVICING AND REPAIRS

■ 24-HOUR TOWING SERVICE

■ M.O.T. TESTING STATION

Cellulosing and Body Repair Division

ECKERSLEY ROAD - BLACKBURN ROAD

WARWICK RIMMER
AUTOS LIMITED

SHAW STREET GARAGE, DAUBHILL,
BOLTON. Tel: Bolton 27537.

MELLING & BATH LTD.

Manchester Road
Westhoughton - Bolton

SHEET METAL & PLATE
FABRICATIONS

QUALITY WORK AT THE
RIGHT PRICE

Tel. Westhoughton 813391

H. S. MOTORS LTD.

TEL. 53438

Darwen Road - Bromley Cross

CARS BOUGHT AND SOLD

M.O.T. AND SERVICING

PETROL - OIL

MONTHLY ACCOUNTS WELCOME

BODY REPAIRS - SPRAYING

CRYPTON TUNING

SECOND-HAND PARTS

Contractors Plant

HIRE • SALES • SERVICE

FLETCHER
PLANT COMPANY

Orlando Bridge, Orlando Street,
BOLTON BL3 6DP Tel. Bolton 25108-9



Accrington Depot:

Altham Colliery Industrial Estate,

Altham, Accrington. BB5 5TX

Telephone: Accrington 31207

SMITH BROS. (DARCY LEVER) LIMITED

AQUEDUCT ROAD, RAIKES LANE, BOLTON

TELEPHONE: 26816

RELIABLE SERVICE



MOBILE
CRANE HIRE
7-tons CAPACITY

MAINTENANCE ENGINEERS

PIPEWORK & WELDING

MACHINERY REMOVERS

FABRICATION WELDERS
& FITTERS

Today's Visitors

A run of four successive victories recently put Luton Town into second spot in Division Two, and it's clear that, now the players have greater confidence in themselves, the Hatters must be rated among the favourites for promotion.

They were exceedingly unlucky to miss out last season after a phenomenal late run which saw them string up nine consecutive victories!

Luton's present position is the more remarkable when we recall their traumatic experiences of two years ago when the club seemed certain to fold under the strain of its financial commitments. It was saved only by selling off 14 players and manager Harry Haslam had the unenviable task of building virtually a completely new team.

Their financial problems crystalised only a few months after the club had lost its First Division place, after only one season, in 1975. Luck was all against them then, too. They seemed to be safe until Tottenham won their last match to save themselves and put the Hatters down.

In spite of all these disappointments, manager Haslam still manages to keep that happy smile upon his face and he has certainly seen much in his team's play to please him this season.

Best of all was a superb 7-1 victory over Charlton in a game which brought four goals, including one penalty, for Jimmy Husband. Another outstanding display had them winning 4-1 at Cardiff while, in the second round of the League Cup, they defeated First Division Wolves at Molineux.

There can be little doubt in anyone's mind that Luton are First Division material. The problem, as we have found, is in playing it the Second Division way sufficiently well to win a place up there in Division One.

A look at the Hatters' side shows it to be a well-balanced team. In the middle of the attack they have the big Ron Futch, top scorer with 13 goals last season, and he is supported by Jimmy Husband, the former Everton player, and Phil Boersma, who began his career with Merseyside rivals

Liverpool. Boersma was signed this summer from Middlesbrough for £35,000 and he has scored three goals so far.

The midfield trio is Pasquale Fuccillo, Ricky Hill and Alan West while the back four has settled with Paul Price, Paul Futch, John Faulkner and Steve Buckley on regular parade.

Paul Futch recently played with Peter Reid in the England Under-21 side against Finland, of course.

Milija Aleksic has now taken over in goal. He was signed from Plymouth for £20,000 last season.

Waiting anxiously in the wings for an extended chance are such fine young players as Gary Heale, a forward, and David Carr, who can play in defence or midfield. Heale, in fact, celebrated his first League game with a goal in the 7-1 thrashing of Charlton.

Luton were involved in a drawn third round League Cup tie against Manchester City earlier in the week — a match that revived nostalgic memories for older Hatters' fans.

City visited Kenilworth Road in 1961 for another cup-tie, this time in the fourth round of the F.A. Cup. Denis Law smashed home six goals for City who led 6-2 when the game was abandoned some 20 minutes from the end. When the game was replayed, Law scored again ... but Luton won 3-1.

The Luton club was founded in 1885 and gained election to the Second Division of the Football League in 1897. They were voted out three years later but regained League status when the Third Division (South) was formed in 1920.

They returned to the Second Division in 1937, remaining until they gained First Division status for the first time in 1955. In 1969 they were beaten by Nottingham Forest in the F.A. Cup final and a year later they were relegated.

It wasn't long before they sank right down into the Fourth Division but the climb back began with promotion in 1968 and a move back into the Second Division two years later.

Then came that solitary campaign in Division One in 1974-75.

Bolton Evening News

SPORT EVERY NIGHT



BARR
SOFT DRINKS

Today's match is sponsored by WALKDEN METALS

PARKERS OF BOLTON

BRADSHAWGATE

Telephone: 31323

CARS FOR SALE, FULLY GUARANTEED

1977	R	CHRYSLER	Avenger 1300 DL Estate. As new. Low mileage.	£2,295
1977	R	CHRYSLER	Alpine S 1500 saloon. L/mileage. Radio.	£2,995
1977	R	AUSTIN	Allegro HL 1750 saloon. As new.	£2,495
1976	S	DATSUN	120 Y 4-door saloon. Low mileage.	£1,695
1976	S	DATSUN	100 A 2-door saloon. 12,000 miles.	£1,695
1976	S	AUSTIN	Mini 1000 saloon. Low mileage.	£1,695
1976	P	AUSTIN	Princess 1800 HL. 19,000 miles only.	£2,295
1976	P	AVENGER	1300 DL 4-door. 12,000 miles.	£1,595
1975	P	ROVER	3500S. Very nice car. Bargain at	£2,695
1975	P	SIMCA	Special 1501 Estate. 12,000 miles.	£1,395
1975	N	VIVA	SL 2-door. 21,000 miles.	£1,295
1975	N	HILLMAN	Hunter 1500 DL Estate. 21,000 miles.	£1,625
1972	K	AVENGER	1300 DL. 31,000 miles.	£895

THREE MONTHS WARRANTY GIVEN ON
ALL USED CARS

£25 OFF
BRING THIS
VOUCHER ALONG
AND CLAIM £25
OFF ANY USED CAR
ADVERTISED PRICE BOUGHT IN OCTOBER, 1977

FULL SERVICE AND PARTS FACILITIES



CHRYSLER MAIN DEALERS





It's the Frank Worthington Show! The Wanderers' record signing from Leicester City notches the two goals that beat Mansfield Town.

Picture by Bolton Evening News



*Today's match
is sponsored
by . . .*

WALKDEN METALS

Scrap Metal Merchants



HIGHEST PRICES PAID



Tel. 061-790 2089

WOW! WAR ON WASTE

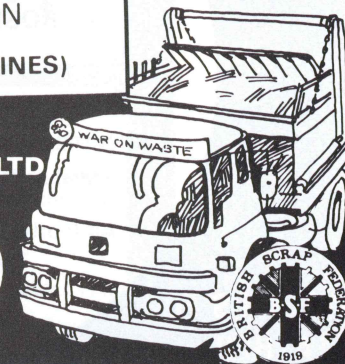
**Fast radio controlled container clearance of
industrial waste, household rubbish & metal scrap**

'PHONE FOR A CONTAINER ON
BOLTON 386201 (3 LINES)

STONES & HUTCHINSON LTD

ESTABLISHED 1924

**228 Waterloo
Street
Bolton**



FOR HOME CARE WITH A DISCOUNT

**THE
home
makers**

**Tonge Moor Rd.
BOLTON
also at
RADCLIFFE**

**HOMES BUILT BY PEOPLE WHO CARE
-FOR PEOPLE WHO CARE**

Keda



Homes for
people who care

**New developments at:-
SMETHURST HALL, JERICO,
BURY.
DOVEBANK, LITTLE LEVER
TEL: 061 723-4921**



MATCH BALL DONORS

All the footballs used
in this season's home
League games have been kindly
donated by

WILLIAM WALKER & SONS. LTD.
ROSE HILL TANNERY
BOLTON

Manufacturers of DRI-PED Sole Leather
Clothing, Upholstery, Mechanical Leathers

Member of Barrow Hepburn Group

All footballs supplied by WHITAKERS
The Centre of Bolton
Albert Ward Sports Dept.
Deansgate - Bolton

**WALKERS FOR
LEATHER**

**LEATHER FOR
WALKERS**

INSIST ON A DRI-PED REPAIR

SECOND DIVISION

	Home						Away						
	P	W	D	L	F	A	W	D	L	F	A	Pts	
BOLTON WANDERERS	12	5	1	0	12	5	3	2	1	8	5	19	
Tottenham	12	6	0	0	23	4	1	3	2	4	7	17	
Southampton	12	5	2	0	13	5	2	0	3	7	10	16	
Luton	12	5	1	0	12	1	2	0	4	9	10	15	
Blackpool	12	4	1	1	12	6	2	2	2	9	9	15	
Brighton	12	4	1	1	12	9	2	2	2	8	7	15	
Blackburn	12	4	1	1	9	4	1	3	2	6	9	14	
Crystal Palace	12	2	1	3	10	10	3	2	1	10	5	13	
Stoke	12	4	1	1	8	3	0	4	2	4	6	13	
Charlton	11	5	0	0	16	7	0	3	3	5	14	13	
Hull	12	3	2	1	7	2	1	2	3	4	7	12	
Orient	12	3	1	1	11	10	1	2	4	5	8	11	
Sheffield United	12	4	1	1	12	7	0	2	4	6	14	11	
Sunderland	12	2	2	2	7	6	1	3	2	7	11	11	
Fulham	12	2	3	1	12	6	1	1	4	4	9	10	
Oldham	12	3	2	1	7	5	0	2	4	5	13	10	
Mansfield	12	2	2	2	9	7	1	1	4	5	10	9	
Millwall	12	1	4	1	6	6	1	1	4	5	8	9	
Cardiff	11	2	3	1	7	7	0	2	3	3	10	9	
Bristol Rovers	12	2	3	1	10	6	0	1	5	5	21	8	
Notts County	12	1	4	1	8	7	0	1	5	6	17	7	
Burnley	12	1	3	2	5	6	0	0	6	4	18	5	

Today's match is sponsored by WALKDEN METALS

Wanderers Promotions

FIRST PRIZE ~ NOW
£200*

To: ALF DAVIES, Bolton Wanderers Development Association,
Burnden Park, Bolton.

I am interested in becoming an Agent for the Wanderers
Weekly Draw and Bingo. Please let me have full details.

NAME

ADDRESS

* DELETE AS NECESSARY

(PLEASE PRINT)

THE MORE YOU SELL...
STILL ONLY 10p
...THE MORE YOU SAVE

*The
Happy
Shop*

OFFICIAL
WANDERERS'
SOUVENIR
SHOP
IS NOW OPEN
from 9-30 a.m.
until 5-00 p.m.
SIX DAYS
EACH WEEK

We have
hundreds of
souvenirs,
ranging in price
from 5p to £15.

HARGREAVES

COACH
TOURS

Tel. 28211/3 MOOR LANE BUS STATION Tel. 28211/3

"YOUR SUPPORTERS CHOICE" WHEN FOLLOWING THEIR TEAM
WHY NOT YOUR CHOICE FOR ALL PASSENGER TRANSPORT REQUIREMENTS?

LET US QUOTE YOU

★ DAILY EXCURSIONS TO LOCAL HOLIDAY RESORTS ★

ALSO Consult our Travel Office at Moor Lane for Your 1978 Holidays

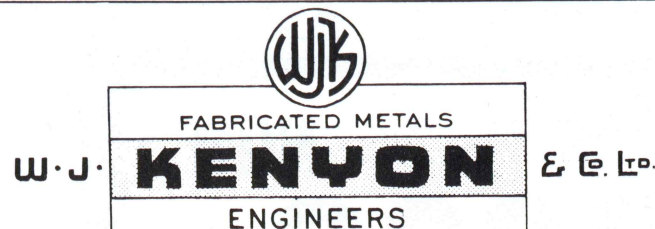
Main Agents for all Leading Operators — English and Continental Tours

Booking agents for:—

Websters, Barton-Premier, Robinsons, Smiths-Happiways-Spencers, Shearings, etc.

Today's match is sponsored by WALKDEN METALS

page 15



PRODUCTION FABRICATION

MANCHESTER ROAD, BOLTON . Telephone BOLTON 20941/2/3/4 Telex 63111

BRIAN PILLING

183 Blackburn Road, Bolton
Telephone: 23687

**RADIO - TELEVISION - ELECTRICAL
SALES AND SERVICE**

DOMESTIC ELECTRICAL INSTALLATIONS

Follow the Wanderers on a G.E.C. colour TV bought or rented from us!
"G.E.C. MAKE SPORTSVIEWING COMPLETE"

OFFICIAL B.W.F.C. CENTENARY PENDANTS in Gold and Silver

SILVER PENDANTS on heavy chains £19.50
GOLD PENDANTS TO ORDER — PRICE ON REQUEST

We also stock a good selection of:—
Silver Chains, Bracelets, Ingots, Coin Mounts

Also Gold Ingots, Chains, I/D and Gate Bracelets, Large Gold Coins
Sovereigns and Half Sovereigns and Mounts - Part Exchanges Welcome

We pay good prices for scrap gold & silver, coins & medals, pocket watches & chains.

EDDIE WALDUCK (Trade and Retail)

TELEPHONE: BOLTON 23290 AFTER 6-00 p.m.

WALKDEN AUTO CENTRE

THE COMPLETE GARAGE

● FREE FIX EXHAUSTS AND TYRES ●

Our prices are unbeatable — YOU can prove this with a
telephone call

CLUTCHES - SHOCK ABSORBERS - BRAKES, ETC.

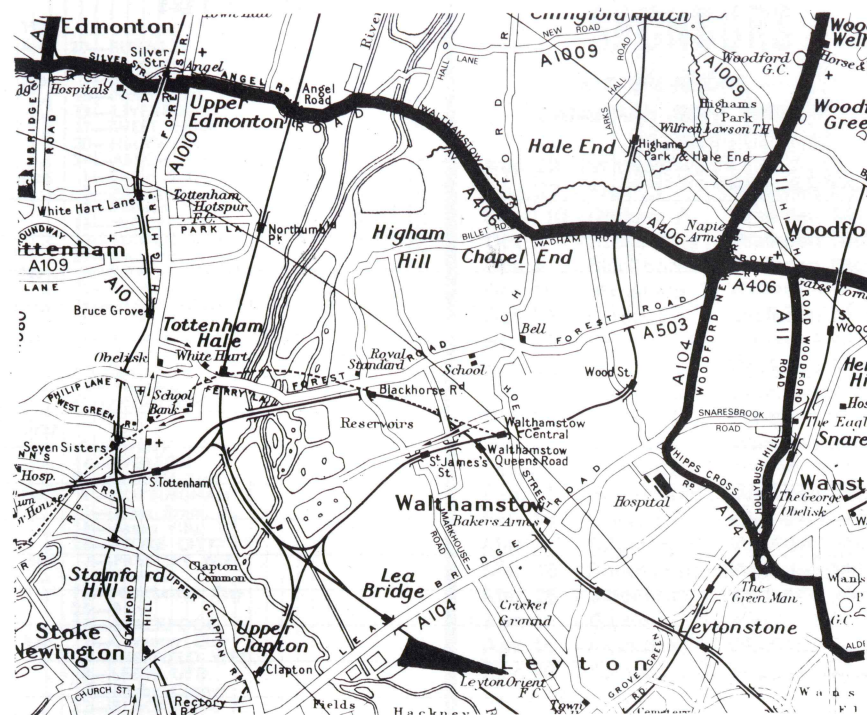
Primrose Mill - Campbell Way - Walkden

(SIDE OF SCAN SUPERSTORE)

061-799 0984

061-790 6705

How to get there...



The RAC have issued the following route for fans travelling to Orient by road:

A666(M)/M61/M62 (follow 'Liverpool' and 'M6 South' signs) to intersection 22, M6 at Croft (16 miles).

M6/M1 south to intersection 2, Five Ways Corner, Hendon, North London junction A1/A41 (210 miles).

A1 (follow 'A1 City' signs) to A406, North Circular Road (212 miles).

A406 (left) and via North Circular and A104 (Woodford Road) which you take to Whips Cross (221 miles).

A104 via Lea Bridge Road for 1½ miles then turn left into Church Road (A1006) to Orient's ground (224 miles).

Meet the Referee...

GEORGE COURTNEY (Spennymoor) — Started refereeing in 1962 and progressed through Auckland District League, Wearside League, Northern League and the Football League line to the full list. Was senior linesman in the European Cup-winners' quarter-final in Yugoslavia in 1975 and the Wales v Northern Ireland Home International in 1976. Lined the Scotland v West Germany international in 1973, the FA Trophy final this year and was promoted to the FIFA panel this season. Married, he is a deputy headmaster of a primary school and keeps fit by playing league squash. Also plays golf and cricket.

CAPITALS denotes home games

[illegible]

CENTRAL LEAGUE 1977-78

		F	A	Pts
1977				
Aug.	20-BURNLEY	1	2	0
	27-Everton	2	1	2
Sept.	3-SHEFFIELD UTD.	0	4	2
	10-Nottingham F.	1	3	2
	13-LIVERPOOL	1	1	3
	17-WEST BROM. A.	1	0	5
	20-Huddersfield T.	2	2	7
	24-ASTON VILLA	2	0	9
Oct.	1-Stoke City	2	2	10
	5-Newcastle Utd.	1	1	11
	8-Preston N.E.	1	0	13
	18-WOLVES	1	0	15
	22-MANCHESTER C.	2	4	15
	29-Liverpool			
Nov.	5-COVENTRY CITY			
	12-Sheffield Wed.			
	19-DERBY COUNTY			
	26-Leeds Utd.			
Dec.	3-MANCHESTER UTD.			
	10-Blackburn R.			
	17-BURY			
	26-Blackpool			
	31-HUDDERSFIELD T.			
1978				
Jan.	2-Burnley			
	14-EVERTON			
	21-Sheffield Utd.			
Feb.	4-NOTTINGHAM F.			
	11-West Brom. A.			
	18-Aston Villa			
	25-STOKE CITY			
Mar.	7-PRESTON N.E.			
	11-Wolves			
	18-Manchester City			
	25-Bury			
	27-BLACKPOOL			
Apr.	1-Coventry City			
	4-SHEFFIELD WED.			
	8-LEEDS UTD.			
	15-Derby County			
	22-BLACKBURN R.			
	25-NEWCASTLE UTD.			
	29-Manchester Utd.			
Teams in CAPITALS Denote Home Games				

BOLTON WANDERERS SPONSORS

KIT SPONSORS —
CAMBRIAN SOFT DRINKS

Aug. 23 - Millwall	
Aug. 27 - Sheff. U.	Walkden Metals
Sept. 10 - Oldham A.	Walkden Metals
Oct. 1 - Stoke City	Walkden Metals
Oct. 4 - Blackburn R.	Walkden Metals
Oct. 15 - Mansfield T.	Walkden Auto Centre
Oct. 29 - Luton T.	Walkden Metals
Nov. 12 - Charlton A.	Walkden Auto Centre
Nov. 26 - Spurs	Walkden Metals
Dec. 10 - Cardiff C.	Walkden Metals
Dec. 26 - Notts. C.	Barrs
Jan. 2 - Burnley	Walkden Metals
Jan. 21 - Hull City	Walkden Auto Centre
Feb. 11 - Sunderland	Walkden Metals
Feb. 18 - Crystal P.	Michael Cull Ltd.
Mar. 4 - Brighton	Walkden Metals
Mar. 18 - Southampton	Walkden Metals
Mar. 25 - Blackpool	Walkden Metals
Apr. 1 - Bristol	Walkden Auto Centre
Apr. 15 - Orient R.	Walkden Metals
Apr. 29 - Fulham	Walkden Metals

**FOR SPONSORSHIP DETAILS
TELEPHONE: BOLTON 24518**

HALF-TIME SCOREBOARD

FIRST DIVISION

A—Arsenal v Birmingham
B—Aston Villa v Man Utd
C—Chelsea v Bristol City
D—Derby v Norwich
E—Everton v Newcastle
F—Ipswich v West Ham
G—Leicester v Leeds
H—Man City v Liverpool
I—Nottm Forest v Middlesbro
J—Q.P.R. v West Brom
K—Wolves v Coventry
L—

SECOND DIVISION

M—Brighton v Cardiff
N—Bristol Rov v Sthampton
O—Burnley v Blackpool
P—Crystal Pal v Charlton
Q—Hull v Blackburn
R—Mansfield v Notts Co.
S—Orient v Millwall
T—Sheffield Utd v Fulham
U—Stoke v Spurs
V—Sunderland v Oldham
W—
X—Wrexham v Bury

WANDERERS

Shirts: White

Shorts: Blue

1. McDONAGH, Jim
2. NICHOLSON, Peter
3. DUNNE, Tony
4. GREAVES, Roy
5. WALSH, Mike
6. ALLARDYCE, Sam
7. MORGAN, Willie
8. WHATMORE, Neil
9. TRAIN, Ray
10. REID, Peter
11. WORTHINGTON, Frank

Sub.:

LUTON TOWN

Shirts: Orange

Shorts: Blue

1. ALEKSIC, Melija
2. PRICE, Paul
3. BUCKLEY, Steve
4. WEST, Alan
5. FAULKNER, John
6. FUTCHER, Paul
7. HUSBAND, Jim
8. HILL, Ricky
9. FUTCHER, Ron
10. FUCCILLO, Pasquale
11. HEALE, Gary

Sub.:

Referee:

G. COURTNEY (Spennymoor)

RED FLAG

M. DARBY (Hyde)

YELLOW FLAG

G. K. PARRY (Maghull)

Today's match is sponsored by WALKDEN METALS



1876—1977

*Warburtons have been baking good bread and cakes
in Bolton for over 100 years*

Warburtons Bakeries, Hereford Street, Bolton

