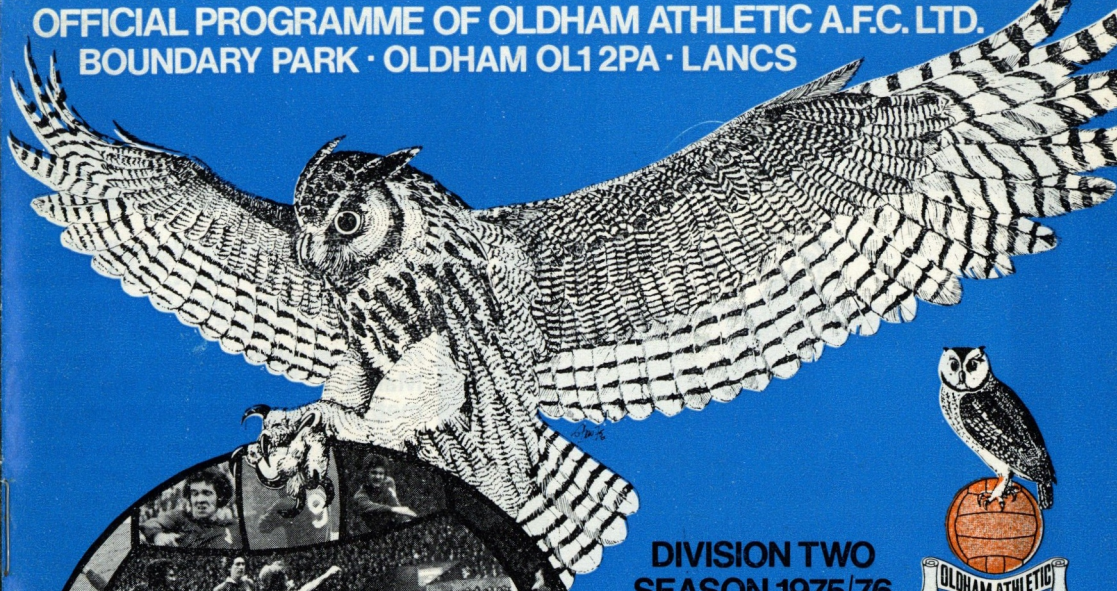


OFFICIAL PROGRAMME OF OLDHAM ATHLETIC A.F.C. LTD.
BOUNDARY PARK · OLDHAM OL1 2PA · LANCs



DIVISION TWO
SEASON 1975/76

ATHLETIC
v

LUTON TOWN

SATURDAY 21st FEBRUARY 1976

KICK-OFF 3-00 p.m.



ATHLETIC REVIEW

PRICE 10pence

OLDHAM ATHLETIC
A.F.C. LIMITED



Board of Directors:

H. WILDE (Chairman)
R. SCHOFIELD (Vice-Chairman)
G. T. BUTTERWORTH
G. A. HUDSON
J. KERSHAW
I. H. STOTT
E. SYKES
F. D. WHITEHEAD

General Manager/Secretary:

W. GRIFFITHS

Team Manager:

J. L. FRIZZELL

Assist. Secretary: T. FISHER

Physiotherapist: R. JAY

Club Doctor: R. B. HOLLOS

Promotions Manager: B. JOYCE

HONOURS LIST

Division 1: Runners-up—1914-15.
Division 2: Runners-up—1909-10.
Division 3: Champions—1973-74.
Division 3 (North): Champions—1952-53.
Division 4: Third (promoted)—1970-71.
Runners-up—1962-63.

Editor: S. Liversedge

Art Design: Comprehensive Art Services

Photographs: Oldham Chronicle (Edward Wooley) & County Press Photos, Wigan

R. H. H. Venables (Oldham Camera Club)

Print: L.V. Lawlor, Oldham

PLAYER PARADE

JIM BRANAGAN walked into the disco one night, and handed the cloakroom girl his coat . . . and from that casual meeting, romance blossomed. For on March 7, Jim marries the girl he met that night at the disco.

She is Carol Dixon, who comes from Irlam — and it will be a double celebration, when she and 20-year-old Jim marry, for March 7 will also be Carol's 20th birthday. And after the wedding, Jim and Carol will be setting up house in Peel Green.

Jim has known Carol about four years now, but he admits she still isn't a football fanatic—"although she goes to watch when I'm playing". But there was never any doubt in his mind about his own future career, which is not surprising, seeing that his Dad, Ken Branagan, played for Manchester City and Oldham.

Jim got a "recommend" to 'Latics via his father, and was invited down for a trial in the school holidays. He signed schoolboy forms as a 15-year-old, and graduated through the junior ranks and the youth team, to the point where he became a professional and has now made quite a number of first-team appearances.

"I've played about a dozen games for the first team this season, and my ambition is to nail down a regular place. If I can do that, I'll take things as they come," says Jim, who—not surprisingly, since he is a defender himself—admires players such as Manchester City's Mike Doyle, Liverpool's Emlyn Hughes, and Leeds United's Norman Hunter.

"Doyle and Hunter are men who are safe at the back, and Hughes—also a fine defender — enjoys going forward and having a crack at goal," says Jim.

Jim himself didn't see his Dad in action for Manchester City, though he

'MATCH OF THE DAY' MEANS IT'S WEDDING BELLS FOR CAROL AND JIM ON MARCH 7th

saw him playing a few times for Oldham, and modestly reckons: "I don't think I measure up to him yet . . . in fact, I don't know if I ever will."

But he's made a valuable contribution to the team effort at Oldham, and although he regards himself as a central defender, he has been known to go in search of goals. Jim says: "When I was playing for the school at Soccer, I played in defence, but in the Sunday League side for which I also played, I turned out at centre-forward."

Did he score many goals?—"Well, I got one or two . . . but as it was an open-age league, I collected kicks as much as anything else!" But since he joined 'Latics, he has been on the mark—five or six goals this season, "including a hat-trick in the second half of a match against Chester, when I went up front."

When Jim first joined Oldham, he started his career as a forward, but moved to the centre-back position after a few games; and he has shown he can do a useful stint at full-back, too.

Apart from Soccer, Jim enjoys playing squash, but admits he's no Jack Nicklaus when it comes to golf. "Pitch and putt is about my limit," he laughs. He enjoys listening to music—Soul and Tamla Motown are his favourites—and his idea of a good night out is going for a meal.

"I always have steak for my main course, after starting with soup, and I follow up with a sweet and maybe cheese and biscuits." If you're a weight watcher then you will envy Jim, for he adds: "I've no problems about putting on weight—I haven't put any on since I was about 16."



Welcome to

LUTON TOWN

HOW THEY BEGAN... AND WHAT THEY'VE DONE!

FOR the second home game in succession, we welcome to Boundary Park a team which last season was playing in First Division football. Like Carlisle, Luton went up to Division 1 on the heels of Middlesbrough, but while Boro' consolidated, Luton and Carlisle came straight back, along with Chelsea.

Luton have had their problems this season, notably when they hit financial trouble, and sold one of their stars, Peter Anderson, to Antwerp. But in recent weeks, they have been on the winning trail, and boosting their hopes of a quick return to the top flight.

Luton have had two men contesting the goalkeeping spot during the past season or so—**Graham Horn**, who saw service at Arsenal and Portsmouth, and who cost the Hatters a £25,000 fee, and **Keith Barber**, who was signed on professional forms in April, 1971, and received special League permission to play against Sheffield Wednesday three days later, although the transfer deadline had gone.

Luton, of course, also made headline news when they signed identical twins **Paul** and **Ron Fitcher** from Chester, in 1974. Paul cost £100,000, and has confirmed the big impression he made when he entered League football as a 16-year-old. Ron, too—who was regarded by many people as the "make-

UP AND DOWN BUT 'HATTERS' BID TO BOUNCE STRAIGHT BACK AGAIN TO THE FIRST DIVISION

weight" in the deal — has made his mark. He hit the winner on his First Division debut and a hat-trick in his second game!

There are other names who had sprung into prominence, even before they joined Luton. **John Faulkner**, for instance, was a defender with amateurs Sutton United when they met Leeds during their 1970 F.A. Cup run—and he was signed by Leeds. Injury hampered his career, but he has made the most of his chance since he joined Luton in 1972.

Bobby Thomson, who won eight England caps, had played 450 League games for four clubs by the end of last season, and his career goes back to season 1961-62, since when he has served Wolves, Birmingham, Walsall and Luton. And Manchester United supplied two players—**Jimmy Ryan** and **John Aston**. The latter, of course, starred in United's European Cup-final triumph against Benfica.

Lancashire clubs provided Luton with two more "name" players **Alan West**, who took over as skipper mid-way through last season, was signed from Burnley, and **Jimmy Husband** — like Alan, an England Under-23 player —

arrived from Everton. Luton paid a total of £150,000 for them.

Another costly signing was **Peter Spiring**, who had joined Liverpool from Bristol City, and who moved to Luton last season in a £70,000 deal; and from neighbouring Tranmere Rovers, Luton snapped up **John Seasman**. Manager Harry Haslam says: "Everyone thought I was after Steve Coppell, and Manchester United snapped him up, when they heard I was going. In fact, my interest was in Seasman, a young reserve-team player, who in my opinion, has even greater prospects." And Seasman was on the mark in his first full League game for Luton.

Spiring, incidentally, while still on Luton's books, has been on loan to Hereford, who are pushing for promotion from Division 3.

Brian Chambers started his career with Sunderland, then moved to Arsenal, but Luton stepped in to sign him after his first season at Highbury. And another player from the North-East, **Gordon Hindson**, grew up with Newcastle United, before moving to Luton in season 1971-72. He had a spell on

loan to Blackburn earlier this season.

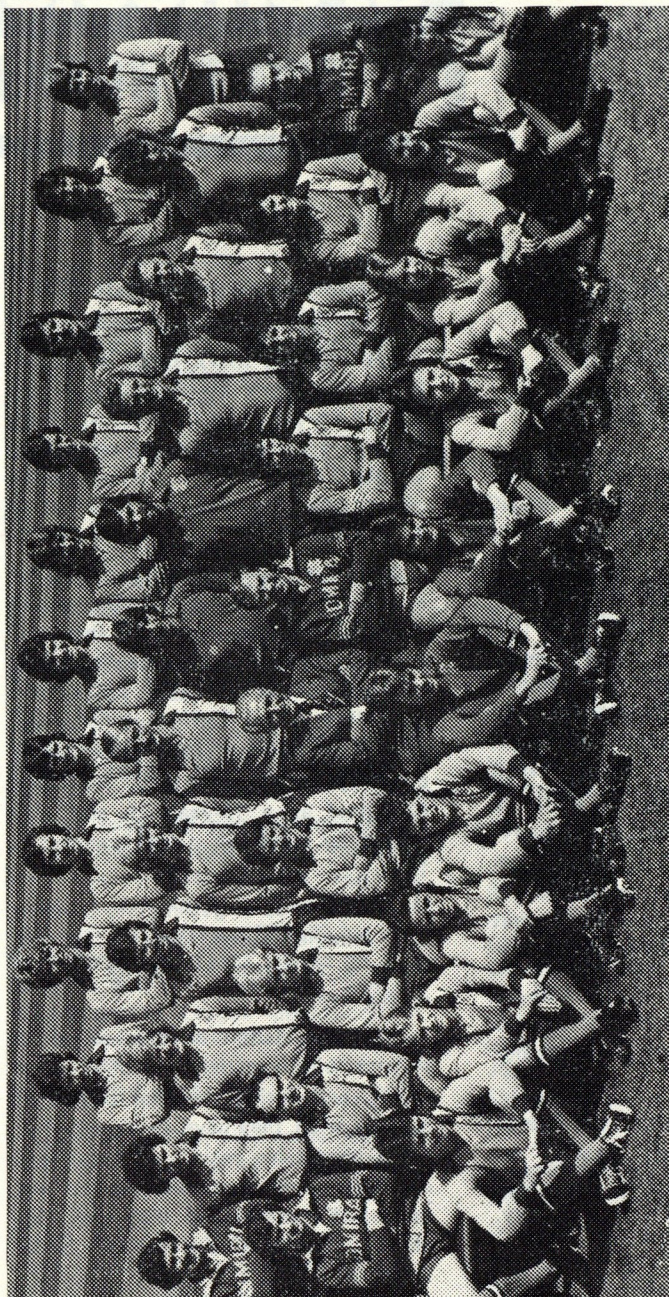
Luton haven't neglected home-grown talent, either. **Andy King** is Luton-born, and **Steve Buckley**, now in his second season as a first-teamer, came through a trial at Leicester so well in October, 1974, that he was given his chance and eventually kept Bobby Thomson out.

John Ryan made his League bow for Fulham in season 1967-68, but joined Luton just before the end of that season, since when he has been a regular member of the first-team squad, and **Steve Litt** is another player who has shown he can be relied upon, when called up for first-team duty. He joined Blackpool as a 16-year-old, and was signed by Luton on a free transfer in 1973.

He has hopes of getting into Division One whether Luton make it or not, for he is on loan to Arsenal for the rest of this Season.

All in all, Luton have a squad of players with experience and all-round ability, and during the past couple of months or so, they have strung together some impressive results, at home and on tour, to haul themselves up the table and raise hopes that they can claim one of the three promotion places. For them, as for us, victory in today's game could turn out to be worth four points.

Meet the men from Kenilworth Road



THIS IS LUTON TOWN, 1976: Back row (left to right)—Peter Mead, Alan West, Gordon Hindson, Jim Ryan, Peter Anderson (now with Anderlecht), Andy King, Pasquale Fucillo, Brian Chambers, Laurence Coyne, Matt Pollock. Second row—Danny Bergara (coach), Alex Malcolm, David Carr, Bobby Thomson, Paul Fletcher, John Faulkner, Keith Barber, Graham Horn, Steve Litt, Steve Buckley, Paul Price. Third row—David Pleat (coach), John Aston, Ron Fletcher, Peter Spiring, Harry Haslam (manager), Roy McCrohan (chief coach), Adrian Alston, Jimmy Husband, John Seaman, Reg Game (physiotherapist). Front row—Graham Jones, Wayne Morgan, Barry McHugh, Ian Donnelly, Tony Knight, Andy Roberts, Sandor Simon, Iain Stewart, Steve Russell, Tim Smith.

CANDID COMMENT

FOOTBALL is essentially a team game, but occasionally there comes a time when a particular player deserves to be singled out for special mention. Oldham have such a player in Ian Wood, and I make no apology for this special mention of him today — apart from anything else, he recently became the man who overhauled my own record of long service and appearances for the club.

I played for 'Latics from 1960 to 1969, and made more than 320 appearances; Ian has served the club more than 10 years now—he made his debut in 1965 against Queen's Park Rangers—and at Southampton, he set a new record with his 370th game.

Fourth, Third and Second divisions . . . he has taken them all in his stride; and I sincerely hope that before he has finished, he will help Oldham to achieve First Division status.

He is one of those players every manager likes to have: loyal, giving 100 per cent. consistently, and presenting no problems. A player it is good to have in the game itself.

Players like Ian tend to be overlooked in all the publicity which surrounds Soccer; and sometimes they tend to be taken for granted, as they appear week in, week out. Especially if they have signed as youngsters, and cost a club nothing.

Ian has scored a few goals for us as a centre-forward, played at inside-forward, in midfield and in both full-back positions. Once, in the days when

Joe Mercer was at Manchester City, Ian attracted from the Maine-road club —and later, after Malcolm Allison went to Crystal Palace, a £50,000 offer was tabled for him.

That offer was turned down, although it didn't prevent other clubs retaining an interest. He came into see me, when he read about the bid, heard my explanation of the situation — and that was it.

To be frank, Palace were not doing too well at the time, but in any event, I don't think Ian was breaking his neck to leave 'Latics. He accepted the situation . . . and he's still here.

I sincerely hope he remains an Oldham player for the rest of his career—just as I hope that Alan Groves stays, for although Alan is still on the list at his own request, he, too, is an asset to this club. And I would like to pay him a tribute for the way he has played for us, especially at Southampton, when he took some "stick" from opponents and fans alike.

As for our prospects for the remainder of the season, we cannot know what the future holds. But for their efforts to date, I believe all the players who have figured in the games this season deserve a pat on the back. We may not always have got the results we wanted—but the lads get full marks from me for trying?

MANAGER—
OLDHAM
ATHLETIC

Jimmy Frizzell

NEXT GAMES AT HOME

Saturday, February 28

BRADFORD CITY RES.

Kick-off 2.30 p.m.

Saturday, March 6

ORIENT

Kick-off 3.00 p.m.



ASHTON FURNISHING FOR FAMOUS NAME FURNITURE AT FAMOUS DISCOUNT PRICES

ASHTON FURNISHING CO LTD
1 KING STREET OLDHAM TEL 620 2484
Branches also at Ashton & Stockport

COURTLETS INSURANCE

BROKERS LIMITED

5, QUEEN STREET, OLDHAM OL1 1TH
TELEPHONE: 061 624 6063

SPECIALISTS IN:

- LIFE ASSURANCE
- MOTOR INSURANCE
- SELF EMPLOYED PENSIONS
- INVESTMENT ADVICE
- PERSONAL INSURANCES

Facilities at Lloyds and
with all major BIA Companies

**AGENTS FOR NATIONWIDE
BUILDING SOCIETY**

COURTLETS HOUSE
38 KING ST. WEST
MANCHESTER
M3 2WZ
Tel: 061
834 8552

COMPREHENSIVE ART SERVICES

Finished Art-Illustration
Graphic Design
Photography
Typography
& other
related
services!

**HATCH BALL DONATED BY
BOAT & HORSES**

BROADWAY, CHADDERTON
Tel: 681 2363

OLDHAM

JOHN PLATT
IAN WOOD
MAURICE WHITTLE
GRAHAM BELL
PAUL EDWARDS
KEITH HICKS
RONNIE BLAIR
ALAN YOUNG
DAVID SHAW
IAN ROBINS
ALAN GROVES
To be announced

LUTON TOWN

KEITH BARBER
2 JOHN RYAN
3 STEVE BUCKLEY
4 BRIAN CHAMBERS
5 JOHN FAULKNER
6 PAUL FUTCHER
7 JIMMY HUSBAND
8 ANDY KING
9 RON FUTCHER
10 ALAN WEST
11 JOHN ASTON
12 JIMMY RYAN

REFEREE

K. H. BURNS

**EVENING
CHRONICLE
SPORT FINAL
for all
sport**

KICK-OFF 3-00 PM

LINESMEN

G. W. HESPE
RED FLAG

S. LEAVER
YELLOW FLAG

CABARET:
FRIDAYS &
SATURDAYS.
MODERN & OLD TYME
DANCING-WEDNESDAY & SUNDAYS

LATE
LICENCE
FRIDAYS &
SATURDAYS.
ROOM AVAILABLE
FOR PRIVATE PARTIES
ON CERTAIN NIGHTS.

The Latics Boundary Club

TELEPHONE: 061 624 1051



GEORGE HILL

(OLDHAM) LIMITED

**TIMBER MERCHANTS &
WALLBOARD DISTRIBUTORS**

Imported softwoods, hardwoods
plywoods, formica, mouldings, doors,
dowels. Stockists of Weyroc,
interwoven fencing and Asbestolux.

Saw, Planing and Moulding Mills
SCOTTFIELD SAW MILLS

OLDHAM

Telephone: 061 652 7421

NEW BRANCH AT GLEBELANDS RD/SALE
TELEPHONE 061 969 7543

F.D. WHITEHEAD BUILDING SERVICES LTD.

CHADDERTON OLDHAM

**COMPLETE DESIGN
BUILDING & FURNISHING
SERVICE**

**SPECIALISTS IN ALL TYPES
OF CLUB BUILDING WORK**

Tel: 061 624 9737/3343.

BOAT & HORSES

— BROADWAY — CHADDERTON —

COLD TABLE, a la Carte

Monday—Friday 12 noon to 3 p.m.

★ Reception Room for 60 persons

Reservations 061-681 2363

AA Registered — Diners Club
American Express, Access.

Your Hosts:

Mike and Jean Healey

★ SPORTS REQUIREMENTS

GILBERTS

WATER LANE, WILMSLOW

Telephone: 29221/2

Bramhall Centre - Bramhall

Telephone: 439 7394

Suppliers of kit to leading teams
including OLDHAM ATHLETIC

★SEND FLOWERS ANYWHERE! ANYTIME!
through . .

HILTON'S

" Your Teleflower Florist "

Telephone: 624 6110

113 UNION STREET WEST and
188 HUDDERSFIELD ROAD, OLDHAM

★ Fresh Flowers! Fruit and Vegetables
Daily. Buy the Best! We Do!

YOUR LOCAL SUPPLIER OF ALL
REFRIGERATION REQUIREMENTS
DISPLAYS, COLDROOMS,
HOME FREEZERS

● SALES AND SERVICE

E. JORDON

(Refrigeration) LTD.

REFRIGERATION CENTRE
MOUGH LANE, CHADDERTON

H.P. RENTALS AND LEASING FACILITIES
Telephone: 681 3549 and 7031

A WIN EVERY TIME THAT'S WHY . . .

BUTTERWORTH'S

ARE TOP OF THE LEAGUE

Quick Cafe or Take-out Service

Phone : 624 4402

★ Oldham's Leading
Fish and Chip Cafeteria

Dinners Daily 11.30 to 2 p.m.

Tea Friday 4 p.m. to 7 p.m. Seating for 100

FURNISHERS

R. SCHOFIELD & SON

14/16, 27/29 OLD ROAD

FAILSWORTH, MANCHESTER

Telephone: 061-681 2292

PENNINE PETROLEUM PRODUCTS

Authorised
Distributors



67 UNION STREET . OLDHAM

Telephone: 061-624 1332 (Depot)
061-624 4489 (Accounts)

WATSON'S STORES

Pay a visit to Lancashire's leading
Carpet Specialists and safeguard
your own interests by comparing
our prices and qualities.

FIRST-CLASS FITTING SERVICE

Estimates Free

Any Distance

NO "FREE" GIFTS OR GIMMICKS

GLODWICK ROAD . OLDHAM

Telephone 061-633 2461

LOOKING AT LATICS...

LOOKING AT LATICS...

● WHILE Manchester City and Newcastle United are battling away in the Final of the Football League Cup at Wembley next Saturday, another Cup-tie will be going on not so far away, at Selhurst Park—and the result of this game will be awaited at Oldham just as keenly as the outcome of the Wembley duel is scanned by the partisan fans of the respective rivals there.

● FOR next Saturday, 'Latics tackle Crystal Palace in the quarter-final of the F.A. Youth Cup, and it's another tremendous challenge to our youngsters, who have already overcome formidable hurdles such as Manchester City and Liverpool.

● THERE will be a new name on the trophy this season, in any event, for the holders Ipswich were knocked out on their own Portman-road ground by West Brom . . . who now entertain Manchester United, on March 9.

● ALSO still going strong in the competition are teams from other First Division clubs—Newcastle United and Queen's Park Rangers, for instance. Newcastle are away to Bristol City, and Rangers are at home to the winners of last Wednesday's Wolves-Spurs replay at Molineux.

● IT MIGHT be felt that a First Division background makes the contenders from Old Trafford and St. James's Park, favourites to take the trophy, but there have been upsets in Cup competitions before — even at Wembley.

● IN 1973, Second Division Sunderland accounted for giants such as Manchester City and Arsenal, before beating favourites Leeds in the F.A. Cup final itself — and in this season's Youth Cup, Bristol City ended Sunderland's interest with a 6-2 replay victory.

● AND WEST BROM, who can claim Coventry among their victims, have seven players in their reserve side, so they can have high hopes of ending Manchester United's run.

● AS FOR Oldham, our youngsters are under no illusions about the task which faces them at Selhurst Park; but if they needed any inspiration, they have only to look at the opposition. For it was Crystal Palace who went to Leeds and inflicted an F.A. Cup knock-out blow a few weeks ago . . . So we say to our youngsters: "Carry on Cup-fighting"—and we know that YOU'LL be willing them to win through, as well.

?????? LATICS QUIZ ??????

1. The last time Luton Town played at Wembley was in the 1959 F.A. Cup final. Who were their opponents?

2. In Luton's side that day was a player who now manages a famous Northern First Division club. Can you name him?

3. Luton lost that final—and one of the scorers for the winning side manages a non-League team which hit the headlines in this season's F.A. Cup competition. Can you name the man, and the club he now manages?

4. Luton manager Harry Haslam played for Gillingham — and for a famous Lancashire club. Can you name this club?

5. Before joining Luton, he managed three clubs outside the League, then joined the scouting staff of a London

club. Can you name two of those clubs?

6. Luton are known as "The Hatters"—but did their players ever wear head-gear?

7. Have Luton ever played in the Fourth Division?

8. Luton took the place of Bolton, when they gained election to the Second Division. Later, they dropped out, and another Lancashire club got in. Can you name the club?

9. It was 1920 before Luton regained League status . . . in which league did they play, in the meantime?

10. Which club escaped the drop by a point, when Luton, Carlisle and Chelsea were relegated last spring?

● Answers on Page 13.

LOOKING AT LATICS...

FIXTURES

RESULTS

ATTENDANCES

HOW THEY STAND...

GAMES AND GOALS

| | | result | attend. |
|---------|---------------------|---------|---------|
| Aug. 16 | Bristol Rovers | H W 2-0 | 6,993 |
| 19 | Workington (LC1) | H W 3-0 | 4,486 |
| 23 | Blackburn R. | A L 1-4 | 12,688 |
| 26 | Workington LC1 | A W 3-1 | 1,472 |
| 30 | Hull City | H W 1-0 | 6,382 |
| Sept. 6 | Blackpool | A D 1-1 | 8,826 |
| 10 | Aston Villa LC2 | A L 0-2 | 23,202 |
| 13 | Chelsea | H W 2-1 | 10,416 |
| 20 | Portsmouth | A D 1-1 | 8,079 |
| 27 | Plymouth A. | H W 3-2 | 8,226 |
| Oct. 4 | West Brom A. | A D 1-1 | 10,606 |
| 7 | Bristol City | H L 2-4 | 9,572 |
| 11 | York City | H W 2-0 | 8,704 |
| 18 | Charlton A. | A L 1-3 | 8,582 |
| 21 | Southampton | H W 3-2 | 11,219 |
| 25 | Notts Forest | H D 0-0 | 11,619 |
| Nov. 1 | Orient | A L 0-2 | 4,576 |
| 4 | Carlisle Utd. | A L 1-2 | 6,389 |
| 8 | Oxford Utd. | H D 1-1 | 8,051 |
| 15 | Luton T. | A W 3-2 | 8,237 |
| 22 | Charlton A. | H W 2-0 | 8,067 |
| 29 | Sunderland | A L 0-2 | 28,220 |
| Dec. 6 | Fulham | H D 2-2 | 8,726 |
| 13 | Blackburn R. | H W 2-1 | 10,289 |
| 20 | Bristol R. | A L 0-1 | 7,371 |
| 26 | Bolton W. | H W 2-1 | 25,137 |
| 27 | Notts County | A L 1-5 | 14,706 |
| Jan. 3 | F.A. (3) Sunderland | A L 0-2 | 29,226 |
| 10 | Chelsea | A W 3-0 | 16,346 |
| 17 | Blackpool | H W 1-0 | 11,730 |
| 31 | Southampton | A L 2-3 | 14,324 |
| Feb. 7 | Carlisle United | H D 2-2 | 8,850 |
| 14 | Oxford Utd. | A D 1-1 | |
| 21 | Luton Town | H | |
| 24 | Bristol City | A | |
| 28 | Notts Forest | A | |
| Mar. 6 | Orient (6) | H | |
| 13 | York City | A | |
| 20 | Sunderland | H | |
| 27 | Fulham | A | |
| Apr. 3 | Plymouth A. | A | |
| 10 | Portsmouth | H | |
| 16 | Hull City | A | |
| 17 | Bolton W. | A | |
| 19 | Notts County | H | |
| 24 | West Brom A. | H | |
| May 1 | FA Cup Final | | |

Copyright of The Football League

| | | |
|---------|---------------------|---|
| Aug. 16 | Everton "A" | A |
| 23 | S. Liverpool Res... | H |
| 30 | Chester "A" | A |
| Sept. 6 | Crewe A. "A" | H |
| 13 | Man. Utd. "A" | A |
| 20 | Blackpool "A" | H |
| 27 | Liverpool "A" | A |
| Oct. 4 | Tranmere R. "A" | H |
| 11 | Rochdale Res. | A |
| Nov. 1 | Everton "A" | H |
| 8 | Man. City "A" | A |
| 15 | Southport Res. | H |
| 29 | Altrincham Res. | H |
| Dec. 6 | Southport Res. | A |
| 13 | S. Liverpool Res... | A |
| 20 | Liverpool "A" | H |
| 27 | Chester "A" | H |
| 17 | Tranmere R. "A" | A |
| 24 | Altrincham Res. | A |
| 31 | Mac'field T. Res... | H |
| Feb. 7 | Stockport C. "A" | A |
| 14 | Rochdale Res. | H |
| 21 | Bradford C. Res. | A |
| 28 | Bradford C. Res. | H |
| Mar. 6 | Crewe A. "A" | A |
| 20 | Blackpool "A" | A |
| 27 | Stockport C. "A" | H |
| Apr. 3 | Man. City "A" | H |
| 17 | Man. Utd. "A" | H |
| 24 | Mac'field T. Res... | A |

Reserve Appearances

Platt (12), Branagan (11), Duddy (17), Barrett (18), Hoolickin (13), Hicks (4), McVitie (7), Mullington (12), Dungworth (18), S. Edwards (18), Carroll (16), Roberts (11), Young (8), Little (1), Wood (1), Hewitson (18), P. Edwards (7), Valentine (14), Ogden (7), Steel (2), Moran (1), Booth (1), Robins (2), Jones (6), Johnson (2), Seddon (1), Hall (1), Keenan (1), Taylor (1), Webster (1), Holt (1), Shelley (1), McNair (2), Pritchard (2), Riley (1), Baison (1).

| result | LEAGUE TABLE—DIVISION TWO |
|--------|-----------------------------------|
| D 1-1 | P W D L F A Pts |
| W 3-2 | Bolton W. 27 15 8 4 45 24 38 |
| W 2-0 | Bristol C. 29 14 10 5 45 24 38 |
| W 6-1 | Sunderland 27 16 4 7 41 24 36 |
| W 5-1 | Notts. County 28 14 7 7 39 24 35 |
| W 7-0 | West Brom 28 12 10 6 30 25 34 |
| W 4-3 | Southampton 27 14 5 8 48 33 33 |
| W 9-1 | Luton T. 28 13 6 9 41 32 32 |
| W 3-2 | OLDHAM ATH. 29 12 8 9 43 44 32 |
| L 0-1 | Bristol Rovers 29 9 12 8 28 29 30 |
| W 4-1 | Fulham 27 10 9 8 35 29 29 |
| W 11-0 | Carlisle 29 9 9 11 29 37 27 |
| W 5-1 | Nottm Forest 28 9 8 11 32 28 26 |
| P | Chelsea 28 9 8 11 34 38 26 |
| W 2-1 | Blackpool 28 9 8 11 26 34 26 |
| W 4-0 | Orient 26 8 9 9 22 24 25 |
| L 0-2 | Plymouth 30 9 7 14 35 42 25 |
| W 5-2 | Blackburn 28 7 11 10 27 31 25 |
| | Charlton 26 10 5 11 35 43 25 |
| | Hull C. 28 9 5 14 29 36 23 |
| | Oxford 28 5 10 13 27 39 20 |
| | Portsmouth 29 5 6 18 19 42 16 |
| | York C. 29 5 5 19 24 52 15 |

The man in the middle

REFEREE Ken Burns, from Dudley, is one of the most experienced officials in the game, with international and European matches, and an F.A. Cup final behind him. A League referee for 15 seasons, he has been on the F.I.F.A. panel six years and the U.E.F.A. panel five years. A former president of the Association of Football League Referees and Linesmen, he is current president of the Referees' Association. Married, with two daughters, Mr. Burns is a legal executive, and his interests include cricket, golf, tennis and snooker.

Quiz Answers

1. Nottingham Forest. 2. Billy Birmingham. 3. Roy Dwight, now in charge of Tooting and Mitcham. 4. Harry Haslam played for Manchester United 5 He managed Barry Town, Merthyr Tydvil and Tonbridge, was on Fulham's scouting staff. 6. Yes—in the early days, Luton wore navy-blue and pink halved shirts, with caps to match. 7. Yes—they've played in all four divisions. 8. Blackpool. 9. The Southern League. 10. Tottenham had 34 points, Luton and Chelsea 33 apiece, and Carlisle 29.

LEAGUE APPEARANCES (including substitutions)

Ogden (16), Wood (25), Whittle (26), Blair (24), Hicks (18), Holt (25), Edwards (18), Bell (27), Jones (15), Chapman (28), Groves (29), Robins (24), Young (18), McVitie (10), Branagan (11), Platt (13), Shaw (16), Carroll (2).

GOALSCORERS

Whittle (5), Jones (7), Blair (4), Groves (1), Robins (4), Wood (2), Shaw (9), Chapman (2), McVitie (1), Bell (1), Hicks (1), Young (4), 1 o.g.

AWAY WE GO

AFTER Bristol City on Tuesday, it's Nottingham Forest next Saturday, on the A627/A6081 via Ashton-under-Lyne and Stalybridge to Glossop, junction A624, and A624 via Hayfield to Chapel-en-le-Frith, junc. A623. Then A623 via Peak Forest to Baslow, junction A619, A619/A617 via Chesterfield to Heath, junction M1, and M1 south to intersection 26, junction with A610. Along A610 to junction A614 (Nottingham ring road) and A614 to Nottingham.

Turn right at ring road, continuing for 2½ miles through three roundabouts to Queen's drive (fourth roundabout), where you turn left. Along Queen's drive to next roundabout, taking second exit, then right at 'T' junction into A52 (Arkwright-street), left into Kirke White and Cattle Market-road, and the ground is at the junction of Colwick-road/Pavilion-road.

Half-time Scoreboard

Division One

ARSENAL v BIRMINGHAM
ASTON VILLA v. MAN. UTD.
LEEDS U. v. MIDDLESBRO'
LEICESTER C. v. SHEFF. U.
LIVERPOOL v. NEWCASTLE
MAN. CITY v. EVERTON
NORWICH C. v. COVENTRY
QUEEN'S PARK R. v. IPSWICH.....
STOKE C. v. TOTTENHAM
WEST HAM U. v. DERBY C.
WOLVES v. BURNLEY

Second Division

BLACKBURN v. PORTSMOUTH.....
BRISTOL C. v. NOTTM. F.
CARLISLE U. v. BOLTON W.
HULL CITY v. WEST BROM
NOTTS CO. v. CHELSEA
SOUTHAMPTON v. ORIENT
SUNDERLAND v CHARLTON

OUR CHANCE TO DO THE DOUBLE

● WITH six home games and seven away matches to go, Oldham, as manager Jimmy Frizzell realistically concedes, must rate the chances of claiming a top-three promotion place an outside one. But we have learned some lessons—and gained real hope for the future.

● PEOPLE may look back and say, "If only . . ." If only 'Latics had won at Oxford and beaten Carlisle here, and picked up a point at Southampton, we would have been within striking distance of the top—three points adrift of Bolton, instead of six.

● NO-ONE has been saying, "If only . . ." more than Sunderland manager Bob Stokoe, this season—and his team have never been out of the promotion race. Yet though Sunderland remain favourites to go up, even now there are doubts — because of their away record.

● OF THE top eight teams, Sunderland have the third-worst away record . . . three wins, seven defeats. Little wonder Bob was saying, after the fifth-round F.A. Cup draw at Stoke: "I'm hoping this result will spark us off so that we get results in the League."

● HE knows what a hard slog it can be, to climb out of the Second Division. When he took over at Sunder-

land, they lay 20th in the table; they went to Wembley and won the F.A. Cup and finished sixth in Division 2. But three years later, they are still striving to make the breakout.

● WHILE Bolton and West Brom have won seven games away, and Bristol City and Notts County six apiece, while Luton can claim five wins on tour, Oldham—like Southampton—lag behind even Sunderland, with two away victories. And eight defeats.

● YET our scoring record compares favourably with most of the seven clubs above us, especially at home. Only Southampton (34) and Sunderland (32) have scored more goals than ourselves; and away, we are ahead of them clubs and West Brom. It's the "goals against" column that tells the story.

● EVEN SO, we have ended that jinx of not being able to win away, and our most recent games, at Oxford, Southampton and Chelsea, show we are on the right track. We drew at Blackpool, Portsmouth, West Brom . . . and our win at Luton ended that jinx and gives us the chance today to achieve our second double of the season. So there IS real hope that we can build from here.

SHOP TALK...

IT'S SALE TIME

AT THE SOUVENIR SHOP

There is one word which everyone uses these days and that's **INFLATION**. To put it in simple terms it means prices go up and up. It appears everywhere you go. There is one place where that word hardly exists and that's at the club shop.

If you have shopped around then you will know that our prices are low, but now its sale time at the shop and prices are lower than ever, on these four selected items:

SILK/WOOL SCARVES

WERE £1.30 NOW ONLY £1.00

SHOP TALK...

ALBUMS (AUTO/PICS)

WERE £1.00 NOW ONLY .75p

CALENDARS

WERE .50 NOW ONLY .40p

BEER TANKARDS

WERE .90 NOW ONLY 80p

These prices have hit rock bottom they will never be as cheap again, so buy now and save yourself some money while supporting your club. Come and look at these items and see the quality. We give you only the best and we give you prices to suit your pocket.

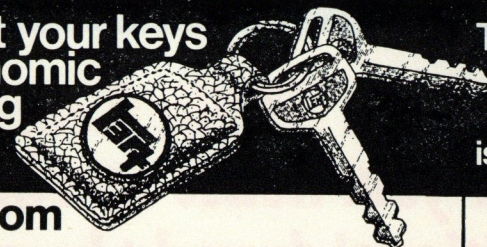
Sale extended to March 20th

OLDHAM ATHLETIC SUPPORTERS' CLUB

"SOCCER QUEEN" COMPETITION, 1976

TICKETS for this event are 75p, and can be obtained from any of the Oldham Athletic offices. The function will also feature three first-class cabaret acts, and there will be dancing, and snack refreshments.

Get your keys
to economic
motoring



TOYOTA
The only trouble
you'll have
is choosing

from

21 MUMPS OLDHAM

FAILSWORTH MOTOR SALES

AREA DEALERS FOR

TOYOTA

The cars with both performance and economy
that give you comfortable reliable motoring
There is a car to suit everyone. From the 1000cc
Toyota to the 2600s, and commercial vehicles too.

Call and see our complete range

IMMEDIATE DELIVERY
ON MOST MODELS

Tel:- 061-633 0217,
681 2202

Showroom Hours:-
Monday to Friday 10am to 7pm
Saturday 10am to 5pm
Sunday 11am to 4pm

Service and Parts
Departments at
Hardman St.
Failsworth

(right opposite Broadway Club)

GOLDEN GOAL

*Next Home
Match is*
Y

the last letter to make

W E M B L E Y

BUY BUY BUY

Your Golden Goal

Tickets

NOW NOW NOW

The **FIRST TWO** persons

to present a **FULL** set

at the **Main Office**

will receive

the **Wembley Tickets**

**TRY
SOMETHING
FRESH
EVERY DAY**

Choose

Warburtons
Oldham's favourite baker

There's a John Willie Lees House near your house serving traditional draught beer...

Albion Inn, Drury Lane, Hollinwood.
 Angel Inn, Shaw Road, Royton.
 Assheton Arms Hotel, Market Place,
 Middleton.
 Bank Top Tavern, New Street, Oldham.
 Black Horse Hotel, Rochdale Road,
 Shaw.
 Black Swan Hotel, Bottom o'th Moor,
 Mumps, Oldham.
 Boarshaw Hotel, Stanycliffe Lane,
 Middleton.
 Boat & Horses Hotel, Whitegate Lane,
 Broadway, Chadderton.
 Boundary Inn, Shaw Road, Oldham.
 Bowling Green Inn, Bowling Street,
 Hollinwood.
 Britannia Inn, Manchester Old Road,
 Middleton.
 Carters Arms, Manchester Old Road,
 Rhodes, Middleton.
 Commercial Hotel, West Street,
 Oldham.
 Cotton Tree Inn, Boarshaw Road,
 Middleton.
 Cross Keys Inn, Church Lane,
 Uppermill, Saddleworth.
 Crown Inn, Rochdale Road, Middleton.
 Dicken Green Hotel, Queensway,
 Rochdale.
 Dog & Partridge Inn, Roundthorn Road,
 Oldham.
 Dog & Partridge, Middleton Road,
 Royton.
 Duke of York Inn, Heyside, Royton.
 Falconers Arms, Falcon View,
 Copster Hill, Oldham.
 Gardeners Arms, Grimshaw Lane,
 Middleton Junction.
 Gardeners Arms, Sandy Lane,
 Middleton.
 Grey Horse Inn, Oldham Road,
 Failsworth.
 Greyhound Inn, Elly Clough,
 Holden Fold, Royton.
 "The Greengate", Acacia Road,
 Limeside, Oldham.
 Halfway House, Rochdale Road,
 Royton.
 Hare & Hounds, Block Lane,
 Chadderton.

Hare & Hounds, Higginshaw Road,
 Higginshaw.
 Hare & Hounds, Rochdale Road,
 Middleton.
 Horton Arms, Streetbridge, Chadderton.
 Hunt Lane Tavern, Middleton Road,
 Chadderton.
 The Haggate, Middleton Road, Royton.
 Jolly Carter, Oldham Road, Middleton.
 Junction Inn, Rochdale Road,
 Denshaw.
 Junction Inn, Grimshaw Lane,
 Middleton Junction.
 Lancashire Fold, Kirkway, Alkington,
 Middleton.
 Middleton Archer, Kemp Street,
 Middleton.
 Morning Star, Grains Road, Shaw.
 Minders Arms, Joshua Lane,
 Middleton Junction.
 The Nowster, Oldham Road,
 Middleton.
 Old Cock Inn, Oldham Road, Middleton.
 Plough Inn, Chadderton Way, Oldham.
 Puckersley Inn, Narrowgate Brow,
 Royton.
 Radclyffe Arms, Radclyffe Street,
 Oldham.
 Railway & Linnet, Grimshaw Lane,
 Middleton Junction.
 Railway Hotel, Oldham Road, Royton.
 Rifle Range Inn, Burnley Lane,
 Chadderton.
 Ring O'Bells, St. Leonard's Square,
 Middleton.
 Rose of Lancaster, High Lane,
 Chadderton.
 Royal Oak Hotel, Boarshaw Road,
 Middleton.
 Spinners Arms, Woodbrook Road,
 Springhead, Oldham.
 White Hart Inn, Rochdale Road,
 Middleton.
 Who'd a Thowt It, Wood Street,
 Middleton.
 Woodhouse Gardens, Medlock Road,
 Woodhouses, Nr. Failsworth.
 Woodman Inn, Manchester Road,
 Hollinwood, Oldham.
 Weavers Arms, Huddersfield Road,
 Oldham.