



NOTTINGHAM FOREST
versus
LUTON TOWN

FOREST REVIEW



6p

The Official Programme of Nottingham Forest Football Club

ATURDAY, 25th AUGUST, 1973

Kick-off 3 p.m.

A Season of Destiny

by Mr. J. H. WILLMER

Today sees the beginning of the 1973/74 season which we commence in the Second Division as aspirants for promotion to the highest sphere in League football and all efforts must be made to that end. I am taking the opportunity of recording herein what I have already expressed to those concerned who have a responsibility towards the future destiny of the club.

It is the beginning of Dave Mackay's first full season with the club and what I said about him at the time of his arrival at the City Ground still holds good and events so far have upheld those observations. It is not my intention to comment on anything that happened before his arrival. To him personally, and to all the members of his staff, I express the sincere hope that their efforts will be rewarded by the success that I am so certain they will have justifiably deserved by the end of the season.

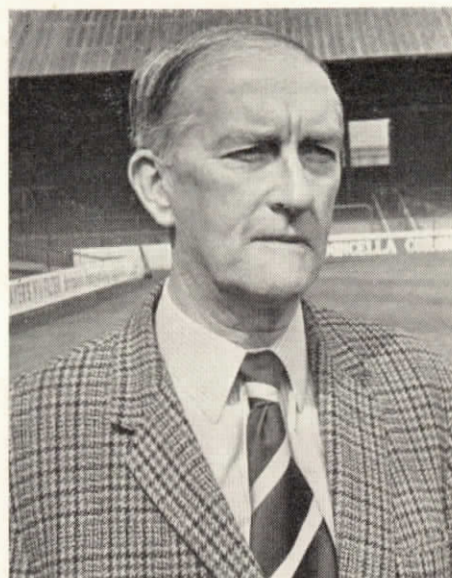
In the playing staff we have a body of professionals whom I feel will respond to the energetic determination of the staff to provide them with every facility and give them every encouragement to produce satisfactory results.

We are all aware that ultimate success depends on what happens on the field of play. The desire of every player must be to play in a First Division side and, insofar as our lads are concerned, may I say to them that I trust that by your collective efforts you achieve First Division status with this club by the end of this season. I wish you a happy season and may the results and your efforts be individually both successful and rewarding.

Everyone else employed by the club will, I am sure, perform their varying duties in a manner which will give the players the necessary backroom support to their efforts.

The Committee will do everything possible to engender a spirit of wellbeing in the club and to ensure that our relationship with the public, press, and correlated bodies and the media generally is maintained on a jointly co-operative basis beneficial to all concerned.

Success cannot be guaranteed but I reiterate what I have said previously that I am satisfied that we have a manager, staff and players who I am confident will do everything possible to achieve success by gaining promotion to the First Division both for their own



personal satisfaction and for the good of the club, and on the road to achieving success may you, our supporters, benefit by seeing entertaining matches at the City Ground which bring the desired results.

In conclusion, may I suggest that the great effort which has to be made should not come exclusively from the club but that those who are the club, especially the players, should receive every encouragement and support from you, especially by your presence at the City Ground during what we hope will be a happy season.

James H. Willmer

NOTTINGHAM FOREST FOOTBALL CLUB



(Founded 1865)

CITY GROUND
NOTTINGHAM
Tel. 868236

President: Mr. G. N. Watson, J.P.
Chairman: Mr. J. H. Willmer
Vice-Chairman: Mr. B. J. Appleby, Q.C.
Committee: Messrs. H. W. Alcock, F.C.A., J. Glenn, H. Levey,
A. E. Chambers, S. M. Dryden, J.P. G. E. Macpherson, J.P.,
G. T. Thorpe
Manager: Mr. D. C. Mackay
Secretary/Treasurer: Mr. K. Smales
Hon. Consulting Surgeon: Mr. J. P. Jackson, F.R.C.S.
Medical Officer: Dr. A. H. MacLaren, M.B., Ch.B.
Deputy Medical Officer: Dr. I. Loch, M.B., Ch.B., M.R.C.S., L.R.C.P.

Honours: F.A. Cup Winners—1898 and 1959. First Division Runners-up—1966/67. Second Division Champions—1906/07 and 1921/22. Runners-up—1956/57. Third Division (South) Champions 1950/51.

Platform

CITY GROUND TALKING POINT COLUMN

by KEN SMALES

Nice to see everyone back for the opening of this new season.

A season promising much and in which we welcome "newcomers" Division Three champions Bolton Wanderers and runners-up Notts. County. From the First Division we shall be renewing acquaintance with Crystal Palace and West Bromwich Albion.

These four clubs have replaced promoted Burnley and Queen's Park Rangers and relegated Huddersfield Town and Brighton & Hove Albion.

Next year the list of changes will be greater than ever before in the history of the Football League as three clubs will now be promoted and three relegated from the Second Division, following the change in regulations at the Annual General Meeting of the Football League. This will make the Second Division a real "melting pot" with six clubs out of the 22 leaving the section at the end of the season.

Yes, with the local derby games with Notts. County back in the fixture list for the first time since 1956/57, this is a season which promises a lot of interest and increasing excitement as the weeks roll by.

At club level we were delighted to regain the County Cup and did it the hard way with two away victories. This means we shall be staging the final at the end of the season with Mansfield and Notts. playing each other for the right to challenge us.

The youth team gave a pleasant reminder that they were still very much around when news filtered through of their defeat of Coventry City in the final of the Bremen International Youth Tournament. This trip provided the opportunity of giving competitive trials to some youngsters and three of these have since signed as apprentice players. In addition to the tournament proper, we were required to play two other matches against "open ages" local amateur teams, F.C. Lunestaldt and F.C. Rotenburg. We beat the former 1-0 but were held to a 3-3 draw by the Rotenburger (!!). Our young left back Viv Anderson was awarded the "Best Player of the Tournament" trophy. Well done, Viv!

Four players represented the club in a sports quiz challenge organised by "Nottingham Sport" in the first of what is hoped will be an annual

event. Dave Serella, George Lyall, Duncan McKenzie, and John Robertson produced the right answers to defeat a team from Notts. County.

The seniors competed in the Port Wine Trophy competition in June having been invited to join three Portuguese First Division teams, Benfica (including Eusebio), Boavista and Oporto. We did not win the trophy but made many friends and the visit to Portugal will have given our younger players much valuable experience which should prove of great benefit to them in this new season.

The Chairman's report, presented to the Members of the club at the Annual Meeting, showed a working loss on last season of £107,568. This was slightly reduced by the club receiving £10,000 more in transfer fees than was spent but how long can losses of this magnitude continue? Our average league attendance figures revealed a drop from 21,433 to 9,995 and an overall deficit of 236,634 spectators. It reminded me of a remark once made by Eric Taylor, general manager of Sheffield Wednesday, who said that their supporters just "ran away" when they were relegated.



Follow Forest

OXFORD UNITED v. FOREST (Saturday, 1st September, 1973)

A648 through Clifton to the M1 Motorway Intersection at Lockington (11 Miles).

M1 South for 48 miles to Intersection (16) Northampton, Daventry, A45 (59 Miles).

A45 to Road Weedon. Turn left along the A5 to Towcester, then right along the A43 via Silverstone and Brackley to the roundabout junction with the Oxford By-pass. Turn left along the A423 and 1½ miles on turn left along the A40 following signs "High Wycombe". At 3¼ miles on at roundabout turn right along the A420 to—

OXFORD UNITED FOOTBALL GROUND (104 Miles).

R.A.C. members requiring personal and prompt service for any motoring matter should apply to R.A.C. County Office, 21 Gregory Boulevard, Nottingham. Telephone 63331.

AROUND^AN^DABOUT

SENIOR CITIZENS—there is now a turnstile sited on the Riverside for your use. A reduced admission charge of 25p (including VAT) will help in a small way to relieve the financial burden of the pensioners.

Anniversaries today, 25th August...

1956—Jim Barrett scored all three goals in our 3-1 win over Fulham in the first home game of our promotion season. He had already scored twice in the away win over Leyton Orient (4-1) and another two in the victory over Bristol City away (5-1) thus making seven goals for him in our first three matches.

1964—We lost to Everton (0-1) at Goodison Park before a big crowd of 53,526 with the following team. Grummitt, Wilson, Grant, Newton, McKinlay, Whitefoot, Crowe, Addison, Wignall, Barnwell, Hinton.

The appointment of Paul White to the post of assistant secretary was announced after last Thursday's committee meeting. Paul is a former professional player with us and retired in June, 1971 when he accepted an appointment in the club office.

We welcome as our guests today the winners of consolation prizes in our "Design a Badge" competition. May we take this opportunity to thank them and all the other entrants to this most successful competition. The response was terrific.

New players to join us for this season are: Steve Peplow (former Liverpool and Swindon Town player), Jim Day (East Bridgford), Robert Turnbull (Edinburgh), and Ken Bryce (Glasgow). We shall be supplying further details of these players in due course.

As forecast in the Middlesbrough "Review" last season, wedding bells duly rang out for assistant coach Colin Murphy and his bride Judith on Sunday, 12th August. May we take this opportunity of wishing them every happiness.

NOTTINGHAM
FOREST F.C.

This Token must be
cut out and affixed
to the Official Token
Sheet.



Two senior players, now no longer with us, are Tommy Gemmell who went to Dundee on a free transfer, and Doug Fraser who was transferred to Walsall for a small fee. Tommy made 42 appearances scoring six goals since his first game against Arsenal at the City Ground on 27th December, 1971. Doug made 97 appearances and scored four goals. His first game for us being against Newcastle United on 16th January, 1971. The photograph above shows Tommy and George Lyall watching Doug Fraser retrieving the ball from the 10th hole at Chilwell Manor Golf Club. Tommy incidentally knocked his three-footer in to collect the money.

Congratulations to Mr. Jack Levey on his election as life vice-president of the Midland Intermediate League. Mr. Levey has been a member of that League's Management Committee for several years but had to resign because of our withdrawal from the league.

The maintenance of football grounds is a costly business and, with gates down to their present level, is proving almost prohibitive. However a certain amount of work has to be done and this close season we have painted the Trent Stand at a cost of £2,000. Of course we could have left it to the "aerosol paint-spraying gang" but they don't bother to prime it first!

Jackie Sewell, the former Notts. County, Sheffield Wednesday, and England inside-forward called in to see us during the summer, having returned from Zambia where he has been living for a good number of years. Jack went out as national coach but latterly was working for the Ford Motor Co. He met our Youth team in Lusaka and wanted to renew acquaintance with Bert Johnson, Alan Hill, and Ken Smales.

Welcome to Luton



LUTON TOWN FOOTBALL CLUB

Founded: 1885.
Manager: Mr. Harry Haslam.
Secretary: Mr. Bob Readhead.
Club Address:
Kenilworth Road, Luton.
Record attendance: 30,069
v. Blackpool, F.A. Cup 6th
Round, 1959.
Honours:
Division Two Runners-up
1954/55.
Division Three Runners-up
1969/70.
Division Four Champions
1967/68.
Division Three (South)
Champions 1936/37.
Runners-up 1935/36.
F.A. Cup Runners-up 1959.
Unique Record:
Joe Payne scored 10 goals
for Luton Town against
Bristol Rovers in 1936/37,
a league record.

Ten-Year League Record:

Season	Div.	Pos.	W	F	A	Pts
1972/73	2	12th	15	44	53	41
1971/72	2	13th	10	43	48	38
1970/71	2	6th	18	62	43	49
1969/70	3	2nd	23	77	43	60
1968/69	3	3rd	25	74	38	61
1967/68	4	1st	27	87	44	66
1966/67	4	17th	16	59	73	41
1965/66	4	6th	24	90	70	56
1964/65	3	21st	11	51	94	33
1963/64	3	18th	16	64	80	42

Harry Haslam holds high hopes for the "Hatters"!

FRUSTRATING is a word that adequately describes last season's campaign for Luton Town, who finished the season in the Second Division in 12th position, whilst gaining 41 points from 42 games. Their away record, until the latter part of the season was outstanding and probably the best in the country for their first 10 away games produced seven victories and one draw... an amazing record. Unfortunately, from their point of view, their home record was extremely mediocre. At one stage they played 10 consecutive league games at Kenilworth Road without a win.

In common with many league clubs, they were confronted with the problem of not possessing at least one prolific goal scorer. Their most successful forward was Vic Halom with 10 goals, and he was transferred to Sunderland midway through the term! Incidentally, his tally was identical to that of their previous season's top scorer, Peter Anderson.

When considering the above facts, it is reasonably obvious to deduce that all the "Hatters" need to be candidates for promotion is a team capable of producing consistent and outstanding displays, and to include in its ranks a regular goal scorer!

The man faced with this difficult task is Harry Haslam, the present club manager and their former chief scout. This is his first complete season in the managerial chair, and he would obviously like it to be one to remember, preferably for reasons beneficial to both Luton Town and himself.

He will probably be hoping that Barry Butlin, whom he signed from our neighbours Derby County for a £50,000 fee in November, 1972, will prove to be the marksman he needs for it is a position that has not been adequately filled since the £100,000 plus departures of Bruce Rioch (to Aston Villa) and Malcolm MacDonald (to Newcastle United). Last season, Butlin netted four goals in 11 games for the "Hatters", a reasonably promising introduction into their senior team and he also played a prominent part in Town's

extended F.A. Cup run which ended in a 6th round defeat at Roker Park by Sunderland, the eventual trophy winners.

The corresponding game last term between ourselves and Town was played early in the season on 9th September, our fourth home game in fact. John Aston scored the game's only goal for Luton in the first half inflicting our first home defeat of the campaign. The attendance for the game was 9,133. Town went on to complete the double over us on 27th January, 1973 when winning the game at Kenilworth Road by an identical score (a goal by Alan Slough in the second half) before a crowd of 10,983.

Luton Town are one of the few clubs in the Football League to have, in recent years, plunged headlong from the upper to the lower regions of the Football League. In 1958/59 they were members of the First Division and played in the F.A. Cup Final against... Nottingham Forest. The following season they were relegated to the Second Division, in which they enjoyed only moderate success, and subsequently again suffered the indignity of relegation three seasons later. Their "downhill path" then saw them further slide into the Fourth Division at the end of season 1964/65 when they finished in only fourth position from the bottom of the Third Division table and so were again relegated.

During this dismal and frustrating period in their long history they appointed Mr. Alec Stock to the position of manager in 1968. It was then that the club's fortunes began to slowly improve culminating with heading the Fourth Division in 1967/68, and promotion from the Third Division at the end of season 1969/70, and so rapidly progressing back to the Second Division!

Possibly it is a little ungenerous when we emphasise that we hope they do not begin their quest for glory with a victory here today. That, we hope, will be reserved for ourselves as we commence this very important season, and our vital quest for an ultimate return to the First Division!

LUTON TOWN PEN PICTURES



● JOHN RYAN

KEITH BARBER (goalkeeper) : He was signed by Town, after playing in London senior football, and was then loaned to the Southern League team Dunstable Town. He became Luton's regular first team 'keeper last season, making 42 league and cup appearances.

GRAHAM HORN (goalkeeper) : A former England Youth goalkeeper, he was signed from Arsenal in February for £25,000. Made his debut against Millwall on 24th February and is now competing for the first team spot with Keith Barber. 19 years of age and standing over six feet, he made five league appearances last season.

JOHN RYAN (defender) : Although he usually plays at right back, he is equally dependable in almost any position. A vastly improved player, his senior career began at Fulham over four seasons ago. 45 senior appearances last season.

BOBBY THOMSON (defender) : A very experienced player and an England international, he is now the

Luton captain, and was voted their "Player of the Year" for last season. He commenced his career with Wolves, eventually moving to Birmingham City in exchange for a £60,000 fee. Luton subsequently signed him on a free transfer from the St. Andrews club. Was the only ever-present in the "Hatters" side in the last campaign.

DON SHANKS (defender) : He's a former England Youth international, and a highly promising young player who commenced his career, as an apprentice, at Fulham. Established himself in the first team midway through last season to finish with 27 appearances.

JOHN FAULKNER (centre-half) : He received recognition and publicity after playing magnificently for Sutton United against Leeds United in the 1971/72 F.A. Cup tourney. He was soon recruited to the Elland Road staff but never really settled and Town signed him for a fee of £6,000 in March of last year.

ALAN GARNER (centre-half) : For the majority of last season this young defender was competing for a senior place with Faulkner. Commenced his soccer career with Millwall, but only played two senior games before receiving a free transfer and joining the Town playing staff.

KEN GOODEVE (defender) : Another former Manchester United player who joined Town three years ago, and is on the fringe of securing a regular position in the first team. The majority of his nine senior appearances were made towards the end of the '72/73 campaign.

JOHN MOORE (defender) : Has almost completed nine years service with Town since his transfer from Motherwell. He made 18 appearances for the first team last season and is now the club's longest serving player.

PETER ANDERSON (midfield) : Whilst playing for Hendon, his local team, he was recommended to the "Hatters", who promptly signed him. An attacking midfield player, he was still an amateur when making his debut for Town. He played in 34 senior games last term.

JIM RYAN (winger) : He's a former Manchester United player who moved to the "Hatters" some three years ago in a £20,000 transfer deal. A very speedy player, he possesses good ball control, and is one of the few Scots on our visitors playing staff.

GORDON HINDSON (forward) : Although he had only seven appearances to his credit with Newcastle United, he was signed by Town for a fee of £25,000 in October, 1971. A strong and speedy forward, he won himself a regular place towards the end of last season.

BARRY BUTLIN (centre-forward) : One of the club's most expensive signings, he cost £50,000 when moving from Derby County almost a year ago. His career at Kenilworth Road received a tremendous start when he scored in each of his first three games but a recurrence of an old knee injury caused him to miss the latter part of last season.

RODNEY FERN (forward) : A talented but unpredictable player, he was signed from Leicester City for a substantial fee just over a year ago. His impact at Luton was not as impressive as was anticipated and he only appeared in 26 games whilst netting five goals.

PETER CRUSE (forward) : Joined the "Hatters" recently from Arsenal, where he didn't quite make the senior team, on a free transfer, and will obviously be challenging for a first team place.

JOHN ASTON (winger) : Another Manchester United player, he cost a similar fee to that of his United team-mate Jim Ryan. He is probably best remembered for a superb performance for the "Red Devils" at Wembley in 1968 when they beat Benfica in the European Cup Final. Played with great success for Luton last season and quickly became a firm favourite of the Town fans.

● The Luton Town playing staff and officials are pictured below :

Back Row (left to right) : Billy Holmes, Alan Slough (now with Fulham), Jimmy Ryan, Paul Price, Viv Busby (now with Fulham), John Faulkner, Ken Goodeve, Peter Cruse, Phil O'Connor.

Middle Row : Rodney Fern, Ken Whitfield (coach), Alan Garner, John Moore, John Ryan, Stephen Litt, Graham Horn, Keith Barber, Barry Butlin, Peter Anderson, Graham French, Ray King (coach), Nicholas Sparks, Roy McCrohan (chief coach).

Front Row : Reg Game (physiotherapist), Bobby Thomson, Alec Malcolm, Vince Melisi, Harry Haslam (manager), Derek Hales (now on loan to Charlton Athletic), Gordon Hindson, Don Shanks, John Aston.



The sign of



HOME BREWERY

Fine Ales

TOYS AND GAMES - GREETING CARDS

Fountain Pens, Ball Pens by Parker, Platignum, etc.,

Pen Sets and Stationery

EVERYTHING TO PLEASE AT . . .

TEMPLE PRINTING (Nottm.) LTD.

CARRINGTON STREET - NOTTINGHAM

(opposite the new Broad Marsh Bus Station)

» TRENT EXCURSION

Associated with the National Bus Company

OXFORD UNITED

Depart Victoria Bus Station 10.30 a.m.

Fare 95p return

HUNTINGDON STREET, NOTTINGHAM

Tel. 51271-6

Enquiries Telephone 53041

SHIPSTONE
of
NOTTINGHAM

**Brewers for
over a
century**

**FOLLOW YOUR
TEAM BY**



SKILLS

29—57 seater Luxury Coaches available
for hire. Anytime—Anywhere. Quota-
tions gladly given for your next outing.

ST. PETERS STREET, NOTTINGHAM
TELEPHONE 74645

F. SISSON & SONS LTD.

Nottingham Forest

Red Shirts, White Shorts

1. JIM BARRON
2. LIAM O'KANE
3. JOHN WINFIELD
4. DAVID SERELLA
5. JOHN COTTAM
6. TOMMY JACKSON
7. DUNCAN McKENZIE
8. MARTIN O'NEILL
9. NEIL MARTIN
10. GEORGE LYALL
11. MIAH DENNEHY
12. JOHN GALLEY

Scorers

Referee :

Mr. R. E. RABY
(Leeds)

Scorers

Luton Town

White Shirts, Blue Shorts

1. KEITH BARBER
2. DON SHANKS
3. BOBBY THOMSON
4. PETER ANDERSON
5. JOHN FAULKNER
6. ALAN GARNER
7. JIM RYAN
8. JOHN RYAN
9. BARRY BUTLIN
10. PETER CRUSE
11. JOHN ASTON
12. To be announced

Linesmen :

Mr. W. L. ASHTON
(Derby) (Red Flag)
Mr. B. C. SPOFFORD
(Birmingham) (Yellow Flag)

**EVENING
POST**
To SELL or BUY
TELEPHONE
CLASSIFIEDS
40181

STATION RD., LANGLEY MILL, NOTTM.

TELEPHONE: LANGLEY MILL 2171/2

PRIVATE & PUBLIC WORKS CONTRACTORS

Fully Licenced Restaurants.
Open Daily for Luncheons.

First Class Catering.
Ample Car Park Facilities.

**COMMODORE
BANQUETING ROOMS**

NUTHALL ROAD, NOTTINGHAM

CATERERS TO

NOTTINGHAM FOREST FOOTBALL
CLUB and CENTURY RESTAURANT
Notts. County Cricket Ground, Trent Bridge

These rooms available for functions of all kinds

For details ring 71746 (Nuthall Road); 866224 (Trent Bridge)

**HAVE
YOU
JOINED YET?**
THOUSANDS HAVE
NOTTINGHAM
BUILDING SOCIETY

HEAD OFFICE: 22 FRIAR LANE, NOTTINGHAM. TELEPHONE: 40751

**JOHN
WHITE**

**Makers of
Rogues ..
the leisure
shoes for
today's
man**

See the full range at

FOOTWEAR Dept
(2nd Floor)
CO-OPERATIVE HOUSE
Upper Parliament St.
Nottingham

**co
op**

GREATER
NOTTINGHAM
CO-OPERATIVE
SOCIETY LTD

RAMBLINGS OF A FOREST PROGRAMME COLLECTOR

by PETER F. TOZER

BRASS

The collecting "bug" hits most of us at some time, whether it be collecting beer mats (or beer), matchbox or cheese labels or even money. In my case it's collecting Forest programmes, which forms a logical stepping stone to a deeper understanding of the game of soccer.

SOCCER WANDERINGS

My soccer wanderings began towards the end of the 1940's and, for many years, my travelling needs were catered for by the Headquarters of the Forest Sportsmen's Club. These trips were usually organized by George, and I also recall many others such as Fred, Margaret, Ted and Marjorie, together with Pat from Langham, near Oakham, who was picked up on trips to the South.

Robin Hood supplied the coaches, along with some friendly and responsible drivers like Archie, Charlie and Claude. What happy days they were.

RAPID GROWTH OF COLLECTION

Collecting programmes from these matches had not occurred to me then, and even now I am still on the look-out for several of them.

The collection grew rapidly with contemporary items once I did start, and then A. J. Turner's admirable Centenary Handbook was published. This whetted my appetite for earlier material, and after making numerous

contacts the pre-war items began to assemble.

Now I have over 1,200 home and away since the war, and nearly 100 before, dating back to 1884—the present programme being, in my opinion, one of the finest we have produced.

I have made contact with many old supporters who have discovered their programmes in the oddest places—attics, garages, discarded suitcases, etc., and I often spend happy hours with these veterans whilst they walk in "memory's garden".

Although I prefer a programme to be unmarked, I do get copies with team alterations, match scores and, sometimes, hardly printable written comments—after all, the Reds didn't always play well!

VINTAGE COPIES

Now a few notes on the style of the Forest programme over the years. The earliest item in my collection is for a match against Walsall Swifts in 1883/84, and as a matter of interest the team was: Sands, Hancock, Caborn, Ward, Billyeald, Norman, Fox, Earp, Lindley, Fletcher and Leighton. Park Side was the venue and the crowd was in the region of 1,000.

This programme consisted of a single card $4\frac{1}{2}" \times 6\frac{1}{4}"$, but by 1884/85 it was folded down the middle with an extra page pasted in, and the size increased to $5" \times 7\frac{1}{2}"$. I have a copy for the game with Great Lever (a Bolton side of some standing at that time).

The club had now moved to Trent Bridge and the team was: Daft, Caborn, Hancock, Pike, Billyeald, Norman, Fox, Danks, Tutin, Leighton and Unwin. Forest won 3-2.

In this period both Forest and Notts. employed the same printer (G. Richards, Greyhound Street) and the format was identical—each club publishing the others fixtures in addition to its own. This style continued at least until the 1890's as I have seen a photostat of an item from that era.

A gap in home match programmes occurs in my collection until just after the first world war when a single-sheet "Card of the Match" was the norm. Printed on, naturally enough, rather poor quality unsurfaced card the printer was C. H. Richards of Lower Parliament Street, presumably associated with the former mentioned person.

1919 LEAGUE CHAMPIONSHIP FINAL

The size now was $9\frac{1}{2}" \times 5\frac{1}{2}"$ and among several specimens, the best is that for the League Championship Final at the City Ground in May, 1919 when Forest, as champions of the Midland section, met Everton, champions of the Lancashire section over two legs, of which this was the first.

Forest drew this game, and the team was: Hardy, Bulling, Jones, Lowe, Wightman, Armstrong, Birch, Shea, Tinsley, Burton and Martin.

The old Welbeck Hotel was one of the advertisers on this card, offering not only a Table D'hôte

luncheon at 2s.6d., but also a motor garage, good stabling and a billiards room.

Music was provided at the game by the 1st Cadet Battalion Band of the Sherwood Foresters who obliged with two selections, an overture, a march and a valse, together with threats to march round the ground at half-time playing "Colonel Bogey".

In the second leg at Goodison Forest, who were considered the underdogs, surprised everyone but themselves by winning with a Noah Burton goal scored just before the interval.

Unfortunately the Nottingham public remained largely aloof to this really splendid effort. The "Journal" reported that on the Sunday the players "arrived at Victoria Station in the afternoon and dispersed very happy with themselves and the world at large, even if there was no big crowd to welcome them in and to rejoice with them". Is there

anyone still watching the Reds who can remember this event?

THE PROGRAMME GROWS AND GROWS

By 1920/21 the club programme was beginning to "up-date" itself, having 12 pages, size $7\frac{1}{2}" \times 10"$, a pink cover headed "The Nottm. Forest News & Official Programme" and sporting an illustration of Robin Hood in the top left-hand corner. The majority of this cover was devoted to a local brewery advertisement, in fact a cover "Ad" was the Forest policy until the 1957/58 season commenced.

Barnes and Humby, of Peck Lane, St. Peter's Gate had commenced the printing contract and a long association had begun.

During '20/21 season, in particular, the programme appeared to be largely subsidised by the advertisers,

so that consequently information was at a premium although the "Editor's Notebook" was a readable feature. "Forest Chatter" too, was a handy little fill-up on the fixtures and scorers page, a typical item being "The Reds have only twice failed to score at home this season. Let it be the last time. We don't want all the good marksmanship to be exhibited for the benefit of other clubs' supporters. They don't appreciate it like we should".

On the back inside cover for the Rotherham County fixture a full length article appeared featuring Joe Johnson, the 'keeper who replaced Sam Hardy when he left for the Navy during the war. These articles were to continue for several seasons.

The Forest team to entertain Rotherham in 1920/21 was: Bennett, Bulling, Barratt, Belton, Parker, Armstrong, Harrold, Spaven, Bedford, Higgins and Lythgoe.

To be continued

Join THE Winning Team!.. JOIN THE MEN IN MODERN MINING

There are VACANCIES for SKILLED & SEMI-SKILLED MEN at most local collieries, also APPRENTICESHIPS and Training Schemes for boys under 18 years of age.

Apply for details of jobs and career opportunities to: Mr. I. SMITH, Head of Manpower, National Coal Board, South Notts. Area, Bestwood, Nottm. Tel. Nottm. 278861



VICTORY CHAMPIONS 1918/19

Back Row (left to right): T. Holford, J. Mills, H. Bulling, H. Lowe, S. Hardy, J. Jones, H. Wightman, P. Barratt, J. Armstrong, W. Tinsley.

Sitting: J. Rawson (committee), R. G. Marsters (secretary), J. Birch, D. Shea, T. Gibson, N. Burton, H. Martin.

FACTS and FIGURES

FOOTBALL LEAGUE — DIVISION TWO

Date	Opponents	Att.	F. A.
1973			
Aug. 25	Luton Town ...		
Sept. 1	Oxford United ...		
8	Sheffield Wed. ...		
11	Hull City ...		
15	Albion ...		
18	Swindon Town ...		
22	Preston North End ...		
29	Bolton Wand. ...		
Oct. 2	Swindon Town ...		
6	Millwall ...		
10	League Cup, 2nd Round ...		
13	Orient ...		
20	Blackpool ...		
23	Hull City ...		
27	Aston Villa ...		
31	League Cup, 3rd Round ...		
Nov. 3	Crystal Palace ...		
10	Fulham ...		
17	Carlisle United ...		
21	League Cup, 4th Round ...		
24	(1) Sunderland ...		
Dec. 1	Portsmouth ...		
8	Cardiff City ...		
15	(2) Middlesbrough ...		
19	League Cup, 5th Round ...		
22	Bolton Wand. ...		
26	Notts. County ...		
29	Sheffield Wed. ...		
1974			
Jan. 1	Oxford United ...		
5	F.A. Cup, 3rd Round ...		
12	Albion ...		
16	League Cup, Semi-Final ...		
19	Luton Town ...		
23	League Cup, Semi-Final ...		
26	F.A. Cup, 4th Round ...		
Feb. 2	Middlesbrough ...		
9	Preston North End ...		
16	(5) Orient ...		
23	Millwall ...		
Mar. 2	Notts. County ...		
Mar. 2	League Cup Final ...		
9	(6) Aston Villa ...		
16	Blackpool ...		
23	Fulham ...		
30	(S.F.) Crystal Pal. ...		
April 6	Sunderland ...		
12	Bristol City ...		
13	Carlisle United ...		
16	Bristol City ...		
20	Cardiff City ...		
27	Portsmouth ...		
May 4	F.A. CUP FINAL ...		

Forest Review page twelve

CENTRAL LEAGUE

Date	Opponents	F. A.	Date	Opponents	F. A.
1973			1974		
Aug. 28	Manchester U. ...		Jan. 5	Manchester U. ...	
Sept. 1	Sheffield U. ...		8	Wolves ...	
4	Everton ...		15	Huddersfield ...	
15	Wolves ...		19	Blackburn R. ...	
29	Derby County ...		26	Everton ...	
Oct. 2	Aston Villa ...		Feb. 5	Derby County ...	
9	Bury ...		9	Bury ...	
13	Liverpool ...		19	Liverpool ...	
20	Stoke City ...		23	Blackpool ...	
27	Leeds Utd. ...		Mar. 5	Manchester C. ...	
31	Blackburn R. ...		9	Leeds Utd. ...	
Nov. 3	Newcastle U. ...		23	Bolton W. ...	
6	Huddersfield ...		30	Newcastle U. ...	
10	Bolton W. ...		April 6	Burnley ...	
13	Coventry City ...		13	Sheffield W. ...	
17	Sheffield W. ...		20	Preston N.E. ...	
24	Burnley ...		27	Albion ...	
Dec. 1	Albion ...				
8	Preston N.E. ...				
14	Manchester C. ...				
18	Blackpool ...				
26	Coventry City ...				
29	Aston Villa ...				

To be arranged:
Stoke City (away)
Sheffield United (home)

MIDLAND YOUTH LEAGUE

Date	Opponents	F. A.	Date	Opponents	F. A.
1973			1974		
Sept. 5	Albion ...		21	Bristol City ...	
12	Aston Villa ...		28	Swindon T. ...	
18	Birmingham C. ...				
26	Coventry C. ...		Jan. 23	Albion ...	
Oct. 3	Leicester C. ...		30	Aston Villa ...	
8	Northampton ...		Feb. 6	Birmingham C. ...	
17	Notts. County ...		13	Coventry City ...	
24	Wolves ...		20	Leicester City ...	
29	Oxford United ...		27	Northampton ...	
Nov. 7	Wolves ...		Mar. 4	Notts. County ...	
18	Oxford United ...		13	Bristol City ...	
			19	Swindon T. ...	

ADVANCE TICKET BOOKINGS

OXFORD UNITED	HULL CITY
Saturday, 1st September,	Tuesday, 11th September
Stand Seats : 75p and 85p.	Stand Seats : £1, 70p and 60p.
Now available.	
Apply to :	Now available.
Manor Ground	Apply to :
Beech Road	Boothferry Park
Headington, Oxford	Hull HU4 6EU

Division Two Statistics

1972-73 FINAL TABLE

	P	W	D	L	F	A	Pts.
Burnley	42	24	14	4	72	35	62
Queen's P.R.	42	24	13	5	81	37	61
Aston Villa	42	18	14	10	51	47	50
Middlesbrough	42	17	13	12	46	43	47
Bristol City	42	17	12	13	63	51	46
Sunderland	42	17	12	13	59	49	46
Blackpool	42	18	10	14	56	51	46
Oxford United	42	19	7	16	52	43	45
Fulham	42	16	12	14	58	49	44
Sheffield Wed.	42	17	10	15	59	55	44
Millwall	42	16	10	16	55	47	42
Luton Town	42	15	11	16	44	53	41
Hull City	42	14	12	16	64	59	40
FOREST	42	14	12	16	47	52	40
Orient	42	12	12	18	49	53	36
Swindon Town	42	10	16	16	46	60	36
Portsmouth	42	12	11	19	42	59	35
Carlisle United	42	11	12	19	50	52	34
Preston N.E.	42	11	12	19	37	64	34
Cardiff City	42	11	11	20	43	58	33
Huddersfield	42	8	17	17	36	56	33
Brighton	42	8	13	21	46	83	29

1972-73 Leading Scorers :

Fletcher (Burnley)	15
Givens (Queen's P.R.)	23
Graydon (Aston Villa)	9
Hickton (Middlesbro')	13
Gow (Bristol City)	12
Hughes (Sunderland)	15
Ainscow (Blackpool)	10
Curran (Oxford United)	13
Earle (Fulham)	15
Joicey (Sheffield Wed.)	15
Bolland (Millwall)	19
Halom (Luton Town)	10
Pearson (Hull City)	17
Galley (Forest)	6
Fairbrother (Orient)	11
Treacey (Swindon)	13
Piper (Portsmouth)	8
Laidlaw (Carlisle Utd.)	14
Bruce (Preston)	13
McCulloch (Cardiff City)	14
Gowling (Huddersfield)	17
Beamish (Brighton)	9

THE DIVISION'S ATTENDANCES 1972-73

	Best	Average		Best	Average
Aston Villa	38,637	27,689	Middlesbrough	23,853	10,418
Blackpool	25,277	10,781	Millwall	13,207	10,265
Brighton & Hove	18,699	14,167	Nottingham Forest	18,082	9,995
Bristol City	20,490	12,892	Orient	10,532	6,449
Burnley	22,896	14,083	Oxford United	13,412	9,197
Cardiff City	26,000	11,456	Portsmouth	16,419	9,477
Carlisle United	17,842	7,606	Preston North End	18,822	10,199
Fulham	17,576	10,266	Queen's Park Rang.	22,518	14,715
Huddersfield Town	12,840	8,175	Sheffield Wed.	31,197	17,591
Hull City	13,580	9,232	Sunderland	43,265	22,602
Luton Town	15,799	10,643	Swindon Town	15,304	10,267

Highest Attendance

Sunderland v. Queen's Park Rangers, 43,265

Lowest Attendance

Huddersfield Town v. Luton Town, 3,871

Biggest Wins

Carlisle 6, Preston North End 1
Hull City 6, Preston North End 2
Blackpool 6, Brighton & Hove 2
Portsmouth 5, Preston North End 0
Queen's P.R. 5, Portsmouth 0
Queen's P.R. 5, Swindon Town 0

WHY NOT MAKE SURE YOU GET THE "FOREST REVIEW" ON YOUR BREAKFAST TABLE

There is an easy way of doing this with our postal scheme. This ensures that the "Review" arrives at your home on the morning of the match.

If you wish to have the publication posted to you, send in an application with £2.10p to cover the cost and postage of the 21 League match issues to—"Forest Review", Carrington Publications Ltd., 20 Carrington Street, Nottingham.

THE 1973-74 PROGRAMME TOKEN SCHEME

Tokens will again be included in each issue of the first team "Forest Review" during the current season.

A numbered Token will appear, as before, in the "Review" published for all first team matches during the season and full information about the scheme appears on the Collection Sheet which is included in today's issue of the "Review" for the game versus Luton Town and in the next issue for the match against Sheffield Wednesday. A Collection Sheet is needed in which the Tokens are stuck, in order as they appear. These Sheets may be called in at any time during the season and may well afford regular supporters who buy the "Review" to participate in special arrangements regarding tickets.

IT IS IMPORTANT TO NOTE THAT THE ACTUAL COLLECTION SHEET WILL NOT BE INCLUDED IN EVERY "REVIEW" ALTHOUGH THE TOKENS WILL.

Tokens are not valid unless correctly stuck on the Collection Sheet so make sure you get and keep the Sheet included in the "Review" this afternoon.

Warning from Redmaynes

adidas the world famous '3-striped' soccer shoes should only be worn by the best players on the field, and not by 'Forest' supporters. However, adidas suggest that if you must wear the famous '3-striped' sports equipment, that you contact Redmayne & Todd Ltd., Carrington Street, Nottingham (official suppliers to Nottingham Forest F.C.) who stock the full range of adidas sports and recreation clothing and equipment.

REDMAYNE & TODD—YOUR LOCAL ADIDAS STOCKIST.



Nottingham Forest Development Association

WHY NOT BECOME AN AGENT ?

Win Prizes for your Friends and Yourself

THE TARGET ?

Just 10 members and you become an Agent. A V.I.P. SUPPORTER who gets many privileges and incentives.

INTERESTED ?

Then complete the form below and post to—
The Organiser,
Nottingham Forest Development Association,
City Ground, Pavilion Road,
Nottingham NG2 5FJ

Name

Address

Pools ☐

Bingo ☐

(Please tick preference for either or both)

FOR THE THRILL OF A LIFETIME
COME and WATCH SENSATIONAL

BOMBER CAR RACING

including the First
British Semi-Final Team Race
Loughborough Legends
v. Loughborough Outsiders
at LONG EATON STADIUM
(½-way Nottingham-Derby)

TONIGHT, 25th AUGUST
at 7.30 p.m.

Admission 40p, Children 20p
(including VAT)

Large Free Car Parks.

Licensed Bars. Refreshments.

Save Money with a Season Ticket !

If you intend coming to the City Ground regularly but have not yet bought a season ticket please think again about taking one out.

Not only are the savings considerable but you will be able to have a seat of your choosing rather than take a chance on what is available on a match to match basis.

Most of the "C" and "D" block seats have been sold but there are some left with an excellent view in the Main Stand at £15 (including VAT). There are also some available in the centre of the East Stand at £12 (including VAT).

Of course you may prefer to stand and we do cater for the regular supporter by issuing season tickets for the Terrace and Enclosure.

Why not buy a season ticket—just contact the office where all information can be obtained.

We shall give advance details of ticket availability for away games in the "Review" but please note we do not have any away league match tickets— it is necessary for you to write to the club concerned.

SPORTSMEN'S CLUB NEWS

Nottingham Forest Social Club F.C. is about to commence its third season with a team entered in Junior Division Two of the Notts. Sunday League Morning Section and are willing to consider new players. Anyone who feels that they would like to play for us should visit the Social Club on Pavilion Road where they will be given more details.

FOR SALE

We have recently received a letter from Miss Redhead of Heanor, Derbys. who has made, and is consequently trying to sell, two very pleasant Forest mascots. The mascot is a "dog-cum-bear" character almost two-feet tall and fully fitted in the club's colours. Each mascot is stuffed with kapok and made in a polyester material. His appealing face is made of felt, with a stuffed tartan cap perched on his head and he's wearing a scarlet crimplene shirt with the club's name embroidered on his chest. A white tape around the neckline completes the shirt, whilst the elasticated shorts are also made of crimplene. To complete this "kit" he is wearing white knitted socks and black leatherette boots complete with studs and scarlet taped laces. Each mascot costs £3, and anyone interested should contact Miss Redhead at 13 Church Street, Heanor, Derbys.

NOTTINGHAM FOREST FOOTBALL CLUB SUPPORTERS

Bring this voucher
with you for
**SPECIAL LOW
PRICES on**
TYRES & BATTERIES

**Motor
Way**
Tyre Centre

PLUMPTRE SQUARE
NOTTINGHAM
Telephone Nottingham 51731/3

BEESTON TYRE & BATTERY
SERVICE
108/110 STATION ROAD
BEESTON
Telephone Nottingham 257896

Scorechart

	Half Time	Full Time		Half Time	Full Time
A Sunderland v. Orient			M Blackpool v. Albion		
B Liverpool v. Stoke City			N Derby County v. Chelsea		
C Leeds United v. Everton			O Carlisle v. Cardiff City		
D Peterborough v. Mansfield			P Hull City v. Oxford United		
E Bristol City v. Bolton			Q Ipswich v. Leicester		
F Crystal Pal. v. Notts. Co.			R Lincoln v. Scunthorpe		
G Portsmouth v. Middlesbro'			S Fulham v. Millwall		
H Aston Villa v. Preston			T Swindon v. Sheff. Wed.		
J Arsenal v. Manchester U.			U Coventry v. Tottenham		

GOLDEN GOAL TIMES WILL BE DISPLAYED ON THE SCOREBOARD AS SOON AS POSSIBLE AFTER EACH GOAL.

Half-time scores will be shown on the scoreboard.
Full-time scores will be announced over the public address system.

Travel first class with



**KENNING
CAR HIRE**

A wide range of British Leyland models available for hire by the day, week or month.

CASTLE BOULEVARD, NOTTINGHAM.

TEL: 4 4911



Player's **N°6** The most popular filter cigarette in Britain

Guaranteed quality



PNS 485H

EVERY PACKET CARRIES A GOVERNMENT HEALTH WARNING

Published by Carrington Publications Ltd., 20 Carrington Street, Nottingham.

Printed by Temple Printing (Nottm.) Ltd., Trent Works, Wilford Crescent East, Nottingham. Telephone Nottingham 868304.