

OFFICIAL PROGRAMME 6p.



# Preston North End



Football League Division II

**LUTON TOWN**

Saturday, 30th December, 1972





## Dorman Smith are proud to be part of Preston

Now the largest industrial company with headquarters in the town and, like Preston, still expanding.

The Dorman Smith Group is renowned the world over for the following product ranges:-

**SWITCHGEAR AND SWITCHBOARDS**  
**H.R.C. CARTRIDGE FUSE LINKS,**  
**MOTOR CONTROLGEAR**  
**ELECTRICAL ACCESSORIES**  
**ROAD HAZARD WARNING EQUIPMENT**

### Dorman Smith

**DORMAN SMITH GROUP OF COMPANIES**  
ATHERTON WORKS BLACKPOOL ROAD PRESTON PR2 2DQ  
Telephone PRESTON 728271 (15 lines)

## CLUB NOTES

**SAD TO SAY** this has not been a happy Christmas for North End, save for getting four goals after three successive blanks and hanging on to a point with the three scored against Bristol City who fought back to draw 3-3.

In this Deepdale thriller the visitors were one down in 12 seconds, two down in 15 minutes. Rallying they quickly rubbed out this lead but were behind 2-3 at half time. With five minutes left they equalised.

A shock result at Carlisle on Boxing Day (1-6) inflicted our heaviest League defeat since 1-7 at Plymouth in August 1962. The worst is that well-remembered 0-7 crash at home against Blackpool on 1st May, 1948.

In hitting us for six Carlisle excelled and must be given credit for that. They would agree we did not play as badly as the result suggests, also their first two goals were lucky. The last three came near the finish.

Thus we have conceded 12 goals in the last four games, compared with eight in the preceding eight and only 15 in the first 20, a grim reminder of 2-5 at Cardiff, 1-4 at Bristol and 1-3 Sunderland (h) last Easter.

Our goal famine may have ended but our record has worsened through the defence becoming vulnerable.

1st 12 matches						next 12 matches							
P.	W.	D.	L.	F.	A.	Pts.	P.	W.	D.	L.	F.	A.	Pts.
12	5	4	3	10	7	14	12	4	3	5	14	20	11

\* \* \*

**LUTON TOWN**, today's visitors, are enjoying their best season since returning to Division Two, thanks mainly to getting 15 points on their travels. Burnley lead with 18. Q.P.R. and Bristol City also have gained 15.

Another warning that our 22nd League meeting with Luton will be a testing match lies in recent results. We lost by the only goal at Kenilworth Road in August, and last season Luton took three points at our expense.

At home they equalised a first half goal by Ricky Heppolette to finish 1-1. At Deepdale in January, ever-present Alan Slough scored the only goal. Before then results were in North End's favour.

	HOME		AWAY			HOME		AWAY			
1949-50	0-1	1-1	1959-60	2-0	3-1	1950-51	1-0	2-1	1961-62	2-0	1-4
1955-56	2-1	1-2	1962-63	3-1	2-0	1956-57	2-0	1-1	1971-72	0-1	1-1
1957-58	1-0	3-1	1972-73		0-1	1958-59	0-0	1-4			

P.21, W.11, D.4, L.6, Goals 29-21, Pts. 26.

Although credited with only four goals in 10 matches here Luton were rewarded with five points. The following comparisons of the clubs' home and away results this season show interesting similarities:

	NORTH END						LUTON TOWN							
	P.	W.	D.	L.	F.	A.	Pts.	P.	W.	D.	L.	F.	A.	Pts.
Home	11	4	4	3	12	10	12	13	3	6	4	18	17	12
Away	13	5	3	5	12	17	13	10	7	1	2	13	8	15
	<b>24</b>	<b>9</b>	<b>7</b>	<b>8</b>	<b>24</b>	<b>27</b>	<b>25</b>	<b>23</b>	<b>10</b>	<b>7</b>	<b>6</b>	<b>31</b>	<b>25</b>	<b>27</b>

Front cover picture—Bristol City goalkeeper foils an attack from P.N.E. forwards.

## PRESTON NORTH END

**FOOTBALL CLUB LIMITED**  
**DEEPALE, PRESTON**

Telephone: Preston 53818/53819

President: N. BUCK

Vice Presidents: H. CARTMELL  
W. MERCER  
Dr. A. R. WOOD

Chairman: T. C. NICHOLSON,  
J.P., F.I.O.B.

Vice Chairman: R. B. BOLTON

Directors:

T. F. CHARNLEY  
T. H. GORE  
E. GRIFFITH, B.V.Sc., M.R.C.V.S.  
A. HARRISON, B.E.M.  
A. R. W. JONES, J.P., F.R.I.C.S.  
A. C. PILKINGTON  
J. WILDE, M.B.E.

Manager:

A. BALL

Secretary:

G. HOWARTH

Assistant-Secretary:

J. W. BOLTON

Commercial Manager:

F. BADHAM

Financial Secretary:

C. H. MAYMON, F.C.A.

Hon. Medical Officer:

Dr. C. M. MACKENZIE

### HONOURS

**League: First Division**  
**Champions** 1889 — 1890  
Runners-up: 6 times.

**League: Second Division**  
**Champions**  
1904 1913 1951  
Runners-up: Twice.

**League: Third Division**  
**Champions** 1971

**F.A. Cup Winners**  
1889 1938

**F.A. Cup Finalists**  
1888 1922 1937 1954 1964

**War Cup Winners**  
1941

**F.A. Charity Shield Finalists**  
1938

**F.A. Youth Cup Finalists**  
1960

Programme Editor  
**WALTER PILKINGTON**



INCORPORATED INSURANCE BROKERS

## Garratt, Son & Flowerdew Ltd.

★

Head Office  
7 Winckley Square, Preston  
Preston 51841/6

Insurance Brokers  
to Preston North End  
Football Club

### TOPICAL JOTTINGS

MANCHESTER United will be thankful to see the back of an ill-fated 1972 and to get more agreeable results and publicity in the new year. At the top of Division One 12 months ago they have been swept to the bottom by a tidal wave not experienced by this proud club since United were relegated with 22 points 41 years ago.

They stayed down for five seasons, returning as Champions in 1936, only to go straight back with 32 points. Ironically Manchester City won the League title in that season. Even more remarkable was their descent a year later despite being the leading First Division scorers. United had the last laugh by gaining instant promotion.

It was a near thing: Aston Villa (57 points) led the Division, United had a better goal ratio than Sheffield United (both 53 points). That was in 1938, and the Old Trafford club shares with Arsenal the distinction of having stayed in Division One ever since, 27 seasons, compared with Arsenal's record 47.

\* \* \*

UNITED'S new man at the helm, trenchant Tommy Docherty, who was the predictable successor to his former Deepdale team-mate Frank O'Farrell (1956-58), thus undertakes his fourth odds-against rescue operation. He was successful in reviving Scotland, and took Chelsea back to Division One in May 1963, but fortune turned a grim face towards him at Rotherham and Aston Villa after buoyantly building up his hopes.

It is typical of the man that he ardently believes he will again succeed. "United," he says, "will not go down." A record of 17 points from 24 matches emphasises the size of his task. Even he will realise that as many may be needed from the remaining 18.

As if Blackpool's biggest away defeat followed by one at home were not enough to make a woeful Christmas, the club had their live-wire raider Alan Ainscow booked and injured, and two players, Alcock and Tully, a young newcomer having his League debut, sent off. There were four bookings in this clash with Burnley. A sad start for Harry Potts.

VAUXHALL, BEDFORD AND AUDI NSU MAIN DEALERS

## FAIRWAYS

PRESTON'S MOST PROGRESSIVE MOTOR DEALERS FOR NEW AND USED CARS

SALES, SERVICE, PARTS, ACCESSORIES AND CAR HIRE

**BLACKPOOL ROAD — RIBBLETON — PRESTON**

Telephone 57442-58286

Showrooms open weekdays 9 a.m. - 7 p.m. Saturday and Sunday 10 a.m. - 5 p.m.

4

### THE SECOND DIVISION SCENE

GOALS WERE plentiful, for a change, during the holiday period, with 30 scored in Saturday's matches and 29 on Boxing Day, for an average of 2.95 a game. This lifted the season's average to 2.63. A good New Year wish is that the upward trend will continue.

Influenza in the Sunderland camp cut the programme on each day to 10 matches. Cardiff had a home game postponed, and Huddersfield recently 'flu victims themselves, had a visit to Sunderland put off. These three clubs are among five just above the bottom team with only one point between Huddersfield (17th) and Orient (21st).

\* \* \*

BRIGHTON, beaten again, appear to be drifting helplessly back to the Third Division. Along with Middlesbrough, Blackpool and Orient, they lost twice. Blackpool's unexpected setbacks, the first by 0-4 at Nottingham, severely hit their promotion hopes.

Winning there on Boxing Day after dropping a point at home, Burnley retained a good lead, though it was narrowed by two more wins by Queen's Park Rangers. Hull City were the only other holiday 100 per-centers. Two other top teams, Oxford and Luton, collected three points, as did Fulham, Bristol City, Nottingham Forest and Portsmouth.

<b>MOST</b>	<b>wins 12</b> Burnley	<b>draws 10</b> Burnley Swindon	<b>defeats 13</b> Brighton	<b>goals for 42</b> Q.P.R.	<b>against 51</b> Brighton
<b>LEAST</b>	<b>wins 2</b> Brighton	<b>draws 4</b> Cardiff	<b>defeats 1</b> Burnley	<b>goals for 20</b> Huddersfield	<b>against 21</b> Burnley

*Why not join—*

### PRESTON NORTH END SUPPORTERS' CLUB

"THE BEST IN THE NORTH WEST"

OPEN SEVEN DAYS PER WEEK

Enjoy top class entertainment and the excellent facilities of our Luxury Club

- ★ Dancing
- ★ Resident organist, drummer & compere
- ★ Bingo (Sunday, Wednesday & Friday evenings & Sunday lunch-time - 3 big jackpots played for at each session)
- ★ First class cabaret shows
- ★ Excellent catering facilities every evening and on match days
- ★ Colour T.V. in Cocktail lounge for sporting coverage only
- ★ Big match film shows
- ★ Entertainment to suit all tastes

Membership is now open so hurry along and join—Unbeatable value at **75p** per year

### A. BOAST & CO. LIMITED

REMOVAL & SHIPPING CONTRACTORS

Heated Storage

*Regular Service to London, Midlands and the South, Part loads and single items accepted*

**First Drive-Thru Car Wash in Preston District—20p Fully Automatic**

**Empire Garage, Derby Street & Pole Street, Preston**

Telephone : Preston 54647/8

5



## MAINLY ABOUT LUTON TOWN

IT IS NEWS to many people that Luton Town were first in the League as long ago as 1897, when elected to Division Two in place of Burton Wanderers. In the initial season they gained a point a match, but subsequently did not impress.

Finishing next to the bottom in 1899-1900 with 18 of a possible 68 points they were voted out along with Loughborough Town (one win, six draws, 18 goals to 100). Blackpool and Stockport replaced them.

\* \* \*

RETURNING to the Southern League, Luton stayed there until its clubs were brought into the League on its extension from 44 to 66 clubs in 1920. They were in the newly-formed Third Division throughout its first 17 seasons.

Twelve times in this period they were in the top nine and never lower than 17th. In 1937 the frustration of finishing sixth, fourth and second—so near to their goal yet so far from it—ended with well-deserved promotion as Champions.

\* \* \*

THEY scored 103 goals to 53 (next best 85-60) and went up with 58 points, two more than Notts. County, the runners up. In view of subsequent ups-and-downs, it is interesting to recall that the other 20 Southern Section clubs, in order of merit, were:

Brighton, Watford, Reading, Bournemouth, Northampton, Millwall, Q.P.R., Southend, Gillingham, Orient, Swindon, Crystal Palace, Bristol Rovers and City, Walsall, Cardiff, Newport, Torquay, Exeter and Aldershot.

Only six remain in that company, although they could be rejoined by Cardiff or Orient and Brighton next season. These three are among eight who now have higher status.

\* \* \*

LIKE many other League clubs Luton owed their baptism as a town team to amalgamation with two local teams—Wanderers and Excelsior. That was in 1885.

Come to think of it, Luton Excelsior was a stylish title worth keeping, as unique as North End, Argyle, Orient, Hotspur, Albion, Palace and one or two other club names which have become the more endearing over the years through their originality.

"The Hatters" or "Strawplaiters," as Luton came to be known, with the first of these nicknames lasting far longer than the second, justified their elevation to Division Two in 1937 by rallying after an ominous start to reach the First Division in 1955.

Their table positions in the first seven seasons were 12th, 7th, 13th, 13th, 10th, 17th and 19th. Then they finished 8th and 3rd, before going up with Birmingham City in 1955. The top two had 54 points; so had Rotherham, but Luton had the better goal-average.

In the First Division their record for five seasons was P. 210, W. 71, D. 48, L. 91, Goals 311-347, Pts. 190. Most in a season 44, least 30, Positions 10th, 16th, 8th, 17th, 22nd.

A sad anti-climax was the fact that Luton were relegated the season after reaching the Cup Final for the first time, only to lose at Wembley against Nottingham Forest.

They first played Preston North End in 1949-50 when we had gone into Division Two.

### Cambridge Press (Clayton-le-Moors) Ltd.

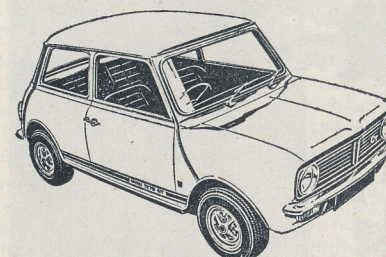
WELLFIELD WORKS,  
WHALLEY ROAD, CLAYTON-LE-MOORS,  
Near ACCRINGTON.  
Telephone : Accrington 32054

Supplies of Fund Raising Tickets to Preston North End and the majority of Football League Clubs.

# LOXHAMS

CAN

SUPPLY ALL YOUR MOTORING REQUIRMENTS



FROM

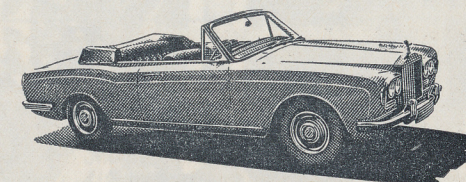
A

MINI

TO

A

ROLLS-ROYCE



DISTRIBUTORS IN LANCASHIRE AND WESTMORLAND  
FOR MORRIS - MG - WOLSELEY - TRIUMPH - ROVER  
JAGUAR - DAIMLER - BENTLEY AND ROLLS ROYCE

LOXHAMS GARAGES LTD.  
CORPORATION STREET

Phone PRESTON 54242

Also Loxhams depots at Accrington, Barrow, Blackpool, Blackburn, Chorley,  
Kendal, Lancaster, St. Annes

A member of the Dutton Forshaw Group





Alan Tarbuck scores North End's 3rd goal against Bristol City

# LUTON TOWN

WELCOME to Luton Town. Promoted in 1970 along with Third Division Champions Orient, they are striving to make their 50th League season memorable by regaining the First Division status lost in 1960 after five years in the first flight.

Owing to the ups and downs experienced by both clubs, our meetings with revived Luton last season were the first since 1963. During that period the Bedfordshire team sampled life in Division Three (two spells of two seasons each), with three seasons in Division Four (1965-1968) in between.

When they last gained promotion from the Third Division they went up as North End were going down. A determined effort to emulate the feat of Queen's Park Rangers and Charlton Athletic by rising from the Third to the First Division within two years started promisingly. They fared better than promoted Orient, but finished sixth.

Leicester City, Sheffield United, Cardiff City, Carlisle United and Hull City were the teams with better records than Luton's 49 points from 18 wins and 13 draws.

Less successful last season they finally occupied a mid-table position with 38 points. Inevitably they missed big Malcolm Macdonald, who was transferred to Newcastle United for a huge fee after scoring 30 League goals for Luton Town in 1970-71.

Some shrewd team-building and the expenditure of a considerable portion of that money on new players have put Luton firmly back in the promotion reckoning: they would have been third in the table but for dropping a point at home by failing to score against Sheffield Wednesday after achieving a 1-0 win at Middlesbrough on Saturday.

## PEN PICTURES

(Last season's League appearances and goals are shown in brackets, e.g. 30-7)

Keith BARBER (*goalkeeper*). A recruit from London senior amateur football who has proved himself an acquisition. Had trials with Luton before going to Dunstable. (18-0).

Don SHANKS (*right back*). Not signed as a full professional on finishing his apprenticeship with Fulham, this promising Londoner was taken on by Luton. (25-0).

Bobby THOMSON (*left back*). Experienced former Wolves and Birmingham player who was loaned to Walsall last season and got a free transfer. Staffordshire-born. (9-0).

Peter ANDERSON (*right half*). Luton's top scorer last season. Acquired from Hendon Town, was an amateur when he made his League debut. Native of London. (33-10).

Alan GARNER (*centre half*). Signed from Millwall, where he was usually in the Reserves. Gained first team place at Luton last March by deposing Chris Nicholl. (10-0).

John MOORE (*left half*). Eight years at Kenilworth Road make him Luton's longest-serving player. Rejected by his home-town Motherwell, he was promptly snapped up by his only English club. (36-0).

Jimmy RYAN (*outside right*). Another Scotsman, born Stirling, who was signed from Manchester United. Unlucky with injuries and illness last season. (7-0).

Rodney FERN (*inside right*). Had made 29 League appearances for Leicester last season when Luton paid £50,000 for him. Played in the 1969 Leicester v. Manchester City Cup Final. (29-0).

Barry BUTLIN (*centre forward*). Another expensive capture (similar fee) from Derby County. North End would have liked to get him. Good early impressions with Luton. Prolific scorer with Derby Reserves but denied a first team place. (0).

Vic HALOM (*inside left*). Well-known former Fulham forward signed last season. Previously played for Charlton and Orient. Hails from Burton-on-Trent. (34-2 with Fulham —7).

John ASTON (*outside left*). Said to have cost £30,000 when transferred from Manchester United, with whom he gained a lot of First Division experience. (2-0).

Alan SLOUGH (*substitute*). Experienced defender or midfield player developed by Luton, his home-town club. (42-3).



# PRESTON NORTH END RESULTS 1972-73

## DIVISION TWO FIRST ELEVEN

P24, W9, D7, L8,—Goals 24—27,—Pts. 25—Pos. 9

1972		Rslt.	Pts.	Gate
Aug. 12	—Aston Villa	a	0-1	17371
"	16—League Cup 1. Workington	a	0-1	4055
"	19—Luton Town	a	0-1	11507
"	26—Queen's Park Rangers	h	1-1	9242
"	29—Burnley	a	0-2	13166
Sept. 2	—Fulham	a	3-1	7640
"	9—Hull City	h	1-0	8136
"	16—Portsmouth	a	1-0	6965
"	19—Middlesbrough	a	0-0	9679
"	23—Carlisle United	h	1-0	10957
"	25—Orient	h	0-0	10709
"	30—Oxford United	a	2-0	3850
Oct. 7	—Sheffield Wednesday	h	1-1	15600
"	14—Swindon Town	a	2-3	8198
"	21—Millwall	h	1-0	10010
"	28—Cardiff City	a	0-3	12208
Nov. 3	—Orient	a	2-1	5661
"	11—Middlesbrough	h	0-1	10015
"	18—Nottingham Forest	a	1-0	10383
"	25—Brighton & Hove Albion	h	4-0	8005
Dec. 2	—Huddersfield Town	a	0-0	6900
"	9—Blackpool	h	0-3	18822
"	16—Sunderland	a	0-0	11529
"	23—Bristol City	h	3-3	7500
"	26—Carlisle United	a	1-6	9939
"	30—Luton Town	h		
1973				
Jan. 6	—Queen's Park Rangers	a		
"	13—F.A. Cup 3 Grimsby	a		
"	20—Fulham	h		
"	27—Hull City	a		
Feb. 3	—F.A. Cup 4			
"	10—Portsmouth	h		
"	17—Aston Villa (LCF)	a		
"	24—Sunderland (5)	a		
Mar. 3	—Sheffield Wednesday	a		
"	10—Swindon Town	h		
"	17—Millwall (6)	a		
"	24—Cardiff City	h		
"	31—Brighton & Hove A.	a		
April 7	—Huddersfield Town (SF)	h		
"	14—Blackpool	a		
"	20			
"	21—Nottingham Forest	h		
"	23—Bristol City	a		
"	24—Oxford United	h		
"	28—Burnley	h		
May 5	—F.A. Cup Final			

## FRIENDLIES

July 29	—Bolton Wanderers	a	0-1	4023
Aug. 2	—Dundee	a	1-2	6200
"	5—Coventry City	h	0-1	4929
"	7—Oldham Athletic	a	2-1	2729
Sept. 6	—Kilmarnock	h	0-0	2300

## CENTRAL LEAGUE SECOND ELEVEN

P22, W3, D5, L14,—Goals 21—46, Pts. 11—Pos. 21

1972		Rslt.	Pts.	
Aug. 12	—Aston Villa	a	1-4	0
"	14—Derby County	a	3-6	0
"	19—Blackburn Rovers	h	2-0	2
"	23—West Bromwich Albion	a	0-1	0
"	26—Everton	a	1-0	2
"	28—Burnley	h	0-4	0
Sept. 2	—Derby County	h	1-4	0
"	9—Coventry City	a	2-4	0
"	11—Leeds United	a	1-2	0
"	16—Manchester City	h	1-1	1
"	26—Bury	a	0-1	0
"	30—Sheffield United	h	0-0	1
Oct. 7	—Stoke City	a	0-3	0
"	14—Sheffield Wednesday	h	0-1	0
"	21—Bolton Wanderers	a	2-0	2
"	28—Manchester United	h	1-1	1
Nov. 4	—West Bromwich A.	h	3-4	0
"	18—Liverpool	h	1-5	0
"	25—Nottingham Forest	a	0-2	0
Dec. 9	—Blackpool	a	0-0	1
"	16—Leeds United	h	1-1	1
"	23—Wolverhampton W.	a	1-2	0
"	30—Blackburn Rovers	a		
1973				
Jan. 6	—Everton	h		
"	13—Aston Villa	h		
"	27—Coventry City	h		
Feb. 3	—Newcastle United	h		
"	10—Manchester City	a		
"	17—Bury	h		
"	24—Sheffield United	a		
Mar. 3	—Stoke City	h		
"	10—Sheffield Wednesday	a		
"	17—Bolton Wanderers	a		
"	24—Manchester United	a		
"	31—Nottingham Forest	h		
April 7	—Huddersfield Town	a		
"	11—Newcastle United	a		
"	14—Blackpool	h		
"	21—Liverpool	a		
"	23—Wolverhampton W.	h		
"	28—Burnley	h		
"	—Huddersfield (postponed)	h		

## Appearances (22 matches)

Baxter 22	McLachlan 14	Lamb 4
Morley 21	Ross 13	Taylor 4
Kershaw 20	Connor 11	McIlmoyle 3
Williams 18	Brindle 10	Spavin 3
Sheehy 16	Bruce 8	Brady 3
Brown 15	Clark 6	Billington 2
Holden 15	Richmond 6	Wilson 1
Snookes 14	Sumner 5	Spark 1
	Blyth 5	Tarback 1

## Goals (21)

Sheehy 6	McLachlan 1	McIlmoyle 1
Holden 6	Snookes 1	Kershaw 1
Bruce 3	Williams 1	opponent 1

The Preston North End F.C. hope you find this programme both informative and interesting, and we wish to acknowledge the co-operation of the *Lancashire Evening Post* for allowing us to publish photographs taken by their Staff Photographers.

# APPEARANCES AND SCORERS 1972-73

Football League Division II — P24, W9, D7, L8, Goals 24—27—Pts. 25 Position 9

F.A. Cup	Lge. Cup	G (1)	RB (2)	LB (3)	RH (4)	CH (5)	LH (6)	OR (7)	IR (8)	CF (9)	IL (10)	OL (11)	Total
—	1	Alan KELLY	21	—	—	—	—	—	—	—	—	—	21
—	—	John BROWN	3	—	—	—	—	—	—	—	—	—	3
—	1	John McMAHON	—	24	—	—	—	—	—	—	—	—	24
—	1	Jim McNAB	—	—	20	—	—	—	—	—	—	—	20
—	1	John BIRD	—	—	—	22	1	—	—	—	—	—	23
—	1	Graham HAWKINS	—	—	—	—	23	—	—	—	—	—	23
—	—	David CONNOR	—	—	3	—	—	2	—	—	—	—	5
—	—	Alan SPAVIN	—	—	—	—	—	20	—	—	1	—	21
—	—	Alec SPARK	—	—	1	2	—	2	—	17	—	—	22
—	1	Neil YOUNG	—	—	—	—	—	1	1	—	18	—	20
—	1	Alan LAMB	—	—	—	—	—	—	1	—	—	—	1
—	—	David WILSON	—	—	—	—	—	20	2	—	—	—	22
—	1	Hugh McILMOYLE	—	—	—	—	—	—	—	8	—	—	8
—	1	Alan TARBUCK	—	—	—	—	—	—	—	14	3	—	17
—	—	*Roger DAVIES	—	—	—	—	—	—	—	2	—	—	2
—	—	Gary WILLIAMS	—	—	—	—	—	—	—	—	1	—	1
—	1	Ricky HEPPOLETTE (transferred)	—	—	—	—	—	3	1	—	—	13	17
—	1	Clive CLARK	—	—	—	—	—	—	—	—	1	3	4
—	—	Alec BRUCE	—	—	—	—	—	—	2	—	—	—	8
Total			24	24	24	24	24	24	24	24	24	24	264

\* Returned to Derby County after brief period on loan.

League Division II scorers: Bruce 6 (1 as sub.), Young 5 (2 pen.), Tarback 5, Wilson 4, McNab 2, Spavin 1, McMahon 1 — Total 24

## DIVISION TWO 1972-73

Positions to December 26th inclusive

	Goals						
	P.	W.	D.	L.	F.	A. Pts.	
Burnley	23	12	10	1	38	21	34
Queen's Park Rangers	23	11	9	3	42	28	31
Aston Villa	23	10	8	5	26	22	28
Oxford United	24	11	5	8	31	23	27
Blackpool	24	10	7	7	37	29	27
Luton Town	23	10	7	6	31	25	27
Fulham	23	8	9	6	32	27	25
Sheffield Wednesday	25	9	7	9	40	37	25
Preston North End	24	9	7	8	24	27	25
Hull City	24	8	8	8	35	30	24
Bristol City	24	8	8	8	29	30	24
Nottingham Forest	24	8	8	8	29	31	24
Middlesbrough	24	8	8	8	21	28	24
Carlisle United	23	9	5	9	38	29	23
Swindon Town	24	6	10	8	32	35	22
Millwall	24	8	5	11	30	29	21
Portsmouth	24	6	7	11	24	32	19
Huddersfield Town	22	5	9	8	20	27	19
Sunderland	21	5	8	8	26	32	18
Cardiff City	22	7	4	11	27	35	18
Orient	24	5	8	11	21	31	18
Brighton	24	2	9	13	25	51	13

## CENTRAL LEAGUE 1972-73

Positions to December 23rd inclusive

	Goals						
	P.	W.	D.	L.	F.	A. Pts.	
Coventry City	23	15	5	3	47	22	35
Sheffield Wednesday	26	13	7	6	48	28	33
Derby County	24	14	5	5	53	31	33
Liverpool	22	13	5	4	53	29	31
West Bromwich Alb.	24	12	5	7	40	32	29
Stoke City	24	12	5	7	49	33	29
Everton	22	12	4	6	32	17	28
Sheffield United	22	10	5	7	30	24	25
Aston Villa	23	10	5	8	31	29	25
Manchester United	22	9	6	7	28	26	24
Wolverhampton W.	20	11	2	7	30	21	24
Blackpool	21	10	3	8	26	25	23
Manchester City	23	7	9	7	34	40	23
Nottingham Forest	22	8	6	8	34	34	22
Newcastle United	20	9	1	10	36	31	19
Bury	22	6	3	13	31	54	15
Leeds United	24	5	5	14	22	38	15
Burnley	21	5	4	12	29	37	14
Huddersfield Town	20	3	6	11	22	42	12
Bolton Wanderers	22	4	4	14	23	53	12
Preston North End	22	3	5	14	21	46	11
Blackburn Rovers	21	3	2	16	21	48	8



## Willie Cunningham (Sports) Ltd

SCOUT, GUIDE, BROWNIE AND CUB WEAR

'Best in the field' Bukta Sportswear used by all leading clubs  
Also Agents for Slazengers and Dunlop Sports Goods

*Price List on request*

Official Suppliers to Preston North End F.C.

47 CHURCH STREET, PRESTON

(opposite Grimshaw Street)

Telephone 57322

The good taste  
is here!

# Lion Ales

BY MATTHEW BROWN

*The Striker that always Scores*

*when you get*

LUMBAGO, NEURITIS, SCIATICA,  
FIBROSITIS, NEURALGIA, STIFF  
JOINTS, MUSCULAR ACHES AND  
PAINS

Make sure you see the match next week by using  
Fieryjack Ointment available from chemists every-  
where at 22p a tin.

**fieryjack**

PRESTON NORTH END F.C. DEVELOPMENT ASSOCIATION

JOIN THE GREATEST  
COMPETITION  
in the WORLD  
for ONLY 5p

---

F.A. CHALLENGE CUP

---

1st joint prize **£100** CASH plus Free  
Weekend at Wembley for Two

+

1st joint prize **£100** CASH plus Free  
Weekend at Wembley for Two

24 Prizes at £5 each PLUS 100 at £1 each

Winning Agent will receive FREE WEEKEND at Wembley for Two

---

Ticket Sellers required for match days and nights. Excellent  
commission. Apply pools office or phone Preston 56500



## NORTH END'S POSTWAR STORY (32)

### WALTER PILKINGTON LOOKS BACK OVER THE PAST 25 YEARS

1947-48

THAT GREAT 7-4 win against Derby County in a thriller which Bill Shankly would still rate as his most exciting match had everyone in the crowded pavilion stand on their feet cheering madly and waving hats in delight and relief after in the grip of intense football drama.

Everyone, I should say, except the Derby directors and fans, who could hardly believe this transformation had happened considering that their team were at least one goal ahead four times, and the occupants of the Press Box.

These public servants had a job to do and could not afford to get hot under their collars, or let a little natural partisanship override their better judgment, considering they were supposed to be neutral.

I well remember one over-enthusiastic supporter who was stamping, shouting and waving his bowler hat, grabbing mine, thrusting it into my hand, and saying "Come on, wave it! You're a Prestonian, Doesn't anything excite you?"

"Not at a football match," I replied replacing the bowler hat, "If it did we'd never get the paper out and you would have plenty to say if you couldn't read all about it."

It recalled tenser moments at Wembley nine and a half years earlier when George Mutch limping to the penalty spot in the last minute of extra time, was ready to take his fateful shot and I was on the phone to Preston with everyone at the "Post" eager to hear the outcome and in desperate haste to get it in the Stop Press, or cradle as we called it, and start the long-waiting machines running.

Mutch, hit or miss, crashed the ball through just under the bar. North End had won, to a crescendo of noise. Calm enough, as I had need to be to keep talking on an open line for two and a half hours, I said to the anxious typist "Mutch converted last minute penalty. Result: North End 1, Huddersfield Town 0. That's the lot."

I had no feeling one way or the other at the time, that is on the surface. It was bottled up and bubbled out within the next hour, and for many hours to come, when I could relax and feel as joyful as anyone else from Preston. It was the same after the 7-4 Derby epic on December 6th, 1947, and for much the same reason. That was one occasion when I did not get home in time for a late tea—one of many!

This exciting famous victory put North End in the winning mood again. The following Saturday they won at Blackpool for the first time since 1933, and Willie Robertson, who had displaced Scott at left back, put up a good show against Stan Matthews. *(to be continued)*

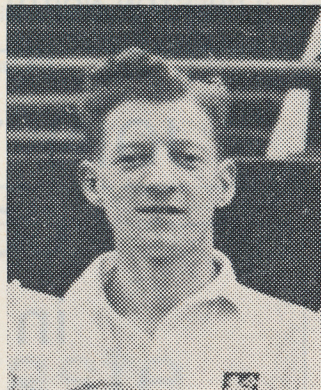
### LUTON TOWN QUIZ

- 1—WHICH former Luton idol holds an English scoring record and what is it?
- 2—HOW near was he to breaking the League's top individual aggregate in that season?
- 3—WHAT was the biggest cheque Luton Town F.C. have ever handled?
- 4—WHO was the great driving force when Luton fluttered their club flag alongside those of the mighty?
- 5—WHO never lets an opportunity pass of letting millions know that "The Hatters" are a football team and that Luton stands out on the map?
- 6—WHAT made Luton grieve over losing their only F.A. Cup Final (1959)?

#### YOUNGSTERS PLEASE NOTE — KEEP OFF THE GRASS

THE playing area MUST be kept clear of spectators. Needless damage is done, particularly during wet weather, when supporters invade the pitch.

THIS MUST CEASE, otherwise restrictions could be imposed which would penalise well-behaved youngsters as well as offenders. By all means be enthusiastic, BUT STAY ON THE TERRACES.



Willie Robertson

## TODAY'S PERSONALITIES

### MAN AT THE HELM

## HARRY HASLAM

(Luton Town manager)

THERE IS a football romance behind the rise to prominence of the man who, not yet 12 months ago, occupied the managerial chair vacated by Alec Stock, who has taken charge of his first love as a player with Queen's Park Rangers, the club he piloted from Division Three to Division One (he may get them there again), and to the League Cup Final.

Mr. Haslam's thoughts, as a former team-mate of Manchester United's renowned John Aston, were far from club management as serious business when Tonbridge in the Southern League gave him his first opportunity. Soon he was Fulham's chief scout, next manager of the Development (or entertainment) branch of Luton Town's affairs.

Scouting for potential players appealed to him more and he can claim credit for unearthing Jimmy Ryan and Malcolm Macdonald, both signed by Alec Stock. The happy sequel for Harry when last season ended was his first managerial appointment as a professional. Already he has done enough to indicate a wise choice and a return to the First Division for Luton.

### Referee — VINCENT JAMES (York)

NO STRANGER to Deepdale, Mr. James was in charge of last Season's F.A. Cup-tie with Bristol City and the Millwall match a month earlier, which North End won 4-0, as well as the Rochdale game (3-1 for P.N.E.) in November, 1970.

He is one of the League's most mature and dependable officials with 12 seasons' experience at this high level. He has refereed internationals at three grades—amateur, Under-23 and the top rating. He has controlled a Fairs Cup-tie and was in charge of the 1970 League Cup Final. He graduated through York local football and the Yorkshire League.

That took him back to 1949. A firm's representative, he is married and has two teenage sons. He enjoys bowls, studies tropical fish, and fills in the rest of his spare time doing administrative work for workmen's clubs and institutes.

### LUTON TOWN QUIZ ANSWERS

- 1—JOE PAYNE, with 10 of Luton's 12 goals without reply against Bristol Rovers (Division Three South) April 1966.
- 2—SIX more goals would have put him one ahead of "Dixie" Dean's record 60.
- 3—THE £180,000 fee Newcastle United paid for Malcolm Macdonald in May 1971.
- 4—THAT eminent former left winger and strong character "Dally" Duncan, who fashioned and guided a successful Luton in the 1950's.
- 5—T.V.'s tongue-in-cheek tormentor of long-suffering Ernie Wise, brisk repartee comedian Eric Morecambe, alias Mr. J. E. Bartholomew, a director of Luton Town.
- 6—BEING beaten after Nottingham Forest had been reduced to 10 men.

Luton Town pioneered professional football south of the Midlands by adopting it in 1890 only five years after the club's formation.

Well remembered Bob Morton (1948-64) has made the most League appearances for Luton and his long serving colleague of the same period, Gordon Turner, holds the scoring record with 243 goals.

Luton's points record top total is 66, achieved when winning the Fourth Division Championship as recently as 1967-68. Their subsequent progress proves that it pays never to be down-hearted in adversity.



***Top of the League  
for  
print print print print***

★ ★ ★

Industrial catalogues  
Bus timetables  
Colour printing  
Travel brochures

★ ★ ★

**Mather Bros (Printers) Ltd  
One Garstang Road  
Preston PR1 1JA**

*Phone 58391*

*Telex 67674*

North Enders in action



John Bird challenges in the game at Carlisle



## Your half-time check

- A — BRIGHTON & HOVE ALBION v. BLACKPOOL
- B — BURNLEY v. FULHAM
- C — HUDDERSFIELD TOWN v. ASTON VILLA
- D — MIDDLESBROUGH v. OXFORD UNITED
- E — MILLWALL v. BRISTOL CITY
- F — NOTTINGHAM FOREST v. HULL CITY
- G — ORIENT v. SUNDERLAND
- H — SHEFFIELD WEDNESDAY v. QUEEN'S PARK RANGERS
- J — SWINDON TOWN v. CARLISLE UNITED
- K — ROCHDALE v. BLACKBURN ROVERS
- L — BLACKBURN ROVERS RESERVES v. PRESTON NORTH END RESERVES
- M — LIVERPOOL v. CRYSTAL PALACE
- N — MANCHESTER UNITED v. EVERTON
- O — NORWICH CITY v. MANCHESTER CITY
- P — CHELSEA v. DERBY COUNTY
- Q — WEST BROMWICH ALBION v. LEEDS UNITED

### Lancashire League Notes

OUR JUNIORS' run of ill luck in both Divisions continued on Saturday last, when the "A" were defeated at home 0-4 by Manchester City "A" and the "B" Team, travelling to Cheadle for the game against City's "B" Team, losing 0-5.

With the Reserve Team engaging Blackburn Rovers Reserves in a Central League fixture at Ewood Park today, our Juniors complete a trio of Rovers v. P.N.E. fixtures, the "A" team travelling to Altham, the "B" Team to Langho. We hope that by completing an "A" and "B" Team double win over our close neighbours, the tide may finally turn for the youngsters, and the score sheets may begin to reflect their efforts and enthusiasm. Despite our recent run of adverse results in both Divisions, the Club feels that the experience gained by our players, both professional and amateur, is invaluable and is in fact the finest proving ground for junior footballers in the region. We sincerely hope that when the next edition of the "Notes" appears, both "A" and "B" teams have a few wins behind them, starting with a double victory today.

The attention of all Supporters, particularly Juveniles, is drawn to the importance of **KEEPING BEHIND THE PERIMETER WALL AT ALL TIMES**, to avoid any form of damage to the newly-erected advertising signs.

## TRAVEL by RIBBLE

### TO NORTH END HOME AND AWAY GAMES

Regular services to Deepdale for First Team home games from many surrounding areas

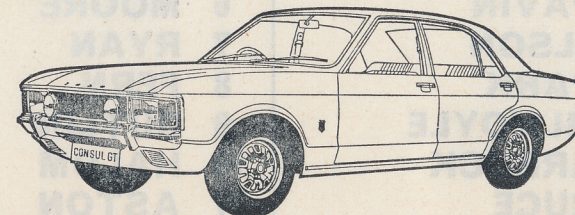
### EXCURSIONS TO PRINCIPAL AWAY MATCHES

Coaches available for Private Parties — Quotations without obligation from  
RIBBLE TRAVEL OFFICE, TRAVEL CORNER  
70/72 LANCASTER ROAD, PRESTON 'Phone 58226

# BRADSHAW'S MOTOR HOUSE LIMITED

Main  Dealers

MARSH LANE, PRESTON Ring Preston 54083



FULL RANGE OF FORD PASSENGER VEHICLES

FORD TRUCK SPECIALISTS

WIDE RANGE OF QUALITY A1 GUARANTEED  
USED VEHICLES

Largest Stockist of FORD PARTS in the area  
Modern Workshops with facilities for major repairs and spraying

FOR SALES . . SERVICE . . PARTS

You must visit **BRADSHAW'S**

Ring Preston 54083 for your demonstration drive



LEAGUE DIVISION II at DEEPPDALE — 30th DEC., 1972

## Preston North End

WHITE SHIRTS

- 1 KELLY
- 2 McMAHON
- 3 CONNOR
- 4 BIRD
- 5 HAWKINS
- 6 SPAVIN
- 7 WILSON
- 8 SPARK
- 9 McILMOYLE
- 10 TARBUCK
- 11 BRUCE

Substitute—To be announced

## Luton Town

RED SHIRTS

- 1 BARBER
- 2 SHANKS
- 3 THOMSON
- 4 ANDERSON
- 5 GARNER
- 6 MOORE
- 7 RYAN
- 8 FERN
- 9 BUTLIN
- 10 HALOM
- 11 ASTON

Substitute—To be announced

Today's match ball kindly donated by:  
H. Gornall, Corporation Arms, Lower Road, Longridge, Nr. Preston

Referee:

MR. V. JAMES  
(York)



Linesmen:

Red Flag:  
Mr. D. R. Mitchell  
Yellow Flag:  
Mr. D. White

### NEXT HOME GAMES

- Saturday, 6th January, 1973 Kick-off 3.00 p.m.  
CENTRAL LEAGUE GAME  
Preston North End Reserves v. Everton Reserves
- Saturday, 13th January, 1973 Kick-off 3.00 p.m.  
CENTRAL LEAGUE GAME  
Preston North End Reserves v. Aston Villa Reserves
- Saturday, 20th January, 1973 Kick-off 3.00 p.m.  
FIRST TEAM GAME  
PRESTON NORTH END v. FULHAM