



versus

Luton Town

Official programme

Saturday 26 February 1972

Price 6p

FA Cup Winners 1946-47 Finalists 1945-46
Football League First Division (Runners-up) 1936-37
Second Division (Runners-up) 1935-36
Third Division (South Champions) 1928-29/1934-35
Football League War Cup Winners 1943-44 Finalists 1942-43
London Challenge Cup Winners 1922-23/1950-51
London Challenge Cup Finalists 1923-24/1951-52
London Midweek League Champions 1950-51/57-58/58-59/59-60
Metropolitan League Champions 1963-64
Metropolitan League Cup Finalists 1963-64
SE Counties League Champions 1966-67

Commentary

Saturday, 26 February, 1972

Anyone for Tennis?

Will anyone who was at the Valley on February 12th, between 3 and 5 p.m., and witnessed an accident between a team, believed to be coloured red and white, and a Football League fixture please contact the police immediately as the fixture subsequently died.

There'll Always Be . . .

Owing to the fact that our long suffering Printer will be spending most of his time in darkness these notes are being written in advance of the Bristol City match and we apologise for this omission.

In view of the power cuts it is interesting to re-call our recent remarks concerning our war-time Cup Final with Chelsea at Wembley when the front of the programme contained air raid warning instructions.

In view of our reversion to war-time conditions it may well be that in the interests of National morale community singing will be re-introduced at Wembley Finals. If this is so the following could be candidates for the song sheet . . .

"There will be reductions over the dark cliffs of Dover, tomorrow just you wait and see"

or

"We will hang out our washing on the power line, If the power line's still there"

or

"Don't go down the mine Daddy There's plenty of murk on top"

or

"Underneath the lamp light in the mid-day sun".

With these titles in mind perhaps a local newspaper should sponsor a 'Song for Our Times' contest.

Meanwhile

We have pleasure in welcoming Luton Town to the Valley today. Vic Halom took the trouble to play for the ex-Charlton XI in Keith's Testimonial Match and we appreciate his action and Alec Stock's in releasing him.

It is not generally realised that Alec Stock himself is an ex-Charlton player and as we have mentioned before is another member of that considerable band of present day managers who are ex-Charlton players.

Our recent games with Luton have been close, exciting encounters and we look forward to an entertaining match.

Hospitals

Through work by the friends of local hospitals we hope to let you have details of live match coverage from the Valley for local hospitals. Presumably patients suffering from nervous troubles will be banned from listening.

Royal Life Boat Institution

As mentioned in our last programme the Royal Life Boat Institution are holding a collection on the ground today for a cause which appeals to everyone in this Island Race. The Borough of Greenwich and the County of Kent have strong connections with the sea and we hope you will support this very worthy cause.

Printer's Ink

Mention of our Printers—Andress Limited—brings to mind a letter I received from an anonymous supporter who is obviously a Liverpool exile. I happened to mention a conversation I had with Bill Shankly

CHARLTON ATHLETIC F.C.

Directors: E. M. Gliksten (Chairman), R. Law, F. W. Edmonds, M. C. Cowdrey, C.B.E., W. J. Jenner, A. T. G. Pocock
General Manager: R. W. Stone *Team Manager:* T. C. Foley *Secretary:* K. J. Calver *Assistant Secretary:* M. Hicks
Hon. Consultant Orthopaedic Surgeon: Mr. John Buck, F.R.C.S. *Dental Surgeon:* Mr. D. F. Ferris, L.D.S., R.C.S.(Eng.)
Medical Officers: Dr. James & Dr. Spencer *Hon. Liaison Officer:* C. W. Wheeler *Hon. Educational Adviser:* G. W. Taylor



Keith Peacock takes the field in his testimonial match against Chelsea at the Valley.

Photo: Reg Bailey

whilst sitting next to him at a recent match. My anonymous friend considered this on a par with Gerontius coming before God and was enraged that in the programme we spelt Mr. Shankly's name incorrectly. In fairness to the compositor I should point out that the poor chap has to try and decipher my writing which is invariably against the clock. I therefore take full blame for heresy Mr. X but the wonder is that the printer can read anything at all!

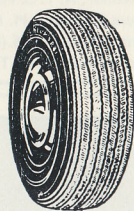
Mee and Me

While in a name dropping mood, a long train journey the other month was made interesting by the company of Mr. Bertie Mee and Alan Ball.

One particularly interesting point from the conversation was that out of nearly 100 apprentices with Arsenal over the past 10 years only about 9 or 10 in this period had become established first team players.

Our own experience is that if we obtain a regular first team player every other year from our youth policy this player has cost the Club between £30,000 and £40,000.

For a warm thought on a cold day Alan Ball mentioned that during the World Cup in Mexico he lost over half a stone in weight per match which had to be re-gained within 3 or 4 days on a two match a week basis. This was made even more difficult when the climate did not favour typically solid British foods.

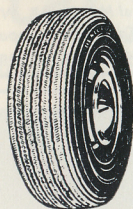


NEW TYRES

(BRITISH MADE) UP TO

50% OFF

MANUFACTURERS' RECOMMENDED
RETAIL PRICES



CROSS PLY and RADIAL PLY

FITTED FREE WHILE 'U' WAIT

Mon. to Fri. up to 10 p.m. Sat. and Sun. up to 3 p.m.

NEW CROSS PLY

Size	List Price	Our Price	Size	List Price	Our Price
520 x 10	£6.38	£3.19	670 x 13	£10.16	£5.08
550 x 12	£7.07	£3.53	520 x 14	£7.27	£3.63
520 x 13	£7.07	£3.53	560 x 14	£7.80	£3.90
560 x 13	£7.39	£3.69	590 x 14	£8.33	£4.16
590 x 13	£7.84	£3.92	560 x 15	£8.25	£4.12
600 x 13	£7.84	£3.92	640 x 15	£9.99	£4.99
640 x 13	£8.74	£4.37			

REMOULDS — FANTASTIC OFFER

£2.50 EACH — ANY SIZE

Up to 640 x 15 — Fitted Free

BATTERIES from only £4.85 each exchange

Heavy Duty — 2 years unconditional guarantee

NEW RADIAL PLY

Size	List Price	Our Price	Size	List Price	Our Price
145 x 10	£7.71	£3.85	165 x 13	£9.52	£4.76
155 x 12	£8.60	£4.30	175 x 13	£10.74	£5.37
145 x 13	£8.51	£4.25	165 x 14	£10.08	£5.04
155 x 13	£8.98	£4.49			

EXPERT WHEEL BALANCING AND ALIGNMENT — VULCANISING

VALLEY SERVICE STATION

MINISTRY OF TRANSPORT VEHICLE TESTING STATION

655 WOOLWICH ROAD, CHARLTON, S.E.7

LOOK FOR THE TEXACO SIGN Telephone: 858 6639

also at

BOROUGH SERVICE STATION

69 BOROUGH ROAD, S.E.1 (within 2 minutes of Elephant and Castle)

LOOK FOR THE TEXACO SIGN

Telephone: 407 0484



Profile

By PETER BURROWES

Although Don Givens did not quite make it as a "Busby babe" he has certainly made his impact on the game since joining Luton Town in May, 1970.

It was a shrewd move by Luton boss Alec Stock when he swooped on Old Trafford to sign Irishman Givens, and his team mate Jim Ryan.

The move almost gained Luton promotion with Givens providing skill and imagination to the Hatters attack and setting up goal chances for hot shot Malcolm MacDonald, now with Newcastle.

Although Luton failed to go up, Givens has remained a regular member of their side and last season he played 39 league games, scoring 11 goals.

Givens, who was born in County Limerick, spent most of his childhood in Dublin, and is at home either in a mid-field or striking role, both of which he has played for Luton.

Aged 23, he has a deceptive turn of speed and a fine shot, especially with his left foot.

Givens, who is married, joined Manchester United as a youngster in September 1966 but he got few chances in the first team and jumped at the chance of joining Luton even though it meant leaving a great club like United.



DON GIVENS

An Eire schoolboy international, Givens has also gained 14 full international caps for his country and has played many times alongside Charlton's Ray Treacy.

The two are great friends and respect each other as players. Don Givens likes meeting people and hates travelling to play football.

His favourite ground is Hillsborough and he considers Sheffield United captain and Scottish International Eddie Colquhoun as the most difficult opponent he has faced.

A keen golfer in his spare time Givens hopes his ambition to play in the First Division, with Luton, will soon be realized.

Pen Pictures—Luton Town

Tony Read. Born in Haydock. First played for Sheffield Wednesday and then moved to Peterborough United prior to joining Luton.

Keith Barber. A good goalkeeping prospect who has already made his first team debut. Played for Dunstable Town in Southern League.

John Ryan. Probably the best free transfer signing Luton have ever made. Joined Luton from Fulham after making 21 first team appearances for them.

Alan Slough. At 23 years of age Slough has a wealth of experience all of it gained with his home town club, Luton.

Ken Goodeve. Was signed from Manchester United twelve months ago as a centre-half and showed much promise.

Peter Woods. Another Old Trafford product, who, so far, has made the least impact of the four former United players on Luton's books. However, being young, he has time in which to make the first team grade.

Don Shanks. Served his apprenticeship with Fulham who did not offer him terms as a full-time professional, so Luton snapped him up.

Mike Keen. One of the most consistent players in the game. Former captain of Q.P.R. who signed for Luton for an £18,000 fee.

David Court. A record fee for Luton of £35,000 changed hands when this clever midfield player moved from Arsenal 12 months ago.

Chris Nicholl. Signed by Luton the day after he had put up a storming display against them for Halifax Town.

John Moore. Longest serving member of the playing staff and one of the Club's most dependable players. Joined Luton from Motherwell.

Peter Anderson. Made his debut whilst still an amateur, against Watford on 13th February and was signed as a professional the following week.

Jimmy Ryan. Joined Luton from Manchester United in May last year. A Scot from Stirling he did well for Luton last season.

Don Givens. Joined Luton from Manchester United with Jimmy Ryan last season. With eleven goals was a leading goal scorer for Luton last season.

Viv Busby. With the departure of Malcolm MacDonald to Newcastle extra responsibility has developed on this 21-year-old player.

Robin Wainwright. Joined the Club straight from school but has yet to make his first team debut.

LUTON TOWN F.C. ►

BACK ROW: Peter Woods, Viv Busby, Alan Garner, David Court, Don Shanks.

MIDDLE ROW: Ken Whitfield (coach), Don Givens, Chris Nicholl, Tony Read, Robin Wainwright, Peter Anderson, Jimmy Andrews (assistant manager).

FRONT ROW: Ken Goodeve, Roger Hoy, John Moore, John Ryan, Alan Slough, Jimmy Ryan.

Picture—"The Luton News".

Referee

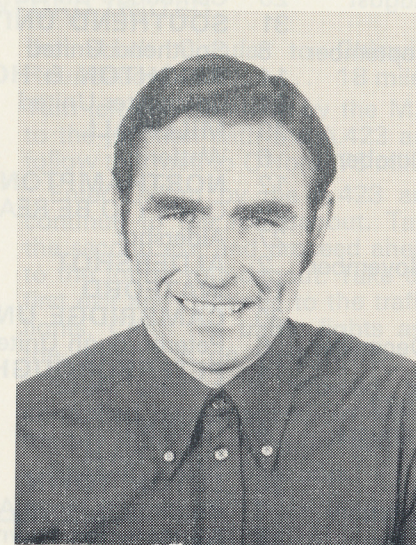
EDWARD JOLLY

from Middleton, Manchester.

Began refereeing in 1949 with The Middleton Youth League, then through the Blackley Amateur League, Manchester League, and Lancashire League to The Football League.

Officiated in the Anglo-Italian Competition in May 1970 as Linesman for Fiorentina v Sunderland. Also Ireland v Scotland Youth International March 1971.

Married, with two children, he is an Insurance Agent. Referee Instructor for Manchester County F.A.



MIDWEEK FOOTBALL LEAGUE 1971/72 SEASON

1971			
August	25	Cambridge United	(A) 0—2
	31	SOUTHEND UNITED	(H) 2—2
September	8	Southend United	(A) 1—2
	14	BRIGHTON & HOVE ALBION	(H) 7—1
	22	Colchester United	(A) 2—0
	29	MILLWALL	(H) 2—2
October	6	Watford	(A) 0—4
	12	NORTHAMPTON TOWN	(H) 5—1
	20	Orient (TO BE REARRANGED)	(A)
	27	Aldershot	(A) 1—0
	27	ALDERSHOT	(H) 1—2
November	16	WATFORD	(H) 2—2
	30	CAMBRIDGE UNITED	(H) 4—2
	6	Peterborough United	(A) 2—2
December	14	PETERBOROUGH UNITED	(H) 2—1
1972			
January	4	ORIENT	(H) 1—2
	18	Luton Town	(A) 0—2
	25	LUTON TOWN	(H) 1—2
February	2	Brighton & Hove Albion	(A) 2—1
	15	Northampton Town	(A) 0—1
	29	COLCHESTER UNITED	(H)
March	9	Aldershot (LC)	(A)
	15	Millwall	(A)
	22	Brighton & Hove Albion (LC)	(A)
April	4	ALDERSHOT (LC)	(H)
	18	BRIGHTON & HOVE ALBION (LC)	(H)

Kick-Off times for home matches will be 7.15 p.m.

Semi-Final and Final fixtures of League Cup (LC) subject to qualifying.

Half-time Scores

A Burnley v Sheffield Wednesday
B Carlisle United v Blackpool
C Fulham v Bristol City **D** Swindon Town v Oxford United **E** Watford v Millwall **F** Birmingham City v Portsmouth **G** Cardiff City v Leeds United **H** Derby County v Arsenal **J** Everton v Tottenham Hotspur **K** Huddersfield Town v West Ham United **L** Manchester United v Middlesbrough **M** Orient v Chelsea **N** Stoke City v Hull City **P** Liverpool v Manchester City **Q** Southampton v Newcastle United **R** Wolverhampton Wanderers v Ipswich Town **S** Aston Villa v Port Vale **T** Brighton & Hove Albion v Plymouth Argyle.

Next Home Matches

Football League Division II v. Swindon Town. Saturday 18th March, K.O. 3 p.m.

Midweek Football League v Colchester United Reserves. Tuesday 29th February, K.O. 2.45 p.m.

Other Matches

15.2.72 v Northampton Town Reserves (A) Midweek Football League. Lost 0-1.

Clarke, Jones, Tumbridge, Barnard, Shipperley, O'Kane, Ellis, Plumb, Went, Bruck, Flannagan. Sub.: Hunt, B.

TRAVEL

BY CAR TO OXFORD UNITED

Approximately 75 miles from Charlton. Compiled by the Royal Automobile Club.

Leave by Woolwich Road and continue via Trafalgar Road, Greenwich Road, New Cross Road, Queens Road and Peckham High Street to Camberwell Green. Turn left and follow the one-way system via Grove Lane and Daneville Road to Coldharbour Lane, Acre Lane and Clapham Common (North Side) 10 miles.

Turn left and continue by Battersea Rise and High Street to the South Circular (A.205) and follow

the South Circular to Chiswick Roundabout 18 miles.

Turn left and continue by the M.4. to the junction with the A.423 and follow this road to Oxford 75 miles.

Enter Oxford by the A.423 and continue to the roundabout. Take the second exit and proceed ahead to the fourth roundabout. Take the first exit and continue to the traffic lights. Cross the traffic lights and the ground is on your right.

Street parking is allowed but controlled by the police, so watch for any signs including diversions.

Price of tickets: 65p, 55p.

BY CAR TO SHEFFIELD WEDNESDAY

Approximately 152 miles from West London. Compiled by the Royal Automobile Club.

Leave London from Marble Arch via Edgware Road and proceed north to the junction with the North Circular at Staples Corner. Turn right and continue to Brent Cross Flyover, filter left onto the A.41 and follow the signs to the start of the M.1 8 miles.

Follow the M.1 northward to Intersection No.31 141 miles.

Proceed by the signposted route 'Sheffield' and continue by the A.57 for six miles to the Sheffield Ring Road (A.6102). Turn right onto the A.6102 and continue ahead to the junction with the A.61. Turn left and the ground is on your right (see Town Plan)..... 152 miles.

There are car parks opposite the ground but the police control street parking, so watch for any signs including diversions.

Your nearest RAC offices are at: RAC, P.O. Box 100, RAC House,

Lansdowne Road, Croydon, CR9 2JA; or, RAC Northern Home Counties, 130 St. Albans Road, Watford, Herts.

Price of tickets: 70p., 55p., 45p. Available 3 weeks in advance.



FOOTBALL LEAGUE FIXTURES 1971/72

1971		1971/72	1970/71
Aug.	14—Hull City	H 1—0 9,332	0—1 9,656
"	17—Peterborough United (LC)	H 5—1 7,080	— —
"	21—Swindon Town	A 1—2 15,492	1—1 11,953
"	28—Watford	H 2—0 11,966	1—2 10,447
"	30—Millwall	A 1—2 18,588	0—2 12,990
Sept.	4—Birmingham City	A 1—4 25,231	1—1 20,767
"	7—Leicester City (LC2)	H 3—1 11,727	— —
"	11—Middlesbrough	H 0—2 11,167	1—0 9,424
"	18—Preston North End	A 1—2 13,198	— —
"	25—Burnley	H 2—0 8,920	— —
"	28—Carlisle United	A 2—5 9,723	1—1 12,266
Oct.	2—Orient	A 2—3 9,600	0—0 14,746
"	5—Bristol Rovers (LC3)	A 1—2 14,735	— —
"	9—Sheffield Wednesday	H 2—2 8,937	2—3 10,670
"	16—Hull City	A 3—2 9,933	0—2 17,528
"	19—Sunderland	H 2—2 8,054	1—1 10,520
"	23—Cardiff City	A 1—6 13,092	1—1 18,034
"	27—League Cup 4	— —	— —
"	30—Bristol City	H 2—0 10,101	1—1 10,460
Nov.	6—Luton Town	A 2—1 11,011	1—1 15,262
"	13—Oxford United	H 3—0 9,088	2—0 8,867
"	17—League Cup 5	— —	— —
"	20—Fulham	A 0—1 13,359	— —
"	27—Queens Park Rangers	H 2—1 16,258	0—3 16,138
Dec.	4—Portsmouth	A 0—0 10,007	0—2 10,294
"	8—League Cup Semi-Final	— —	— —
"	11—Blackpool	H 2—3 9,617	— —
"	15—League Cup Semi-Final	— —	— —
"	18—Birmingham City	H 1—1 8,313	1—1 10,742
"	27—Norwich City	A 0—3 31,041	0—2 9,687
1972			
Jan.	1—Preston North End	H 2—1 8,052	— —
"	8—Watford	A 3—0 9,218	1—1 12,867
"	15—Tranmere Rovers (F.A. Cup 3)	H 0—0 12,062	— —
"	17—Tranmere Rov. (F.A. Cup 3 Replay)	A 2—4 12,512	— —
"	22—Carlisle United	H 1—1 8,195	1—1 9,007
"	29—Sunderland	A 0—3 12,877	0—3 11,860
Feb.	5—F.A. Cup 4	— —	— —
"	12—Cardiff City	H 2—2 7,526	2—1 10,788
"	19—Bristol City	A 0—2 —	2—2 10,187
"	26—Luton Town	H — —	1—1 12,952
Mar.	4—Oxford United (L.C.F.)	A — —	1—2 12,409
"	11—Sheffield Wednesday	A — —	0—1 16,752
"	18—Swindon Town	H — —	2—1 10,052
"	25—Middlesbrough	A — —	0—3 14,247
"	31—Orient	H — —	2—0 8,105
April	1—Norwich City	H — —	2—1 13,066
"	4—Burnley	A — —	— —
"	8—Fulham	H — —	— —
"	15—Queens Park Rangers (S.F.)	A — —	4—1 14,027
"	22—Portsmouth	H — —	2—2 8,447
"	25—Millwall	H — —	1—3 15,854
"	29—Blackpool	A — —	— —
May	6—F.A. Cup Final	— —	— —

Copyright of The Football League Ltd. and not to be reproduced without permission.

COME SHOPPING AT THE VALLEY

TWO SHOPS OPEN EVERY MATCH DAY

CENTRE-SPOT SHOP OPEN EVERY WEEKDAY 9.30 a.m.-4.30 p.m.

Golden Jubilee Items

Unique book	50 ..	Years ..	History ..	Hand-25p
Ties	62½p
Rosettes	15p
Pens	3p
Lapel Badges	25p
Silk Scarves	62½p

Every item distinctively designed to mark the Club's Golden Jubilee.

All back numbers of Club Programmes this season.

Sports & Novelty Items

Valiant T shirts from	..	45p
Charlton Shirt Badges	..	15p
Mini Football Boots for cars	17½p	
Football and Boot Key Rings	..	12½p
Red & White Teddy Bears	£1.75	
Gola Training Shoes & Football Boots		
Complete Charlton Strip for Boys		
All other Clubs' strips available within 72 hours.		
Penants of most League Clubs from 25p.		
Valiant Car Cushions.		

THE VALLEY SHOP in Ground—behind main stand.

CENTRE SPOT SHOP in Floyd Road—near Station.



In action

Side left: Cyril Davies

Photo: Universal Pictorial Press

Bottom left: Eamonn Rogers shakes off a challenge.

Photo: Brian Cassey

Top right: Ray Treacy and Bobby Hunt in action against Cardiff.

Photo: Sport & General

Bottom right: Dick Plumb with arm aloft after scoring against Carlisle United.

Photo: Reg Bailey



F. CHAMBERS
(BUILDERS' MERCHANTS)
LTD.

11 VINCENT ROAD
WOOLWICH, S.E.18

Telephone: 01-854 0550

ALL BUILDING AND
DECORATING MATERIALS
SUPPLIED

L. D. WAUGH
14 RIDLEY ROAD
WELLING
KENT
854 6483

DOMESTIC AND INDUSTRIAL
ELECTRICAL CONTRACTORS

SUPPLIERS OF ALL
ELECTRICAL APPLIANCES

ELECTRICAL CONTRACTOR TO C.A.F.C.

AFTER THE MATCH
come
GREYHOUND RACING
at
CATFORD STADIUM

RACING EVERY THURSDAY AND
SATURDAY 7.45 p.m.

FULL TOTALISATOR FACILITIES
RESTAURANT AND FULLY LICENCED BARS

ADDRESS
PRINTING COMPANY
LIMITED

▲
*Periodical and
Commercial
Printers*

▼
91-93
WADDON NEW ROAD
CROYDON, SURREY
CR0 4JB

Telephone: 01-688 3182-3

LEWIS (GREENWICH) LTD.

109 PELTON ROAD
GREENWICH, S.E.10

Telephone: 01-858 0031

Coaches to all Away Games

NEXT AWAY MATCHES:
Sat., Mar. 4—Oxford United, 75p.
Sat., Mar. 11—Sheffield Wed., £1.90

BOOK AT ABOVE ADDRESS,
10 GENERAL GORDON PLACE,
WOOLWICH, S.E.18
or at your Local Agent.

MARTIN'S D.I.Y.
BUILDERS' MERCHANTS

54 CHARLTON CHURCH LANE
CHARLTON, S.E.7

TELEPHONE: 01-858 3071

WALLPAPER • PAINT
SAND & CEMENT
GLASS
COPPER FITTINGS
FREE DELIVERY

*Join
the
Harvey
Future*

The combined strength of Harvey's and Butterfields now offers good opportunities for interesting and varied employment.

Write, phone or call our Employment Department, G. A. Harvey & Co. (London) Ltd., Woolwich Road, Charlton, London, S.E.7. Telephone: 858 3232.

HARVEY

Address Printing Co. Ltd., Waddon New Road, Croydon

Charlton Athletic

Red and White

Luton Town

White

John DUNN	1	Tony READ
Mick JONES	2	John RYAN
Phil WARMAN	3	Alan SLOUGH
Dennis BOND	4	Mike KEEN
Paul WENT	5	Chris NICHOL
David SHIPPERLEY	6	John MOORE
Cyril DAVIES	7	Robin WAINWRIGHT
Ray TREACY	8	David COURT
Robert HUNT	9	Vic HALOM
Eamonn ROGERS	10	Don GIVENS
Keith PEACOCK	11	Viv BUSBY
	12	

Referee: E. Jolly—Lancashire
Linesmen: P. K. Byford—Essex (Cerise flag)
A. Robinson—Hampshire (Orange flag)

Keep in touch with

FOOTBALL LEAGUE AND LOCAL SOCCER NEWS

through the

SOUTH EAST LONDON & KENTISH
Mercury

THERE'S MORE SPORT IN THE MERCURY!

Charlton Athletic Football Company Limited. Founded 1905
The Valley, Floyd Road, London, S.E.7 Telephone 01-858 3711