



MILLWALL FOOTBALL CLUB

LUTON TOWN

Football League Division II

Saturday 10th April 1971 K.O. 3 p.m.



OFFICIAL CLUB PROGRAMME 5p

MILLWALL FOOTBALL & ATHLETIC CLUB LIMITED



VICE PRESIDENT: R. J. MELLISH M.P.

Directors: F. C. Purser (Chairman), N. Weedon (Vice Chairman),
W. J. Nelan, J. B. Rickard, H. T. J. Burnige F.R.I.C.S., L. C. Eppel

General Manager: B. R. V. Fenton Secretary: D. G. Borland

Trainer/Coach A. Nelson Trainer/Physiotherapist: J. Blackman

Hon. Medical Officer: Dr. R. F. Boomla.

Registered Office: The Den, New Cross, London, S.E.14 Telephone: 01-639 3143/4

Talking Point

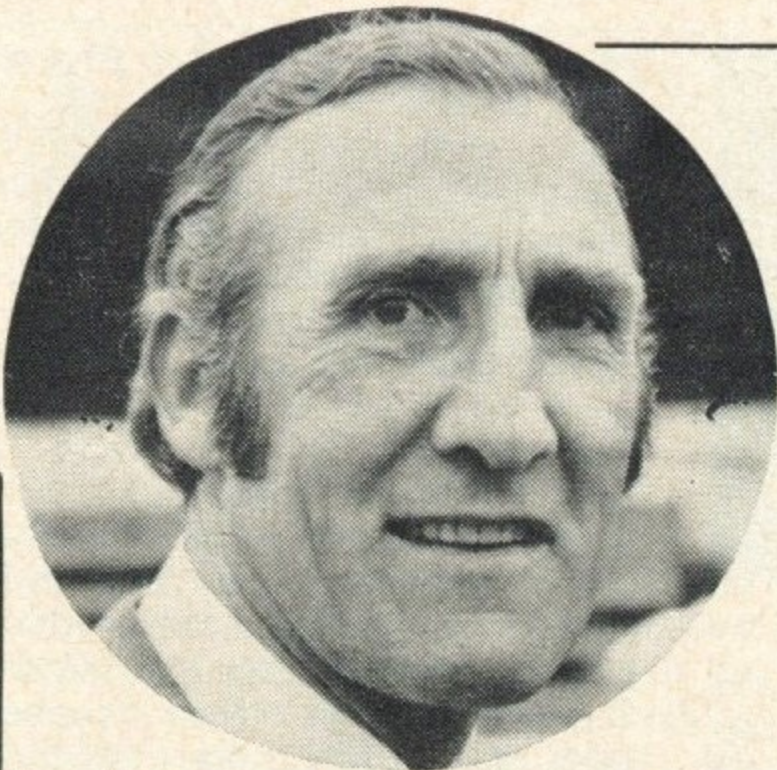
This season's challenge for the top in Division Two has probably been the closest for many a year. In 1962/63 when Stoke City were Champions only six points separated them from Bury who finished eighth. The 1970/71 campaign looks as if it will finish tighter even than that. Of course, there are still seven or eight games still to be played and the margin of points might well widen, but as it stands at present one could almost permutate two from eight and still not be certain of making a correct forecast so close are the Clubs in this 'traffic jam' of a promotion race. The Easter programme, always vital in settling these kind of issues, got under way yesterday, but it is interesting to note that two strong contenders clash this afternoon. Leicester City and Sheffield United meet in a match which could well decide who goes up and who stays down. Hull City and Cardiff City, two other Clubs with promotion aspirations are away from home today, Hull at Hillsborough and the City involved in a semi-local derby with Swindon Town, never an easy side to beat especially on their own ground. Luton Town, of course, are here at The Den, and after we had slightly dented their hopes by taking a point from them recently at Kenilworth Road, they must be a little apprehensive of their chances. In two days time, Luton meet Leicester at home, a clash which could well settle a lot of problems. On the same day Hull seem to have an easy one at home to strugglers Bristol City. Tuesday too has its quota of top v. bottom Clubs and these don't always turn out as one would expect. When we pick up our papers next Wednesday morning we may find that all the questions have been answered. On the other hand we may still have to wait a week or two before we see the eventual outcome of what has undoubtedly been one of the closest contests for promotion from Second to First for a long time.

HALF-TIME SCOREBOARD

A	Burnley v. Blackpool
B	Chelsea v. C. Palace
C	Everton v. Wolves
D	Huddersfield v. Man. C.
E	Man. Utd. v. Derby
F	Newcastle v. Leeds
G	Notts F. v. West Ham
H	Southampton v. Arsenal
J	Stoke v. Liverpool
K	Tottenham v. Ipswich
L	W.B.A. v. Coventry
M	Birmingham v. Blackburn
N	Bolton v. Carlisle
O	Bristol C. v. Portsmouth
P	Leicester v. Sheff. Utd.
Q	Middlesbrough v. Sunderland
R	Norwich v. Q.P.R.
S	Orient v. Oxford
T	Sheff. Wed. v. Hull
U	Swindon v. Cardiff
V	Watford v. Charlton
W	Gillingham v. Fulham
X	Brentford v. Scunthorpe
Y	Colchester v. Lincoln

Match Ball

The Match Ball for this afternoons game has been donated by Mr. Harry Hill of Millwall Supporters Club. Thanks Harry for the generous gesture which is much appreciated.



Manager's Comments

Last Saturday at Fratton Park versus Portsmouth we were in control from the 'off' and although the goals came late in the game through Barry Bridges and Gordon Bolland, any other result would have been an injustice. Dave Coxhill made his debut and acquitted himself with real merit, taking into consideration that he has not yet reached his nineteenth birthday. I am confident he will make his mark on the game. The win nevertheless was a class team performance with the work rate an outstanding feature of our game. It is only natural at this time of the season to meditate as to what would have been possible

if we had a better start to the season. However, it's to the future we must look and providing we can prepare by having around sixteen to seventeen players of first team strength who can cover in all positions then I see no reason why we should not make a real impression and a challenge for honours next season. Today we have a tough task and the game should be one to remember, because with Luton Town pressing for promotion, we have a real fight on our hands, in a football sense, of course. We shared the points at Luton, and that result was a fair reflection on the game I thought with Bryan Brown scoring his first goal for the Club late in the game. I hope that today's game will be worthy of the occasion.

BENNY FENTON



PLAYERS' PORTRAIT



BILLY HOLMES

BILLY HOLMES was an Amateur with Woking this time last year. He was tried out in a private practice match towards the end of last close season and was immediately signed as Pro. He took a little while to settle down, but professional coaching and training has developed him into a useful 'striker', speedy and with a nose for goal. He has scored 8 goals in the Reserves and was Sub for the League side at Birmingham. Billy, who is 19, was born in Balham and should be one to note for the future.

Billy Holmes



CLUB VIEW

The 1970/71 season is drawing rapidly to a close. We look back with mixed feelings. Disappointment at our mediocre start, pleasure when we think of that mid season spell of success which gave us a tantalizing vision of an outside chance of promotion, and overall, one supposes, a sense of relief at retaining our respectability. When one considers that this is only our fourth full season back in Division Two after a twenty year sojourn in the 'Wilderness' of Fourth and Third Division Football, it is difficult to understand the poor support we get. We know full well, of course, that the hall mark of success today is getting to that First Division, but miracles don't happen over night. The Second Division is littered with Clubs, some of them with very famous names, former members of the First and now struggling to keep afloat in the second. Some indeed have recently sunk to the Third and striving desperately to get back to the Second where battling in the basement we have former First Division notables like Blackburn and Bolton striving to survive. Of course, we at The Den are really only concerned with one Club, MILLWALL. Don't, however, disparage us and our achievements. *We have done well.* We have only one unenviable distinction, that of being the only London Club yet to taste First Division Football, but in modern day football four seasons in Division Two is just a drop in the ocean. *Give your Club a chance. One way to do that is to support it. In our next programme, the last of the season, we shall be printing application forms for Season Tickets. Why not buy one? You can either pay outright or as in the past by placing a deposit and paying off during the close season.*

Official Programme Season 1971/72

In response to our request for ideas as to how to improve next season's Official Programme we have already received several good ideas which we are working on. As you have probably noticed in recent years our programme is not crowded with adverts. We like to have adverts because as you will appreciate this helps to defray the cost, but space not occupied by adverts does give us an opportunity to give you more matter to read and more photos, which, after all, is what is most wanted. We have an idea, however, which we hope will catch on. It is a form of advertising really without the usual blurb which goes with it. What we would like is for firms or individuals to donate a page. This means in effect that the cost of one page's print will be donated, and of course, the name, etc., of the donor will be printed at the foot of the page. For instance you might like to see your name as the donor of *Talking Point*, or *Colts news*, etc. Later on we will be able to give you some idea as to the cost involved, but in the meantime perhaps you would like to chew this idea over in your minds and if you would like to become involved let us know.

Points from the Past

Today's meeting with Luton is the 32nd in the Football League, our association in the League commenced when the Third Division was formed in 1920, and we kept company until 1928 when Millwall won the Third (South) with a record goal total of 127. Although Luton Town finished below the half way line that season they were the third highest goalscoring side in the Third Division that season with 94 goals. Northampton were second highest with 102 goals and were runners up. Both games in the 1920/21 season finished as goal less draws. Millwall and Luton met one another after the 1920/21 season for the eight consecutive seasons, and those goalless games already mentioned were more than compensated for in later meetings. In 1925/26 Millwall put 7 goals past the Hatters without reply at The Den and repeated the performance the following season, but Luton took some of the sting out of these results by slamming the Lions at Luton in 1926/27 season by six goals to nil. Acquaintance under League auspices was restored in the 1934/35 season and Luton said 'Hello again' by beating the Lions at The Den 4-1 and at Kenilworth Road by 2-1. Luton won the Third Division (South) Championship in 1936/37 and left Millwall behind. But this was only for one season for Millwall emulated the Hatters feat the very next season and joined them in Division Two. Came the War and we had to wait until 1946/47 before meeting again. At the end of 1947/48 our paths again separated to be joined again in 1963/64 in Division Three. Finishing fourth from bottom that season Millwall were back in Division Four. Wherever else our two Clubs were destined to meet it was not in Division Four, as Millwall returned to Division Three, Luton left for Division Four and we didn't meet again until ten days ago at Kenilworth Road where honours were shared at 1-1.

SUMMARY

P.	W.	D.	L.	F.	A.	PTS.
31	9	13	9	44	42	31



The Lions Shop

Now on sale from the two Lions Shops in the ground are special Millwall F.C. jig-saw puzzles. These puzzles feature a large coloured photograph of the team and make an ideal souvenir or present. Selling at 32½p each these puzzles are proving to be very popular so make sure of yours while stocks last. With the season drawing to a close a usual item available from the shops are the official Millwall F.C. Programme Binders that will take a complete season's set of our programmes and will keep them in first class condition. Made in white PVC with blue lettering these binders cost 87½p each.

Both shops carry our usual large range of football items and souvenirs and amongst the latest editions to our stock have been:-

Ties	75p
T-Shirts (adults and boys)	52½p and 40p
Scrap Books	17½p
Players Photo Sheets (in colour)	10p
Texaco Books	25p

and a full list and prices is obtainable from the Club.

We also carry a large selection of programmes, lapel badges and pennants of other Football League Clubs and the shop staff will be pleased to let you have full details and prices.

All items may be ordered by post through the Club, postage extra.

'Evening Standard'

Five-a-side

Championships

Once again *The Evening Standard London Five-a-Side Championship* will be held at *The Empire Pool, Wembley* on Wednesday 5th May 1971 at 7 p.m. MILLWALL as usual will be competing. Tickets for this annual event are in great demand and we have received a limited number for sale at £1.00 each. These are available from our Ticket Office, first come first served. BUY NOW.



FROM THE CROWD

The above photograph was taken at one of our matches here at The Den this season. If you are the person featured within the circle then a complimentary ground ticket for our next home league match can be yours, by applying to the General Office in person with a copy of the programme.

R.T.S. STEEL

409 SILWOOD STREET,
BERMONDSEY, S.E.1

Builders Engineers

Metal Fabrications

General Iron Work

Gas and Arc Welding

phone: 237 4914 639 3402

Colts News

Our Seniors gained a point last Saturday against West Ham in a goal less draw. The lack of goals in this match can be attributed to both teams failing to master the bumpy pitch and a very high wind. The first half was evenly balanced but neither side looked like scoring. Our mid-field performers never took control and even gave the advantage to the opposition at times with bad distribution. Alan Ballard in goal had little to do and was only troubled by the high wind. Derek Rainbird at right full back was our only player to master the conditions, playing really well controlling and distributing with accuracy. In the second half we changed our tactics but met with little success for once again the conditions prevailed and prevented us from doing well. Our other full back, John Flaherty used his positional sense quite well and saved his legs on many an occasion. Ken Enver made a welcome return to the Seniors, but on the bumpy ground he was unable to produce his usual game. The West Ham Keeper had as little to do as Alan Ballard, and cohesion and understanding was at such a premium that when the final whistle sounded both teams were thankful that at least they had not lost.

Our Youth side had a very good win over Chelsea on the same day by two goals to nil. Chelsea won the toss and chose to have the wind in their favour in the first half. We were rather fortunate to have a clean sheet at half time as the Chelsea lads called the tune and gave our young defence a gruelling time. Lady Luck was on our side in this half. After the interval we made a few positional changes and from a corner kick Clark was pushed up to use his height well and he nodded home our first goal. The whole complexion of the game changed now and sensing victory we forced another corner on the opposite side and Malcolm Hobbs hit a hard drive in from close range. We did score another goal which would have been the best of the match, but the referee ruled that there was an infringement prior to the ball going in and it was disallowed. Stephen Barclay played well at right back, but Louis Munoz disappointed with probably his weakest game of the season. Tony Palombo was injured and had to be replaced in the second half.

TAKE COURAGE



The Man in the middle

Vincent James

York

Rapidly becoming one of the League's most experienced 'Men in the Middle', Mr. James joined the League's list of match officials as a Linesman in 1955 having progressed through Yorkshire League. He started Refereeing in 1949. He has had his share of honours officiating in Amateur, Under-23 and full International matches. Has officiated in an Inter Cities Fairs Cup Match and in 1970 was honoured with position of Referee in the Football League Cup Final. Mr. James is a representative, married with two sons. His interests are Bowls and tropical fish. He is also Secretary of the York City Branch of the Working Men's Club & Institute Union Ltd.

BY ROAD TO BLACKBURN

Approx. 226 miles from West London

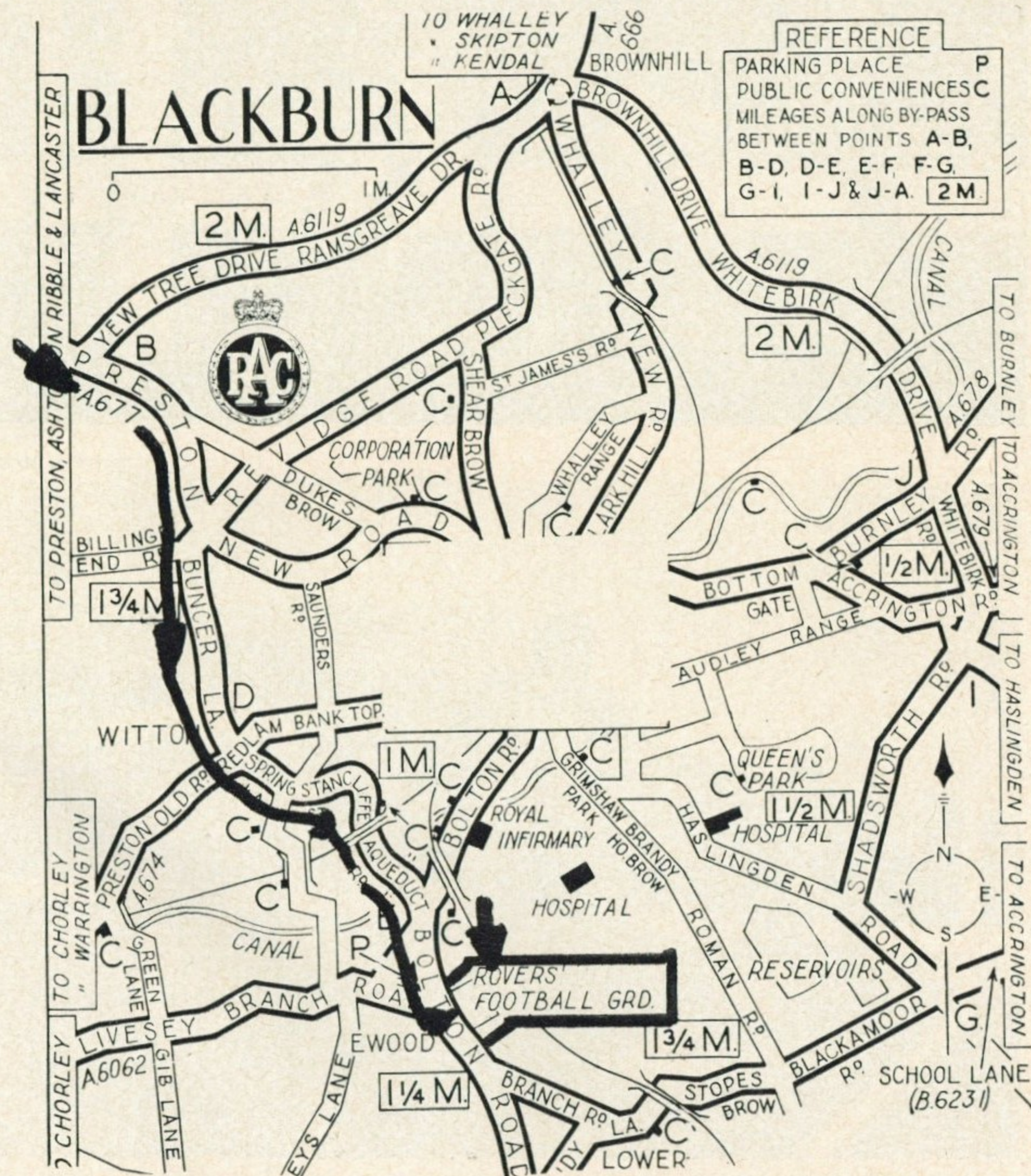
Leave from Marble Arch via Edgware Road and proceed north to the junction with the North Circular at Staples Corner. Turn right and continue to Brent Cross Flyover, filter left onto the A41 and follow the signs to the start of the M.1 8 miles Proceed northward by the M.1 to the intersection with the M.45 77 miles Follow the M.45 to the A45 then the signposted route to the M.6 at Gailey Intersection 132 miles

Continue by the M.6 northward to Intersection No. 31	219 miles
Proceed by the signposted route "Blackburn" and continue via A59 then the A677 to Blackburn	226 miles

Enter Blackburn by the Preston New Road (A677) and continue to the crossroads. Turn right into Bouncer Lane and proceed ahead via Spring Lane, Stancliffe Street, and Aqueduct Road to Bolton Road. The ground is on your left in Bolton Road (see Town Plan).

There is parking space near the ground but police control street parking, so watch for the signs including diversions.

Nearest RAC offices: RAC, P.O. Box. 100, RAC House, Lansdowne Road, Croydon CR9 2JA; or RAC Northern Home Counties, 130 St. Albans Road, Watford, Herts.



Action

Shots taken from our match with Charlton



David J. Willis



Millwall Football Club League Fixtures 1970/71

		Venue	Result 70/71 F. A.	Result 69/70 F. A.	Atten- dance 70/71	Atten- dance 69/70
1970						
Aug. 15	Oxford United	H	1 2	0 0	9,895	10,980
22	Cardiff City	A	2 2	0 0	25,299	8,423
29	Portsmouth	H	0 0	3 1	8,908	10,564
Sep. 2	Norwich City	A	0 1	1 2	15,360	12,276
5	Charlton Athletic	A	3 1	2 2	15,867	21,718
9	Stoke City (L.C. 2nd Rd.)	A	0 0	—	10,230	—
14	Sheffield United	H	1 2	1 0	13,365	8,782
19	Hull City	A	0 2	1 2	15,593	11,286
21	Stoke City (L.C. 2nd Rd. Replay)	H	2 1	—	12,789	—
26	Sunderland	H	0 0	—	12,196	—
29	Swindon Town	A	0 3	1 2	14,389	17,491
Oct. 2	Carlisle United	A	0 3	0 4	8,424	6,214
7	Derby County (L.C. 3rd Rd.)	A	2 4	—	25,537	—
10	Blackburn Rovers	H	2 0	3 1	8,280	11,434
17	Oxford United	A	3 2	0 0	13,715	10,764
19	Watford	H	3 0	1 0	11,988	12,777
24	Orient	A	0 0	—	14,282	—
28	League Cup 4th Round					
31	Queens Park Rangers	H	3 0	2 0	16,012	13,982
Nov. 7	Sheffield Wednesday	A	0 1	—	12,668	—
14	Bolton Wanderers	H	2 0	2 0	6,410	9,881
18	League Cup 5th Round					
21	Bristol City	H	2 0	1 1	9,173	11,406
28	Middlesbrough	A	0 1	1 3	13,036	16,221
Dec. 5	Birmingham City	H	2 1	6 2	8,560	7,825
9	League Cup Semi-Final					
12	Leicester City	A	1 2	1 1	22,062	24,240
16	League Cup Semi-Final					
19	Cardiff City	H	2 1	1 2	8,591	9,421
1971						
Jan. 2	Stoke City (F.A. Cup 3rd Rd.)	A	1 2	—	21,400	—
9	Swindon Town	H	2 2	3 1	10,120	13,497
16	Watford	A	4 0	1 1	14,072	20,612
23	Norwich City	H	2 2	1 0	9,842	9,617
30	Middlesbrough	H	1 0	1 1	10,180	12,641
Feb. 6	Birmingham City	A	1 3	0 2	21,893	22,564
20	Bristol City	A	2 3	1 1	10,259	13,133
27	Queens Park Rangers League Cup Final	A	0 2	2 3	15,698	19,735
Mar. 1	Leicester City	H	0 0	0 1	10,738	14,011
6	Orient F.A. Cup 6th Round	H	0 1	—	7,168	—
13	Bolton Wanderers	A	1 1	1 4	6,021	10,075
20	Sheffield Wednesday	H	1 0	—	7,284	—
27	Charlton Athletic F.A. Cup Semi-Final	H	2 0	1 1	13,399	20,451
30	Luton Town	A	1 1	—	17,578	—
Apr. 3	Portsmouth	A	2 0	1 0	9,668	12,007
5	Carlisle United	H	2 1	4 2	8,201	10,753
10	Luton Town	H	—	—	—	—
13	Sheffield United	A	—	1 3	—	11,537
17	Blackburn Rovers	A	—	0 4	—	10,638
24	Hull City	H	—	2 1	—	10,350
May 1	Sunderland	A	—	—	—	—
8	F.A. Cup Final					

London Mid-week League Fixtures—Season 1970-71

Date	1970/71	Opponents	Venue	F.	A.	LEAGUE CUP	FIXTURES	Date	1970/71	Opponents	Venue	F.	A.
Aug.	19	Colchester United	H	1	1	Oct.	21	Watford	H	3	1		
	26	Watford	H	5	1	Dec.	2	Colchester United	A	3	0		
Sep.	2	Peterborough United	H	1	1	Jan.	6	Luton Town	H	2	4		
	11	Luton Town	A	1	2	27	Aldershot	A	P	P			
	16	Aldershot	A	5	0	Feb.	3	Aldershot	H	5	2		
	30	Luton Town	H	2	1	10	Orient	A	2	1			
Oct.	7	Watford	A	0	6	17	Peterborough United	H	1	0			
	14	Colchester United	A	2	0	24	Brighton & Hove	H	4	0			
	28	Southend United	A	0	0	Mar.	3	Southend United	A	1	3		
Nov.	4	Aldershot	H	6	1	10	Orient	H	3	0			
	11	Orient	A	3	3	17	Watford	A	1	1			
	16	Peterborough United	A	3	5	24	Colchester United	H	3	0			
	25	Charlton Athletic	H	1	1	31	Brighton & Hove	A	P	P			
Dec.	9	Brighton & Hove	H	0	1	Apr.	6	Luton Town	A				
	23	Orient	H	4	0	14	Southend United	H					
	30	Southend United	H	P	P	19	Peterborough United	A					
Jan.	13	Brighton & Hove	A	1	1	28	Charlton Athletic	H					
	19	Charlton Athletic	A	3	5	May	4	Charlton Athletic	A				

SOUTH EASTERN COUNTIES LEAGUE FIXTURES—Division One

Date	Opponents	Venue	F.	A.
Aug.	Gillingham	H† 11a.m.	2	0
	Q.P.R.	A	1	2
	West Ham	H† 11a.m.	2	0
Sep.	Crystal Palace	A	1	0
	Brentford (L.C. 1st Rd.)	H†	2	0
	Charlton A.	H† 11a.m.	1	0
	Watford	A	2	0
Oct.	Tottenham	H† 11a.m.	1	1
	Reading *	A	2	1
	Ipswich	A	2	0
	Tottenham (L.C. 2nd Rd.)	A	0	3
	Luton	H† 11a.m.	2	1
	Arsenal	A	0	1
Nov.	Tottenham *	A	2	2
	Q.P.R.	H† 11a.m.	1	0
	Orient	A	1	3
	Tottenham * (replay)	H	0	2
	Reading	H† 11a.m.	1	0
	Gillingham	A	2	0
Dec.	Orient	H† 11a.m.	0	1
	Brentford	H† 11a.m.	4	0
	Chelsea	A	1	0
1971				
Jan.	Ipswich	H† 11a.m.	P	P
	Fulham	A	2	1
	Arsenal	H† 11a.m.	0	2
	Reading	A	P	P
	Watford	H† 11a.m.	4	0
Feb.	Charlton A.	A	1	1
	Luton	A	2	1
	Fulham	H† 11a.m.	1	0
Mar.				
	Brentford	A	2	1
	Crystal Palace	H† 11a.m.	2	0
	Chelsea	H† 11a.m.	1	0
Apr.	West Ham	A	0	0
	Tottenham	A		

† denotes Langley Park
* denotes Southern Junior Floodlight Cup

SOUTH EASTERN COUNTIES LEAGUE FIXTURES—Division Two

Date	Opponents	Venue	F.	A.
Aug.	West Ham	A	1	1
Sep.	Chelsea	A	1	4
	Fulham	H 11a.m.	2	2
	Tottenham	A	2	4
	Gillingham	H† 11a.m.	2	1
Oct.	Charlton A.	A	3	0
	Orient	H† 11a.m.	4	0
	Gillingham	A	2	0
	Chelsea	H† 11a.m.	1	0
	Orient	A	3	1
Nov.				
	Tottenham	H† 11a.m.	3	2
	West Ham	H† 11a.m.	P	P
	Fulham	A	7	3
Dec.	Fulham *	H† 11a.m.	5	1
	Crystal Palace	A	1	1
1971				
Jan.	Charlton A.	H† 11a.m.	P	P
	Crystal Palace	H† 11a.m.	2	3
	Gillingham *	A	5	2
	West Ham	H† 11a.m.	2	0
Feb.	Orient *	A	2	0
	Crystal Palace *	A	4	5
	Tottenham *	A	0	1
	Crystal Palace *	H† 11a.m.	3	1
Mar.	Charlton A. *	H† 11a.m.	1	3
	Chelsea *	A	5	2
	West Ham *	A	1	1
Apr.	Chelsea	H† 11a.m.	2	0
	Tottenham *	H† 11a.m.		
	Charlton A. *	A		
	Gillingham *	H† 11a.m.		
May.	Orient *	H† 11a.m.		

† denotes Metrogas Ground
* denotes League Division Two games

The Den Development Association

The season is rapidly drawing to a close and naturally we are anxious that the relationship which has been built up over the year is maintained. *It is essential that all those who have contributed to the weekly lottery during the season continue to do so during the close season. You can still win and moreover win on Football for although during the summer months there is no football in this country we shall continue with Australian football.* Don't let us down, keep in touch and try, if possible, to extend your influence amongst your friends. Who knows you may win a nice lump sum for your summer holidays. *During the close season we have quite a lot of work to do at The Den. This all costs money and you can help. The Den Development Association means exactly what its title denotes. All surplus after the payment of prizes and expenses goes to Millwall Football Club. It's not a lot, it could be more and you can make it more. Do try and help so that we can carry out all the work which is necessary to improve still more on our facilities for you and all supporters.*

RESULT OF COMPETITION WEEK 34 ENDING 3/4/71

POOL 1. 4 Home Teams Highest Combined Score £100

17 Goals highest unsold. Paid on 16. 3 winners at £33.33

08-09-27-48 W. Gasche, 1 Debnams Road, S.E.16. (413)
02-05-09-27 Mrs. Frost, 388 Guinness Buildings, Snowfields, S.E.1. (538)
05-09-27-48 Mr. R. Granson, 21 Egmont Street, New Cross, S.E.14. (45)

POOL 2. 4 Home Teams Highest Combined Score Against £100

15 Goals highest unsold. Paid on 14. 1 winner at £100

24-30-34-48 Mr. A. E. McBride, 72 Griffin Street, S.E.8. (496)

POOL 3. 4 Lowest Scores including Opponents £16

Paid on 0 Goals. 9 winners at £1.78

06-14-17-47 (441)	06-07-14-29 (500)	06-14-36-47 (143)
06-29-36-47 (345)	07-17-29-47 (475)	06-14-29-47 (470)
07-14-45-47 (12)	07-17-45-47 (15)	06-07-17-29 (342)

POOL 4 4 Matches each resulting in a 2-2 Draw

Not won. Snowball now stands at £57.

ALL POOLS SUBJECT TO RE-SCRUTINY

BEAT THE CLOCK for the game v. CARLISLE UNITED on 5th April 1971.

1st Goal	43 minutes	26 seconds
2nd Goal	56 minutes	59 seconds
3rd Goal	63 minutes	47 seconds

Treat Yourself To Timpson's Travel

FOR DETAILS OF COACH SERVICES,
DAY TOURS, OR COACH HIRE

Apply to:—A. TIMPSON & SONS LTD., CATFORD, S.E.6.

Phone: 01-698 4646

Ancient Order of Foresters Friendly Society

South London District.

offer the BEST BENEFITS for the
CHEAPEST CONTRIBUTIONS

Benefits include Grants for—

OPTICAL DENTAL SURGICAL APPLIANCES
CONVALESCENT HOME TREATMENT.

Local Office: 381 QUEENS ROAD, NEW CROSS, LONDON, S.E.14





*Welcome to
our visitors from*

LUTON TOWN

Ground: KENILWORTH ROAD, LUTON.

Club Colours: WHITE & BLACK

Manager: A. W. A. STOCK

Like Millwall, Luton Town were formed in 1885. They are reckoned to be the first club in the South of England to employ professional players. Two Clubs, Luton Wanderers and Luton Excelsior joined forces to form the Club now known as Luton Town who joined the Southern League in 1894 and three years later were elected to Division Two of the Football League. Their membership on this occasion lasted just three years, for after finishing in the penultimate position at the end of the 1899/1900 season they were voted out of the League to return once more to the Southern League. However along with the other members of that League they became a founder member of the Third Division (South) in 1920 and in 1936/37 won the Championship and were promoted to Division Two. Towards the middle of the 1950's Luton began to make their presence felt in Division Two and after finishing third in 1952/53 and sixth in 1953/54 they eventually made the First Division when they were runners up to Birmingham City. Both Clubs finished with 54 points, but Birmingham were top on goal average. Goal average helped Luton too, because close on their heels were Rotherham with the same points but a slightly inferior goal average. Interesting to note that one of the present day powers in the football world, Leeds United, were only a point away with 53 points. They, of course, made it the following season. Four years after their elevation to the 'football peerage' Luton went to Wembley, but lost to Nottingham Forest by 2-1. This defeat seemed to herald a decline in the Club's fortunes for the following season they finished bottom of Division One. Their fortunes flagged still further in 1962/3 when finishing bottom of Division Two they were back to square one, in Division Three. This was not to be the end of their tale of woe for in 1964/65 they were relegated to Division Four. There was only one way to go now and that was UP. Their climb back to respectability came in 1967/68 with the Championship of Division Four, followed by promotion to Division Two in 1969/70 and so back to where it all began over seventy years ago. *Now what — is it Division one?*

Pen Pictures

READ T. (Goalkeeper)

At one time last season, he found it difficult to get a game in his correct position and had some outings in the Reserves at inside-forward. When Starling was injured Read was preferred to the former Scottish under-23 International Sandy Davie, now with Southampton. Born at Haydock, Read's first club was Sheffield Wednesday and he joined Luton from Peterborough United.

RYAN J. (Right Back)

A real bargain came the way of Luton 12 months ago when they picked up this talented player free from Fulham, despite

the fact that he had had considerable first team experience at Craven Cottage. He began the season in the side, lost his place temporarily, but fought his way back to make 36 League appearances. Was born at Maidstone and had spells with Tonbridge and Arsenal before joining Fulham.

KEEN M. (Wing Half)

The Club Captain who had 10 years with Q.P.R., some of them under the present Luton manager, Alec Stock, before moving to Kenilworth Road. A fee of £18,500 was involved. During his spell with the Rangers he led them into the first division and was skipper when they won the League Cup. Was born at High Wycombe where he still lives and he joined Q.P.R. as a junior.

Pen Pictures

SLOUGH A. (Wing Half)

Is probably Luton's most valuable, young asset because he has long been wanted by several First Division Clubs. However Slough has made it very clear that he wants to continue to play for his home town club and, to that end, 12 months ago, asked for a long term contract. This he was given, one of three years with the option of a further three. Missed only one match in the promotion drive last season and has the added value of being able to play equally well in midfield or as sweeper at the back.

NICHOLL C. (Centre Half)

After this 22 years-old 6 feet 2 inches tall player had been instrumental in Halifax Town gaining a completely unexpected draw at Kenilworth Road last season, Luton went in with a big bid and, next day, the deal was completed at £30,000 which was then a record fee for the club. Yet, Nicholl had had barely a season in League football, having gone to The Shay from the Cheshire County League football, Witton Albion. At one time, he had a trial with Burnley, but was turned down. Lost his place towards the end of last season, but is expected to establish himself this time.

MOORE J.

Has had five years with Luton whom he joined when Motherwell unexpectedly gave him a free transfer. Is nearing the 200 mark in League appearances for Luton, 22 of them last season. A strong defensive player, he excels as a member of the back four.

RYAN J. (Outside Right)

Almost certainly cost the greater part of the £35,000 which Luton paid Manchester United with whom he could not secure a regular place because of competition for both wing positions. As a result, he became known as one of the best players in the Central League and was most impressive when he played in all four matches for his new club during their tour of Spain. A Scot from Stirling, he is two-footed and can take a turn on either wing.

BUSBY V. (Inside Right)

Made a quite remarkable impact when he was brought into the team towards the end of last season, only weeks after having left the amateur ranks with Wycombe Wanderers. Rising 21, he developed a fine understanding as a striker with top marksman, Malcolm Macdonald, and scored some vital goals. Well built, he plays with poise and experience that belie his comparatively short spell as a professional and could well reach the top flight. Had a short spell with Q.P.R. as an amateur.



**MALCOLM
MACDONALD**

LUTON TOWN

Full Back turned Centre Forward may sound a little stupid to the football purists, but they may have to change their minds after this season. MALCOLM MACDONALD who alternated between full back and inside forward whilst with Fulham found when he joined Luton Town that after operating in a variety of positions the shortest distance between two points is a straight line and this geometrical fact brought him 25 goals in 47 League appearances. Obviously the original intention was to use him in defence, but his pre-occupation with goal getting in pre-season matches prompted Luton to allow this stocky well built player to show his powers of opportunism. This has paid off. His goalscoring feats this season have been a powerful contribution to his Club's success. Before he emerged on the League scene with Fulham, Malcolm played with Tonbridge.

LEAGUE DIVISION TWO 1970-71

	P.	W.	D.	L.	F.	A.	PTS.
Leicester	35	19	10	6	49	27	48
Cardiff	34	17	11	6	56	28	45
Sheffield Utd.	35	17	11	7	59	37	45
Luton	34	16	11	7	50	27	43
Hull	35	16	11	8	45	32	43
Carlisle	36	15	12	9	51	39	42
Middlesbrough	35	17	7	11	53	36	41
Norwich	36	14	13	9	46	42	41
Birmingham	35	16	8	11	55	42	40
MILLWALL	37	15	9	13	48	40	39
Swindon	35	13	8	14	51	42	34
Q.P.R.	35	12	9	14	47	47	33
Sunderland	35	12	9	14	43	48	33
Oxford	35	11	11	13	34	43	33
Sheffield Wed.	37	12	9	16	47	61	33
Orient	35	9	14	12	25	40	32
Portsmouth	35	10	10	15	42	52	30
Watford	35	8	11	16	32	51	27
Bristol C.	35	8	9	18	39	57	25
Blackburn	35	6	11	18	32	59	23
Charlton A.	34	6	10	18	31	55	22
Bolton	36	7	8	21	31	61	22

LONDON MID-WEEK LEAGUE CUP

Luton	13	8	2	3	27	15	18
MILLWALL	11	8	1	2	28	12	17
Southend	10	7	3	0	17	4	17
Watford	11	5	3	3	18	12	13
Peterborough	14	5	2	7	18	17	12
Orient	11	4	1	6	12	19	9
Brighton	10	4	1	5	13	23	9
Charlton	10	2	2	6	9	18	6
Colchester	9	1	3	5	9	18	5
Aldershot	11	0	4	7	12	25	4

S.E. COUNTIES LEAGUE—DIV. ONE

Tottenham	26	20	5	1	86	27	45
Arsenal	28	20	4	4	74	20	44
MILLWALL	27	19	3	5	39	15	41
Chelsea	26	17	1	8	67	30	35
West Ham	30	14	5	11	52	45	33
Ipswich	26	12	6	8	37	29	30
Crystal P.	28	11	8	9	48	44	30
Luton	28	11	5	12	58	52	27
Orient	26	9	7	10	39	37	24
Charlton	23	9	6	8	35	37	24
Q.P.R.	28	9	3	16	38	59	21
Gillingham	22	9	2	11	35	47	20
Reading	27	3	8	16	22	71	14
Watford	25	4	5	16	26	67	13
Fulham	27	5	2	20	53	58	12
Brentford	25	4	0	21	27	78	8

S.E. COUNTIES LEAGUE—DIV. TWO

Tottenham	12	8	1	3	31	13	17
Crystal P.	11	6	4	1	22	14	16
MILLWALL	9	6	1	2	27	13	13
Chelsea	11	4	4	3	25	17	12
Charlton	10	4	2	4	29	17	10
West Ham	10	3	4	3	24	27	10
Gillingham	12	3	2	7	26	40	8
Orient	11	3	2	6	19	32	8
Fulham	12	1	2	9	18	48	4

S.E. COUNTIES LEAGUE—DIV. TWO CUP

Crystal P.	16	12	3	1	53	18	27
Tottenham	16	10	4	2	50	22	24
Chelsea	16	9	3	4	52	28	21
MILLWALL	16	9	3	4	37	25	21
Charlton	16	5	3	8	24	38	13
West Ham	16	3	4	9	16	34	10
Fulham	16	4	3	9	32	53	9
Gillingham	15	2	3	10	23	45	7
Orient	15	2	4	9	16	40	6

TEAMS AND APPEARANCES

Football League 1970-71

	League	F.A. Cup	Lge. Cup
	Apps. Gls.	Apps. Gls.	Apps. Gls.
B. KING	37	1	3
B. BROWN	37	1	3
H. CRIPPS	37	9	3
A. DORNEY	37	1	3
B. KITCHENER	37	2	3
D. BURNETT	35	1	3
D. POSSEE	35	11	1
B. BRIDGES	30	13	1
G. BOLLAND	37	4	1
E. DUNPHY	34	2	1
D. ALLDER	34	2	1
S. BROWN	1	13	1
W. NEIL	6	1	1
G. JACKS	9		1
A. GARNER	2		
W. HOLMES	1		
D. COXHILL	1		
OPPONENTS			

TEAMS AND APPEARANCES

London Mid-Week League 1970-71

	League	Lge. Cup	L.C. Cup
	Apps. Gls.	Apps. Gls.	Apps. Gls.
D. MACKIE	16	11	1
G. BEALE	12	2	
J. BURKETT	17	11	1
D. COXHILL	15	1	4
A. GARNER	17	1	1
P. LALLY	17	11	1
S. BROWN	13	4	3
J. GODFREY	11	3	3
G. DUCK	17	11	9
W. NEIL	5	3	1
B. SALVAGE	16	6	4
T. SAMPSON	3	4	1
W. HOLMES	11	4	9
A. BUSHELL	1		3
G. JACKS	9	2	11
M. KELLY	1		1
A. BALLARD	1		
D. FRANCIS	3		1
E. DUNPHY			1
M. DAVIES			1
OPPONENTS	2		

S.E. Counties League—Div. 1 1970-1971

League Cup in ()	Appearances	Goals
A. BALLARD	(1) 27	
A. BUSHELL	(1) 27	10
J. FLAHERTY	(1) 13	
P. NAYLOR	15 [Sub 2]	1
G. BEALE	(1) 18	1
T. SAMPSON	(1) 26	
M. HOBBS	(1) 14	(1) 1
R. COMPTON	15	6
M. DAVIES	(1) 19	3
M. KELLY	(1) 26	8
S. WEBB	(1) 11	2
G. GIBBS	(1) 11	2
J. JOHNSON	(1) 18	(1) 2
A. MARTIN	3	
R. PITTAWAY	(1) 16	
D. RAINBIRD	15	
L. MUNOZ	(1) 2	
S. BARCLAY	5 [Sub 1]	
F. GALE	1	
R. BUCKLE	11	1
K. ENVER	3	
J. MULROONEY	2	2
OPPONENTS		

S.E. Counties League—Div. 2 1970-71

League Cup in ()	Appearances	Goals
G. VAN HAMME	(4)	
L. MUNOZ	(7) 6	
M. BUCKINGHAM	(2)	
S. BARCLAY	(5) 3	
R. PITTAWAY	(6) 1	
B. GORIN	(1)	
T. PEARCE	(15) 8	(3)
G. GIBBS	(2)	
K. ENVER	(8) 7	
R. BUCKLE	(10)	(5)
A. MARTIN	(5) 6	(2) 1
L. BEAUCHAMP	(3) 2	1
P. NAYLOR	(3)	
F. GALE	(12) 5	
J. MULROONEY	(13) 6	
S. WEBB	(6) 2	(5) 3
T. BOWDEN	(9) 6 (Sub 1)	
D. RAINBIRD	(3)	
M. LINDSAY	(1)	
R. COMPTON	(9) 2	(7) 2
J. JOHNSON	(8) 1	(3) 2
D. GROOM	(2)	
M. TOKELM	(11) 4	(2)
A. PALOMBO	(7) 7	(2) 5
J. FLAHERTY	(3) 3	
M. HOBBS	(5) 6	(3) 5
A. JAMES	(2) 1	
G. TOWNSEND	(3) 5	
M. DAVIES	(4) 5	(1) 6
S. LOCKETT	(3) 2	(1)
M. KELLY	(2) 1	
M. KOCUREK	(1) 3	
A. BALLARD	1	
A. BUSHELL	(1) 1	
T. SAMPSON	(1) 1	
V. CLARKE	3	1
OPPONENTS		(3)

An Athletic Meeting for Footballers

If you would like to see your favourite Footballer functioning in a less familiar role make a point of being at THE WIMBLEDON GREYHOUND STADIUM ON TUESDAY 4th MAY when commencing at 8 p.m. All the London Club Professionals will be competing against one another in a combined Athletics and Skills Meeting. Millwall fans will be able to see their own favourites, Barry Bridges, Harry Cripps, Derek Possee and other members of our first team squad pitting their athletic talents against the leading lights from the other London Clubs. What is more this event which has been sponsored by ESSO is in aid of the CYSTIC FIBROSIS RESEARCH FUND, a worthwhile cause. *Prices of tickets for this event, the first of its kind in London are:*

£1.50 £1.00 50p and 25p (Schoolchildren)

Tickets are available from:

R. DAVIS PROMOTIONS LTD. (ATHLETICS),
1 CURZONFIELD HOUSE,
42 CURZON STREET,
LONDON, W1Y 7RF.

Match Ball Donations

Match Ball Donors for this season are listed hereunder. We are most grateful to these generous benefactors. The total of 14 for the season is a record for the Club.

15th August, 1970 v OXFORD UNITED - Directors of R.T.S. Steel, Messrs W. Sanderson and C. Thresher.

29th August 1970 v PORTSMOUTH - Ron Lorman, a shareholder.

14th November 1970 v BOLTON WANDERERS - Paul Coomber, a supporter

21st November 1970 v BRISTOL CITY - John Monks of Ward & Woolverton Ltd., Club Printers.

5th December 1970 v BIRMINGHAM CITY - Albert Barrett, shareholder

19th December 1970 v CARDIFF CITY - Mr J. S. Scott of John Lennaton & Son Ltd., West Ferry Road, Millwall, E.14

9th January 1971 v SWINDON TOWN - Mr P. Bramble, a supporter serving on H.M.S. Argonaut.

23rd January 1971 v NORWICH CITY - Millwall Supporters Club.

30th January 1971 v MIDDLESBROUGH - Mr Vic Carter, a supporter.

6th March 1971 v ORIENT - Mr Cyril Berlin, life long supporter and season ticket holder.

20th March 1971 v SHEFFIELD WEDNESDAY - Ron Champ, Mine Host of 'The Horns', Grange Road, Bermondsey.

27th March 1971 v CHARLTON ATHLETIC - Mr Geoff Knight, a shareholder.

10th April 1971 v LUTON TOWN - Mr Harry Hill of Millwall Supporters Club.

24th April 1971 v HULL CITY - Hopfield Petrol Filling Station (GULF), Old Kent Road, S.E. 15.

Future Fixtures here at The Den

London Mid Week League Cup

Wednesday 14th April K.O. 7 p.m.

SOUTHEND UNITED

Football League Division Two

Saturday 24th April K.O. 3 p.m.

HULL CITY

The Line Up



13864

MILLWALL (4)

SHIRTS: WHITE
SHORTS: WHITE

Bryan KING	1
* Brian BROWN	2
Harry CRIPPS <i>Captain</i>	3
Alan DORNEY	4
Barry KITCHENER	5
Dennis BURNETT	6
* Derek POSSEE	7
Gordon BOLLAND	8
* Barry BRIDGES	9
Eamonn DUNPHY	10
Doug ALLDER	11
To be announced BROWN (5)	12

Referee
Mr. V. JAMES
York

LUTON TOWN (0)

SHIRTS: RED
SHORTS: BLACK

Tony READ
John RYAN
Alan SLOUGH BANNISTER
Don GIVENS HOY
Chris NICHOLL SLOUGH
John MOORE
Jimmy RYAN
Vivian BUSBY
Malcolm MACDONALD
Mike KEEN <i>Captain</i>
Peter Anderson COURT
To be announced GIVENS

Linesmen

Mr. R. N. MORPHEW
Ipswich

Red Flag

Mr. T. G. BUNE
Billingshurst

Yellow Flag