

PORTSMOUTH



versus

LUTON TOWN

Football League
Division Two

Saturday
20 February 1971
Kick-off 3 p.m.



Featuring

PROFILE—Alec Stock
of Luton Town

THE UP's & DOWN's
OF PROMOTION

OFFICIAL JOURNAL AND PROGRAMME

Incorporating The Football League Review

Price 5p.

SEAGERS

FOR YOUR

DULUX PAINTS

choice of over 350 colours in gloss
and 300 in emulsion

complete range of primers

WEATHERSHIELD exterior finish

wide range of wallpapers from stock

HAROLD SEAGER LTD

DECORATORS' MERCHANTS

164 - 168 Fratton Road, Portsmouth Tel. 21611/2

The Portsmouth Football Club

OFFICIAL

1970-71 HANDBOOK

available only from the

Fundraising Office, Fratton Park

Price 2 shillings & 6 pence



JIMMY DICKINSON comments . . .

The shock result of the F.A. Cup this season must be the Fourth Division Colchester's 3-2 defeat of Division One League Leaders Leeds United, at Colchester last Saturday.

In spite of what many respected

managers in the game have said, that Yeovil's defeat of Sunderland could never be repeated, Colchester played the game of their life to beat United fairly and squarely.

It is surprising that the Colchester side are not top of their division and it would appear from this result that certain Colchester players need the stimulus of a big game to raise their performances to top lick.

I remember a similar result in 1950 when an American side beat England 1-0, which was no more of a disgrace for us to lose that day than it was for Leeds United last Saturday.

Pompey almost caused as much of a shock against Arsenal at Highbury a couple of weeks back as Colchester. When the result was at 2-2 it looked as though we might win.

An interesting point about such results is that when top sides are drawn to play minor clubs they must be quite sure that their opponents are coming out to really go at them. Yet they don't seem to be able, until a certain stage in the game, to raise their game to meet the onslaught.

PORTSMOUTH FOOTBALL CO. LTD.

Fratton Park, Frogmore Road, Portsmouth PO4 8RA, Tel. 31204

President: Field Marshal Viscount Montgomery of Alamein, KG, GCB, DSO

Vice-Presidents: R. Vernon-Stokes, J. H. Sparshatt

Chairman: J. D. P. Collett

Vice-Chairman: A. R. L. Oliver, JP

Directors:

G. C. Sprigings, Dr. I. M. McLachlan,
A. L. Blake, W. Wain, D. J. Sparshatt,
E. W. Reeves

General Manager: G. C. Smith

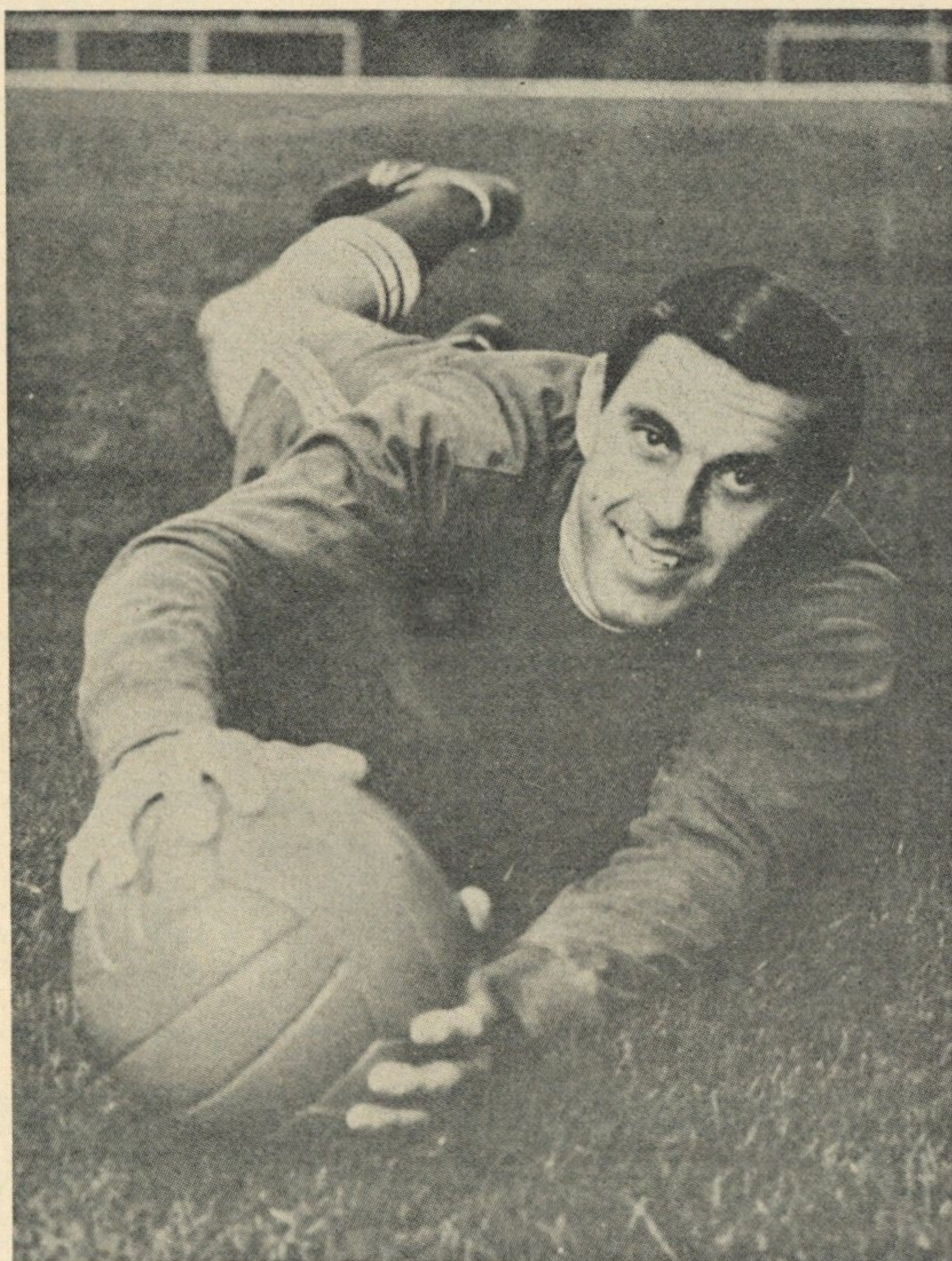
Team Manager: R. Tindall

Secretary: J. W. Dickinson

Chief Scout: A. Barton

Trainer: G. Neave

Groundsman: D. Reid



JOHN MILKINS

John's benefit season will be starting soon and a match against First Division opponents can be anticipated.

MR TINDALL'S ELLAND ROAD VISIT . . .

Some months ago Leeds United Manager, Mr. Don Revie, made public that he was prepared to welcome any young Football League manager who cared to visit Elland Road and see how his fine club is administered.

Portsmouth's manager, Mr. Ron Tindall, took advantage of this offer last week when he went to Leeds to study Mr. Revie's methods.

He worked out with United's first-team squad with their trainer, Les Cocker. Whilst on another occasion he joined coach Syd Owen for a session with the Leeds youngsters.

Many hours were also spent talking with and listening to Don Revie and assistant manager, Maurice Lindley. The subjects discussed included man management, administration, scouting, finance and all the other varied items that make up the complex football manager's job.

Mr. Tindall has joined a growing band of managers seeking greater expertise who have visited Elland Road.

It is certainly worth while recording that the Pompey manager's visit coincided with Leeds build-up for their F.A. Cup-tie at Colchester.

The Up's & Downs of Promotion

With almost three-quarters of the season now completed the situation at the top of the Second Division this season again emphasises the intense competitiveness in this section of the Football League.

There are seven or so sides still in the promotion race and as to who will eventually wind up Division champions is anybody's guess.

Of course, whoever finally wins promotion will find they are only just beginning the battle as such sides as Q.P.R. and Blackpool will confirm.

Since the last war there have been forty-eight promotion places won into the First Division. These have been shared by thirty-two different clubs (Sheffield Wed. have gone up four times) and the average stay in the top section of any promoted club is six seasons.

Only Arsenal and Manchester United have retained First Division status continuously since before the war. Of the clubs going up since Hitler's interruption, Burnley (twenty-four seasons and that could very well come to an end this season) have remained longest, followed by West Brom. (twenty-two seasons) and Tottenham (twenty-one).

The dream of every club elected to the Football League is Division One. Occasionally a Charlton or an Ipswich will pop up to delight us all by rising to the very top of the tree. But for most of the smaller clubs the prospect of top-grade soccer is virtually nil. Of the 113 clubs who have played in The Football League since it started in 1888 only forty-eight have ever attained First Division status. Perhaps Oxford United might in the near future boost this total.

However, should either Hull City or Carlisle achieve their promotion target this season it will be the first time in their history and will increase the total to forty-nine clubs who have attained the magic of First Division status.



**Free Draw
for
Cup Final
Tickets**

**MATCH
No. 9**



SOUTHDOWN COACH EXCURSIONS

to the AWAY MATCHES

Day and half day trips to places of beauty, historic interest and sporting events. BOOK NOW at any Southdown office or at the Fund Raising office

**DAILY
EXPRESS SERVICES**
PORTSMOUTH
and GOSPORT to and
from LONDON with
connections to all parts of the
Country.

PRIVATE HIRE

Our local private hire departments
will be pleased to arrange coach
travel, admission tickets, catering
and any other requirements for
your next party outing.

Full details from any office, local agent
or from:

SOUTHDOWN MOTOR SERVICES LTD.

Hyde Park Road Portsmouth
PO3 4BE Tel. 22311

Manufacturers of all types of Commercial Vehicle Bodywork

SPARSHATT'S

COMMERCIAL VEHICLE DISTRIBUTORS FOR

SCAMMELL, LEYLAND, ALBION & A.E.C.

J.H. SPARSHATT & SONS LTD.

BURRFIELDS ROAD, PORTSMOUTH Tel: Ports. 60361
and Ashford (Kent), Horsham, Aldershot, Lancing, Croydon & Bexhill

Telephone 32163

ODEON

SOUTHSEA

SUNDAY 21st FEBRUARY FOR 7 DAYS

Robert Stephens Colin Blakely

The Private Life of Sherlock Holmes (A)

Sunday 4.20, 8.25 Weekdays 4.15, 8.15
Doors open Sunday 4.00, Weekdays 2.15

also **UNDERGROUND (a)**

Robert Goulet Daniele Gaubert
Sunday 6.35 Weekdays 2.25, 6.25

LUTON TOWN

One of the Souths First Professional Soccer Clubs . . .

a brief history of "The Hatters"

Luton Town was formed in 1885 when Luton Wanderers and Luton Excelsior joined forces. The Wanderers at that time, had already a claim to local fame, for they had played the then famous Old Etonians in an F.A. Cup-tie and, in fact, drawn the match. Luton have at least one claim to Southern Soccer fame. They are actually the oldest professional football club in the South of England. In 1890 they made an offer of five shillings a week to each of three local players, the Whitby brothers and a man named Read. At the end of that season it was decided to pay the whole of the first team the agreed amount of two shillings and sixpence a week, with an extra sixpence for away matches. To this was the added incentive of payment of working time lost before twelve noon on Saturdays.

The following season the wages of local players were doubled, and Julian, a halfback, was transferred from Woolwich Arsenal to become Captain, he, of course, received a higher wage!

In 1893 Alderman Harry Arnold became associated with the club. He eventually became chairman and remained so for nearly forty years.

In season 1900/1901, Luton returned to the Southern League after a spell in the Second Division of the Football League, and remained in membership until it became the Third Division (south) of the Football League.

On formation of the club the colours adopted were navy blue and pink halves shirts and caps, and it is recorded in the minutes that, 'both caps and shirt must be worn by each player on the field'.

In 1889/90 the club colours were changed to Cochineal, and in 1900/01 to sky blue shirts and black shorts. The present day colours of White Shirts and Black shorts were adopted in 1920.

Luton reached the final of the F.A. Cup for the only time in their history in 1959. They lost to Nottingham Forest 2-1. The following season saw the start of a rapid decline in the Club's fortunes. They finished bottom of Division One. 1962/63 they were relegated to the Third Division and 1964/65 down again to the Fourth Division.

With only one way to go, Luton finished Fourth Division Champions in 1967/68 and last season won promotion to the Second Division as runners-up to Orient in Division Three. As the League table indicates, 'The Hatters' are superbly situated in the league table at the moment to complete their dash back to the First Division.

FOOTBALL AT FRATTON PARK:

Saturday 20th February 1971

K.O. 3 p.m.

LUTON TOWN'S 1969-70 STATISTICS

Luton finished runners-up in Division Three last season to win promotion. Their league record was as follows:

P	W	D	L	F	A	W	D	L	F	A	Pts.
46	13	8	2	46	15	10	6	7	31	28	60

During the close season David Court (Arsenal) and Roger Hoy (Crystal Palace) were signed by the club.

Malcolm MacDonald topped the Third Division goalscorers chart with 28 goals. Matt Tees was the club's second highest goalscorer with 13 goals.

The club's biggest win of the season when they beat Bradford City 5-0 and Reading by the same score.



LUTON TOWN

The remarkable resurgence of Luton Town in recent seasons has been continued this season in the Second Division and their current league position augurs for an exciting match here at Fratton Park today.

Although 'The Hatters' haven't visited Fratton Park for a number of seasons, a number of their current team are familiar figures with Pompey fans.

Matt Tees, one-time Charlton and Grimsby forward and Mike Keen, who captained Q.P.R.'s first match on their return to the Second Division in 1967/68.

However, everyone's eyes will be on big Malcolm McDonald, Luton Town's prolific goal striker, signed from Fulham, Malcolm has created a great deal of interest and other clubs with his consistent performances and regular goalscoring feats. He also won a Television Long Throw competition this season.

Royal Blue Shirts and Shorts, Red and White Trim

PORTSMOUTH (0)

13,661

Trainer — Gordon Neave

John MILKINS	Fred SMITH	George LEY	Eoin HAND	Colin BLANT	Dave MUNKS	Norman PIPER	Mike TREBILCOCK	Ray HIRON	Brian BROMLEY	Nick JENNINGS	Tom YOULDEN
Team Changes							POINTER		TRAVERS		
Scorers											
1	2	3	4	5	6	7	8	9	10	11	12
Terry REED	John RYAN	Alan SLOUGH	Roger HOY	Chris NICHOLL	John MOORE	Jim RYAN	Don GIBBONS	Malcolm MacDONALD	Mike KEEN	Pete ANDERSON	Jack BANNISTER
Team Changes							GIVENS				
Scorers							*				

White Shirts, Black Shorts

LUTON TOWN (1)

OFFICIALS

LINESMEN

red flag : MR. B. R. BANWELL

yellow flag: MR. W. H. BONBROMM

REFEREE:

MR. A. P. OLIVER

Mr Oliver is employed by an aircraft engineering company as a Senior Technical Author. He is married and has a young son.

RECORD OF PREVIOUS MATCHES

	P	W	D	L	F	A	Pts
Home	10	5	4	1	23	10	14
Away	11	1	2	8	11	20	4
	21	6	6	9	34	30	18



PROFILE

It has been success all the way for Alec Stock, the manager with the golden touch. At the moment he's chasing promotion for the fifth time in his managerial career!

Stock, the manager, first hit the headlines in 1948 when he steered Southern League Yeovil Town to astonishing Cup victories over Bury and Sunderland. He was Yeovil's player-manager in those days and his achievements at The Huish set him on the road to a most successful managerial career. In August 1959 he was appointed manager of Orient and built the side which won promotion to Division II in 1956.

He moved to Arsenal as assistant-manager in 1956 but he was greatly disillusioned by conditions on the coaching side at Highbury and he ended his brief and unhappy stay by returning to Orient within a couple of months. The challenge of Italian soccer was laid before him and he took control of Roma F.C. but once again returned to Orient when they were in trouble.

Alec Stock finally severed his connections with Orient in March 1959 and three months later took up his position with Queens Park Rangers, whose success under his able command was phenomenal. They won the League Cup and rose from the Third to the First Division. It's not generally known that Mr. Stock was a highly successful inside-forward with Rangers before the war and he thus provides one of a few quite rare cases of a manager winning honours with a club he previously served as a player.

It was one of the biggest shocks of the season when Queens Park Rangers dispensed with his services in November 1968. But within weeks he was back in the game – as Luton Town's manager.

Last season, at the end of his first full campaign in charge, Luton gained promotion to the Second Division and now they are among the most serious challengers for further upgrading.

Tony Pullein

THE MUCH TRAVELLED –
EVER SUCCESSFUL
MANAGER OF
LUTON TOWN

ALEC STOCK



Mike Keen of Luton Town

6 ft. Mike was born in High Wycombe. A product of Queens Park Rangers youth scheme, Mike captained the Rangers to promotion from Division Three to the First Division in successive seasons.



**PROFESSIONAL
LAUNDERERS AND
DRY CLEANERS**

OF PORTSMOUTH

Telephone 63311

**Our vans collect and
deliver in all districts**

BRANCH SHOP IN MOST AREAS



Buy the
**FOOTBALL
MAIL**
Every Saturday

RESULTS-REPORTS-POOLS

**COOMER'S COMPLETE
PRINT & PACKAGING SERVICE**

Presentation

Display Cartons Blister Packs Brochures Leaflets

Protection in transit

Stitched Boxes Glued Cartons Latexed Blanks
Single and Double Walled Containers

ARTHUR COOMER LTD.

Grove Road, Farlington, Portsmouth. Tel. Cosham 76822-3

SUPPORTER'S

Start the New Year right!

BUY A

**SEASON
TICKET**

They are still available
at **REDUCED RATES**

full details from
Jimmy Dickinson the
Club Secretary at the
Main Office during normal
business hours

Excursions.

The excursion to the match at Blackburn will leave the Club at 11 p.m. next Friday evening, picking up at the usual points. The fare is £2.75. Bookings can be taken in the clubroom today. It is hoped to arrange an overnight stop on the day of the match against Sunderland in March. The fare and hotel accommodation is expected to be in the region of £7. For more details please contact the excursion secretary.

Subscriptions.

Owing to the postal strike it has not been possible to send out the usual reminders to members with subscriptions due. Please check your membership card today, if or when payment is due bring your card and subscription to the Club

**JOIN THE
POMPEY
SUPPORTERS CLUB**

for details write to

**Mrs. V. West
P.F.S.C., Frogmore Road
Portsmouth**

*Club Lounge open 4 nights a
week and every match day*

**Football Mail
SCOREBOARD**

**A
B
C
D
E
F**

ARSENAL
IPSWICH

BLACKPOOL
DERBY

CRYSTAL PALACE
COVENTRY

EVERTON
LIVERPOOL

LEEDS
WOLVES

MANCHESTER U.
SOUTHAMPTON

**G
H
J
K
L
M
N
O**

NEWCASTLE
TOTTENHAM

NOTTS FOREST
BURNLEY

STOKE
CHELSEA

WEST BROMWICH
HUDDERSFIELD

WEST HAM
MANCHESTER C.

BIRMINGHAM
BOLTON

BLACKBURN
CARLISLE

BRISTOL CITY
MILLWALL

**P
R
S
T
V
W
Y
Z**

CARDIFF
CHARLTON

LEICESTER
NORWICH

MIDDLESBROUGH
SHEFFIELD W.

QUEENS P. R.
HULL

SHEFFIELD U.
SUNDERLAND

SWINDON
OXFORD

WATFORD
ORIENT

ALDERSHOT
EXETER

FIXTURES 1970-71

Aug.			
15 Sat	Norwich	1-1	15,100
19 Wed	PLYMOUTH (L.C.)	2-0	12,846
22 Sat	BOLTON	4-0	15,743
29 Sat	Millwall	0-0	8,347
Sept.			
2 Wed	ORIENT	1-1	15,218
5 Sat	SHEFFIELD W.	2-0	18,712
9 Wed	WALSALL (L.C.)	1-0	15,967
12 Sat	Swindon	1-2	14,682
19 Sat	BIRMINGHAM	1-0	18,037
26 Sat	Leicester	0-2	25,613
30 Wed	SHEFFIELD U.	1-5	16,587
Oct.			
3 Sat	WATFORD	5-0	15,712
7 Wed	Manchester U. (L.C.)	0-1	32,598
10 Sat	Middlesbrough	2-3	18,775
17 Sat	NORWICH	0-2	15,064
24 Sat	Q.P.R.	0-2	14,709
28 Wed	Cardiff	0-1	18,510
31 Sat	BLACKBURN	4-1	9,936
Nov.			
7 Sat	Charlton	2-2	8,420
14 Sat	SUNDERLAND	2-1	10,474
21 Sat	Luton	1-2	16,876
28 Sat	HULL CITY	2-2	13,360
Dec.			
5 Sat	Carlisle	0-6	7,540
9 Wed			
12 Sat	OXFORD U.	1-0	11,356
19 Sat	Bolton W.	1-1	5,528
26 Sat	BRISTOL CITY	Postp'd	
Jan.			
2 Sat	SHEFFIELD U. (3)	2-0	20,556
9 Sat	Sheffield U.	0-2	18,685
16 Sat	CARDIFF	1-3	24,747
23 Sat	ARSENAL (4)	1-1	39,659
30 Sat	Hull City	1-0	19,958
Feb.			
1 Mon	Arsenal (4) (Re-play)	2-3	47,865
6 Sat	CARLISLE	1-4	13,219
13 Sat	Oxford	Postp'd	
20 Sat	LUTON TOWN		
27 Sat	Blackburn		
Mar.			
6 Sat	Q.P.R.		
13 Sat	Sunderland		
20 Sat	CHARLTON		
27 Sat	Sheffield W.		
Apr.			
3 Sat	MILLWALL		
9 Fri	Watford		
10 Sat	Bristol City		
12 Mon	SWINDON		
17 Sat	MIDDLESBORO		
24 Sat	Birmingham		
26 Mon	Orient		
May			
1 Sat	LEICESTER		

APPEARANCES

1970/71	Lge	Lge Cup	F.A. Cup	Total
Milkins	27	3	3	33
Standen	—	—	—	—
Smith	16	3	3	22
Blant	27	3	3	33
Travers	1	—	—	1
Ley	24	3	2	29
Youlden	3	—	1	4
Harris	—	—	—	—
Hand	12	—	3	15
Munks	27	3	3	33
Piper	27	3	3	33
Bromley	23	2	3	28
Pointer	5	—	2	7
McCann	17	3	—	20
Hiron	24	3	3	30
Jennings	26	3	2	31
Storrie	18	3	—	20
Trebilcock	14	1	2	17

GOALSCORERS

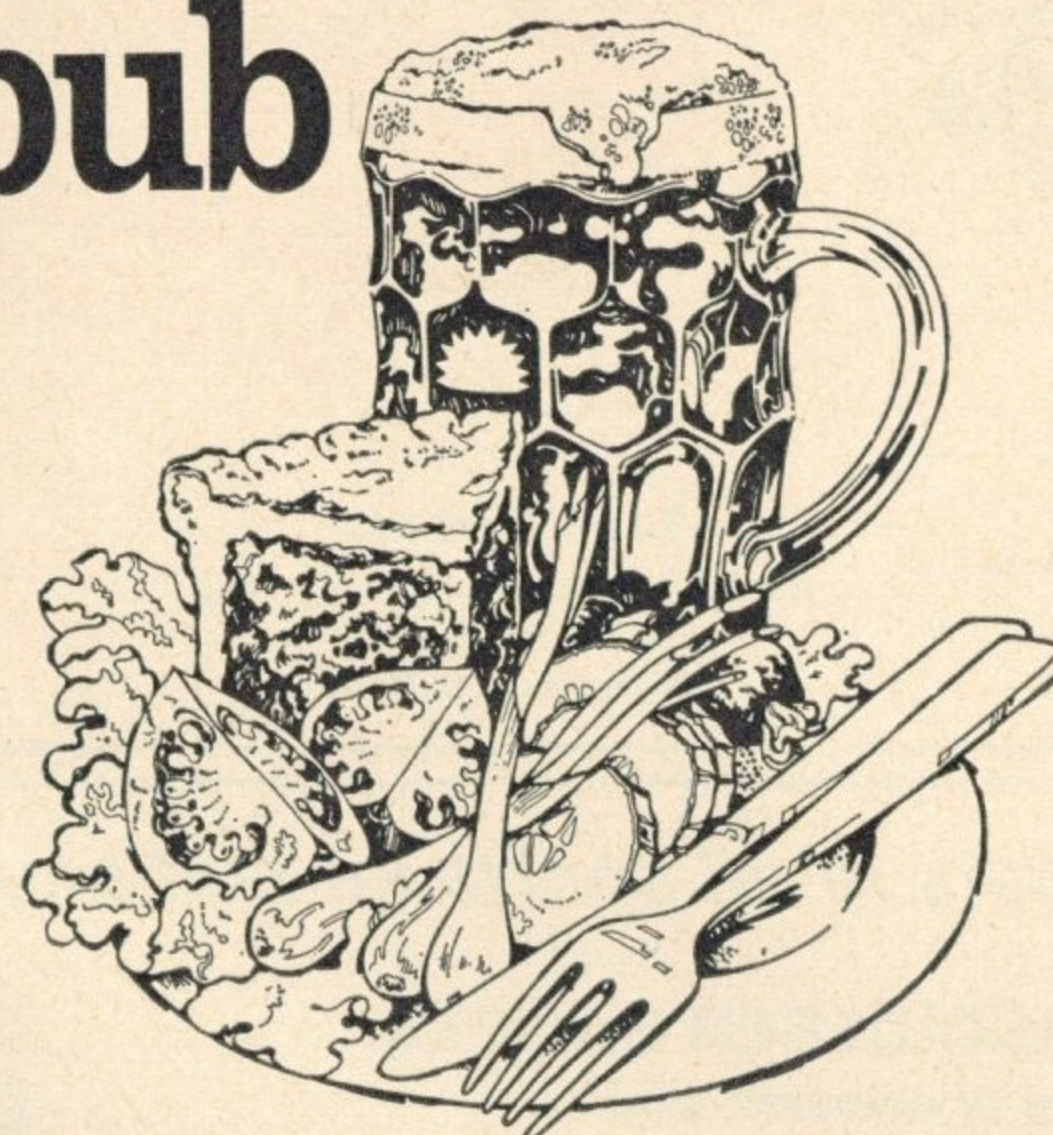
Hiron	11	Bromley	1
Trebilcock	9	Munks	1
Jennings	7	Youlden	1
McCann	4	Ley	1
Piper	4	Smith	—
Storrie	2	Hand	—
Pointer	2	Blant	—

DIVISION TWO TABLE

	P	W	D	L	F	A	P
Sheffield Utd.	25	14	9	5	49	32	37
Cardiff	27	14	8	5	47	23	36
Hull City	27	14	7	6	39	25	35
Luton	26	13	8	5	40	19	34
Middlesbrough	28	14	6	8	45	30	34
Carlisle	28	12	10	6	44	30	34
Leicester	26	13	7	6	39	25	33
Norwich	28	10	12	6	36	35	32
Swindon	28	11	8	9	41	29	30
Millwall	27	11	6	10	37	31	28
Birmingham	28	10	8	10	38	37	28
Sunderland	28	11	6	11	37	39	28
Sheffield W.	29	9	9	11	38	52	27
Oxford	26	10	6	10	29	33	26
Q.P.R.	26	8	7	11	35	39	22
Portsmouth	26	8	6	12	34	43	22
Orient	26	5	12	9	20	34	22
Watford	27	6	9	12	27	41	21
Bolton	29	7	5	17	28	46	19
Blackburn	27	5	8	14	26	43	18
Bristol City	27	5	7	15	29	48	17
Charlton	26	3	8	15	23	47	14

Correct to Saturday 13th February 1971

There's more than good beer at a Brickwoods pub



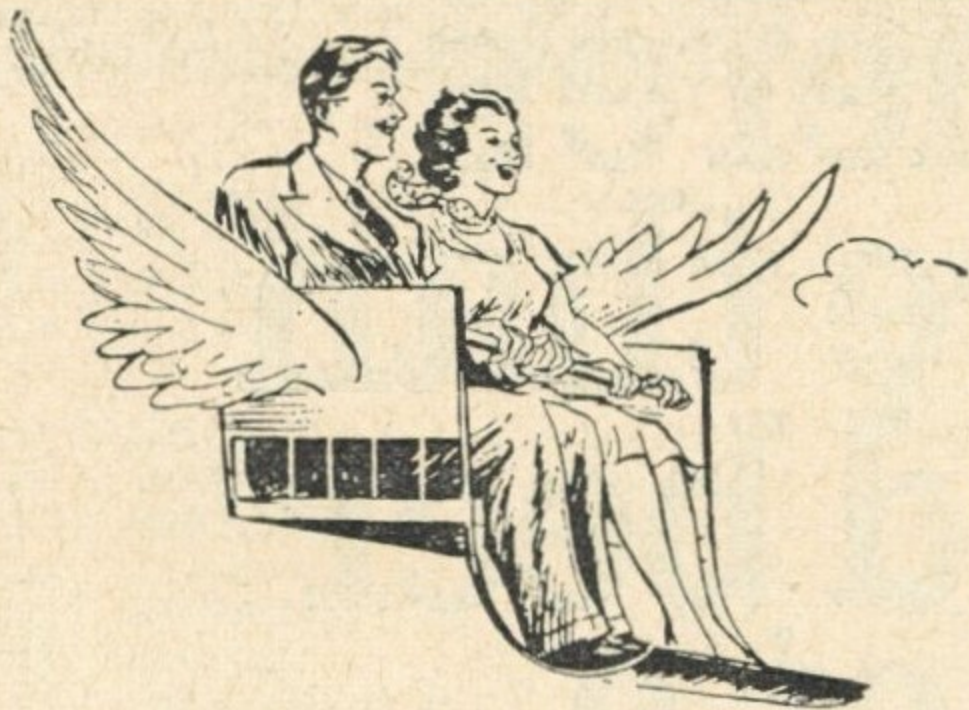
forthcoming attraction

QUEENS PARK R.

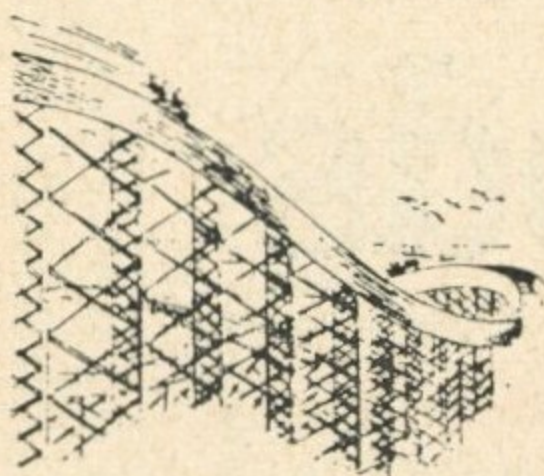
League Division 2

Saturday 6 March 1971

Kick-off 3 p.m.



*You're on top
of the world*



**10 a.m. TILL MIDNIGHT
OPEN DAILY AT
SOUTHSEA**

SAVE SIXPENCE
Buy your tickets from the Ticket Box,
Five 6d. tickets for 2/-
Accepted on all Rides.

**BRITAIN'S BRIGHTEST
AMUSEMENT PARK ON
THE SOUTH COAST**

specialists in all sports kit and equipment

EMBROIDERED BADGES

in wire or coloured silks

CLUB TIES

(any design) woven or printed motifs

HAND PAINTED WALL PLAQUES

any design to order 38/- each

Illustrated Brochure Free

Enquiries invited - no obligation



GREENBURGH BROS. LTD.

81-82 QUEEN STREET PORTSMOUTH

Telephone 26331