



# *Norwich City Football Club*

**Season 1970-71**



**Official Programme**  
including  
**Football League  
Review**

**1/-**

FOOTBALL LEAGUE (Division Two)

**NORWICH CITY**

v.

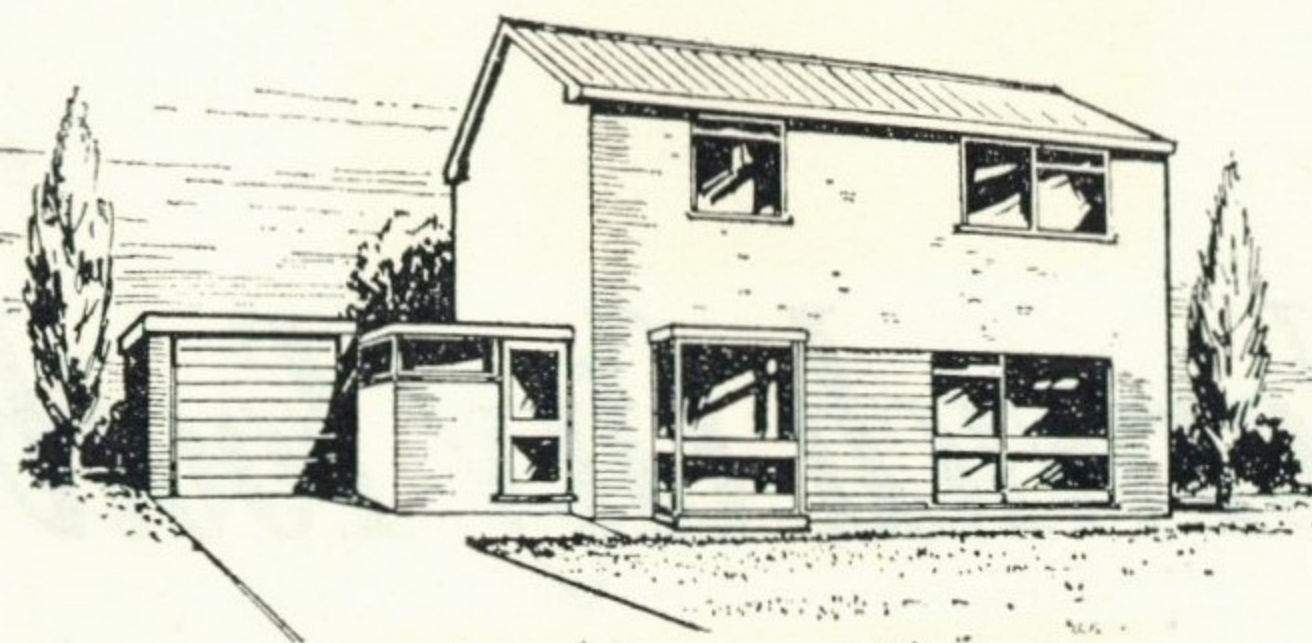
**LUTON TOWN**

Saturday, 19th December, 1970

Kick-off 3.0 p.m.



## MODERN HOUSES and Bungalows for Sale on several select coastal sites



**ROGERS**

BUILDERS

HUNSTANTON · NORFOLK  
Tel. HUNSTANTON 2426 & 2992

- 10 years NHBRC guarantee
- 95% Mortgages
- No Road Charges
- Freehold
- Architect Designed



**HEATRAE**

# The Great Name in WATER HEATING

HEATRAE LIMITED · NORWICH NOR 29A

## THOMAS TILLET LTD.

*Watchmakers, Jewellers and Silversmiths*

***Trophies for Sports and Pastimes a Speciality***

Medallists to—  
The Norfolk County Football Association  
Norwich Business Houses League  
Anglian Combination  
Norwich and District Junior Football League  
Norwich Minor League—and many others

CATALOGUES AVAILABLE

17 ST. GILES' STREET  
NORWICH, NOR 17E

Telephone: Norwich 25922

## NORWICH CITY FOOTBALL CLUB

F.A. CUP SEMI-FINALISTS, SEASON 1958-59

FOOTBALL LEAGUE CUP WINNERS, SEASON 1961-62

President: JAMES L. HANLY, J.P.

Vice-President: S. W. SPRINGALL

Directors:

GEOFFREY C. WATLING (Chairman)

K. H. HOWARD

H. ROBINSON, F.C.A.

W. M. YOUNG

G. F. B. FISH (Vice-Chairman)

ALDERMAN ARTHUR SOUTH, J.P.

Hon. Club Surgeon: NORMAN J. TOWNSLEY, F.R.C.S.

Manager: R. SAUNDERS

Ground: CARROW ROAD

Hon. Medical Officer: DR. A. WOOLSTONE

Secretary: A. E. WESTWOOD, J.P.

(Telephone: 21514)

## Carrow Road Notebook

### Seasonal Greetings

As this is the last League match before Christmas and the New Year we would like to take this opportunity of wishing all our supporters on behalf of the Board of Directors, Staff and Players a Very Happy Christmas and a most prosperous New Year.

in ten matches—gives some idea of the task facing the Canaries. On the other hand, we ourselves can point to a recent record of seven games without defeat, and last week's victory over Bristol City at Ashton Gate should have put Duncan Forbes and his men in the right mood to make today's game an entertaining Christmas attraction.

Formed in 1885, Luton turned professional five years later. They had three seasons in Division Two of the Football League from 1897, but then assumed Southern League status. By a coincidence it was in 1905, the year City entered the 'Southern', that the Hatters moved to their headquarters at Kenilworth Road.

For thousands of Norwich City supporters, mention of Luton Town revives poignant memories. Memories of 1959, when the Hatters ended our Cup hopes on the threshold of Wembley, beating us by the only goal in the semi-final replay at St. Andrew's after a drawn game at White Hart Lane. Ever since then fixtures with Luton have held special significance, though it is several years now since our clubs have both been in the same division.

Yet Luton, to whom we extend a warm welcome this afternoon, are among our oldest soccer acquaintances. They were our regular opponents in the old Southern League; the link between us was maintained in the Third Division of the Football League when it was formed, and we have also met several times at Second Division level, as well as in the F.A. Cup.

This is, in fact, the twenty-ninth time Luton have come to Norwich in search of points. Results of previous encounters have gone mainly in our favour, for we have won sixteen of them to Luton's five, the other seven being drawn. And the fact that not one of these twenty-eight games has ended goalless indicates that defences are likely to be kept busy this afternoon!

We could scarcely have wished for a more attractive fixture than today's for the start of the holiday programme. Promoted from the Third Division at the end of last season, Luton are making a determined bid to go one better this term, and before today's game were only a point behind the leaders, Leicester, with the best goal average in the section. They have one of the section's most exciting personalities in leading scorer Malcolm Macdonald, and their away record—four wins and four draws

Their 'purple patch' came from 1955 to 1960, when they were members of the First Division (and also reached Wembley, where they were beaten by Nottingham Forest) but then began a slide that saw them drift as far as the Fourth Division. The revival started in 1968-69, when they finished third in Division Four; a year later, as runners-up, they won their way back into the Second Division. Now their fans are hoping for a 'promotion hat-trick'.

It was from Luton, of course, that City signed Ron Davies. But the biggest fee the Hatters have received was the £100,000 that Aston Villa paid for Bruce Rioch. Luton's own biggest outgoing fee was £35,000 to Arsenal for David Court last summer. The Hatters' full League record reads:

1897-1900—Division Two.  
1920-1937—Division Three.  
1937-1955—Division Two.  
1955-1960—Division One.  
1960-1963—Division Two.  
1963-1965—Division Three.  
1965-1969—Division Four.  
1969-1970—Division Three.  
1970—Division Two.

Congratulations to the lads on extending their unbeaten run to seven games by collecting both points from their visit to Bristol City on Saturday last. The match was played in pouring rain, we adapted ourselves to the  
(continued on page 10)



Telephone - 33221 (3 lines)

'Grams : "ROADSTONE," NORWICH

## EDWARD J. EDWARDS

(NORWICH) LIMITED

*Public Works Contractors*

**NORWICH, NOR 44S**

★ **TARPAVING SPECIALISTS** ★

### SECOND DIVISION SURVEY

With half of the season's programme completed the Second Division table has assumed a reasonably settled pattern, and unless the second half of the term goes against tradition it is fairly certain that the promotion and relegation issues will involve the clubs at present situated at either end of the section.

Features of the first half have been the consistent form of Leicester and Luton, the rapid rise of Sheffield United and, at the foot of the division, the disappointing performances of Blackburn and Charlton.

A glance at the records after half-a-dozen matches had been played shows that Leicester and Luton had each lost twice. Since then they have both been beaten only once, and their current positions at the top of the section are fitting reward for their consistency. Sheffield United began disappointingly, but steady improvement during October and November saw them move steadily up the table to a position where they are now well among the promotion fancies. Charlton and Blackburn, on the other hand, have failed to recover from early setbacks, and with a three-point gap to close at the foot of the table face a testing time during the next few months. Early in the campaign there were fears, too, for clubs such as Queen's Park Rangers, Middlesbrough and Sunderland. All three have since found the form expected of them, though the points they dropped in those first few weeks may well have cost them the chance of figuring strongly in the promotion race.

Leicester must remain as Second Division title favourites, but their 3-0 defeat at Hull a fortnight ago must have shaken their confidence to some extent. Hull themselves are by no means out of the reckoning—they, too, have been remarkably consistent over the first-half of the programme—and Cardiff's 3-1 victory over Sunderland at Ninian Park last Saturday indicated that they have overcome the loss of free-scoring John Toshack. Leicester, Luton, Hull, Cardiff and Sheffield United began today's games within a four-point bracket, making fixtures between them of vital importance, while there is still plenty of time for the two clubs on the fringe—Carlisle and Norwich—to take advantage of any slips by the leading five.

If the pattern is reasonably settled, therefore, the programme between now and the end of the season holds considerable interest. It has been said in the past that the Christmas programme holds the key to end-of-season placings. The Second Division struggle this season could well prove an exception to the rule.

## HOME or AWAY



OUR CHRISTMAS HAMPERS ARE  
ALWAYS AN **ACCEPTABLE GIFT**

PRICED £2 to £10

BROCHURE OBTAINABLE FROM

**F. LAMBERT & SON LTD., BER ST., NORWICH**

**MOTOR INSURANCE**  
**YOUR BEST POLICY**  
CONSULT

## HEWLETT & SUMNER LTD

44 King Street

**NORWICH**

**The Brokers with over 20 Years Experience**

### LUTON PERSONALITIES



JIMMY RYAN



DAVID COURT

**A GOOD KICK-OFF !!**

SAVE REGULARLY WITH THE

## NORWICH BUILDING SOCIETY

**5½%**

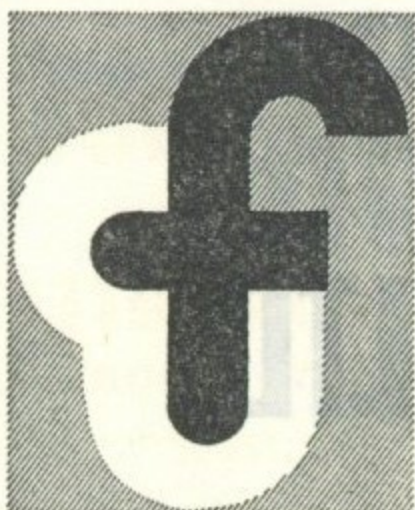
ST. ANDREW'S HOUSE, NORWICH,  
NOR 54A

TELEPHONE 21367

**5½%**

★ **REGULAR MONTHLY SAVINGS EARN INTEREST AT 5½% AND WE PAY THE INCOME TAX. A FIRST-CLASS MORTGAGE SERVICE IS ALSO AVAILABLE. SEND OR CALL FOR FULL DETAILS.**





## contract furnishers & upholsterers

anglia shopfitting co ltd  
59a heigham road  
norwich NOR 82G  
telephone 22858

### LUTON TOWN PEN PICTURES

**TONY READ.** At one time last season, he found it difficult to get a game in his correct position and had some outings in the reserves at inside-forward. When Alan Starling was injured Read was preferred to the former Scottish Under-23 international Sandy Davie, now with Southampton.

**JOHN RYAN.** A real bargain came the way of Luton twelve months ago when they picked up this talented player free from Fulham, despite the fact that he had had considerable first-team experience at Craven Cottage. He began the season in the side, lost his place temporarily, but fought his way back to make thirty-six League appearances.

**JACK BANNISTER.** Cost a fee of £8,000 from Crystal Palace about two years ago and was signed as a midfield player. However, he showed an aptitude for a place in the back four where he is neat and effective and missed only six games last season.

**ROGER HOY.** Another costly close season signing, he cost £20,000 from Crystal Palace and the details of the transfer were ironed out when both clubs were on tour in Southern Spain during May. Hoy, strong and forceful, began his career with Tottenham before moving to Selhurst Park and although his role for the Palace was mostly in midfield, Luton use him mainly in the back four.

**CHRIS NICHOLL.** After this twenty-two-year-old player had been instrumental in Halifax Town gaining a completely unexpected draw at Kenilworth Road last season, Luton went in with a big bid and, next day, the deal was completed at £30,000 which was then a record fee for the club. Yet Nicholl had had barely a season in League football, having gone to The Shay from the Cheshire County League club, Witton Albion.

**ALAN SLOUGH.** Is probably Luton's most valuable young asset because he has long been wanted by several First Division clubs. Slough has made it very clear, however, that he wants to continue to play for his home town club and, to that end, twelve months ago, asked for a long-term contract. This he was given, one of three years with the option of a further three. Missed only one match in the promotion drive last season.

**JIMMY RYAN.** Has proved a bargain for the fee which Luton paid Manchester United, with whom he could not secure a regular place because of competition for both wing positions. As a result, he became known as one of the best players in the Central League and he was most impressive when he played in all four matches for his new club during their tour of Spain.

## A. E. ROSS & SON LTD.

GLASS MERCHANTS AND GLAZIERS

Little Paddock Street, Norwich

Telephone 23615

Present . . .

### The ROSS DOUBLE GLAZING SYSTEM

elegantly designed for your home

★ Also Shelves, Tabletops, Silvering, Drilling, Bevelling, Polishing, Brilliant Cutting

Prompt WINDSCREEN REPLACEMENT SERVICE

A Good Clean Side!

## Swan

LAUNDRY  
NORWICH

Launderers and Dry Cleaners  
to Norwich City F.C.

## for good food

try . . .

### The OAKLANDS HOTEL

THORPE ST. ANDREW

in pleasant surroundings  
where car parking is  
no problem

Telephone NORWICH 34471

**DAVID COURT.** Most expensive ever signing by Luton, he cost £35,000 from Arsenal during the summer. In securing him, manager Stock showed a good deal of determination because he first began negotiations before last season's deadline, only to see them break down. Court, who is twenty-six, had spent all his playing career at Highbury and made fifty-five First Division appearances in the last two seasons.

**MALCOLM MACDONALD.** Wore a variety of numbers during last season, but was always to be found taking the shortest route to goal as his twenty-five successes in forty-seven League matches show. When Luton paid £17,500 for a nineteen-year-old who had been alternating between full-back and inside-forward for Fulham, there was some eye-raising. Original intention was to use him in defence, but this thinking was changed during pre-season matches when he showed his powers of opportunism.

**MIKE KEEN.** The club captain, who had ten years with Queen's Park Rangers, some of them under the present Luton manager, Alec Stock, before moving to Kenilworth Road. A fee of £18,500 was involved. During his spell with the Rangers he led them into the First Division and was skipper when they won the League Cup.

**DON GIVENS.** Last of four newcomers from Manchester United and he probably figured in the deal at a five figure fee. Born in Dublin, he followed the well trodden path to Old Trafford and, at twenty-one, is regarded as a very promising prospect.

**VIVIAN BUSBY.** Made a quite remarkable impact when he was brought into the team towards the end of last season, only weeks after having left the amateur ranks with Wycombe Wanderers. Rising twenty-one, he developed a fine understanding as a striker with Macdonald, and scored some vital goals.

### LAST SATURDAY'S TEAMS

**Football League, Bristol City 0, Norwich City 1:** Keelan, Payne, Black, Stringer, Forbes, Livermore, Briggs, Silvester, Howard, Paddon, Foggo; Sub: Anderson. Attendance 10,637.

**Norfolk Premier Cup—first round, Norwich City 'A' 3, Gorleston 2:** Cawston, Brown, Harmer, Fryer, Rollings, Goodwin, Grapes, Self, Cheesley, Sargent, Kerlin; Sub: Easthall.

## We are Specialists . . .

in the market of COPPER, BRASS, LEAD, ELECTRIC MOTORS,  
USED BATTERIES and all types of SCRAP METAL.

We offer BEST CASH PRICES and collection can be arranged  
if necessary.

**PERUZZI'S** SALVAGE & GENERAL MERCHANTS  
70-72 DERBY STREET, NORWICH Telephone 22894



Make Your Goal the  
**MUSTARD  
POT**



THORPE ROAD

(Within shooting distance of this Ground)  
where Ray & Liz Castle will make you welcome  
A WHITBREAD HOUSE

**FIAT**

Distributors

for Norfolk and Suffolk

FIAT EXPORT SELLING AGENTS TO U.S. PERSONNEL

**POINTER MOTOR COMPANY LTD.**

AYLSHAM ROAD

Telephone Norwich 45345

NORWICH

A MECCA LTD. COMPANY

**R. G. Pilch Ltd.**

SPORTS OUTFITTERS

EQUIPMENT, CLOTHING and  
FOOTWEAR FOR EVERY SPORT

★ *LISTS FREE*

1 BRIGG STREET, NORWICH

Telephone 28224

**THOMSON  
BROS.**

Non-Ferrous  
Metal and  
Scrap Iron  
and Steel  
Merchants

CITY STATION  
SIDINGS  
NORWICH

Telephone 23044



**HAULAGE CONTRACTORS**

Telephone Costessey 2926

(1) **Norwich City** (Yellow Shirts, Green Collar and Cuffs, Black Shorts)

(1) KEVIN  
KEELAN

(2) CLIVE  
PAYNE

(3) ALAN  
BLACK

(4) DAVID  
STRINGER

(5) DUNCAN  
FORBES

(6) MAX  
BRIGGS

(7) DOUG  
LIVERMORE

(8) PETER  
SILVESTER

(9) TREVOR  
HOWARD

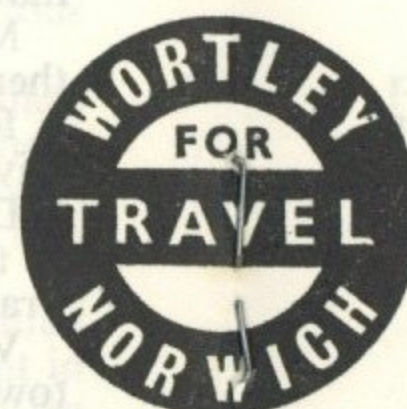
(10) GRAHAM  
PADDON

(11) KEN \*  
FOGGO

Substitute TERRY  
ANDERSON

Referee

Mr. R. Crabb  
(Exeter)



Linesmen

Mr. S. F. Lover

Red Flag

Mr. C. C. Smith

Yellow Flag

SUB : COOGEVE

(11) DON  
GIVENS

(10) MIKE  
KEEN

(9) MALCOLM \*  
MACDONALD

(8) DAVID  
COURT

(7) JIMMY  
RYAN

(6) ALAN  
SLOUGH

(5) CHRIS  
NICHOLL

(4) ROGER  
HOY COLLINS

(3) JACK  
BANNISTER

(2) JOHN  
RYAN

(1) TONY  
READ

Substitute JOHN COLLINS

(1) **Luton Town** (White Shirts, Black Shorts)

After the whistle—The Bell

**The Bell Hotel**

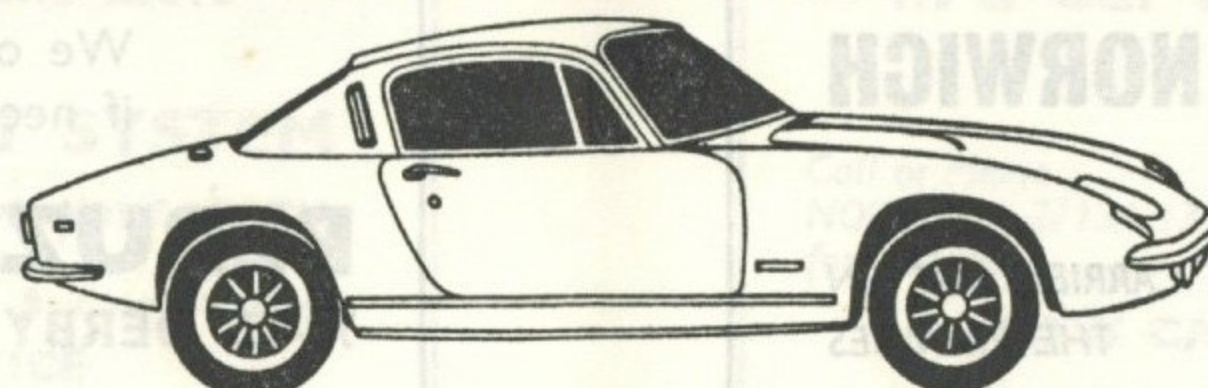
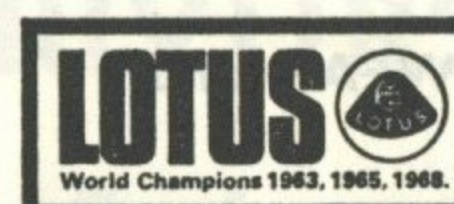
Orford Hill, Norwich

Phone 21256 for a table  
for dinner tonight

A TRUST HOUSE HOTEL



**LOTUS AT HOME**



Retail Sales Dept., Lotus Cars (Sales) Ltd., Norwich, NOR 92W. Tel: Wymondham 3411.

FULL REPORTS OF  
TODAY'S TOP MATCHES  
IN THE  
**PINK UN**  
EVERY SATURDAY 7d





## Meet the Canaries

### MERVYN CAWSTON

Although he has yet to make his Football League debut Mervyn Cawston has firmly established himself as City's reserve keeper following the transfer of Peter Vasper to Cambridge United. Mervyn, who comes from the Diss area, is one of several local youngsters who have joined the Canaries' full-time professional staff following service as apprentices. His potential was soon spotted at Carrow Road when he was selected as England's Under-15 goalkeeper, and he signed full-time forms in July, 1969.

### MAN IN THE MIDDLE

This afternoon our referee is Mr. Ronald Crabb from Exeter, who according to our records, is paying his first ever visit to Carrow Road. Mr. Crabb commenced refereeing in 1952 whilst serving with the Royal Marines. He was appointed to the Western League in 1964 and to the Football League linesman's list in 1967. He was promoted to the referee's list last season.

In 1955 he refereed a match between the Mediterranean Fleet and the Italian Army. He has also officiated in Devon Senior, Junior and Youth Finals.

Mr. Crabb, a prison officer, is married with two children, a boy and a girl. He is interested in carpentry and in the evenings gives instruction in sport and games, he is also a member of the Devon F.A. coaching panel for referees.

### SPORTS QUIZ

From which clubs did the following well-known Second Division players join their present colleagues?

1. Mike Kenning (Charlton).
2. Peter Noble (Swindon).
3. Mark Lazarus (Orient).
4. Joe Baker (Sunderland).
5. Ian McKechnie (Hull).
6. Tony Currie (Sheffield United).
7. Len Glover (Leicester).
8. Alan Warboys (Sheffield Wednesday).
9. Harry Cripps (Millwall).
10. Ray Pointer (Portsmouth).

(The answers will be found on page 11)

### NEXT AWAY LEAGUE MATCH

On Saturday next (Boxing Day), we visit Queen's Park Rangers, kick-off 3 p.m. Stand seats at 20s., 15s. and 10s. may be booked from: The Ticket Office, Queen's Park Rangers Football Club, Rangers Stadium, Shepherds Bush, London W.12, telephone: Box Office, 01-743-7478/9.

Mascot Coaches are running an excursion to this match, leaving Bell Avenue, Norwich, at 8 a.m. Return Fare 22s. Seats on the coach may be booked at Mascot Coaches, Castle Meadow, Norwich, telephone: Norwich 45888 or 24518. Trains will leave Norwich Thorpe at 9.40 a.m. arriving at Liverpool Street at 11.56 a.m. and 10.20 a.m. arriving London 12.58 p.m. Return trains from Liverpool Street at 5.30 p.m. and 7.30 p.m. second-class day return fare 50s. Please note the 6.30 p.m. train from Liverpool Street terminates at Ipswich on this day.

★ SPECIALISTS IN  
SADDLERY, RIDING WEAR and  
HORSE CLOTHING

**R. A. BAKER (Saddler) of NORWICH**

4 WATERLOO ROAD  
NORWICH

Telephone 49581

REPAIRS CARRIED OUT ON  
THE PREMISES

### SECOND DIVISION

Aug. 15	PORTSMOUTH	1—1
" 22	Luton Town	0—0
" 29	SHEFFIELD UNITED	1—0
Sept. 2	MILLWALL	1—0
" 5	Sunderland	1—2
" 12	CHARLTON ATHLETIC	2—0
" 19	Cardiff City	1—1
" 26	HULL CITY	0—2
" 30	Watford	0—2
Oct. 3	Oxford United	1—1
" 10	CARLISLE UNITED	1—1
" 17	Portsmouth	2—0
" 21	SWINDON TOWN	1—0
" 24	Blackburn Rovers	1—2
" 31	ORIENT	4—2
Nov. 7	Bolton Wanderers	1—0
" 14	SHEFFIELD WED.	0—0
" 21	(1) LEICESTER CITY	2—2
" 28	Birmingham City	2—2
Dec. 5	MIDDLESBROUGH	1—1
" 12	(2) Bristol City	1—0
" 19	LUTON TOWN	—
" 26	Queen's Park Rangers	—
Jan. 2	(3) F.A. Cup Wolverhampton	—
" 9	WATFORD	—
" 16	Swindon Town	—
" 23	(4) F.A. Cup	—
" 30	BIRMINGHAM CITY	—
Feb. 6	Middlesbrough	—
" 13	(5) BRISTOL CITY	—
" 20	Leicester City	—
" 27	Orient	—
Mar. 6	(6) BLACKBURN	—
" 13	Sheffield Wednesday	—
" 20	BOLTON WANDERERS	—
" 27	(S.F.) SUNDERLAND	—
April 3	Sheffield United	—
" 9	Charlton Athletic	—
" 10	QUEEN'S PARK R.	—
" 12	OXFORD UNITED	—
" 17	Carlisle United	—
" 24	CARDIFF CITY	—
" 26	Millwall	—
May 1	Hull City	—
" 8	F.A. Cup Final	—

### FOOTBALL LEAGUE CUP

Sept. 9	CHESTER	0—0
" 16	Chester (Replay)	2—1
Oct. 7	BRISTOL ROVERS	1—1
" 13	Bristol Rovers (Replay)	1—3

### FOOTBALL COMBINATION

Aug. 15	Reading	2—1
" 19	SWINDON TOWN	1—2
" 22	IPSWICH TOWN	1—1
" 29	Queen's Park Rangers	1—0
Sept. 2	Chelsea	1—0
" 5	WEST HAM UNITED	0—1
" 12	Arsenal	1—1
" 19	CARDIFF CITY	1—0
" 26	Oxford United	1—2
Oct. 3	READING	3—0
" 10	Bristol Rovers	3—2
" 14	Bournemouth	0—0
" 17	ARSENAL	1—4
" 24	CRYSTAL PALACE	0—5
" 27	Swansea City	1—0
" 31	Southampton	0—2
Nov. 7	TOTTENHAM	0—1
" 12	Bristol City	Postponed
" 14	Plymouth Argyle	2—2
" 28	GILLINGHAM	1—0
Dec. 5	Birmingham City	2—4
" 12	BOURNEMOUTH	Postponed
" 19	Ipswich Town	—
" 26	FULHAM	—
Jan. 9	Swindon Town	—
" 16	SWANSEA CITY	—
" 23	LEICESTER CITY	—
" 30	Gillingham	—
Feb. 6	BIRMINGHAM CITY	—
" 13	Leicester City	—
" 20	BRISTOL CITY	—
" 27	SOUTHAMPTON	—
Mar. 6	Crystal Palace	—
" 13	PLYMOUTH ARGYLE	—
" 20	Tottenham Hotspur	—
" 27	West Ham United	—
April 3	QUEEN'S PARK R.	—
" 10	Fulham	—
" 17	BRISTOL ROVERS	—
" 21	CHELSEA	—
May 1	OXFORD UNITED	—
" 5	Cardiff City	—

Fixtures Copyright by the Football League Ltd. (Season 1970/71) Fixtures in CAPITAL LETTERS are HOME FIXTURES

**'DRIVURSELF'** at lowest possible cost

— in a Car from **ROBINSONS**

RIVERSIDE ROAD, NORWICH

— OF COURSE

Call or Phone  
NORWICH 27134 (3 lines)  
for Details

NEW CARS — MOTOR CARAVANS — COMMERCIALS



# BUSH BUILDERS (Norwich) LTD.

## BUILDERS AND CONTRACTORS

ALL TYPES AND SIZES OF INDUSTRIAL DEVELOPMENT  
PRIVATE HOUSING DEVELOPMENT  
NORWICH AND COASTAL ESTATES

**Mile Cross Lane, Norwich, NOR 43N Tel. 46326**

### Continued from page 1

conditions better than the home side and thoroughly deserved our one-nil victory from a goal scored by Peter Silvester in the thirty-eighth minute. Ken Foggo had a goal disallowed and Kevin Keelan made several fine saves.

In a most entertaining game at Trowse the 'A' team were successful against Gorleston by the odd goal of five in the first round of the Norfolk Premier Cup. The side was virtually our Youth team and the young lads did well to beat a more experienced side who have been having some very good results in recent weeks. Our goals were scored by Glenn Self (two) and Stephen Grapes.

The Football Combination game, which was due to have been played at Carrow Road was postponed by Bournemouth as they were unable to raise a team due to injuries.

**F.A. CUP—THIRD ROUND—SATURDAY, 2nd JANUARY, 1971.** Wolverhampton Wanderers v. Norwich City (at Molineux Ground, kick-off 3 p.m.)

**TICKET ARRANGEMENTS.** SEASON TICKET HOLDERS ONLY may apply for one Stand ticket per reservation slip from 9.30 a.m. on Tuesday, 22nd December, 1970, until 5 p.m. on Thursday, 24th December, 1970, and again from 10 a.m. to 5.30 p.m. on Saturday, 26th December, 1970. Personal and postal applications entertained. Those applying by post are asked to kindly enclose a stamped, addressed envelope. Reservation Slip No. 1 must be produced. Admission prices 15s. and 14s. and tickets will be sold on the principle of first come, first served. In the event of any Stand tickets being available after the season ticket holders option expires a further announcement will be made. Please note that this is NOT an all ticket match and ground prices are: Enclosure (standing) 7s. (boys 4s.), Terrace 6s. (boys 3s.). Mascot Coaches are running excursions to this match, leaving Bell Avenue at 7 a.m., return fare 28s. Seats on the coach may be reserved at Mascot Coaches, Castle Meadow, Norwich, telephone: Norwich 45888 or 24518. British Railways are also running a Top Brass Excursion (£6 including two meals) and two second class excursion trains (£2). Times of departure and other information may be obtained from Thorpe Station, Norwich, telephone: Norwich 20255.

### PRE-MATCH ENTERTAINMENT

Today we have a welcome return of the Norwich Lads Club Band who will play popular selections, including carols before the game and again at half-time.

## JOBS! JOBS! JOBS!

OFFICE INDUSTRIAL  
TECHNICAL  
PERMANENT OR TEMPORARY

Available through

The

**East Anglian Staff Agency**

39 Exchange St. Norwich Tel. 27653

## ★ THE GRASS SEED FOR CARROW ROAD TURF

SUPPLIED BY

**Woods, Sadd, Moore  
& Co.**

Division of

**DALGETY FRANKLIN LIMITED**

GRASS SEED SPECIALISTS

Green Lane West, Rackheath  
Norwich, Nor 97A

TELEPHONE SALHOUSE 581

## LIST OF APPEARANCES, GOAL SCORERS AND LEAGUE TABLE

League, L. Cup and F.A. Cup Combination

	Apps.	Goals	Apps.	Goals
Anderson, T. ..	12	—	7	—
Bennett, A. ..	17	6	2	—
Black, A. ..	23	—	—	—
Briggs, M. ..	21	1	—	—
Brown, F. ..	—	—	10	—
Butler, G. ..	16	—	7	—
Cawston, M. ..	—	—	15	—
Darling, M. ..	3	—	17	6
Easthall, F. ..	—	—	3	1
Foggo, K. ..	19	6	2	1
Forbes, D. ..	25	—	—	—
Fryer, P. ..	—	—	2	—
Goodwin, S. ..	—	—	12	1
Govier, S. ..	—	—	20	1
Grapes, S. ..	—	—	16	2
Harmer, T. ..	—	—	8	—
Howard, T. ..	25	2	—	—
Howshall, G. ..	6	—	10	1
Keelan, K. ..	25	—	—	—
Kent, P. ..	—	—	10	—
Kerlin, P. ..	—	—	3	—
Livermore, D. ..	3	—	—	—
Mallender, K. ..	3	—	17	—
O'Donnell, N. ..	1	—	17	—
Paddon, G. ..	24	—	—	—
Payne, C. ..	12	—	6	—
Sargent, G. ..	—	—	9	2
Self, G. ..	5	2	13	7
Silvester, P. ..	22	10	—	—
Stringer, D. ..	22	1	—	—
Vasper, P. ..	—	—	5	—
Wilkinson, P. ..	—	—	13	—

## DIVISION II (Up to and including 12/12/70)

	P.	W.	D.	L.	F.	A.	Pt.
Leicester	21	13	5	3	37	18	31
Luton Town	21	12	6	3	37	15	30
Hull City	21	12	5	4	30	19	29
Cardiff City	21	10	7	4	33	19	27
Sheff. Utd.	21	9	9	3	38	24	27
Carlisle	21	8	9	4	33	24	25
Norwich	21	8	9	4	24	19	25
Middlesbro'	21	9	5	7	31	27	23
Oxford	21	9	5	7	25	26	23
Sunderland	21	9	4	8	29	24	22
Sheff. Wed.	22	8	5	9	26	34	21
Swindon	21	8	5	8	27	20	21
Millwall	21	8	4	9	25	23	20
Portsmouth	21	7	5	9	30	33	19
Q.P.R.	21	6	5	10	31	36	17
Birmingham	21	6	5	10	21	28	17
Bolton	22	6	4	12	23	32	16
Watford	21	4	8	9	21	33	16
Orient	21	3	10	8	14	30	16
Bristol City	21	5	5	11	24	37	15
Charlton	21	3	6	12	20	40	12
Blackburn	21	3	6	12	18	35	12

### QUIZ ANSWERS

1. Wolves; 2. Newcastle; 3. Crystal Palace;
4. Nottingham Forest; 5. Southend;
6. Watford; 7. Charlton; 8. Doncaster;
9. West Ham; 10. Coventry.

**SUPPORT YOUR CITY  
BY INVESTING IN**

# NORWICH CORPORATION BONDS

# 8 <sup>10</sup>/<sub>2</sub> %

FOR 3 TO 20 YEARS

- ★ Trustee Securities
- ★ No Expense to Lender
- ★ Interest Paid Every Six Months

**MINIMUM AMOUNT £200**

For conditions of issue and application forms, apply to the CITY TREASURER (Dept. 30)

CITY HALL, NORWICH, NOR 01A

Telephone: Norwich 22233 Ext. 278



# MASCOT CONTINENTAL

**Inclusive Tours DIRECT from NORWICH**

**GERMANY — FRANCE — BELGIUM — HOLLAND, Etc.**

FULL DETAILS FROM

TOP CLASS HOTELS

**MASCOT COACHES, 1 Castle Meadow, NORWICH**

**MASCOT SEAGULL, 59 Marine Parade, GT. YARMOUTH**

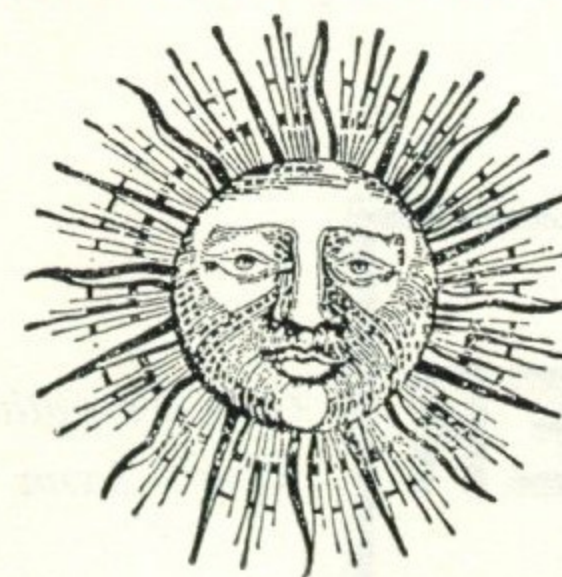
<b>A</b>	BURNLEY MANCHESTER CITY	<b>N</b>	BRISTOL CITY CHARLTON ATH.
<b>B</b>	CHELSEA WEST HAM	<b>O</b>	LEICESTER Q.P.R.
<b>C</b>	EVERTON LEEDS UNITED	<b>P</b>	MIDDLESBROUGH HULL CITY
<b>D</b>	HUDDERSFIELD LIVERPOOL	<b>Q</b>	MILLWALL CARDIFF CITY
<b>E</b>	MANCHESTER UTD. ARSENAL	<b>R</b>	ORIENT BLACKBURN
<b>F</b>	NEWCASTLE UTD. CRYSTAL PALACE	<b>S</b>	SHEFFIELD WED. OXFORD UTD.
<b>G</b>	NOTTINGHAM FOREST IPSWICH TOWN	<b>T</b>	SWINDON SHEFFIELD UTD.
<b>H</b>	SOUTHAMPTON COVENTRY CITY	<b>U</b>	WATFORD SUNDERLAND
<b>I</b>	STOKE CITY DERBY COUNTY	<b>V</b>	BARNSELY BRADFORD CITY
<b>J</b>	TOTTENHAM WOLVERHAMPTON	<b>W</b>	BRIGHTON MANSFIELD
<b>K</b>	WEST BROMWICH BLACKPOOL	<b>X</b>	CHESTERFIELD TRANMERE
<b>L</b>	BIRMINGHAM CARLISLE	<b>Y</b>	DONCASTER ROTHERHAM
<b>M</b>	BOLTON PORTSMOUTH	<b>Z</b>	GILLINGHAM BURY



**Tolly  
is different**

and we don't just mean the shape

Tolly is Different, Tollykeg, Tolly Export and Cobnut—the beers that satisfy—obtainable at the bars,  
Distributors: BARWELL & SONS, NORWICH



## TOWN HOUSE HOTEL

Thorpe St. Andrew Tel. Norwich 35212

**AA\*\* RAC\*\* Rosette for Good Food**

VISIT THE TOWN HOUSE RESTAURANT  
LUNCHES · TEAS · DINNERS

**À LA CARTE MENU**

FOR RESERVATIONS TELEPHONE NORWICH 35212



*see the goals on*

**MATCH  
OF THE  
WEEK**

*every Sunday*



**ANGLIA TELEVISION**



*Drayton 355  
(7 lines)*



*Gt. Yarmouth 63241  
King's Lynn 61131*

**R. G. CARTER LIMITED**  
**DRAYTON, NORWICH, NOR 52X**

*Subsidiary Companies*

*R. G. Carter (Gt. Yarmouth) Ltd., Hobland Hall, Bradwell, Gt. Yarmouth  
R. G. Carter (King's Lynn) Ltd., Littleport Street, King's Lynn*

**VISIT THE Great Wall  
Chinese Restaurant**

**Top of Prince of Wales Road, Norwich**

**Telephone 27402**



- ★ A daily business lunch costs 14/-, you pay only 6/- at The Great Wall
- ★ Book now, for your Party or just a table for two
- ★ Large or small Parties can be arranged at your own home
- ★ Meals to take home, or delivered

**FOR RESERVATIONS PLEASE RING 27402**

長城飯店