



the
Hornet
express

OFFICIAL PROGRAMME 1/- 5p

FOOTBALL LEAGUE DIVISION TWO

Saturday, 12th December, 1970

LUTON TOWN

Kick-off 3 p.m.



**W
A
T
F
O
R
D
F.C.**

BE LIKE WATFORD F.C. . . .

Get your Sports Equipment from the Specialists . . .

PETER SPIVEY LTD.

83A The Parade, Watford. Tel. 26550

and at

71 Marlowes, Hemel Hempstead. Tel. 56760

E. E. BEAUMONT & SON

(Established 1763)

Motor Body Repair Specialists

27 HIGH STREET, PINNER, MIDDLESEX

Telephone: 01-866 0730

REPAIRS LUBRICATION PETROL ACCESSORIES

For quick, economical repairs and personal service
call and see Eric at

VICARAGE ROAD SERVICE STATION

Adjacent to the Ground

WATFORD 31968

BRIDGEWATER FOR GLASS

all types of glass cut while you wait

SAFETY GLASS • TABLE TOPS • CURVED SCREENS • LEADED LIGHTS
MIRRORS • MIRRORS RE-SILVERED

46 VICARAGE ROAD WATFORD Tel: 36162/20339/43096

Tel. WATFORD 25107

CROXLEY BUILDING SUPPLIES LTD.

Builders Merchants

MET. & L.N.E. STATION, CROXLEY GREEN, HERTS

Bricks, Cement, Lime, Plasters, Dampcourse,
Tiles, etc. — Concrete Spurs, Coal Bunkers,
Paving Slabs — Roofing Felt, Snowcem, etc.

SUPPLIED IN ANY QUANTITY

Showrooms adjoining Met. Station
(Kitchen Units, Sanitary Ware, Paints, etc.)

RICKMANSWORTH 75887

The Second Division Scene

WATFORD LOSE UNWANTED RECORD

By Tony Pullein

Though we were beaten at Hillsborough last Saturday, events in the Second Division relieved us of a much unwanted record. Until then our 0-5 defeat at Portsmouth earlier in the season had stood as the heaviest reverse in Division Two this season. But Pompey themselves were the victims last Saturday when they crashed 0-6 at Carlisle, Bob Hatton cracking four of the home team's goals.

Unhappiest man in Division Two last week was undoubtedly Charlton's Peter Reeves who conceded his second own-goal of the season at a most vital moment. Charlton, fresh from two successive victories, met Blackburn Rovers in a tense bottom-of-the-table game. Charlton were leading 2-1 when Reeves made his error and Blackburn went on to win 4-2. In 1958 these two met in another game that decided their destinies on the last day of the season. Whichever side won would ensure promotion to Division One. Blackburn won that one, too, by 4-3—and went up. In four subsequent visits to The Valley, Blackburn had not even managed to score a goal.

Luton, today's visitors, ended Sheffield United's long run of 16 League games without defeat to close the gap between them and leaders Leicester to one point, thanks to the efforts of Hull City who inflicted Leicester's biggest defeat of the season (3-0) and halted their run of 14 League games without a loss.

Birmingham became the first visiting team to score at Millwall in seven matches but the Lions continued their run of home success—their 2-1 triumph was their sixth consecutive home League victory.

Oxford's new striker Nigel Cassidy scored his first goal for the club to give them their first-ever victory over Cardiff City. Mick Leach (Queen's Park Rangers) scored for the third game running, only the second time in his career he has achieved that. But Rangers were well beaten 1-3 at Sunderland. A late goal from Bristol City's Gerry Sharpe thwarted Orient's efforts to end a run of 10 games without a win just as it seemed the two points were theirs.

WHAT'S WHAT IN DIVISION II

Aggregate attendance: 3,327,410 (average 15,125).

Highest attendance: 39,983, Sheffield United v. Sheffield Wednesday (Oct. 3).

Lowest attendance: 5,266, Millwall v. Sheffield United (September 14).

Best supported club: Leicester City (average 24,469).

Worst supported club: Blackburn (average 7,882).

Top scorers: Macdonald (Luton) 16, Hickton (Middlesbrough) 13, Chilton (Hull) 12, Baker (Sunderland) 9, Clark (Cardiff) 9, Hatton (Carlisle) 9, Silvester (Norwich) 9.

Top own-goal scorer: Reeves (Charlton) 2.

Leading hat-trickster: Trebilcock (Portsmouth) 2.

Longest run without home win: Orient 7.

Longest run without away win: Carlisle 17.

Longest run since last home defeat: Sheffield United and Swindon 11.

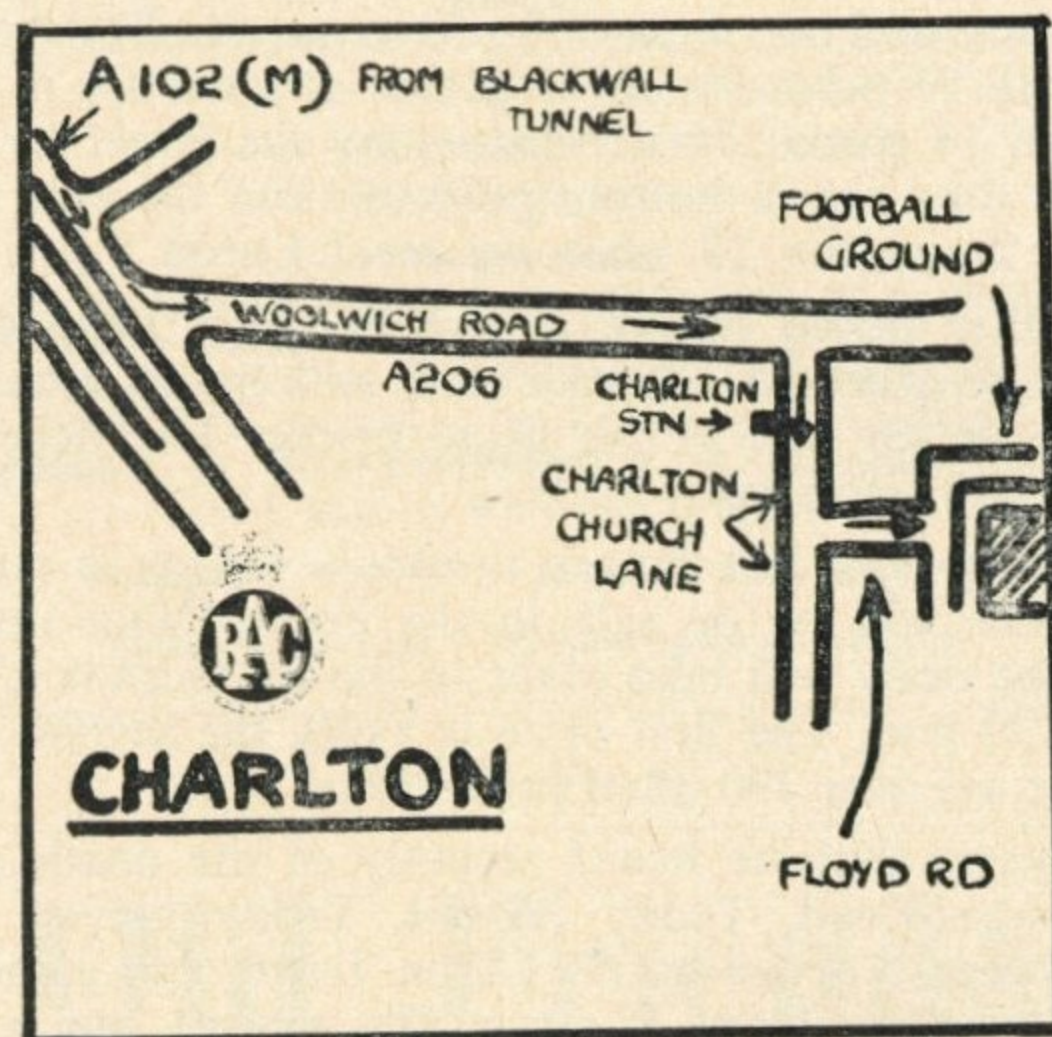
Longest run since last away defeat: Luton 6.

Biggest victories: HOME—Carlisle 6, Portsmouth 0 (December 5).

AWAY—Portsmouth 1, Sheffield United 5 (September 30).
Sheffield Wednesday 1, Luton 5 (October 10).
Bristol City 0, Oxford United 4 (October 10).

(N.B. Figures are for League games only, up to and including Saturday, December 5, 1970.)

Away Travel from Watford



TO CHARLTON

Join M1 and continue to southern end where follow signs "London (City) A1." North Circular Road 13 miles. Turn left and pass Henlys Corner continuing along A406. Follow to: A11 Woodford 24 miles. Turn right and follow to: Leytonstone 26 miles. Stratford 28 miles. Then at 1 mile on, at "Bow Bridge" Flyover, follow signs "Blackwall Tunnel" along A102. Continue through tunnel then at end follow signs A102 (M) Folkestone and Dover then 1 mile farther bear left following signs "A206 Woolwich" into Woolwich Road. CHARLTON ATHLETIC FOOTBALL GROUND 32 miles. (See Plan.)

EARN £££'s

by selling our goods to your workmates, etc.
WATFORD'S NEWEST CASH 'N' CARRY

Lighters, Radios, Watches, Toys, Toiletries, Clothing, etc., etc.
M. & R. BOWMAN, 30 Aldenham Road, Watford. Tel. 23472
200yds. from Bushey & Oxhey Station

You are looking for the best "ON THE FIELD"
—so only look for the best "OFF THE FIELD"

Prompt and free delivery of TIMBER, etc.

W. H. LAVERS & SONS LTD.

TIMBER AND BUILDING MATERIAL MERCHANTS
MERTON ROAD, WATFORD

Telephone 25292

and at 304 St. Albans Road

Also Hemel Hempstead and St. Albans

F. W. WITHEY LIMITED

1a Strangeways, Watford

BUILDERS AND DECORATORS

Yard and Works:
Copewood Road, Watford

ALTERATIONS A SPECIALITY

Estimates Free

Tel. 25781

For quick, efficient Service
on your way to and from the
match today

DAVIES

CAVENHAM FOODS LTD.

91-93 Vicarage Road
Watford

Telephone WATFORD 31271

Newsagent — Tobacconist —
Confectioners — Stationers
Ice Cream — Toys

NEWSAGENT TO THE CLUB

DR. MARTEN'S from 75/-

FELL BOOTS from 20/-

Latest London Fashions — Loofers and Wingtips from 95/-

All Tuf and Gluv shoes reduced

TOP FOOTWEAR FOR MEN

147 HIGH STREET, WATFORD
and 18 LONDON ROAD, ST. ALBANS

TELEPHONE WATFORD 22648

E. N. MOLE & CO. LTD.

Plumbers and Heating Engineers

Decorators and Paperhangers

3 TOLPITS LANE, WATFORD

Repairs of all kinds — Estimates free

Space to let—

Apply

Club Secretary

PLAY SAFE—BUY THAT BIKE FROM THE PEOPLE WHO KNOW THE GAME

THIRTEENS CYCLE DEPOT LTD.

73 CHALK HILL, OXHEY, WATFORD, HERTS

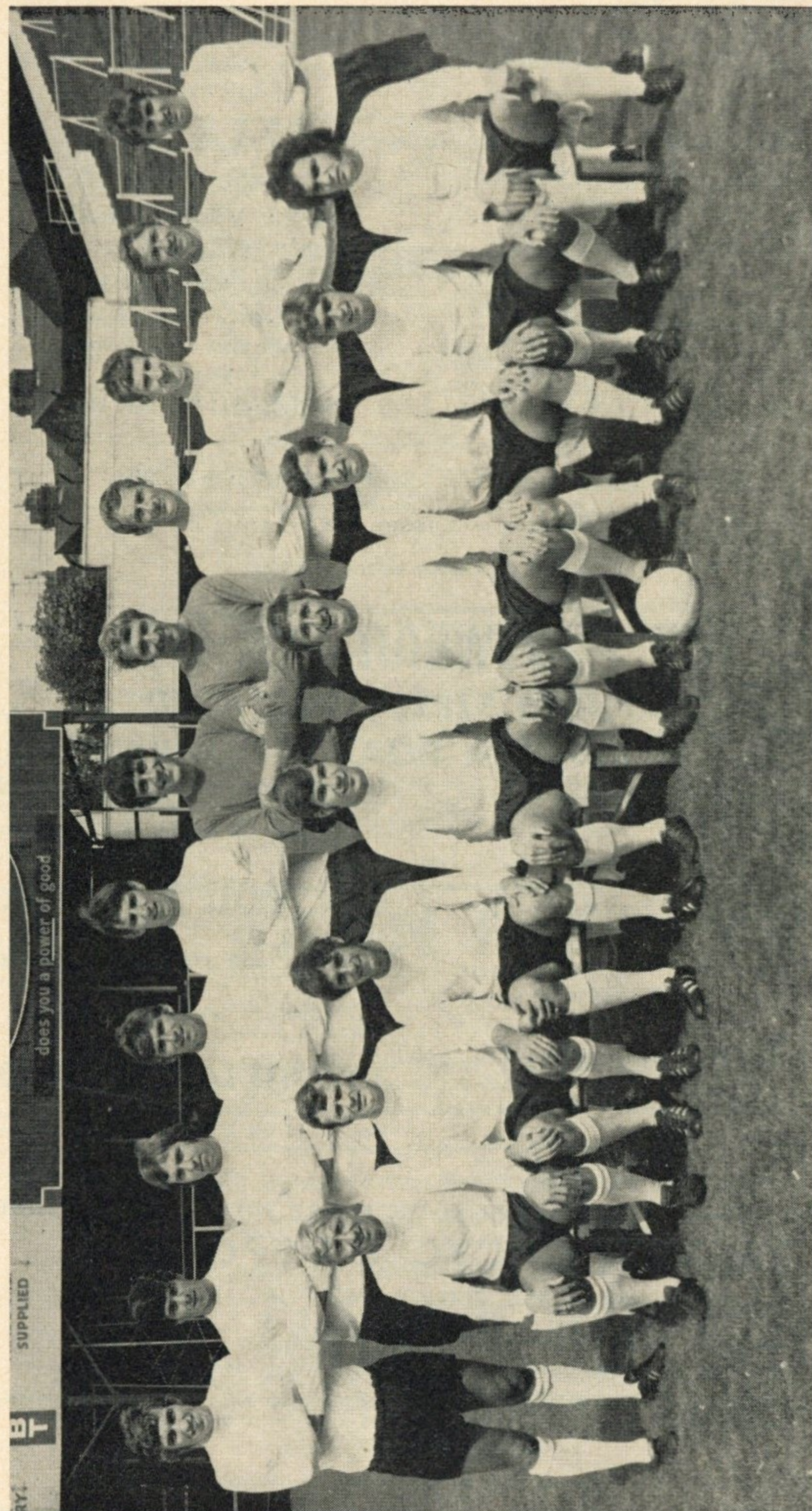
Telephone Watford 34221

THE BICYCLE PEOPLE WITH ALL THE CURRENT MAKES OF BIKES

RALEIGH GROUP : HOLDSWORTH AND CLAUD BUTLER : DAWES : GILLOTT : VIKING
FALCON GNATS : AND FOR JUNIOR—DAWES GNAT AND PAVEMASTER RANGE

All Accessories : Tubs (all weights)

OFFICIAL C.T.C. REPAIRERS : Active member National Association of Cycle Traders



Back row, Roger Hoy, Jack Bannister, David Court, John Ryan, Chris Nicholl, Alan Starling, Tony Read, Terry Branton (now Lincoln City), John Moore, Freddie Jardine, Alan Slough. Front row, John Collins, Matt Tees, Don Givens, Malcolm Macdonald, Mike Keen, Peter Phillips, Viv Busby, Graham French.

Picture—'The Luton News'

Welcome to our Visitors LUTON TOWN

Tony Read (goalkeeper). At one time last season he found it difficult to get a game in his correct position and had some outings in the Reserves at inside-forward. When Starling was injured, Read was preferred to the former Scottish under-23 International Sandy Davie, now with Southampton.

John Ryan (right back). A real bargain came the way of Luton 12 months ago when they picked up this talented player free from Fulham, despite the fact that he had had considerable first team experience at Craven Cottage. He began the season in the side, lost his place temporarily, but fought his way back to make 36 League appearances.

Jack Bannister (left back). Cost a fee of £8,000 from Crystal Palace about two years ago and was signed as a midfield player. However, he showed an aptitude for a place in the back four where he is neat and effective and missed only six games last season.

Mike Keen (wing half). The club captain who had 10 years with Q.P.R., some of them under the present Luton manager, Alec Stock, before moving to Kenilworth Road. A fee of £18,500 was involved. During his spell with the Rangers he led them into the first division and was skipper when they won the League Cup.

David Court (wing half). Most expensive ever signing by Luton, he cost £35,000 from Arsenal during the summer. In securing him, Manager Stock showed a good deal of determination because he first began negotiations before last season's deadline, only to see them break down. Court, who is 26, has spent all his playing career at Highbury and made 55 First Division appearances in the last two seasons.

Roger Hoy (wing half). Another costly close season signing, he cost £20,000 from Crystal Palace and the details of the transfer were ironed out when both clubs were on tour in Southern Spain during May. Hoy, strong and forceful, began his career with Tottenham before moving to Selhurst Park and although his role for the Palace has been mostly in midfield, Luton may use him in the back four.

Alan Slough (wing half). Is probably Luton's most valuable, young asset because he has long been wanted by several First Division clubs. However, Slough has made it very clear that he wants to continue to play for his home town club and, to that end, 12 months ago, asked for a long-term contract. This he was given, one of three years with the option of a further three.

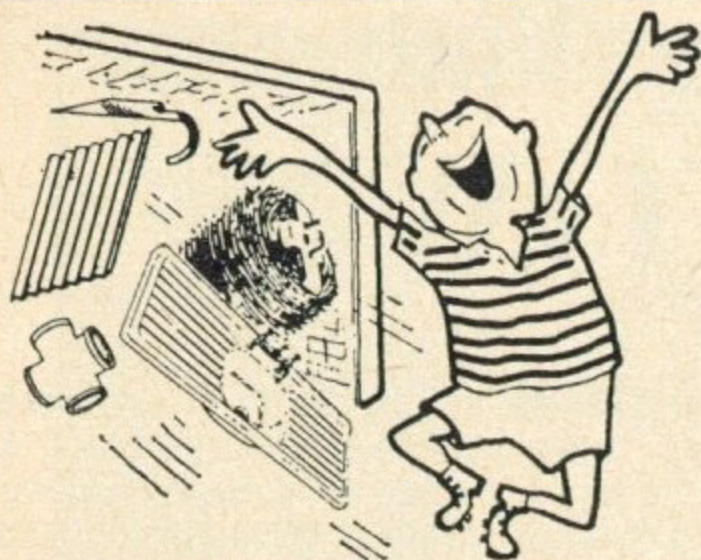
Chris Nicholl (centre-half). After this 22-year-old 6ft. 2in. tall player had been instrumental in Halifax Town gaining a completely unexpected draw at Kenilworth Road last season, Luton went in with a big bid and, next day, the deal was completed at £30,000 which was then a record fee for the club.

Malcolm Macdonald (centre-forward). Wore a variety of numbers during last season, but was always to be found taking the shortest route to goal as his 25 successes in 47 League matches show. When Luton paid £17,500 for a 19-year-old who had been alternating between full back and inside forward for Fulham, there was some eye-raising. Was with Tonbridge before he went to Fulham.

Jimmy Ryan (outside right). Almost certainly cost the greater part of the £35,000 which Luton paid Manchester United with whom he could not secure a regular place because of competition for both wing positions. As a result, he became known as one of the best players in the Central League and he was most impressive when he played in all four matches for his new club during their tour of Spain.

Vivian Busby (inside right). Made a quite remarkable impact when he was brought into the team towards the end of last season, only weeks after having left the amateur ranks with Wycombe Wanderers. Rising 21, he developed a fine understanding as a striker with top marksman, Malcolm Macdonald, and scored some vital goals.

Don Givens (centre-forward). Last of the four newcomers from Manchester United and he probably figured in the deal at a five figure fee. He has already been recognised by the Eire selectors and went with the National team on their summer tour.



You score every time
when you get your building supplies from

PRATT (WATFORD) LTD

Head Office:—

Star House • 69/71 Clarendon Road • Watford

Tel: 26411 Telex 935571

GARSTON 74727

JAMES COMPTON

ELECTRICAL ENGINEER AND CONTRACTOR

149 MOUNT PLEASANT LANE

BRICKET WOOD

Cape Universal

Building Material Manufacturers

Cape Universal Building Products Ltd.,
Exchange Road, Watford, WD1 7EQ.

A member of the Cape Asbestos Group of Companies.

Telephone WATFORD 25625

WEBB'S SPARE PARTS (Watford) LIMITED

Specialists in old cars from 1932 on

Tyres, Batteries, Battery Chargers, Heaters, etc., on Terms

Call, write or 'phone for details. General Engine and Chassis Spares

36 VICARAGE ROAD, WATFORD, HERTS

WATFORD CIVIC THEATRE TRUST LTD.

PALACE THEATRE

DECEMBER 22nd, 1970 to JANUARY 16th, 1971

MOTHER GOOSE

A GRAND FAMILY PANTOMIME

PERFORMANCES:

TUESDAY, DECEMBER 22, 7.30 p.m.

WEDNESDAY, DECEMBER 23, 2.30 p.m. and 5.30 p.m.

THURSDAY, DECEMBER 24, 2.30 p.m.

SATURDAY, DECEMBER 26, 2.00 p.m., 5.00 p.m., 8.00 p.m.

For further details see Watford Observer

OFF-THE-CUFF *by Harry Hornet*

Bournemouth Manager John Bond, who wore the West Ham strip with distinction in the back line, is leading the Fourth Division club in a determined bid for Third Division status next season.

He has a much-coveted goal-grabber in Ted McDougall, whose six goals in the 8-1 win over non-leaguers Oxford City hauled his total goals bag this season to 25 and put him way ahead of the other leading marksmen, Martin Chivers (Spurs), Malcolm Macdonald (Luton) and Gerry Ingram (Preston). One of the chief reasons for McDougall's exciting marksmanship is, according to Bond, "because he hates goalkeepers." And, just to boost the angry fire of the former Liverpool player, Bond claims that his star player is just the sort for Scotland to use against England at Wembley this season. Says Bond: "He has a simple philosophy, he hates Englishmen!" Inverness Highlander McDougall, 5ft. 10in. of aggressive muscle and pace, must, however, like living with those damned Sassenachs.

He came south at the age of 13. Today he is 10 years older and bears the burden of being Bournemouth's most expensive capture. He cost them a record £9,000 when joining them from York City a couple of seasons back.

McDougall not only gets angry with goalkeepers and Englishmen, he also gets angry with himself if things are not going right. That is if we believe the voluble Bond, who would make the ideal publicity bloke to extol the charms of a horror film.

I find McDougall a very friendly type. He has an accent which must be unique in soccerdom—a mixture of the Highland lilt, Liverpool twang and the drawl of a Bournemouth resident of many years.

Today, all the McDougall "hate" will be directed at little Yeovil Town in the F.A. Cup at the Dean Court ground.

One-time idols of Italian soccer, Fiorentina, have slumped badly since their exit at the feet of Celtic from last season's European Cup. Their meagre total of five points from seven league games this season has incurred the anger of chairman Nello Baglioni, who has accused the team of not trying and slapped on fines totalling £2,466.

Some four years ago life was one whirl of success for the twin-wingers of Queen's Park Rangers, Roger and Ian Morgan. They had celebrated the 3-2 victory over West Bromwich Albion in the first Football League Cup Final to be played at Wembley, and had zoomed from the Third to the First Division with rampant Rangers. An "own goal" by a Villa defender put them into Division 1. But the sun of yesteryear has dipped behind the heavy clouds for the Morgan boys. Roger went to Spurs for the staggering fee of £100,000, the biggest cash deal made by Rangers. Ian kept his first-team place for a time. Then things turned sour. Roger is now out for the rest of the season following a cartilage operation and twin Ian makes only fleeting first-team appearances for Rangers.

Since that "own goal" by Villa that sent Rangers into Division 1, the Midlands club has been through the mill. Today, as the Morgan boys and Rangers slip out of the fierce spotlight, Villa chase promotion to the Second Division. Show business is not the only place where it's tough at the top.

Last kick. . . . Alec Stock was the architect behind Rangers' wonder run of success. This afternoon he brings our old enemy, Luton Town, to Watford seeking both League points to keep in the promotion race.

Next Matches at Vicarage Road

Saturday, December 19th, 1970

SUNDERLAND

FOOTBALL LEAGUE DIVISION TWO

Kick-off 3 p.m.

Wednesday, December 23rd, 1970

LUTON TOWN

LONDON MID-WEEK LEAGUE

Kick-off 7.30 p.m.

WATFORD POOLS AND DEVELOPMENT ASSOCIATION

£750

WEEKLY IN PRIZES

DAILY LUCKY NUMBERS – 3 HIGHEST SCORES

ADDITIONAL MONTHLY GIFTS

WHY NOT JOIN OUR BAND OF AGENTS

Apply for Agency – Pools Office

GOLDEN GOAL COMPETITION:

1st prize £20 for ticket with correct time of 1st goal scored

Tickets available from the sellers, 1s. each.



Roy Sinclair powers a header goalwards against Bolton.

Graphic Photo

All sportsmen score by shopping at

GADE HOUSE
14 HIGH ST. WATFORD

MENSWEAR TAILORING SPORTSWEAR

LCS

LONDON CO-OPERATIVE SOCIETY
WATFORD 22371

**LYNWOOD JOINERY
WORKS LTD.**

For JOINERY and
BUILDER'S PLANT

Office and Works:

L.M.S. Goods Yard, Croxley Green

Stockists of all standard doors

Tel. WATFORD 32152/41659

Interesting work in all departments in
pleasant surroundings at

**WATFORD ELECTRIC
CO. LTD.**

(Whippendell Road)

Call and see us, or telephone

WATFORD 28201

So many good things at



CLOSED MONDAYS

**OPEN ALL DAY
EVERY WEDNESDAY**

Open until 8 p.m. every Friday

CLEMENTS ● THE PARADE, WATFORD ● TEL. 44222

WATFORD FIXTURES 1970-71

Football League Division II

© Copyright of the Football League

Aug., 1970	Opponents	Venue	Result	Goalscorers	League Position	Attendance
Sat. 15	BLACKBURN ROVERS	HOME	W 2-1	Walley 2	—	15,589
Sat. 22	Sunderland	Away	D 3-3	Walley, Wigg, Lees	8	16,228
Sat. 29	HULL CITY	HOME	L 1-2	Woods	14	17,034
Sept.						
Tues. 1	Swindon Town	Away	D 1-1	Wigg	14	16,392
Sat. 5	Queens Park Rangers	Away	D 1-1	Wigg	14	18,656
Sat. 12	CARLISLE UNITED	HOME	D 0-0		14	10,462
Sat. 19	Oxford United	Away	L 1-2	Wigg	18	13,270
Sat. 26	SHEFFIELD UNITED	HOME	D 0-0		18	15,891
Wed. 30	NORWICH CITY	HOME	W 2-0	Wigg, Eddy	10	14,163
Oct.						
Sat. 3	Portsmouth	Away	L 0-5		17	15,712
Sat. 10	CARDIFF CITY	HOME	L 0-1		17	16,244
Sat. 17	Blackburn Rovers	Away	W 3-2	Welbourne, Wigg 2	14	7,531
Mon. 19	Millwall	Away	L 0-3		14	11,988
Sat. 24	BIRMINGHAM CITY	HOME	W 2-1	Woods, Eddy	14	14,707
Sat. 31	Middlesbrough	Away	D 2-2	Scullion 2	13	16,018
Nov.						
Sat. 7	LEICESTER CITY	HOME	L 0-1		16	17,107
Sat. 14	Bristol City	Away	L 0-3		17	11,100
Sat. 21	Orient (1)	Away	D 1-1	Wigg	17	8,979
Sat. 28	BOLTON WANDERERS	HOME	D 1-1	Walley	17	12,020
Dec.						
Sat. 5	Sheffield Wednesday	Away	L 1-2	Garbett	17	12,139
Sat. 12	LUTON TOWN (2)	HOME				
Sat. 19	SUNDERLAND	HOME				
Sat. 26	Charlton Athletic	Away				
Jan., 1971						
Sat. 9	Norwich City	Away				
Sat. 16	MILLWALL	HOME				
Sat. 30	Bolton Wanderers	Away				
Feb.						
Sat. 6	SHEFFIELD WED.	HOME				
Sat. 13	Luton Town	Away				
Sat. 20	ORIENT	HOME				
Fri. 26	MIDDLESBROUGH	HOME				
Mar.						
Sat. 6	Birmingham City	Away				
Sat. 13	BRISTOL CITY	HOME				
Sat. 20	Leicester City	Away				
Sat. 27	Q.P.R.	HOME				
April						
Sat. 3	Hull City	Away				
Fri. 9	PORTSMOUTH	HOME				
Sat. 10	CHARLTON ATHLETIC	HOME				
Tues. 13	Carlisle United	Away				
Sat. 17	Cardiff City	Away				
Sat. 24	OXFORD UNITED	HOME				
Wed. 28	SWINDON TOWN	HOME				
May						
Sat. 1	Sheffield United	Away				

Football League Cup

Aug., 1970	Wed. 19	PETERBOROUGH UTD.	HOME	W 2-0	Woods, Wigg	9,757
Sept.	Tues. 8	Swindon Town	Away	L 2-4	Scullion, Wigg	13,271

F.A. Cup

Jan., 1971	Sat. 2	Round 3		
	Sat. 23	Round 4		
Feb.	Sat. 13	Round 5		
Mar.	Sat. 6	Round 6		
	Sat. 27	Semi-Final		
May	Sat. 8	Final		

TODAY'S OFFICIALS

Danny Lyden comes from Birmingham and started refereeing in 1954, progressing to the Football League Line via the Birmingham Works A.F.A. and the West Midland Regional League in 1961. He became a Football League Referee in 1963. Some of the more important matches he has officiated in are the Wales v. Scotland Youth International in 1963, the Amateur Cup Final in 1970. He also officiated in the Anglo-Italian Tournament in 1970. He is very interested in all types of youth work and enjoys listening to good music, either on records or at concerts. He was elected President of the Birmingham Boys Football League in 1959. Mr. Lyden also played amateur football as a goalkeeper with Bradford City and York Amateur F.C., and he was capped eight times by the West Riding County F.A.

Mr. Harry Powell lives at Stourport-on-Severn and started refereeing in 1956/57. He was promoted to the Football League Line after serving the West Midlands Regional League and last season was promoted to the new Supplementary List of Referees for the Football League.

David Harwood lives at Nottingham and made his way to the Football League Linesmen's List by way of local amateur football in the Nottingham area, the East Midlands Regional League and the Football Combination. This is his third year as a linesman on the League List. He is very interested in the administrative side of football, being the Referees Secretary of the East Midlands (Regional) League and Central Alliance Football League, and he is treasurer of the Nottinghamshire Society of Referees. He was a linesman in the quarter-final of the F.A. Cup-tie Manchester United v. Everton, but says his biggest thrill was when he had to take over as referee in the top First Division match Leeds United v. Manchester City on November 28 when the referee was injured.

LIST OF BALL DONORS

15. 8.70	BLACKBURN ROVERS	L. Godall, Esq., Vice-President Watford F.C.
19. 8.70	PETERBOROUGH UNITED	"Almaron"
29. 8.70	HULL CITY	Ten Per Centers, from Tring.
12. 9.70	CARLISLE UNITED	Green Shield Stamp Trading Co. of Watford.
26. 9.70	SHEFFIELD UNITED	R. G. Phillips, Esq., of South Harrow.
30. 9.70	NORWICH CITY	Mrs. S. A. Lepard of Harrow.
10.10.70	CARDIFF CITY	Sports Club of Rolls-Royce Ltd.
24.10.70	BIRMINGHAM CITY	J. D. Morgan, Esq., Vice-President, W.F.C.
7.11.70	LEICESTER CITY	Godfrey Davis (St. Albans) Ltd.
28.11.70	BOLTON WANDERERS	Mr. and Mrs. R. W. Sampson
12.12.70	LUTON TOWN	George and Roberts (Rickmansworth) Ltd.

see today's

EVENING

echo

for full details of

'Cross the Ball'



Big Cash prizes in a local competition

IT'S A WINNER!

JOHN F. COLMAN

BESPOKE TAILOR

Wedding orders a speciality
Has now moved to larger premises
80 High Street, Watford
First Floor—over Rymans Stationers
(opposite Cawdells Store)
Tel. Watford 25700

Specialists in
Made-to-Measure Clothes
High-grade Cloths—
Best and Latest Designs
And
Tailored Alterations and
Repairs
Dress-wear Hire
Valet Service

VALES PLANT REGISTER LIMITED

YOUR LOCAL PLANT HIRER

for all types of plant and equipment or for those
special erection, installation and dismantling jobs, consult the experts

Call, write or telephone: Tolpits Lane, Watford, Herts

Tel: Rickmansworth 76688, 77705 and 77907

LAST WEEK'S MATCHES

Sat., Dec. 5. **Football League. Sheffield Wednesday (away). Lost 2-1.**
Walker, Butler, Packer, Garbett, Lees, Eddy, Scullion,
Wigg, Sinclair, Walley, Woods. Scorer: Garbett.

**South-East Counties League. Queens Park Rangers
(home). Lost 1-2.**—Basri, Margerrison, Payne, Walsh,
Dean, Talbot, Hayes, Owen, Griggs, White, Pegg.
Scorer: White.

HALF-TIME SCORE INDICATOR

White number on black background

Gold number on black background

A Arsenal v. Wolves	A Bristol City v. Norwich
B Blackpool v. Coventry	B Cardiff v. Sunderland
C Crystal Palace v. Derby Co.	C Leicester v. Millwall
D Everton v. Southampton	D Middlesbrough v. Bolton
E Leeds v. Ipswich	E Portsmouth v. Oxford U.
F Manchester U. v. Manchester C.	F Q.P.R. v. Carlisle
G Newcastle v. Huddersfield	G Sheffield United v. Charlton
H Nottingham Forest v. Chelsea	H Swindon v. Orient
I West Brom. v. Tottenham	I Halifax v. Doncaster
J West Ham v. Liverpool	J Exeter v. Southport
K Birmingham v. Sheffield Wed.	K Aldershot v. Bristol Rovers
L Blackburn v. Hull City	L Slough v. Barnet

LEAGUE TABLES, 1970-1971

LEAGUE DIVISION II (Up to and including 5th December, 1970)

	P	W	D	L	F	A	W	D	L	F	A	Pts
Leicester ..	20	8	1	1	21	6	4	4	2	14	11	29
Luton* ..	20	8	2	1	24	7	3	4	2	12	8	28
Hull ..	20	6	2	2	13	5	5	3	2	16	14	27
Cardiff ..	20	4	5	1	21	12	5	2	3	9	6	25
Sheffield Utd.	20	4	5	0	20	13	4	4	3	15	11	25
Carlisle ..	20	8	2	1	21	7	0	6	3	11	16	24
Norwich ..	20	5	5	1	14	9	2	4	3	9	10	23
Oxford ..	20	4	3	3	11	13	5	2	3	14	12	23
Sunderland†	20	7	2	2	21	10	2	2	5	7	11	22
Middlesbro	20	6	2	1	19	10	2	3	6	11	17	21
Sheff. Wed.†	21	6	2	3	15	15	2	3	5	11	18	21
Swindon ..	20	7	3	0	18	4	1	1	8	8	15	20
Millwall ..	20	6	2	2	16	5	2	2	6	8	16	20
Portsmouth	20	6	2	2	22	12	0	3	7	7	21	17
Q.P.R. ..	20	4	1	4	17	14	2	3	6	13	21	16
Bolton ..	21	5	1	5	16	14	1	3	6	7	18	16
WATFORD	20	3	3	3	8	7	1	5	5	13	25	16
Birmingham	20	3	5	2	10	9	2	0	8	10	19	15
Bristol City	20	5	2	2	17	15	0	3	8	7	21	15
Orient* ..	20	2	7	1	7	5	1	2	7	6	24	15
Charlton ..	20	2	4	4	14	18	1	2	7	6	19	12
Blackburn..	20	2	3	5	8	14	1	3	6	10	20	12

* Promoted teams

† Relegated teams

LONDON MID-WEEK LEAGUE (Up to and including 7th December, 1970)

	P	W	D	L	F	A	Pts
Peterborough United	16	8	5	3	31	22	21
WATFORD ..	14	7	5	2	30	16	19
Luton Town ..	13	8	2	3	34	19	18
Millwall ..	13	5	5	3	30	22	15
Charlton Athletic	13	6	2	5	29	21	14
Orient ..	15	3	7	5	22	25	13
Brighton & Hove Albion	12	5	2	5	21	21	12
Southend United	13	3	4	6	18	28	10
Colchester United	12	1	5	6	12	21	7
Aldershot ..	14	2	3	9	14	40	7

S.E. COUNTIES LEAGUE (Senior Section) (Up to and including 5th December, 1970)

	P	W	D	L	F	A	Pts
Tottenham ..	14	12	3	0	50	16	27
Millwall ..	15	10	1	4	19	9	21
Arsenal ..	14	8	4	2	33	14	20
Chelsea ..	14	9	1	4	34	17	19
West Ham ..	15	9	1	5	34	21	19
Crystal Palace	13	7	4	2	23	17	18
Luton Town ..	15	7	3	5	37	26	17
Orient ..	14	6	3	5	23	18	15
Ipswich Town	15	5	5	5	19	18	15
Q.P.R.	14	7	1	6	27	26	15
Charlton ..	15	6	3	6	25	25	15
Gillingham ..	14	4	2	8	21	31	10
Fulham ..	13	3	1	9	19	31	7
WATFORD ..	15	1	4	10	17	39	6
Reading ..	15	0	4	11	8	48	4
Brentford ..	14	1	0	13	17	50	2

ROLL CALL, 1970-1971

(Up to and including 5th December, 1970)

LEAGUE DIVISION II (Substitutes in brackets)

<i>F. L. Appearances</i>	<i>F. L. Scorers</i>
Butler .. 3	Eddy .. 2
Eddy .. 20	Garbett .. 1
Endean .. 4 (2)	Lees .. 2
Franks .. 2 (2)	Scullion .. 1
Garbett .. 17 (2)	Walley .. 4
Lees .. 20	Welbourne .. 1
Lugg .. 11 (3)	Wigg .. 8
Packer .. 9 (3)	Woods .. 2
Scullion .. 20	
Sinclair .. 6 (1)	
Walker .. 20	
Walley .. 20	
Welbourne .. 17	
Wigg .. 19	
Williams .. 12	
Woods .. 20	

SOUTH-EAST COUNTIES LEAGUE

<i>Appearances</i>	<i>Appearances</i>
Ayling .. 2	Tibbles .. 4
Basri .. 10	Walker .. 11
Dale .. 2	Walsh .. 8
Dean .. 5	White .. 7
Dee .. 2	Wilby .. 6
Dunn .. 1	Wilson .. 9
Griggs .. 14	Yates .. 3
Hayes, Gary .. 8	
Hayes, Glen .. 1	
Hyde .. 1	
Johnson .. 1	
Kelby .. 1	
Margerrison .. 6	
McGettigan .. 4	
Millett .. 3	
Owen .. 14	
Payne .. 15	
Pegg .. 5	
Pritchard .. 1	
Read .. 3	
Ridout .. 2	
Sinnott .. 1	
Stafford .. 8	
Talbot .. 9	
<i>Scorers</i>	
Dale .. 1	
Griggs .. 5	
Hayes .. 1	
McGettigan .. 3	
Owen .. 3	
Wilson .. 1	
White .. 3	

LONDON MID-WEEK LEAGUE (League Cup in brackets)

<i>Appearances</i>	<i>Scorers</i>
Allen .. 5	Allen .. 3
Edmonds .. 12 (1)	Endean .. 4
Endean .. 11	Farley .. 3
Farley .. 13 (1)	Jennings .. 7
Franks .. 13 (1)	Lowery .. (1) 1
Garbett .. 1	Lugg .. 3
Hale .. 3	McGettigan .. 1
Hobbis .. 2	Owen .. 2
Jennings .. 10 (1)	Packer .. 1
Lewis .. 2	Sinclair .. 1
Lowery .. 7 (1)	Walker .. 2
Lugg .. 7	Welbourne .. 1
McGettigan .. 2	Opponents .. 1
Owen .. 6 (1)	
Packer .. 6	
Payne .. 2 (1)	
Pearce .. 14 (1)	
Sinclair .. 9 (1)	
Slater .. 2	
Talbot .. 2	
Walker, R. .. 13 (1)	
Welbourne .. 3	
Williams .. 7 (1)	
Wilson .. 2	

FOOTBALL LEAGUE CUP

<i>Appearances</i>	<i>Scorers</i>
Eddy .. 2	Scullion .. 1
Endean .. (1)	Wigg .. 2
Garbett .. 2	Woods .. 1
Lees .. 2	
Lugg .. 1	
Scullion .. 2	
Sinclair .. 1	
Walker .. 2	
Walley .. 2	
Welbourne .. 2	
Wigg .. 2	
Williams .. 2	
Woods .. 2	

RESERVE & JUNIOR FIXTURES, 1970-71

2nd Team—THE LONDON MID-WEEK LEAGUE

(LC) Denotes League Cup Fixture

Aug., 1970				F	A
Tues. 18	Orient ..	Away	1—1	295	
Wed. 26	Millwall ..	Away	1—5	285	
Sept.					
Wed. 2	Southend ..	Away	3—1	306	
Wed. 16	Peterborough ..	Home	1—2	1,056	
Tues. 22	Charlton ..	Away	2—2	278	
Wed. 30	Brighton ..	Away	1—1	792	
Oct.					
Wed. 7	Millwall ..	Home	6—0	925	
Wed. 14	Charlton ..	Home	1—0	1,164	
Wed. 21	Millwall (LC) ..	Away	1—3	127	
Wed. 28	Colchester ..	Home	3—1	1,084	
Nov.					
Tues. 3	Luton ..	Away	2—2	1,051	
Wed. 11	Southend ..	Home	2—1	1,109	
Wed. 18	Orient ..	Home	1—0	715	
Dec.					
Wed. 2	Brighton ..	Home	6—0	912	
Mon. 7	Peterborough ..	Away	0—0	848	
Wed. 16	Aldershot ..	Away	
Wed. 23	Luton ..	Home	
Wed. 30	Aldershot ..	Home	
Jan., 1971					
Wed. 6	Colchester (LC) ..	Home	
Wed. 13	Colchester ..	Away	
Tues. 19	Luton (LC) ..	Away	
Wed. 27	Orient (LC) ..	Home	
Feb.					
Tues. 2	Charlton (LC) ..	Away	
Wed. 10	Luton (LC) ..	Home	
Wed. 17	Southend (LC) ..	Away	
Mon. 22	Peterborough (LC) ..	Away	
Mar.					
Wed. 3	Peterborough (LC) ..	Home	
Wed. 10	Colchester (LC) ..	Away	
Wed. 17	Millwall (LC) ..	Home	
Wed. 24	Brighton (LC) ..	Home	
Wed. 31	Charlton (LC) ..	Home	
April					
Wed. 7	Aldershot (LC) ..	Home	
Wed. 14	Aldershot (LC) ..	Away	
Wed. 21	Southend (LC) ..	Home	
May					
Wed. 5	Brighton (LC) ..	Away	
Undated	Orient (LC) ..	Away	

RECORD GATES

Record League Gate
27,968 v. Queens Park Rangers 1969/70.
Record Cup Gate
34,099 v. Manchester United 1968/69.

SOUTH-EAST COUNTIES LEAGUE

Senior Division

Aug., 1970				F	A
Sat. 15	West Ham United ..	Home	2—1		
Sat. 22	Tottenham Hotspur ..	Away	0—5		
Sat. 29	Luton Town ..	Home	2—4		
Sept.					
Sat. 5	Arsenal ..	Away	1—1		
Sat. 12	West Ham (LC) ..	Home	3—0		
Sat. 19	Orient ..	Away	1—2		
Sat. 26	Millwall ..	Home	0—2		
Oct.					
Sat. 3	Chelsea ..	Away	1—1		
Sat. 10	Crystal Palace ..	Home	2—2		
Sat. 17	Orient (LC) ..	Away	1—1		
Sat. 24	Queens Park Rangers ..	Home	0—4		
Sat. 31	Charlton Athletic ..	Away	1—2		
Nov.					
Sat. 7	Ipswich Town ..	Home	1—2		
Sat. 14	Luton Town ..	Away	3—3		
Sat. 21	West Ham United ..	Away	1—4		
Sat. 28	Tottenham Hotspur ..	Home	1—4		
Dec.					
Sat. 5	Queens Park Rangers ..	Away	1—2		
Sat. 12	Arsenal ..	Home	
Sat. 19	Orient ..	Home	
Jan., 1971					
Sat. 2	Fulham ..	Home	
Sat. 9	Ipswich Town ..	Away	
Sat. 16	Charlton Athletic ..	Home	
Sat. 23	Gillingham ..	Away	
Sat. 30	Millwall ..	Away	
Feb.					
Sat. 20	Reading ..	Away	
Sat. 27	Crystal Palace ..	Away	
Mar.					
Sat. 13	Chelsea ..	Home	
Sat. 27	Fulham ..	Away	
April					
Sat. 3	Brentford ..	Away	
Sat. 10	Reading ..	Home	
May					
Sat. 1	Brentford ..	Home	
Sat. 8	Gillingham ..	Home	

DOUBLE DIAMOND WORKS WONDERS!

Brewed by **IND COOPE**



PAYNE BROS. (LEAVESDEN) LTD.

235 Horseshoe Lane

Garston, Watford

WD2 7JE

Telephone Garston 72014

Building Contractors to:

Herts County Council

H.M. Government

British Railways

Private architects, etc

Est. 1904

THE HANDYMAN'S SHOP

P. BECKFORD LTD.

307 BALDWINS LANE

CROXLEY GREEN

Telephone Rickmansworth 75697

- Timber, Hardboard and Mouldings
- Ironmongery and Tools
- Domestic Hardware
- Garden Requisites
- Key Cutting
- Electrical Accessories
- Glass cut to size

Stockists of high-class Decorating Materials.

Agents for Crown, Sanderson, Continental and Shand Kydd Wallpapers

Thomas McInerney & Sons Ltd.

*Building and
Civil Engineering Contractors*

McInerney House, The Green, Croxley Green,
Rickmansworth WD3 3HM

Telephone Rickmansworth 78111 (10 lines)

RODNEY GIBBONS LTD.

*Multiple Wallpaper and Paint Specialists
Lighting Decor*

LOCAL BRANCHES:

Stanmore, Edgware, Mill Hill, Wembley Central, South Harrow, North Harrow, Hendon, Brent, Colindale, Queensbury, Preston Park, Kingsbury.

Published by the Watford Football Club Ltd., Vicarage Road Ground, Watford.
Printed by C. H. Peacock, 124 Rickmansworth Road, Watford, Herts.

FOLLOW KEN FURPHY . . .

AND SIGN ON WITH

WATFORD OBSERVER

WATFORD (0)

Gold shirts, black shorts

1. MIKE WALKER
2. DAVE BUTLER
3. MIKE PACKER
4. TERRY GARBETT
5. WALTER LEES
6. KEITH EDDY
7. STEWART SCULLION
8. RON WIGG
9. ~~ROY SINCLAIR~~ LUGG
10. TOM WALLEY
11. CHARLIE WOODS
12. WELBOURNE

24456

LUTON TOWN (1)

White shirts, black shorts

1. TONY READ
2. JOHN RYAN
3. JACK BANNISTER
4. ROGER HOY
5. CHRIS NICHOLL
6. ALAN SLOUGH
7. JIMMY RYAN
8. DAVID COURT
9. MALCOLM McDONALD
10. MIKE KEEN
11. DON GIVENS
12. ~~VIVIAN BUSBY~~ COLLINS

	*

Scorers

Referee:

D. J. LYDEN (Birmingham)

Ball Donor:

GEORGE AND ROBERTS (Rickmansworth) LTD.

Result

Linesmen:

H. POWELL (Stourport-on-Severn)
Red flag

D. N. HARWOOD (Nottingham)
Orange flag

Don't be late for the match—
get a watch from

JACKSON
(from B. S. Morse)

"Watford's oldest jewellers
now in fourth generation"
24 HIGH STREET
WATFORD
WATFORD 32449