



LUTON TOWN

FOOTBALL CLUB

Telephone: Luton 23151



DIVISION III

v MANSFIELD TOWN

Saturday 14 March 1970 Kick-off: 3.00 p m

Official Programme: Price 1/-

FIXTURES 1969-70

DIVISION THREE

Date	Opponents	Attendance	Result
August			
Sat 9	BARROW	12,080 (H)	3-0
Wed 13	FLC1 Peterboro'	10,249 (A)	1-1
Sat 16	Bournemouth	9,735 (A)	1-0
Tues 19	FLC1 PETERBORO'	13,105 (H)	5-2
Sat 23	ORIENT	13,761 (H)	3-2
Tues 26	HALIFAX T.	13,759 (H)	1-1
Sat 30	Gillingham	7,792 (A)	2-0
September			
Tues 2	FLC2 MILLWALL	17,372 (H)	2-2
Sat 6	BRISTOL R.	15,198 (H)	4-0
Mon 8	FLC2 Millwall	14,125 (A)	1-0
Sat 13	Bradford City	10,851 (A)	1-1
Tues 16	Southport	4,003 (A)	3-0
Sat 20	SHREWSBURY	15,396 (H)	2-2
Tues 23	FLC3 Sheffield U.	16,884 (A)	0-3
Sat 27	Plymouth Argyle	14,111 (A)	3-1
Tues 30	Walsall	7,557 (A)	3-1
October			
Sat 4	STOCKPORT	15,944 (H)	2-0
Tues 7	BOURNEMOUTH	18,065 (H)	0-0
Sat 11	Doncaster Rovers	17,380 (A)	0-2
Sat 18	Brighton & H.A.	18,722 (A)	2-1
Sat 25	TORQUAY U.	16,087 (H)	1-1
November			
Sat 1	Rotherham U.	8,727 (A)	1-1
Sat 8	BARNSELY	17,442 (H)	1-1
Sat 15	FAC1 Bournemouth	7,362 (A)	1-1
Tues 18	FAC1 BOURNEM'TH	13,384 (H)	3-1
Sat 22	ROCHDALE	15,876 (H)	2-0
Tues 25	FULHAM	16,485 (H)	1-0
December			
Sat 6	FAC2 Hillingdon	9,333 (A)	1-2
Sat 13	BRADFORD C.	11,857 (H)	5-0
Fri 26	Orient	17,619 (A)	0-1
Sat 27	GILLINGHAM	17,402 (H)	1-2
1970			
January			
Sat 10	Shrewsbury Town	4,206 (A)	1-5
Sat 17	PLYMOUTH A.	12,358 (H)	0-2
Sat 24	Bury (4)	6,893 (A)	3-1
Sat 31	Stockport County	3,922 (A)	1-1
February			
Sat 7	DONCASTER (5)	12,876 (H)	4-0
Tues 10	Bristol Rovers	13,297 (A)	0-3
Sat 14	Barrow	3,843 (A)	1-2
Sat 21	Torquay United (6)	6,819 (A)	2-2
Sat 28	BRIGHTON	17,584 (H)	1-1
March			
Tues 3	TRANMERE R.	11,368 (H)	2-0
Wed 11	Reading	18,783 (A)	1-0
Sat 14	MANSFIELD (SF)	(H)	(H)
Tues 17	BURY	(H)	(H)
Sat 21	Tranmere Rovers	(A)	(A)
Fri 27	ROTHERHAM U.	(H)	(H)
Sat 28	READING	(H)	(H)
Mon 30			
Tues 31	Barnsley	(A)	(A)
April			
Sat 4	Halifax Town	(A)	(A)
Mon 6	BEDFORD TOWN ..	(H)	(H)
	Beds. Pro. Cup Final		
Wed 8	Fulham	(A)	(A)
Sat 11	WALSALL (7.30 p m)	(H)	(H)
Tues 14	SOUTHPORT	(H)	(H)
Mon 20	Mansfield	(A)	(A)
Sat 25	Rochdale	(A)	(A)

FOOTBALL COMBINATION

Date	Opponents	Attendance	Result
August			
Sat 16	PETERBORO'	1,326 (H)	4-2
Sat 23	Norwich City	(A)	0-0
Sat 30	TOTTENHAM H.	1,683 (H)	2-2
September			
Sat 6	Gillingham	(A)	2-3
Sat 13	BOURNEMOUTH	1,124 (H)	3-3
Tues 23	Northampton Town	(A)	1-5
Sat 27	SWINDON T.	1,306 (H)	2-0
October			
Wed 1	Crystal Palace	(A)	1-2
Sat 11	BIRMINGHAM	1,309 (H)	1-2
Sat 25	Tottenham H. (Cup)	(A)	1-3
November			
Sat 1	SOUTHAMPTON	1,239 (H)	5-3
Tues 4	Queens Park Rangers	(A)	5-1
Sat 8	Leicester City	(A)	0-4
Sat 22			
December			
Sat 13	Bristol Rovers	(A)	1-1
Tues 16	BIRMINGHAM (Cup)	491 (H)	3-0
Sat 20	Arsenal	(A)	0-5
Sat 27	Northampton (Cup)	(A)	2-2
Tues 30	Walsall (Cup)	(A)	
1970			
January			
Sat 3	LEICESTER C (Cup)	742 (H)	0-4
Mon 12	WALSALL (Cup)	619 (H)	1-1
Sat 17	Plymouth Argyle	(A)	0-1
Tues 20	TOTTENHAM (Cup)	1,046 (H)	0-2
Sat 24	READING	739 (H)	2-0
Tues 27	Birmingham (Cup)	(A)	1-2
Sat 31	N'HTON (Cup)	1,006 (H)	4-1
February			
Sat 7			
Mon 16	CHELSEA	1,907 (H)	1-0
Sat 21	SWANSEA T.	937 (H)	3-1
Wed 25	Cardiff City	(A)	0-3
Sat 28			
March			
Sat 14			
Sat 21	West Ham United	(A)	(A)
Mon 23	Leicester C.	(A)	(A)
April			
Thurs 2	Fulham	(A)	(A)
Sat 4	BRISTOL C.	(H)	(H)
Wed 15	OXFORD U.	(H)	(H)
To be re-arranged			
	Walsall	(A)	(A)
	Ipswich	(H)	(H)
© Football League Ltd, 1969			
Published by Luton Town Football and Athletic Company Limited, Kenilworth Road, Luton.			
Printed by White Crescent Press Limited, Crescent Road, Luton. Telephone Luton 23122			



LUTON TOWN FOOTBALL AND ATHLETIC CO, LTD

KENILWORTH ROAD, LUTON, BEDFORDSHIRE
TELEPHONE 0582 23151

Established 1885 Incorporated 1897
First Professional Side Season 1891-1892
Football League Division III Champions 1936-37
Football League Division II Runners-up 1954-55
FA Challenge Cup Finalists 1958-59
Football League Division IV Champions 1967-68

OFFICIAL PROGRAMME 14 MARCH 1970

Directors: A. T. HUNT, *Chairman*. L. S. HAWKINS, *Vice-Chairman*.

J. A. C. BAIN, R. I. BURR, T. HODGSON,

ERIC MORECAMBE, H. RICHARDSON

Chief Executive and Manager: Alec Stock Secretary: R. Readhead

Hon Medical Officers: Dr C. J. Buckingham, MB, BS and

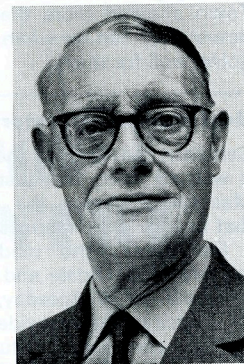
Dr P. J. Burrows, MB, BCh, DOBst, RCOG

Hon Dental Surgeon: A. Hargreaves, Esq

Hon Solicitor: E. Waller, Esq Auditors: Messrs Keens, Shay, Keens & Co

New Series
Vol. 1 No. 24

Eric Pugh's Page



This is really a pretty severe testing time for the nerves of all those who have the fortunes of Luton Town FC at heart.

In what has been a very up-and-down period since Christmas, their hopes of promotion have blown cold, following a succession of defeats, have been fanned into life again, only for unexpected setbacks such as the one at Barrow, to cause another re-adjustment of ideas.

The hunt is on once again

Then, just when it appeared that hope for this season would have to be laid aside, back comes the team with another run which, from the last four matches, has brought them six points.

So, once again, the hunt is on, with the decisive blow coming in the last thirty seconds of the match at Reading on Wednesday evening.

That had the effect of enabling them to leapfrog above the Berkshire team and, at the same time, resume touching distance with the present leaders.

Four out of five at home now

With, including the one today, four of the next five matches due to be played at Kenilworth Road, the opportunity looks bright again. However, there are also tough away encounters to be faced, though, by and large, the Town's form this season has been more consistent against the better ordered teams when they have been playing away.

From the look of things, the issue may well not be finally decided until the closing matches of the season which is very good for the attendances of the

leading contenders as clubs like Reading, Brighton, Orient and Bristol Rovers will aver.

Drawing power of top teams

That Reading should house nearly 19,000 on a night of pouring rain and one on which there must have been some doubts about the fitness of the pitch, is a tribute to the drawing power of the top teams in the Third Division.

In particular, the Town have been a popular drawing card wherever they have been, and invariably, they have managed to swell the crowd with hundreds of their followers.

Rewarded with a cracking game

Certainly, they had some solid support on Wednesday when a specially chartered train was again well supported and many other fans made the comparatively short trip by road.

They were rewarded with a cracking, exciting game in the course of which the Town showed more than a hint of the power they can be when things are really going well for them.

Goal was out of a story book

Certainly, they looked the better side and it was no more than just when Malcolm Macdonald scored the type of winner that usually only happens in story books.

For those who made the abortive journey to Rochdale and also braved the elements on Wednesday, the result and the excitement provided was ample compensation for what turned out to be a thoroughly cold journey.

Mansfield - the cup-fighters

Today, Mansfield Town, whose main exploits this season, as they were last season, have been in Cup-fighting, are the visitors.

Maybe had their programme not been so disrupted by the weather and had they not been so pre-occupied with their Cup exploits, their League position would have been more challenging.

Even though they have matches in hand, it is too late now for them to make any sort of an entry into the promotion race, but they have some good recent

results in the League at which to be proud, and they put up a workmanlike performance in accounting for the useful Barnsley team earlier this week.

Bury have been a disappointment

Then, on Tuesday evening (7.30 p.m), comes a visit from Bury, one of the teams relegated last season and who, in some quarters, carried some confidence that they would make a brave bid to go straight back to Division II.

However, for them, it has been a disappointing season, except in one respect. At the moment, they are joint leading scorers in the Third Division with Bristol Rovers and well in line for a place in the lucrative, sponsored pre-season competition.

Worst defensive record in division

So far as their League position is concerned, it is unfortunate for them that the soundness of their defence has not matched the ability of their forwards to score frequently and they have conceded more than any other team.

So, on the face of things, we can look forward to an open game on Tuesday and perhaps a crop of goals for the Town.

Town's bid to sign Court failed

Unfortunately, the Town's attempts to sign reinforcements has not borne fruit and, with the deadline due at midnight on Monday, it begins to look as if they will have to rely on those players already on the books.

With considerable determination, Manager Alec Stock tried to secure David Court, Arsenal's midfield player, for whom he agreed a fee of £30,000, but then found the deal folding up under him because it was impossible to meet the terms of contract demanded by the player.

A pity this, but it is no use crying over spilt milk, as Stock well knows, and there are limits to which a club like the Town can go.

OUR COVER PICTURE

John Collins watches closely as Malcolm Macdonald goes up with John Napier for a high ball. Incident from the Town's home match with Brighton.

Picture: The Luton News and Green 'Un.

CONNELLS

Auctioneers, Surveyors
Valuers and Estate Agents

5, Upper George Street, Luton

Telephone: 31261 for

Houses and Bungalows

COUNTRY HOUSES, COMMERCIAL AND
INDUSTRIAL PREMISES, COMPULSORY
PURCHASE NEGOTIATIONS IN

Luton and Surrounding Districts

Branch Offices throughout
HERTFORDSHIRE, BEDFORDSHIRE, BUCKINGHAMSHIRE
and at 62, GROSVENOR STREET, LONDON, W.1.



THE ONE STOP SHOPPING CENTRE for

Hardware, Electrical, Men's Wear, Fuel, Catering,
Footwear, Bookshop, Drapery, Furnishing, Toys &
Sports, Grocery, Greenfruit and Butchery with Credit
Facilities to suit your requirements.

PLUS DIVIDEND STAMPS

SUPERSTORE

4 NEW BEDFORD ROAD

LUTON. Tel: 21171

LUTON CO-OPERATIVE SOCIETY LTD



From Bob's Office



Bob Readhead, Secretary

Doubtless, most supporters will have learned already that our re-arrangement of unplayed League fixtures is now complete, with agreement having been reached with Rochdale this week to visit them on Saturday 25 April, which should complete our list for the season.

Naturally, we had hoped to end before that date, but the unfortunate postponement of the game at Spotland last Saturday, prevented that, and we now face the prospect of participating in what looks like being an exciting finish with two away matches.

Easter kick-off times

Already, we had arranged to play the return with today's visitors, Mansfield Town at Field Mill, on Monday, 20 April (7.30 p.m.). The kick-off at Rochdale will be at 3 p.m.

While on the subject of kick-off times, will supporters please note that both our home games at Easter, against Rotherham on Good Friday and Reading the following day, will be at 3 p.m.

Possibility of Amateur Cup replay

Should St Albans City and Dagenham draw their Amateur Cup semi-final this afternoon, the replay will take place on this ground next Saturday (3 p.m.).

Prices of admission, as fixed by the Football Association, are ground 5s, covered terraces 6s, seats 8s (unreserved) and 10s (bookable in advance).

Should the replay be necessary then the match scheduled for next Saturday, the Chiltern Youth League Cup Final, will be put back to the following Monday evening.

Heavy demands being made

Some difficulty is being experienced in meeting all demands for the use of the ground in the closing weeks of the season as our firm intention is that no matches will be played here after Saturday, 18 April which is the date of the Beds. Senior Cup Final, but it is hoped that all will be fitted in.

There have been quite a few enquiries from supporters about our trip to Spain beginning at the end of next month.

Supporters' interest in Spain

As outlined in the previous programme, there is on offer a package deal which will enable supporters to fly with us from Gatwick to Alicante and which will include accommodation at an hotel at Benidorm, the resort where we shall be making our headquarters for the fifteen days.

It is hoped that the response will become even more encouraging because the more fans who make the trip, the easier it will be to arrange coach trips to the various matches.

Competition winner

Result of our last competition which posed the question, 'How many Laws are there in the game of Association Football?'

The answer is seventeen and the first correct solution opened was that submitted by Mr W. A. Wilsmore, 18 Meadway, Welwyn Garden City, who receives a watch.

This week's poser

This week's competition, 'What was the surname of a Luton centre-forward named "Hugh", who joined a First Division club, and then, for a spell after finishing with the game, became a licensee?'

Entries must be accompanied by a sixpence entrance fee and the prize will be a lady's or gentleman's watch.

Outside-right. Inside-right.



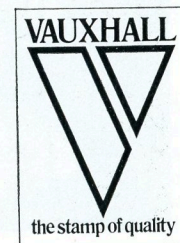
What makes Viva the 1-litre league leader?

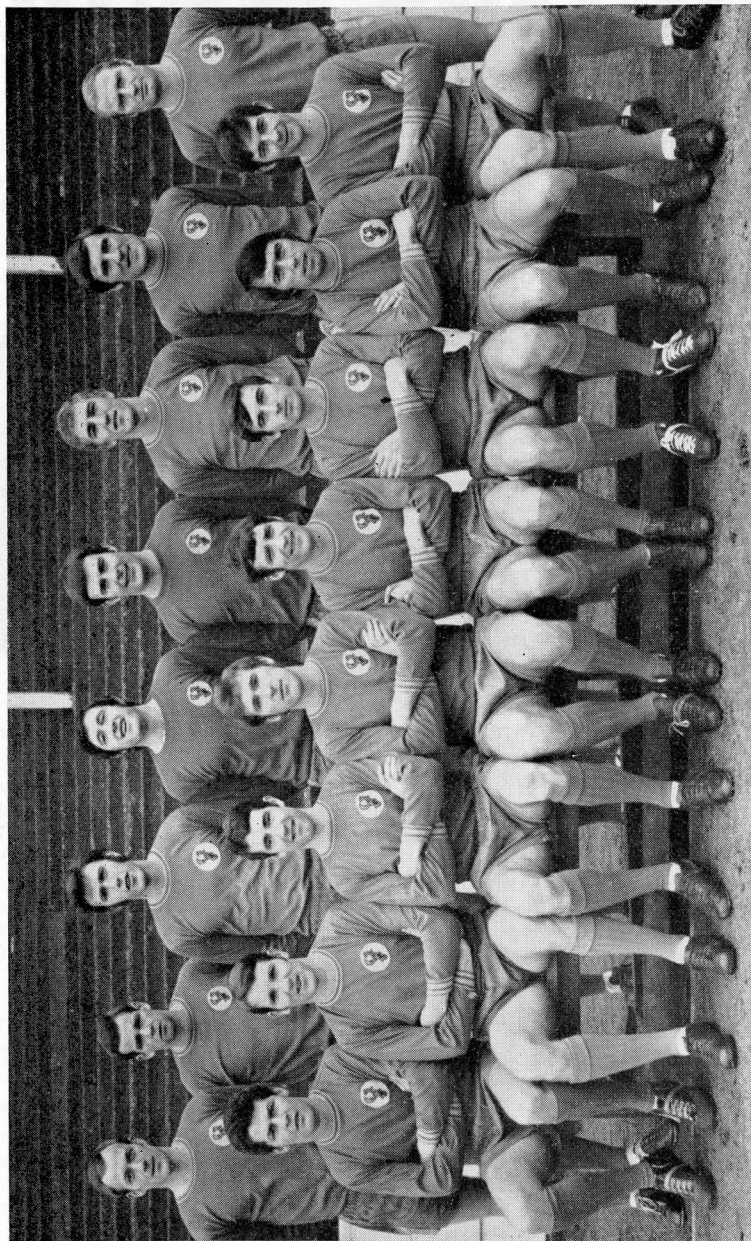
The shape. The forward line's great – so is the back.

The space. Full 4/5 passenger comfort – and luggage-room to match!

The pace. All-action performance, with sports-car handling – and in-built safety.

The price. Viva prices start at £701. And there are 20 all-star performers to choose from. Why don't you join the Viva supporters club?





Back Row: (left to right) Walker, Keeley, Partridge, Hollins (now on loan to Notts. Forest); Brown, Boam, Waller, Hopkinson; Front Row: (left to right), Roberts, Pate, Goodfellow, Stenson, Quigley, Jones, Sharkey and Bates.

Picture: Chronicle-Advertiser, Mansfield.

FA Cup always seems to spark off Mansfield Town

By Tony Pullein

Life has been an extraordinary mixture of Cup success and League failure for the Stags these past two seasons.

At the moment their League position is fairly comfortable but for the previous two campaigns the threat of relegation to Division IV has been with them constantly and last season only a magnificent late burst – they won four of their last five games – saved them from the drop.

Reached quarter-finals

Yet, while they faced the real prospect of struggling along with the Football League's worst teams, they shocked some of the elite from the upper strata.

Last season they created a club record by reaching the FA Cup quarter-final for the first time, kicking out Second Division Sheffield United (2-1) and First Division West Ham (3-0) on the way.

This season they battled their way to the fifth round, finally falling to the efficiency of Leeds United who beat them 2-0 at Elland Road.

Mansfield have been averaging two or three goals per game in recent matches, the most dangerous men in front of goal being Dudley Roberts and Dai Jones.

Roberts, top scorer with ten goals, started his professional career with Coventry City but had only rare opportunities in their first team.

But he settled in well at inside-forward following his move to Mansfield in March 1968 and was ever-present last season.

Jones has travelled quite a bit

Dai Jones has travelled a bit since originally trying his luck with Crewe.

Birmingham gave him a few First Division games but it was after moving to Millwall in 1959 that he really began to make headway.

He hit seventy goals in six seasons for the Lions, put in three years with Newport County then joined Mansfield in 1967. He has scored nine times this season.

Experienced men in the attack!

Two of their most experienced men are forwards Nick Sharkey and Jimmy Goodfellow, who have spent the major part of their careers at the highest level.

Nick joined Sunderland from Scottish junior football in 1959 and made 99 League appearances for them.

In March, 1963 he crashed home five goals in one match against Norwich and in 1964-65 he was the club's top scorer with eighteen goals.

He moved to Leicester in 1966-67 but never really hit it off at Filbert Street.

Mansfield signed him two seasons back and last season he led their list with thirteen goals in League games. Nick is a former Scottish under-23 international.

Another former Leicester man

Goodfellow also played for Leicester City before linking with Mansfield. He started with now-defunct Third Lanark in the Scottish First Division, making over 100 League appearances for them before his move to Leicester in 1964.

He was centre-forward in the Leicester team beaten by Chelsea in the 1965 League Cup final, that same season topping the club's League scoring list. He is now in his third campaign with the Stags.

Regular in the first team

John Stenson arrived from Charlton during the close-season and is enjoying regular League football for the first time.

Ray Keeley also started his League career with Charlton but got only one League game with them.

He went outside the League to Gravesend before signing for Mansfield last year. Malcolm Partridge came through Mansfield's junior sides to make the League team in 1967-68.

Ex-Watford full-back

Goalkeeper Graham Brown was signed from Millwall this season after performing so well during a trial period. Left-back Clive Walker had spent his previous service with Leicester City and Nottingham Forest but had not enjoyed a great deal of League experience.

Right-back Sandy Pate didn't get

(continued on page 14)

Luton's leading newsagents

HOUGHTONS

CONFECTIONERS · TOBACCONISTS
GREETINGS CARD SPECIALISTS

- ★ 16 The Parade, Hill Rise
- ★ 3 Ashwell Parade, Sundon Park
- ★ 82 Putteridge Road, Stopsley
- ★ 253 Birdsfoot Lane
- ★ 150 Sundon Park Road
- ★ Jansel House, Stopsley
- ★ 217 Dunstable Road
- ★ 178 Ashcroft Road, Stopsley
- ★ 8 Hillborough Crescent, Houghton Regis

*Whenever you are near
— pay us a visit
We will be pleased
to serve you*

buy your
POST
with full-time
results outside
the ground
after the match



RICHARDSON and BOTTOMS

LIMITED

*Builders
and
Contractors*

107, BISCOT RD.
Luton

Telephone: 25628

Football League Review



THE OFFICIAL JOURNAL
OF THE FOOTBALL LEAGUE

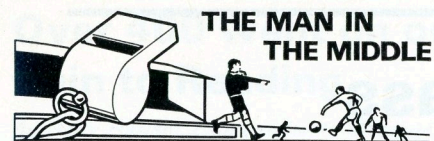
ONE SHILLING



No flannel- All Flavour



Round here
that's what Park Drive
means to us
Park Drive Flavour



IORWERTH JONES

It must be a tremendous advantage to any referee to have played the game. Most of Iorwerth Jones's understanding of the players' point of view was derived from his playing days as an amateur with Southern League club, Merthyr Town.

'Unfortunately, I suffered an injury to my left knee which amounted to the removal of a cartilage, and that ended my playing ambitions,' he explains.

'I wanted to continue to participate in football so I took up refereeing, originally I joined the Pontypridd and District League, and went from there to the South Wales Amateur League, the Welsh League and the Football League,' he says.

In line for the World Cup

Iorwerth Jones was appointed to the linesman's list of the Football League in 1961, and three years ago went on the referees' list.

He is now on the FIFA panel and was recently appointed as a substitute referee for the 1970 World Cup series in Mexico.

He has refereed European Cup Winners' Cup matches and was linesman for an England v Scotland (Under-23) international and a Welsh Cup Final.

PERSONALITY PROFILE

21 Bob Delgado



22 Don Shanks



Two comparative newcomers to the playing staff are Bob Delgado (left) and Don Shanks.

Both are defenders who have already made their mark in the reserve team.

Delgado was playing with success for Barry Town in the Southern League and Shanks was snapped up when he was released as an apprentice professional by Fulham.

Two in a class of their own



Comfort for all manner of functions – that is the motto of the new, luxurious Hatters' Club which is proving so popular.

Today, the club is open until 2.55 p m for drinks and snacks and re-opens from 4.45 to 5.30 p m and then continuously from 6 o'clock until 11.30 p m.

The New Sports Centre



Our new Sports Centre at 231 Dunstable Road which offers a comprehensive list of sports goods, toys and games at competitive prices.

Over 400 went on our train to Reading

By Harry Haslam, Entertainments Manager

Popularity of our chartered train trips continues and, although there was an evening kick-off, 440 supporters made the trip to Reading last Wednesday and there were 232 on the train to Rochdale last Saturday.

Unfortunately, the latter were disappointed when the match was postponed but, of course, there is nothing we can do to insure against this and it is something that is completely out of our hands.

One is booked for Tranmere

A train has been booked next Saturday for the match with Tranmere Rovers and timings have now been confirmed as follows:

Depart Luton 9.40 a m, Bedford 10.04 a m, arrive Rock Ferry 1.36 p m. (Ground is about ten minutes from the station.)

Return journey begins at 5.55 p m, arriving Bedford 9.16 p m, Luton 9.42 p m. Return fare is £1 5s.

At least two more will be booked

Of the remaining away matches, trains will definitely be chartered for the one at Halifax on Saturday, 4 April, and for the final match of the season at Rochdale on 25 April.

The visit to Barnsley is on the Tuesday evening after Easter and consideration for a train there must be in relation to the position at the top of the table at the time, and therefore, the probable demand, coupled with whether we can secure timings that make the trip feasible.

Of the others, there will be no train for Fulham, nor for Mansfield because, in the latter case, it means disembarking at Nottingham and covering the remainder of the journey by road.

SUPPORTER OF THE WEEK

CYRIL TOMPKINS of 36 Essex Street, Luton, who has been supporting the Town for sixty-five years, and can remember them playing on the old Brown's timber yard and on the present site of the Odeon Cinema.

For many years, he walked from Toddington to attend the matches and, even now, stands on the terraces.



Says Mr D. Digby, of 39 Charlwood Road, Luton, who put forward his name, 'I hope you will agree with me that he is a true supporter and deserves to be the guest of the club for a match.'

TODAY'S MASCOT

DAVID GALE, 21 Pegsdon Close, Luton, who is nine years old.

LUTON TOWN FC POOL

LUCKY NUMBERS

Saturday: £20-18415; £15-26992; £5-34030; £5-13949; £2-25263; £2-30075; £1-41136.

Monday: £20-25064; £15-04895; £5-11224; £5-46786; £2-05271; £2-32587; £1-28049.

Tuesday: £20-43407; £15-19300; £5-36327; £5-29502; £2-47813; £2-15694; £1-00847.

Wednesday: £20-10955; £15-44291; £5-02782; £5-21633; £2-12186; £2-39215; £1-23028.

Thursday: £20-07388; £15-14805; £5-33911; £5-28709; £2-42962; £2-01413; £1-09725.

Friday: £20-24741; £15-06429; £5-49608; £5-16571; £2-20487; £2-23411; £1-12617.

BONANZA WINNERS

Result of the Luton Town FC Bonanza Draw made at half time in the Luton v Tranmere match.

1st prize: radio – 2046

2nd prize: radio – 1445

3rd prize: watch – 0034

4th prize: watch – 2431

5th prize: Odeon Cinema tickets – 1823

6th prize: Odeon Cinema tickets – 0333



FOOTBALL LEAGUE

V

SCOTTISH LEAGUE

AT COVENTRY

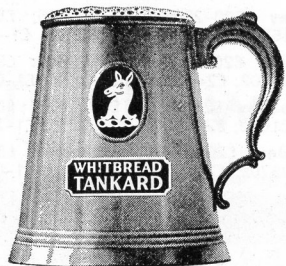
WEDNESDAY 18 MARCH 1970

KICK-OFF 7.30 p m

Tickets in advance are obtainable from: 'The Secretary, Coventry City FC, Highfield Road, Coventry', as follows:

Main Stand and Sky Blue Stand 16s, 13s, 11s. Admission to ground (6s and 5s) will be by cash at the turnstiles.

Applications for tickets are to be accompanied by remittance and stamped, addressed envelope for the return of tickets.



WHITBREAD
TANKARD
cool,
clear, refreshing

Available in all Bars

DIVISION III

Torquay United 2 Luton Town 2

Davie; Ryan, Jardine; Slough, Nicholl, Moore; French, Macdonald, Tees, Keen, Harrison. Substitute: Busby. Scorers: Harrison, Macdonald.

Luton Town 1 Brighton 1

Davie; Ryan, Jardine; Slough, Nicholl, Moore; French, Collins, Macdonald, Keen, Harrison. Substitute: Tees. Scorer: Macdonald (pen).

Luton Town 2 Tranmere Rovers 0

Davie; Ryan, Jardine; Slough, Branston, Moore; Macdonald, Collins, Tees, Keen, French. Substitute: Allen. Scorers: Macdonald, Ryan.

Reading 0 Luton Town 1

Davie; Ryan, Jardine; Slough, Branston, Moore; Collins, Macdonald, Tees, Keen, French, (Allen). Scorer: Macdonald.

Tony Pullein (continued from page 9)

many chances at Watford, but has been a regular since his transfer to the Stags in October 1967.

John Quigley joined the club from Bristol City in July 1968. John originally signed professional for Nottingham Forest in 1957 and two years later scored the semi-final goal that took them to Wembley.

He received a winners' medal when helping Forest overcome us in the final and he gave Forest splendid service until he finally departed for Huddersfield in 1966. But after only a short stay, he moved again to Bristol City.

Boam has been watched

Wing-half Phil Waller distinguished himself for several seasons with Derby County signing for Mansfield in 1967. Stuart Boam grew up with Mansfield and entered the League side in 1967-68. Many of the bigger clubs have watched him consistently.

Our League record against Mansfield is:

	P	W	D	L	F	A	Pts
Home	4	2	1	1	8	6	5
Away	4	0	1	3	3	9	1
	8	2	2	4	11	15	6

Suggestion for a LUTON TOWN signature tune sung to the tune of 'There'll always be an England'.

There'll always be a LUTON,
and at the top we'll be.
If LUTON means as much to you,
as LUTON means to me.

And when they are a-struggling
Which is sometimes plain to see
We'll shout for the boys in black and white
and storm to victory.

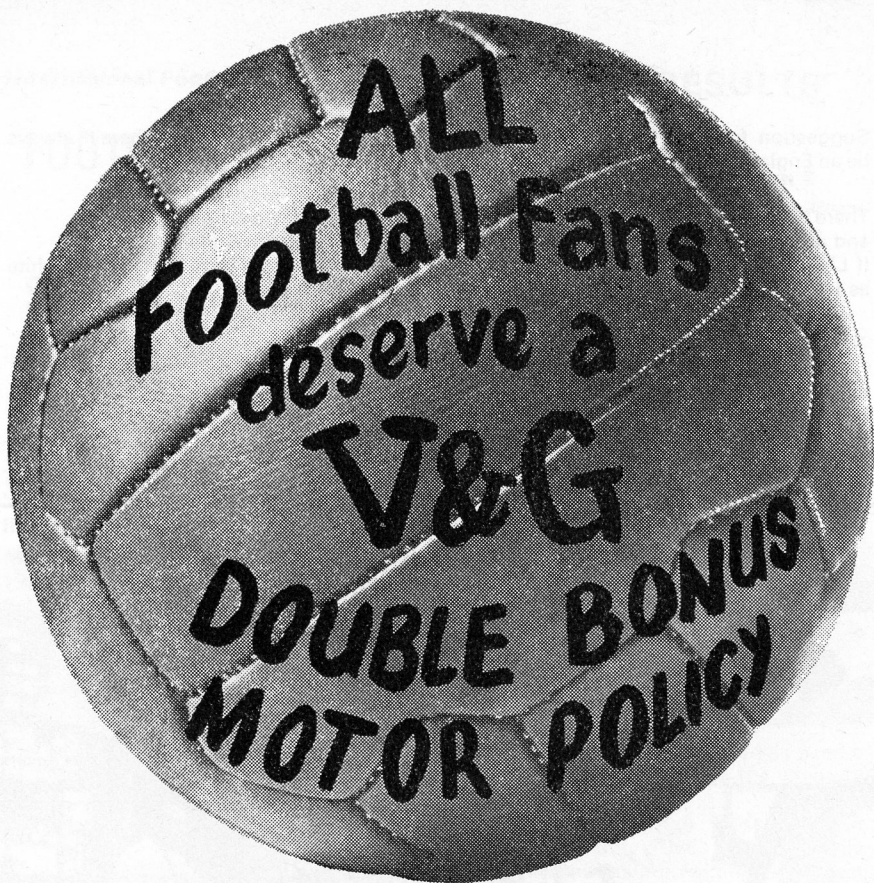
There'll always be a LUTON
and at the top we'll be.
If LUTON means as much to you,
as LUTON means to me.

A devoted fan



Part of the new Luton Town Sports Centre at 231 Dunstable Road. Most sports are catered for and there is a large selection of toys and games on sale.

Picture: Bowles-Bowman Associates, 27 High Town Road, Luton



**THE V&G
DOUBLE BONUS
MOTOR INSURANCE POLICY
GIVES FAIRER TERMS
TO EVERY DRIVER**

For further information contact your local officially appointed V & G Insurance Broker, or write or phone the address below.

V&G THE VEHICLE & GENERAL
GROUP OF
INSURANCE COMPANIES

Group Headquarters,
Administration & Operations:
Bushey House,
High Street, Bushey,
Hertfordshire.
Tel: 01-950 4311.

THE VEHICLE & GENERAL INSURANCE CO. LTD.
LIFE, CASUALTY & GENERAL INSURANCE CO. LTD.
AUTOMOBILE & GENERAL INSURANCE CO. LTD.
THE GENERAL & COMMERCIAL MOTOR INSURANCE CO. LTD.
METROPOLITAN GENERAL INSURANCE CO. LTD.
WORLD AUXILIARY INSURANCE CORPORATION LTD.
PIONEER LIFE ASSURANCE CO. LTD.

	APPEARANCES				GOALS			
	FL	FAC	FLC	FC	FL	FAC	FLC	FC
<i>Goalkeepers</i>								
DAVIE, A.	28	3	2	4	—	—	—	—
READ, A.	6	—	3	14	—	—	—	1
STARLING, A.	—	—	—	13	—	—	—	—
<i>Full Backs</i>								
BANNISTER, J.	30	3	5	1	—	—	—	—
DOUGAN, M.	6	—	3	5	—	—	—	1
HOOPER, G.	—	—	—	15	—	—	—	—
JARDINE, F.	9	1	—	20	—	—	—	—
RYAN, J.	24	3	2	8	1	—	—	—
SHANKS, D.	—	—	—	4	—	—	—	—
LOVERIDGE, D.	—	—	—	7	—	—	—	—
<i>Half Backs</i>								
BRANSTON, T.	8	2	5	17	—	—	1	—
DELGADO, A.	—	—	—	3	—	—	—	—
KEEN, M.	34	3	5	—	2	—	—	—
GUILD, A.	—	—	—	25	—	—	—	4
MOORE, J.	11	—	1	18	—	—	—	—
NICHOLL, C.	27	1	—	2	2	—	—	—
SLOUGH, A.	33	3	5	2	2	—	—	—
THOMPSON, P.	—	—	—	2	—	—	—	—
WAINWRIGHT, R.	—	—	—	23	—	—	—	—
<i>Forwards</i>								
ALLEN, K.	30	3	5	4	5	—	2	1
BUSBY, V.	—	—	—	6	—	—	—	3
COLLINS, J.	31	3	3	3	9	2	—	1
FRENCH, G.	33	3	5	1	4	—	—	—
HARRISON, M.	6	1	—	17	2	—	—	6
LEWIS, B.	6	—	2	8	—	—	2	4
MacDONALD, M.	34	3	5	2	19	1	2	4
PHILLIPS, P.	4	—	—	23	—	—	—	13
SHEFFIELD, L.	6	—	5	6	—	—	2	4
STEVENSON, M.	—	—	—	7	—	—	—	2
TEES, M.	28	3	1	1	11	2	—	—
SPARKES, N.	—	—	—	2	—	—	—	—
TUFFS, R.	—	—	—	1	—	—	—	—
ADAIR, K.	—	—	—	1	—	—	—	—
LEE, R.	—	—	—	3	—	—	—	—
HIPWELL, R.	—	—	—	16	—	—	—	—
FOSSEY, P.	—	—	—	10	—	—	—	1
SORBIE, R.	—	—	—	4	—	—	—	—
OPPONENT	—	—	—	—	1	—	—	1
AMATEURS	—	—	—	4	—	—	—	—

FL - Football League; FAC - FA Cup; FLC - Football League Cup; FC - Football Combination

Coming Matches

DIVISION III

TUESDAY, 17 MARCH

LUTON TOWN v BURY

KICK-OFF 7.30 p.m.

FRIDAY, 27 MARCH

LUTON TOWN v ROTHERHAM UTD

KICK-OFF 3 p.m.

SATURDAY, 28 MARCH

LUTON TOWN v READING

KICK-OFF 3 p.m.

Prices of admission:

Centre stand 10s, Wing stand 8s, Enclosure, Bobbers' stand, Oak Road terrace 6s (children) 3s, Kenilworth Road terrace 5s (children 2s 6d).

HOW THEY STAND

DIVISION III

	P	W	D	L	F	A	P
Brighton	37	19	9	9	47	30	47
Orient	33	17	11	5	48	25	45
Bristol Rovers	36	16	13	7	67	45	45
LUTON TOWN	34	17	10	7	58	34	44
Reading	35	17	9	9	61	53	43
Barnsley	37	15	11	11	55	48	41
Bradford City	35	15	9	11	48	39	39
Rochdale	34	15	7	12	54	43	37
Rotherham United	36	12	13	11	52	41	37
Torquay	35	11	14	10	49	45	36
Halifax Town	35	13	10	12	41	48	36
Mansfield Town	32	14	6	11	43	36	35
Fulham	33	11	13	9	55	46	35
Shrewsbury Town	33	11	13	9	47	43	35
Doncaster Rovers	36	12	10	14	41	42	34
Bury	37	13	7	17	67	71	33
Plymouth	35	12	9	14	40	43	33
Bournemouth	35	9	11	15	38	59	29
Walsall	31	11	6	14	33	48	28
Southport	33	9	9	15	38	43	27
Barrow	38	7	12	19	34	63	26
Tranmere Rovers	32	7	10	15	37	61	24
Gillingham	32	8	6	18	36	51	22
Stockport County	35	5	9	21	22	54	19

TODAY'S HALF-TIME SCORES

FIRST LIST

A Chelsea	Watford
B Leeds Utd	Man Utd
C Arsenal	Liverpool
D Coventry C	Sheff W
E Everton	Tottenham
F Notts F	Derby C
G Sunderland	Wolves
H West Brom	Newcastle
K West Ham	Ipswich T
L Birmingham	Middlesbro
M Blackburn	Oxford U
N Blackpool	Bristol C

SECOND LIST

A Cardiff C	Huddsfd
B Charlton A	Aston Villa
C Hull C	Leicester C
D Portsmouth	Millwall
E QPR	Bolton W
F Swindon T	Preston
G B'mouth	Plymouth
H Bristol R	Barrow
K Bury	Orient
L Doncaster	Gillingham
M Fulham	Rochdale
N Halifax T	Reading

THIRD LIST

A Shrewsbury	Walsall
B Southport	Tranmere
C Stockport	Bradford C
D Torquay U	Brighton
E Aldershot	Southend
F Colchester	Brentford
G Darlington	Crewe A
H Hartlepool	Lincoln C
K N'hampton	Grimsby T
L Oldham A	Chesterfld
M Peterboro	Exeter C
N Scunthorpe	Notts C



New 1970 range by Vauxhall

bearings by Skefko

SKF

The Skefko Ball Bearing Company Limited
Luton, Bedfordshire

BALL DONOR: MR SIDNEY SMITH

LUTON TOWN

Colours: Shirts White
Shorts Black

Coach: JIMMY ANDREWS

1
Sandy Davie

2
John Ryan

3
Freddie Jardine

4
Alan Slough

5
Terry Branston

6
John Moore

7
Malcolm Macdonald

9
Matt Tees

11
Mike Harrison

8
John Collins

10
Mike Keen

Sub: **Keith Allen**

Referee
I. P. JONES
(Treharris)

Linesmen
F. B. Handy (*Brownhills*)
Red flag
J. Helps (*Neath*)
Yellow flag



Sub: **Dorean McKenzie**

10
Dudley Roberts

8
John Stenson

11
Jimmy Goodfellow

9
Dai Jones

7
Malcolm Partridge

6
Phil Waller

5
Stuart Boam

4
John Quigley

3
Clive Walker

2
Sandy Pate

1
Graham Brown

Colours: Shirts Blue with Amber Trimmings
Shorts Blue with Amber Stripe

Manager: TOMMY EGGLESTONE

MANSFIELD TOWN

Result: LUTON TOWN

MANSFIELD TOWN