



# LUTON TOWN

## FOOTBALL CLUB

Telephone: Luton 23151



DIVISION III

# v BRADFORD CITY

Saturday 13 December 1969 Kick-off: 3.00 p m

Official Programme: Price 1/-



# FIXTURES 1969-70

## DIVISION THREE

Date	Opponents	Attendance	Result
<b>August</b>			
Sat 9	<b>BARROW</b>	12,080 (H)	3-0
Wed 13	FLC1 Peterboro'	10,249 (A)	1-1
Sat 16	Bournemouth	9,735 (A)	1-0
Tues 19	FLC1 <b>PETERBORO'</b>	13,105 (H)	5-2
Sat 23	<b>ORIENT</b>	13,761 (H)	3-2
Tues 26	<b>HALIFAX T.</b>	13,759 (H)	1-1
Sat 30	Gillingham	7,792 (A)	2-0

<b>September</b>			
Tues 2	FLC2 <b>MILLWALL</b>	17,372 (H)	2-2
Sat 6	<b>BRISTOL R.</b>	15,198 (H)	4-0
Mon 8	FLC2 Millwall	14,125 (A)	1-0
Sat 13	Bradford City	10,851 (A)	1-1
Tues 16	Southport	4,003 (A)	3-0
Sat 20	<b>SHREWSBURY</b>	15,396 (H)	2-2
Tues 23	FLC3 Sheffield U.	16,884 (A)	0-3
Sat 27	Plymouth Argyle	14,111 (A)	3-1
Tues 30	Walsall	7,557 (A)	3-1

<b>October</b>			
Sat 4	<b>STOCKPORT</b>	15,944 (H)	2-0
Tues 7	<b>BOURNEMOUTH</b>	18,065 (H)	0-0
Sat 11	Doncaster Rovers	17,380 (A)	0-2
Sat 18	Brighton & H.A.	18,722 (A)	2-1
Sat 25	<b>TORQUAY U.</b>	16,087 (H)	1-1

<b>November</b>			
Sat 1	Rotherham U.	8,727 (A)	1-1
Sat 8	<b>BARNSELEY</b>	17,442 (H)	1-1
Sat 15	FAC1 Bournemouth	7,362 (A)	1-1
Tues 18	FAC1 <b>BOURNEM'TH</b>	13,384 (H)	3-1
Sat 22	<b>ROCHDALE</b>	15,876 (H)	2-0
Tues 25	<b>FULHAM</b>	16,485 (H)	1-0

<b>December</b>			
Sat 6	FAC2 Hillingdon	9,333 (A)	1-2
Sat 13	<b>BRADFORD C.</b>	(H)	
Sat 20	Bristol Rovers	(A)	
Fri 26	Orient	(A)	
Sat 27	<b>GILLINGHAM</b>	(H)	

<b>1970</b>			
<b>January</b>			
Sat 3	<b>WALSALL (3)</b>	(H)	
Sat 10	Shrewsbury Town	(A)	
Sat 17	<b>PLYMOUTH A.</b>	(H)	
Sat 24	Bury (4)	(A)	
Sat 31	Stockport County	(A)	

<b>February</b>			
Sat 7	<b>DONCASTER (5)</b>	(H)	
Sat 14	Barrow	(A)	
Sat 21	Torquay United (6)	(A)	
Sat 28	<b>BRIGHTON</b>	(H)	

<b>March</b>			
Tues 3	<b>TRANMERE R.</b>	(H)	
Sat 7	Rochdale	(A)	
Wed 11	Reading	(A)	
Sat 14	<b>MANSFIELD (SF)</b>	(H)	
Tues 17	<b>BURY</b>	(H)	
Sat 21	Tranmere Rovers	(A)	
Fri 27	<b>ROTHERHAM U.</b>	(H)	
Sat 28	<b>READING</b>	(H)	
Mon 30			
Tues 31	Barnsley	(A)	

<b>April</b>			
Sat 4	Halifax Town	(A)	
Wed 8	Fulham	(A)	
Sat 11	FA Cup Final		
Tues 14	<b>SOUTHPORT</b>	(H)	
<b>To be re-arranged Mansfield</b>		(A)	

## FOOTBALL COMBINATION

Date	Opponents	Attendance	Result
<b>August</b>			
Sat 16	<b>PETERBORO'</b>	1,326 (H)	4-2
Sat 23	Norwich City	(A)	0-0
Sat 30	<b>TOTTENHAM H.</b>	1,683 (H)	2-2

<b>September</b>			
Sat 6	Gillingham	(A)	2-3
Sat 13	<b>BOURNEMOUTH</b>	1,124 (H)	3-3
Tues 23	Northampton Town	(A)	1-5
Sat 27	<b>SWINDON T.</b>	1,306 (H)	2-0

<b>October</b>			
Wed 1	Crystal Palace	(A)	1-2
Sat 11	<b>BIRMINGHAM</b>	1,309 (H)	1-2
Sat 25	Tottenham H. (Cup)	(A)	1-3

<b>November</b>			
Sat 1	<b>SOUTHAMPTON</b>	1,239 (H)	5-3
Tues 4	Queens Park Rangers	(A)	5-1
Sat 8	Leicester City	(A)	0-4
Sat 22			

<b>December</b>			
Sat 13	Bristol Rovers	(A)	
Tues 16	<b>BIRMINGHAM (Cup)</b>	(H)	
Sat 20	Arsenal	(A)	
Sat 27	Northampton (Cup)	(A)	
Tues 30	Walsall (Cup)	(A)	

<b>1970</b>			
<b>January</b>			
Sat 10	<b>CHELSEA</b>	(H)	
Sat 17	Plymouth Argyle	(A)	
Tues 20	<b>TOTTENHAM (Cup)</b>	(H)	
Sat 24	<b>READING</b>	(H)	
Tues 27	Birmingham (Cup)	(A)	
Sat 31	<b>NORTHAMPTON (Cup)</b>	(H)	

<b>February</b>			
Wed 4	Leicester City (Cup)	(A)	
Sat 7			
Sat 14	Fulham	(A)	
Sat 21	<b>SWANSEA T.</b>	(H)	
Wed 25	Cardiff City	(A)	
Sat 28			

<b>March</b>			
Sat 7	<b>OXFORD UNITED</b>	(H)	
Sat 14			
Sat 21	West Ham United	(A)	

<b>April</b>			
Sat 4	<b>BRISTOL C.</b>	(H)	

<b>To be re-arranged</b>			
<b>WALSALL (Cup)</b>	(H)		
<b>LEICESTER C (Cup)</b>	(H)		
Walsall	(A)		
<b>IPSWICH T</b>	(H)		

©Football League Ltd, 1969

Published by  
Luton Town Football and Athletic Company Limited,  
Kenilworth Road, Luton.

Printed by  
White Crescent Press Limited, Crescent Road, Luton.  
Telephone Luton 23122



# LUTON TOWN FOOTBALL AND ATHLETIC CO, LTD

KENILWORTH ROAD, LUTON, BEDFORDSHIRE  
TELEPHONE 0582 23151

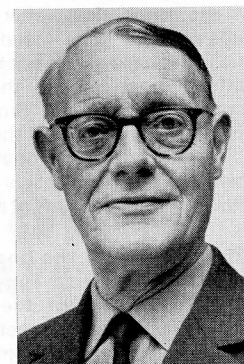
Established 1885 Incorporated 1897  
First Professional Side Season 1891-1892  
Football League Division III Champions 1936-37  
Football League Division II Runners-up 1954-55  
FA Challenge Cup Finalists 1958-59  
Football League Division IV Champions 1967-68

## OFFICIAL PROGRAMME 13 DECEMBER 1969

New Series  
Vol 1. No 17.

Directors: A. T. HUNT, *Chairman*, L. S. HAWKINS, *Vice-Chairman*,  
J. A. C. BAIN, R. I. BURR, T. HODGSON, H. RICHARDSON  
Chief Executive and Manager: Alec Stock Secretary: R. Readhead  
Hon Medical Officers: Dr C. J. Buckingham, MB, BS and  
Dr P. J. Burrows, MB, BCh, DOBst. RCOG  
Hon Dental Surgeon: A. Hargreaves, Esq  
Hon Solicitor: E. Waller, Esq Auditors: Messrs Keens, Shay, Keens & Co

*Eric Pugh's Page*



Various theories have been expressed for the shock exit of the Town from the FA Cup at Hillingdon last Saturday and, on the score that the past is past, and the future is far more important, I do not propose to enlarge on them, or to add fuel to the fire on this occasion.

Yet, the fact remains that this was a considerable let-down, particularly from the prestige point of view and, so far as recent history is concerned, it was only the second time that the Town have been given the KO by a non-League club.

## Corby did it too

For the previous one, we have to go back only three years when another Southern League team, Corby Town, came here and ended the Town's Cup hopes, again at the second round stage, by the only goal after a draw at Corby.

The memory of that disaster was soon erased, as will be the one of last Saturday, but, at the same time, it is difficult to assess the material cost both in terms of money and the confidence of the supporters.

## Should be the biggest gate

So far as the latter factor is concerned,

there will be some indication this afternoon by the size of the gate which, in view of the vastly important issues depending on the result, should be just about the biggest of the season.

Fortunately, from the Town's point of view, this Cup exit does not mean the end of the world because they are still the leading team in the Third Division and with a favourite's chance of gaining promotion this time.

## No serious challenge

While some of their recent results have not been exactly awe-inspiring, mainly because the goals have not been coming



with sufficient freedom, there has been no serious challenge to their supremacy.

For one thing, no team has emerged with anything approaching the consistent League record achieved by the Town, and the combination of recent results has tipped the scales firmly in their direction.

#### **Will regard it as conclusive proof**

However, there is little room, or time, for complacency and a considerable section of the fans will regard the result of today's match as conclusive proof of whether or not, last week's result indicated that the Town are tending to be on the downgrade.

Commonsense suggests to me that they are not, because no team can go through 40 League matches with only two defeats, as the Town have done, without having something out of the ordinary about it.

#### **Have a great chance**

At the same time, after the Hillingdon debacle, the fans need showing that this is the case and the team are presented with a great chance this afternoon to show that they have firmly pushed that disappointment behind them.

Nonetheless, no one should blame them if they approach this encounter with a certain amount of apprehension.

#### **They are one of the bogey teams**

As will be seen from Tony Pullein's page, the City are one of the Town's bogey teams and, in seven meetings with them, the Town have never come out on top.

Yet, they could have done at Valley Parade in September when they held the lead until 13 minutes from the end.

However, they learned enough on that occasion to know that the City are a vastly experienced, well-ordered team, who will not go down lightly.

That is why conclusive victory this afternoon would do so much to erase the blues that, at the moment, threaten to jeopardise the Christmas festivities of the intense loyalists among the supporters.

#### **Intense concentration**

Now, the call must be for intense concentration, fewer mistakes in defence and greater productivity in front of goal, especially as the period looming up could prove to be a most difficult one.

After today, there are difficult visits to Bristol and Orient and, if Walsall win their Cup replay with Brighton, only one of the next five League matches will be at home.

#### **Chance here of a double**

That will be a fortnight today when Gillingham, against whom the Town have a fine record of success in recent seasons, are the visitors and the opportunity to complete a double – the first leg having been won at Priestfield Stadium on August 30 – looms invitingly.

Gillingham, of course, can no longer call upon the services of the useful former Luton player, Gordon Riddick, who is now having some success as a striker with Charlton Athletic to whom he was sold for more than double the fee Gillingham paid Luton for him.

#### **Ronaldson had joined 'Gills'**

Another who has moved on is Carl Gilbert, who could be opposing the Town in the Bristol Rovers' colours next Saturday. In return, Gillingham have received Ken Ronaldson, who played well here for the Rovers earlier this season and is a talented inside-forward.

This, of course, is the last contact I shall have with the fans through this particular medium before the festive season, and I do wish them all a happy time and good watching in the games that follow and throughout the bright New Year of 1970.

May the Town gain the promotion prize which will make last Saturday's affair appear like some bad dream.

#### **OUR COVER PICTURE**

Famous comedian Eric Morecambe, a keen follower of the Town FC, presenting a cheque for £50 to Dave Pinion, secretary of the Chiltern Youth League, before the home match with Fulham.

In the middle is Max Faulkner, who received £50 on behalf of Luton Youth House. The donations resulted from the John White award scheme which was won by the Town for having the best behaved supporters during the period under review.

Town FC Vice-Chairman Len Hawkins, who is also President and Chairman of the Supporters' Club, is on the right.

(Picture – Home Counties Newspapers Ltd.)

# CONNELLS

Auctioneers, Surveyors  
Valuers and Estate Agents

*5, Upper George Street, Luton*

Telephone: 31261 for

## Houses and Bungalows

COUNTRY HOUSES, COMMERCIAL AND  
INDUSTRIAL PREMISES, COMPULSORY  
PURCHASE NEGOTIATIONS IN

*Luton and Surrounding Districts*

Branch Offices throughout  
HERTFORDSHIRE, BEDFORDSHIRE, BUCKINGHAMSHIRE  
and at 62, GROSVENOR STREET, LONDON, W.1.



## THE ONE STOP SHOPPING CENTRE for

Hardware, Electrical, Men's Wear, Fuel, Catering,  
Footwear, Bookshop, Drapery, Furnishing, Toys &  
Sports, Grocery, Greenfruit and Butchery with Credit  
Facilities to suit your requirements.

PLUS DIVIDEND STAMPS

### SUPERSTORE

4 NEW BEDFORD ROAD

LUTON. Tel: 21171

**LUTON CO-OPERATIVE SOCIETY LTD**





# From Bob's Office

Saturday dates are so precious this season that we cannot afford to waste one which is why we have made tentative arrangements for a League match on Saturday, January 3 should Walsall, who should be our visitors on that day, beat Brighton at their third attempt on Monday and thus qualify for a third round FA Cup-tie at Crystal Palace.

Following our unfortunate dismissal at Hillingdon, Reading who had a similar disappointment in the previous round at Brentwood, contacted us with the suggestion that we should bring forward our League match with them at Elm Park.

## Would ease things in March

As things stand at the moment, that is scheduled for Wednesday, March 11, and its transference would certainly ease our commitment in what is a particularly heavy month.

So, if Walsall win on Monday, we shall be at Reading three weeks from today. Otherwise, of course, the original fixture will stand. Should the answer be a visit to Reading, then Leicester City Reserves will be here for a re-arranged fixture.

## No Mansfield date as yet

So far, no decisive move has been made to re-arrange the visit to Mansfield which was postponed a fortnight ago because of snow and ice and it is unlikely that anything will be done until Mansfield have lost interest in the Cup.

In this respect, it is interesting to reveal that had we won at Hillingdon and the other results remained as they were, our opponents at Kenilworth Road in the third round would have been Barnsley, who visit Mansfield.

## Many knew the answers

Winners of the last two competitions have now been decided. Many people named Keith Allen as the second Football League player to score a hat-trick after coming on as substitute – he did it in the Cup against Ware last season.



Bob Readhead, Secretary

First correct solution to be picked out of the hat was that by Andrew Manning, 2 Brantwood Road, Luton, who wins a wrist watch.

Many were able to find six 'Tommy's' who had worn the Town colours and the first correct solution was that by D. G. Batchelor, 105 Selbourne Road, Luton, who also gets a watch. His answers were, Kiernan, McKechnie, Hare, King, Mackey, Hodgson.

## Tickets for match at Orient

Tickets are available at 9s each for our match with Orient at Leyton on the morning of Boxing Day (11.30) and supporters are advised to buy them quickly because there has been a brisk demand.

Why not give a season ticket as a Christmas present. These are now available at the reduced price of £6 10s. A decided advantage is that if Second Division football next season becomes an accomplished fact, as we hope, existing season-ticket holders will have first choice of seats.

## Please see page 15

For our new competition, please study the picture on page 15. We want as many names as possible of those in the group – accompanied by an entrance fee of sixpence, please.

Next Saturday, we have loaned our ground for the Individual Schools Final (under 15) between Sixth Form College and Halyard HS (kick-off 3 p m).

# The Vauxhall Breed's got style.







Back Row: K. Oliver, D. Atkins, B. Stowell, J. Roberts, T. Hallett, T. Leighton, I. Cooper.  
Front Row: R. Bayliss, J. Hall, B. Ham, J. Wheeler (Manager), N. Corner, C. Rackstraw, B. Bannister.  
(Picture by courtesy of Bradford & District Newspapers)

## CAN WE LAY THAT BRADFORD CITY BOGEY?

By Tony Pullein

Isn't it strange how some clubs seem to have a jinx on us? We've made seven attempts to beat Bradford City in League games but still haven't succeeded.

We almost made it at Valley Parade in September until a goal 13 minutes from time salvaged a point for City.

Naturally, we hope we can lay the bogey today and improve upon our sad looking record against them:

	P	W	D	L	For	Ag	P
Home	3	0	1	2	3	6	1
Away	4	0	2	2	4	7	2
	7	0	3	4	7	13	3

City, of course, have other ideas. Though they were promoted from the Fourth Division only last season, they are currently one of the strongest candidates for further promotion into Division II.

When one studies the experience in their side, it is not really surprising that they are doing so well.

Goalkeeper Pat Liney enjoyed a champagne period with Dundee. He got his first opportunity in 1959 and soon took over regularly between the sticks.

In 1961-62 he was ever-present when Dundee won the Scottish League championship for the only time in their history. Later he moved to St Mirren and Bradford P.A. before linking with City in 1967.

### Leighton back where he began

Since joining Bradford City in March 1968, Tony Leighton has reverted to the position he liked best as a youngster — wing-half.

It was here, and at full-back, that he tried to make his name with Leeds United. But he didn't succeed. He got his League chance at Doncaster and, though he played in every position except goal for them, he was still their top scorer in each of his three seasons there. Amazingly, they gave him a free transfer!

He moved to Barnsley, topped their pop-shots list for three years then shifted into Second Division soccer with Huddersfield. In 1966-67 he was their best marksman.

### Ham is a marksman

Bobby Ham, City's top scorer during last season's promotion campaign with 20 League and Cup goals, again leads the way with nine goals.

Though he didn't do much with Grimsby Town, Bobby soon found his form with Bradford Park Avenue, hitting 47 goals in 134 League games before he linked with City in 1968.

Norman Corner arrived from Lincoln City mid-way through last season. Earlier he had served Hull City, making only occasional appearances in the Tigers' first-team.

### Success with Carlisle

Peter McConnell, who joined City this season, surfaced into the League stream with Leeds United in 1958-59 but it was after moving up to Carlisle United that he really made headway.

He made well over 250 League appearances for Carlisle prior to his departure during the summer.

Tom Hallett, their centre-half, was another Leeds player who moved away (to Swindon Town) before returning to Yorkshire to sign for Bradford City in 1966. He has missed only a handful of games since.

### Nearly a double century

Right-back Denis Atkins joined Huddersfield's ground-staff in 1955, made his initial League appearance in 1959-60 and played himself firmly into the side, two seasons later.

He was only just short of his double century of League games for them when Huddersfield released him to Bradford City in 1967.

### Longest-serving player

City's longest-serving man is Bruce Stowell who has made over 300 first-team appearances since getting his chance in 1960.

Outside-right John Hall came in during 1962-63 and totals over 250 matches. Ian Cooper, the left-back, and Bruce Bannister were both introduced to the senior side in 1965-66. Peter Middleton is in his second season following his transfer from Sheffield Wednesday.

While maintaining their promotion

(Continued on page 11)



Luton's leading newsagents

# HOUGHTONS

CONFECTIONERS · TOBACCONISTS  
GREETINGS CARD SPECIALISTS

- ★ 16 The Parade, Hill Rise
- ★ 3 Ashwell Parade, Sundon Park
- ★ 82 Putteridge Road, Stopsley
- ★ 253 Birdsfoot Lane
- ★ 150 Sundon Park Road
- ★ Jansel House, Stopsley
- ★ 217 Dunstable Road
- ★ 178 Ashcroft Road, Stopsley
- ★ 8 Hillborough Crescent, Houghton Regis

*Whenever you are near  
— pay us a visit  
We will be pleased  
to serve you*

buy your  
**POST**  
with full-time  
results outside  
the ground  
after the match



## RICHARDSON and BOTTOMS

LIMITED

*Builders  
and  
Contractors*

107, BISCOT RD.  
Luton

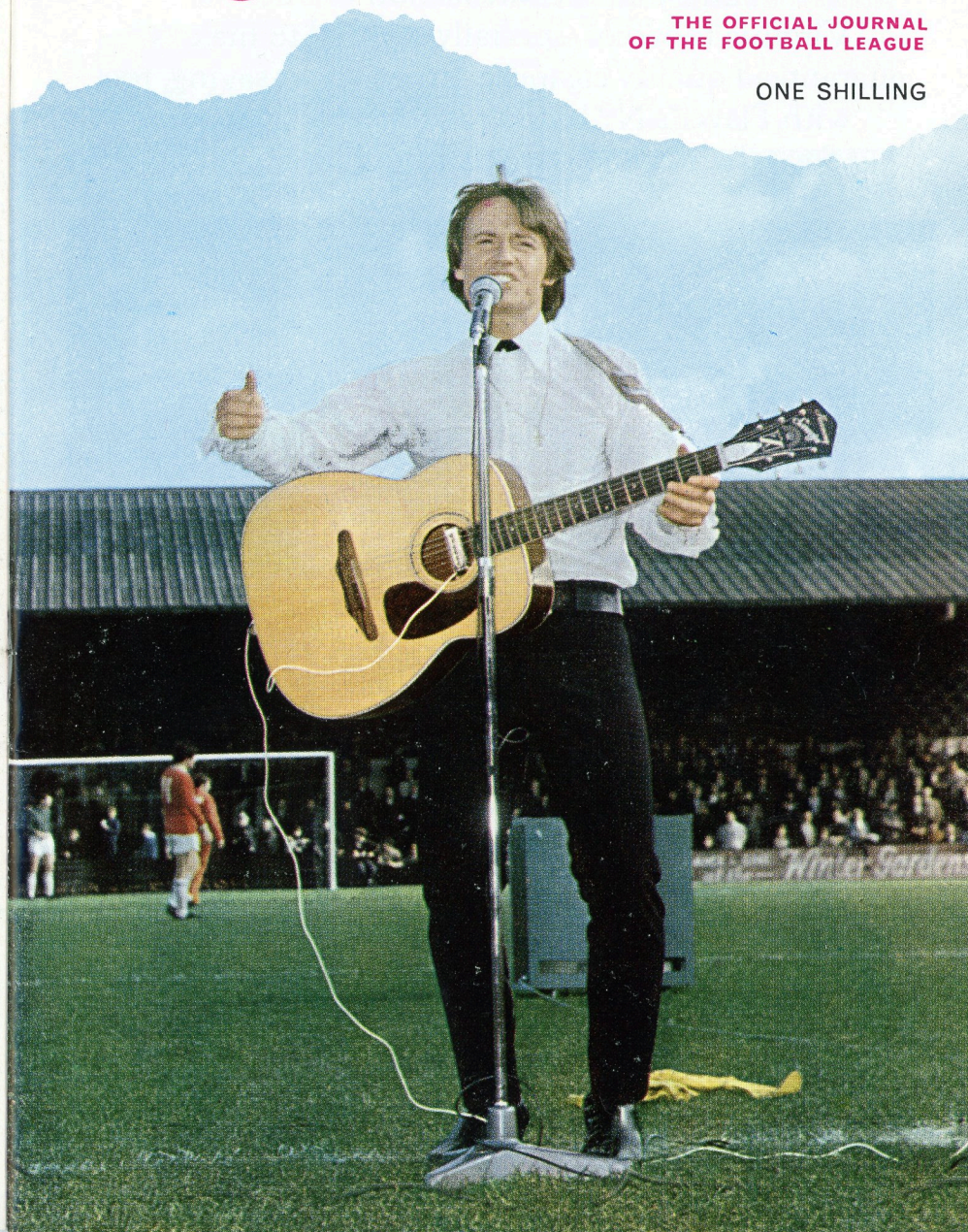
Telephone : 25628

# Football League Review



THE OFFICIAL JOURNAL  
OF THE FOOTBALL LEAGUE

ONE SHILLING

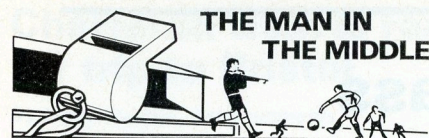




# No flannel- All Flavour



Round here  
that's what Park Drive  
means to us  
**Park Drive Flavour**



**THE MAN IN  
THE MIDDLE**

## **DANNY LYDEN (Birmingham)**

In six seasons as a League referee, **DANNY LYDEN** is now considered one of our top referees, getting appointments for First and Second Division games and important Third Division clashes such as today's.

He must be one of only a handful of referees to handle matches involving all 92 League clubs. 'I completed the set last season' he chuckled. In 1963-64 he was in charge of the Wales v. Scotland youth international.

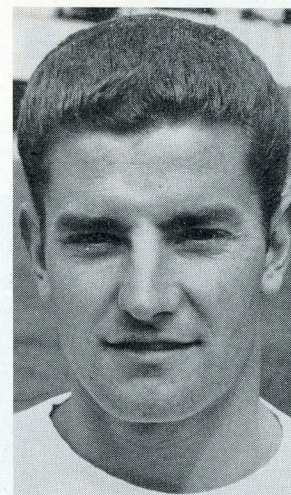
## **Amateur goalkeeper**

Danny Lyden played in goal for Walsall and Bradford City as an amateur and spent four years with Yorkshire Amateurs.

He took up refereeing at the age of 28 when he finished playing and worked his way up to the Football League referees' list in 1963 through the Birmingham Works FA and the West Midlands Regional League.

Employed in the service and spares department of a large machine tool company in Birmingham, Mr Lyden is married with a son and daughter.

Much of his spare time is devoted to youth work and, when relaxing, he enjoys nothing more than a spot of good music.



**No 16 MIKE HARRISON**

Is probably the most unlucky member of the playing staff, because he has been haunted by injuries since he joined the Town from Plymouth Argyle for a £7,000 fee during the summer before last.

Just as he has seemed to have established himself in the side, the old bogey has cropped up again, and it must be a matter of extreme frustration to him.

At his best, he is the fast, strong, direct winger the Town needed so badly and it is a matter of regret that his services have been unavailable so often.

Born in Ilford, he came to the fore with Chelsea, then moved to Blackburn Rovers in exchange for a big fee, after which came a spell with Plymouth.

Takes an interest in coaching and the Bedford Sunday League club, Amptill Queensmen, have benefited from his help in this respect.

*Tony Pullein continued from page 9*

challenge, Bradford City also enjoyed a good run in the Football League Cup, scoring a splendid 2-1 win over Sunderland on the First Division club's ground in the second round. They were eventually eliminated in the fourth round by West Bromwich who, last week, won their way to a record-breaking third appearance in the Final.

## **LATEST RESULTS**

### **DIVISION III**

#### **Luton Town 1 Fulham 0**

*Davie; Ryan, Bannister; Keen, Nicholl, Slough; French, Macdonald, Tees, Allen, Harrison. Sub: Collins.*

*Scorer: Macdonald.*

### **FA YOUTH CUP**

#### **Luton Town 4 Friern Barnet 1**

*Dalrymple; Hooper, Sage; Hipwell, Thompson, Tuffs; Lee (Garforth), Hines, Sorbie, Sparkes, Adair.*

*Scorers: Tuffs (2), Sorbie, Adair.*

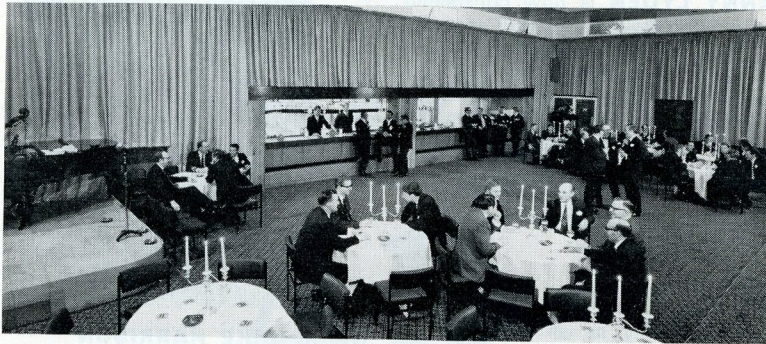
### **FA CUP 2nd ROUND**

#### **Hillingdon Boro' 2 Luton Town 1**

*Davie; Ryan, Bannister; Keen, Nicholl, Slough; Collins, Macdonald (Harrison), Tees, Allen, French. Scorer: Tees.*



# Two in a class of their own



Comfort for all manner of functions – that is the motto of the new, luxurious Hatters' Club which has proved so popular.

Today, the club is open until 2.55 p.m. for drinks and snacks and re-opens from 4.45 to 5.40 p.m. and then continuously from 6 o'clock until 11.40 p.m.

## The New Sports Centre



Our new Sports Centre at 231 Dunstable Road which offers a comprehensive list of sports goods, toys and games at competitive prices. Get your Christmas presents here!

## Chartered train is ready for trip to Bristol

By Harry Haslam, *Entertainments Manager*

There is no doubt that one of the most successful ventures undertaken by the club in recent years has been the chartering of special trains for away matches.

This mode of transport has proved to be economical and cheap and, so far, the various trains we have run, which have now carried supporters running into thousands, have gone through without incident.

### Train booked for Bristol

Last Saturday, there was a capacity turnout for the train to Hillingdon which carried 692 of the loyalists and the next venture, and the last of the New Year, comes a fortnight today when we have a train, capacity 486 seats, going to Bristol for the match with the Rovers.

Fare will be £1 return and the times are as follows:

Depart Luton 10.22  
arrive Harpenden 10.31  
arrive St. Albans 10.40  
arrive Bristol 1.15

Depart Bristol 5.30  
arrive St. Albans 8.18  
arrive Harpenden 8.28  
arrive Luton 8.30

Tickets are available for sale at the Luton Sports Centre, 231 Dunstable Road, Luton.

### Christmas functions

Two functions at the Hatters Club have been arranged for the week preceding Christmas. On 23 December, there will be a Luton Town Festive Dance from 8 p.m. to 12.30 a.m., with bar extension and light refreshments available. Dancing will be to the Viktor Fether Group.

On the following evening, Christmas Eve, there will be dancing to Tommy Thompson and his band from 7.30 to 12.30 a.m. again with bar extension, and there will be novelties and spot prizes. Tickets for both these events will be 5s each, obtainable from the Sports Centre and the Hatters' Club.

Arrangements are in hand for a New Year's Eve dinner dance at the Hatters' Club, but arrangements have yet to be finalised.



### SUPPORTER OF THE WEEK

CHRIS BARLOW, of 7 Hadrian Close, Lillington, Leamington Spa, has been nominated and rightly so, because he travels 130 miles for each home game, and goes to all away matches, unless he happens to be abroad on business.

Has supported the Town since 1954 and, at home games, stands in the enclosure with his mates from Southill, Broom and Shefford. His wife and daughter, Louise, travel with him.

### TODAY'S MASCOT

Trevor Coote, of 13 Florence Avenue, Sundon Park, Luton, aged 7. Give him a cheer.

### LUTON TOWN FC POOL

#### THIS WEEK'S LUCKY NUMBERS

**Saturday:** £20-31962; £15-14383; £5-01505; £5-26949; £2-49581; £2-28802; £1-27164.  
**Monday:** £20-22502; £15-45724; £5-37019; £5-19112; £2-36272; £2-05209; £1-08351.  
**Tuesday:** £20-13657; £15-04970; £5-23512; £5-35673; £2-12138; £2-30884; £1-42916.  
**Wednesday:** £20-29701; £15-32356; £5-39199; £5-03612; £2-47219; £2-21038; £1-06718.  
**Thursday:** £20-10266; £15-15598; £5-31002; £5-16087; £2-18564; £2-02347; £1-44313.  
**Friday:** £20-07103; £15-46481; £5-25238; £5-40175; £2-34861; £2-16752; £1-38427.

### BONANZA WINNERS – Fulham match

0247 Mr Graham Jones, 7 Brownsfield Road, Yardley Gobion, Northants. £6 6s.  
3022 Mr Brunswick, 36 Cutenhoe Road, Luton. 'Goal' transistor radio.  
3507 Mr White, 2 Fish Close, Stevenage. 'Goal' transistor radio.  
3851 Mr Chadwick, 26 Clifford Crescent, Luton. Odeon Cinema ticket.  
1435 Unclaimed. Odeon Cinema ticket.



## Coming Matches

### FOOTBALL COMBINATION CUP

TUESDAY, 16 DECEMBER

## LUTON TOWN v BIRMINGHAM CITY

KICK-OFF 7.30 p.m.

Prices of admission: Enclosure 2s 6d  
(Children 1s 6d), Stand seats 6d extra.

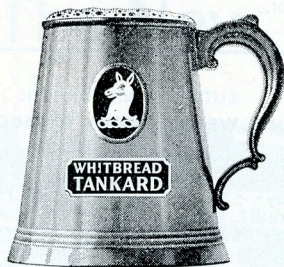
### DIVISION III

SATURDAY, 27 DECEMBER

## LUTON TOWN v GILLINGHAM

KICK-OFF 3 p.m.

Prices of admission: Centre Stand 10s,  
Wing Stand 8s, Enclosure, Bobbers'  
Stand and Oak Road Terrace 6s (Children  
3s), Kenilworth Road Terrace 5s (Children  
2s 6d).



**WHITBREAD  
TANKARD**  
cool,  
clear, refreshing

Available in all Bars

## NEWS FROM THE SUPPORTERS' CLUB

By FRANK SHEPHERD

Although the result of the Cup game was a disappointment to us, it is by no means the end of the world. To us, progress up the League is of far more importance and we, as supporters, want Second Division football here next season.

Apart from watching the game, supporters are fanatical readers of anything to do with the sport. There are many weekly and monthly publications in circulation and we draw your attention to the new one, *The Football Supporter*, a monthly that is the official journal of the National Federation of Supporters' Clubs.

### Get a copy now

It is now considered to be one of the best on sale and copies can be obtained from the Supporters' shops today.

This is the last home match before Christmas, so why not pay us a visit at the shops to obtain gifts for your friends, such as ties at 17s 6d, badges 3s, books and annuals, some at reduced prices.

Today, we welcome our friends from the Bradford City Supporters' Club and hope we shall see them socially later.

## HOW THEY STAND

### DIVISION III

	P	W	D	L	F	A	P
<b>LUTON TOWN</b>	<b>20</b>	<b>12</b>	<b>7</b>	<b>1</b>	<b>36</b>	<b>14</b>	<b>31</b>
Bradford City	21	12	5	4	28	14	29
Rochdale	22	13	3	6	46	31	29
Torquay	23	9	10	4	35	20	28
Orient	20	10	7	3	28	14	27
Barnsley	21	10	7	4	29	20	27
Doncaster Rovers	20	10	5	5	25	17	25
Bristol Rovers	21	9	7	5	38	29	25
Bury	21	9	3	9	38	37	21
Mansfield Town	21	8	5	8	22	22	21
Brighton	21	8	5	8	24	25	21
Reading	21	8	5	8	33	37	21
Shrewsbury	21	5	10	6	26	30	20
Walsall	21	8	4	9	25	32	20
Halifax	20	7	6	7	17	24	20
Fulham	20	6	7	7	36	30	19
Tranmere	21	7	5	9	31	37	19

## THIS WEEK'S COMPETITION

Here is a picture of the Town FC taken during the early 1930s. How many of these can you name?

Entries must be accompanied by a fee of sixpence and a ladies' or gents' wrist watch will be awarded to the sender of the first correct solution.



## HALF TIME SCORES

### FIRST LIST

<b>A</b> Arsenal	.....	Burnley	.....
<b>B</b> Crystal P	.....	Coventry	.....
<b>C</b> Derby C	.....	Newcastle	.....
<b>D</b> Ipswich T	.....	West Brom	.....
<b>E</b> Leeds U	.....	Sheff W	.....
<b>F</b> Liverpool	.....	Man U	.....
<b>G</b> Man C	.....	Spurs	.....
<b>H</b> Soton	.....	Notts F	.....
<b>K</b> Sunderland	.....	Stoke C	.....
<b>L</b> West Ham	.....	Everton	.....
<b>M</b> Wolves	.....	Chelsea	.....
<b>N</b> A Villa	.....	Watford	.....

### SECOND LIST

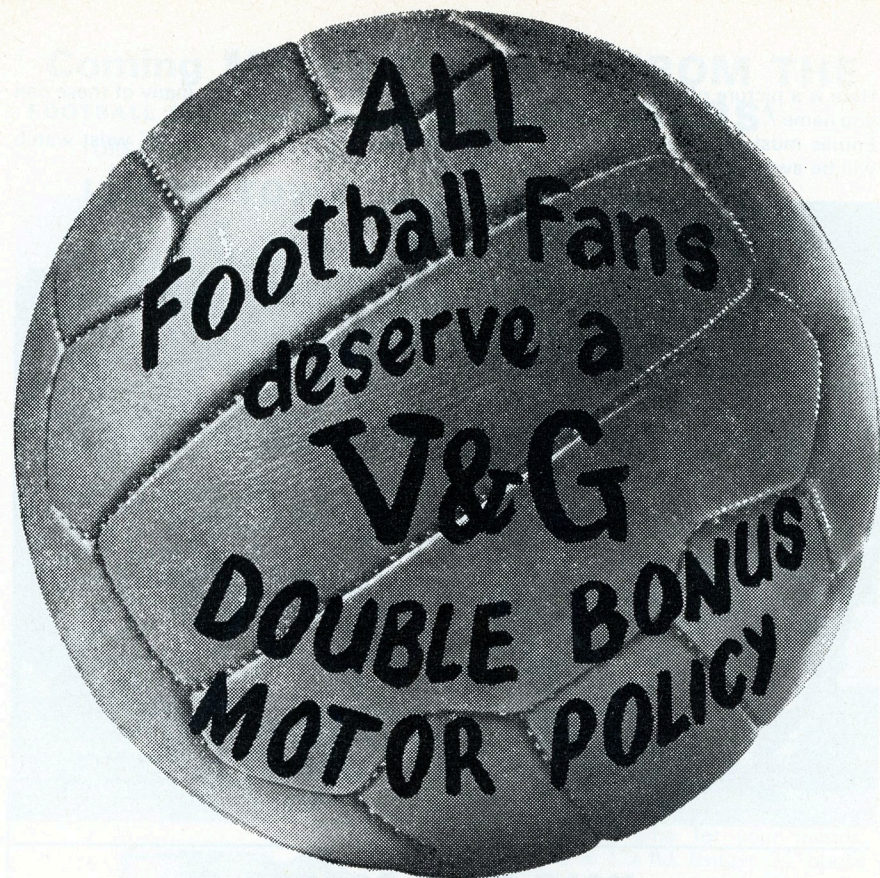
<b>A</b> Blackburn	.....	Preston	.....
<b>B</b> Blackpool	.....	Hudders'ld	.....
<b>C</b> Bolton W	.....	Hull C	.....
<b>D</b> Bristol C	.....	Middlesbro	.....
<b>E</b> Carlisle U	.....	Millwall	.....
<b>F</b> Charlton	.....	Norwich C	.....

<b>G</b> Leicester C	.....	Cardiff C	.....
<b>H</b> Oxford U	.....	Swindon	.....
<b>K</b> QPR	.....	Portsmouth	.....
<b>L</b> Sheff U	.....	Birmingham	.....
<b>M</b> Barnsley	.....	Bury	.....
<b>N</b> Brighton	.....	Orient	.....

### THIRD LIST

<b>A</b> Fulham	.....	Bristol R	.....
<b>B</b> Halifax T	.....	Plymouth	.....
<b>C</b> Mansfield	.....	Barrow	.....
<b>D</b> Reading	.....	Stockport	.....
<b>E</b> Rochdale	.....	Gillingham	.....
<b>F</b> Rotherham	.....	Walsall	.....
<b>G</b> Southport	.....	Shrewsbury	.....
<b>H</b> Torquay U	.....	Bourn'mth	.....
<b>K</b> Tranmere	.....	Doncaster	.....
<b>L</b> Bradford C	.....	York C	.....
<b>M</b> Crewe A	.....	Colchester	.....
<b>N</b> Bristol R Res	.....	Luton Res	.....





## THE V&G DOUBLE BONUS MOTOR INSURANCE POLICY GIVES FAIRER TERMS TO EVERY DRIVER

For further information contact your local officially appointed V & G Insurance Broker, or write or phone the address below.

## V&G THE VEHICLE & GENERAL GROUP OF INSURANCE COMPANIES

Group Headquarters,  
Administration & Operations;  
Bushey House,  
High Street, Bushey,  
Hertfordshire.  
Tel: 01-950 4311.

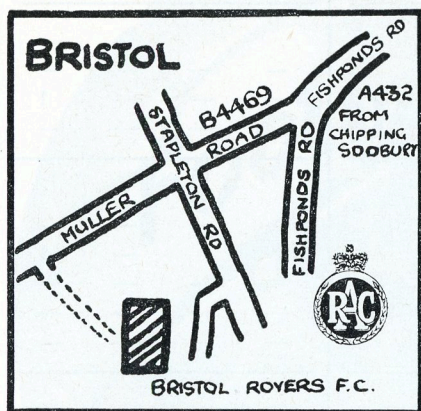
THE VEHICLE & GENERAL INSURANCE CO. LTD.  
LIFE, CASUALTY & GENERAL INSURANCE CO. LTD.  
AUTOMOBILE & GENERAL INSURANCE CO. LTD.  
THE GENERAL & COMMERCIAL MOTOR INSURANCE CO. LTD.  
METROPOLITAN GENERAL INSURANCE CO. LTD.  
WORLD AUXILIARY INSURANCE CORPORATION LTD.  
PIONEER LIFE ASSURANCE CO. LTD.

	APPEARANCES				GOALS			
	FL	FAC	FLC	FC	FL	FAC	FLC	FC
<i>Goalkeepers</i>								
DAVIE, A.	13	3	2	3	—	—	—	—
READ, A.	6	—	3	7	—	—	—	1
STARLING, A.	—	—	—	5	—	—	—	—
<i>Full Backs</i>								
BANNISTER, J.	19	3	5	—	—	—	—	—
DOUGAN, M.	6	—	3	4	—	—	—	1
HOOPER, G.	—	—	—	9	—	—	—	—
JARDINE, F.	5	1	—	11	—	—	—	—
RYAN, J.	9	3	2	7	—	—	—	—
<i>Half Backs</i>								
BRANSTON, T.	5	2	5	7	—	—	1	—
KEEN, M.	19	3	5	—	1	—	—	—
GUILD, A.	—	—	—	13	—	—	—	3
MOORE, J.	2	—	1	12	—	—	—	—
NICHOLL, C.	13	1	—	1	2	—	—	—
SLOUGH, A.	18	3	5	—	1	—	—	—
THOMPSON, P.	—	—	—	—	—	—	—	—
WAINWRIGHT, R.	—	—	—	12	—	—	—	—
<i>Forwards</i>								
ALLEN, K.	19	3	5	—	5	—	2	—
COLLINS, J.	18	3	3	1	8	2	—	—
FRENCH, G.	19	3	5	—	3	—	—	—
HARRISON, M.	2	1	—	10	—	—	—	2
LEWIS, B.	5	—	2	5	—	—	2	3
MacDONALD, M.	19	3	5	1	8	1	2	3
PHILLIPS, P.	—	—	—	13	—	—	—	8
SHEFFIELD, L.	6	—	5	6	—	—	2	4
STEVENSON, M.	—	—	—	7	—	—	—	2
TEES, M.	15	3	1	—	6	2	—	—
SPARKES, N.	—	—	—	2	—	—	—	—
TUFFS, R.	—	—	—	1	—	—	—	—
ADAIR, K.	—	—	—	—	—	—	—	—
LEE, R.	—	—	—	3	—	—	—	—
HIPWELL, R.	—	—	—	7	—	—	—	—
FOSSEY, P.	—	—	—	8	—	—	—	1
SORBIE, R.	—	—	—	3	—	—	—	—
OPPONENT	—	—	—	—	1	—	—	—

FL — Football League; FAC — FA Cup; FLC — Football League Cup; FC — Football Combination



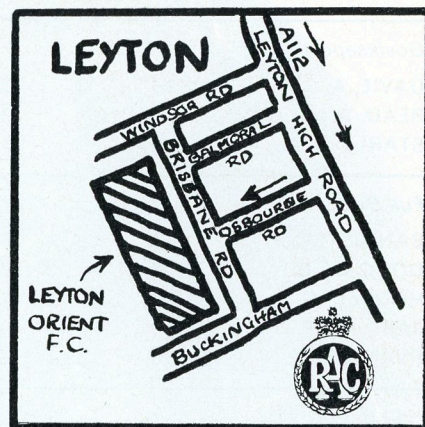
## How to get there



### BRISTOL ROVERS

v LUTON TOWN

SATURDAY 20 DECEMBER



### ORIENT

v LUTON TOWN

FRIDAY 26 DECEMBER

LUTON  
Leave by A505 as for Dunstable.  
DUNSTABLE 5 miles  
Continue ahead along B489,  
at 6 miles on, turn R  
IVINGHOE 11 miles  
Continue along B489  
At 5 miles on, turn R onto A41  
AYLESBURY 19 miles  
Join A418 as signed 'Thame and  
Oxford'  
THAME 29 miles  
At 6 miles on, join A40 as signed  
'Oxford'  
OXFORD BY-PASS 40 miles  
WITNEY 52 miles  
Traffic lights, bear R  
BURFORD 60 miles  
Roundabout, continue ahead.  
At 2m on, turn L onto A433  
BIBURY 70 miles  
CIRENCESTER 77 miles  
TETBURY 87 miles  
At 8m on, bear L joining A46,  
then 5m further at traffic lights,  
turn R onto A432  
CHIPPING SODBURY 100 miles  
BRISTOL 110 miles  
(See plan)

LUTON  
Leave by M1 Motorway as for  
London.  
Junction with M10 10 miles  
Bear L.  
End of Motorway 13 miles  
Follow signs 'Barnet A405'  
At 2m. on, follow signs  
'London A6' and 4m. further  
Turn L as signed  
'Potters Bar'  
Potters Bar, A111 22 miles  
Southgate 27 miles  
North Circular Road 29 miles  
Roundabout, take 2nd exit  
A406 Follow to:  
'Crooket Billet' P.H. 33 miles  
(Roundabout).  
Take 3rd exit along  
Chingford Road (A112)  
'The Bell' P.H. 34 miles  
Hoe Street Station 34½ miles  
At ½m. on, continue into  
Leyton High Road.  
At 1m. Turn R. into Osborne Road  
for:  
ORIENT FOOTBALL CLUB. 36 miles  
(See Plan).



New 1970 range by Vauxhall

bearings by Skefko

# SKF

*The Skefko Ball Bearing Company Limited  
Luton, Bedfordshire*



**BALL DONOR:** MR COOTE, 13 FLORENCE AVENUE, SUNDON PARK

# LUTON TOWN

Colours: Shirts White  
Shorts Black

*Coach:* JIMMY ANDREWS

1  
**Sandy Davie**

2  
**John Ryan**

3  
**Jack Bannister**

4  
**Mike Keen**  
*Captain*

5  
**Chris Nicholl**

6  
**Alan Slough**

7  
**John Collins**

9  
**Matt Tees**

11  
**Graham French**

8  
**Malcolm Macdonald**

10  
**Keith Allen**

Sub: **Mike Harrison**

Referee  
D. J. LYDEN  
(*Birmingham*)



Linesmen  
A. W. GREY (*Gorleston-on-Sea*)  
Red flag  
J. H. JACKSON (*Ramsey, Hunts*)  
Yellow flag

Sub: **Ron Bayliss**

10  
**Bruce Bannister**

8  
**Bobby Ham**

11  
**Peter Middleton**

9  
**Norman Corner**

7  
**John Hall**

6  
**Peter McConnell**

5  
**Tony Leighton**

4  
**Bruce Stowell**

3  
**Ian Cooper**

2  
**Denis Atkins**

1  
**Pat Liney**

Colours: Shirts Claret and Amber stripes  
Shorts Black

*Manager:* JIMMY WHEELER

# BRADFORD CITY

Result: LUTON TOWN

BRADFORD CITY