

## MY DAD'S A CAR OWNER NOT A CAR-WASHER

He's served by the second largest car wash in Britain.  
With the new improved car wash formula that safeguards  
his car — his property.

Minis 8/6      All in four minutes!      Saloons 10/6

Go today to:

**RIVIERA AUTOMATIC CAR WASH CO. LTD.**

Summer opening: 9-6 Weekdays, 9-1 Sundays  
**41 ALEXANDRA STREET, SOUTHEND-ON-SEA**  
TELEPHONE 42741



FOOTBALL LEAGUE DIV. 4

## Southend United v. Luton Town

No. 23

MONDAY, APRIL 24th, 1967

K.O. 7.30 p.m.

## Official Programme 6d.



AUSTIN - MORRIS - M.G. - WOLSELEY - RILEY - VANDEN PLAS  
**NO NEED TO LOOK BEYOND B.M.C. FOR VALUE**



Call in and test drive the car of  
your choice. All models in stock.  
648/656 London Road, Westcliff-on-Sea

**SMAC**  
SOUTHERN MOTOR & AERO CO. LTD.

Station Road, Thorpe Bay - Southernhay, Basildon



## STANFORDS

BUILDERS' MERCHANTS

FOR: BATHROOMS - FITTED KITCHENS - CENTRAL HEATING -  
FIRE SURROUNDS and all Building and Plumbing Requisites

547/551 LONDON ROAD, WESTCLIFF-ON-SEA

Tel.: 48555

Customers Car Park Available

# COTGROVES

*wish the club a successful season*

## Restaurant & Grill Room

at 18 High Street, Southend-on-Sea

telephone 68197 for a reservation

★ licensed

## HODGES & JOHNSON

For Complete Home Entertainment

★

126 HAMLET COURT ROAD, WESTCLIFF-ON-SEA, ESSEX  
Telephone: Southend 42840

37-43 BROADWAY WEST, LEIGH-ON-SEA, ESSEX  
Telephone: Southend 72227-8

19 RECTORY GROVE, LEIGH-ON-SEA, ESSEX  
Telephone: Southend 72227-8

★ SPECIALISTS IN PIANOS, ORGANS AND  
TELEVISION

## Southend United Football Club Ltd.

ROOTS HALL FOOTBALL GROUND,  
VICTORIA AVENUE, PRITTLEWELL  
Telephone: Southend 40707

President: C. O. BENSON (E.C.F.A.)

Vice-President: MAJOR A. I. HAY, M.B.E.

Directors: STANLEY F. W. SKINNER, F.R.I.C.S., F.A.I. (Chairman); W. W. RUBIN,  
(Vice-Chairman); NELSON L. MITCHELL; PHILIP H. LEWIS; JAMESON R.  
BATES; BRIAN H. LEWIS.

General Manager: ALVAN WILLIAMS

Assistant Manager: ERNEST SHEPHERD

Secretary: JOHN RANGLES

Hon. Medical Officer: DR. A. H. LEVERS

### From the General Manager's Office

These notes are written before the result of the Barrow game which will of course have a vital bearing on promotion.

Surely the wonderful finish to the season in this Division boosts the argument of four up and four down throughout the Leagues. With five games of the season left seven teams are involved in this thrilling finale.

Tonight's visitors are Luton Town who defeated us last week due to one of goalkeeper Trevor Roberts' few mistakes this season which unfortunately cost us a valuable point. However, the team will be out for revenge this evening and to add another couple of points to their tally.

Keep your vocal encouragement going which is needed more now than at any time this season.

UP THE BLUES, ALVAN WILLIAMS.

**Page One Picture:** Chesterfield defenders have that beaten look as Ray Smith (out of picture) nets the second of Southend's four goals last week. (Picture by courtesy of Southend News Review).

## FIRST WITH THE WEEK-END SPORT ! COVERING UNITED HOME AND AWAY SOUTHEND and DISTRICT NEWS REVIEW

EVERY WEDNESDAY

— THREEPENCE



## Pen Pictures . . .

**GRAHAM FRENCH.** Winger. Born at Wolverhampton, Graham came into prominence when playing for Shrewsbury and whilst with them he gained Youth International caps for England. Later he played for Swindon and Watford, before joining Luton in October, 1965. Can play on either wing.

**FREDDIE JARDINE.** Full Back. Although born in Edinburgh, he played for 2 seasons for Dundee before coming South to Luton in 1961. Was signed as an Outside Left but has since made the Left Back position his own.

**BRIAN JOHNSON.** Winger. Born at Newcastle. His only other Club was Sunderland from whom he scored his transfer in July, 1966. He also appeared in the F.A. Youth Cup Final in the same team as Terrence Adamson.

**GERALD KING.** Winger. A Welshman by Birth, he played for his Country both as a Schoolboy and at Youth International level. Has played for Cardiff and Torquay, from whom he was transferred in June, 1966.

**JOHN MOORE.** Wing Half. In his second season for Luton. Previously played for Motherwell. Made 43 League appearances and scored 5 goals last season which can be said to be a satisfactory baptism into English football.

**TONY READ.** Goal Keeper. Born at Haydock, his first club was Sheffield Wednesday, and in 1964 he left them to go to Peterborough. Was then transferred from there to Luton in March 1965 to show his versatility, he last season made 35 appearances in the forward line scoring 12 goals besides 6 appearances in goal.

**GORDON RIDDICK.** Inside Forward. Turned Professional in April 1961 following a short period of Apprenticeship. He has been with this Club since this date making many first team appearances equally well at Full Back, Half Back and as a Forward. He was born at Langlebury.

**BRUCE RIOCH.** Inside Forward. Although Born at Aldershot he was brought up in Luton and represented the Town at School also having trials for the England School-Boys Team. He signed Apprentice Professional in August, 1963 and full Professional in September 1964. Made 21 League appearances last season.

**ALAN RIVERS.** Half Back. Born at Portsmouth he signed Professional forms for this Club in January 1964, after playing three years for us as an Amateur. He is a very well built lad who can also play with success at Centre Forward.

**TONY THEAR.** Centre Forward. He was born at Tottenham and joined their neighbours Arsenal as Apprentice Professional. He can also play at Centre Half and whilst at Highbury his appearances were divided between these two positions. He holds an F.A. Youth Cup winners medal having been on the opposing side in the Final last season against Terrence Adamson and Brian Johnson of Sunderland now on Luton's books.

**BOBBY THOMSON.** Full Back. Born at Menstrie in Scotland. He first came into prominence with Partick Thistle, and was later transferred to Liverpool for a big fee. Luton secured his services from the latter Club on the 2nd August, 1965.

**RAY WHITTAKER.** Outside Left. A Londoner from Bow, his only other Club being the Arsenal. He gained England Youth International Caps in 1962 and 1963 and when we were in need of a left wing he was persuaded to join us in March, 1964. He went straight into the First Team and held his place ever since.

## Forthcoming Matches at Roots Hall . . .

**TUESDAY, 25th APRIL, 1967:**

London Mid-Week League

**LUTON TOWN** — Kick-off 7.30 p.m.

**WEDNESDAY, 26th APRIL, 1967:**

London Mid-Week League

**WATFORD** — Kick-off 7.30 p.m.

**SATURDAY, 30th APRIL, 1967:**

Football League

**ROCHDALE** — Kick-off 3.00 p.m.

## FRANK WALTON & CO.

INSURANCE BROKERS

226 WEST ROAD, SOUTHEND-ON-SEA, ESSEX Telephone: Southend 46251

For confidential advice or keenest quotations.

60% No Claim Bonus—Motor      25% Reductions—Shops, Houses, Hotels,  
Employers Liability.      Pension Schemes      Endowment Annuities

SERVICE AND SECURITY

## WINTER SUNSHINE HOLIDAY THIS YEAR!

### Mediterranean Holidays

Offer you 15 days from

**£37.10s.**

In the sunshine resorts of  
**SOUTHERN SPAIN and  
MAJORCA**

flying 'Golden Prop-Jet'

with

*Channel  
Airways*

**DIRECT FROM SOUTHEND**



**POST THIS TODAY!**

To:  
**Mediterranean Holidays  
Ltd.,  
Airways House,  
95 Southchurch Road,  
Southend-on-Sea,  
Essex.**

Please send me full colour brochure on Mediterranean Holidays in the sun this winter.

NAME .....

ADDRESS .....

## WHITE HEATHER GARAGE

179 KILN ROAD, THUNDERSLEY, BENFLEET, ESSEX

Phone: Southend 558428

*For all your Motoring Needs*

Guaranteed Used Cars - Panel Beating & Recellulosing

Repairs - Servicing - Complete Overhauls



## The County Boro' Group

County Borough Builders Supply Co. Ltd. Tel.: Southend 78296  
Brush Bros. Transport Ltd. Tel.: Southend 78296  
Mells Asphalt Co. Ltd. Tel.: Southend 78298  
Offices: 94-96 RECTORY GROVE, LEIGH-ON-SEA, ESSEX

### BUILDERS' MERCHANTS - ROOFING CONTRACTORS

*Asphalting, Lino and Vinyl Decorative Floor Tiling, Asbestos Roofing  
Suspend Ceilings, Ceramic Wall and Floor Tiling  
Asbestos, Ballast, Lime, Pipes, Plaster, Sand, Tiles, etc.*

Depots: 164-166 Glendale Gardens, Leigh-on-Sea; 259 Church Road, Thundersley

## B. R. S. Parcels Limited

Serve *TRADE, INDUSTRY* and *HOUSEHOLDERS* in this Area with a  
**COUNTRYWIDE PARCELS SERVICE**

*Special facilities for shipping traffic, air freight, Continental parcels, luggage*

For details please contact The Branch Manager,  
B.R.S. Parcels Ltd., 4 Grainger Road, Southend, Essex  
Telephones 67100 and 65836

Telephone: SOUTHEND 44183

## GOWING BROS.

*Builders & Contractors*  
**643B LONDON ROAD,  
WESTCLIFF-ON-SEA, ESSEX**

# MEAKERS

## FOR THE WELL DRESSED MAN!

**164 HIGH STREET - SOUTHEND**

## Supporters' Club Notes

# CLIFFS BAND STAGE

SUNDAY AFTERNOONS, 3 p.m.

April 30th. May 7th, 14th, 21st.

## Southend United Supporters Club

# BAND

## Supporters' Shrimpers Social Club

(under "C" Block, East Stand)

Membership available to Ladies and Gentlemen

Ten Shillings per annum

Membership Forms available from Supporters' Club Offices at  
Roots Hall and 57 London Road, Southend.

Established over 60 years

## J. THORNBACK & SONS Ltd.

Office and Works—Phone: Southend 67176

*Tarpaving Contractors*

Contractors to Southend Corporation, Essex County Council, British Rail,  
etc. ALL ESTIMATES FREE. For Tennis Hard Courts, Roads, Footpaths,  
Driveways, Car Parks, etc.

**Tarmacadam Works, Priory Avenue, Prittlewell**  
Registered Office: Priory Avenue, Southend-on-Sea



Wholesale and Retail  
Distributors of Used Cars  
and Vans

**BENJAY**  
Auto Sales Ltd.

422 LONDON ROAD  
WESTCLIFF  
(near The Plough)

Phone: Southend 40417

# LIDDIARDS

ALL MAKES OF  
PRAMS — CYCLES — TOYS  
TOY TRAINS  
AND  
ELECTRIC RACING GAMES

300/304 VICTORIA AVENUE  
PRITTLEWELL  
SOUTHEND-ON-SEA

PRITTLEWELL'S LARGEST STORE

Established over 60 years

Phone: 66472

SOUTHEND 63018

BYCEL METALS

CASH BUYERS OF  
NON-FERROUS METALS

107 SOUTHCHURCH AVENUE  
SOUTHEND-ON-SEA

## MOSPORT

ACCESSORIES LTD.



Southend's Specialists  
in all Racing, Rally  
and Speed Equipment



We also stock a  
complete range of  
general accessories for  
the car and driver



Let us help you with  
all your  
motoring problems



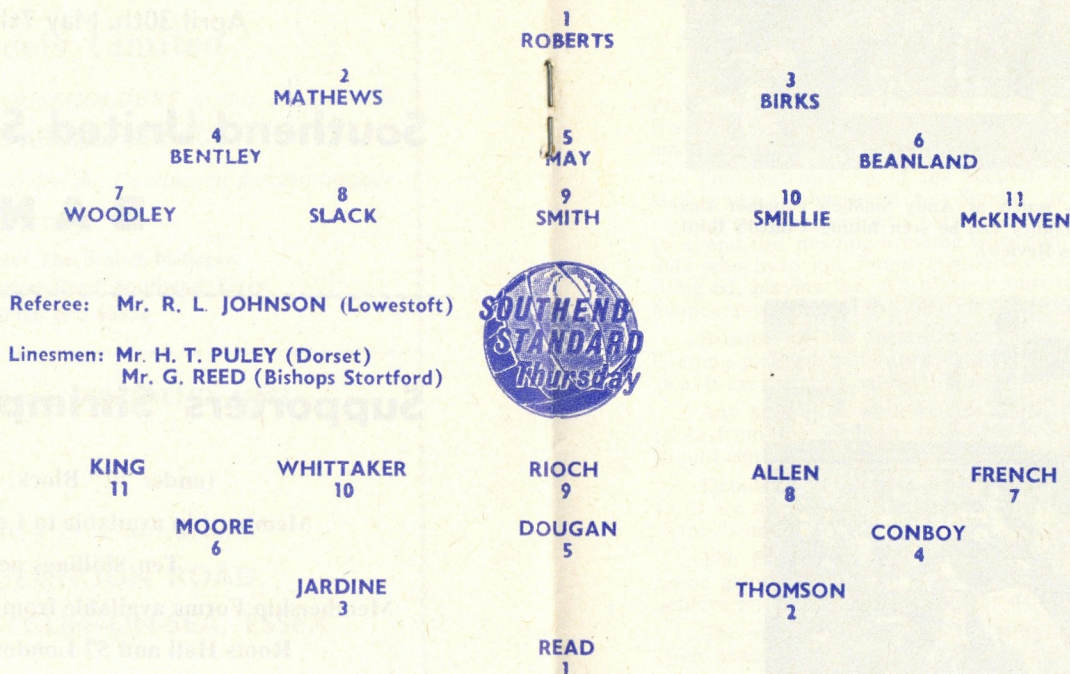
1237/9 LONDON ROAD  
LEIGH

Tel.: Southend-on-Sea 75013

Colours:  
Blue & White

## SOUTHEND UNITED

Substitute:  
FLATT



Colours:  
Black & White

## LUTON TOWN

Substitute:  
JOHNSON

## Welfare

HOUSE FURNISHERS

win the  
"Value for Money" Cup

● WE'RE ON THE BALL!

ALL CARPETS MEASURED  
AND FITTED FREE  
BY EXPERTS

COMPLETE HOME  
128 Gns.  
Unique Package Deal

104, 108, 112 — FURNITURE  
110 — TV & RADIO SHOP

SUTTON RD., SOUTHEND  
Telephone: 63401

CABLES  
Radio Taxis

PHONE: DAY OR NIGHT

SOUTHEND

43047

OR

49156



OVER 200 USED CARS IN STOCK

Part Exchanges Welcomed - Easy H.P. Terms Available  
648/656 LONDON ROAD, WESTCLIFF-ON-SEA  
And at Station Road, Thorpe Bay : Southernhay, Basildon

Austin - Morris - M.G. - Wolseley - Riley - Vanden Plas

BUY A B.M.C. WARRANTED  
USED CAR

**SMAC**  
SOUTHEND MOTOR & AUTO CO. LTD.

Telephone: South Benfleet 2771-2  
A. J. SMITH & SON  
(Benfleet) LTD.

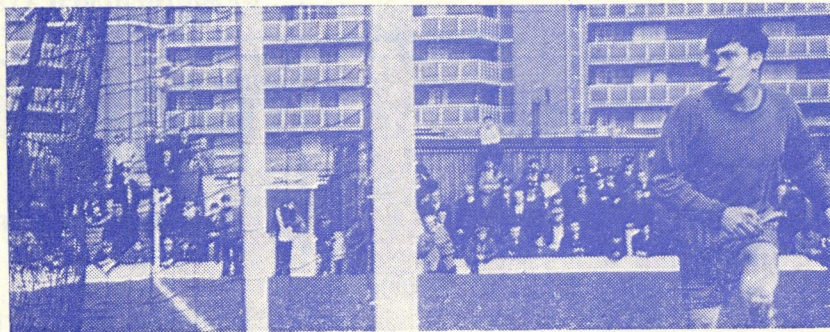
Timber, Hardware  
and Builders' Merchants

Everything for the Do-It-Yourself  
Handyman

Timber Yard and Sawmills:  
242 HIGH ROAD, BENFLEET  
Reg. Office: Greenwood Avenue



## Last week's match in action pictures



Chesterfield 'keeper Mike Brunt can only watch as Andy Smillie's equaliser rips into the back of the net and below Derek Woodley can be seen hitting United's third goal. (Pictures by courtesy of the Southend News Review).



● We are on the ball at . . .

**MARSHALL & PARSONS LTD.**

for all

**WOODWORKING MACHINERY  
PORTABLE POWER TOOLS FOR HOME AND INDUSTRY  
SURVEYING INSTRUMENTS AND ACCESSORIES**

**1111 LONDON ROAD - LEIGH  
SOUTHEND 74867**

### *Southend United Supporters' Club Youth Section*

Members who have not collected and completed their voting forms for the Player of the Year competition should do so as soon as possible — preferably from the Programme Shop this evening. Voting so far indicates that the competition is going to be very open.

The next meeting of the Section will be this Friday at 7.30 p.m. at Roots Hall when arrangements for Sunday next's 7-a-side soccer competition will be made. Pre-arranged teams may be entered and should nominate one representative to attend this meeting bringing with him the team's entrance fee of 3/6d. Individuals who have not found themselves teams to join will be welcome and should bring 6d. playing fee. All players must be members of the Youth Section — new members may join at this meeting. The subscription is 1s.

Because of the Inter-league game at Roots Hall on May 3rd, the Social Evening planned will probably have to be postponed. For further details see the local press and next Saturday's programme notes.

Any supporter who wishes to exchange pre-war programmes and especially those from the Stadium days with a Southend supporter living out of the area should contact the Youth Section at Roots Hall.

Details of the remaining coach trips this season (to Southport and to Chelmsford) are not available at present but enquiries should be made through the usual channels on Saturday.

The Programme Shop have still got programmes from most of Southend's home games this season. Now is the time to complete your collection and if we achieve promotion these will make excellent souvenirs.

The records played at all home games are obtainable from Kelley's of 92 High Street (near the railway bridge) who kindly sponsor the programmes.

For **ATTRACTIVE INTEREST (Tax Paid)**  
with **IMMEDIATE WITHDRAWALS**

**SAVE**

with the

**SOUTH EAST ESSEX BUILDING SOCIETY**

**28 Clarence Street, Southend**

**Tel.: 49765**

**Assets exceed £3,000,000**



The need of every household

★ A RELIABLE MILK SUPPLY

## HOWARDS DAIRIES LTD.

WESTCLIFF-ON-SEA

The Dairy with a Reputation

Telephone: Southend 43311

Read the

# SUNDAY EXPRESS

for the Best reports of  
all Southend United matches

## TYRES ★ TYRES ★ TYRES

UP TO 25% DISCOUNTS

### DICKS TYRES (SERVICES)

1067 LONDON ROAD, LEIGH

Telephone: Southend 77047

NEW AND REMOULDS - ALL MAKES

*Tea and Coffee Auto-Bar at Your Service*



**British Rail**

### GROUP TRAVEL PLAN

Club Outings, Friends, Family Groups of TEN or more can take advantage of bargain price single day return or period return fares (specially attractive bargains for the under 18's), FOR FULL DETAILS contact your local Station Master or any British Travel Agent.

### Fixtures 1966-67

Gd. F. A. Gate

Goal Scorers

1966					
Aug.	20	Bradford City ... H	2-1	4,596	Beanland, Firmani.
	27	Exeter City ... A	1-0	4,346	Baber.
Sept.	2	Hartlepoons U. ... H	2-0	6,689	Woodley, Firmani.
	7	Chester ... A	1-1	6,123	Smith.
	9	Halifax Town ... A	2-2	2,835	Firmani, Baber.
	17	Brentford ... H	3-0	8,200	Woodley, Bentley, Firmani.
	24	Newport County A	0-3	2,994	
	26	Chester ... H	5-1	8,822	Smith 3, Baber, Firmani.
	30	Barnsley ... H	3-0	9,576	Smith 2, Baber.
Oct.	8	Bradford ... A	2-1	5,391	Woodley, Smith.
	14	Port Vale ... H	4-1	12,609	Firmani 2, Beanland, Baber
	17	Wrexham ... A	0-2	14,050	
	22	Crewe Alex. ... A	0-1	4,063	
	28	Barrow ... H	1-3	9,063	Baber
Nov.	4	York City ... A	1-2	4,079	Baber
	12	Lincoln City ... H	3-0	6,761	Smith 2, Woodley.
	14	Wrexham ... H	1-1	9,221	Smith.
	19	Chesterfield ... A	1-2	5,007	Woodley.
Dec.	3	Rochdale ... A	2-1	1,733	Flatt, Slack.
	10	Southport ... H	0-1	7,466	
	17	Bradford City ... A	1-2	3,010	Bentley.
	26	Aldershot ... A	2-5	6,049	Baber, Flatt.
	27	Aldershot ... H	4-0	6,864	Beanland, May, Firmani, Slack.
	31	Exeter City ... H	0-0	6,534	
Jan.	6	Hartlepoons U. ... A	2-1	9,574	Bentley, Baber.
	14	Halifax Town ... H	1-0	6,905	Flatt.
	21	Brentford ... A	1-1	10,646	Flatt.
Feb.	4	Newport County H	1-0	7,476	May
	11	Barnsley ... A	2-1	7,648	Ingle 2.
	18	Notts County ... H	1-0	8,476	Smith.
	25	Bradford ... H	4-0	7,749	Smith 3, Ingle.
Mar.	4	Port Vale ... A	3-1	4,695	Woodley, Smith, McKinven
	11	Notts County ... A	0-1	3,858	
	17	Crewe Alex. ... H	1-1	9,453	McKinven.
	24	Tranmere R. ... A	2-1	12,701	Flatt 2.
	25	Stockport City ... A	1-4	9,024	Bentley.
	27	Tranmere R. ... H	0-0	10,049	
	31	York City ... H	2-1	8,513	McKinven, Flatt.
Apr.	8	Lincoln City ... A	2-2	3,116	Smith 2.
	13	Luton Town ... A	0-1	4,666	
	15	Chesterfield ... H	4-1	6,895	Smillie, Smith, Woodley, Flatt.
	22	Barrow ... A			
	24	Luton Town ... H			
	29	Rochdale ... H			
May	6	Southport ... A			
	13	Stockport County H			

Wine and Dine at the

## CLIFFS PAVILION

now available for  
Banquets, Dances, Conferences  
Stage Productions

Telephone: **CATERING—Southend 47396**  
**BOX OFFICE—Southend 47382**



# DIVISION IV

	Home					Away						
	P	W	D	L	F	A	W	D	L	F	A	Pt
Stockport	40	14	5	1	34	13	9	5	6	23	20	56
Southport	42	17	2	1	43	13	3	11	8	20	26	53
Barrow	42	9	8	3	30	16	11	3	8	40	36	51
Tranmere	40	12	5	2	32	14	7	7	7	23	23	50
<b>Southend</b>	<b>41</b>	<b>14</b>	<b>4</b>	<b>2</b>	<b>42</b>	<b>11</b>	<b>7</b>	<b>4</b>	<b>10</b>	<b>26</b>	<b>35</b>	<b>50</b>
Crewe	40	13	4	3	39	23	6	7	7	23	24	49
Hartlepoons	42	14	3	4	41	26	7	3	11	22	33	48
Brentford	40	12	7	2	34	17	5	6	8	22	32	47
Wrexham	40	10	11	0	41	16	3	8	8	24	35	45
Bradford City	42	12	4	5	44	28	5	6	10	22	29	44
Aldershot	42	12	4	5	42	19	3	8	10	22	37	42
Port Vale	39	8	5	6	27	22	5	7	8	19	25	38
Barnsley	42	8	7	7	30	27	4	7	9	26	32	38
Chesterfield	40	11	5	3	30	13	4	2	15	25	40	37
Halifax	39	9	9	2	32	24	4	2	13	18	33	37
Exeter	41	8	6	6	26	24	3	8	10	18	33	36
Luton	41	13	5	3	40	21	1	2	17	12	48	35
Newport	40	7	9	4	30	21	2	7	11	17	35	34
Chester	42	6	5	10	22	32	6	5	10	28	44	34
Notts County	40	9	5	6	27	22	3	4	13	21	40	33
Rochdale	40	9	3	8	24	22	2	6	12	20	44	31
Bradford	41	7	4	10	28	32	4	5	11	20	41	31
York	40	10	5	6	43	29	0	5	14	15	37	30
Lincoln	40	7	7	6	36	32	1	4	15	11	35	27

# THE LONDON

## MID-WEEK LEAGUE

Tables of Results to Friday,  
14th April, 1967 (Inclusive)

		Goals						
		P	W	D	L	F	A	P
Q.P.R.	25	17	6	2	70	22	40	
Millwall	24	17	4	3	74	27	38	
Char. A.	25	16	6	3	59	21	38	
Col. U.	27	13	6	7	50	50	32	
Watford	26	8	3	15	42	60	19	
A'shot	22	7	3	12	39	57	17	
S'end U.	23	5	3	14	39	53	13	
Ley. O.	23	4	3	16	19	55	11	
Luton T.	25	4	2	19	28	75	10	



## MID-WEEK LEAGUE

1966	Opponent	Gd.	F.A.
Aug. 29	Leyton Orient	H	1-1
Sept. 14	Aldershot	A	Post.
22	Luton Town	A	5-1
28	Millwall	H	5-1
Oct. 19	Charlton Ath.	H	1-3
Nov. 2	Watford	H	3-5
9	Colchester U.	A	2-3
16	Colchester U.	H	0-0
23	Leyton Orient	A	2-1
30	Luton Town	H	7-1
Dec. 7	Millwall	A	2-0
14	Queens Park R.	H	0-2
1967			
Jan. 3	Charlton Ath.	A	2-3
11	Aldershot	H	Post
17	Watford	A	1-5
23	Queens Park R.	A	1-2
25	Luton Town	A	0-2
Feb. 7	Watford	A	1-4
15	Aldershot	H	1-3
21	Queens Park R.	A	1-1

Mar. 1	Colchester U.	H	2-3
8	Millwall	A	2-5
22	Charlton Ath	H	0-4
Apr. 4	Charlton Ath	A	0-3
12	Luton Town	H	Post.
19	Leyton Orient	A	
26	Watford	H	
May 3	Aldershot	A	
10	Queens Park R.	H	
17	Colchester U.	A	
18	Leyton Orient	H	
24	Millwall	H	

These Fixtures are the copyright of the Football League Limited and are printed by their permission under Licence No. 2. They must not be reproduced in whole or in part without permission of the Football League Limited.

Commentaries on all First Team matches are relayed to local hospitals by members of Southend Toc 'H'.

Telephone: SOUTHEND-ON-SEA 76639

Established 1932

## JOHNSON, SONS & JAGO LTD.

YACHT BUILDERS - MARINE ENGINEERS

Contractors to Admiralty, War Department, Customs & Excise

All Types of Boats Repaired and Refitted

LEIGH-ON-SEA - ESSEX

## James Abbott, Dennis Smith & Partners

Surveyors - Valuers - Auctioneers - Estate Agents - Commercial Consultants

NEW AND ESTABLISHED PROPERTIES

THROUGHOUT ESSEX

132a HIGH STREET, SOUTHEND-ON-SEA

Tel.: 68097/68338

Also at Leigh-on-Sea, Colchester, Chelmsford, Wickford, Witham and Halstead

For the finest in furnishing fabrics...

## D. H. STEVENS LTD.

SANDERSON, SUNDOUR, GRAFTON, LISTER, HEAL, SEKERS

Curtains, Loose Covers, Eiderdowns Re-covered

Curtain Railways — all types — supplied and fitted, including Kirsch cord-controlled cornice poles, Carpets, Household Linens, etc.

Agents for LUXAFLEX Venetian Blinds

91-93 LEIGH ROAD, LEIGH-ON-SEA

Telephone: SOUTHEND 76654



Luxury Coaches Available for Private Hire

35- 37- 41- 52-Seater Coaches for ALL occasions

ANY DISTANCE

London Theatres, Outings, Tours and all Popular National Events

## Supreme Coaches Limited

Office:

274, LONDON ROAD, HADLEIGH, ESSEX

Telephone: SOUTHEND-ON-SEA 557261





## SOUTHEND-ON-SEA

# DANCING

**Phone**  
**66276**

Large and Small Halls  
For

CONFERENCES  
NEW ESTUARY SUITE  
K U R S A A L  
C A S I N O

Now the centre of  
sophisticated  
Continental - style  
leisure.  
MEMBERS ONLY



## Britain's BRIGHTEST Amusement Park

# Half Time Score Board

A	.....
B	.....
C	.....
D	.....
E	.....
F	.....
G	.....
H	.....
I	.....
J	.....
K	.....
L	.....
M	.....
N	.....
P	.....
R	.....
S	.....