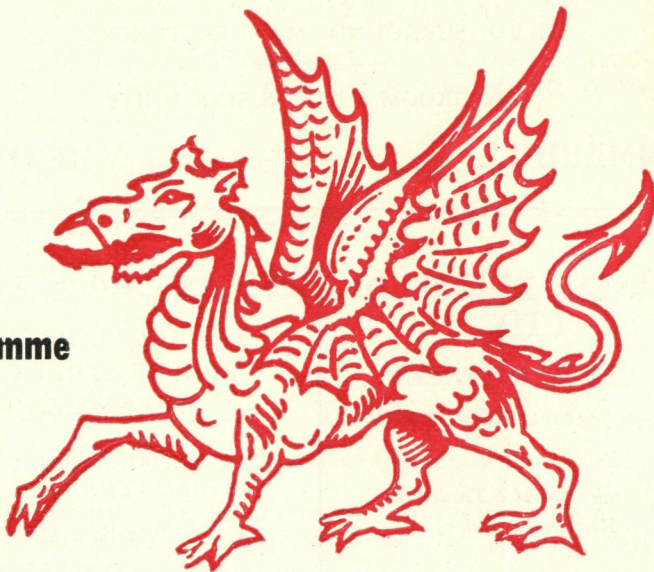


Wrexham Association Football Club Ltd.

Saturday, 1st October - - 1966

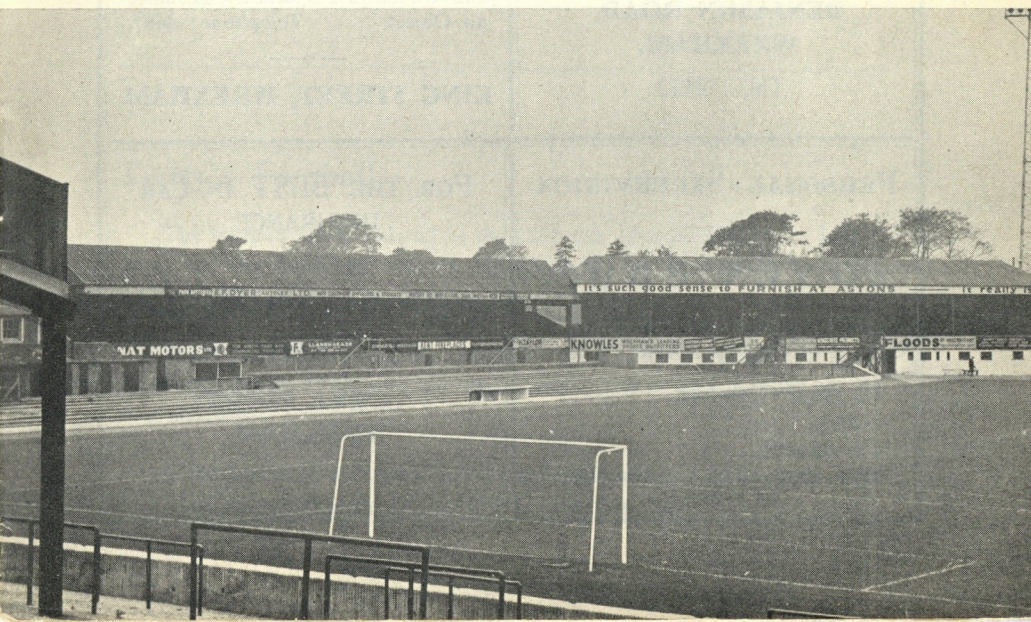
**Official
Programme**

6^{D.}



Wrexham v. Luton T.

Kick-off 3-15 p.m.



Telephone : Works and Office — BRYMBO 345

KENT TILED FIREPLACES

TILED SURROUND MANUFACTURERS

— also —

BATHROOM SUITES & SINK UNITS

SUMMERHILL

WREXHAM

ERNEST BUSFIELD LTD.

6 CHESTER STREET

'Phone Wrexham 2708 & 4100

Overalls for All Trades at
Reasonable Prices

CHAS. R. EAMES LTD.

THE DRILL HALL,
POYSER STREET,
WREXHAM.

ELECTRICAL REPAIRS TO
ALL VEHICLES

Tel. — Wrexham 2558/9.

AUTO ELECTRICAL ENGINEERS
TO ALL MAKES OF VEHICLES

GEO. JONES

ELECTRICAL ENGINEER

BENJAMIN ROAD,
WREXHAM.

Tel. : 2532

Fare Way Restaurant
QUALITY and QUICK SERVICE

Outside Catering for—

Balls, Dances & Dinners, Banquets
and Weddings a Speciality, Distance
no Object. Telephone 4687.

KING STREET, WREXHAM

PERSONAL SUPERVISION

JONES BROS.

PLUMBING and HEATING
CONTRACTORS

10 Heol Glyndwr,
Adwy,
Coedpoeth,
Wrexham. Tel. Coedpoeth 522

FOR THE BEST IN CAR
INSURANCE

— consult —

MOTOR INSURANCE
— CENTRE LTD. —

3 YORKE STREET,
WREXHAM.

Tel. : Wrexham 4194

Wrexham Association Football Club Limited.

President :—MAJOR F. EVELYN SOAMES.

Vice-President :—W. B. N. KINGTON, Esq., T.D.

Directors—W. H. Evans (Chairman); E. A. McMahon (Vice-Chairman);
J. T. Davies, T. H. Dodd, N. Edwards, H. G. Phillips,
F. J. Tomlinson.

Manager—Mr. J. ROWLEY.

Secretary—CLIFFORD LLOYD.

Ground—RACECOURSE, WREXHAM.

Telephone—Wrexham 2414.

EDITORIAL—

This week I have news for the Junior members of the Association.

A full meeting of the Junior members will be held at THE CHURCH
HOUSE, REGENT ST., WREXHAM at 7-15 p.m. on FRIDAY,
14th OCTOBER, 1966. Note the change of date.

SLOGAN COMPETITION

The Supporters' Association would like supporters to help them to find
a slogan for car stickers. A prize of about £5 to the writer of the slogan
chosen. Come on supporters send your slogans of about 5 words to :—
J. L. Blackwell, 55 First Avenue, Gwersyllt by 20th October, 1966, marking
envelope "Slogan" or hand it in to the Supporters' Office, Mold Road,
Wrexham.

Today's Football—

The football being donated to the Club this afternoon has been kindly
given by Mr. Frank Wingett of MESSRS. W. H. WINGETT & SONS,
LTD., Chester Street, Wrexham.

This well-known firm of Auctioneers & Estate Agents are keen
supporters of our Club, and are always ready and willing to assist in any
way they can.

Can they be of assistance to you when purchasing a house ? Why not
give them an opportunity — you will be well rewarded.

The Johnstown Mechanical & Electrical Co. Ltd.

HIGH STREET, RHOS, WREXHAM

MACHINERY and PLANT INSTALLATION
SPECIALISTS

Industrial Maintenance Engineers, Electrical Repair and Installation

'Phone : Head Office RHOS 504

Fabrication of Steel & Pipe Work. Machining Capacity

SECRETARY'S NOTES—

Today we are pleased to act as hosts to Luton Town, and to their Directors, Players and Supporters we extend our warmest welcome to North Wales. May they enjoy everything except the final result.

A good win against Notts County on Monday last has lifted us to tenth position in the League Table, and with a sixth of the season already gone we are hoping this augurs well for the future. Those of you who were at the game were, I feel sure, pleased with the fighting spirit shown by our 'boys', who twice came from behind and eventually finished up winners by three goals to two.

One of the disappointing features so far this season is the support which we are receiving. Whilst our average 'gates' compare with most in our Division, I feel sure we could do better. Can you — the supporter of the Club — bring along one of your friends to the next home match. With the extremely high cost of running professional football nowadays it is imperative that every effort is made by everyone connected with the Club to give as much support as they possibly can. If you cannot attend matches you can still support the Club by way of the various competitions which are run weekly i.e. lottery on football, bingo, etc. Come on you Wrexham Supporters, let's show the footballing world that we appreciate our own local professional Club.

Congratulations to two of our amateur players — John Edwards and Robert Geoffrey Lloyd — who have both been selected to take part in the final North v. South Amateur International Trial Match at Newtown. Good luck, boys.

To conclude I am again reminding you of the Under 23's International schedule to be played on our ground on Wednesday, 30th November next, kick-off 7-15 p.m., when Wales meet Scotland. Keep this date in mind and bring the good lady or lady friend along with you.

BE ON THE BALL

Call in at ABBOT CAFE, Abbot St., Wrexham — Parties Catered for. Tel. Wrexham 3000.

*Why not travel to AWAY MATCHES
With those who TAKE THE TEAM*

— try —
Phillips' Coaches - - Rhosyllen

Repairs at Reasonable Cost
BODY REPAIRS — RE-CELLULOSING

Rhosddu Motors Ltd.
Rhosddu Road, Wrexham
Tel. : 4117.

Tel. : Wrexham 3698 and 3648

J. JONES
Market Street, Wrexham
*Suppliers of best Potatoes to the
Catering Trade.*

If you LOVE ANIMALS and
HATE CRUELTY remember the

R.S.P.C.A.

and please send a donation to

THE CHIEF SECRETARY, R.S.P.C.A.

105 Jermyn St., London, S.W.1.

MANAGER'S NOTES—

So far this season the players playing in the first team have shown to everyone that they have 100% fighting qualities. If you stop and think about the results so far in all accept the team have been a goal behind and still came back to make a draw, at least if we forget the Hartlepoons one.

At Barnsley the team at one time were two goals down but this was all against the run of play, we scored just before half-time and then came out second half showing everyone they had football skills to go along with their fighting spirit against a team that belied their position in the league table.

To you, loyal supporters, who made the trip to Barnsley and gave the team such wonderful real support, all at the Racecourse thank you and say bring your friends along too, every little helps. While I am on about supporters, it was nice to see that during the match against Notts County there was no running onto the pitch.

Those of you who were at our home game against Notts County must agree about the spirit of the team and the improvement in their play. In each game, and on present form, we should hold a respectable position in the league table throughout the season.

In the amateur cup-tie against Rossett at Rossett I selected a very young team and they gave a first-class display against a very much older, stronger and experienced team and came out winners in the end 3 goals to 1. S. Williams 2, R. Bancroft 1, being the scorers, surely after two away cup games the boys luck must change and give them a home draw in the next round.

COOPER & DAVIS
Central Arcade, Wrexham
For Hair to put on the Head
FIRST CLASS HAIR STYLING
'Phone Wrexham 3354

G. & R. Brimblecombe
LIMITED
BUILDERS and CONTRACTORS
Chester Road, Buckley, Flints.
TELEPHONE : BUCKLEY 349

GRAY'S
ELECTRICAL SERVICES
(WREXHAM) LTD.
4916 Phone 51275
— 24 Hour Service —

Davies and Windsor Ltd.
Floor Covering and Soft Furnishing
**Central Buildings. Tel 2002 and
13 Central Arcade.**
41 Willow St., Oswestry. Tel. 3734

TOM EDWARDS
(MAIL ORDER) LTD.
SHOP PREMISES
7 ARGYLE STREET,
WREXHAM.

FOR
BARGAIN TOOL OFFERS

Forthcoming Matches at the Racecourse—

Saturday, October 8th—
**WREXHAM RES v.
ELLESMERE PORT**
Kick-off 3.0 p.m.

Saturday, October 15th—
WREXHAM v. BRADFORD
Kick-off 3.15 p.m.

Monday, October 17th—
WREXHAM v. SOUTHEND
Kick-off 7.15 p.m.

FIRST TEAM GOALSCORERS TO DATE—
Evans 4, McMillan 4, McLaughlin 3, Oldfield 2,
Stacey 1, Griffiths 1, Total 15.
RESERVE TEAM GOALSCORERS TO DATE—
Kinsy 4, Thomas 3, Campbell 2, R. G. Lloyd 2,
Hughes 2, McLaughlin 1, Carrick 1, McMillan 1,
Griffiths 1, Total 17.

RAY'S MOTORS
of WREXHAM
— for —
VAUXHALL & BEDFORD
SELF DRIVE CARS & VANS
SCHOOL OF MOTORING
RHOSNESNI
'Phone—Wrexham 4583.

*The Lifeboats Need
YOUR Help*
Send a contribution, however
small to
**ROYAL NATIONAL
LIFEBOAT
INSTITUTION**
42 Grosvenor Gardens,
London, S.W.1.

**The National Playing
Fields Association**
President : H.R.H. THE DUKE
OF EDINBURGH, K.G., K.T.
Donations to help in providing
playing fields and children's
playgrounds throughout the
country will be gratefully
received and acknowledged by
**THE GENERAL
SECRETARY,**
71, Eccleston Square,
London, S.W.1.

READ THE WREXHAM LEADER WALES LARGEST WEEKLY FOR

ON CHALONE

WREXHAM				LUTON TOWN			
Colours — Red shirts, white facings, white shorts.				Colours — White shirts, black shorts.			
11		McLOUGHLIN		7		FRENCH	
6		OLDFIELD		4		SLOUGH	
10		McMILLAN		8		WHITTAKER	
3		WALL		9		THOMSON	
1		SCHOFIELD		5		RIDDICK	
5		STACEY		1		READ	
9		KINSEY		9		THEAR	
2		MASON		10		RIOCH	
8		EVANS		6		MOORE	
4		POWELL		11		KING	
7		GRIFFITHS		3		JARDINE	
Referee— Mr. L. J. Hamer, Bolton.				Linesmen— Mr. B. W. Porter, Wirral (Red) Mr. E. Blunstone, Crewe (Orange)			

PRIZE BORDER BEER

Reporting on Sporting in every Tuesday & Friday LEADER

FOR
ADVERTISING
SPACE
please Contact
SPORTS

PUBLICATIONS
46 WATFORD WAY,
LONDON, N.W.4.

W. D. STANT Ltd.
Building Contractors
Rivulet Road,
Wrexham.

Telephone—Wrexham 3460

Drink and enjoy . . .



. . the popular beer

**NORTH WREXHAM PLANT
HIRE LTD.**
ST. GEORGE'S CRESCENT,
WREXHAM

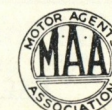
Phones : Wrexham 4361 Night : Rossett 516
*The only "dump truck" specialists
in the North West*

Scammell 15 & 25 Ton Dump Trucks. Caterpillar
955 Loading Shovels. International Drott 6 & 8
Ton Loading Shovels. Small 10 & 12 Ton Dump
Trucks. Site Clearance and Earth Moving.

THINKING OF BUYING A HOUSE !
James Stewart of Wrexham Ltd.
Have built the Home You are seeking
Housing estates throughout Wrexham
Full details and colour brochure from—
GWYN R. JONES
(SALES AGENT),
Estate Office,
High Street,
Gwersyllt,
Nr. Wrexham.



BALMUIR GARAGE
(W. J. Dixon, Proprietor).



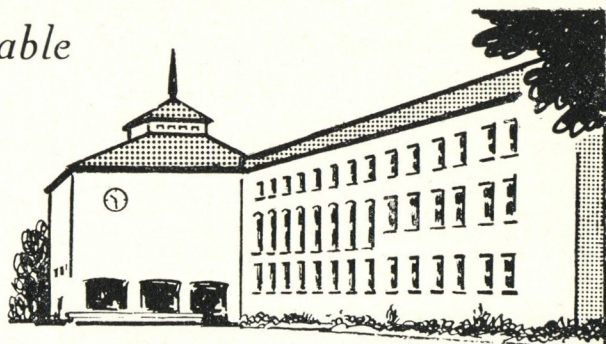
MORRIS DEALERS
GRESFORD, WREXHAM
Telephone—Gresford 412.

top the table

invest in

wrexham

borough—



the hallmark of a sound investment !

LEAGUE DIVISION IV

	Home	P.	W.	D.	L.	F.	A.	Away	w.	D.	L.	F.	A.	Pts.
Stockport	8	3	0	0	8	3		3	1	1	7	3	13	
Southend	8	4	0	0	12	2		1	2	1	4	6	12	
Newport	9	3	0	1	10	3		2	2	1	7	7	12	
Southport	9	4	0	1	10	4		1	1	2	8	8	11	
Bradford	8	1	1	2	7	6		3	1	0	11	5	10	
Port Vale	8	2	2	0	7	5		1	2	1	2	3	10	
Tranmere	8	1	3	0	4	3		2	1	1	6	4	10	
Aldershot	8	3	1	0	11	5		1	1	2	4	8	10	
Barrow	9	0	3	1	6	7		3	1	1	10	7	10	
WREXHAM	8	2	2	0	9	4		0	3	1	6	7	9	
Hartlepool	9	3	0	2	7	6		1	1	2	4	8	9	
Chesterfield	8	1	1	1	3	2		2	1	2	8	9	8	
LUTON	8	4	0	1	12	5		0	0	3	1	6	8	
Bradford City	8	3	0	1	8	3		0	2	2	7	9	8	
Rochdale	8	3	0	1	6	3		0	2	2	3	6	8	
Crewe	8	2	1	1	9	7		1	1	2	5	7	8	
Brentford	8	1	3	0	5	4		1	0	3	3	9	7	
Chester	8	1	1	2	4	8		0	3	1	3	7	6	
York	8	2	2	0	10	6		0	0	4	3	10	6	
Exeter	8	1	1	2	4	4		0	3	1	4	6	6	
Notts County	9	1	3	0	6	5		0	0	5	6	17	5	
Halifax	8	1	3	0	8	7		0	0	4	3	11	5	
Lincoln	8	1	1	2	5	8		0	1	3	4	8	4	
Barnsley	9	1	1	4	7	12		0	0	3	3	7	3	

(Not including last night's games).

WHAT CAUSES CANCER ?

is a question which only research can answer.
But research is costly. Will you help just a
little by sending a donation to the

BRITISH EMPIRE CANCER CAMPAIGN
11, GROSVENOR CRESCENT, LONDON, S.W.1.

**DO YOU WANT TO SELL,
BUY or SWAP NEW and
USED FURNITURE**

SEE US FIRST AT
21 Bridge Street, Wrexham

George L. Evans Ltd.
Wholesale Tobacconists &
Confectioners

13/15 Argyle St., Wrexham
For Supplies 'Phone Wrexham 2639

WHERE MOST MEN SHOP

THE BON LTD.

E. R. HUGHES

—The Man's Shop—

**TOWN HILL,
WREXHAM**

Tel. : 2686

Also DRESSWEAR : HIRE SERVICE

**EVERY EIGHT HOURS
a SPASTIC Child is Born**

The National Spastic Society has done much to help these children with love, care and skilled training, to live worthwhile and rewarding lives. YOUR help is needed. Will you please help us to help these children to live full and happier lives.

**THE NATIONAL SPASTICS
SOCIETY,**
12 Park Crescent, London, W.1.

PEN PICTURES OF LUTON TOWN—

TONY READ—His first club was Sheffield Wednesday, and in 1964 he left them to go to Peterborough. Transferred to Luton March 1965. Last season made 35 appearances in forward line scoring 12 goals besides 6 appearances in goal.

THOMSON—He first came into prominence with Partick Thistle, and was later transferred to Liverpool for a big fee. Transferred to Luton on 2nd August, 1965.

JARDINE—Played for two seasons for Dundee before joining Luton in 1961. Signed as an outside left but since made the left back position his own.

SLOUGH—Another Luton boy who has graduated through ranks, being offered full terms May, 1965. Can also play at wing half and inside forward. Gained County Representative honours as Amateur in the latter position.

RIDDICK—Turned professional in April, 1961 following a short period of apprenticeship. He has been with the club since making many first team appearances equally well at full back, half back and as a forward.

MOORE—In his second season for Luton. Previous club Motherwell. Made 43 League appearances and scored five goals last season.

FRENCH—Came into prominence when playing for Shrewsbury and gained Youth International caps for England. Played for Swindon and Watford before joining Luton October, 1965.

WHITTAKER—Joined Luton from Arsenal in March, 1964. Gained England Youth International caps in 1962, 1963. He went straight into the First Team and held his place ever since.

THEAR—Joined Arsenal as Apprentice Professional. Can also play at centre half. Holds an F.A. Youth Cup winners medal.

RIOCH—He signed Apprentice Professional in August, 1963 and full professional in September 1964. Made 21 League appearances last season.

KING—Has played for Cardiff and Torquay, from whom he was transferred in June, 1966. Welsh Schoolboy and Youth International.

H. N. STEWART

57 King Street, Wrexham.

Phone 4466

The Shop for Service in Furnishings
Ladies & Gents Fashion Stockists
Carpets Venetian Blinds Expert Fitting

THORNTONS

RADIO & ELECTRICAL ENGINEERS
TELEVISION SPECIALISTS

62b REGENT STREET

4 ODEON BUILDINGS

Telephone—Wrexham 2510

Pop into The Kings Head

(G. OWEN — NEW TENANT)

BRIDGE STREET,

Phone **WREXHAM 51472**

**GAY ROLLICKING TIME
BORDER BEERS**

E. F. DYER (Autolex) LTD.

Auto-Electrical Specialists and
Stockists. Electrical Repairs to
any make of Automobile.

WATERY RD, WREXHAM

Telephone—Wrexham 4238

MOTA SPOT
SUPERMARKET
3 Chester St., Wrexham
Wrexham's Walk Round Store for
Car, Camping, Caravan Accessories

Vincent Greenhous Ltd.

On your way to and from the match have a look at our various accessory displays for the "Do it yourself" man.

It's such good sense to
furnish at ASTONS....
....it really is

W.A.F.C. S.C. NOTES by "Cee Tee"—

Up to the present time, we have had a fairly good start to the season and it was pleasing to see an improvement in the "gate." If our team keeps up the good work, and we are treated to an exciting match like last Monday evening, we should be getting above the 10,000 mark very soon and that would be a wonderful boost to everyone concerned, who are determined to keep the flag flying at the 'Course.

This afternoon we face opposition from Luton and we extend a welcome to them and any supporters who have travelled with them. We hope that we shall all enjoy another thrilling game with, of course, our lads finishing up on the winning side.

The support for our money raising schemes has not come up to expectations this season, so may I appeal to those who have lapsed their membership to rejoin, for, by so doing, we can help to keep the Club going as we have been doing in recent years.

Home Comfort at Reasonable Cost

Telephone—Wrexham 3951

Abbot Furnishers

5 & 8 ABBOT STREET, WREXHAM

Fully Guaranteed—Furniture, Bedding, Carpets, Textiles.

JOHN F. SHERWIN

PLUMBER & HEATING ENGINEER

Afoneitha Road Penycae.

'Phone — RHOS 258

I. HAYWARD LTD.

VEHICLE DISMANTLERS FOR SPARES
CASH BUYERS FOR ALL SCRAP METALS

Rhostyllen, Wrexham.

Phone — 4703



FOR ALL HOLIDAY BOOKINGS—
Air Travel — Cruises — Party Travel
DELMAR TRAVEL AGENCY
CHESTER RD., GRESFORD, WREXHAM
Telephone—GRESFORD 246

Fixtures for Season 1966-67

FOURTH DIVISION

1966		
Aug.	20—Exeter City	Home
	27—Hartlepool	Away
Sept.	3—Halifax	Home
	7—Notts County	Away
	10—Brentford	Away
	17—Newport	Home
	23—Barnsley	Away
	26—Notts County	Home
Oct.	1—Luton Town	Home
	8—Chester	Away
	15—Bradford	Home
	17—Southend	Home
	22—Port Vale	Away
	29—Crewe Alex.	Home
Nov.	5—Barrow	Away
	12—York City	Home
	14—Southend	Away
	19—Lincoln	Away
	26—1st Rd. F.A. Cup	
Dec.	2—Stockport	Away
	10—Rochdale	Home
	17—Exeter	Away
	26—Southport	Away
	27—Southport	Home
	31—Hartlepool	Home
1967		
Jan.	7—2nd Rd. F.A. Cup	
	14—Brentford	Home
	21—Newport	Away
	28—3rd Rd. F.A. Cup	
Feb.	4—Barnsley	Home
	11—Luton	Away
	17—Tranmere	Away
	25—Chester	Home
Mar.	4—Barnsley	Away
	11—(5) Tranmere	Home
	18—Port Vale	Home
	24—Bradford City	Home
	25—Chesterfield	Away
	27—Bradford City	Away
Apr.	1—Barrow	Home
	7—York City	Away
	10—Aldershot	Home
	15—Lincoln	Home
	22—Crewe Alex.	Away
	26—Aldershot	Away
	29—(S.F.) Stockport	Home
May	6—Rochdale	Home
	13—Chesterfield	Home
	20—Final.	
	27—Halifax	Away

CHESHIRE COUNTY LEAGUE

1966		
Aug.	20—Ellesmere Port	Away
	24—Bangor City	Home
	27—Chester	Home
	29—Macclesfield	Away
Sept.	3—Altrincham	Away
	7—Bangor City	Away
	10—Stalybridge (Cup)	Home
	17—	
	21—Tranmere	Home
	24—Witton Albion	Home
	26—	
	28—Winsford	Home
Oct.	1—Buxton	Away
	8—Ellesmere Port	Home
	15—Stafford Rangers	Away
	17—	
	22—Stockport	Home
	29—Stalybridge	Away
Nov.	5—Northwich Vic.	Home
	12—Winsford	Away
	14—	
	19—Macclesfield	Home
	26—1st Rd. F.A. Cup	
Dec.	2—	
	3—New Brighton	Home
	10—Stockport County	Away
	17—Runcorn	Home
	24—	
	26—Rhyl	Home
	27—Rhyl	Away
	31—Frickley Colliery	Away
1967		
Jan.	7—Hyde United	Home
	14—Mossley	Away
	28—Stafford Rangers	Home
Feb.	4—Northwich Vic.	Away
	11—Mossley	Home
	18—Wigan	Home
	25—New Brighton	Away
Mar.	4—Frickley Colliery	Home
	11—Tranmere	Away
	18—Wigan	Away
	24—Oswestry	Away
	25—Stalybridge	Home
	27—Oswestry	Home
Apr.	1—Runcorn	Away
	8—Altrincham	Home
	15—Hyde Utd.	Away
	22—Buxton	Home
	29—Chester	Away
May	6—Witton Albion	Away

R. & G. SALES & CO.

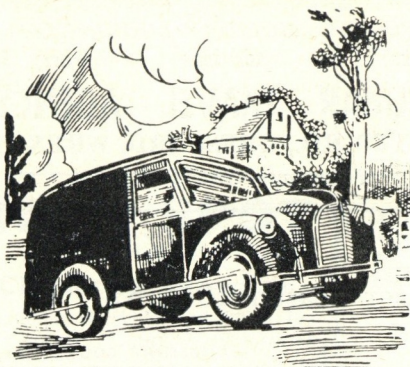
SECTIONAL BUILDINGS

Horticultural, Agricultural and Ironmongery Supplies.

Mold Road, Cefnybedd, Nr. Wrexham

Distributors for all leading Manufacturers.

Tel. Caergwrle 634.



Telephone
2751

Prompt
Delivery
to Your
Home

S. K. WILLIAMS LTD.

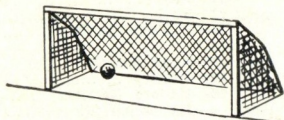
The Wine Merchants

RAINBOW STORES
50 HOPE STREET, WREXHAM

Half-time Scores—

A—Aston Villa v. Liverpool.
B—Everton v. Newcastle.
C—Manchester City v. Chelsea.
D—Nottingham F. v. Man. Utd.
E—Stoke City v. Leeds Utd.
F—Cardiff City v. Derby County

G—Leyton Orient v. Swansea.
H—Workington v. Shrewsbury.
I—Barrow v. Port Vale.
J—Chesterfield v. Notts County.
K—Hartlepool's v. Crewe Alex.
L—Lincoln v. Chester.



Score a Winner

INTEREST

7%

(Subject to Variation)

Tel. :
WREXHAM 2201

Invest NOW in

**Wrexham Rural
District Council**

DETAILS FROM :—

**THE TREASURER (Dept. F)
IMPERIAL BUILDINGS
W R E X H A M .**