

Colchester United 1965-66

Official programme **6d.**

COLCHESTER UNITED FOOTBALL
CLUB TELEPHONE 4042



NOLAN & PERRY

Builders and Plasterers

HIGH ROAD
LAYER-DE-LA-HAYE
Colchester

Tel: Layer-de-la-Haye 218

BOROUGH OF COLCHESTER CIVIL DEFENCE

A member of the community who has done no Civil Defence training will be a liability to his Comrades in an emergency.

Have you done yours ?

BOROUGH CIVIL DEFENCE OFFICER
CIVIL DEFENCE CENTRE
SOUTH STREET, COLCHESTER
Telephone No. 73104

MAKIN MOTOR CYCLES

Specialists in Repairs

Complete Range of MOTOR CYCLES, SCOOTERS, COMBINATIONS,
THREE WHEELERS, ETC.

Machines bought, sold and exchanged

11 NORTH STATION ROAD, COLCHESTER

NEXT HOME GAME

SATURDAY, 9th APRIL, 1966

Kick-off 3 p.m.

FOOTBALL COMBINATION
BIRMINGHAM CITY

TELEPHONE : COLCHESTER 73907/9

YOUNG & SONS

(TRANSPORT) LTD.

HAULAGE CONTRACTORS - Mobile Crane and Mechanical Shovel Available for Hire
49 OLD HEATH ROAD, COLCHESTER, ESSEX

COLCHESTER ESTATE AGENCY

41 NORTH HILL
COLCHESTER

Telephone: Colchester 71334/4751

FOR PROMPT PROPERTY
SALES and SERVICE

For the Freshest Fruit & Vegetables there's
NO MATCH
for



'EVES'
30 BUTT ROAD

Orders delivered
Own grown produce a speciality

THERESA Ladies' Hairdressers

62 LONDON ROAD,
LEXDEN

'Phone: Colchester 5375

For Record Service

MANN'S MUSIC SHOP

123 HIGH STREET

Telephone: Colchester 72783

RECORDS : MUSIC : PIANOS : ORGANS : RECORD
PLAYERS : AMPLIFIERS : MUSICAL INSTRU-
MENTS : PIANO TUNING AND REPAIRING

Colchester United Football Club Ltd.

Directors:

Chairman: W. ALLEN

Vice-Chairman: H. K. MOORE

Dr. FRASER ALLAN, M. H. GOZZETT, L. GUNARY, B. MYERS, G. A. E. NEVILLE, C. C. SCOTT

Manager: NEIL FRANKLIN

Secretary: C. H. ORRIN

Hon. Physician and Surgeon: Dr. FRASER ALLAN

GOOD FRIDAY, 8th APRIL, 1966

Kick-off 3 p.m.

LAYER ROAD GROUND, COLCHESTER

FOURTH DIVISION

Colchester United v. Luton Town

UNITED BULLETIN

TODAY we enter the most vital stage of the season. These Easter games will obviously play an important part in deciding the championship and promotion.

We go into the hard, exacting fray heartened by the fact that we lead the way. In fact, despite dropping the extra point against Wrexham, we increased our advantage, leading by a point instead of just goal average.

Tension seems to be affecting all the clubs at the top with Tranmere and Chester both losing at home.

An talking of spot kick misses—big Ted's third failure in a row is just baffling—what of Darlington who recently missed four in five successive games?

We shall soon be searching the record books to see when Colchester last missed four spot kicks in a season. Phillips' hat-trick of misses was preceded by another by Arthur Kaye.

Although the lads had one of those unaccountable off days against the Welshmen we were still unlucky not to have had both points.

Take Reg Stratton who earlier had scored to give him his sixteenth goal of the campaign. His header which led to the penalty award would have been a certain goal. Indeed many supporters behind the Layer Road goal claimed that it was over the line before the Wrexham pivot handled.

Continued on page five

● If YOU are in difficulty over your Printing Requirements

Consult

ESSEX TELEGRAPH PRESS LTD.

Childwell Works . Magdalen Street . Colchester

Telephone 5611 (2 lines)

WE WILL GIVE YOUR ORDER OUR PERSONAL ATTENTION

Estimates Submitted

FRASER MACKEY LTD.

CONFECTIONERS . TOBACCONISTS
STATIONERS . NEWSAGENTS

Open on Sunday

17 CROUCH ST., THE KIOSK, NEW BUS STATION
and 32 NAYLAND ROAD, MILE END, COLCHESTER

ANGLIAN ELECTRICS

64 BARRACK ST., Colchester
Phone: Colchester 78918

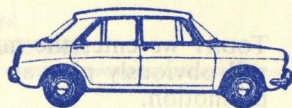
★
For Washing Machine and
Cleaner Repairs
All types of
Electrical Installations
Undertaken
NEW AND RECONDITIONED
WASHING MACHINES, CLEANERS,
REFRIGERATORS, ETC.

Cheap Records Galore

HUNDREDS OF NEW AND USED
L.P.'S. TO BROWSE THROUGH AT

"The Record Exchange"
16b St. John's Street, Colchester

GREAT BROMLEY GARAGE



Car Repairs & Used Car Sales
GREAT BROMLEY, Essex
Tel: Gt. Bentley 262

"ANNE'S"

Ladies' Hair Fashions

176 MAGDALEN STREET, COLCHESTER

Also now at:

7 VINE PARADE, WIVENHOE

Telephone: 610

MODERATE PRICES . PARKING FACILITIES
REDUCED RATES FOR OLD AGE PENSIONERS

PERSONAL ATTENTION ASSURED



COLCHESTER 4916

AUTO SERVICES STATION

REPAIRS . DAGENITE BATTERY Stockists
BATTERY CHARGING
NEW & REMOULD TYRES
SERVICING . CAR WASHING
PRESSURE GREASING
BREAKDOWN SERVICE
NEW & USED SPARES

STANWAY . ESSEX

Tel: COLCHESTER 71698

KICK OFF THE SEASON WITH
A VISIT TO

HULL'S SERVICE STATION

(P. F. C. HULL)

MALDON ROAD . TIPTREE . ESSEX
FORD

SALES



SERVICE

Tel: TIPTREE 358



THE A. J. BRUSH ORGANISATION

Fullbridge Wharf . Maldon . Essex

TELEPHONE: MALDON 981

All Building materials Delivered to your site
in Southern England

Sand & Gravel Producers
Commercial Vehicle Sales
Private Car Sales
Road Haulage Contractors
Barge Owners
Engineers

UNITED BULLETIN—cont.

It was a Saturday with the hard grounds claiming injury victims. Derek Trevis was clearly upset by a first-half knock and Ted of course, had to have a plaster on a cut above the eye.

But what of the gallant Reserves at Brentford? Jackie Bell and David Buck both had to go off and we finished up with nine men in going down 5-0 to a strong Bees side.

Today's could be one of the most exciting matches of the season. Luton, who we are meeting only for the second time in a League match, are close behind in a challenging position. A welcome to their supporters—but make sure you out-shout them. This vocal support does so much for the lads.

It seems certain that we shall have some handy support for the return at Luton on Monday.

It's a hectic time for all concerned—players, manager and officials. After today's encounter we have to embark on the long, long jaunt to Torquay. It makes one sigh for regionalized competition.

It seems that the Reserves might well feel the benefit of shorter journeys with the proposed new London Mid-Week League in which, all being well, we could be competing next season.

Next home games:

Tomorrow (Easter Saturday)—

Reserves v. Birmingham City Reserves (3 p.m.)

Easter Monday—Reserves v. Notts County Reserves (3 p.m.)

Saturday, 16th April—v. Aldershot (League) (3 p.m.)

ROWHEDGE GARAGE

J. RAYNSFORD

Rowhedge High Street

Near Colchester, Essex

Rowhedge 372

Cars Bought and Sold ★ Auto Engineers

Panel Beating Spraying

Break Down Service

A For your Ditch-Digging, Hedge trim-
N ming, Ploughing, Rotovating, Grass-
G cutting, and all Farm cultivations.
contact BOXTED (ex) 357

LANDSCAPES (Geo. E. Pugh)

I BROOKLANDS,
A STRAIGHT ROAD,
BOXTED,
COLCHESTER.

CHARLES H. HYAM

34 EAST STREET,
COLCHESTER

Plumber, Heating Engineer

Telephone: 72008

MARKS "THE TAILOR"

13 ST. JOHN'S STREET
COLCHESTER. Telephone: 4856

- ★ DISTINCTIVE TAILORING
- ★ MODERN OUTFITTING
- ★ AGENTS DENSON FASHION SHOES

TERRACE TOPICS

By TERRACTE

I Do hope the boys aren't going to give us any more shocks like last Saturday! At my time of life it's hard enough to keep going anyway, and the climb up those terraces takes it out of you quite a bit—the strain on the heart and arteries after that is almost too much. When Wrexham equalized, I didn't know whether to drop dead or hang myself from the flagpole! Please, boys, don't upset me like that again—not this season anyway.

Before the kick-off today, we have the presentation of the "Player of the Year" Cup to Brian Hall, by Football Queen, Sue Bryanton, so let's have a nice big welcome for them both. Whilst we are about it, what about a special cheer for Tranmere and Chester who saved our sanity last week-end, by obligingly losing at home! Just so long as we don't do the same for them any time!

I think half the trouble last Saturday was because I deserted my usual place in the terraces and tried another district. Funny how you get used to one spot isn't it? I didn't like the new place one little bit, and I didn't much like you lot I was stood amongst either, if it comes to that. You all just moaned and bellyached without a single bit of humour to relieve it, not like the funny bunch up in my usual place—they should write scripts for some of the T.V. shows—they could do with it! Today I intend to be back in my usual place, screaming my head off as usual.

Continued on Page Seven

"BLACK TILES"

MARTLESHAM, SUFFOLK

'Phone: Kesgrave 76

FULLY LICENSED BAR and RESTAURANT

Breakfast & Coffee .. 9 a.m.—11.45 a.m.	Tea 3.30 p.m.—6 p.m.
Luncheon .. 12 noon—2.30 p.m.	Light Meals .. 9 a.m.—9.45 p.m.

Bar: 10 a.m.—2 p.m.; 5.30 p.m.—10.30 p.m. Weekdays. 5.30 p.m.—11 p.m.
Fridays and Saturdays. 12 noon—2 p.m.; 7 p.m.—10.30 p.m. Sundays.

SPACIOUS CAR PARK

TERRACE TOPICS—cont.

Don't forget the big attraction on Sunday—in aid of the Hospital Broadcast there is a special match between the "Entertainers XI" and an "Old U's XI".

There are lots of big names on both sides, and it should be well worth seeing. Admission by programme 2s. 6d., and we've got some in the Supporters' Club Hut right now. It's on the Garrison Ground, by the way.

I've heard lots of people counting up the "silly" points we have lost at home—one last week, 2 to Bradford City, etc. All that is very true, but don't forget every Club in the League also gives away "silly" points, for instance the Tranmere and Chester slip-ups mentioned above. If none of them ever gave away any points, and everybody gained all the points they should do, there wouldn't be much interest in the game at all, would there? Taking it all round I don't suppose we've thrown away many more than anybody else, it's just that the Colchester public seems to take a great deal more pleasure in moaning and criticising than they do in cheering and supporting. Only a tiny percentage of the population of the Town troubles to support the side to start off with, and then there is quite a large proportion of those who do come, who never open their traps except to barrack or jeer. As my lady correspondent earlier in the season suggested, they are probably hen-pecked husbands who only dare give vent to their feelings at football matches! If that is so, then Layer Road must hold a shocking number of miserable little down-trodden men every week! I suppose, to take a less gloomy view of things, if the Colchester crowds don't go raving mad when we win, at least they don't also go raving mad when we lose, and hurl large chunks of ironmongery on to the pitch. All the same, how wonderful it would be to hear, just once even, a real wholehearted roar of continuous encouragement for the boys. It's worth a goal every time you know—it really is.

Continuing in that vein, I'd be willing to offer odds of 100-6 that the U's get greater support in their away match at Luton on Monday than they will do today. So far as I can hear there is a good crowd going along, all intent on shouting the U's into the Third Division, if you want to go also, nip down and see the Transport Section—they'll do the rest for you!

Give them a big welcome today and do let us have a really good bit of support, after all you've got the week-end to get over it. Happy Easter!

R.A.C.

RICE BOWL CHINESE RESTAURANT

LICENSED

48 ST. JOHN'S STREET, COLCHESTER
Telephone: 73211 — Office 78382



Over 100 Chinese and English different
dishes to choose



Special Luncheon 3-Course at 4/-
Parties Catered for

Open 11.30 a.m. to 11 p.m. (including Sundays)
Saturdays 11.30 p.m.

LAWFORD SERVICE STATION

MANNINGTREE

ESSEX

Tel: MANNINGTREE 2813



FORD RETAIL DEALERS

HIRE PURCHASE

PART EXCHANGE . INSURANCE

**MAKE YOUR GOAL
THE SUN INN**

Next to the church
LEXDEN ROAD, COLCHESTER
Meet your friends there

J. S. MAYNARD

Engineer · Pattern Maker
COLNESIDE WORKS, HIGH STREET
ROWHEDGE :: COLCHESTER

CALL AFTER
THE MATCH

SILVER GRID

FISH AND CHIPS
BARRACK ST. · BOURNE RD.

PARTIES CATERED FOR
St. JOHN'S St.
RESTAURANT

'Phone: 78078

CEDRIC COACHES

A. C. PECK

FOR SERVICE 29, 33, 35 and 41 Seaters
Travel in comfort, direct from Wivenhoe to
Layer Road and Portman Road, Ipswich
Phone: Wivenhoe 268



GROUP TRAVEL PLAN

Clubs, outings, friends, family
groups of 10 OR MORE
can take advantage of bargain price
single, day return or period return
fares (specially attractive bargains for
the under 18's)

For FULL DETAILS, Contact your
Local Station Master or any British
Rail Travel Agent.

For news and views of the "U's"
COLCHESTER

TUES.
3d.

Gazette

TUES.
3d.

10,200 SPECTATORS ARE FORBIDDEN TO CROSS THE PLAYING PITCH

COLCHESTER UNITED(2)

10,200

Substitute: David RAINE

Colours: Blue and White

Right]

Sandy KENNON (1)

[Left

Duncan FORBES (2)

John FOWLER (3)

Bobby BLACKWOOD (4)

Mick LOUGHTON (5)

Derek TREVIS (6)

Peter BULLOCK (8)

Ted PHILLIPS (10)

Mike GRICE (7)

(2) Reg STRATTON (9)

Brian HALL (11)

Referee:

E. D. WALLACE (Swindon)

VIC KEEBLE'S
COLUMN
COLCHESTER
EXPRESS
EVERY THURSDAY

Linesmen:

G. KEEBLE (Stoke Poges)

Yellow Flag

R. J. H. BYATT (Enfield)

Red Flag

WHITTAKER (1)

(i)pen

REID (10)

O'ROURKE (9)

(1) EDWARDS (6)

HARBER

FRENCH (7)

GIBSON (6)

WOODS (5)

MOORE (4)

JARDINE (3)

RIDDICK (2)

Left]

RAMAGE (1)

[Right

LUTON TOWN(2)

Colours: White and Black

Substitute: RIVERS

HARPERS

SPORTS SPECIALISTS
151 HIGH STREET, COLCHESTER
Suppliers to the United and most leading
local Clubs Tel. Colchester 72113

Fully **THE PARK HOTEL** Licensed

Telephone: WIVENHOE 424

TRUMAN'S BEERS

(MR. & MRS. H. MCKEA)

H.P. TERMS **R.E. DAVIS** TEL. 73444
EVERYTHING PHOTOGRAPHIC
SUPERB FRIENDLY SERVICE
36, St. Botolph's Street

YOU KNOW

**THERE ARE
MORE HOPS
IN
BEN TRUMAN**

DON'T BE LEFT BACK
COME STRAIGHT TO THE CENTRE
FOR ALL TRAVEL & HOLIDAYS

★ ★ ★ ★ ★ ★ ★

THE TRAVEL CENTRE
3 CROUCH St., COLCHESTER Tel. 78910

SCOTT'S

OF COLCHESTER

THE JAGUAR SPECIALISTS
IN EAST ANGLIA

Always a Large Selection of
HIGH QUALITY USED CARS

42 Crouch Street, Colchester

Phone 73185

NSU CARS

DISTRIBUTORS
N.E. ESSEX

G. B. R. Motors Ltd.

1 and 2 EAST HILL
COLCHESTER

Tel. 6131/2

SELF-DRIVE

J. D. ROBERTSON AND CO.

64 CROUCH STREET,
COLCHESTER

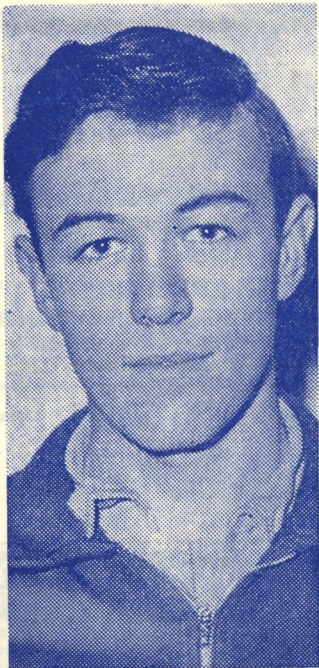
Telephone: 72369

A. K. ARMSTRONG

FOR HIGH CLASS SADDLERY
AND MISCELLANEOUS LEATHER WORK

OUR SPECIALITY

16 Butt Road House, Colchester



**MEET
DAVE
BUCK
and
DAVE
LAITT . . .**



THE two Dave's are lads to watch. They are both 19 and both have figured in Fourth Division games this season as substitutes to create a very favourable impression.

David Buck is the wing-half twin brother of goalkeeper Alan and was signed as a part-time professional at the commencement of the campaign. Last season he was a regular in the Mercia League side with great success. Buck, who works as an engineer at Messrs. Davey, Paxman & Co. Ltd., was educated at Wilson Marriage School, for whom he won a Robert Cook Cup winner's medal alongside brother Alan, Laitt and Peter Hughes. He appeared on many occasions for Colchester and North-East Essex boys and appears to have all the attributes of a good wing-half—good ball distribution and plenty of courage.

David Laitt, a full-back or centre-half like Buck, signed as a part-time professional before the season began. His promising career too follows along the same lines, for he also won a Robert Cook Cup winner's medal with Wilson Marriage. For Colchester and North-East Essex boys he played thirty-three times including four inter-district cup finals. Upon leaving school he played for Wilson Marriage Youth Centre and Colchester Casuals.

Last season Laitt, a printer at Q.B.'s, really came to the fore—captain of the Mercia League side which won the League Cup, many fine games with the "A" Side and some promising Football Combination matches which have further been improved upon since.

SOCCER QUIZ

1. What unusual record belongs to a Luton Town player ?
2. Which three United players have appeared in every League, League Cup and F.A. Cup match to date this season ?
3. On which grounds do the following clubs play—Norwich City, Peterborough United and Reading ?
4. How many current First Division clubs have Colchester United met in Football League, League Cup or F.A. Cup matches ?
5. Who were the last Fourth Division club to lose their unbeaten at home League record this season ?

FOR PERSONAL SERVICE

DOWSETT HERRING & CO.

HOUSE, LAND AND ESTATE AGENTS	GARVIN HOUSE 28 EAST HILL Colchester 6627	MORTGAGE AND INSURANCE SPECIALISTS
----------------------------------	---	--

Our Visitors

OUR nearest Fourth Division opponents this season, Luton are the club whose ups and downs since the war have been most remarkable. From 1955-56 until 1959-60 they were, it's hard to imagine now, First Division members who in 1958-59 were F.A. Cup finalists, losing 2-0 to Nottingham Forest.

Their sad decline indeed really seems to date from that Wembley appearance. In 1959-60 they went down to Division Two.

In 1962-63 they were relegated to the Third and finally last season, alongside Colchester, plunged into the Fourth Division.

Managed now by George Martin, the Hatters are making strenuous efforts to arrest the turning tide and all season have been challenging, always close up behind the top four. They have in John O'Rourke, former Chelsea discard, one of the most prolific scoring centre forwards in the country and much sought after by many big clubs.

Other leading lights are outside left Ray Whittaker, and right winger Graham French, former schoolboy international and youth star who has successfully returned to League football via Wellington, the Southern League club.

Down the years Luton have produced some fine players and most notable was Joe Payne whose ten goals on his debut against Bristol Rovers in 1936 is still a League record.

Luton, who play at Kenilworth Road, where the record gate is 30,069 v. Blackpool in 1959, have won one League championship—that of the old Third Division South in 1936-37, the season of Payne's immortal feat.

COLLIER (STANWAY) LTD. GOLDING AUTOMATICS LTD.

11 LONDON ROAD
STANWAY

Tel: Colchester 78353

Builders' Merchants
Building Materials
Concrete Products
Sand & Gravel

37 LONDON ROAD, MARKS TEY
Tel: 432/3

*We are manufacturers of Automatic
Machines to comply with the amended
Betting and Gaming Act.*

FOR HIRE, RENT, SALE OR SHARES:
**Juke Boxes, Fruit Machines, Pin Tables,
Background Music Systems**

Every Friday
DINNER DANCE
and CABARET
21/- inc.

Phone
BRAINTREE
656



BARN
restaurant

EVERY NIGHT A PARTY NIGHT
Mine Host: BOB PATIENCE
Dance, Wine and Dine to **THE BARN TRIO**
Tuesday to Friday; Licensed 2 a.m.; Menus from 10/6 incl.
Every Saturday

CARNIVAL DINNER DANCE & CABARET

Licensed 2 a.m.; Table D'Hote 35/-; A la Carte from 35/-
Every Sunday **BAND SHOW 8-12**—Menus from 10/6 incl.

**RAYNE ROAD
(A120) BRAINTREE**

Open daily 10 a.m. Available for functions, weddings
or private hire

LUTON TOWN FOOTBALL CLUB

PEN PORTRAITS

- Graham Caleb** (Centre Half). This youngster signed as an apprentice Footballer for us in December 1961, although he has three "A" levels. He settled down very well and showed such promise that he was offered Full Professional Registration in April 1963. He has since appeared in the First Team on a number of occasions.
- Richard Edwards** (Full Back). Was recommended to us by a local scout, and signed Amateur Forms in October 1963. He gained his place in our Combination side immediately, and held it throughout that season. He was offered Professional terms in June 1964, and we look to him now to establish himself as a regular.
- Barry Fry** (Inside Forward). Was signed during the summer on a two-months' trial. Born in Bedford he represented England, both as a Schoolboy and a Youth International. Previous Clubs were Manchester United and Bolton Wanderers.
- Jimmy Gibson** (Wing Half). He was born at Belfast, his first English Club being Newcastle United. Then after a spell with Cambridge United, he transferred to Luton on 2nd February, 1965, when he won and retained a First Team place for the remainder of the season.
- Billy Harber** (Forward). Joined Luton from Swindon, where he played Inside Forward, on a free transfer in September 1964, but made his debut for Luton as a Winger, and towards the end of last season held this position. Although his home is in Stepney, he was born practically on Luton's doorstep, at Hitchin.
- Freddy Jardine** (Full Back). Born in Edinburgh. Played for Dundee for two seasons before coming to Luton at the end of season 1960-61. He came as an outside left, but was successfully converted to a full back, where he figured last season in thirty-two First Team games.
- Howard Kettleborough** (Outside Right). Howard graduated through our Youth Scheme, during which time he played on a number of occasions for Bedfordshire. He signed as a part-time Professional in July, 1965. A native of Sandy who shows great possibilities.

Continued on Page Thirteen



'Phone: COL. 77244

**ELECTRICAL
ENGINEERS**

and **CONTRACTORS**

**COLCHESTER
ELECTRICAL LTD.**

**BOUGHEN
SELF-SERVICE**

15 STATION ROAD, TIPTREE
COLCHESTER
Tiptree 213

- ★ GREEN SHIELD STAMPS ★
★ FREE DELIVERIES ★

W. J. THOROGOOD LTD. 21 HEAD ST., COLCHESTER

LICENSED RESTAURANT

OPEN UNTIL 10 P.M.

Telephone: COL. 73316



Lay and Wheeler Ltd

shippers of fine wines for over a century

Why not ask for our price list?
telephone Colchester 77204

LUFAX MOTOR WORKS

For all Crash Repairs
Cellulosing, etc.

**FAIRFAX ROAD
COLCHESTER**

Telephone 4927



PEN PORTRAITS—cont.

- Tommy McKechnie** (Inside Forward). Born at Glasgow and came here direct from Rob Roy (Scotland) at the end of season 1960-61. Played in the First Team consistently in the past, except when injury prevented him from appearing.
- John Moore** (Wing Half). A newcomer to Luton, having been signed from Motherwell in May 1965. He was recommended to us by our Scottish representative who forecasts a bright future for him in English football.
- John O'Rourke** (Centre Forward). Was previously with the Arsenal and Chelsea, from whom we signed him on a free transfer in December 1965. He immediately made his mark at Luton and scored 22 goals in 23 League appearances for us. He has also played for London Schoolboys and the England Youth Team. Last season he was dogged by injuries.
- David Pleat** (Outside Right). Luton paid a big fee to Nottingham Forest at the beginning of the 1964-65 season, and David has played regularly in the First Team ever since. He played for the England Youth Team alongside O'Rourke and Whittaker. Can be a speedy and direct type of Winger and is popular with the crowd.
- Tony Read** (Goalkeeper). Born at Haydock. His first Club was Sheffield Wednesday, and in 1964 he left them to go to Peterborough United for whom he also played at Centre Forward. He was transferred to Luton in March 1965, but unfortunately, owing to a broken bone in his foot he was unable to play for us last season. With his adaptability on the field, it remains to be seen which will prove to be his better position.
- John Reid** (Inside Forward). Previously played for Bradford and Northampton to whom we made a substantial transfer fee in November 1963. He has settled down well at Luton and is a tireless and energetic worker.
- Gordon Riddick** (Inside Forward). Turned Professional in April 1961 following a short period of Apprenticeship. Tall, with good ball control and a very good shot, much is expected of this lad as he gains more experience. He has already made several First Team appearances.

Continued on Page Fourteen

"ROBINSONS"

118 IPSWICH ROAD, COLCHESTER

Grocers and Provision

COLCHESTER: 4047

LESLIE THORP

for **WOLSELEY and MORRIS**

All makes of New and Guaranteed Used cars
NORTHGATE SHOWROOMS
26-29 NORTH HILL, COLCHESTER
COLCHESTER 77057

Fordham 368

MACNALLY

Builder and Contractor
**WHITE HART LANE,
WEST BERGHOLT, COLCHESTER**

**THIS SPACE RESERVED FOR:
THE SALISBURY HOTEL**

3 BUTT ROAD, COLCHESTER

When going out for a Drink and a Snack

Why not call at the

WHITE HART

WEST BERGHOLT

J. TAYLOR & SONS

FARM AND INDUSTRIAL BUILDINGS

AGRICULTURAL AND GENERAL
ENGINEERS

ABBERTON Peldon 343/4

PEN PORTRAITS—cont.

Alan Rivers (Half Back). Born at Portsmouth, he migrated to this area and was recommended to us in 1961. Progressed through our Junior Teams and signed Full Professional forms in January 1964. Is a very well-built lad who can also play with success at Centre Forward.

Alan Slough (Full Back). Another Luton boy who has graduated through the ranks of Schoolboy, Amateur and Apprentice Professional. He gave very good displays last season, and was offered Full Terms in May 1965, and he is another boy on whom the Club will pin its faith for the future. Can also play with distinction at Wing Half and Inside Forward, in fact he gained County Representative honours as an Amateur in the latter position.

Colin Tinsley (Goalkeeper). Born at Middlesbrough, his first Club being Grimsby Town, then on to Exeter City before joining Luton in August 1963. He made regular appearances in the First Team last season, and established himself as first choice.

Bobby Thomson (Full Back). Born at Menstrie in Scotland. He first came into prominence with Partick Thistle, and was later transferred to Liverpool for a big fee. Luton secured his services from the latter Club on the 2nd August, 1965.

Ray Whittaker (Outside Left). A Londoner from Bow, his only other Club being the Arsenal. He gained England Youth International Honours with John O'Rourke in 1962 and 1963, and when we were in need of a left wing he was persuaded to join us, in March 1964. He went straight into the First Team and held his place for the remainder of the season.

Matt Woods (Centre Half). A native of Skelmersdale, Lancashire. His first Club was Blackburn Rovers for whom he made 126 out of a possible 128 appearances, including a Cup Final, before going to Australia in 1963. Immediately upon his return to this country, Luton secured his services.

TURF ACCOUNTANTS

J. J. BLAND & CO. (Colchester) LTD.

CULVER CHAMBERS
CULVER STREET COLCHESTER

'Phone: COLchester 77741 All Lines

ESTABLISHED 80 YEARS

OFFERING YOU A COMPLETE RACING SERVICE
TO OPEN AN ACCOUNT WRITE OR PHONE



THE COLCHESTER PERMANENT BENEFIT
BUILDING SOCIETY
11 Str Innes Walk, Colchester. Telephone 73125



H. M. HART

PREMIER
WINDOW CLEANING
CONTRACTORS

Our service also includes
OFFICE CLEANING and
BOILER ATTENDANCE

Enquiries: WHITE HOUSE, ELMSTEAD MARKET
NEAR COLCHESTER Tel.: Wivenhoe 419

WHY
ASTE
ASTE
HIGH
WHEELER
ANTS

TELEPHONE:
COLCHESTER 77355/6 and
77190

HEAD OFFICE ALL GRADES OF SCRAP IRON, METALS
CANNON ST. RAGS AND WASTE PAPER PURCHASED
5 Ton Mobile Cranes Available for Hire

Branches
MAGDALEN ST.
& HYTHE QUAY

Once again this season, your programme bears a lucky number, which now entitles you to TWO lots of prizes. One number gives TWO FREE SEATS at Colchester's Super ODEON CINEMA, one of the most comfortable Cinemas in East Anglia.

Sunday, 10th April for 6 days: "THE UGLY DACHSHUND" (U); "WINNIE THE POOH AND THE HONEY TREE" (U) and "THE TENDERFOOT" (U).

The other number now entitles you to a FREE CLEANING VOUCHER, valued 10s. 6d., from SKETCHLEY'S DRY CLEANERS, noted throughout East Anglia for their unrivalled service.

Listen for your programme number on the Public Address System, or look for it on the Board at half-time.

W. GRAY & CO

Tel: Colchester 71510
PAINTING & DECORATING
SUB CONTRACTING
19 PARR DRIVE, COLCHESTER

PRIMARY FOOD FARE

81 Barrack Street
FULL OFF LICENCE—BEER WINES AND SPIRITS
Wine from the wood
APRICOT, CHERRY SHERRY, RUBY
5/- per pint 4/6

MORITA

of San Remo
EXCLUSIVE HAIR STYLIST
and MODELLING
28 EAST STREET, COLCHESTER
TELEPHONE 78844
REVLON MANICURIST IN ATTENDANCE

We are not Experts in this particular field but after the match—

Pay a visit to our Home Ground
The West End Cycle Stores
65 & 71 CROUCH STREET, COLCHESTER
Phone: 73759
Where, in the field of CYCLES—MOPEDS—and
CYCLE ACCESSORIES, also MODEL RAIL-
WAYS and MODEL KITS of every description, we
present an efficient team.
WE too boast of our "faithful supporters"
No turnstiles—Walk in

**MARKET CAFE
GUEST HOUSE**

(Prop. M. J. AKHURST)
Restaurant
Separate Snack Bar . Tea Gardens
2 NORTH STATION ROAD,
COLCHESTER
BED AND BREAKFAST . CAR PARK
6.30 a.m. to 8.30 p.m. (excluding Sunday)



WENTS

Off Licence
and General Provisions
EAST ST., COLCHESTER
Telephone 4146
Good Stocks of Wines and Spirits
Wines from the wood
CAR PARK SPACE

SKODA AGENTS

COLS TEY GARAGE

COPFORD, COLCHESTER

'Phone: Marks Tey 422

★ SALES . SERVICE ★

Colchester's only Fully Licensed
TRAVEL AGENTS
FOR RAIL SEA AND AIR

G. POWELL & Co.

THE TRAVEL AGENT

HIGH STREET
COLCHESTER

Manageress:
MRS. G. CRYER

Tel.:
COL. 77961

P.K. MOTORS and TALLY HO CAR SALES LTD.

Essex Distributors for; SKODA, WART-
BURG & DAF . Agents for AUSTIN,
VOLVO & SAAB . Used Car Specialists

DIESEL AND PLANT REPAIRS AND HIRE

MAIN ROAD, FRATING, Nr. Colchester

Tel: Gt. Bentley 464

D. M. THOMPSON

HAIR STYLIST

5A BUTT ROAD

Tel: Colchester 72179

Before or after the match...

VISIT

"Bon Appetit"

FOR A QUALITY MEAL

1 GEORGE STREET

COLCHESTER

DAWSON SON & CO. (INSURANCE) LTD.

HEADGATE HOUSE, COLCHESTER

Telephone: 78575/7

SPECIAL SCHEMES FOR MOTORISTS

Competitive Terms and Personal Service for all Types of Insurance

Curtis, Bell & Smith Ltd.

HIGH STREET, ★ COLCHESTER

HYTHE HILL, ★ COLCHESTER

CONNAUGHT AVE., ★ FRINTON-ON-SEA

PIER AVE., ★ CLACTON-ON-SEA

Telephone: Colchester: 78758



W. ALLEN & SON

Butchers

Wholesale and Retail

Tel: 73443 & 71579

SPECIALISTS IN HOME-KILLED
MEAT

ST. BOTOLPH'S STREET, COLCHESTER